

landscape design report

Mosman High School
745 Military Road LOT: 1 DP: 1268793
Mosman NSW
March 2021
SSDA ISSUE_ Revision 07
prepared by Black Beetle

LANDSCAPE PRINCIPLES AND DESIGN INTENT

In general the Landscape Design sets out to:

1. Provide a functional and stimulating environment that is responsive to the site and architecture of the school campus.
2. Maximise tree canopy across the site by maintaining existing trees where possible and introduction of additional canopy where practical and appropriate. The Draft Greener Places Design guide sets indicative target of greater than 25 per cent tree canopy cover in urban residential (medium- to high-density) and light commercial areas & greater than 40% in suburban areas. Given the urban nature of the site, proposed building footprint and already highly programmed open spaces there is limited opportunity to increase tree canopy, which currently sits at 24.6%
3. Select plant species that are suited to the various microclimatic conditions and desired requirements/characteristics of the site. The plant selection, while a mix of native and exotic species, focuses on the use of Endemic, Native and Low Water Use plant species where appropriate. All species have been cross-checked with relevant Weed and Noxious Species Lists and are suitable for use in a school setting (i.e. non-toxic, low allergenic).
3. Develop and provide a functional and usable setting for the proposed school building. Programmed areas / zones are designed to activate and encourage use of the buildings immediate surrounds and provide students with an extension of the internal informal learning and study spaces. The careful selection of materials and palette of plants ties the new building into the existing school campus.
4. The landscape aims to respond to the key objectives of the overall masterplan approach, reflecting the school grounds and local character while giving consideration to the existing and proposed facilities, needs of students and staff and visual aesthetic.
5. Optimise the education, social and wellbeing of all users Observe Crime Prevention Through Environmental Design (CPTED) Principles

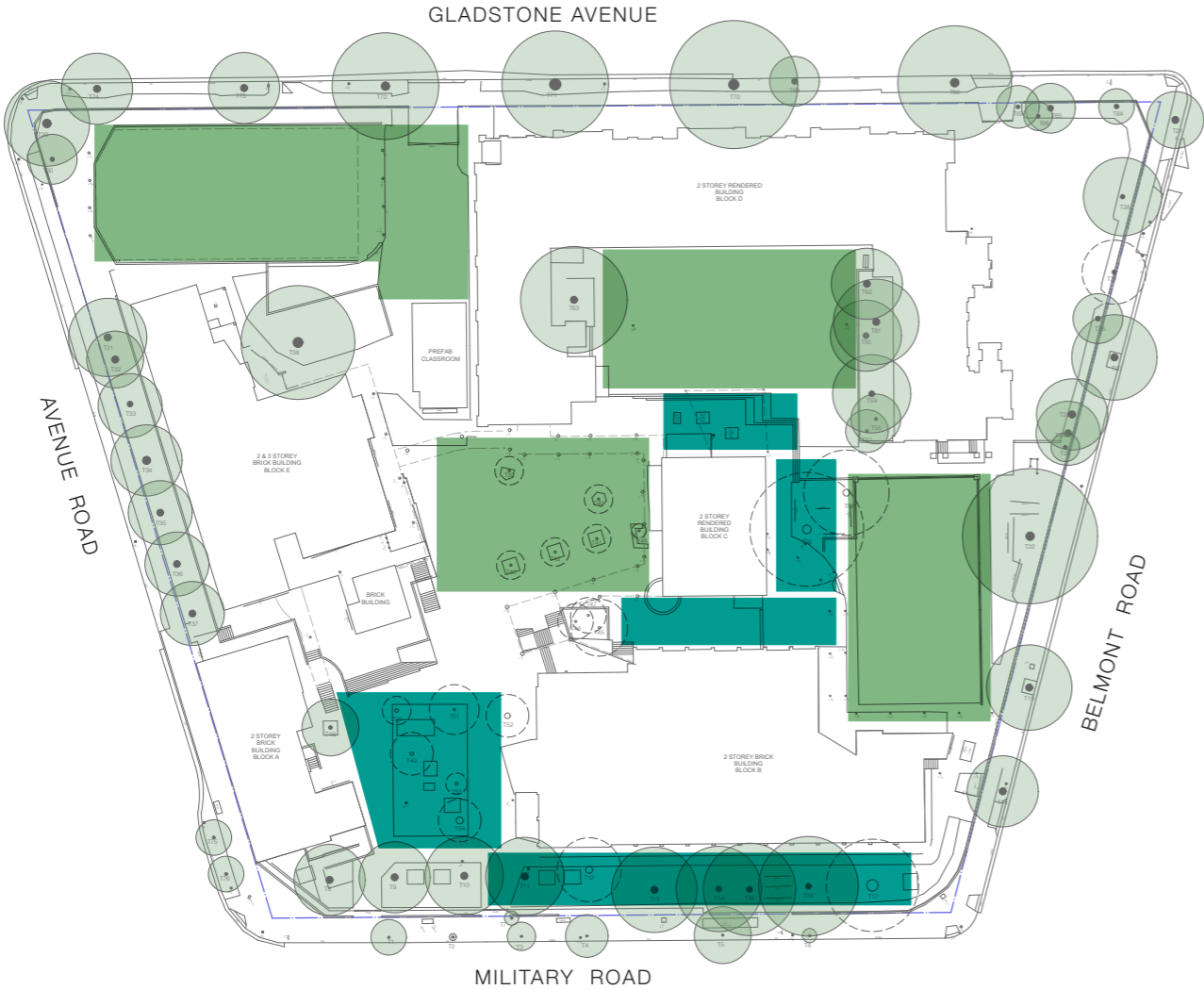
The primary Landscape Components of this project can be divided as follows:

- Military Road Landscape
- Arts Courtyard
- Hall Forecourt
- Central Lawn
- Lower Terrace
- Curtilage Works
- Level 3 Library Terrace
- Level 4 Rooftop

CONCLUSION

The landscape design ensures the proposed development sits comfortably within the site and surrounding area. The landscape is simple in its structure and materials yet functional and responsive to the school campus setting. It responds well to the sites varying spaces and challenges.

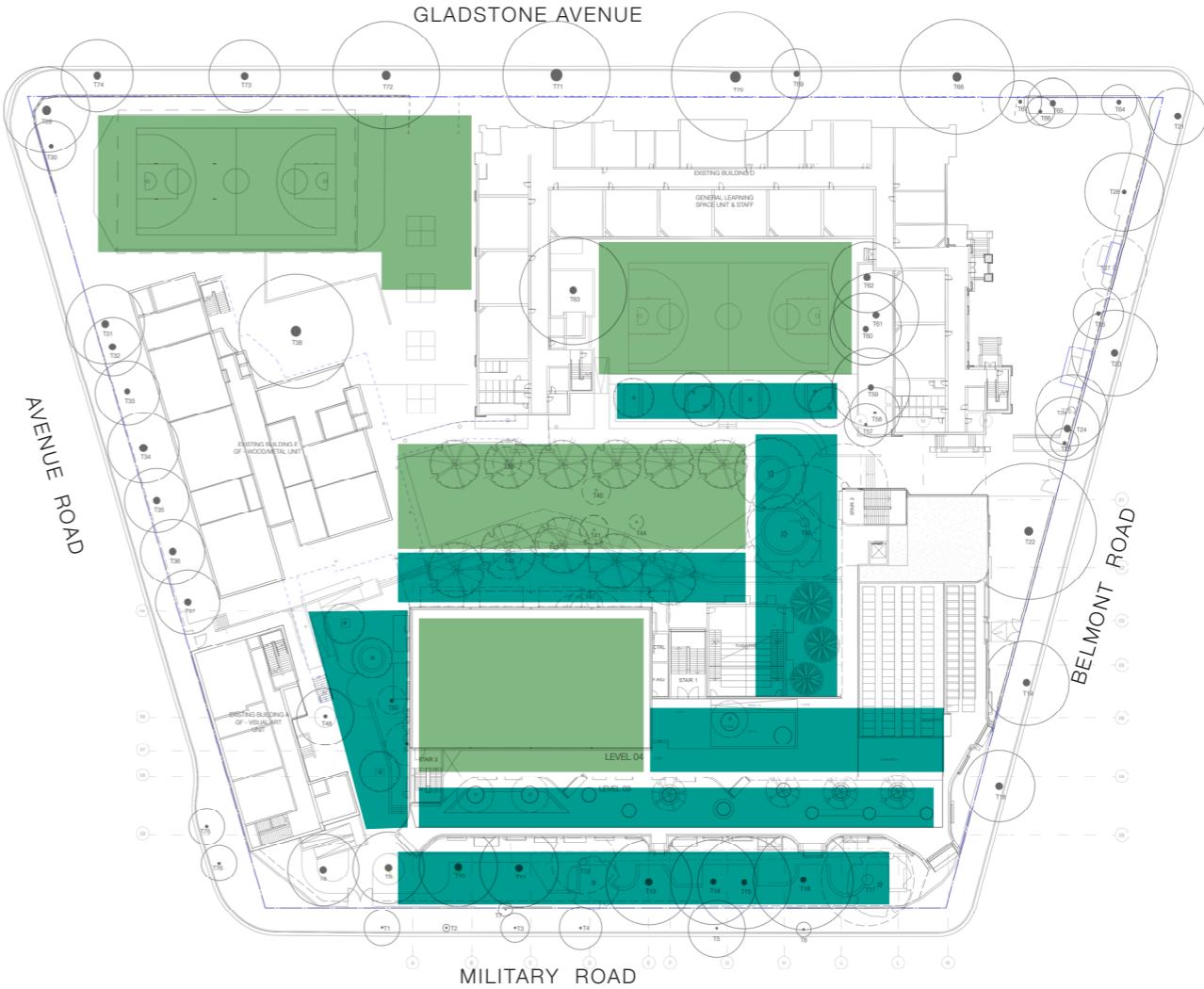




EXISTING ACTIVE AND PASSIVE SPACE

PASSIVE SPACE

ACTIVE SPACE



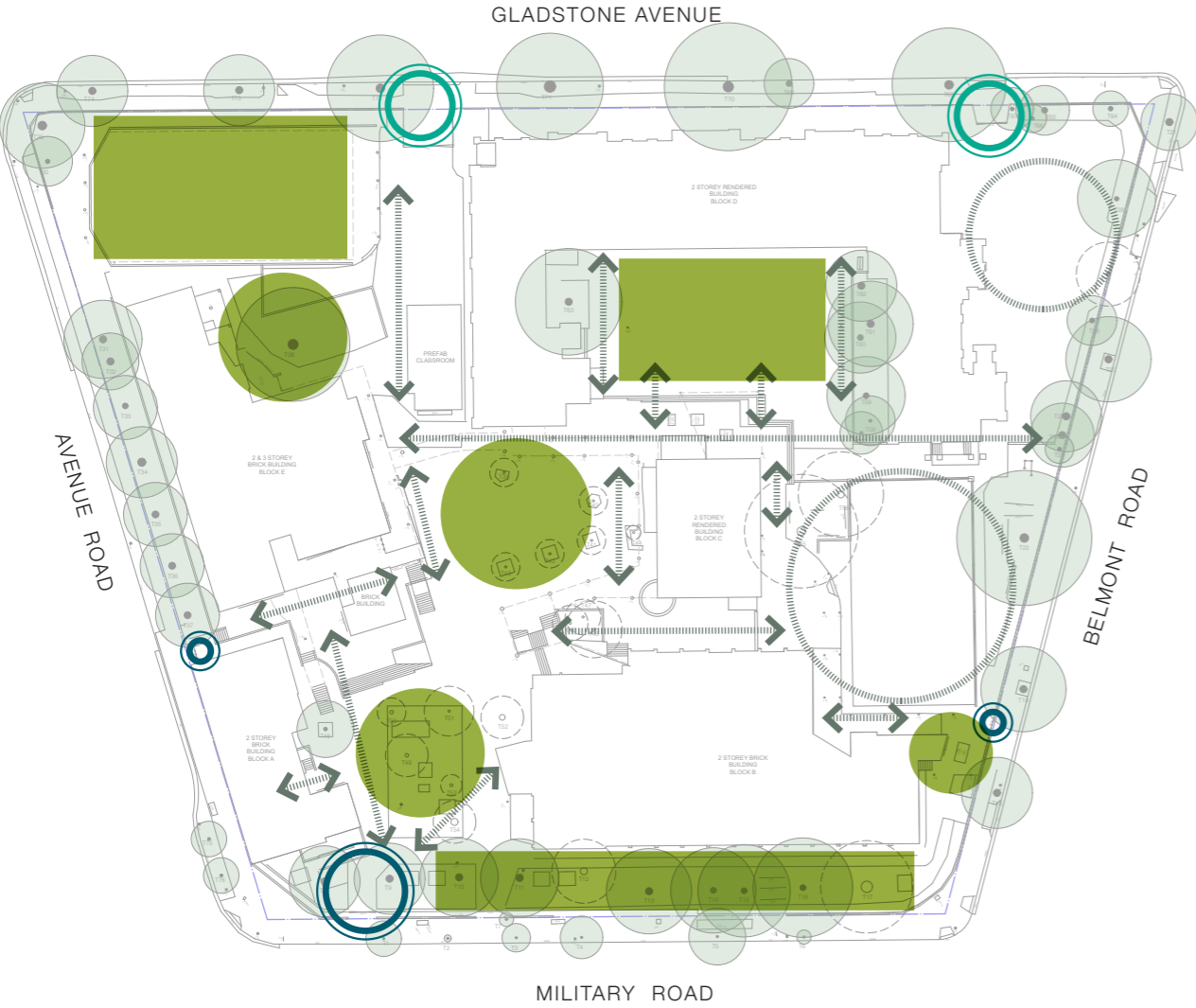
PROPOSED ACTIVE AND PASSIVE

PASSIVE SPACE

ACTIVE SPACE

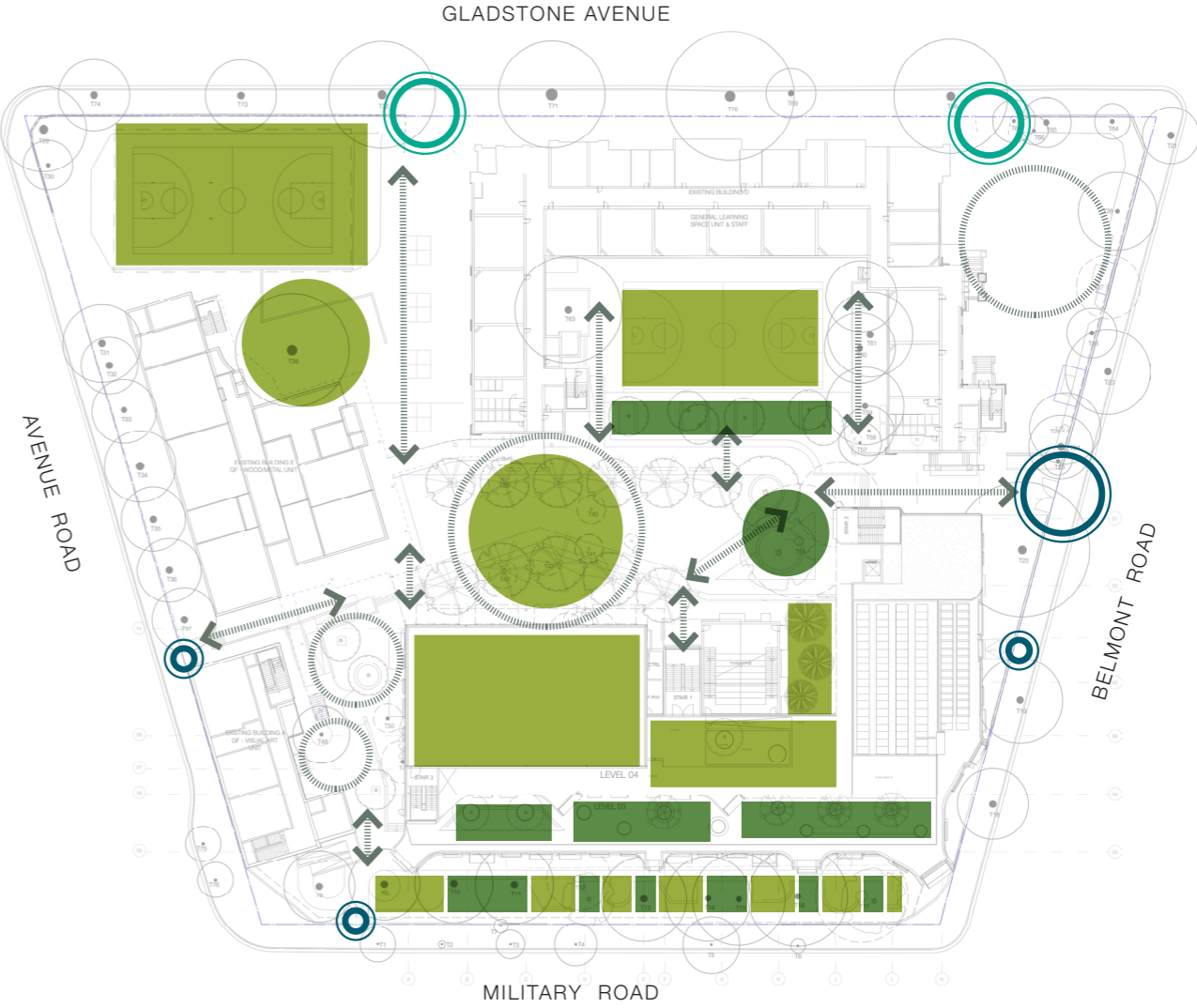


1.2 site context analysis - connections and circulation



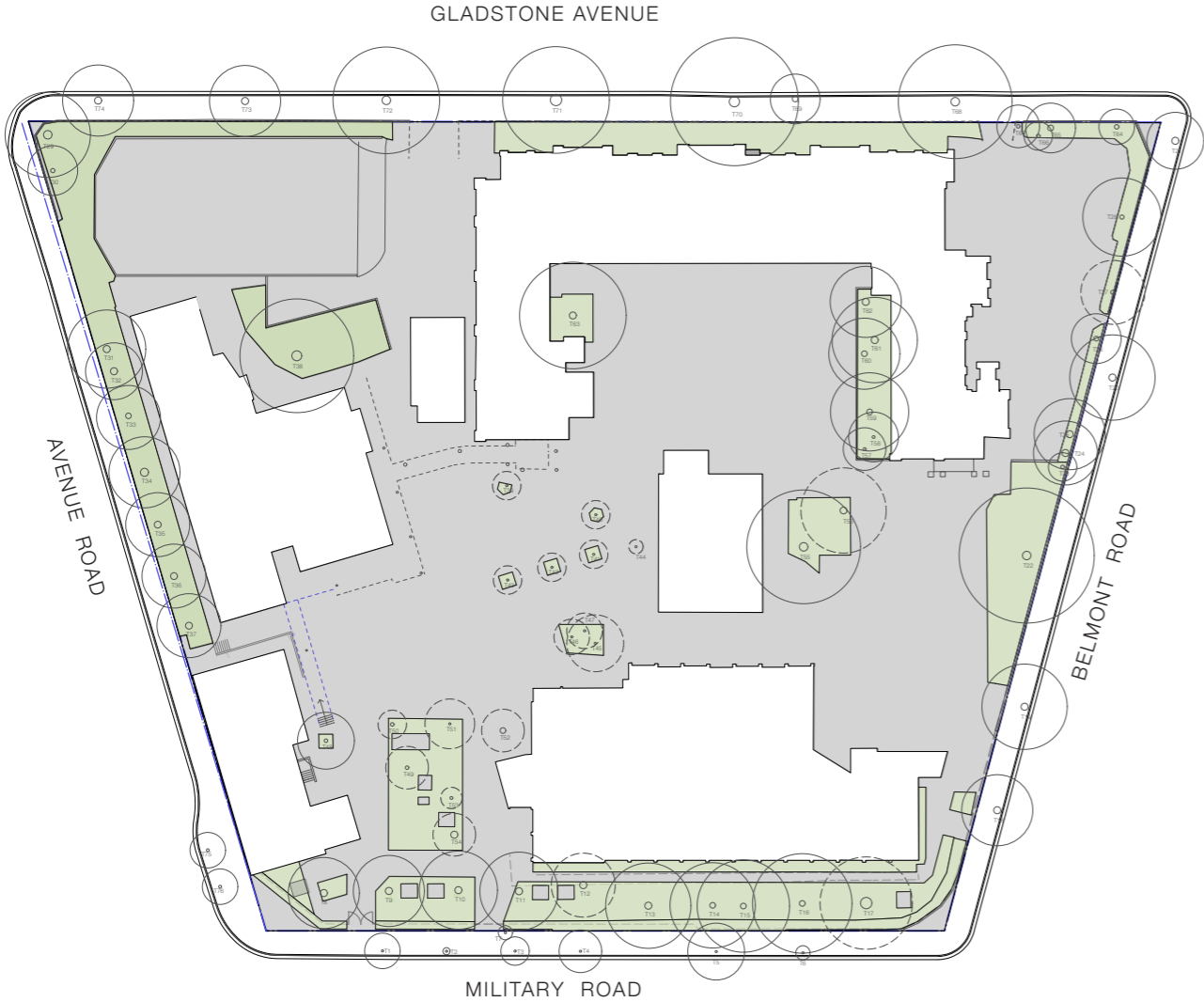
EXISTING CONNECTIONS AND CIRCULATION

- SCHOOL ENTRY
- VEHICLE ENTRY
- CIRCULATION PATH
- GATHERING SPACE
- LEARNING GARDEN



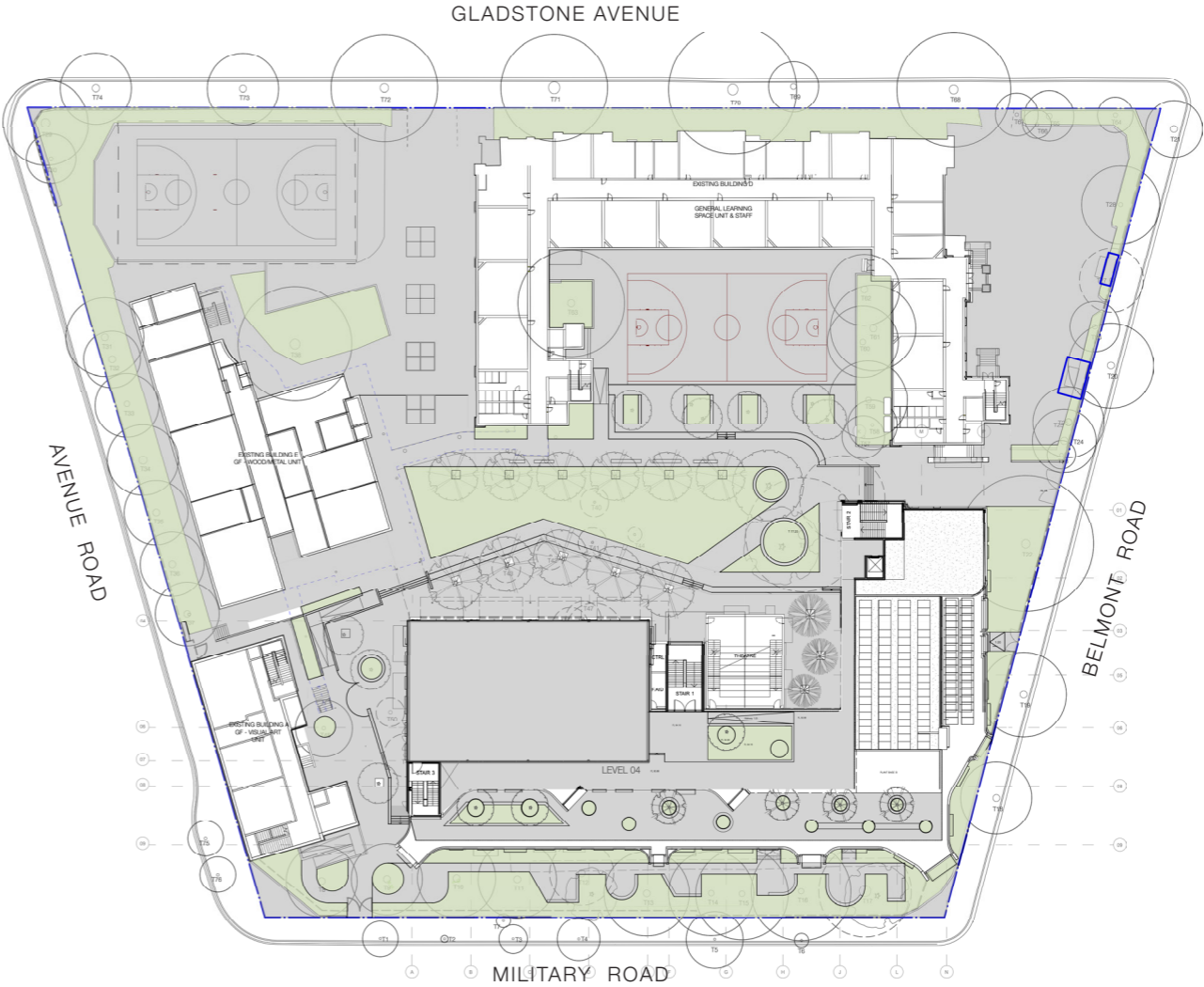
PROPSOED CONNECTIONS AND CIRCULATION

- SCHOOL ENTRY
- VEHICLE ENTRY
- CIRCULATION PATH
- GATHERING SPACE
- LEARNING GARDEN



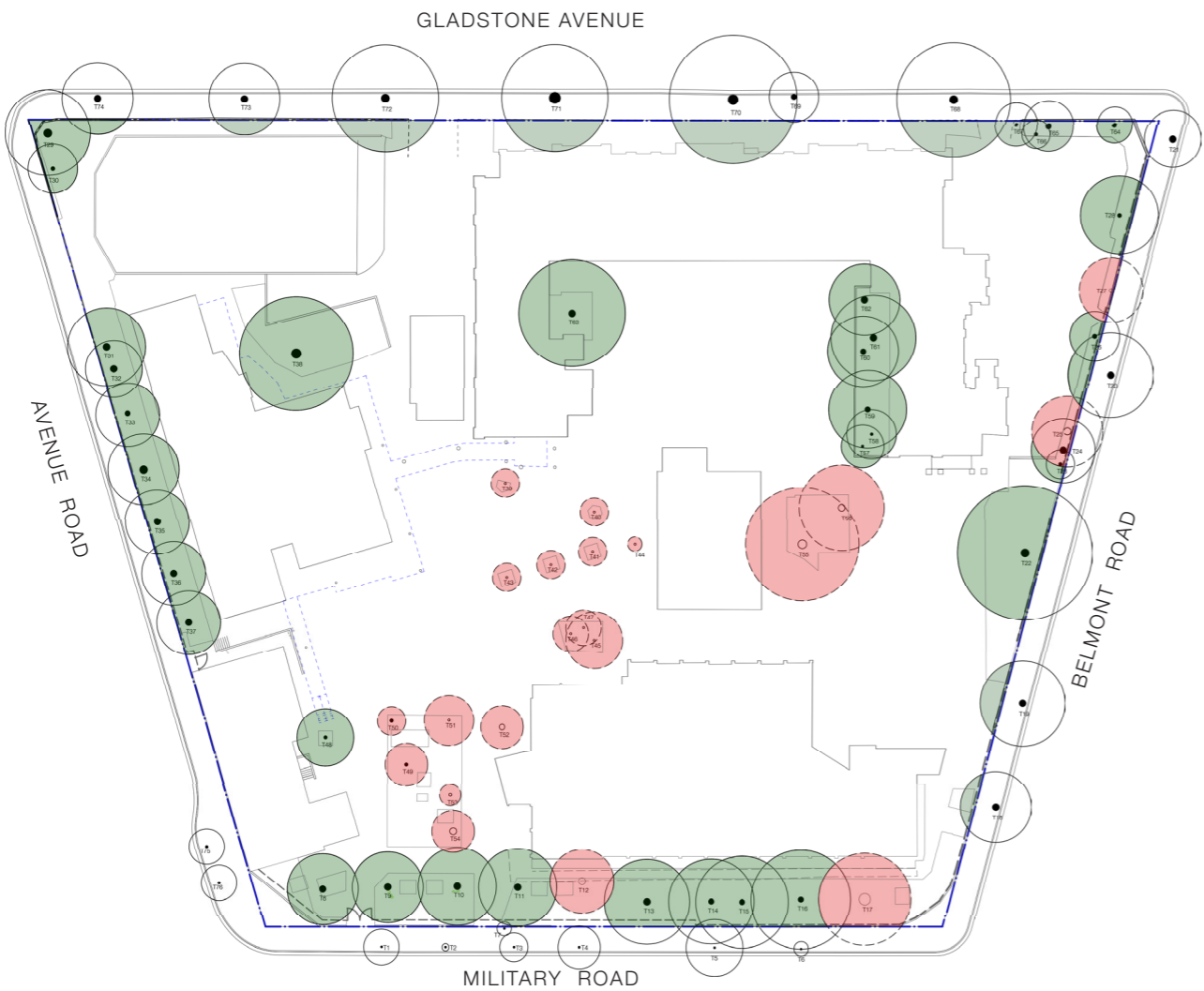
EXISTING SITE COVERAGE

- BUILDING FOOTPRINT
- HARDSCAPE
- SOFTSCAPE



PROPOSED SITE COVERAGE

- BUILDING FOOTPRINT
- HARDSCAPE
- SOFTSCAPE



EXISTING TREE CANOPY

- TREES TO BE RETAINED
 - TREES TO BE REMOVED (Total No. 21)
- (SUBJECT TO ARBORIST ADVICE AND APPROVALS)

TREE QUANTITY CALCULATIONS

QTY EXISTING TREES	76
QTY TREES TO BE REMOVED	20
QTY TREES REMOVED UNDER REF WORKS	1
QTY PROPOSED NEW TREES	34
TOTAL QTY PROPOSED TREES	89



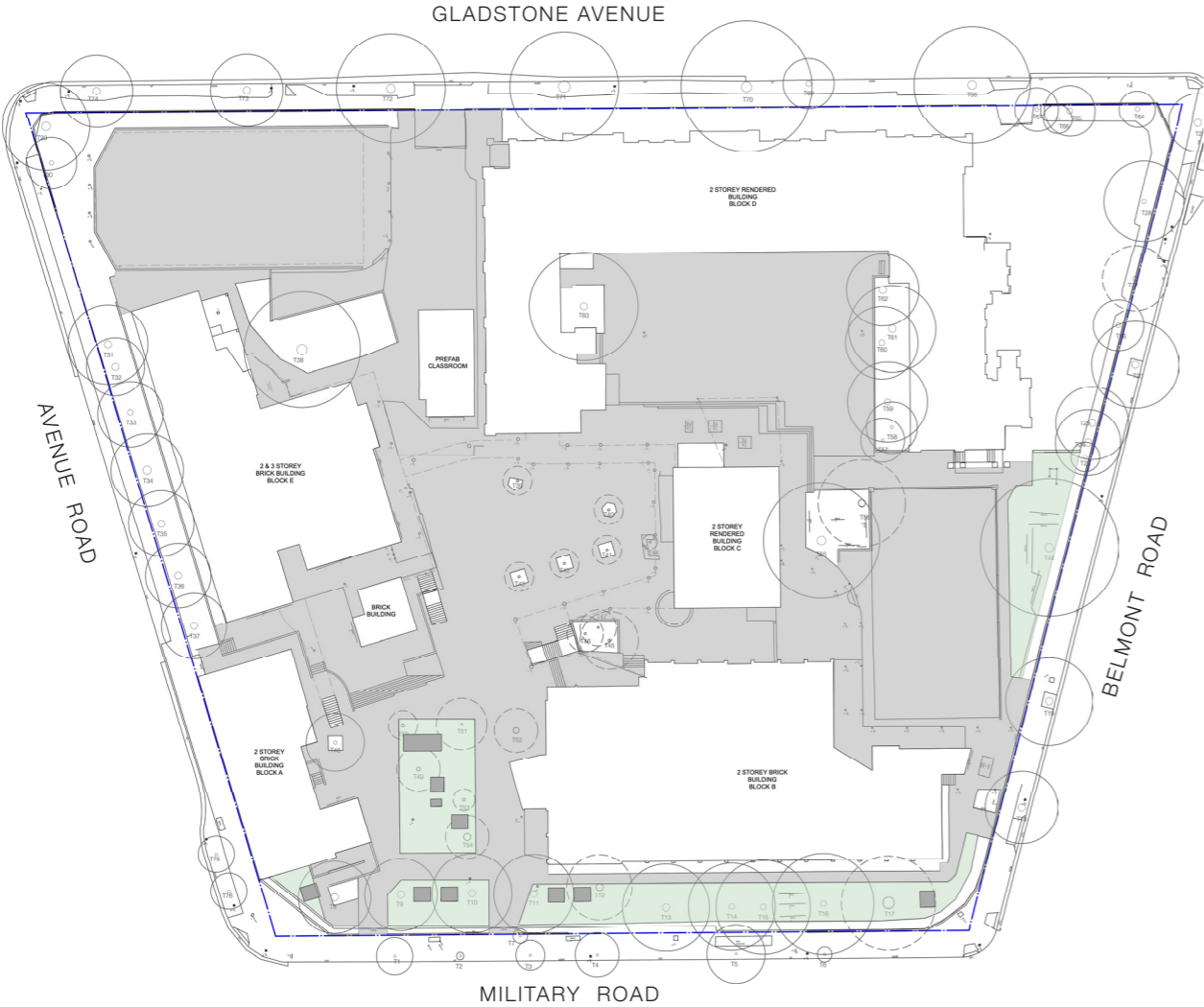
PROPOSED TREE CANOPY

- EXISTING TREES TO BE RETAINED
- PROPOSED TREES (Total No. 34)

TREE CANOPY CALCULATIONS

SITE AREA: 14481sq.m

EXISTING TREE CANOPY COVER	3083 sq.m	21.2%
TREE CANOPY TO BE REMOVED	730 sq.m	5.0%
PROPOSED NEW TREE CANOPY COVER	1211 sq.m	8.4%
TOTAL PROPOSED CANOPY COVER	3564 sq.m	24.6%



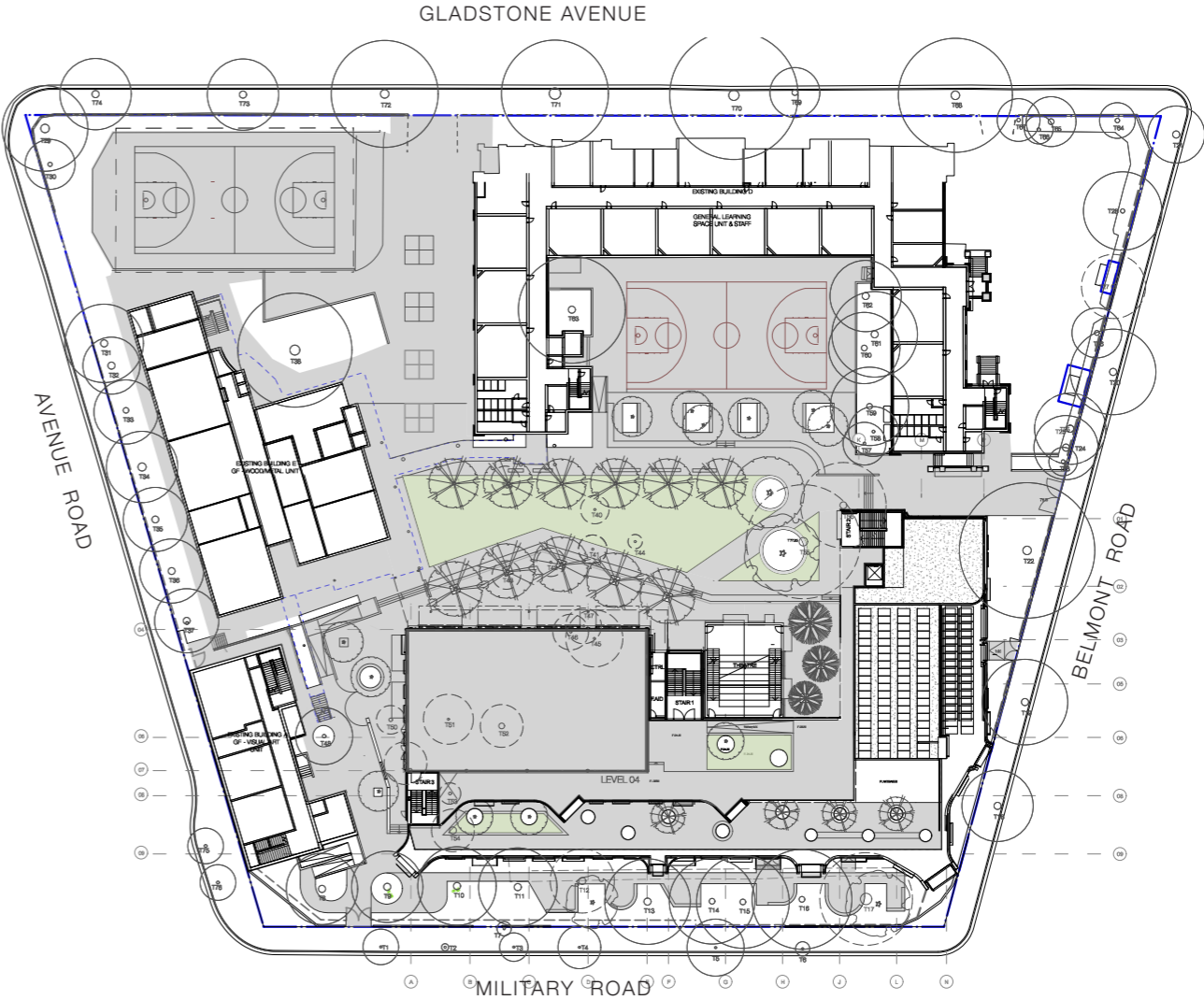
EXISTING OPEN SPACE CALCULATIONS

SITE AREA: 14481sq.m

EXISTING OPEN SPACE: 7055 sq. m (48.7%)

EFSG GUIDELINES REQUIREMENT: 10 SQ.M / STUDENT OF PLAYSPACE (ie 11000 sq.m)

BASED ON 1100 STUDENT ENROLMENT = 6.4 sq.m / STUDENT OF PLAYSPACE
(current enrollment Qty 1116 students)



PROPOSED OPEN SPACE CALCULATIONS

SITE AREA: 14481sq.m

PROPOSED OPEN SPACE: 8688 sq. m (60.0%)

BASED ON 1200 STUDENT ENROLMENT = 7.24 sq.m / STUDENT OF PLAYSPACE



SURVEILLANCE AREA C (YELLOW HATCH)

- 3. COLA AND PAVEMENT AREAS MAINTAIN CLEAR SIGHT LINES TO PLAYGROUND AREAS.
- 4. SCREEN PLANTING ALONG BOUNDARY MAINTAINS PRIVACY FROM STREET

SURVEILLANCE AREA A (BLUE HATCH)

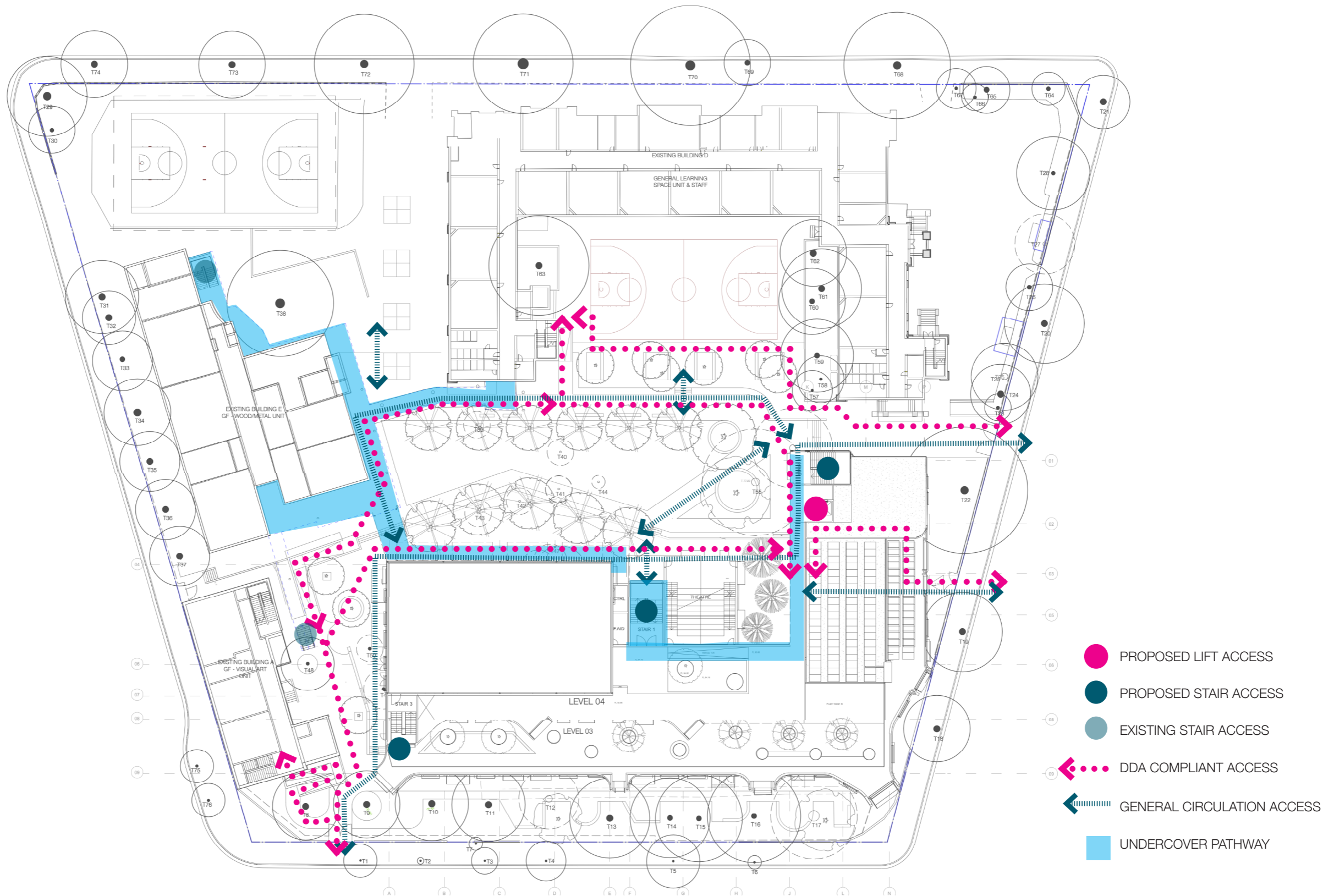
- 1. LOW UNDERSTOREY PLANTING AND A RAISED CANOPY MAINTAIN CLEAR SITE LINES FOR SURVEILLANCE ALONG MILITARY ROAD FRONTAGE
- 4. SCREEN PLANTING ALONG BOUNDARY MAINTAINS PRIVACY FROM STREET

SURVEILLANCE AREA D (RED HATCH)

- 5. OUT OF BOUNDS AREAS

SURVEILLANCE AREA B (PINK HATCH)

- 2. OPEN TERRACES WITH TREE PLANTING WITH RAISED CANOPIES MAINTAIN CLEAR VIEWS THROUGH SCHOOL CENTRE.





vision statement

To create an integrated immersive environment providing a variety of flexible spaces for learning and socialising

3.1 design rationale



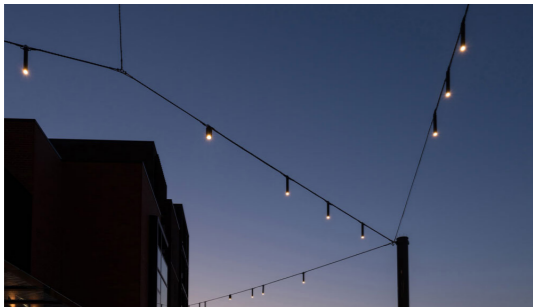
ENTRY AND CANTEEN FORECOURT

A new generous entry is proposed with an entry path from Belmont Street opening onto the central courtyard. Walkways lead from the entry onto the three terrace levels of the school. Leading to the left the canteen forecourt combines a circular bench seat and palms in pavement to maximise shade and privacy from above while maximising usable space at ground level.



SCHOOL CENTRE

Open lawn areas are provided to the central courtyard of the school offering open space for active play, games and gathering. The open lawn areas are complimented with shade trees creating generous shady areas that provide respite from the sun and a quieter place to gather.



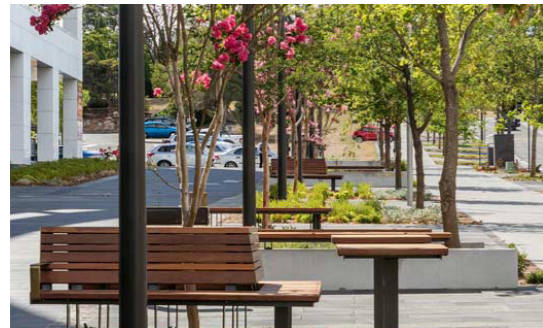
ARTS PLAZA

The Arts Plaza is nestled between A Block and the New School Hall. The proposal for this area is to create a spill out area for the hall as well as an accessible pathway from Military Road through to the hall and lower terraces beyond. The focus of the Arts Plaza, while a transition space is also designed to create a intimate courtyard space where small events and exhibitions could be held, as well as a space for students to collaborate and gather.



LIBRARY TERRACE LEARNING GARDEN

The library terrace is envisaged as a learning garden. It is designed to provide a number of different areas where students can study by themselves or in small groups. Larger groups and classes can gather and spill out from the adjacent outdoor Learning Areas. In this area the proposal also includes a with Native Orchard as a garden classroom where the students can participate in the life cycle of a garden - planting, watering, weeding harvesting, pruning and composting. It is also a place where exploration and imaginative play are encouraged.



MILITARY ROAD FRONTAGE

The Military Road frontage on the School is a highly used seating area for students. This proposal revitalises this space providing seating nodes under the existing canopy creating a flexible learning and recreation space that can be used as an extension of the classroom or a quiet place to gather under the shade of the existing trees.



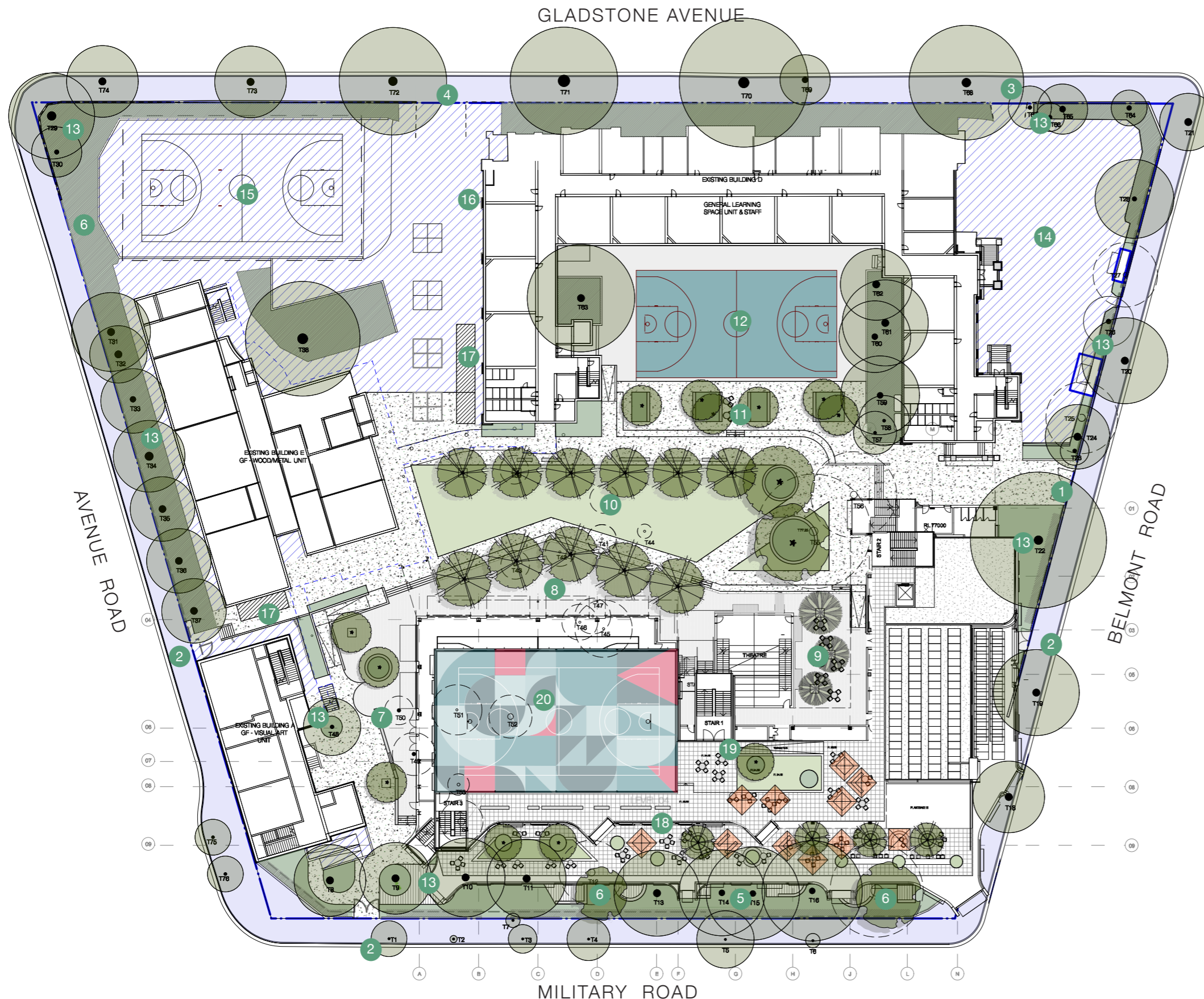
ROOF TERRACE

The multi court provides an area for more formalised sporting games with multiple line markings to incorporate basketball, netball, soccer and handball. The proposal is for the multi court to be surfaced in painted concrete. Adjacent to this active space a series of quieter areas where students can mingle relax and study are located around a central planted garden and raised lawn.

3.2 design rationale



4.1 masterplan



LANDSCAPE KEY

1. MAIN ENTRY
2. SECONDARY ENTRY
3. VEHICLE ENTRY
4. SERVICE VEHICLE ENTRY
5. MILITARY ROAD LANDSCAPE - TREES TO BE RETAINED WITH NEW PATH, SEATING PODS AND SUPPLEMENTARY NATIVE GRASS PLANTING.
6. REPLACEMENT NATIVE TREE PLANTING
7. ARTS PLAZA - NEW PAVEMENT, STAIRS AND DDA ACCESS. SUPPLEMENTAL NATIVE TREE PLANTING, SEATING AND OVERHEAD CATENARY LIGHTING
8. NEW HALL FORECOURT. DECIDUOUS TREE PLANTING & BLEACHERS DOWN TO CENTRAL LAWN
9. CANTEEN FORECOURT WITH DINING AREA AND PALMS IN PAVEMENT
10. CENTRAL LAWN TERRACE WITH NEW TREE PLANTING.
11. LOWER TERRACE - BLEACHERS FROM CENTRAL LAWN TERRACE TO SEATING AREA WITH NEW NATIVE TREE PLANTING
12. EXISTING BASKETBALL COURT TO BE RETAINED AND RESURFACED
13. EXISTING CANOPY TREES TO BE RETAINED
14. EXISTING CARPARK TO BE RETAINED
15. EXISTING COLA AND BASKETBALL COURT TO BE RETAINED
16. BIN STORE
17. BIKE PARKING
18. LEVEL 3 TERRACE LANDSCAPE
19. LEVEL 4 ROOFTOP TERRACE AND LAWN
20. LEVEL 4 ROOFTOP MULTICOURT

SCALE
1 : 600 @ A3



5.1 detail plan

LANDSCAPE KEY

1. EXISTING BOUNDARY FENCE TO BE RETAINED

2. NEW GARDEN (SHRUBS, GRASSES AND GROUND COVERS - 7/sq.m) OPTION TO REVIEW FENCE LINE AT BELMONT RD CORNER

3. EXISTING NATIVE TREE PLANTING TO BE RETAINED

4. REPLACEMENT NATIVE TREE PLANTING (TREES -400L)

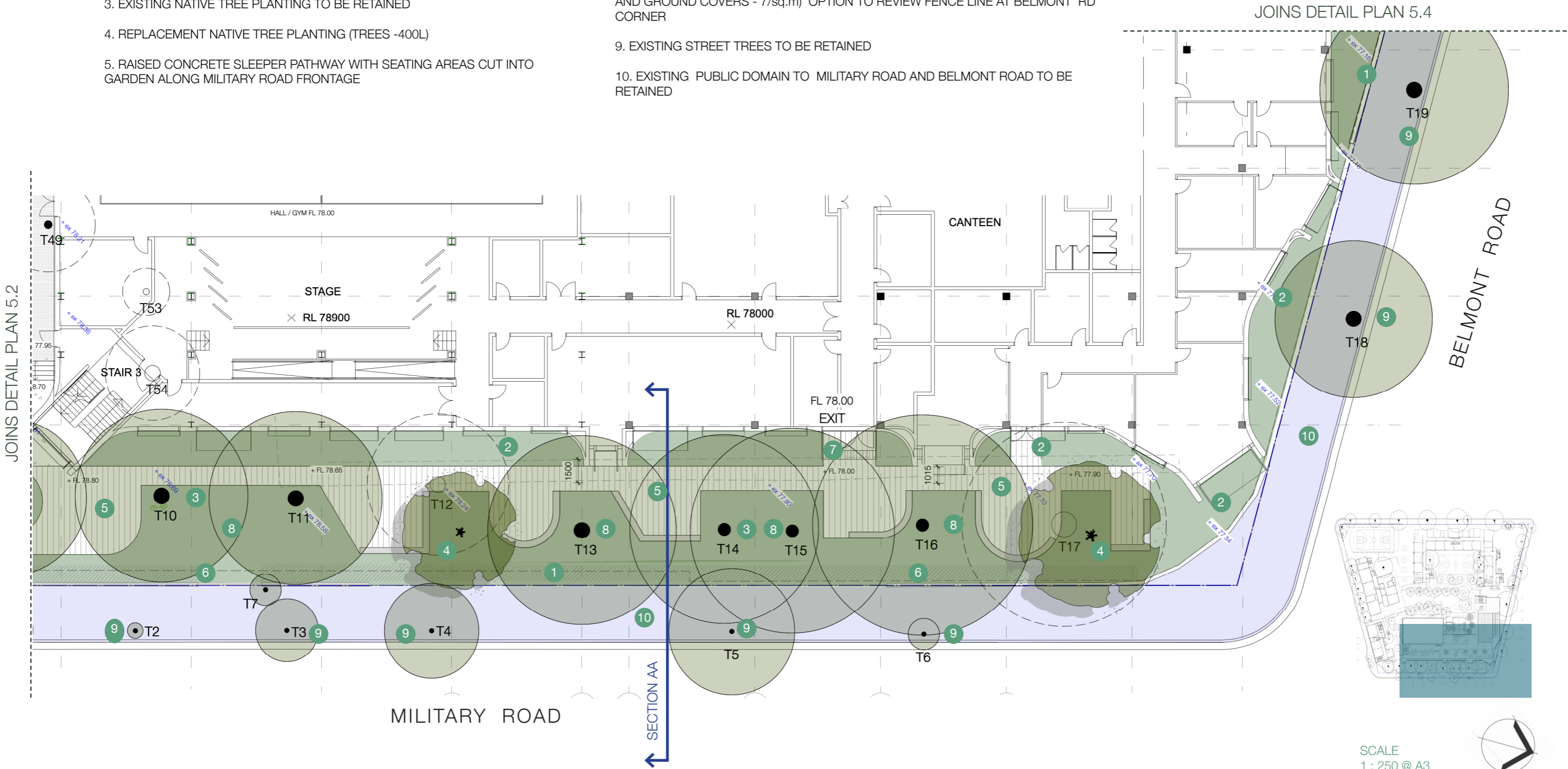
5. RAISED CONCRETE SLEEPER PATHWAY WITH SEATING AREAS CUT INTO GARDEN ALONG MILITARY ROAD FRONTAGE
6. EXISTING SCREEN PLANTING ALONG BOUNDARY TO BE RETAINED

7. FIRE EXIT ACCESS

8. NEW SUPPLEMENTAL PLANTING UNDER EXISTING TREES (SHRUBS, GRASSES AND GROUND COVERS - 7/sq.m) OPTION TO REVIEW FENCE LINE AT BELMONT RD CORNER

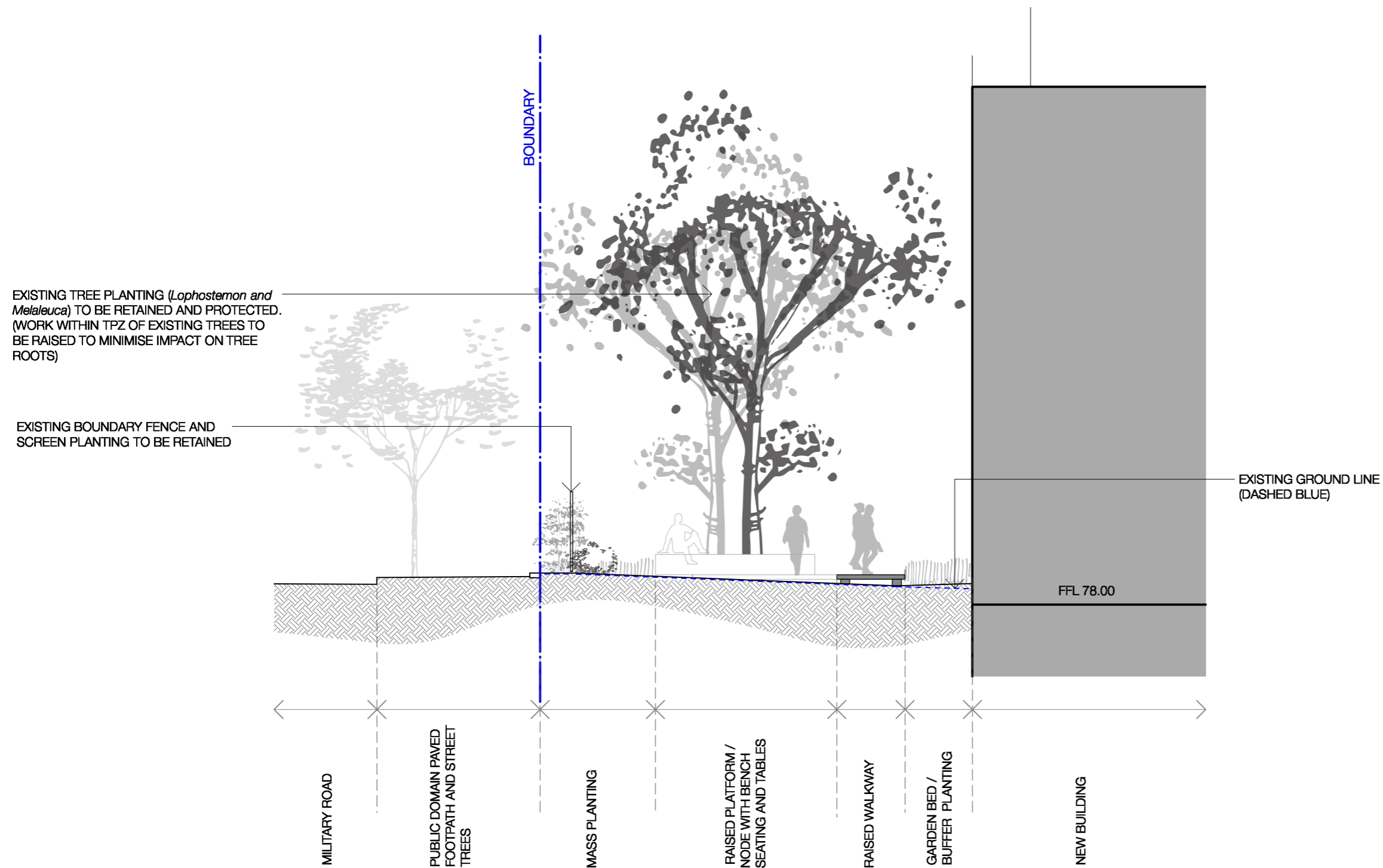
9. EXISTING STREET TREES TO BE RETAINED

10. EXISTING PUBLIC DOMAIN TO MILITARY ROAD AND BELMONT ROAD TO BE RETAINED

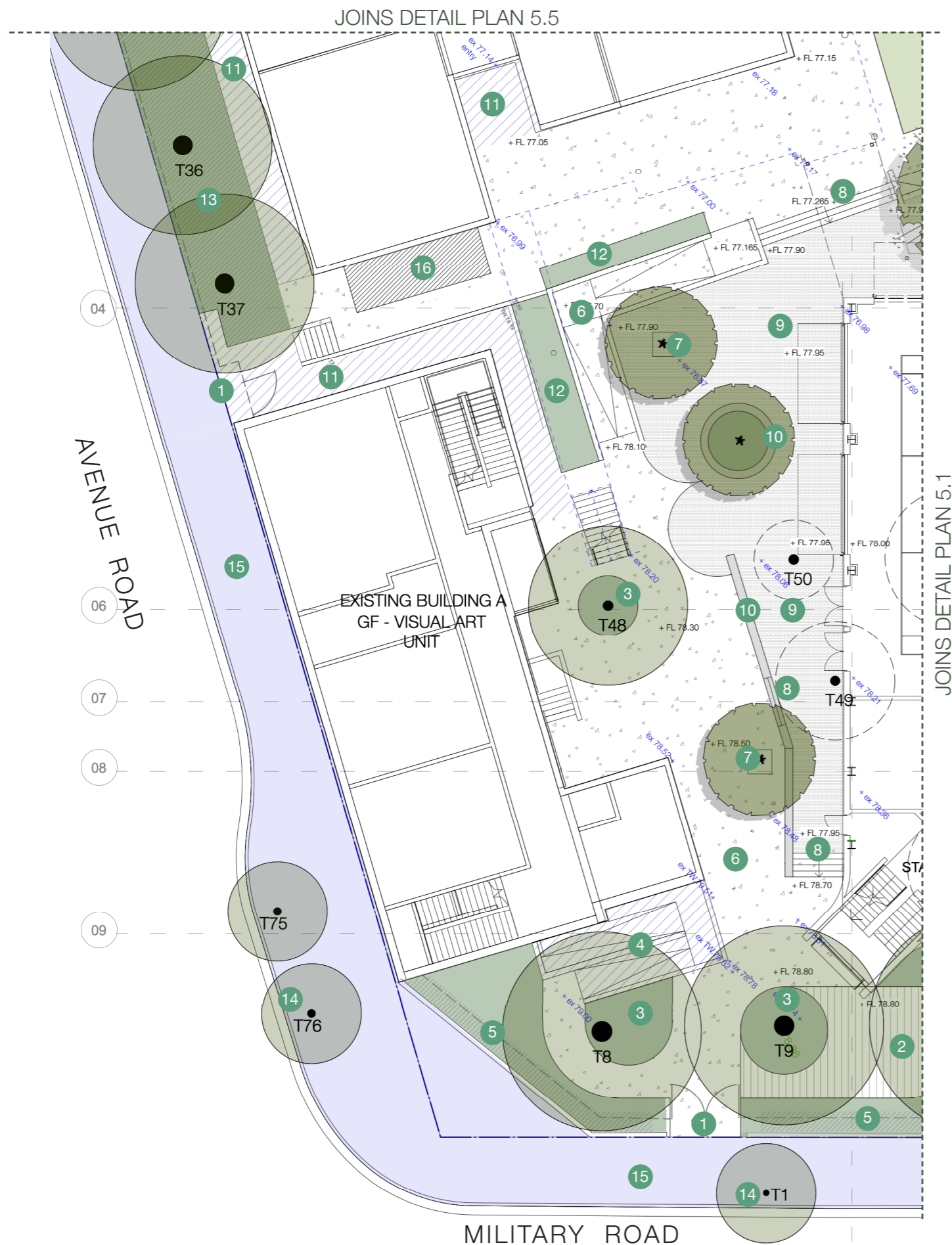


5.1

detail section aa

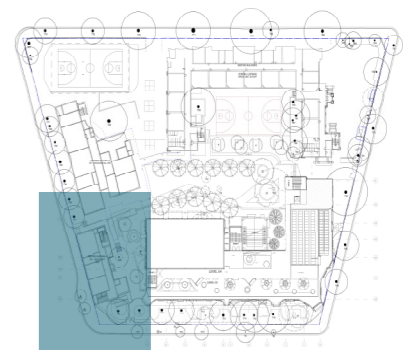


5.2 detail plan



LANDSCAPE KEY

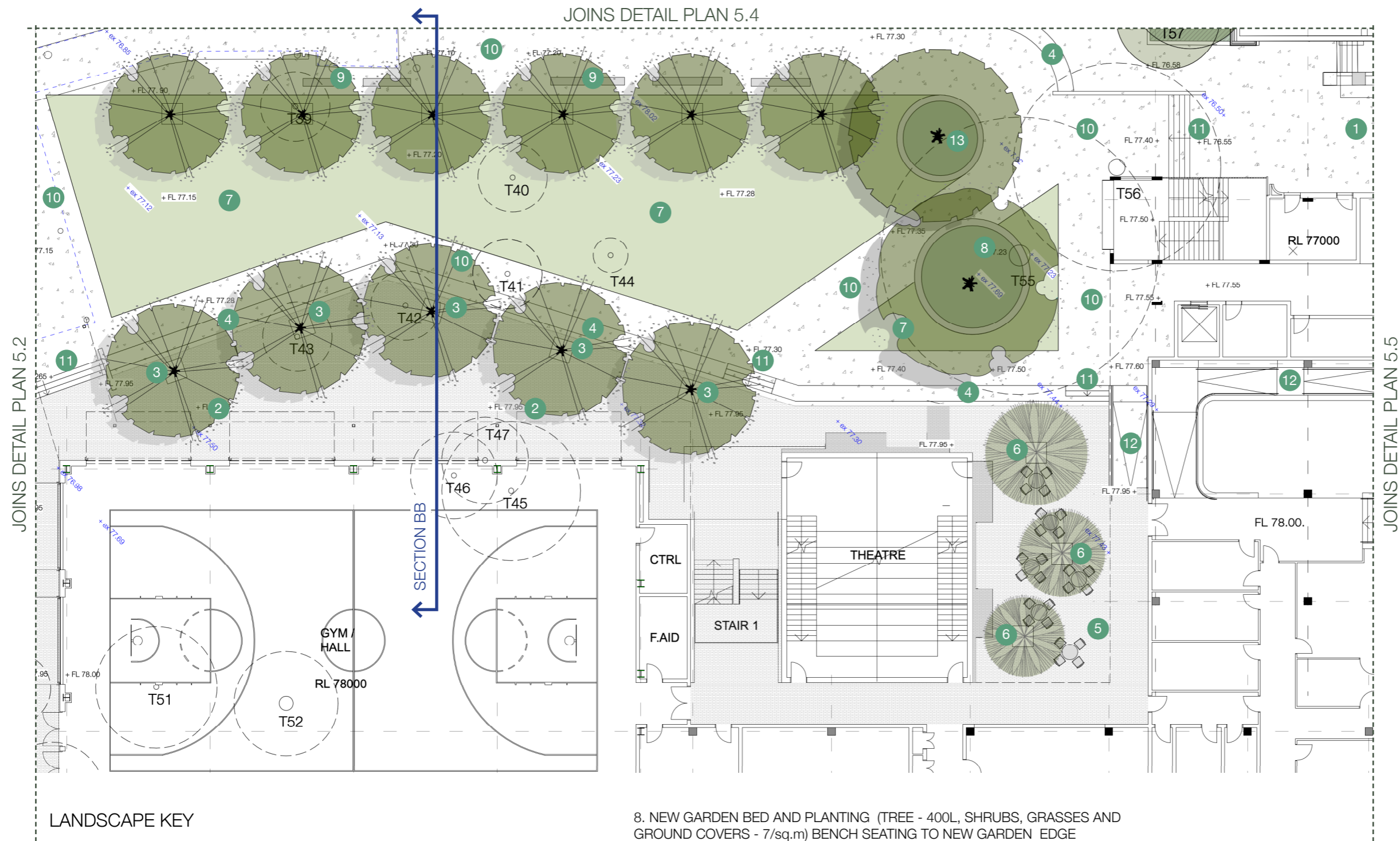
1. EXISTING ENTRY GATES TO BE RETAINED
2. RAISED PATHWAY WITH SEATING NODES / PLATFORMS IN GARDEN ALONG MILITARY ROAD FRONTAGE
3. EXISTING TREE RETAINED AND NEW GARDEN BED (PLANTING 7/sq.m)
4. EXISTING RAMP ACCESS TO BUILDING A TO BE RETAINED
5. EXISTING BOUNDARY FENCE AND SCREEN PLANTING TO BE RETAINED
6. NEW CONCRETE PAVEMENT AND DDA ACCESS TO HALL AND LAWN TERRACE
7. NATIVE TREES IN PAVEMENT (400L)
8. CONCRETE STAIRS (TGSI'S, HANDRAILS AND NOSINGS TO AS 1428)
9. BRICK PAVEMENT TO SCHOOL HALL FORECOURT
10. BENCH SEATING
11. EXISTING PAVEMENT AND RETAINING WALL TO BE RETAINED
12. NEW GARDEN BED - PLANTING 7/sq.m)
13. EXISTING TREES AND GARDEN BED BELOW TO BE RETAINED
14. EXISTING STREET TREES TO BE RETAINED
15. EXISTING PUBLIC DOMAIN TO MILITARY ROAD AND AVENUE ROAD TO BE RETAINED
16. PROPOSED BIKE PARKING



SCALE
1 : 250 @ A3



5.3 detail plan



LANDSCAPE KEY

1. MAIN ENTRY FROM BELMONT ROAD

2. BRICK PAVEMENT TO SCHOOL HALL FORECOURT

3. DECIDUOUS TREES IN PAVEMENT (400L)

4. CONCRETE BLEACHERS

5. BRICK PAVEMENT TO CANTEEN FORECOURT AND DINING AREA

6. PALMS IN PAVEMENT (VARYING HEIGHTS)

7. SYNTHETIC LAWN TERRACE WITH TREE PLANTING (400L)
8. NEW GARDEN BED AND PLANTING (TREE - 400L, SHRUBS, GRASSES AND GROUND COVERS - 7/sq.m) BENCH SEATING TO NEW GARDEN EDGE

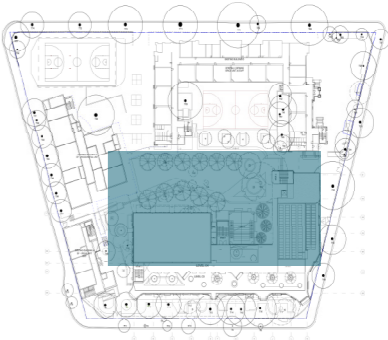
9. BENCH SEATING ALONG EDGE OF NEW LAWN TERRACE

10. NEW CONCRETE PAVEMENT

11. CONCRETE STAIRS (TGSI'S, HANDRAILS AND NOSINGS TO AS 1428)

12. DDA ACCESS RAMPS INTO SCHOOL AND BETWEEN TERRACE LEVELS

13. FEATURE COURTYARD TREE (MAGNOLIA) IN RAISED GARDEN BED WITH SEATING SURROUND (GRASSES AND GROUND COVERS - 7/sq.m, TREES 400L)



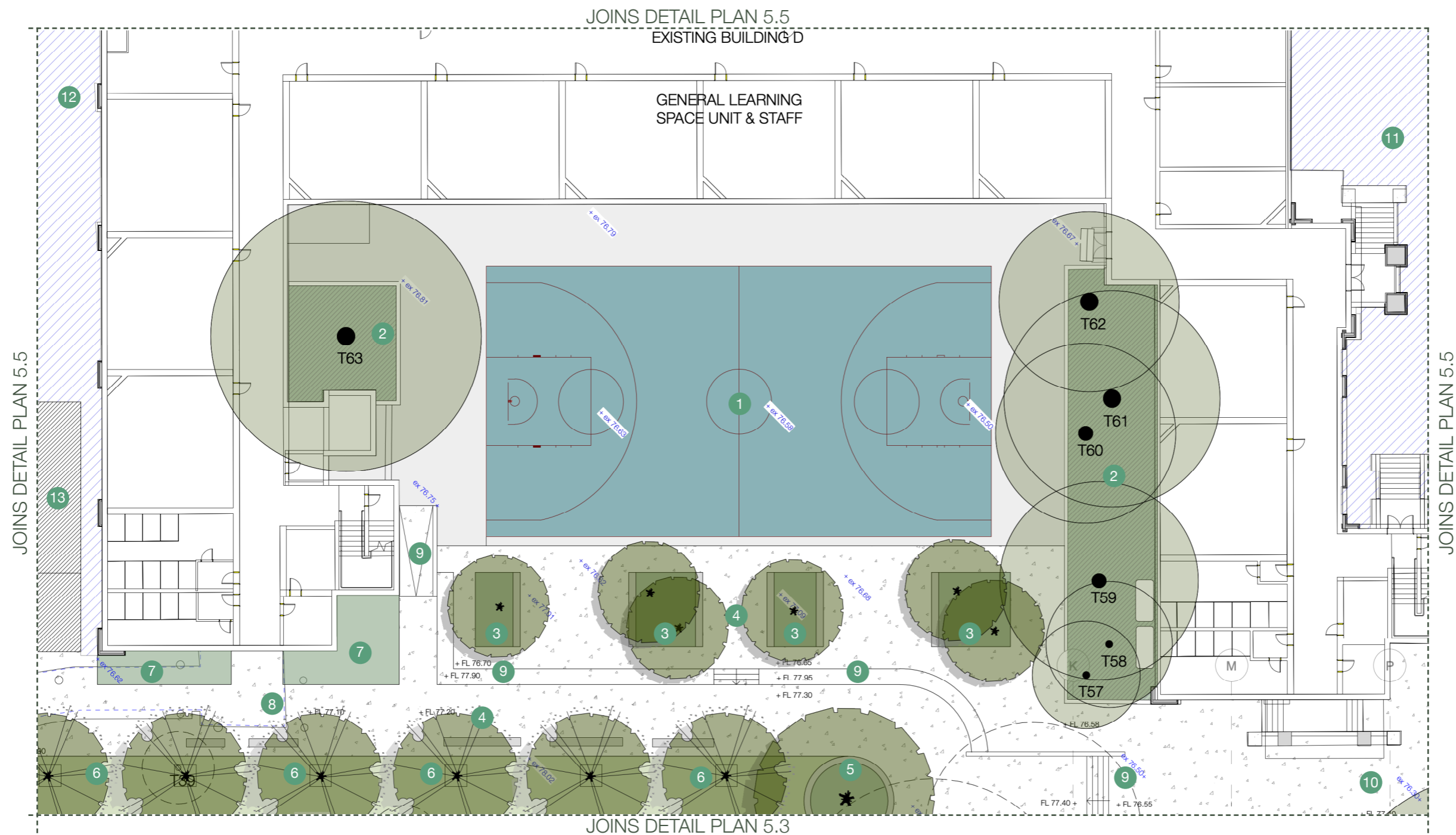
SCALE
1 : 250 @ A3



5.3 detail section bb

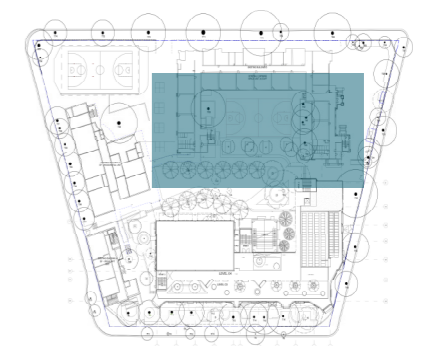


5.4

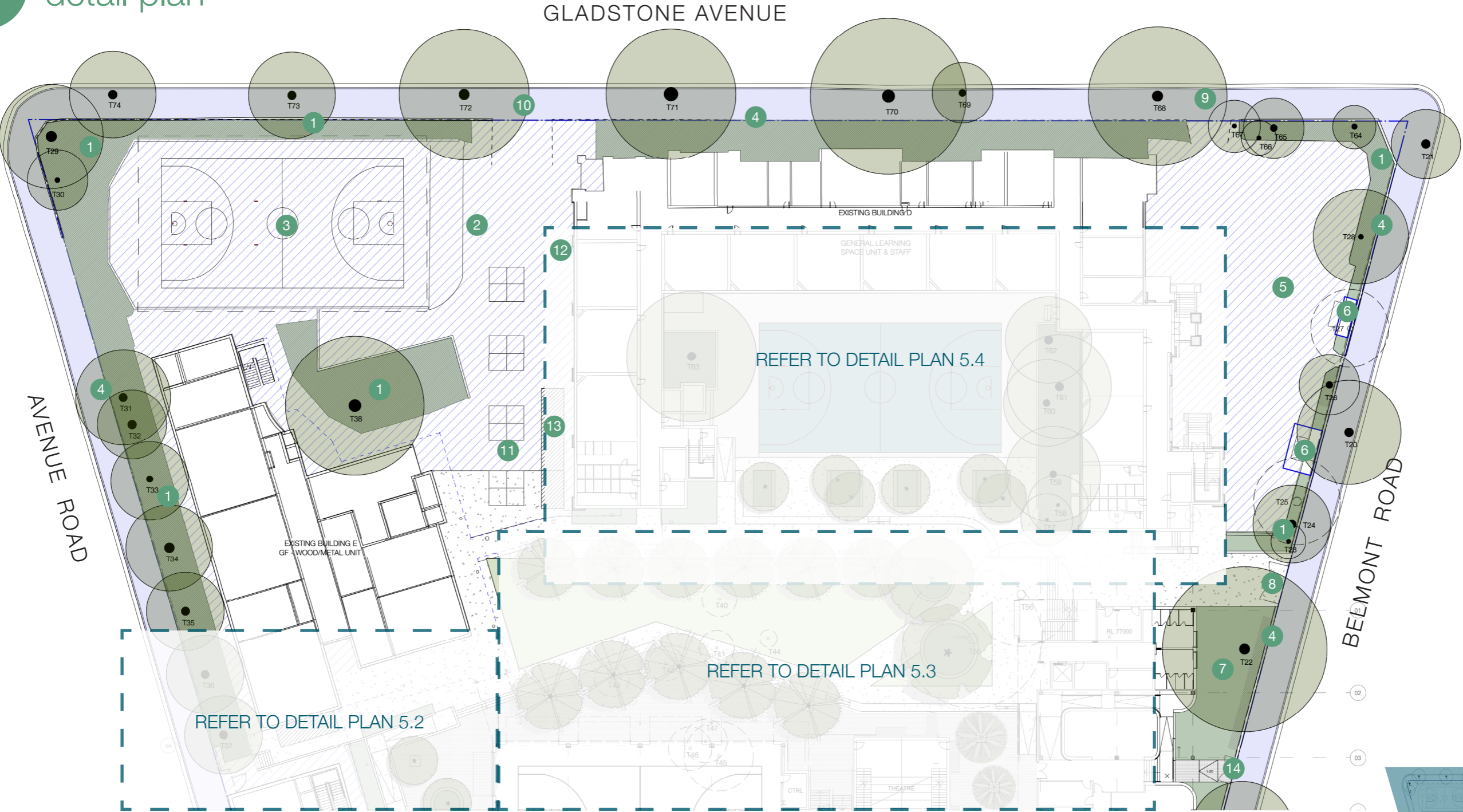


LANDSCAPE KEY

- | | |
|--|--|
| 1. EXISTING BASKETBALL COURT TO BE RETAINED AND RESURFACED | 7. NEW GARDEN BED (SHRUBS, GRASSES AND GROUND COVERS - 7/sq.m) |
| 2. EXISTING TREES AND GARDEN BED TO BE RETAINED | 8. EXISTING WALKWAY LINK OVER (DASHED BLUE) TO BE RETAINED |
| 3. NEW GARDEN BEDS TO LOWER TERRACE WITH NATIVE TREE AND GRASS PLANTING (GRASSES AND GROUND COVERS - 7/sq.m, TREES 400L) | 9. CONCRETE BLEACHERS, STAIRS AND RAMP (1:21) (TGSI'S, HANDRAILS AND NOSINGS TO AS 1428) |
| 4. NEW CONCRETE PAVEMENT AND SEATING AREA | 10. NEW ENTRY WALKWAY FROM BELMONT AVE |
| 5. FEATURE COURTYARD TREE (MAGNOLIA) IN RAISED GARDEN BED WITH SEATING SURROUND (GRASSES AND GROUND COVERS - 7/sq.m, TREES 400L) | 11. EXISTING ASPHALT CARPARK TO BE RETAINED |
| 6. LAWN TERRACE WITH TREES PLANTING (400L) | 12. BIN STORE |
| | 13. POPOSED BIKE PARKING |



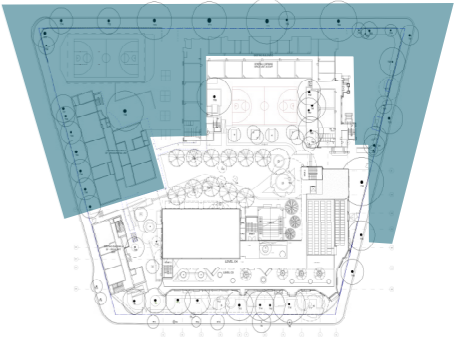
5.5 detail plan



LANDSCAPE KEY

- 1. EXISTING TREES AND GARDEN BEDS TO BE RETAINED
- 2. EXISTING PAVEMENT TO BE RETAINED
- 3. EXISTING COLA AND BASKETBALL COURT TO BE RETAINED
- 4. EXISTING BOUNDARY WALL AND FENCE TO BE RETAINED
- 5. EXISTING ASPHALT CARPARK TO BE RETAINED
- 6. NEW SUBSTATION AND HYDRANT PUMP AND BOOSTER
- 7. EXISTING FICUS TO BE RETAINED. NEW GARDEN BED BELOW PLANTED WITH SHRUBS, GRASSES AND GROUND COVERS (7/sq.m)

- 8. NEW MAIN ENTRY TO SCHOOL FROM BELMONT AVENUE
- 9. EXISTING VEHICLE ENTRY TO BE RETAINED
- 10. EXISTING SERVICE ENTRY TO BE RETAINED
- 11. HANDBALL LINEMARKING
- 12. BIN STORE
- 13. PROPOSED BIKE PARKING
- 14. VISITOR ENTRY FROM BELMONT AVE



SCALE
1 : 600 @ A3

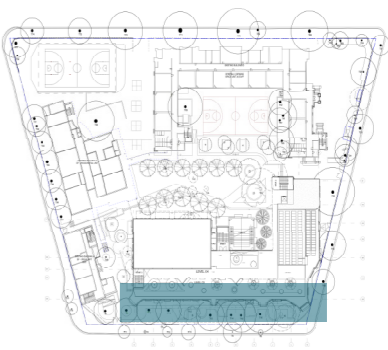


5.6 detail plan - level 3 library terrace



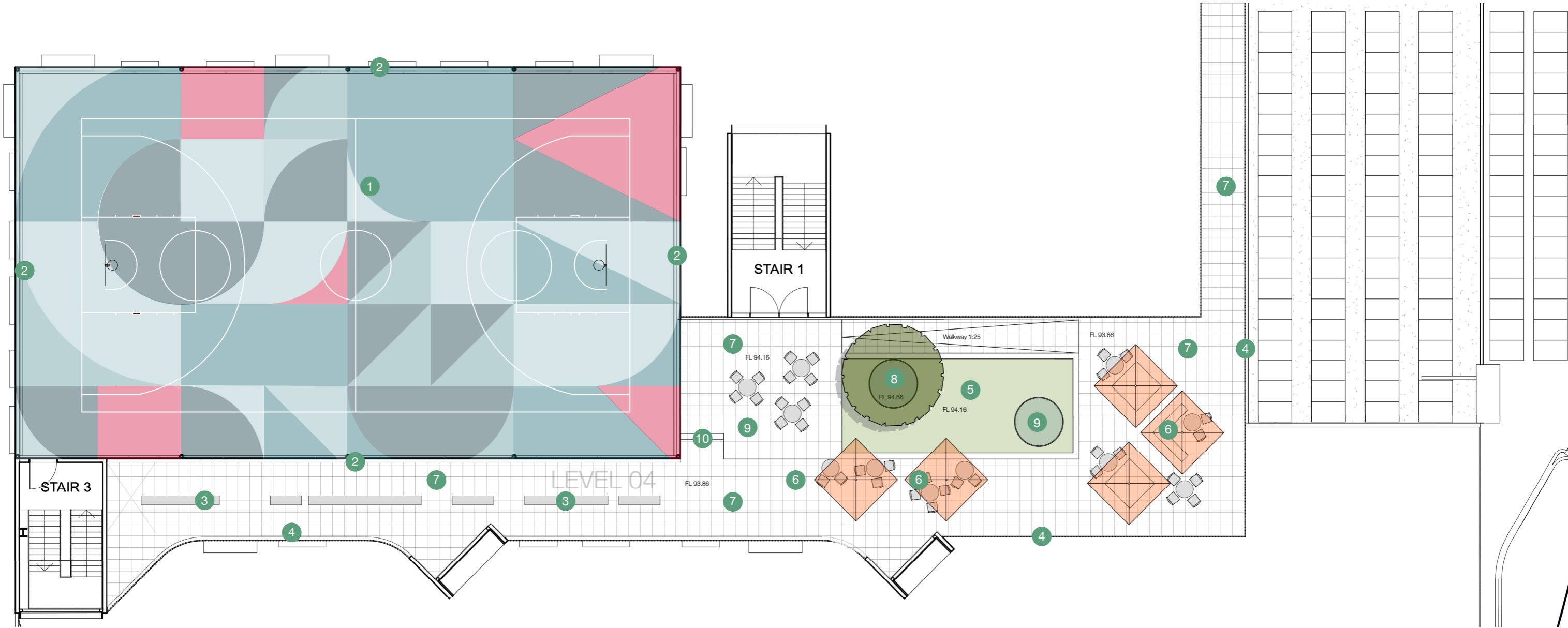
LANDSCAPE KEY

- 1. 450MM HIGH LAWN (SYNTHETIC) WITH SEATING EDGE
- 2. CIRCULAR PLANTER WITH NATIVE TREES (200L) AND GRASSES AND GROUND COVERS (7/sq.m)
- 3. SEATING AND TABLES WITH FIXED SHADE UMBRELLAS OVER
- 4. UNIT PAVING TO LIBRARY TERRACE
- 5. 500MM HIGH PLANTER PLANTED SHRUBS, GRASSES AND GROUND COVERS (7/sq.m)
- 6. 1800MM HIGH BOUNDARY SCREEN
- 7. 900MM HIGH WORK BENCH / LUNCH TABLE



SCALE
1 : 250 @ A3





LANDSCAPE KEY

1. PAINTED CONCRETE MULTICOURT

2. BOUNDARY SCREEN / NET TO MULTICOURT

3. BENCH SEATING

4. 1800MM HIGH BOUNDARY SCREEN

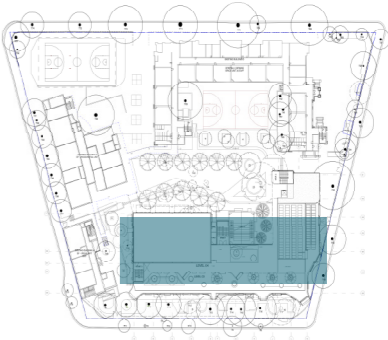
5. RAISED LAWN TERRACE

6. SEATING AND TABLES WITH FIXED SHADE UMBRELLAS OVER
7. UNIT PAVING TO ROOFTOP TERRACE

8. 1000MM HIGH PLANTER PLANTED WITH NATIVE TREE (400L) AND GRASSES AND GROUND COVERS (7/sq.m)

9. 500MM HIGH PLANTER PLANTED SHRUBS, GRASSES AND GROUND COVERS (7/sq.m)

10. CONCRETE STAIRS (TGSI'S, HANDRAILS AND NOSINGS TO AS 1428)



SCALE
1 : 250 @ A3



6.0 materials



CONCRETE PAVEMENT

LIGHTLY EXPOSED AGGREGATE CONCRETE.

FINISH TO COMPLY WITH P4 SLIP RATING FOR GENERAL PAVEMENT, P5 FOR STEPS AND RAMPS.



LAWN

SYNTHETIC TURF HARD WEARING AND LOW MAINTENANCE MAKING IT IDEAL FOR USE IN THE PLAYGROUND.



MULTI COURT

PAINTED SURFACE FOR BALL GAMES.

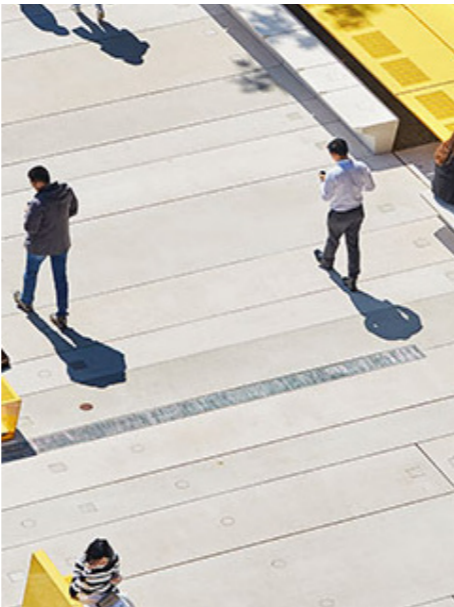
FINISH TO COMPLY WITH P4 SLIP RATING FOR GENERAL PAVEMENT, P5 FOR STEPS AND RAMPS.



BRICK PAVEMENT AND WALL SEATING

BRICKS TO MATCH ARCHITECTURE

WALL - 350MM HIGH X 470MM WIDE X LENGTHS VARY



CONCRETE SLEEPERS

LIGHTLY EXPOSED AGGREGATE CONCRETE.

FINISH TO COMPLY WITH P4 SLIP RATING FOR GENERAL PAVEMENT, P5 FOR STEPS AND RAMPS.



CONCRETE BLEACHERS

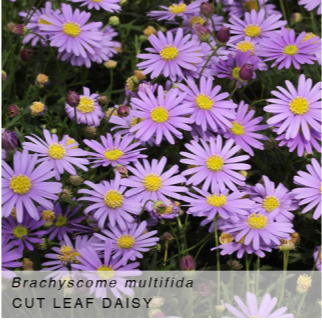
LIGHTLY EXPOSED CONCRETE.

FINISH TO COMPLY WITH P5 SLIP RATING FOR STEPS AND RAMPS.

7.0

planting

Botanical Name	Common Name	Pot Size L/mm	Height (m)
TREES			
<i>Backhousia citriodora</i>	Lemon Scened Myrtle	400L	6
<i>Banksia integrifolia</i>	Coastal Banksia	400L	15
<i>Elaeocarpus reticulatus</i>	Blueberry Ash	400L	8
<i>Eucalyptus punctata</i>	Grey Gum	200L	20
<i>Glochidion ferdinandi</i>	Chese Tree	400L	10
<i>Livistona australis</i>	Cabbage Tree Palm	3-5CTH	20
<i>Lophostemon confertus</i>	Brushbox	400L	15
<i>Magnolia grandiflora</i>	Magnolia	400L	10
<i>Melaleuca quinquenervia</i>	Broad Leafed Paperbark	400L	15
<i>Pyrus ussuriensis</i>	Manchurian Pear	400L	12
<i>Tristaniopsis 'Luscious'</i>	Luscious Water Gum	400L	8



7.0

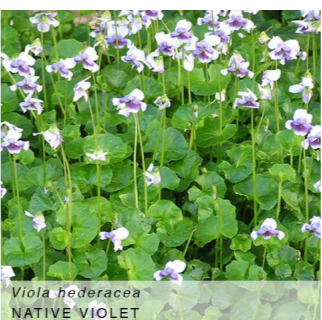
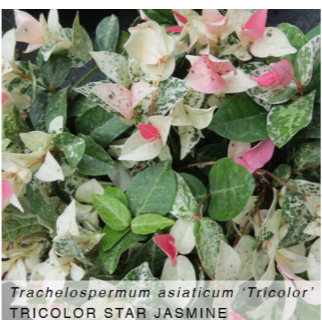
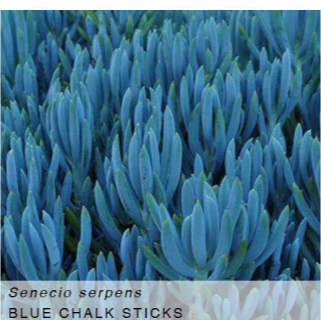
planting

Botanical Name	Common Name	Pot Size L/mm	Height (m)
SHRUBS & GROUNDCOVERS			
<i>Acmena smithii</i> ‘Sublime’	Sublime Lilly Pilly	300mm	5
<i>Adenanthos sericeus</i> ‘Compact’	Dwarf Woolly Bush	200mm	1.5
<i>Asplenium austrasicum</i>	Birds Nest Fern	200mm	1.2
<i>Aspidistra elatior</i>	Cast Iron Plant	150mm	0.7
<i>Beschorneria yuccoides</i>	Mexican Lily	200mm	0.7
<i>Blechnum</i> ‘Silver Lady’	Silver Lady Fern	200mm	0.8
<i>Brachyscome multifida</i>	Cut Leaf Daisy	150mm	0.2
<i>Callistemon</i> ‘Better John’	Better John	200mm	0.8
<i>Carpobrotus glaucescens</i>	Pigface	150mm	0.1
<i>Casuarina</i> ‘Cousin It’	Cousin It	150mm	0.1
<i>Crassula</i> ‘Blue Bird’	Blue Bird Jade	200mm	0.7
<i>Dianella caerulea</i>	Flax Lily	150mm	0.4
<i>Dichondra</i> ‘Silver Falls’	Silver Falls Kidney Weed	150mm	0.1
<i>Doodia aspera</i>	Rasp Fern	150mm	0.2
<i>Doryanthes excelsa</i>	Gymea Lily	200mm	1.5
<i>Hardenbergia violacea</i>	Purple Coral Pea	150mm	0.2
<i>Hibbertia scandens</i>	Snake Vine	150mm	0.2
<i>Isolepis nodosa</i>	Knobby Club Rush	150mm	0.7
<i>Isopogon anethifolius</i>	Drumsticks	200mm	1.2
<i>Juniperus conferta</i>	Shore Juniper	150mm	0.1
<i>Lomandra longifolia</i> ‘Nyalla’	Nyalla Matt Rush	150mm	0.7
<i>Lomandra</i> ‘Tanika’	Tanika Matt Rush	150mm	0.6
<i>Lomandra</i> ‘Verday’	Verday Matt Rush	150mm	0.7
<i>Murraya paniculata</i>	Orange Jessamine	200mm	5
<i>Myoporum parvifolium</i> ‘Yareena’	Yareena Creeping Boobialla	150mm	0.2
<i>Philodendron</i> ‘Xanadu’	Xanadu	200mm	1
<i>Pittosporum</i> ‘Miss Muffet’	Miss Muffet	200mm	0.8
<i>Pultenaea daphnoides</i>	Large Leafed Bush Pea	150mm	2.5
<i>Rhaphiolepis</i> ‘Orient Pearl’	Oriental Pearl	200mm	0.8
<i>Russelia equisetiformis</i>	Coral Plant	150mm	0.4

All planting areas to be mulched, typically 75mm depth. Organic mulch to conform to AS44454-2012 compost, soil conditioners and mulches.

Soils to conform to Soils for Landscaping and Garden Use – AS 4419-2018.

Tree supply to be a standard that allows them to establish rapidly and grow to a maturity and to conform to the guidelines given in natspec guide, specifying trees - a guide to assessment of tree quality and AS2303-2015 : Tree stock for landscape use.



- *Demonstrate how recommendations from the Arboricultural report will be implemented to protect the root zones of the existing trees to be retained (particularly along Military Road). Consideration may need to be given to elevated walkways to minimise and / or avoid excavation.*

The current proposal includes the use of an elevated walkway so that minimal impact on tree roots along the Military Road frontage will be achieved. Along with minimal disturbance to the root systems improving soil conditions will be proposed to enhance the longevity of Screen Planting.

- *The scheme proposes a canopy cover of 24.6%, which increases the existing tree canopy on the site by 3.4%. While a target of 40% canopy cover (indicated in the Draft 'Greener Places Guide') may be unachievable given the site's urban context, the panel recommends that the proposed canopy cover be increased to provide a minimum of 30%.*

The Current proposal (including Levels 3 & 4 after Structural Input) tree canopy cover is 23.5%. Additional tree planting (24 trees) could be included to achieve 27.7% tree canopy (See diagram to right). This is currently out of the scope of work for this project and would need to be instructed by SINSW to include in the current proposal for SSDA approval

- *Provide plant species that are indigenous to the area and demonstrate how the landscape will be used as a learning opportunity for students.*

The proposed plant palette is predominantly native with an emphasis on endemic plant species where appropriate. A Native Orchard is proposed along with bush tucker planting that generates the opportunity for Food Tech and Science Learning on the Library Terrace and lower terrace.

- *Illustrate how recreation spaces are designed to address the specific needs of students of different ages, abilities and genders.*

A range of activity zones are included in the design for both Active (basketball / handball/) and passive play as well as areas for quiet study. It is proposed that some areas be developed to cater for Senior Students (potentially the rooftop areas). This will be developed further with the school.

- *Provide a CPTED analysis of the scheme and incorporate recommendations to provide clear access control and mitigate opportunities for concealment. Given the diversity of recreation spaces, demonstrate how surveillance will be managed.*

A CPTED Analysis has been included in section 1.6 of this submission.

- *Provide drawings with RLs to illustrate that circulation between buildings is safe, weather protected, accessible and inclusive to people with different needs and capabilities. Clarify DDA accessibility between entry points, landscape areas and built form.*

A set of Landscape Concept Plans have been submitted along with this report. A DDA Access and circulation diagram is included in section 1.7 of this submission.



9.0

contact details

Black Beetle Pty Ltd
Suite 05 | Level 1 | 1073 Pittwater Road
Collaroy, NSW 2097

E: blackbeetle@blackbeetle.com.au
W: www.blackbeetle.com.au
@ @blackbeetle_studio
ABN 38 143 570 816
ACN 143 570 816

Project Contact

Name: Iliia Kokalevski AILA
Registered Landscape Architect #1330
Phone: 0422 104 416
E-mail: ilia@blackbeetle.com.au

Name: Giselle Barron AILA
Registered Landscape Architect #1316
Phone: 0418 270 382
E-mail: giselle@blackbeetle.com.au