

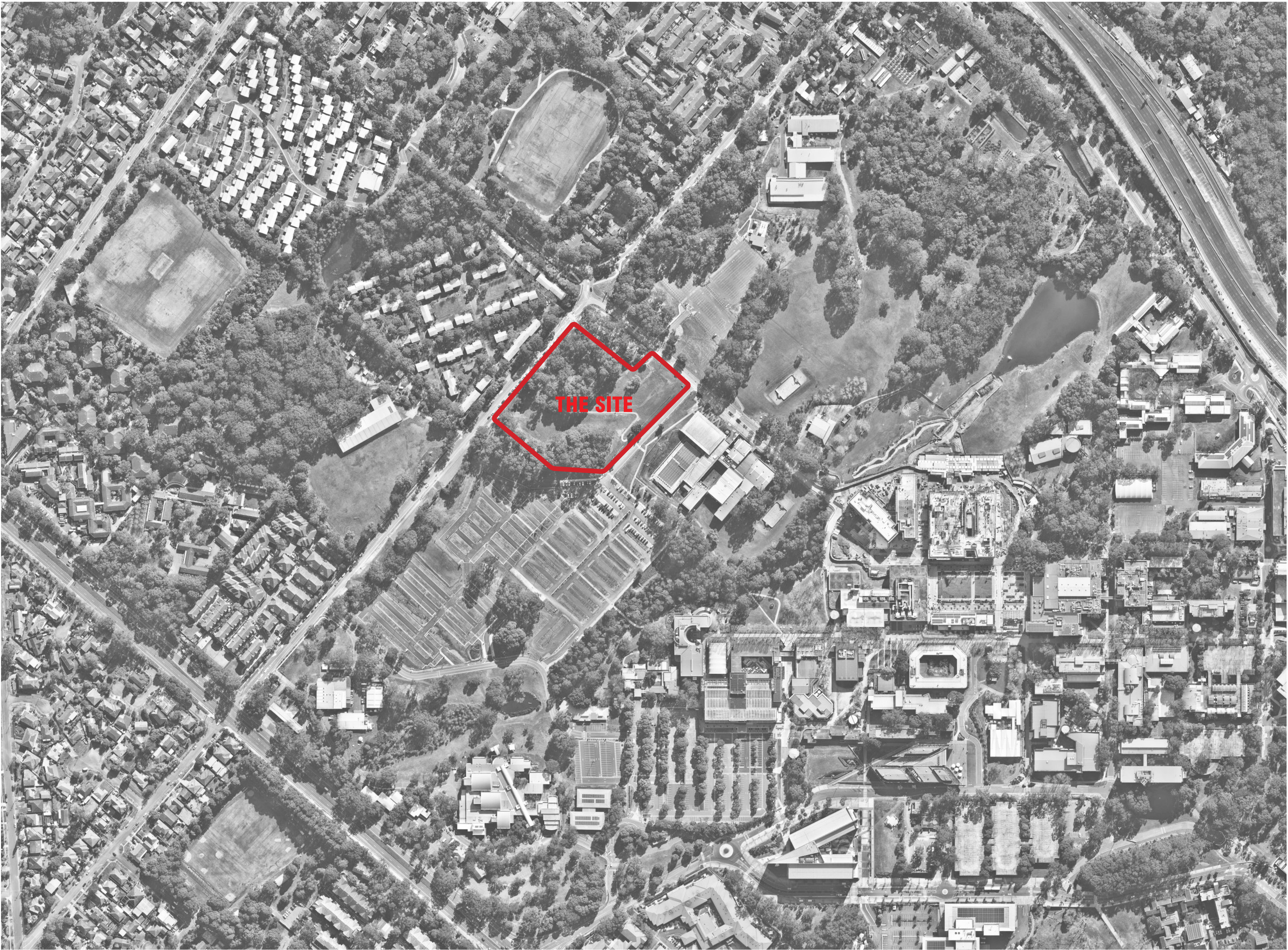
# Royal Institute for Deaf and Blind Children

## Centre of Excellence SSDA

### Landscape Drawings

#### DRAWING LIST

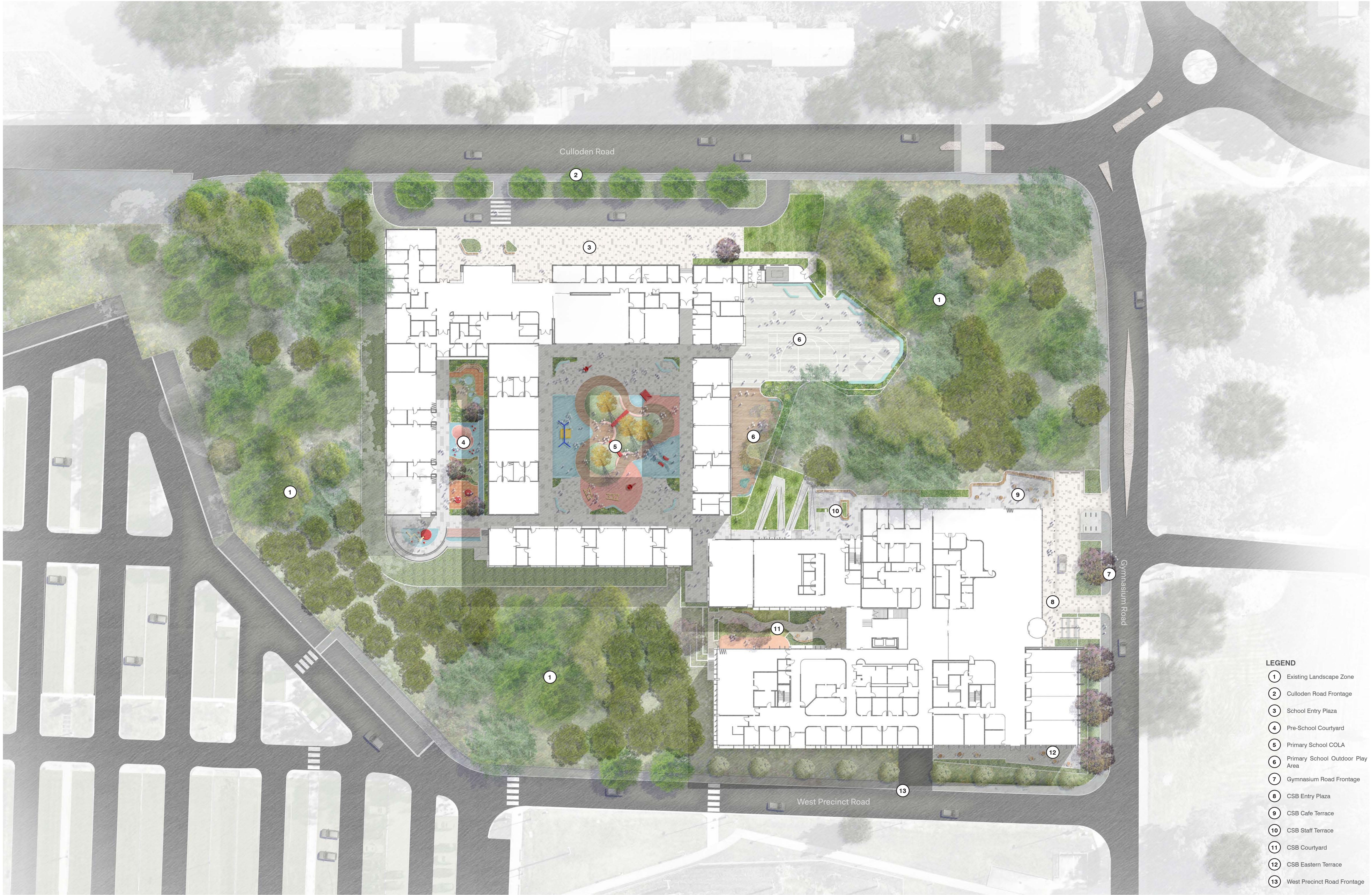
TITLE	DWG No.	Rev
COVER SHEET	L-000	B
LANDSCAPE MASTERPLAN	L-001	B
INDICATIVE PLANTING SCHEDULE	L-002	B
INDICATIVE MATERIALS PALETTE	L-003	B
TREE MANAGEMENT PLAN	L-004	B
LEVELS AND GRADING PLAN	L-005	B
SCHOOL KEY PLAN - UPPER GROUND	L-100	B
CULLODEN ROAD FRONTAGE	L-101	B
SCHOOL ENTRY	L-102	B
PRE-SCHOOL COURTYARD	L-103	B
PRIMARY SCHOOL COLA	L-104	B
OUTDOOR PLAY AREA	L-105	B
CONSULTING SERVICES BUILDING KEY PLAY - LOWER GROUND	L-200	B
STAFF TERRACE	L-201	B
CAFE TERRACE	L-202	B
CONSULTING SERVICES BUILDING ENTRY	L-203	B
GYMNASIUM ROAD FRONTAGE	L-204	B
CONSULTING SERVICES BUILDING COURTYARD	L-205	B
WEST PRECINCT ROAD FRONTAGE	L-206	B
EASTERN TERRACE	L-207	B



CONTEXT PLAN









Trees

Botanical Name	Common Name	Mature Height and Spread	Key Sense	Native
<i>Acer palmatum 'Senkaki'</i>	Coral Bark Maple	6m x 5m	<div><div></div><div></div></div>	
<i>Angophora floribunda</i>	Rough-barked Apple	30m x 10m	<div><div></div></div>	✕
<i>Backhousia citriodora</i>	Lemon Myrtle	8m x 4m	<div><div></div><div></div></div>	✕
<i>Lagerstroemia indica</i>	Crepe Myrtle	6m x 4m	<div><div></div><div></div></div>	
<i>Jacaranda mimosifolia</i>	Jacaranda	10m x 8m	<div><div></div></div>	
<i>Syncarpia glomulifera</i>	Turpentine	25m x 12m	<div><div></div></div>	✕
<i>Eucalyptus pilularis</i>	Blackbutt	70m x 12m	<div><div></div></div>	✕
<i>Eucalyptus punctata</i>	Grey Gum	35m x 10m	<div><div></div></div>	✕
<i>Eucalyptus saligna</i>	Sydney Blue Gum	30m x 10m	<div><div></div></div>	✕
<i>Tristaniopsis laurina</i>	Water Gum	15m x 6m	<div><div></div></div>	✕
<i>Brachychiton acerifolius</i>	Illawarra Flame Tree	12m x 6m	<div><div></div></div>	✕

Sense Legend

- See
- Hear
- Touch
- Smell
- Taste



*Jacaranda mimosifolia*



*Acer palmatum 'Senkaki'*



*Largaestromea indica 'Infiniti Watermelon'*



*Tristaniopsis laurina*



*Anthrhopodium strictum*



*Carpobrotus rossii*



*Senecio serpens*



*Mentha australis*



*Leptospermum petersonii*



*Viola hederacea*



*Hibbertia scandens*



*Grevillea lanigera*



*Crassula arborescens ssp. undulatifolia*



*Atriplex cinerea*



*Lomandra hystrix*



*Correa alba*

Shrubs and Ground Covers

Botanical Name	Common Name	Mature Height and Spread	Key Sense	Native
<i>Arthropodium strictus</i>	Chocolate Lilly	0.5m x 0.3m	<div><div></div><div></div></div>	✕
<i>Arthropodium milleflorum</i>	Vanilla Lilly	0.5m x 0.3m	<div><div></div><div></div></div>	✕
<i>Aspidistra elatior</i>	Cast Iron Plant	0.6m x 0.45m		
<i>Atriplex cinerea</i>	Grey Saltbush	0.3m x 0.3m	<div><div></div><div></div></div>	✕
<i>Austromyrtus dulcis</i>	Midgen Berry	0.5m x 0.5m	<div><div></div><div></div></div>	✕
<i>Billardiera scandens</i>	Apple Berry	1m x 3m	<div><div></div><div></div></div>	✕
<i>Carpobrotus rossii</i>	Pig Face	0.4m x 3m	<div><div></div><div></div></div>	✕
<i>Calathea zebrina</i>	Zebra Plant	1m x 0.5m	<div><div></div></div>	
<i>Correa alba</i>	White Correa	1m x 1.5m	<div><div></div><div></div><div></div></div>	✕
<i>Crassula ovata</i>	Jade Plant	0.6m x 0.6m	<div><div></div><div></div></div>	
<i>Crassula arborescens</i>	Silver Dollar Plant	0.12m x 0.15m	<div><div></div></div>	
<i>Crassula arborescens ssp. undulatifolia</i>	Ripple Jade	1m x 1m	<div><div></div><div></div></div>	
<i>Ctenanthe burle-marxii</i>	Fishbone Prayer Plant	0.3m x 0.5m	<div><div></div></div>	
<i>Dichondra repens</i>	Kidney Weed	0.3m x 5m		✕
<i>Dichondra 'Silver Falls'</i>	Silver Falls	0.2m x 1.5m	<div><div></div></div>	✕
<i>Eremophila glabra prostrate</i>	Common Emu Bush	0.3m x 1m	<div><div></div></div>	✕
<i>Ficus elastica</i>	Rubber Plant	3m x 2m	<div><div></div></div>	
<i>Ficus lyrata</i>	Fiddle Leaf Fig	3m x 1m	<div><div></div></div>	
<i>Grevillea lanigera</i>	Woody Grevillea	1.5m x 1.5m	<div><div></div></div>	✕
<i>Gaura lindheimeri 'White Butterfly'</i>	White Gaura	1.2m x 0.9m	<div><div></div></div>	
<i>Gaura lindheimeri 'Pink Fantasy'</i>	Pink Fantasy	1m x 0.8m	<div><div></div></div>	
<i>Hibbertia scandens</i>	Snake Vine	3m x 5m	<div><div></div></div>	✕
<i>Leptospermum petersonii</i>	Lemon-scented Tea Tree	5m x 2m	<div><div></div><div></div></div>	✕
<i>Lomandra longifolia</i>	Lomandra	1.2m x 1m	<div><div></div></div>	✕
<i>Mentha australis</i>	Native Mint	0.7m x 1m	<div><div></div></div>	✕
<i>Myoporum parvifolium</i>	Creeping Boobialla	0.3m x 0.3m	<div><div></div></div>	✕
<i>Philodendron 'Xanadu'</i>	Philodendron 'Xanadu'	1m x 1m	<div><div></div></div>	
<i>Philodendron 'Little Phil'</i>	Philodendron 'Little Phil'	0.35m x 0.35m	<div><div></div></div>	
<i>Philodendron 'Rojo Congo'</i>	Rojo Philodendron	1m x 1m	<div><div></div></div>	
<i>Sansevieria trifasciata</i>	Snake Plant	1.2m x 0.4m	<div><div></div></div>	
<i>Senecio 'Blue Chalk Sticks'</i>	Blue Chalk Sticks	0.6m x 0.9m	<div><div></div><div></div></div>	
<i>Viola hederacea</i>	Native Violet	0.2m x 1m	<div><div></div><div></div><div></div></div>	✕



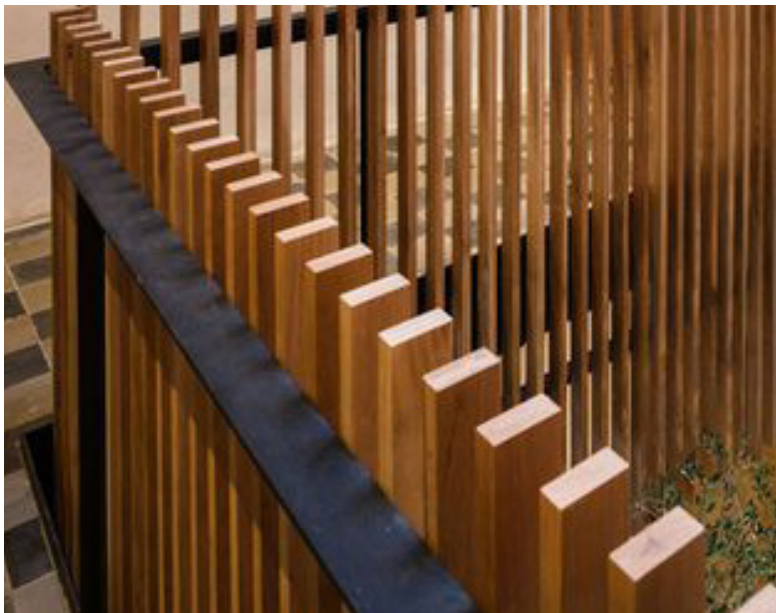
FENCES & WALLS



1.2m Palisade Fence



1.8m Security Perimeter Fence



Timber Screen Fence



Corten Steel Retaining walls (up to 600mm)



Off-form Shuttered Concrete Retaining walls

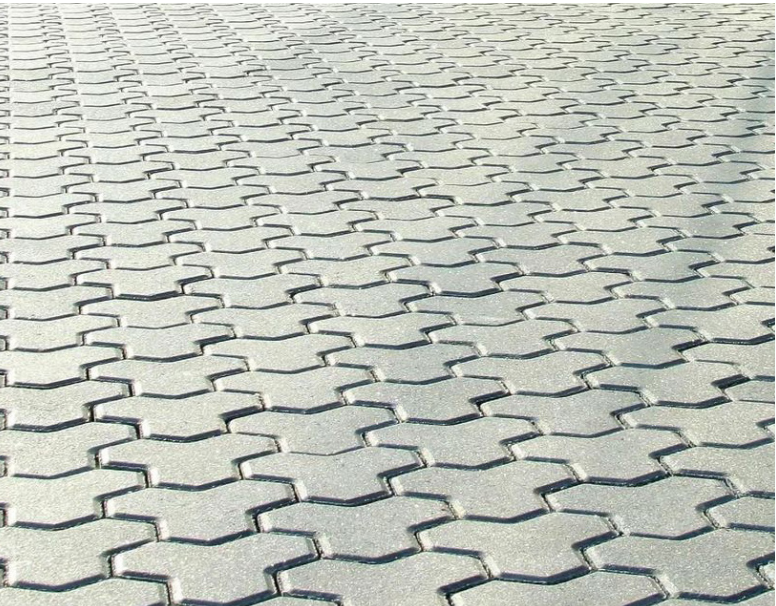


Corten Steel Terracing Retaining Walls

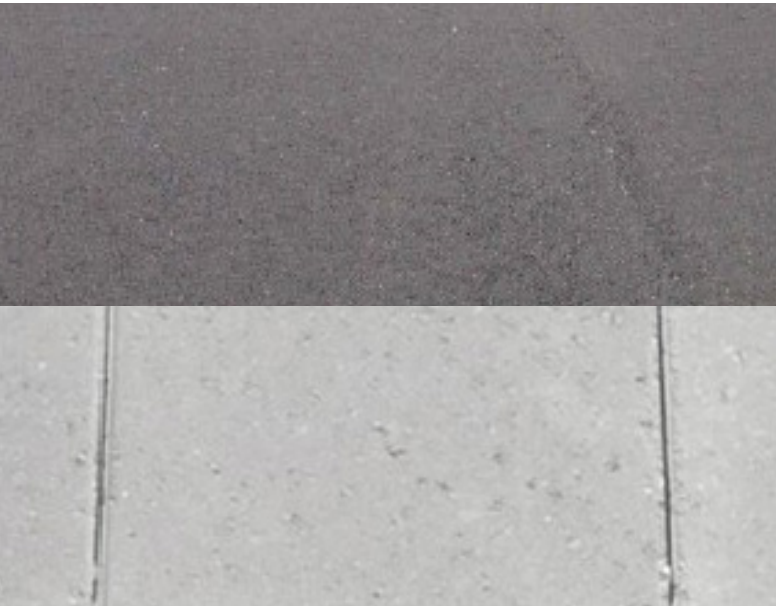
PAVING



Pedestrian Concrete Unit Pavers - Entry Plazas and internal courtyard paving



Vehicular Trihex - Natural 80mm Paving - Plaza Shared and Vehicle Zones



Concrete Paver Banded Asphalt Footpath - Gymnasium Rd and West Precinct Rd



Broom finished concrete footpath - Culloden Rd

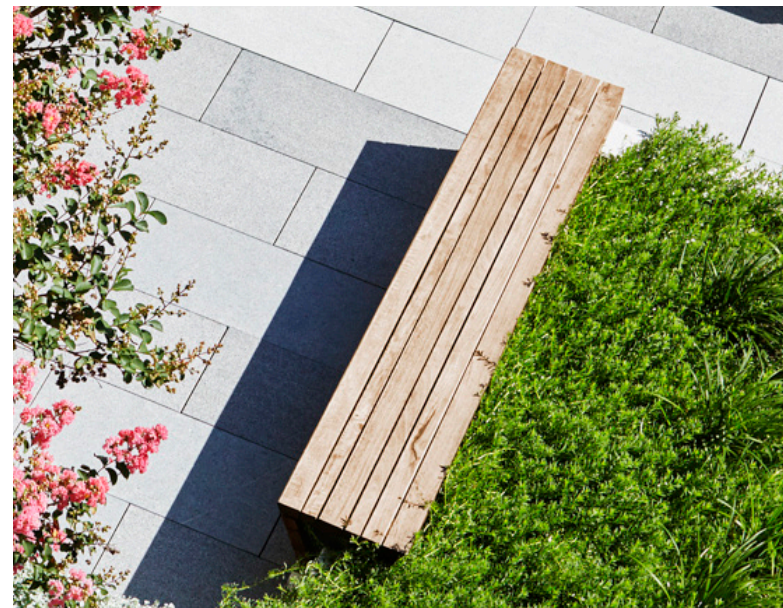


Softfall surfacing to play areas, mounds and amphitheater



Artificial turf to play areas and mounds

FURNITURE



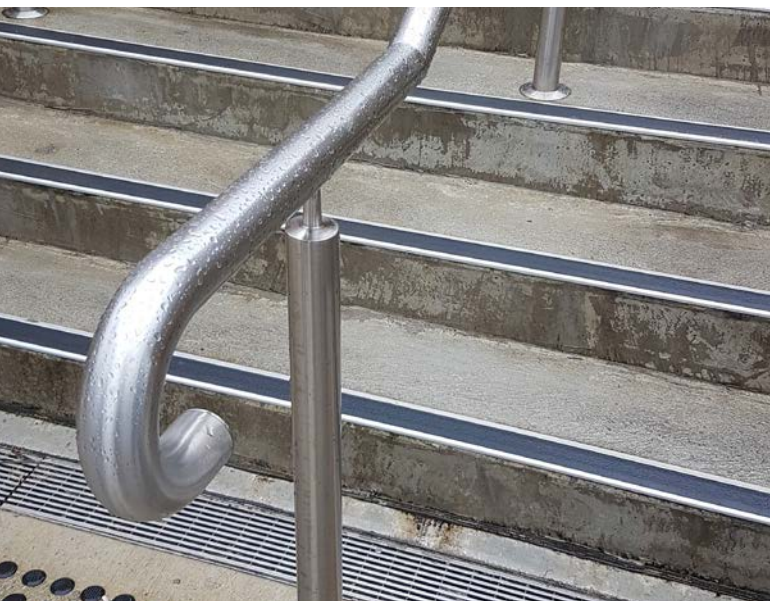
Hardwood Timber Bench



Hardwood Timber Decking Platforms and Seating



Hardwood Timber Seating Edges



Stainless Steel Handrails to AS1428



Water Play



Play Equipment

SOFTSCAPE



Feature Sensory Tree Planting



At Grade Textured Planting



Facade Screen Planting



Layered, Cascading Planting



Sensory Planting



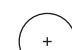


Street Tree Planting





LEGEND

-  Tree to be retained
-  Tree to be removed
-  Proposed Tree

O C U L U S  
level 1, 5 wilson street / post box 307 newtown nsw 2042  
p 02.9557.5533. f 02.9519.8323 mail@oculus.com.au



Date	Rev. Description	Rev
02/10/20	Issue for SSDA	A
11/11/20	Issue for SSDA	B

RIDBC Centre of Excellence

Tree Management Plan

scale: 1:400@A1  
job no.: S20-022  
date: 02/10/20

drawn by:  
checked:

CM  
KS



L - 004

A

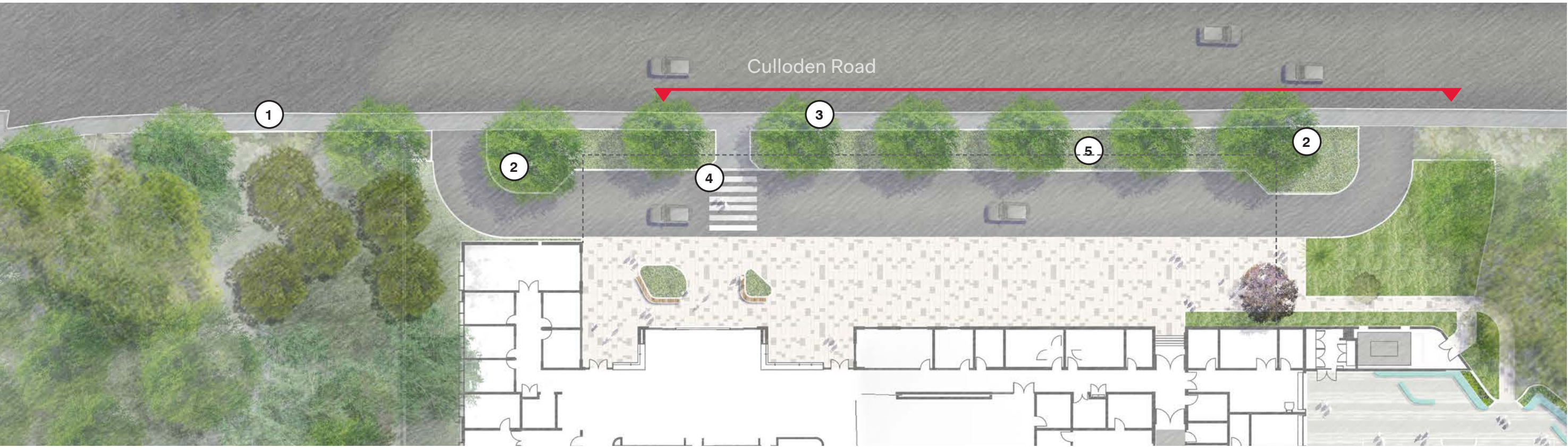












- LEGEND**
- ① New pedestrian footpath to back of kerb
  - ② Large trees to vehicle entry / exit
  - ③ Medium trees aligned to canopy openings
  - ④ Pedestrian crossing
  - ⑤ Low mass planted landscape buffer

Culloden Road Frontage - Plan



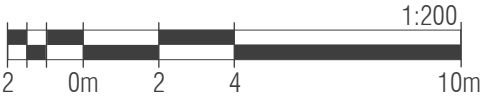
Culloden Road Frontage - Section

Feature tree and seating

Large native tree to vehicle entry

Medium native tree aligned to canopy structure

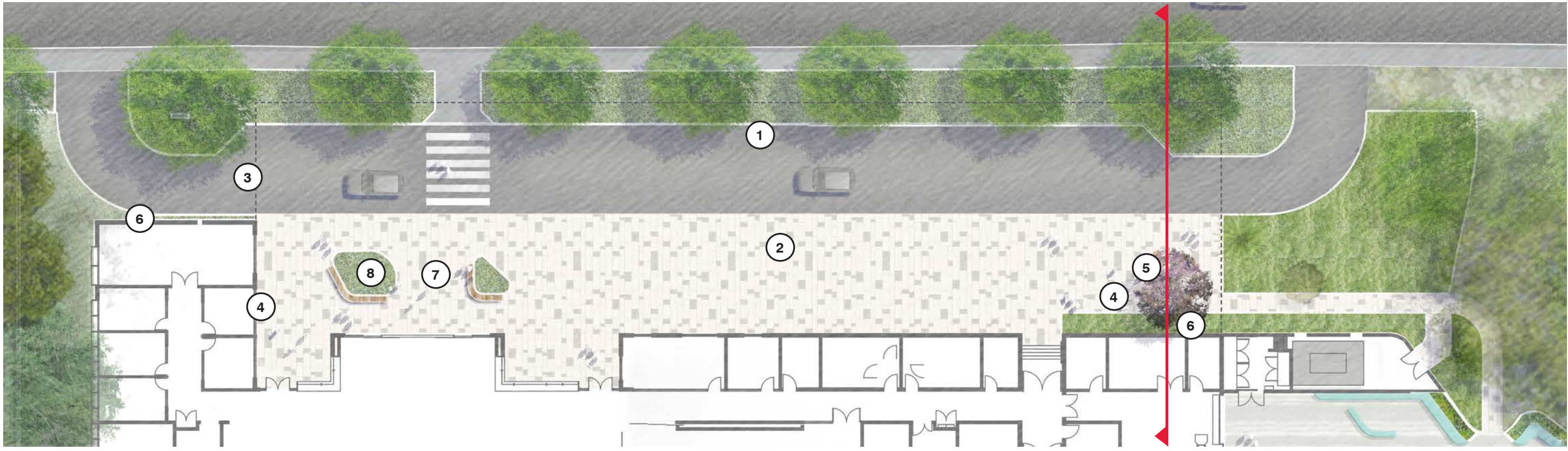
Low mass planted landscape buffer



Date	Rev. Description	Rev
02/10/20	Issue for SSDA	A
11/11/20	Issue for SSDA	B







School Entry - Plan

- LEGEND
- 1

Parallel parking
- 2

Bus parking
- 3

Extent of canopy
- 4

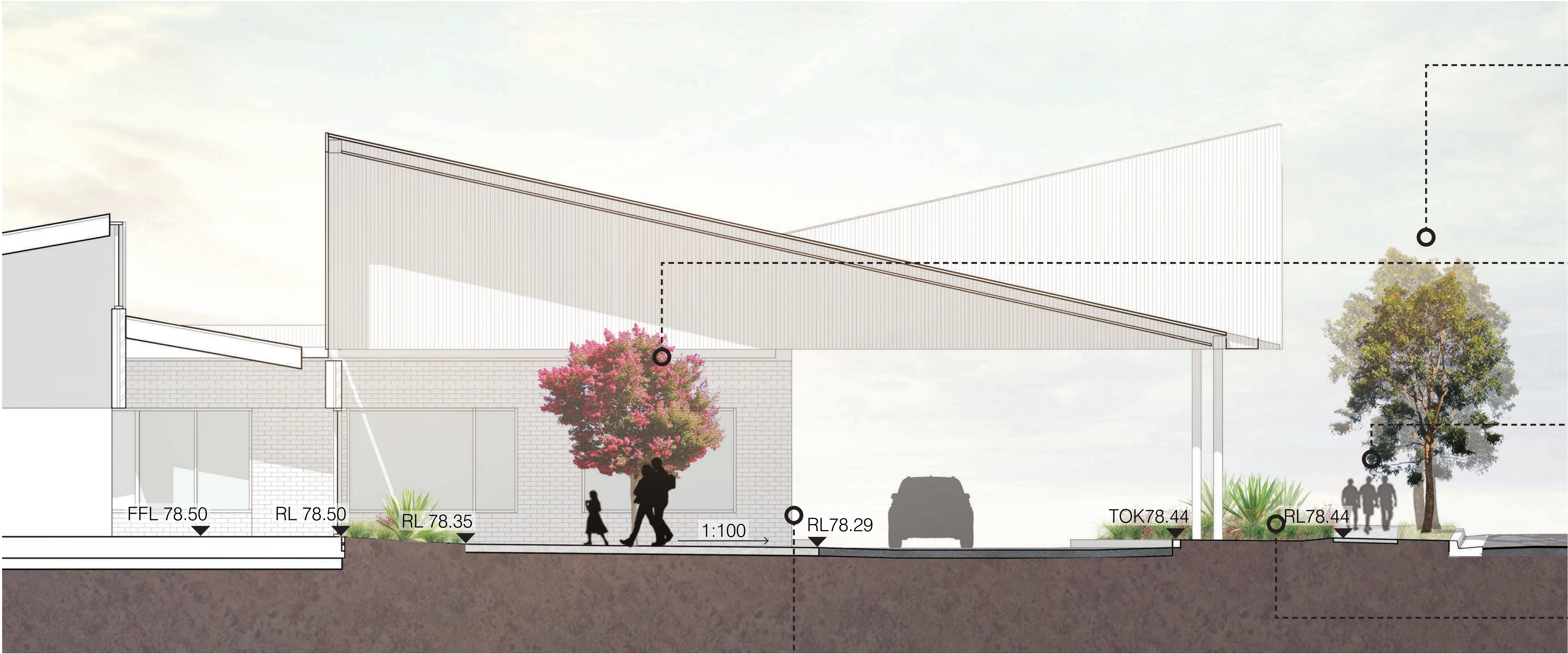
Entry seating
- 5

Feature tree
- 6

Facade planting
- 7

Concrete unit paving
- 8

Raised planters



School Entry - Section



Medium native tree



Small feature tree with seating



Public pedestrian path



Flush mass planting to verge

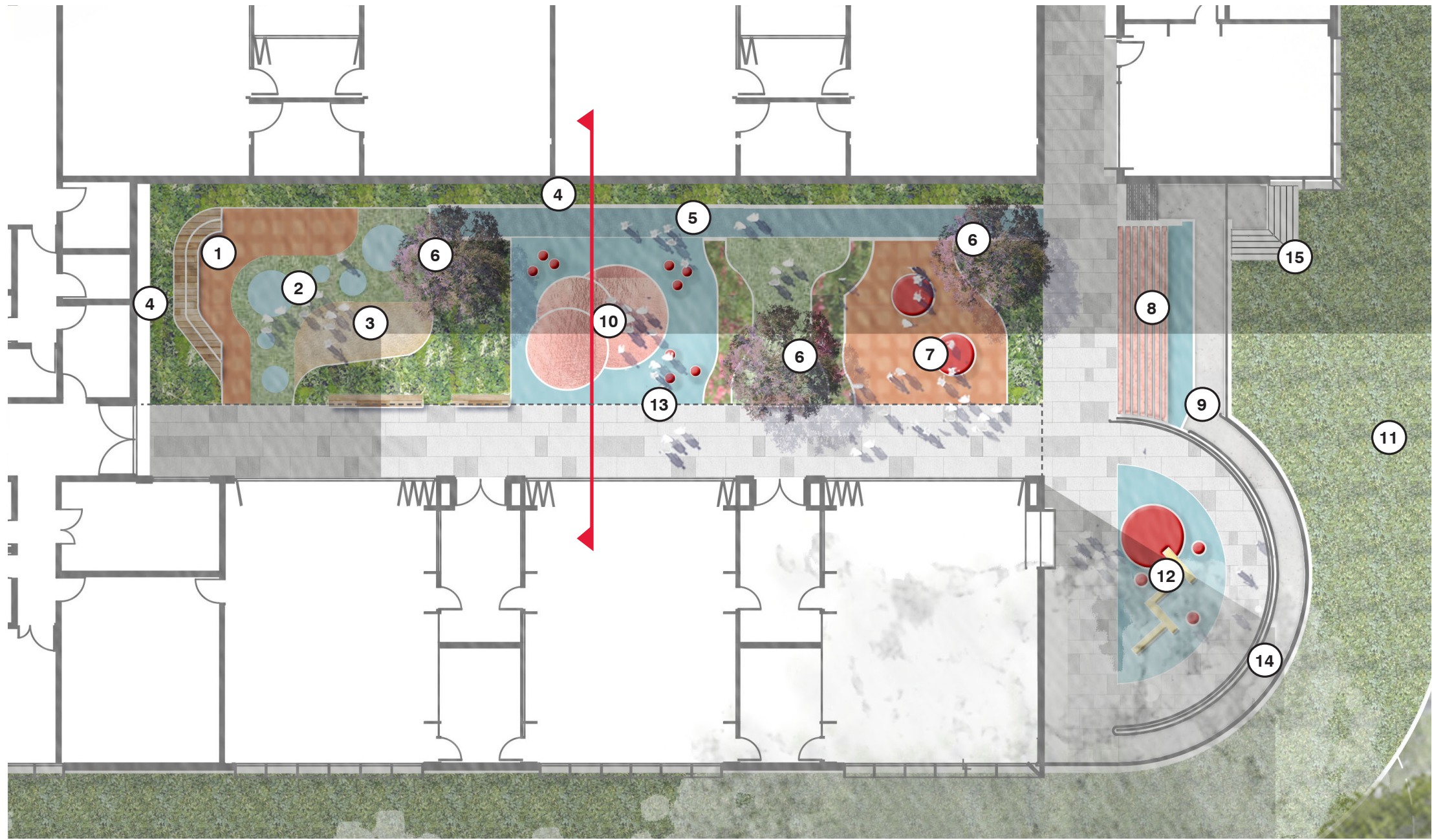


Climbing planting to building wall

Date	Rev. Description	Rev
02/10/20	Issue for SSDA	A
11/11/20	Issue for SSDA	B

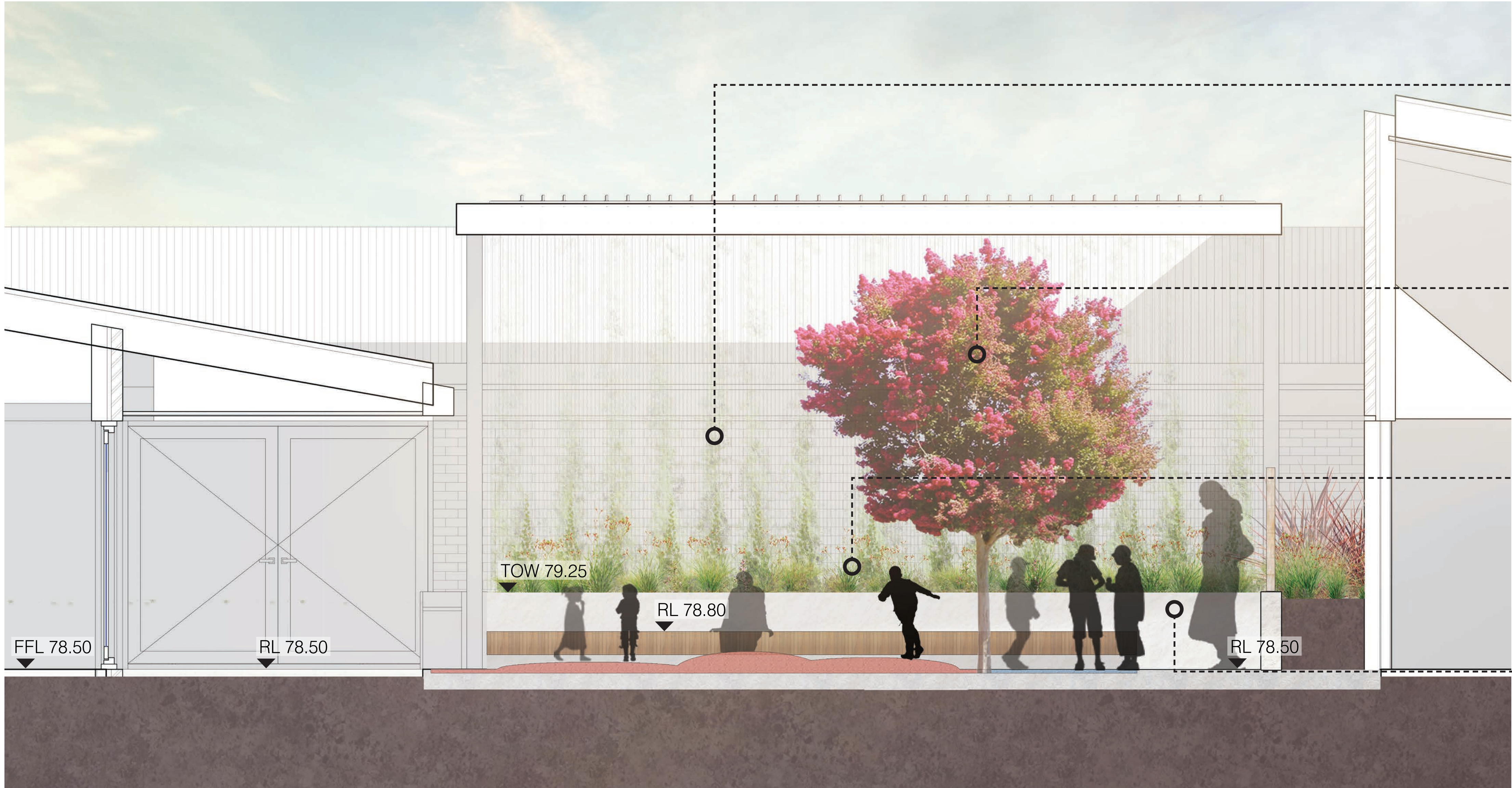






- LEGEND**
- 1 Landscape 'cosy' seat
  - 2 Imaginative seating elements
  - 3 Sand pit
  - 4 Screen planting to wall
  - 5 Secondary circulation path
  - 6 Feature sensory tree planting
  - 7 Active play (trampolines)
  - 8 Softfall amphitheatre
  - 9 Security gate
  - 10 Sensory driven play
  - 11 Terraces and battering to building edge
  - 12 Water play area
  - 13 Extent of solid canopy
  - 14 Ramped egress route
  - 15 Egress route

Pre-School Courtyard - Plan



Facade planting to architecture



Feature tree planting

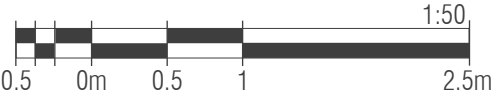


Low mass planting



Palisade partition fencing

Pre-School Courtyard - Section



O C U L U S  
level 1, 5 wilson street / post box 307 newtown nsw 2042  
p 02.9557.5533. f 02.9519.8323 mail@oculus.com.au



Date	Rev. Description	Rev
02/10/20	Issue for SSDA	A
11/11/20	Issue for SSDA	B

RIDBC Centre of Excellence

Pre-school Courtyard

scale:  
job no.:  
date:

As Shown  
S20-022  
02/10/20

drawn by:  
checked:

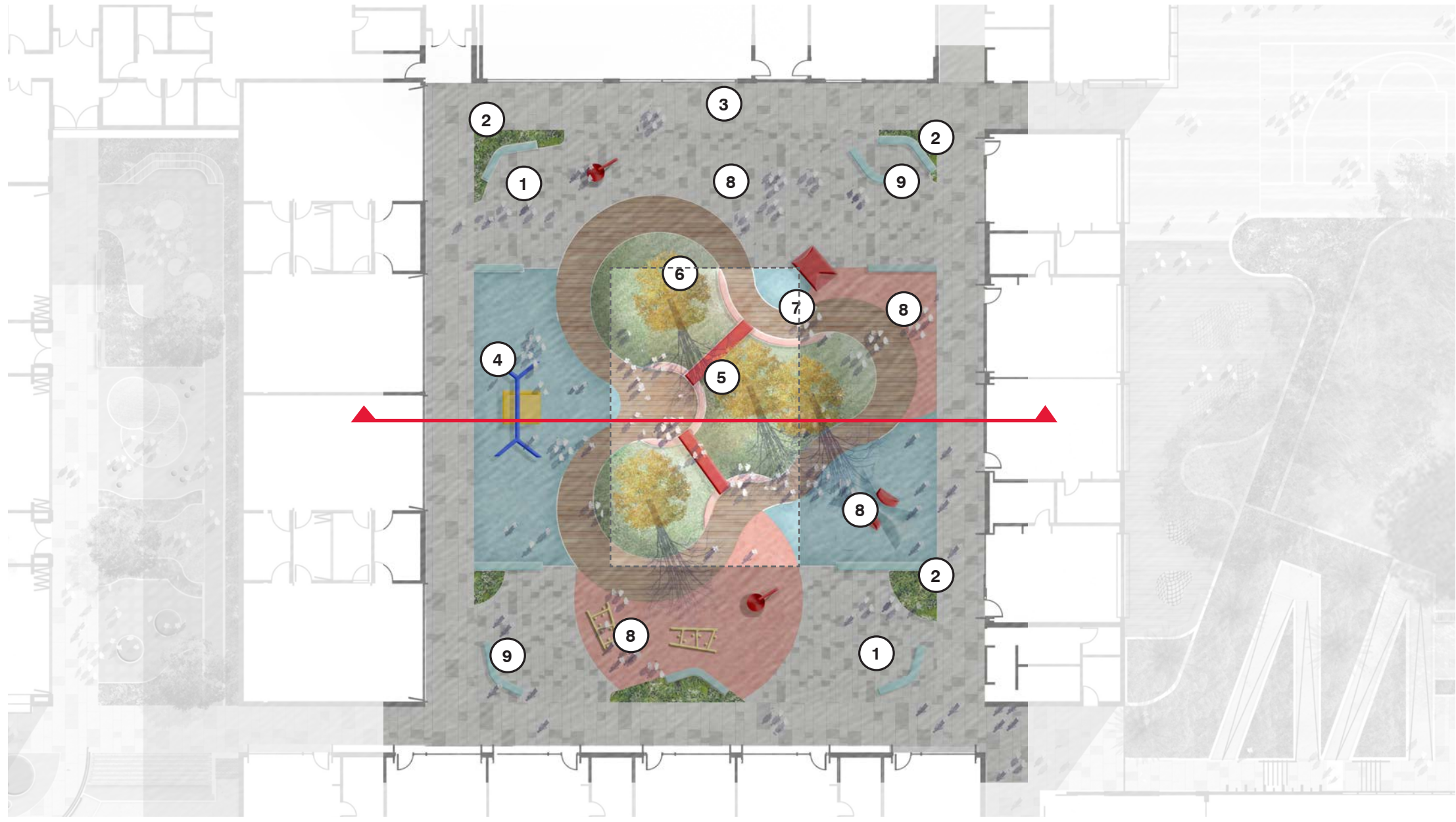
CM  
KS



L - 103

A





- LEGEND**
- 1 Passive breakout spaces
  - 2 Lush shade tolerant planting
  - 3 Concrete unit paving
  - 4 Liberty swing
  - 5 Artificial turf mounds and tunnels
  - 6 Feature trees in mounds
  - 7 Extent of canopy
  - 8 Sensory play
  - 9 Retreat breakout spaces

Primary School COLA - Section



All abilities play equipment and sensory play



Feature tree planting to roof opening



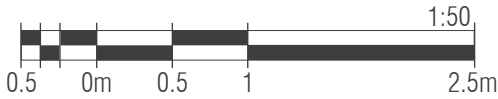
Softfall and artificial turf mound and tunnels



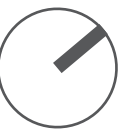
Passive breakout spaces



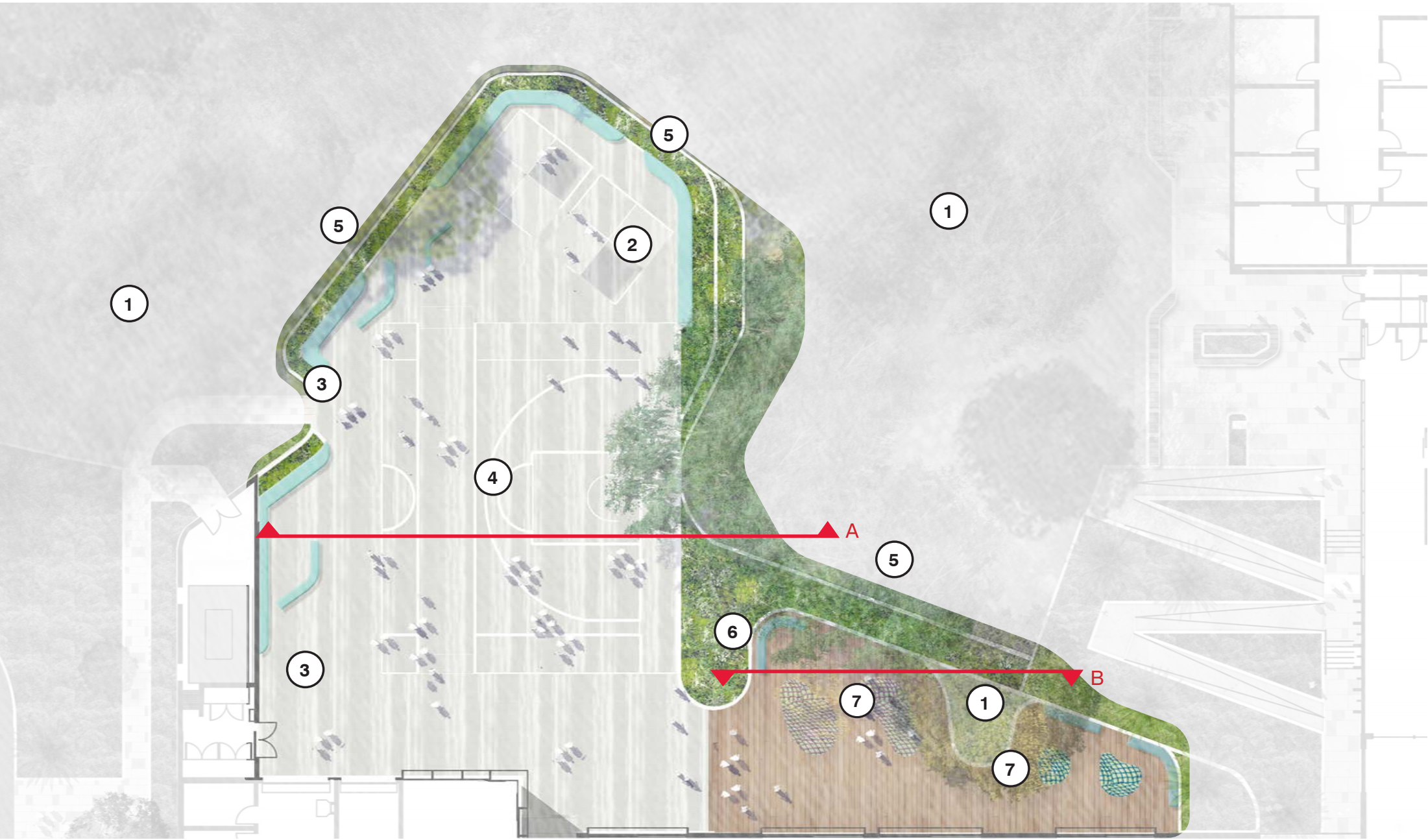
Primary School COLA - Section



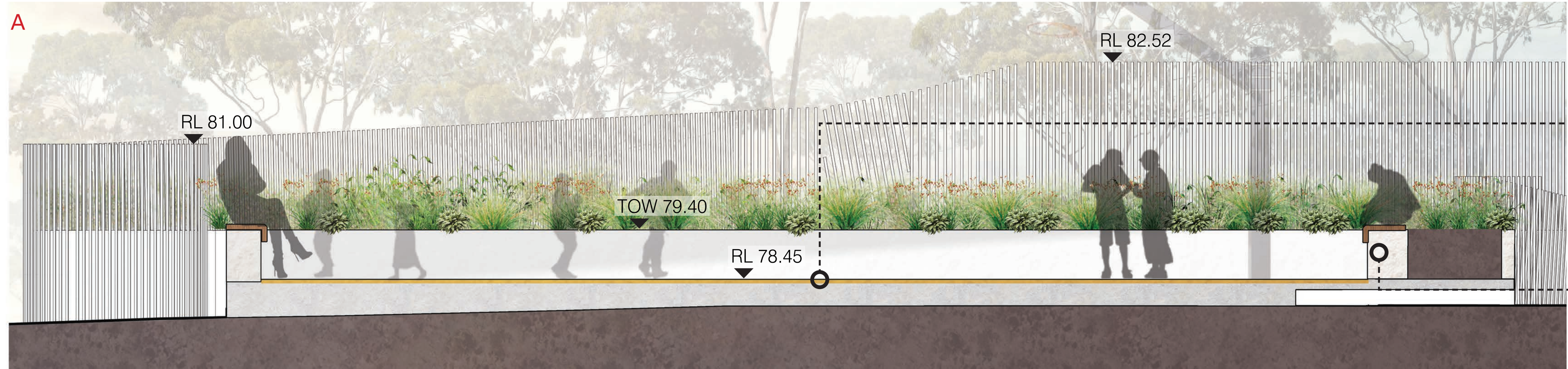
Date	Rev. Description	Rev
02/10/20	Issue for SSDA	A
11/11/20	Issue for SSDA	B



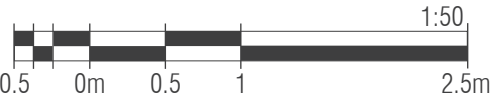




- LEGEND**
- ① Existing trees to remain
  - ② Handball courts
  - ③ Seating
  - ④ Multi-purpose half court
  - ⑤ Security fence
  - ⑥ Low mass planting
  - ⑦ Accessible netting



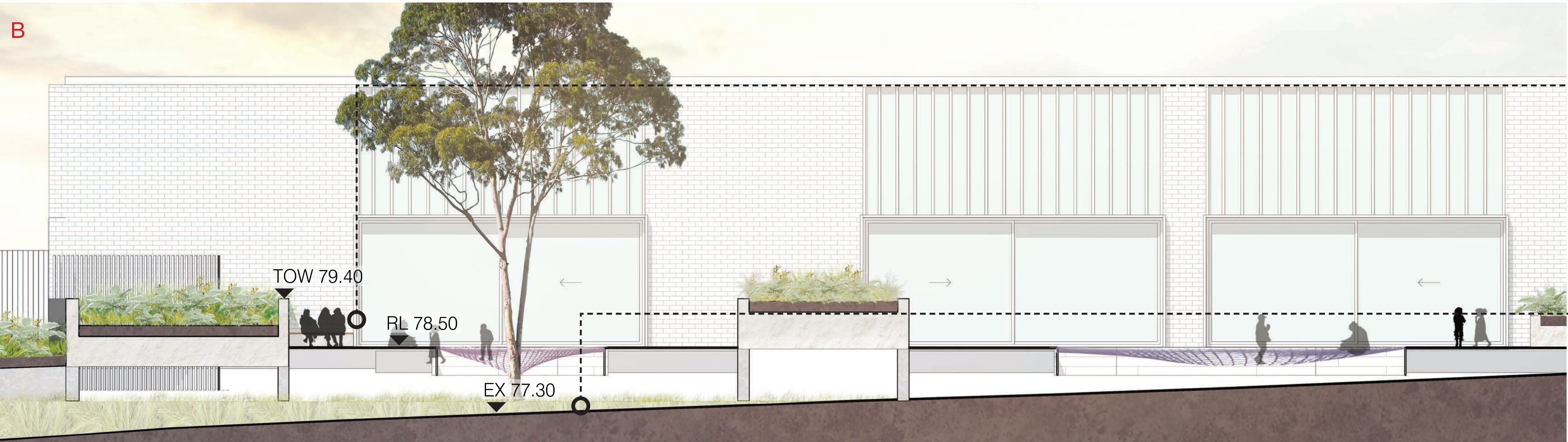
Outdoor Play Area - Section A



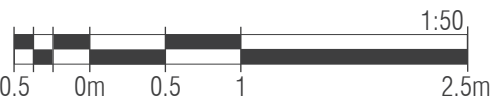
Multi-purpose court



Seating and mass planting



Outdoor Play Area - Section B



Outdoor learning seating



Accessible netting to existing tree

**O C U L U S**  
level 1, 5 wilson street / post box 307 newtown nsw 2042  
p 02.9557.5533. f 02.9519.8323 mail@oculus.com.au

**WMK**

 **Royal Institute for Deaf and Blind Children**

Date	Rev. Description	Rev
02/10/20	Issue for SSDA	A
11/11/20	Issue for SSDA	B

**RIDBC Centre of Excellence**

**Outdoor Play Area**

scale:  
job no.:  
date:

As Shown  
S20-022  
02/10/20

drawn by:  
checked:

CM  
KS



**L - 105**

**A**





LEGEND

- ① Staff Terrace
- ② Cafe Terrace
- ③ Entry Plaza
- ④ Gymnasium Road Frontage
- ⑤ Courtyard
- ⑥ West Precinct Road

O C U L U S  
level 1, 5 wilson street / post box 307 newtown nsw 2042  
p 02.9557.5533. f 02.9519.8323 mail@oculus.com.au



Date	Rev. Description	Rev
02/10/20	Issue for SSDA	A
11/11/20	Issue for SSDA	B

RIDBC Centre of Excellence

Consulting Services Building  
Key Plan - Upper Ground

scale:  
job no.:  
date:

As Shown  
S20-022  
02/10/20

drawn by:  
checked:

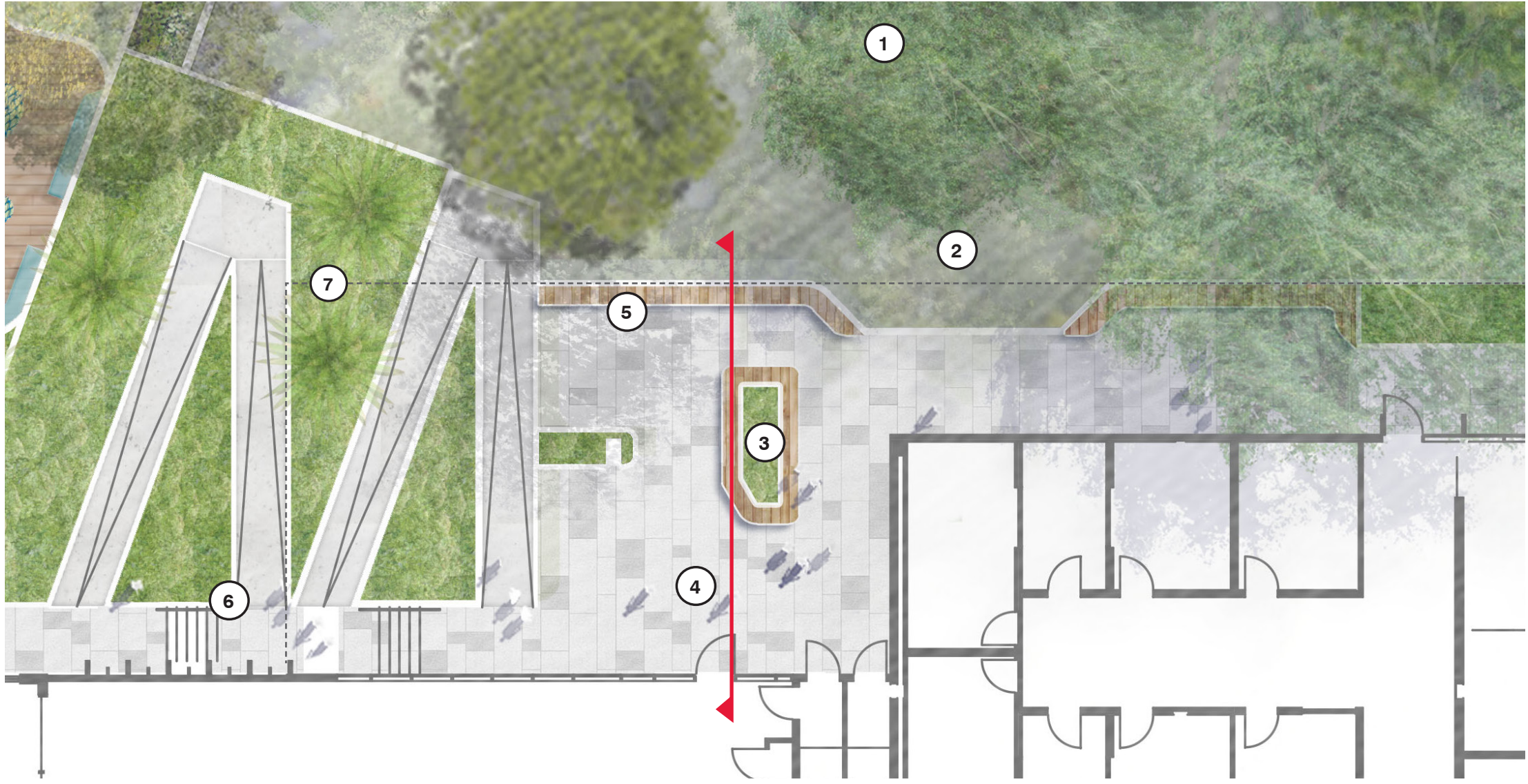
CM  
KS



L - 200

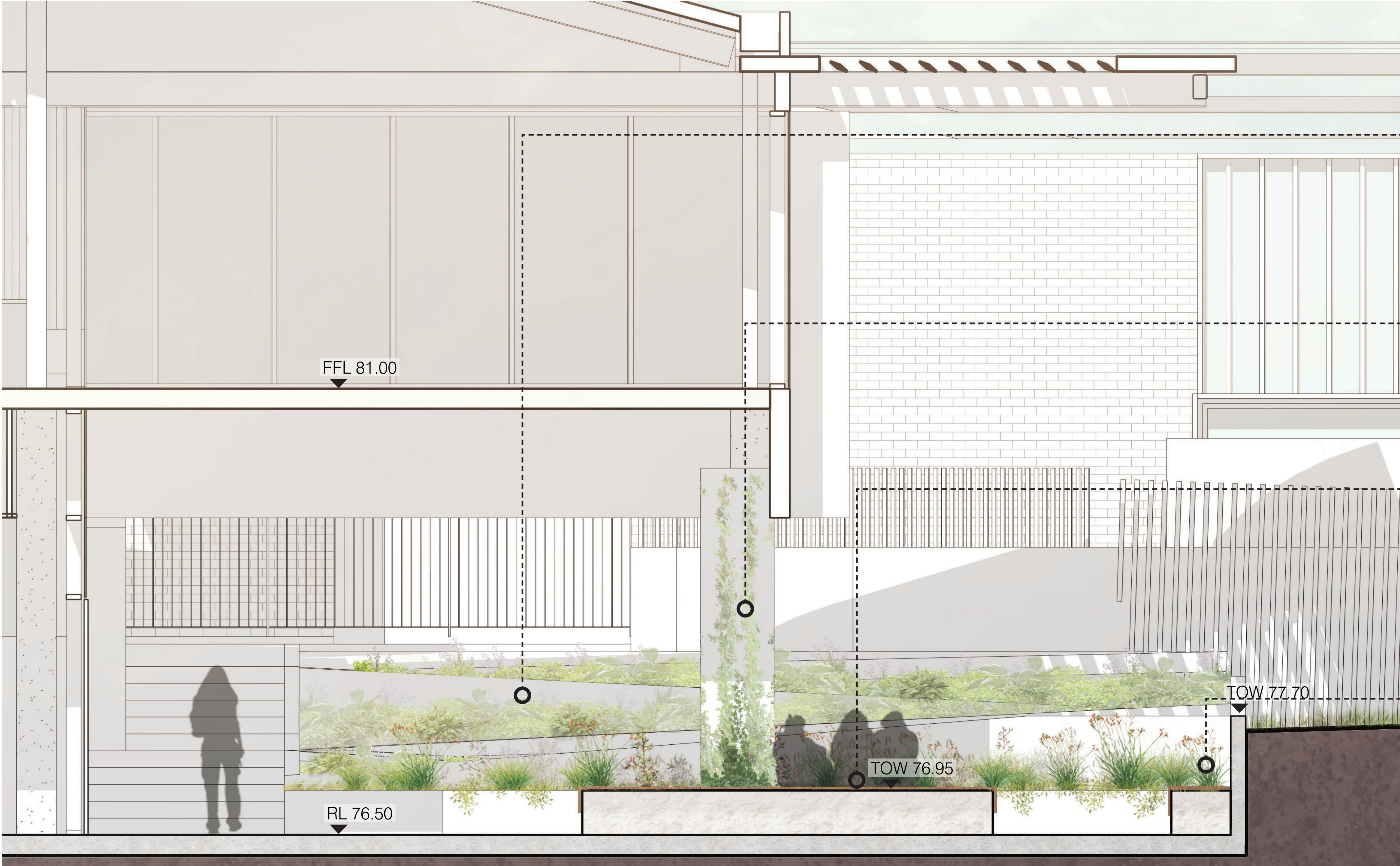
A





- LEGEND**
- ① Existing Trees to Remain
  - ② Turf to Existing Trees
  - ③ Integrated Seat and Planter
  - ④ Concrete Unit Pavers
  - ⑤ Retaining Wall with Integrated Seating
  - ⑥ Ramp and Stair Access to School
  - ⑦ Extent of Canopy Above

Staff Terrace - Plan



Staff Terrace - Section



Landscaped ramp and stair



Climbing plants to building columns



Planter with integrated timber seating



Retaining wall with integrated timber seating

**O C U L U S**  
level 1, 5 wilson street / post box 307 newtown nsw 2042  
p 02.9557.5533. f 02.9519.8323 mail@oculus.com.au

**W MK**

 **Royal Institute for Deaf and Blind Children**

Date	Rev. Description	Rev
02/10/20	Issue for SSDA	A
11/11/20	Issue for SSDA	B

**RIDBC Centre of Excellence**

**Saff Terrace**

scale:  
job no.:  
date:

As Shown  
S20-022  
02/10/20

drawn by:  
checked:

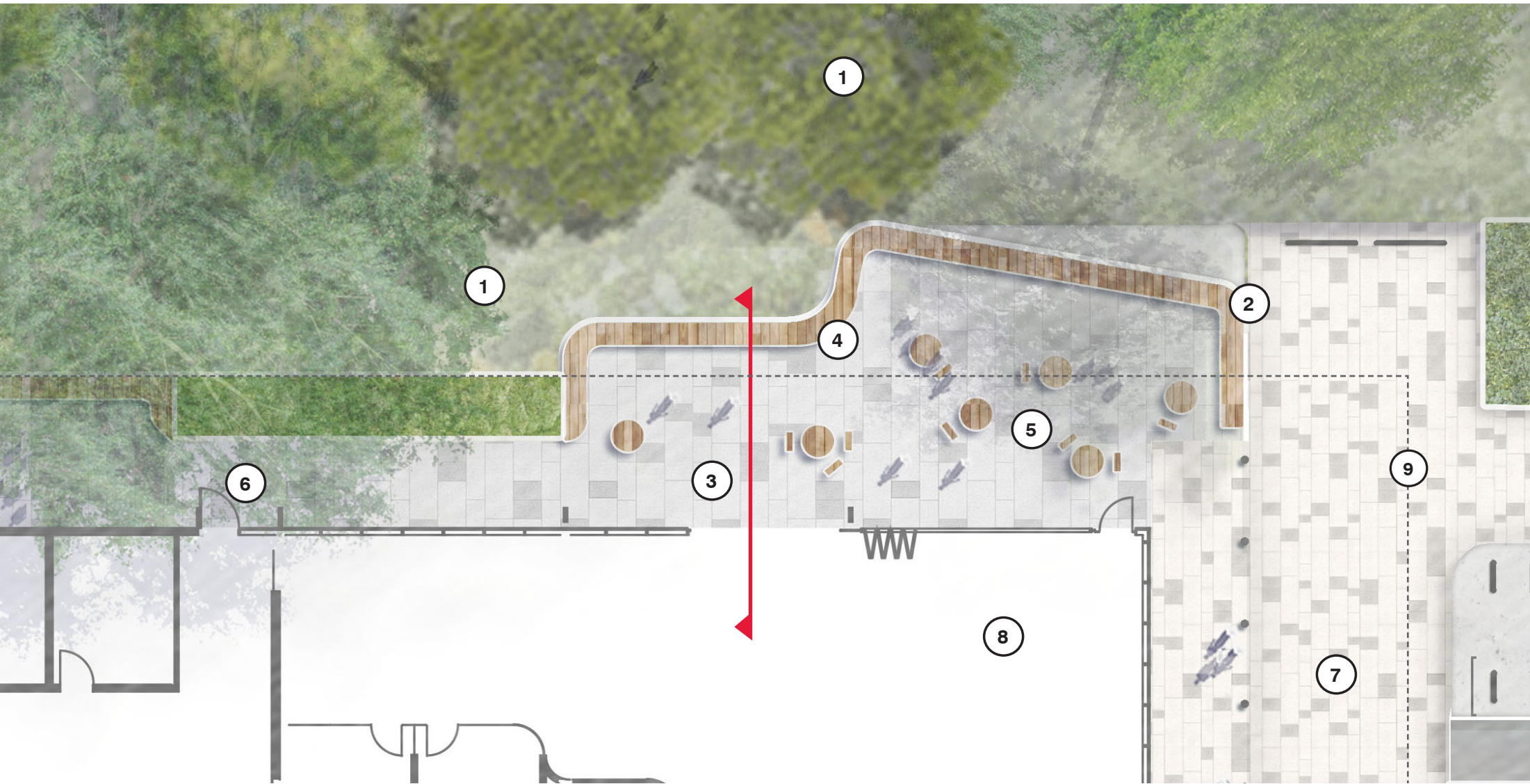
CM  
KS



**L - 201**

**A**





- LEGEND**
- ① Existing Trees to Remain
  - ② Mass Planting
  - ③ Concrete Unit Pavers
  - ④ Retaining Wall with Integrated Seating
  - ⑤ Moveable Cafe Furniture
  - ⑥ Connection to Staff Terrace
  - ⑦ CSB Entry Plaza
  - ⑧ Cafe
  - ⑨ Extent of Canopy Above

Staff Terrace - Plan



Cafe Terrace - Section



Existing Trees to remain



Moveable cafe furniture setting



Retaining wall with integrated timber seating



Mass planting and turf to existing landscape

O C U L U S  
level 1, 5 wilson street / post box 307 newtown nsw 2042  
p 02.9557.5533. f 02.9519.8323 mail@oculus.com.au

W MK

Royal Institute for  
Deaf and Blind Children

Date	Rev. Description	Rev
02/10/20	Issue for SSDA	A
11/11/20	Issue for SSDA	B

RIDBC Centre of Excellence

Cafe Terrace

scale:  
job no.:  
date:

As Shown  
S20-022  
02/10/20

drawn by:  
checked:

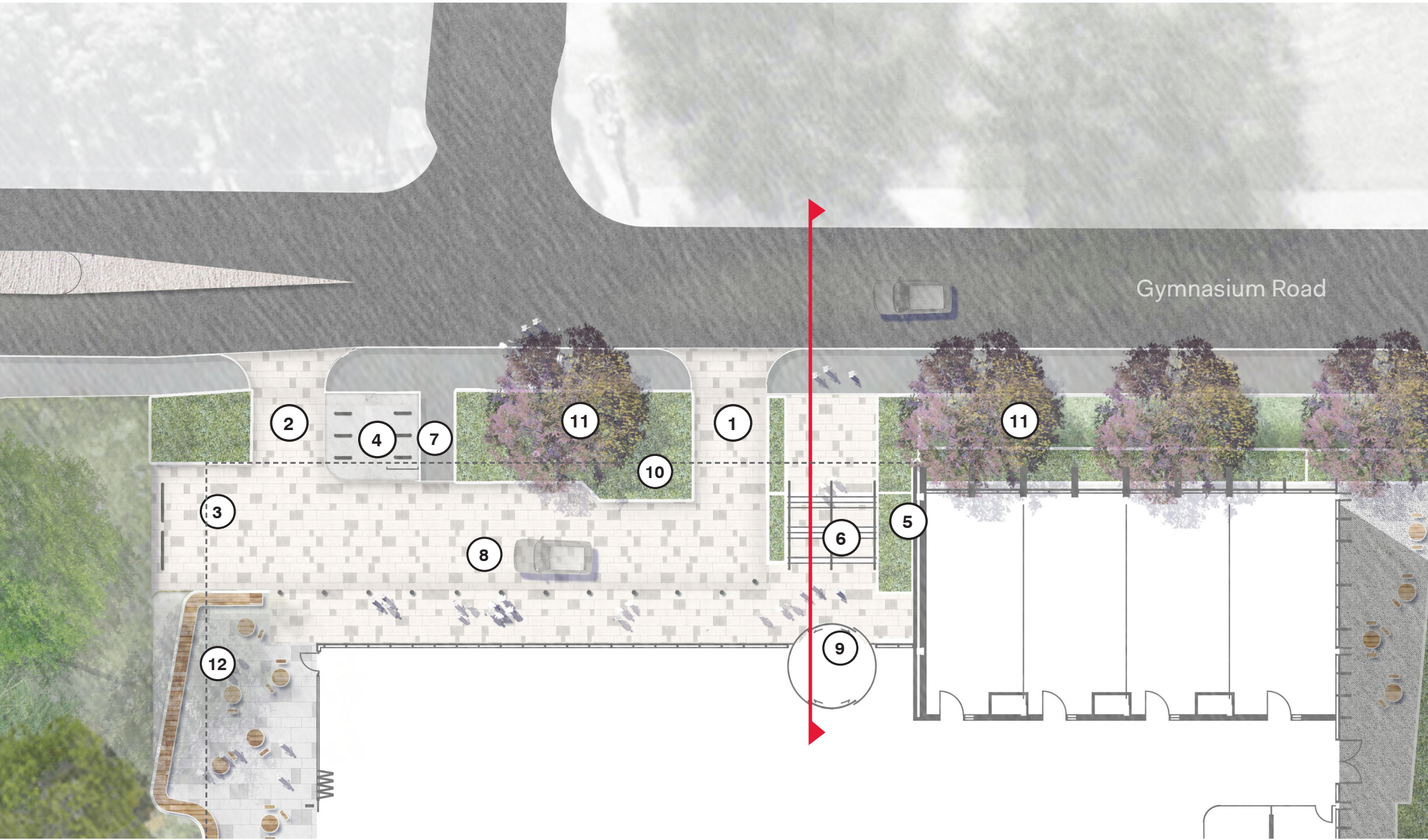
CM  
KS



L - 202

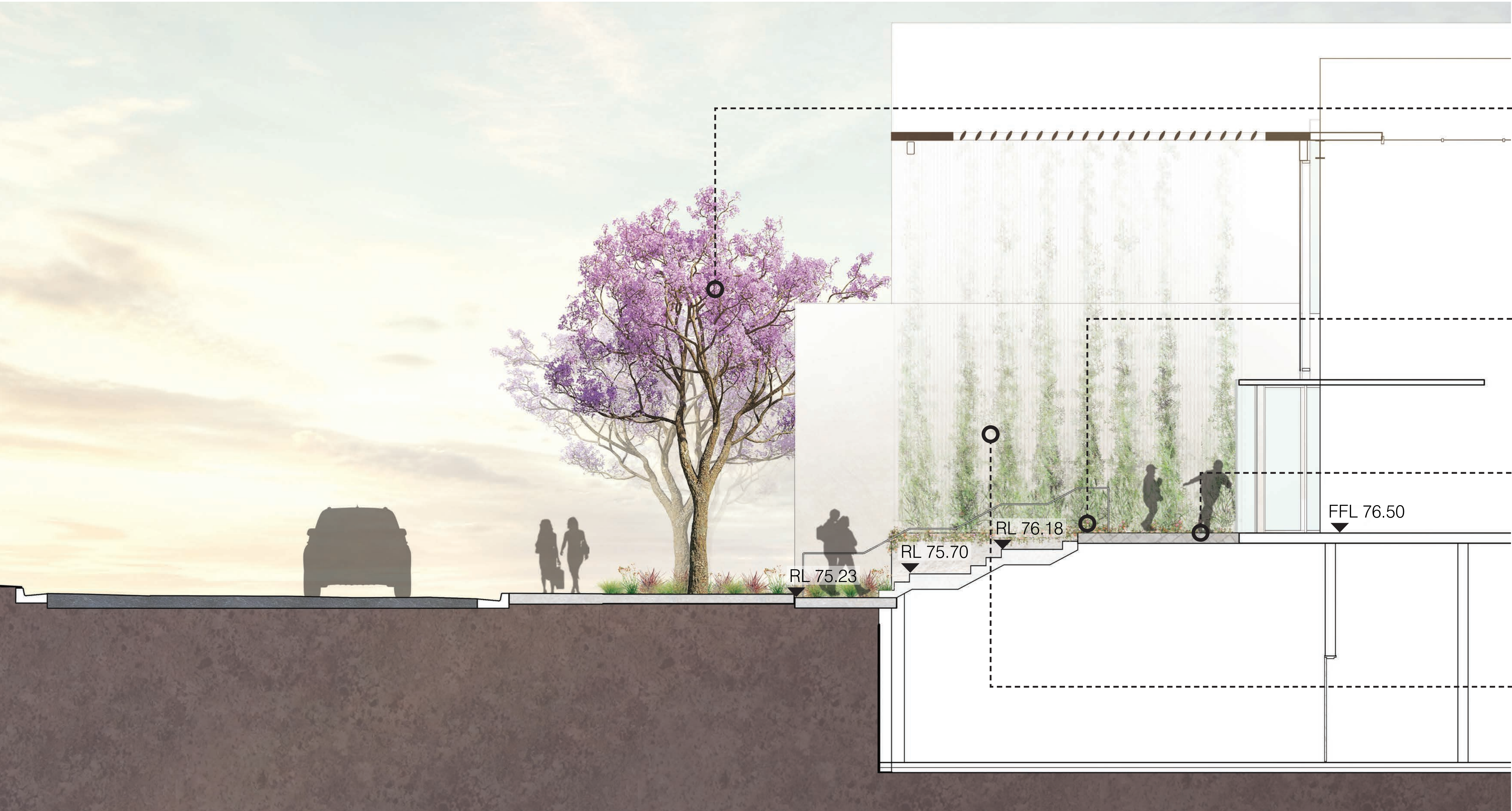
A





- LEGEND**
- ① Vehicle Entry
  - ② Vehicle Exit
  - ③ Short Term Visitor Parking
  - ④ Bike Parking
  - ⑤ Terraced Planters
  - ⑥ Stair Access
  - ⑦ Equitable Access Route
  - ⑧ Shared Area
  - ⑨ Building Entry
  - ⑩ Low Feature Planting
  - ⑪ Colourful Street Tree
  - ⑫ Extend of Canopy Above

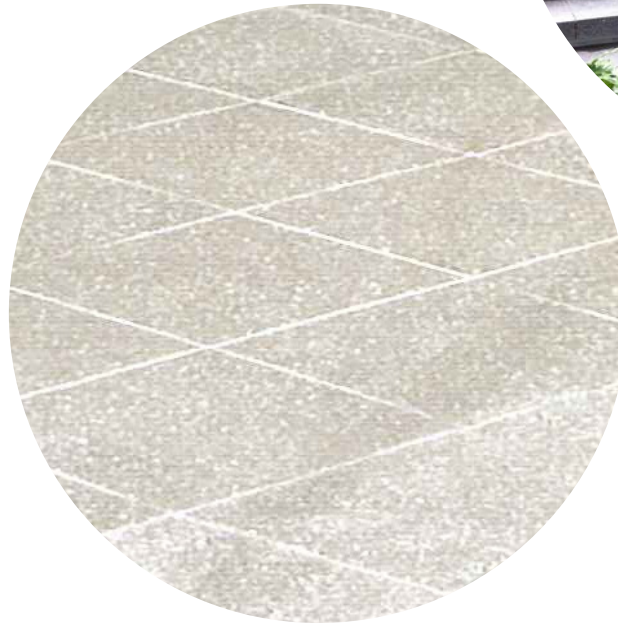
**Consulting Services  
Building Entry - Plan**



Jacaranda mimosifolia  
street tree



Flush mass  
planting to stair

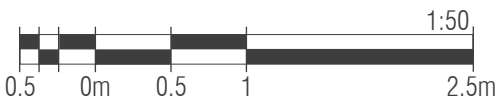


Concrete unit paving



Climbing planting  
to building wall

**Consulting Services Building Entry - Section**



**O C U L U S**  
level 1, 5 wilson street / post box 307 newtown nsw 2042  
p 02.9557.5533. f 02.9519.8323 mail@oculus.com.au



Date	Rev. Description	Rev
02/10/20	Issue for SSDA	A
11/11/20	Issue for SSDA	B

**RIDBC Centre of Excellence**

**Consulting Services Building  
- Entry**

scale:  
job no.:  
date:

As Shown  
S20-022  
02/10/20

drawn by:  
checked:

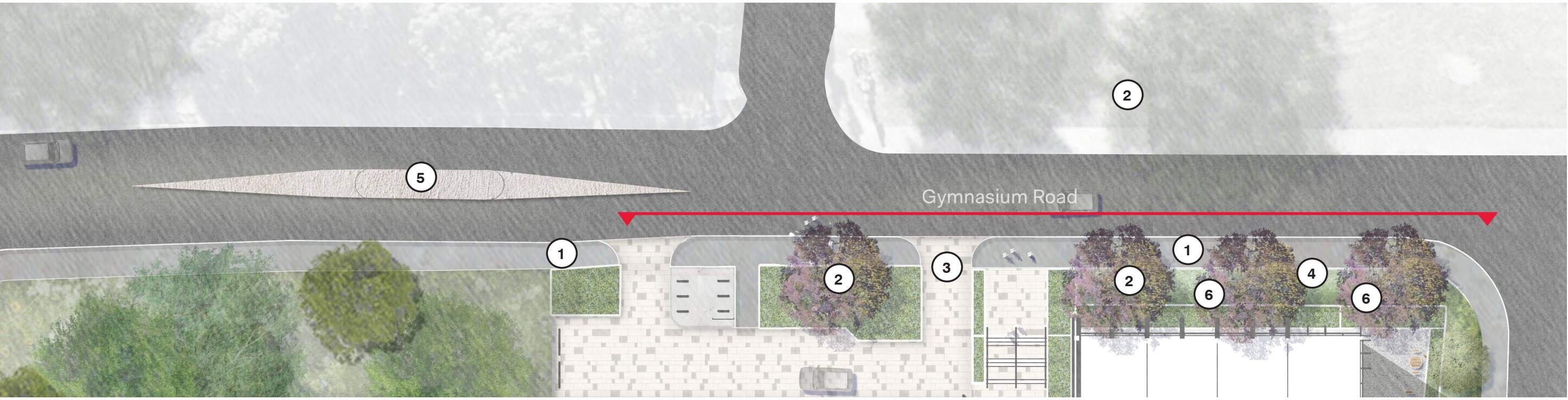
CM  
KS



**L - 203**

**A**



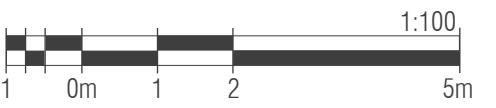


Consulting Services Building Entry - Plan

- LEGEND
- 1 1.8m Wide Footpath to Back of Kerb
  - 2 Colourful Avenue Street Tree Planting
  - 3 Port Cochere Vehicle Entry
  - 4 Turf planting
  - 5 Existing Pedestrian Crossing to Remain
  - 6 Terraced Planting



Consulting Services Building Entry - Section



Layered mass planting terrace

Jacaranda mimosifolia

1.8m wide asphalt pedestrian footpath

Bike parking

Date	Rev. Description	Rev
02/10/20	Issue for SSDA	A
11/11/20	Issue for SSDA	B

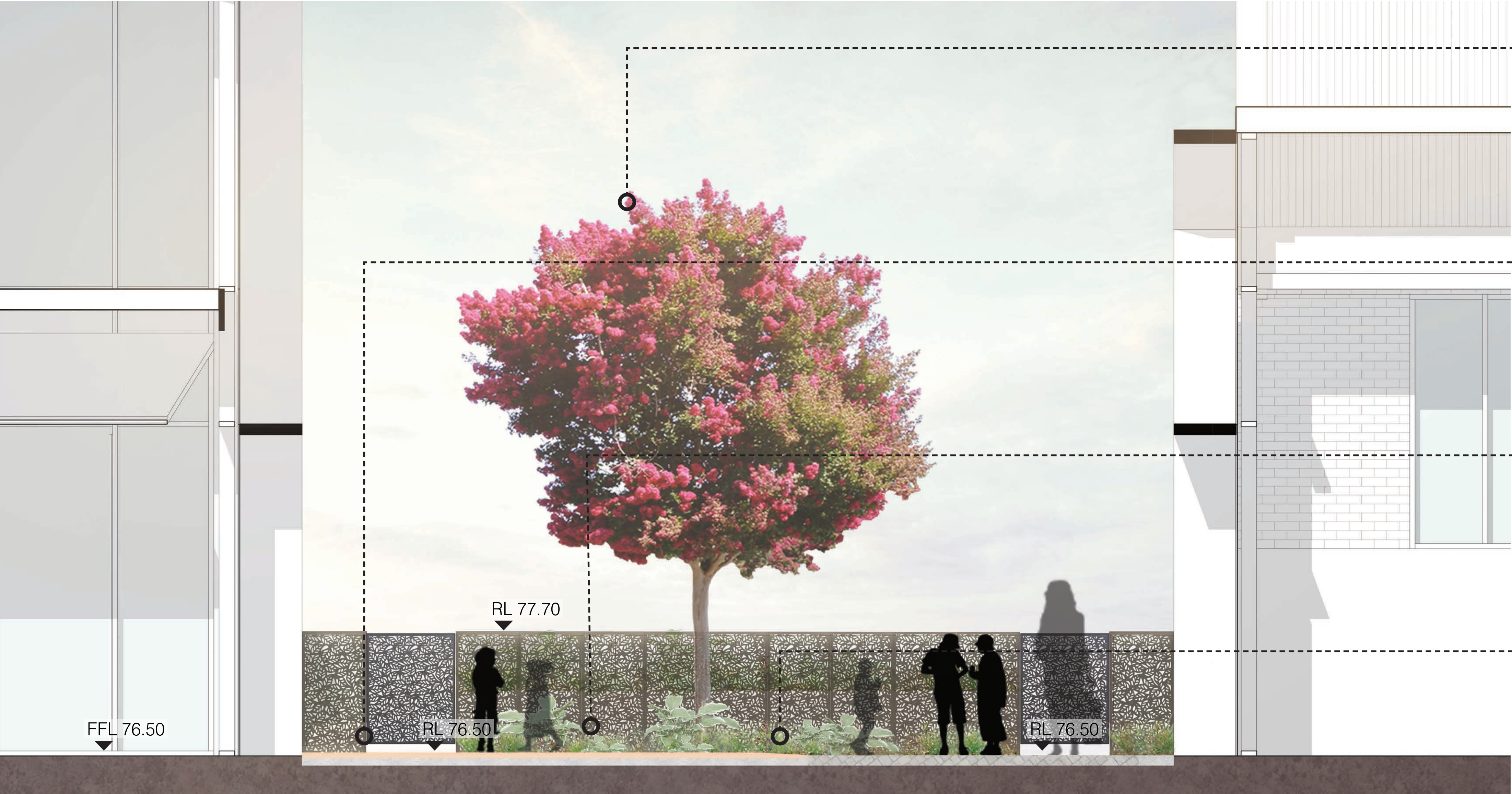






- LEGEND**
- ① Terraced Turf Steps
  - ② Security Fence/Balustrade
  - ③ Gravel Offset from Glazing to Extent of Mullions
  - ④ 500mm Planter (On Structure)
  - ⑤ Bench Seating to Wall
  - ⑥ Moveable Outdoor Furniture Setting
  - ⑦ Concrete Unit Pavers
  - ⑧ Tree in Deep Soil
  - ⑨ Softfall Play / Outdoor Learning Area
  - ⑩ Screen Planting and Fence to Play Area
  - ⑪ Egress Stair

Consulting Services Building Courtyard - Plan



Feature Tree Planting



Outdoor play and learning space

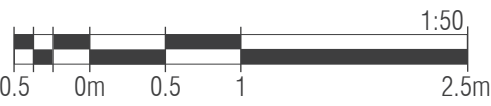


Fence and planting to play space



Low mass planting

Consulting Services Building Courtyard - Section



**O C U L U S**  
level 1, 5 wilson street / post box 307 newtown nsw 2042  
p 02.9557.5533. f 02.9519.8323 mail@oculus.com.au



Date	Rev. Description	Rev
02/10/20	Issue for SSDA	A
11/11/20	Issue for SSDA	B

RIDBC Centre of Excellence

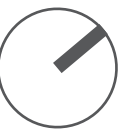
Consulting Services Building  
- Courtyard

scale:  
job no.:  
date:

As Shown  
S20-022  
02/10/20

drawn by:  
checked:

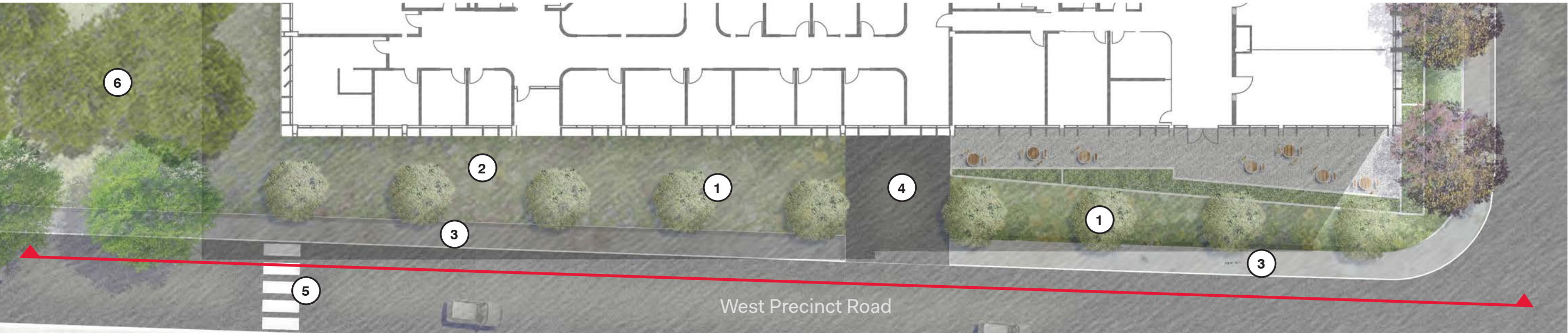
CM  
KS



L - 205

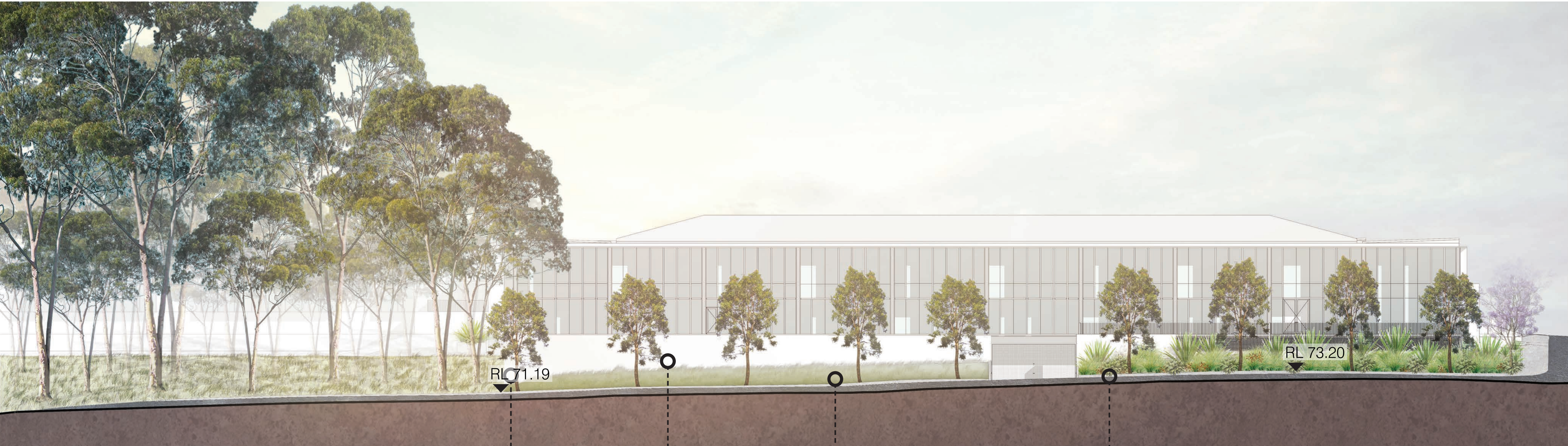
A





- LEGEND
- 1 Native Street Tree
  - 2 Turf Batter to Building
  - 3 1.8m Wide Pedestrian Footpath
  - 4 Vehicle Entry to Basement
  - 5 Retained Pedestrian Crossing
  - 6 Infill Native Tree Planting

West Precinct Road - Plan



West Precinct Road - Section



Flush mass  
planting to stair



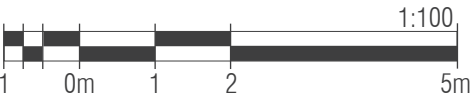
Medium  
sized native  
street trees



Turf mounded to  
base of building



Layered mass  
planting terrace



O C U L U S  
level 1, 5 wilson street / post box 307 newtown nsw 2042  
p 02.9557.5533. f 02.9519.8323 mail@oculus.com.au

W  
MK

Royal Institute for  
Deaf and Blind Children

Date	Rev. Description	Rev
02/10/20	Issue for SSDA	A
11/11/20	Issue for SSDA	B

RIDBC Centre of Excellence

West Precinct Road Frontage

scale:  
job no.:  
date:

As Shown  
S20-022  
02/10/20

drawn by:  
checked:

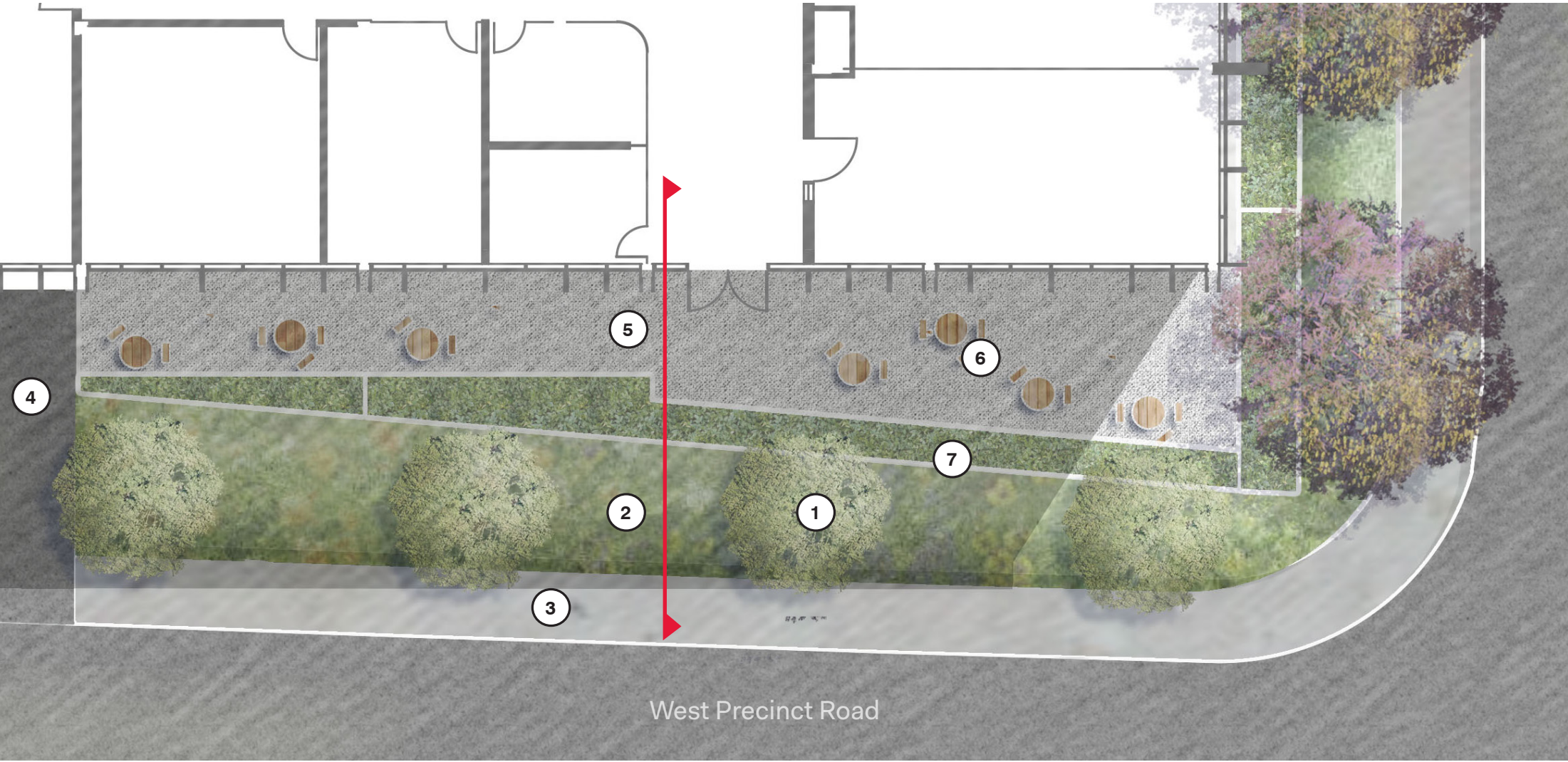
CM  
KS



L - 206

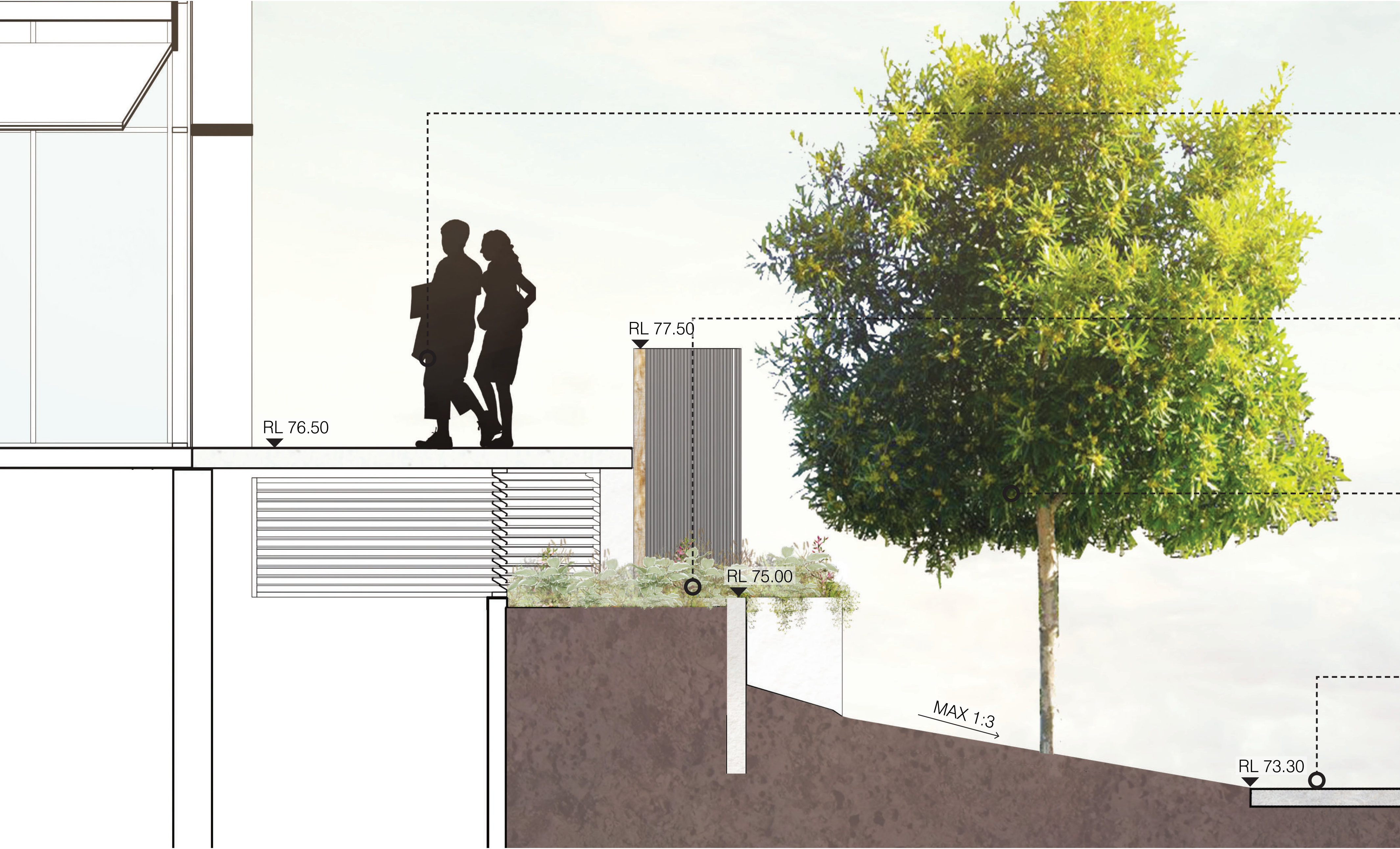
A





Eastern Terrace - Plan

- LEGEND
- 1 Native Street Tree
  - 2 Turf Batter to Building
  - 3 1.8m Wide Pedestrian Footpath
  - 4 Vehicle Entry to Basement
  - 5 Concrete Unit Paving to Terrace
  - 6 Moveable Outdoor Furniture
  - 7 Terraced Planter



Eastern Terrace - Section



Outdoor Terrace Area with Seating



Layered mass planting terrace



Tristaniopsis laurina street tree



1.8m wide pedestrian footpath

Date	Rev. Description	Rev
02/10/20	Issue for SSDA	A
11/11/20	Issue for SSDA	B

