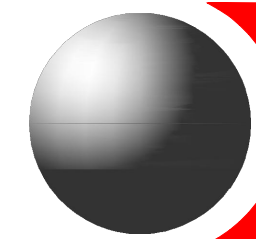


**LOT 8 & 11 DP270328, 21D & 21F SCHOOL DRIVE TOMAGO  
INTERNAL CIVIL WORKS**





## LOCALITY PLAN

### DRAWING SCHEDULE

DWG No.	DRAWING TITLE
C1.1	COVER SHEET
C1.3	SITE PLAN
C2.1	CONCEPT SEDIMENT & EROSION CONTROL PLAN
C2.2	CONCEPT SEDIMENT & EROSION CONTROL DETAILS
C2.3	CONCEPT BULK EARTHWORKS PLAN
C2.4	CONCEPT LONG SECTIONS
C3.1	CONCEPT STORMWATER MANAGEMENT & LEVELS PLAN - SHEET 1
C3.2	CONCEPT STORMWATER MANAGEMENT & LEVELS PLAN - SHEET 2
C3.3	CONCEPT STORMWATER MANAGEMENT & LEVELS PLAN - SHEET 3
C5.1	CONCEPT CIVIL DETAILS - SHEET 1

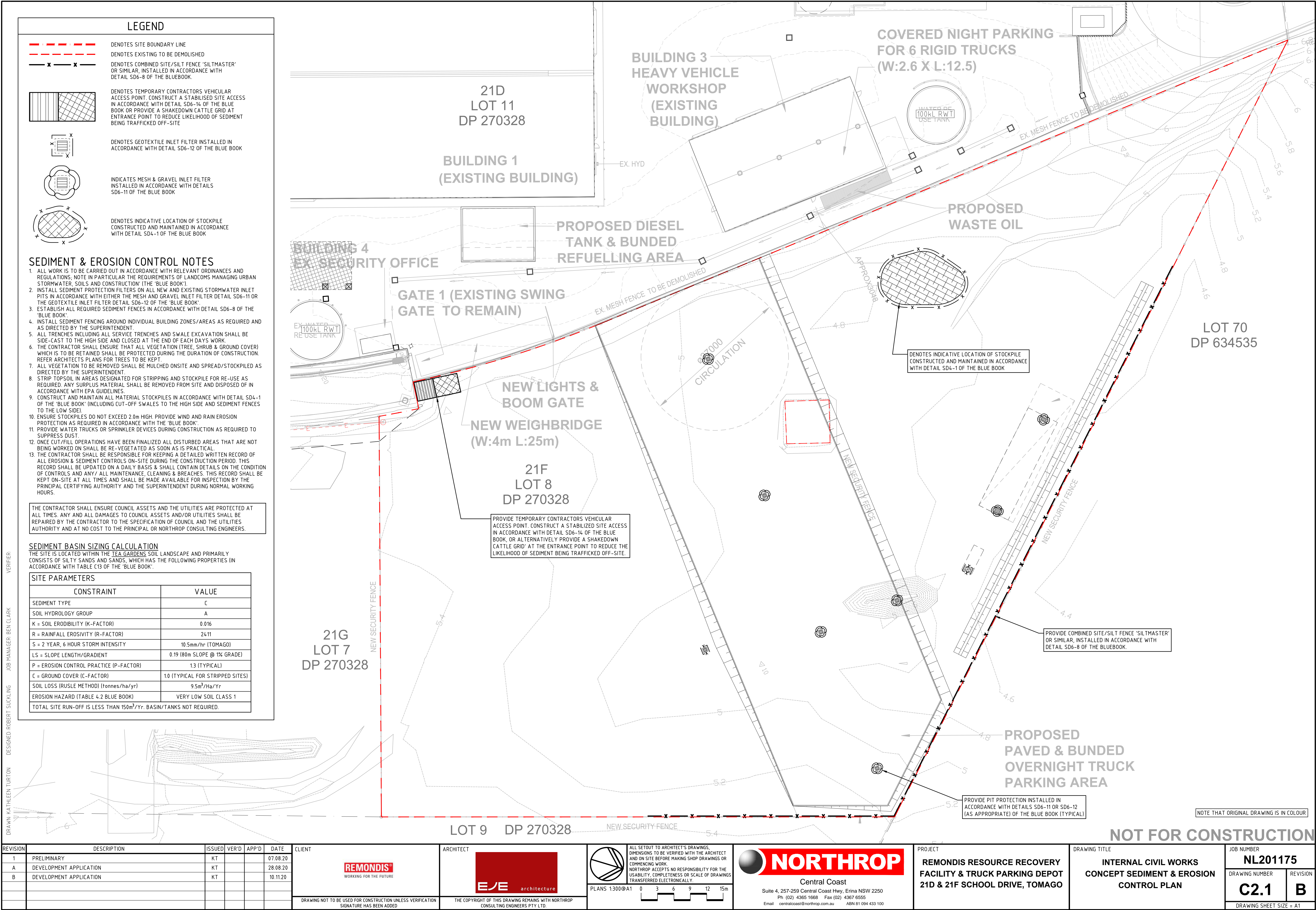
DRAWN: KATHLEEN TURTON      DESIGNED: ROBERT SUCKLING      JOB MANAGER: BEN CLARK      VERIFIER:

REVISION		DESCRIPTION		ISSUED	VER'D	APP'D	DATE	CLIENT	ARCHITECT	ALL SETOUT TO ARCHITECT'S DRAWINGS, DIMENSIONS TO BE VERIFIED WITH THE ARCHITECT AND ON SITE BEFORE MAKING SHOP DRAWINGS OR COMMENCING WORK. NORTHROP ACCEPTS NO RESPONSIBILITY FOR THE USABILITY, COMPLETENESS OR SCALE OF DRAWINGS TRANSFERRED ELECTRONICALLY.		PROJECT		DRAWING TITLE		JOB NUMBER	
1		PRELIMINARY		KT			07.08.20					REMONDIS RESOURCE RECOVERY FACILITY & TRUCK PARKING DEPOT 21D & 21F SCHOOL DRIVE, TOMAGO		INTERNAL CIVIL WORKS COVER SHEET		NL201175	
A		DEVELOPMENT APPLICATION		KT		28.08.20	DRAWING NUMBER					REVISION					
							C1.1					A					
DRAWING NOT TO BE USED FOR CONSTRUCTION UNLESS VERIFICATION									THE COPYRIGHT OF THIS DRAWING REMAINS WITH NORTHROP			DRAWING SHEET SIZE = A1					











SEDIMENT FENCE (SD 6-8)

MESH AND GRAVEL INLET FILTER (SD 6-11)

GEOTEXTILE INLET FILTER (SD 6-12)

STABILISED SITE ACCESS (SD 6-14)

STOCKPILES (SD 4-1)

**NOT FOR CONSTRUCTION**



BULK EARTHWORKS PLAN  
LEGEND

- 24.8 --- DENOTES EXISTING CONTOUR LINES  
--- 24.8 --- DENOTES BULK EARTHWORKS CONTOUR LINES  
✕ 4.29 DENOTES DEPTH OF PROPOSED CUT (-VE) OR FILL (+VE)

BULK EARTHWORKS NOTES

- WHERE NOT NOMINATED ON PLAN, BULK EARTHWORKS LEVELS HAVE BEEN DETERMINED BY LOWERING THE FINISHED SURFACE LEVELS BASED ON THE FOLLOWING THICKNESSES AND ALLOWANCES  
- TRAFFICABLE CONCRETE PAVEMENT 300mm  
- LANDSCAPE & MISC. AREAS 150mm
- THE EXISTING GROUND SURFACE WAS LOWERED BY 150mm UNIFORMLY TO ACCOUNT FOR THE REMOVAL OF VEGETATION, AND TOP SOILS  
- THIS VOLUME IS ESTIMATED (BASED ON THE DEVELOPMENT AREA OF 3790m<sup>2</sup>) TO BE APPROXIMATELY 568m<sup>3</sup> (TOPSOIL - CUT).
- BULKING FACTORS OF 1.0 WAS USED FOR BOTH CUT AND FILL MATERIAL.
- THE APPROXIMATE SITE EARTHWORKS VOLUMES BASED ON THE NOTED PAVEMENT THICKNESSES ARE OUTLINED BELOW:  
- CUT: 321 m<sup>3</sup>  
- FILL: 553 m<sup>3</sup>  
- NET: 232m<sup>3</sup> (FILL) + 568m<sup>3</sup> (TOPSOIL - CUT)
- THE ABOVE VOLUMES ARE TO BE ASSESS NOTING THE FOLLOWING:  
- NO ALLOWANCE HAS BEEN MADE FOR THE REMOVAL OR OVER EXCAVATION OF UNSUITABLE OR CONTAMINATED MATERIAL.  
- NO ALLOWANCE HAS BEEN MADE FOR DETAILED EXCAVATIONS SUCH AS, SERVICES TRENCHING, SEDIMENT BASIN ETC.  
- NO ALLOWANCE HAS BEEN MADE FOR TEMPORARY CONSTRUCTION PLATFORMS.
- THIS PLAN HAS BEEN PREPARED FOR INFORMATION PURPOSES ONLY AND IS INDICATIVE IN NATURE. THE EARTHWORKS CONTRACTOR IS TO VERIFY ALL LEVELS AND QUANTITIES AND PERFORM THEIR OWN BULK EARTHWORKS ASSESSMENT.

Surface Analysis: Elevation Ranges				
Number	Color	Minimum Elevation (m)	Maximum Elevation (m)	Volume (m3)
1	■	-2.000	-1.500	7
2	■	-1.500	-1.000	74
3	■	-1.000	-0.500	94
4	■	-0.500	0.000	146
5	■	0.000	0.500	552
6	■	0.500	1.000	2



DRAWN: KATHLEEN TURTON  
DESIGNED: ROBERT SUCKLING  
JOB MANAGER: BEN CLARK  
VERIFIER:

REVISION	DESCRIPTION	ISSUED	VER'D	APP'D	DATE
A	DEVELOPMENT APPLICATION	RS			28.08.20

CLIENT

**REMUNDIS**  
WORKING FOR THE FUTURE

DRAWING NOT TO BE USED FOR CONSTRUCTION UNLESS VERIFICATION SIGNATURE HAS BEEN ADDED

ARCHITECT

**EJE** architecture

THE COPYRIGHT OF THIS DRAWING REMAINS WITH NORTHROP CONSULTING ENGINEERS PTY LTD.

ALL SETOUT TO ARCHITECT'S DRAWINGS, DIMENSIONS TO BE VERIFIED WITH THE ARCHITECT AND ON SITE BEFORE MAKING SHOP DRAWINGS OR COMMENCING WORK. NORTHROP ACCEPTS NO RESPONSIBILITY FOR THE USABILITY, COMPLETENESS OR SCALE OF DRAWINGS TRANSFERRED ELECTRONICALLY.

PLANS 1:300@A1

0 3 6 9 12 15m

**NORTHROP**

Central Coast

Suite 4, 257-259 Central Coast Hwy, Erina NSW 2250  
Ph (02) 4365 1668 Fax (02) 4367 6555  
Email centralcoast@northrop.com.au ABN 81 094 433 100

PROJECT

**REMUNDIS RESOURCE RECOVERY FACILITY & TRUCK PARKING DEPOT**  
21D & 21F SCHOOL DRIVE, TOMAGO

DRAWING TITLE

**INTERNAL CIVIL WORKS**  
CONCEPT BULK EARTHWORKS PLAN

JOB NUMBER

**NL201175**

DRAWING NUMBER

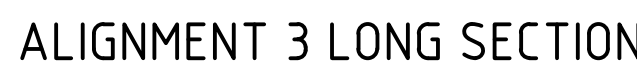
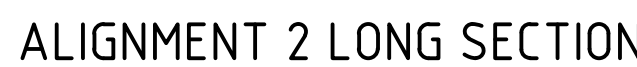
**C2.3**

REVISION

**A**




DRAWING SHEET SIZE = A1



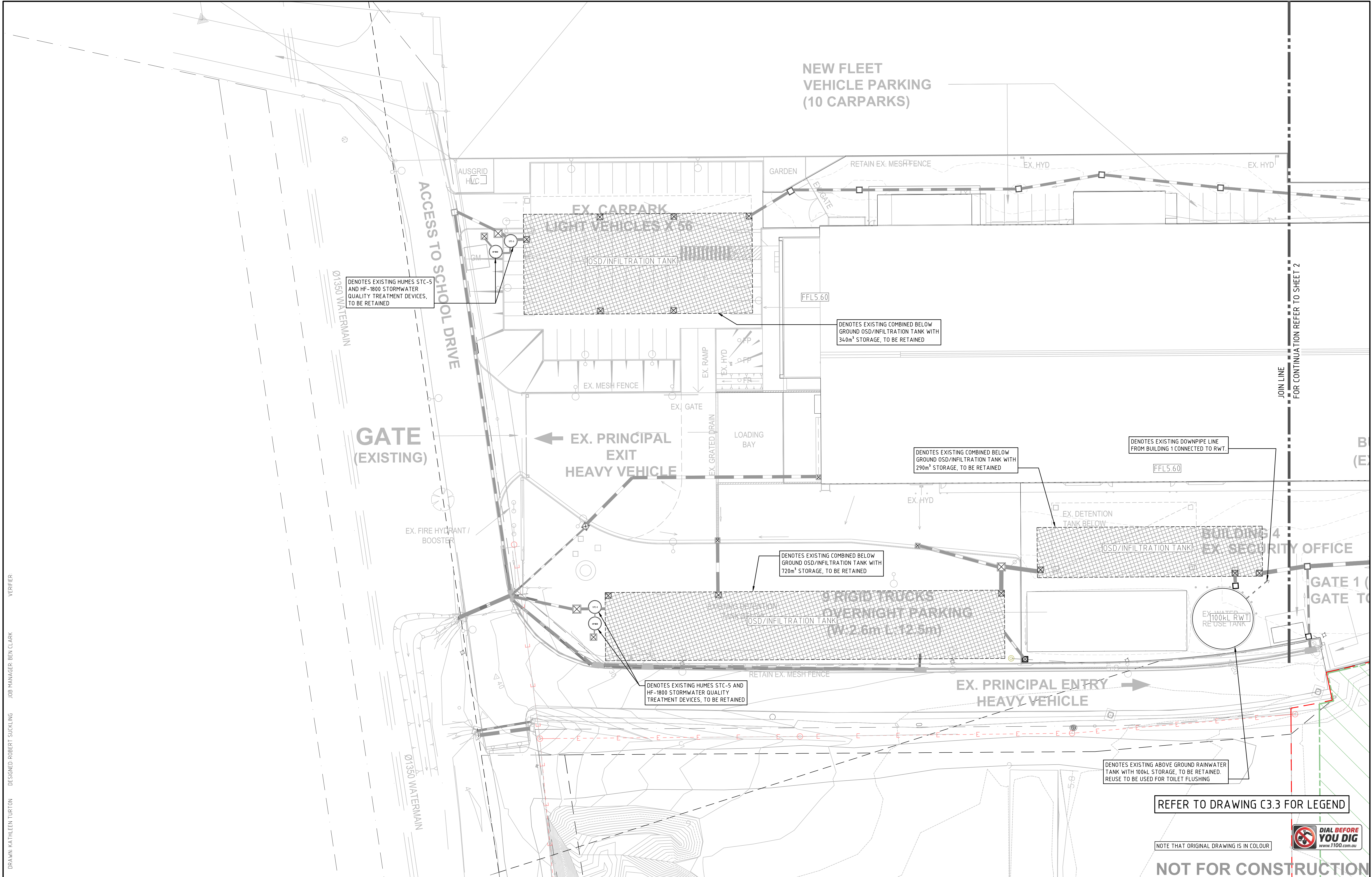





**DIAL BEFORE  
YOU DIG**  
[www.1100.com.au](http://www.1100.com.au)

**NOT FOR CONSTRUCTION**

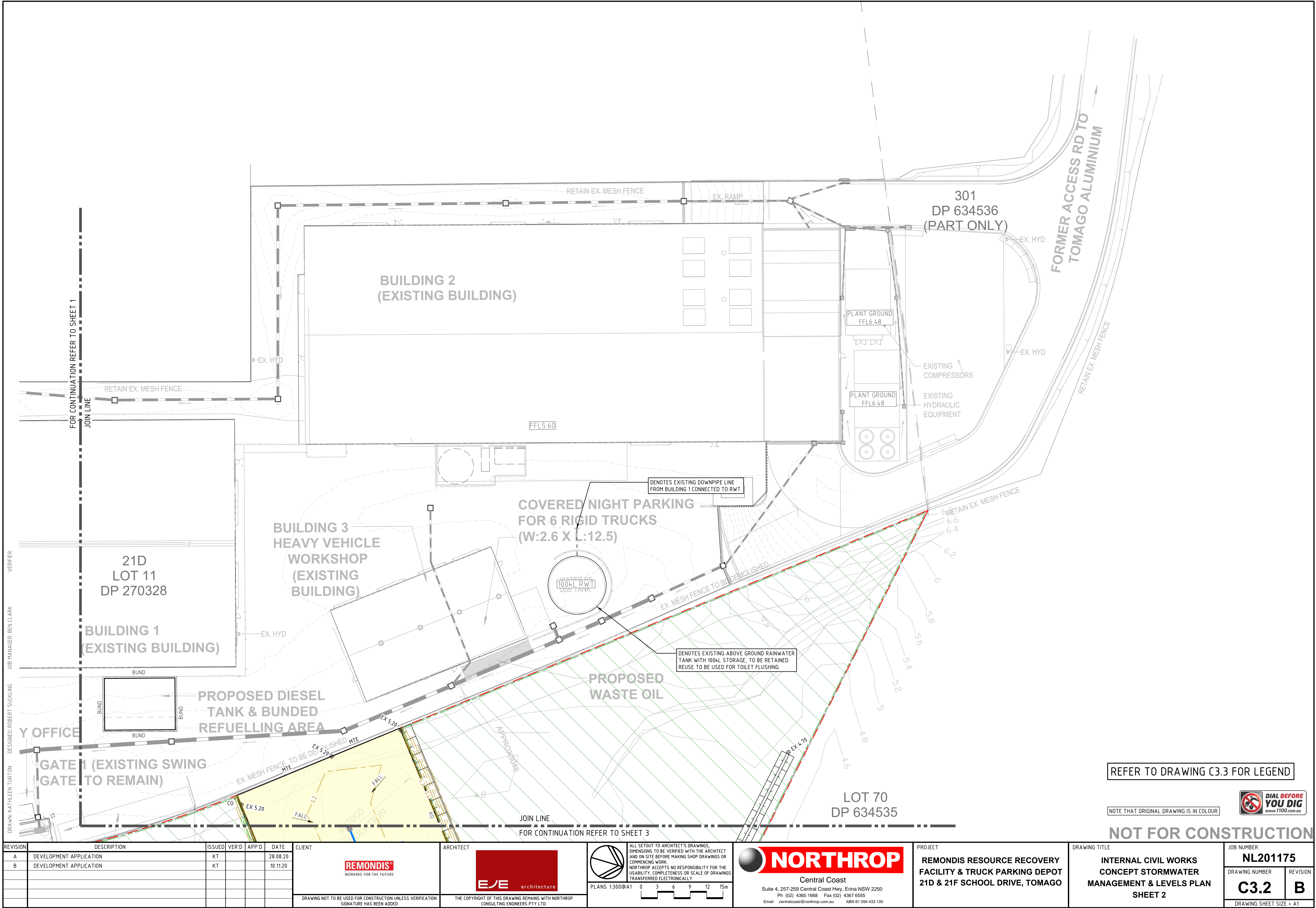
REVISION	DESCRIPTION	ISSUED	VER'D	APP'D	DATE	CLIENT	ARCHITECT		ALL SETOUT TO ARCHITECT'S DRAWINGS. DIMENSIONS TO BE VERIFIED WITH THE ARCHITECT AND ON SITE BEFORE MAKING SHOP DRAWINGS OR COMMENCING WORK. NORTHROP ACCEPTS NO RESPONSIBILITY FOR THE USABILITY, COMPLETENESS OR SCALE OF DRAWINGS TRANSFERRED ELECTRONICALLY.	PROJECT	DRAWING TITLE	JOB NUMBER	
A	DEVELOPMENT APPLICATION	RS			28.08.20					 <div>Central Coast Suite 4, 257-259 Central Coast Hwy, Erina NSW 2250 Ph (02) 4365 1668 Fax (02) 4367 6555 Email centralcoast@northrop.com.au ABN 81 094 433 100</div>	REMONDIS RESOURCE RECOVERY FACILITY & TRUCK PARKING DEPOT 21D & 21F SCHOOL DRIVE, TOMAGO	INTERNAL CIVIL WORKS CONCEPT LONG SECTIONS	NL201175
						DRAWING NOT TO BE USED FOR CONSTRUCTION UNLESS VERIFICATION SIGNATURE HAS BEEN ADDED	THE COPYRIGHT OF THIS DRAWING REMAINS WITH NORTHROP CONSULTING ENGINEERS PTY LTD.					DRAWING NUMBER <b>C2.4</b>	REVISION <b>A</b>
													DRAWING SHEET SIZE = A1





REVISION	DESCRIPTION	ISSUED	VER'D	APP'D	DATE	CLIENT	ARCHITECT		PROJECT	DRAWING TITLE	JOB NUMBER
1	PRELIMINARY	KT			07.08.20	 REMONDIS WORKING FOR THE FUTURE	 EJE architecture	 <b>NORTHROP</b> Central Coast Suite 4, 257-259 Central Coast Hwy, Erina NSW 2250 Ph (02) 4365 1668 Fax (02) 4367 6555 Email centralcoast@northrop.com.au ABN 81 094 433 100	REMONDIS RESOURCE RECOVERY FACILITY & TRUCK PARKING DEPOT 21D & 21F SCHOOL DRIVE, TOMAGO	INTERNAL CIVIL WORKS CONCEPT STORMWATER MANAGEMENT & LEVELS PLAN SHEET 1	NL201175
A	DEVELOPMENT APPLICATION	KT		28.08.20	DRAWING NUMBER						REVISION
B	DEVELOPMENT APPLICATION	KT		10.11.20	C3.1						B
DRAWING NOT TO BE USED FOR CONSTRUCTION UNLESS VERIFICATION SIGNATURE HAS BEEN ADDED											THE COPYRIGHT OF THIS DRAWING REMAINS WITH NORTHROP CONSULTING ENGINEERS PTY LTD.





REFER TO DRAWING C3.3 FOR LEGEND

NOTE THAT ORIGINAL DRAWING IS IN COLOUR



NOT FOR CONSTRUCTION

REVISION	DESCRIPTION	ISSUED	VER'D	APP'D	DATE
A	DEVELOPMENT APPLICATION	KT			28.08.20
B	DEVELOPMENT APPLICATION	KT			10.11.20




WORKING FOR THE FUTURE



architecture

DRAWING NOT TO BE USED FOR CONSTRUCTION UNLESS VERIFICATION SIGNATURE HAS BEEN ADDED


ARCHITECT




Central Coast

Suite 4, 257-259 Central Coast Hwy, Erina NSW 2250  
Ph (02) 4365 1668 Fax (02) 4367 6556  
Email centralcoast@northrop.com.au ABN 81 094 433 100

PLANS 1:300@A1





Central Coast

Suite 4, 257-259 Central Coast Hwy, Erina NSW 2250  
Ph (02) 4365 1668 Fax (02) 4367 6556  
Email centralcoast@northrop.com.au ABN 81 094 433 100

PROJECT

REMONDIS RESOURCE RECOVERY  
FACILITY & TRUCK PARKING DEPOT  
21D & 21F SCHOOL DRIVE, TOMAGO

DRAWING TITLE

INTERNAL CIVIL WORKS  
CONCEPT STORMWATER  
MANAGEMENT & LEVELS PLAN  
SHEET 2

JOB NUMBER

NL201175

DRAWING NUMBER


C3.2

REVISION

B

DRAWING SHEET SIZE = A1

ARCHITECT



Central Coast

Suite 4, 257-259 Central Coast Hwy, Erina NSW 2250  
Ph (02) 4365 1668 Fax (02) 4367 6556  
Email centralcoast@northrop.com.au ABN 81 094 433 100

PROJECT

REMONDIS RESOURCE RECOVERY  
FACILITY & TRUCK PARKING DEPOT  
21D & 21F SCHOOL DRIVE, TOMAGO

DRAWING TITLE

INTERNAL CIVIL WORKS  
CONCEPT STORMWATER  
MANAGEMENT & LEVELS PLAN  
SHEET 2

JOB NUMBER

NL201175

DRAWING NUMBER


C3.2

REVISION

B

DRAWING SHEET SIZE = A1

ARCHITECT



Central Coast

Suite 4, 257-259 Central Coast Hwy, Erina NSW 2250  
Ph (02) 4365 1668 Fax (02) 4367 6556  
Email centralcoast@northrop.com.au ABN 81 094 433 100

PROJECT

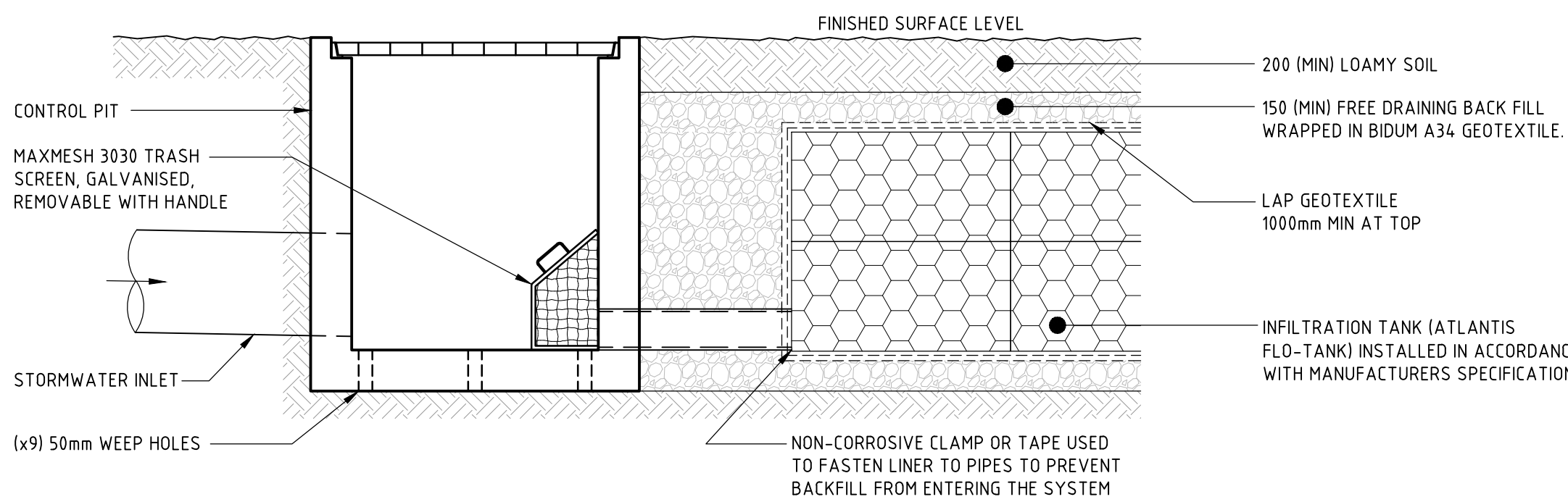
REMONDIS RESOURCE RECOVERY  
FACILITY & TRUCK PARKING DEPOT  
21D & 21F SCHOOL DRIVE, TOMAGO





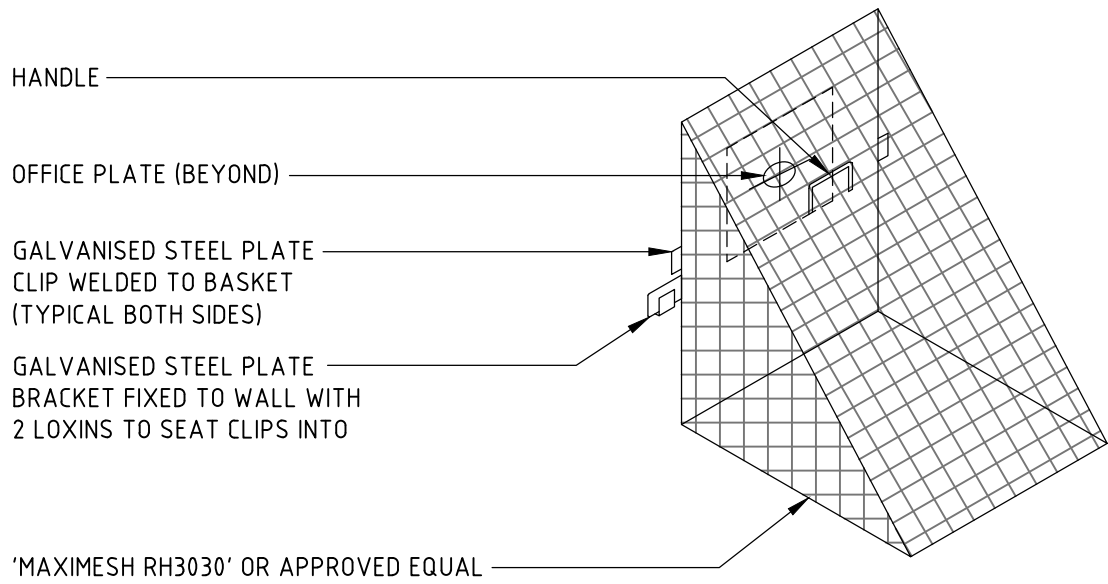


DRAWN: KATHLEEN TURTON    DESIGNED: ROBERT SUCKLING    JOB MANAGER: BEN CLARK    VERIFIER:

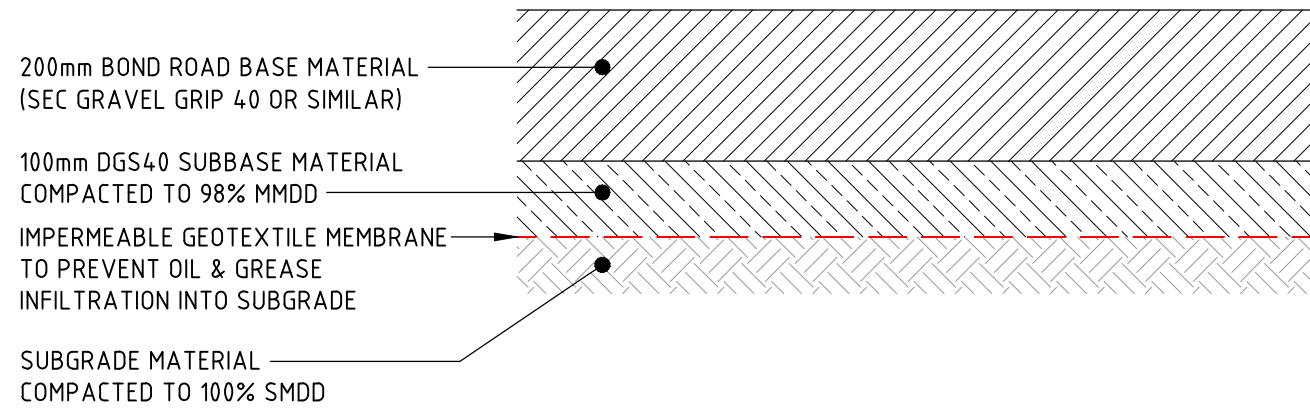


TYPICAL SECTION OSD / INFILTRATION SYSTEM

NOTE: ASSUMED INFILTRATION RATE OF 100mm PER HOUR. INFILTRATION RATE TO BE CONFIRMED ONSITE VIA A DOUBLE RING INFILTRMETER TEST METHOD (ASTM D3385-18). CONTACT NORTHPROP ONCE TEST RESULTS ARE AVAILABLE AS THIS MAY IMPACT THE SIZE OF THE INFILTRATION SYSTEM.

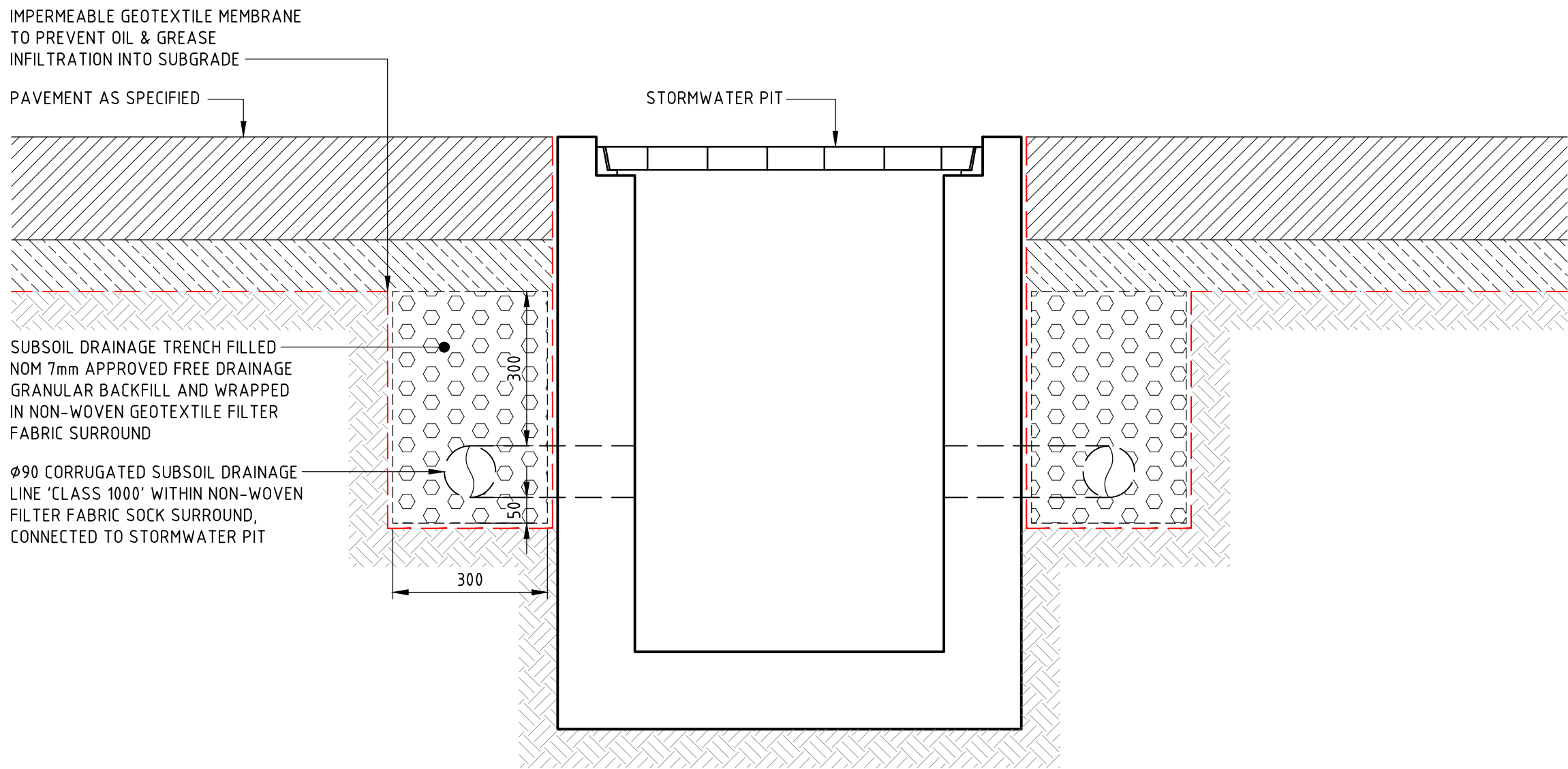


TRASH SCREEN DETAIL



INDICATIVE TRAFFICABLE PAVEMENT DETAIL

NOTE: PAVEMENT DESIGN TO BE CONFIRMED BY SUITABLY QUALIFIED GEOTECHNICAL ENGINEER FOLLOWING DETAILED GEOTECHNICAL INVESTIGATION DURING DETAILED DESIGN



PAVEMENT SUBSOIL DETAIL AT STORMWATER PITS

NOT FOR CONSTRUCTION

REVISION	DESCRIPTION	ISSUED	VER'D	APP'D	DATE
1	PRELIMINARY	KT			07.08.20
A	DEVELOPMENT APPLICATION	KT			28.08.20

CLIENT
<b>REMONDIS</b> WORKING FOR THE FUTURE
DRAWING NOT TO BE USED FOR CONSTRUCTION UNLESS VERIFICATION SIGNATURE HAS BEEN ADDED

ARCHITECT
<b>EJE</b> architecture
THE COPYRIGHT OF THIS DRAWING REMAINS WITH NORTHPROP CONSULTING ENGINEERS PTY LTD.

ALL SETOUT TO ARCHITECT'S DRAWINGS. DIMENSIONS TO BE VERIFIED WITH THE ARCHITECT AND ON SITE BEFORE MAKING SHOP DRAWINGS OR COMMENCING WORK. NORTHPROP ACCEPTS NO RESPONSIBILITY FOR THE USABILITY, COMPLETENESS OR SCALE OF DRAWINGS TRANSFERRED ELECTRONICALLY.
DETAILS 1:20@A1 0 200 400 600 800 1000
DETAILS 1:10@A1 0 100 200 300 400 500

<b>NORTHPROP</b> Central Coast Suite 4, 257-259 Central Coast Hwy, Erina NSW 2250 Ph (02) 4365 1668 Fax (02) 4367 6555 Email centralcoast@northrop.com.au ABN 81 094 433 100
--

PROJECT
<b>REMONDIS RESOURCE RECOVERY FACILITY &amp; TRUCK PARKING DEPOT 21D &amp; 21F SCHOOL DRIVE, TOMAGO</b>

DRAWING TITLE
<b>INTERNAL CIVIL WORKS CONCEPT CIVIL DETAILS SHEET 1</b>

JOB NUMBER
<b>NL201175</b>
DRAWING NUMBER
<b>C5.1</b>
REVISION
<b>A</b>
DRAWING SHEET SIZE = A1