

REMONDIS RESOURCE RECOVERY FACILITY & TRUCK PARKING DEPOT LANDSCAPE DEVELOPMENT APPLICATION DOCUMENTATION (DA) LOT - 21D, 21F & 301 SCHOOL DRIVE, TOMAGO, NSW 2322.



LOCALITY PLAN Source: Nearmap, 2020
Scale 1:4000 @ A1

0 50 100 150 200m

Sheet No.	Drawing Title	Revision	Date
LP00	COVER SHEET	C	16/11/20
LP01	SITE ANALYSIS PLAN	C	16/11/20
LP02	LANDSCAPE CONCEPT PLAN	C	16/11/20
LP03	LANDSCAPE RECOMMENDATION PLAN	C	16/11/20
LP04	PLANT IMAGES	C	16/11/20



SITE PLAN Source: Nearmap, 2020
Scale 1:2000 @ A1

0 30 60 90 120m



Studio 1, 88 Fern Street
PO Box 111
Islington NSW 2296
Phone (02) 4965 3500
Fax (02) 4965 3555
admin@moirla.com.au
www.moirla.com.au

ARCHITECT:
EBE Architecture
ENGINEER:
Northrop

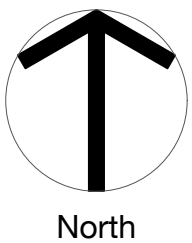
CLIENT:
Remondis

NOTE: DRAWING PURPOSES FOR APPROVAL ONLY. NOT FOR CONSTRUCTION.

No:	DATE:	REVISION:
A	3/8/20	FOR APPROVAL
B	24/8/20	FOR APPROVAL
C	16/11/20	FOR APPROVAL

BY: CN
PROJECT:
Remondis Resource Recovery Facility & Truck Parking Depot
Lot 21D, 21F & Lot 301 School Drive, Tomago, NSW

Status: FOR APPROVAL



COVER SHEET

SCALE: As Shown
ORIGINAL DRAWING AT A1.
Drawn By: CN
Checked By: MW Approved By: DM

Project No.
Drawing No.
LP00

1890
Rev
C



LEGEND

Site boundary

Site cross fall



View from the entrance of Lot 21F, looking north west along the boundary of Lot 21D. Grasses repopulating the area with gravel visible in the foreground from previous use of the site.



View from the eastern corner of Lot 21D, looking north along the boundary adjacent to the existing storage tank area.



View from the eastern corner of Lot 21D, looking west along the boundary. The existing road verge of Lot 21D and private access road in the fore to mid-ground.

SITE ANALYSIS PLAN

Scale 1:500 @ A1

0 10 20 30 40m



Studio 1, 88 Fern Street
PO Box 111
Islington NSW 2296
Phone (02) 4965 3500
Fax (02) 4965 3555
admin@moirla.com.au
www.moirla.com.au

ARCHITECT:
EBE Architecture
ENGINEER:
Northrop

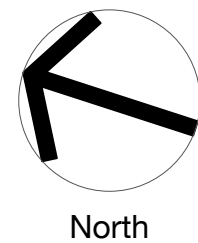
CLIENT:
Remondis

NOTE: DRAWING PURPOSES FOR APPROVAL ONLY. NOT FOR CONSTRUCTION.

No: DATE: REVISION:
A 3/8/20 FOR APPROVAL
B 24/8/20 FOR APPROVAL
C 16/11/20 FOR APPROVAL

BY: PROJECT:
CN Remondis Resource Recovery Facility & Truck Parking Depot
CN Lot 21D, 21F & Lot 301 School Drive, Tomago, NSW

Status: FOR APPROVAL



SITE ANALYSIS PLAN

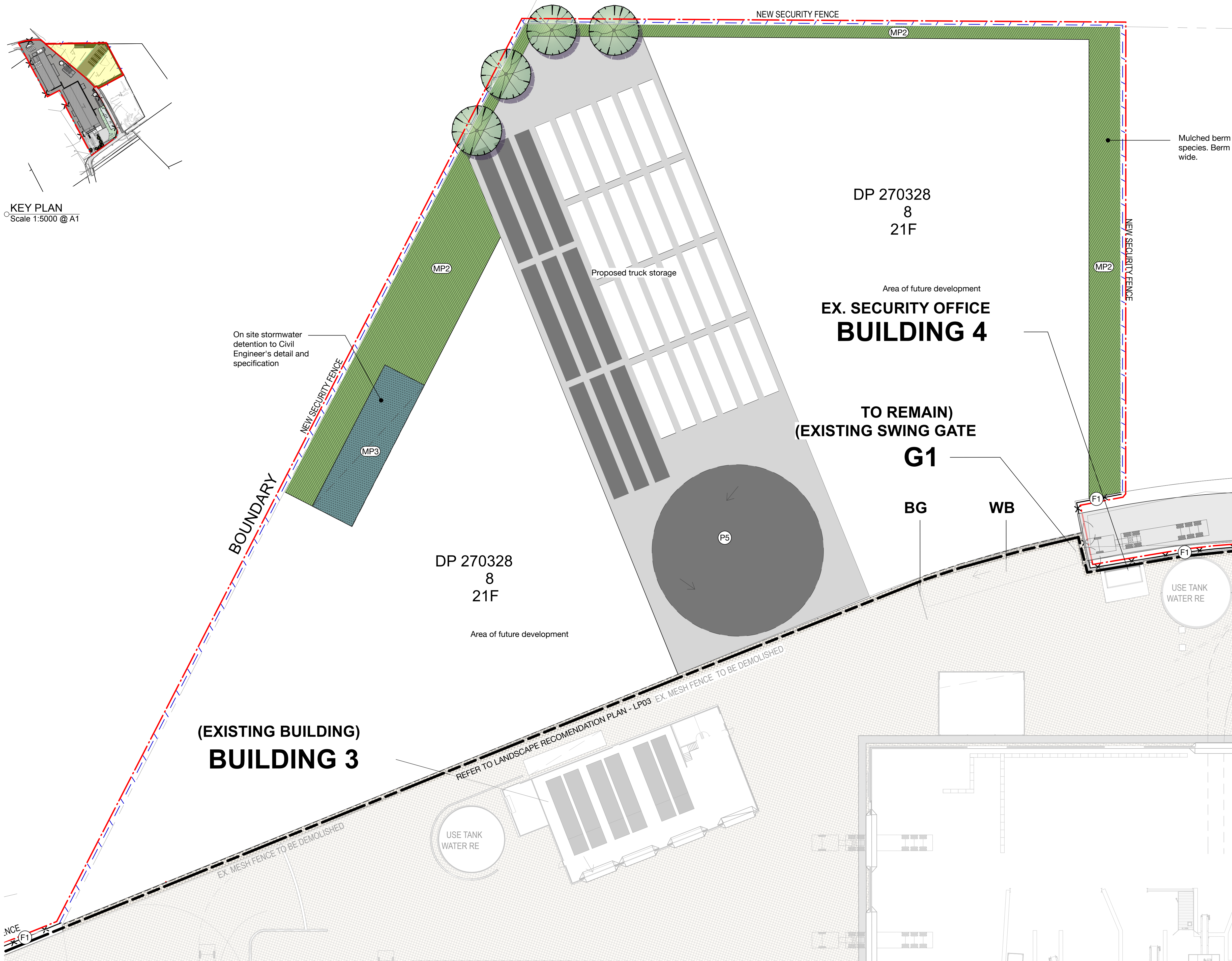
SCALE: 1:500

ORIGINAL DRAWING AT A1.
Drawn By: CN
Checked By: MW Approved By: DM

Project No.

Drawing No.
LP01

1890
Rev
C

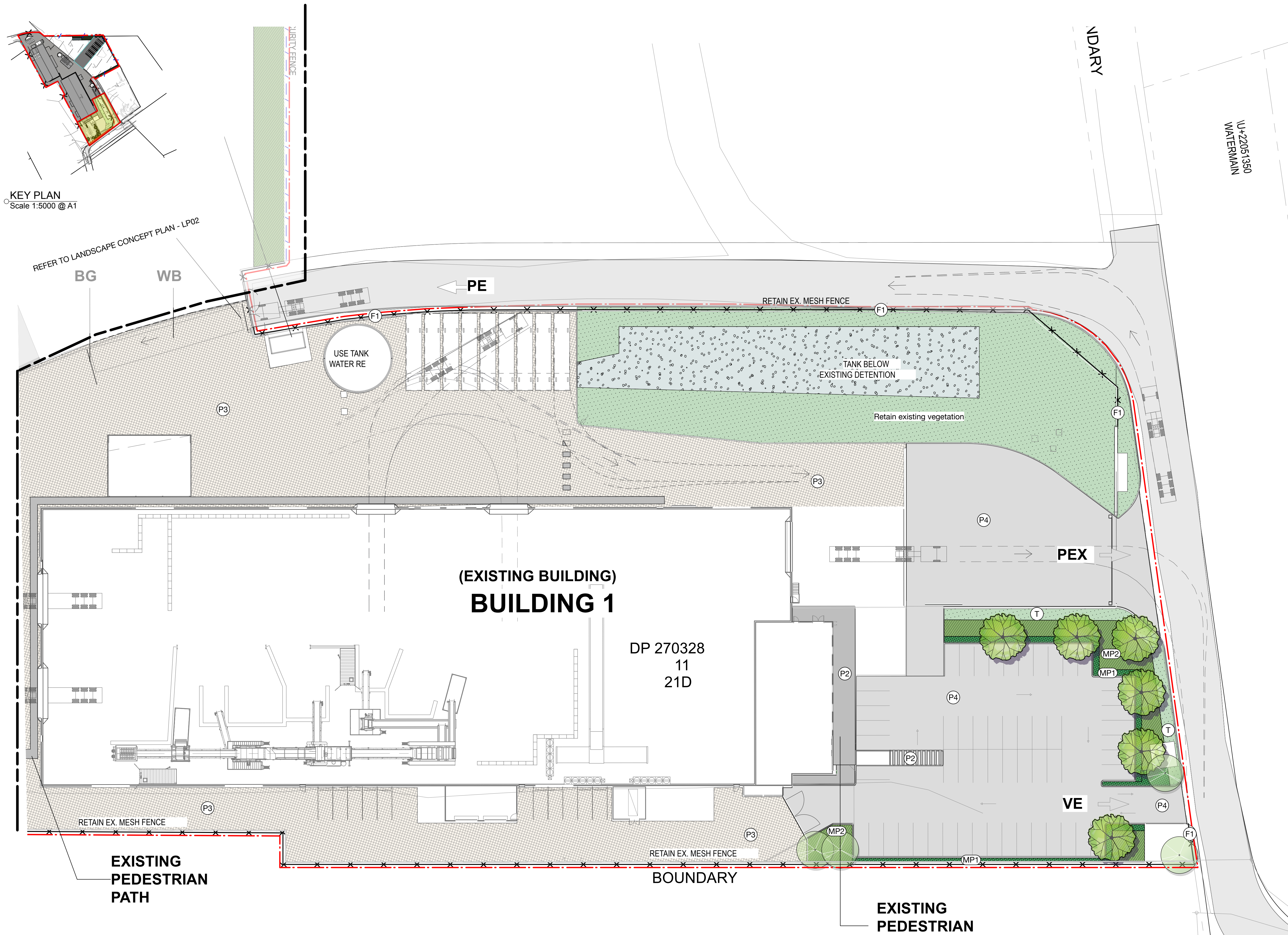


KEY PLAN
Scale 1:5000 @ A1

LANDSCAPE CONCEPT PLAN
Scale 1:300 @ A1

LEGEND

- Site boundary
- Existing contours
- Existing tree - to be retained & protected
- Fence 1 - Existing security fence
- Proposed security fence
- P2 Existing concrete footpath
- P3 Existing concrete paving
- Turf
- Existing asphalt paving
- Existing road
- Proposed truck parking paving - refer tp Engineer's drawings
- Area of future development - Seed with native grasses where disturbed during construction
- TREES**
 - Melaleuca linariifolia*
Narrow-leaved Paperbark
 - Angophora costata*
Sydney Red Gum
- MP1** Mass Planting Type 1 - 4/m²
Schoenus ericetorum
Lomandra longifolia
Dianella caerulea var. *assera*
Banksia 'Birthday Candles'
Carpobrotus glaucescens
Imperata cylindrica
- MP2** Mass Planting Type 2 - 3/m²
Caltrix tetragona
Banksia serrata
Banksia spinulosa
Leptospermum laevigatum
Doryanthes excelsa
- MP3** Mass Planting Type 3 - 4/m²
Lomandra longifolia
Imperata cylindrica
Juncus usitatus



KEY PLAN
Scale 1:5000 @ A1

LANDSCAPE RECOMENDATION PLAN
Scale 1:300 @ A1

LEGEND

- Site boundary
- Existing contours
- Existing tree - to be retained & protected
- Fence 1 - Existing security fence
- Proposed security fence
- P2 Existing concrete footpath
- P3 Existing concrete paving
- Turf
- Existing asphalt paving
- Existing road
- Proposed truck parking paving - refer tp Engineer's drawings

Area of future development -
Seed with native grasses
where disturbed during
construction

TREES

- Melaleuca linariifolia*
Narrow-leaved Paperbark
- Angophora costata*
Sydney Red Gum

MP1 Mass Planting Type 1 - 4/m²
Schoenus ericetorum
Lomandra longifolia
Dianella caerulea var. *assera*
Banksia 'Birthday Candles'
Carpobrotus glaucescens
Imperata cylindrica

MP2 Mass Planting Type 2 - 3/m²
Caltrix tetragona
Banksia serrata
Banksia spinulosa
Leptospermum laevigatum
Doryanthes excelsa

MP3 Mass Planting Type 3 - 4/m²
Lomandra longifolia
Imperata cylindrica
Juncus usitatus
Juncus kraussii



Studio 1, 88 Fern Street
PO Box 111
Islington NSW 2296
Phone (02) 4965 3500
Fax (02) 4965 3555
admin@moirla.com.au
www.moirla.com.au

ARCHITECT:
EBE Architecture
ENGINEER:
Northrop

CLIENT:
Remondis

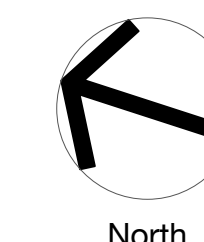
NOTE: DRAWING PURPOSES FOR APPROVAL ONLY. NOT FOR CONSTRUCTION.

No: A DATE: 3/8/20 REVISION: FOR APPROVAL
B DATE: 24/8/20 FOR APPROVAL
C DATE: 16/11/20 FOR APPROVAL

BY: CN
CN
CN

PROJECT:
Remondis Resource Recovery Facility & Truck Parking Depot
Lot 21D, 21F & Lot 301 School Drive, Tomago, NSW

Status: FOR APPROVAL



LANDSCAPE RECOMMENDATION PLAN

SCALE: 1:300 Project No. 1890
ORIGINAL DRAWING AT A1. Drawing No. LP03
Drawn By: CN Rev C
Checked By: MW Approved By: DM

TREES



Angophora costata



Melaleuca linariifolia

SHRUBS



Banksia serrata



Leptospermum laevigatum



Calytrix tatragona



Doryanthes excelsa

GRASSES



Imperata cylindrica



Schoenus ericetorum



Lomandra longifolia



Dianella caerulea

GROUNDCOVERS



Carpobrotus glaucens



Banksia 'Birthday Candles'

Notes:

Angophora costata, commonly known as the "Sydney Red Gum" is a medium-sized to tall tree, endemic to eastern Australia. It is capable of growing up to 30m tall.

Melaleuca linariifolia or "Narrow-leaved Paperbark" is a tree part of the MYRTACEAE family endemic to NSW. It is hardy with flowers in late spring or summer. It is a smaller tree capable of growing up to 10m high depending on conditions.

Banksia serrata also commonly referred to as "Old Man Banksia" is a woody shrub or small native to the east coast of Australia. It commonly grows as a gnarled tree up to 16m high though commonly much smaller in exposed conditions.

Leptospermum laevigatum commonly known as the "Coast Tea Tree" is a shrub native to south-eastern Australia. In ideal conditions, it is capable of reaching a height of 6m. It flowers mostly from August to October with fruit falling off shortly after reaching maturity.

Calytrix tetragona or "Fringe Myrtle" is a shrub widely distributed throughout Australia. Usually growing to a height of 1000mm in height, with a bushy growth form.

Imperata cylindrica commonly referred to as "Cogon Grass" is a widely distributed grass species capable of growing in a wide variety of conditions. It is a tall growing grass often used in erosion prevention near beach areas.

Schoenus ericetorum or "Heath Bog Rush" is a small sedge growing in a wide variety of soil conditions. Typically stems grow up to 300mm in height topped with dark brown flower spikes.

Lomandra longifolia or often referred to as "Basket Grass" is a native Australian grass growing in a variety of sandy soils in a wide range of conditions. Glossy leaves typically grow to a height between 400mm to 1000mm.

Carpobrotus glaucescens or "Angular "Sea-fig" is a coastal groundcover native to Australia. It has succulent leaves with a low spreading growth form.

Banksia 'Birthday Candles' is a low growing, spreading Banksia growing to a height of 500mm. It is a hardy plant growing well in sandy, well drained soil.

Doryanthes excelsa occurs naturally along the central coast of NSW. The plant has a striking appearance with many lance shaped leaves, growing in clumps up to 1m high. Red trumpet-like flowers are borne on a leafy flower stem between 2 and 4m high.



Studio 1, 88 Fern Street
PO Box 111
Islington NSW 2296
Phone (02) 4965 3500
Fax (02) 4965 3555
admin@moirla.com.au
www.moirla.com.au

ARCHITECT:
EBE Architecture
ENGINEER:
Northrop

CLIENT:
Remondis

NOTE: DRAWING PURPOSES FOR APPROVAL ONLY. NOT FOR CONSTRUCTION.

No: A DATE: 3/8/20 REVISION: FOR APPROVAL
B DATE: 24/8/20 FOR APPROVAL
C DATE: 16/11/20 FOR APPROVAL

BY: CN
CN
CN

PROJECT:
Remondis Resource Recovery Facility & Truck Parking Depot
Lot 21D, 21F & Lot 301 School Drive, Tomago, NSW

Status: FOR APPROVAL

North

PLANT IMAGES

SCALE: NA
ORIGINAL DRAWING AT A1.
Drawn By: CN
Checked By: MW Approved By: DM

Project No. 1890
Drawing No. LP04
Rev C