

**1-15 AND 2-12 CONFERTA AVENUE,
ROUSE HILL NSW 2155
TALLAWONG STATION PRECINCT SOUTH
PRE-DILAPIDATION REPORT**

**DEICORP PROJECTS
(TALLAWONG STATION) PTY LTD**

Job No. 191294.0
24/03/2020

Australian Consulting Engineers (NSW) Pty Ltd

ABN: 16 611 393 518

Shop 2, 141 Concord Road, North Strathfield NSW 2137

Phone: +61 2 9763 1500

Fax: +61 2 9763 1515

Web: www.aceeng.com.au

Email: info@aceeng.com.au



Contents

Contents 2

Introduction 3

Description of Assessment Terms 4

Inspected Areas..... 5

Appendix A Aristida Street Council Assets 6

Appendix B Conferta Avenue Council Assets 22

Appendix C Cudgrong Road Council Assets 207

Appendix D Schofields Road Council Assets 233

Appendix E Themeda Avenue Council Assets 327

Appendix F (Car Park P1) 400

Appendix G (Car Park P2)..... 438

Appendix H (Car Park P3)..... 498

Record of Inspections..... 545

Summary 546

Introduction

Important Information Regarding the Scope and Limitations of the Inspection and this Report

- I. This report is **not** an all-encompassing report dealing with the building from every aspect. This report is **not** a Certificate of Compliance with the requirements of any Act, Regulation, Ordinance or by-law. It is **not** a structural report. Should you require any advice of a structural nature you should contact a structural engineer.
- II. **THIS IS A VISUAL INSPECTION ONLY** limited to those areas and the sections of the property fully accessible to the inspector on the date of inspection. An inspection **does not** include breaking apart, dismantling, removing or moving objects including but not limited to, foliage, mouldings, roof insulation / insulation, floor or wall coverings, sidings, ceilings, floors, furnishings, appliances or personal possessions. The inspector **cannot** see inside walls, between floors, inside skill iron roofing, behind stored goods in cupboards, other areas that are concealed or obstructed. The inspector **did not** dig, gouge, force or perform any other invasive procedures. Visible timbers cannot be destructively probed or hit without the written permission of the property owner.
- III. This report **does not** and **cannot** make comment upon defects that may have been concealed during the assessment or detection of defects (including- rising damp and leaks) which may be subject to the prevailing weather conditions; the presence or absence of timber pests, gas-fittings, common property areas, environmental concerns; the proximity of the property to flight paths, railways, or busy traffic; noise levels; health and safety issues; heritage concerns; security concerns; fire protections; site drainage (apart from surface water drainage); swimming pools and spas (non-structural); detection and identification of illegal building work ; detection and identification of illegal plumbing work; durability of exposed finishes; neighbourhood problems; and document analysis; electrical installations; any matters that are solely regulated by statute; any area(s) or item(s) that **could not** be inspected by the consultant. Accordingly this report is **not a guarantee** that defects and/ or damage **does not** exist in any inaccessible or partly inaccessible areas or sections of the property. (NB: such matters may upon request be covered under the terms of a special purpose property report.)
- IV. In the event of any controversy or claim arising out of, or relating to this report, it will be settled by arbitration, in accordance with the rules of the Institute of Arbitrators Australia. Any judgments from such arbitration shall be binding upon both parties.



Description of Assessment Terms

- **Good** Indicates that there are no defects evident and the items described are in good condition for their age.
- **Reasonable** Indicates the item may have minor defects that should be noted but not significant enough to need immediate rectification
- **Poor** Indicates that general maintenance or minor repair may be warranted
- **Defective** Indicates there is a significant fault that should be rectified.



Inspected Areas

The Area*(s) inspected were:

The footpath, kerb and gutter directly adjacent to the site and roads within **20m** of the main building and within the boundaries of the site were inspected, as well as the neighbouring properties.

The Area*(s) NOT Accessible for any Inspection and the Reason(s) why were:

No inspection was made of concealed frame timbers or any areas concealed by wall linings/sidings, soil, landscaping, rubbish, floor coverings, furniture, pictures, appliances, stored items, insulation, hollow blocks/pots or any other obstructions to visual inspection.

The internal areas of all neighbouring properties

Further than **20m** from the said sight unless otherwise stated.

The Area*(s) in which Visual Inspection was obstructed and the reason(s) why were:

Floor coverings and furnishings

Vegetation growth

Stored boxes etc...

* No comment is made on these concealed areas.



Appendix A

Aristida Street Council Assets





Figure 1 – The following images display condition of Aristida Street Council Assets

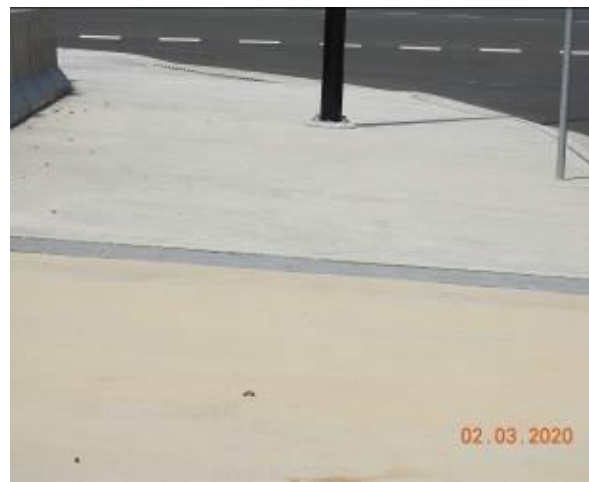


Figure 2 – General Condition of footpath pavement



Figure 3 – Crack propagation through footpath pavement



Figure 4 – Crack propagation through footpath pavement



Figure 5 – Crack propagation through footpath pavement



Figure 6 – Crack propagation through footpath pavement



Figure 7 – Crack propagation through footpath pavement



Figure 8 – Crack propagation and loss of material through footpath pavement



Figure 9 – General Condition of footpath pavement



Figure 10 – General Condition of footpath pavement



Figure 11 – General Condition of footpath pavement



Figure 12 – General Condition of footpath pavement



Figure 13 – General Condition of footpath pavement



Figure 14 – General Condition of footpath pavement



Figure 15 – General Condition of footpath pavement



Figure 16 – General Condition of footpath pavement



Figure 17 – General Condition of kerb and gutter



Figure 18 – General Condition of stormwater inlet pit



Figure 19 – General Condition of kerb and gutter



Figure 20 – Loss of material through kerb and gutter



Figure 21 – Crack propagation through kerb and gutter



Figure 22 – Crack propagation through kerb and gutter



Figure 23 – General Condition of stormwater inlet pit



Figure 24 – General Condition of kerb and gutter



Figure 25 – Crack propagation through kerb and gutter



Figure 26 – Crack propagation through kerb and gutter



Figure 27 – Crack propagation through kerb and gutter



Figure 28 – General Condition of kerb and gutter



Figure 29 – Crack propagation through kerb and gutter



Figure 30 – Crack propagation through kerb and gutter



Figure 31 – Crack propagation through kerb and gutter



Figure 32 – General Condition of stormwater inlet pit



Figure 33 – General Condition of kerb and gutter



Figure 34 – Crack propagation through kerb and gutter



Figure 35 – Crack propagation through kerb and gutter



Figure 36 – Crack propagation through kerb and gutter



Figure 37 – Crack propagation through kerb and gutter



Figure 38 – General Condition of kerb and gutter



Figure 39 – Crack propagation through kerb and gutter



Figure 40 – Crack propagation through kerb and gutter



Figure 41 – Crack propagation and loss of material through kerb and gutter



Figure 42 – General Condition of kerb and gutter



Figure 43 – Crack propagation through kerb



Figure 44 – Crack propagation and loss of material through kerb and gutter



Figure 45 – Crack propagation through kerb



Figure 46 – General Condition of kerb and gutter



Figure 47 – Crack propagation through kerb



Figure 48 – Crack propagation through kerb and gutter



Figure 49 – General Condition of kerb and gutter



Figure 50 – Crack propagation through kerb and gutter



Figure 51 – Crack propagation through kerb and gutter



Figure 52 – General Condition of kerb and gutter



Figure 53 – Crack propagation through kerb and gutter



Figure 54 – Crack propagation and evidence of patchwork through kerb and gutter



Figure 55 – Crack propagation through kerb and gutter



Figure 56 – Crack propagation and evidence of patchwork through kerb and gutter



Figure 57 – General Condition of layback and gutter

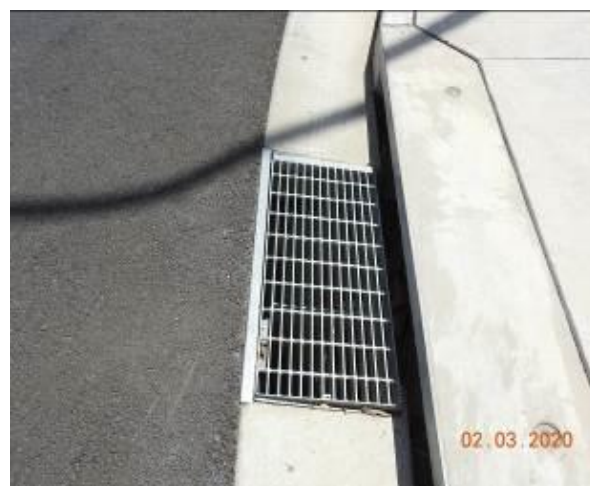


Figure 58 – General Condition of stormwater inlet pit



Figure 59 – General Condition of kerb and gutter

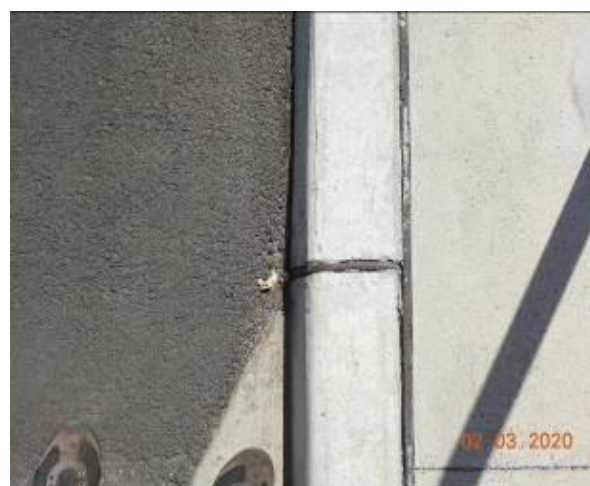


Figure 60 – Crack propagation through kerb



Figure 61 – Crack propagation through kerb



Figure 62 – General Condition of kerb



Figure 63 – General Condition of kerb



Figure 64 – General Condition of road surface



Figure 65 – General Condition of road surface



Figure 66 – General Condition of road surface



Figure 67 – General Condition of road surface



Figure 68 – General Condition of road surface



Figure 69 – General Condition of road surface



Figure 70 – General Condition of road surface



Figure 71 – General Condition of road surface



Figure 72 – General Condition of street sign



Figure 73 – General Condition of street sign



Figure 74 – General Condition of lamp post
Identification No.922703



Figure 75 – General Condition of plantation



Figure 76 – General Condition of lamp post



Figure 77 – General Condition of lamp post
Identification No.922702



Figure 78 – General Condition of lamp post



Figure 79 – General Condition of lamp post



Figure 80 – General Condition of lamp post
Identification No.922701



Figure 81 – General Condition of street sign



Figure 82 – General Condition of street sign



Figure 83 – General Condition of lamp post
Identification No.922668



Figure 84 – General Condition of lamp post



Comments

The section of Aristida Street which is associated with the subject site was inspected and photographic evidence compiled in order to depict the condition of the council assets along this particular stretch of road prior to the commencement of any work at the subject site.

The road surface of Aristida Street at the time of the inspection was in a good condition, no major defects.

At the same time the kerb, gutter and footpath which accompany the road way were also inspected. At the time of this inspection they were found to be in a good condition. There was evidence of material loss, cracking through the kerb, gutter and footpath, as well as cases of patchwork through the kerb and gutter.

The condition of the lamp posts, plantation, stormwater inlet pits and street signs was also inspected and were determined to be in a reasonable condition.

Refer to Appendix (A) for photographic records of the above.



Appendix B

Conferta Avenue Council Assets





Figure 85 – The following images display condition of Conferta Avenue Council Assets



Figure 86 – General Condition of footpath pavement



Figure 87 – General Condition of footpath pavement



Figure 88 – General Condition of footpath pavement



Figure 89 – General Condition of footpath pavement



Figure 90 – General Condition of grass area



Figure 91 – General Condition of service pit



Figure 92 – General Condition of gras area



Figure 93 – General Condition of gras area



Figure 94 – General Condition of gras area



Figure 95 – General Condition of gras area



Figure 96 – General Condition of gras area



Figure 97 – General Condition of gras area



Figure 98 – General Condition of gras area



Figure 99 – General Condition of service pit



Figure 100 – General Condition of gras area



Figure 101 – General Condition of gras area



Figure 102 – General Condition of gras area



Figure 103 – General Condition of gras area



Figure 104 – General Condition of gras area



Figure 105 – General Condition of gras area



Figure 106 – General Condition of gras area



Figure 107 – General Condition of gras area



Figure 108 – General Condition of gras area



Figure 109 – General Condition of service pit



Figure 110 – Loss of material through service pit



Figure 111 – General Condition of gras area



Figure 112 – General Condition of gras area



Figure 113 – General Condition of service pit



Figure 114 – General Condition of gras area



Figure 115 – General Condition of gras area



Figure 116 – General Condition of gras area



Figure 117 – General Condition of gras area



Figure 118 – General Condition of gras area



Figure 119 – General Condition of gras area



Figure 120 – General Condition of gras area



Figure 121 – General Condition of gras area



Figure 122 – General Condition of gras area



Figure 123 – General Condition of gras area



Figure 124 – General Condition of service pit



Figure 125 – General Condition of gras area



Figure 126 – General Condition of gras area



Figure 127 – General Condition of gras area



Figure 128 – General Condition of gras area



Figure 129 – General Condition of gras area



Figure 130 – General Condition of footpath pavement



Figure 131 – General Condition of footpath pavement



Figure 132 – General Condition of footpath pavement



Figure 133 – General Condition of footpath pavement



Figure 134 – General Condition of footpath pavement



Figure 135 – General Condition of footpath pavement



Figure 136 – General Condition of footpath pavement ramp



Figure 137 – General Condition of footpath pavement ramp



Figure 138 – General Condition of footpath pavement



Figure 139 – General Condition of footpath pavement



Figure 140 – General Condition of footpath pavement



Figure 141 – General Condition of footpath pavement



Figure 142 – General Condition of footpath pavement



Figure 143 – Loss of material through footpath pavement



Figure 144 – General Condition of footpath pavement



Figure 145 – Loss of material through footpath pavement



Figure 146 – General Condition of footpath pavement



Figure 147 – General Condition of footpath pavement



Figure 148 – General Condition of footpath pavement



Figure 149 – General Condition of footpath pavement



Figure 150 – General Condition of footpath pavement



Figure 151 – General Condition of footpath pavement



Figure 152 – General Condition of footpath pavement ramp



Figure 153 – General Condition of footpath pavement



Figure 154 – Crack propagation through footpath pavement



Figure 155 – General Condition of footpath pavement



Figure 156 – General Condition of footpath pavement



Figure 157 – Crack propagation through footpath pavement



Figure 158 – General Condition of footpath pavement



Figure 159 – General Condition of service pit



Figure 160 – General Condition of footpath pavement



Figure 161 – General Condition of footpath pavement



Figure 162 – General Condition of footpath pavement



Figure 163 – General Condition of footpath pavement



Figure 164 – General Condition of footpath pavement



Figure 165 – General Condition of footpath pavement



Figure 166 – General Condition of footpath pavement



Figure 167 – General Condition of footpath pavement



Figure 168 – General Condition of footpath pavement



Figure 169 – General Condition of footpath pavement



Figure 170 – General Condition of footpath pavement



Figure 171 – General Condition of footpath pavement



Figure 172 – General Condition of footpath pavement



Figure 173 – General Condition of footpath pavement



Figure 174 – General Condition of footpath pavement



Figure 175 – General Condition of footpath pavement



Figure 176 – General Condition of public bench



Figure 177 – General Condition of footpath pavement



Figure 178 – General Condition of public bench



Figure 179 – General Condition of footpath pavement



Figure 180 – General Condition of footpath pavement



Figure 181 – General Condition of footpath pavement



Figure 182 – General Condition of driveway pavement



Figure 183 – General Condition of driveway pavement



Figure 184 – General Condition of driveway pavement



Figure 185 – General Condition of driveway pavement



Figure 186 – Crack propagation through driveway pavement



Figure 187 – Crack propagation through driveway pavement



Figure 188 – General Condition of driveway pavement



Figure 189 – Crack propagation through driveway pavement



Figure 190 – General Condition of driveway pavement



Figure 191 – General Condition of driveway pavement



Figure 192 – General Condition of driveway pavement



Figure 193 – General Condition of driveway pavement



Figure 194 – Crack propagation through driveway pavement



Figure 195 – Crack propagation through driveway pavement



Figure 196 – General Condition of driveway pavement



Figure 197 – General Condition of driveway pavement



Figure 198 – General Condition of driveway pavement



Figure 199 – Crack propagation through driveway pavement



Figure 200 – General Condition of driveway pavement



Figure 201 – General Condition of driveway pavement



Figure 202 – General Condition of driveway pavement



Figure 203 – General Condition of driveway pavement



Figure 204 – General Condition of driveway pavement



Figure 205 – General Condition of traffic island



Figure 206 – General Condition of traffic island



Figure 207 – General Condition of traffic island



Figure 208 – General Condition of footpath pavement



Figure 209 – General Condition of footpath pavement



Figure 210 – General Condition of footpath pavement



Figure 211 – General Condition of footpath pavement



Figure 212 – General Condition of footpath pavement



Figure 213 – General Condition of footpath pavement



Figure 214 – General Condition of footpath pavement



Figure 215 – General Condition of footpath pavement



Figure 216 – Loss of material through footpath pavement



Figure 217 – General Condition of footpath pavement



Figure 218 – General Condition of footpath pavement



Figure 219 – General Condition of footpath pavement



Figure 220 – General Condition of footpath pavement



Figure 221 – General Condition of footpath pavement



Figure 222 – General Condition of footpath pavement



Figure 223 – General Condition of footpath pavement



Figure 224 – General Condition of footpath pavement



Figure 225 – General Condition of footpath pavement



Figure 226 – General Condition of footpath pavement



Figure 227 – General Condition of footpath pavement



Figure 228 – General Condition of public bench



Figure 229 – General Condition of public bench



Figure 230 – General Condition of footpath pavement



Figure 231 – General Condition of footpath pavement



Figure 232 – General Condition of footpath pavement



Figure 233 – General Condition of footpath pavement



Figure 234 – General Condition of footpath pavement



Figure 235 – General Condition of footpath pavement



Figure 236 – General Condition of footpath pavement



Figure 237 – General Condition of footpath pavement



Figure 238 – General Condition of footpath pavement



Figure 239 – General Condition of footpath pavement



Figure 240 – General Condition of service pit



Figure 241 – General Condition of footpath pavement



Figure 242 – General Condition of footpath pavement



Figure 243 – General Condition of service pit



Figure 244 – General Condition of service pit



Figure 245 – General Condition of footpath pavement



Figure 246 – General Condition of footpath pavement



Figure 247 – General Condition of footpath pavement



Figure 248 – General Condition of footpath pavement



Figure 249 – General Condition of footpath pavement



Figure 250 – General Condition of footpath pavement



Figure 251 – General Condition of kerb and gutter



Figure 252 – Crack propagation through kerb and gutter



Figure 253 – General Condition of kerb and gutter



Figure 254 – General Condition of stormwater inlet pit



Figure 255 – General Condition of kerb and gutter



Figure 256 – General Condition of kerb and gutter



Figure 257 – General Condition of kerb and gutter



Figure 258 – Crack propagation through kerb and gutter



Figure 259 – General Condition of kerb and gutter



Figure 260 – Crack propagation through kerb and gutter



Figure 261 – General Condition of kerb and gutter



Figure 262 – Crack propagation through kerb and gutter



Figure 263 – General Condition of kerb and gutter



Figure 264 – Crack propagation through kerb and gutter



Figure 265 – General Condition of kerb and gutter



Figure 266 – Crack propagation through kerb and gutter



Figure 267 – General Condition of kerb and gutter



Figure 268 – Crack propagation through kerb and gutter



Figure 269 – General Condition of kerb and gutter



Figure 270 – General Condition of kerb and gutter



Figure 271 – Crack propagation through kerb and gutter



Figure 272 – General Condition of kerb and gutter



Figure 273 – Crack propagation through kerb and gutter

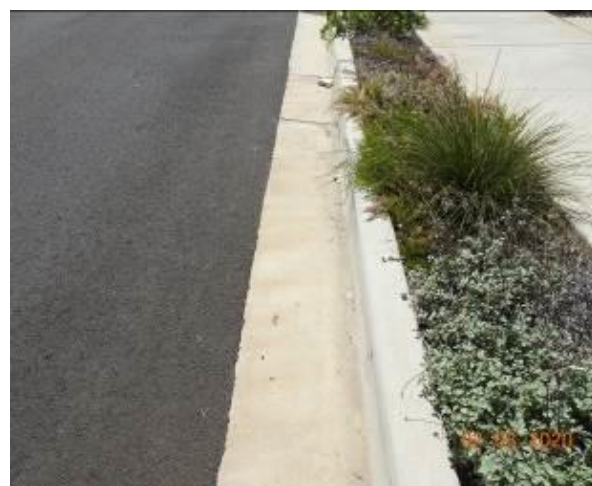


Figure 274 – General Condition of kerb and gutter



Figure 275 – General Condition of kerb



Figure 276 – General Condition of kerb and gutter



Figure 277 – Crack propagation through kerb and gutter



Figure 278 – Crack propagation through kerb and gutter



Figure 279 – General Condition of stormwater inlet pit



Figure 280 – General Condition of kerb and gutter



Figure 281 – Crack propagation through kerb and gutter



Figure 282 – General Condition of kerb and gutter



Figure 283 – General Condition of kerb and gutter



Figure 284 – General Condition of kerb and gutter



Figure 285 – Crack propagation through kerb and gutter



Figure 286 – General Condition of kerb and gutter



Figure 287 – General Condition of kerb and gutter



Figure 288 – General Condition of kerb and gutter



Figure 289 – Crack propagation through kerb and gutter



Figure 290 – General Condition of kerb and gutter



Figure 291 – General Condition of kerb and gutter



Figure 292 – Crack propagation through kerb and gutter



Figure 293 – General Condition of kerb and gutter



Figure 294 – Crack propagation through kerb and gutter



Figure 295 – General Condition of kerb and gutter



Figure 296 – General Condition of stormwater inlet pit



Figure 297 – General Condition of kerb and gutter



Figure 298 – Crack propagation through kerb and gutter



Figure 299 – General Condition of gutter



Figure 300 – General Condition of gutter



Figure 301 – General Condition of gutter



Figure 302 – General Condition of gutter



Figure 303 – General Condition of kerb and gutter



Figure 304 – Crack propagation through kerb and gutter



Figure 305 – Crack propagation through kerb and gutter



Figure 306 – Crack propagation through kerb and gutter



Figure 307 – General Condition of kerb and gutter



Figure 308 – General Condition of kerb and gutter



Figure 309 – Crack propagation through kerb and gutter



Figure 310 – General Condition of stormwater inlet pit



Figure 311 – General Condition of kerb and gutter



Figure 312 – Crack propagation through kerb and gutter



Figure 313 – General Condition of kerb and gutter



Figure 314 – General Condition of kerb and gutter



Figure 315 – Crack propagation through kerb and gutter



Figure 316 – General Condition of kerb and gutter



Figure 317 – Crack propagation through kerb and gutter



Figure 318 – General Condition of kerb and gutter



Figure 319 – Crack propagation and loss of material through kerb and gutter



Figure 320 – General Condition of kerb and gutter



Figure 321 – General Condition of kerb and gutter



Figure 322 – Loss of material through kerb and gutter



Figure 323 – General Condition of kerb and gutter



Figure 324 – General Condition of kerb and gutter



Figure 325 – General Condition of kerb and gutter



Figure 326 – General Condition of kerb and gutter



Figure 327 – General Condition of kerb and gutter



Figure 328 – Crack propagation through kerb and gutter



Figure 329 – General Condition of stormwater inlet pit



Figure 330 – General Condition of kerb and gutter



Figure 331 – General Condition of kerb and gutter



Figure 332 – Loss of material through kerb and gutter



Figure 333 – General Condition of kerb and gutter



Figure 334 – General Condition of kerb and gutter



Figure 335 – Crack propagation and loss of material through kerb and gutter



Figure 336 – General Condition of kerb and gutter



Figure 337 – Crack propagation through kerb and gutter



Figure 338 – General Condition of kerb and gutter



Figure 339 – Crack propagation through kerb and gutter



Figure 340 – General Condition of kerb and gutter



Figure 341 – Crack propagation through kerb and gutter



Figure 342 – Crack propagation through kerb and gutter



Figure 343 – General Condition of kerb and gutter



Figure 344 – Crack propagation through kerb and gutter



Figure 345 – General Condition of kerb and gutter



Figure 346 – General Condition of kerb and gutter



Figure 347 – Crack propagation through kerb and gutter



Figure 348 – General Condition of kerb and gutter



Figure 349 – General Condition of kerb and gutter



Figure 350 – General Condition of layback and gutter



Figure 351 – General Condition of kerb and gutter



Figure 352 – General Condition of stormwater inlet pit



Figure 353 – Crack propagation through kerb and gutter



Figure 354 – Crack propagation through stormwater inlet pit



Figure 355 – Crack propagation through stormwater inlet pit



Figure 356 – Crack propagation through stormwater inlet pit



Figure 357 – General Condition of kerb and gutter



Figure 358 – General Condition of kerb and gutter



Figure 359 – Crack propagation through kerb and gutter



Figure 360 – General Condition of kerb and gutter



Figure 361 – General Condition of kerb and gutter



Figure 362 – Crack propagation through kerb and gutter



Figure 363 – General Condition of kerb and gutter



Figure 364 – Crack propagation through kerb and gutter



Figure 365 – General Condition of kerb and gutter



Figure 366 – General Condition of kerb and gutter



Figure 367 – General condition of kerb and gutter



Figure 368 – Crack propagation through kerb and gutter



Figure 369 – General Condition of kerb and gutter



Figure 370 – Loss of material and Evidence of patchwork through kerb and gutter



Figure 371 – General Condition of kerb and gutter



Figure 372 – Crack propagation through kerb and gutter



Figure 373 – General Condition of kerb and gutter



Figure 374 – Crack propagation through kerb



Figure 375 – Loss of material through kerb



Figure 376 – General Condition of kerb and gutter



Figure 377 – Crack propagation through kerb and gutter



Figure 378 – General Condition of kerb and gutter



Figure 379 – Crack propagation through kerb and gutter



Figure 380 – General Condition of kerb and gutter



Figure 381 – General Condition of kerb and gutter



Figure 382 – Crack propagation through kerb and gutter



Figure 383 – General Condition of stormwater inlet pit



Figure 384 – Crack propagation through stormwater inlet pit



Figure 385 – Crack propagation through stormwater inlet pit



Figure 386 – Crack propagation through stormwater inlet pit



Figure 387 – Crack propagation through stormwater inlet pit



Figure 388 – General Condition of kerb and gutter



Figure 389 – General Condition of kerb and gutter



Figure 390 – General Condition of kerb and gutter



Figure 391 – General Condition of kerb and gutter



Figure 392 – Loss of material through kerb



Figure 393 – General Condition of kerb and gutter



Figure 394 – Crack propagation through kerb and gutter



Figure 395 – Crack propagation through kerb and gutter



Figure 396 – General Condition of kerb and gutter



Figure 397 – Crack propagation through kerb and gutter



Figure 398 – General Condition of kerb and gutter



Figure 399 – General Condition of kerb and gutter



Figure 400 – Crack propagation through kerb and gutter

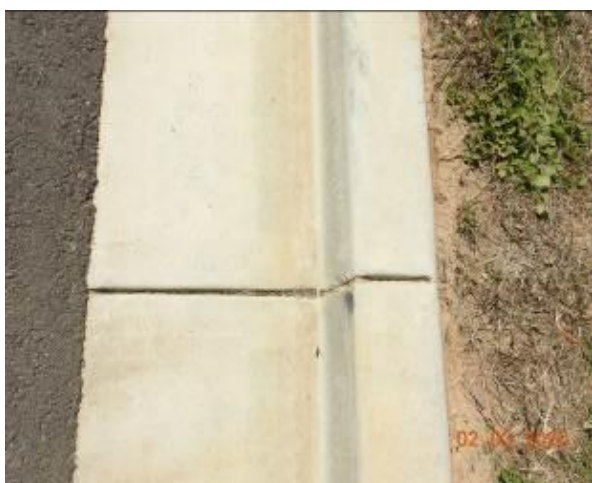


Figure 401 – Crack propagation through kerb and gutter



Figure 402 – General Condition of kerb and gutter



Figure 403 – Crack propagation through kerb and gutter



Figure 404 – General Condition of kerb and gutter



Figure 405 – General Condition of kerb and gutter



Figure 406 – Crack propagation through kerb and gutter



Figure 407 – General Condition of kerb and gutter



Figure 408 – Crack propagation through kerb and gutter



Figure 409 – General Condition of kerb and gutter



Figure 410 – Crack propagation through kerb and gutter



Figure 411 – General Condition of kerb and gutter



Figure 412 – General Condition of kerb and gutter



Figure 413 – Crack propagation through kerb and gutter



Figure 414 – General Condition of stormwater inlet pit



Figure 415 – General Condition of kerb and gutter



Figure 416 – Crack propagation through kerb and gutter



Figure 417 – Crack propagation through kerb and gutter



Figure 418 – General Condition of kerb and gutter



Figure 419 – General Condition of kerb and gutter



Figure 420 – Crack propagation through kerb and gutter



Figure 421 – General Condition of kerb and gutter



Figure 422 – Crack propagation through kerb and gutter



Figure 423 – General Condition of kerb and gutter



Figure 424 – Crack propagation through kerb and gutter



Figure 425 – General Condition of kerb and gutter



Figure 426 – General Condition of kerb and gutter



Figure 427 – General Condition of kerb and gutter



Figure 428 – Loss of material through kerb and gutter



Figure 429 – General Condition of kerb and gutter



Figure 430 – Crack propagation through kerb and gutter



Figure 431 – Loss of material through kerb



Figure 432 – General Condition of kerb and gutter



Figure 433 – General Condition of kerb and gutter



Figure 434 – Crack propagation through kerb and gutter



Figure 435 – General Condition of kerb and gutter



Figure 436 – General Condition of kerb and gutter



Figure 437 – Crack propagation through kerb and gutter



Figure 438 – General Condition of kerb and gutter



Figure 439 – Crack propagation through kerb and gutter



Figure 440 – General Condition of kerb and gutter



Figure 441 – General Condition of stormwater inlet pit



Figure 442 – Crack propagation through stormwater inlet pit



Figure 443 – Crack propagation through stormwater inlet pit



Figure 444 – Crack propagation through stormwater inlet pit



Figure 445 – General Condition of kerb and gutter



Figure 446 – Crack propagation through kerb and gutter



Figure 447 – General Condition of kerb and gutter



Figure 448 – General Condition of kerb and gutter



Figure 449 – General Condition of kerb and gutter



Figure 450 – Crack propagation through kerb and gutter



Figure 451 – General Condition of kerb and gutter



Figure 452 – Crack propagation through kerb and gutter



Figure 453 – General Condition of kerb and gutter



Figure 454 – Crack propagation through kerb and gutter



Figure 455 – General Condition of kerb and gutter



Figure 456 – Crack propagation through kerb and gutter



Figure 457 – General Condition of kerb and gutter



Figure 458 – Crack propagation through kerb and gutter



Figure 459 – General Condition of kerb and gutter



Figure 460 – Crack propagation through kerb and gutter



Figure 461 – General Condition of kerb and gutter



Figure 462 – Crack propagation through kerb and gutter



Figure 463 – General Condition of kerb and gutter



Figure 464 – Crack propagation through kerb and gutter



Figure 465 – General Condition of kerb and gutter



Figure 466 – Crack propagation through kerb and gutter



Figure 467 – Crack propagation through kerb and gutter



Figure 468 – General Condition of kerb and gutter



Figure 469 – General Condition of kerb and gutter



Figure 470 – General Condition of kerb and gutter



Figure 471 – General Condition of kerb and gutter



Figure 472 – Crack propagation through kerb and gutter



Figure 473 – General Condition of stormwater inlet pit



Figure 474 – Crack propagation through stormwater inlet pit



Figure 475 – Crack propagation through stormwater inlet pit



Figure 476 – Crack propagation through stormwater inlet pit



Figure 477 – General Condition of kerb and gutter



Figure 478 – Crack propagation through kerb and gutter



Figure 479 – General Condition of kerb and gutter



Figure 480 – Crack propagation through kerb and gutter



Figure 481 – General Condition of kerb and gutter



Figure 483 – General Condition of kerb and gutter



Figure 485 – General Condition of kerb and gutter



Figure 482 – General Condition of kerb and gutter



Figure 484 – Crack propagation through kerb and gutter



Figure 486 – Crack propagation through kerb and gutter



Figure 487 – General Condition of kerb and gutter



Figure 488 – General Condition of stormwater inlet pit



Figure 489 – General Condition of stormwater inlet pit



Figure 490 – General Condition of kerb and gutter



Figure 491 – Crack propagation through kerb



Figure 492 – General Condition of layback and gutter



Figure 493 – General Condition of layback and gutter



Figure 494 – General Condition of kerb and gutter



Figure 495 – Crack propagation through kerb and gutter



Figure 496 – General Condition of kerb and gutter



Figure 497 – Crack propagation through kerb and gutter



Figure 498 – General Condition of road surface



Figure 499 – General Condition of road surface



Figure 500 – General Condition of road surface



Figure 501 – General Condition of road surface



Figure 502 – General Condition of traffic island



Figure 503 – General Condition of traffic island



Figure 504 – General Condition of traffic island



Figure 505 – General Condition of traffic island



Figure 506 – General Condition of traffic island



Figure 507 – General Condition of traffic island



Figure 508 – General Condition of traffic island



Figure 509 – General Condition of traffic island



Figure 510 – General Condition of traffic island



Figure 511 – General Condition of traffic island



Figure 512 – General Condition of traffic island



Figure 513 – General Condition of traffic island



Figure 514 – Crack propagation through traffic island kerb



Figure 515 – General Condition of traffic island



Figure 516 – General Condition of road surface



Figure 517 – General Condition of road surface



Figure 518 – General Condition of road surface



Figure 519 – General Condition of road surface



Figure 520 – General Condition of road surface



Figure 521 – General Condition of road surface



Figure 522 – General Condition of road surface



Figure 523 – General Condition of road surface



Figure 524 – General Condition of road surface



Figure 525 – General Condition of road surface



Figure 526 – General Condition of road surface



Figure 527 – Loss of material through road surface



Figure 528 – General Condition of road surface



Figure 529 – General Condition of road surface



Figure 530 – General Condition of road surface



Figure 531 – General Condition of road surface



Figure 532 – General Condition of road surface



Figure 533 – General Condition of road surface



Figure 534 – General Condition of road surface



Figure 535 – General Condition of road surface



Figure 536 – General Condition of road surface



Figure 537 – General Condition of road surface



Figure 538 – General Condition of road surface



Figure 539 – General Condition of road surface



Figure 540 – General Condition of road surface



Figure 541 – General Condition of road surface



Figure 542 – General Condition of road surface



Figure 543 – General Condition of road surface



Figure 544 – General Condition of road surface



Figure 545 – General Condition of road surface



Figure 546 – General Condition of road surface



Figure 547 – General Condition of road surface



Figure 548 – General Condition of road surface



Figure 549 – General Condition of road surface



Figure 550 – General Condition of road surface



Figure 551 – General Condition of road surface



Figure 552 – General Condition of road surface



Figure 553 – General Condition of road surface



Figure 554 – General Condition of road surface



Figure 555 – General Condition of road surface



Figure 556 – General Condition of road surface



Figure 557 – General Condition of road surface



Figure 558 – General Condition of road surface



Figure 559 – General Condition of road surface



Figure 560 – General Condition of road surface



Figure 561 – General Condition of road surface



Figure 562 – General Condition of road surface



Figure 563 – General Condition of road surface



Figure 564 – General Condition of road surface



Figure 565 – General Condition of road surface



Figure 566 – General Condition of road surface



Figure 567 – General Condition of road surface



Figure 568 – General Condition of road surface



Figure 569 – General Condition of road surface



Figure 570 – General Condition of road surface



Figure 571 – General Condition of road surface



Figure 572 – General Condition of road surface



Figure 573 – General Condition of road surface



Figure 574 – General Condition of road surface



Figure 575 – General Condition of road surface



Figure 576 – General Condition of road surface



Figure 577 – General Condition of road surface



Figure 578 – General Condition of road surface



Figure 579 – General Condition of road surface



Figure 580 – General Condition of road surface



Figure 581 – General Condition of road surface



Figure 582 – General Condition of road surface



Figure 583 – General Condition of road surface



Figure 584 – General Condition of road surface



Figure 585 – Loss of material through road surface



Figure 586 – General Condition of road surface



Figure 587 – General Condition of road surface



Figure 588 – General Condition of road surface



Figure 589 – General Condition of road surface



Figure 590 – General Condition of road surface



Figure 591 – General Condition of road surface



Figure 592 – General Condition of road surface



Figure 593 – General Condition of service pit



Figure 594 – General Condition of service pit



Figure 595 – Loss of material through service pit



Figure 596 – Loss of material through service pit



Figure 597 – Loss of material through service pit



Figure 598 – Crack propagation through service pit



Figure 599 – General Condition of service pit



Figure 600 – General Condition of service pit



Figure 601 – Crack propagation through service pit



Figure 602 – Loss of material through service pit



Figure 603 – Loss of material through service pit



Figure 604 – General Condition of road surface



Figure 605 – General Condition of road surface



Figure 606 – General Condition of road surface



Figure 607 – General Condition of service pit



Figure 608 – Crack propagation through service pit



Figure 609 – Loss of material through service pit



Figure 610 – Loss of material through service pit



Figure 611 – General Condition of service pit



Figure 612 – General Condition of service pit



Figure 613 – General Condition of road surface



Figure 614 – General Condition of road surface



Figure 615 – General Condition of road surface



Figure 616 – General Condition of road surface



Figure 617 – General Condition of road surface



Figure 618 – General Condition of road surface



Figure 619 – General Condition of road surface



Figure 620 – General Condition of road surface



Figure 621 – General Condition of road surface



Figure 622 – General Condition of road surface



Figure 623 – General Condition of road surface



Figure 624 – General Condition of road surface



Figure 625 – General Condition of road surface



Figure 626 – General Condition of road surface



Figure 627 – General Condition of road surface



Figure 628 – General Condition of road surface



Figure 629 – General Condition of road surface



Figure 630 – General Condition of road surface



Figure 631 – General Condition of road surface



Figure 632 – General Condition of road surface



Figure 633 – General Condition of road surface



Figure 634 – General Condition of road surface



Figure 635 – General Condition of road surface



Figure 636 – General Condition of road surface



Figure 637 – General Condition of road surface



Figure 638 – General Condition of road surface



Figure 639 – Evidence of patchwork through road surface



Figure 640 – General Condition of road surface



Figure 641 – Evidence of patchwork through road surface



Figure 642 – General Condition of road surface



Figure 643 – General Condition of road surface



Figure 644 – General Condition of road surface



Figure 645 – General Condition of road surface



Figure 646 – General Condition of road surface



Figure 647 – General Condition of road surface



Figure 648 – General Condition of road surface



Figure 649 – General Condition of road surface



Figure 650 – General Condition of road surface



Figure 651 – General Condition of road surface



Figure 652 – General Condition of road surface



Figure 653 – General Condition of road surface



Figure 654 – General Condition of road surface



Figure 655 – General Condition of road surface



Figure 656 – General Condition of road surface



Figure 657 – General Condition of road surface



Figure 658 – General Condition of road surface



Figure 659 – General Condition of road surface



Figure 660 – General Condition of road surface



Figure 661 – General Condition of road surface



Figure 662 – General Condition of road surface



Figure 663 – General Condition of road surface



Figure 664 – General Condition of road surface



Figure 665 – General Condition of road surface



Figure 666 – General Condition of road surface



Figure 667 – General Condition of road surface



Figure 668 – General Condition of road surface



Figure 669 – General Condition of road surface



Figure 670 – General Condition of road surface



Figure 671 – General Condition of road surface



Figure 672 – General Condition of road surface



Figure 673 – General Condition of road surface



Figure 674 – General Condition of road surface



Figure 675 – General Condition of road surface



Figure 676 – General Condition of road surface



Figure 677 – General Condition of road surface



Figure 678 – General Condition of road surface



Figure 679 – General Condition of road surface



Figure 680 – General Condition of road surface



Figure 681 – General Condition of road surface



Figure 682 – Crack propagation through road surface

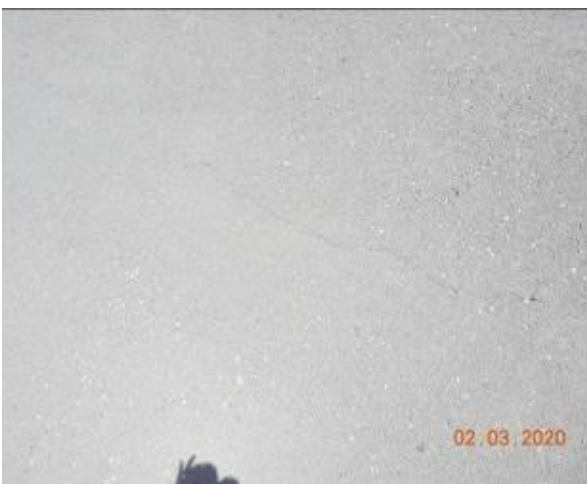


Figure 683 – Crack propagation through road surface



Figure 684 – General Condition of road surface



Figure 685 – General Condition of road surface



Figure 686 – General Condition of road surface



Figure 687 – General Condition of road surface



Figure 688 – General Condition of road surface



Figure 689 – General Condition of road surface



Figure 690 – General Condition of road surface



Figure 691 – General Condition of road surface



Figure 692 – General Condition of road surface



Figure 693 – General Condition of road surface



Figure 694 – General Condition of road surface



Figure 695 – General Condition of road surface



Figure 696 – General Condition of road surface



Figure 697 – General Condition of road surface



Figure 698 – General Condition of road surface



Figure 699 – General Condition of road surface



Figure 700 – General Condition of road surface



Figure 701 – General Condition of road surface



Figure 702 – General Condition of road surface



Figure 703 – General Condition of road surface



Figure 704 – General Condition of road surface



Figure 705 – General Condition of road surface



Figure 706 – General Condition of road surface



Figure 707 – General Condition of road surface



Figure 708 – General Condition of road surface



Figure 709 – General Condition of road surface



Figure 710 – General Condition of road surface



Figure 711 – General Condition of road surface



Figure 712 – General Condition of road surface



Figure 713 – General Condition of road surface



Figure 714 – General Condition of road surface



Figure 715 – General Condition of road surface



Figure 716 – General Condition of road surface



Figure 717 – General Condition of road surface



Figure 718 – General Condition of road surface



Figure 719 – General Condition of road surface



Figure 720 – General Condition of road surface



Figure 721 – General Condition of road surface



Figure 722 – General Condition of road surface



Figure 723 – General Condition of road surface



Figure 724 – General Condition of road surface



Figure 725 – General Condition of road surface



Figure 726 – General Condition of road surface



Figure 727 – Crack propagation through road surface



Figure 728 – General Condition of road surface



Figure 729 – General Condition of road surface



Figure 730 – General Condition of road surface



Figure 731 – General Condition of road surface



Figure 732 – General Condition of road surface



Figure 733 – General Condition of road surface



Figure 734 – General Condition of road surface



Figure 735 – General Condition of traffic island



Figure 736 – General Condition of traffic island



Figure 737 – Crack propagation through traffic island



Figure 738 – General Condition of traffic island



Figure 739 – General Condition of stormwater inlet pit



Figure 740 – General Condition of traffic island



Figure 741 – General Condition of traffic island



Figure 742 – Crack propagation through traffic island



Figure 743 – General Condition of traffic island



Figure 744 – General Condition of traffic island



Figure 745 – Loss of material through traffic island kerb



Figure 746 – General Condition of traffic island



Figure 747 – General Condition of traffic island



Figure 748 – General Condition of traffic island



Figure 749 – General Condition of traffic island



Figure 750 – General Condition of traffic island



Figure 751 – General Condition of traffic island



Figure 752 – General Condition of traffic island



Figure 753 – General Condition of traffic island



Figure 754 – Loss of material through traffic island kerb



Figure 755 – General Condition of traffic island



Figure 756 – Loss of material through traffic island



Figure 757 – General Condition of traffic island



Figure 758 – Loss of material through traffic island



Figure 759 – General Condition of footpath pavement



Figure 760 – General Condition of footpath pavement



Figure 761 – General Condition of footpath pavement



Figure 762 – General Condition of footpath pavement



Figure 763 – General Condition of footpath pavement



Figure 764 – Crack propagation through footpath pavement



Figure 765 – General Condition of footpath pavement



Figure 766 – General Condition of service pit



Figure 767 – General Condition of footpath pavement



Figure 768 – Loss of material through service pit



Figure 769 – Crack propagation through footpath pavement



Figure 770 – Crack propagation through footpath pavement



Figure 771 – Crack propagation through footpath pavement



Figure 772 – General Condition of footpath pavement

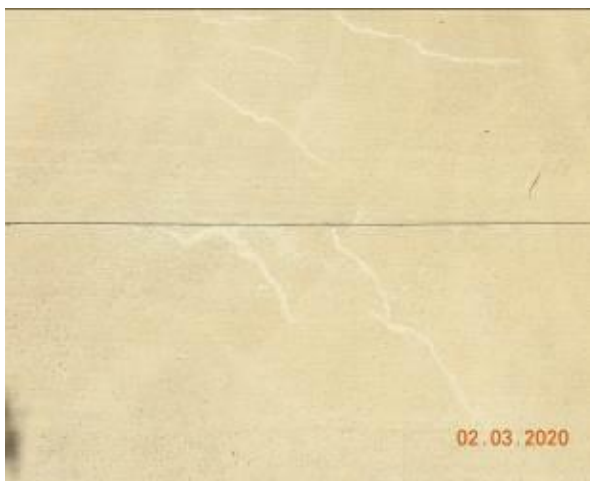


Figure 773 – Crack propagation through footpath pavement

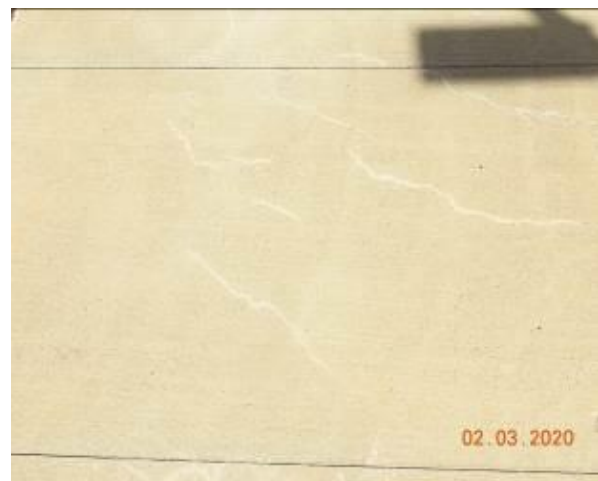


Figure 774 – Crack propagation through footpath pavement



Figure 775 – Crack propagation through footpath pavement



Figure 776 – General Condition of footpath pavement



Figure 777 – Crack propagation through footpath pavement



Figure 778 – Crack propagation through footpath pavement



Figure 779 – General Condition of footpath pavement



Figure 780 – General Condition of footpath pavement



Figure 781 – Crack propagation through footpath pavement



Figure 782 – General Condition of footpath pavement



Figure 783 – General Condition of footpath pavement



Figure 784 – Crack propagation through footpath pavement



Figure 785 – General Condition of footpath pavement



Figure 786 – Crack propagation through footpath pavement



Figure 787 – General Condition of footpath pavement



Figure 788 – Crack propagation through footpath pavement



Figure 789 – Crack propagation through footpath pavement



Figure 790 – General Condition of footpath pavement



Figure 791 – Crack propagation through footpath pavement



Figure 792 – Crack propagation through footpath pavement



Figure 793 – General Condition of footpath pavement



Figure 794 – General Condition of footpath pavement



Figure 795 – Crack propagation through footpath pavement



Figure 796 – Crack propagation through footpath pavement



Figure 797 – General Condition of footpath pavement



Figure 798 – General Condition of footpath pavement



Figure 799 – General Condition of footpath pavement



Figure 800 – General Condition of footpath pavement



Figure 801 – General Condition of footpath pavement



Figure 802 – General Condition of footpath pavement



Figure 803 – General Condition of footpath pavement



Figure 804 – General Condition of footpath pavement



Figure 805 – General Condition of footpath pavement



Figure 806 – Crack propagation through footpath pavement



Figure 807 – General Condition of footpath pavement



Figure 808 – General Condition of footpath pavement



Figure 809 – General Condition of footpath pavement



Figure 810 – Crack propagation through footpath pavement



Figure 811 – General Condition of footpath pavement



Figure 812 – General Condition of footpath pavement



Figure 813 – General Condition of footpath pavement



Figure 814 – General Condition of footpath pavement



Figure 815 – General Condition of footpath pavement



Figure 816 – General Condition of footpath pavement



Figure 817 – General Condition of footpath pavement



Figure 818 – General Condition of footpath pavement



Figure 819 – General Condition of footpath pavement



Figure 820 – General Condition of footpath pavement



Figure 821 – General Condition of footpath pavement



Figure 822 – General Condition of footpath pavement



Figure 823 – General Condition of footpath pavement



Figure 824 – General Condition of service pit



Figure 825 – Loss of material through service pit



Figure 826 – Crack propagation through service pit



Figure 827 – General Condition of footpath pavement



Figure 828 – General Condition of footpath pavement



Figure 829 – Crack propagation through footpath pavement



Figure 830 – General Condition of service pit



Figure 831 – General Condition of service pit



Figure 832 – General Condition of service pit



Figure 833 – Loss of material through service pit



Figure 834 – Loss of material through service pit



Figure 835 – General Condition of service pit



Figure 836 – General Condition of footpath pavement



Figure 837 – General Condition of footpath pavement



Figure 838 – General Condition of service pit



Figure 839 – General Condition of footpath pavement



Figure 840 – General Condition of footpath pavement



Figure 841 – General Condition of footpath pavement



Figure 842 – General Condition of service pit



Figure 843 – General Condition of service pit



Figure 844 – General Condition of footpath pavement



Figure 845 – General Condition of footpath pavement



Figure 846 – Crack propagation through footpath pavement



Figure 847 – General Condition of footpath pavement



Figure 848 – General Condition of footpath pavement



Figure 849 – Crack propagation through footpath pavement



Figure 850 – General Condition of footpath pavement



Figure 851 – General Condition of footpath pavement



Figure 852 – General Condition of footpath pavement



Figure 853 – General Condition of footpath pavement



Figure 854 – General Condition of footpath pavement



Figure 855 – Crack propagation through footpath pavement



Figure 856 – General Condition of footpath pavement



Figure 857 – General Condition of footpath pavement



Figure 858 – General Condition of footpath pavement



Figure 859 – General Condition of footpath pavement



Figure 860 – General Condition of footpath pavement



Figure 861 – General Condition of footpath pavement



Figure 862 – General Condition of footpath pavement



Figure 863 – General Condition of footpath pavement



Figure 864 – General Condition of footpath pavement



Figure 865 – General Condition of service pit



Figure 866 – General Condition of footpath pavement



Figure 867 – General Condition of footpath pavement



Figure 868 – General Condition of footpath pavement



Figure 869 – General Condition of footpath pavement



Figure 870 – General Condition of footpath pavement



Figure 871 – General Condition of driveway ramp



Figure 872 – General Condition of driveway ramp



Figure 873 – Crack propagation through driveway ramp



Figure 874 – Crack propagation through driveway ramp



Figure 875 – General Condition of driveway ramp



Figure 876 – General Condition of driveway ramp



Figure 877 – Crack propagation through driveway ramp



Figure 878 – General Condition of driveway ramp



Figure 879 – Crack propagation through driveway ramp



Figure 880 – General Condition of driveway ramp



Figure 881 – General Condition of driveway ramp



Figure 882 – General Condition of footpath pavement



Figure 883 – General Condition of footpath pavement



Figure 884 – General Condition of footpath pavement



Figure 885 – Loss of material through footpath pavement



Figure 886 – General Condition of nature strip



Figure 887 – General Condition of nature strip



Figure 888 – General Condition of nature strip



Figure 889 – General Condition of nature strip



Figure 890 – General Condition of nature strip



Figure 891 – General Condition of nature strip



Figure 892 – General Condition of nature strip



Figure 893 – General Condition of nature strip



Figure 894 – General Condition of nature strip



Figure 895 – General Condition of nature strip



Figure 896 – General Condition of nature strip



Figure 897 – General Condition of nature strip



Figure 898 – General Condition of service pit



Figure 899 – General Condition of nature strip



Figure 900 – General Condition of nature strip



Figure 901 – General Condition of nature strip



Figure 902 – General Condition of nature strip



Figure 903 – General Condition of nature strip



Figure 904 – General Condition of nature strip



Figure 905 – General Condition of nature strip



Figure 906 – General Condition of nature strip



Figure 907 – General Condition of nature strip



Figure 908 – General Condition of nature strip



Figure 909 – General Condition of nature strip



Figure 910 – General Condition of nature strip



Figure 911 – General Condition of nature strip



Figure 912 – General Condition of nature strip



Figure 913 – General Condition of nature strip



Figure 914 – General Condition of nature strip



Figure 915 – General Condition of nature strip



Figure 916 – General Condition of nature strip



Figure 917 – General Condition of nature strip



Figure 918 – General Condition of service pit



Figure 919 – Crack propagation through service pit



Figure 920 – Crack propagation through service pit



Figure 921 – General Condition of nature strip



Figure 922 – General Condition of nature strip



Figure 923 – General Condition of footpath pavement



Figure 924 – General Condition of footpath pavement



Figure 925 – General Condition of footpath pavement



Figure 926 – General Condition of footpath pavement



Figure 927 – General Condition of footpath pavement



Figure 928 – General Condition of footpath pavement



Figure 929 – General Condition of kerb and gutter



Figure 930 – General Condition of kerb and gutter



Figure 931 – General Condition of kerb and gutter



Figure 932 – Crack propagation and loss of material through kerb and gutter



Figure 933 – General Condition of kerb and gutter



Figure 934 – General Condition of kerb and gutter



Figure 935 – General Condition of kerb and gutter

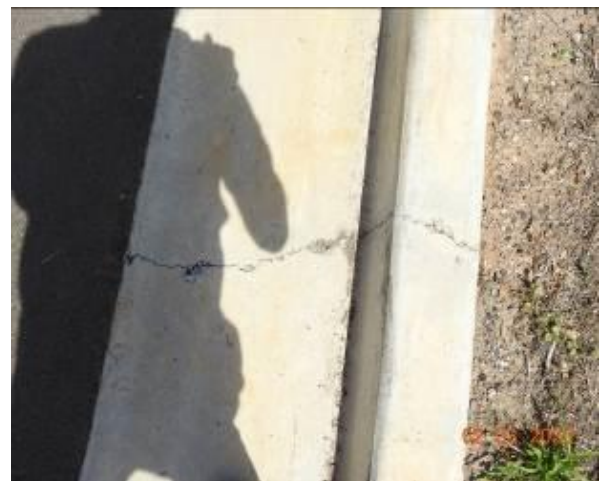


Figure 936 – Crack propagation through kerb and gutter



Figure 937 – Loss of material through kerb



Figure 938 – General Condition of stormwater inlet pit



Figure 939 – General Condition of kerb and gutter



Figure 940 – Crack propagation and loss of material through kerb and gutter



Figure 941 – General Condition of kerb and gutter



Figure 942 – Crack propagation and loss of material through kerb and gutter



Figure 943 – General Condition of kerb and gutter



Figure 945 – General Condition of kerb and gutter



Figure 947 – General Condition of stormwater inlet pit



Figure 944 – Loss of material through gutter



Figure 946 – Crack propagation and loss of material through kerb and gutter



Figure 948 – Crack propagation through stormwater inlet pit



Figure 949 – General Condition of kerb and gutter



Figure 950 – Crack propagation through kerb and gutter



Figure 951 – General Condition of kerb and gutter



Figure 952 – General Condition of kerb and gutter



Figure 953 – General Condition of kerb and gutter



Figure 954 – Crack propagation through kerb and gutter



Figure 955 – General Condition of kerb and gutter



Figure 956 – Crack propagation through kerb and gutter



Figure 957 – General Condition of kerb and gutter



Figure 958 – General Condition of kerb and gutter



Figure 959 – General Condition of kerb and gutter



Figure 960 – Crack propagation through kerb and gutter



Figure 961 – General Condition of kerb and gutter



Figure 962 – General Condition of kerb and gutter



Figure 963 – General Condition of kerb and gutter



Figure 964 – Crack propagation through kerb and gutter



Figure 965 – General Condition of kerb and gutter



Figure 966 – Crack propagation through gutter



Figure 967 – General Condition of kerb and gutter



Figure 968 – General Condition of kerb and gutter



Figure 969 – General Condition of kerb and gutter



Figure 970 – Loss of material through kerb and gutter



Figure 971 – General Condition of stormwater inlet pit



Figure 972 – General Condition of kerb and gutter



Figure 973 – Crack propagation through kerb and gutter



Figure 974 – General Condition of kerb and gutter



Figure 975 – General Condition of kerb and gutter



Figure 976 – General Condition of kerb and gutter



Figure 977 – Crack propagation through kerb and gutter



Figure 978 – General Condition of kerb and gutter



Figure 979 – Crack propagation through kerb and gutter



Figure 980 – General Condition of kerb and gutter



Figure 981 – General Condition of kerb and gutter



Figure 982 – General Condition of kerb and gutter



Figure 983 – General Condition of kerb and gutter



Figure 984 – Crack propagation through kerb and gutter



Figure 985 – General Condition of kerb and gutter



Figure 986 – General Condition of kerb and gutter



Figure 987 – General Condition of kerb and gutter



Figure 988 – General Condition of kerb and gutter



Figure 989 – General Condition of kerb and gutter



Figure 990 – General Condition of kerb and gutter



Figure 991 – General Condition of kerb and gutter



Figure 992 – Crack propagation and loss of material through kerb and gutter



Figure 993 – General Condition of stormwater inlet pit



Figure 994 – Crack propagation and Evidence of patchwork through stormwater inlet pit



Figure 995 – Crack propagation through stormwater inlet pit



Figure 996 – General Condition of kerb and gutter



Figure 997 – General Condition of kerb and gutter



Figure 998 – General Condition of kerb and gutter



Figure 999 – Crack propagation through kerb and gutter



Figure 1000 – General Condition of kerb and gutter

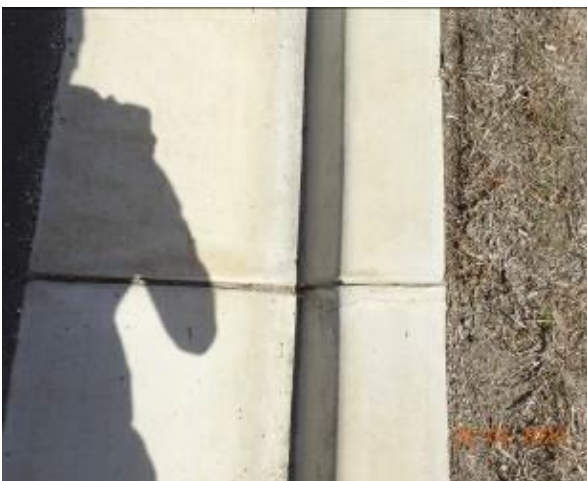


Figure 1001 – Crack propagation through kerb and gutter



Figure 1002 – Crack propagation through kerb and gutter



Figure 1003 – General Condition of kerb and gutter



Figure 1004 – Crack propagation through kerb and gutter



Figure 1005 – General Condition of kerb and gutter



Figure 1006 – Loss of material through kerb



Figure 1007 – General Condition of kerb and gutter



Figure 1008 – Crack propagation through kerb



Figure 1009 – Crack propagation through kerb



Figure 1010 – Crack propagation through kerb



Figure 1011 – Crack propagation through kerb and gutter



Figure 1012 – General Condition of kerb and gutter



Figure 1013 – Crack propagation through kerb and gutter



Figure 1014 – General Condition of kerb and gutter



Figure 1015 – Crack propagation through kerb and gutter



Figure 1016 – General Condition of kerb and gutter



Figure 1017 – Crack propagation through kerb and gutter



Figure 1018 – General Condition of kerb and gutter



Figure 1019 – General Condition of kerb and gutter



Figure 1020 – Crack propagation through kerb and gutter



Figure 1021 – General Condition of kerb and gutter



Figure 1022 – Crack propagation through kerb and gutter



Figure 1023 – General Condition of kerb and gutter

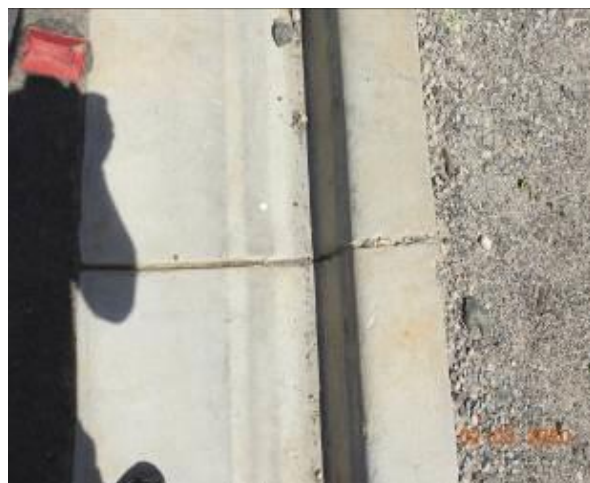


Figure 1024 – Loss of material through kerb



Figure 1025 – General Condition of kerb and gutter

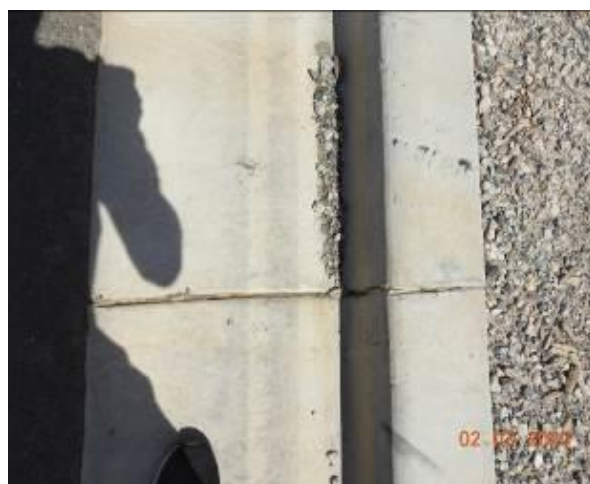


Figure 1026 – Crack propagation through kerb and gutter



Figure 1027 – General Condition of kerb and gutter



Figure 1028 – Loss of material through kerb and gutter



Figure 1029 – General Condition of stormwater inlet pit



Figure 1030 – General Condition of kerb and gutter



Figure 1031 – General Condition of layback and gutter



Figure 1032 – Loss of material through kerb and gutter



Figure 1033 – General Condition of gutter



Figure 1034 – Crack propagation through gutter



Figure 1035 – General Condition of gutter



Figure 1036 – Crack propagation through kerb and gutter



Figure 1037 – General Condition of kerb and gutter



Figure 1038 – Crack propagation through kerb and gutter



Figure 1039 – Crack propagation through kerb and gutter



Figure 1040 – General Condition of kerb and gutter



Figure 1041 – General Condition of kerb and gutter



Figure 1042 – General Condition of kerb and gutter



Figure 1043 – Crack propagation through kerb and gutter



Figure 1044 – General Condition of kerb and gutter



Figure 1045 – Crack propagation through kerb and gutter



Figure 1046 – General Condition of kerb and gutter



Figure 1047 – Crack propagation through kerb and gutter



Figure 1048 – General Condition of kerb and gutter



Figure 1049 – General Condition of kerb and gutter



Figure 1050 – Crack propagation and loss of material through kerb and gutter



Figure 1051 – General Condition of kerb and gutter



Figure 1052 – General Condition of stormwater inlet pit



Figure 1053 – General Condition of kerb and gutter



Figure 1054 – General Condition of kerb and gutter



Figure 1055 – General Condition of kerb and gutter



Figure 1056 – General Condition of kerb and gutter



Figure 1057 – General Condition of stormwater inlet pit



Figure 1058 – General Condition of kerb and gutter



Figure 1059 – General Condition of kerb and gutter



Figure 1060 – General Condition of kerb and gutter



Figure 1061 – General Condition of kerb and gutter



Figure 1062 – General Condition of kerb and gutter



Figure 1063 – Crack propagation through gutter



Figure 1064 – General Condition of kerb and gutter



Figure 1065 – General Condition of stormwater inlet pit



Figure 1066 – Crack propagation through stormwater inlet pit



Figure 1067 – Loss of material through stormwater inlet pit



Figure 1068 – General Condition of kerb and gutter



Figure 1069 – Crack propagation through kerb and gutter



Figure 1070 – General Condition of stormwater inlet pit



Figure 1071 – General Condition of kerb and gutter



Figure 1072 – General Condition of kerb and gutter



Figure 1073 – General Condition of kerb and gutter



Figure 1074 – Crack propagation through kerb



Figure 1075 – General Condition of kerb and gutter



Figure 1076 – General Condition of kerb and gutter



Figure 1077 – General Condition of kerb and gutter



Figure 1078 – General Condition of kerb and gutter



Figure 1079 – General Condition of stormwater inlet pit



Figure 1080 – Loss of material through stormwater inlet pit



Figure 1081 – Loss of material through kerb



Figure 1082 – General Condition of kerb and gutter



Figure 1083 – General Condition of kerb and gutter



Figure 1084 – General Condition of kerb and gutter



Figure 1085 – General Condition of kerb and gutter



Figure 1086 – General Condition of kerb and gutter



Figure 1087 – Crack propagation through kerb



Figure 1088 – General Condition of kerb and gutter



Figure 1089 – General Condition of kerb and gutter



Figure 1090 – General Condition of kerb and gutter



Figure 1091 – General Condition of kerb and gutter



Figure 1092 – General Condition of kerb and gutter



Figure 1093 – General Condition of kerb and gutter



Figure 1094 – General Condition of stormwater inlet pit



Figure 1095 – Crack propagation through stormwater inlet pit



Figure 1096 – Crack propagation through stormwater inlet pit



Figure 1097 – Crack propagation through stormwater inlet pit



Figure 1098 – General Condition of kerb and gutter



Figure 1099 – Crack propagation through kerb and gutter



Figure 1100 – General Condition of kerb and gutter



Figure 1101 – General Condition of kerb and gutter



Figure 1102 – General Condition of kerb and gutter



Figure 1103 – General Condition of kerb and gutter

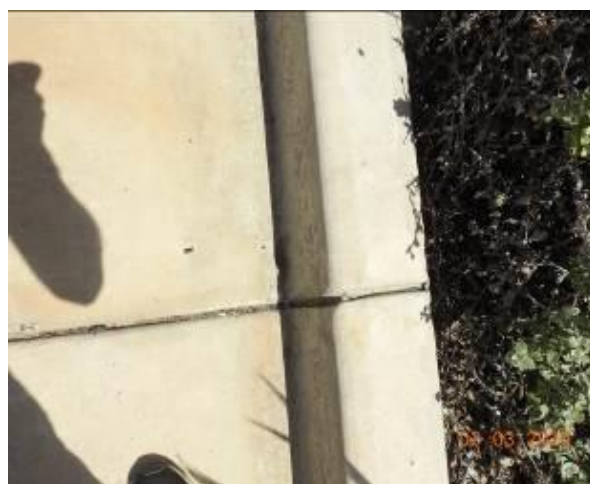


Figure 1104 – Crack propagation through kerb and gutter



Figure 1105 – General Condition of kerb and gutter



Figure 1106 – General Condition of kerb and gutter



Figure 1107 – General Condition of kerb and gutter



Figure 1108 – Crack propagation through kerb and gutter



Figure 1109 – General Condition of kerb and gutter



Figure 1110 – General Condition of kerb and gutter



Figure 1111 – General Condition of kerb and gutter



Figure 1112 – General Condition of stormwater inlet pit



Figure 1113 – General Condition of kerb and gutter



Figure 1114 – Crack propagation through kerb and gutter



Figure 1115 – General Condition of kerb and gutter



Figure 1116 – General Condition of kerb and gutter



Figure 1117 – General Condition of kerb and gutter



Figure 1118 – Crack propagation through kerb and gutter



Figure 1119 – General Condition of kerb and gutter



Figure 1120 – Crack propagation through kerb and gutter



Figure 1121 – General Condition of kerb and gutter



Figure 1122 – Crack propagation and loss of material through kerb and gutter



Figure 1123 – Crack propagation through kerb and gutter



Figure 1124 – Crack propagation through kerb and gutter



Figure 1125 – General Condition of kerb and gutter



Figure 1126 – Crack propagation and loss of material through kerb and gutter



Figure 1127 – General Condition of kerb and gutter



Figure 1128 – General Condition of kerb and gutter



Figure 1129 – General Condition of kerb and gutter



Figure 1130 – General Condition of kerb and gutter



Figure 1131 – General Condition of kerb and gutter



Figure 1132 – General Condition of street sign



Figure 1133 – General Condition of street sign



Figure 1134 – General Condition of lamp post
Identification N.922707



Figure 1135 – General Condition of lamp post



Figure 1136 – General Condition of street sign



Figure 1137 – General Condition of street sign



Figure 1138 – General Condition of public bench



Figure 1139 – General Condition of public bench



Figure 1140 – General Condition of lamp post
Identification N.922706



Figure 1141 – General Condition of lamp post



Figure 1142 – General Condition of street sign



Figure 1143 – General Condition of street sign



Figure 1144 – General Condition of street sign



Figure 1145 – General Condition of street sign



Figure 1146 – General Condition of lamp post
Identification N.922705



Figure 1147 – General Condition of lamp post



Figure 1148 – General Condition of street sign



Figure 1149 – General Condition of public bench



Figure 1150 – General Condition of public bench



Figure 1151 – General Condition of street sign



Figure 1152 – General Condition of public bench



Figure 1153 – General Condition of public bench



Figure 1154 – General Condition of electricity box



Figure 1155 – General Condition of lamp post
Identification N.922704



Figure 1156 – General Condition of lamp post



Figure 1157 – General Condition of street sign



Figure 1158 – General Condition of street sign



Figure 1159 – General Condition of lamp post
Identification N.922708



Figure 1160 – General Condition of lamp post



Figure 1161 – General Condition of street sign



Figure 1162 – General Condition of street sign



Figure 1163 – General Condition of street sign



Figure 1164 – General Condition of street sign



Figure 1165 – General Condition of lamp post
Identification N.922709



Figure 1166 – General Condition of lamp post



Figure 1167 – General Condition of street sign



Figure 1168 – General Condition of street sign



Figure 1169 – General Condition of lamp post
Identification N.922710



Figure 1170 – General Condition of lamp post



Figure 1171 – General Condition of street sign



Figure 1172 – General Condition of street sign



Figure 1173 – General Condition of lamp post
Identification N.922711



Figure 1174 – General Condition of lamp post



Figure 1175 – General Condition of street sign



Figure 1176 – General Condition of street sign



Figure 1177 – General Condition of traffic island bollard



Figure 1178 – General Condition of traffic island bollard



Figure 1179 – General Condition of street sign



Figure 1180 – General Condition of lamp post Identification N.922623



Figure 1181 – General Condition of lamp post



Comments

The section of Conferta Avenue which is associated with the subject site was inspected and photographic evidence compiled in order to depict the condition of the council assets along this particular stretch of road prior to the commencement of any work at the subject site.

The road surface of Conferta Avenue at the time of the inspection was in a good condition with evidence of crack propagation, material loss and patchwork. In addition, cases of cracking presented among the driveway pavement.

At the same time the kerb, gutter and footpath which accompany the road way were also inspected. At the time of this inspection they were found to be in a good condition. There was evidence of Crack propagation and loss of material through the kerb, gutter and footpath.

The condition of the lamp posts, electricity boxes, public benches, stormwater inlet pits, traffic islands, traffic island bollards, street signs and service pits was also inspected and were determined to be in a reasonable condition. Cases of crack propagation and loss of material through service pits and stormwater inlet pits as well as cases of patchwork presented among the stormwater inlet pits

Refer to Appendix (B) for photographic records of the above.



Appendix C

Cudgrong Road Council Assets





Figure 1182 – The following images display condition of Cudgrong Road Council Assets



Figure 1183 – General Condition of footpath pavement



Figure 1184 – General Condition of footpath pavement



Figure 1185 – General Condition of footpath pavement



Figure 1186 – General Condition of footpath pavement



Figure 1187 – General Condition of footpath pavement



Figure 1188 – General Condition of footpath pavement



Figure 1189 – General Condition of service pit



Figure 1190 – General Condition of footpath pavement



Figure 1191 – General Condition of footpath pavement



Figure 1192 – General Condition of service pit



Figure 1193 – General Condition of footpath pavement



Figure 1194 – General Condition of footpath pavement



Figure 1195 – General Condition of footpath pavement



Figure 1196 – General Condition of footpath pavement



Figure 1197 – General Condition of footpath pavement



Figure 1198 – General Condition of footpath pavement



Figure 1199 – General Condition of service pit



Figure 1200 – General Condition of service pit



Figure 1201 – General Condition of footpath pavement



Figure 1202 – General Condition of service pit



Figure 1203 – General Condition of footpath pavement



Figure 1204 – General Condition of footpath pavement



Figure 1205 – General Condition of service pit



Figure 1206 – General Condition of service pit



Figure 1207 – General Condition of footpath pavement



Figure 1208 – General Condition of footpath pavement



Figure 1209 – General Condition of service pit



Figure 1210 – General Condition of service pit



Figure 1211 – General Condition of footpath pavement



Figure 1212 – General Condition of footpath pavement



Figure 1213 – General Condition of footpath pavement



Figure 1214 – General Condition of footpath pavement



Figure 1215 – General Condition of kerb and gutter



Figure 1216 – General Condition of kerb and gutter



Figure 1217 – Loss of material through kerb and gutter



Figure 1218 – General Condition of stormwater inlet pit



Figure 1219 – General Condition of kerb and gutter



Figure 1220 – Loss of material through kerb and gutter



Figure 1221 – General Condition of kerb and gutter



Figure 1222 – Loss of material through kerb and gutter



Figure 1223 – General Condition of stormwater inlet pit



Figure 1224 – General Condition of kerb and gutter



Figure 1225 – Crack propagation through kerb and gutter



Figure 1226 – Crack propagation through kerb and gutter



Figure 1227 – Crack propagation through kerb and gutter



Figure 1228 – General Condition of stormwater inlet pit



Figure 1229 – General Condition of kerb and gutter



Figure 1230 – Loss of material through kerb and gutter



Figure 1231 – Crack propagation through kerb



Figure 1232 – General Condition of kerb and gutter



Figure 1233 – Crack propagation through kerb



Figure 1234 – Crack propagation through kerb and gutter



Figure 1235 – Crack propagation through kerb and gutter



Figure 1236 – General Condition of stormwater inlet pit



Figure 1237 – General Condition of kerb and gutter



Figure 1238 – Crack propagation through kerb and gutter



Figure 1239 – Crack propagation through kerb and gutter



Figure 1240 – Crack propagation through kerb and gutter



Figure 1241 – General Condition of kerb and gutter



Figure 1242 – Crack propagation through kerb and gutter



Figure 1243 – Crack propagation through kerb and gutter



Figure 1244 – General Condition of stormwater inlet pit



Figure 1245 – General Condition of kerb and gutter



Figure 1246 – Crack propagation through kerb



Figure 1247 – Crack propagation through kerb



Figure 1248 – General Condition of kerb and gutter



Figure 1249 – Loss of material through kerb

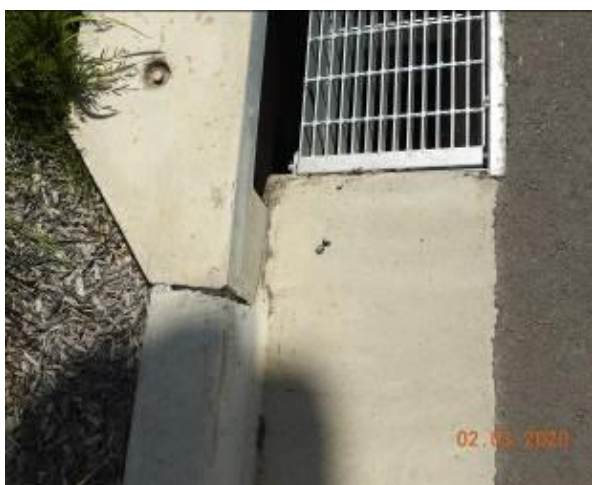


Figure 1250 – Crack propagation through kerb



Figure 1251 – General Condition of stormwater inlet pit



Figure 1252 – Crack propagation through kerb



Figure 1253 – General Condition of kerb and gutter



Figure 1254 – General Condition of stormwater inlet pit



Figure 1255 – General Condition of kerb and gutter



Figure 1256 – Crack propagation through kerb and gutter



Figure 1257 – General Condition of stormwater inlet pit



Figure 1258 – General Condition of kerb and gutter



Figure 1259 – General Condition of kerb and gutter



Figure 1260 – Crack propagation through kerb and gutter



Figure 1261 – General Condition of stormwater inlet pit



Figure 1262 – General Condition of kerb and gutter



Figure 1263 – Crack propagation through kerb and gutter



Figure 1264 – Crack propagation through kerb and gutter



Figure 1265 – Crack propagation through kerb and gutter



Figure 1266 – General Condition of kerb and gutter



Figure 1267 – Crack propagation through kerb and gutter



Figure 1268 – Crack propagation through kerb and gutter



Figure 1269 – Crack propagation through kerb and gutter



Figure 1270 – Crack propagation through kerb and gutter



Figure 1271 – Crack propagation through kerb and gutter



Figure 1272 – General Condition of kerb and gutter



Figure 1273 – General Condition of stormwater inlet pit



Figure 1274 – General Condition of kerb and gutter



Figure 1275 – General Condition of kerb and gutter



Figure 1276 – General Condition of kerb and gutter



Figure 1277 – Crack propagation through stormwater inlet pit



Figure 1278 – General Condition of stormwater inlet pit



Figure 1279 – General Condition of kerb and gutter



Figure 1280 – General Condition of kerb and gutter



Figure 1281 – General Condition of kerb and gutter



Figure 1282 – General Condition of road surface



Figure 1283 – General Condition of road surface



Figure 1284 – General Condition of road surface



Figure 1285 – General Condition of road surface



Figure 1286 – General Condition of road surface



Figure 1287 – General Condition of road surface



Figure 1288 – General Condition of road surface



Figure 1289 – General Condition of road surface



Figure 1290 – General Condition of road surface



Figure 1291 – General Condition of road surface



Figure 1292 – General Condition of road surface



Figure 1293 – General Condition of road surface



Figure 1294 – General Condition of road surface



Figure 1295 – General Condition of road surface



Figure 1296 – General Condition of road surface



Figure 1297 – General Condition of road surface



Figure 1298 – General Condition of road surface



Figure 1299 – General Condition of road surface



Figure 1300 – General Condition of road surface



Figure 1301 – General Condition of street sign



Figure 1302 – General Condition of street sign



Figure 1303 – General Condition of lamp post



Figure 1304 – General Condition of street sign



Figure 1305 – General Condition of street sign



Figure 1306 – General Condition of street sign



Figure 1307 – General Condition of lamp post
Identification No.835911



Figure 1308 – General Condition of lamp post



Figure 1309 – General Condition of lamp post
Identification No.922619



Figure 1310 – General Condition of lamp post



Figure 1311 – General Condition of street sign



Figure 1312 – General Condition of lamp post
Identification No.922621



Figure 1313 – General Condition of lamp post



Figure 1314 – General Condition of lamp post
Identification No.922625



Figure 1315 – General Condition of lamp post



Figure 1316 – General Condition of street sign



Figure 1317 – General Condition of lamp post
Identification No.922627



Figure 1318 – General Condition of lamp post



Figure 1319 – General Condition of traffic light /
street sign



Figure 1320 – General Condition of lamp post
Identification No.922629



Figure 1321 – General Condition of lamp post



Figure 1322 – General Condition of lamp post
Identification No.922633



Figure 1323 – General Condition of lamp post



Comments

The section of Cudgrong Road which is associated with the subject site was inspected and photographic evidence compiled in order to depict the condition of the council assets along this particular stretch of road prior to the commencement of any work at the subject site.

The road surface of Cudgrong Road at the time of the inspection was in a good condition with no major defects.

At the same time the kerb, gutter and footpath which accompany the road way were also inspected. At the time of this inspection they were found to be in a good condition. There was evidence of cracking and material loss through the kerb and gutter. The footpath pavement was in a good condition with no major defects.

The condition of the lamp posts, stormwater inlet pits, street signs and service pits was also inspected and were determined to be in a reasonable condition. With cases of crack propagation through stormwater inlet pit

Refer to Appendix (C) for photographic records of the above.



Appendix D

Schofields Road Council Assets





Figure 1324 – The following images display condition of Schofields Road Council Assets



Figure 1325 – General Condition of footpath pavement



Figure 1326 – General Condition of footpath pavement



Figure 1327 – General Condition of footpath pavement



Figure 1328 – General Condition of footpath pavement



Figure 1329 – General Condition of service pit



Figure 1330 – General Condition of footpath pavement



Figure 1331 – General Condition of footpath pavement



Figure 1332 – General Condition of footpath pavement



Figure 1333 – General Condition of footpath pavement



Figure 1334 – General Condition of footpath pavement



Figure 1335 – General Condition of footpath pavement



Figure 1336 – General Condition of footpath pavement



Figure 1337 – General Condition of footpath pavement



Figure 1338 – General Condition of footpath pavement



Figure 1339 – General Condition of footpath pavement



Figure 1340 – General Condition of footpath pavement



Figure 1341 – General Condition of footpath pavement



Figure 1342 – General Condition of footpath pavement



Figure 1343 – General Condition of footpath pavement



Figure 1344 – General Condition of footpath pavement



Figure 1345 – General Condition of footpath pavement



Figure 1346 – General Condition of footpath pavement



Figure 1347 – General Condition of footpath pavement



Figure 1348 – General Condition of footpath pavement



Figure 1349 – General Condition of footpath pavement



Figure 1350 – General Condition of footpath pavement



Figure 1351 – General Condition of service pit



Figure 1352 – General Condition of footpath pavement



Figure 1353 – General Condition of footpath pavement



Figure 1354 – General Condition of footpath pavement



Figure 1355 – General Condition of footpath pavement



Figure 1356 – General Condition of footpath pavement



Figure 1357 – General Condition of footpath pavement



Figure 1358 – General Condition of footpath pavement



Figure 1359 – General Condition of footpath pavement



Figure 1360 – General Condition of footpath pavement



Figure 1361 – General Condition of footpath pavement



Figure 1362 – General Condition of footpath pavement



Figure 1363 – General Condition of footpath pavement



Figure 1364 – General Condition of footpath pavement



Figure 1365 – General Condition of footpath pavement



Figure 1366 – General Condition of footpath pavement



Figure 1367 – General Condition of footpath pavement



Figure 1368 – General Condition of footpath pavement



Figure 1369 – General Condition of footpath pavement



Figure 1370 – General Condition of footpath pavement



Figure 1371 – Evidence of patchwork through footpath pavement



Figure 1372 – General Condition of footpath pavement



Figure 1373 – General Condition of footpath pavement



Figure 1374 – General Condition of footpath pavement



Figure 1375 – General Condition of footpath pavement



Figure 1376 – General Condition of footpath pavement



Figure 1377 – General Condition of footpath pavement



Figure 1378 – General Condition of footpath pavement



Figure 1379 – General Condition of footpath pavement



Figure 1380 – General Condition of footpath pavement



Figure 1381 – General Condition of footpath pavement



Figure 1382 – General Condition of footpath pavement



Figure 1383 – General Condition of footpath pavement



Figure 1384 – General Condition of service pit



Figure 1385 – General Condition of footpath pavement



Figure 1386 – General Condition of footpath pavement



Figure 1387 – General Condition of footpath pavement



Figure 1388 – General Condition of footpath pavement



Figure 1389 – General Condition of footpath pavement



Figure 1390 – General Condition of footpath pavement



Figure 1391 – General Condition of footpath pavement



Figure 1392 – General Condition of footpath pavement



Figure 1393 – Evidence of patchwork through footpath pavement



Figure 1394 – Crack propagation through footpath pavement



Figure 1395 – Crack propagation through footpath pavement



Figure 1396 – Crack propagation through footpath pavement



Figure 1397 – Crack propagation through footpath pavement



Figure 1398 – Crack propagation through footpath pavement



Figure 1399 – General Condition of footpath pavement



Figure 1400 – General Condition of footpath pavement



Figure 1401 – General Condition of footpath pavement



Figure 1402 – General Condition of footpath pavement



Figure 1403 – General Condition of footpath pavement



Figure 1404 – General Condition of footpath pavement



Figure 1405 – General Condition of footpath pavement



Figure 1406 – General Condition of footpath pavement



Figure 1407 – General Condition of footpath pavement



Figure 1408 – General Condition of footpath pavement



Figure 1409 – General Condition of footpath pavement



Figure 1410 – General Condition of footpath pavement



Figure 1411 – General Condition of footpath pavement



Figure 1412 – General Condition of footpath pavement



Figure 1413 – Evidence of patchwork through footpath pavement



Figure 1414 – General Condition of footpath pavement



Figure 1415 – General Condition of footpath pavement



Figure 1416 – General Condition of footpath pavement



Figure 1417 – General Condition of footpath pavement



Figure 1418 – General Condition of footpath pavement



Figure 1419 – General Condition of footpath pavement



Figure 1420 – General Condition of service pit



Figure 1421 – General Condition of footpath pavement



Figure 1422 – General Condition of footpath pavement



Figure 1423 – General Condition of footpath pavement



Figure 1424 – General Condition of footpath pavement



Figure 1425 – General Condition of footpath pavement



Figure 1426 – General Condition of footpath pavement



Figure 1427 – General Condition of footpath pavement



Figure 1428 – General Condition of footpath pavement



Figure 1429 – General Condition of footpath pavement



Figure 1430 – General Condition of footpath pavement



Figure 1431 – General Condition of footpath pavement



Figure 1432 – General Condition of footpath pavement



Figure 1433 – General Condition of footpath pavement



Figure 1434 – General Condition of footpath pavement



Figure 1435 – General Condition of footpath pavement



Figure 1436 – General Condition of footpath pavement



Figure 1437 – General Condition of footpath pavement



Figure 1438 – General Condition of service pit



Figure 1439 – General Condition of footpath pavement



Figure 1440 – General Condition of service pit



Figure 1441 – General Condition of footpath pavement



Figure 1442 – General Condition of service pit



Figure 1443 – General Condition of footpath pavement



Figure 1444 – General Condition of footpath pavement



Figure 1445 – Crack propagation and loss of material through footpath pavement



Figure 1446 – Crack propagation through footpath pavement



Figure 1447 – General Condition of footpath pavement



Figure 1448 – General Condition of service pit



Figure 1449 – General Condition of footpath pavement



Figure 1450 – General Condition of footpath pavement



Figure 1451 – General Condition of footpath pavement



Figure 1452 – General Condition of footpath pavement



Figure 1453 – General Condition of footpath pavement



Figure 1454 – General Condition of footpath pavement



Figure 1455 – General Condition of footpath pavement



Figure 1456 – Crack propagation through service pit



Figure 1457 – Crack propagation through footpath pavement



Figure 1458 – General Condition of footpath pavement



Figure 1459 – Crack propagation through footpath pavement



Figure 1460 – Crack propagation through footpath pavement



Figure 1461 – General Condition of footpath pavement



Figure 1462 – General Condition of footpath pavement



Figure 1463 – General Condition of footpath pavement



Figure 1464 – General Condition of footpath pavement



Figure 1465 – General Condition of General Condition of service pit



Figure 1466 – Crack propagation through footpath pavement



Figure 1467 – General Condition of footpath pavement



Figure 1468 – Crack propagation through footpath pavement



Figure 1469 – General Condition of footpath pavement



Figure 1470 – General Condition of footpath pavement



Figure 1471 – Crack propagation through footpath pavement



Figure 1472 – General Condition of footpath pavement



Figure 1473 – General Condition of road surface



Figure 1474 – General Condition of traffic island



Figure 1475 – Crack propagation through traffic island footpath pavement



Figure 1476 – General Condition of traffic island



Figure 1477 – General Condition of footpath pavement



Figure 1478 – General Condition of footpath pavement



Figure 1479 – Crack propagation through footpath pavement



Figure 1480 – General Condition of footpath pavement



Figure 1481 – General Condition of footpath pavement



Figure 1482 – General Condition of footpath pavement



Figure 1483 – Crack propagation through footpath pavement



Figure 1484 – General Condition of service pit



Figure 1485 – General Condition of footpath pavement



Figure 1486 – Crack propagation through footpath pavement



Figure 1487 – General Condition of footpath pavement



Figure 1488 – General Condition of service pit



Figure 1489 – Crack propagation through footpath pavement



Figure 1490 – General Condition of footpath pavement



Figure 1491 – General Condition of footpath pavement



Figure 1492 – General Condition of footpath pavement



Figure 1493 – General Condition of footpath pavement



Figure 1494 – General Condition of footpath pavement



Figure 1495 – General Condition of footpath pavement



Figure 1496 – General Condition of footpath pavement



Figure 1497 – General Condition of footpath pavement



Figure 1498 – General Condition of kerb and gutter



Figure 1499 – Crack propagation through kerb



Figure 1500 – General Condition of stormwater inlet pit



Figure 1501 – General Condition of kerb and gutter



Figure 1502 – General Condition of kerb and gutter



Figure 1503 – Crack propagation through kerb



Figure 1504 – General Condition of kerb and gutter



Figure 1505 – General Condition of kerb and gutter



Figure 1506 – Loss of material through kerb



Figure 1507 – General Condition of kerb and gutter



Figure 1508 – General Condition of kerb



Figure 1509 – Crack propagation through kerb



Figure 1510 – General Condition of kerb



Figure 1511 – Crack propagation through kerb



Figure 1512 – General Condition of stormwater inlet pit



Figure 1513 – General Condition of layback



Figure 1514 – Crack propagation through layback



Figure 1515 – Crack propagation through layback



Figure 1516 – General Condition of layback



Figure 1517 – General Condition of kerb



Figure 1518 – General Condition of kerb



Figure 1519 – General Condition of kerb



Figure 1520 – Crack propagation through layback



Figure 1521 – General Condition of layback



Figure 1522 – Crack propagation and loss of material through layback



Figure 1523 – Crack propagation through layback



Figure 1524 – Crack propagation through layback



Figure 1525 – General Condition of kerb



Figure 1526 – Crack propagation and loss of material through kerb



Figure 1527 – General Condition of kerb



Figure 1528 – General Condition of stormwater inlet pit



Figure 1529 – Loss of material through kerb



Figure 1530 – General Condition of kerb



Figure 1531 – General Condition of kerb



Figure 1532 – Crack propagation and loss of material through kerb



Figure 1533 – Crack propagation through kerb



Figure 1534 – General Condition of traffic island



Figure 1535 – Crack propagation through kerb



Figure 1536 – General Condition of kerb



Figure 1537 – Loss of material through kerb



Figure 1538 – General Condition of kerb



Figure 1539 – Loss of material through kerb



Figure 1540 – General Condition of stormwater inlet pit



Figure 1541 – General Condition of layback



Figure 1542 – General Condition of kerb



Figure 1543 – Crack propagation through kerb



Figure 1544 – General Condition of kerb



Figure 1545 – General Condition of kerb



Figure 1546 – Loss of material through kerb



Figure 1547 – Crack propagation through kerb



Figure 1548 – General Condition of kerb



Figure 1549 – General Condition of kerb



Figure 1550 – General Condition of kerb



Figure 1551 – Crack propagation through kerb



Figure 1552 – General Condition of layback



Figure 1553 – Crack propagation through kerb



Figure 1554 – General Condition of kerb



Figure 1555 – General Condition of kerb



Figure 1556 – General Condition of layback and gutter



Figure 1557 – General Condition of kerb and gutter



Figure 1558 – Crack propagation through kerb and gutter



Figure 1559 – General Condition of gutter



Figure 1560 – General Condition of kerb and gutter



Figure 1561 – Crack propagation through kerb and gutter



Figure 1562 – Loss of material through kerb



Figure 1563 – General Condition of stormwater inlet pit



Figure 1564 – General Condition of kerb and gutter



Figure 1565 – Evidence of patchwork through gutter



Figure 1566 – Loss of material through kerb



Figure 1567 – General Condition of kerb and gutter



Figure 1568 – General Condition of stormwater inlet pit

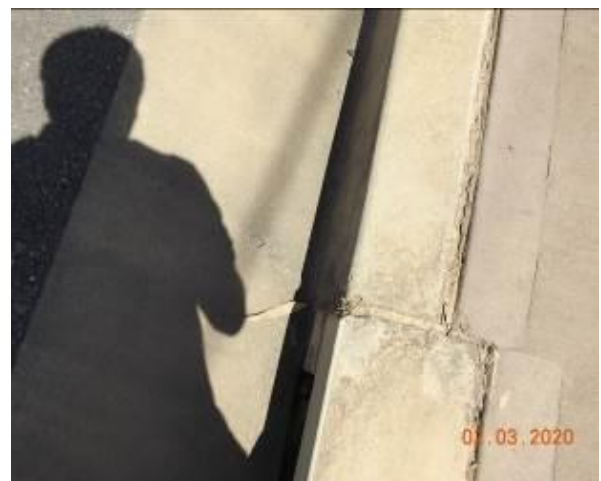


Figure 1569 – Crack propagation through stormwater inlet pit



Figure 1570 – General Condition of kerb and gutter



Figure 1571 – General Condition of kerb and gutter



Figure 1572 – General Condition of kerb and gutter



Figure 1573 – General Condition of stormwater inlet pit



Figure 1574 – Loss of material through stormwater inlet pit



Figure 1575 – Crack propagation through stormwater inlet pit



Figure 1576 – General Condition of kerb and gutter



Figure 1577 – General Condition of kerb and gutter



Figure 1578 – General Condition of kerb and gutter



Figure 1579 – Crack propagation through kerb and gutter



Figure 1580 – General Condition of kerb and gutter

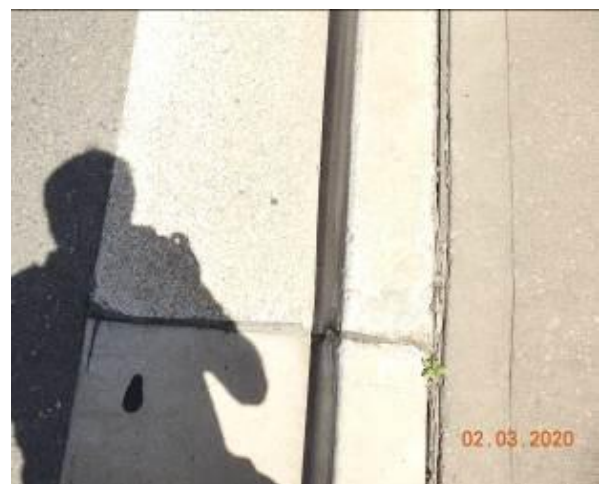


Figure 1581 – Crack propagation through kerb



Figure 1582 – General Condition of stormwater inlet pit



Figure 1583 – General Condition of kerb and gutter



Figure 1584 – Loss of material through gutter



Figure 1585 – General Condition of kerb and gutter



Figure 1586 – General Condition of kerb and gutter



Figure 1587 – General Condition of kerb and gutter



Figure 1588 – General Condition of kerb and gutter



Figure 1589 – Crack propagation and loss of material through kerb and gutter



Figure 1590 – General Condition of kerb and gutter



Figure 1591 – General Condition of stormwater inlet pit



Figure 1592 – General Condition of kerb and gutter

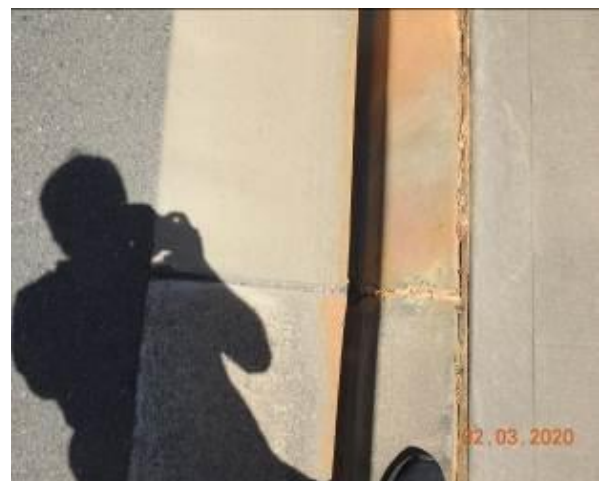


Figure 1593 – Crack propagation through kerb



Figure 1594 – Loss of material through gutter



Figure 1595 – General Condition of kerb and gutter



Figure 1596 – General Condition of kerb and gutter



Figure 1597 – Crack propagation through kerb



Figure 1598 – General Condition of kerb



Figure 1599 – General Condition of stormwater inlet pit



Figure 1600 – Crack propagation through stormwater inlet pit



Figure 1601 – General Condition of kerb and gutter



Figure 1602 – General Condition of kerb and gutter



Figure 1603 – General Condition of kerb and gutter



Figure 1604 – Loss of material through kerb and gutter



Figure 1605 – General Condition of kerb and gutter



Figure 1606 – General Condition of kerb and gutter



Figure 1607 – Loss of material through kerb



Figure 1608 – General Condition of stormwater inlet pit



Figure 1609 – General Condition of kerb and gutter



Figure 1610 – Crack propagation and loss of material through kerb and gutter



Figure 1611 – General Condition of kerb and gutter



Figure 1612 – General Condition of kerb and gutter



Figure 1613 – General Condition of kerb and gutter



Figure 1614 – General Condition of kerb and gutter



Figure 1615 – Crack propagation through kerb and gutter



Figure 1616 – General Condition of kerb and gutter



Figure 1617 – General Condition of kerb and gutter



Figure 1618 – General Condition of stormwater inlet pit



Figure 1619 – General Condition of kerb and gutter



Figure 1620 – Loss of material through kerb



Figure 1621 – General Condition of kerb and gutter



Figure 1622 – General Condition of kerb and gutter



Figure 1623 – General Condition of kerb and gutter



Figure 1624 – Loss of material through kerb

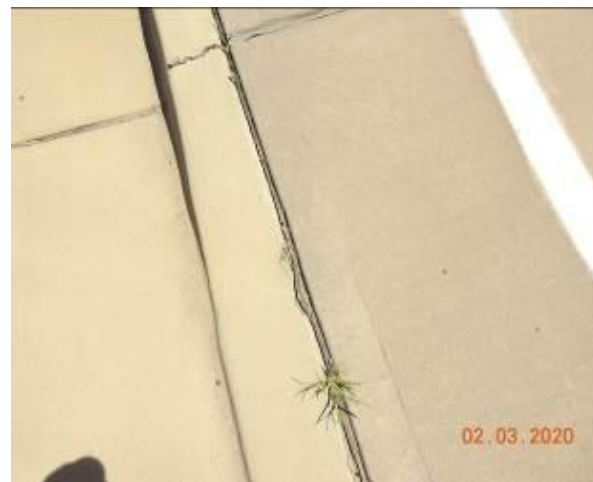


Figure 1625 – Loss of material through layback



Figure 1626 – Crack propagation through kerb



Figure 1627 – General Condition of kerb and gutter



Figure 1628 – General Condition of stormwater inlet pit

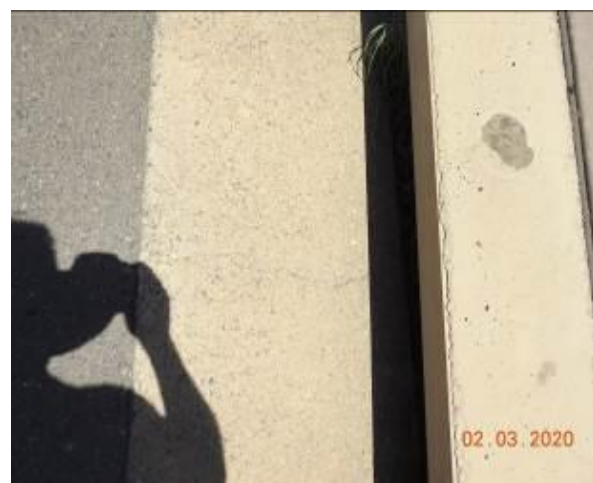


Figure 1629 – Crack propagation through stormwater inlet pit



Figure 1630 – General Condition of kerb and gutter



Figure 1631 – General Condition of kerb and gutter



Figure 1632 – General Condition of kerb and gutter



Figure 1633 – Crack propagation and loss of material through kerb and gutter



Figure 1634 – General Condition of layback and gutter



Figure 1635 – Loss of material through kerb



Figure 1636 – General Condition of kerb and gutter



Figure 1637 – General Condition of kerb and gutter



Figure 1638 – Crack propagation through kerb



Figure 1639 – Loss of material through kerb



Figure 1640 – General Condition of kerb and gutter



Figure 1641 – Loss of material through kerb and gutter



Figure 1642 – General Condition of stormwater inlet pit



Figure 1643 – Loss of material through kerb



Figure 1644 – General Condition of kerb and gutter



Figure 1645 – Loss of material through kerb



Figure 1646 – Crack propagation through layback and gutter



Figure 1647 – General Condition of kerb and gutter



Figure 1648 – General Condition of kerb and gutter



Figure 1649 – General Condition of kerb and gutter



Figure 1650 – Crack propagation through kerb and gutter



Figure 1651 – General Condition of kerb and gutter



Figure 1652 – General Condition of kerb and gutter



Figure 1653 – General Condition of stormwater inlet pit



Figure 1654 – General Condition of kerb and gutter



Figure 1655 – Loss of material through kerb and gutter



Figure 1656 – General Condition of kerb and gutter



Figure 1657 – General Condition of kerb and gutter



Figure 1658 – Crack propagation and loss of material through kerb and gutter



Figure 1659 – General Condition of kerb and gutter



Figure 1660 – General Condition of kerb and gutter



Figure 1661 – Crack propagation and loss of material through kerb and gutter



Figure 1662 – General Condition of kerb and gutter



Figure 1663 – General Condition of kerb and gutter



Figure 1664 – Loss of material through kerb



Figure 1665 – General Condition of kerb and gutter



Figure 1666 – General Condition of stormwater inlet pit



Figure 1667 – Crack propagation through stormwater inlet pit



Figure 1668 – General Condition of kerb and gutter



Figure 1669 – Loss of material through kerb



Figure 1670 – General Condition of kerb and gutter



Figure 1671 – General Condition of kerb and gutter



Figure 1672 – General Condition of kerb and gutter



Figure 1673 – Crack propagation and loss of material through kerb and gutter



Figure 1674 – General Condition of kerb and gutter



Figure 1675 – General Condition of kerb and gutter



Figure 1676 – Crack propagation and loss of material through kerb and gutter



Figure 1677 – Loss of material through kerb



Figure 1678 – General Condition of kerb and gutter



Figure 1679 – General Condition of kerb and gutter



Figure 1680 – General Condition of stormwater inlet pit



Figure 1681 – General Condition of kerb and gutter



Figure 1682 – Crack propagation and loss of material through kerb and gutter



Figure 1683 – General Condition of kerb and gutter



Figure 1684 – General Condition of kerb and gutter



Figure 1685 – Loss of material through gutter



Figure 1686 – Loss of material through kerb and gutter



Figure 1687 – Loss of material through layback



Figure 1688 – General Condition of layback and gutter



Figure 1689 – General Condition of kerb and gutter



Figure 1690 – Crack propagation and loss of material through kerb



Figure 1691 – General Condition of kerb and gutter



Figure 1692 – General Condition of kerb and gutter



Figure 1693 – Crack propagation and loss of material through gutter



Figure 1694 – General Condition of stormwater inlet pit



Figure 1695 – Loss of material through kerb and gutter



Figure 1696 – General Condition of kerb and gutter



Figure 1697 – General Condition of layback and gutter



Figure 1698 – Loss of material through kerb



Figure 1699 – Loss of material through layback



Figure 1700 – General Condition of layback and gutter



Figure 1701 – Crack propagation through kerb and gutter



Figure 1702 – General Condition of kerb and gutter



Figure 1703 – General Condition of road surface



Figure 1704 – General Condition of road surface



Figure 1705 – General Condition of road surface



Figure 1706 – General Condition of road surface



Figure 1707 – General Condition of road surface



Figure 1708 – General Condition of road surface



Figure 1709 – General Condition of road surface



Figure 1710 – General Condition of road surface



Figure 1711 – Crack propagation through road surface



Figure 1712 – General Condition of road surface



Figure 1713 – Crack propagation through road surface



Figure 1714 – General Condition of road surface



Figure 1715 – General Condition of road surface



Figure 1716 – General Condition of road surface



Figure 1717 – Crack propagation through road surface



Figure 1718 – General Condition of road surface



Figure 1719 – General Condition of road surface



Figure 1720 – General Condition of road surface



Figure 1722 – General Condition of road surface



Figure 1724 – Crack propagation through road surface



Figure 1721 – General Condition of road surface



Figure 1723 – General Condition of road surface



Figure 1725 – General Condition of road surface



Figure 1726 – Crack propagation through road surface



Figure 1727 – General Condition of road surface



Figure 1728 – General Condition of road surface



Figure 1729 – General Condition of road surface



Figure 1730 – General Condition of road surface



Figure 1731 – General Condition of road surface



Figure 1732 – General Condition of road surface



Figure 1733 – General Condition of road surface



Figure 1734 – Crack propagation through road surface



Figure 1735 – General Condition of road surface



Figure 1736 – Crack propagation through road surface



Figure 1737 – General Condition of road surface



Figure 1738 – General Condition of road surface



Figure 1739 – General Condition of road surface



Figure 1740 – General Condition of road surface



Figure 1741 – General Condition of road surface



Figure 1742 – General Condition of road surface



Figure 1743 – General Condition of road surface



Figure 1744 – General Condition of road surface



Figure 1745 – General Condition of road surface



Figure 1746 – General Condition of road surface



Figure 1747 – General Condition of road surface



Figure 1748 – General Condition of road surface



Figure 1749 – General Condition of road surface



Figure 1750 – General Condition of road surface



Figure 1751 – General Condition of road surface



Figure 1752 – General Condition of road surface



Figure 1753 – General Condition of road surface



Figure 1754 – General Condition of road surface



Figure 1755 – General Condition of road surface



Figure 1756 – General Condition of road surface



Figure 1757 – General Condition of road surface



Figure 1758 – General Condition of road surface



Figure 1759 – General Condition of road surface



Figure 1760 – General Condition of road surface



Figure 1761 – General Condition of road surface



Figure 1762 – General Condition of road surface



Figure 1763 – General Condition of road surface



Figure 1764 – General Condition of road surface



Figure 1765 – General Condition of road surface



Figure 1766 – General Condition of road surface



Figure 1767 – General Condition of road surface



Figure 1768 – General Condition of road surface



Figure 1769 – General Condition of road surface



Figure 1770 – General Condition of road surface



Figure 1771 – General Condition of road surface



Figure 1772 – General Condition of road surface



Figure 1773 – General Condition of road surface



Figure 1774 – General Condition of road surface



Figure 1775 – General Condition of road surface



Figure 1776 – General Condition of road surface



Figure 1777 – General Condition of road surface



Figure 1778 – General Condition of road surface



Figure 1779 – General Condition of road surface



Figure 1780 – General Condition of road surface



Figure 1781 – General Condition of road surface



Figure 1782 – General Condition of road surface



Figure 1783 – General Condition of road surface



Figure 1784 – General Condition of road surface



Figure 1785 – General Condition of road surface



Figure 1786 – General Condition of road surface



Figure 1787 – General Condition of road surface



Figure 1788 – General Condition of road surface



Figure 1789 – General Condition of road surface



Figure 1790 – General Condition of road surface



Figure 1791 – General Condition of road surface



Figure 1792 – General Condition of road surface



Figure 1793 – General Condition of road surface



Figure 1794 – Evidence of patchwork through road surface



Figure 1795 – General Condition of road surface



Figure 1796 – General Condition of road surface



Figure 1797 – General Condition of road surface



Figure 1798 – General Condition of road surface



Figure 1799 – General Condition of road surface



Figure 1800 – General Condition of road surface



Figure 1801 – General Condition of road surface



Figure 1802 – General Condition of road surface



Figure 1803 – General Condition of road surface



Figure 1804 – General Condition of road surface



Figure 1805 – General Condition of road surface



Figure 1806 – General Condition of road surface



Figure 1807 – General Condition of road surface



Figure 1808 – General Condition of road surface



Figure 1809 – General Condition of road surface



Figure 1810 –General Condition of street sign



Figure 1811 – General Condition of traffic light



Figure 1812 – General Condition of lamp post
Identification No.835915



Figure 1813 – General Condition of lamp post



Figure 1814 – General Condition of traffic light



Figure 1815 – General Condition of lamp post
Identification No.835987



Figure 1816 – General Condition of lamp post



Figure 1817 – General Condition of street sign



Figure 1818 – General Condition of electricity box
Identification No.4474



Figure 1819 – General Condition of electricity box
Identification No.1552



Figure 1820 – General Condition of electricity box
Identification No.126945



Figure 1821 – General Condition of street sign



Figure 1822 – General Condition of lamp post
Identification No.835898



Figure 1823 – General Condition of lamp post



Figure 1824 – General Condition of telegraph pole
Identification No.213992/128



Figure 1825 – General Condition of telegraph pole



Figure 1826 – General Condition of street sign



Figure 1827 – General Condition of telegraph pole
Identification No.213994/130



Figure 1828 – General Condition of telegraph pole



Figure 1829 – General Condition of lamp post
Identification No.213994/130



Figure 1830 – General Condition of lamp post



Figure 1831 – General Condition of electricity box
Identification No.S118306



Figure 1832 – General Condition of street sign



Figure 1833 – General Condition of telegraph pole
Identification No.213993 / 129



Figure 1834 – General Condition of telegraph pole



Figure 1835 – General Condition of lamp post
Identification No.835900



Figure 1836 – General Condition of lamp post



Figure 1837 – General Condition of telegraph pole
Identification No.213991 / 127



Figure 1838 – General Condition of telegraph pole



Figure 1839 – General Condition of electricity box
Identification No.118307



Figure 1840 – General Condition of street sign



Figure 1841 – General Condition of lamp post
Identification No.835901



Figure 1842 – General Condition of lamp post



Figure 1843 – General Condition of telegraph pole
Identification No.213989 / 126



Figure 1844 – General Condition of telegraph pole



Figure 1845 – General Condition of lamp post
Identification No.835902



Figure 1846 – General Condition of lamp post



Figure 1847 – General Condition of street sign



Figure 1848 – General Condition of electricity box
Identification No.S118308



Figure 1849 – General Condition of telegraph pole
Identification No.213987 / 125



Figure 1850 – General Condition of telegraph pole



Figure 1851 – General Condition of street sign



Figure 1852 – General Condition of street sign



Figure 1853 – General Condition of lamp post
Identification No.835903



Figure 1854 – General Condition of lamp post



Figure 1855 – General Condition of street sign



Figure 1856 – General Condition of telegraph pole
Identification No.213955 / 124



Figure 1857 – General Condition of telegraph pole



Figure 1858 – General Condition of electricity box
Identification No.118309



Figure 1859 – General Condition of lamp post
Identification No.835904



Figure 1860 – General Condition of lamp post



Figure 1861 – General Condition of street sign



Figure 1862 – General Condition of telegraph pole
Identification No.213893 / 122



Figure 1863 – General Condition of telegraph pole



Figure 1864 – General Condition of telegraph pole
Identification No.213984 / 123



Figure 1865 – General Condition of street sign



Figure 1866 – General Condition of service pit



Figure 1867 – General Condition of service pit



Figure 1868 – General Condition of lamp post
Identification No.835905



Figure 1869 – General Condition of lamp post



Figure 1870 – General Condition of traffic light / street sign



Comments

The section of Schofields Road which is associated with the subject site was inspected and photographic evidence compiled in order to depict the condition of the council assets along this particular stretch of road prior to the commencement of any work at the subject site.

The road surface of Schofields Road at the time of the inspection was in a good condition with evidence of cracking and patchwork.

At the same time the kerb, gutter and footpath which accompany the road way were also inspected. At the time of this inspection they were found to be in a good condition. There was evidence of patchwork, crack propagation and material loss through the kerb, gutter and footpath.

The condition of the telegraph poles, lamp posts, electricity boxes, stormwater inlet pits, traffic island, street signs and service pits was also inspected and were determined to be in a reasonable condition. There was evidence of crack propagation and loss of material through stormwater inlet pit.

Refer to Appendix (D) for photographic records of the above.



Appendix E

Themeda Avenue Council Assets





Figure 1871 – General Condition of footpath pavement



Figure 1872 – General Condition of service pit



Figure 1873 – General Condition of service pit



Figure 1874 – General Condition of footpath pavement



Figure 1875 – General Condition of footpath pavement



Figure 1876 – General Condition of service pit



Figure 1877 – General Condition of footpath pavement



Figure 1878 – General Condition of footpath pavement



Figure 1879 – General Condition of footpath pavement



Figure 1880 – General Condition of park bench



Figure 1881 – General Condition of public park area



Figure 1882 – General Condition of plantation



Figure 1883 – General Condition of park grass area



Figure 1884 – General Condition of park plantation



Figure 1885 – General Condition of park plantation



Figure 1886 – General Condition of park plantation



Figure 1887 – General Condition of park public bench



Figure 1888 – General Condition of park bench



Figure 1889 – General Condition of footpath pavement



Figure 1890 – General Condition of footpath pavement



Figure 1891 – General Condition of footpath pavement



Figure 1892 – General Condition of footpath pavement



Figure 1893 – General Condition of footpath pavement



Figure 1894 – General Condition of footpath pavement



Figure 1895 – General Condition of footpath pavement



Figure 1896 – General Condition of footpath pavement



Figure 1897 – General Condition of footpath pavement



Figure 1898 – General Condition of footpath pavement



Figure 1899 – General Condition of footpath pavement



Figure 1900 – General Condition of footpath pavement



Figure 1901 – Loss of material through service pit



Figure 1902 – General Condition of footpath pavement



Figure 1903 – General Condition of footpath pavement



Figure 1904 – General Condition of service pit



Figure 1905 – General Condition of footpath pavement



Figure 1906 – General Condition of footpath pavement



Figure 1907 – General Condition of service pit



Figure 1908 – General Condition of service pit



Figure 1909 – General Condition of footpath pavement



Figure 1910 – General Condition of footpath pavement



Figure 1911 – General Condition of footpath pavement



Figure 1912 – General Condition of footpath pavement



Figure 1913 – General Condition of footpath pavement



Figure 1914 – General Condition of service pit



Figure 1915 – General Condition of service pit



Figure 1916 – General Condition of footpath pavement



Figure 1917 – General Condition of footpath pavement



Figure 1918 – General Condition of footpath pavement



Figure 1919 – General Condition of footpath pavement



Figure 1920 – Crack propagation through footpath pavement



Figure 1921 – General Condition of footpath pavement



Figure 1922 – General Condition of footpath pavement



Figure 1923 – General Condition of footpath pavement



Figure 1924 – Loss of material through service pit



Figure 1925 – Loss of material through service pit



Figure 1926 – General Condition of footpath pavement



Figure 1927 – General Condition of footpath pavement



Figure 1928 – General Condition of footpath pavement



Figure 1929 – Crack propagation through footpath pavement



Figure 1930 – General Condition of footpath pavement



Figure 1931 – Crack propagation and loss of material through footpath pavement



Figure 1932 – General Condition of footpath pavement



Figure 1933 – Crack propagation and loss of material through footpath pavement



Figure 1934 – Crack propagation through footpath pavement



Figure 1935 – General Condition of footpath pavement



Figure 1936 – General Condition of footpath pavement



Figure 1937 – General Condition of footpath pavement



Figure 1938 – Crack propagation through footpath pavement



Figure 1939 – General Condition of footpath pavement



Figure 1940 – Loss of material through footpath pavement



Figure 1941 – Crack propagation through footpath pavement



Figure 1942 – General Condition of footpath pavement



Figure 1943 – General Condition of footpath pavement



Figure 1944 – General Condition of public bench



Figure 1945 – General Condition of footpath pavement



Figure 1946 – General Condition of footpath pavement



Figure 1947 – General Condition of footpath pavement



Figure 1948 – General Condition of footpath pavement



Figure 1949 – General Condition of kerb and gutter



Figure 1950 – General Condition of kerb and gutter



Figure 1951 – Crack propagation through kerb and gutter



Figure 1952 – General Condition of kerb and gutter



Figure 1953 – Loss of material through gutter



Figure 1954 – General Condition of kerb and gutter



Figure 1955 – Crack propagation and loss of material through kerb and gutter



Figure 1956 – General Condition of kerb and gutter



Figure 1957 – General Condition of kerb and gutter



Figure 1958 – Crack propagation through gutter



Figure 1959 – General Condition of stormwater inlet pit



Figure 1960 – General Condition of kerb and gutter



Figure 1961 – General Condition of kerb and gutter



Figure 1962 – Evidence of patchwork through gutter



Figure 1963 – Loss of material through gutter



Figure 1964 – Loss of material through gutter



Figure 1965 – General Condition of kerb and gutter



Figure 1966 – Crack propagation and Evidence of patchwork through gutter



Figure 1967 – General Condition of kerb and gutter



Figure 1968 – Crack propagation and loss of material through kerb and gutter



Figure 1969 – General Condition of kerb and gutter



Figure 1970 – Crack propagation through kerb and gutter



Figure 1971 – Loss of material through gutter



Figure 1972 – Crack propagation and loss of material through kerb and gutter



Figure 1973 – General Condition of kerb and gutter



Figure 1974 – Crack propagation through kerb and gutter



Figure 1975 – Crack propagation through kerb and gutter



Figure 1976 – Crack propagation through kerb and gutter



Figure 1977 – General Condition of kerb and gutter



Figure 1978 – Crack propagation through kerb



Figure 1979 – Loss of material through kerb and gutter



Figure 1980 – Loss of material through kerb and gutter



Figure 1981 – General Condition of stormwater inlet pit



Figure 1982 – General Condition of kerb and gutter



Figure 1983 – Loss of material through kerb and gutter



Figure 1984 – Crack propagation through kerb



Figure 1985 – Crack propagation through kerb



Figure 1986 – General Condition of kerb and gutter



Figure 1987 – Crack propagation and loss of material through kerb



Figure 1988 – Crack propagation through kerb and gutter



Figure 1989 – Crack propagation through kerb and gutter



Figure 1990 – Loss of material through gutter



Figure 1991 – General Condition of kerb and gutter



Figure 1992 – Loss of material through gutter



Figure 1993 – General Condition of stormwater inlet pit



Figure 1994 – General Condition of kerb and gutter



Figure 1995 – Loss of material through kerb and gutter



Figure 1996 – General Condition of kerb and gutter



Figure 1997 – Loss of material through kerb and gutter



Figure 1998 – Crack propagation through kerb and gutter



Figure 1999 – General Condition of kerb and gutter



Figure 2000 – Crack propagation through kerb and gutter



Figure 2001 – Crack propagation through kerb and gutter



Figure 2002 – General Condition of kerb and gutter



Figure 2003 – Crack propagation through kerb



Figure 2004 – Crack propagation through kerb



Figure 2005 – General Condition of kerb



Figure 2006 – Crack propagation through kerb



Figure 2007 – General Condition of kerb



Figure 2008 – Crack propagation through kerb



Figure 2009 – Crack propagation through kerb



Figure 2010 – General Condition of kerb



Figure 2011 – Crack propagation through kerb

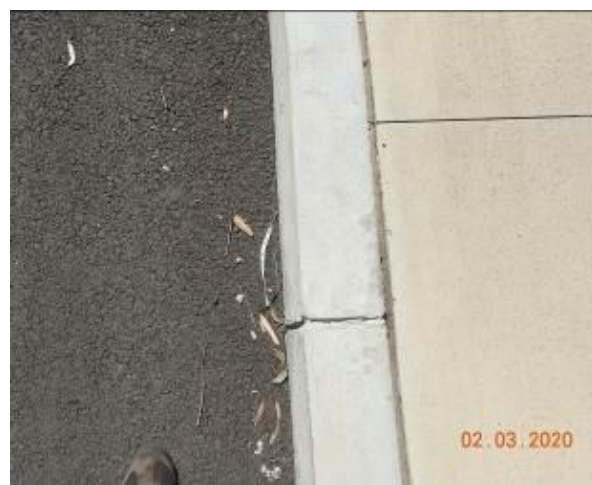


Figure 2012 – Loss of material through kerb

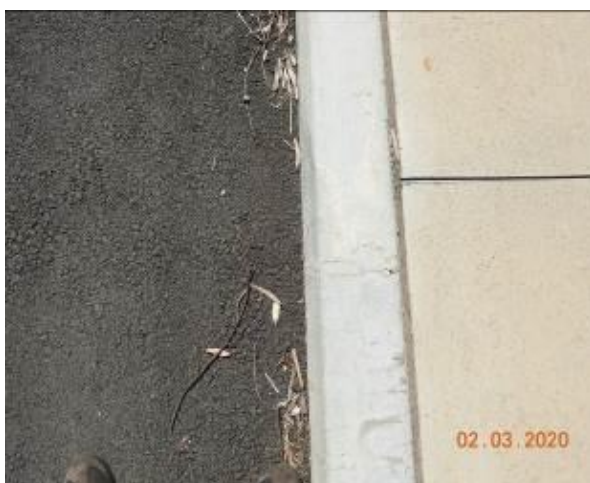


Figure 2013 – Crack propagation through kerb



Figure 2014 – Crack propagation through kerb



Figure 2015 – General Condition of kerb and gutter



Figure 2016 – General Condition of kerb



Figure 2017 – Crack propagation and loss of material through kerb



Figure 2018 – General Condition of kerb



Figure 2019 – Loss of material through kerb



Figure 2020 – Loss of material through kerb



Figure 2021 – General Condition of kerb



Figure 2022 – General Condition of stormwater inlet pit



Figure 2023 – General Condition of gutter



Figure 2024 – Crack propagation through kerb



Figure 2025 – Crack propagation through kerb



Figure 2026 – Crack propagation through kerb



Figure 2027 – General Condition of kerb



Figure 2028 – Crack propagation through kerb



Figure 2029 – Crack propagation through kerb



Figure 2030 – Loss of material through kerb



Figure 2031 – General Condition of kerb and gutter



Figure 2032 – Crack propagation through kerb



Figure 2033 – Crack propagation through kerb



Figure 2034 – Crack propagation through kerb



Figure 2035 – General Condition of kerb and gutter



Figure 2036 – Crack propagation and loss of material through kerb and gutter



Figure 2037 – General Condition of stormwater inlet pit



Figure 2038 – Crack propagation through stormwater inlet pit



Figure 2039 – Crack propagation through gutter



Figure 2040 – General Condition of layback and gutter



Figure 2041 – Crack propagation through layback and gutter



Figure 2042 – General Condition of layback and gutter



Figure 2043 – Evidence of patchwork through layback and gutter



Figure 2044 – Loss of material through gutter



Figure 2045 – General Condition of kerb and gutter



Figure 2046 – Loss of material through kerb and gutter



Figure 2047 – Crack propagation through kerb and gutter



Figure 2048 – Loss of material through kerb and gutter



Figure 2049 – General Condition of kerb and gutter



Figure 2050 – Crack propagation through kerb and gutter



Figure 2051 – Loss of material through gutter



Figure 2052 – General Condition of kerb and gutter



Figure 2053 – General Condition of stormwater inlet pit

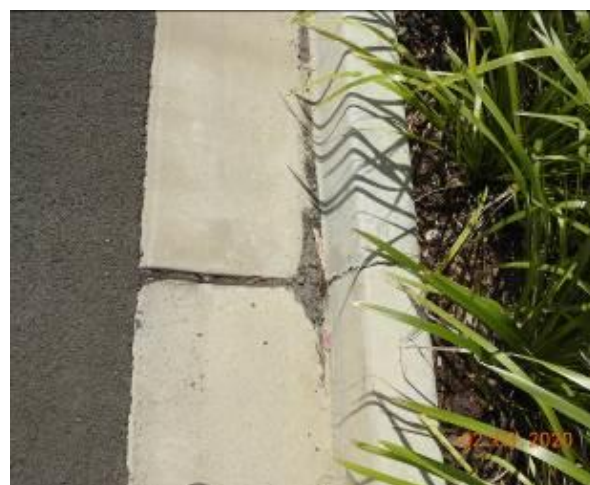


Figure 2054 – Crack propagation and loss of material through kerb and gutter



Figure 2055 – General Condition of kerb and gutter

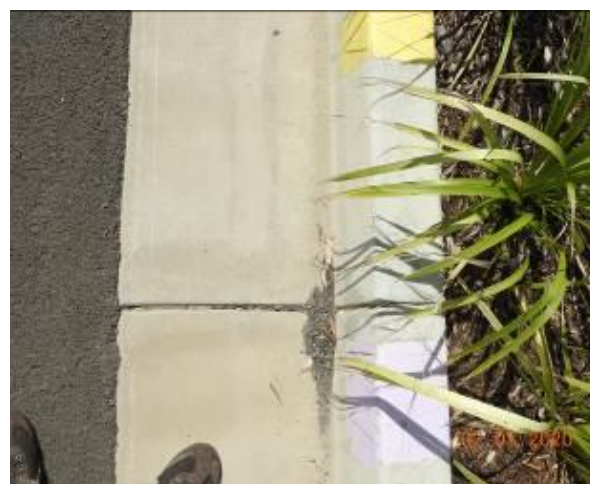


Figure 2056 – Crack propagation through kerb and gutter



Figure 2057 – Crack propagation through kerb and gutter



Figure 2058 – Crack propagation through kerb and gutter



Figure 2059 – Crack propagation through kerb and gutter



Figure 2060 – General Condition of kerb



Figure 2061 – Crack propagation and Separation through kerb



Figure 2062 – General Condition of kerb



Figure 2063 – General Condition of gutter



Figure 2064 – General Condition of kerb



Figure 2065 – Crack propagation through kerb



Figure 2066 – Crack propagation through kerb



Figure 2067 – Crack propagation through kerb



Figure 2068 – General Condition of kerb



Figure 2069 – Crack propagation and loss of material through kerb



Figure 2070 – Crack propagation and loss of material through kerb



Figure 2071 – Loss of material through kerb



Figure 2072 – Crack propagation through kerb



Figure 2073 – Crack propagation through kerb



Figure 2074 – General Condition of kerb



Figure 2075 – Crack propagation through kerb



Figure 2076 – Crack propagation through kerb



Figure 2077 – Crack propagation through kerb



Figure 2078 – General Condition of kerb and gutter



Figure 2079 – General Condition of gutter



Figure 2080 – General Condition of kerb



Figure 2081 – Loss of material through kerb



Figure 2082 – Crack propagation through kerb



Figure 2083 – Separation through kerb



Figure 2084 – General Condition of kerb



Figure 2085 – Crack propagation through kerb



Figure 2086 – General Condition of kerb



Figure 2087 – Crack propagation and loss of material through kerb



Figure 2088 – Crack propagation through kerb



Figure 2089 – General Condition of kerb



Figure 2090 – Crack propagation through kerb



Figure 2091 – Crack propagation through kerb



Figure 2092 – General Condition of kerb



Figure 2093 – General Condition of gutter



Figure 2094 – General Condition of stormwater inlet pit



Figure 2095 – General Condition of kerb and gutter



Figure 2096 – Crack propagation through kerb



Figure 2097 – Crack propagation through gutter



Figure 2098 – General Condition of gutter



Figure 2099 – General Condition of kerb



Figure 2100 – Separation through kerb



Figure 2101 – General Condition of kerb



Figure 2102 – Crack propagation through kerb



Figure 2103 – Crack propagation through kerb



Figure 2104 – Crack propagation through kerb



Figure 2105 – General Condition of kerb



Figure 2106 – Crack propagation through kerb



Figure 2107 – Crack propagation through kerb



Figure 2108 – Crack propagation through kerb



Figure 2109 – General Condition of gutter



Figure 2110 – General Condition of stormwater inlet pit



Figure 2111 – Crack propagation through kerb



Figure 2112 – Crack propagation through kerb



Figure 2113 – General Condition of kerb and gutter



Figure 2114 – Crack propagation through kerb



Figure 2115 – Crack propagation through kerb and gutter



Figure 2116 – Crack propagation through kerb and gutter



Figure 2117 – General Condition of kerb and gutter



Figure 2118 – Crack propagation through kerb and gutter



Figure 2119 – General Condition of kerb and gutter



Figure 2120 – General Condition of layback and gutter



Figure 2121 – Crack propagation through layback and gutter

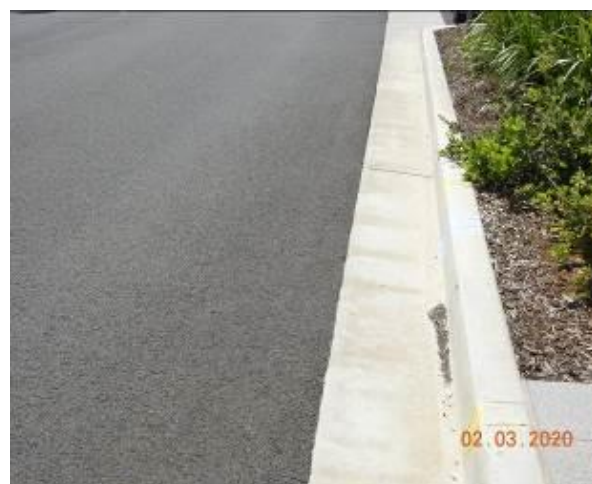


Figure 2122 – General Condition of kerb and gutter



Figure 2123 – Crack propagation through kerb and gutter



Figure 2124 – Crack propagation through kerb and gutter



Figure 2125 – General Condition of kerb and gutter



Figure 2126 – General Condition of kerb and gutter



Figure 2127 – General Condition of kerb



Figure 2128 – General Condition of kerb

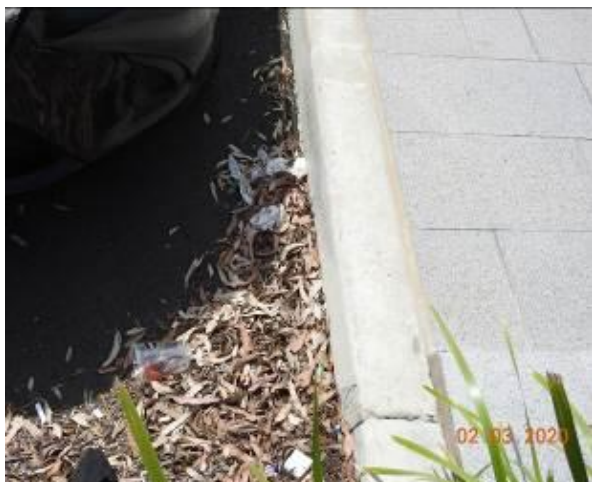


Figure 2129 – Crack propagation through kerb



Figure 2130 – General Condition of kerb



Figure 2131 – General Condition of kerb



Figure 2132 – Crack propagation through kerb



Figure 2133 – General Condition of service pit



Figure 2134 – General Condition of stormwater inlet pit



Figure 2135 – General Condition of gutter

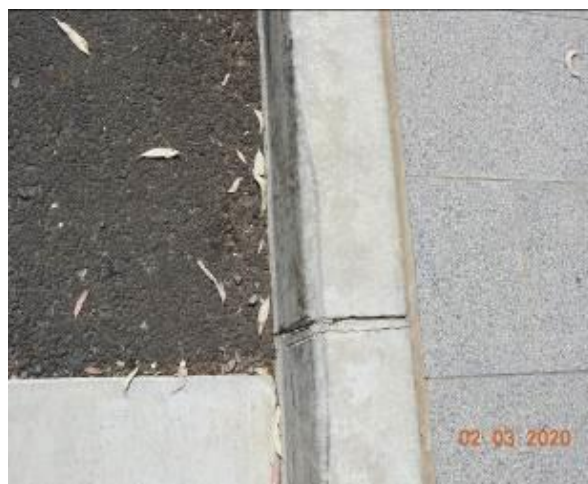


Figure 2136 – Crack propagation through kerb



Figure 2137 – Crack propagation through kerb



Figure 2138 – Crack propagation through kerb



Figure 2139 – Crack propagation through kerb



Figure 2140 – Crack propagation through kerb



Figure 2141 – Crack propagation through kerb



Figure 2142 – General Condition of kerb



Figure 2143 – Crack propagation through kerb



Figure 2144 – Crack propagation through kerb



Figure 2145 – Crack propagation through kerb



Figure 2146 – Crack propagation and loss of material through kerb



Figure 2147 – Crack propagation through kerb



Figure 2148 – Crack propagation through kerb



Figure 2149 – General Condition of stormwater inlet pit



Figure 2150 – General Condition of kerb



Figure 2151 – Crack propagation through kerb



Figure 2152 – General Condition of kerb and gutter



Figure 2153 – General Condition of kerb and gutter



Figure 2154 – Crack propagation through kerb and gutter



Figure 2155 – General Condition of kerb and gutter



Figure 2156 – Crack propagation through kerb



Figure 2157 – Loss of material through kerb and gutter



Figure 2158 – Crack propagation through kerb



Figure 2159 – General Condition of stormwater inlet pit



Figure 2160 – Crack propagation through kerb



Figure 2161 – General Condition of layback and gutter



Figure 2162 – General Condition of kerb and gutter



Figure 2163 – General Condition of kerb and gutter



Figure 2164 – Crack propagation through kerb and gutter



Figure 2165 – Crack propagation and loss of material through kerb and gutter



Figure 2166 – Crack propagation through kerb and gutter



Figure 2167 – General Condition of stormwater inlet pit



Figure 2168 – General Condition of kerb and gutter



Figure 2169 – General Condition of kerb and gutter



Figure 2170 – Crack propagation through kerb



Figure 2171 – Crack propagation through kerb



Figure 2172 – Crack propagation through kerb and gutter



Figure 2173 – Crack propagation through kerb and gutter



Figure 2174 – Crack propagation through kerb and gutter

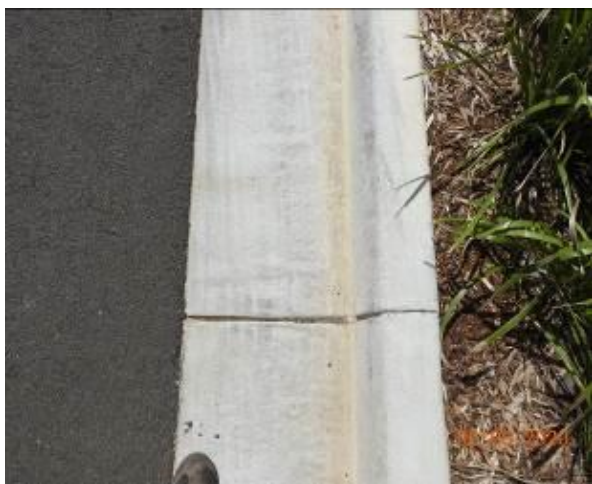


Figure 2175 – Crack propagation through kerb and gutter

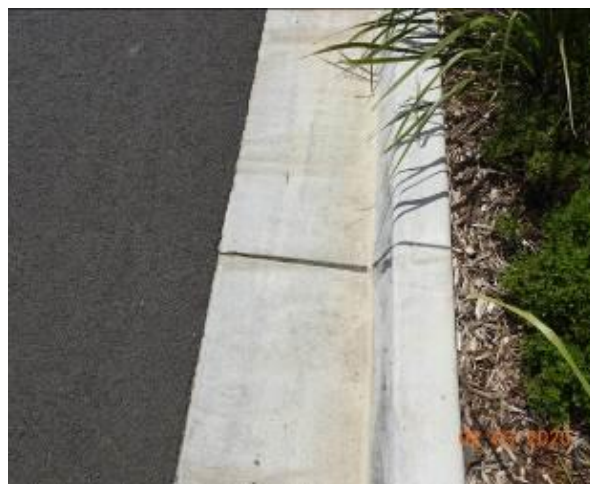


Figure 2176 – Crack propagation through kerb



Figure 2177 – General Condition of kerb and gutter



Figure 2178 – Crack propagation through kerb and gutter



Figure 2179 – Crack propagation through kerb



Figure 2180 – Crack propagation through kerb and gutter



Figure 2181 – Crack propagation and loss of material through kerb and gutter



Figure 2182 – General Condition of layback and gutter



Figure 2183 – Crack propagation through kerb



Figure 2184 – General Condition of stormwater inlet pit



Figure 2185 – Crack propagation through kerb



Figure 2186 – General Condition of kerb and gutter



Figure 2187 – Crack propagation through kerb and gutter



Figure 2188 – Crack propagation through kerb and gutter



Figure 2189 – Crack propagation through kerb and gutter



Figure 2190 – Crack propagation through kerb and gutter



Figure 2191 – Crack propagation through kerb and gutter



Figure 2192 – General Condition of kerb and gutter



Figure 2193 – General Condition of stormwater inlet pit



Figure 2194 – General Condition of layback and gutter



Figure 2195 – Crack propagation through layback and gutter



Figure 2196 – General Condition of layback and gutter



Figure 2197 – General Condition of layback and gutter



Figure 2198 – General Condition of gutter



Figure 2199 – General Condition of road surface



Figure 2200 – General Condition of road surface



Figure 2201 – General Condition of road surface



Figure 2202 – General Condition of road surface



Figure 2203 – General Condition of road surface



Figure 2204 – General Condition of road surface



Figure 2205 – General Condition of road surface



Figure 2206 – General Condition of road surface



Figure 2207 – General Condition of road surface



Figure 2208 – General Condition of road surface



Figure 2209 – General Condition of road surface



Figure 2210 – General Condition of road surface



Figure 2211 – General Condition of road surface



Figure 2212 – General Condition of road surface



Figure 2213 – General Condition of road surface



Figure 2214 – General Condition of road surface



Figure 2215 – General Condition of road surface



Figure 2216 – General Condition of road surface



Figure 2217 – General Condition of road surface



Figure 2218 – General Condition of road surface



Figure 2219 – General Condition of road surface



Figure 2220 – General Condition of road surface



Figure 2221 – General Condition of road surface



Figure 2222 – General Condition of road surface



Figure 2223 – General Condition of road surface



Figure 2224 – General Condition of road surface



Figure 2225 – General Condition of road surface



Figure 2226 – General Condition of road surface



Figure 2227 – General Condition of road surface



Figure 2228 – General Condition of road surface



Figure 2229 – General Condition of road surface



Figure 2230 – General Condition of road surface



Figure 2231 – General Condition of road surface



Figure 2232 – General Condition of road surface



Figure 2233 – General Condition of road surface



Figure 2234 – General Condition of road surface



Figure 2235 – General Condition of road surface



Figure 2236 – General Condition of road surface



Figure 2237 – General Condition of street sign / traffic light



Figure 2238 – General Condition of street sign



Figure 2239 – General Condition of street sign



Figure 2240 – General Condition of street sign



Figure 2241 – General Condition of street sign



Figure 2242 – General Condition of lamp post
Identification No.922675



Figure 2243 – General Condition of lamp post



Figure 2244 – General Condition of lamp post
Identification No.922678



Figure 2245 – General Condition of lamp post



Figure 2246 – General Condition of lamp post
Identification No.922677



Figure 2247 – General Condition of lamp post



Figure 2248 – General Condition of plantation



Figure 2249 – General Condition of lamp post
Identification No.922678



Figure 2250 – General Condition of lamp post



Figure 2251 – General Condition of street sign /
plantation



Figure 2252 – General Condition of lamp post
Identification No.922679



Figure 2253 – General Condition of lamp post



Figure 2254 – General Condition of electricity box
Identification No.145159A / S.L.C.P.1550



Figure 2255 – General Condition of electricity box
Identification No. S145159



Figure 2256 – General Condition of electricity box



Figure 2257 – General Condition of electricity sub-
station Identification No. 35069



Figure 2258 – General Condition of electricity sub-
station Identification No. 35069



Figure 2259 – General Condition of electricity sub-
station Identification No. 35069



Figure 2260 – General Condition of lamp post
Identification No. 922680



Figure 2261 – General Condition of lamp post



Figure 2262 – General Condition of lamp post
Identification No. 922681



Figure 2263 – General Condition of lamp post



Figure 2264 – General Condition of street sign



Figure 2265 – General Condition of plantation



Figure 2266 – General Condition of lamp post
Identification No. 922682



Figure 2267 – General Condition of lamp post



Figure 2268 – General Condition of street sign



Figure 2269 – General Condition of street sign



Figure 2270 – General Condition of bus stop public bench



Figure 2271 – General Condition of lamp post
Identification No. 922683



Figure 2272 – General Condition of lamp post



Figure 2273 – General Condition of street sign



Figure 2274 – General Condition of lamp post
Identification No. 922684



Figure 2275 – General Condition of lamp post



Figure 2276 – General Condition of lamp post
Identification No. 922685



Figure 2277 – General Condition of lamp post



Figure 2278 – General Condition of electricity box
Identification No. 142079



Figure 2279 – General Condition of electricity box
Identification No. 142079



Figure 2280 – General Condition of street sign



Figure 2281 – General Condition of lamp post
Identification No. 922686



Figure 2282 – General Condition of street sign



Figure 2283 – General Condition of lamp post



Figure 2284 – General Condition of bus stop public bench

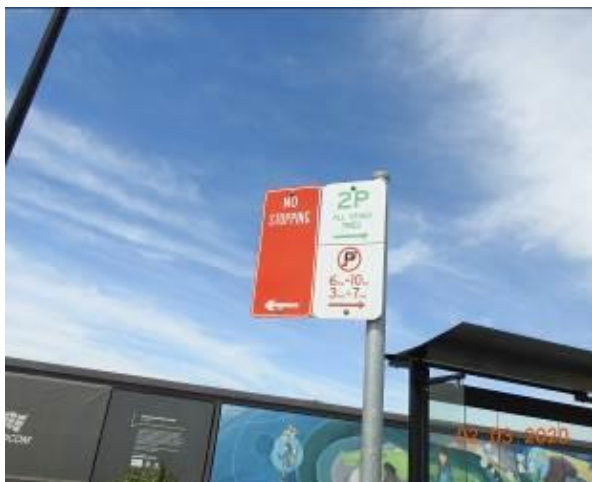


Figure 2285 – General Condition of street sign



Figure 2286 – General Condition of lamp post
Identification No. 922687



Figure 2287 – General Condition of street sign



Figure 2288 – General Condition of lamp post



Figure 2289 – General Condition of street sign



Figure 2290 – General Condition of lamp post
Identification No. 922689



Figure 2291 – General Condition of service pit



Figure 2292 – General Condition of lamp post



Figure 2293 – General Condition of electricity box
Identification No. 142083



Figure 2294 – General Condition of electricity box
Identification No. 4697



Figure 2295 – General Condition of electricity box



Comments

The section of Themeda Avenue which is associated with the subject site was inspected and photographic evidence compiled in order to depict the condition of the council assets along this particular stretch of road prior to the commencement of any work at the subject site.

The road surface of Themeda Avenue at the time of the inspection was in a good condition with no major defects.

At the same time the kerb, gutter and footpath which accompany the road way were also inspected. At the time of this inspection they were found to be in a reasonable condition. There was evidence of Crack propagation and loss of material through the kerb, gutter and footpath as well as cases of Separation and Evidence of patchwork through kerb and gutter.

The condition of the lamp posts, plantation, electricity boxes, electricity sub-stations, public benches, traffic lights, stormwater inlet pits, street signs and service pits was also inspected and were determined to be in a reasonable condition. There was evidence of material loss through service pit as well as crack propagation through stormwater inlet pit.

Refer to Appendix (E) for photographic records of the above.



Appendix F

(Car Park P1)





Figure 2296 – The following images display condition of Carpark 1



Figure 2297 – General Condition of driveway pavement



Figure 2298 – General Condition of carpark pavement



Figure 2299 – General Condition of carpark pavement



Figure 2300 – General Condition of carpark pavement



Figure 2301 – General Condition of carpark pavement



Figure 2302 – General Condition of carpark pavement



Figure 2303 – General Condition of carpark pavement



Figure 2304 – General Condition of carpark pavement



Figure 2305 – General Condition of carpark pavement



Figure 2306 – General Condition of carpark pavement



Figure 2307 – General Condition of carpark pavement



Figure 2308 – General Condition of carpark pavement



Figure 2309 – General Condition of carpark pavement



Figure 2310 – General Condition of carpark pavement



Figure 2311 – General Condition of carpark pavement



Figure 2312 – General Condition of carpark pavement



Figure 2313 – General Condition of carpark pavement



Figure 2314 – General Condition of carpark pavement



Figure 2315 – General Condition of carpark pavement



Figure 2316 – General Condition of carpark pavement



Figure 2317 – General Condition of carpark pavement



Figure 2318 – General Condition of carpark pavement



Figure 2319 – General Condition of carpark pavement



Figure 2320 – General Condition of carpark pavement



Figure 2321 – General Condition of carpark pavement



Figure 2322 – General Condition of carpark pavement



Figure 2323 – General Condition of carpark pavement



Figure 2324 – General Condition of carpark pavement



Figure 2325 – General Condition of carpark pavement



Figure 2326 – General Condition of carpark pavement



Figure 2327 – General Condition of carpark pavement



Figure 2328 – General Condition of carpark pavement



Figure 2329 – General Condition of carpark pavement



Figure 2330 – General Condition of carpark pavement



Figure 2331 – General Condition of carpark pavement



Figure 2332 – General Condition of carpark pavement



Figure 2333 – General Condition of carpark pavement



Figure 2334 – General Condition of carpark pavement



Figure 2335 – General Condition of carpark pavement



Figure 2336 – General Condition of carpark pavement



Figure 2337 – General Condition of carpark pavement



Figure 2338 – General Condition of carpark pavement



Figure 2339 – General Condition of carpark pavement



Figure 2340 – General Condition of carpark pavement



Figure 2341 – General Condition of carpark pavement



Figure 2342 – General Condition of carpark pavement



Figure 2343 – General Condition of carpark pavement



Figure 2344 – General Condition of carpark pavement



Figure 2345 – General Condition of carpark pavement



Figure 2346 – General Condition of carpark pavement



Figure 2347 – General Condition of carpark pavement



Figure 2348 – General Condition of carpark pavement



Figure 2349 – General Condition of carpark pavement



Figure 2350 – General Condition of carpark pavement



Figure 2351 – General Condition of carpark pavement



Figure 2352 – General Condition of carpark pavement



Figure 2353 – General Condition of carpark pavement



Figure 2354 – General Condition of carpark pavement



Figure 2355 – General Condition of carpark pavement



Figure 2356 – General Condition of carpark pavement



Figure 2357 – General Condition of carpark pavement



Figure 2358 – General Condition of carpark pavement



Figure 2359 – General Condition of carpark pavement



Figure 2360 – General Condition of carpark pavement



Figure 2361 – Crack propagation through carpark pavement



Figure 2362 – General Condition of carpark pavement



Figure 2363 – General Condition of carpark pavement



Figure 2364 – General Condition of carpark pavement



Figure 2365 – General Condition of carpark pavement



Figure 2366 – General Condition of carpark pavement



Figure 2367 – General Condition of carpark pavement



Figure 2368 – General Condition of carpark pavement



Figure 2369 – General Condition of carpark pavement



Figure 2370 – General Condition of carpark pavement



Figure 2371 – General Condition of carpark pavement



Figure 2372 – General Condition of carpark pavement



Figure 2373 – General Condition of carpark pavement



Figure 2374 – General Condition of carpark pavement



Figure 2375 – General Condition of carpark pavement



Figure 2376 – General Condition of carpark pavement



Figure 2377 – Loss of material through carpark pavement



Figure 2378 – General Condition of carpark pavement



Figure 2379 – General Condition of carpark pavement



Figure 2380 – General Condition of carpark pavement



Figure 2381 – General Condition of carpark pavement



Figure 2382 – General Condition of carpark pavement



Figure 2383 – General Condition of carpark pavement



Figure 2384 – General Condition of carpark pavement



Figure 2385 – General Condition of carpark pavement



Figure 2386 – General Condition of carpark pavement



Figure 2387 – General Condition of carpark pavement



Figure 2388 – General Condition of carpark pavement



Figure 2389 – General Condition of carpark pavement



Figure 2390 – General Condition of carpark pavement



Figure 2391 – General Condition of carpark pavement



Figure 2392 – General Condition of carpark pavement



Figure 2393 – General Condition of carpark pavement



Figure 2394 – General Condition of carpark pavement



Figure 2395 – General Condition of carpark pavement



Figure 2396 – General Condition of carpark pavement



Figure 2397 – General Condition of carpark pavement



Figure 2398 – General Condition of carpark pavement



Figure 2399 – General Condition of carpark pavement



Figure 2400 – General Condition of street sign



Figure 2401 – General Condition of street sign



Figure 2402 – General Condition of street sign



Figure 2403 – General Condition of street sign



Figure 2404 – General Condition of street sign



Figure 2405 – General Condition of electricity box



Figure 2406 – General Condition of lamp post



Figure 2407 – General Condition of lamp post



Figure 2408 – General Condition of electricity box



Figure 2409 – General Condition of street sign



Figure 2410 – General Condition of street sign



Figure 2411 – General Condition of street sign



Figure 2412 – General Condition of lamp post



Figure 2413 – General Condition of lamp post



Figure 2414 – General Condition of lamp post



Figure 2415 – General Condition of street sign



Figure 2416 – General Condition of traffic bollard



Figure 2417 – General Condition of traffic bollard



Figure 2418 – General Condition of traffic bollard



Figure 2419 – General Condition of lamp post



Figure 2420 – General Condition of traffic bollard



Figure 2421 – General Condition of street sign



Figure 2422 – General Condition of traffic bollard



Figure 2423 – General Condition of lamp post



Figure 2424 – General Condition of traffic bollard



Figure 2425 – General Condition of street sign



Figure 2426 – General Condition of traffic bollard



Figure 2427 – General Condition of traffic bollard



Figure 2428 – General Condition of street sign



Figure 2429 – General Condition of lamp post



Figure 2430 – General Condition of lamp post



Figure 2431 – General Condition of lamp post



Figure 2432 – General Condition of lamp post



Figure 2433 – General Condition of lamp post



Figure 2434 – General Condition of lamp post



Figure 2435 – General Condition of lamp post



Figure 2436 – General Condition of street sign



Figure 2437 – General Condition of traffic bollard



Figure 2438 – General Condition of street sign



Figure 2439 – General Condition of traffic bollard



Figure 2440 – General Condition of traffic bollard



Figure 2441 – General Condition of traffic bollard



Figure 2442 – Physical damage traffic bollard



Figure 2443 – General Condition of street sign



Figure 2444 – General Condition of traffic bollard



Figure 2445 – General Condition of traffic bollard



Figure 2446 – General Condition of lamp post



Figure 2447 – General Condition of traffic bollard



Figure 2448 – General Condition of lamp post



Figure 2449 – General Condition of lamp post



Figure 2450 – General Condition of lamp post



Figure 2451 – General Condition of lamp post



Figure 2452 – General Condition of lamp post



Figure 2453 – General Condition of lamp post



Figure 2454 – General Condition of street sign



Figure 2455 – General Condition of layback



Figure 2456 – General Condition of kerb and gutter



Figure 2457 – General Condition of stormwater inlet pit



Figure 2458 – General Condition of kerb, gutter and footpath pavement



Figure 2459 – General Condition of footpath pavement



Figure 2460 – General Condition of kerb and gutter



Figure 2461 – General Condition of kerb



Figure 2462 – General Condition of kerb and gutter



Figure 2463 – General Condition of kerb and gutter



Figure 2464 – General Condition of kerb and gutter



Figure 2465 – General Condition of kerb and gutter



Figure 2466 – General Condition of kerb



Figure 2467 – Crack propagation through footpath pavement



Figure 2468 – Crack propagation through footpath pavement



Figure 2469 – General Condition of footpath pavement



Figure 2470 – General Condition of kerb and gutter



Figure 2471 – General Condition of layback and gutter



Figure 2472 – General Condition of kerb



Figure 2473 – General Condition of kerb



Figure 2474 – General Condition of kerb



Figure 2475 – General Condition of kerb and gutter



Figure 2476 – General Condition of kerb



Figure 2477 – General Condition of kerb and gutter



Figure 2478 – General Condition of kerb and gutter



Figure 2479 – General Condition of traffic island kerb



Figure 2480 – General Condition of traffic island kerb



Figure 2481 – General Condition of kerb



Figure 2482 – General Condition of kerb and gutter



Figure 2483 – General Condition of traffic island kerb



Figure 2484 – General Condition of kerb and gutter



Figure 2485 – General Condition of kerb and gutter



Figure 2486 – Crack propagation through kerb



Figure 2487 – General Condition of kerb and gutter



Figure 2488 – General Condition of kerb and gutter



Figure 2489 – Crack propagation through gutter



Figure 2490 – General Condition of stormwater inlet pit



Figure 2491 – General Condition of kerb and gutter



Figure 2492 – General Condition of traffic island kerb



Figure 2493 – General Condition of stormwater inlet pit

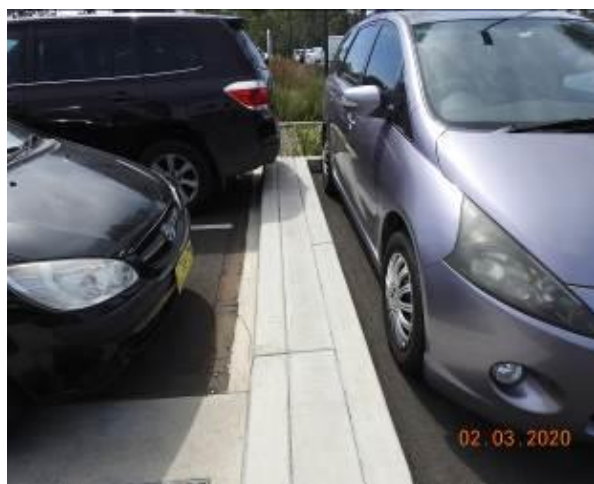


Figure 2494 – General Condition of traffic island kerb



Figure 2495 – General Condition of kerb



Figure 2496 – General Condition of traffic island kerb



Figure 2497 – General Condition of traffic island kerb



Figure 2498 – General Condition of kerb and gutter



Figure 2499 – General Condition of stormwater inlet pit



Figure 2500 – General Condition of kerb and gutter



Figure 2501 – General Condition of stormwater inlet pit



Figure 2502 – General Condition of kerb



Figure 2503 – General Condition of kerb



Figure 2504 – General Condition of traffic island kerb



Figure 2505 – General Condition of kerb



Figure 2506 – General Condition of kerb



Figure 2507 – Crack propagation and loss of material through kerb



Figure 2508 – General Condition of kerb



Figure 2509 – Crack propagation through kerb



Comments

The property Tallawong station – car park 1, is the neighbouring property to our client's site. It was photographed and inspected prior to any construction works on the subject site and was found to be in a reasonable condition. The property serves as a car park.

The road pavement of the car park was in a reasonable condition with evidence of cracking and material loss. The kerb, gutter and footpath in the car park were also inspected, they were in a reasonable condition with evidence of cracking through the footpath pavement. As well as evidence of material loss through kerb and gutter.

The street signs, electricity boxes, lamp posts, traffic bollards and stormwater inlet pits were in a good condition.

Refer to Appendix (F) for photographic records of the above.



Appendix G

(Car Park P2)





Figure 2510 – The following images display condition of Carpark 2



Figure 2512 – Crack propagation through layback and gutter



Figure 2514 – General Condition of driveway pavement



Figure 2511 – General Condition of driveway pavement



Figure 2513 – Crack propagation through layback and gutter



Figure 2515 – Crack propagation through driveway pavement



Figure 2516 – General Condition of driveway pavement



Figure 2517 – General Condition of driveway pavement



Figure 2518 – Crack propagation through driveway pavement



Figure 2519 – Crack propagation through driveway pavement



Figure 2520 – General Condition of driveway pavement



Figure 2521 – General Condition of driveway pavement



Figure 2522 – General Condition of carpark pavement



Figure 2523 – General Condition of carpark pavement



Figure 2524 – General Condition of carpark pavement



Figure 2525 – General Condition of carpark pavement



Figure 2526 – General Condition of carpark pavement



Figure 2527 – General Condition of carpark pavement



Figure 2528 – General Condition of carpark pavement



Figure 2529 – General Condition of carpark pavement



Figure 2530 – General Condition of carpark pavement



Figure 2531 – General Condition of carpark pavement



Figure 2532 – General Condition of carpark pavement



Figure 2533 – General Condition of carpark pavement



Figure 2534 – General Condition of carpark pavement



Figure 2535 – General Condition of carpark pavement



Figure 2536 – General Condition of carpark pavement



Figure 2537 – General Condition of carpark pavement



Figure 2538 – General Condition of carpark pavement



Figure 2539 – General Condition of carpark pavement



Figure 2540 – General Condition of carpark pavement



Figure 2541 – General Condition of carpark pavement



Figure 2542 – General Condition of carpark pavement



Figure 2543 – General Condition of carpark pavement



Figure 2544 – General Condition of carpark pavement



Figure 2545 – General Condition of carpark pavement



Figure 2546 – General Condition of carpark pavement



Figure 2547 – General Condition of carpark pavement



Figure 2548 – General Condition of carpark pavement



Figure 2549 – General Condition of carpark pavement



Figure 2550 – General Condition of carpark pavement



Figure 2551 – General Condition of carpark pavement



Figure 2552 – General Condition of carpark pavement



Figure 2553 – General Condition of carpark pavement



Figure 2554 – General Condition of carpark pavement



Figure 2555 – General Condition of carpark pavement



Figure 2556 – General Condition of carpark pavement



Figure 2557 – General Condition of carpark pavement



Figure 2558 – General Condition of carpark pavement



Figure 2559 – General Condition of carpark pavement



Figure 2560 – General Condition of carpark pavement



Figure 2561 – General Condition of carpark pavement



Figure 2562 – General Condition of carpark pavement



Figure 2563 – General Condition of carpark pavement



Figure 2564 – General Condition of carpark pavement



Figure 2565 – General Condition of carpark pavement



Figure 2566 – Crack propagation through carpark pavement



Figure 2567 – General Condition of carpark pavement



Figure 2568 – General Condition of carpark pavement



Figure 2569 – General Condition of carpark pavement



Figure 2570 – General Condition of carpark pavement



Figure 2571 – General Condition of carpark pavement



Figure 2572 – General Condition of carpark pavement



Figure 2573 – General Condition of carpark pavement



Figure 2574 – General Condition of carpark pavement



Figure 2575 – General Condition of carpark pavement



Figure 2576 – General Condition of carpark pavement



Figure 2577 – General Condition of carpark pavement



Figure 2578 – General Condition of carpark pavement



Figure 2579 – General Condition of carpark pavement



Figure 2580 – General Condition of carpark pavement



Figure 2581 – General Condition of carpark pavement



Figure 2582 – General Condition of carpark pavement



Figure 2583 – General Condition of carpark pavement



Figure 2584 – General Condition of carpark pavement



Figure 2585 – General Condition of carpark pavement



Figure 2586 – General Condition of carpark pavement



Figure 2587 – General Condition of carpark pavement



Figure 2588 – General Condition of carpark pavement



Figure 2589 – General Condition of carpark pavement



Figure 2590 – General Condition of carpark pavement



Figure 2591 – General Condition of carpark pavement



Figure 2592 – General Condition of carpark pavement



Figure 2593 – General Condition of carpark pavement



Figure 2594 – General Condition of carpark pavement



Figure 2595 – General Condition of carpark pavement



Figure 2596 – General Condition of carpark pavement



Figure 2597 – General Condition of carpark pavement



Figure 2598 – General Condition of carpark pavement



Figure 2599 – General Condition of carpark pavement



Figure 2600 – General Condition of carpark pavement



Figure 2601 – General Condition of carpark pavement



Figure 2602 – General Condition of carpark pavement



Figure 2603 – General Condition of carpark pavement



Figure 2604 – General Condition of carpark pavement



Figure 2605 – General Condition of carpark pavement



Figure 2606 – General Condition of carpark pavement



Figure 2607 – General Condition of carpark pavement



Figure 2608 – General Condition of carpark pavement



Figure 2609 – General Condition of carpark pavement



Figure 2610 – General Condition of carpark pavement



Figure 2611 – General Condition of carpark pavement



Figure 2612 – General Condition of carpark pavement



Figure 2613 – General Condition of carpark pavement



Figure 2614 – General Condition of carpark pavement



Figure 2615 – General Condition of carpark pavement



Figure 2616 – General Condition of carpark pavement



Figure 2617 – General Condition of carpark pavement



Figure 2618 – General Condition of carpark pavement



Figure 2619 – General Condition of carpark pavement



Figure 2620 – Crack propagation through carpark pavement



Figure 2621 – General Condition of carpark pavement



Figure 2622 – General Condition of carpark pavement



Figure 2623 – General Condition of carpark pavement



Figure 2624 – General Condition of carpark pavement



Figure 2625 – General Condition of carpark pavement



Figure 2626 – General Condition of carpark pavement



Figure 2627 – General Condition of carpark pavement



Figure 2628 – General Condition of carpark pavement



Figure 2629 – General Condition of carpark pavement



Figure 2630 – General Condition of carpark pavement



Figure 2631 – General Condition of carpark pavement



Figure 2632 – General Condition of carpark pavement



Figure 2633 – General Condition of carpark pavement



Figure 2634 – General Condition of carpark pavement



Figure 2635 – General Condition of carpark pavement



Figure 2636 – General Condition of carpark pavement



Figure 2637 – General Condition of carpark pavement



Figure 2638 – General Condition of carpark pavement



Figure 2639 – General Condition of carpark pavement



Figure 2640 – General Condition of carpark pavement



Figure 2641 – General Condition of carpark pavement



Figure 2642 – General Condition of carpark pavement



Figure 2643 – General Condition of carpark pavement



Figure 2644 – General Condition of carpark pavement



Figure 2645 – General Condition of carpark pavement



Figure 2646 – General Condition of carpark pavement



Figure 2647 – Crack propagation through carpark pavement



Figure 2648 – General Condition of carpark pavement



Figure 2649 – Crack propagation through carpark pavement



Figure 2650 – Crack propagation through carpark pavement



Figure 2651 – Crack propagation through carpark pavement



Figure 2652 – Crack propagation through carpark pavement



Figure 2653 – Crack propagation through carpark pavement



Figure 2654 – Crack propagation through carpark pavement



Figure 2655 – Crack propagation through carpark pavement



Figure 2656 – Crack propagation through carpark pavement



Figure 2657 – General Condition of carpark pavement



Figure 2658 – General Condition of carpark pavement



Figure 2659 – General Condition of carpark pavement



Figure 2660 – General Condition of carpark pavement



Figure 2661 – General Condition of carpark pavement



Figure 2662 – General Condition of carpark pavement



Figure 2663 – General Condition of carpark pavement



Figure 2664 – General Condition of carpark pavement



Figure 2665 – General Condition of carpark pavement



Figure 2666 – General Condition of carpark pavement



Figure 2667 – General Condition of carpark pavement



Figure 2668 – General Condition of carpark pavement



Figure 2669 – General Condition of carpark pavement



Figure 2670 – General Condition of carpark pavement



Figure 2671 – General Condition of carpark pavement



Figure 2672 – General Condition of carpark pavement



Figure 2673 – General Condition of carpark pavement



Figure 2674 – General Condition of carpark pavement



Figure 2675 – General Condition of carpark pavement



Figure 2676 – General Condition of carpark pavement



Figure 2677 – General Condition of carpark pavement



Figure 2678 – General Condition of carpark pavement



Figure 2679 – General Condition of carpark pavement



Figure 2680 – General Condition of carpark pavement



Figure 2681 – General Condition of carpark pavement



Figure 2682 – General Condition of carpark pavement



Figure 2683 – General Condition of carpark pavement



Figure 2684 – General Condition of carpark pavement



Figure 2685 – General Condition of carpark pavement



Figure 2686 – General Condition of carpark pavement



Figure 2687 – General Condition of carpark pavement



Figure 2688 – General Condition of carpark pavement



Figure 2689 – General Condition of carpark pavement



Figure 2690 – General Condition of carpark pavement



Figure 2691 – General Condition of carpark pavement



Figure 2692 – General Condition of carpark pavement



Figure 2693 – General Condition of carpark pavement



Figure 2694 – General Condition of carpark pavement



Figure 2695 – General Condition of carpark pavement



Figure 2696 – General Condition of carpark pavement



Figure 2697 – General Condition of carpark pavement



Figure 2698 – General Condition of carpark pavement



Figure 2699 – General Condition of carpark pavement



Figure 2700 – General Condition of carpark pavement



Figure 2701 – General Condition of carpark pavement



Figure 2702 – General Condition of carpark pavement



Figure 2703 – General Condition of carpark pavement



Figure 2704 – General Condition of carpark pavement



Figure 2705 – General Condition of carpark pavement



Figure 2706 – Crack propagation through carpark pavement



Figure 2707 – General Condition of carpark pavement



Figure 2708 – General Condition of carpark pavement



Figure 2709 – General Condition of carpark pavement



Figure 2710 – General Condition of carpark pavement



Figure 2711 – General Condition of carpark pavement



Figure 2712 – General Condition of carpark pavement



Figure 2713 – General Condition of carpark pavement



Figure 2714 – General Condition of carpark pavement



Figure 2715 – General Condition of carpark pavement



Figure 2716 – General Condition of carpark pavement



Figure 2717 – General Condition of carpark pavement



Figure 2718 – General Condition of carpark pavement



Figure 2719 – General Condition of carpark pavement



Figure 2720 – General Condition of carpark pavement



Figure 2721 – General Condition of carpark pavement



Figure 2722 – General Condition of carpark pavement



Figure 2723 – General Condition of carpark pavement



Figure 2724 – General Condition of carpark pavement



Figure 2725 – General Condition of carpark pavement



Figure 2726 – General Condition of carpark pavement



Figure 2727 – General Condition of carpark pavement



Figure 2728 – General Condition of carpark pavement



Figure 2729 – General Condition of carpark pavement



Figure 2730 – Crack propagation through carpark pavement



Figure 2731 – General Condition of carpark pavement



Figure 2732 – General Condition of carpark pavement



Figure 2733 – General Condition of carpark pavement



Figure 2734 – General Condition of carpark pavement



Figure 2735 – General Condition of carpark pavement



Figure 2736 – General Condition of carpark pavement



Figure 2737 – General Condition of carpark pavement



Figure 2738 – General Condition of carpark pavement



Figure 2739 – General Condition of carpark pavement



Figure 2740 – General Condition of carpark pavement



Figure 2741 – General Condition of carpark pavement



Figure 2742 – General Condition of carpark pavement



Figure 2743 – General Condition of carpark pavement



Figure 2744 – General Condition of carpark pavement



Figure 2745 – Crack propagation through carpark pavement



Figure 2746 – General Condition of carpark pavement



Figure 2747 – Crack propagation through carpark pavement



Figure 2748 – General Condition of carpark pavement



Figure 2749 – Crack propagation through carpark pavement



Figure 2750 – General Condition of carpark pavement



Figure 2751 – General Condition of carpark pavement



Figure 2752 – General Condition of carpark pavement



Figure 2753 – General Condition of carpark pavement



Figure 2754 – General Condition of carpark pavement



Figure 2755 – General Condition of carpark pavement



Figure 2756 – General Condition of carpark pavement



Figure 2757 – Loss of material through carpark pavement



Figure 2758 – General Condition of street sign



Figure 2759 – General Condition of lamp post



Figure 2760 – General Condition of lamp post



Figure 2761 – General Condition of street sign



Figure 2762 – General Condition of lamp post



Figure 2763 – General Condition of street sign



Figure 2764 – General Condition of lamp post



Figure 2765 – General Condition of street sign



Figure 2766 – General Condition of lamp post



Figure 2767 – General Condition of lamp post



Figure 2768 – General Condition of plantation



Figure 2769 – General Condition of street sign



Figure 2770 – General Condition of street sign



Figure 2771 – General Condition of lamp post



Figure 2772 – General Condition of lamp post



Figure 2773 – General Condition of lamp post



Figure 2774 – General Condition of lamp post



Figure 2775 – General Condition of lamp post /
plantation



Figure 2776 – General Condition of lamp post /
plantation



Figure 2777 – General Condition of lamp post /
plantation



Figure 2778 – General Condition of lamp post /
plantation



Figure 2779 – General Condition of lamp post /
plantation



Figure 2780 – General Condition of lamp post / plantation



Figure 2781 – General Condition of street sign



Figure 2782 – General Condition of lamp post / plantation



Figure 2783 – General Condition of street sign



Figure 2784 – General Condition of kerb and gutter



Figure 2785 – Crack propagation through kerb



Figure 2786 – General Condition of stormwater inlet pit



Figure 2787 – General Condition of kerb and gutter



Figure 2788 – Crack propagation through kerb and gutter



Figure 2789 – General Condition of kerb and gutter



Figure 2790 – General Condition of stormwater inlet pit



Figure 2791 – General Condition of kerb and gutter



Figure 2792 – General Condition of traffic island kerb



Figure 2793 – General Condition of traffic island kerb and footpath pavement



Figure 2794 – General Condition of traffic island kerb and footpath pavement



Figure 2795 – General Condition of traffic island kerb and footpath pavement



Figure 2796 – General Condition of traffic island kerb and footpath pavement



Figure 2797 – General Condition of kerb and gutter



Figure 2798 – General Condition of kerb



Figure 2799 – General Condition of kerb



Figure 2800 – General Condition of kerb



Figure 2801 – General Condition of kerb and gutter



Figure 2802 – General Condition of kerb



Figure 2803 – General Condition of kerb and footpath pavement



Figure 2804 – General Condition of kerb and footpath pavement



Figure 2805 – General Condition of kerb, gutter and footpath pavement



Figure 2806 – General Condition of kerb



Figure 2807 – General Condition of kerb



Figure 2808 – General Condition of kerb



Figure 2809 – General Condition of kerb



Figure 2810 – General Condition of kerb and footpath pavement



Figure 2811 – General Condition of kerb and gutter



Figure 2812 – General Condition of stormwater inlet pit



Figure 2813 – General Condition of kerb and gutter



Figure 2814 – General Condition of stormwater inlet pit



Figure 2815 – General Condition of kerb and gutter



Figure 2816 – General Condition of kerb and gutter



Figure 2817 – General Condition of kerb and gutter



Figure 2818 – General Condition of stormwater inlet pit



Figure 2819 – General Condition of kerb



Figure 2820 – General Condition of kerb



Figure 2821 – General Condition of kerb



Figure 2822 – General Condition of kerb



Figure 2823 – General Condition of kerb



Figure 2824 – General Condition of kerb and gutter



Figure 2825 – General Condition of kerb and gutter



Figure 2826 – General Condition of kerb and gutter



Figure 2827 – General Condition of stormwater inlet pit



Figure 2828 – General Condition of kerb and gutter



Figure 2829 – General Condition of kerb and gutter



Figure 2830 – General Condition of kerb and gutter



Figure 2831 – General Condition of kerb



Figure 2832 – General Condition of kerb



Figure 2833 – General Condition of kerb and gutter



Figure 2834 – Loss of material through kerb



Figure 2835 – General Condition of kerb



Figure 2836 – General Condition of kerb



Figure 2837 – General Condition of kerb



Figure 2838 – General Condition of kerb



Figure 2839 – General Condition of kerb



Figure 2840 – General Condition of kerb



Figure 2841 – General Condition of kerb



Figure 2842 – General Condition of kerb



Figure 2843 – General Condition of kerb



Figure 2844 – General Condition of traffic island kerb



Figure 2845 – General Condition of traffic island kerb



Figure 2846 – General Condition of traffic island kerb



Figure 2847 – General Condition of traffic island kerb



Figure 2848 – General Condition of kerb



Figure 2849 – General Condition of kerb



Figure 2850 – General Condition of kerb



Figure 2851 – General Condition of kerb



Figure 2852 – General Condition of kerb



Figure 2853 – General Condition of kerb



Figure 2854 – General Condition of kerb



Figure 2855 – General Condition of kerb



Comments

The property Tallawong station – car park 2, is the neighbouring property to our client's site. It was photographed and inspected prior to any construction works on the subject site and was found to be in a reasonable condition. The property serves as a car park.

The road pavement of the car park was in a reasonable condition with evidence of cracking and material loss. The kerb, gutter and footpath in the car park were also inspected, they were in a reasonable condition with evidence of cracking through the kerb, gutter and footpath pavement. As well as evidence of material loss through kerb and gutter.

The street signs, lamp posts, traffic islands, plantation and stormwater inlet pits were in a good condition.

Refer to Appendix (G) for photographic records of the above.



Appendix H

(Car Park P3)





Figure 2856 – The following images display condition of carpark 3



Figure 2857 – General Condition of driveway pavement



Figure 2858 – General Condition of driveway pavement



Figure 2859 – General Condition of driveway pavement



Figure 2860 – Crack propagation through driveway pavement



Figure 2861 – General Condition of driveway pavement



Figure 2862 – General Condition of carpark pavement



Figure 2863 – Evidence of patchwork through carpark pavement



Figure 2864 – General Condition of carpark pavement



Figure 2865 – General Condition of carpark pavement



Figure 2866 – General Condition of carpark pavement



Figure 2867 – General Condition of carpark pavement



Figure 2868 – General Condition of carpark pavement



Figure 2869 – General Condition of carpark pavement



Figure 2870 – Crack propagation through carpark pavement



Figure 2871 – General Condition of carpark pavement



Figure 2872 – General Condition of carpark pavement



Figure 2873 – General Condition of carpark pavement



Figure 2874 – Crack propagation through carpark pavement



Figure 2875 – Crack propagation through carpark pavement



Figure 2876 – General Condition of carpark pavement

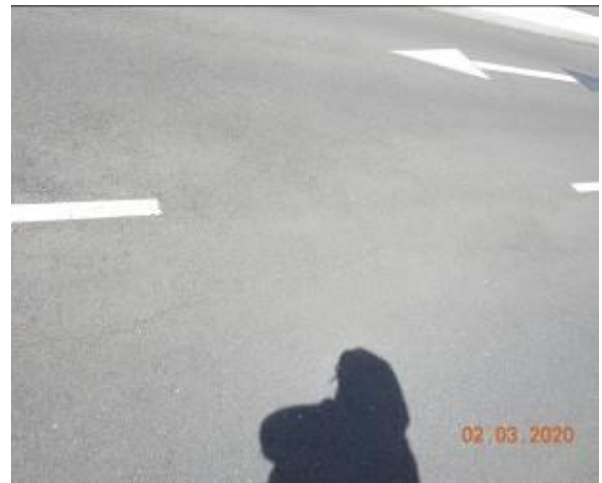


Figure 2877 – Crack propagation through carpark pavement

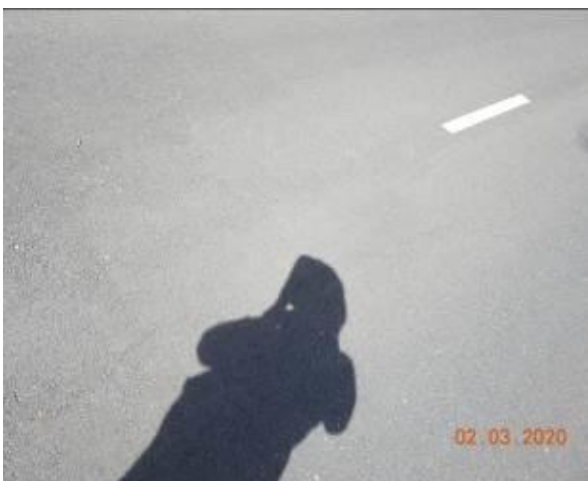


Figure 2878 – Crack propagation through carpark pavement



Figure 2879 – General Condition of carpark pavement



Figure 2880 – Crack propagation through carpark pavement



Figure 2881 – General Condition of carpark pavement



Figure 2882 – Crack propagation through carpark pavement



Figure 2883 – Crack propagation through carpark pavement



Figure 2884 – Crack propagation through carpark pavement



Figure 2885 – Crack propagation through carpark pavement



Figure 2886 – Crack propagation through carpark pavement



Figure 2887 – Crack propagation through carpark pavement



Figure 2888 – Crack propagation through carpark pavement



Figure 2889 – Crack propagation through carpark pavement



Figure 2890 – Crack propagation through carpark pavement



Figure 2891 – General Condition of carpark pavement



Figure 2892 – General Condition of carpark pavement



Figure 2893 – General Condition of carpark pavement



Figure 2894 – General Condition of carpark pavement



Figure 2895 – General Condition of carpark pavement



Figure 2896 – General Condition of carpark pavement



Figure 2897 – General Condition of carpark pavement



Figure 2898 – General Condition of carpark pavement



Figure 2899 – Crack propagation through carpark pavement



Figure 2900 – General Condition of carpark pavement



Figure 2901 – General Condition of carpark pavement



Figure 2902 – General Condition of carpark pavement



Figure 2903 – General Condition of carpark pavement



Figure 2904 – General Condition of carpark pavement



Figure 2905 – General Condition of carpark pavement



Figure 2906 – General Condition of carpark pavement



Figure 2907 – General Condition of carpark pavement



Figure 2908 – General Condition of carpark pavement



Figure 2909 – General Condition of carpark pavement



Figure 2910 – General Condition of carpark pavement



Figure 2911 – General Condition of carpark pavement



Figure 2912 – Crack propagation through carpark pavement



Figure 2913 – Crack propagation through carpark pavement



Figure 2914 – General Condition of carpark pavement



Figure 2915 – General Condition of carpark pavement



Figure 2916 – General Condition of carpark pavement



Figure 2917 – General Condition of carpark pavement



Figure 2918 – General Condition of carpark pavement



Figure 2919 – Loss of material through carpark pavement



Figure 2920 – General Condition of carpark pavement



Figure 2921 – General Condition of carpark pavement



Figure 2922 – General Condition of carpark pavement



Figure 2923 – General Condition of carpark pavement



Figure 2924 – General Condition of carpark pavement



Figure 2925 – General Condition of carpark pavement



Figure 2926 – General Condition of carpark pavement



Figure 2927 – General Condition of carpark pavement



Figure 2928 – General Condition of carpark pavement



Figure 2929 – General Condition of carpark pavement



Figure 2930 – General Condition of carpark pavement



Figure 2931 – General Condition of carpark pavement



Figure 2932 – General Condition of carpark pavement



Figure 2933 – General Condition of carpark pavement



Figure 2934 – General Condition of carpark pavement



Figure 2935 – General Condition of carpark pavement



Figure 2936 – General Condition of carpark pavement



Figure 2937 – Crack propagation through carpark pavement



Figure 2938 – General Condition of carpark pavement



Figure 2939 – Loss of material through carpark pavement



Figure 2940 – General Condition of carpark pavement



Figure 2941 – General Condition of carpark pavement



Figure 2942 – General Condition of carpark pavement



Figure 2943 – General Condition of carpark pavement



Figure 2944 – General Condition of carpark pavement



Figure 2945 – General Condition of carpark pavement



Figure 2946 – General Condition of carpark pavement



Figure 2947 – General Condition of carpark pavement



Figure 2948 – General Condition of carpark pavement



Figure 2949 – General Condition of carpark pavement



Figure 2950 – Crack propagation through carpark pavement



Figure 2951 – General Condition of carpark pavement



Figure 2952 – Crack propagation through carpark pavement



Figure 2953 – Crack propagation through carpark pavement



Figure 2954 – General Condition of carpark pavement



Figure 2955 – General Condition of carpark pavement



Figure 2956 – General Condition of carpark pavement



Figure 2957 – General Condition of carpark pavement



Figure 2958 – Crack propagation through carpark pavement



Figure 2959 – Crack propagation through carpark pavement



Figure 2960 – General Condition of carpark pavement



Figure 2961 – General Condition of carpark pavement



Figure 2962 – General Condition of carpark pavement



Figure 2963 – General Condition of carpark pavement



Figure 2964 – General Condition of carpark pavement



Figure 2965 – General Condition of carpark pavement



Figure 2966 – General Condition of carpark pavement



Figure 2967 – General Condition of carpark pavement



Figure 2968 – General Condition of carpark pavement



Figure 2969 – General Condition of carpark pavement



Figure 2970 – General Condition of carpark pavement



Figure 2971 – Crack propagation through carpark pavement



Figure 2972 – General Condition of carpark pavement



Figure 2973 – General Condition of carpark pavement



Figure 2974 – General Condition of carpark pavement



Figure 2975 – General Condition of carpark pavement



Figure 2976 – General Condition of carpark pavement



Figure 2977 – General Condition of carpark pavement



Figure 2978 – General Condition of carpark pavement



Figure 2979 – General Condition of carpark pavement



Figure 2980 – General Condition of carpark pavement



Figure 2981 – General Condition of carpark pavement



Figure 2982 – General Condition of carpark pavement



Figure 2983 – General Condition of carpark pavement



Figure 2984 – General Condition of carpark pavement



Figure 2985 – General Condition of carpark pavement



Figure 2986 – General Condition of carpark pavement



Figure 2987 – General Condition of carpark pavement



Figure 2988 – General Condition of carpark pavement



Figure 2989 – General Condition of carpark pavement



Figure 2990 – General Condition of carpark pavement



Figure 2991 – General Condition of carpark pavement



Figure 2992 – General Condition of carpark pavement



Figure 2993 – General Condition of carpark pavement



Figure 2994 – General Condition of carpark pavement



Figure 2995 – General Condition of carpark pavement



Figure 2996 – Loss of material through carpark pavement



Figure 2997 – General Condition of lamp post / plantation



Figure 2998 – General Condition of lamp post / plantation



Figure 2999 – General Condition of lamp post / plantation



Figure 3000 – General Condition of lamp post / plantation



Figure 3001 – General Condition of lamp post / plantation



Figure 3002 – General Condition of electricity box



Figure 3003 – General Condition of lamp post / plantation



Figure 3004 – General Condition of lamp post / plantation



Figure 3005 – General Condition of lamp post / plantation



Figure 3006 – General Condition of lamp post / plantation



Figure 3007 – General Condition of lamp post / plantation



Figure 3008 – General Condition of lamp post / plantation



Figure 3009 – General Condition of street sign



Figure 3010 – General Condition of street sign



Figure 3011 – General Condition of lamp post / plantation



Figure 3012 – General Condition of carpark pavement



Figure 3013 – General Condition of carpark pavement



Figure 3014 – General Condition of carpark pavement



Figure 3015 – General Condition of carpark pavement



Figure 3016 – General Condition of carpark pavement



Figure 3017 – Crack propagation through carpark pavement



Figure 3018 – Crack propagation through carpark pavement



Figure 3019 – General Condition of carpark pavement



Figure 3020 – General Condition of carpark pavement



Figure 3021 – General Condition of carpark pavement



Figure 3022 – General Condition of carpark pavement



Figure 3023 – General Condition of carpark pavement



Figure 3024 – General Condition of carpark pavement



Figure 3025 – General Condition of carpark pavement



Figure 3026 – General Condition of carpark pavement



Figure 3027 – General Condition of carpark pavement



Figure 3028 – General Condition of carpark pavement



Figure 3029 – General Condition of carpark pavement



Figure 3030 – General Condition of carpark pavement



Figure 3031 – General Condition of carpark pavement



Figure 3032 – General Condition of carpark pavement



Figure 3033 – General Condition of carpark pavement



Figure 3034 – General Condition of carpark pavement



Figure 3035 – General Condition of carpark pavement



Figure 3036 – General Condition of carpark pavement



Figure 3037 – General Condition of carpark pavement



Figure 3038 – General Condition of carpark pavement



Figure 3039 – General Condition of carpark pavement



Figure 3040 – General Condition of carpark pavement



Figure 3041 – General Condition of carpark pavement



Figure 3042 – General Condition of carpark pavement



Figure 3043 – General Condition of carpark pavement



Figure 3044 – General Condition of carpark pavement



Figure 3045 – General Condition of carpark pavement

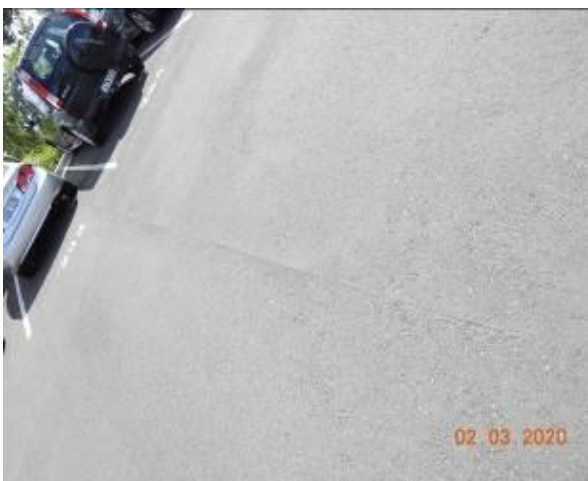


Figure 3046 – Crack propagation through carpark pavement



Figure 3047 – General Condition of carpark pavement



Figure 3048 – Loss of material through carpark pavement



Figure 3049 – General Condition of carpark pavement



Figure 3050 – General Condition of carpark pavement



Figure 3051 – General Condition of carpark pavement



Figure 3052 – General Condition of carpark pavement



Figure 3053 – General Condition of carpark pavement



Figure 3054 – General Condition of carpark pavement



Figure 3055 – General Condition of carpark pavement



Figure 3056 – General Condition of carpark pavement



Figure 3057 – General Condition of carpark pavement



Figure 3058 – Loss of material through carpark pavement



Figure 3059 – General Condition of carpark pavement



Figure 3060 – General Condition of carpark pavement



Figure 3061 – General Condition of lamp post / plantation



Figure 3062 – General Condition of lamp post / plantation



Figure 3063 – General Condition of lamp post / plantation



Figure 3064 – General Condition of lamp post / plantation



Figure 3065 – General Condition of lamp post / plantation



Figure 3066 – General Condition of lamp post /
plantation



Figure 3067 – General Condition of lamp post /
plantation



Figure 3068 – General Condition of lamp post /
plantation



Figure 3069 – General Condition of street sign



Figure 3070 – General Condition of lamp post /
plantation



Figure 3071 – General Condition of street sign



Figure 3072 – The following images display condition of carpark 3



Figure 3073 – General Condition of stormwater inlet pit



Figure 3074 – General Condition of traffic island kerb



Figure 3075 – General Condition of traffic island kerb



Figure 3076 – General Condition of kerb and gutter



Figure 3077 – General Condition of stormwater inlet pit



Figure 3078 – General Condition of traffic island kerb



Figure 3079 – General Condition of stormwater inlet pit



Figure 3080 – Crack propagation through stormwater inlet pit



Figure 3081 – General Condition of kerb and gutter



Figure 3082 – General Condition of stormwater inlet pit



Figure 3083 – General Condition of kerb



Figure 3084 – General Condition of kerb



Figure 3085 – General Condition of kerb



Figure 3086 – General Condition of kerb



Figure 3087 – General Condition of kerb



Figure 3088 – General Condition of kerb and gutter



Figure 3089 – General Condition of kerb and gutter



Figure 3090 – General Condition of stormwater inlet pit



Figure 3091 – General Condition of kerb



Figure 3092 – General Condition of kerb



Figure 3093 – General Condition of kerb and gutter



Figure 3094 – Crack propagation through stormwater inlet pit



Figure 3095 – General Condition of kerb and gutter



Figure 3096 – General Condition of kerb and gutter



Figure 3097 – General Condition of kerb



Figure 3098 – General Condition of kerb



Figure 3099 – General Condition of kerb



Figure 3100 – General Condition of kerb and gutter



Figure 3101 – General Condition of kerb and gutter



Figure 3102 – General Condition of stormwater inlet pit



Figure 3103 – General Condition of kerb and gutter



Figure 3104 – Crack propagation through kerb



Figure 3105 – General Condition of kerb



Figure 3106 – General Condition of kerb



Figure 3107 – General Condition of kerb



Figure 3108 – General Condition of kerb



Figure 3109 – General Condition of kerb



Figure 3110 – General Condition of kerb



Figure 3111 – General Condition of kerb



Figure 3112 – General Condition of kerb



Figure 3113 – General Condition of kerb



Figure 3114 – General Condition of kerb



Figure 3115 – General Condition of kerb and gutter



Figure 3116 – General Condition of stormwater inlet pit



Figure 3117 – General Condition of kerb



Figure 3118 – General Condition of kerb



Figure 3119 – General Condition of kerb



Figure 3120 – Displacement through kerb



Figure 3121 – General Condition of kerb



Figure 3122 – Displacement through kerb



Figure 3123 – General Condition of kerb



Figure 3124 – General Condition of kerb



Figure 3125 – General Condition of kerb



Comments

The property Tallawong station – car park 1, is the neighbouring property to our client's site. It was photographed and inspected prior to any construction works on the subject site and was found to be in a reasonable condition. The property serves as a car park.

The road pavement of the car park was in a reasonable condition with evidence of cracking, material loss and patchwork. The kerb and gutter in the car park were also inspected, they were in a reasonable condition with evidence of displacement through the kerb.

The street signs, electricity boxes, lamp posts, plantation and stormwater inlet pits were in a good condition.

Refer to Appendix (H) for photographic records of the above.



Record of Inspections

Address	Inspecting Engineer	Date of Inspection
Aristida Street Council Assets	A.A.&M.H	02/03/20
Conferta Avenue Council Assets	A.A.&M.H	02/03/20
Cudgrong Road Council Assets	A.A.&M.H	02/03/20
Schofields Road Council Assets	A.A.&M.H	02/03/20
Themeda Avenue Council Assets	A.A.&M.H	02/03/20
Car Park P1	A.A.&M.H	02/03/20
Car Park P2	A.A.&M.H	02/03/20
Car Park P3	A.A.&M.H	02/03/20

Prepared by	Reviewed by
N.T.	M.A.



Summary

This report serves as a record of the condition of the council assets and the neighbouring properties prior to the commencement of any works proposed at:

1-15 AND 2-12 CONFERTA AVENUE, ROUSE HIL.

DISCLAIMER OF LIABILITY: - No liability shall be accepted on account of failure of the within Report to notify any problems in any area(s) or section(s) of the subject property physically Inaccessible for inspection or to which access for Inspection is denied by or to the Consultant (including but not limited to any area(s) or section(s) so specified by the within Report).

DISCLAIMER OF LIABILITY TO THIRD PARTIES: - This Report is made solely for the use and benefit of Client named on the front of this Report and no liability or responsibility whatsoever is accepted to any third party who may rely on the Report wholly or in part. Any third party acting or relying on this Report whether in whole or in part does so at their own risk.

Please do not hesitate to contact us, should you have any further queries regarding this report.

Per:

Dr. Anthony S. Hasham

B.E., M.E., M.B.A., Ph.D., M.I.E. AUST., C. P. Eng., N.P.E.R., R.P.E.Q.
Civil/Structural Engineer, Accredited Certifier
Managing Director