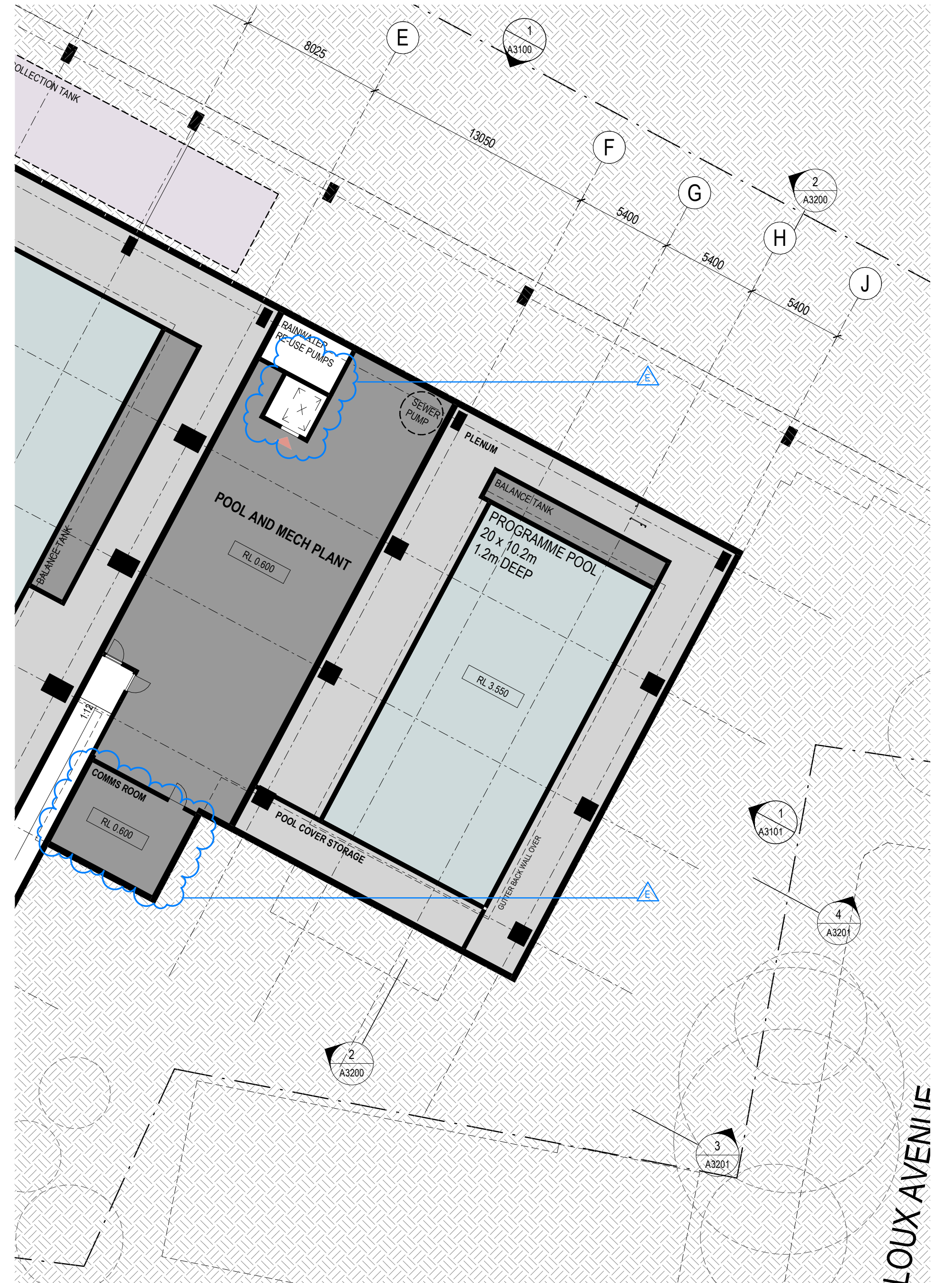
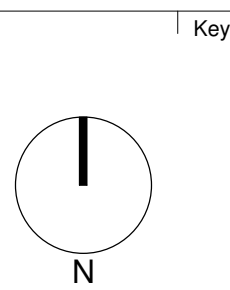


BASEMENT FLOOR PLAN
APPROVED SSDA



BASEMENT FLOOR PLAN
RESPONSE TO CONDITION B1

Revisions	No.	Date	Description	Checked	Approved
A	23032022		ISSUED TO DPIE - CONDITION B1 AMENDMENT	LP	LC



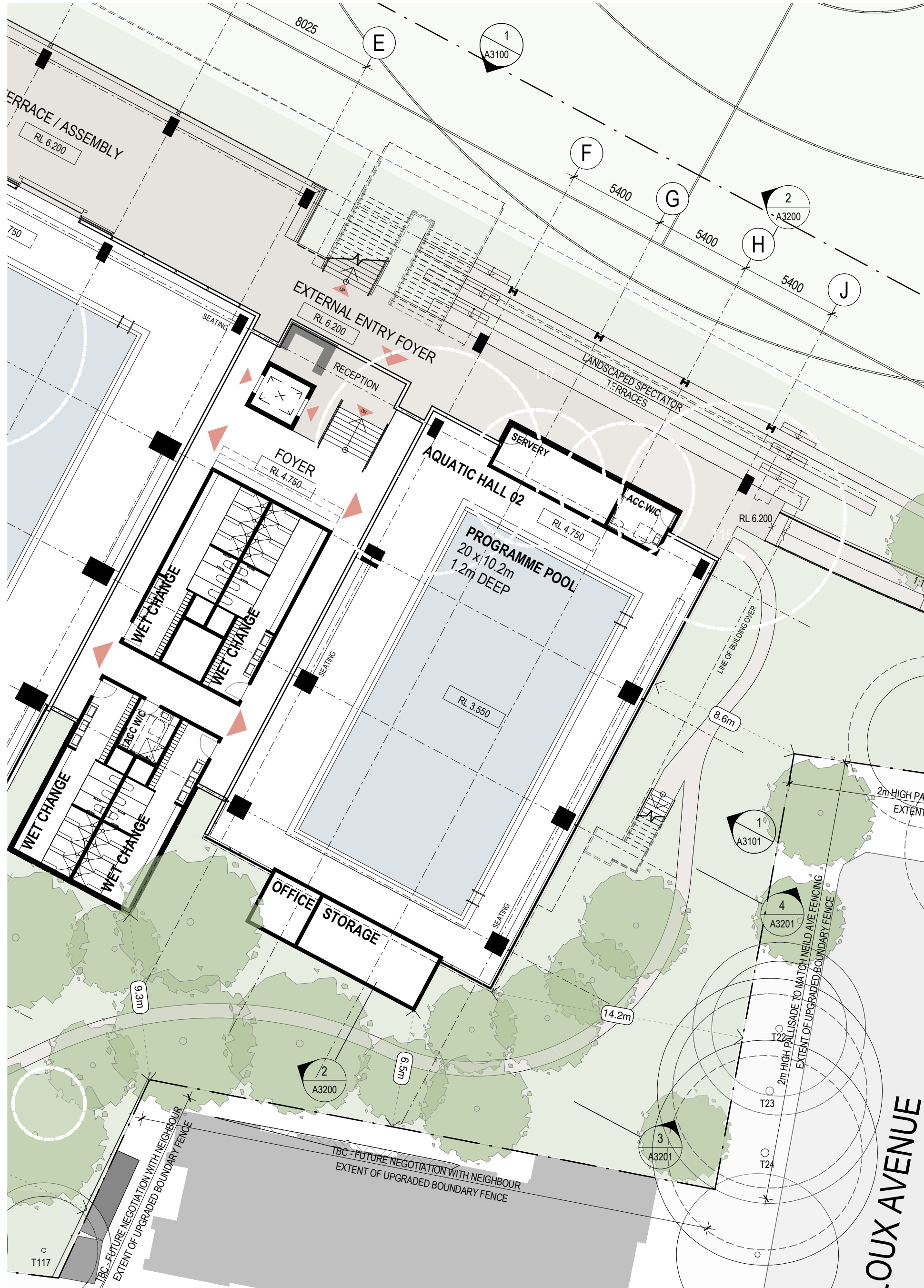
Client
Sydney Grammar School

Architect
AJ+C
ALLEN JACK+COTTIER
79 Myrtle Street Chippendale NSW 2008 AUSTRALIA
ph +61 2 9311 8222 fx +61 2 9311 8200
ABN 53 003 782 250

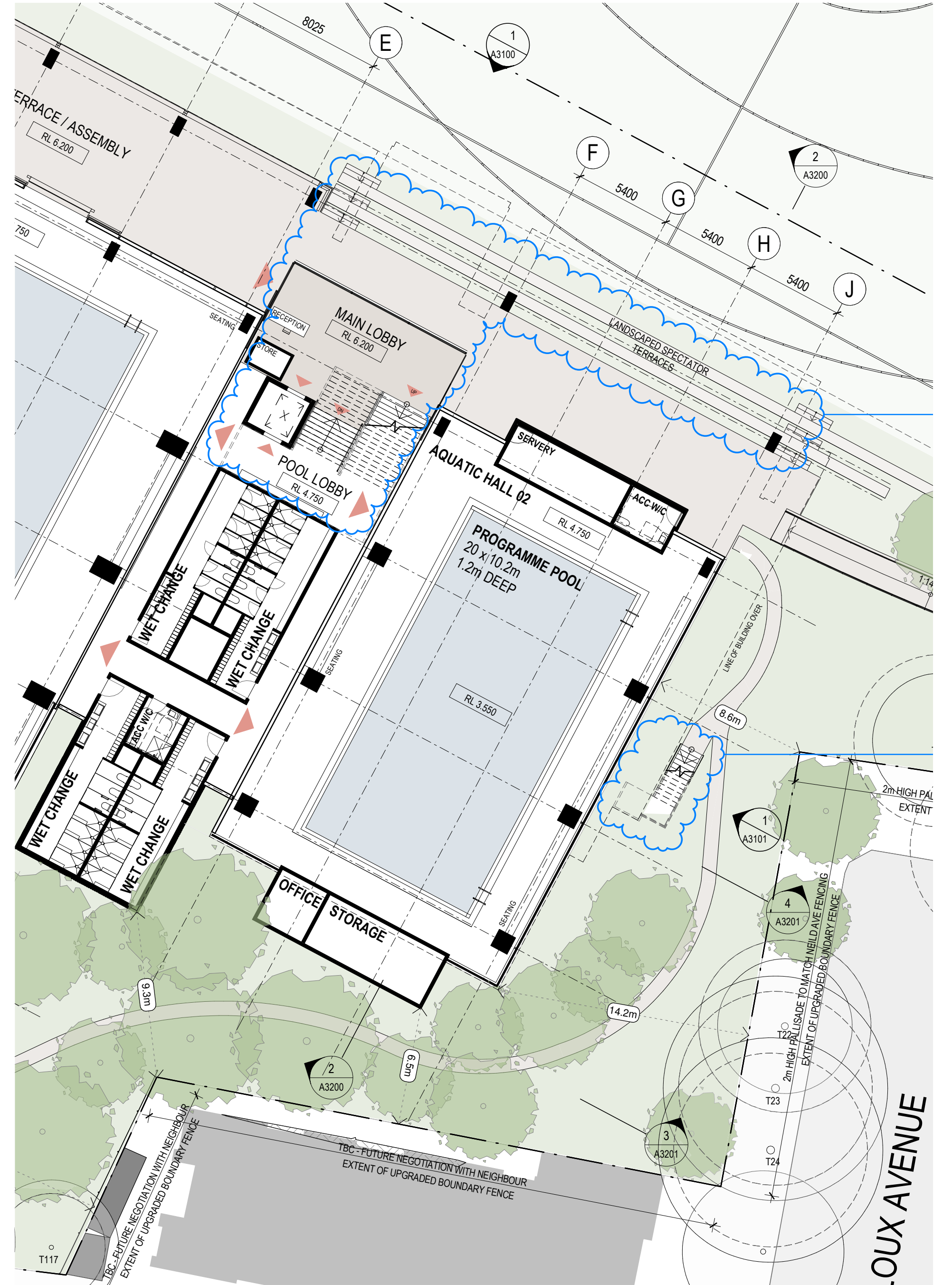
Project
SGS Weigall Sports Complex
Neild Ave, Rushcutters Bay
Proj. No. 19086

Drawing Title
**WEIGALL SPORTS COMPLEX
BUILDING 01 AND BUILDING 02
APPROVED SSDA / RESPONSE TO B1
CONDITION COMPARISON (SHEET 1)**
Sheet Status
NOT FOR CONSTRUCTION

Scale
@A1
Drawing No.
A0101
Issue
A

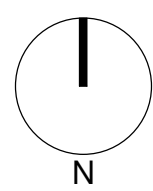


GROUND FLOOR PLAN
APPROVED SSDA



GROUND FLOOR PLAN
RESPONSE TO CONDITION B1

Revisions	No.	Date	Description	Checked	Approved
A	23/03/2022	ISSUED TO DPE - CONDITION B1 AMENDMENT	LP	LC	



Key

Client
Sydney Grammar School

Architect

AJ+C
ALLEN JACK+COTTIER

79 Myrtle Street Chippendale NSW 2008 AUSTRALIA
ph +61 2 9311 8222 fx +61 2 9311 8200
ABN 53 003 782 250

Project
SGS Weigall Sports Complex
Neild Ave, Rushcutters Bay

Proj. No. 19086

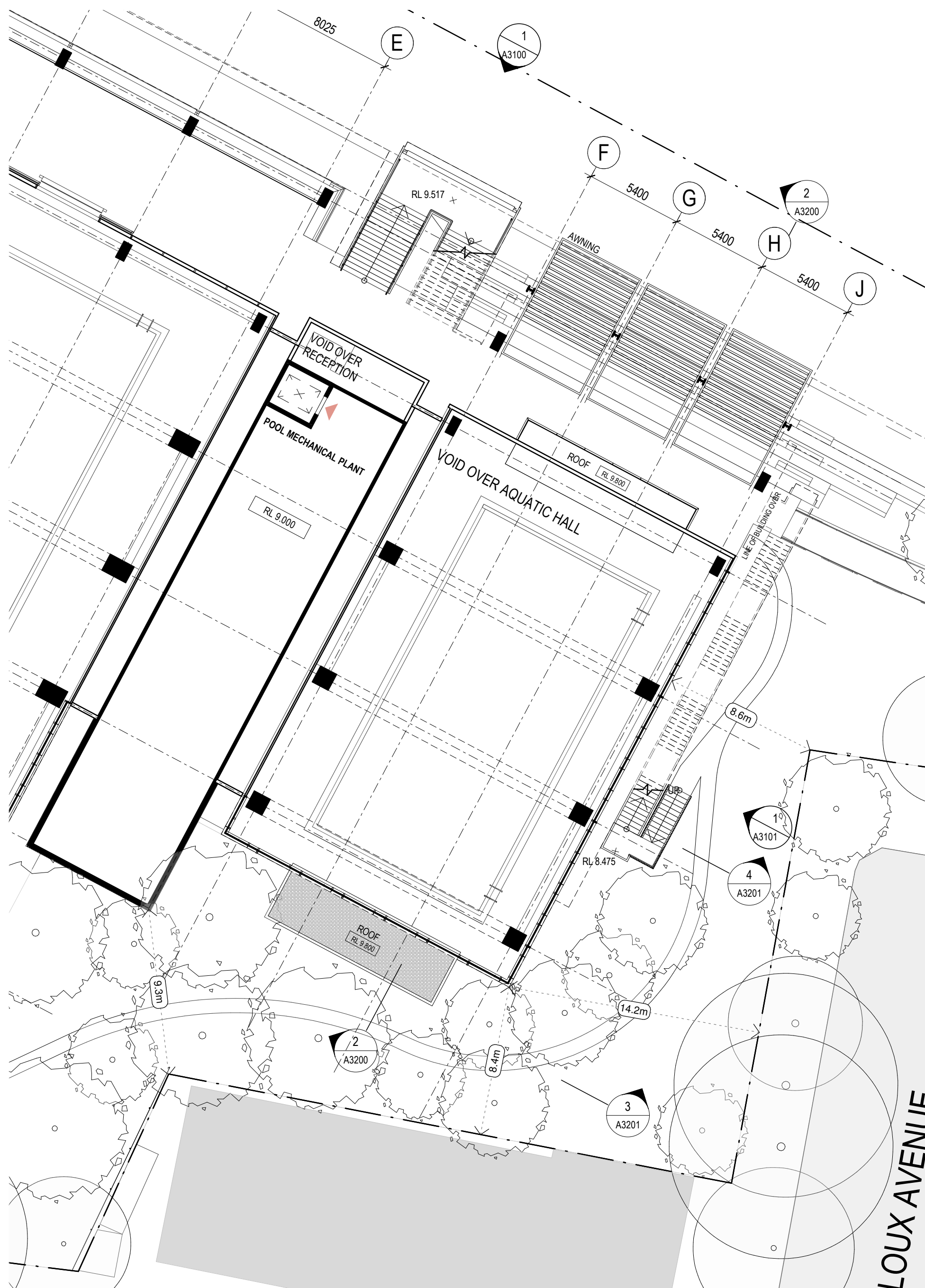
Drawing Title
**WEIGALL SPORTS COMPLEX
BUILDING 01 AND BUILDING 02
APPROVED SSDA / RESPONSE TO B1
CONDITION COMPARISON (SHEET 2)**

Sheet Status
NOT FOR CONSTRUCTION

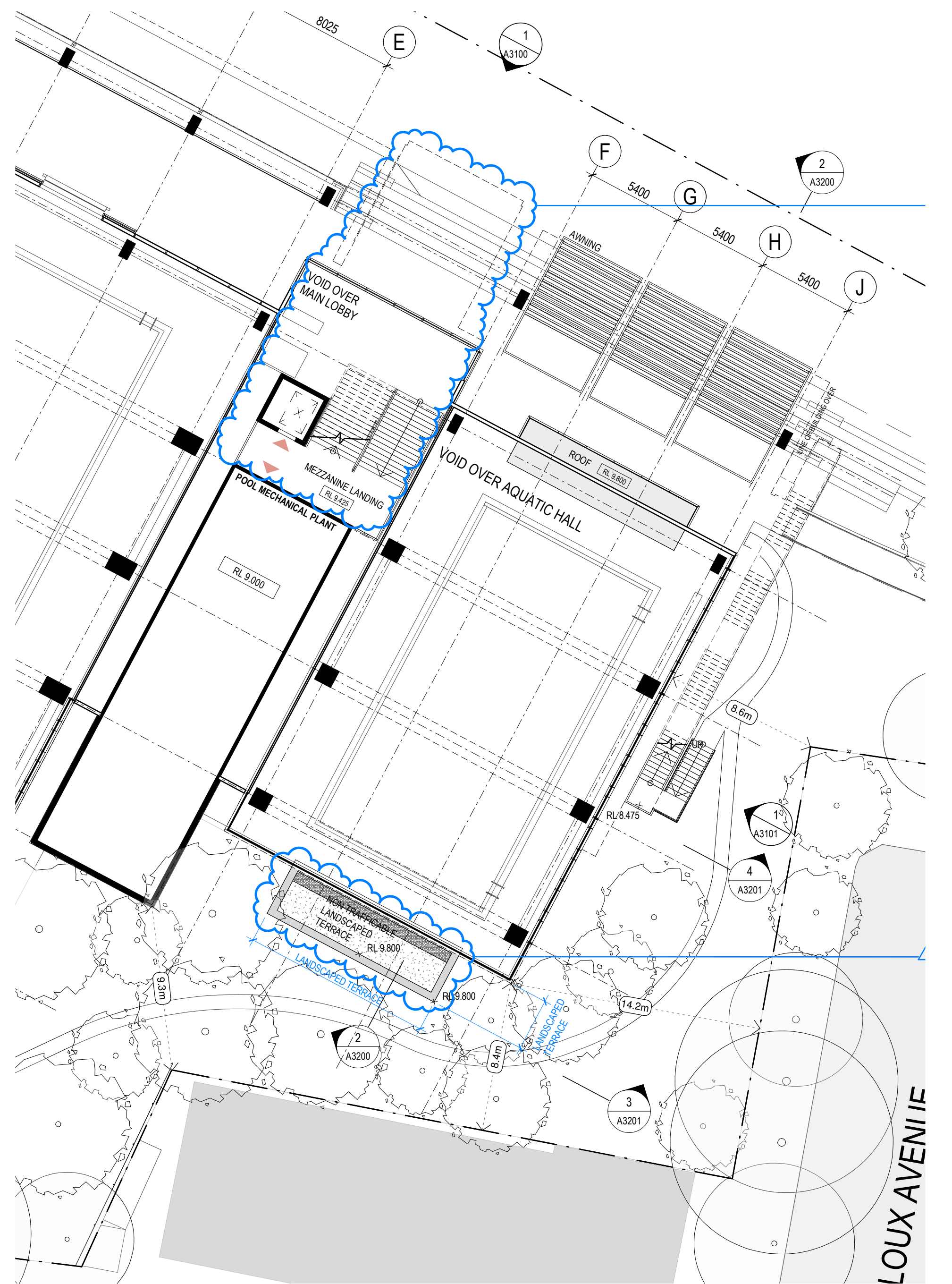
Scale
@A1

Drawing No.
A0102

Issue
A

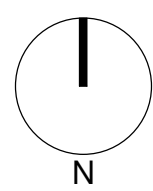


MEZZANINE PLAN
APPROVED SSDA



MEZZANINE PLAN
RESPONSE TO CONDITION B1

Revisions	No.	Date	Description	Checked	Approved
A	2303/2022		ISSUED TO DPE - CONDITION B1 AMENDMENT	LP	LC



Key

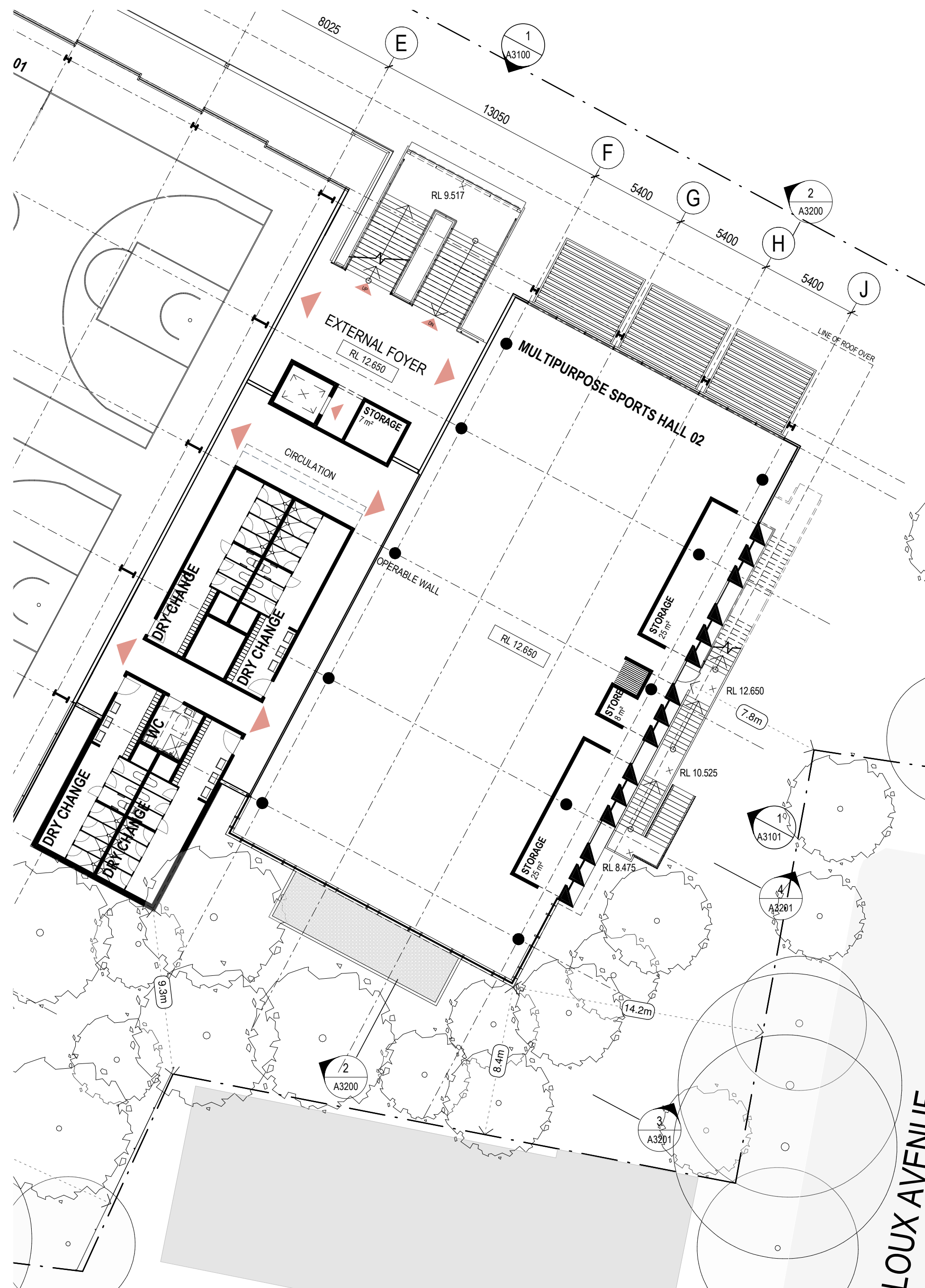
Client
Sydney Grammar School

Architect
AJ+C
ALLEN JACK+COTTIER
79 Myrtle Street Chippendale NSW 2008 AUSTRALIA
ph +61 2 9311 8222 fx +61 2 9311 8200
ABN 53 003 782 250

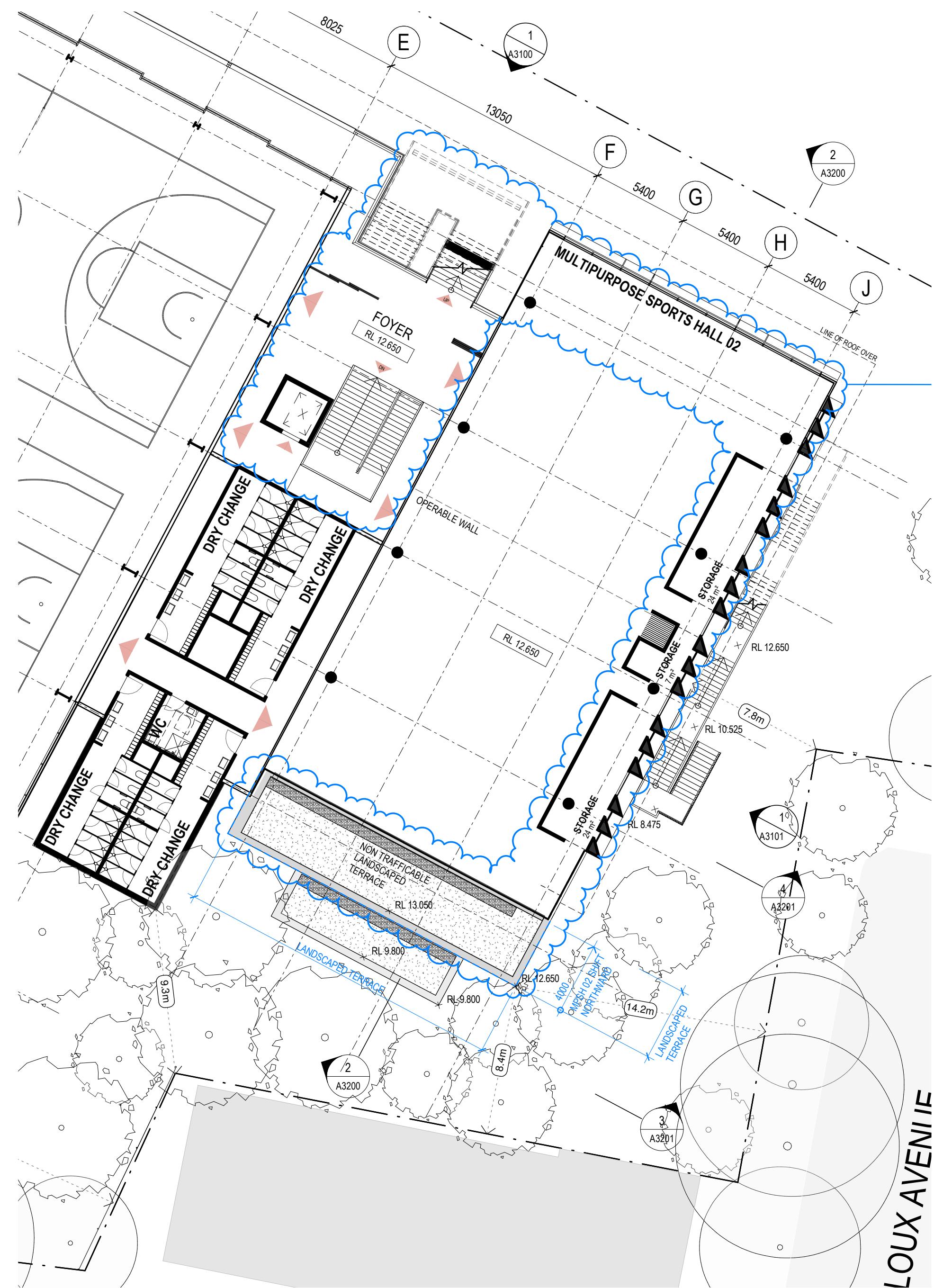
Project
SGS Weigall Sports Complex
Neild Ave, Rushcutters Bay
Proj. No. 19086

Drawing Title
**WEIGALL SPORTS COMPLEX
BUILDING 01 AND BUILDING 02
APPROVED SSDA / RESPONSE TO B1
CONDITION COMPARISON (SHEET 3)**
Sheet Status
NOT FOR CONSTRUCTION

Scale
@A1
Drawing No.
A0103
Issue
A

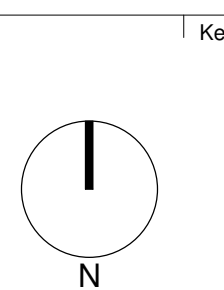


FIRST FLOOR PLAN
APPROVED SSDA



FIRST FLOOR PLAN
RESPONSE TO CONDITION B1

Revisions	No.	Date	Description	Checked	Approved
A	23/03/2022		ISSUED TO DPE - CONDITION B1 AMENDMENT	LP	LC



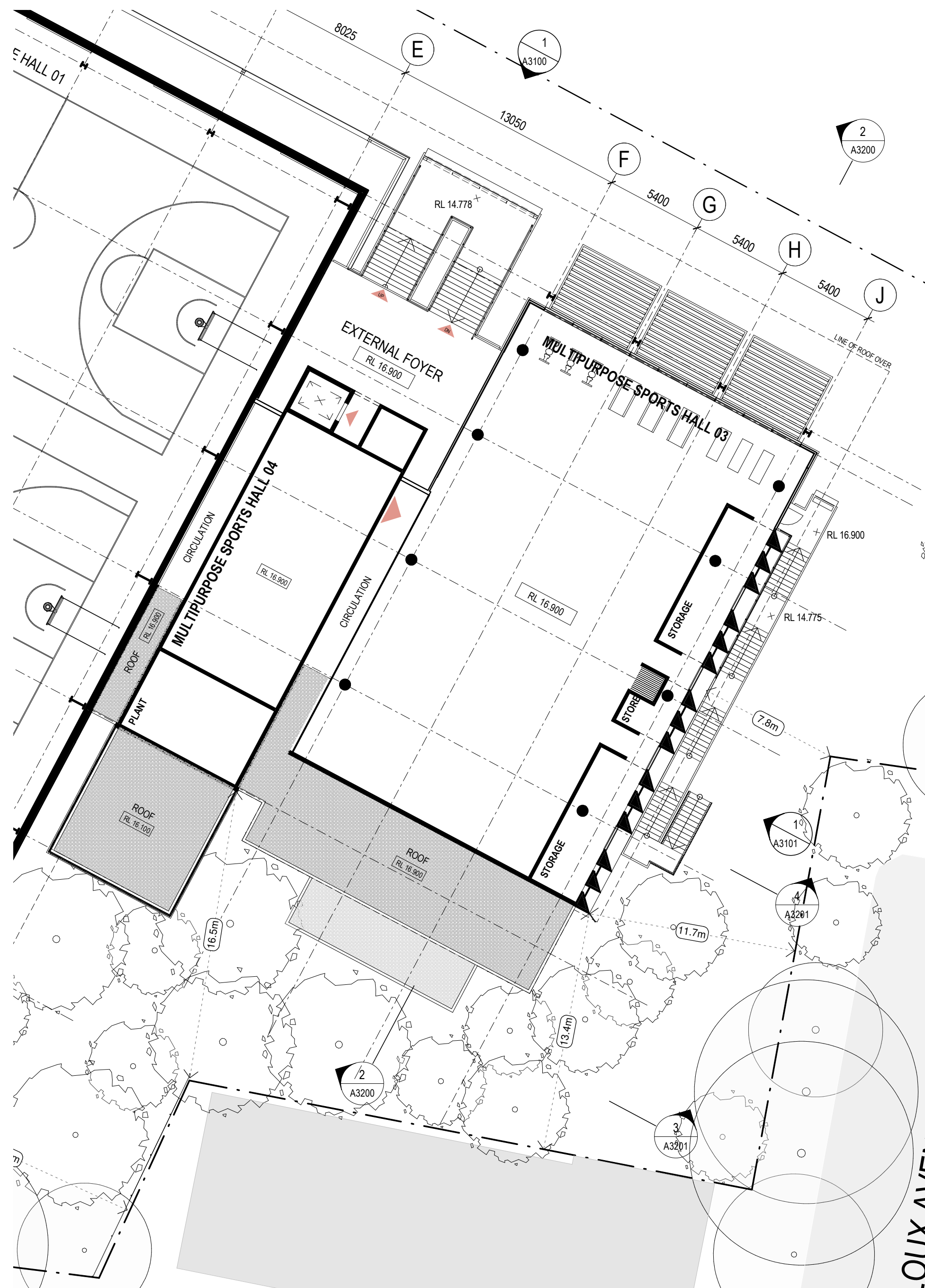
Client
Sydney Grammar School

Architect
AJ+C
ALLEN JACK+COTTIER
79 Myrtle Street Chippendale NSW 2008 AUSTRALIA
ph +61 2 9311 8222 fx +61 2 9311 8200
ABN 53 003 782 250

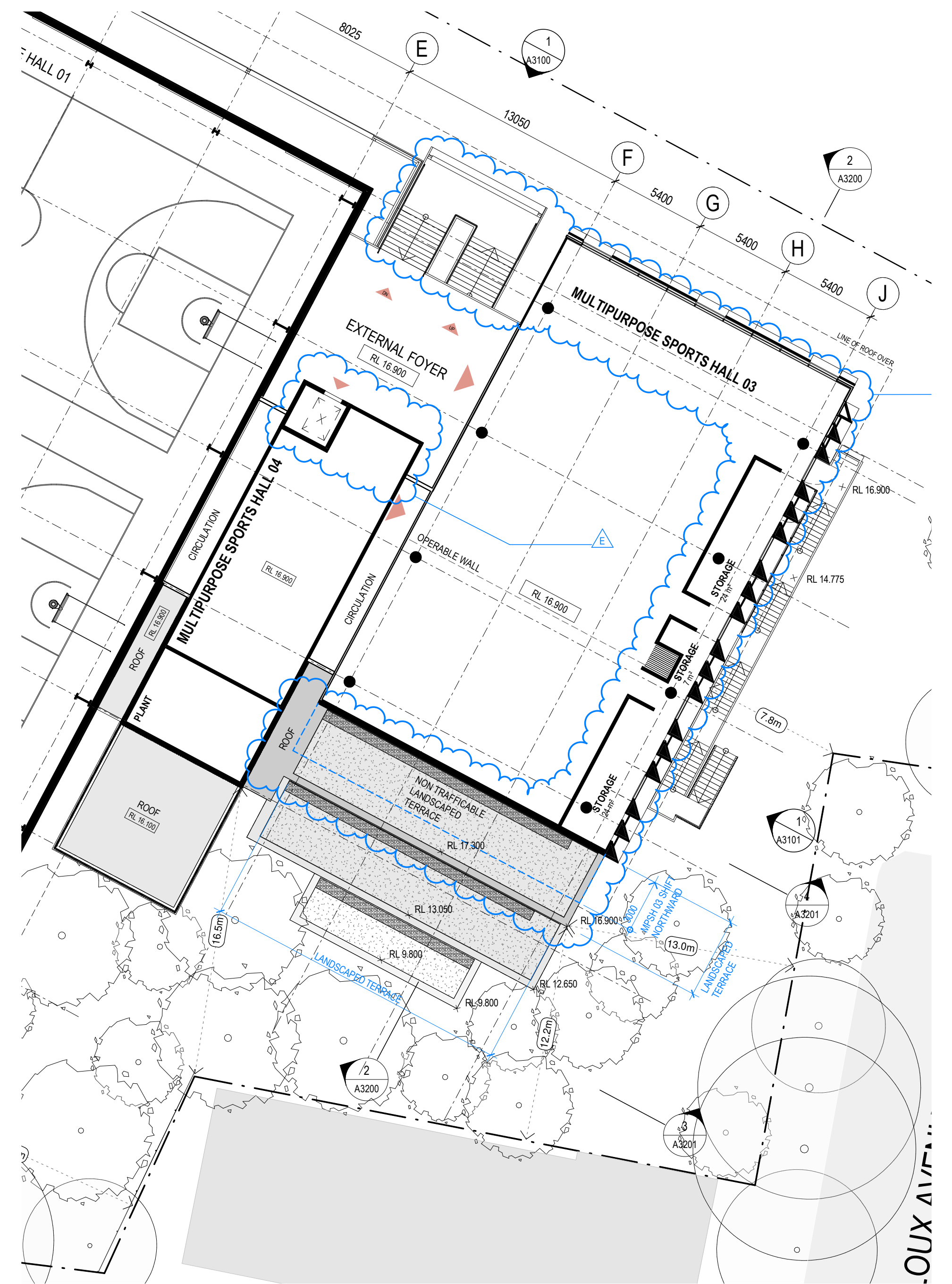
Project
SGS Weigall Sports Complex
Neild Ave, Rushcutters Bay
Proj. No. 19086

Drawing Title
**WEIGALL SPORTS COMPLEX
BUILDING 01 AND BUILDING 02
APPROVED SSDA / RESPONSE TO B1
CONDITION COMPARISON (SHEET 4)**
Sheet Status
NOT FOR CONSTRUCTION

Scale
@A1
Drawing No.
A0104
Issue
A

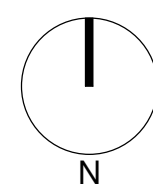


SECOND FLOOR PLAN
APPROVED SSDA



SECOND FLOOR PLAN
RESPONSE TO CONDITION B1

Revisions	No.	Date	Description	Checked	Approved
A	23032022		ISSUED TO DPE - CONDITION B1 AMENDMENT	LP	LC



Key

Client
Sydney Grammar School

Architect

AJ+C
ALLEN JACK+COTTIER

79 Myrtle Street Chippendale NSW 2008 AUSTRALIA
ph +61 2 9311 8222 fx +61 2 9311 8200
ABN 53 003 782 250

Project
SGS Weigall Sports Complex
Neild Ave, Rushcutters Bay

Proj. No. 19086

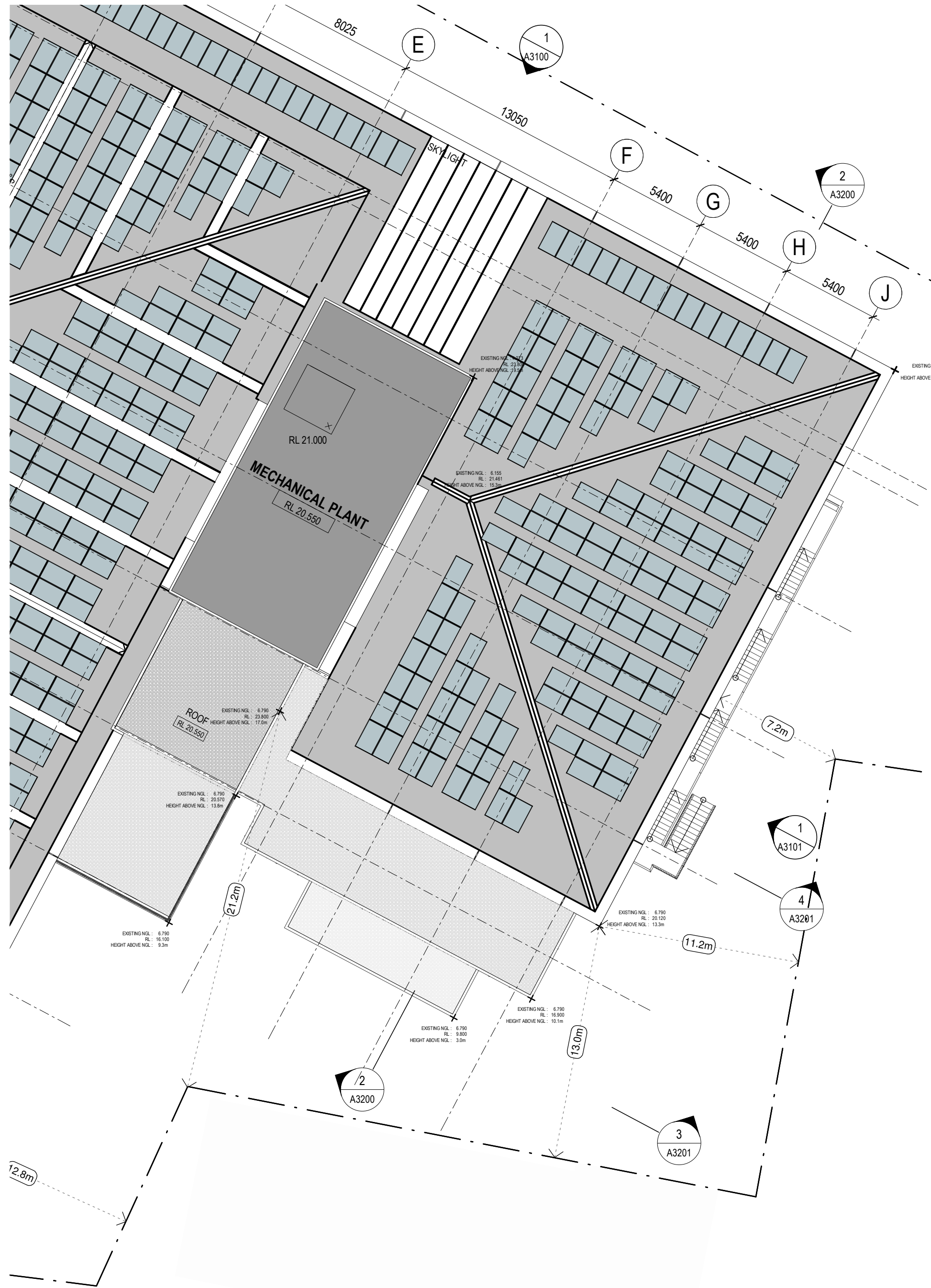
Drawing Title
**WEIGALL SPORTS COMPLEX
BUILDING 01 AND BUILDING 02
APPROVED SSDA / RESPONSE TO B1
CONDITION COMPARISON (SHEET 5)**

Sheet Status
NOT FOR CONSTRUCTION

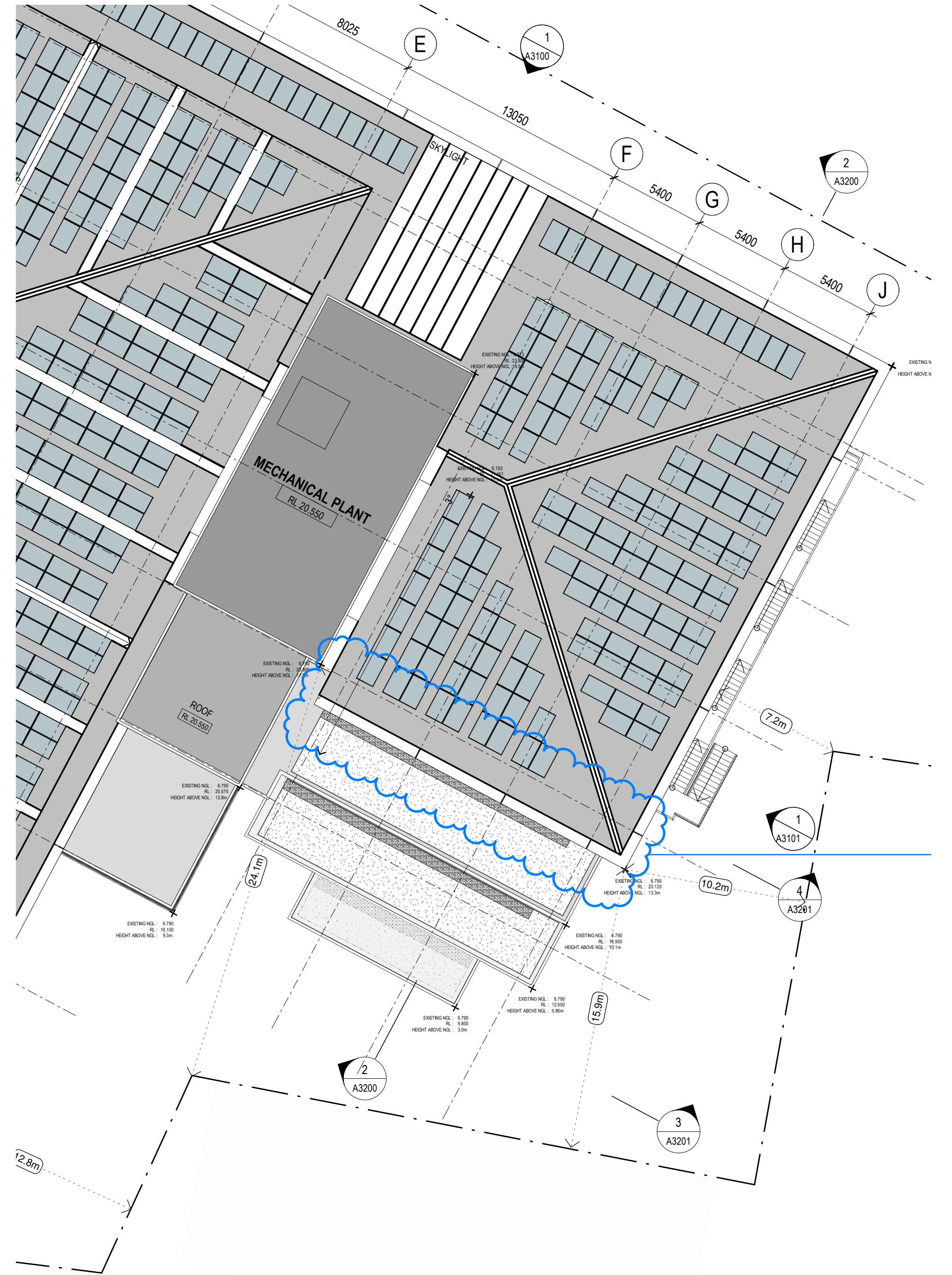
Scale
@A1

Drawing No.
A0105

Issue
A

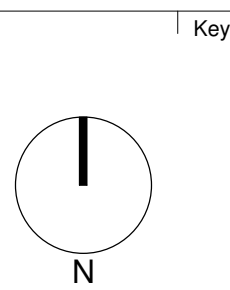


ROOF FLOOR PLAN
APPROVED SSDA



ROOF PLAN
RESPONSE TO CONDITION B1

Revisions	No.	Date	Description	Checked	Approved
A	2303/2022		ISSUED TO DPIE - CONDITION B1 AMENDMENT	LP	LC



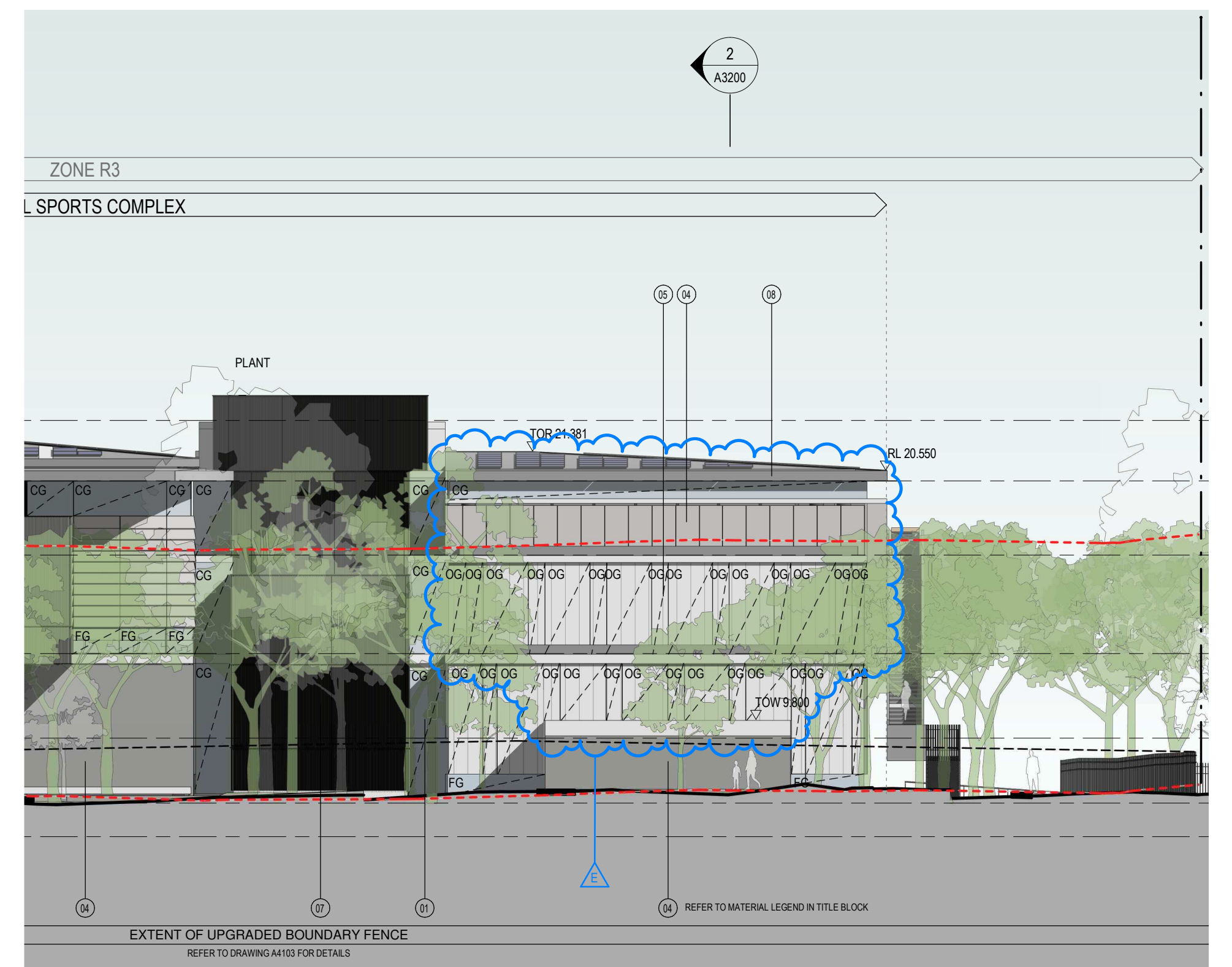
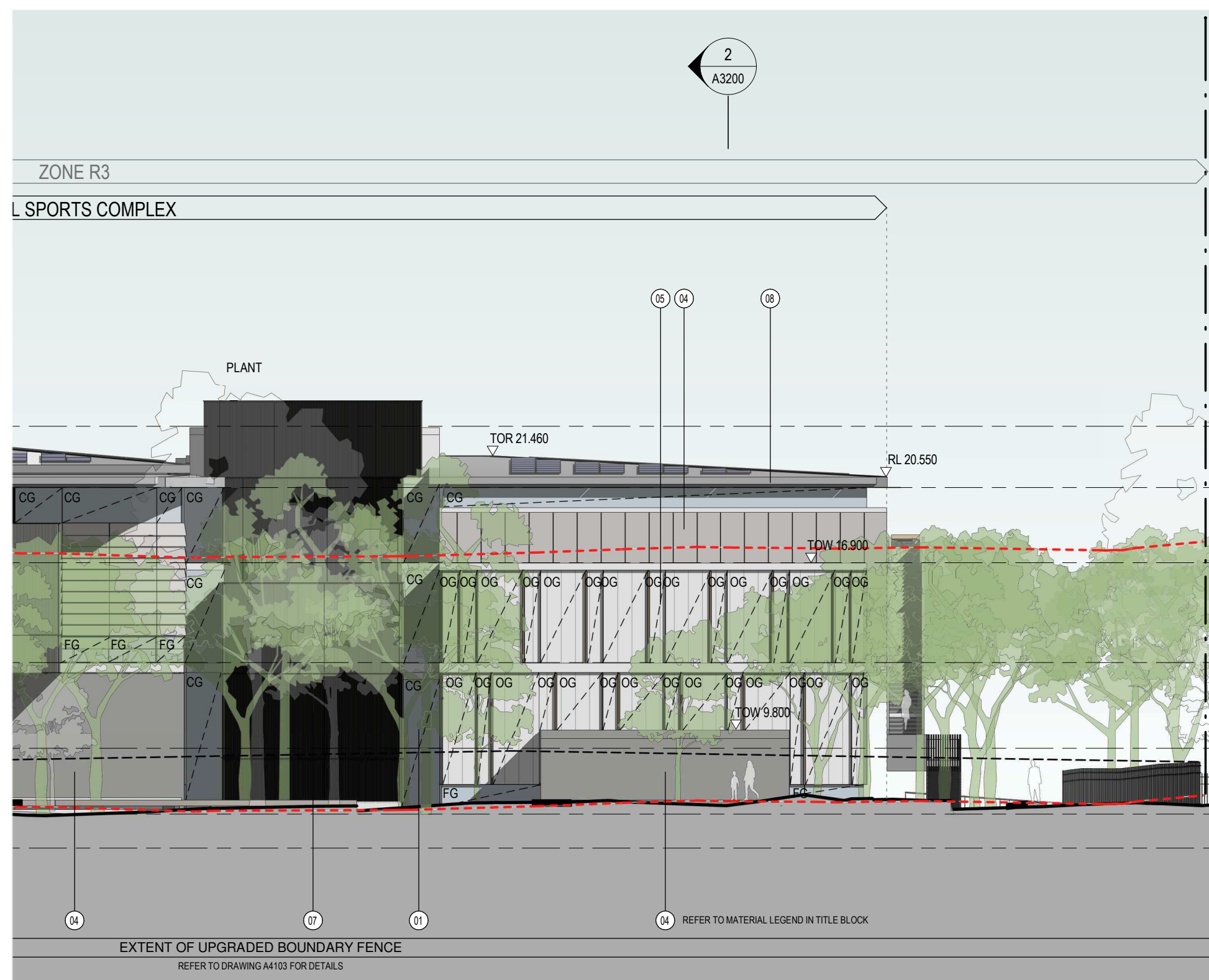
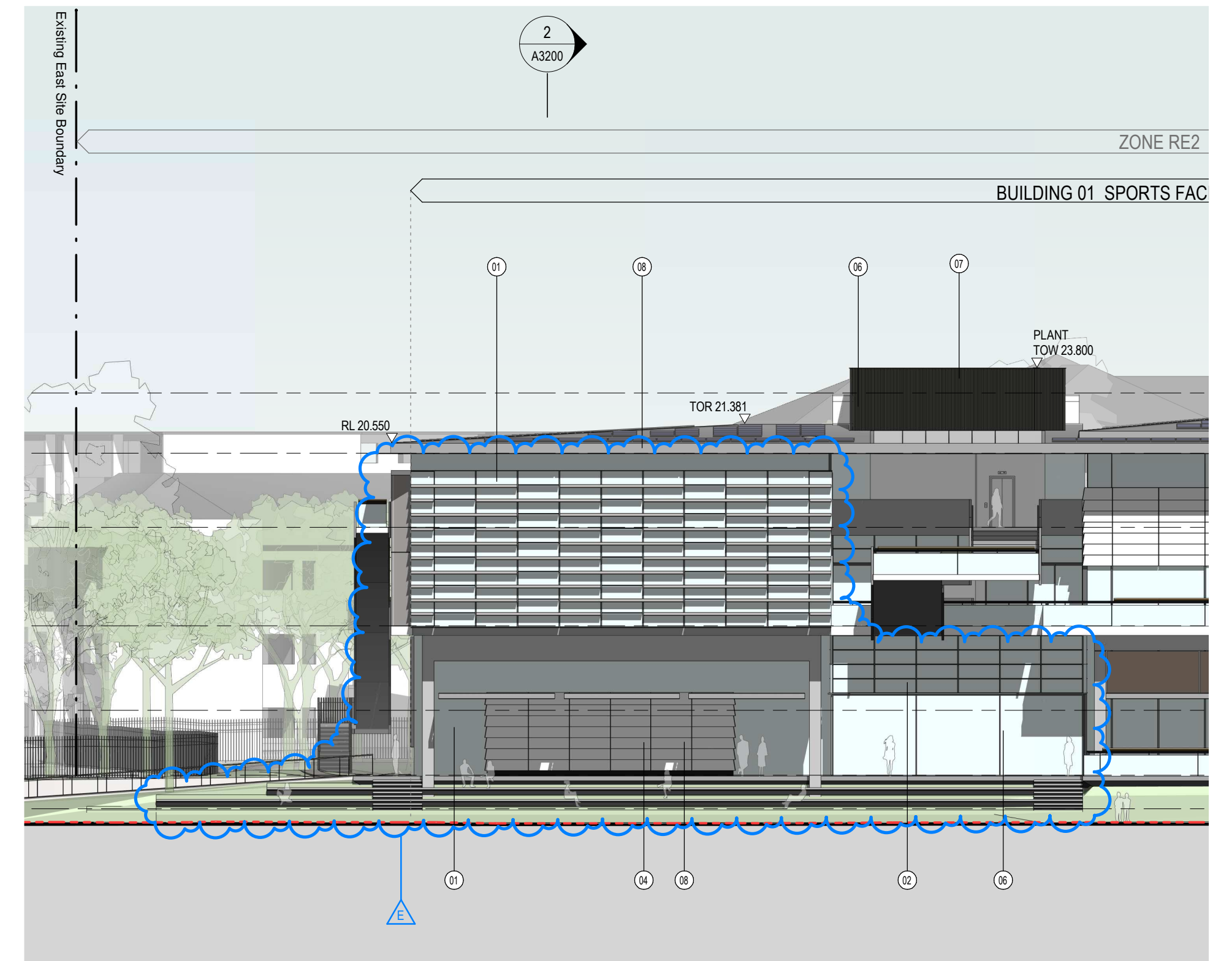
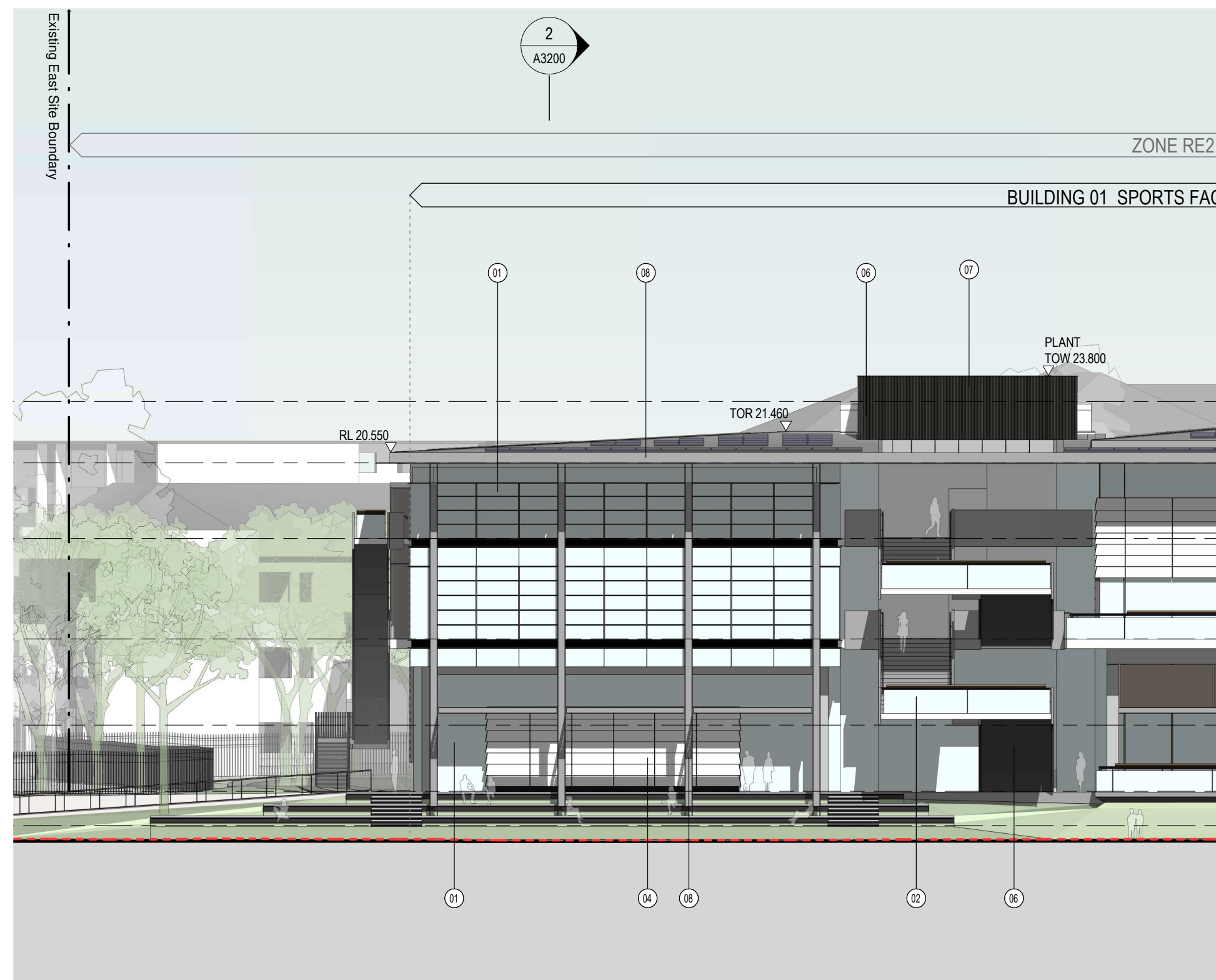
Client
Sydney Grammar School

Architect
AJ+C
ALLEN JACK+COTTIER
79 Myrtle Street Chippendale NSW 2008 AUSTRALIA
ph +61 2 9311 8222 fx +61 2 9311 8200
ABN 53 003 782 250

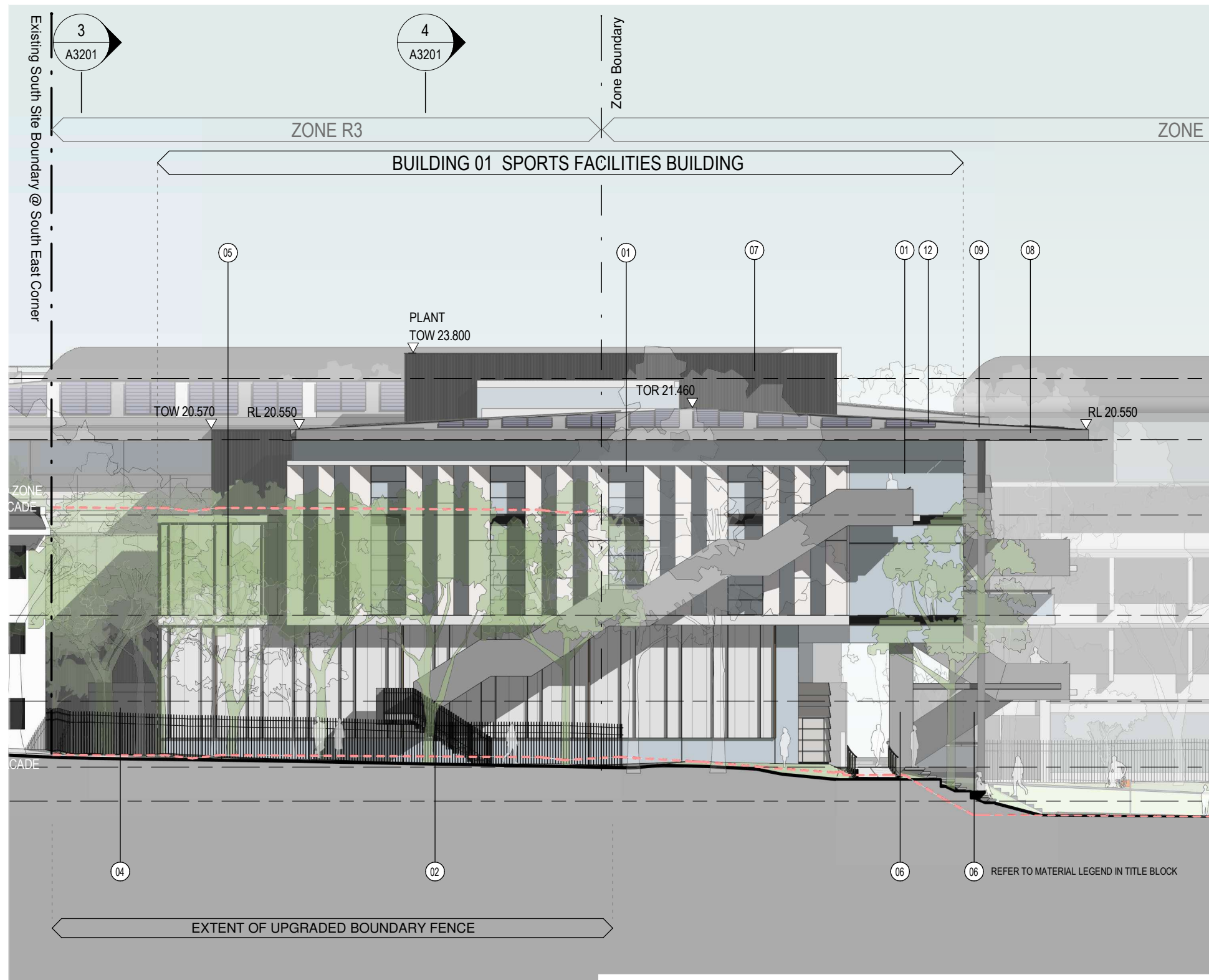
Project
SGS Weigall Sports Complex
Neild Ave, Rushcutters Bay
Proj. No. 19086

Drawing Title
**WEIGALL SPORTS COMPLEX
BUILDING 01 AND BUILDING 02
APPROVED SSDA / RESPONSE TO B1
CONDITION COMPARISON (SHEET 6)**
Sheet Status
NOT FOR CONSTRUCTION

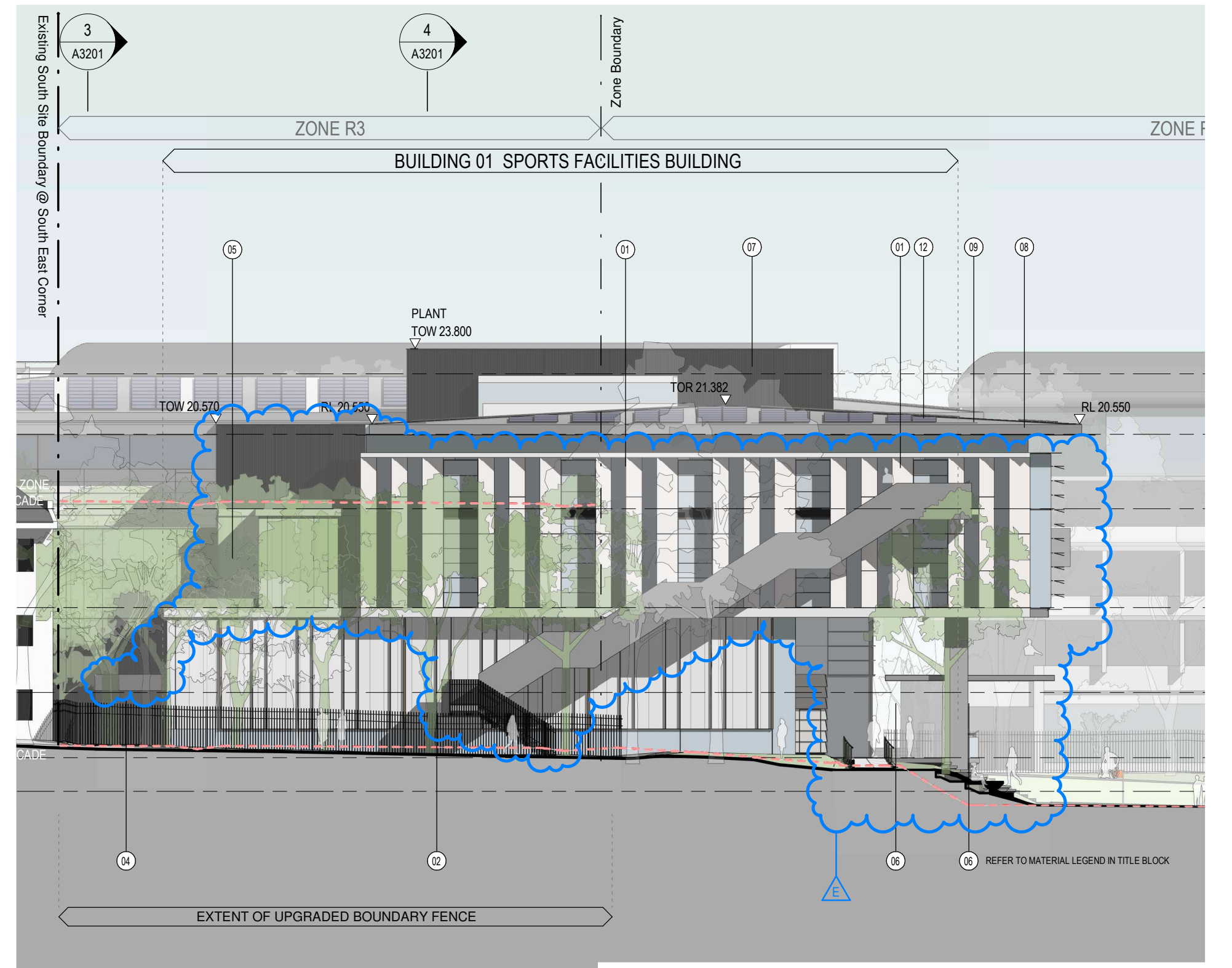
Scale
@A1
Drawing No.
A0106
Issue
A



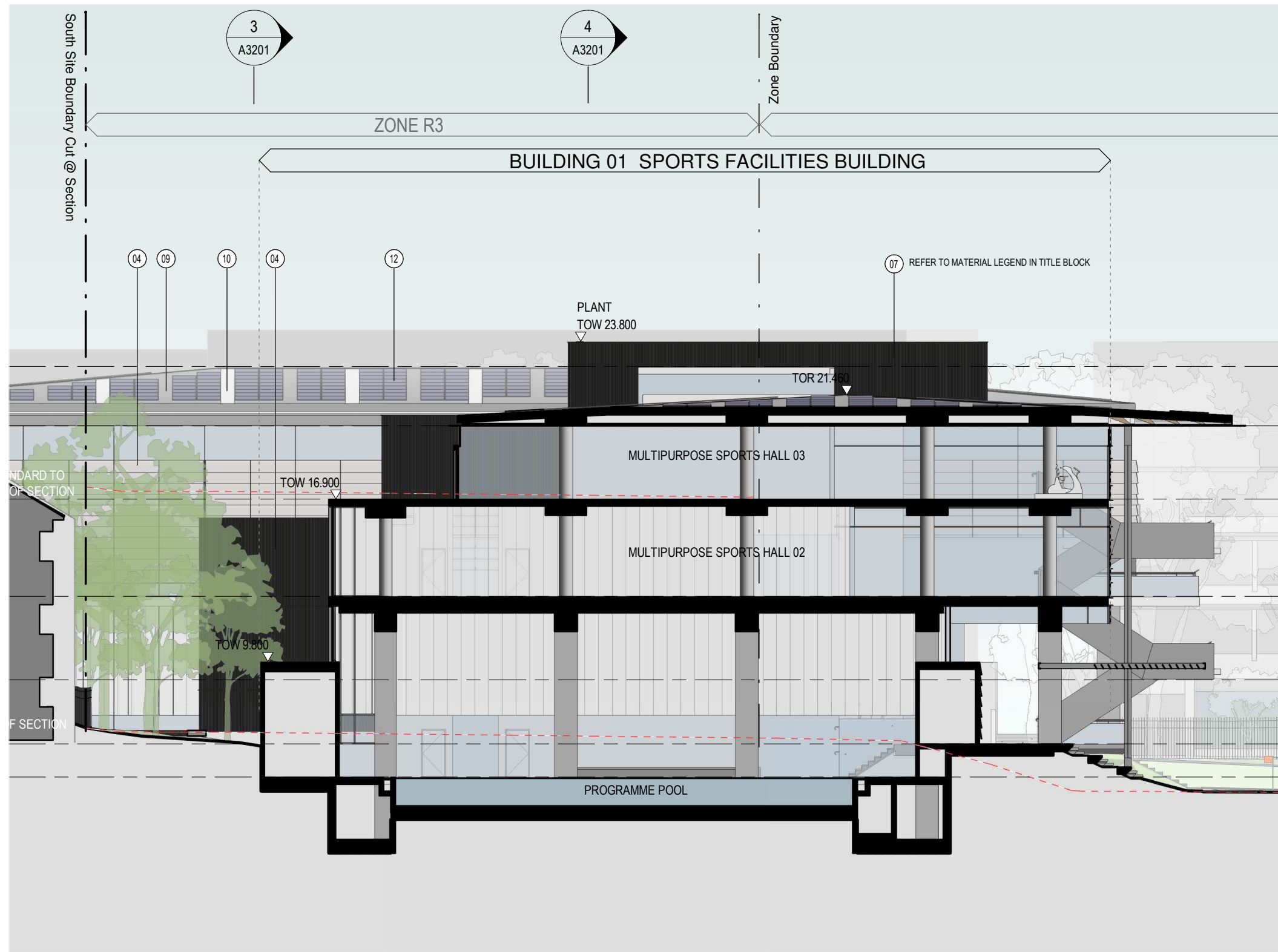
<div>Revisions</div> <table><tr><th>No.</th><th>Date</th><th>Description</th><th>Checked LP</th><th>Approved LC</th></tr><tr><td>A</td><td>29/03/2022</td><td>ISSUED TO DRIE - CONDITION B1 AMENDMENT</td><td></td><td></td></tr></table>					No.	Date	Description	Checked LP	Approved LC	A	29/03/2022	ISSUED TO DRIE - CONDITION B1 AMENDMENT			<div>Key</div>	<div>Client</div> <div>Sydney Grammar School</div>	<div>Architect</div> <div><div><div>AJ+C</div><div>ALLEN JACK+COTTIER</div></div><div>79 Myrtle Street Chippendale NSW 2008 AUSTRALIA ph +61 2 9311 8222 fx +61 2 9311 8200 ABN 53 003 782 250</div></div>	<div>Project</div> <div>SGS Weigall Sports Complex</div> <div>Neild Ave, Rushcutters Bay</div> <div>Proj. No. 19086</div>	<div>Drawing Title</div> <div>WEIGALL SPORTS COMPLEX BUILDING 01 AND BUILDING 02 APPROVED SSDA / RESPONSE TO B1 CONDITION COMPARISON (SHEET 7)</div> <div>Sheet Status</div> <div>NOT FOR CONSTRUCTION</div>	<div>Scale</div> <div>@A1</div>	<div>Drawing No.</div> <div>A0107</div>	<div>Issue</div> <div>A</div>
No.	Date	Description	Checked LP	Approved LC																		
A	29/03/2022	ISSUED TO DRIE - CONDITION B1 AMENDMENT																				



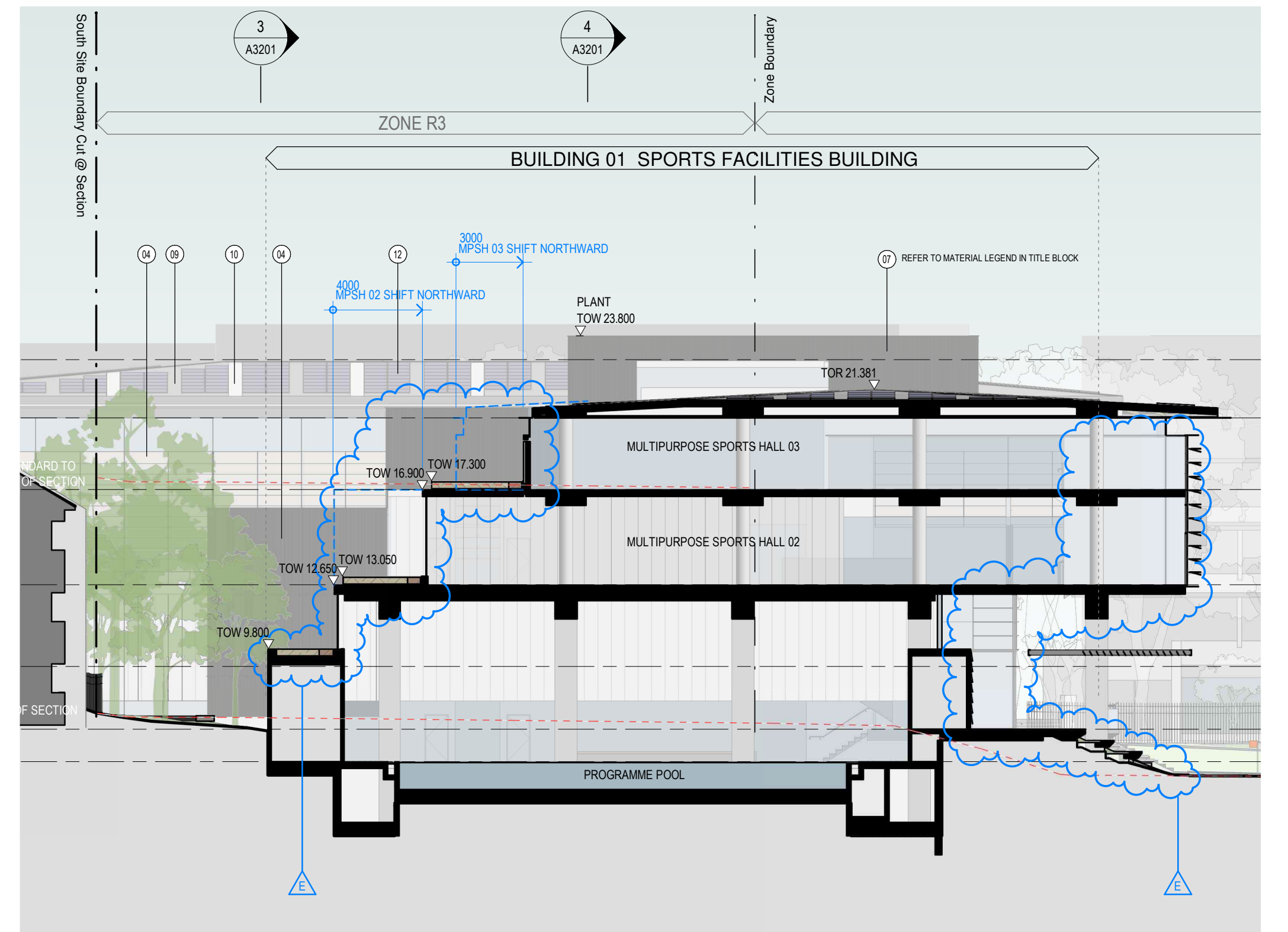
EAST ELEVATION
APPROVED SSDA



EAST ELEVATION
RESPONSE TO CONDITION B1



SECTION 02
APPROVED SSDA



SECTION 02
RESPONSE TO CONDITION B1

Revisions No. Date Description A 29/03/2022 ISSUED TO OPIE - CONDITION B1 AMENDMENT Checked LP Approved LC	Key N	Client Sydney Grammar School	Architect ALLEN JACK+COTTIER 79 Myrtle Street Chippendale NSW 2008 AUSTRALIA ph +61 2 9311 8222 fx +61 2 9311 8200 ABN 53 003 782 250	Project SGS Weigall Sports Complex Neild Ave, Rushcutters Bay Proj. No. 19086	Drawing Title WEIGALL SPORTS COMPLEX BUILDING 01 AND BUILDING 02 APPROVED SSDA / RESPONSE TO B1 CONDITION COMPARISON (SHEET 8) Sheet Status NOT FOR CONSTRUCTION	Scale @A1 Drawing No. A0108 Issue A
---	----------	---------------------------------	---	--	--	--

Do not scale drawings. Use figured dimensions only. Check & verify levels and dimensions on site prior to the commencement of any work, the preparation of shop drawings or the fabrication of components. This drawing is the copyright of Allen Jack + Cottier Architects and is protected under the Copyright Act 1968. Do not alter, reproduce or transmit in any form, or by any means without the express permission of Allen Jack + Cottier Architects. Nominated Architects: Michael Heenan 5284, Peter Ireland 6661