

Chullora Materials Recycling Facility

Environmental Impact Statement (SSD-10401)

Appendix M Historic Photographs

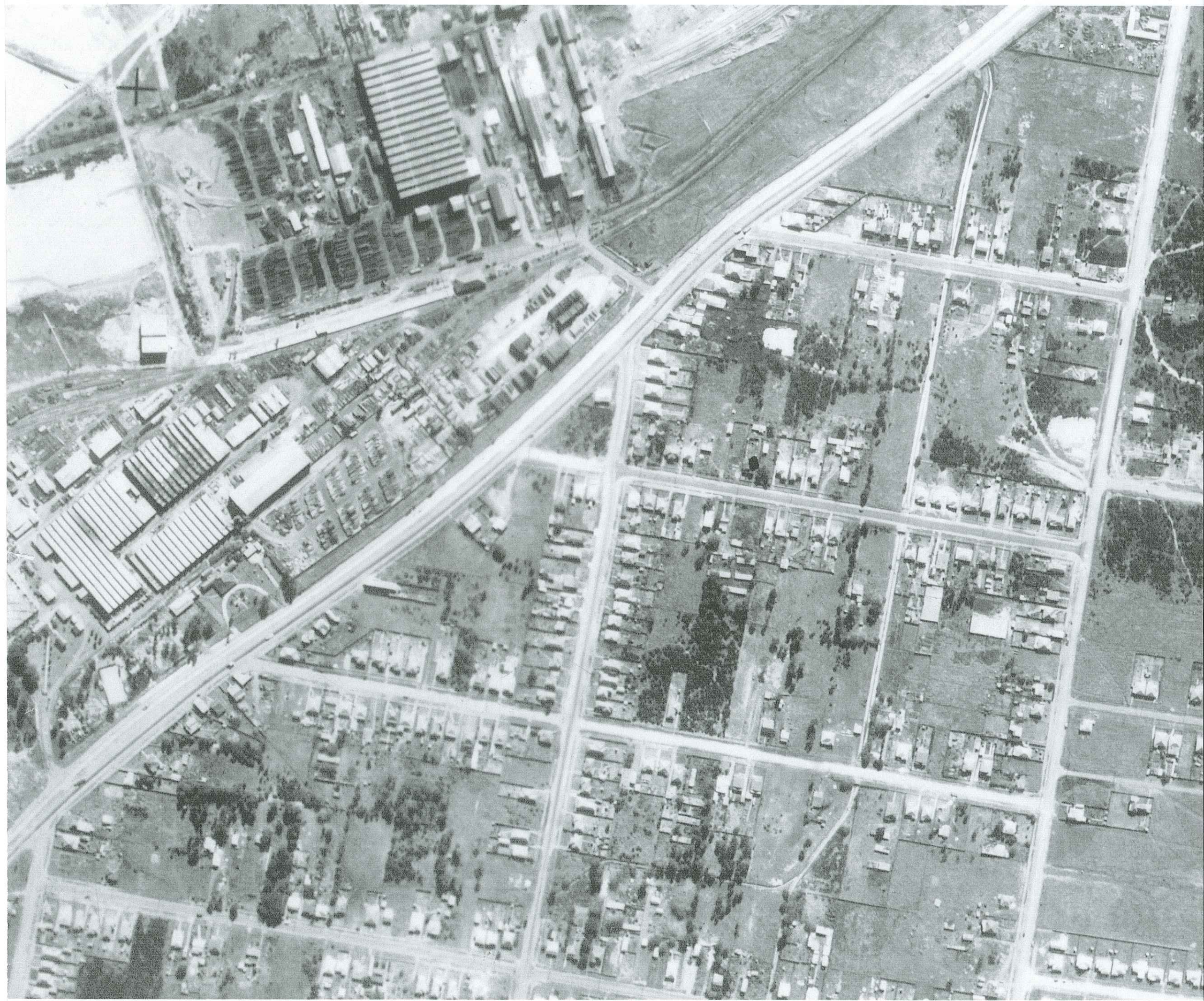


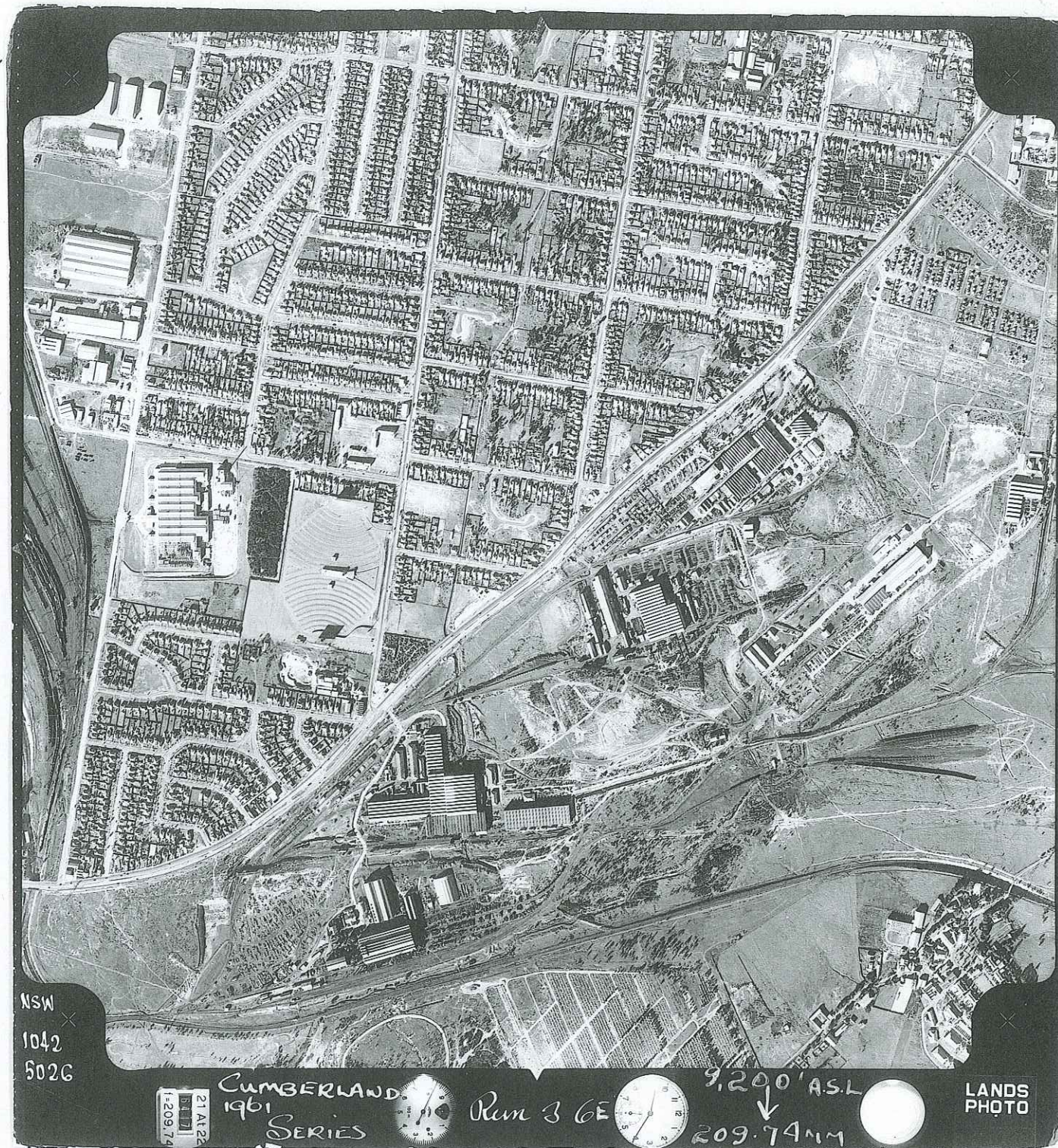


467 60

SYDNEY (Co.CUMBERLAND) RUN 14↑ MAY 51 12" 12200

LANDS PHOTO
CROWN COPYRIGHT RESERVED





NSW
1042
5026

21 A122
1-209.74

CUMBERLAND
1961
SERIES

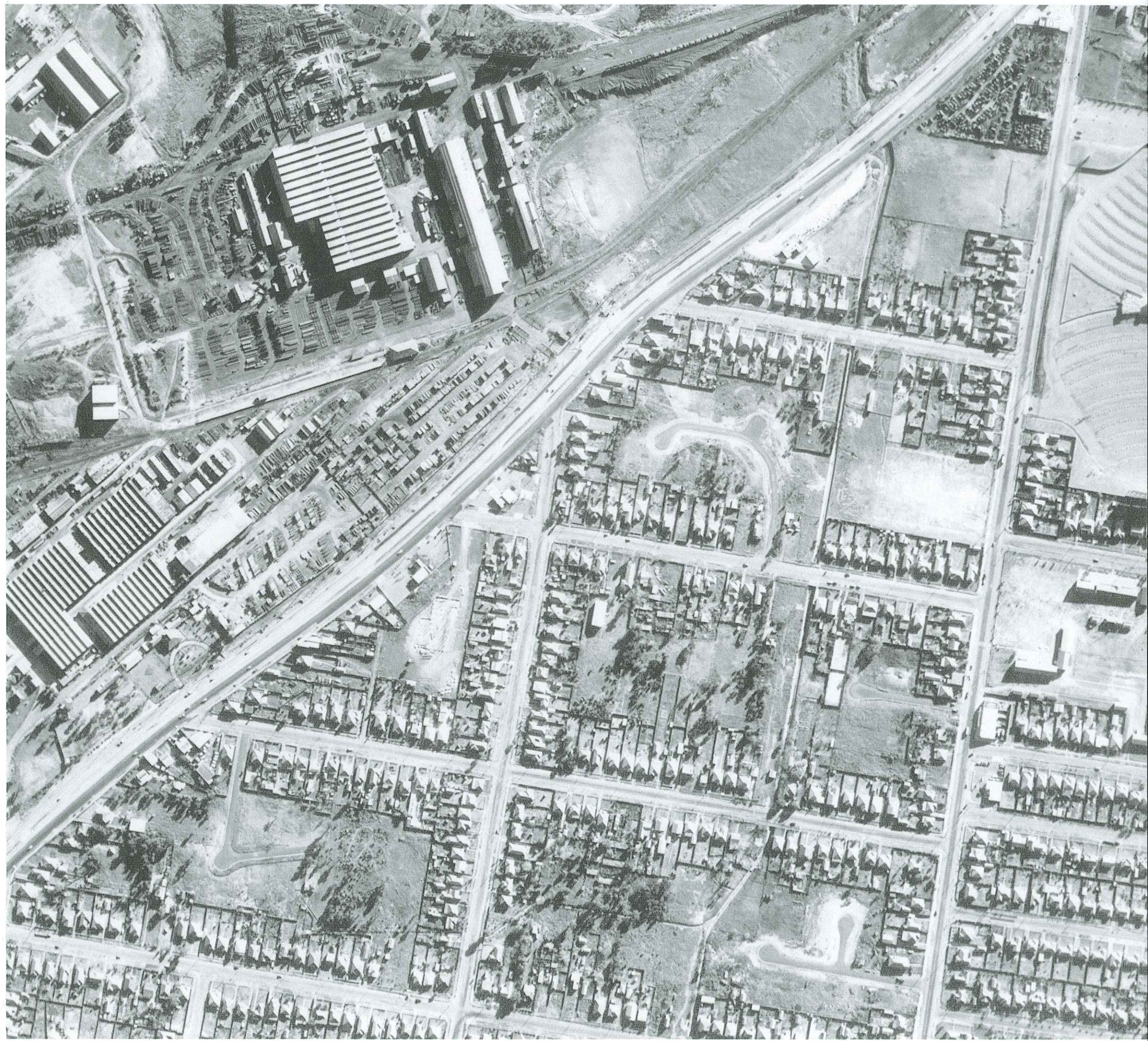


Run 3 6E



9,200' ASL
↓
209.74MM

LANDS
PHOTO





UAg 1001 152.37

F 0 6 7

NSW
1909
5092

CUMBERLAND
1970 SERIES

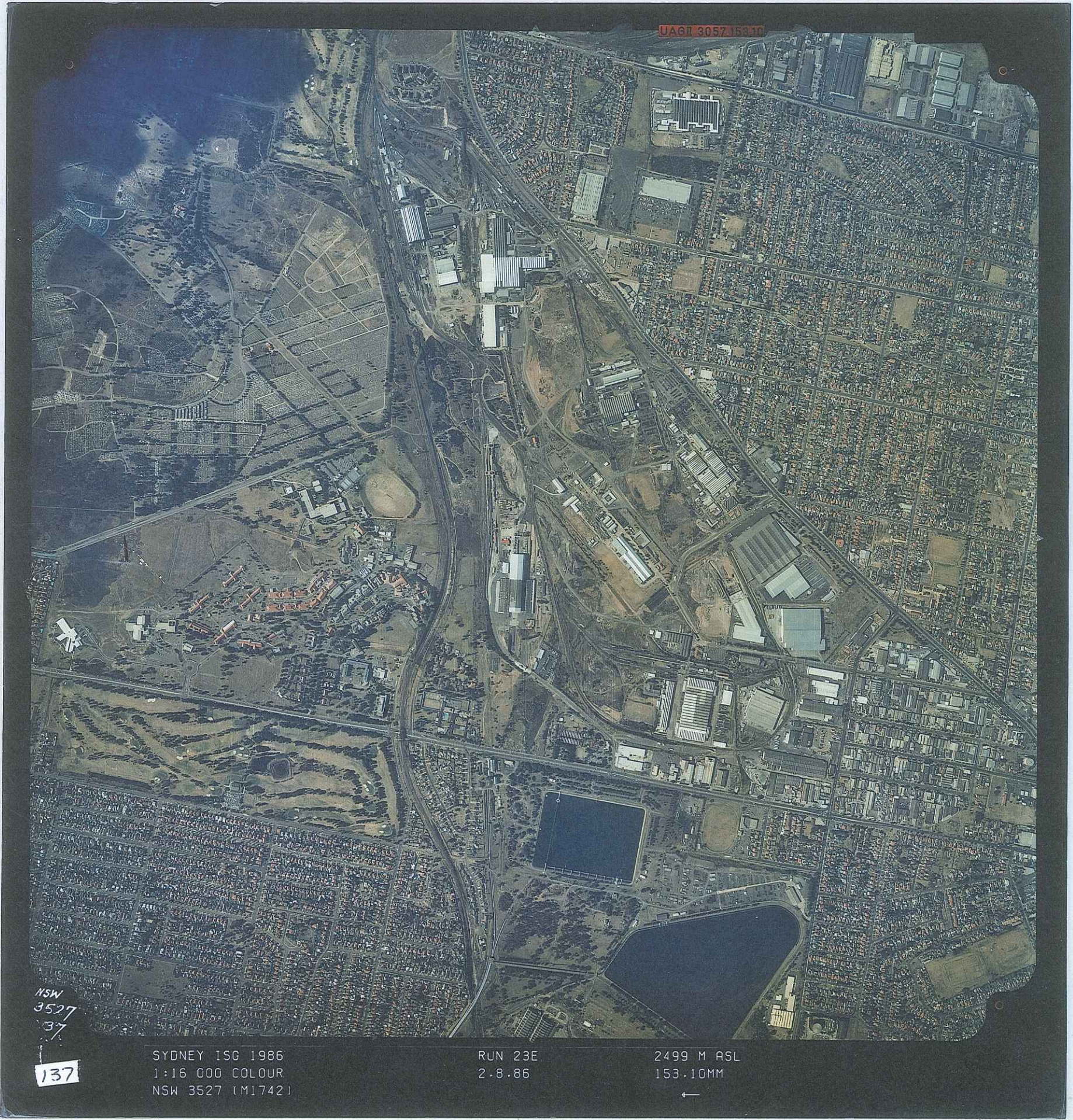
RUN 18
7.7.70

7.500A-S-L
152.37M-M

NSW 1909

CROWN
COPY N.S.W.
LANDS PHOTO
LOG-E
IST COPY





UAGT 3057 15300

NSW
3527
37

137

SYDNEY ISG 1986
1:16 000 COLOUR
NSW 3527 (M1742)

RUN 23E
2-8-86

2499 M ASL
153.10MM
←





SYDNEY
1:25000 Approx. Scale
NSW4244 (Colour)

RUN 11
04-10-94
153-164

4054M ASL
152.76mm



Department of Land
211 Kent Street

