

northstar

AIR QUALITY



This document has been prepared on behalf of **ISPT Pty Ltd** by:

Northstar Air Quality Pty Ltd,

Suite 1504, 275 Alfred Street, North Sydney, NSW 2060

www.northstarairquality.com | Tel: +61 (02) 9071 8600

Elevation @ Greystanes

Prospect Logistics Estate - Air Quality Impact Assessment

Addressee(s): ISPT Pty Ltd

Report Reference: 20.1071 FR1V1

Date: 27 May 2020

Quality Control

Study	Status	Prepared	Checked	Authorised
INTRODUCTION	Final	Northstar	GCG	MD
THE PROPOSAL	Final	Northstar	GCG	MD
LEGISLATION, REGULATION AND GUIDANCE	Final	Northstar	GCG	MD
EXISTING CONDITIONS	Final	Northstar	GCG	MD
METHODOLOGY	Final	Northstar	GCG	MD
CONSTRUCTION AIR QUALITY IMPACT ASSESSMENT	Final	Northstar	GCG	MD
OPERATIONAL AIR QUALITY IMPACT ASSESSMENT	Final	Northstar	GCG	MD
MITIGATION AND MONITORING	Final	Northstar	GCG	MD
CONCLUSION	Final	Northstar	GCG	MD

Report Status

Northstar References		Report Status	Report Reference	Version
Year	Job Number	(Draft: Final)	(Rx)	(Vx)
20	1071	F	R1	V1
Based upon the above, the specific reference for this version of the report is:				20.1071.FR1V1

Final Authority

This report must be regarded as draft until the above study components have been each marked as final, and the document has been signed and dated below.



Martin Doyle

27th May 2020

© Northstar Air Quality Pty Ltd 2020

Copyright in the drawings, information and data recorded in this document (the information) is the property of Northstar Air Quality Pty Ltd. This report has been prepared with the due care and attention of a suitably qualified consultant. Information is obtained from sources believed to be reliable, but is in no way guaranteed. No guarantee of any kind is implied or possible where predictions of future conditions are attempted. This report (including any enclosures and attachments) has been prepared for the exclusive use and benefit of the addressee(s) and solely for the purpose for which it is provided. Unless we provide express prior written consent, no part of this report should be reproduced, distributed or communicated to any third party. We do not accept any liability if this report is used for an alternative purpose from which it is intended, nor to any third party in respect of this report.

Non-Technical Summary

Northstar Air Quality was engaged by ISPT Pty Ltd, to perform an Air Quality Impact Assessment, to support an EIS for the construction and operation of warehouse/industrial development, to be located along Clunies Ross Street, Greystanes, within the Western Sydney Employment Lands area.

This Air Quality Impact Assessment has been performed to support a State Significant Development Application for the site, which is located within an area covered by NSW State Environmental Planning Policy (Western Sydney Employment Area) 2009.

It is anticipated that construction phase activities will involve demolition works and earth works, construction works and associated vehicle traffic. The associated risks of impacts from demolition, construction, track-out and construction traffic, have all been assessed using the published guidelines contained in *IAQM Guidance on the Assessment of Dust from Demolition and Construction*, developed in the United Kingdom by the Institute of Air Quality Management (IAQM). These have been specifically adapted by Northstar Air Quality for use in Australia. This methodology has been used in a similar context on other numerous, comparable AQIA studies. That assessment contained in this report shows that, through the application of appropriate dust management techniques, there is a low risk of health or nuisance impacts as a result of developing the above facilities during construction works.

The prediction of potential impacts associated with operational activities, has been performed in general accordance with the requirements of the NSW Approved Methods (NSW EPA 2017). The predictions have been arrived at using an approved and appropriate dispersion modelling technique. The estimation of emissions for the development has been performed using referenced emission factors.

It is demonstrated that the operation of the Proposal does not cause any exceedances of the relevant NSW air quality criteria, even with the addition of background air pollutant concentrations representative of the area.

Contents

1.	INTRODUCTION	9
1.1.	Secretary's Environmental Assessment Requirements	9
1.2.	Purpose of the Report	10
1.3.	Scope of Assessment	10
2.	THE PROPOSAL	11
2.1.	Environmental Setting	11
2.2.	Overview and Purpose	12
2.3.	Identification of Potential Emissions to Atmosphere	12
2.3.1.	Construction Phase	13
2.3.2.	Operational Phase	13
3.	LEGISLATION, REGULATION AND GUIDANCE	15
3.1.	Ambient Air Quality Standards	15
3.2.	NSW Government Air Quality Planning	16
3.3.	State Environmental Planning Policy (Western Sydney Employment Area) 2009	16
4.	EXISTING CONDITIONS	19
4.1.	Surrounding Land Sensitivity	19
4.1.1.	Land Use Zoning	19
4.1.2.	Discrete Receptor Locations	21
4.1.3.	Uniform Receptor Locations	23
4.2.	Topography	23
4.3.	Meteorology	25
4.4.	Air Quality	27
5.	METHODOLOGY	30
5.1.	Construction Phase	30
5.2.	Operational Phase	31
5.2.1.	Dispersion Modelling	31
5.2.2.	Emissions Estimation	32
6.	CONSTRUCTION AIR QUALITY IMPACT ASSESSMENT	38

6.1.	Screening Based on Separation Distance	38
6.2.	Impact Magnitude	39
6.3.	Sensitivity of an Area	40
6.3.1.	Land Use Value	40
6.3.2.	Sensitivity of an Area.....	40
6.4.	Risk (Pre-Mitigation).....	41
6.5.	Identified Mitigation.....	41
6.6.	Risk (Post-Mitigation).....	45
7.	OPERATIONAL AIR QUALITY IMPACT ASSESSMENT	46
7.1.	Particulate Matter	46
7.1.1.	Annual Average TSP, PM ₁₀ and PM _{2.5}	46
7.1.2.	Annual Average Dust Deposition Rates.....	47
7.1.3.	Maximum 24-Hour PM ₁₀ and PM _{2.5}	48
7.2.	Nitrogen Dioxide	51
8.	MITIGATION AND MONITORING.....	55
8.1.	Construction Phase Mitigation.....	55
8.2.	Operational Phase Mitigation.....	55
8.3.	Monitoring	56
9.	CONCLUSION.....	57
10.	REFERENCES.....	59
Appendix A	61
Appendix B	72
Appendix C	78

Tables

Table 1	Secretary's Environmental Assessment Requirements (SSD 10399)	9
Table 2	Identified potential sources of air emissions	14
Table 3	NSW EPA air quality standards and goals	15
Table 4	Receptor locations used in the study	22
Table 5	Details of meteorological monitoring surrounding the Proposal site	25
Table 6	Closest DPIE AQMS to the Proposal site	27
Table 7	Summary of background air quality used in the AQIA	28
Table 8	Emission factors, particulate matter – vehicle transport	33
Table 9	Emission factors – gaseous and particulate matter emissions, diesel engines	34
Table 10	Emission estimation, particulate matter - vehicle transport	35
Table 11	Emission estimation – gaseous and particulate matter emissions, diesel engines	36
Table 12	Construction phase impact screening criteria distances	39
Table 13	Application of Step 1 Screening	39
Table 14	Construction phase impact categorisation of dust emission magnitude	40
Table 15	Risk of air quality impacts from construction activities	41
Table 16	Site-specific management measures	42
Table 17	Predicted annual average TSP, PM ₁₀ and PM _{2.5} concentrations	47
Table 18	Predicted annual average dust deposition	48
Table 19	Predicted maximum incremental 24-hour PM ₁₀ and PM _{2.5} concentrations	48
Table 20	Summary of contemporaneous impact and background – PM ₁₀	49
Table 21	Summary of contemporaneous impact and background – PM _{2.5}	50
Table 22	Predicted 1 hour and annual average nitrogen dioxide concentrations	52

Figures

Figure 1	Proposal site location	11
Figure 2	Proposal site layout	12
Figure 3	Western Sydney Employment Area – Land application map	17
Figure 4	Current land use zoning	19
Figure 5	Population density and sensitive receptors surrounding the Proposal site	22
Figure 6	Three-dimensional representation of topography surrounding the Proposal site	24
Figure 7	Meteorological monitoring stations surrounding the Proposal site	26
Figure 8	Construction phase impact risk assessment methodology	31
Figure 9	Predicted maximum incremental 24-hour PM ₁₀ impacts	51
Figure 10	Predicted maximum incremental 1-hour NO ₂ impacts	53

Units Used in the Report

All units presented in the report follow International System of Units (SI) conventions, unless derived from references using non-SI units. In this report, units formed by the division of SI and non-SI units are expressed as a negative exponent, and do not use the solidus (/) symbol. *For example*, 50 micrograms per cubic metre would be expressed as 50 µg·m⁻³ and not 50 µg/m³.

Common Abbreviations

Abbreviation	Term
ABS	Australian Bureau of Statistics
AHD	Australian height datum
AQIA	air quality impact assessment
AQMS	air quality monitoring station
BoM	Bureau of Meteorology
CO	carbon monoxide
CSIRO	Commonwealth Scientific and Industrial Research Organisation
DEC	Department of Environment and Conservation
DPI&E	Department of Planning, Industry and Environment
EETM	emission estimation technique manual
EPA	Environmental Protection Authority
m ⁻²	per square metre
m ⁻³	per cubic metre
mg·m ⁻³	milligram per cubic metre of air
mg·Nm ⁻³	milligram per normalised cubic metre of air

Abbreviation	Term
$\mu\text{g}\cdot\text{m}^{-3}$	microgram per cubic metre of air
mE	metres East
month ⁻¹	per month
mS	metres South
NCAA	National Clean Air Agreement
NEPM	National Environment Protection Measure
NO	nitric oxide
NO _x	oxides of nitrogen
NO ₂	nitrogen dioxide
O ₃	ozone
PM	particulate matter
PM ₁₀	particulate matter with an aerodynamic diameter of 10 μm or less
PM _{2.5}	particulate matter with an aerodynamic diameter of 2.5 μm or less
SEARs	Secretary's Environmental Assessment Requirements
SEPP	State Environmental Planning Policy
SSD	State Significant Development
TAPM	The Air Pollution Model
TSP	total suspended particulates
US EPA	United States Environmental Protection Agency
UTM	Universal Transverse Mercator
VKT	vehicle kilometres travelled
WSEA	Western Sydney Employment Area

1. INTRODUCTION

ISPT Pty Ltd (the Applicant) has engaged Northstar Air Quality Pty Ltd (Northstar) to perform an Air Quality Impact Assessment (AQIA) for the construction and operation of seven warehouses, associated offices and hardstand/car parking areas (the Proposal).

The Proposal will be situated within Lot 10 in Deposited Plan (DP) 1022044, Lot 107 in DP 1028208, Lot 63 in DP 752051, Lot 216 in DP 1030744, and Lot 601 in DP 1047403 along Clunies Ross Street in the suburbs of Pemulwuy and Prospect (the Proposal site). The Proposal site is located within the 90 hectare (ha) Greystanes North Employment Lands (NEL) in the Western Sydney Employment Area (WSEA).

This AQIA presents an assessment of the risks to local air quality associated with the construction and operation of the Proposal. This AQIA supports the Environmental Impact Statement (EIS) for the Proposal and presents a range of recommended mitigation measures to minimise any identified air quality impacts, where required and relevant.

The *Environmental Planning and Assessment Act* 1979 (EP&A Act) forms the statutory framework for planning approval and environmental assessment in NSW. The Development qualifies as State Significant Development (SSD) under *State Environmental Planning Policy (State and Regional Development) 2011*, due to its location with the land contained within *State Environmental Planning Policy (Western Sydney Employment Area) 2009*.

1.1. Secretary's Environmental Assessment Requirements

NSW Department of Planning, Industry and Environment (DPIE), issued the Planning Secretary's Environmental Assessment Requirements (SEARs) for the Proposal in December 2019. **Table 1** below identifies the SEARs relevant to this AQIA report and the relevant sections of the report in which they have been addressed.

Table 1 Secretary's Environmental Assessment Requirements (SSD 10399)

Issue	Requirement	Addressed
Air Quality	<p>Including:</p> <ul style="list-style-type: none"> an assessment of the air quality impacts at private properties during construction and operation of the development, in accordance with the relevant Environment Protection Authority guidelines; and details of any mitigation, management and monitoring measures required to prevent and/ or minimise emissions. 	<p>Section 6 and Section 7</p> <p>Section 8</p>

NSW Environment Protection Authority (EPA), Blacktown City Council and Cumberland Council have provided input to the SEARs. Blacktown City Council has requested the submission of an air quality report, whilst NSW EPA and Cumberland Council did not make any comments relating to air quality issues.

1.2. Purpose of the Report

The purpose of this report is to examine and identify whether the impacts of the construction and operation of the Proposal may adversely affect local air quality.

To allow assessment of the level of risk associated with the Proposal in relation to air quality, the AQIA has been performed in accordance with and with due reference to:

- Approved Methods for the Modelling and Assessment of Air Pollutants in NSW (NSW EPA, 2016);
- Approved Methods for the Sampling and Analysis of Air Pollutants in NSW (DEC, 2007);
- Technical Framework and Notes - Assessment and Management of Odour from Stationary Sources in NSW (NSW DEC, 2006);
- *Protection of the Environment Operations Act* 1997;
- Protection of the Environment Operations (Clean Air) Regulation 2010; and
- State Environmental Planning Policy (Western Sydney Employment Area) 2009.

1.3. Scope of Assessment

This report presents data that summarises and characterises the existing environmental conditions and identifies the potential emissions to air associated with the construction and operational phases of the Proposal. It examines the potential for off-site impacts and identifies appropriate mitigation measures that would be required to reduce those potential impacts.

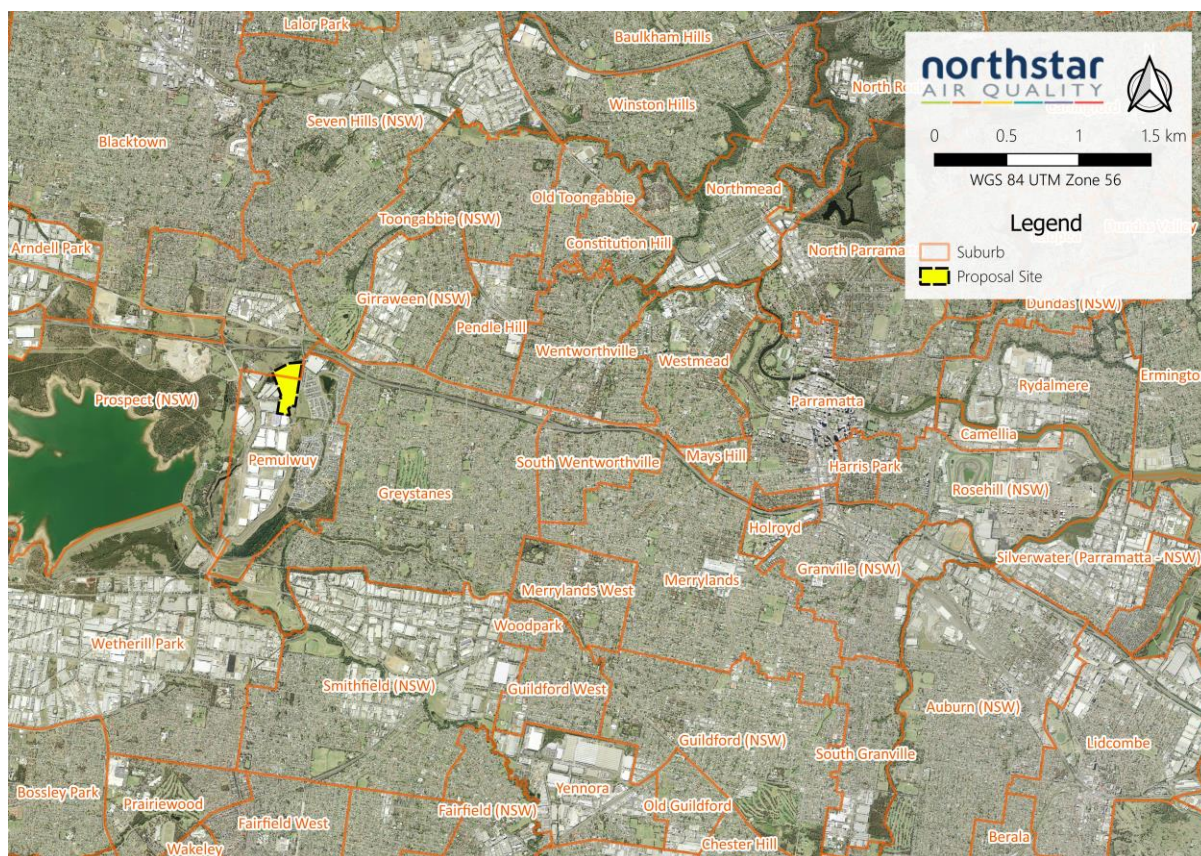
2. THE PROPOSAL

The following provides a description of the context, location, and scale of the Proposal, a description of the processes and development activities on site. It also identifies the potential for emissions to air associated with the Proposal.

2.1. Environmental Setting

The Proposal site is located on multiple parcels of land at Clunies Ross Street, over two suburbs, Prospect in the Blacktown Local Government Area (LGA) and Pemulwuy in the Cumberland LGA. The Proposal site is approximately 7 kilometres (km) west of the Parramatta CBD and approximately 26 km west of the Sydney CBD. A map showing the location of the Proposal site is provided in **Figure 1** below.

Figure 1 Proposal site location



Source: Northstar Air Quality

The closest residential property is approximately 25 metres (m) from the Proposal site boundary to the east, on Muttong Street, Pemulwuy (see **Section 4.1.2** of this Report).

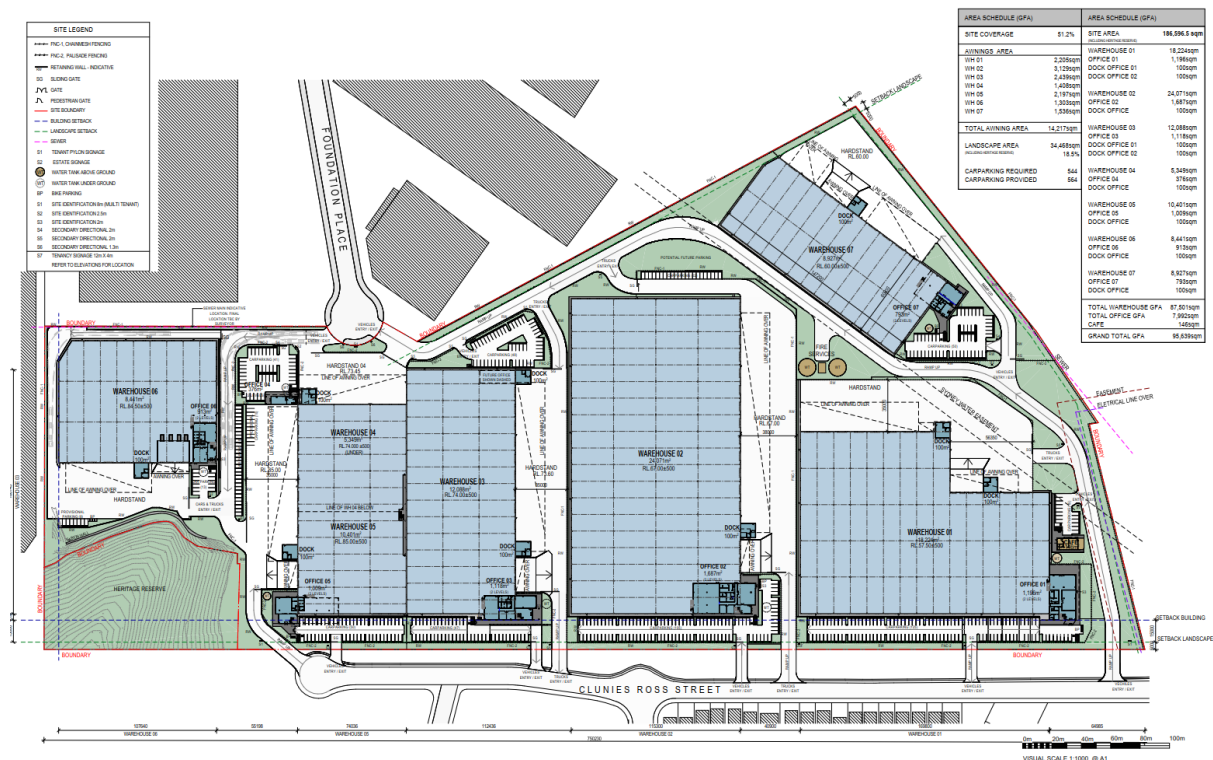
A full description of the sensitivity of the surrounding land, and the identification of discrete receptor locations used in the AQIA, is provided in full in **Section 4.1**.

2.2. Overview and Purpose

The Proposal seeks to gain approval to develop the Proposal site to build and operate seven warehousing buildings, associated offices, and hardstand/car parking areas. While the final intended use of all warehouses is yet to be confirmed, the Applicant intends to develop two warehouses for cold storage of food, beverage and therapeutic goods. Other warehouses will lend themselves to a range of other users such as food and beverage, third part logistics, general warehousing and distribution centres, pharmaceutical groups, automotive industries, e-commerce groups, corporate occupiers with integrated supply chain operations and hardware/trade counter distribution occupiers.

A layout of the Proposal site is provided in **Figure 2**.

Figure 2 Proposal site layout



Source: Alrio

Note: The layout presented above differs marginally from that subject to assessment. The total GFA of the warehouses at the Proposal site is smaller than that subject to modelling, and the results presented within this report therefore provide a marginally conservative assessment.

2.3. Identification of Potential Emissions to Atmosphere

Given the nature of the Proposal described above, emissions to air would be likely to be generated as described below.

2.3.1. Construction Phase

Construction of the Proposal would involve demolition of existing structures, bulk earthworks (cut and fill), building and construction of new roads, pavements, services and hardstand, and construction of buildings, fit-out and commissioning.

An indicative list of plant and equipment that may be used during the construction of the Proposal includes:

- Excavators;
- Front End Loaders;
- Graders;
- Light vehicles;
- Heavy vehicles;
- Drills;
- Pneumatic hand or power tools;
- Cranes;
- Commercial vans; and
- Cherry pickers.

The assessment of the potential impacts upon local air quality, resulting from construction activities, is presented in **Section 6**.

2.3.2. Operational Phase

During the operation of the Proposal, the following activities are anticipated to result in potential emissions to air:

- Movement of vehicles around the internal roadways of the Proposal site on paved road surfaces;
- Diesel combustion emissions from the consumption of diesel fuel, in the truck movements importing and exporting materials. The potential emissions would include particulate matter (as PM₁₀ and PM_{2.5}) and oxides of nitrogen (NO_x), including nitrogen dioxide (NO₂). There would additionally be some less significant emissions of carbon monoxide (CO), sulphur dioxide (SO₂) and air toxics (including benzene and 1,3-butadiene) but for the purposes of this assessment, it is comfortably assumed that the principal gaseous pollutant would be NO_x.

Experience in performing assessments of the impact of combustion-related emissions from the use of vehicles indicates that the principal indicator pollutants are particulate matter (PM₁₀ and PM_{2.5}) and NO₂ associated with relevant short-term criteria. NO_x/NO₂ concentrations have been used within this assessment as an indicator pollutant for all other combustion-related gaseous emissions resulting from traffic.

A summary of the emission sources and potential emissions to air during the construction and operation of the Proposal, is presented in **Table 2**.

Table 2 Identified potential sources of air emissions

Source	Particulate Emissions			Gaseous Emissions
	TSP	PM ₁₀	PM _{2.5}	NO _x
Construction Phase				
Construction activities	✓	✓	✓	
Operational Phase				
Wheel generated emissions – trucks	✓	✓	✓	
Exhaust emissions – truck engine	✓	✓ ⁽¹⁾	✓	✓

Note (1) Particulate emissions from diesel combustion are predominantly less than 1 micrometre (1 µm) in diameter and are therefore assessed as PM_{2.5}. As PM_{2.5} is essentially a subset of PM₁₀, PM₁₀ has been assessed at an equivalent rate to PM_{2.5} for the relevant sources.

Given the nature of the development at this site, it is not anticipated that odour would be emitted in any significant quantity during construction. Given the site history (miscellaneous industrial uses including a brickworks), there is a potential for release of ground contamination during the construction phase. A detailed site investigation (Phase 2) is submitted with this application demonstrating how any potential contamination would be managed to ensure that no odour would impact upon surrounding residences.

The operation of the Proposal site is considered not likely to be significantly odorous. In light of the above, odour has not been considered further as part of this AQIA.

3. LEGISLATION, REGULATION AND GUIDANCE

State air quality guidelines adopted by the NSW EPA, are published in the *'Approved Methods for the Modelling and Assessment of Air Pollutants in NSW'* (the Approved Methods (NSW EPA, 2016)), which has been consulted during the preparation of this AQIA.

3.1. Ambient Air Quality Standards

The Approved Methods lists the statutory methods that are to be used to model and assess emissions of criteria air pollutants from stationary sources in NSW. Section 7.1 of the Approved Methods clearly outlines the impact assessment criteria for the Proposal. The criteria listed in the Approved Methods are derived from a range of sources (including National Health and Medical Research Council (NHMRC), National Environment Protection Council (NEPC), Department of Environment (DoE), World Health Organisation (WHO), and Australian and New Zealand Environment and Conservation Council (ANZECC)). Where relevant to this AQIA (coincident with the potential emissions identified in **Section 2.3** and **Table 2**), the criteria have been adopted as set out in Section 7.1 of NSW EPA (2017) which are presented in **Table 3** below.

Table 3 NSW EPA air quality standards and goals

Pollutant	Averaging period	Units	Criterion	Notes
Nitrogen dioxide (NO ₂)	1 hour	µg·m ⁻³	246	Numerically equivalent to the AAQ NEPM ^(b) standards and goals.
	Annual	µg·m ⁻³	62	
Particulates (as PM ₁₀)	24 hours	µg·m ⁻³	50	
	1 year	µg·m ⁻³	25	
Particulates (as PM _{2.5})	24 hours	µg·m ⁻³	25	
	1 year	µg·m ⁻³	8	
Particulates (as TSP)	1 year	µg·m ⁻³	90	
Particulates (as dust deposition)	1-year ^(c)	g·m ⁻² ·month ⁻¹	2	Assessed as insoluble solids as defined by AS 3580.10.1
	1-year ^(d)	g·m ⁻² ·month ⁻¹	4	

Notes: (a): micrograms per cubic metre of air
 (b): National Environment Protection (Ambient Air Quality) Measure
 (c): Maximum increase in deposited dust level
 (d): Maximum total deposited dust level

3.2. NSW Government Air Quality Planning

NSW EPA has formed a comprehensive strategy with the objective of driving improvements in air quality across the State. This comprises several drivers, including:

- Legislation: formed principally through the implementation of the *Protection of the Environment Operations Act 1997*, and the Protection of the Environment Operations (Clean Air) Regulations 2010. The overall objective of this legislative instruments is to achieve the requirements of the National Environment Protection (Ambient Air Quality) Measure;
- Clean Air for NSW: The 10-year plan for the improvement in air quality;
- Inter-agency Taskforce on Air Quality in NSW: a vehicle to co-ordinate cross-government incentives and action on air quality;
- Managing particles and improving air quality in NSW; and
- Diesel and marine emission management strategy.

In regard to the relevance of the NSW Government's drive to improve air quality across the State and this AQIA, it is imperative that this Proposal demonstrates leadership in the development of the NSW economy (in terms of activity and employment) and concomitantly not cause a detriment in achieving its objectives.

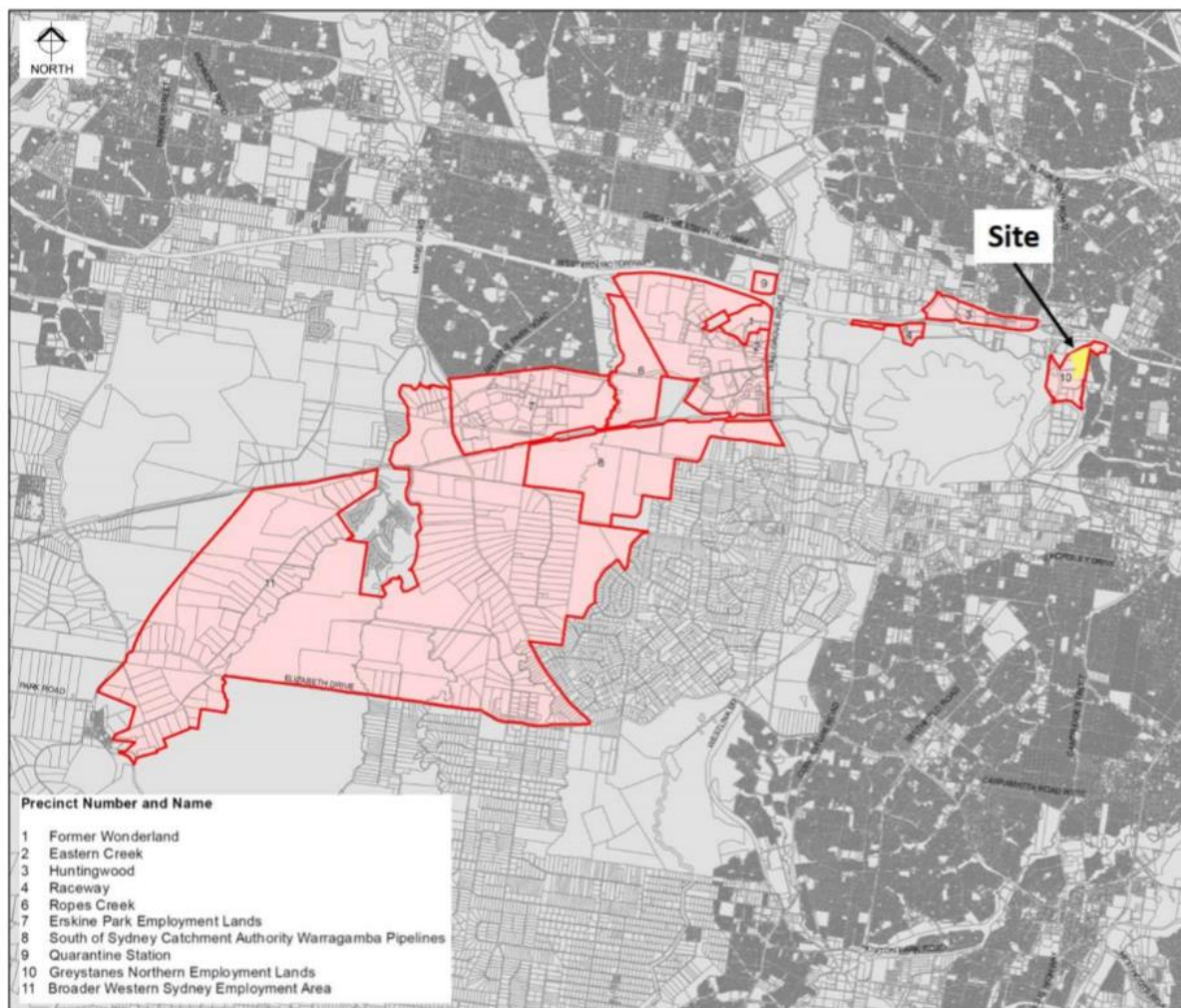
3.3. State Environmental Planning Policy (Western Sydney Employment Area) 2009

State Environmental Planning Policy (Western Sydney Employment Area) 2009 (the WSEA SEPP) aims to protect and enhance the Western Sydney Employment Area for employment purposes. The WSEA SEPP aims to:

- promote economic development and the creation of employment in the Western Sydney Employment Area, by providing for development including major warehousing, distribution, freight transport, industrial, high technology and research facilities;
- provide for the co-ordinated planning and development of land in the Western Sydney Employment Area;
- rezone land for employment or environmental conservation purposes;
- improve certainty and regulatory efficiency by providing a consistent planning regime for future development and infrastructure provision in the Western Sydney Employment Area;
- ensure that development occurs in a logical, environmentally-sensitive and cost-effective manner and only after a Development Control Plan (including specific development controls), has been prepared for the land concerned;
- conserve and rehabilitate areas that have a high biodiversity or heritage or cultural value, in particular areas of remnant vegetation.

The Western Sydney Employment Area identifies eleven precincts within its boundary, as shown in **Figure 3**. The site is located within Precinct 10 - Greystanes Northern Employment Lands., indicating that the entirety of the site is located within the area covered by the WSEA SEPP and therefore the requirements and aims of the WSEA SEPP apply to the Proposal site.

Figure 3 Western Sydney Employment Area – Land application map



Source: Based on New South Wales Government (<https://legislation.nsw.gov.au/#/view/EPL/2009/413/maps>)
 SEPP_WSEA_LAP_001_080_20160204

Page left intentionally blank

4. EXISTING CONDITIONS

4.1. Surrounding Land Sensitivity

4.1.1. Land Use Zoning

The land use surrounding the Proposal site is zoned within the Blacktown LGA and Cumberland City Council (formerly Holroyd) LGA Local Environment Plans (LEP). The Blacktown LEP (2015) regulates development throughout the Blacktown LGA and the Holroyd Local Environmental Plan 2013 regulates development throughout the Cumberland LGA. The current land use zoning is illustrated in **Figure 4** below.

Figure 4 Current land use zoning

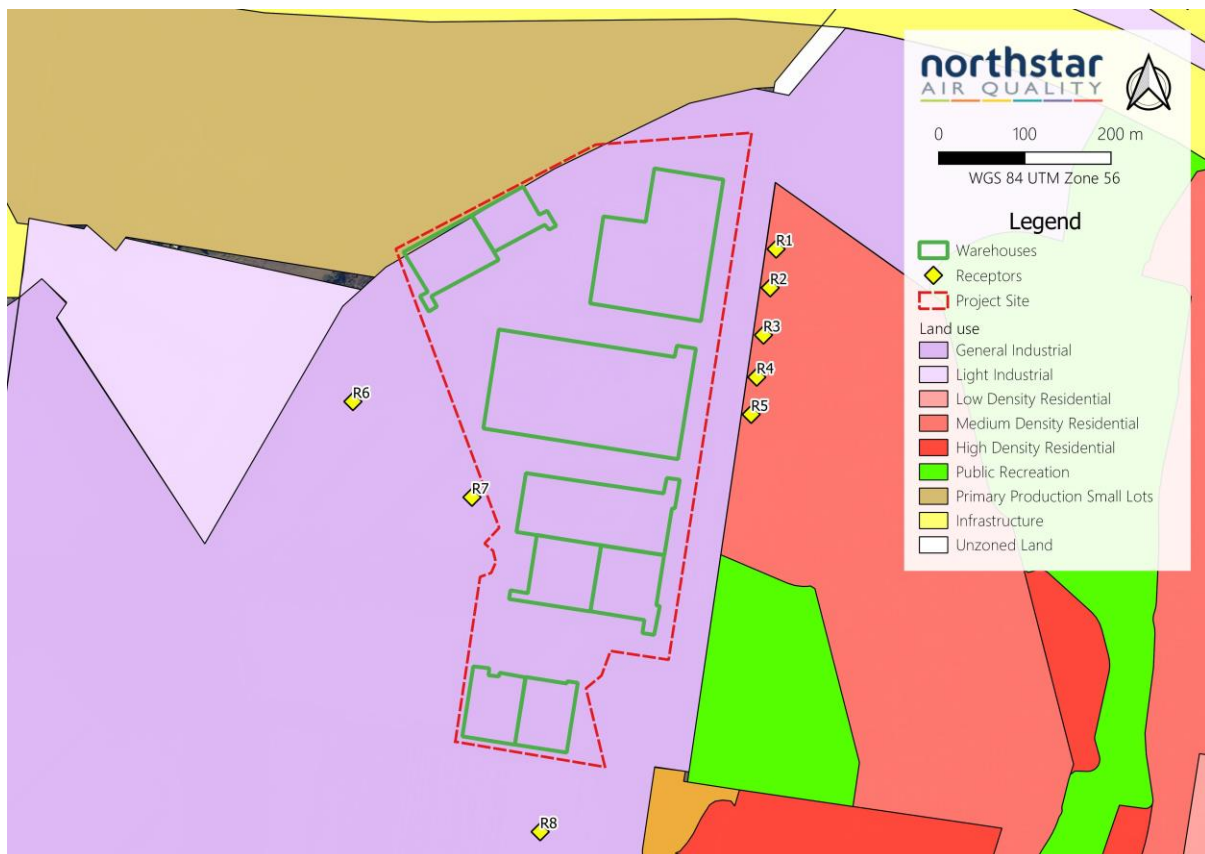


Image courtesy of NSW Department of Planning and Environment, adapted by Northstar Air Quality

Note: The layout presented above differs marginally from that presented in **Figure 2**. The total GFA of the warehouses at the Proposal site is smaller than that subject to modelling (as presented above), and the results presented within this report therefore provide a marginally conservative assessment.

The land on which the Proposal site is situated is currently zoned in the State Environmental Planning Policy (Western Sydney Employment Area) 2009 as IN1 (General Industrial). Lands to the immediate east are zoned under the Holroyd Local Environmental Plan (LEP) 2013 as IN1 (General industrial), R3 (Medium Density Residential) or RE1 (Public Recreation). Land to the immediate north are zoned RU4 (Primary Production Small Lots) under the Blacktown LEP 2015. Lands to the immediate south and west are zoned IN1.

4.1.2. Discrete Receptor Locations

Air quality assessments typically use a desk-top mapping study to identify 'discrete receptor locations', which are intended to represent a selection of locations that may be susceptible to changes in air quality. In broad terms, the identification of sensitive receptors, refers to places at which humans may be present for a period representative of the averaging period for the pollutant being assessed. Typically, these locations are identified as residential properties, although other sensitive land uses may include schools, medical centres, places of employment, recreational areas or ecologically sensitive locations.

It is noted that the assessment criteria applied to particulates (see **Table 3**) is as a 24-hour averaging period, and as such the predicted impacts need to be interpreted at commercial and industrial receptor locations with care. It is considered to be atypical for a person to be at those locations for a complete 24-hour period and as such, the exposure risks at those locations would be over-estimated by adoption of those locations in the modelling assessment.

It is important to note that the selection of discrete receptor locations, is not intended to represent a fully inclusive selection of all sensitive receptors across the study area. The location selected should be considered to be representative of its broader location and may be reasonably assumed to be representative of the immediate environs. In some instances, several viable receptor locations may be identified in a small area, for example a school neighbouring a medical centre. In this instance the receptor closest to the potential sources to be modelled, would generally be selected and would be used to assess the risk to other sensitive land uses in the area.

It is further noted that in addition to the identified 'discrete' receptor locations, the entire modelling area is gridded with 'uniform' receptor locations (see **Section 4.1.3**) that are used to plot out the predicted impacts, and as such the accidental non-inclusion of a location that is sensitive to changes in air quality, does not render the AQIA invalid, or otherwise incapable of assessing those potential risks.

To ensure that the selection of discrete receptors for the AQIA are reflective of the locations in which the population of the area surrounding the Proposal site reside, population-density data has been examined. Population-density data based on the 2016 census, have been obtained from the Australian Bureau of Statistics (ABS) for a 1 square kilometre (km²) grid, covering mainland Australia (ABS, 2017). Using a Geographical Information System (GIS), the locations of sensitive receptor locations, have been confirmed with reference to their population densities.

For clarity, the ABS use the following categories to analyse population density (persons·km⁻²):

- | | | | |
|-------------|--------|-----------------|------|
| • Very high | >8,000 | • Low | >500 |
| • High | >5,000 | • Very low | <500 |
| • Medium | >2,000 | • No population | 0 |

Using ABS data in a GIS, the population density of the area surrounding the Proposal site are presented in **Figure 5**.

Figure 5 Population density and sensitive receptors surrounding the Proposal site

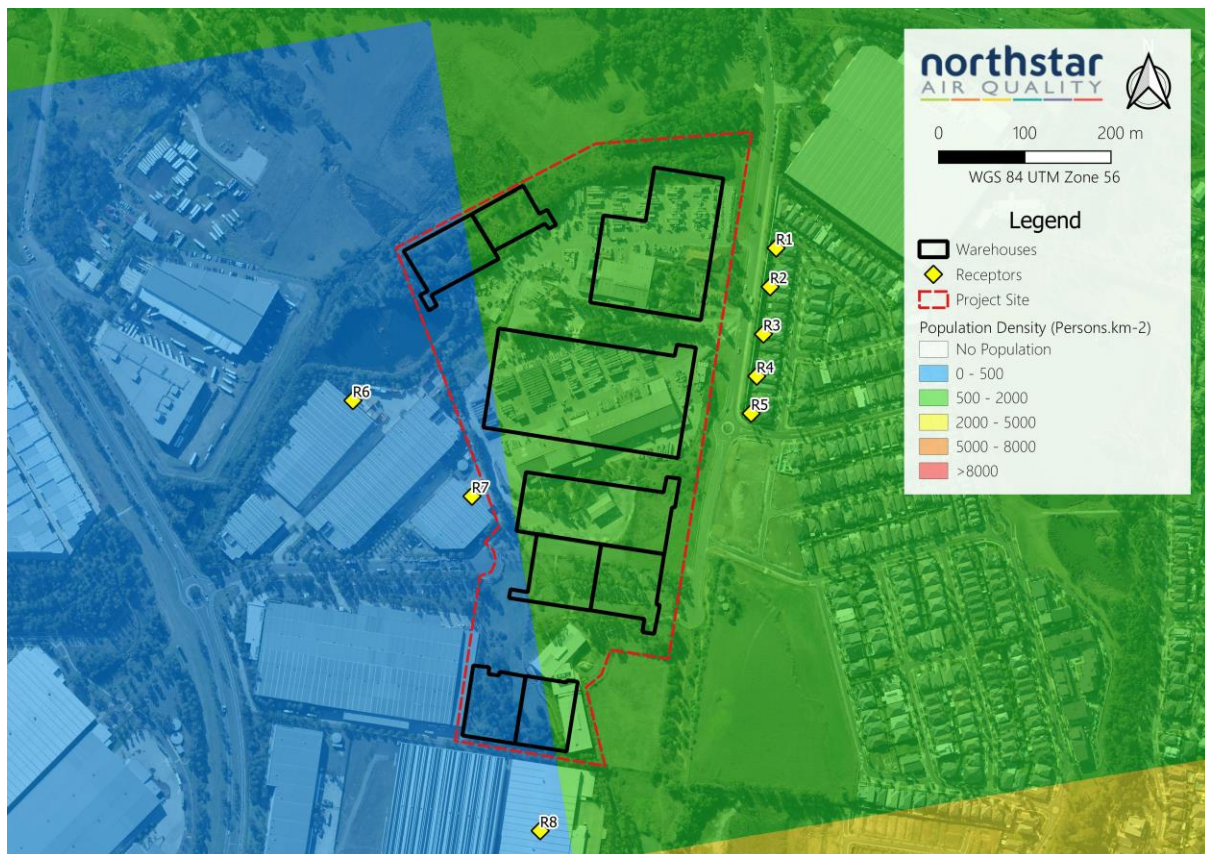


Image courtesy of Google Maps and data sourced from the ABS

Note: The layout presented above differs marginally from that presented in **Figure 2**. The total GFA of the warehouses at the Proposal site is smaller than that subject to modelling (as presented above), and the results presented within this report therefore provide a marginally conservative assessment.

The Proposal site and receptors are located in an area of 'very low' to 'low' population densities, which would be expected given the largely industrial activities of the immediate area.

In accordance with the requirements of the NSW EPA, several receptor have been identified and the receptors adopted for use within this AQIA are presented in **Table 4**. This selection is derived from the information presented in **Figure 4** and **Figure 5**.

Table 4 is not intended to represent a definitive list of sensitive land uses, but a cross section of available locations, that are used to characterise larger areas, or selected as they represent more sensitive locations, which may represent people who are more susceptible to changes in air pollution.

Table 4 Receptor locations used in the study

Rec	Location	Land use	Location (UTM)	
			mE	mS
R1	1 Muttong Street, Pemulwuy	Residential	308 210	6 257 062
R2	9 Muttong Street, Pemulwuy	Residential	308 203	6 257 015

Rec	Location	Land use	Location (UTM)	
			mE	mS
R3	19 Muttong Street, Pemulwuy	Residential	308 197	6 256 961
R4	27 Muttong Street, Pemulwuy	Residential	308 187	6 256 909
R5	35 Muttong Street, Pemulwuy	Residential	308 180	6 256 864
R6	1 Foundation Place, Pemulwuy	Industrial	307 698	6 256 877
R7	Foundation Place, Pemulwuy	Industrial	307 840	6 256 772
R8	2 Foundation Place, Pemulwuy	Industrial	307 926	6 256 377

Note: The requirements of this AQIA may vary from the specific requirements of other studies, and as such the selection and naming of receptor locations, may vary between technical reports. This does not affect or reduce the validity of those assumptions.

The site is bounded by existing warehouse and distribution facilities and light industrial development to the west, south and northeast, with the residential development of Pemulwuy to the east. To the north of the site is vacant land which is subject to a Gateway Determination (PP_2018_BLACK_008_00 issued 22 November 2018) to rezone the land under the Blacktown LEP 2015, to establish industrial land in the western portion and maintain the current function of the eastern portion as a stormwater detention basin.

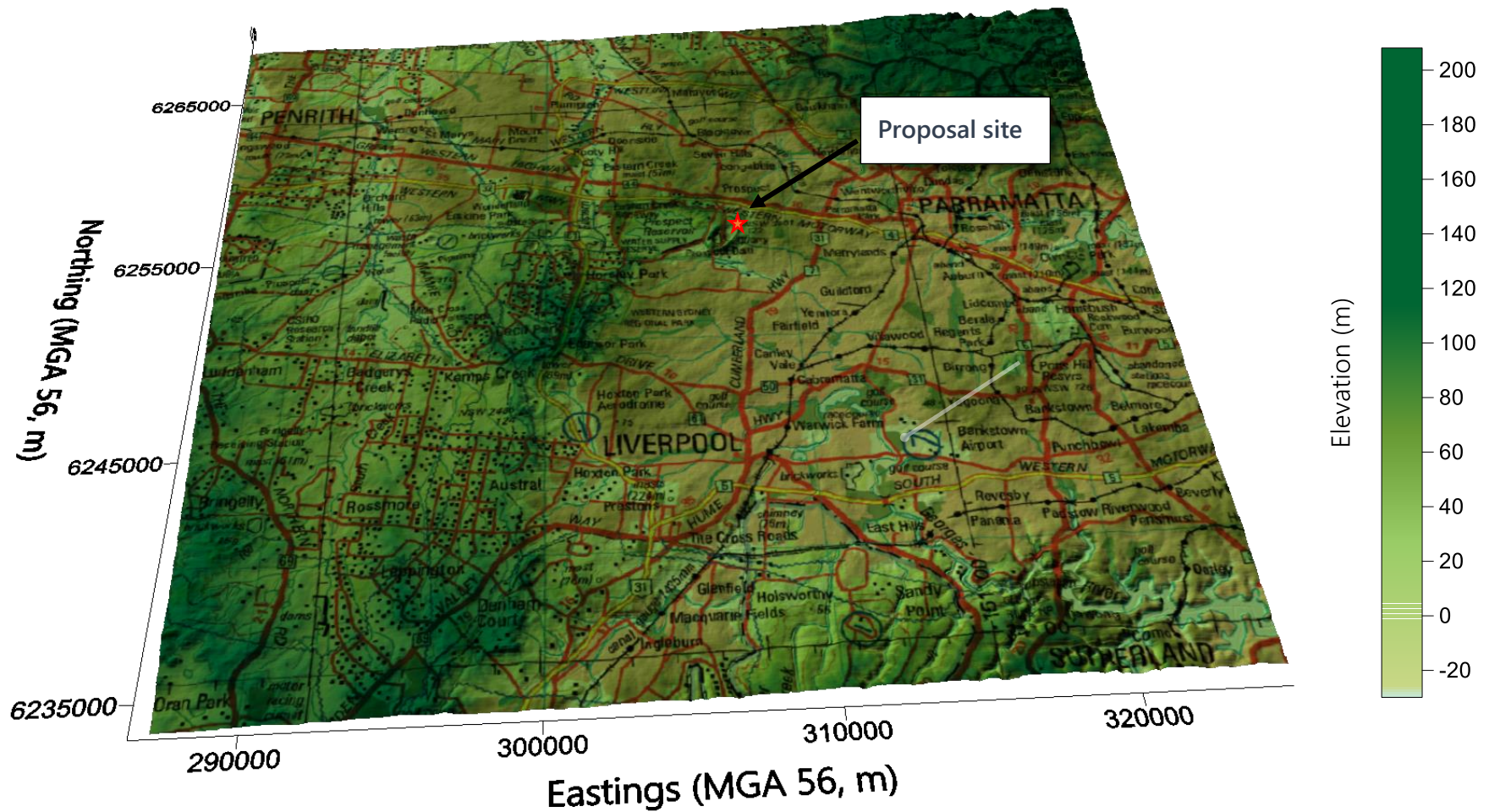
4.1.3. Uniform Receptor Locations

Additional to the sensitive receptors identified in **Section 4.1.2**, a grid of uniform receptor locations, has been used in the AQIA to allow presentation of contour plots of predicted impacts.

4.2. Topography

The elevation of the Proposal site is approximately 60 m to 80 m Australian Height Datum (AHD). The topography between the Proposal site and nearest sensitive receptor locations, is uncomplicated. A 3-dimensional representation of the topography surrounding the Proposal site is presented in **Figure 6** overleaf.

Figure 6 Three-dimensional representation of topography surrounding the Proposal site



Source: Northstar Air Quality

Note: MGA – Map Grid of Australia

4.3. Meteorology

The meteorology experienced within an area, can govern the generation (in the case of wind-dependent emission sources), dispersion, transport and eventual fate of pollutants in the atmosphere. The meteorological conditions surrounding the Proposal site, have been characterised using data collected by the Australian Government Bureau of Meteorology (BoM) at a number of surrounding Automatic Weather Stations (AWS). Meteorology is also measured by DPIE at a number of Air Quality Monitoring Station (AQMS) surrounding the Proposal site (refer **Section 4.4**).

To provide a characterisation of the meteorology which would be expected at the Proposal site, a meteorological modelling exercise has also been performed.

A summary of the inputs and outputs of the meteorological modelling assessment, including validation of those outputs is presented in **Appendix A**.

Seven meteorological stations are located within a 17 km radius of the Proposal site (BoM and DPIE operated). A summary of the relevant AWS is provided in **Table 5** below (listed by proximity) and also displayed in **Figure 7** overleaf.

Table 5 Details of meteorological monitoring surrounding the Proposal site

Site Name	Source	Approximate Location (UTM)		Approximate Distance
		mE	mS	km
Prospect AQMS	DPIE	306 744	6 258 645	2.1
Horsley Park Equestrian Centre AWS – Station # 67119	BoM	301 710	6 252 290	7.9
Sydney Olympic Park AWS – Station # 66212	BoM	321 583	6 245 405	13.5
Bankstown Airport AWS – Station # 66137	BoM	314 217	6 244 523	13.6
Liverpool AQMS	DPIE	306 439	6 243 322	13.7
Chullora AQMS	DPIE	319 177	6 247 940	14.3
St Marys AQMS	DPIE	293 170	6 258 083	14.8

Figure 7 Meteorological monitoring stations surrounding the Proposal site

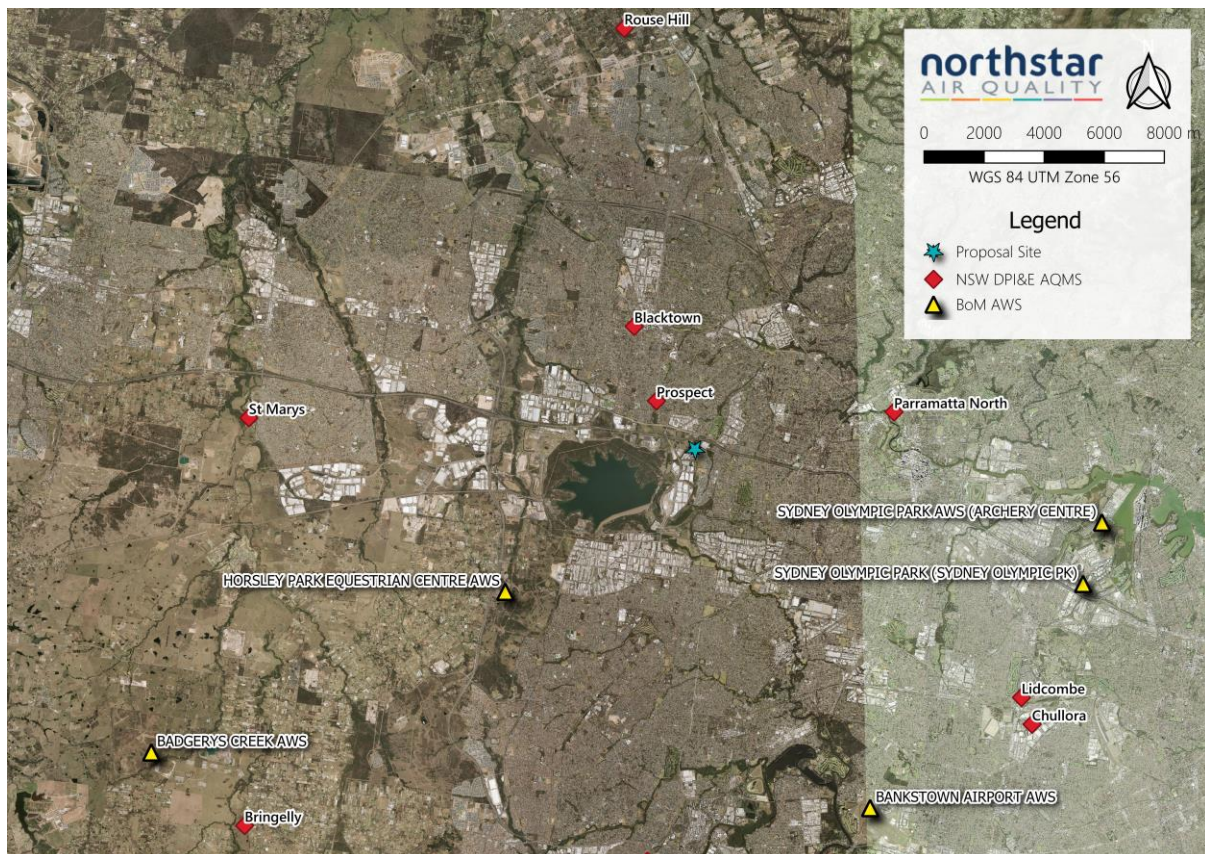


Image courtesy of Google Earth

The meteorological conditions measured at the identified meteorological stations, are presented in **Appendix A**.

It is considered that Prospect AQMS is most likely to represent the conditions at the Proposal site, based upon its proximity and lack of significant topographical features between the two locations. The wind roses presented in **Appendix A** indicate that from 2015 to 2019, winds at Prospect AQMS show similar wind distribution patterns across the years assessed, with a predominant south-westerly wind direction.

The majority of wind speeds experienced at Prospect AQMS over the 5-year period 2015 to 2019 are generally in the range <0.5 metres per second ($\text{m}\cdot\text{s}^{-1}$) to $5.5 \text{ m}\cdot\text{s}^{-1}$ with the highest wind speeds (greater than $8 \text{ m}\cdot\text{s}^{-1}$) occurring from a south-easterly direction. Winds of this speed are not frequent, occurring $<0.1\%$ of the observed hours over the 5-year period.

Given the wind distributions across the years examined, data for the year 2018 has been selected as being appropriate for further assessment, as it best represents the general trend across the 5-year period studied. Reference should be made to **Appendix A** for further details.

4.4. Air Quality

The air quality experienced at any location will be a result of emissions generated by natural and anthropogenic sources on a variety of scales (local, regional and global). The relative contributions of sources at each of these scales to the air quality at a location, will vary based on a wide number of factors including the type, location, proximity and strength of the emission source(s), prevailing meteorology, land uses and other factors affecting the emission, dispersion and fate of those pollutants.

When assessing the impact of any particular source of emissions on the potential air quality at a location, the impact of all other sources of an individual pollutant, should also be assessed. This 'background' (sometimes called 'baseline') air quality conditions will vary depending on the pollutants to be assessed and can often be characterised by using representative air quality monitoring data.

The Proposal site is located proximate to a number of AQMS operated by NSW DPIE. These locations (listed by proximity) are briefly summarised in **Table 6** and presented in **Figure 7**.

Table 6 Closest DPIE AQMS to the Proposal site

AQMS Location	Data Availability	Distance to Site (km)	Screening Parameters				
			2018 Data	Measurements			
				PM ₁₀	PM _{2.5}	TSP	NO ₂
Prospect	2007 - 2019	2.1	✓	✓	✓	✗	✓
Liverpool	1990 - 2019	13.9	✓	✓	✓	✗	✓
Chullora	1992 - 2019	14.3	✓	✓	✓	✗	✓
St Marys	2002-2019	14.9	✓	✓	✓	✗	✓

The closest active AQMS is noted to be located at Prospect and is generally considered to be the monitoring location most reflective of the conditions at the Proposal site.

Appendix B provides a detailed assessment of the background air quality monitoring data collected at the Prospect AQMS.

It is noted that none of the AQMS measure Total Suspended Particulate (TSP) which is of relevance to the expected emissions from the Proposal site. Based upon long-term historic monitoring data, a numerical relationship between TSP and PM₁₀ has been established for the Sydney Metropolitan region. Based upon these data, a relationship between ambient concentrations of TSP : PM₁₀ of 2.0551 : 1 is used to approximate background annual average TSP concentrations. This relationship is established and is used frequently to approximate background annual average TSP concentrations in similar locations (see **Appendix B**).

The impact assessment criteria used for deposited dust (see **Table 3**) are presented as (i) a cumulative deposition rate of 4 g·m⁻²·month⁻¹ and (ii) a discrete deposition rate of 2 g·m⁻²·month⁻¹. In lieu of a background deposition rate to derive a cumulative rate, the incremental impact assessment criterion (2 g·m⁻²·month⁻¹) will be used. This is a commonly adopted approach when background deposition rates are not available.

A detailed summary of the background air quality is presented in **Appendix B**, and a summary of the air quality monitoring data and assumptions used in this assessment are presented in **Table 7**.

Table 7 Summary of background air quality used in the AQIA

Pollutant	Ave Period	Measured Value	Notes
Particles (as TSP) (derived from PM ₁₀)	Annual $\mu\text{g}\cdot\text{m}^{-3}$	43.9	Estimated on a TSP:PM ₁₀ ratio of 2.0551 : 1
Particles (as PM ₁₀) (Prospect)	24-hour $\mu\text{g}\cdot\text{m}^{-3}$	Daily Varying	The 24-hour maximum for PM ₁₀ in 2018 was 113.3 $\mu\text{g}\cdot\text{m}^{-3}$
	Annual $\mu\text{g}\cdot\text{m}^{-3}$	21.9	
Particles (as PM _{2.5}) (Prospect)	24-hour $\mu\text{g}\cdot\text{m}^{-3}$	Daily Varying	The 24-hour maximum for PM _{2.5} in 2018 was 47.5 $\mu\text{g}\cdot\text{m}^{-3}$
	Annual $\mu\text{g}\cdot\text{m}^{-3}$	8.5	
Dust deposition	Annual $\text{g}\cdot\text{m}^{-2}\cdot\text{month}^{-1}$	2.0	Difference in NSW DPIE maximum allowable and incremental impact criterion
Nitrogen dioxide (NO ₂) (Prospect)	1-hour $\mu\text{g}\cdot\text{m}^{-3}$	104.6	Hourly max 1-hr average in 2018
	Annual $\mu\text{g}\cdot\text{m}^{-3}$	18.1	Annual average in 2018

Note: Reference should be made to **Appendix B**

The AQIA has been performed to assess the contribution of the Proposal to the air quality of the surrounding area. A full discussion of how the Proposal impacts upon the air quality is presented in **Section 6**.

Particle levels increased across NSW due to dust from the widespread, intense drought and smoke from bushfires and hazard reduction burning. Most hazardous particle days (92 %) were due to smoke from large hazard reduction burns from April to August (RFS, 2018), and some forest fires. The most extensive dust storm event occurred from 21 to 23 November 2018 (inclusive), when particle levels at many of the sites in the NSW air quality monitoring network exceeded the PM₁₀ national standard. (DPIE, 2019).

Page left intentionally blank

5. METHODOLOGY

5.1. Construction Phase

Construction phase activities have the potential to generate short-term emissions of particulates. Generally, these are associated with uncontrolled (or 'fugitive') emissions and are typically experienced by neighbours as amenity impacts, such as dust deposition and visible dust plumes, rather than associated with health-related impacts. Localised engine-exhaust emissions from construction machinery and vehicles may also be experienced, but given the very minor scale of the proposed works, fugitive dust emissions would have the greatest potential to give rise to downwind air quality impacts.

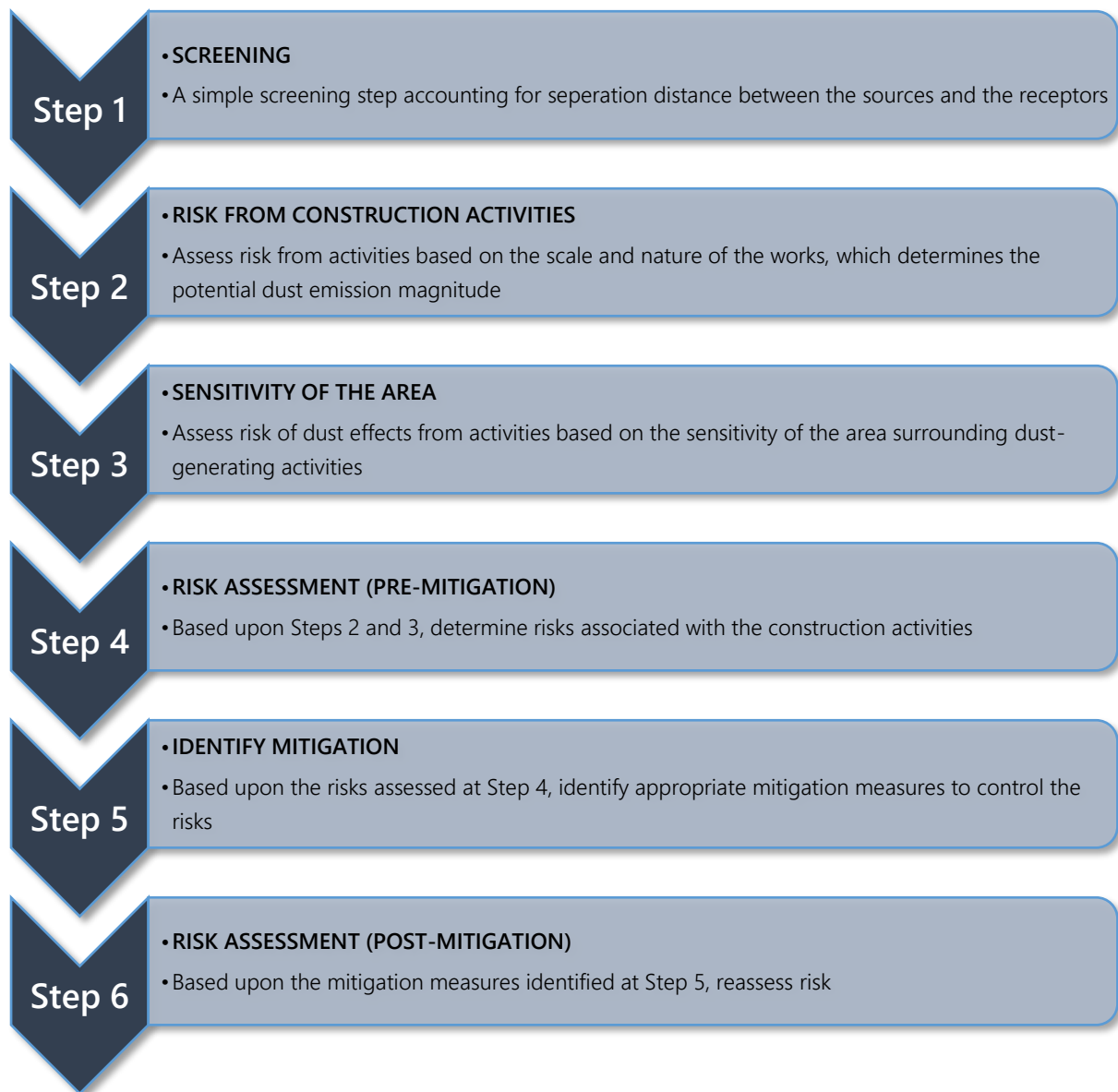
Modelling of dust from construction Proposals is generally not considered appropriate, as there is a lack of reliable emission factors from construction activities upon which to make predictive assessments, and the rates would vary significantly, depending upon local conditions. In lieu of a modelling assessment, the construction-phase impacts associated with the Proposal have been assessed using a risk-based assessment procedure. The advantage of this approach is that it determines the activities that pose the greatest risk, which allows the Construction Environmental Management Plan (CEMP) to focus controls to manage that risk appropriately and reduce the impact through proactive management.

For this risk assessment, Northstar has adapted a methodology presented in the *IAQM Guidance on the Assessment of Dust from Demolition and Construction* developed in the United Kingdom by the Institute of Air Quality Management (IAQM)¹. Reference should be made to **Appendix C** for the methodology.

Briefly, the adapted method uses a six-step process for assessing dust impact risks from construction activities, and to identify key activities for control, as illustrated in **Figure 8** (overleaf).

¹ www.iaqm.co.uk/text/guidance/construction-dust-2014.pdf

Figure 8 Construction phase impact risk assessment methodology



The assessment approach, as illustrated above in **Figure 8**, is detailed in **Appendix C**.

5.2. Operational Phase

5.2.1. Dispersion Modelling

A dispersion modelling assessment has been performed using the NSW EPA approved CALPUFF Atmospheric Dispersion Model. The modelling has been performed in CALPUFF 2-dimensional (2-D) mode. Given the flat (uncomplex) terrain and the proximity of the receptors to the Proposal site, a detailed assessment using a 3-D meteorological dataset is not warranted.

The 2-D meteorological dataset has been developed using The Air Pollution Model (TAPM, v 4.0.5) (see **Appendix A** for further information).

An assessment of the impacts of the operation of activities at the Proposal site has been performed, which characterises the likely day-to-day (and hour-to-hour) operation, approximating average operational characteristics which are appropriate to assess against longer term (annual average) and shorter term (24-hr and 1-hr) criteria for emissions to air.

The modelling scenario provides an indication of the air quality impacts of the operation of activities at the Proposal site. The predictions are termed 'incremental impacts'. Added to the incremental impacts are background air quality concentrations (where available and discussed in **Section 4.4** and **Appendix B**), which represent the air quality which may be expected within the area surrounding the Proposal site, without the impacts of the Proposal itself. The addition of background assumptions to the incremental impacts derived the predicted 'cumulative impacts'.

The following provides a description of the determination of appropriate emissions of air pollutants resulting from the operation of the Proposal.

5.2.2. Emissions Estimation

The estimation of emissions from a process is typically performed using direct measurement or through the application of factors, which appropriately represent the processes under assessment. This assessment has adopted emission factors from the US EPA AP42 emission factor compendium (US EPA, various) specifically Chapter 13 (Miscellaneous Sources) (USEPA, 2011) for the assessment of particulate matter emissions resulting from the use of paved roads by delivery vehicles. To account for gaseous emissions (of NO_x/NO₂) and particulate matter, resulting from idling vehicles at the delivery bays at each warehouse and industrial facility, emissions have been calculated using emission factors adopted from the US EPA document "*Idling Vehicle Emissions for Passenger Cars Light-Duty Trucks, and Heavy-Duty Trucks*" (USEPA, 2008).

Data has been provided by the Applicant to approximate the activities being performed at the Proposal site on a day-to-day basis. These data, and the relevant emission factors associated with each activity are presented in **Table 8** and in **Table 9**. Activity data associated with the activities is presented in **Table 10** and in **Table 11**.

Trip generation rates for each warehouse and industrial facility have been calculated using data adopted within the Traffic Impact Assessment for the Proposal which indicates that an average of 1.892 vehicle trips per 100 m² of gross floor area (GFA) per day would be likely to be generated by a development of this nature (Ason Group, 2020).

It is assumed that 29 % of these vehicles would be trucks, with the remainder being light vehicles.

A total of 34 loading bays across 7 warehouses are associated with the Proposal. The potential for all 34 bays to be occupied by vehicles at any one time is unlikely. Furthermore, the likelihood that all of those 34 vehicles would be simultaneously idling is more unlikely still. However, this assessment needs to assess a potential likely worst-case scenario, especially to allow determination of the possible short term (1-hour) impacts at nearby receptor locations.

An assumption has been made that all 34 bays would be occupied simultaneously, and that the vehicles would be idling for a period of 10 minutes within each hour which is considered representative of average loading / unloading times. **Section 9** provides a discussion of the sensitivity of this assumption to the conclusions of this study.

Operators of trucks actively seek to reduce operational costs and a reduction in vehicle idling time also presents associated reductions in fuel use and engine wear. Engine idling time can be reduced through:

- implementation of operational efficiencies (booking systems, parking rather than queueing vehicles, expanded hours of operation to avoid peak periods);
- the use of idle-off devices; and,
- the use of Auxiliary Power Units (APUs).

Table 8 Emission factors, particulate matter – vehicle transport

Source	Activity rate	Units	Emission factor source	Emission factor			Units
				TSP	PM ₁₀	PM _{2.5}	
Trucks entering / leaving Proposal site	Various (see Table 10)	VKT·hr ⁻¹	AP42 - 13.2.1 Paved Roads Assumed silt loading of road is 0.015 g·m ⁻² (ubiquitous baseline, >10 000 AADT flow, limited access (USEPA, 2011)). Average vehicle weight assumed to be 29 t (70 % Pick Up and Delivery [PUD] vehicles at average of 20 t, 30 % B-Double at average of 50 t).	2.42	0.46	0.11	VKT·hr ⁻¹

Table 9 Emission factors – gaseous and particulate matter emissions, diesel engines

Source	Activity rate	Units	Vehicle type	Op. hours	Emission factor source	NO _x emission factor (g·hr ⁻¹)	PM ₁₀ emission factor (g·hr ⁻¹)	PM _{2.5} emission factor (g·hr ⁻¹)
Trucks idling in bays at warehouses	Various (see Table 11) ^(A)	veh·hr ⁻¹	PUD	24	(USEPA, 2008).	3.705	-	-
			B-Double	24		33.763	1.196	1.1
			Average	24		24.746	0.837	0.77

Notes: A Vehicles assumed to be idling for a 10-minute period each hour

Table 10 Emission estimation, particulate matter - vehicle transport

Facility number	Area of facility (m ²)	Number of daily trips (total)	Number of daily trips (trucks)	Distance of road from Proposal site entrance to facility (m) (2-way)	VKT·day ⁻¹ ^(A)	TSP emission rate (kg·year ⁻¹) ^(A)	PM ₁₀ emission rate (kg·year ⁻¹) ^(A)	PM _{2.5} emission rate (kg·year ⁻¹) ^(A)
1	18 060	364	106	618	65.3	57.7	11.1	2.7
2	25 150	506	147	304	44.6	39.5	7.6	1.8
3	11 500	238	69	488	33.7	29.8	5.7	1.4
4	5 570	113	33	1 676	54.9	48.5	9.3	2.3
5	11 040	228	66	278	18.4	16.2	3.1	0.8
6A	4 470	92	27	266	7.1	6.3	1.2	0.3
6B	4 500	93	27	426	11.5	10.1	1.9	0.5
7A	5 280	107	31	1 156	36.0	31.9	6.1	1.5
7B	3 300	70	20	828	16.8	14.9	2.9	0.7

Note: A: VKT and emissions presented as two-way totals

Note: The areas described above differ marginally from the layout presented in **Figure 2**. The total GFA of the warehouses at the Proposal site is smaller than that subject to modelling (as presented above), and the results presented within this report therefore provide a marginally conservative assessment.

Table 11 Emission estimation – gaseous and particulate matter emissions, diesel engines

Facility number	Number of vehicle bays	NO _x emission rate (kg·year ⁻¹) ^(A)	PM ₁₀ emission rate (kg·year ⁻¹) ^(A)	PM _{2.5} emission rate (kg·year ⁻¹) ^(A)
1	4	138.7	4.7	4.3
2	8	277.5	9.4	8.6
3	8	277.5	9.4	8.6
4	2	69.4	2.3	2.2
5	4	138.7	4.7	4.3
6A	2	69.4	2.3	2.2
6B	2	69.4	2.3	2.2
7A	2	69.4	2.3	2.2
7B	2	69.4	2.3	2.2

Notes: A: Vehicles assumed to be idling for a 10-minute period each hour

Page left intentionally blank

6. CONSTRUCTION AIR QUALITY IMPACT ASSESSMENT

The methodology used to assess construction phase risk is discussed in **Section 5.1** and **Appendix C**.

Briefly, after 'Step 1 Screening' (which excludes those receptors that are sufficiently distanced from construction phase activities to not warrant further assessment) *risk* is determined by the product of *receptor sensitivity* and the identified *magnitude of impacts* associated with the construction phase activities (construction, track-out, demolition and earthworks [as applicable]). The definitions used to screen receptors, determine receptor sensitivity and the magnitude of impacts are all presented in **Appendix C**.

6.1. Screening Based on Separation Distance

The screening criteria applied to the identified sensitive receptors, are whether they are located in excess of:

- 50 m from the route used by construction vehicles on public roads.
- 350 m from the boundary of the site.
- 500 m from the site entrance.
- Track-out is assumed to affect roads up to 100 m from the site entrance.

Further to the above distance-based screening criteria, the construction activities are screened by the required construction activities.

Table 12 overleaf presents the identified discrete sensitive receptors, with the corresponding estimated screening distances as compared to the screening criteria.

Table 12 Construction phase impact screening criteria distances

Rec	Location	Land Use	Screening Distance (m)		
			Boundary (350m)	Site Entrance (500m)	Construction route (50m)
R1	1 Muttong Street, Pemulwuy	Residential	50	98	23
R2	9 Muttong Street, Pemulwuy	Residential	50	58	22
R3	19 Muttong Street, Pemulwuy	Residential	51	38	27
R4	27 Muttong Street, Pemulwuy	Residential	50	70	70
R5	35 Muttong Street, Pemulwuy	Residential	51	110	110
R6	1 Foundation Place, Pemulwuy	Industrial (low)	108	452	452
R7	Foundation Place, Pemulwuy	Industrial (low)	17	366	366
R8	2 Foundation Place, Pemulwuy	Industrial (low)	74	633	633

With reference to **Table 12**, sensitive receptors are noted to be within the screening distance boundaries and therefore require further assessment as summarised in **Table 13**.

Table 13 Application of Step 1 Screening

Construction Impact	Screening Criteria	Step 1 Screening	Comments
Demolition	350 m from boundary 500 m from site entrance	Not screened	Receptors identified within the screening distance
Earthworks	350 m from boundary 500 m from site entrance		
Construction	350 m from boundary 500 m from site entrance		
Trackout	100 m from site entrance		
Construction Traffic	50 m from roadside		

6.2. Impact Magnitude

The footprint of the Proposal site (the area affected) is estimated as being approximately 185 000 m² (18.5 hectares [ha]) in area.

The Proposal would involve demolition of a small number of current industrial buildings within the area, earthworks for the Proposal site area and the construction of seven warehouse with an approximate (total) building volume of 1 470 000 m³, assuming a footprint of the warehouse and office areas of 105 000 m² and an average building height of 14 m.

The assumed supply route around the Proposal site during construction works may be up 2 100 m in one-way length. It is anticipated that more than 12 heavy vehicle movements per day would be required each day to service the Proposal site. For the purposes of the assessment, the route for construction traffic to/from the Proposal site is assumed to be along arterial roads, heading northbound along Clunies Ross St towards the M4 Western Motorway.

Based upon the above assumptions and the assessment criteria presented in **Appendix C**, the dust emission magnitudes are as presented in **Table 14**. It is noted that the dust-emission magnitudes assume that construction would be performed across the entire area subject to this SSD at one time. This is highly unlikely to occur.

Table 14 Construction phase impact categorisation of dust emission magnitude

Activity	Dust Emission Magnitude
Demolition	Large
Earthworks and enabling works	Large
Construction	Large
Track-out	Large
Construction traffic routes	Large

6.3. Sensitivity of an Area

6.3.1. Land Use Value

The assessment criteria as described in **Section 5.1**, including the conditions pertaining to *land use value* of the area surrounding the Proposal site, is provided in detail in **Appendix C** of this report.

The maximum *land use value* across the identified receptors has been taken forward to be conservative. It is concluded to be *high* for health impacts and for dust soiling, given the distance between the receptors and the Proposal site and the nature of receptors surrounding the site.

6.3.2. Sensitivity of an Area

The assessment criteria as described in **Section 5.1**, including the conditions pertaining to *sensitivity of the area* surrounding the Proposal site, is provided in detail in **Appendix C** of this report.

The sensitivity of the surrounding area to health effects and dust soiling may be identified as being *low*. The assumed existing background annual average PM₁₀ concentrations (as measured at Prospect in 2018) are reported in **Section 4.4** and presented in **Table 6**. The annual average PM₁₀ concentration as measured at Prospect in 2018 was 21.9 µg·m⁻³, which, along with the land use value calculated above, classifies the sensitivity of the area as *medium* for dust health impacts.

6.4. Risk (Pre-Mitigation)

Given the sensitivity of the identified receptors is classified as 'low' for dust soiling, and 'medium' for health effects, and the dust emission magnitudes for the various construction phase activities as shown in **Table 14**, the resulting risk of air quality impacts (without mitigation) is as presented in **Table 15**.

Table 15 Risk of air quality impacts from construction activities

Impact	Sensitivity of Area	Dust Emission Magnitude					Preliminary Risk				
		Demolition	Earthworks	Construction	Track-out	Const. Traffic	Demolition	Earthworks	Construction	Track-out	Const. Traffic
Dust Soiling	low	large	large	large	large	large	high	med	med	med	med
Human Health	med	large	large	large	large	large	high	med	med	med	med

Note: med. = medium, scr. = screened

The risks summarised in **Table 15** show that there is a *medium* risk of adverse dust soiling and human health impacts at all properties, if no mitigation measures were to be applied to control emissions associated with construction-phase activities.

6.5. Identified Mitigation

The following represents a selection of recommended mitigation measures recommended by the IAQM methodology for a *medium* risk site for construction and construction traffic. A detailed review of the recommendations would be performed once details of the construction phase are available.

Table 16 lists the relevant mitigation measures identified, and have been presented as follows:

- **N** = not required (although they may be implemented voluntarily).
- **D** = desirable (to be considered as part of the Construction Environment Management Plan (CEMP) but may be discounted if justification is provided).
- **H** = highly recommended (to be implemented as part of the CEMP and should only be discounted if site-specific conditions render the requirement invalid or otherwise undesirable).

Table 16 Site-specific management measures

Identified Mitigation		Unmitigated Risk
1	Communications	Medium
1.1	Develop and implement a stakeholder communications plan that includes community engagement before work commences on site.	H
1.1	Display the name and contact details of person(s) accountable for air quality and dust issues on the site boundary. This may be the environment manager/engineer or the site manager.	H
1.2	Display the head or regional office contact information.	H
1.3	Develop and implement a Dust Management Plan (DMP), which may include measures to control other emissions, approved by the relevant regulatory bodies.	H
2	Site Management	Medium
2.1	Record all dust and air quality complaints, identify cause(s), take appropriate measures to reduce emissions in a timely manner, and record the measures taken.	H
2.2	Make the complaints log available to the local authority when asked.	H
2.3	Record any exceptional incidents that cause dust and/or air emissions, either on- or offsite, and the action taken to resolve the situation in the log book.	H
2.4	Hold regular liaison meetings with other high-risk construction sites within 500 m of the site boundary, to ensure plans are coordinated and dust and particulate matter emissions are minimised. It is important to understand the interactions of the off-site transport/ deliveries which might be using the same strategic road network routes.	N
3	Monitoring	Medium
3.1	Undertake daily on-site and off-site inspections where receptors (including roads) are nearby, to monitor dust, record inspection results, and make the log available to the local authority when asked. This should include regular dust soiling checks of surfaces such as street furniture, cars and window sills within 100m of site boundary.	D
3.2	Carry out regular site inspections to monitor compliance with the dust management plan / CEMP, record inspection results, and make an inspection log available to the local authority when asked.	H
3.3	Increase the frequency of site inspections by the person accountable for air quality and dust issues on site when activities with a high potential to produce dust are being carried out and during prolonged dry or windy conditions.	H
3.4	Agree dust deposition, dust flux, or real-time continuous monitoring locations with the relevant regulatory bodies. Where possible commence baseline monitoring at least three months before work commences on site or, if it a large site, before work on a phase commences.	H
4	Preparing and Maintaining the Site	Medium
4.1	Plan site layout so that machinery and dust causing activities are located away from receptors, as far as is possible.	H

Identified Mitigation		Unmitigated Risk
4.2	Avoid site runoff of water or mud after treatment and cleaning.	H
4.3	Keep site fencing, barriers and scaffolding clean using wet methods.	H
4.4	Cover, seed or fence stockpiles to prevent wind erosion	H
4.5	Keep site fencing, barriers and scaffolding clean using wet methods.	H
4.6	Remove materials that have a potential to produce dust from site as soon as possible, unless being re-used on site. If they are being re-used on-site cover as described below	H
4.7	Cover, seed or fence stockpiles to prevent wind erosion	H
5	Operating Vehicle/Machinery and Sustainable Travel	Medium
5.1	Ensure all on-road vehicles comply with relevant vehicle emission standards, where applicable	H
5.2	Ensure all vehicles switch off engines when stationary - no idling vehicles	H
5.3	Impose and signpost a maximum-speed-limit of 25 km·h ⁻¹ on surfaced and 15 km·h ⁻¹ on unsurfaced haul roads and work areas (if long haul routes are required these speeds may be increased with suitable additional control measures provided, subject to the approval of the nominated undertaker and with the agreement of the local authority, where appropriate	D
5.4	Produce a Construction Logistics Plan to manage the sustainable delivery of goods and materials.	H
5.5	Implement a Travel Plan that supports and encourages sustainable travel (public transport, cycling, walking, and car-sharing)	D
6	Operations	Medium
6.1	Only use cutting, grinding or sawing equipment fitted or in conjunction with suitable dust suppression techniques such as water sprays or local extraction, e.g. suitable local exhaust ventilation systems	H
6.2	Ensure an adequate water supply on the site for effective dust/particulate matter suppression/ mitigation, using non-potable water where possible and appropriate	H
6.3	Use enclosed chutes and conveyors and covered skips	H
6.4	Minimise drop heights from conveyors, loading shovels, hoppers and other loading or handling equipment and use fine water sprays on such equipment wherever appropriate	H
6.5	Ensure equipment is readily available on site to clean any dry spillages, and clean up spillages as soon as reasonably practicable after the event using wet cleaning methods.	H
7	Waste Management	Medium
7.1	Avoid bonfires and burning of waste materials.	H
8	Measures Specific to Demolition	High
8.1	Soft strip inside buildings before demolition (retaining walls and windows in the rest of the building where possible, to provide a screen against dust).	H

Identified Mitigation		Unmitigated Risk
8.2	Ensure effective water suppression is used during demolition operations. Hand held sprays are more effective than hoses attached to equipment as the water can be directed to where it is needed. In addition, high volume water suppression systems, manually controlled, can produce fine water droplets that effectively bring the dust particles to the ground.	H
8.3	Avoid explosive blasting, using appropriate manual or mechanical alternatives.	H
8.4	Bag and remove any biological debris or damp down such material before demolition.	H
8.5	Re-vegetate earthworks and exposed areas/soil stockpiles to stabilise surfaces as soon as practicable.	H
8.6	Use Hessian, mulches or trackifiers where it is not possible to re-vegetate or cover with topsoil, as soon as practicable.	H
8.7	Only remove the cover in small areas during work and not all at once	H
9	Measures Specific to Construction	Medium
9.1	Avoid scabbling (roughening of concrete surfaces) if possible	D
9.2	Ensure sand and other aggregates are stored in bunded areas and are not allowed to dry out, unless this is required for a particular process, in which case ensure that appropriate additional control measures are in place	H
9.3	Ensure bulk cement and other fine powder materials are delivered in enclosed tankers and stored in silos with suitable emission control systems to prevent escape of material and overfilling during delivery.	D
9.4	For smaller supplies of fine power materials ensure bags are sealed after use and stored appropriately to prevent dust	D
10	Measures Specific to Track-Out	Medium
10.1	Use water-assisted dust sweeper(s) on the access and local roads to remove, as necessary, any material tracked out of the site.	H
10.2	Avoid dry sweeping of large areas.	H
10.3	Ensure vehicles entering and leaving sites are covered to prevent escape of materials during transport.	H
10.4	Inspect on-site haul routes for integrity and instigate necessary repairs to the surface as soon as reasonably practicable.	H
10.5	Record all inspections of haul routes and any subsequent action in a site log book.	H
10.6	Install hard surfaced haul routes, which are regularly damped down with fixed or mobile sprinkler systems, or mobile water bowsers and regularly cleaned.	H
10.7	Implement a wheel washing system (with rumble grids to dislodge accumulated dust and mud prior to leaving the site where reasonably practicable).	H
10.8	Ensure there is an adequate area of hard surfaced road between the wheel wash facility and the site exit, wherever site size and layout permits.	H
10.9	Access gates to be located at least 10 m from receptors where possible.	H

Identified Mitigation		Unmitigated Risk
11	Specific Measures to Construction Traffic (adapted)	Medium
11.1	Ensure all on-road vehicles comply with relevant vehicle emission standards, where applicable	H
11.2	Ensure bulk cement and other fine powder materials are delivered in enclosed tankers and stored in silos with suitable emission control systems to prevent escape of material and overfilling during delivery.	D
11.3	Ensure vehicles entering and leaving sites are covered to prevent escape of materials during transport.	H
11.4	Inspect on-site haul routes for integrity and instigate necessary repairs to the surface as soon as reasonably practicable.	H
11.5	Record all inspections of haul routes and any subsequent action in a site log book.	H

Notes D = desirable (to be considered), H = highly recommended (to be implemented), N = not required (although can be voluntarily implemented)

6.6. Risk (Post-Mitigation)

For almost all construction activity, the adapted methodology notes that the aim should be to prevent significant effects on receptors through the use of effective mitigation and experience shows that this is normally possible.

Given the size of the Proposal site, the distance to sensitive receptors and of the activities to be performed, residual impacts associated with fugitive dust emissions from the Proposal, would be anticipated to be '*negligible*' for all activities.

7. OPERATIONAL AIR QUALITY IMPACT ASSESSMENT

The methodology used to assess operational phase impacts is discussed in **Section 5.2**. This section presents the results of the dispersion modelling assessment and uses the following terminology:

- **Incremental impact** – relates to the concentrations predicted as a result of the operation of the proposal in isolation.
- **Cumulative impact** – relates to the concentrations predicted as a result of the operation of the proposal PLUS the background air quality concentrations discussed in **Section 4.4**.

The results are presented in this manner to allow examination of the likely impact of the proposal in isolation and the contribution to air quality impacts in a broader sense.

In the presentation of results, the tables included shaded cells which represent the following:

Model prediction	Pollutant concentration / deposition rate less than the relevant criterion	Pollutant concentration / deposition rate equal to, or greater than the relevant criterion
------------------	--	--

7.1. Particulate Matter

Results are presented in this section for the predictions of particulate matter (TSP, PM₁₀, PM_{2.5} and dust deposition). The averaging periods associated with the criteria for these pollutants is 24-hour and annual averages, as specified in **Table 3**. The emissions adopted for this scenario reflect the operational profile of the Proposal over those averaging periods (refer **Section 5.2.2**).

7.1.1. Annual Average TSP, PM₁₀ and PM_{2.5}

The predicted annual average particulate matter concentrations (as TSP, PM₁₀ and PM_{2.5}) resulting from the Proposal operations, are presented in **Table 17** overleaf.

The results indicate that predicted incremental concentrations of TSP, PM₁₀ and PM_{2.5} at residential receptor locations are low (less than (<) 4.2 % of the annual average TSP criterion, <0.5 % of the annual average PM₁₀ criterion and <1.3 % of the PM_{2.5} criterion).

The addition of existing background concentrations (refer **Section 4.4**) results in predicted concentrations of annual average TSP being <53 % and annual average PM₁₀ being ≤88.0 % of the relevant criteria, at the nearest residential receptors.

The existing adopted annual average PM_{2.5} background concentration is shown to be in exceedance of the relevant criterion, even without the operation of the Proposal added.

Examination of the predicted PM_{2.5} impacts which would result from the operation of the Proposal, indicates that these concentrations are predicted to be $\leq 0.1 \mu\text{g}\cdot\text{m}^{-3}$ at all surrounding receptors.

Table 17 Predicted annual average TSP, PM₁₀ and PM_{2.5} concentrations

Receptor	Annual Average Concentration ($\mu\text{g}\cdot\text{m}^{-3}$)								
	TSP			PM ₁₀			PM _{2.5}		
	Incremental Impact	Background	Cumulative Impact	Incremental Impact	Background	Cumulative Impact	Incremental Impact	Background	Cumulative Impact
R1	1.3	43.9	45.2	<0.1	21.9	22.0	<0.1	8.5	8.6
R2	0.7	43.9	44.6	<0.1	21.9	22.0	<0.1	8.5	8.6
R3	0.5	43.9	44.4	<0.1	21.9	22.0	<0.1	8.5	8.6
R4	0.4	43.9	44.3	<0.1	21.9	22.0	<0.1	8.5	8.6
R5	2.4	43.9	46.3	<0.1	21.9	22.0	<0.1	8.5	8.6
R6	3.7	43.9	47.6	<0.1	21.9	22.0	<0.1	8.5	8.6
R7	0.6	43.9	44.5	<0.1	21.9	22.0	<0.1	8.5	8.6
R8	1.6	43.9	45.5	<0.1	21.9	22.0	<0.1	8.5	8.6
Criterion	-	90		-	25		-	8	

No contour plots of annual average TSP, PM₁₀ or PM_{2.5} are presented, given the minor contribution from the Proposal at the nearest relevant sensitive receptors.

The performance of the Proposal does not in itself result in any exceedances of the annual average particulate matter impact assessment criteria.

7.1.2. Annual Average Dust Deposition Rates

Table 18 below presents the annual average dust deposition predicted as a result of the operations at the Proposal site. An assumed background dust deposition of $2 \text{ g}\cdot\text{m}^{-2}\cdot\text{month}^{-1}$ is presented in **Table 18**, although comparison of the incremental concentration with the incremental criterion of $2 \text{ g}\cdot\text{m}^{-2}\cdot\text{month}^{-1}$ is also valid (as discussed within **Section 4.4**). In either case, the resulting conclusions drawn are identical. Annual average dust deposition is predicted to meet the criteria at all receptors surrounding the Proposal site where the predicted impacts are less than or equal to 5 % of the incremental criterion at receptor locations. No contour plot of annual average dust deposition is presented, given the minor contribution from the Proposal at the nearest sensitive receptors.

Table 18 Predicted annual average dust deposition

Receptor	Annual Average Dust Deposition ($\text{g}\cdot\text{m}^{-2}\cdot\text{month}^{-1}$)		
	Incremental Impact	Background	Cumulative Impact
R1	<0.1	2.0	2.1
R2	<0.1	2.0	2.1
R3	<0.1	2.0	2.1
R4	<0.1	2.0	2.1
R5	<0.1	2.0	2.1
R6	<0.1	2.0	2.1
R7	<0.1	2.0	2.1
R8	<0.1	2.0	2.1
Criterion	2.0	-	4.0

The performance of the Proposal does not result in any exceedances of the annual average dust deposition impact assessment criteria.

7.1.3. Maximum 24-Hour PM_{10} and $\text{PM}_{2.5}$

Table 19 below presents the maximum 24-hour average PM_{10} and $\text{PM}_{2.5}$ concentrations predicted to occur at the nearest receptors, as a result of the Proposal operations. No background concentrations are included within this table.

Table 19 Predicted maximum incremental 24-hour PM_{10} and $\text{PM}_{2.5}$ concentrations

Receptor	Maximum 24-hour average concentration ($\mu\text{g}\cdot\text{m}^{-3}$)	
	PM_{10}	$\text{PM}_{2.5}$
R1	0.1	0.1
R2	0.2	0.1
R3	0.2	0.1
R4	0.2	0.1
R5	0.1	0.1
R6	0.1	<0.1
R7	0.2	0.1
R8	0.1	0.1

The predicted incremental concentration of PM₁₀ and PM_{2.5}, are demonstrated to be minor (refer **Table 19** above).

The predicted maximum 24-hour average PM₁₀ and PM_{2.5} concentrations resulting from the operation of the Proposal, with background included are presented in **Table 20** and **Table 21** (overleaf) respectively. These results as presented, demonstrate that even with the addition of background concentrations, the cumulative impacts are not in exceedance of the relevant criterion.

Results are presented in **Table 20** and **Table 21** for those receptors at which the greatest impacts have been predicted.

The left side of the tables show the predicted concentration on days with the highest regional background, and the right side shows the total predicted concentration on days with the highest predicted incremental concentrations respectively.

For PM₁₀ and PM_{2.5}, the maximum cumulative impact is predicted at Receptor R4 (the left hand side of **Table 20**), and the maximum incremental impact is predicted at Receptor R7 (the right hand side of **Table 20**).

The analysis indicates that no exceedances of the 24-hour average impact assessment criteria for PM₁₀ or PM_{2.5} are likely to occur, as a result of the operation of the Proposal. Examination of the results for all receptors indicates, that no exceedances of the PM₁₀ or PM_{2.5} criteria are predicted at any receptor location.

Table 20 Summary of contemporaneous impact and background – PM₁₀

Date	24-hour average PM ₁₀ concentration (µg·m ⁻³) Receptor 4			Date	24-hour average PM ₁₀ concentration (µg·m ⁻³) Receptor 7		
	Incremental Impact	Background	Cumulative Impact		Incremental Impact	Background	Cumulative Impact
22/11/2018	<0.1	113.3	113.4	5/09/2018	0.2	15.0	15.2
19/03/2018	<0.1	70.2	70.3	9/12/2018	0.2	30.6	30.8
28/05/2018	<0.1	65.8	65.9	16/10/2018	0.2	17.3	17.5
18/07/2018	<0.1	61.9	62.0	23/03/2018	0.2	20.6	20.8
15/02/2018	<0.1	61.6	61.7	28/06/2018	0.1	10.6	10.7
29/05/2018	<0.1	58.7	58.8	7/06/2018	0.1	16.6	16.7
21/11/2018	<0.1	55.7	55.8	18/02/2018	0.1	27.3	27.4
19/07/2018	<0.1	54.4	54.5	20/12/2018	0.1	19.0	19.1
18/03/2018	<0.1	47.9	48.0	14/11/2018	0.1	13.5	13.6
14/04/2018	<0.1	47.8	47.9	15/10/2018	0.1	15.3	15.4
These data represent the highest Cumulative Impact 24-hour PM ₁₀ predictions (outlined in red) as a result of the operation of the Proposal.				These data represent the highest Incremental Impact 24-hour PM ₁₀ predictions (outlined in blue) as a result of the operation of the Proposal.			

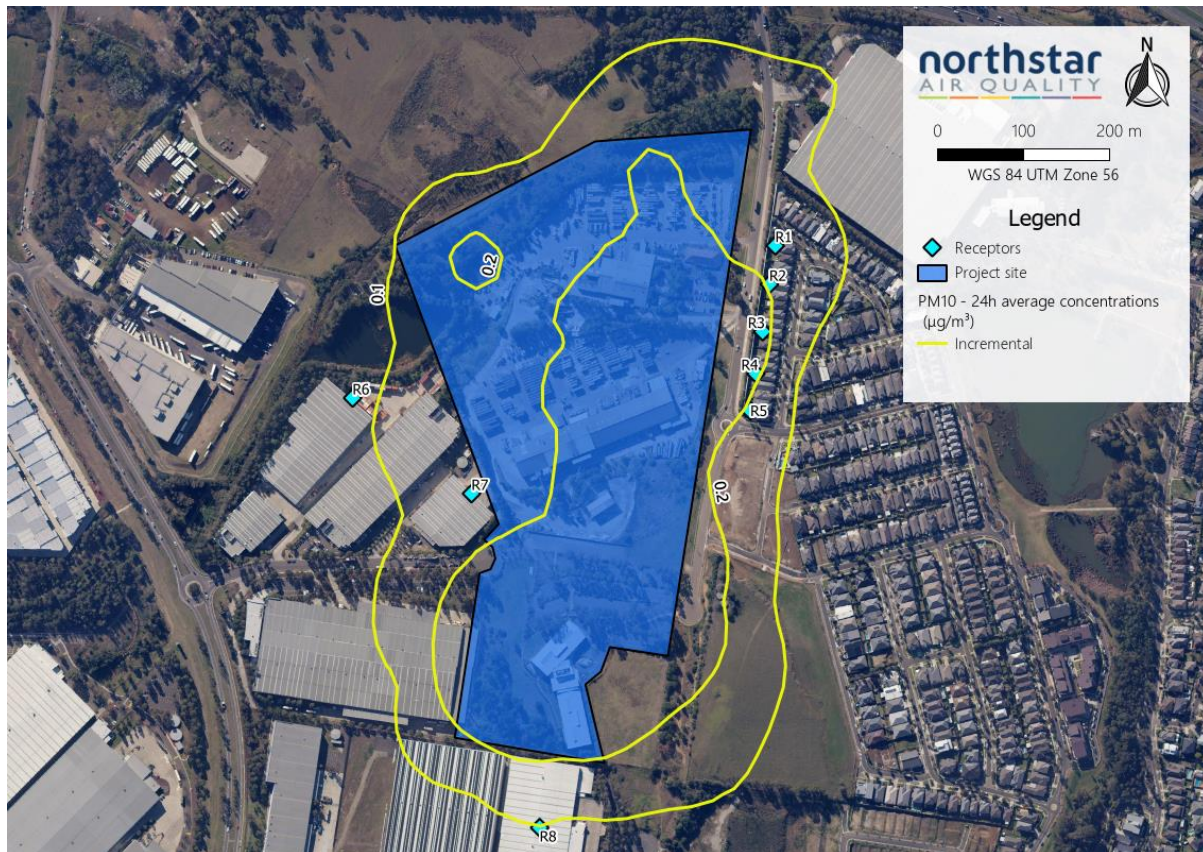
Table 21 Summary of contemporaneous impact and background – PM_{2.5}

Date	24-hour average PM _{2.5} concentration ($\mu\text{g}\cdot\text{m}^{-3}$) – Receptor 18			Date	24-hour average PM _{2.5} concentration ($\mu\text{g}\cdot\text{m}^{-3}$) – Receptor 18		
	Incremental Impact	Background	Cumulative Impact		Incremental Impact	Background	Cumulative Impact
29/05/2018	<0.1	47.5	47.6	5/09/2018	0.1	9.1	9.2
28/05/2018	<0.1	42.5	42.6	16/10/2018	<0.1	5.5	5.6
6/05/2018	<0.1	27.1	27.2	9/12/2018	<0.1	8.6	8.7
27/05/2018	<0.1	27.0	27.1	23/03/2018	<0.1	6.5	6.6
15/07/2018	<0.1	23.1	23.2	28/06/2018	<0.1	9.6	9.7
9/05/2018	<0.1	21.7	21.8	14/11/2018	<0.1	2.9	3.0
25/04/2018	<0.1	20.6	20.7	18/02/2018	<0.1	8.6	8.7
8/05/2018	<0.1	19.9	20	24/01/2018	<0.1	10.3	10.4
27/07/2018	<0.1	19.5	19.6	20/12/2018	<0.1	8.7	8.8
26/08/2018	<0.1	18.4	18.5	7/06/2018	<0.1	8.2	8.3
These data represent the highest Cumulative Impact 24-hour PM _{2.5} predictions (outlined in red) as a result of the operation of the Proposal.				These data represent the highest Incremental Impact 24-hour PM _{2.5} predictions (outlined in blue) as a result of the operation of the Proposal.			

Contour plots of the predicted incremental 24-hour PM₁₀ concentrations associated with the Proposal are presented in **Figure 9** to allow examination of the distribution of particulate matter in the area surrounding the Proposal.

The performance of the Proposal does not result in any exceedances of the maximum 24-hour average particulate matter impact assessment criteria.

Figure 9 Predicted maximum incremental 24-hour PM₁₀ impacts



7.2. Nitrogen Dioxide

Results are presented in this section for the predictions of nitrogen dioxide (NO₂). The averaging periods associated with the criteria for these pollutants is 1-hour and an annual average, as specified in **Table 3**. The emissions adopted for this scenario, reflect the operational profile of the Proposal over those averaging periods (refer **Section 5.2.2**).

Emissions of NO_x have been calculated, with subsequent ground-level concentrations predicted using dispersion modelling techniques. Given that NO_x is a mixture of NO₂ and nitric oxide (NO), conversion of NO_x predictions to NO₂ concentrations may be performed. Within this assessment, the conservative assumption that all NO is converted to NO₂ has been adopted (i.e. 100 % of NO_x is emitted as NO₂). This is in accordance with a Method 1, Level 1 assessment as outlined within the Approved Methods. In that method, the maximum dispersion model prediction is added to the maximum background concentration to provide a cumulative impact.

The predicted maximum 1-hour and annual average NO₂ concentrations resulting from the Proposal operations, are presented in **Table 22**.

Table 22 Predicted 1 hour and annual average nitrogen dioxide concentrations

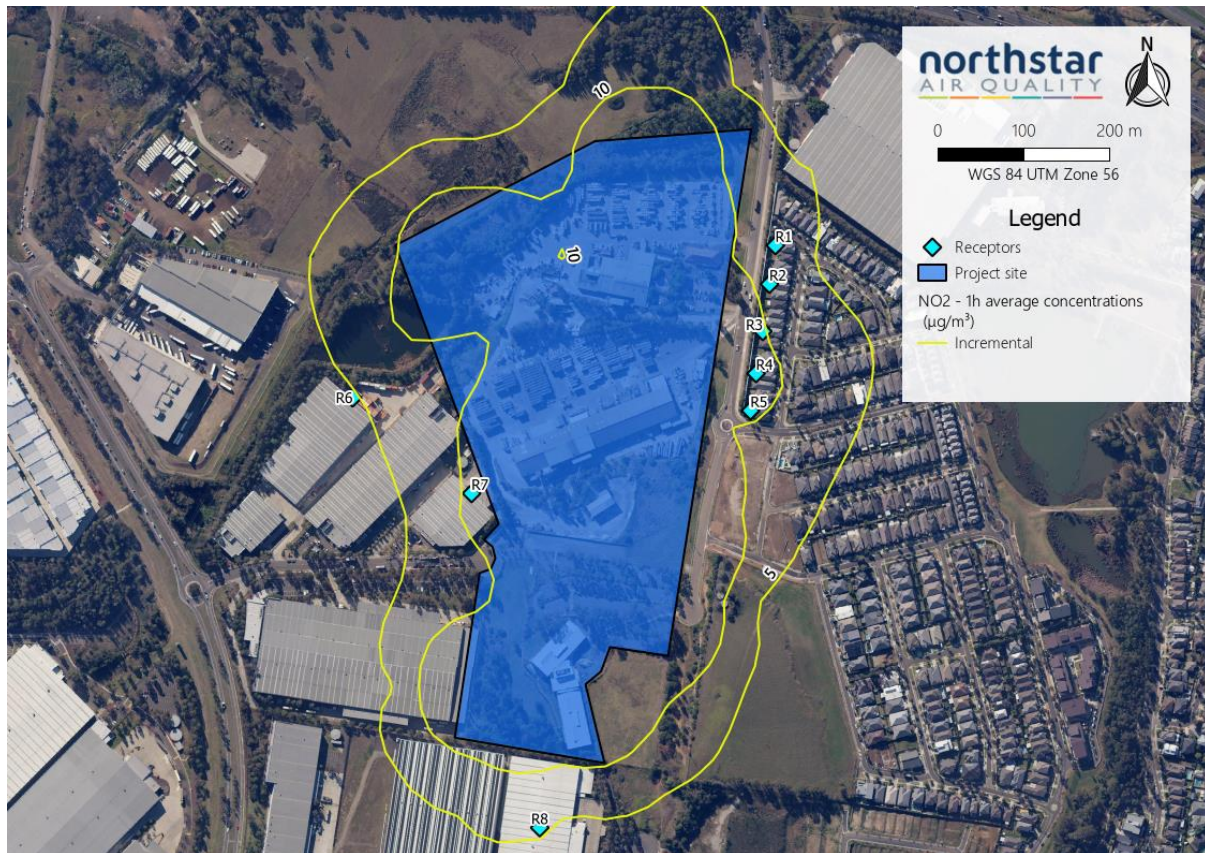
Rec.	Nitrogen dioxide (NO ₂) concentration (µg·m ⁻³)					
	1 hour			Annual Average		
	Increment	Background	Cumulative	Increment	Background	Cumulative
R1	7.2	104.6	111.8	0.3	18.1	18.4
R2	6.9	104.6	111.5	0.3	18.1	18.4
R3	8.4	104.6	112.9	0.4	18.1	18.5
R4	12.0	104.6	116.6	0.4	18.1	18.5
R5	10.2	104.6	114.7	0.4	18.1	18.5
R6	3.8	104.6	108.4	0.2	18.1	18.3
R7	10.5	104.6	115.0	0.4	18.1	18.6
R8	5.0	104.6	109.6	0.2	18.1	18.3

The results indicate, that predicted incremental concentrations of combustion-related pollutants (characterised by NO₂), are below the criteria at all surrounding receptor locations. At the worst affected receptor (R4) and for the pollutant with the highest predicted concentrations (1-hour maximum NO₂), predicted increments are shown to be less than 5 % of the relevant criterion as a result of the Proposal, even using a conservative approach to determine the NO_x to NO₂ conversion. The calculated cumulative impacts (Proposal plus background), are shown to result in impacts less than the criteria.

The performance of the Proposal does not result in any exceedances of the criteria for combustion related pollutants.

A contour plot of the predicted maximum 1-hour incremental NO₂ impact is presented in **Figure 10**.

Figure 10 Predicted maximum incremental 1-hour NO_2 impacts



Page left intentionally blank

8. MITIGATION AND MONITORING

8.1. Construction Phase Mitigation

The potential impacts associated with construction phase activities has been performed using a risk-based assessment procedure. This approach is preferred, principally because emissions from construction activities are hard to estimate, as they occur over short-term periods and the rate of actual emissions, is highly dependent upon the prevailing meteorology and conditions coincidental to the performance of the specific operations. Also these can be influenced significantly, by the manner in which those activities are performed and managed.

To offer a methodology to identify potential construction phase risks and where controls are required, the IAQM risk-based assessment procedure has been adopted. This methodology has been adapted for use in Australia by Northstar and used previously in NSW and Australia.

The published procedure, assesses risk associated with various construction-phase activities, including demolition, earthworks, construction and track-out. The identified risks are summarised in **Section 6.4**, and the mitigation measures identified to manage that risk are presented in **Section 6.5**. To manage the risks, the identified mitigation measures presented in **Table 15** are anticipated to be implemented in the Construction Environmental Management Plan (CEMP)².

8.2. Operational Phase Mitigation

Based on the findings of the air quality impact assessment, it is considered that the level of activity being performed at the Proposal site would result in minor incremental impacts at all surrounding receptor locations.

In the case of predicted incremental annual, average particulate matter concentrations (as TSP, PM₁₀ and PM_{2.5}), the predicted ground-level concentrations are predicted to be low:

- TSP: 3.7 µg·m⁻³;
- PM₁₀: <0.1 µg·m⁻³; and
- PM_{2.5}: <0.1 µg·m⁻³.

The incremental dust deposition rate is predicted to be < 0.1 g·m⁻²·month⁻¹.

In the case of predicted incremental 24-hour average particulate matter concentrations (as PM₁₀ and PM_{2.5}), the predicted ground-level concentrations are predicted to be minor:

- PM₁₀: 0.2 µg·m⁻³; and

² <https://www.planning.nsw.gov.au/~media/Files/DPE/Guidelines/guideline-for-the-preparation-of-environmental-management-plans-2004.ashx?la=en>

- $\text{PM}_{2.5}$: $0.1 \mu\text{g}\cdot\text{m}^{-3}$.

Accounting for the background air quality assumptions, the assessment does not predict any exceedances of the respective criteria.

In regard to nitrogen dioxide, the predicted maximum increment 1-hour and annual average predictions, are $12.0 \mu\text{g}\cdot\text{m}^{-3}$ and $0.4 \mu\text{g}\cdot\text{m}^{-3}$ respectively. Accounting for the relevant background assumptions, the assessment does not predict an exceedance of the relevant impact assessment criteria.

No specific mitigation measures are considered to be required to minimise impacts on surrounding receptor locations. Good site management practices, including the observation of speed limits on site, and the minimisation of vehicle use (through avoidance of engine idling) would be sufficient to ensure that no off-site impacts are experienced.

8.3. Monitoring

Given the discussion presented above, taking into consideration the minor incremental contribution of the Proposal to air quality impacts in the surrounding area, no air quality monitoring is required or proposed, for either the construction phase or the operational phase.

9. CONCLUSION

Northstar Air Quality was engaged by ISPT Pty Ltd, to perform an Air Quality Impact Assessment (AQIA) for the construction and operation of seven warehouses, associated offices and hardstand/car parking areas.

The AQIA has been performed to support an SSD application for the development, which is located within the area covered by the requirements of the NSW State Environmental Planning Policy (Western Sydney Employment Area) 2009.

Construction phase activities will involve demolition works and earthworks, construction works and associated vehicle traffic. The associated risks of impacts from demolition, construction, track-out and construction traffic have been assessed using the published guidance in *IAQM Guidance on the Assessment of Dust from Demolition and Construction* developed in the United Kingdom by the Institute of Air Quality Management (IAQM), and adapted by Northstar Air Quality for use in Australia. This methodology has been used in a similar context in numerous other similar AQIA studies.

That assessment showed there to be a high risk of health or nuisance impacts during demolition works and a medium risk of health or nuisance impacts during construction works. However, a range of standard mitigation measures are available to ensure that short-term impacts associated with construction activities are minimised. Furthermore, the assessment has assumed that construction activities across the entire Proposal site would be performed at one time, where in reality the construction activities would be staged.

The prediction of potential impacts associated with operational activities has been performed in general accordance with the requirements of the NSW Approved Methods (NSW EPA 2016), using an approved and appropriate dispersion modelling technique. The estimation of emissions has been performed using referenced emission factors, and this is documented in **Section 5.2.2**.

For the purposes of the assessment, it was conservatively assumed that all loading bays were occupied by idling vehicles for 10 minutes in each hour. The results of the assessment show that the conclusions drawn from this study would not be affected by that assumption, and continuous idling at all bays simultaneously for 60 mins per hour would not materially change the conclusions.

The potential incremental impacts (i.e. without consideration of assumed background air quality conditions) at all the identified receptor locations, are presented in **Section 7** which documents those predictions as:

- **Incremental impact** – relates to the concentrations predicted as a result of the operation of the Proposal in isolation.
- **Cumulative impact** – relates to the concentrations predicted as a result of the operation of the Proposal PLUS the background air quality concentrations discussed in **Section 4.4**.

Conclusion: It is demonstrated that the operation of the Proposal does not cause any exceedances of the air quality criteria.

It is respectfully suggested that the SSD application should not be refused on the grounds of air quality issues.

10. REFERENCES

- ABS. (2017). *Australian Bureau of Statistics*. Retrieved from 3101.0 - Australian Demographic Statistics:
<http://www.abs.gov.au/AUSSTATS/abs@.nsf/DetailsPage/3101.0Jun%202015?OpenDocument>
- Ason Group. (2016). *Proposed Warehouse Development, Lot 4, Oakdale Central, Horsley Park*.
- Ason Group. (2019). *Traffic Impact Assessment, Planning Proposal & State Significant Development Application, Mamre South Precinct - Warehouse & Logistics Hub, 657-703 Mamre Road, Kemps Creek*.
- DEC. (2006). *Approved Methods for the Sampling and Analysis of Air Pollutants in NSW*. NSW Environment Protection Authority.
- NSW DEC. (2006). *Technical Framework: Assessment and Management of Odour from Stationary Sources in NSW*.
- NSW DEC. (2006). *Technical Notes: Assessment and Management of Odour from Stationary Sources in NSW*.
- NSW EPA. (2016). *Approved Methods for the Modelling and Assessment of Air Pollutants in New South Wales*. NSW Environment Protection Authority.
- NSW EPA. (2017). *Approved Methods for the Modelling and Assessment of Air Pollutants in New South Wales*. NSW Environment Protection Authority.
- USEPA. (2008). *Idling Vehicle Emissions for Passenger Cars, Light-Duty Trucks, and Heavy-Duty Trucks*.
- USEPA. (2011). *AP-42 Compilation of Air Pollutant Emission Factors, Chapter 13.2.1 Paved Roads*.

This page is intentionally blank

Appendix A

Meteorology

As discussed in **Section 4.3** a meteorological modelling exercise has been performed to characterise the meteorology of the Proposal site in the absence of site specific measurements. The meteorological monitoring has been based on measurements taken at a number of surrounding automatic weather stations (AWS) operated by the Bureau of Meteorology (BoM). Meteorology is also measured by the NSW Department of Planning, Industry and Environment (DPIE) at a number of Air Quality Monitoring Station (AQMS) surrounding the Proposal site (refer **Section 4.4**).

A summary of the relevant monitoring sites is provided in **Table A1** and also displayed in **Figure A1**.

Table A1 Details of the meteorological monitoring surrounding the Proposal site

Site Name	Source	Approximate Location (UTM)		Approximate Distance
		mE	mS	km
Prospect AQMS	DPI&E	306 744	6 258 645	2.1
Horsley Park Equestrian Centre AWS – Station # 67119	BoM	301 710	6 252 290	7.9
Sydney Olympic Park AWS – Station # 66212	BoM	321 583	6 245 405	13.5
Bankstown Airport AWS – Station # 66137	BoM	314 217	6 244 523	13.6
Liverpool AQMS	DPIE	306 439	6 243 322	13.7
Chullora	DPIE	319 177	6 247 940	14.3.
St Marys AQMS	DPIE	293 170	6 258 083	14.8

Figure A1 Meteorological and air quality monitoring surrounding the Proposal site

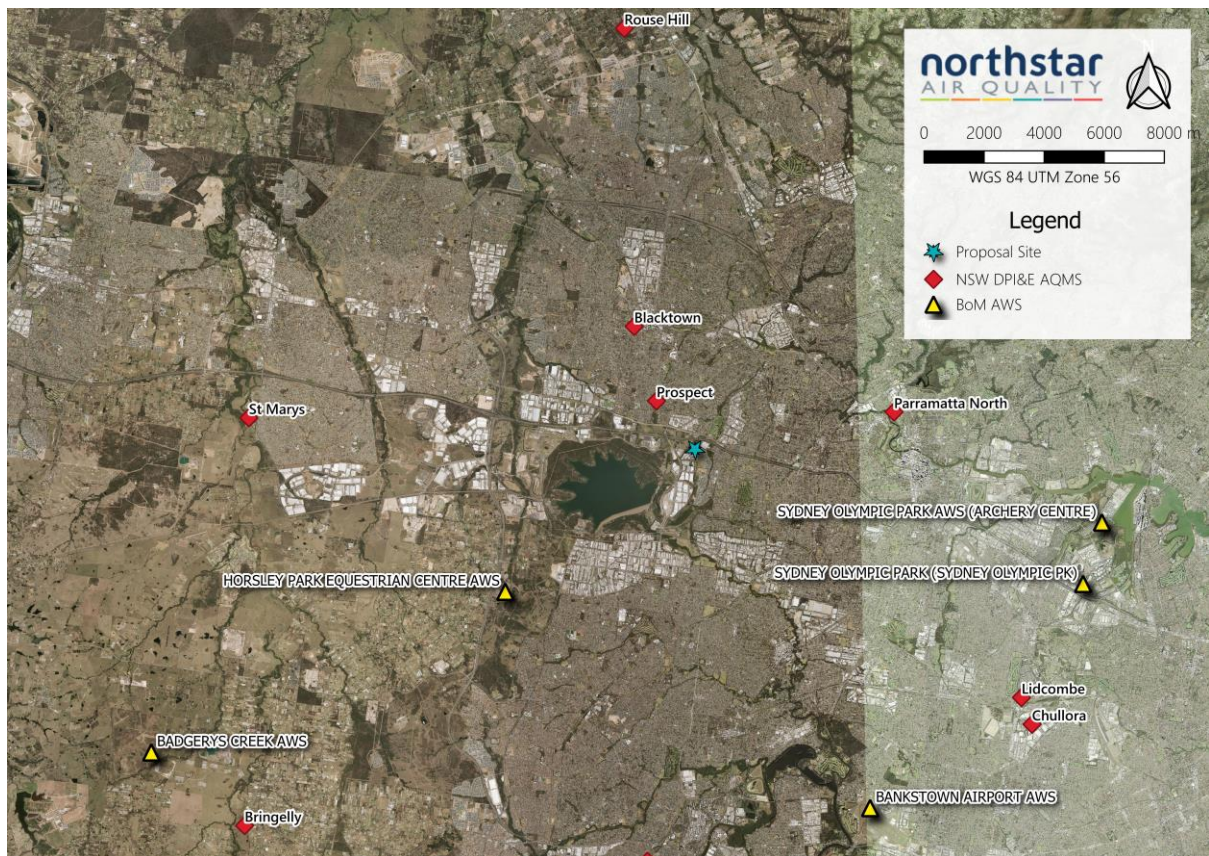
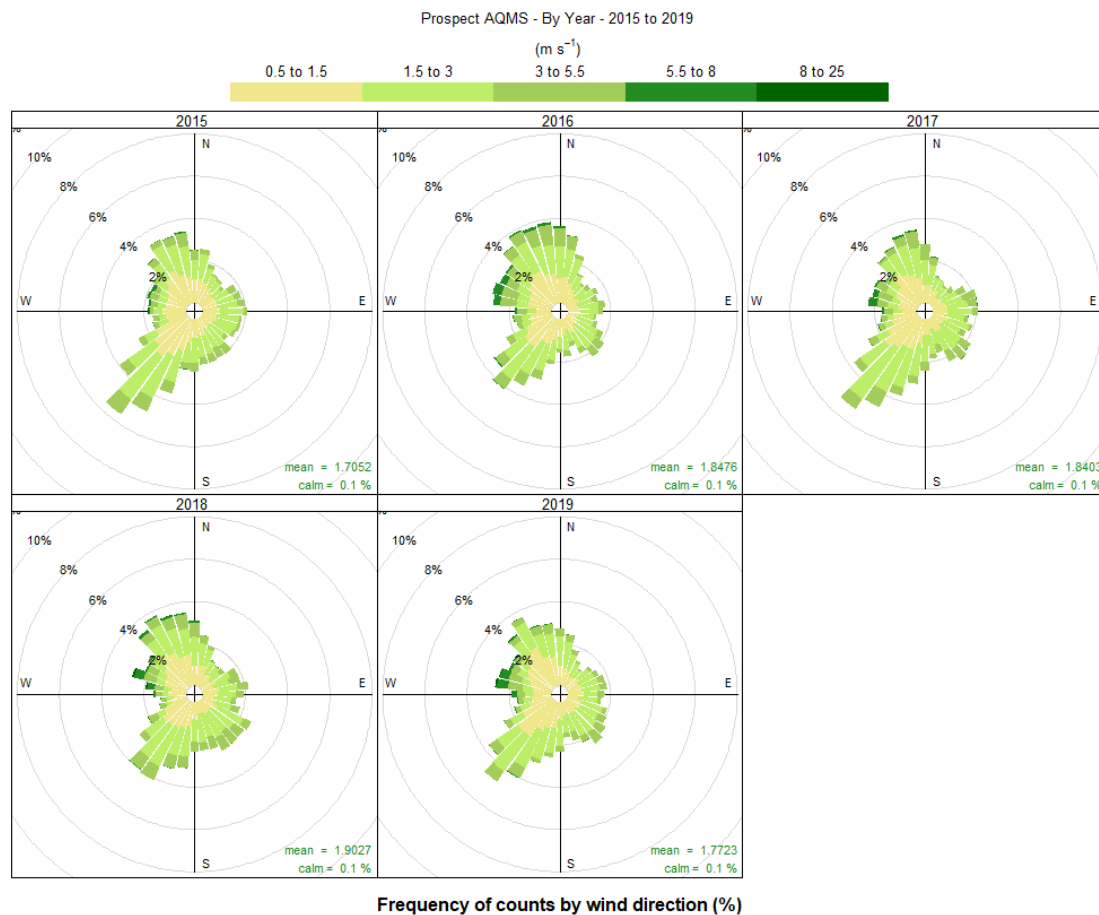


Image courtesy of Google Earth

Meteorological conditions at Prospect AQMS was chosen for further investigation due to its location relative to the Proposal site. This site has been examined to determine a 'typical' or representative dataset for use in dispersion modelling. Annual wind roses for the most recent 5 years of data (2015 to 2019) are presented in **Figure A2**.

Figure A2 Annual wind roses 2015 to 2019, Prospect AQMS



The wind roses indicate that from 2015 to 2019, winds at Prospect AQMS show similar patterns across the years, with a predominant south-easterly wind direction.

The majority of wind speeds experienced at Prospect AQMS over the 5-year period, 2015 to 2019 are generally in the range <0.5 metres per second (m·s⁻¹) to 5.5 m·s⁻¹ with the highest wind speeds (greater than 8 m·s⁻¹) occurring from a north westerly direction. Winds of this speed are not frequent, occurring <0.1% of the observed hours over the 5-year period, at Prospect. Calm winds (<0.5 m·s⁻¹) occur during 0.1 % of hours on average across the 5-year period.

Given the wind distributions across the years examined, data for the year 2018 has been selected as being appropriate for further assessment, as it best represents the general trend across the 5-year period studied.

Presented in **Figure A3** are the annual wind rose for the 2015 to 2019 period and the year 2018 and in **Figure A4** the annual wind speed distribution for Prospect AQMS. These figures indicate that the distribution of wind speed and direction in 2018 is very similar to that experienced across the longer-term period.

It is concluded that conditions in 2018 may be considered to provide a suitably representative dataset for use in dispersion modelling.

Figure A3 Annual wind roses 2015 to 2019, and 2018 – Prospect AQMS

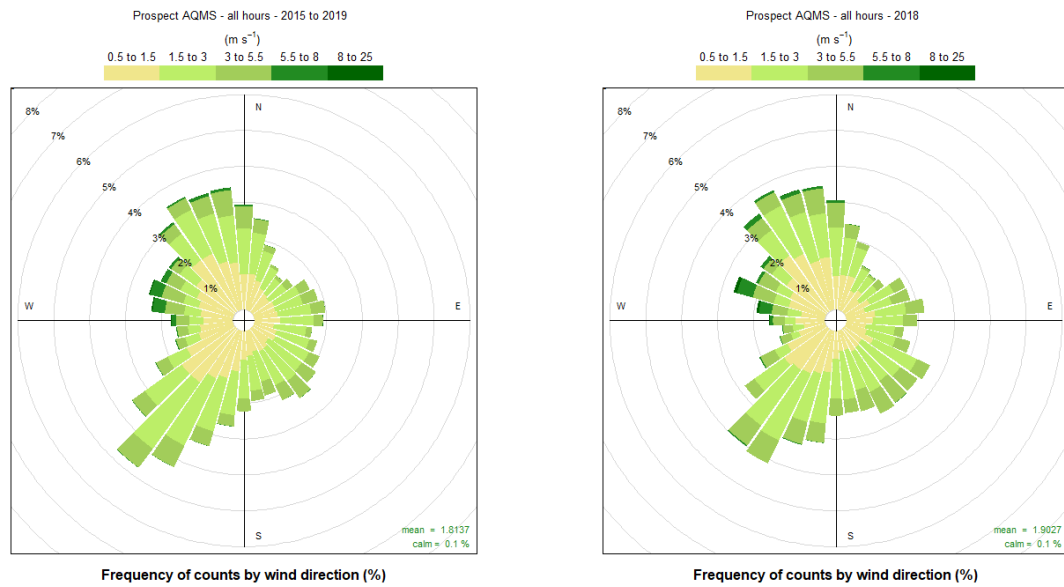
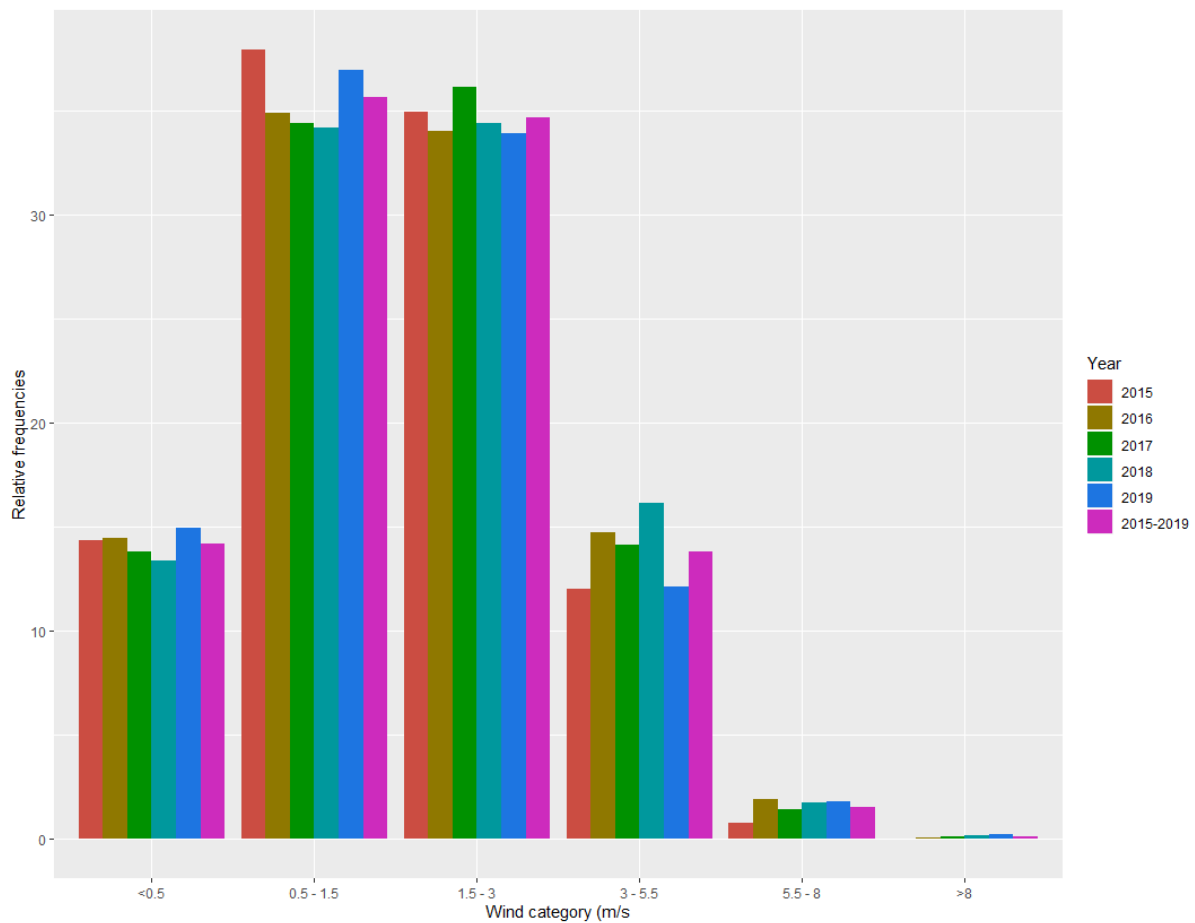


Figure A4 Annual wind speed distribution – Prospect AQMS



Meteorological Processing

The BoM and DPIE data adequately covers the issues of data quality assurance, however it is limited by its location compared to the Proposal site. To address these uncertainties, a multi-phased assessment of the meteorology data has been performed.

In absence of any measured onsite meteorological data, site representative meteorological data for this proposal was generated using the TAPM meteorological model in a format suitable for using in the CALPUFF dispersion model (refer **Section 5.1**).

Meteorological modelling using The Air Pollution Model (TAPM, v 4.0.5) has been performed to predict the meteorological parameters required for CALPUFF. TAPM, developed by the Commonwealth Scientific and Industrial Research Organisation (CSIRO) is a prognostic model which may be used to predict three-dimensional meteorological data and air pollution concentrations.

TAPM predicts wind speed and direction, temperature, pressure, water vapour, cloud, rain water and turbulence. The program allows the user to generate synthetic observations by referencing databases (covering terrain, vegetation and soil type, sea surface temperature and synoptic scale meteorological analyses) which are subsequently used in the model input to generate site-specific hourly meteorological observations at user-defined levels within the atmosphere.

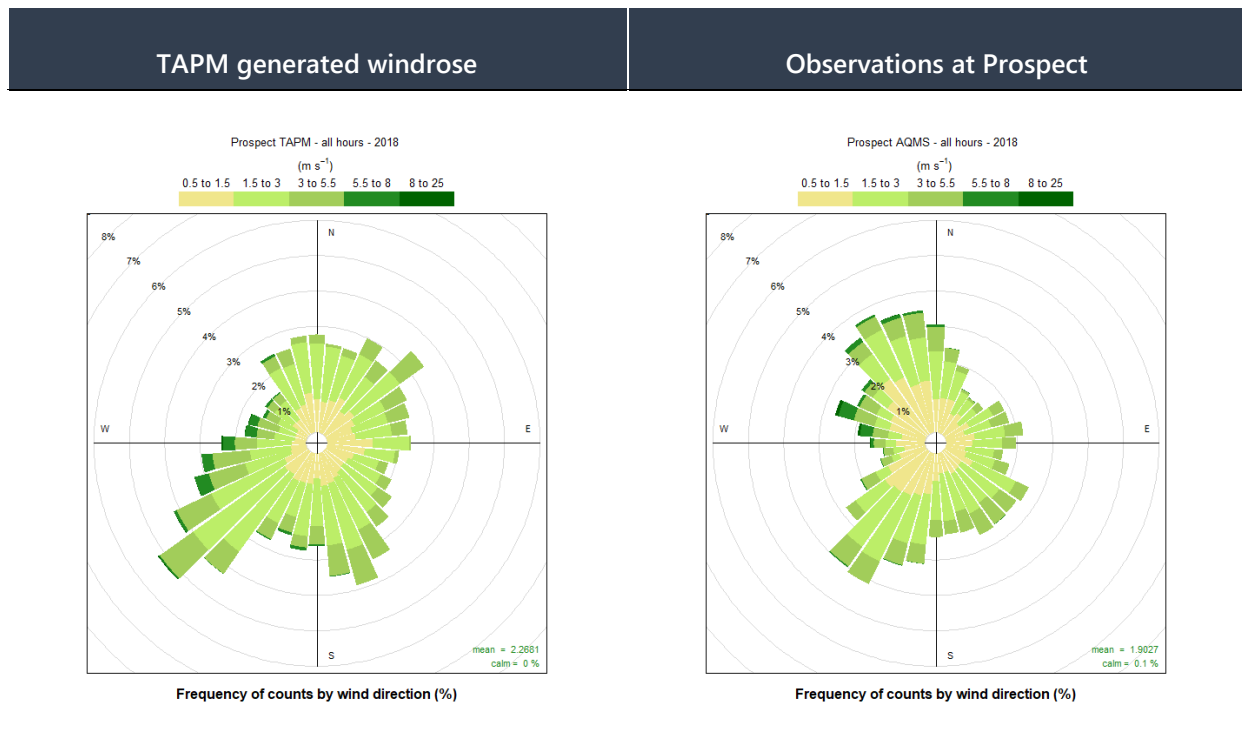
The parameters used in TAPM modelling are presented in **Table A2**.

Table A2 Meteorological parameters used for this study

TAPM v 4.0.5	
Modelling period	1 January 2018 to 31 December 2018
Centre of analysis	307,950 mE, 6,256,235 mN (UTM Coordinates)
Number of grid points	25 × 25 × 25
Number of grids (spacing)	4 (30 km, 10 km, 3 km, 1 km)
Terrain	AUSLIG 9 second DEM
Data assimilation	None

A comparison of the TAPM generated meteorological data, and that observed at the Prospect AQMS, is presented in **Figure A5**. These data generally compare well at both sites, which provides confidence that the meteorological conditions modelled as part of this assessment are appropriate.

Figure A5 Modelled and observed meteorological data – Prospect AQMS 2018



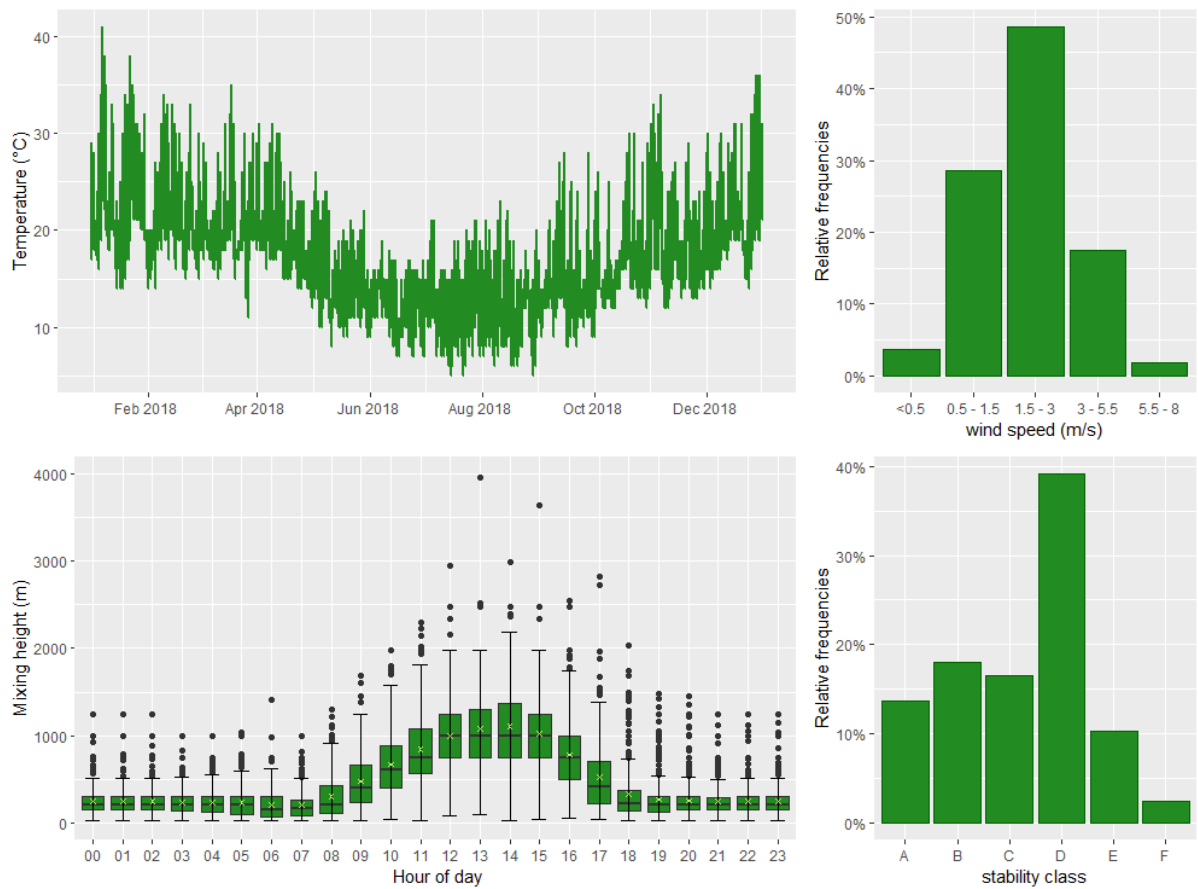
As generally required by the NSW EPA the following provides a summary of the modelled meteorological dataset. Given the nature of the pollutant emission sources at the Proposal site, detailed discussion of the humidity, evaporation, cloud cover, katabatic air drainage and air recirculation potential of the Proposal site has not been provided. Details of the predictions of wind speed and direction, mixing height and temperature at the Proposal site are provided below.

Diurnal variations in maximum and average mixing heights predicted by TAPM at the Proposal site during 2018 period are illustrated in **Figure A6**.

As expected, an increase in mixing height during the morning is apparent, arising due to the onset of vertical mixing following sunrise. Maximum mixing heights occur in the mid to late afternoon, due to the dissipation of ground based temperature inversions and growth of the convective mixing layer.

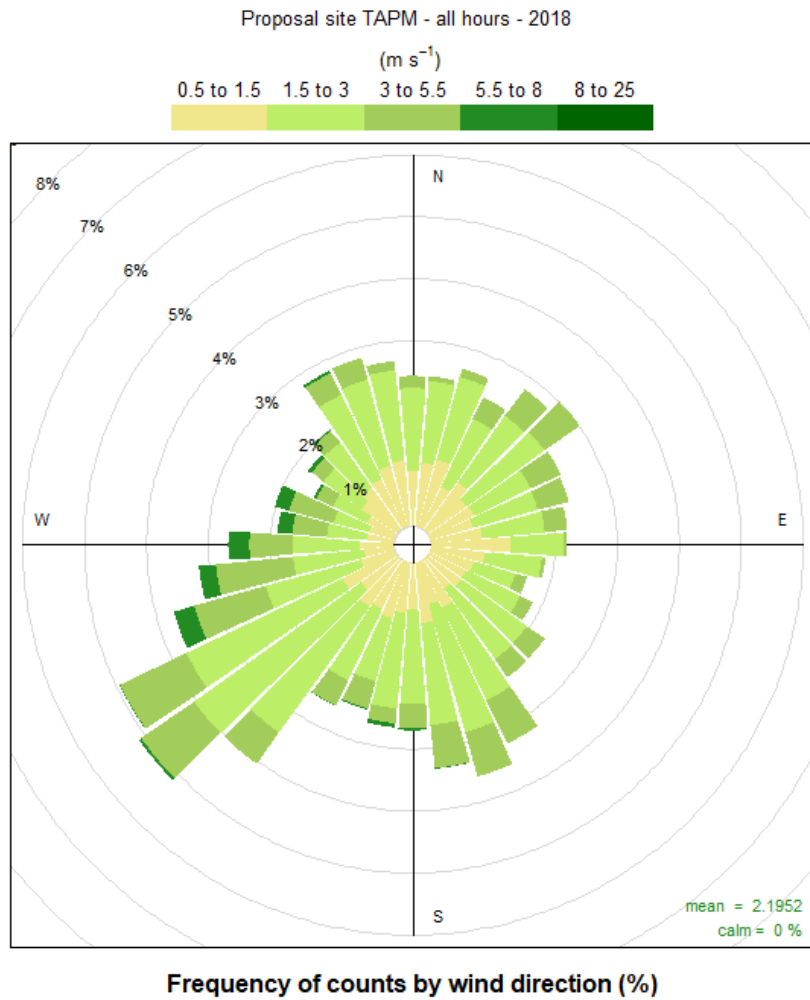
The modelled temperature variations predicted at the Proposal site during 2018 are presented in **Figure A6**.

Figure A6 Predicted temperature and mixing height – Proposal site 2018



The modelled wind speed and direction at the Proposal site during 2018 are presented in **Figure A7**.

Figure A7 Predicted wind speed and direction – Proposal site 2018



Page left intentionally blank

Appendix B

Background Air Quality Data

Air quality is not monitored at the Proposal site and therefore air quality monitoring data measured at a representative location has been adopted for the purposes of this assessment. Determination of data to be used as a location representative of the Proposal site and during a representative year can be complicated by factors which include:

- the sources of air pollutant emissions around the Proposal site and representative AQMS; and
- the variability of particulate matter concentrations (often impacted by natural climate variability).

Air quality monitoring is performed by the NSW Department of Planning, Industry and Environment (DPIE) at four air quality monitoring station (AQMS) within a 17 km radius of the Proposal site. Details of the monitoring performed at these AQMS is presented in **Table B1** and **Figure 7**.

Table B1 Details of Closest AQMS Surrounding the Site

AQMS Location	Data Availability	Distance to Site (km)	Screening Parameters				
			2018 Data	Measurements			
				PM ₁₀	PM _{2.5}	TSP	NO ₂
Prospect	2007 - 2019	2.1	✓	✓	✓	✗	✓
Liverpool	1990 - 2019	13.9	✓	✓	✓	✗	✓
Chullora	1992 - 2019	14.3	✓	✓	✓	✗	✓
St Marys	2002-2019	14.9	✓	✓	✓	✗	✓

Based on the sources of AQMS data available and their proximity to the Proposal site, Prospect was selected as the candidate source of AQMS data for use in this assessment.

Summary statistics are for PM₁₀ and PM_{2.5} data are presented in **Table B2**.

Table B2 PM₁₀ and PM_{2.5} statistics 2018

AQMS	Prospect	
Year	2018	
Pollutant	PM ₁₀	PM _{2.5}
Averaging Period	24-hour	24-hour
Data Points (number)	363.0	352.0
Mean (µg·m ⁻³)	21.9	8.5
Standard Deviation (µg·m ⁻³)	10.9	4.9
Skew ¹	2.7	3.0
Kurtosis ²	15.6	17.7
Minimum (µg·m ⁻³)	5.4	1.1
Percentiles (µg·m ⁻³)		
1	7.1	2.0
5	9.9	3.2
10	11.2	4.1
25	14.8	5.3
50	20.2	7.4
75	25.8	25.8
90	33.3	13.8
95	37.4	37.4
97	42.9	17.8
98	52.8	19.9
99	61.7	25.0
Maximum	113.3	47.5
Data Capture (%)	99.5	96.4

Notes: 1: Skew represents an expression of the distribution of measured values around the derived mean. Positive skew represents a distribution tending towards values higher than the mean, and negative skew represents a distribution tending towards values lower than the mean. Skew is dimensionless.

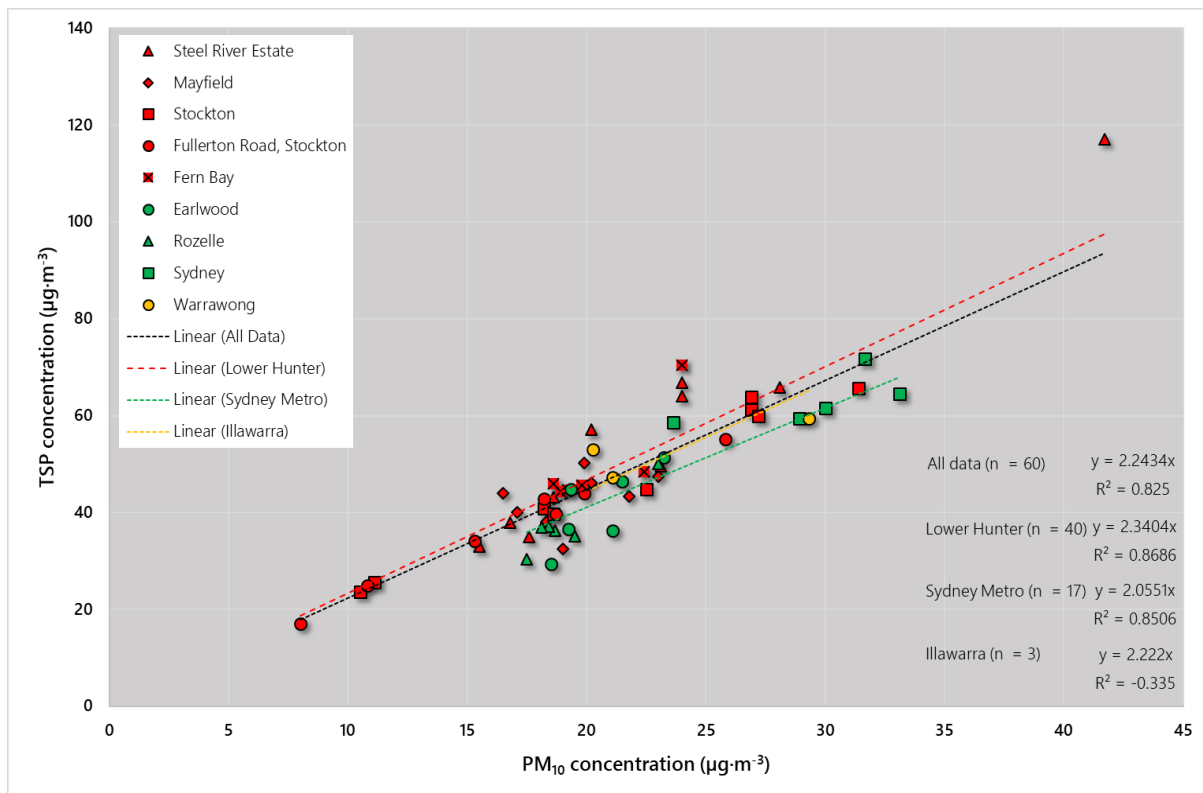
2: Kurtosis represents an expression of the value of measured values in relation to a normal distribution. Positive skew represents a more peaked distribution, and negative skew represents a distribution more flattened than a normal distribution. Kurtosis is dimensionless.

Concentrations of TSP are not measured by the NSW DPIE at any AQMS surrounding the Proposal site. An analysis of co-located measurements of TSP and PM₁₀ in the Lower Hunter (1999 to 2011), Illawarra (2002 to 2004), and Sydney Metropolitan (1999 to 2004) regions is presented in **Figure B1**.

The analysis concludes that, on the basis of the measurements collected across NSW between 1999 to 2011, the derivation of a broad TSP:PM₁₀ ratio of 2.0551 : 1 (i.e. PM₁₀ represents ~48 % of TSP) is appropriate to be applied to measurements in the Sydney Metro.

In the absence of any more specific information, this ratio has been adopted within this AQIA. These estimates have not been adjusted for background exceedances.

Figure B1 Co-located TSP and PM₁₀ Measurements, Lower Hunter, Sydney Metro and Illawarra



Similarly, no dust deposition data is available for the area surrounding the Proposal site. The incremental impact criterion of $2 \text{ g} \cdot \text{m}^{-2} \cdot \text{month}^{-1}$ as outlined within the Approved Methods has been adopted which effectively provides a background deposition level of $2 \text{ g} \cdot \text{m}^{-2} \cdot \text{month}^{-1}$ (the total allowable deposition being $4 \text{ g} \cdot \text{m}^{-2} \cdot \text{month}^{-1}$).

A summary of background air quality data for the site for the year 2018 (consistent with the selected meteorological period) is presented in **Table B3**.

Graphs presenting the daily varying PM₁₀ and PM_{2.5} data recorded at Prospect in 2018 are presented in **Figure B2** and **Figure B3**, respectively.

Table B3 Summary of Background Air Quality Data (Prospect 2018)

Pollutant	TSP ($\mu\text{g}\cdot\text{m}^{-3}$)	PM ₁₀ ($\mu\text{g}\cdot\text{m}^{-3}$)	PM _{2.5} ($\mu\text{g}\cdot\text{m}^{-3}$)	NO ₂ ($\mu\text{g}\cdot\text{m}^{-3}$)
Averaging Period	Annual	24-Hour	24-Hour	1-Hour
Data Points (number)	363.0	363.0	352.0	7583.0
Mean	43.9	21.9	8.5	18.7
Standard Deviation	-	10.9	4.9	17.0
Skew ¹	-	2.7	3.0	1.2
Kurtosis ²	-	15.6	17.7	1.0
Minimum		5.4	1.1	-4.1
Percentiles ($\mu\text{g}\cdot\text{m}^{-3}$)				
1	-	7.1	2.0	0.0
5	-	9.9	3.2	0.0
10	-	11.2	4.1	2.1
25	-	14.8	5.3	6.2
50	-	20.2	7.4	12.3
75	-	25.8	25.8	28.7
90	-	33.3	13.8	43.1
95	-	37.4	37.4	53.3
97	-	42.9	17.8	59.5
98	-	52.8	19.9	64.5
99	-	61.7	25.0	69.7
Maximum	227.2	113.3	47.5	104.6
Data Capture (%)	99.5	99.5	96.4	86.6

Figure B2 PM₁₀ Measurements, Prospect 2018

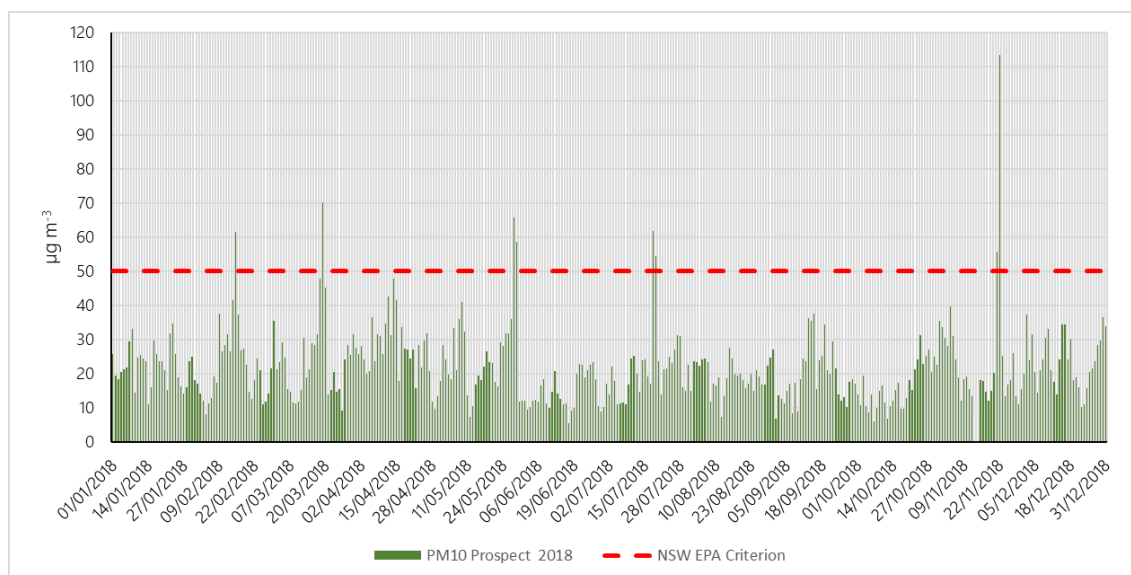
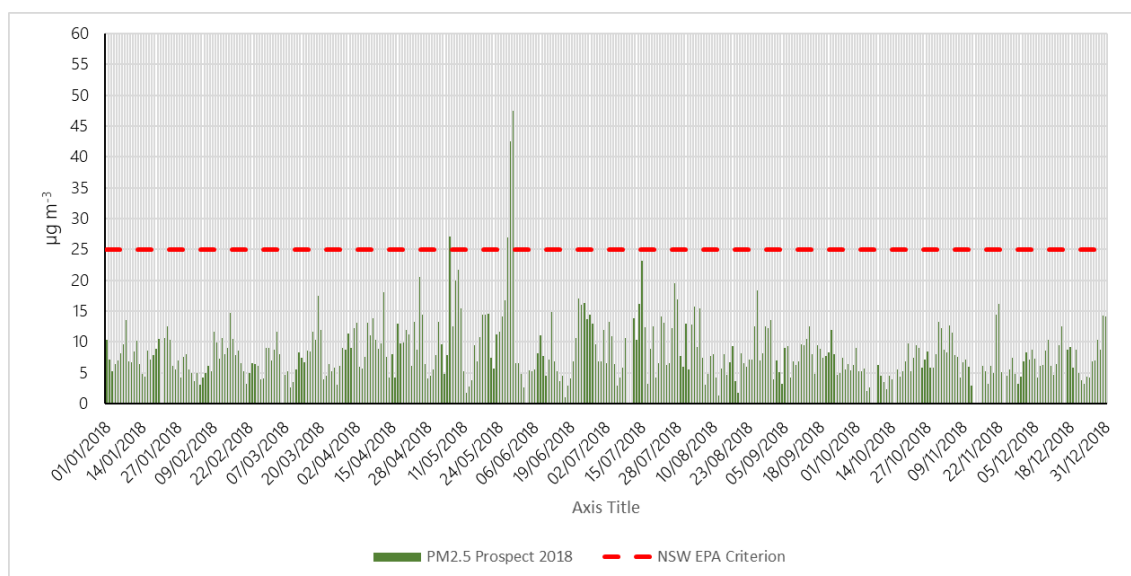


Figure B3 PM_{2.5} Measurements, Prospect 2018



Appendix C

Construction Phase Risk Assessment Methodology

Provided below is a summary of the risk assessment methodology used in this assessment. It is based upon IAQM (2016) *Guidance on the assessment of dust from demolition and construction* (version 1.1), and adapted by Northstar Air Quality.

Adaptions to the Published Methodology Made by Northstar Air Quality

The adaptations made by Northstar Air Quality from the IAQM published methodology are:

- **PM₁₀ criterion:** an amended criterion representing the annual average PM₁₀ criterion relevant to Australia rather than the UK;
- **Nomenclature:** a change in nomenclature from “receptor sensitivity” to “land use value” to avoid misinterpretation of values attributed to “receptor sensitivity” and “sensitivity of the area” which may be assessed as having different values;
- **Construction traffic:** the separation of construction vehicle movements as a discrete risk assessment profile from those associated with the ‘on-site’ activities of demolition, earthworks and construction. The IAQM methodology considers four risk profiles of: “demolition”, “earthworks”, “construction” and “trackout”. The adaptation by Northstar Air Quality introduces a fifth risk assessment profile of “construction traffic” to the existing four risk profiles; and,
- **Tables:** minor adjustments in the visualisation of some tables.

Step 1 – Screening Based on Separation Distance

The Step 1 screening criteria provided by the IAQM guidance suggests screening out any assessment of impacts from construction activities where sensitive receptors are located:

- more than 350 m from the boundary of the site;
- more than 50 m from the route used by construction vehicles on public roads; and,
- more than 500 m from the site entrance.

This step is noted as having deliberately been chosen to be conservative and would require assessments for most developments.

Step 2 – Risk from Construction Activities

Step 2 of the assessment provides “dust emissions magnitudes” for each of the dust generating activities; demolition, earthworks, construction, and track-out (the movement of site material onto public roads by vehicles) and construction traffic.

The magnitudes are: Large; Medium; or Small, with suggested definitions for each category as follows:

Dust Emission Magnitude Activities

Activity	Large	Medium	Small
Demolition			
- total building volume*	• >50 000 m ³	• 20 000 m ³ to 50 000 m ³	• <20 000 m ³
- demolition height	• > 20m AGL	• 10 m and 20 m AGL	• <10 m AGL
- onsite crushing	• yes	• no	• no
- onsite screening	• yes	• no	• no
- demolition of materials with high dust potential	• yes	• yes	• no
- demolition timing	• any time of the year	• any time of the year	• wet months only
Earthworks			
- total area	• >10 000 m ²	• 2 500 m ² to 10 000 m ²	• <2 500 m ²
- soil types	• potentially dusty soil type (e.g. clay which would be prone to suspension when dry due to small particle size)	• moderately dusty soil type (e.g. silt)	• soil type with large grain size (e.g. sand)
- heavy earth moving vehicles	• >10 heavy earth moving vehicles active at any time	• 5 to 10 heavy earth moving vehicles active at any one time	• <5 heavy earth moving vehicles active at any one time
- formation of bunds	• >8m AGL	• 4m to 8m AGL	• <4m AGL
- material moved	• >100 000 t	• 20 000 t to 100 000 t	• <20 000 t
- earthworks timing	• any time of the year	• any time of the year	• wet months only
Construction			
- total building volume	• 100 000 m ³	• 25 000 m ³ to 100 000 m ³	• <25 000 m ³
- piling	• yes	• yes	• no
- concrete batching	• yes	• yes	• no
- sandblasting	• yes	• no	• no
- materials	• concrete	• concrete	• metal cladding or timber
Trackout (within 100 m of construction site entrance)			
- outward heavy vehicles movements per day	• >50	• 10 to 50	• <10
- surface materials	• high potential	• moderate potential	• low potential
- unpaved road length	• >100m	• 50m to 100m	• <50m

Activity	Large	Medium	Small
Construction Traffic (from construction site entrance to construction vehicle origin)			
Demolition traffic - total building volume	<ul style="list-style-type: none"> >50 000 m³ 	<ul style="list-style-type: none"> 20 000 m³ to 50 000 m³ 	<ul style="list-style-type: none"> <10 000 m³
Earthworks traffic - total area	<ul style="list-style-type: none"> >10 000 m² 	<ul style="list-style-type: none"> 2 500 m² to 10 000 m² 	<ul style="list-style-type: none"> <2 500 m²
Earthworks traffic - soil types	<ul style="list-style-type: none"> potentially dusty soil type (e.g. clay which would be prone to suspension when dry due to small particle size) 	<ul style="list-style-type: none"> moderately dusty soil type (e.g. silt) 	<ul style="list-style-type: none"> soil type with large grain size (e.g. sand)
Earthworks traffic - material moved	<ul style="list-style-type: none"> >100 000 t 	<ul style="list-style-type: none"> 20 000 t to 100 000 t 	<ul style="list-style-type: none"> <20 000 t
Construction traffic - total building volume	<ul style="list-style-type: none"> 100 000 m³ 	<ul style="list-style-type: none"> 25 000 m³ to 100 000 m³ 	<ul style="list-style-type: none"> <25 000 m³
Total traffic - heavy vehicles movements per day when compared to existing heavy vehicle traffic	<ul style="list-style-type: none"> >50% of heavy vehicle movement contribution by Proposal 	<ul style="list-style-type: none"> 10% to 50% of heavy vehicle movement contribution by Proposal 	<ul style="list-style-type: none"> <10% of heavy vehicle movement contribution by Proposal

Step 3 – Sensitivity of the Area

Step 3 of the assessment process requires the sensitivity of the area to be defined. The sensitivity of the area takes into account:

- The specific sensitivities that identified land use values have to dust deposition and human health impacts;
- The proximity and number of those receptors locations;
- In the case of PM_{10} , the local background concentration; and
- Other site-specific factors, such as whether there are natural shelters such as trees to reduce the risk of wind-blown dust.

Land Use Value

Individual receptor locations may be attributed different land use values based on the land use of the land, and may be classified as having high, medium or low values relative to dust deposition and human health impacts (ecological receptors are not addressed using this approach).

Essentially, land use value is a metric of the level of amenity expectations for that land use.

The IAQM method provides guidance on the land use value with regard to dust soiling and health effects and is shown in the table below. It is noted that user expectations of amenity levels (dust soiling) is dependent on existing deposition levels.

IAQM Guidance for Categorising Land Use Value

Value	High Land Use Value	Medium Land Use Value	Low Land Use Value
Health effects	<ul style="list-style-type: none"> • Locations where the public are exposed over a time period relevant to the air quality objective for PM_{10} (in the case of the 24-hour objectives, a relevant location would be one where individuals may be exposed for eight hours or more in a day). <p><i>Examples: Residential properties, hospitals, schools and residential care homes.</i></p>	<ul style="list-style-type: none"> • Locations where the people exposed are workers, and exposure is over a time period relevant to the air quality objective for PM_{10} (in the case of the 24-hour objectives, a relevant location would be one where individuals may be exposed for eight hours or more in a day). <p><i>Examples: Office and shop workers, but would generally not include workers occupationally exposed to PM_{10}.</i></p>	<ul style="list-style-type: none"> • Locations where human exposure is transient. <p><i>Examples: Public footpaths, playing fields, parks and shopping street.</i></p>

Value	High Land Use Value	Medium Land Use Value	Low Land Use Value
Dust soiling	<ul style="list-style-type: none"> Users can reasonably expect a high level of amenity; or The appearance, aesthetics or value of their property would be diminished by soiling, and the people or property would reasonably be expected to be present continuously, or at least regularly for extended periods as part of the normal pattern of use of the land. <p><i>Examples: Dwellings, museums, medium and long term car parks and car showrooms.</i></p>	<ul style="list-style-type: none"> Users would expect to enjoy a reasonable level of amenity, but would not reasonably expect to enjoy the same level of amenity as in their home; or The appearance, aesthetics or value of their property could be diminished by soiling; or The people or property wouldn't reasonably be expected to be present here continuously or regularly for extended periods as part of the normal pattern of use of the land. <p><i>Examples: Parks and places of work.</i></p>	<ul style="list-style-type: none"> The enjoyment of amenity would not reasonably be expected; or Property would not reasonably be expected to be diminished in appearance, aesthetics or value by soiling; or There is transient exposure, where the people or property would reasonably be expected to be present only for limited periods of time as part of the normal pattern of use of the land. <p><i>Examples: Playing fields, farmland (unless commercially-sensitive horticultural), footpaths, short term car parks and roads.</i></p>

Sensitivity of the Area

The assessed land use value (as described above) is then used to assess the *sensitivity of the area* surrounding the active construction area, taking into account the proximity and number of those receptors, and the local background PM₁₀ concentration (in the case of potential health impacts) and other site-specific factors.

Additional factors to consider when determining the sensitivity of the area include:

- any history of dust generating activities in the area;
- the likelihood of concurrent dust generating activity on nearby sites;
- any pre-existing screening between the source and the receptors;
- any conclusions drawn from analysing local meteorological data which accurately represent the area; and if relevant, the season during which the works would take place;
- any conclusions drawn from local topography;
- duration of the potential impact, as a receptor may become more sensitive over time; and
- any known specific receptor sensitivities which go beyond the classifications given in the IAQM document.

Sensitivity of the Area - Health Impacts

For high land use values, the method takes the existing background concentrations of PM₁₀ (as an annual average) experienced in the area of interest into account, and professional judgement may be used to determine alternative sensitivity categories, taking into account the following:

- any history of dust generating activities in the area;
- the likelihood of concurrent dust generating activity on nearby sites;
- any pre-existing screening between the source and the receptors;
- any conclusions drawn from analysing local / seasonal meteorological data;
- any conclusions drawn from local topography;
- duration of the potential impact, as a receptor may become more sensitive over time; and
- any known specific receptor sensitivities which go beyond the classifications given in the IAQM document.

IAQM Guidance for Categorising the Sensitivity of an Area to Dust Health Effects

Land Use Value	Annual Mean PM ₁₀ Concentration (µg·m ⁻³)	Number of Receptors ^(a)	Distance from the Source (m) ^(b)				
			<20	<50	<100	<200	<350
High	>30	>100	High	High	High	Medium	Low
		10-100	High	High	Medium	Low	Low
		1-10	High	Medium	Low	Low	Low
	26 – 30	>100	High	High	Medium	Low	Low
		10-100	High	Medium	Low	Low	Low
		1-10	High	Medium	Low	Low	Low
	22 – 26	>100	High	Medium	Low	Low	Low
		10-100	High	Medium	Low	Low	Low
		1-10	Medium	Low	Low	Low	Low
	≤22	>100	Medium	Low	Low	Low	Low
		10-100	Low	Low	Low	Low	Low
		1-10	Low	Low	Low	Low	Low
Medium	-	>10	High	Medium	Low	Low	Low
	-	1-10	Medium	Low	Low	Low	Low
Low	-	>1	Low	Low	Low	Low	Low

Note: (a) Estimate the total within the stated distance (e.g. the total within 350 m and not the number between 200 and 350 m), noting that only the highest level of area sensitivity from the table needs to be considered. In the case of high sensitivity areas with high occupancy (such as schools or hospitals) approximate the number of people likely to be present. In the case of residential dwellings, just include the number of properties.

(b) With regard to potential 'construction traffic' impacts, the distance criteria of <20m and <50m from the source (roadside) are used (i.e. the first two columns only). Any locations beyond 50m may be screened out of the assessment (as per Step 1) and the corresponding sensitivity is negligible'.

Sensitivity of the Area - Dust Soiling

The IAQM guidance for assessing the sensitivity of an area to dust soiling is shown in the table below

IAQM Guidance for Categorising the Sensitivity of an Area to Dust Soiling Effects

Land Use Values	Number of receptors ^(a)	Distance from the source (m) ^(b)			
		<20	<50	<100	<350
High	>100	High	High	Medium	Low
	10-100	High	Medium	Low	Low
	1-10	Medium	Low	Low	Low
Medium	>1	Medium	Low	Low	Low
Low	>1	Low	Low	Low	Low

Note: (a) Estimate the total number of receptors within the stated distance. Only the highest level of area sensitivity from the table needs to be considered.

(b) With regard to potential 'construction traffic' impacts, the distance criteria of <20m and <50m from the source (roadside) are used (i.e. the first two columns only). Any locations beyond 50m may be screened out of the assessment (as per Step 1) and the corresponding sensitivity is negligible'.

Step 4 - Risk Assessment (Pre-Mitigation)

The matrices shown for each activity determine the risk category with no mitigation applied.

Risk of dust impacts from earthworks

Sensitivity of Area	Pre-Mitigated Dust Emission Magnitude (Earthworks)		
	Large	Medium	Small
High	High Risk	Medium Risk	Low Risk
Medium	Medium Risk	Medium Risk	Low Risk
Low	Low Risk	Low Risk	Negligible

Risk of dust impacts from construction activities

Sensitivity of Area	Pre-Mitigated Dust Emission Magnitude (Construction)		
	Large	Medium	Small
High	High Risk	Medium Risk	Low Risk
Medium	Medium Risk	Medium Risk	Low Risk
Low	Low Risk	Low Risk	Negligible

Risk of dust impacts from demolition activities

Sensitivity of Area	Pre-Mitigated Dust Emission Magnitude (Demolition)		
	Large	Medium	Small
High	High Risk	Medium Risk	Medium Risk
Medium	High Risk	Medium Risk	Low Risk
Low	Medium Risk	Low Risk	Negligible

Risk of dust impacts from trackout (within 100m of construction site entrance)

Sensitivity of Area	Pre-Mitigated Dust Emission Magnitude (Trackout)		
	Large	Medium	Small
High	High Risk	Medium Risk	Low Risk
Medium	Medium Risk	Low Risk	Negligible
Low	Low Risk	Low Risk	Negligible

Risk of dust impacts from construction traffic (from construction site entrance to origin)

Sensitivity of Area	Pre-Mitigated Dust Emission Magnitude (Construction Traffic)		
	Large	Medium	Small
High	High Risk	Medium Risk	Low Risk
Medium	Medium Risk	Low Risk	Negligible
Low	Low Risk	Low Risk	Negligible

Step 5 – Identify Mitigation

Once the risk categories are determined for each of the relevant activities, site-specific management measures can be identified based on whether the site is a low, medium or high risk site.

The identified mitigation measures are presented as follows:

- **N** = not required (although they may be implemented voluntarily)
- **D** = desirable (to be considered as part of the CEMP, but may be discounted if justification is provided);
- **H** = highly recommended (to be implemented as part of the CEMP, and should only be discounted if site-specific conditions render the requirement invalid or otherwise undesirable).

The table below presents the complete mitigation table, not that assessed as required for any specific project or activity:

Identified Mitigation		Unmitigated Risk		
		Low	Medium	High
1 Communications				
1.1	Develop and implement a stakeholder communications plan that includes community engagement before work commences on site.	N	H	H
1.1	Display the name and contact details of person(s) accountable for air quality and dust issues on the site boundary. This may be the environment manager/engineer or the site manager.	H	H	H
1.2	Display the head or regional office contact information.	H	H	H
1.3	Develop and implement a Dust Management Plan (DMP), which may include measures to control other emissions, approved by the relevant regulatory bodies.	D	H	H
2 Site Management				
2.1	Record all dust and air quality complaints, identify cause(s), take appropriate measures to reduce emissions in a timely manner, and record the measures taken.	H	H	H
2.2	Make the complaints log available to the local authority when asked.	H	H	H
2.3	Record any exceptional incidents that cause dust and/or air emissions, either on- or offsite, and the action taken to resolve the situation in the log book.	H	H	H
2.4	Hold regular liaison meetings with other high-risk construction sites within 500 m of the site boundary, to ensure plans are coordinated and dust and particulate matter emissions are minimised. It is important to understand the interactions of the off-site transport/ deliveries which might be using the same strategic road network routes.	N	N	H

Identified Mitigation		Unmitigated Risk		
		Low	Medium	High
3 Monitoring				
3.1	Undertake daily on-site and off-site inspections where receptors (including roads) are nearby, to monitor dust, record inspection results, and make the log available to the local authority when asked. This should include regular dust soiling checks of surfaces such as street furniture, cars and window sills within 100m of site boundary.	D	D	H
3.2	Carry out regular site inspections to monitor compliance with the dust management plan / CEMP, record inspection results, and make an inspection log available to the local authority when asked.	H	H	H
3.3	Increase the frequency of site inspections by the person accountable for air quality and dust issues on site when activities with a high potential to produce dust are being carried out and during prolonged dry or windy conditions.	H	H	H
3.4	Agree dust deposition, dust flux, or real-time continuous monitoring locations with the relevant regulatory bodies. Where possible commence baseline monitoring at least three months before work commences on site or, if it a large site, before work on a phase commences.	N	H	H
4 Preparing and Maintaining the Site				
4.1	Plan site layout so that machinery and dust causing activities are located away from receptors, as far as is possible.	H	H	H
4.2	Erect solid screens or barriers around dusty activities or the site boundary that they are at least as high as any stockpiles on site.	H	H	H
4.3	Fully enclose site or specific operations where there is a high potential for dust production and the site is active for an extensive period.	D	H	H
4.4	Avoid site runoff of water or mud.	H	H	H
4.5	Keep site fencing, barriers and scaffolding clean using wet methods.	D	H	H
4.6	Remove materials that have a potential to produce dust from site as soon as possible, unless being re-used on site. If they are being re-used on-site cover as described below	D	H	H
4.7	Cover, seed or fence stockpiles to prevent wind erosion	D	H	H
5 Operating Vehicle/Machinery and Sustainable Travel				
5.1	Ensure all on-road vehicles comply with relevant vehicle emission standards, where applicable	H	H	H
5.2	Ensure all vehicles switch off engines when stationary - no idling vehicles	H	H	H
5.3	Avoid the use of diesel or petrol-powered generators and use mains electricity or battery powered equipment where practicable	H	H	H

Identified Mitigation		Unmitigated Risk		
		Low	Medium	High
5.4	Impose and signpost a maximum-speed-limit of 25 km·h ⁻¹ on surfaced and 15 km·h ⁻¹ on unsurfaced haul roads and work areas (if long haul routes are required these speeds may be increased with suitable additional control measures provided, subject to the approval of the nominated undertaker and with the agreement of the local authority, where appropriate	D	D	H
5.4	Produce a Construction Logistics Plan to manage the sustainable delivery of goods and materials.	N	H	H
5.5	Implement a Travel Plan that supports and encourages sustainable travel (public transport, cycling, walking, and car-sharing)	N	D	H
6 Operations				
6.1	Only use cutting, grinding or sawing equipment fitted or in conjunction with suitable dust suppression techniques such as water sprays or local extraction, e.g. suitable local exhaust ventilation systems	H	H	H
6.2	Ensure an adequate water supply on the site for effective dust/particulate matter suppression/ mitigation, using non-potable water where possible and appropriate	H	H	H
6.3	Use enclosed chutes and conveyors and covered skips	H	H	H
6.4	Minimise drop heights from conveyors, loading shovels, hoppers and other loading or handling equipment and use fine water sprays on such equipment wherever appropriate	H	H	H
6.5	Ensure equipment is readily available on site to clean any dry spillages, and clean up spillages as soon as reasonably practicable after the event using wet cleaning methods.	D	H	H
7 Waste Management				
7.1	Avoid bonfires and burning of waste materials.	H	H	H
8 Measures Specific to Demolition				
8.1	Soft strip inside buildings before demolition (retaining walls and windows in the rest of the building where possible, to provide a screen against dust).	D	D	H
8.2	Ensure effective water suppression is used during demolition operations. Hand held sprays are more effective than hoses attached to equipment as the water can be directed to where it is needed. In addition, high volume water suppression systems, manually controlled, can produce fine water droplets that effectively bring the dust particles to the ground.	H	H	H
8.3	Avoid explosive blasting, using appropriate manual or mechanical alternatives.	H	H	H
8.4	Bag and remove any biological debris or damp down such material before demolition.	H	H	H

Identified Mitigation		Unmitigated Risk		
		Low	Medium	High
8.5	Re-vegetate earthworks and exposed areas/soil stockpiles to stabilise surfaces as soon as practicable.	N	D	H
8.6	Use Hessian, mulches or trackifiers where it is not possible to re-vegetate or cover with topsoil, as soon as practicable.	N	D	H
8.7	Only remove the cover in small areas during work and not all at once	N	D	H
9 Measures Specific to Construction				
8.1	Avoid scabbling (roughening of concrete surfaces) if possible	D	D	H
8.2	Ensure sand and other aggregates are stored in bunded areas and are not allowed to dry out, unless this is required for a particular process, in which case ensure that appropriate additional control measures are in place	D	H	H
8.3	Ensure bulk cement and other fine powder materials are delivered in enclosed tankers and stored in silos with suitable emission control systems to prevent escape of material and overfilling during delivery.	N	D	H
8.4	For smaller supplies of fine power materials ensure bags are sealed after use and stored appropriately to prevent dust	N	D	D
10 Measures Specific to Track-Out				
10.1	Use water-assisted dust sweeper(s) on the access and local roads to remove, as necessary, any material tracked out of the site.	D	H	H
10.2	Avoid dry sweeping of large areas.	D	H	H
10.3	Ensure vehicles entering and leaving sites are covered to prevent escape of materials during transport.	D	H	H
10.4	Inspect on-site haul routes for integrity and instigate necessary repairs to the surface as soon as reasonably practicable.	H	H	H
10.5	Record all inspections of haul routes and any subsequent action in a site log book.	D	H	H
10.6	Install hard surfaced haul routes, which are regularly damped down with fixed or mobile sprinkler systems, or mobile water bowzers and regularly cleaned.	N	H	H
10.7	Implement a wheel washing system (with rumble grids to dislodge accumulated dust and mud prior to leaving the site where reasonably practicable).	D	H	H
10.8	Ensure there is an adequate area of hard surfaced road between the wheel wash facility and the site exit, wherever site size and layout permits.	N	H	H
10.9	Access gates to be located at least 10 m from receptors where possible.	N	H	H
11 Specific Measures to Construction Traffic (adapted)				
5.1	Ensure all on-road vehicles comply with relevant vehicle emission standards, where applicable	H	H	H

Identified Mitigation		Unmitigated Risk		
		Low	Medium	High
8.3	Ensure bulk cement and other fine powder materials are delivered in enclosed tankers and stored in silos with suitable emission control systems to prevent escape of material and overfilling during delivery.	N	D	H
10.3	Ensure vehicles entering and leaving sites are covered to prevent escape of materials during transport.	D	H	H
10.4	Inspect on-site haul routes for integrity and instigate necessary repairs to the surface as soon as reasonably practicable.	H	H	H
10.5	Record all inspections of haul routes and any subsequent action in a site log book.	D	H	H

Step 6 – Risk Assessment (post-mitigation)

Following Step 5, the residual impact is then determined.

The objective of the mitigation is to manage the construction phase risks to an acceptable level, and therefore it is assumed that application of the identified mitigation would result in a *low* or *negligible* residual risk (post mitigation).