



Figure 5. Native vegetation extent within the subject land



Figure 6. Plant community types within the subject land



Figure 7. Threatened ecological communities within the subject land



Legend

Subject Land

Study Area

Management Zone

Cleared

Asset Protection Zone

Vegetation Zone

Zone 1: PCT 1081 - Planted

Zone 2: PCT 1395 - Remnant

Zone 3: PCT 849 - Patch_A

Zone 4: PCT 849 - Patch_B

Exotic Vegetation

Cleared Land

Image Source:
Image © NearMap 2019
Dated: 17/12/2019

Data Source:
NSW Government Spatial Services
SIX Maps 'Clip and Ship'
Hawkesbury LGA

Coordinate System: MGA Zone 56 (GDA 94)



Figure 8. Vegetation zones within the subject land



- Legend**
- Subject Land
 - Study Area
 - Prescribed Impact**
 - Human-made Structures
 - Non-native Vegetation
 - Habitat Connectivity

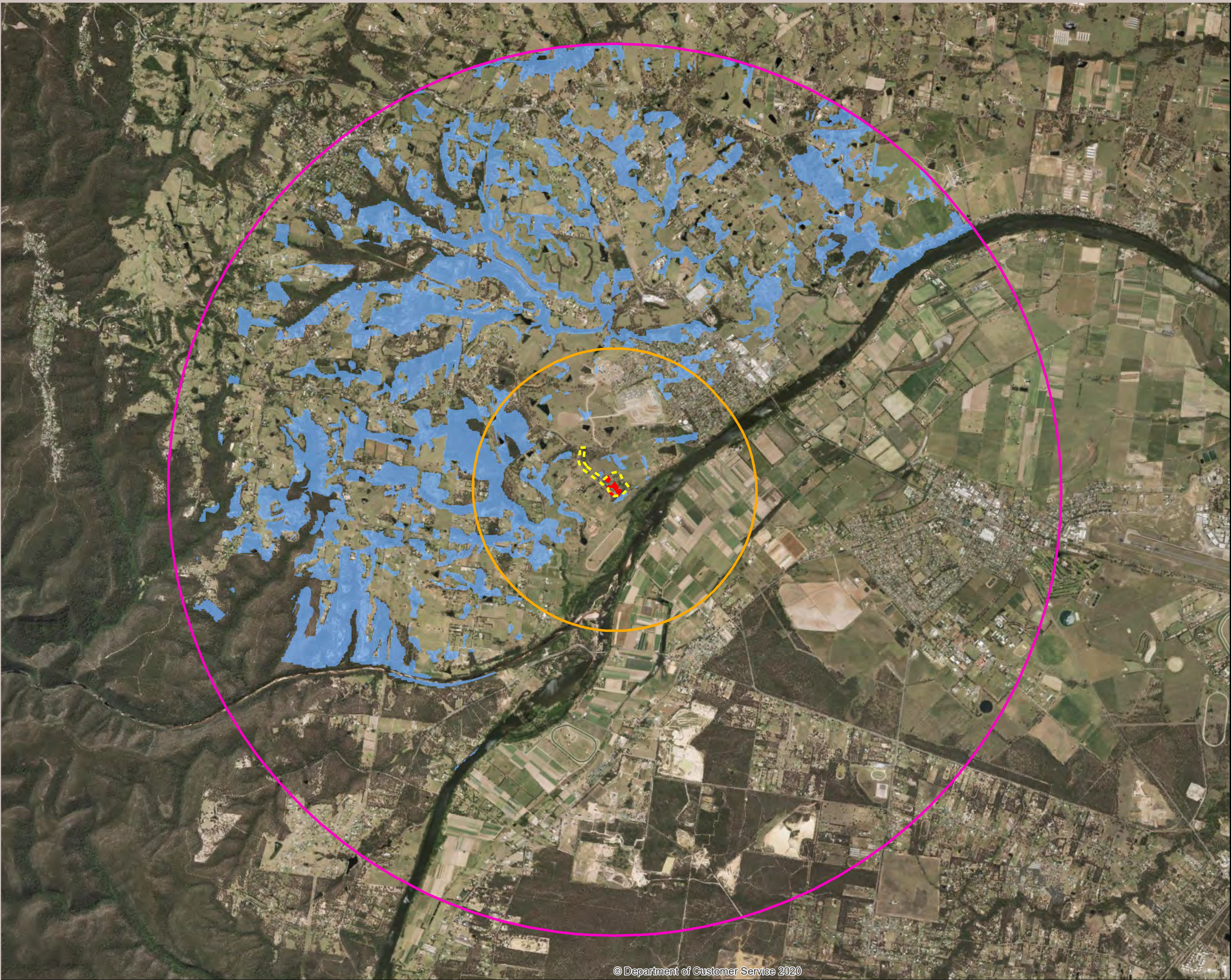
Image Source:
Image © NearMap 2019
Dated: 17/12/2019

Data Source:
NSW Government Spatial Services
SIX Maps 'Clip and Ship'
Hawkesbury LGA

Coordinate System: MGA Zone 56 (GDA 94)



Figure 9. Extent of prescribed impacts



Legend

- Subject Land
- Study Area
- 1,000 ha Locality
- 10,000 ha Locality
- Shale Sandstone Transition Forest

Image Source:
Image © NearMap 2019
Dated: 17/12/2019

Data Source:
NSW Government Spatial Services
SIX Maps 'Clip and Ship'
Hawkesbury LGA

DECCW NSW(2010).SCIV1
South Coast NSW Native
Vegetation Classification and Mapping.

OEH (2013). Remnant Vegetation
of the western Cumberland subregion,
2013 Update. Office of Environment
and Heritage, NSW

OEH (2016). The Native Vegetation of
the Sydney Metropolitan Area. Office
of Environment and Heritage NSW

Coordinate System: MGA Zone 56 (GDA 94)

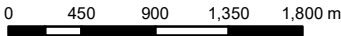


Figure 10. Extent of Shale Sandstone Transition Forest within a 10,000 ha area surrounding the subject land



- Legend**
- Subject Land
 - Study Area
 - Serious and Irreversible Impact Entity
 - Areas Not Requiring an Offset**
 - PCT 1081
 - Areas Requiring an Offset**
 - PCT 1395

Image Source:
Image © NearMap 2019
Dated: 17/12/2019

Data Source:
NSW Government Spatial Services
SIX Maps 'Clip and Ship'
Hawkesbury LGA

Coordinate System: MGA Zone 56 (GDA 94)



Figure 11. Thresholds for assessment