

St John of God Hospital  
Landscape SD Report  
October 2020



# Contents

- Landscape Masterplan
- Peripheral Landscape
- Existing Trees
- Materiality
- Planting Palette

# Introduction

The following landscape masterplan has been prepared to outline landscape improvements to accompany works at St John of God Hospital Richmond

# Objectives

The following landscape principles have been developed to guide the landscape design illustrated in this report

- Respect and enhance the setting and existing natural features of the site
- Provide pathways and spaces for physical activity and exploration
- Encourage formal and social interactions
- Provide gardens and spaces with familiar, human scale elements
- Encourage engagement with nature





# Landscape Masterplan

The primary landscape zones described in this proposal are the courtyards and immediate peripheral areas around the development.

External spaces have been designed for the use of patients staff and visitors to compliment the architectural proposal. The spaces aim to provide a calm, reflective setting and celebrate the historical and natural features of the site.

A series of interconnected courtyards provide paths for walking, and areas sitting and dining while also providing a green outlook from adjoining rooms.



- 01 Entertainment Quarter and Terrace Landscape
- 02 Western Courtyard
- 03 Eastern Courtyard



Peripheral Landscape



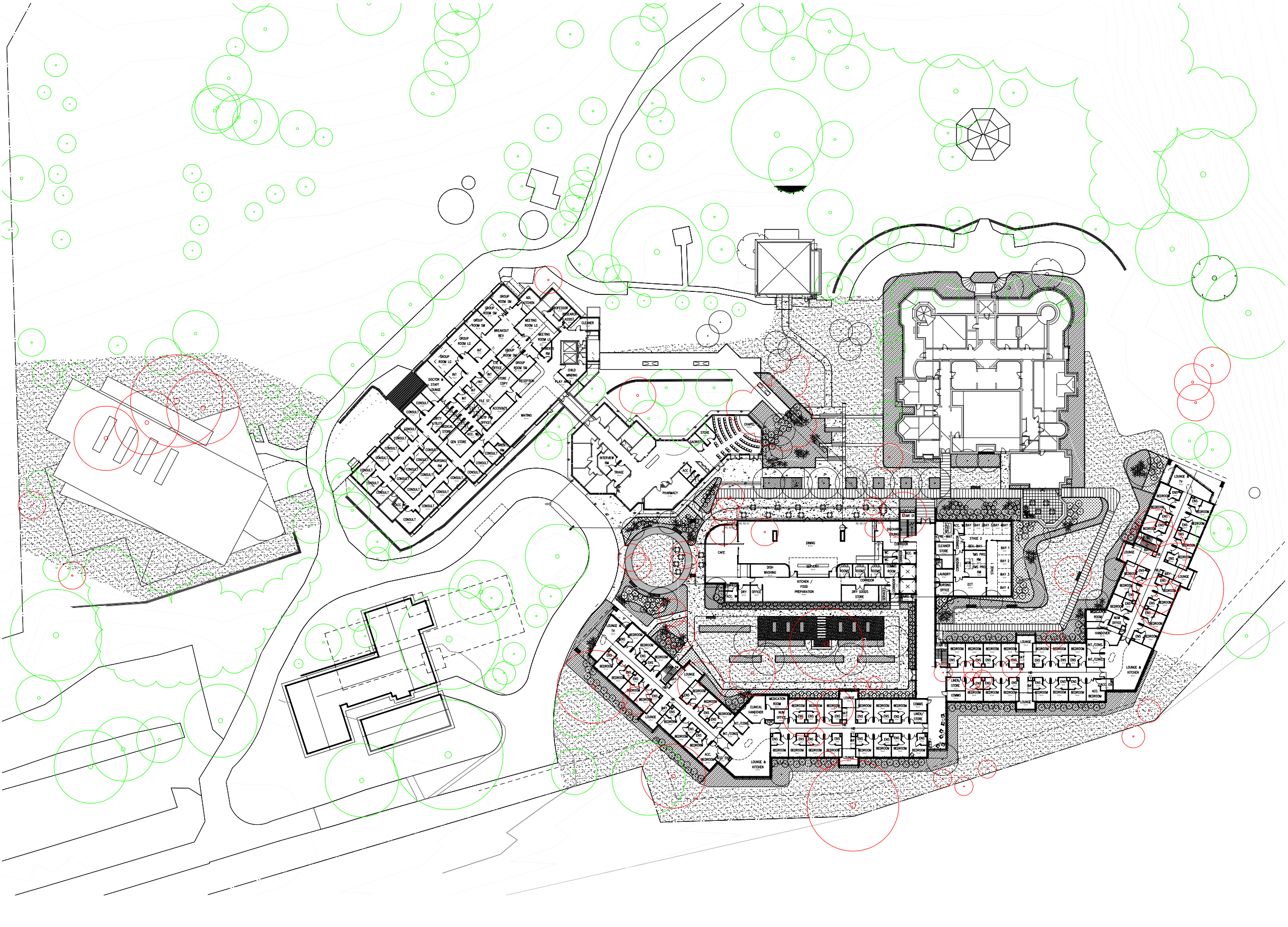


# Existing Trees

Trees are an important asset to this site. The canopy surrounding the area is significant, and the proposal aims to complement and enhance this aesthetic, and environment.

Existing trees are to be retained where possible with only trees affected by the development footprint and trees indicating particularly poor health or structure are proposed to be removed due to obvious safety issues

Refer to Australian Tree Consultants Tree Risk assessment dated 23/10/2019 for further information.





Existing Tree to be removed



Existing Tree to be retained



Planting and Materials

Proposed planting shall be a mixture of native and exotic species primarily chosen to be low maintenance and suitable for the local growing conditions all species selected shall be low allergenic and non toxic.

A consistent reliable frame of evergreen shrubs and hedges will provide a backdrop for external space. Within the smaller scale patient and staff areas species will be chosen for seasonal and textural interest providing a connection to nature for users. In broader external areas the height of planting in these spaces will consider CPTED principles to not create hiding spaces and obstructions in sightlines for pedestrians and vehicles.

Proposed trees will be a combination of both evergreen and deciduous species, with deciduous positioned to allow for solar access in the winter and shade in the summer.

Wherever possible existing trees are to be retained with trees to be removed only as necessary due to building and services location or poor health.

All landscaped areas are to be provided with and automatic drip irrigation system to ensure viability and the ongoing health of the landscape allowing for seasonal variation, extreme weather events and less reliance on the manual maintenance regime.



Indicative Planting Schedule

Botanical Name	Common Name	Mature Size
<b>Trees</b>		
<i>Albizia julibrissin</i>	Silk Tree	5 x 4
<i>Acer palmatum</i>	Japanese Maple	4 x 4
<i>Callistemon viminalis</i>	Bottlebrush	5 x 4
<i>Eucalyptus sideroxylon</i> “Pink”	Pink Flowered Iron Bark	15 x 10
<i>Gleditia triacanthos</i> ‘Shadmaster’	Honey Locust	12 x 10
<i>Lagerstroemia indica</i> ‘Natchez’	Crepe Myrtle	6 x 4
<i>Liriodendron tulipiferum</i>	Tulip Tree	20 x 8
<i>Melaleuca styphelioides</i>	Prickly Paperbark	8 x 6
<i>Nyssa sylvatica</i>	Tupelo	11 x 6
<i>Tristaniopsis laurina</i> ‘Lucsious’	Watergum	12 x 6
<i>Pyrus</i> ‘Chantileer’	Chanticleer Pear	11 x 6
<i>Pyrus</i> ‘Capital’	Capital Pear	11 x 3
<i>Ulmus parvifolia</i>	Chinese Elm	13 x 10
<b>Shrubs</b>		
<i>Acanthus mollis</i>	Oyster plant	1.5 x 1.5
<i>Acacia</i> ‘Limelight’	Limelight acacia	1 x 1
<i>Azalea</i> sp.	Azalea	1.2 x 1
<i>Choisya ternata</i>	Mexican Orange Blossom	1 x 2
<i>Correa alba</i>	Native Fuchsia	1 x 1
<i>Coleonema compactum</i>	Diosma Dwarf Pink	1 x 1
<i>Coleonema pulchellum</i> ‘Aurea’	Golden Diosma	1 x 1
<i>Daphne odora</i>	Daphne	1 x 1.5
<i>Dodonaea viscosa</i> ‘Purpurea’	Purple Hop Bush	1 x 3
<i>Echium candicans</i>	Pride of Madeira	1.5 x 2.5
<i>Hebe</i> ‘Blue Gem’	Blue Gem Hebe	1 x 1
<i>Leptospermum</i> ‘Pink Cascade’	Pink Tea Tree	.5 x 1
<i>Lavendula x intermedia</i>	Lavender	.6 x .6
<i>Plumbago</i> ‘Cape White’	Plumbago	3 x 2
<i>Photinia glabra</i> ‘Rubens’	Dwarf Photinia	2 x 2
<i>Phormium tenax</i>	New Zealand Flax	1.5 x 1.5
<i>Phormium</i> ‘Bronze Baby’	Bronze Flax	1 x 1
<i>Rosmarinus officianalis</i>	Rosemary	1 x 1
<i>Teucrium fruticans</i>	Bush Germander	1 x 1
<i>Viburnum tinus</i>	Laurustinus	3 x 2
<i>Westringia</i> ‘Blue Gem’	Native Rosemary	1 x 1
<i>Westringia brevifolia</i> ‘Lilac and Lace’	Varigated Coastal Rosemary	1 x 1
<b>Grasses, Groundcovers and Climbers</b>		
<i>Anigozanthus cultivars</i>	Kangaroo Paw	.4 x .6
<i>Anemone x hybrida</i>	Japanese Wind Flower	.4 x .4
<i>Ajuga reptans</i> ‘Catlins Giant’	Bugle Weed	.2 x 1
<i>Callistemon</i> ‘Little John’	Dwarf Bottlebrush	.5 x .5
<i>Carpobrotus glaucescens</i>	Pigface	.1 x 1
<i>Erigeron karvinskianus</i>	Seaside	.3 x .3
<i>Dietes iridoides</i>	Wild Iris	.6 x .5
<i>Gazania tomentosa</i>	Silver Gazania	.2 x 1
<i>Juniperus horizontalis</i> ‘Douglasii’	Juniper Groundcover	.1 x 1
<i>Liriope</i> ‘Evergreen Giant’	Giant Mondo	.4 x .4
<i>Lampanthus</i> cvs.	Trailing Ice Plant	.4 x .8
<i>Lomandra longifolia</i>	Mat Rush	.8 x .8
<i>Lomandra</i> ‘Tanika’	Dwarf Lomandra	.5 x .5
<i>Trachelospermum jasminoides</i>	Star Jasmine	.3 x 1
<i>Themeda</i> ‘Blue Mingo’	Blue Kangaroo Grass	.4 x .4
<i>Viola hederacea</i>	Native Violet	.1 x .5



Acanthus mollis



Gleditia triacanthos ‘Shadmaster’



Eucalyptus sideroxylon ‘Pink’



Coleonema compactum



Dodonaea viscosa ‘Purpurea’



Eucalyptus sideroxylon ‘Pink’

Materials

Material selection shall be made with an emphasis on durable low maintenance finishes. Materials shall be sympathetic to architectural finishes and locally appropriate. Materials shall be selected to ensure ease of ongoing maintenance and minimise opportunity for vandalism.

Paving surfaces are to ensure even safe surfaces with appropriate slip resistance with a neutral colour palette and of glare.

Seating shall be in a variety of formats for varying groups, ages and sizes with provision of seats with back and armrests though the spaces.

