

From: [Luke Gliganic](#)
To: kgchalker@bigpond.com
Subject: Liverpool Health and Academic Precinct: METHODOLOGY FOR ABORIGINAL CULTURAL HERITAGE ASSESSMENT
Date: Tuesday, 8 October 2019 12:15:00 PM
Attachments: [PR143932 Liverpool Hospital methodology.pdf](#)
[image001.png](#)

Our ref: PR143932

Date: 08 October 2019

Cubbitch Barta

kgchalker@bigpond.com

Dear Glenda Chalker,

Liverpool Health and Academic Precinct: METHODOLOGY FOR ABORIGINAL CULTURAL HERITAGE ASSESSMENT

It is an exciting time for the local community with the NSW Government investing \$740 million for the redevelopment of Liverpool Hospital to deliver the best healthcare for the people of south western Sydney.

RPS Australia East Pty Ltd (RPS) has been engaged by Health Infrastructure (the proponent) to conduct an Aboriginal Cultural Heritage Assessment (ACHA) for the proposed Liverpool Hospital redevelopment.

A methodology has been prepared for the Aboriginal Cultural Heritage Assessment Report (ACHAR). This includes a methodology for archaeological survey and the identification and assessment of cultural significance in accordance with the *Guide to Investigating, Assessing and Reporting on Aboriginal Cultural Heritage in NSW* (Office of Environment and Heritage 2011) (the Guide) and the *Code of Practice for Archaeological Investigation of Aboriginal Objects in New South Wales* (the Code of Practice) (Department of Environment, Climate Change and Water 2010).

Please see the attached letter for the ACHAR methodology and more information. Note that the due date for responses is **COB on Monday 04 November 2019**.

Your sincerely

For RPS Australia East Pty Ltd,

Luke

Luke Gliganic

Heritage Consultant
RPS | Australia Asia Pacific
Level 13, 255 Pitt Street
Sydney NSW 2000, Australia
T +61 2 8099 3200 **F** +61 2 8099 3299
D +61 2 8099 3224 **M** +61 4 3919 3846
E luke.gliganic@rpsgroup.com.au
rpsgroup.com



From: [Luke Gliganic](#)
To: Joanne.Buckskin@cumberland.nsw.gov.au
Subject: Liverpool Health and Academic Precinct: METHODOLOGY FOR ABORIGINAL CULTURAL HERITAGE ASSESSMENT
Date: Tuesday, 8 October 2019 12:09:00 PM
Attachments: [PR143932 Liverpool Hospital methodology.pdf](#)
[image001.png](#)

Our ref: PR143932

Date: 08 October 2019

Cumberland Council

Joanne.Buckskin@cumberland.nsw.gov.au

Dear Joanne Buckskin,

Liverpool Health and Academic Precinct: METHODOLOGY FOR ABORIGINAL CULTURAL HERITAGE ASSESSMENT

It is an exciting time for the local community with the NSW Government investing \$740 million for the redevelopment of Liverpool Hospital to deliver the best healthcare for the people of south western Sydney.

RPS Australia East Pty Ltd (RPS) has been engaged by Health Infrastructure (the proponent) to conduct an Aboriginal Cultural Heritage Assessment (ACHA) for the proposed Liverpool Hospital redevelopment.

A methodology has been prepared for the Aboriginal Cultural Heritage Assessment Report (ACHAR). This includes a methodology for archaeological survey and the identification and assessment of cultural significance in accordance with the *Guide to Investigating, Assessing and Reporting on Aboriginal Cultural Heritage in NSW* (Office of Environment and Heritage 2011) (the Guide) and the *Code of Practice for Archaeological Investigation of Aboriginal Objects in New South Wales* (the Code of Practice) (Department of Environment, Climate Change and Water 2010).

Please see the attached letter for the ACHAR methodology and more information. Note that the due date for responses is **COB on Monday 04 November 2019**.

Your sincerely

For RPS Australia East Pty Ltd,

Luke

Luke Gliganic

Heritage Consultant
RPS | Australia Asia Pacific
Level 13, 255 Pitt Street
Sydney NSW 2000, Australia
T +61 2 8099 3200 **F** +61 2 8099 3299
D +61 2 8099 3224 **M** +61 4 3919 3846
E luke.gliganic@rpsgroup.com.au
rpsgroup.com



From: [Luke Gliganic](#)
To: justinecoplin@optusnet.com.au
Subject: Liverpool Health and Academic Precinct: METHODOLOGY FOR ABORIGINAL CULTURAL HERITAGE ASSESSMENT
Date: Tuesday, 8 October 2019 12:11:00 PM
Attachments: [PR143932 Liverpool Hospital methodology.pdf](#)
[image001.png](#)

Our ref: PR143932

Date: 08 October 2019

Darug Custodian Aboriginal Corporation
justinecoplin@optusnet.com.au

Dear Justine Coplin,

Liverpool Health and Academic Precinct: METHODOLOGY FOR ABORIGINAL CULTURAL HERITAGE ASSESSMENT

It is an exciting time for the local community with the NSW Government investing \$740 million for the redevelopment of Liverpool Hospital to deliver the best healthcare for the people of south western Sydney.

RPS Australia East Pty Ltd (RPS) has been engaged by Health Infrastructure (the proponent) to conduct an Aboriginal Cultural Heritage Assessment (ACHA) for the proposed Liverpool Hospital redevelopment.

A methodology has been prepared for the Aboriginal Cultural Heritage Assessment Report (ACHAR). This includes a methodology for archaeological survey and the identification and assessment of cultural significance in accordance with the *Guide to Investigating, Assessing and Reporting on Aboriginal Cultural Heritage in NSW* (Office of Environment and Heritage 2011) (the Guide) and the *Code of Practice for Archaeological Investigation of Aboriginal Objects in New South Wales* (the Code of Practice) (Department of Environment, Climate Change and Water 2010).

Please see the attached letter for the ACHAR methodology and more information. Note that the due date for responses is **COB on Monday 04 November 2019**.

Your sincerely

For RPS Australia East Pty Ltd,

Luke

Luke Gliganic

Heritage Consultant
RPS | Australia Asia Pacific
Level 13, 255 Pitt Street
Sydney NSW 2000, Australia
T +61 2 8099 3200 **F** +61 2 8099 3299
D +61 2 8099 3224 **M** +61 4 3919 3846
E luke.gliganic@rpsgroup.com.au
rpsgroup.com



From: [Luke Gliganic](#)
To: daruglandobservations@gmail.com
Subject: Liverpool Health and Academic Precinct: METHODOLOGY FOR ABORIGINAL CULTURAL HERITAGE ASSESSMENT
Date: Tuesday, 8 October 2019 12:03:00 PM
Attachments: [PR143932 Liverpool Hospital methodology.pdf](#)
[image001.png](#)

Our ref: PR143932

Date: 08 October 2019

Darug Land Observations

daruglandobservations@gmail.com

Dear Jamie and Anna Workman,

Liverpool Health and Academic Precinct: METHODOLOGY FOR ABORIGINAL CULTURAL HERITAGE ASSESSMENT

It is an exciting time for the local community with the NSW Government investing \$740 million for the redevelopment of Liverpool Hospital to deliver the best healthcare for the people of south western Sydney.

RPS Australia East Pty Ltd (RPS) has been engaged by Health Infrastructure (the proponent) to conduct an Aboriginal Cultural Heritage Assessment (ACHA) for the proposed Liverpool Hospital redevelopment.

A methodology has been prepared for the Aboriginal Cultural Heritage Assessment Report (ACHAR). This includes a methodology for archaeological survey and the identification and assessment of cultural significance in accordance with the *Guide to Investigating, Assessing and Reporting on Aboriginal Cultural Heritage in NSW* (Office of Environment and Heritage 2011) (the Guide) and the *Code of Practice for Archaeological Investigation of Aboriginal Objects in New South Wales* (the Code of Practice) (Department of Environment, Climate Change and Water 2010).

Please see the attached letter for the ACHAR methodology and more information. Note that the due date for responses is **COB on Monday 04 November 2019**.

Your sincerely

For RPS Australia East Pty Ltd,

Luke

Luke Gliganic

Heritage Consultant
RPS | Australia Asia Pacific
Level 13, 255 Pitt Street
Sydney NSW 2000, Australia
T +61 2 8099 3200 **F** +61 2 8099 3299
D +61 2 8099 3224 **M** +61 4 3919 3846
E luke.gliganic@rpsgroup.com.au
rpsgroup.com



From: [Luke Gliganic](#)
To: desmond4552@hotmail.com
Subject: Liverpool Health and Academic Precinct: METHODOLOGY FOR ABORIGINAL CULTURAL HERITAGE ASSESSMENT
Date: Tuesday, 8 October 2019 12:05:00 PM
Attachments: [PR143932 Liverpool Hospital methodology.pdf](#)
[image001.png](#)

Our ref: PR143932

Date: 08 October 2019

Des Dyer

desmond4552@hotmail.com

Dear Des Dyer,

Liverpool Health and Academic Precinct: METHODOLOGY FOR ABORIGINAL CULTURAL HERITAGE ASSESSMENT

It is an exciting time for the local community with the NSW Government investing \$740 million for the redevelopment of Liverpool Hospital to deliver the best healthcare for the people of south western Sydney.

RPS Australia East Pty Ltd (RPS) has been engaged by Health Infrastructure (the proponent) to conduct an Aboriginal Cultural Heritage Assessment (ACHA) for the proposed Liverpool Hospital redevelopment.

A methodology has been prepared for the Aboriginal Cultural Heritage Assessment Report (ACHAR). This includes a methodology for archaeological survey and the identification and assessment of cultural significance in accordance with the *Guide to Investigating, Assessing and Reporting on Aboriginal Cultural Heritage in NSW* (Office of Environment and Heritage 2011) (the Guide) and the *Code of Practice for Archaeological Investigation of Aboriginal Objects in New South Wales* (the Code of Practice) (Department of Environment, Climate Change and Water 2010).

Please see the attached letter for the ACHAR methodology and more information. Note that the due date for responses is **COB on Monday 04 November 2019**.

Your sincerely

For RPS Australia East Pty Ltd,

Luke

Luke Gliganic

Heritage Consultant
RPS | Australia Asia Pacific
Level 13, 255 Pitt Street
Sydney NSW 2000, Australia
T +61 2 8099 3200 **F** +61 2 8099 3299
D +61 2 8099 3224 **M** +61 4 3919 3846
E luke.gliganic@rpsgroup.com.au
rpsgroup.com



From: [Luke Gliganic](#)
To: didgengunawalclan@yahoo.com.au
Subject: Liverpool Health and Academic Precinct: METHODOLOGY FOR ABORIGINAL CULTURAL HERITAGE ASSESSMENT
Date: Tuesday, 8 October 2019 11:59:00 AM
Attachments: [PR143932 Liverpool Hospital methodology.pdf](#)
[image001.png](#)

Our ref: PR143932

Date: 08 October 2019

Didge Ngunawal Clan

didgengunawalclan@yahoo.com.au

Dear Lillie Carroll and Paul Boyd,

Liverpool Health and Academic Precinct: METHODOLOGY FOR ABORIGINAL CULTURAL HERITAGE ASSESSMENT

It is an exciting time for the local community with the NSW Government investing \$740 million for the redevelopment of Liverpool Hospital to deliver the best healthcare for the people of south western Sydney.

RPS Australia East Pty Ltd (RPS) has been engaged by Health Infrastructure (the proponent) to conduct an Aboriginal Cultural Heritage Assessment (ACHA) for the proposed Liverpool Hospital redevelopment.

A methodology has been prepared for the Aboriginal Cultural Heritage Assessment Report (ACHAR). This includes a methodology for archaeological survey and the identification and assessment of cultural significance in accordance with the *Guide to Investigating, Assessing and Reporting on Aboriginal Cultural Heritage in NSW* (Office of Environment and Heritage 2011) (the Guide) and the *Code of Practice for Archaeological Investigation of Aboriginal Objects in New South Wales* (the Code of Practice) (Department of Environment, Climate Change and Water 2010).

Please see the attached letter for the ACHAR methodology and more information. Note that the due date for responses is **COB on Monday 04 November 2019**.

Your sincerely

For RPS Australia East Pty Ltd,

Luke

Luke Gliganic

Heritage Consultant
RPS | Australia Asia Pacific
Level 13, 255 Pitt Street
Sydney NSW 2000, Australia
T +61 2 8099 3200 **F** +61 2 8099 3299
D +61 2 8099 3224 **M** +61 4 3919 3846
E luke.gliganic@rpsgroup.com.au
rpsgroup.com



From: [Luke Gliganic](#)
To: ["reception@glalc.org.au"](#); ["mwilliams@glalc.org.au"](#); ["Rsheridan@glalc.org.au"](#)
Subject: Liverpool Health and Academic Precinct: METHODOLOGY FOR ABORIGINAL CULTURAL HERITAGE ASSESSMENT
Date: Tuesday, 8 October 2019 1:09:00 PM
Attachments: [PR143932 Liverpool Hospital methodology.pdf](#)
[image001.png](#)

Our ref: PR143932

Date: 08 October 2019

Gandangara Local Aboriginal Land Council

Dear Sir/Madam,

Liverpool Health and Academic Precinct: METHODOLOGY FOR ABORIGINAL CULTURAL HERITAGE ASSESSMENT

It is an exciting time for the local community with the NSW Government investing \$740 million for the redevelopment of Liverpool Hospital to deliver the best healthcare for the people of south western Sydney.

RPS Australia East Pty Ltd (RPS) has been engaged by Health Infrastructure (the proponent) to conduct an Aboriginal Cultural Heritage Assessment (ACHA) for the proposed Liverpool Hospital redevelopment.

A methodology has been prepared for the Aboriginal Cultural Heritage Assessment Report (ACHAR). This includes a methodology for archaeological survey and the identification and assessment of cultural significance in accordance with the *Guide to Investigating, Assessing and Reporting on Aboriginal Cultural Heritage in NSW* (Office of Environment and Heritage 2011) (the Guide) and the *Code of Practice for Archaeological Investigation of Aboriginal Objects in New South Wales* (the Code of Practice) (Department of Environment, Climate Change and Water 2010).

Please see the attached letter for the ACHAR methodology and more information. Note that the due date for responses is **COB on Monday 04 November 2019**.

Your sincerely

For RPS Australia East Pty Ltd,

Luke

Luke Gliganic

Heritage Consultant
RPS | Australia Asia Pacific
Level 13, 255 Pitt Street
Sydney NSW 2000, Australia
T +61 2 8099 3200 **F** +61 2 8099 3299
D +61 2 8099 3224 **M** +61 4 3919 3846
E luke.gliganic@rpsgroup.com.au
rpsgroup.com



From: [Luke Gliganic](#)
To: ginninderra.corp@gmail.com
Subject: Liverpool Health and Academic Precinct: METHODOLOGY FOR ABORIGINAL CULTURAL HERITAGE ASSESSMENT
Date: Tuesday, 8 October 2019 12:07:00 PM
Attachments: [PR143932 Liverpool Hospital methodology.pdf](#)
[image001.png](#)

Our ref: PR143932

Date: 08 October 2019

Ginninderra Aboriginal Corporation
ginninderra.corp@gmail.com

Dear Krystle Carroll,

Liverpool Health and Academic Precinct: METHODOLOGY FOR ABORIGINAL CULTURAL HERITAGE ASSESSMENT

It is an exciting time for the local community with the NSW Government investing \$740 million for the redevelopment of Liverpool Hospital to deliver the best healthcare for the people of south western Sydney.

RPS Australia East Pty Ltd (RPS) has been engaged by Health Infrastructure (the proponent) to conduct an Aboriginal Cultural Heritage Assessment (ACHA) for the proposed Liverpool Hospital redevelopment.

A methodology has been prepared for the Aboriginal Cultural Heritage Assessment Report (ACHAR). This includes a methodology for archaeological survey and the identification and assessment of cultural significance in accordance with the *Guide to Investigating, Assessing and Reporting on Aboriginal Cultural Heritage in NSW* (Office of Environment and Heritage 2011) (the Guide) and the *Code of Practice for Archaeological Investigation of Aboriginal Objects in New South Wales* (the Code of Practice) (Department of Environment, Climate Change and Water 2010).

Please see the attached letter for the ACHAR methodology and more information. Note that the due date for responses is **COB on Monday 04 November 2019**.

Your sincerely

For RPS Australia East Pty Ltd,

Luke

Luke Gliganic

Heritage Consultant
RPS | Australia Asia Pacific
Level 13, 255 Pitt Street
Sydney NSW 2000, Australia
T +61 2 8099 3200 **F** +61 2 8099 3299
D +61 2 8099 3224 **M** +61 4 3919 3846
E luke.gliganic@rpsgroup.com.au
rpsgroup.com



From: [Luke Gliganic](#)
To: philipkhan.acn@live.com.au
Subject: Liverpool Health and Academic Precinct: METHODOLOGY FOR ABORIGINAL CULTURAL HERITAGE ASSESSMENT
Date: Tuesday, 8 October 2019 12:01:00 PM
Attachments: [PR143932 Liverpool Hospital methodology.pdf](#)
[image001.png](#)

Our ref: PR143932

Date: 08 October 2019

Kamilaroi Yankuntjatjara Working Group

philipkhan.acn@live.com.au

Dear Phil Khan,

Liverpool Health and Academic Precinct: METHODOLOGY FOR ABORIGINAL CULTURAL HERITAGE ASSESSMENT

It is an exciting time for the local community with the NSW Government investing \$740 million for the redevelopment of Liverpool Hospital to deliver the best healthcare for the people of south western Sydney.

RPS Australia East Pty Ltd (RPS) has been engaged by Health Infrastructure (the proponent) to conduct an Aboriginal Cultural Heritage Assessment (ACHA) for the proposed Liverpool Hospital redevelopment.

A methodology has been prepared for the Aboriginal Cultural Heritage Assessment Report (ACHAR). This includes a methodology for archaeological survey and the identification and assessment of cultural significance in accordance with the *Guide to Investigating, Assessing and Reporting on Aboriginal Cultural Heritage in NSW* (Office of Environment and Heritage 2011) (the Guide) and the *Code of Practice for Archaeological Investigation of Aboriginal Objects in New South Wales* (the Code of Practice) (Department of Environment, Climate Change and Water 2010).

Please see the attached letter for the ACHAR methodology and more information. Note that the due date for responses is **COB on Monday 04 November 2019**.

Your sincerely

For RPS Australia East Pty Ltd,

Luke

Luke Gliganic

Heritage Consultant
RPS | Australia Asia Pacific
Level 13, 255 Pitt Street
Sydney NSW 2000, Australia
T +61 2 8099 3200 **F** +61 2 8099 3299
D +61 2 8099 3224 **M** +61 4 3919 3846
E luke.gliganic@rpsgroup.com.au
rpsgroup.com



From: [Luke Gliganic](#)
To: vicki.slater@hotmail.com
Subject: Liverpool Health and Academic Precinct: METHODOLOGY FOR ABORIGINAL CULTURAL HERITAGE ASSESSMENT
Date: Tuesday, 8 October 2019 12:10:00 PM
Attachments: [PR143932 Liverpool Hospital methodology.pdf](#)
[image001.png](#)

Our ref: PR143932

Date: 08 October 2019

Kawul Cultural Services
vicki.slater@hotmail.com

Dear Vicki Slater,

Liverpool Health and Academic Precinct: METHODOLOGY FOR ABORIGINAL CULTURAL HERITAGE ASSESSMENT

It is an exciting time for the local community with the NSW Government investing \$740 million for the redevelopment of Liverpool Hospital to deliver the best healthcare for the people of south western Sydney.

RPS Australia East Pty Ltd (RPS) has been engaged by Health Infrastructure (the proponent) to conduct an Aboriginal Cultural Heritage Assessment (ACHA) for the proposed Liverpool Hospital redevelopment.

A methodology has been prepared for the Aboriginal Cultural Heritage Assessment Report (ACHAR). This includes a methodology for archaeological survey and the identification and assessment of cultural significance in accordance with the *Guide to Investigating, Assessing and Reporting on Aboriginal Cultural Heritage in NSW* (Office of Environment and Heritage 2011) (the Guide) and the *Code of Practice for Archaeological Investigation of Aboriginal Objects in New South Wales* (the Code of Practice) (Department of Environment, Climate Change and Water 2010).

Please see the attached letter for the ACHAR methodology and more information. Note that the due date for responses is **COB on Monday 04 November 2019**.

Your sincerely

For RPS Australia East Pty Ltd,

Luke

Luke Gliganic
Heritage Consultant
RPS | Australia Asia Pacific
Level 13, 255 Pitt Street
Sydney NSW 2000, Australia
T +61 2 8099 3200 **F** +61 2 8099 3299
D +61 2 8099 3224 **M** +61 4 3919 3846
E luke.gliganic@rpsgroup.com.au
rpsgroup.com



From: [Luke Gliganic](#)
To: BurrowsN@liverpool.nsw.gov.au
Subject: Liverpool Health and Academic Precinct: METHODOLOGY FOR ABORIGINAL CULTURAL HERITAGE ASSESSMENT
Date: Tuesday, 8 October 2019 12:16:00 PM
Attachments: [PR143932 Liverpool Hospital methodology.pdf](#)
[image001.png](#)

Our ref: PR143932

Date: 08 October 2019

Liverpool City Council
BurrowsN@liverpool.nsw.gov.au

Dear Norma Burrows,

Liverpool Health and Academic Precinct: METHODOLOGY FOR ABORIGINAL CULTURAL HERITAGE ASSESSMENT

It is an exciting time for the local community with the NSW Government investing \$740 million for the redevelopment of Liverpool Hospital to deliver the best healthcare for the people of south western Sydney.

RPS Australia East Pty Ltd (RPS) has been engaged by Health Infrastructure (the proponent) to conduct an Aboriginal Cultural Heritage Assessment (ACHA) for the proposed Liverpool Hospital redevelopment.

A methodology has been prepared for the Aboriginal Cultural Heritage Assessment Report (ACHAR). This includes a methodology for archaeological survey and the identification and assessment of cultural significance in accordance with the *Guide to Investigating, Assessing and Reporting on Aboriginal Cultural Heritage in NSW* (Office of Environment and Heritage 2011) (the Guide) and the *Code of Practice for Archaeological Investigation of Aboriginal Objects in New South Wales* (the Code of Practice) (Department of Environment, Climate Change and Water 2010).

Please see the attached letter for the ACHAR methodology and more information. Note that the due date for responses is **COB on Monday 04 November 2019**.

Your sincerely

For RPS Australia East Pty Ltd,

Luke

Luke Gliganic

Heritage Consultant
RPS | Australia Asia Pacific
Level 13, 255 Pitt Street
Sydney NSW 2000, Australia
T +61 2 8099 3200 **F** +61 2 8099 3299
D +61 2 8099 3224 **M** +61 4 3919 3846
E luke.gliganic@rpsgroup.com.au
rpsgroup.com



From: [Luke Gliganic](#)
To: murrabidgeemullangari@yahoo.com.au
Subject: Liverpool Health and Academic Precinct: METHODOLOGY FOR ABORIGINAL CULTURAL HERITAGE ASSESSMENT
Date: Tuesday, 8 October 2019 12:13:00 PM
Attachments: [PR143932 Liverpool Hospital methodology.pdf](#)
[image001.png](#)

Our ref: PR143932

Date: 08 October 2019

Murra Bidgee Mullangari Aboriginal Corporation
murrabidgeemullangari@yahoo.com.au

Dear Ryan Johnson,

Liverpool Health and Academic Precinct: METHODOLOGY FOR ABORIGINAL CULTURAL HERITAGE ASSESSMENT

It is an exciting time for the local community with the NSW Government investing \$740 million for the redevelopment of Liverpool Hospital to deliver the best healthcare for the people of south western Sydney.

RPS Australia East Pty Ltd (RPS) has been engaged by Health Infrastructure (the proponent) to conduct an Aboriginal Cultural Heritage Assessment (ACHA) for the proposed Liverpool Hospital redevelopment.

A methodology has been prepared for the Aboriginal Cultural Heritage Assessment Report (ACHAR). This includes a methodology for archaeological survey and the identification and assessment of cultural significance in accordance with the *Guide to Investigating, Assessing and Reporting on Aboriginal Cultural Heritage in NSW* (Office of Environment and Heritage 2011) (the Guide) and the *Code of Practice for Archaeological Investigation of Aboriginal Objects in New South Wales* (the Code of Practice) (Department of Environment, Climate Change and Water 2010).

Please see the attached letter for the ACHAR methodology and more information. Note that the due date for responses is **COB on Monday 04 November 2019**.

Your sincerely

For RPS Australia East Pty Ltd,

Luke

Luke Gliganic

Heritage Consultant
RPS | Australia Asia Pacific
Level 13, 255 Pitt Street
Sydney NSW 2000, Australia
T +61 2 8099 3200 **F** +61 2 8099 3299
D +61 2 8099 3224 **M** +61 4 3919 3846
E luke.gliganic@rpsgroup.com.au
rpsgroup.com



From: [Luke Gliganic](#)
To: yulayculturalservices@gmail.com
Subject: Liverpool Health and Academic Precinct: METHODOLOGY FOR ABORIGINAL CULTURAL HERITAGE ASSESSMENT
Date: Tuesday, 8 October 2019 12:11:00 PM
Attachments: [PR143932 Liverpool Hospital methodology.pdf](#)
[image001.png](#)

Our ref: PR143932

Date: 08 October 2019

Yulay Cultural Services
yulayculturalservices@gmail.com

Dear Arika Jalomaki,

Liverpool Health and Academic Precinct: METHODOLOGY FOR ABORIGINAL CULTURAL HERITAGE ASSESSMENT

It is an exciting time for the local community with the NSW Government investing \$740 million for the redevelopment of Liverpool Hospital to deliver the best healthcare for the people of south western Sydney.

RPS Australia East Pty Ltd (RPS) has been engaged by Health Infrastructure (the proponent) to conduct an Aboriginal Cultural Heritage Assessment (ACHA) for the proposed Liverpool Hospital redevelopment.

A methodology has been prepared for the Aboriginal Cultural Heritage Assessment Report (ACHAR). This includes a methodology for archaeological survey and the identification and assessment of cultural significance in accordance with the *Guide to Investigating, Assessing and Reporting on Aboriginal Cultural Heritage in NSW* (Office of Environment and Heritage 2011) (the Guide) and the *Code of Practice for Archaeological Investigation of Aboriginal Objects in New South Wales* (the Code of Practice) (Department of Environment, Climate Change and Water 2010).

Please see the attached letter for the ACHAR methodology and more information. Note that the due date for responses is **COB on Monday 04 November 2019**.

Your sincerely

For RPS Australia East Pty Ltd,

Luke

Luke Gliganic

Heritage Consultant
RPS | Australia Asia Pacific
Level 13, 255 Pitt Street
Sydney NSW 2000, Australia
T +61 2 8099 3200 **F** +61 2 8099 3299
D +61 2 8099 3224 **M** +61 4 3919 3846
E luke.gliganic@rpsgroup.com.au
rpsgroup.com



From: [Luke Gliganic](#)
To: yurrandaali_cs@hotmail.com
Subject: Liverpool Health and Academic Precinct: METHODOLOGY FOR ABORIGINAL CULTURAL HERITAGE ASSESSMENT
Date: Tuesday, 8 October 2019 12:05:00 PM
Attachments: [PR143932 Liverpool Hospital methodology.pdf](#)
[image001.png](#)

Our ref: PR143932

Date: 08 October 2019

Yurrandaali Cultural Services
yurrandaali_cs@hotmail.com

Dear Bo Field,

Liverpool Health and Academic Precinct: METHODOLOGY FOR ABORIGINAL CULTURAL HERITAGE ASSESSMENT

It is an exciting time for the local community with the NSW Government investing \$740 million for the redevelopment of Liverpool Hospital to deliver the best healthcare for the people of south western Sydney.

RPS Australia East Pty Ltd (RPS) has been engaged by Health Infrastructure (the proponent) to conduct an Aboriginal Cultural Heritage Assessment (ACHA) for the proposed Liverpool Hospital redevelopment.

A methodology has been prepared for the Aboriginal Cultural Heritage Assessment Report (ACHAR). This includes a methodology for archaeological survey and the identification and assessment of cultural significance in accordance with the *Guide to Investigating, Assessing and Reporting on Aboriginal Cultural Heritage in NSW* (Office of Environment and Heritage 2011) (the Guide) and the *Code of Practice for Archaeological Investigation of Aboriginal Objects in New South Wales* (the Code of Practice) (Department of Environment, Climate Change and Water 2010).

Please see the attached letter for the ACHAR methodology and more information. Note that the due date for responses is **COB on Monday 04 November 2019**.

Your sincerely

For RPS Australia East Pty Ltd,

Luke

Luke Gliganic

Heritage Consultant
RPS | Australia Asia Pacific
Level 13, 255 Pitt Street
Sydney NSW 2000, Australia
T +61 2 8099 3200 **F** +61 2 8099 3299
D +61 2 8099 3224 **M** +61 4 3919 3846
E luke.gliganic@rpsgroup.com.au
rpsgroup.com



Date: 08 October 2019

Level 13, 255 Pitt Street
Sydney NSW 2000
T +61 2 8270 8300

LIVERPOOL HOSPITAL AND ACADEMIC PRECINCT

METHODOLOGY FOR ABORIGINAL CULTURAL HERITAGE ASSESSMENT

Introduction

RPS Australia East Pty Ltd (RPS) has been engaged by Health Infrastructure (the proponent) to conduct an Aboriginal Cultural Heritage Assessment (ACHA) for the proposed Liverpool Hospital redevelopment. The Project Area comprises the land within and adjacent to Liverpool Hospital (Figure 1).

The proponent intends to redevelop the hospital, including:

- Cancer Services (including inpatient, ambulatory, diagnostic, outpatient and research facilities)
- Critical care services (Emergency Department, Intensive Care, and Neonatal Intensive Care Unit)
- Maternity and Paediatric inpatient and ambulatory care facilities
- Ambulatory Care and outpatient clinical spaces
- Expansion of interventional radiology and surgery services
- Expansion of haematology services including bone marrow transplant
- Associated clinical and non-clinical support services
- Facilities and capacity for further teaching and research in partnership with industry and higher education partners,
- Integrated Pathology Services
- A new multi-storey carpark on the existing Liverpool Hospital site, and,
- Civil works to enable the construction of the main works.

The proponent proposes to submit a State significant development application for the project. The ACHA process, including consultation under the *Aboriginal cultural heritage consultation requirements for proponents* 2010 (Consultation Requirements) is being undertaken in accordance with the Secretary's Environmental Assessment Requirements (SEARs).

Methodology

A methodology has been prepared for the Aboriginal Cultural Heritage Assessment Report (ACHAR). This includes a methodology for archaeological survey and the identification and assessment of cultural significance in accordance with the *Guide to Investigating, Assessing and Reporting on Aboriginal Cultural Heritage in NSW* (Office of Environment and Heritage 2011) (the Guide) and the *Code of Practice for Archaeological Investigation of Aboriginal Objects in New South Wales* (the Code of Practice) (Department of Environment, Climate Change and Water 2010).

This ACHAR methodology is provided for review and comment by Registered Aboriginal Parties (RAPs) in accordance with the Consultation Requirements. A test excavation methodology has not been included, but if required would be issued as a separate document.

Archaeological survey

RPS proposes a targeted archaeological survey of the Project Area in accordance with the Code of Practice. The purpose of the survey is to record all (or a representative sample of all) material traces of Aboriginal land use visible on the ground surface or as landscape features and to assess subsurface archaeological potential.

Methods

The survey will be conducted on foot in evenly spaced transects where possible. The transects will be recorded as survey units, which will be defined based on landform, landscape features, considerable changes in survey conditions (such as surface visibility and exposures) and other considerations. Topographic and aerial maps will be used to define survey units.

The archaeological survey will be tracked using a hand-held GPS, which will be used to record the locations of features within the Project Area including disturbed areas. A photographic record will be kept of all the survey units, representative landform units, objects of interest and levels of disturbance of the Project Area.

All evidence of Aboriginal cultural material will be recorded in accordance with the Code of Practice. This includes all material evidence of Aboriginal land use such as stone tools, shell middens, scarred trees or rock art. It should be noted that some sites and/or Aboriginal places can be intangible, and whilst they may not be visible these places have cultural significance to Aboriginal people. The following criteria will be used when recording material traces of Aboriginal land use (OEH 2010):

- The spatial extent of the visible objects, or direct evidence of their location.
- Obvious physical boundaries where present, i.e. mounds and middens.
- Identification by the Aboriginal community on the basis of cultural information.

For the purposes of this assessment an Aboriginal object or place will be defined by the spatial extent of visible material traces or the direct evidence of their location.

Cultural significance

The purpose of consultation under the Consultation Requirements is to consult with Aboriginal people who hold cultural knowledge relevant to determining the cultural significance of Aboriginal cultural heritage within the Project Area. In accordance with the Consultation Requirements, RPS is providing the methodology for Aboriginal cultural heritage assessment to all RAPs for comment. RPS will take into consideration all comments received by **COB on Monday 04 November 2019**.

RPS will also provide an avenue for RAPs to provide cultural information throughout the cultural heritage assessment process. RAPs may forward information regarding cultural knowledge to Luke Gliganic (luke.gliganic@rpsgroup.com.au) at any time. When providing cultural information, RPS asks that RAPs declare the confidentiality of that information. If confidential, RPS will ensure it is classified and recorded in accordance with the directions of the RAP providing the information.

RPS will forward the draft ACHAR to all RAPs for comment. RPS will take into consideration any comments received within 28 days after the draft report is sent. Correspondence, including cultural information, will be

Our Ref: PR141285



recorded and discussed in the ACHAR, unless the information is too sensitive to be made public. If sensitive information is received, the protocol outlined in Figure 2 will be adopted, or another protocol as developed in consultation with RAPs.

Yours sincerely,
for RPS Australia East Pty Ltd

A handwritten signature in black ink, appearing to read 'Luke Gliganic', is positioned above the printed name.

Luke Gliganic
Heritage Consultant



Figure 1: Project Area

LOCATION: LIVERPOOL, NSW	Path: N:\Projects\Conics_Sydney\PR143932 - Liverpool Hospital\GIS\MXD\SSD\Figure_SSD_template.mxd	DATUM: GDA94 PROJECTION: MGA Zone 56
PURPOSE: HERITAGE Technician: Luke.Gliganic Date: 19/09/2019	VERSION (PLAN BY):	Data Sources: RPS Land and Property 2015

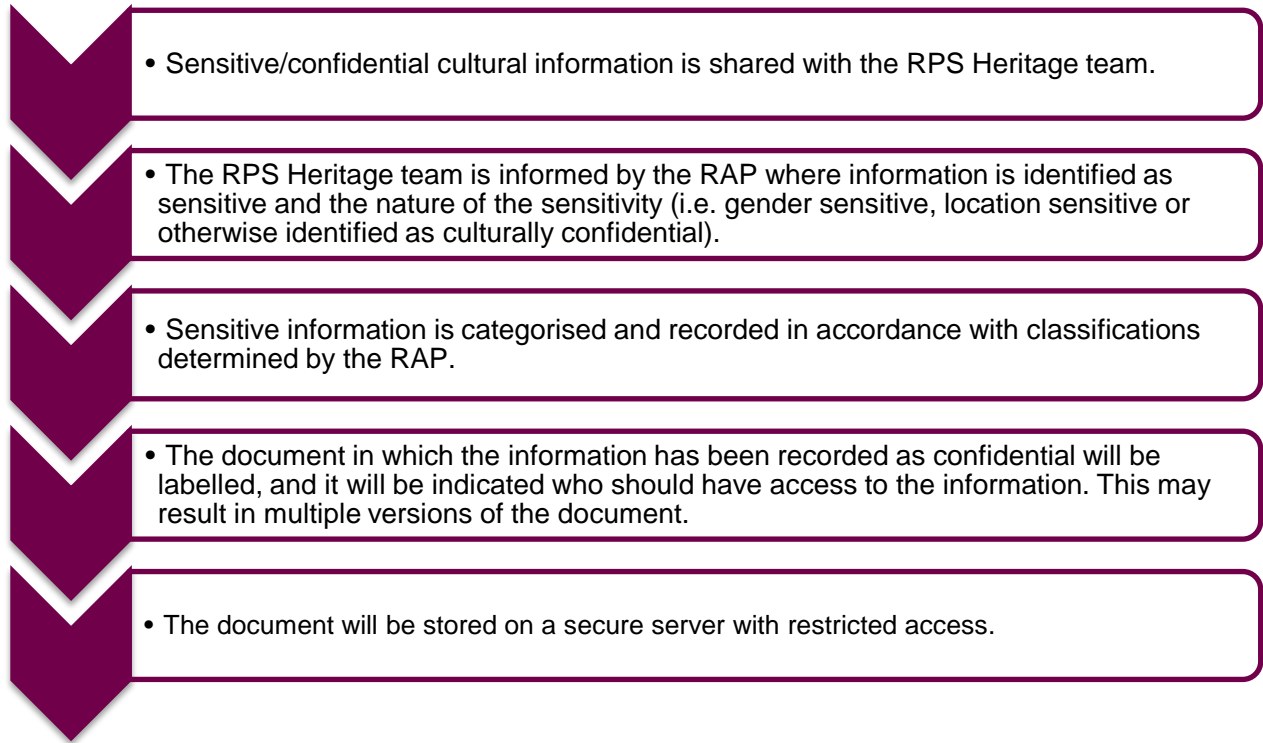
CLIENT: JOHNSTAFF
JOB REF: PR143932

RPS AUSTRALIA EAST PTY LTD (ABN 44 140 292 762)
Level 13, 255 Pitt Street Sydney, 2001
T: 02 8270 8300 www.rpsgroup.com.au

MAKING
COMPLEX
EASY



Figure 2: Confidential cultural information protocol



From: [Ryan Johnson](#)
To: [Luke Gliganic](#)
Subject: RE: Liverpool Health and Academic Precinct: METHODOLOGY FOR ABORIGINAL CULTURAL HERITAGE ASSESSMENT
Date: Tuesday, 8 October 2019 1:13:51 PM
Attachments: [image003.png](#)

CAUTION: This email originated from outside of RPS.

Hi Luke

I have read the project information and methodology for the above project, I endorse the recommendations made by RPS Group.

Kind regards

Ryan Johnson | **Murra Bidgee Mullangari**
0475565517



Aboriginal Corporation Cultural Heritage

A: PO Box 246, Seven Hills, NSW, 2147
E: murrabidgeemullangari@yahoo.com.au
ICN: 8112

Note: Privileged/Confidential information may be contained in this message and may be subject to legal privilege. Access to this e-mail by anyone other than the intended is unauthorised. If you are not the intended recipient (or responsible for delivery of the message to such person), you may not use, copy, distribute or deliver to anyone this message (or any part of its contents) or take any action in reliance on it. In such case, you should destroy this message, and notify us immediately. If you have received this email in error, please notify us immediately by e-mail or telephone and delete the e-mail from any computer. If you or your employer does not consent to internet e-mail messages of this kind, please notify us immediately. All reasonable precautions have been taken to ensure no viruses are present in this e-mail. As our company cannot accept responsibility for any loss or damage arising from the use of this e-mail or attachments we recommend that you subject these to your virus checking procedures prior to use. The views, opinions, conclusions and other informations expressed in this electronic mail are not given or endorsed by the company unless otherwise indicated by an authorized representative independent of this message.

From: Luke Gliganic [mailto:Luke.Gliganic@rpsgroup.com.au]
Sent: Tuesday, 8 October 2019 12:14 PM
To: murrabidgeemullangari@yahoo.com.au
Subject: Liverpool Health and Academic Precinct: METHODOLOGY FOR ABORIGINAL CULTURAL HERITAGE ASSESSMENT

Our ref: PR143932

Date: 08 October 2019

Murra Bidgee Mullangari Aboriginal Corporation
murrabidgeemullangari@yahoo.com.au

Dear Ryan Johnson,

Liverpool Health and Academic Precinct: METHODOLOGY FOR ABORIGINAL CULTURAL HERITAGE ASSESSMENT

It is an exciting time for the local community with the NSW Government investing \$740 million for the redevelopment of Liverpool Hospital to deliver the best healthcare for the people of south western Sydney.

RPS Australia East Pty Ltd (RPS) has been engaged by Health Infrastructure (the proponent) to conduct an Aboriginal Cultural Heritage Assessment (ACHA) for the proposed Liverpool Hospital redevelopment.

A methodology has been prepared for the Aboriginal Cultural Heritage Assessment Report (ACHAR). This includes a methodology for archaeological survey and the identification and assessment of cultural significance in accordance with the *Guide to Investigating, Assessing and Reporting on Aboriginal Cultural Heritage in NSW* (Office of Environment and Heritage 2011) (the Guide) and the *Code of Practice for Archaeological Investigation of Aboriginal Objects in New South Wales* (the Code of Practice) (Department of Environment, Climate Change and Water 2010).

Please see the attached letter for the ACHAR methodology and more information. Note that the due date for responses is **COB on Monday 04 November 2019**.

Your sincerely

For RPS Australia East Pty Ltd,

Luke

Luke Gliganic

Heritage Consultant
RPS | Australia Asia Pacific
Level 13, 255 Pitt Street
Sydney NSW 2000, Australia
T +61 2 8099 3200 **F** +61 2 8099 3299
D +61 2 8099 3224 **M** +61 4 3919 3846
E luke.gliganic@rpsgroup.com.au
rpsgroup.com



This email and its attachments may contain confidential and/or privileged information and is for the sole use of the intended recipient(s). The contents of this email must not be disclosed to or used by or copied in any way by anyone other than the intended recipient(s). If you are not the intended recipient, any use, distribution or copying of the information contained in this email and its attachments is strictly prohibited. Confidentiality and/or privilege in the content of this email is not waived. If you have received this email in error, please email the sender by replying to this message and immediately delete and destroy any copies of this email and any attachments. Please note that neither RPS Consultants Pty Ltd, any subsidiary, related entity ('RPS') nor the sender accepts any responsibility for viruses and it is your responsibility to scan or otherwise check this email and any attachments. The views or opinions expressed are the author's own and may not reflect the views or opinions of RPS

From: [Caza X](#)
To: [Luke Gliganic](#)
Subject: Re: Liverpool Health and Academic Precinct: METHODOLOGY FOR ABORIGINAL CULTURAL HERITAGE ASSESSMENT
Date: Sunday, 13 October 2019 6:22:32 PM
Attachments: [image001.png](#)

CAUTION: This email originated from outside of RPS.

A1

Indigenous Services

Contact: Carolyn

M: 0411650057

E: Cazadirect@live.com

A: 10 Marie Pitt Place, Glenmore Park, NSW 2745

ABN: 20 616 970 327

Hi Luke

I support the methodology for the liverpool health and Academic Precinct project.

Thank you

Carolyn Hickey

From: Luke Gliganic <Luke.Gliganic@rpsgroup.com.au>
Sent: Tuesday, 8 October 2019 12:14 PM
To: cazadirect@live.com <cazadirect@live.com>
Subject: Liverpool Health and Academic Precinct: METHODOLOGY FOR ABORIGINAL CULTURAL HERITAGE ASSESSMENT

Our ref: PR143932

Date: 08 October 2019

A1 Indigenous Services

cazadirect@live.com

Dear Carolyn Hickey,

Liverpool Health and Academic Precinct: METHODOLOGY FOR ABORIGINAL CULTURAL HERITAGE ASSESSMENT

It is an exciting time for the local community with the NSW Government investing \$740 million for the redevelopment of Liverpool Hospital to deliver the best healthcare for the people of south western Sydney.

RPS Australia East Pty Ltd (RPS) has been engaged by Health Infrastructure (the proponent) to conduct an Aboriginal Cultural Heritage Assessment (ACHA) for the proposed Liverpool Hospital redevelopment.

A methodology has been prepared for the Aboriginal Cultural Heritage Assessment Report (ACHAR). This includes a methodology for archaeological survey and the identification and assessment of cultural significance in accordance with the *Guide to Investigating, Assessing and Reporting on Aboriginal Cultural Heritage in NSW* (Office of Environment and Heritage 2011) (the Guide) and the *Code of Practice for Archaeological Investigation of Aboriginal Objects in New South Wales* (the

Code of Practice) (Department of Environment, Climate Change and Water 2010).

Please see the attached letter for the ACHAR methodology and more information. Note that the due date for responses is **COB on Monday 04 November 2019**.

Your sincerely

For RPS Australia East Pty Ltd,

Luke

Luke Gliganic

Heritage Consultant

RPS | Australia Asia Pacific

Level 13, 255 Pitt Street

Sydney NSW 2000, Australia

T +61 2 8099 3200 **F** +61 2 8099 3299

D +61 2 8099 3224 **M** +61 4 3919 3846

E luke.gliganic@rpsgroup.com.au

rpsgroup.com



This email and its attachments may contain confidential and/or privileged information and is for the sole use of the intended recipient(s). The contents of this email must not be disclosed to or used by or copied in any way by anyone other than the intended recipient(s). If you are not the intended recipient, any use, distribution or copying of the information contained in this email and its attachments is strictly prohibited. Confidentiality and/or privilege in the content of this email is not waived. If you have received this email in error, please email the sender by replying to this message and immediately delete and destroy any copies of this email and any attachments. Please note that neither RPS Consultants Pty Ltd, any subsidiary, related entity ('RPS') nor the sender accepts any responsibility for viruses and it is your responsibility to scan or otherwise check this email and any attachments. The views or opinions expressed are the author's own and may not reflect the views or opinions of RPS

From: [philip.khan](#)
To: [Luke.Gliganic](#)
Subject: RE: Liverpool Health and Academic Precinct: METHODOLOGY FOR ABORIGINAL CULTURAL HERITAGE ASSESSMENT
Date: Tuesday, 15 October 2019 3:04:52 PM
Attachments: [image001.png](#)
[C70CB44FFEB741C7BC37B2D09D219553F508065801.png](#)

CAUTION: This email originated from outside of RPS.

Hi Luke,

Thank you for your report regarding Liverpool Hospital & Academic Precinct.

Liverpool Hospital is around 200m from Georges river, the whole area is highly significant to the Aboriginal people as there would of been acres right next to the river & lakes where a lot of birdlife & fish, kangaroos, reptiles & bushland food. They would have stayed in this area for a extended period of time with humpies all over the area..

The only time they would have moved for short periods would be for “ Mens & Womens Business” & then return to their humpies if still standing.

We also agree and support your methodology.

Thanks

Phil

Kamilaroi Yankuntjatjara Working Group

Aboriginal Cultural Heritage Surveys, Lawn Mowing & Fencing

ABN 33 979 702 507

Not registered for GST

78 Forbes Street, Emu Plains NSW 2750

Mobile: 0434545982

Email: philipkhan.acn@live.com.au



From: Luke Gliganic <Luke.Gliganic@rpsgroup.com.au>

Sent: Tuesday, October 8, 2019 12:01:09 PM

To: philipkhan.acn@live.com.au <philipkhan.acn@live.com.au>

Subject: Liverpool Health and Academic Precinct: METHODOLOGY FOR ABORIGINAL CULTURAL HERITAGE ASSESSMENT

Our ref: PR143932

Date: 08 October 2019

Kamilaroi Yankuntjatjara Working Group

philipkhan.acn@live.com.au

Dear Phil Khan,

Liverpool Health and Academic Precinct: METHODOLOGY FOR ABORIGINAL CULTURAL HERITAGE ASSESSMENT

It is an exciting time for the local community with the NSW Government investing \$740 million for the redevelopment of Liverpool Hospital to deliver the best healthcare for the people of south western Sydney.

RPS Australia East Pty Ltd (RPS) has been engaged by Health Infrastructure (the proponent) to conduct an Aboriginal Cultural Heritage Assessment (ACHA) for the proposed Liverpool Hospital redevelopment.

A methodology has been prepared for the Aboriginal Cultural Heritage Assessment Report (ACHAR). This includes a methodology for archaeological survey and the identification and assessment of cultural significance in accordance with the *Guide to Investigating, Assessing and Reporting on Aboriginal Cultural Heritage in NSW* (Office of Environment and Heritage 2011) (the Guide) and the *Code of Practice for Archaeological Investigation of Aboriginal Objects in New South Wales* (the Code of Practice) (Department of Environment, Climate Change and Water 2010).

Please see the attached letter for the ACHAR methodology and more information. Note that the due date for responses is **COB on Monday 04 November 2019**.

Your sincerely

For RPS Australia East Pty Ltd,

Luke

Luke Gliganic

Heritage Consultant
RPS | Australia Asia Pacific
Level 13, 255 Pitt Street
Sydney NSW 2000, Australia
T +61 2 8099 3200 **F** +61 2 8099 3299
D +61 2 8099 3224 **M** +61 4 3919 3846
E luke.gliganic@rpsgroup.com.au
rpsgroup.com



This email and its attachments may contain confidential and/or privileged information and is for the sole use of the intended recipient(s). The contents of this email must not be disclosed to or used by or copied in any way by anyone other than the intended recipient(s). If you are not the intended recipient, any use, distribution or copying of the information contained in this email and its attachments is strictly prohibited. Confidentiality and/or privilege in the content of this email is not waived. If you have received this email in error, please email the sender by replying to this message and immediately delete and destroy any copies of this email and any attachments. Please note that neither RPS Consultants Pty Ltd, any subsidiary, related entity ('RPS') nor the sender accepts any responsibility for viruses and it is your responsibility to scan or otherwise check this email and any attachments. The views or opinions expressed are the author's own and may not reflect the views or opinions of RPS

DARUG CUSTODIAN

ABORIGINAL CORPORATION



DARUG CUSTODIAN
ABORIGINAL
CORPORATION

PO BOX 81 WINDSOR 2756
PHONE: 0245775181 FAX: 0245775098
MOBILE: 0414962766 Justine Coplin
EMAIL: justinecoplin@optusnet.com.au

Attention: RPS

Date: 15/10/19

Subject: Methodology for LIVERPOOL HOSPITAL AND ACADEMIC PRECINCT

Dear Luke

Our group is a non- profit organisation that has been active for over forty years in Western Sydney, we are a Darug community group with over three hundred members. The main aim in our constitution is the care of Darug sites, places, wildlife and to promote our culture and provide education on the Darug history.

Our group promotes Darug Culture and works on numerous projects that are culturally based as a proud and diverse group. It has been discussed by our group and with many consultants and researches that our history is generic and is usually from an early colonists perspective or solely based on archaeology and sites. These histories are adequate but they lack the people's stories and parts of important events and connections of the Darug people and also other Aboriginal people that now call this area home and have done so for numerous generations.

This area is significant to the Darug people due to the evidence of continued occupation, within close proximity to this project site there is a complex of significant sites.

Landscapes and landforms are significant to us for the information that they hold and the connection to Darug people. Aboriginal people (Darug) had a complex lifestyle that was based on respect and belonging to the land, all aspects of life and survival did not impact on the land but helped to care for and conserve land and the sustenance that the land

provided. As Darug people moved through the land there were no impacts left, although there was evidence of movement and lifestyle, the people moved through areas with knowledge of their areas

and followed signs that were left in the landscape. Darug people knew which areas were not to be entered and respected the areas that were sacred.

Knowledge of culture, lifestyle and lore have been part of Darug people's lives for thousands of years, this was passed down to the next generations and this started with birth and continued for a lifetime. Darug people spent a lifetime learning and as people grew older they passed through stages of knowledge, elders became elders with the learning of stages of knowledge not by their age, being an elder is part of the kinship system this was a very complicated system based on respect.

Darug sites are all connected, our country has a complex of sites that hold our heritage and past history, evidence of the Darug lifestyle and occupation are all across our country, due to the rapid development of Sydney many of our sites have been destroyed, our sites are thousands of years old and within the short period of time that Australia has been developed pre contact our sites have disappeared.

The *Aboriginal cultural heritage consultation requirements for proponents* Section 4.1.8 refers to "Aboriginal organisations representing Aboriginal people who hold cultural knowledge". Recent consultation meetings have revealed that many of these Aboriginal organisations and individuals do not hold cultural knowledge of the Western Sydney area. The increasing involvement of such parties in cultural heritage management means that genuine local Aboriginal organisations are unable to properly care for our cultural heritage.

Many Aboriginal organisations listed in the OEH response letter do not contribute to the Aboriginal community of Western Sydney. Individuals listed in the OEH response letter do not represent the community and while they may be consulted with, should not be employed for their own personal financial benefit.

Our organisation is committed to providing benefits back to our local Aboriginal community through such measures as funding the local Aboriginal juniors' touch football team, painting classes for the local children and donating money to various charities. Employment in cultural heritage activities is source of income that organisations such as ours can use to contribute to beneficial activities and support within the community.

Darug custodian Aboriginal Corporation's site officers have knowledge of Darug land, Darug Culture, Oral histories, landforms, sites, Darug history, wildlife, flora and legislative requirements. We have worked with consultants and developers for many years in Western

Sydney (Darug Land) for conservation, site works, developments and interpretation/education strategie

Darug Custodian Aboriginal Corporation have received and reviewed the report for LIVERPOOL HOSPITAL AND ACADEMIC PRECINCT.

We support the recommendations set out in this report.

Please contact us with all further enquiries on the above contacts.

Regards

A handwritten signature in black ink, appearing to read 'Justine Coplin', is written over a faint, light blue rectangular background.

Justine Coplin

From: [desmond.dyer](#)
To: [Luke Gliganic](#)
Subject: Re: Liverpool Health and Academic Precinct: METHODOLOGY FOR ABORIGINAL CULTURAL HERITAGE ASSESSMENT
Date: Wednesday, 23 October 2019 9:14:55 PM
Attachments: [image001.png](#)

CAUTION: This email originated from outside of RPS.

Hi Luke,

The Darug Aboriginal Land care, has read your Methodology , we agree with it and support it for this project .

Kind regards

Des

From: Luke Gliganic <Luke.Gliganic@rpsgroup.com.au>
Sent: Tuesday, 8 October 2019 12:05 PM
To: desmond4552@hotmail.com <desmond4552@hotmail.com>
Subject: Liverpool Health and Academic Precinct: METHODOLOGY FOR ABORIGINAL CULTURAL HERITAGE ASSESSMENT

Our ref: PR143932

Date: 08 October 2019

Des Dyer

desmond4552@hotmail.com

Dear Des Dyer,

Liverpool Health and Academic Precinct: METHODOLOGY FOR ABORIGINAL CULTURAL HERITAGE ASSESSMENT

It is an exciting time for the local community with the NSW Government investing \$740 million for the redevelopment of Liverpool Hospital to deliver the best healthcare for the people of south western Sydney.

RPS Australia East Pty Ltd (RPS) has been engaged by Health Infrastructure (the proponent) to conduct an Aboriginal Cultural Heritage Assessment (ACHA) for the proposed Liverpool Hospital redevelopment.

A methodology has been prepared for the Aboriginal Cultural Heritage Assessment Report (ACHAR). This includes a methodology for archaeological survey and the identification and assessment of cultural significance in accordance with the *Guide to Investigating, Assessing and Reporting on Aboriginal Cultural Heritage in NSW* (Office of Environment and Heritage 2011) (the Guide) and the *Code of Practice for Archaeological Investigation of Aboriginal Objects in New South Wales* (the Code of Practice) (Department of Environment, Climate Change and Water 2010).

Please see the attached letter for the ACHAR methodology and more information. Note that the due date for responses is **COB on Monday 04 November 2019**.

Your sincerely

For RPS Australia East Pty Ltd,

Luke

Luke Gliganic

Heritage Consultant
RPS | Australia Asia Pacific
Level 13, 255 Pitt Street
Sydney NSW 2000, Australia
T +61 2 8099 3200 **F** +61 2 8099 3299
D +61 2 8099 3224 **M** +61 4 3919 3846
E luke.gliganic@rpsgroup.com.au

rpsgroup.com



This email and its attachments may contain confidential and/or privileged information and is for the sole use of the intended recipient(s). The contents of this email must not be disclosed to or used by or copied in any way by anyone other than the intended recipient(s). If you are not the intended recipient, any use, distribution or copying of the information contained in this email and its attachments is strictly prohibited. Confidentiality and/or privilege in the content of this email is not waived. If you have received this email in error, please email the sender by replying to this message and immediately delete and destroy any copies of this email and any attachments. Please note that neither RPS Consultants Pty Ltd, any subsidiary, related entity ('RPS') nor the sender accepts any responsibility for viruses and it is your responsibility to scan or otherwise check this email and any attachments. The views or opinions expressed are the author's own and may not reflect the views or opinions of RPS

From: [Vicki Slater](#)
To: [Luke Gliganic](#)
Subject: Re: Liverpool Health and Academic Precinct: METHODOLOGY FOR ABORIGINAL CULTURAL HERITAGE ASSESSMENT
Date: Monday, 4 November 2019 5:08:58 PM

CAUTION: This email originated from outside of RPS.

Hi Luke

Kawul Cultural Services have read the draft Methodology & agrees with it.

Regards

Vicki Slater
Manager

On 8 Oct. 2019 12:10 pm, Luke Gliganic <Luke.Gliganic@rpsgroup.com.au> wrote:

Our ref: PR143932

Date: 08 October 2019

Kawul Cultural Services

vicki.slater@hotmail.com

Dear Vicki Slater,

Liverpool Health and Academic Precinct: METHODOLOGY FOR ABORIGINAL CULTURAL HERITAGE ASSESSMENT

It is an exciting time for the local community with the NSW Government investing \$740 million for the redevelopment of Liverpool Hospital to deliver the best healthcare for the people of south western Sydney.

RPS Australia East Pty Ltd (RPS) has been engaged by Health Infrastructure (the proponent) to conduct an Aboriginal Cultural Heritage Assessment (ACHA) for the proposed Liverpool Hospital redevelopment.

A methodology has been prepared for the Aboriginal Cultural Heritage Assessment Report (ACHAR). This includes a methodology for archaeological survey and the identification and assessment of cultural significance in accordance with the *Guide to Investigating, Assessing and Reporting on Aboriginal Cultural Heritage in NSW* (Office of Environment and Heritage 2011) (the Guide) and the *Code of Practice for Archaeological Investigation of Aboriginal Objects in New South Wales* (the Code of Practice) (Department of Environment, Climate Change and Water 2010).

Please see the attached letter for the ACHAR methodology and more information. Note that the due date for responses is **COB on Monday 04 November 2019**.

Your sincerely

For RPS Australia East Pty Ltd,

Luke

Luke Gliganic

Heritage Consultant
RPS | Australia Asia Pacific
Level 13, 255 Pitt Street
Sydney NSW 2000, Australia
T +61 2 8099 3200 **F** +61 2 8099 3299
D +61 2 8099 3224 **M** +61 4 3919 3846
E luke.gliganic@rpsgroup.com.au
rpsgroup.com



This email and its attachments may contain confidential and/or privileged information and is for the sole use of the intended recipient(s). The contents of this email must not be disclosed to or used by or copied in any way by anyone other than the intended recipient(s). If you are not the intended recipient, any use, distribution or copying of the information contained in this email and its attachments is strictly prohibited. Confidentiality and/or privilege in the content of this email is not waived. If you have received this email in error, please email the sender by replying to this message and immediately delete and destroy any copies of this email and any attachments. Please note that neither RPS Consultants Pty Ltd, any subsidiary, related entity ('RPS') nor the sender accepts any responsibility for viruses and it is your responsibility to scan or otherwise check this email and any attachments. The views or opinions expressed are the author's own and may not reflect the views or opinions of RPS

Step 4.4 – RAP review

From: [Luke Gliganic](#)
To: luke.gliganic@rps.com.au
Subject: Liverpool Health and Academic Precinct: Aboriginal Cultural Heritage Assessment Report RAP review
Date: Thursday, 16 January 2020 3:04:50 PM

Dear sir/madam,

**Liverpool Health
and Academic Precinct: Aboriginal Cultural Heritage Assessment Report RAP
review**

Thank you for your
continued involvement in the Liverpool Health and Academic Precinct
redevelopment project.

In accordance with Step 4.4 of the *Aboriginal cultural heritage consultation
requirements for proponents* 2010, we seek your feedback on
the draft Aboriginal Cultural Heritage Assessment Reports (ACHARs) prepared for
this project. The draft ACHARs are being provided to all Registered Aboriginal
Parties (RAPs) on this project.

Please find attached
the draft ACHARs for the main works and for the multi-storey carpark for your
review. Note that the Aboriginal Archaeological Assessment reports (Appendix C)
is also included for your review.

Can you please provide
any comments or concerns that you may have on the draft report by **COB on 13
February 2020**.

Looking forward to
your feedback.

Cheers,

Luke

**Luke
Gliganic**

Heritage

Consultant

RPS | Australia Asia Pacific

Level 13, 255 Pitt Street

Sydney NSW 2000, Australia

T +61 2 8099 3200 **F** +61 2 8099 3299

D +61 2 8099 3224 **M** +61 4 3919 3846

E luke.gliganic@rpsgroup.com.au

rpsgroup.com

Files attached to this message

Filename	Size	Checksum (SHA256)
PR143932 - Liverpool Hospital SSD1 - 2.0 - ACHAR combined.pdf	3.39 MB	684eda354543cce3b523d43fa1f7160eeca505fc4bbfe493f9317681d28a72ba
PR143932 - Liverpool Hospital SSD1 - 2.0 - AAA combined.pdf	7.08 MB	b13e5674212dc6651d7b9b43a2abc2b980c1042c7aafef60b272df42911b4214
PR143932 - Liverpool Hospital SSD2 - 2.0 - ACHAR combined.pdf	3.53 MB	7fb5031cd311dd4e1ec86f1b6ccc024eea6f53f68651ef53d9d17c449d4a037a
PR143932 - Liverpool Hospital SSD2 - 2.0 - AAA combined.pdf	5.49 MB	5e1f55afc7371bb091754a5e3cc68dfda766b030439dbf02176979b9b86a7b0e

Please click on the following link to download the attachments:

<https://filetransfer.rpsgroup.com/message/KhDDrAxp9kyzg9PPi0laI0>

This email or download link can be forwarded to anyone.

The attachments are available until: **Thursday, 13 February.**

Message ID: KhDDrAxp9kyzg9PPi0laI0

Download Files

From: [Ryan Johnson](#)
To: [Luke Gliganic](#)
Subject: RE: Liverpool Health and Academic Precinct: Aboriginal Cultural Heritage Assessment Report RAP review
Date: Thursday, 16 January 2020 3:35:54 PM

CAUTION: This email originated from outside of RPS.

Hi Luke,

I have read the ACHA report for the above project, I endorse the recommendations made.

Thanks

Ryan Johnson | **Murra Bidgee Mullangari**



Aboriginal Corporation Cultural Heritage

A: PO Box 246, Seven Hills, NSW, 2147
E: murrabidgeemullangari@yahoo.com.au
ICN: 8112

Note: Privileged/Confidential information may be contained in this message and may be subject to legal privilege. Access to this e-mail by anyone other than the intended is unauthorised. If you are not the intended recipient (or responsible for delivery of the message to such person), you may not use, copy, distribute or deliver to anyone this message (or any part of its contents) or take any action in reliance on it. In such case, you should destroy this message, and notify us immediately. If you have received this email in error, please notify us immediately by e-mail or telephone and delete the e-mail from any computer. If you or your employer does not consent to internet e-mail messages of this kind, please notify us immediately. All reasonable precautions have been taken to ensure no viruses are present in this e-mail. As our company cannot accept responsibility for any loss or damage arising from the use of this e-mail or attachments we recommend that you subject these to your virus checking procedures prior to use. The views, opinions, conclusions and other informations expressed in this electronic mail are not given or endorsed by the company unless otherwise indicated by an authorized representative independent of this message.

From: Luke Gliganic [mailto:itsupport@rpsgroup.com]
Sent: Thursday, 16 January 2020 3:05 PM
To: luke.gliganic@rps.com.au
Subject: Liverpool Health and Academic Precinct: Aboriginal Cultural Heritage Assessment Report RAP review

Dear sir/madam,

**Liverpool Health
and Academic Precinct: Aboriginal Cultural Heritage Assessment Report RAP
review**

Thank you for your
continued involvement in the Liverpool Health and Academic Precinct

redevelopment project.

In accordance with Step 4.4 of the *Aboriginal cultural heritage consultation requirements for proponents* 2010, we seek your feedback on the draft Aboriginal Cultural Heritage Assessment Reports (ACHARs) prepared for this project. The draft ACHARs are being provided to all Registered Aboriginal Parties (RAPs) on this project.

Please find attached the draft ACHARs for the main works and for the multi-storey carpark for your review. Note that the Aboriginal Archaeological Assessment reports (Appendix C) is also included for your review.

Can you please provide any comments or concerns that you may have on the draft report by **COB on 13 February 2020**.

Looking forward to your feedback.

Cheers,

Luke

**Luke
Glignic**

Heritage
Consultant

RPS | Australia Asia Pacific

Level 13, 255 Pitt Street

Sydney NSW 2000, Australia

T +61 2 8099 3200 **F** +61 2 8099 3299

D +61 2 8099 3224 **M** +61 4 3919 3846

E luke.glignic@rpsgroup.com.au

Files attached to this message

Filename	Size	Checksum (SHA256)
PR143932 - Liverpool Hospital SSD1 - 2.0 - ACHAR combined.pdf	3.39 MB	684eda354543cce3b523d43fa1f7160eeca505fc4bbfe493f9317681d28a72ba
PR143932 - Liverpool Hospital SSD1 - 2.0 - AAA combined.pdf	7.08 MB	b13e5674212dc6651d7b9b43a2abc2b980c1042c7aafef60b272df42911b4214
PR143932 - Liverpool Hospital SSD2 - 2.0 - ACHAR combined.pdf	3.53 MB	7fb5031cd311dd4e1ec86f1b6ccc024eea6f53f68651ef53d9d17c449d4a037a
PR143932 - Liverpool Hospital SSD2 - 2.0 - AAA combined.pdf	5.49 MB	5e1f55afc7371bb091754a5e3cc68dfda766b030439dbf02176979b9b86a7b0e

Please click on the following link to download the attachments:

<https://filetransfer.rpsgroup.com/message/KhDDrAxp9kyzg9PPi0laI0>

This email or download link can be forwarded to anyone.

The attachments are available until: **Thursday, 13 February.**

Message ID: KhDDrAxp9kyzg9PPi0laI0

[Download Files](#)

This e-mail message and any attached file is the property of the sender and is sent in confidence to the addressee only.

Internet communications are not secure and RPS is not responsible for their abuse by third parties, any alteration or corruption in transmission or for any loss or damage caused by a virus or by any other means.

RPS Group Plc, company number: 208 7786 (England). Registered office: 20 Western Avenue Milton Park Abingdon Oxfordshire OX14 4SH.

RPS Group Plc web link: <http://www.rpsgroup.com>

From: [Ryan Johnson](#)
To: [Luke Gliganic](#)
Subject: RE: Liverpool Health and Academic Precinct: Aboriginal Cultural Heritage Assessment Report RAP review
Date: Thursday, 16 January 2020 3:35:54 PM

CAUTION: This email originated from outside of RPS.

Hi Luke,

I have read the ACHA report for the above project, I endorse the recommendations made.

Thanks

Ryan Johnson | **Murra Bidgee Mullangari**



Aboriginal Corporation Cultural Heritage

A: PO Box 246, Seven Hills, NSW, 2147
E: murrabidgeemullangari@yahoo.com.au
ICN: 8112

Note: Privileged/Confidential information may be contained in this message and may be subject to legal privilege. Access to this e-mail by anyone other than the intended is unauthorised. If you are not the intended recipient (or responsible for delivery of the message to such person), you may not use, copy, distribute or deliver to anyone this message (or any part of its contents) or take any action in reliance on it. In such case, you should destroy this message, and notify us immediately. If you have received this email in error, please notify us immediately by e-mail or telephone and delete the e-mail from any computer. If you or your employer does not consent to internet e-mail messages of this kind, please notify us immediately. All reasonable precautions have been taken to ensure no viruses are present in this e-mail. As our company cannot accept responsibility for any loss or damage arising from the use of this e-mail or attachments we recommend that you subject these to your virus checking procedures prior to use. The views, opinions, conclusions and other informations expressed in this electronic mail are not given or endorsed by the company unless otherwise indicated by an authorized representative independent of this message.

From: Luke Gliganic [<mailto:itsupport@rpsgroup.com>]
Sent: Thursday, 16 January 2020 3:05 PM
To: luke.gliganic@rps.com.au
Subject: Liverpool Health and Academic Precinct: Aboriginal Cultural Heritage Assessment Report RAP review

Dear sir/madam,

**Liverpool Health
and Academic Precinct: Aboriginal Cultural Heritage Assessment Report RAP
review**

Thank you for your
continued involvement in the Liverpool Health and Academic Precinct

redevelopment project.

In accordance with Step 4.4 of the *Aboriginal cultural heritage consultation requirements for proponents* 2010, we seek your feedback on the draft Aboriginal Cultural Heritage Assessment Reports (ACHARs) prepared for this project. The draft ACHARs are being provided to all Registered Aboriginal Parties (RAPs) on this project.

Please find attached the draft ACHARs for the main works and for the multi-storey carpark for your review. Note that the Aboriginal Archaeological Assessment reports (Appendix C) is also included for your review.

Can you please provide any comments or concerns that you may have on the draft report by **COB on 13 February 2020**.

Looking forward to your feedback.

Cheers,

Luke

**Luke
Glignic**

Heritage
Consultant

RPS | Australia Asia Pacific

Level 13, 255 Pitt Street

Sydney NSW 2000, Australia

T +61 2 8099 3200 **F** +61 2 8099 3299

D +61 2 8099 3224 **M** +61 4 3919 3846

E luke.glignic@rpsgroup.com.au

Files attached to this message

Filename	Size	Checksum (SHA256)
PR143932 - Liverpool Hospital SSD1 - 2.0 - ACHAR combined.pdf	3.39 MB	684eda354543cce3b523d43fa1f7160eeca505fc4bbfe493f9317681d28a72ba
PR143932 - Liverpool Hospital SSD1 - 2.0 - AAA combined.pdf	7.08 MB	b13e5674212dc6651d7b9b43a2abc2b980c1042c7aafef60b272df42911b4214
PR143932 - Liverpool Hospital SSD2 - 2.0 - ACHAR combined.pdf	3.53 MB	7fb5031cd311dd4e1ec86f1b6ccc024eea6f53f68651ef53d9d17c449d4a037a
PR143932 - Liverpool Hospital SSD2 - 2.0 - AAA combined.pdf	5.49 MB	5e1f55afc7371bb091754a5e3cc68dfda766b030439dbf02176979b9b86a7b0e

Please click on the following link to download the attachments:

<https://filetransfer.rpsgroup.com/message/KhDDrAxp9kyzg9PPi0laI0>

This email or download link can be forwarded to anyone.

The attachments are available until: **Thursday, 13 February.**

Message ID: KhDDrAxp9kyzg9PPi0laI0

[Download Files](#)

This e-mail message and any attached file is the property of the sender and is sent in confidence to the addressee only.

Internet communications are not secure and RPS is not responsible for their abuse by third parties, any alteration or corruption in transmission or for any loss or damage caused by a virus or by any other means.

RPS Group Plc, company number: 208 7786 (England). Registered office: 20 Western Avenue Milton Park Abingdon Oxfordshire OX14 4SH.

RPS Group Plc web link: <http://www.rpsgroup.com>

From: [Glenda Chalker](#)
To: [Luke Gliganic](#)
Subject: RE: Liverpool Health and Academic Precinct: Aboriginal Cultural Heritage Assessment Report RAP review
Date: Monday, 20 January 2020 8:00:52 AM

CAUTION: This email originated from outside of RPS.

Dear Luke,
Can I please have this ACHAR in a hard copy please
Glenda Chalker

From: Luke Gliganic [mailto:itsupport@rpsgroup.com]
Sent: Thursday, 16 January 2020 3:05 PM
To: luke.gliganic@rps.com.au
Subject: Liverpool Health and Academic Precinct: Aboriginal Cultural Heritage Assessment Report RAP review

Dear sir/madam,

**Liverpool Health
and Academic Precinct: Aboriginal Cultural Heritage Assessment Report RAP
review**

Thank you for your
continued involvement in the Liverpool Health and Academic Precinct
redevelopment project.

In accordance with Step 4.4 of the *Aboriginal cultural heritage consultation requirements for proponents* 2010, we seek your feedback on
the draft Aboriginal Cultural Heritage Assessment Reports (ACHARs) prepared for
this project. The draft ACHARs are being provided to all Registered Aboriginal
Parties (RAPs) on this project.

Please find attached
the draft ACHARs for the main works and for the multi-storey carpark for your
review. Note that the Aboriginal Archaeological Assessment reports (Appendix C)
is also included for your review.

Can you please provide
any comments or concerns that you may have on the draft report by **COB on 13
February 2020**.

Looking forward to
your feedback.

Cheers,

Luke

**Luke
Glignanic**

Heritage
Consultant

RPS | Australia Asia Pacific

Level 13, 255 Pitt Street

Sydney NSW 2000, Australia

T +61 2 8099 3200 **F** +61 2 8099 3299

D +61 2 8099 3224 **M** +61 4 3919 3846

E luke.glignanic@rpsgroup.com.au

rpsgroup.com

Files attached to this message

Filename	Size	Checksum (SHA256)
PR143932 - Liverpool Hospital SSD1 - 2.0 - ACHAR combined.pdf	3.39 MB	684eda354543cce3b523d43fa1f7160eeca505fc4bbfe493f9317681d28a72ba
PR143932 - Liverpool Hospital SSD1 - 2.0 - AAA combined.pdf	7.08 MB	b13e5674212dc6651d7b9b43a2abc2b980c1042c7aafef60b272df42911b4214
PR143932 - Liverpool Hospital SSD2 - 2.0 - ACHAR combined.pdf	3.53 MB	7fb5031cd311dd4e1ec86f1b6ccc024eea6f53f68651ef53d9d17c449d4a037a
PR143932 - Liverpool Hospital SSD2 - 2.0 - AAA combined.pdf	5.49 MB	5e1f55afc7371bb091754a5e3cc68dfda766b030439dbf02176979b9b86a7b0e

Please click on the following link to download the attachments:

<https://filetransfer.rpsgroup.com/message/KhDDrAxp9kyzg9PPi0laI0>

This email or download link can be forwarded to anyone.

The attachments are available until: **Thursday, 13 February.**

Message ID: KhDDrAxp9kyzg9PPi0laI0

[Download Files](#)

This e-mail message and any attached file is the property of the sender and is sent in confidence to the addressee only.

Internet communications are not secure and RPS is not responsible for their abuse by third parties, any alteration or corruption in transmission or for any loss or damage caused by a virus or by any other means.

RPS Group Plc, company number: 208 7786 (England). Registered office: 20 Western Avenue Milton Park Abingdon Oxfordshire OX14 4SH.

RPS Group Plc web link: <http://www.rpsgroup.com>

From: [Luke Gliganic](#)
To: [Glenda Chalker](#)
Subject: RE: Liverpool Health and Academic Precinct: Aboriginal Cultural Heritage Assessment Report RAP review
Date: Monday, 20 January 2020 10:13:00 AM

Hi Glenda,

Of course.

I have two addresses for you from the OEH stakeholder list:

55 Nightingale Road, Pheasants Nest NSW 2574

And

99 Menangle Street, Picton NSW 2761

Would you like the ACHAR and appendix mailed to either of these addresses or a different one?

I'll send it as soon as you let me know.

All the best,

Luke

Luke Gliganic
Heritage Consultant
RPS | Australia Asia Pacific
T +61 2 8099 3200
E luke.gliganic@rpsgroup.com.au

From: Glenda Chalker <kgchalker@bigpond.com>
Sent: Monday, 20 January 2020 8:01 AM
To: Luke Gliganic <Luke.Gliganic@rpsgroup.com.au>
Subject: RE: Liverpool Health and Academic Precinct: Aboriginal Cultural Heritage Assessment Report RAP review

CAUTION: This email originated from outside of RPS.

Dear Luke,

Can I please have this ACHAR in a hard copy please

Glenda Chalker

From: Luke Gliganic [<mailto:itsupport@rpsgroup.com>]
Sent: Thursday, 16 January 2020 3:05 PM
To: luke.gliganic@rps.com.au
Subject: Liverpool Health and Academic Precinct: Aboriginal Cultural Heritage Assessment Report RAP review

Dear sir/madam,

**Liverpool Health
and Academic Precinct: Aboriginal Cultural Heritage Assessment Report RAP
review**

Thank you for your
continued involvement in the Liverpool Health and Academic Precinct
redevelopment project.

In accordance with Step 4.4 of the *Aboriginal cultural heritage consultation
requirements for proponents* 2010, we seek your feedback on

the draft Aboriginal Cultural Heritage Assessment Reports (ACHARs) prepared for this project. The draft ACHARs are being provided to all Registered Aboriginal Parties (RAPs) on this project.

Please find attached the draft ACHARs for the main works and for the multi-storey carpark for your review. Note that the Aboriginal Archaeological Assessment reports (Appendix C) is also included for your review.

Can you please provide any comments or concerns that you may have on the draft report by **COB on 13 February 2020**.

Looking forward to your feedback.

Cheers,

Luke

**Luke
Gliganic**

Heritage
Consultant

RPS | Australia Asia Pacific

Level 13, 255 Pitt Street

Sydney NSW 2000, Australia

T +61 2 8099 3200 **F** +61 2 8099 3299

D +61 2 8099 3224 **M** +61 4 3919 3846

E luke.gliganic@rpsgroup.com.au

rpsgroup.com

Files attached to this message

Filename Size

Checksum (SHA256)

PR143932 -
Liverpool
Hospital 3.39
SSD1 - 2.0 - MB 684eda354543cce3b523d43fa1f7160eeca505fc4bbfe493f9317681d28a72ba
ACHAR
combined.pdf

PR143932 -
Liverpool
Hospital 7.08
SSD1 - 2.0 - MB b13e5674212dc6651d7b9b43a2abc2b980c1042c7aafef60b272df42911b4214
AAA
combined.pdf

PR143932 -
Liverpool
Hospital 3.53
SSD2 - 2.0 - MB 7fb5031cd311dd4e1ec86f1b6ccc024eea6f53f68651ef53d9d17c449d4a037a
ACHAR
combined.pdf

PR143932 -
Liverpool
Hospital 5.49
SSD2 - 2.0 - MB 5e1f55afc7371bb091754a5e3cc68dfda766b030439dbf02176979b9b86a7b0e
AAA
combined.pdf

Please click on the following link to download the attachments:

<https://filetransfer.rpsgroup.com/message/KhDDrAxp9kyzg9PPi0laI0>

This email or download link can be forwarded to anyone.

The attachments are available until: **Thursday, 13 February.**

Message ID: KhDDrAxp9kyzg9PPi0laI0

[Download Files](#)

This e-mail message and any attached file is the property of the sender and is sent in confidence to the addressee only.

Internet communications are not secure and RPS is not responsible for their abuse by third parties, any alteration or corruption in transmission or for any loss or damage caused by a virus or by any other means.

RPS Group Plc, company number: 208 7786 (England). Registered office: 20 Western Avenue Milton Park Abingdon Oxfordshire OX14 4SH.

RPS Group Plc web link: <http://www.rpsgroup.com>

From: [Glenda Chalker](#)
To: [Luke Gliganic](#)
Subject: RE: Liverpool Health and Academic Precinct: Aboriginal Cultural Heritage Assessment Report RAP review
Date: Monday, 20 January 2020 11:57:28 AM

CAUTION: This email originated from outside of RPS.

Luke,
The address is 55 Nightingale Road,
Pheasants Nest
Glenda

From: Luke Gliganic [mailto:Luke.Gliganic@rpsgroup.com.au]
Sent: Monday, 20 January 2020 10:13 AM
To: Glenda Chalker
Subject: RE: Liverpool Health and Academic Precinct: Aboriginal Cultural Heritage Assessment Report RAP review

Hi Glenda,

Of course.

I have two addresses for you from the OEH stakeholder list:
55 Nightingale Road, Pheasants Nest NSW 2574
And
99 Menangle Street, Picton NSW 2761

Would you like the ACHAR and appendix mailed to either of these addresses or a different one?

I'll send it as soon as you let me know.

All the best,
Luke

Luke Gliganic
Heritage Consultant
RPS | Australia Asia Pacific
T +61 2 8099 3200
E luke.gliganic@rpsgroup.com.au

From: Glenda Chalker <kgchalker@bigpond.com>
Sent: Monday, 20 January 2020 8:01 AM
To: Luke Gliganic <Luke.Gliganic@rpsgroup.com.au>
Subject: RE: Liverpool Health and Academic Precinct: Aboriginal Cultural Heritage Assessment Report RAP review

CAUTION: This email originated from outside of RPS.

Dear Luke,
Can I please have this ACHAR in a hard copy please
Glenda Chalker

From: Luke Gliganic [mailto:itsupport@rpsgroup.com]
Sent: Thursday, 16 January 2020 3:05 PM
To: luke.gliganic@rps.com.au
Subject: Liverpool Health and Academic Precinct: Aboriginal Cultural Heritage Assessment Report RAP review

Dear sir/madam,

**Liverpool Health
and Academic Precinct: Aboriginal Cultural Heritage Assessment Report RAP
review**

Thank you for your
continued involvement in the Liverpool Health and Academic Precinct
redevelopment project.

In accordance with Step 4.4 of the *Aboriginal cultural heritage consultation
requirements for proponents* 2010, we seek your feedback on
the draft Aboriginal Cultural Heritage Assessment Reports (ACHARs) prepared for
this project. The draft ACHARs are being provided to all Registered Aboriginal
Parties (RAPs) on this project.

Please find attached
the draft ACHARs for the main works and for the multi-storey carpark for your
review. Note that the Aboriginal Archaeological Assessment reports (Appendix C)
is also included for your review.

Can you please provide
any comments or concerns that you may have on the draft report by **COB on 13
February 2020**.

Looking forward to
your feedback.

Cheers,

Luke

**Luke
Glignic**

Heritage
Consultant

RPS | Australia Asia Pacific

Level 13, 255 Pitt Street

Sydney NSW 2000, Australia

T +61 2 8099 3200 **F** +61 2 8099 3299

D +61 2 8099 3224 **M** +61 4 3919 3846

E luke.gliganic@rpsgroup.com.au

rpsgroup.com

Files attached to this message

Filename	Size	Checksum (SHA256)
PR143932 - Liverpool Hospital SSD1 - 2.0 - ACHAR combined.pdf	3.39 MB	684eda354543cce3b523d43fa1f7160eeca505fc4bbfe493f9317681d28a72ba
PR143932 - Liverpool Hospital SSD1 - 2.0 - AAA combined.pdf	7.08 MB	b13e5674212dc6651d7b9b43a2abc2b980c1042c7aaf60b272df42911b4214
PR143932 - Liverpool Hospital SSD2 - 2.0 - ACHAR combined.pdf	3.53 MB	7fb5031cd311dd4e1ec86f1b6ccc024eea6f53f68651ef53d9d17c449d4a037a
PR143932 - Liverpool Hospital SSD2 - 2.0 - AAA combined.pdf	5.49 MB	5e1f55afc7371bb091754a5e3cc68dfda766b030439dbf02176979b9b86a7b0e

Please click on the following link to download the attachments:

<https://filetransfer.rpsgroup.com/message/KhDDrAxp9kyzg9PPi0laI0>

This email or download link can be forwarded to anyone.

The attachments are available until: **Thursday, 13 February.**

Message ID: KhDDrAxp9kyzg9PPi0laI0

[Download Files](#)

This e-mail message and any attached file is the property of the sender and is sent in confidence to the addressee only.

Internet communications are not secure and RPS is not responsible for their abuse by third parties, any alteration or corruption in transmission or for any loss or damage caused by a virus or by any other means.

RPS Group Plc, company number: 208 7786 (England). Registered office: 20 Western Avenue Milton Park Abingdon Oxfordshire OX14 4SH.

RPS Group Plc web link: <http://www.rpsgroup.com>

This email and its attachments may contain confidential and/or privileged information and is for the sole use of the intended recipient(s). The contents of this email must not be disclosed to or used by or copied in any way by anyone other than the intended recipient(s). If you are not the intended recipient, any use, distribution or copying of the information contained in this email and its attachments is strictly prohibited. Confidentiality and/or privilege in the content of this email is not waived. If you have received this email in error, please email the sender by replying to this message and immediately delete and destroy any copies of this email and any attachments. Please note that neither RPS Consultants Pty Ltd, any subsidiary, related entity ('RPS') nor the sender accepts any responsibility for viruses and it is your responsibility to scan or otherwise check this email and any attachments. The views or opinions expressed are the author's own and may not reflect the views or opinions of RPS

From: [Luke Gliganic](#)
To: ["Glenda Chalker"](#)
Subject: RE: Liverpool Health and Academic Precinct: Aboriginal Cultural Heritage Assessment Report RAP review
Date: Monday, 20 January 2020 4:33:00 PM

Hi Glenda,

Great, thanks for that.

The reports are in the post. You should have them very soon.

Enclosed in the Express Post envelope are:

ACHAR – Liverpool hospital main works

AAA – Liverpool hospital main works arch report

ACHAR – Liverpool hospital multi-storey carpark

AAA – Liverpool hospital multi-storey carpark arch report

All the best,

Luke

Luke Gliganic

Heritage Consultant

RPS | Australia Asia Pacific

T +61 2 8099 3200

E luke.gliganic@rpsgroup.com.au

From: Glenda Chalker <kgchalker@bigpond.com>
Sent: Monday, 20 January 2020 11:57 AM
To: Luke Gliganic <Luke.Gliganic@rpsgroup.com.au>
Subject: RE: Liverpool Health and Academic Precinct: Aboriginal Cultural Heritage Assessment Report RAP review

CAUTION: This email originated from outside of RPS.

Luke,

The address is 55 Nightingale Road,

Pheasants Nest

Glenda

From: Luke Gliganic [<mailto:Luke.Gliganic@rpsgroup.com.au>]
Sent: Monday, 20 January 2020 10:13 AM
To: Glenda Chalker
Subject: RE: Liverpool Health and Academic Precinct: Aboriginal Cultural Heritage Assessment Report RAP review

Hi Glenda,

Of course.

I have two addresses for you from the OEH stakeholder list:

55 Nightingale Road, Pheasants Nest NSW 2574

And

99 Menangle Street, Picton NSW 2761

Would you like the ACHAR and appendix mailed to either of these addresses or a different one?

I'll send it as soon as you let me know.

All the best,
Luke

Luke Gliganic

Heritage Consultant
RPS | Australia Asia Pacific
T +61 2 8099 3200
E luke.gliganic@rpsgroup.com.au

From: Glenda Chalker <kgchalker@bigpond.com>
Sent: Monday, 20 January 2020 8:01 AM
To: Luke Gliganic <Luke.Gliganic@rpsgroup.com.au>
Subject: RE: Liverpool Health and Academic Precinct: Aboriginal Cultural Heritage Assessment Report RAP review

CAUTION: This email originated from outside of RPS.

Dear Luke,
Can I please have this ACHAR in a hard copy please
Glenda Chalker

From: Luke Gliganic [<mailto:itsupport@rpsgroup.com>]
Sent: Thursday, 16 January 2020 3:05 PM
To: luke.gliganic@rps.com.au
Subject: Liverpool Health and Academic Precinct: Aboriginal Cultural Heritage Assessment Report RAP review

Dear sir/madam,

**Liverpool Health
and Academic Precinct: Aboriginal Cultural Heritage Assessment Report RAP
review**

Thank you for your
continued involvement in the Liverpool Health and Academic Precinct
redevelopment project.

In accordance with Step 4.4 of the *Aboriginal cultural heritage consultation requirements for proponents* 2010, we seek your feedback on the draft Aboriginal Cultural Heritage Assessment Reports (ACHARs) prepared for this project. The draft ACHARs are being provided to all Registered Aboriginal Parties (RAPs) on this project.

Please find attached
the draft ACHARs for the main works and for the multi-storey carpark for your review. Note that the Aboriginal Archaeological Assessment reports (Appendix C) is also included for your review.

Can you please provide
any comments or concerns that you may have on the draft report by **COB on 13 February 2020**.

Looking forward to
your feedback.

Cheers,

Luke

**Luke
Gliganic**

Heritage
Consultant

RPS | Australia Asia Pacific

Level 13, 255 Pitt Street

Sydney NSW 2000, Australia

T +61 2 8099 3200 **F** +61 2 8099 3299

D +61 2 8099 3224 **M** +61 4 3919 3846

E luke.gliganic@rpsgroup.com.au

rpsgroup.com

Files attached to this message

Filename	Size	Checksum (SHA256)
PR143932 - Liverpool Hospital SSD1 - 2.0 - ACHAR combined.pdf	3.39 MB	684eda354543cce3b523d43fa1f7160eeca505fc4bbfe493f9317681d28a72ba
PR143932 - Liverpool Hospital SSD1 - 2.0 - AAA combined.pdf	7.08 MB	b13e5674212dc6651d7b9b43a2abc2b980c1042c7aafef60b272df42911b4214
PR143932 - Liverpool Hospital SSD2 - 2.0 - ACHAR combined.pdf	3.53 MB	7fb5031cd311dd4e1ec86f1b6ccc024eea6f53f68651ef53d9d17c449d4a037a

PR143932 -

Liverpool

Hospital 5.49

SSD2 - 2.0 - MB 5e1f55afc7371bb091754a5e3cc68dfda766b030439dbf02176979b9b86a7b0e

AAA

combined.pdf

Please click on the following link to download the attachments:

<https://filetransfer.rpsgroup.com/message/KhDDrAxp9kyzg9PPi0laI0>

This email or download link can be forwarded to anyone.

The attachments are available until: **Thursday, 13 February.**

Message ID: KhDDrAxp9kyzg9PPi0laI0

[Download Files](#)

This e-mail message and any attached file is the property of the sender and is sent in confidence to the addressee only.

Internet communications are not secure and RPS is not responsible for their abuse by third parties, any alteration or corruption in transmission or for any loss or damage caused by a virus or by any other means.

RPS Group Plc, company number: 208 7786 (England). Registered office: 20 Western Avenue Milton Park Abingdon Oxfordshire OX14 4SH.

RPS Group Plc web link: <http://www.rpsgroup.com>

This email and its attachments may contain confidential and/or privileged information and is for the sole use of the intended recipient(s). The contents of this email must not be disclosed to or used by or copied in any way by anyone other than the intended recipient(s). If you are not the intended recipient, any use, distribution or copying of the information contained in this email and its attachments is strictly prohibited. Confidentiality and/or privilege in the content of this email is not waived. If you have received this email in error, please email the sender by replying to this message and immediately delete and destroy any copies of this email and any attachments. Please note that neither RPS Consultants Pty Ltd, any subsidiary, related entity ('RPS') nor the sender accepts any responsibility for viruses and it is your responsibility to scan or otherwise check this email and any attachments. The views or opinions expressed are the author's own and may not reflect the views or opinions of RPS

From: justinecoplin@optusnet.com.au
To: [Luke Gliganic](#)
Subject: RE: Liverpool Health and Academic Precinct: Aboriginal Cultural Heritage Assessment Report RAP review
Date: Monday, 20 January 2020 1:54:27 PM

CAUTION: This email originated from outside of RPS.

Hi Luke
There is no attachment
Thanks
Justine

From: Luke Gliganic <itsupport@rpsgroup.com>
Sent: Thursday, 16 January 2020 3:05 PM
To: luke.gliganic@rps.com.au
Subject: Liverpool Health and Academic Precinct: Aboriginal Cultural Heritage Assessment Report RAP review

Dear sir/madam,

**Liverpool Health
and Academic Precinct: Aboriginal Cultural Heritage Assessment Report RAP
review**

Thank you for your
continued involvement in the Liverpool Health and Academic Precinct
redevelopment project.

In accordance with Step 4.4 of the *Aboriginal cultural heritage consultation requirements for proponents* 2010, we seek your feedback on the draft Aboriginal Cultural Heritage Assessment Reports (ACHARs) prepared for this project. The draft ACHARs are being provided to all Registered Aboriginal Parties (RAPs) on this project.

Please find attached
the draft ACHARs for the main works and for the multi-storey carpark for your review. Note that the Aboriginal Archaeological Assessment reports (Appendix C) is also included for your review.

Can you please provide
any comments or concerns that you may have on the draft report by **COB on 13 February 2020**.

Looking forward to
your feedback.

Cheers,

Luke

**Luke
Gliganic**

Heritage
Consultant

RPS | Australia Asia Pacific

Level 13, 255 Pitt Street

Sydney NSW 2000, Australia

T +61 2 8099 3200 **F** +61 2 8099 3299

D +61 2 8099 3224 **M** +61 4 3919 3846

E luke.gliganic@rpsgroup.com.au

rpsgroup.com

Files attached to this message

Filename	Size	Checksum (SHA256)
PR143932 - Liverpool Hospital SSD1 - 2.0 - ACHAR combined.pdf	3.39 MB	684eda354543cce3b523d43fa1f7160eeca505fc4bbfe493f9317681d28a72ba
PR143932 - Liverpool Hospital SSD1 - 2.0 - AAA combined.pdf	7.08 MB	b13e5674212dc6651d7b9b43a2abc2b980c1042c7aaf60b272df42911b4214
PR143932 - Liverpool Hospital SSD2 - 2.0 - ACHAR combined.pdf	3.53 MB	7fb5031cd311dd4e1ec86f1b6ccc024eea6f53f68651ef53d9d17c449d4a037a
PR143932 - Liverpool Hospital SSD2 - 2.0 - AAA combined.pdf	5.49 MB	5e1f55afc7371bb091754a5e3cc68dfda766b030439dbf02176979b9b86a7b0e

Please click on the following link to download the attachments:

<https://filetransfer.rpsgroup.com/message/KhDDrAxp9kyzg9PPi0laI0>

This email or download link can be forwarded to anyone.

The attachments are available until: **Thursday, 13 February.**

Message ID: KhDDrAxp9kyzg9PPi0laI0

[Download Files](#)

This e-mail message and any attached file is the property of the sender and is sent in confidence to the addressee only.

Internet communications are not secure and RPS is not responsible for their abuse by third parties, any alteration or corruption in transmission or for any loss or damage caused by a virus or by any other means.

RPS Group Plc, company number: 208 7786 (England). Registered office: 20 Western Avenue Milton Park Abingdon Oxfordshire OX14 4SH.

RPS Group Plc web link: <http://www.rpsgroup.com>

From: [Luke Gliganic](#)
To: justinecoplin@optusnet.com.au
Subject: RE: Liverpool Health and Academic Precinct: Aboriginal Cultural Heritage Assessment Report RAP review
Date: Monday, 20 January 2020 2:13:00 PM

Hi Justine,

Thanks for getting in touch.

The files were too big to attach to an email, so we are using our file transfer service. You can scroll down to the bottom of this email (or the previous one I'd sent) and click on the links (an example is shown circled in red in the image below).



Please let me know if you have trouble downloading them.

Cheers,
Luke

Luke Gliganic
Heritage Consultant
RPS | Australia Asia Pacific
T +61 2 8099 3200
E luke.gliganic@rpsgroup.com.au

From: justinecoplin@optusnet.com.au <justinecoplin@optusnet.com.au>
Sent: Monday, 20 January 2020 1:54 PM
To: Luke Gliganic <Luke.Gliganic@rpsgroup.com.au>
Subject: RE: Liverpool Health and Academic Precinct: Aboriginal Cultural Heritage Assessment Report RAP review

CAUTION: This email originated from outside of RPS.

Hi Luke
There is no attachment
Thanks
Justine

From: Luke Gliganic <itsupport@rpsgroup.com>
Sent: Thursday, 16 January 2020 3:05 PM
To: luke.gliganic@rps.com.au
Subject: Liverpool Health and Academic Precinct: Aboriginal Cultural Heritage Assessment Report RAP review

Dear sir/madam,

Liverpool Health

and Academic Precinct: Aboriginal Cultural Heritage Assessment Report RAP review

Thank you for your continued involvement in the Liverpool Health and Academic Precinct redevelopment project.

In accordance with Step 4.4 of the *Aboriginal cultural heritage consultation requirements for proponents* 2010, we seek your feedback on the draft Aboriginal Cultural Heritage Assessment Reports (ACHARs) prepared for this project. The draft ACHARs are being provided to all Registered Aboriginal Parties (RAPs) on this project.

Please find attached the draft ACHARs for the main works and for the multi-storey carpark for your review. Note that the Aboriginal Archaeological Assessment reports (Appendix C) is also included for your review.

Can you please provide any comments or concerns that you may have on the draft report by **COB on 13 February 2020**.

Looking forward to your feedback.

Cheers,

Luke

**Luke
Gliganic**

Heritage
Consultant

RPS | Australia Asia Pacific

Level 13, 255 Pitt Street

Sydney NSW 2000, Australia

T +61 2 8099 3200 **F** +61 2 8099 3299

D +61 2 8099 3224 **M** +61 4 3919 3846

E luke.gliganic@rpsgroup.com.au

rpsgroup.com

Files attached to this message

Filename	Size	Checksum (SHA256)
PR143932 - Liverpool Hospital SSD1 - 2.0 - ACHAR combined.pdf	3.39 MB	684eda354543cce3b523d43fa1f7160eeca505fc4bbfe493f9317681d28a72ba
PR143932 - Liverpool Hospital SSD1 - 2.0 - AAA combined.pdf	7.08 MB	b13e5674212dc6651d7b9b43a2abc2b980c1042c7aafee60b272df42911b4214
PR143932 - Liverpool Hospital SSD2 - 2.0 - ACHAR combined.pdf	3.53 MB	7fb5031cd311dd4e1ec86f1b6ccc024eea6f53f68651ef53d9d17c449d4a037a
PR143932 - Liverpool Hospital SSD2 - 2.0 - AAA combined.pdf	5.49 MB	5e1f55afc7371bb091754a5e3cc68dfda766b030439dbf02176979b9b86a7b0e

Please click on the following link to download the attachments:

<https://filetransfer.rpsgroup.com/message/KhDDrAxp9kyzg9PPi0laI0>

This email or download link can be forwarded to anyone.

The attachments are available until: **Thursday, 13 February.**

Message ID: KhDDrAxp9kyzg9PPi0laI0

[Download Files](#)

This e-mail message and any attached file is the property of the sender and is sent in confidence to the addressee only.

Internet communications are not secure and RPS is not responsible for their abuse by third parties, any alteration or corruption in transmission or for any loss or damage caused by a virus or by any other means.

RPS Group Plc, company number: 208 7786 (England). Registered office: 20 Western Avenue Milton Park Abingdon Oxfordshire OX14 4SH.

RPS Group Plc web link: <http://www.rpsgroup.com>

From: [philip.khan](#)
To: [Luke.Gliganic](#)
Subject: RE: Liverpool Health and Academic Precinct: Aboriginal Cultural Heritage Assessment Report RAP review
Date: Wednesday, 5 February 2020 5:11:52 PM

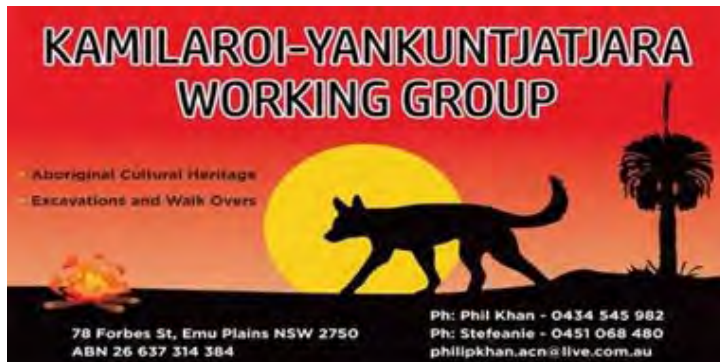
CAUTION: This email originated from outside of RPS.

Hi Luke,

Would you please be able to send me through the ACHA Report as it was not attached to this email.

Kind Regards

Phil Khan



Sent from [Mail](#) for Windows 10

From: [Luke Gliganic](#)
Sent: Thursday, 16 January 2020 3:04 PM
To: luke.gliganic@rps.com.au
Subject: Liverpool Health and Academic Precinct: Aboriginal Cultural Heritage Assessment Report RAP review

Dear sir/madam,

**Liverpool Health
and Academic Precinct: Aboriginal Cultural Heritage Assessment Report RAP
review**

Thank you for your
continued involvement in the Liverpool Health and Academic Precinct
redevelopment project.

In accordance with Step 4.4 of the *Aboriginal cultural heritage consultation requirements for proponents* 2010, we seek your feedback on the draft Aboriginal Cultural Heritage Assessment Reports (ACHARs) prepared for this project. The draft ACHARs are being provided to all Registered Aboriginal Parties (RAPs) on this project.

Please find attached
the draft ACHARs for the main works and for the multi-storey carpark for your review. Note that the Aboriginal Archaeological Assessment reports (Appendix C) is also included for your review.

Can you please provide
any comments or concerns that you may have on the draft report by **COB on 13
February 2020**.

Looking forward to
your feedback.

Cheers,

Luke

**Luke
Gliganic**

Heritage
Consultant

RPS | Australia Asia Pacific

Level 13, 255 Pitt Street

Sydney NSW 2000, Australia

T +61 2 8099 3200 **F** +61 2 8099 3299

D +61 2 8099 3224 **M** +61 4 3919 3846

E luke.gliganic@rpsgroup.com.au

rpsgroup.com

Files attached to this message

Filename	Size	Checksum (SHA256)
PR143932 - Liverpool Hospital SSD1 - 2.0 - ACHAR combined.pdf	3.39 MB	684eda354543cce3b523d43fa1f7160eeca505fc4bbfe493f9317681d28a72ba

PR143932 -

Liverpool

Hospital SSD1 7.08 MB b13e5674212dc6651d7b9b43a2abc2b980c1042c7aaf60b272df42911b4214

- 2.0 - AAA

combined.pdf

PR143932 -

Liverpool

Hospital SSD2 3.53 MB 7fb5031cd311dd4e1ec86f1b6ccc024eea6f53f68651ef53d9d17c449d4a037a

- 2.0 - ACHAR

combined.pdf

PR143932 -

Liverpool

Hospital SSD2 5.49 MB 5e1f55afc7371bb091754a5e3cc68dfda766b030439dbf02176979b9b86a7b0e

- 2.0 - AAA

combined.pdf

Please click on the following link to download the attachments:

<https://filetransfer.rpsgroup.com/message/KhDDrAxp9kyzg9PPi0laI0>

This email or download link can be forwarded to anyone.

The attachments are available until: **Thursday, 13 February.**

Message ID: KhDDrAxp9kyzg9PPi0laI0

[Download Files](#)

This e-mail message and any attached file is the property of the sender and is sent in confidence to the addressee only.

Internet communications are not secure and RPS is not responsible for their abuse by third parties, any alteration or corruption in transmission or for any loss or damage caused by a virus or by any other means.

RPS Group Plc, company number: 208 7786 (England). Registered office: 20 Western Avenue Milton Park Abingdon Oxfordshire OX14 4SH.

RPS Group Plc web link: <http://www.rpsgroup.com>

From: [Luke Gliganic](#)
To: [philip.khan](#)
Subject: RE: Liverpool Health and Academic Precinct: Aboriginal Cultural Heritage Assessment Report RAP review
Date: Wednesday, 5 February 2020 5:22:00 PM

Hi Phil,

Thanks for getting in touch.

The files are too big to send together as attachments to an email (all files come to 20 MB). We have shared them using our file transfer portal. You can access them by clicking the link in the original email, then downloading each report (there are four reports – 2 ACHARS and 2 archaeological assessments).

If you still cannot download the files please let me know and I can send them through one-by-one as attachments.

All the best,
Luke

Luke Gliganic
Heritage Consultant
RPS | Australia Asia Pacific
T +61 2 8099 3200
E luke.gliganic@rpsgroup.com.au

From: philip.khan <philipkhan.acn@live.com.au>
Sent: Wednesday, 5 February 2020 5:12 PM
To: Luke Gliganic <Luke.Gliganic@rpsgroup.com.au>
Subject: RE: Liverpool Health and Academic Precinct: Aboriginal Cultural Heritage Assessment Report RAP review

CAUTION: This email originated from outside of RPS.

Hi Luke,

Would you please be able to send me through the ACHA Report as it was not attached to this email.

Kind Regards
Phil Khan



Sent from [Mail](#) for Windows 10

From: [Luke Gliganic](#)

Sent: Thursday, 16 January 2020 3:04 PM

To: luke.gliganic@rps.com.au

Subject: Liverpool Health and Academic Precinct: Aboriginal Cultural Heritage Assessment Report RAP review

Dear sir/madam,

**Liverpool Health
and Academic Precinct: Aboriginal Cultural Heritage Assessment Report RAP
review**

Thank you for your continued involvement in the Liverpool Health and Academic Precinct redevelopment project.

In accordance with Step 4.4 of the *Aboriginal cultural heritage consultation requirements for proponents* 2010, we seek your feedback on the draft Aboriginal Cultural Heritage Assessment Reports (ACHARs) prepared for this project. The draft ACHARs are being provided to all Registered Aboriginal Parties (RAPs) on this project.

Please find attached the draft ACHARs for the main works and for the multi-storey carpark for your review. Note that the Aboriginal Archaeological Assessment reports (Appendix C) is also included for your review.

Can you please provide any comments or concerns that you may have on the draft report by **COB on 13 February 2020**.

Looking forward to your feedback.

Cheers,

Luke

**Luke
Gliganic**

Heritage
Consultant

RPS | Australia Asia Pacific

Level 13, 255 Pitt Street

Sydney NSW 2000, Australia

T +61 2 8099 3200 **F** +61 2 8099 3299

D +61 2 8099 3224 **M** +61 4 3919 3846

E luke.gliganic@rpsgroup.com.au

rpsgroup.com

Files attached to this message

Filename	Size	Checksum (SHA256)
PR143932 - Liverpool Hospital SSD1 - 2.0 - ACHAR combined.pdf	3.39 MB	684eda354543cce3b523d43fa1f7160eeca505fc4bbfe493f9317681d28a72ba
PR143932 - Liverpool Hospital SSD1 - 2.0 - AAA combined.pdf	7.08 MB	b13e5674212dc6651d7b9b43a2abc2b980c1042c7aaf60b272df42911b4214
PR143932 - Liverpool Hospital SSD2 - 2.0 - ACHAR combined.pdf	3.53 MB	7fb5031cd311dd4e1ec86f1b6ccc024eea6f53f68651ef53d9d17c449d4a037a
PR143932 - Liverpool Hospital SSD2 - 2.0 - AAA combined.pdf	5.49 MB	5e1f55afc7371bb091754a5e3cc68dfda766b030439dbf02176979b9b86a7b0e

Please click on the following link to download the attachments:
<https://filetransfer.rpsgroup.com/message/KhDDrAxp9kyzg9PPi0laI0>

This email or download link can be forwarded to anyone.

The attachments are available until: **Thursday, 13 February.**

Message ID: KhDDrAxp9kyzg9PPi0laI0

Download Files

This e-mail message and any attached file is the property of the sender and is sent in confidence to the addressee only.

Internet communications are not secure and RPS is not responsible for their abuse by third parties, any alteration or corruption in transmission or for any loss or damage caused by a virus or by any other means.

RPS Group Plc, company number: 208 7786 (England). Registered office: 20 Western Avenue Milton Park Abingdon Oxfordshire OX14 4SH.

RPS Group Plc web link: <http://www.rpsgroup.com>

Cubbitch Barta Native Title Claimants
Aboriginal Corporation
55 Nightingale Road,
PHEASANTS NEST. N.S.W. 2574
7th February, 2020.

RPS,
Level 13, 255 Pitt Street,
SYDNEY. N.S.W. 2000.

Dear Luke,

RE; LIVERPOOL HOSPITAL

Thank you for the opportunity of commenting on the DRAFT ACHAR for the development proposal at Liverpool Hospital.

Based upon the DRAFT ACHAR and the results of the site inspection, there are no constraints on the project proceeding as planned. I would however like to state that Aboriginal camp sites could still remain insitu, particularly within the older part of the Hospital, where there would have been less excavation works carried out back then, as to the way construction is today.

I fully agree with the recommendations that have been made in this report.

Yours faithfully,



Glenda Chalker

Phone/Fax 0246841129 0427218425

kgchalker@bigpond.com

Appendix C

Aboriginal Archaeological Assessment (AAA)

LIVERPOOL HEALTH AND ACADEMIC PRECINCT - INTEGRATED SERVICES BUILDING AND REFURBISHMENT OF THE CLINICAL SERVICES BUILDING

Aboriginal Archaeological Assessment

PR143932
Liverpool Health and
Academic Precinct
3.0
21 February 2020

REPORT

Document status

Version	Purpose of document	Authored by	Reviewed by	Approved by	Review date
1.0	Draft	L. Gliganic	G. Wright	G. Wright	16.12.2019
2.0	Draft for RAP review	L. Gliganic	G. Wright	G. Wright	16.01.2020
3.0	Final	L. Gliganic	S.Kennedy	S. Kennedy	21.02.2020

Approval for issue

S.Kennedy



21 February 2020

This report was prepared by RPS within the terms of RPS' engagement with its client and in direct response to a scope of services. This report is supplied for the sole and specific purpose for use by RPS' client. The report does not account for any changes relating the subject matter of the report, or any legislative or regulatory changes that have occurred since the report was produced and that may affect the report. RPS does not accept any responsibility or liability for loss whatsoever to any third party caused by, related to or arising out of any use or reliance on the report.

Prepared by:

RPS

Luke Gliganic

Heritage Consultant

Level 13, 255 Pitt Street
Sydney NSW 2000

T +61 2 8270 8300

E luke.gliganic@rpsgroup.com.au

Prepared for:

Johnstaff

Shamma Hasan

Project Manager

Level 5, 9 Castlereagh Street
Sydney, NSW, 2000

T +61 2 8256 0500

E shamma.hasan@johnstaff.com.au

Contents

Executive Summary.....	1
1 INTRODUCTION	3
1.1 Project Area.....	3
1.2 The Proposal	3
1.2.1 Integrated Services Building and refurbishment of the Clinical Services Building	3
1.2.2 Strategic need for the Project	4
1.3 Purpose and scope of this Aboriginal Archaeological Assessment.....	4
1.4 Consultation	5
1.5 Authorship	5
2 LEGISLATIVE CONTEXT	7
2.1 <i>National Parks and Wildlife Act 1974</i>	7
Notification of Aboriginal objects	7
Investigating and assessing Aboriginal cultural heritage	7
2.2 <i>Heritage Act 1977</i>	8
2.3 <i>Environmental Planning and Assessment Act 1979</i>	8
2.4 Aboriginal Land Rights Act 1983.....	8
2.5 Native Title Act 1993	8
3 LANDSCAPE CONTEXT	9
3.1.1 Geology.....	9
3.1.2 Soils	9
3.1.3 Climate	9
3.1.4 Flora	9
4 ABORIGINAL CULTURAL HERITAGE CONTEXT	10
4.1 Aboriginal cultural heritage context.....	10
4.2 Archaeological context	10
4.2.1 Regional archaeological context.....	10
4.2.2 Aboriginal Heritage Information Management System	11
4.2.3 Review of archaeological assessments in the local area	14
4.3 Archaeological predictive model	16
5 ARCHAEOLOGICAL SURVEY	17
5.1 Methodology.....	17
5.2 Results	17
5.2.1 Effective survey coverage.....	17
5.3 Observations	18
5.3.1 Survey Unit One.....	18
6 ANALYSIS AND DISCUSSION	23
6.1 Levels of disturbance	23
6.2 Analysis of archaeological potential	23
7 SIGNIFICANCE ASSESSMENT	24
7.1 Scientific significance assessment.....	24
7.2 Statement of significance	25
8 IMPACT ASSESSMENT	26
8.1 The Proposal	26
8.2 Impact assessment	26
9 MANAGEMENT AND MITIGATION MEASURES.....	27
9.1 Guiding principles.....	27
9.2 Mitigation measures	27

10	CONCLUSIONS AND RECOMMENDATIONS	28
10.1	Conclusions.....	28
10.2	Recommendations	28
11	REFERENCES	29

Tables

Table 4.1:	AHIMS sites near Project Area.....	12
Table 4.2:	Summary of extensive AHIMS search results	12
Table 5.1:	Effective coverage of survey units.....	17
Table 5.2:	Effective coverage of landforms	17
Table 7.1:	Archaeological significance criteria	24
Table 7.2:	Archaeological significance criteria	25

Plates

Plate 5.1	Hospital entrance at southwestern corner (RPS 2019).....	18
Plate 5.2	View along southern boundary of Project Area. Building is the Clinical Services Building (RPS 2019).....	19
Plate 5.3	View of carpark and northern boundary of Project Area in north eastern corner (RPS 2019).....	19
Plate 5.4	View along northern boundary of Project Area (RPS 2019)	20
Plate 5.5	Looking south from northern boundary looking into Project Area (RPS 2019)	20
Plate 5.6	View along western boundary of the Project Area showing entrance to basement carpark and landscaped grassy areas (RPS 2019)	21
Plate 5.7	Small landscaped area at hospital entrance (RPS 2019)	21

Figures

Figure 1.1:	Project Area.....	6
Figure 4.1:	AHIMS extensive search	13
Figure 5.1:	Survey units.....	22

Appendices

Appendix A	Concept plan	31
Appendix B	AHIMS	32

EXECUTIVE SUMMARY

RPS Australia East Pty Ltd (RPS) has been engaged by Johnstaff Pty Ltd (Johnstaff) to prepare an Aboriginal Archaeological Assessment (AAA) for Health Infrastructure (HI) for the proposed Liverpool Health and Academic Precinct redevelopment. The Project Area comprises the western half of Liverpool Hospital (Lot 501//DP1165217). The proponent intends to redevelop the hospital, including the construction and operation of a new Integrated Services Building and refurbishment of the Clinical Services Building.

The purpose of this AAA is to assess the potential for Aboriginal archaeology within the Project Area, to identify any Aboriginal archaeological sites within the Project Area and to provide recommendations for further investigation if required. This AAA has been prepared in response to the Secretary's Environmental Assessment Requirements (SEARs) received for the project, which is now moving towards submission of a State Significant Development (SSD) application. This report will be issued in support of the SSD application. An Aboriginal Heritage Impact Permit (AHIP) is not required for SSD projects.

RPS has prepared this report in accordance with the *Guide to Investigating, Assessing and Reporting on Aboriginal Cultural Heritage in NSW* (OEH [now DPIE] 2011), the *Code of Practice for Archaeological Investigation of Aboriginal Objects in New South Wales* (the Code of Practice) (DECCW [now DPIE] 2010) and the *Aboriginal Cultural Heritage Consultation Requirements for Proponents 2010* (the Consultation Requirements) (DECCW [now DPIE] 2010).

An archaeological survey of the Project Area was undertaken by RPS and a representative of the Gandangara Local Aboriginal Land Council (Gandangara LALC) on 25 November 2019. The survey determined that large portions of the Project Area are highly disturbed. No registered Aboriginal sites, unrecorded Aboriginal sites or areas of archaeological potential were identified by the background reporting or during the survey. No additional cultural heritage values were identified by Gandangara LALC.

This AAA has therefore been prepared as a requirement of the project SEARs, rather than in response to archaeological or cultural heritage values identified.

The following recommendations have been formulated with consideration of the Aboriginal cultural heritage values of the Project Area and the impact of the proposal. The recommendations have been prepared in accordance with the relevant legislation and with the Registered Aboriginal Parties (RAPs).

Recommendation 1

As no Aboriginal objects or areas of archaeological potential have been identified, the Proposal may proceed with caution.

Recommendation 2

Personnel, contractors and subcontractors should be made aware of all statutory obligations for Aboriginal cultural heritage under the *National Parks and Wildlife Act 1974* and the *Heritage Act 1977*. This should be in the form of an induction prior to the commencement of work.

Recommendation 3

If changes are made to the Proposal and work activities that are assessed in this report, further archaeological and / or cultural heritage assessment may be required.

Recommendation 4

If suspected Aboriginal objects are identified during construction, work should cease immediately and the area cordoned off. Health Infrastructure must be notified, and an archaeologist engaged to assess and record the Aboriginal object, and formulate an archaeological or cultural heritage management plan. The plan must be implemented prior to work recommencing.

Recommendation 5

In the unlikely event that human remains are identified within the Project Area, all work in the area must cease and the area cordoned off. The proponent must contact the local police. If the remains are thought to be Aboriginal, Heritage NSW must be notified on Enviroline (131 555). If Heritage NSW confirm that the remains are Aboriginal, a management plan developed in consultation with the local Aboriginal community. Work must not recommence without approval from Heritage NSW.

1 INTRODUCTION

Johnstaff Pty Ltd (Johnstaff) engaged RPS Australia East Pty Ltd (RPS) to conduct an Aboriginal Archaeological Assessment (AAA) for Health Infrastructure for the Liverpool Health and Academic Precinct (LHAP). The proponent proposes to redevelop Liverpool Hospital, including the construction and operation of a new Integrated Services Building and refurbishment of the Clinical Services Building (the Proposal).

The purpose of this AAA is to identify any Aboriginal objects and places within the LHAP and to assess the potential impact of the proposed project. This AAA responds to the Secretary's Environmental Assessment Requirements (SEARs) for the project.

1.1 Project Area

Liverpool Hospital is located within the Liverpool Central Business District (CBD), on the corner of Elizabeth Street and Goulburn Street, Liverpool. The hospital includes land east and west of the Main Southern Line, which forms an eastern and western campus. The Proposal is located in the western part of the western campus and is described as Lot 501 in Deposited Plan (DP) 1165217 (Figure 1.1).

1.2 The Proposal

Liverpool Hospital is the district hospital for local catchment areas of Liverpool and Fairfield and is a tertiary referral hospital for all of South Western Sydney Local Health District (SWSLHD). In June 2018, the NSW Government announced \$740 million of funding for the development of a health, research and academic precinct in Liverpool. The redevelopment would increase the inpatient numbers, in addition to expanding tertiary and quaternary services.

1.2.1 Integrated Services Building and refurbishment of the Clinical Services Building

This SSD relates to the construction and operation of a new Integrated Services Building and refurbishment of the Clinical Services Building. The Proposal includes:

- Construction and operation of a new Integrated Services Building to provide:
 - Expanded Emergency department
 - New Women's and Paediatric services
 - New Cancer Treatment Centre
 - New support services including Pathology, Satellite Medical Imaging and Pharmacy
 - New education and teaching spaces
 - New basement loading facilities
- Refurbishment of existing buildings to provide:
 - Expansion and reconfiguration of the existing Emergency department
 - Reconfiguration of existing Operating Theatres and Same Day Surgery
 - Caroline Chisholm Building repurposed for office accommodation
- New Hospital entry and drop off
- Link over Campbell Street to the Ingham Institute

- Construction of new internal access roads
- Expansion of Ambulance bays on Elizabeth Street
- Creation of a shared zone on Campbell Street
- Tree removal
- Landscaping
- Utilities services and amplification work
- Civil work.

Concept architectural plans are included as Appendix A.

1.2.2 Strategic need for the Project

Liverpool Hospital accommodates 713 inpatients and provides a range of tertiary and quaternary services. The Liverpool Hospital Clinical Services Plan 2031 (CSP) predicts substantial growth in services demand to 2025-26 as a result of population increase, major infrastructure in South Western Sydney and the poor health status of people within the LGA and surrounding areas. This would result in demand beyond the Hospital's existing infrastructure capacities. Population projections indicate that the population of SWSLHD will increase from 966,450 people in 2016 to 1.285 million people in 2031. This is an increase of 33% over the 15 years. The Liverpool LGA population will grow by 41 per cent by 2031, with an additional 86,950 people, a growth rate twice that expected for the rest of NSW.

The Hospital also plays a role as a tertiary referral hospital for all of SWSLHD. It provides critical care for rural retrieval catchments and regional catchment for quaternary services. Therefore, there is an urgent need to upgrade and expand the existing service offering of Liverpool Hospital to better meet the needs of the South Western District and to address future demand for services from a growing and ageing population.

The CSP identifies models of care to best meet the increasing and dynamic health care needs of the community. These new models of care would be provided via integrated services that allow staff efficiencies and optimal patient flows. The redevelopment of the Hospital to deliver an integrated services facility along with an expansion of facilities will ensure the Hospital can increase the inpatient bed numbers, as well as expanding tertiary and quaternary services.

1.3 Purpose and scope of this Aboriginal Archaeological Assessment

The purpose of this AAA is:

- to identify any Aboriginal objects and places in Project Area
- to assess the Aboriginal archaeological potential of the Project Area
- to assess the archaeological significance of identified Aboriginal objects and places within the Project Area
- to assess the impact of the Proposal
- to aim to minimise the identified impact of the Proposal
- to develop appropriate management and mitigation recommendations as required.

The report has been prepared in accordance with the *Code of Practice for the Archaeological Investigation of Aboriginal Objects in NSW* (the Code) (DECCW 2010) and the *Guide to Investigating, Assessing and Reporting on Aboriginal Cultural Heritage in NSW* (OEH 2011) (the Guide).

1.4 Consultation

RPS completed consultation in accordance with the *Aboriginal cultural heritage consultation requirements for proponents 2010* (DECCW 2010). The purpose of consultation is to assess the cultural significance of Aboriginal objects, places and landscapes, and to develop and implement appropriate management and mitigation outcomes in consultation with the local Aboriginal community. Section 3 of the Aboriginal cultural heritage assessment report documents all consultation in relation to the Proposal.

1.5 Authorship

RPS Heritage Consultant Luke Gliganic prepared this AAA. RPS Senior Heritage Consultant Georgia Wright reviewed this AAA. A final review was undertaken by Susan Kennedy (Heritage Manager – Sydney). Luke Gliganic and Darren Duncan (the Culture and Heritage Officer from Gandangara LALC) completed the archaeological survey.



Figure 1.1: Project Area

LOCATION:	Path: N:\Projects\Conics_Sydney\PR 143932 - Liverpool Hospital\GISMXD\Aboriginal\AHIMS_Luke2.mxd	DATUM: GDA94
LIVERPOOL, NSW		PROJECTION: MGA Zone 56
PURPOSE: HERITAGE		Data Sources:
Technician: Luke.Gliganic	Date: 6/12/2019	RPS
	VERSION (PLAN BY):	Land and Property 2015

2 LEGISLATIVE CONTEXT

The legislative context of the Proposal is provided solely for information purposes for the client, it should not be interpreted as legal advice. The following information is applicable to the Proposal and should not be reinterpreted or applied to other projects. RPS will not be liable for any actions taken by any person, body or group as a result of this information. RPS recommends that specific legal advice be obtained from a qualified legal practitioner prior to any action being taken as a result of the information below.

Aboriginal cultural heritage (objects and places) in NSW is protected under *the National Parks and Wildlife Act 1974* (NPW Act). The NPW Act provides protection for Aboriginal cultural heritage irrespective of the level of archaeological or cultural heritage significance or land tenure. In some cases, Aboriginal cultural heritage is also protected under the *Heritage Act 1977*. The *Environmental Planning and Assessment Act 1977* and other environmental planning instruments trigger the requirement for the investigation and assessment of Aboriginal cultural heritage as part of the development approval process.

2.1 *National Parks and Wildlife Act 1974*

The NPW Act protects Aboriginal heritage (objects and places) within NSW. Protection of Aboriginal heritage is outlined in Section 86 of the NPW Act, as follows:

- “A person must not harm or desecrate an object that the person knows is an Aboriginal object” s86(1)
- “A person must not harm an Aboriginal object” s86(2)
- “A person must not harm or desecrate an Aboriginal place” s86(4)

Under the NPW Act, it is an offence to harm an Aboriginal object or place. The penalties for knowingly harming an Aboriginal object (s86[1]) and / or an Aboriginal place (s86[4]) are up to \$550,000 for an individual and / or imprisonment of two years; and in the case of a corporation the penalty is up to \$1.1 million. The penalty for a strict liability offence (s86[2]) is up to \$110,000 for an individual and \$220,000 for a corporation.

Harm under the NPW Act is defined as any act that; destroys, defaces or damages the object, moves the object from the land on which it has been situated, causes or permits the object to be harmed. However, it is a defence from prosecution if the proponent can demonstrate 1) that harm was authorised under Section 90 of the NPW Act i.e. an AHIP (and that the works complied with the requirements of the AHIP) or 2) that the proponent exercised due diligence in respect to Aboriginal heritage. The ‘due diligence’ defence (s87[2]), states that if a person or company has exercised due diligence to ascertain that no Aboriginal object was likely to be harmed as a result of the activities proposed for the study area then liability from prosecution under the NPW Act will be removed or mitigated if it later transpired that an Aboriginal object was harmed. If any Aboriginal objects are identified during the activity, then works should cease in that area and DPIE notified (DECCW 2010:13). The due diligence defence does not authorise continuing harm.

Please note that as a result of amendments made to the NPW Act in 2010, a permit under section 90 is now the only AHIP available. However, should the project be determined to be an SSD an AHIP would not be required.

Notification of Aboriginal objects

Under Section 89A of the NPW Act Aboriginal objects must be reported to Heritage NSW within a reasonable time, unless it already recorded on the Aboriginal Heritage Information Management System (AHIMS). Penalties of \$11,000 for an individual and \$22,000 for a corporation may apply for each object not reported.

Investigating and assessing Aboriginal cultural heritage

There are a number of procedural publications governing archaeological practice in NSW. The publications relevant to the investigation and assessment of Aboriginal cultural heritage include the Code, the Guide and the *Aboriginal cultural heritage requirements for proponents 2010* (DECCW 2010).

The *Aboriginal cultural heritage consultation requirements for proponents 2010* (DECCW 2010) codifies a process for consultation with Aboriginal people who hold cultural knowledge relevant to determining the significance of Aboriginal cultural heritage. The requirements are consistent with the NPW Act and seek, *inter alia*, to conserve Aboriginal objects and places of significance to Aboriginal people. Consultation is therefore a fundamental part of the Aboriginal cultural heritage assessment process.

2.2 Heritage Act 1977

The *Heritage Act 1977* provides protection for environmental heritage including historic places, structures, relics, moveable objects and landscapes of significance. The *Heritage Act 1977* also affords protection to Aboriginal places of State heritage significance included on the State Heritage Register (SHR) or subject to an Interim Heritage Order.

No Aboriginal places included on the SHR or subject to an Interim Heritage Order are located within the Project Area.

2.3 Environmental Planning and Assessment Act 1979

The *Environmental Planning and Assessment Act 1979* (EP&A Act) regulates a system of environmental planning and assessment for NSW. Land use planning requires that environmental impacts are considered, including the impact on Aboriginal cultural heritage. The NPW Act therefore provides protection for Aboriginal objects or places, and the EPA Act ensures an assessment of Aboriginal cultural heritage as part of the planning and approvals process. Should the project be determined to be SSD, the Proposal would be assessed under Part 4, Division 4.1 of the EP&A Act, which establishes an assessment and approval process for SSD projects.

2.4 Aboriginal Land Rights Act 1983

The purpose of this legislation is to provide land rights for Aboriginal people within NSW and to establish Local Aboriginal Land Councils (LALCs). The land able to be claimed by LALCs on behalf of Aboriginal people is certain Crown land that (s36):

- (a) Is able to be lawfully sold, leased, reserved or dedicated.
- (b) Is not lawfully used or occupied.
- (c) Will not, or not likely, in the opinion of the Crown Lands minister, be needed for residential purposes.
- (d) Will not, or not likely, be needed for public purposes.
- (e) Does not comprise land under determination by a claim for Native Title.
- (f) Is not the subject of an approved determination under Native Title.

Claims for land are by application to the Office of the Registrar.

2.5 Native Title Act 1993

The Commonwealth Government enacted the *Native Title Act 1993* (Native Title Act) to formally recognise and protect Native Title rights in Australia following the decision of the High Court of Australia in *Mabo and Ors v Queensland [No 2]* (1992) 175 CLR 1 (Mabo).

The Native Title Act establishes processes to determine where Native Title exists, how future activity affecting upon Native Title may be undertaken, and to provide compensation where Native Title is impaired or extinguished. The Native Title Act provides Aboriginal people who hold Native Title rights and interests, or who have made a Native Title claim, the right to be consulted and in some cases, the participate in decisions about activities proposed to be undertaken on the land.

There are no Native Title claims within the Project Area.

3 LANDSCAPE CONTEXT

This section provides the landscape context for the Project Area. The landscape context assists in determining the archaeological potential of the Project Area, including the potential for the formation and preservation of the archaeological record, and the potential for archaeological material to occur according to landform, location and distance from resources and places of cultural activity or significance. The Project Area is located along the Georges River, which runs approximately 96 kilometres from its headwaters near Appin and Campbelltown to Botany Bay. The river drains a catchment area of ~920 square kilometres, with its largest tributary being the Woronora River which joins the Georges approximately 10 kilometres from its mouth in Botany Bay. The Project Area is located along the Georges River, ~35 kilometres upstream from Botany Bay, where the river is transitioning from fresh to estuarine waters.

3.1.1 Geology

The Project Area is located in the Cumberland subregion of the Sydney Basin Bioregion. The Sydney Basin is part of a major basin system stretching from the Bowen Basin in Queensland that formed during late Carboniferous and early Permian extension. The deepest units overlying Lachlan Fold Belt are early Permian marine shales, siltstones and sandstones and volcanic basalts, breccias and tuffs. Overlying this are Permian coal measures, then Triassic quartz-rich sandstones deposited by extremely large braided rivers whose headwaters lay hundreds to thousands of kilometres to the south- and northwest. Subsequent Jurassic lower-energy fluvial and shallow marine sedimentation caps the sequence (NPWS, 2003).

The local geology of the Project Area is characterised by Triassic Wianamatta Group, which includes Bringelly Shales over Minchinbury Sandstone and Ashfield Shales and predominantly consists of shale, claystone and fine to medium-grained lithic sandstone. Cenozoic incision into the rocks of the Wianamatta Group by the Georges River created a gorge and floodplain, which has filled with Pliocene alluvial clayey quartzose sands and clays and Holocene alluvium (Clark and Jones, 1991). The Project Area is on an outer bank of a bend of the Georges River. The Project Area mainly lies on Triassic Wianamatta Group shales, but the eastern most portion includes Pliocene alluvial sands and clays.

3.1.2 Soils

The Project Area falls within the Blacktown (bt) soil landscape (Hazelton et al., 2010). The Blacktown soil is a residual soil landscape which is characterised by gently undulating rises on Wianamatta Group shales, local relief up to 30 metres with broad rounded crests and ridges, and gently inclined slopes usually >5 per cent. The soils are often shallow to moderately deep (>100 centimetres) texture-contrast soils with red and brown podzolic soils on crests grading to yellow podzolic soils on lower slopes and in drainage lines. Soils have seasonal waterlogging, localised water erosion, localised surface movement potential, and low fertility (Hazelton et al., 2010).

3.1.3 Climate

The climate of the Project Area can be defined as humid subtropical (Köppen climate classification: Cfa), being characterised by hot and humid summers and cool to mild winters. Monthly mean maximum temperatures range between 17.3°C (June) and 28.2°C (January), with mean minimum temperatures between 4.7°C (June) and 17.7°C (February). The mean annual rainfall (1962-2001) is 856 mm, with higher average rainfall between January and March and lower average rainfall between July and September (BOM, Liverpool climate statistics).

3.1.4 Flora

The native flora of the region is characterised by the local microregions. Shale hills are characterised by grey box, forest red gum, narrow-leaved ironbark woodland with some spotted gum. Alluvial sands and gravels contain prevalent hard-leaved scribbly gum, rough-barked apple and old man banksia. The river flats flora comprises broad-leaved apple, cabbage gum and forest red gum with abundant swamp oak, while lagoons and swamps contain tall spike rush and juncus with Parramatta red gum (NPSW, 2003). Given the Project Area is located on a shale raised landform nearby a low-gradient portion of the George's River, the native vegetation would have been a melange of each microregion.

4 ABORIGINAL CULTURAL HERITAGE CONTEXT

This section summarises the archaeological and ethnographic information to provide a context for Aboriginal cultural heritage in the Project Area. This informs the assessment of the archaeological significance of the Project Area.

4.1 Aboriginal cultural heritage context

Before contact, Aboriginal society in the Sydney region was organised into clans. In general, resource and land ownership centred on the clan, members of which are descended from a common ancestor or ancestors. Each clan comprised several extended families, each associated with a given land area. Each clan had a particular estate; the name of each clan derived its name by adding the suffix “-gal” to the estate’s name. According to historical sources, the Project Area lands were known as Cabro, and the clan that resided in the Project Area was known as the Cabro-gal (Attenbrow, 2010).

Language is a higher level of Aboriginal social organisation. Language groups which included several clans – though it must be noted that the relationship between clans and language groups is poorly understood. Multiple languages were spoken within the Sydney area, and it is likely that almost all Aboriginal people were multi-lingual (Attenbrow, 2010).

The Georges River formed a boundary between two language groups: the Darug to the north and the Dharawal to the south. The location of the Project Area on the north bank of the Georges River suggests that it formed part of the Darug language group (Irish, 2009). This is attested to by Mathews and Everitt (1900: 262) state “The Dharook dialect... was spoken at Campbelltown, Liverpool, Camden, Penrith, and possibly as far east as Sydney.” Likewise, Hill (1892) states “Those on the southern shore of the George’s River, across to the coast and the south shore of Botany Bay, spoke a different language to those at Liverpool.”

Seasonal movements depended on the resources available, including water, flora and fauna resources. Clans or local groups occupied a core area, and moved between resources, or for ceremonial purposes, trade and governance. The availability of resources was noted to influence the diets and subsistence patterns employed by groups as they moved through the landscape. Collins described people living away from the coast as subsisting “on such animals as they can catch... being compelled to climb the trees after honey and the small animals which resort to them, such as the flying squirrel and possum” (Collins in Attenbrow 2010:71). One food source that is noted for the Cabrogal is the toredo worms, from which the clan derived its name: the name “Cabro” is derived from the teredo worms, called “cah-bro” by Aboriginal people, that were collected for consumption along the banks of the Georges River and estuaries.

The ample water sources provided an attractive landscape for land mammals, which as described above, Aboriginal people hunted or trapped. The hunting of tree-dwelling mammals such as possums and gliders appears to have been common, with kangaroo and wallaby targeted less often, perhaps only when clans came together for ceremonial purposes (Brook and Kohen 1991:3-4).

Aboriginal people relied on an extensive knowledge of the land and its resources. Initial relations between Aboriginal people and colonists were often recorded as amicable. However, as colonial populations increasingly claimed Aboriginal lands and resources, tensions and violence escalated. By 1794, violent encounters were frequent and extensive, and the Aboriginal population of the greater Sydney region was severely reduced.

4.2 Archaeological context

4.2.1 Regional archaeological context

Archaeological and genetic evidence indicates that Aboriginal people have been in Australia for at least 50,000 years (Clarkson et al., 2016; Tobler et al., 2017), adapting to climatic and environmental changes and moving across every part of the continent (Hiscock, 2008). Despite this, evidence for Aboriginal presence in the Sydney region during the Pleistocene is sparse. The earliest potential evidence for human presence in the region is a series of core tools recovered from alluvial gravels at the base of the Cranebrook Terrace on the Nepean River dated to between 41.9 ± 5.5 and 50.4 ± 8.9 ka using thermoluminescence dating (Stockton and Holland, 1974; Nanson et al., 1987; Stockton and Nanson, 2004). However, given the small number of

artefacts and the relatively high probability that 'core tools' could occur naturally in alluvial gravel deposits, this site has been treated with scepticism (e.g., Mulvaney and Kamminga, 1999). Williams et al. (2014) report an open occupation site in north-west Sydney with a reported continuous occupation sequence from 36,000 years ago, however the luminescence-based chronology of these massive, pedoturbation-prone sands was generated using large aliquots, thereby obscuring possible inaccuracies due to mixed sediments (see Gliganic et al., 2016).

There is a more robust Terminal Pleistocene and Early Holocene record of human presence in the wider Sydney region from places such as Shaws Creek, Loggers Shelter, Bass Point midden, Second Ponds Creek, Darling Mills SF2 rockshelter, and MR/1 (Kohen et al. 1984; Attenbrow 1981, 2004; Hughes and Djohadze, 1980 Attenbrow 1993; Moore 1981; McDonald et al., 1994). These places record Aboriginal occupation at a time when sea levels were rising, following the sea-level minimum associated with the last glacial maximum (~21,000 to ~18,000 years ago). Most places across the Sydney Basin, however, date to the last ~5,000 years corresponding to a continent-wide population increase during the mid- and late-Holocene (Williams, 2013, 2018).

Thousands of Aboriginal objects have been recorded in the greater Sydney region, for the most part through the work of consulting projects associated with development. Different types of evidence of Aboriginal land use has been recorded in the region, including open artefact scatters, shell middens, rock shelters (sometimes associated with middens, occupation, and/or art), rock engravings, rock paintings, grinding grooves, burial sites, scarred trees, and quarries (stone and ochre). However, by far, the most common type of archaeological evidence on the Cumberland Plain is stone artefacts. Smith (1989) recorded a total of 386 sites, most of which were open artefact scatters, and concluded that proximity to water and raw materials were the strongest factors that dictated location and artefact density, while other factors such as topography, vegetation, and soil type had little influence.

Later work incorporated test excavations in addition to surface surveys. This work showed that the archaeological record is more complex, with high potential for sub-surface archaeological resources, even where none are visible on the surface. This was conclusively demonstrated by the work of Jo McDonald, particularly in the Rouse Hill Development Area (RHDA), an area on the Cumberland Plain approximately 25 kilometres north of the Project Area. This work is summarised in McDonald (2005) and White and McDonald (2010). They conducted extensive dispersed test and open area excavations across the RHDA, thus allowing a systematic comparison of artefact distribution with various geographic and geomorphic features over a wide area. White and McDonald (2010) show that stream order and landform were correlated with artefact distribution and density. Higher artefact densities and more continuous artefact distributions tend to be observed in association with waterways with higher stream orders (Fourth order). Likewise, terraces and lower slopes yield more artefacts than upper slopes. Lower slopes near larger streams with north and northeast facing aspects also showed higher artefact densities. The distance from water was also shown to correlate with artefact density, with higher densities occurring 51-100 metres from fourth order streams and 0-50 metres from second order streams. Proximity to water was corroborated by Kohen (1997), who recorded over 50 Aboriginal objects in the Penrith area including artefact scatters, grinding grooves, and rock shelters. Kohen (1997) observed that Aboriginal objects are more likely to occur adjacent to rivers and creeks.

4.2.2 Aboriginal Heritage Information Management System

An extensive search of the Aboriginal Heritage Information Management System (AHIMS) database was conducted by Veronica Norman on 24 June 2019. The search parameters were as follows:

AHIMS ID: 374115
Datum: GDA Zone 56
Easting: 307073– 310534,
Northings: 6243210– 6246575
Buffer: 50 m
Number of Aboriginal sites: 6

The search captured an area wider than the Project Area in order to provide context for nature of archaeological evidence in the local landscape. An expanded AHIMS search area also accounts for known errors in the AHIMS system (Aboriginal object locations may be in error of up to 200 metres due to the discrepancies in coordinate systems used in the past). It is important to note that the location and nature of Aboriginal objects

is considered culturally sensitive material. Should this report be made public, all information regarding the location and nature of Aboriginal objects should be removed.

The extensive search identified **six registered Aboriginal objects within the searched area**. There are **no registered Aboriginal objects located within the Project Area** or within 500 metres of the Project Area.

The closest registered Aboriginal objects is AHIMS # 45-5-2540 (Liverpool Weir ocs1), which is located approximately 800 metres to the south of the Project Area.

The AHIMS extensive search results are summarised in Table 4.1, Table 4.2, and Figure 4.1.

Table 4.1: AHIMS sites near Project Area

AHIMS ID	Name	Features	Approximate distance from Project Area
45-5-2912	Brickmakers Creek	Artefact: 8	900 metres NW
45-5-2540	Liverpool Weir ocs1	Open Camp Site, Artefact	800 metres SSW
45-5-3428	CC 1	Artefact: 27	1600 metres NNE
45-5-3629	Collingwood Park (CW 1)	Potential Archaeological Deposit (PAD), Artefact	1950 metres SW
45-5-5192	Shell Midden OPTRd	Shell: 1	1500 metres E
45-5-3271	CC1	Potential Archaeological Deposit (PAD), Artefact	1500 metres NNE

Table 4.2: Summary of extensive AHIMS search results

Type	Frequency	Percentage
Artefact	3	50
Shell	1	17
Artefact, Potential Archaeological Deposit (PAD)	2	33
TOTAL	6	100



Figure 1.1: Project Area

LOCATION:	Path: N:\Projects\Conics_Sydney\PR 143932 - Liverpool Hospital\GISMXD\Aboriginal\AHIMS_Luke2.mxd	DATUM: GDA94
LIVERPOOL, NSW		PROJECTION: MGA Zone 56
PURPOSE: HERITAGE		Data Sources:
Technician: Luke.Gliganic	Date: 6/12/2019	RPS
	VERSION (PLAN BY):	Land and Property 2015

4.2.3 Review of archaeological assessments in the local area

4.2.3.1 The Project Area

There have been **no archaeological assessments** in the Project Area.

4.2.3.2 Near the Project Area

Central West Archaeological and Heritage Services (2002). An Aboriginal Archaeological Study of the Proposed Hoxton Park Partial Sewerage Transfer Via Liverpool Submain

Central West Archaeological and Heritage Services conducted an Aboriginal Archaeological Study and survey along sections of proposed pipeline work associated with the Hoxton Park Release Area to Liverpool Sewage Treatment Plant.

Central West Archaeological and Heritage Services surveyed the proposed route over two days, along with a member of the Gandangara LALC and Sydney Water. The area was found to be generally highly disturbed, passing through areas of disturbed creek banks, alluvial floodplains, and adjacent plains, predominantly within highly disturbed road corridors and within areas of dense development. No Aboriginal objects were identified during the survey within the study areas.

Large portions of the survey area occurred on landforms that would generally be assessed as having a high archaeological sensitivity such as alluvial floodplains. However, given the highly flood-prone nature and the highly disturbed state of the survey area, most of these areas were assessed as having a low likelihood of containing intact archaeological deposits.

Total Earth Care (2008). Aboriginal Cultural Heritage and Archaeological Assessment – Collingwood and Discovery Parks, Liverpool

Total Earth Care conducted an Aboriginal Cultural Heritage and Archaeological Assessment for Collingwood and Discovery Parks, in Liverpool, NSW, as a proposed development to subdivide Collingwood Park into two lots – one being for residential subdivision with the balance of the site remaining as public open space.

The area had been assessed in 1997 (JMCHM 1997). JMCHM recorded a bifacially ground edge hatchet head within the area assessed in 1997, though the location of the hatchet head was not recorded on the AHIMS. The 1997 assessment recommended that the archaeological potential for the study area was low due to the high level of disturbance, but that undisturbed deposits may be protected under Collingwood House itself.

During the detailed survey in 2008, Total Earth Care found no Aboriginal cultural heritage material. Topsoil in most of the entire study area was observed to be heavily disturbed by existing development and roads associated with Collingwood House, heavy landscaping associated with the previous use as a golf course, and landscaping including apparent shaping and excavation for stormwater drainage.

Total Earth Care identified only one part of the study area with significant archaeological potential. This is based on Aboriginal people being likely to have targeted the area as a resting place with commanding regional views. This area is quite narrowly defined between a slope with little archaeological potential and areas of heavy disturbance. It is unclear to what extent the area of archaeological potential would contain intact archaeological deposit and total Earth Care recommended archaeological testing prior to disturbance.

The Aboriginal community involved in the study expressed a wish that the hatchet head and areas of archaeological potential be registered as Aboriginal object. It was registered as “CW1” and bounded by the area of potential identified in the study, the underfloor deposits of Collingwood House (following McDonald’s 1997 recommendation) and the grounds of the house where the hatchet head was found.

Paul Irish (2009). Aboriginal Cultural Heritage Assessment Report, Lot 446 in DP48658, Park Road, Liverpool, NSW

Paul Irish conducted an Aboriginal Cultural Heritage Assessment for Lot 445 in DP48658 at Park Road in Liverpool NSW, land that was being considered for possible development as a community facility for the local Aboriginal community.

The assessment included a survey of the subject land, examining all areas of exposed ground to locate, record, assess any archaeological evidence for past Aboriginal land use, and assess potential archaeological sensitivity of the subject land. The survey identified a high degree of disturbance by past land use. No Aboriginal objects or areas of archaeological potential were observed during the survey.

The assessment concluded that no archaeological evidence of past Aboriginal land use was observed during the survey, nor were any areas thought to retain subsurface Aboriginal archaeological potential. The survey recorded high levels of disturbance throughout the subject land, including quite significant modification of areas from the channelling of the adjacent creek. No topsoil was identified that would indicate archaeological potential.

Artefact Heritage Services (2011). Light Horse Park, Liverpool, Aboriginal Heritage Due Diligence Assessment and Statement of Heritage Impacts for non-Indigenous heritage for the proposed route of electricity feeder lines

In 2011 Artefact Heritage Services undertook a due diligence assessment of Aboriginal heritage for a proposed electricity feeder line within Light Horse Park, Liverpool. Research indicated that Light Horse Park had been subject to a high level of disturbance. The area had been intensively cultivated and had been used as a former municipal landfill. Artefact concluded, therefore, that it was unlikely that any archaeological deposits would remain within the zone of impact of the proposed development. This conclusion was supported by a survey, which identified no Aboriginal objects. Artefact observed high levels of ground disturbance and landform modification including Landscaping and construction of storm water and other infrastructure that would have impacted on any archaeological deposit.

Due to the high level of disturbance, combined with the lack of Aboriginal archaeological objects located in the area, Artefact concluded that the potential for Aboriginal objects within the area assessed was low.

Comber Consultants (2019). Liverpool Boys' and Girls' High Schools, Aboriginal Archaeological Assessment

Comber Consultants was engaged to provide an Aboriginal Archaeological Assessment for the Liverpool Boys' and Girls' High Schools. This study area is the lot directly north of the Project Area.

Based on a review of previous archaeological assessments for the Cumberland Plains, Comber developed a predictive model for the study area and the Cumberland Plain more broadly. The study area was about 310 metres north of the closest point of the Georges River and was surrounded with several first and second order creeks located between one and three kilometres away. The Georges River would have been an important source of aquatic resources, whilst the creeks would have provided freshwater and freshwater resources. Nearby resources would have included quantities of fresh water, aquatic life and plant foods as well as bark for manufacturing containers, shields and canoes and plants for manufacturing twine. The manufacturing process would have necessitated the use of stone tools which may also have needed to be modified. The predictive modelling indicated that camps would have been located close to the water source or on ridgelines overlooking a water source. The assessment concluded that the study area, being on a low area close to the river and former wetlands, could be expected to contain evidence of past Aboriginal land use in the form of open artefact scatters, scarred trees and isolated artefacts. However, as the study area had been cleared and modified for the construction of the school and associated facilities, scarred trees were therefore unlikely, although Comber concluded that artefact scatters and isolated artefacts could exist within the study area.

The survey of the study area identified a low area close to the river and former wetlands with the potential to contain medium to high densities of Aboriginal objects.

Comber recommended that consultation with the Aboriginal community and archaeological testing to determine if Aboriginal objects are located within the study area. This recommendation was based on the results of predictive modelling, which indicated the potential for the study area to contain Aboriginal objects.

4.3 Archaeological predictive model

The purpose of this predictive model is to provide an indication of the Aboriginal objects likely to occur within the Project Area. It draws on the review of the existing information from the regional and local archaeological context and from the landscape context. The predictive model informed the approach to the archaeological survey and to the assessment of the archaeological significance.

There are a number of factors that influence Aboriginal occupation of an area. These include essential subsistence resources such as food (flora and fauna) and fresh water, and secondary resources such as raw stone materials, wood and bark, animal skins and reeds for basket weaving, string, clothing and similar. Landscape features such as ridges, flat elevated areas, rock shelters and similar, may have also influenced Aboriginal occupation of an area. In addition, cultural activities may have also occurred at certain locations in the landscape; for example, corroborees and initiation sites.

The following predictions have been made on the basis of the landscape context, available ethnographic observations of Aboriginal people in the region, archaeological studies, as well as, analysis of information recorded on the AHIMS.

- Artefacts are found in most landforms and contexts. A review of previous archaeological assessments near the Project Area suggests that low density artefact scatters and isolated artefacts are the most likely type of Aboriginal object likely to be encountered within the Project Area and in the wider landscape.
- Due to the developed nature of the Project Area, the potential for scarred trees is low.
- Due to the developed nature of the Project Area, the potential for burials to be located within the Project Area is low.

5 ARCHAEOLOGICAL SURVEY

In accordance with the Code of Practice, the aims of an archaeological survey are twofold. The first aim of an archaeological survey is to record all (or a representative sample of all) material traces of Aboriginal land use visible on the ground surface or as landscape features. The second aim is to assess subsurface archaeological potential.

An archaeological survey was undertaken on 25 November 2019 by Luke Gliganic (RPS Heritage Consultant), Darren Duncan (Gandangara LALC Culture and Heritage Officer), Justin Morgan (Johnstaff), and John Sadek (LHAP redevelopment team). Nathan Jones (Director of Aboriginal Health, SWSLHD) also attended. The survey was conducted in accordance with the Code.

5.1 Methodology

Due to the developed nature of the Project Area, a sample survey was undertaken. Exposure in the Project Area was limited due to the developed nature of the LHAP. The vast majority (approximately 95 per cent) of ground surface in the Project Area is paved surfaces or buildings. The remaining approximately 5 per cent of the Project Area is exposed surfaces, including landscaped areas between access roads and buildings. Visibility of the exposed areas was impeded by vegetation, including grass, bushes and trees.

In accordance with the Code, the sample survey targeted all landform types within the Project Area. Given the flat, developed nature of the Project Area, only one survey unit was defined based on the landform. The survey unit was covered on foot as a transect. Areas of exposure were targeted for stone artefacts and other traces of Aboriginal occupation. A handheld non-differential GPS was used to track the survey and to record the locations of features within the Project Area including disturbed areas. Topographic and aerial information was used to inform the survey. A photographic record was kept of the survey of the Project Area, with representative photographs of landforms and disturbances.

5.2 Results

5.2.1 Effective survey coverage

The survey covered all survey units comprising all landform contexts present within the Project Area (Figure 5.1). Calculating effective coverage provides a means to describe the proportion of the Project Area in which it is possible to assess the presence or absence of the archaeological material. It is the total survey area multiplied by the percentage of ground surface visibility and exposure within the survey unit, expressed as a percentage for the whole unit. The effective survey coverage is summarised in Table 5.1 and Table 5.2.

Table 5.1: Effective coverage of survey units

Unit	Landform	Area (m ²)	Visibility (per cent)	Exposure (per cent)	Effective coverage area (m ²)	Effective coverage (per cent)
Survey Unit 1	Flat landform	46,280	5%	10%	231.4	1%

Table 5.2: Effective coverage of landforms

Landform	Landform area (m ²)	Effective coverage area	Effective coverage of landform (per cent)	AHIMS sites	Number of Aboriginal objects
Flat landform	46,280	231.4	1%	0	0

5.3 Observations

5.3.1 Survey Unit One

Survey Unit One consisted of the entire Project Area, which comprises the western part of Liverpool Hospital. Visibility was low, approximately 5 per cent, across Survey Unit One due to extensive development, including sealed surfaces such as roads and buildings, some with basements (Plate 5.1 to Plate 5.6). The visible areas were landscaped areas of grass and gardens with low exposures (~10 per cent) due to ground cover and other vegetation (Plate 5.4 to Plate 5.7).

No Aboriginal objects or areas of archaeological potential were identified within Survey Unit One.

Plate 5.1 Hospital entrance at southwestern corner (RPS 2019)



Plate 5.2 View along southern boundary of Project Area. Building is the Clinical Services Building (RPS 2019)



Plate 5.3 View of carpark and northern boundary of Project Area in north eastern corner (RPS 2019)



Plate 5.4 View along northern boundary of Project Area (RPS 2019)



Plate 5.5 Looking south from northern boundary looking into Project Area (RPS 2019)



Plate 5.6 View along western boundary of the Project Area showing entrance to basement carpark and landscaped grassy areas (RPS 2019)



Plate 5.7 Small landscaped area at hospital entrance (RPS 2019)





6 ANALYSIS AND DISCUSSION

6.1 Levels of disturbance

The background research and archaeological survey conducted for this assessment identified extremely high levels of disturbance across the entire Project Area. Disturbance is related to the construction and landscaping of the LHAP including the construction of the hospital and its associated infrastructure.

6.2 Analysis of archaeological potential

Aboriginal archaeological potential is assessed based on the nature and level of ground disturbance in an area, and the Aboriginal archaeological sensitivity of an area, including consideration of the landscape and wider archaeological context. In addition, the nature and density of surface artefacts informs the assessment of Aboriginal archaeological potential.

The entirety of the Project Area has been subject to extensive ground surface disturbance related to the construction of Liverpool Hospital. As of 2018, extensive subsurface disturbance in the form of basements and subsurface service infrastructure is located across approximately 45 per cent of the Project Area. Based on the level of ground disturbance, the Aboriginal archaeological potential of the Project Area is assessed as low.

7 SIGNIFICANCE ASSESSMENT

In accordance with the Code of Practice and *the Burra Charter: the Australia ICOMOS Charter for Places of Cultural Significance* (Australia ICOMOS 2013) (the Burra Charter), this section assesses the archaeological significance of the Project Area. This section considers the archaeological significance of the Project Area only. Scientific (archaeological) value refers to the importance of a landscape, area, place or object because of its rarity, representativeness and the extent to which it may contribute to further understanding and information. Scientific value is assessed using criteria such as research potential, representativeness, rarity and education potential. The degree to which an area meets the criteria is assessed as low, moderate, high or very high.

- Research potential: Does the evidence suggest any potential to contribute to an understanding of the area and/or region and/or state's natural and cultural history?
- Representativeness: How much variability (outside and/or inside the subject area) exists, what is already conserved, how connectivity is there?
- Rarity: Is the subject area important in demonstrating a distinctive way of life, custom, process, land use, function or design no longer practiced. Is it in danger of being lost or of exceptional interest?
- Education potential: Does the subject area contain evidence of teaching or evidence with teaching potential?

7.1 Scientific significance assessment

Archaeological value refers to the importance of a landscape, area, place or object based on its rarity, representativeness, and the extent to which it may contribute to further understanding and information about past Aboriginal occupation (OEH 2011:9).

The assessment of scientific or archaeological value (and subsequently, significance) is used to develop appropriate management and mitigation recommendations. Criteria for archaeological significance have been developed in accordance with the principles of the Code. The following archaeological significance criteria have been used: rarity, representativeness, research potential and education potential. These are defined in Table 7.1.

Table 7.1: Archaeological significance criteria

Criteria	Description
Rarity	Is the subject area important in demonstrating a distinctive way of life, custom, process, land-use, function or design no longer practiced? Is it in danger of being lost or of exceptional interest?
Representativeness	How much variability (outside and / or inside the subject area) exists, what is already conserved, how much connectivity is there?
Research potential	Is the subject area important in demonstrating a distinctive way of life, custom, process, land-use function or design no longer practised? Is it in danger of being lost or of exceptional interest?
Education potential	Does the subject area contain teaching sites or sites that may have teaching potential?

No registered Aboriginal objects or areas of archaeological potential have been identified in the Project Area. The archaeological significance is summarised in Table 7.2.

During the RAP review period, it was noted by one RAP that, while they fully supported the recommendations made in this ACHAR, that Aboriginal camp sites could still remain in situ, particularly within the older part of the Hospital.

Table 7.2: Archaeological significance criteria

Criteria	Assessment	
Rarity	The Project Area is characteristic of the Cumberland Plains region with development having occurred over much of the Project Area. The Project Area demonstrates a high level of ground disturbance. No Aboriginal objects have been identified within the Project Area.	Nil – low
Representativeness	The Project Area is representative of a part of the wider archaeological landscape, however in isolation it is not considered to be representative of areas of archaeological potential within the wider landscape.	Nil – low
Research potential	The Project Area demonstrates a high level of ground disturbance. No registered Aboriginal objects are located within the Project Area and it is unlikely that any Aboriginal objects would be identified. Therefore, it is unlikely that the Project Area would offer opportunities for research.	Nil – low
Education potential	As no Aboriginal objects have been identified within the Project Area it is considered to have nil to low educational potential.	Nil – low

7.2 Statement of significance

No registered Aboriginal objects or areas of Aboriginal archaeological potential have been identified within the Project Area. The Project Area is assessed to be of nil to low archaeological value.

8 IMPACT ASSESSMENT

This section provides an assessment of the Proposal in relation to Aboriginal cultural heritage. Conservation of Aboriginal objects and areas of archaeological sensitivity is the preferred outcome for Aboriginal cultural heritage management.

8.1 The Proposal

The Proposal are part of an SSD applications that relates to the construction and operation of a new Integrated Services Building and refurbishment of the Clinical Services Building. The Proposal includes:

- Construction and operation of a new Integrated Services Building to provide:
 - Expanded Emergency department
 - New Women's and Paediatric services
 - New Cancer Treatment Centre
 - New support services including Pathology, Satellite Medical Imaging and Pharmacy
 - New education and teaching spaces
 - New basement loading facilities
- Refurbishment of existing buildings to provide:
 - Expansion and reconfiguration of the existing Emergency department
 - Reconfiguration of existing Operating Theatres and Same Day Surgery
 - Caroline Chisholm Building repurposed for office accommodation
- New Hospital entry and drop off
- Link over Campbell Street to the Ingham Institute
- Construction of new internal access roads
- Expansion of Ambulance bays on Elizabeth Street
- Creation of a shared zone on Campbell Street
- Tree removal
- Landscaping
- Utilities services and amplification work
- Civil work.

8.2 Impact assessment

As no Aboriginal objects or areas of archaeological have been identified within the Project Area, it is assessed that the Proposal would not impact on Aboriginal cultural heritage.

The Ecologically Sustainable Development Principles are considered and discussed in detail in Section 8.2.1 of the Aboriginal Cultural Heritage Assessment Report.

9 MANAGEMENT AND MITIGATION MEASURES

9.1 Guiding principles

The overall guiding principle for cultural heritage management is that where possible Aboriginal objects should be conserved. If conservation is not practicable, measures should be taken to mitigate against impacts to Aboriginal objects.

The nature of the mitigation measures recommended is based on the assessed significance of the Aboriginal objects and is informed by the cultural significance provided by the Aboriginal community through consultation. Mitigation measures vary depending on the assessment of archaeological significance and are based on the significance criteria discussed in Section 7. In general, the significance of an Aboriginal object would influence the recommended conservation outcomes and appropriate mitigation measures, on the following basis:

- Low archaeological significance: Conservation where possible.
- Moderate archaeological significance: Conservation where possible. If conservation is not practicable, salvage excavations or similar mechanisms determined in consultation with the Aboriginal community may be necessary.
- High archaeological significance: Conservation as a priority. Only if all practicable alternatives have been exhausted would impacts be considered justified. Comprehensive salvage excavations may be necessary.

There are no registered Aboriginal objects located within the Project Area. The archaeological survey undertaken of the Project Area with a representative of Gandangara LALC did not identify any new Aboriginal objects or areas of archaeological potential or cultural significance. Therefore, the Project Area has been assessed as having nil to low archaeological significance.

9.2 Mitigation measures

The Project Area has been assessed as demonstrating low scientific significance. The Project Area is not considered to have the potential to contribute to regional questions regarding Aboriginal land use of the Cumberland Plain in the past. No further archaeological assessment is required.

Section 10 provides recommendations in the event that changes are made to the proposed scope of work assessed in this report, or in the unlikely event of unexpected Aboriginal objects.

10 CONCLUSIONS AND RECOMMENDATIONS

10.1 Conclusions

This report has considered the landscape and archaeological context of the Project Area, the archaeological significance of the Project Area and the potential impact of the Proposal.

- There are no registered Aboriginal objects located within the Project Area.
- The archaeological survey identified a high level of disturbance across the Project Area.
- Due to the high level of ground disturbance within the Project Area, the Aboriginal archaeological potential of the Project Area is assessed as nil - low.

10.2 Recommendations

Recommendation 1

As no Aboriginal objects or areas of archaeological potential have been identified, the Proposal may proceed with caution.

Recommendation 2

Personnel, contractors and subcontractors should be made aware of all statutory obligations for Aboriginal cultural heritage under the *National Parks and Wildlife Act 1974* and the *Heritage Act 1977*. This should be in the form of an induction prior to the commencement of work.

Recommendation 3

If changes are made to the Proposal and work activities that are assessed in this report, further archaeological and / or cultural heritage assessment may be required.

Recommendation 4

If suspected Aboriginal objects are identified during construction, work should cease immediately and the area cordoned off. Health Infrastructure must be notified, and an archaeologist engaged to assess and record the Aboriginal object, and formulate an archaeological or cultural heritage management plan. The plan must be implemented prior to work recommencing.

Recommendation 5

In the unlikely event that human remains are identified within the Project Area, all work in the area must cease and the area cordoned off. The proponent must contact the local police. If the remains are thought to be Aboriginal, Heritage NSW must be notified on Enviroline (131 555). If Heritage NSW confirm that the remains are Aboriginal, a management plan developed in consultation with the local Aboriginal community. Work must not recommence without approval from Heritage NSW.

11 REFERENCES

- Artefact Heritage Services (2011). Light Horse Park, Liverpool, Aboriginal Heritage Due Diligence Assessment and Statement of Heritage Impacts for non-Indigenous heritage for the proposed route of electricity feeder lines. Report to Endeavour Energy
- Attenbrow, V. (2010) Sydney Aboriginal past: investigating the archaeological and historical records. UNSW Press, Sydney.
- Attenbrow, V. 2004 *What's Changing: Population Size or Land-Use Patterns? The Archaeology of Upper Mangrove Creek, Sydney Basin. Terra Australis 21*. Canberra: Pandanus Books, Research School of Pacific and Asian Studies, Australian National University.
- Attenbrow, V., 1981. Mangrove Creek Dam Salvage Excavation Project. 2 vols. Unpublished report to NSW National Parks and Wildlife Service on behalf of NSW Department of Public Works.
- Attenbrow, V., 1993. Preliminary Report on 1993 Excavations at Balmoral Beach 2. Port Jackson Archaeological Project — Stage II. Unpublished report for NSW National Parks and Wildlife Service, Sydney, and Australian Institute of Aboriginal and Torres Strait Islander Studies, Canberra.
- BOM, Liverpool climate statistics. http://www.bom.gov.au/climate/averages/tables/cw_067035_All.shtml
- Central West Archaeological and Heritage Services (2002). An Aboriginal Archaeological Study of the Proposed Hoxton Park Partial Sewerage Transfer Via Liverpool Submain. Report to Robynne Mills Archaeological and Heritage Services and Sydney Water
- Clark, N.R., Jones, D.C. (1991) Penrith 1:100,000 Geological Sheet 9030. New South Wales Geological Survey, Sydney
- Clarkson, C., Jacobs, Z., Marwick, B., *et al.*, 2017. Human occupation of northern Australia by 65,000 years ago. *Nature* 547, 306-310.
- Comber Consultants (2019). Liverpool Boys' and Girls' High Schools, Aboriginal Archaeological Assessment. Report to Department of Education, School Infrastructure NSW
- Gliganic, L.A., Cohen, T.J., Slack, M., Feathers, J.K., 2016. Sediment mixing in aeolian sandsheets identified and quantified using single-grain optically stimulated luminescence. *Quaternary Geochronology* 32, 53-66.
- Hazelton, P., Bannerman, S., Tille, P. (2010) Soil Landscape of the Penrith 1:100,000 Sheet Report.
- Hill, R., (1892). Notes on the Aborigines of New South Wales. Attached to Fraser, J. *The Aborigines of New South Wales*, pp 1-2. Authority of the NSW Commissioners for the World's Columbian Exposition, Chicago, 1893.
- Hughes, P., Djohadze, V., 1980. Radiocarbon dates from archaeological sites on the south coast of New South Wales and the use of depth/ age curves. *Occasional Papers in Prehistory* 1. Department of Prehistory, Australian National University: Canberra.
- Kohen, J.L., Stockton, E.D., Williams, M.A.J., *et al.*, 1984. Shaws Creek KII Rockshelter: a prehistoric occupation site in the Blue Mountains piedmont, eastern New South Wales. *Archaeology in Oceania* 19, 57–73.
- Macquarie, L., (1810/1811). *Journal of a Tour of Governor Macquarie's first Inspection of the Interior of the Colony* 6 November 1810 – 15 January 1811. Mitchell Library, Sydney, ML Ref: A778 pp.1-45.

Mathews, R.H., Everitt, M.M, (1900). The organisation, language and initiation ceremonies of the Aborigines of the south-east coast of N.S. Wales. *Journal and Proceedings of the Royal Society of NSW* 34, 262-281.

McDonald, J., Rich, E., Barton, H., 1994. The Rouse Hill Infrastructure Project (Stage 1) on the Cumberland Plain, western Sydney. In M. Sullivan, S. Brockwell and A. Webb (eds), *Archaeology in the North: Proceedings of the 1993 Australian Archaeological Association Conference*, pp.259-293. Darwin: North Australia Research Unit, Australia National University.

Moore, D. R., 1981. Results of an archaeological survey of the Hunter River Valley, New South Wales, Australia. Part II: Problems of the Lower Hunter and contacts with the Hawkesbury Valley. *Records of the Australian Museum* 33(9): 388–442.

Mulvaney, J., Kamminga, J., 1999. *Prehistory of Australia*. Washington, D.C.: Smithsonian Institution Press.

Nanson, G.C., Young, R.A.W., Stockton, E.D., (1987). Chronology and palaeoenvironment of the Cranebrook Terrace (near Sydney) containing artefacts more than 40,000 years old. *Archaeology in Oceania* 22, 72-78.

NPWS (2003) The bioregions of New South Wales, their biodiversity, conservation and history.

Paul Irish (2009). Aboriginal Cultural Heritage Assessment Report, Lot 446 in DP48658, Park Road, Liverpool, NSW. Report to Arben management P/L on behalf of Gandangara Local Aboriginal Land Council

Smith, L.-J., (1989). Liverpool release areas Archaeological site survey and planning study. Report to the NSW National Parks and Wildlife Service.

Stockton, E.D., Holland, W.N., (1974). Cultural sites and their environment in the Blue Mountains. *Archaeology and Physical Anthropology in Oceania* 9, 36-65.

Stockton, E.D., Nanson, G.C., (2004). Cranebrook Terrace revisited. *Archaeology in Oceania* 39, 59-61.

Thorp, W, 1993, Archaeological Assessment, Moore Hall site, Liverpool District Hospital. Report prepared for Capworks Management Pty Ltd and the South Western Sydney Area Health Service.

Tobler, R., Rohrlach, A., Soubrier, J., *et. al.*, 2017. Aboriginal mitogenomes reveal 50,000 years of regionalism in Australia. *Nature* 544, 180-184.

Total Earth Care (2008). Aboriginal Cultural Heritage and Archaeological Assessment – Collingwood and Discovery Parks, Liverpool. Report to Liverpool City Council

Williams, A.N., Atkinson, F., Lau, M., Toms, P.S., 2014. Glacial cryptic refuge in south-east Australia: human occupation and mobility from 36 000 years ago in the Sydney Basin, New South Wales. *Journal of Quaternary Science* 29, 735–748

Williams, A.N., Ulm, S., Cook, A.R., Langley, M.C., Collard, M. (2013). Human refugia in Australia during the Last Glacial Maximum and Terminal Pleistocene: a geospatial analysis of the 25-12 ka Australian archaeological record. *Journal of Archaeological Science* 40, 4612-4625.

Appendix A Concept plan

28 October 2019

Mr Jim Betts
Secretary
Department of Planning, Industry and Environment
320 Pitt Street
Sydney, NSW, 2000

Dear Mr Betts

RE: LIVERPOOL HOSPITAL – INTEGRATED SERVICES BUILDING AND REFURBISHMENT WORKS REQUEST FOR SECRETARY’S ENVIRONMENTAL ASSESSMENT REQUIREMENTS

This request is made on behalf of Health Infrastructure NSW (HI) as the proponent for the proposed construction and operation of an Integrated Services Building and refurbishment of the existing Clinical Services Building at Liverpool Hospital. As the proposal is for the purposes of a Health Services Facility that has a capital investment value in excess of \$30 million, in accordance with Schedule 1 of *State Environmental Planning Policy (State and Regional Development) 2011* it is State Significant Development for the purposes of the *Environmental Planning and Assessment Act 1979* (EP&A Act).

The purpose of this letter is to request Secretary’s Environmental Assessment Requirements (SEARs) in accordance with section 5.15 of the EP&A Act for the preparation of an Environmental Impact Statement (EIS) for the proposed development. To support this request, outlined below is an overview of the proposed development, the statutory context, and the key likely environmental and planning issues associated with the proposal.

Concept Architectural Plans have been prepared by Fitzpatrick and Partners and are included at **Attachment A**.

1.0 Background

Liverpool Hospital is the district hospital for the local catchments of Liverpool and Fairfield and is a tertiary referral hospital for all of South Western Sydney Local Health District (SWSLHD). Within NSW, Liverpool Hospital has the highest number of emergency department presentations, is one of seven major trauma units in NSW for adults and one of three adult Brain Injury Rehabilitation Units in Sydney. It has tertiary affiliations with the University of NSW, University of Wollongong and Western Sydney University, and also provides practical education programs for medical practitioners, nurses and other health professionals.

In June 2018, the NSW Government announced \$740 million of funding for the development of a world class health, research and academic precinct in Liverpool. The redevelopment will increase the inpatient bed numbers, as well as expanding tertiary and quaternary services.

1.1 Hospital Infrastructure Works

A range of infrastructure improvement works are occurring across the broader Hospital campus under a separate application via Part 5 of the EP&A Act and as Complying Development under *State Environmental Planning Policy (Infrastructure) 2007* (ISEPP). The infrastructure improvement works are required to ensure the ongoing operation of the Hospital and are separate to the subject SSD works, and include:

- Demolition of buildings;
- Installation and augmentation of services;
- Alterations and additions to health service facilities;
- Tree removal;
- Realignment of internal roads;
- Relocation of short stay car parking; and
- Landscaping.

1.2 Multi-storey Car Park

The construction and operation of a multi-storey car park is proposed at Liverpool Hospital and will be the subject of a separate SSD application. The new car park will service the current and future parking demands for Liverpool Hospital.

2.0 The Site

2.1 Locational Context

Liverpool Hospital is located within the Liverpool Central Business District (CBD), on the corner of Elizabeth Street and Goulburn Street, Liverpool, within the Liverpool LGA. The Hospital site is approximately 27km south west of the Sydney CBD and has an area of approximately 14.5ha, including land east and west of the Main Southern Railway, which forms the eastern and western campus.

Liverpool Hospital is within proximity of transport services and key road links including Liverpool Train Station approximately 700m to the south, the Hume Highway to the north and the M5 South Western Motorway to the south. It is located opposite Bigge Park, which is a large public park and is adjacent to Liverpool TAFE.

The Hospital's locational context is shown at **Figure 1** and the existing Hospital campus is shown at **Figure 2**.

The Hospital is located in a cluster of health and education uses within the north-east of the Liverpool CBD. It comprises a number of buildings associated with the Hospital campus situated around an internal road network. The Hospital has a maximum capacity of 855 beds, 23 operating rooms, 60 critical care beds and provides a range of state-wide services in areas such as critical care and trauma, neonatal intensive care and brain injury rehabilitation.

2.2 Site Description

The proposed works are located in the western portion of the Hospital campus and is currently occupied by a range of existing Hospital buildings.

The site is legally described as Lot 501 in DP1165217. The land is owned by NSW Health Administration Corporation.

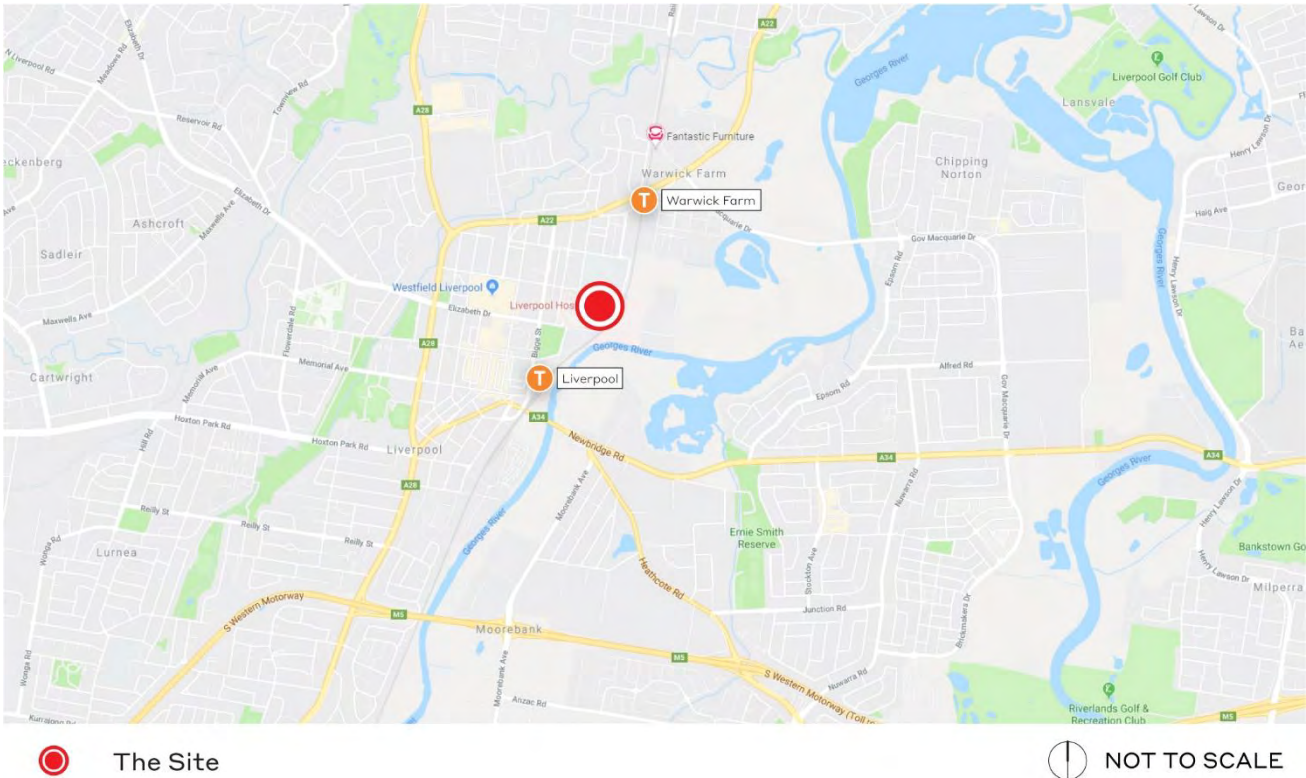


Figure 1 Locational Context

Source: Googlemaps / Ethos Urban

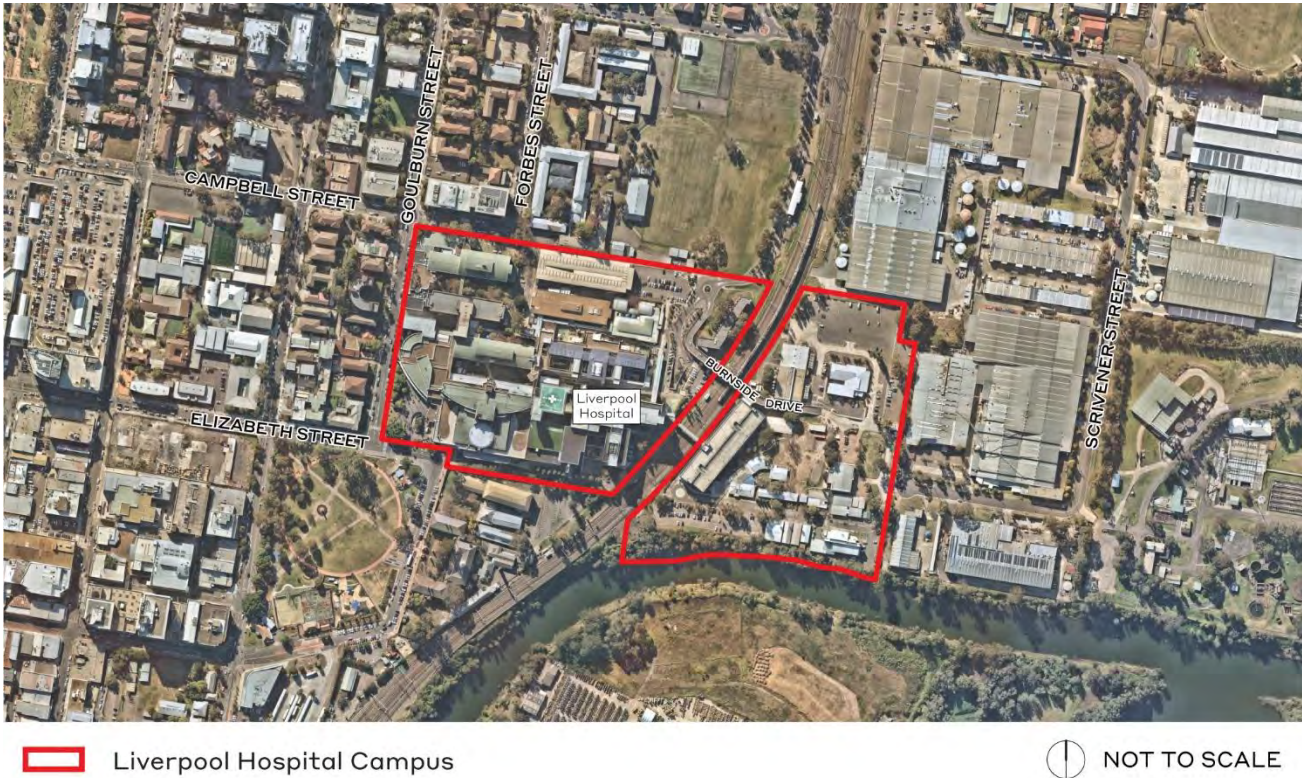


Figure 2 Liverpool Hospital campus

Source: Nearmap / Ethos Urban

3.0 Description of the proposed development

The SSD will seek consent for the construction and operation of a new Integrated Services Building and refurbishment of the Clinical Services Building. Specifically, the proposal will seek approval for:

- Construction and operation of a new 8 storey Integrated Services Building to provide:
 - Expanded Emergency department;
 - New Women's and Paediatric services;
 - New Cancer Treatment Centre;
 - New support services including Pathology, Satellite Medical Imaging and Pharmacy;
 - New education and teaching spaces;
 - New retail facilities; and
 - New basement loading dock.
- Refurbishment of existing buildings to provide:
 - Expansion and reconfiguration of the existing Emergency Department;
 - Reconfiguration of existing Operating Theatres and Same Day Surgery;
 - Caroline Chisholm Building repurposed for office accommodation;
- New Hospital entry and drop off;
- Skybridge link over Campbell Street to the Ingham Institute;
- Construction of new internal access roads and links;
- Expansion of Ambulance bays on Elizabeth Street;
- Creation of a shared zone on Campbell Street;
- Campus wayfinding and signage;
- Tree removal;
- Landscaping;
- Utilities services and amplification works; and
- Site preparation civil works.

Concept Architectural Plans prepared by Fitzpatrick and Partners are provided for information at **Attachment A**. The site location and Ground Level plan is shown at **Figure 3** and **Figure 4** and 3D massing of the proposed development is shown at **Figure 5**.

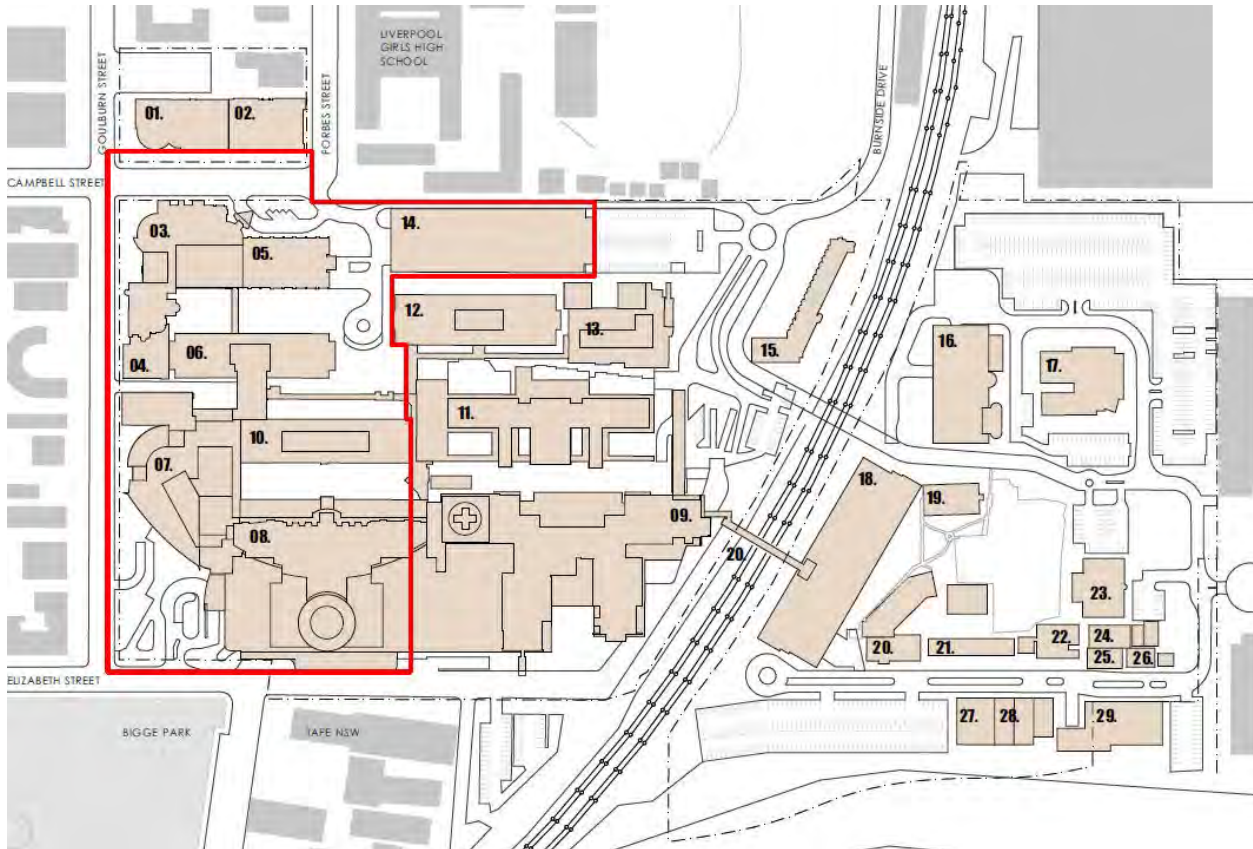


Figure 3 Site location outlined red

Source: Fitzpatrick and Partners

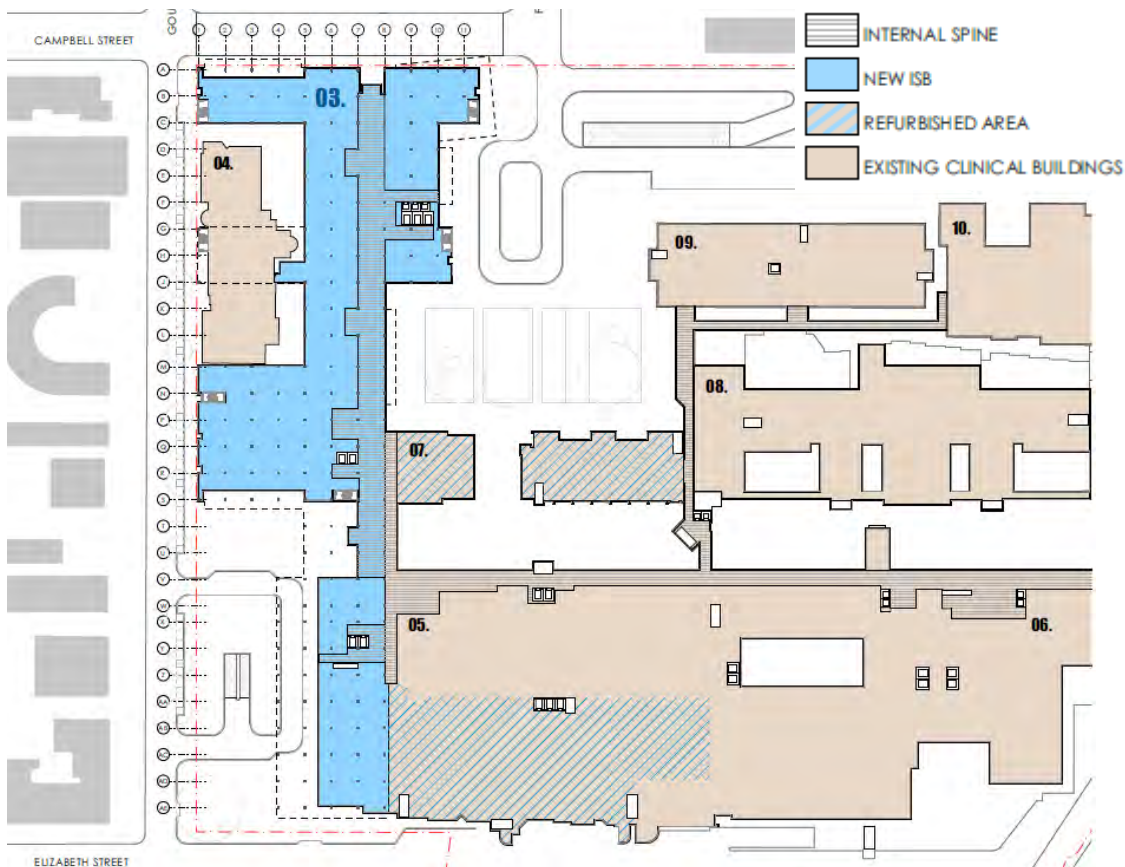


Figure 4 Ground floor plan

Source: Fitzpatrick and Partners

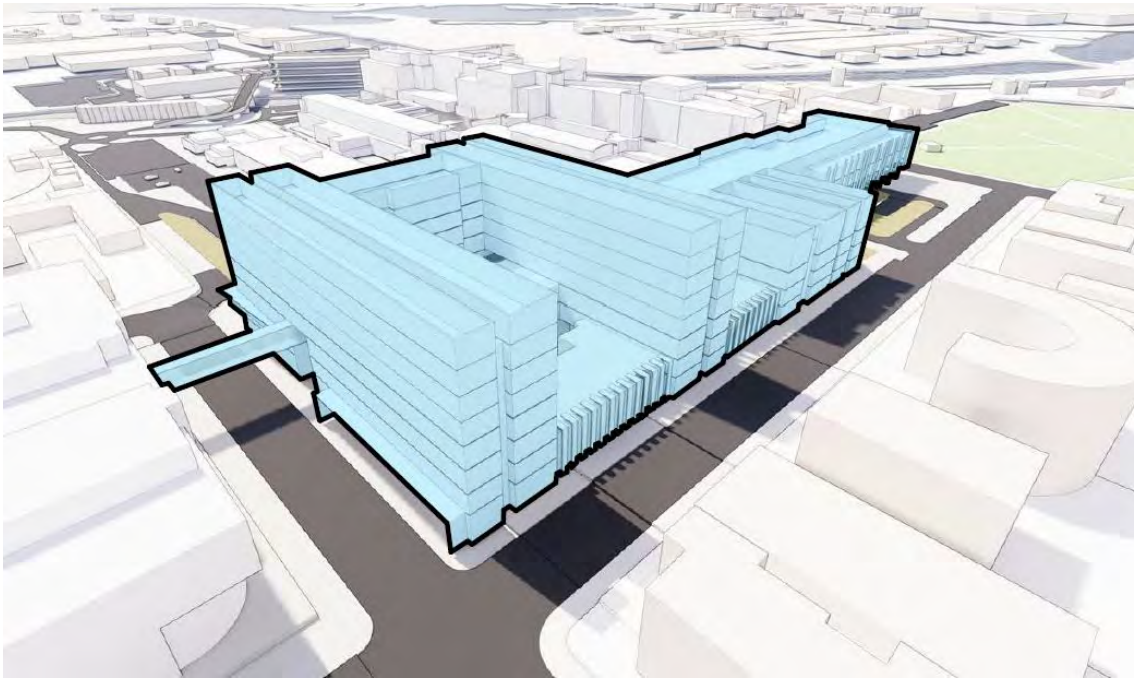


Figure 5 3D massing of proposed development – viewed from corner of Goulburn / Campbell Streets

Source: Fitzpatrick and Partners

3.1 Project Value and Job Creation

The estimated projected value is \$740 million.

The project will result in the following job creation:

- 250 construction jobs; and
- approximately 500 full time equivalent.

4.0 Strategic Need for the Project

Liverpool Hospital currently has 713 inpatient beds and provides a range of tertiary and quaternary services. The Liverpool Hospital Clinical Services Plan 2031 (CSP) predicts substantial growth in services demand to 2025/26 as a result of population increase, major infrastructure in South Western Sydney and the poor health status of people within the LGA and surrounding areas. These increases result in demand well beyond the Hospital's present infrastructure capacities.

Population projections indicate that the population of SWSLHD will increase from 966,450 people in 2016 to 1.285 million people in 2031. This is an increase of 33% over the fifteen years. The Liverpool LGA population will grow by 41% by 2031, with an additional 86,950 people, a growth rate twice that expected for the rest of NSW.

The Hospital also plays a role as a tertiary referral hospital for all of SWSLHD. It provides critical care for rural retrieval catchments and regional catchment for quaternary services.

Accordingly, there is urgent need to upgrade and expand the existing service offering of Liverpool Hospital to better meet the needs of the South Western District and to address future demand for services from a growing and ageing population.

The CSP identifies future models of care to best meet the increasing and dynamic health care needs of the community. These new models of care will be provided via integrated services that allow staff efficiencies and optimal patient flows. The redevelopment of the Hospital to deliver an integrated services facility along with an

expansion of facilities will ensure the Hospital can increase the inpatient bed numbers, as well as expanding tertiary and quaternary services.

5.0 Planning Context

5.1 Strategic Planning Framework

This section provides a summary of the key strategic plans as they apply to Liverpool Hospital. The proposed Hospital redevelopment is consistent with the outcomes of key relevant strategic plans at **Table 1**.

Table 1 Consistency with strategic plans

Strategic Plan	Comment
Greater Sydney Regional Plan	<p>The Greater Sydney Regional Plan (the Regional Plan) is the overarching strategic plan that seeks to shape future development for the Sydney metropolitan area over the next 40 years. Under the Regional Plan, Sydney will be made of three cities, with Liverpool forming part of the Western Parkland City along with Greater Penrith and Campbelltown-Macarthur. Liverpool is designated as part of the 'Metropolitan' cluster (centre) of the Western City in the centres hierarchy.</p> <p>The centre of Liverpool is to be the foundation for growing a health and education precinct that will support the growing Western City over the next 20 years. The Plan seeks to anchor university presence in Liverpool around the Government's investment in hospitals to facilitate the emergence of a health and education precinct. Liverpool is to be better connected to the rail network to help drive the education and commercial strengths of the CBD. This is further supported by Objective 24 where the NSW Government will decentralise more than 3,000 public sector jobs to Western Sydney, including targeting Liverpool.</p>
Western City District Plan	<p>The Western City District Plan sets out the planning priorities and actions to manage growth and change in the Western City District. It is a guide for implementing the Region Plan, at a district level, and is a bridge between regional and local planning. The District Plan informs local strategic planning statements, preparation of Local Environmental Plans and assessment of Planning Proposals, community strategic plans and policies.</p> <p>Planning Priority W9 specifically refers to the growth and strengthening of the Liverpool 'Metropolitan Cluster'. Liverpool is identified as a 'Collaboration Area' where the key aims include developing smart jobs around the health and education precinct.</p>
Growing Liverpool 2023	Growing Liverpool 2023 is Liverpool's 10-year community strategic plan. It is based on a set of principles that guide delivery of the vision for Liverpool and aligns with the Government's strategic policy directions. The strategic plan is somewhat out of date and responds to the strategic plans that have been superseded by the Regional and District Plans. It is expected that the Growing Liverpool 2023 will be updated in the coming years to align with the actions and priorities in the Regional and District Plan.
Georges River Precinct Plan	The Plan aims to extend the Liverpool City Centre to create better connections to and through the river and aims to make Liverpool into a 'true river city'. The Plan outlines a high-level vision for the potential regeneration of the Moorebank Precinct, opposite the Liverpool CBD. The Plan does not introduce any planning controls and rather provides a framework for future planning guidance.

5.2 Environmental Planning and Assessment Act 1979

The EP&A Act establishes the assessment framework for SSD. Under Section 4.38 of the Act the Minister for Planning and Public Spaces is the consent authority for SSD. Section 4.12(8) requires that a development application for SSD is to be accompanied by an Environmental Impact Statement (EIS) in the form prescribed by the Regulations.

5.3 Roads Act 1993

As Campbell Street is a Council owned road, a Section 138 approval will be required to implement the shared way.

5.4 State Environmental Planning Policy (State and Regional Development) 2011

The *State Environmental Planning Policy (State and Regional Development) 2011* (SEPP SRD) identifies development which is declared to be State Significant. Clause 14 of Schedule 1 of the Policy provides that State Significant Development includes:

Development that has a capital investment value of more than \$30 million for any of the following purposes:

- (a) hospitals,*
- (b) medical centres,*
- (c) health, medical or related research facilities (which may also be associated with the facilities or research activities of a NSW local health district board, a University or an independent medical research institute).*

As the proposal is for the purposes of a hospital that has an estimated Capital Investment Value in excess of \$30 million, it is SSD.

5.5 Other State planning policies

In addition to the above, the following policies apply to the site and will need to be considered as part of the SSD application:

- *State Environmental Planning Policy No. 33 – Hazardous and Offensive Development (SEPP 33);*
- *State Environmental Planning Policy No. 55 – Remediation of Land (SEPP 55); and*
- *State Environmental Planning policy (Infrastructure) 2007.*

5.6 Liverpool Local Environmental Plan 2008

The site is zoned SP2 Infrastructure – Health Services Facility and Educational Establishment in the *Liverpool Local Environmental Plan 2008* (LLEP 2008). A Health Services Facility is defined as:

Health Services Facility means a building or place used to provide medical or other services relating to the maintenance or improvement of the health, or the restoration to health, of persons or the prevention of disease in or treatment of injury to persons, and includes any of the following:

- (a) a medical centre,*
- (b) community health service facilities,*
- (c) health consulting rooms,*
- (d) patient transport facilities, including helipads and ambulance facilities,*
- (e) hospital.*

On that basis the proposal is permissible.

Table 2 below provides a summary of the key relevant provisions in the LLEP 2008 that apply to the site. These matters will be addressed further as part of the EIS.

Table 2 Liverpool Local Environmental Plan 2008

Item	Control
Height of Buildings	35m
Floor Space Ratio	2.5:1
Infrastructure development and use of existing buildings of the Crown	<p><i>This Plan does not restrict or prohibit, or enable the restriction or prohibition of, the carrying out of any development, by or on behalf of a public authority, that is permitted to be carried out with or without development consent, or that is exempt development, under State Environmental Planning Policy (Infrastructure) 2007.</i></p> <p>Development standards that apply to the site under LLEP 2008 cannot serve to restrict the proposed development which is permitted under the ISEPP. Notwithstanding, there will be a merit-based consideration of the proposed building in the EIS.</p>
Heritage	<p>Whilst the Hospital site itself is not identified as an item of heritage significance it is partially located within the Bigge Park Conservation Area on the Heritage map.</p> <p>The site is located close to a number of local heritage items in the area, including:</p> <ul style="list-style-type: none"> • The local street network identified as 'Plan of Town of Liverpool (early town centre street layout–Hoddle 1827)'; • Liverpool College (TAFE) site, including Blocks A–G, chimneystack, fences, gatehouses and archaeological features (formerly Liverpool Hospital and Benevolent Asylum); • Bigge Park; and • Cast-iron letterbox (close to the corner of College and Elizabeth St).
Land Reservation	The site is not identified by the land reservation acquisition map.
Flood planning	The western campus is identified as being Flood Prone however it is not identified as being within a flood planning area.
Acid Sulfate Soils	The site is identified as being located on land with Class 5 Acid Sulfate Soil.
Key sites	The site is identified by the Key Sites map which seeks to protect the Hospital helicopter airspace by restricting development that intrudes into the Hospital OIS contour - 42.71.
Sun access in Liverpool City Centre	<p>Sun access to Bigge Park is protected by the following clause:</p> <ul style="list-style-type: none"> • Land within 9m of the public right of way on the northern side of Elizabeth Street, opposite Bigge Park, between Bigge Street and College Street is limited by a maximum height of 20 metres.
Design excellence in Liverpool City Centre	Development involving the construction of a new building or external alterations to an existing building in the Liverpool City Centre is to exhibit design excellence.

6.0 Environmental and Planning Issues

Based on our preliminary environmental assessment, the following are the key environmental assessment issues that will need to be considered as part of the EIS.

6.1 Built form and Urban Design

The proposed scheme will be subject to an assessment with regard to the siting, height and massing of the development in the context of the surrounding landscape. Consultation will be undertaken with the NSW Government Architect in accordance with the State Design Review Panel process.

6.2 Environmental Amenity

The EIS will assess any amenity impacts on adjoining properties including acoustic impacts, visual privacy and overshadowing and how the proposal intends on mitigating impacts where they occur.

6.3 Traffic and Parking

Traffic and parking analysis will be undertaken to determine the current daily and peak hour vehicle, public transport, pedestrian and bicycle movements. This will include an analysis of the provision of staff and visitor car parking at the Hospital and assess the existing and future transport needs associated with the Hospital.

The assessment will also consider access arrangements and measures to mitigate any associated traffic impacts. A Green Travel Plan will also be included to address ways in which sustainable and active transport modes can be encouraged and used by visitors and staff.

6.4 Heritage

The site is partly located in a Heritage Conservation Area and is proximate to a number of local heritage items. A Heritage Impact Statement and an Aboriginal Cultural Heritage Assessment Report (ACHAR) will be prepared to assess the impacts of the proposed development on the heritage significance.

6.5 Geotechnical, Contamination and Hazardous Materials

A geotechnical investigation of the site will be undertaken where new buildings are proposed. Recommendations for the substructure of the buildings will be considered in the detailed design of the buildings and will be addressed. Any validation requirements relating to ground conditions to ensure the site is suitable for the intended use will be adopted.

Relevant investigations will be undertaken in accordance with SEPP 55 – Remediation of Land, Management Land Contamination – Planning Guidelines, and SEPP 33 – Hazardous and Offensive Development. The assessment against the SEPPs will be submitted with the SSD Application.

6.6 Noise and Vibration

A Noise and Vibration Assessment will be undertaken to assess the main noise and vibration generating sources during construction and operation and outline measures to minimise and mitigate the potential noise impacts on surrounding sensitive receivers.

6.7 Biodiversity

A Biodiversity Development Assessment Report (BDAR) will be prepared to assess the vegetation and biodiversity value of the site and any impacts of the proposed development.

6.8 Environmentally Sustainable Development

An assessment will be undertaken to detail how the proposed new Integrated Services Building will incorporate ESD principles in the ongoing operation phases. It will include a framework to consider and reflect national best practice in sustainable building principles.

6.9 Infrastructure and Servicing

Consultation will be undertaken with all relevant service providers in relation to the existing capacity and any augmentation and easement requirements for the development for the provision of utilities.

7.0 Consultation

In preparing the EIS, it is expected that the proponent will undertake consultation with the following stakeholders:

- Liverpool City Council;
- NSW Government Architect (as part of the State Design Review Panel);
- Transport for NSW;
- Sydney Trains; and
- Surrounding landowners and the community.

It is noted that consultation with the Government Architect had begun with the project team meeting on 4 September 2019 to discuss the masterplan of the project, and this proposal will be presented to the State Design Review Panel (first review) scheduled for 23rd October 2019.

8.0 Conclusion

The purpose of this letter is to request the SEARs for the preparation of an EIS for Liverpool Hospital for the development of a new Integrated Services Building and refurbishment of the Clinical Services Building. The proposed development will enable the redevelopment of the western Hospital campus, to support and strengthen the provision of medical services and facilities in the South Western Sydney District.

We trust that the information detailed in this letter is sufficient to enable the Secretary to issue the SEARs for the preparation of the EIS. Should you have any queries about this matter, please do not hesitate to contact Rachel Mitchell on 0438 220 252.

Yours sincerely



Bruno Zinghini
Executive Director, Western

Attachment A – Concept Architectural Plans

Appendix B AHIMS

AHIMS Web Services (AWS)

Extensive search - Site list report

Your Ref/PO Number : PR139862 Liverpool hosp

Client Service ID : 428788

SiteID	SiteName	Datum	Zone	Easting	Northing	Context	Site Status	SiteFeatures	SiteTypes	Reports
45-5-2912	Brickmakers Creek	AGD	56	307950	6245250	Open site	Destroyed	Artefact : 8		102196
	<u>Contact</u>	<u>Recorders</u>	<u>Permits</u>							
45-5-2540	Liverpool Weir ocs1	AGD	56	308420	6244040	Open site	Valid	Artefact : -	Open Camp Site	98443,102340
	<u>Contact</u>	<u>Recorders</u>	<u>Permits</u>							
45-5-3428	CC 1	GDA	56	309112	6246310	Open site	Valid	Artefact : 27		
	<u>Contact</u>	<u>Recorders</u>	<u>Permits</u>							
45-5-3629	Collingwood Park (CW 1)	GDA	56	307600	6243160	Open site	Valid	Artefact : -, Potential Archaeological Deposit (PAD) : -		101316
	<u>Contact</u>	<u>Recorders</u>	<u>Permits</u>							
45-5-5192	Shell Midden OPTRd	AGD	56	310203	6244869	Open site	Valid	Shell : 1		
	<u>Contact</u>	<u>Recorders</u>	<u>Permits</u>							
45-5-3271	CC1	AGD	56	309112	6246310	Open site	Valid	Potential Archaeological Deposit (PAD) : -, Artefact : -		102196
	<u>Contact</u>	<u>Recorders</u>	<u>Permits</u>							
	T Russell	Australian Museum Consulting (AM Consulting)								2582,2594,2696

Report generated by AHIMS Web Service on 24/06/2019 for Veronica Norman for the following area at Datum :GDA, Zone : 56, Eastings : 307073 - 310534, Northings : 6243210 - 6246575 with a Buffer of 50 meters. Additional Info : Report writing. Number of Aboriginal sites and Aboriginal objects found is 6

This information is not guaranteed to be free from error omission. Office of Environment and Heritage (NSW) and its employees disclaim liability for any act done or omission made on the information and consequences of such acts or omission.