

fitzpatrick+partners

© Copyright 2018  
p. +61 (0)2 8274 8200 w. www.fitzpatrickpartners.com  
a. LEVEL 6, 156 CLARENCE STREET, SYDNEY 2000, AUSTRALIA

THIS DRAWING IS ISSUED UPON THE CONDITION IT IS NOT COPIED, REPRODUCED, RETAINED OR DISCLOSED TO ANY UNAUTHORISED PERSON EITHER WHOLLY OR IN PART WITHOUT PRIOR CONSENT IN WRITING OF fitzpatrick+partners.  
DO NOT SCALE DRAWINGS. CHECK DIMENSIONS BEFORE COMMENCING WORK.  
DRAWINGS SHOW DESIGN INTENT ONLY. SHOP DRAWINGS ARE TO BE PROVIDED FOR APPROVAL PRIOR TO CONSTRUCTION OR MANUFACTURE.  
INCONSISTENCIES ARE TO BE REPORTED TO fitzpatrick + partners.

REV.	DATE	DESCRIPTION
04	17/01/20	FOR REVIEW
05	23/01/20	FOR REVIEW
06	24/04/20	FOR REVIEW
07	07/05/20	SSDA SUBMISSION

DESCRIPTION  
FOR REVIEW  
FOR REVIEW  
FOR REVIEW  
SSDA SUBMISSION

CHK  
RP  
RP  
RP  
RP

PROJECT  
LIVERPOOL HEALTH & ACADEMIC PRECINCT  
ELIZABETH STREET LIVERPOOL NSW  
CLIENT  
HEALTH INFRASTRUCTURE  
14/77 PACIFIC HWY, NORTH SYDNEY NSW 2060

PROJECT NORTH SCALE  
1:350 @A3  
25mm ON ORIGINAL

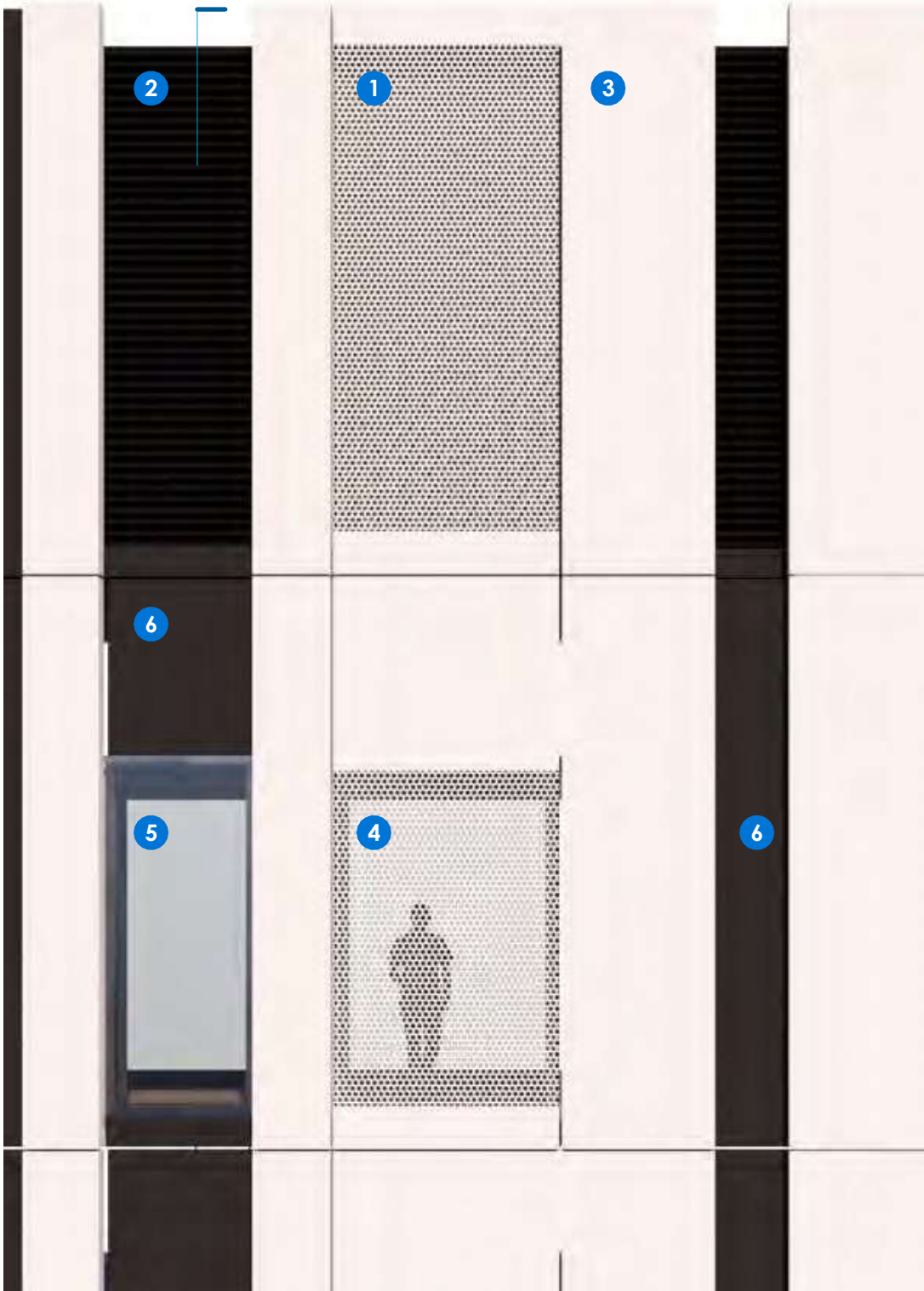
DRAWING  
SOUTH ELEVATION - NEW  
AMBULANCE STATION  
PRINT DATE  
8/05/2020

PROJECT NO.  
21807  
STATUS  
SSDA SUBMISSION  
DRAWING NO.  
A-SSDA-MW-29  
ISSUE  
07

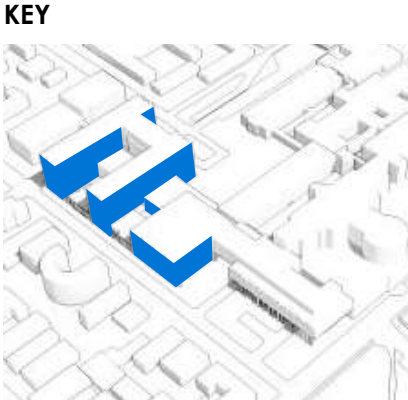
- LEGEND
- 1 White perforated aluminium panel over black horizontal metal louvres
  - 2 Black horizontal metal louvres
  - 3 White aluminium panel
  - 4 White perforated aluminium panel over glazing panel
  - 5 Glazing panel
  - 6 Charcoal pre-finished fibre cement sheet
  - 7 Suspended ceiling

plant level

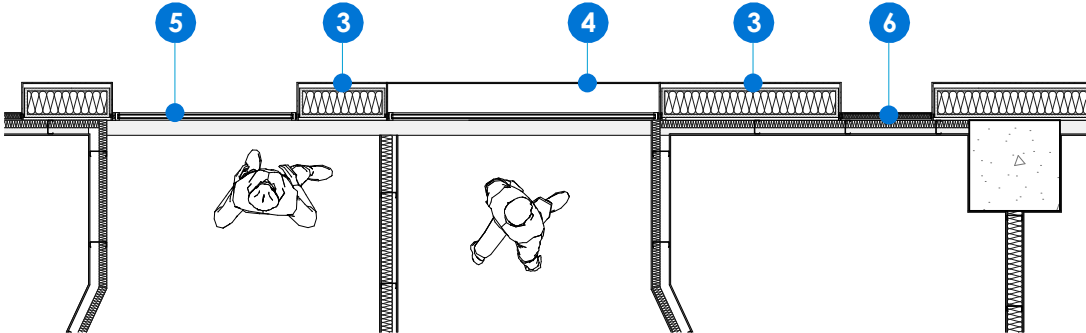
typical level



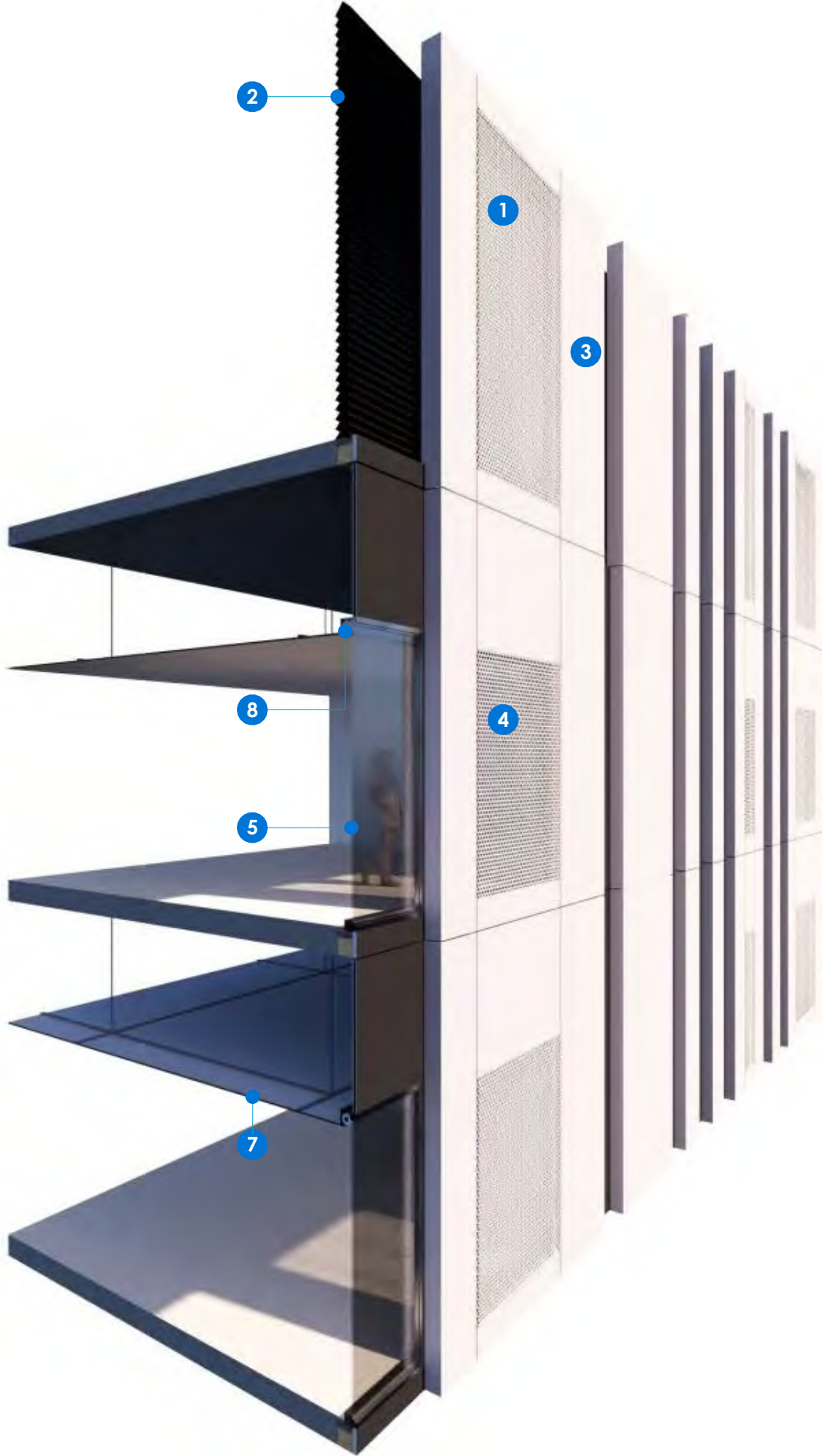
TYPICAL ELEVATION



KEY



TYPICAL PLAN



SECTION

fitzpatrick+partners

© Copyright 2018  
p. +61 (0)2 8274 8200 w. www.fitzpatrickpartners.com  
a. LEVEL 6, 156 CLARENCE STREET, SYDNEY 2000, AUSTRALIA

THIS DRAWING IS ISSUED UPON THE CONDITION IT IS NOT COPIED, REPRODUCED, RETAINED OR DISCLOSED TO ANY UNAUTHORISED PERSON EITHER WHOLLY OR IN PART WITHOUT PRIOR CONSENT IN WRITING OF fitzpatrick+partners  
DO NOT SCALE DRAWINGS. CHECK DIMENSIONS BEFORE COMMENCING WORK.  
DRAWINGS SHOW DESIGN INTENT ONLY. SHOP DRAWINGS ARE TO BE PROVIDED FOR APPROVAL PRIOR TO CONSTRUCTION OR MANUFACTURE. INCONSISTENCIES ARE TO BE REPORTED TO fitzpatrick + partners.

AMENDMENTS	REV.	DATE
04	17/01/20	
05	23/01/20	
06	24/04/20	
07	07/05/20	

DESCRIPTION  
FOR REVIEW  
FOR REVIEW  
FOR REVIEW  
SSDA SUBMISSION

CHK  
RP  
RP  
RP  
RP

PROJECT  
LIVERPOOL HEALTH & ACADEMIC PRECINCT  
ELIZABETH STREET LIVERPOOL NSW  
CLIENT  
HEALTH INFRASTRUCTURE  
14/77 PACIFIC HWY, NORTH SYDNEY NSW 2060

PROJECT NORTH SCALE  
1:50 @A3  
25mm ON ORIGINAL

DRAWING  
FACADE DETAIL SECTION IPU  
TOWER  
PRINT DATE  
8/05/2020

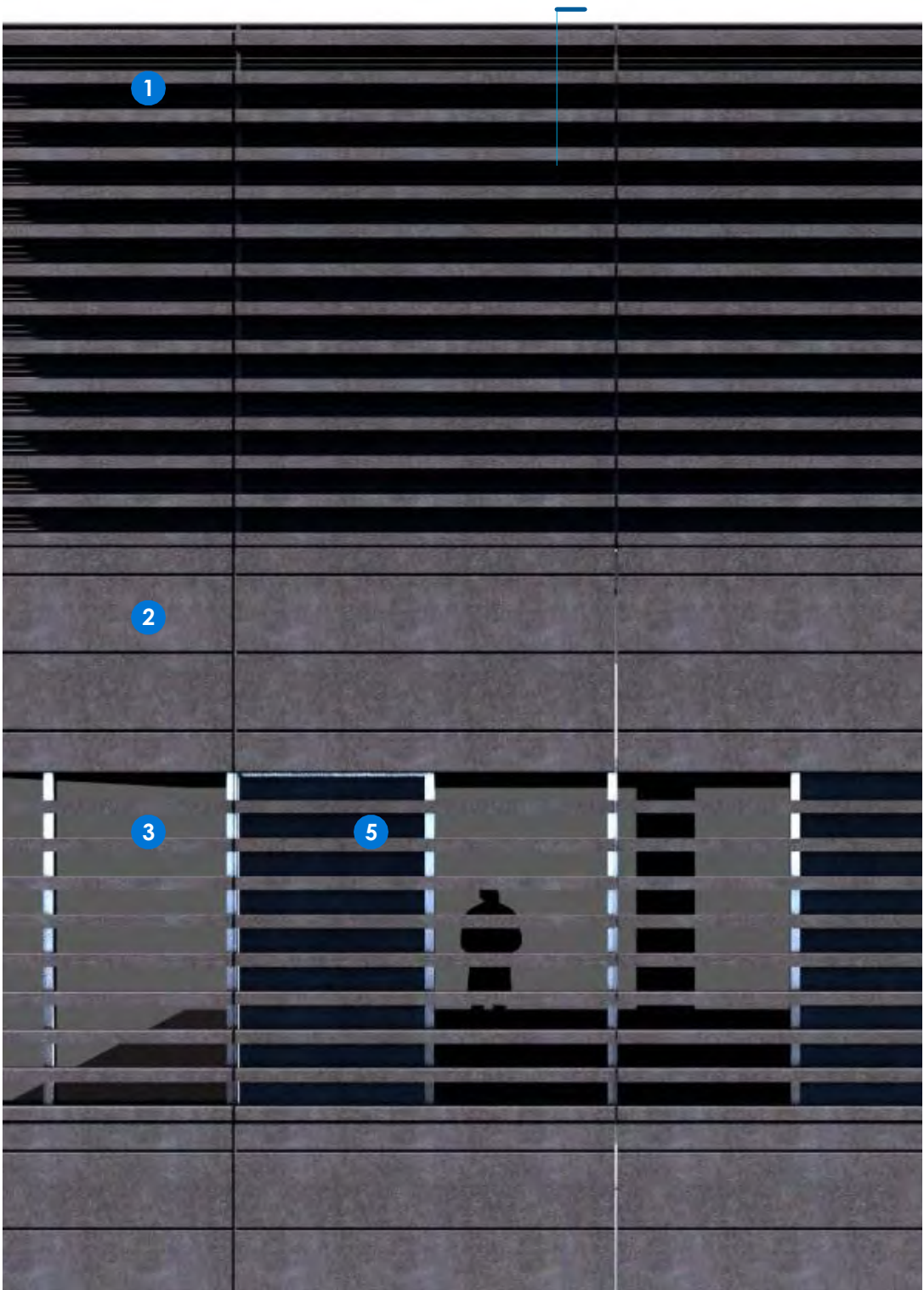
PROJECT NO. 21807	DRAWING NO. A-SSDA-MW-30	ISSUE 07
STATUS SSDA SUBMISSION		



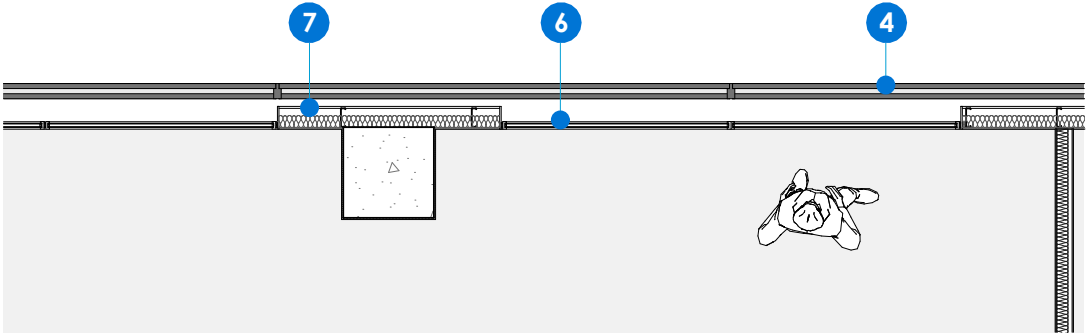
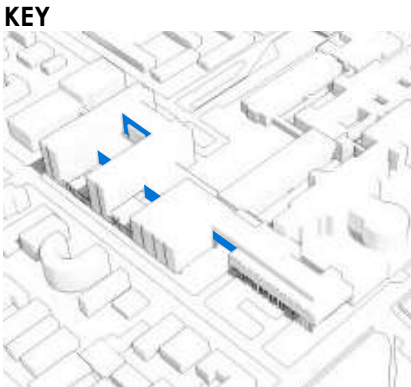
- LEGEND
- 1 Charcoal terracotta louvres over black two-stage louvre
  - 2 Charcoal terracotta panel
  - 3 Charcoal terracotta louvres over glazing panel
  - 4 Charcoal terracotta louvres
  - 5 Charcoal terracotta louvres over black aluminium metal panel
  - 6 Glazing panel
  - 7 Black aluminium metal panel
  - 8 Suspended ceiling

plant level

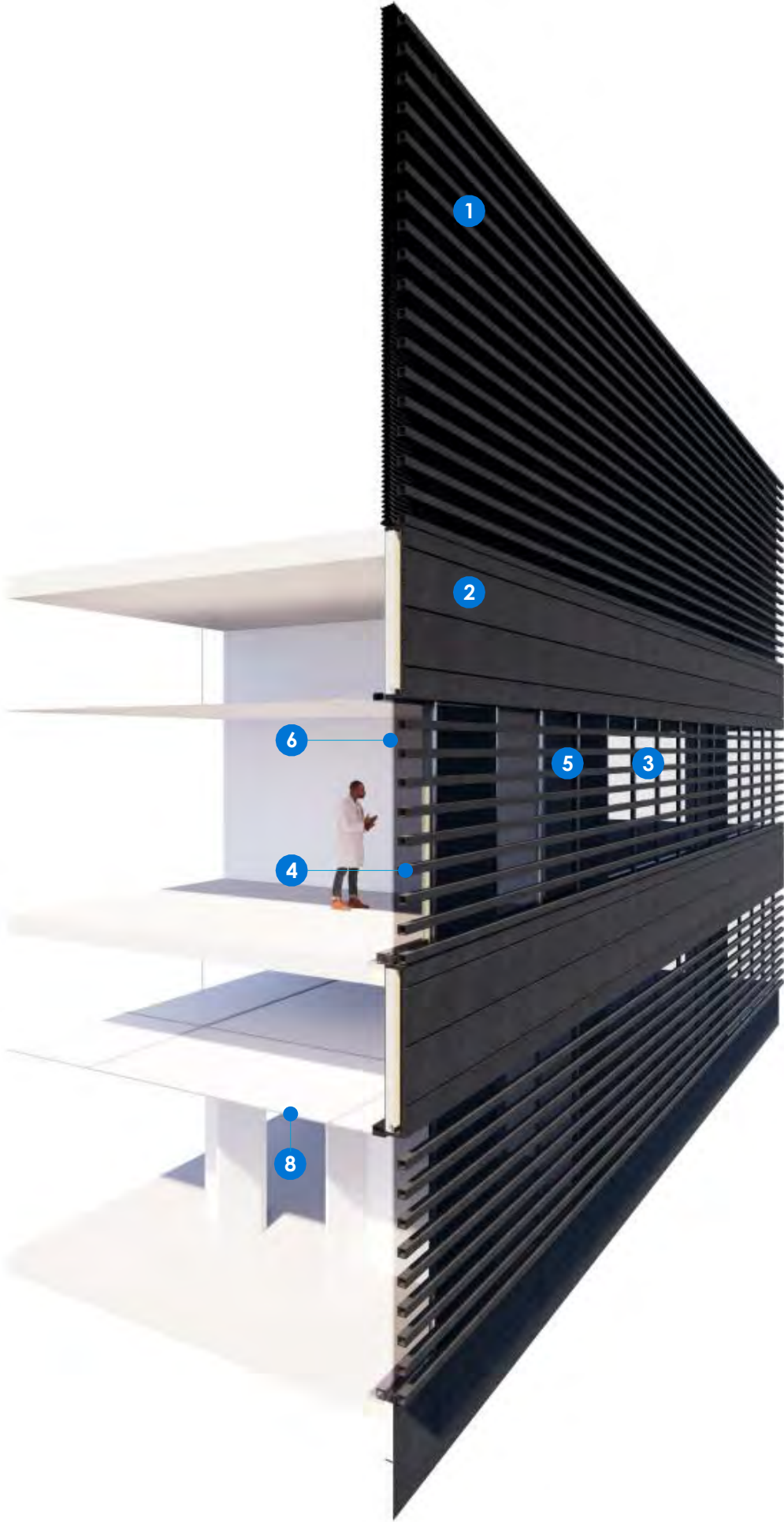
typical level



TYPICAL ELEVATION



TYPICAL PLAN



SECTION

fitzpatrick+partners

© Copyright 2018  
p. +61 (0)2 8274 8200 w. www.fitzpatrickpartners.com  
a. LEVEL 6, 156 CLARENCE STREET, SYDNEY 2000, AUSTRALIA

THIS DRAWING IS ISSUED UPON THE CONDITION IT IS NOT COPIED, REPRODUCED, RETAINED OR DISCLOSED TO ANY UNAUTHORISED PERSON EITHER WHOLLY OR IN PART WITHOUT PRIOR CONSENT IN WRITING OF fitzpatrick+partners  
DO NOT SCALE DRAWINGS. CHECK DIMENSIONS BEFORE COMMENCING WORK.  
DRAWINGS SHOW DESIGN INTENT ONLY. SHOP DRAWINGS ARE TO BE PROVIDED FOR APPROVAL PRIOR TO CONSTRUCTION OR MANUFACTURE. INCONSISTENCIES ARE TO BE REPORTED TO fitzpatrick + partners.

AMENDMENTS		
REV.	DATE	DESCRIPTION
04	17/01/20	FOR REVIEW
05	23/01/20	FOR REVIEW
06	24/04/20	FOR REVIEW
07	07/05/20	SSDA SUBMISSION

CHK	PROJECT
RP	LIVERPOOL HEALTH & ACADEMIC PRECINCT
RP	ELIZABETH STREET LIVERPOOL NSW
RP	CLIENT
RP	HEALTH INFRASTRUCTURE
RP	14/77 PACIFIC HWY, NORTH SYDNEY NSW 2060

PROJECT NORTH	SCALE
	1:50 @A3
25mm ON ORIGINAL	

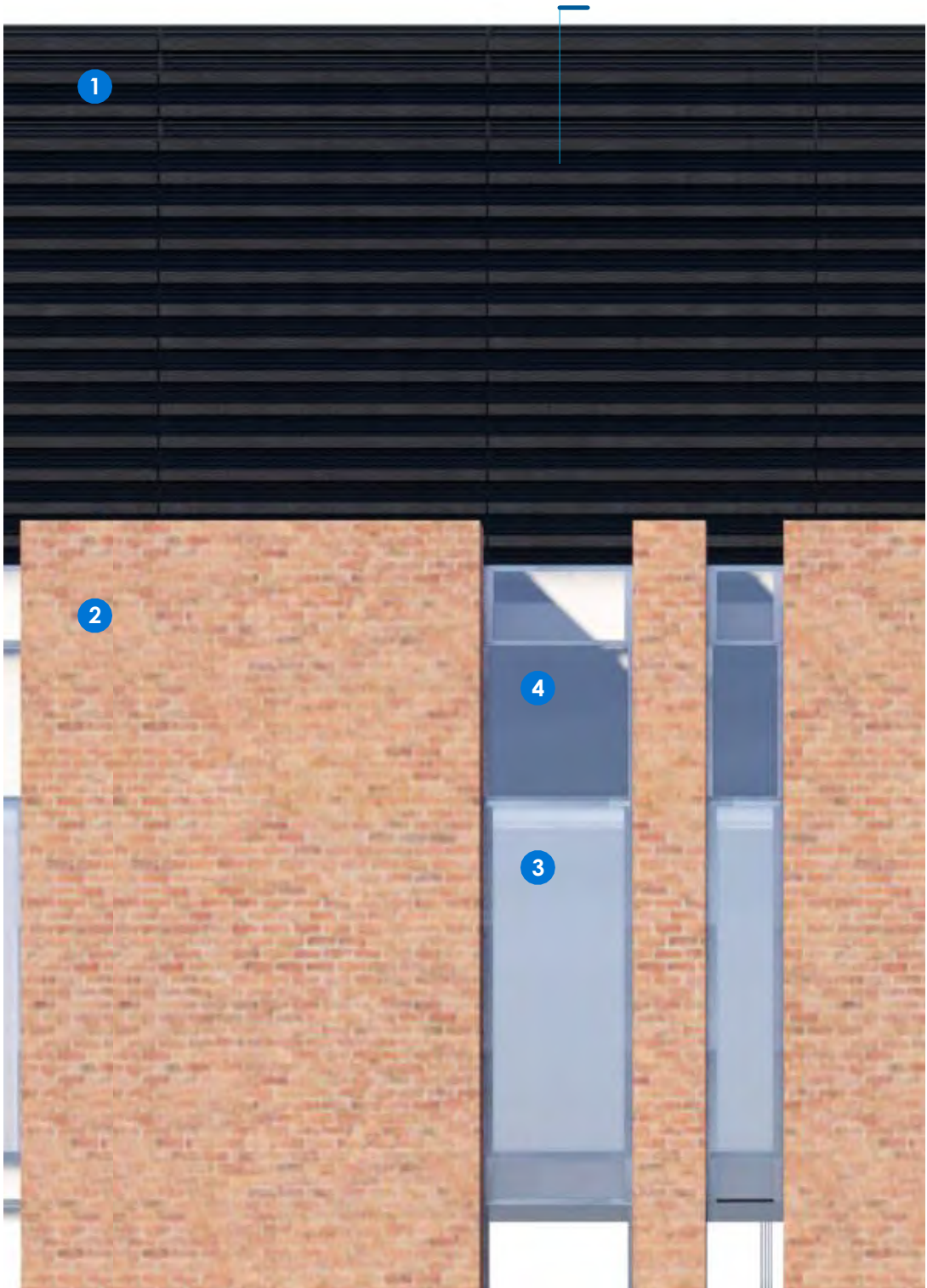
DRAWING	PROJECT NO.	DRAWING NO.	ISSUE
FACADE DETAIL SECTION PODIUM	21807	A-SSDA-MW-31	07
PRINT DATE	SSDA SUBMISSION		
8/05/2020			



- LEGEND
- 1 Black horizontal louvres
  - 2 Brick work
  - 3 Glazing panel
  - 4 White colourback spandrel panel
  - 5 Suspended ceiling

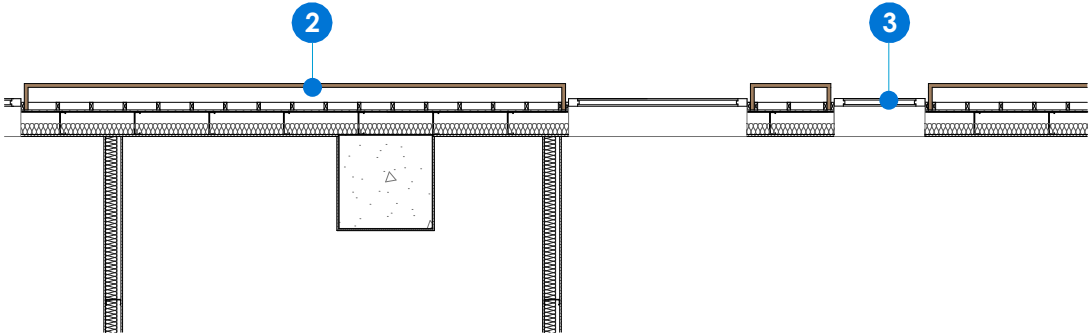
plant level

typical level



TYPICAL ELEVATION

KEY



TYPICAL PLAN



SECTION

fitzpatrick+partners

© Copyright 2018  
p. +61 (0)2 8274 8200 w. www.fitzpatrickpartners.com  
a. LEVEL 6, 156 CLARENCE STREET, SYDNEY 2000, AUSTRALIA

THIS DRAWING IS ISSUED UPON THE CONDITION IT IS NOT COPIED, REPRODUCED, RETAINED OR DISCLOSED TO ANY UNAUTHORISED PERSON EITHER WHOLLY OR IN PART WITHOUT PRIOR CONSENT IN WRITING OF fitzpatrick+partners  
DO NOT SCALE DRAWINGS. CHECK DIMENSIONS BEFORE COMMENCING WORK.  
DRAWINGS SHOW DESIGN INTENT ONLY. SHOP DRAWINGS ARE TO BE PROVIDED FOR APPROVAL PRIOR TO CONSTRUCTION OR MANUFACTURE. INCONSISTENCIES ARE TO BE REPORTED TO fitzpatrick + partners.

AMENDMENTS	REV.	DATE	DESCRIPTION
04	17/01/20	FOR REVIEW	
05	23/01/20	FOR REVIEW	
06	24/04/20	FOR REVIEW	
07	07/05/20	SSDA SUBMISSION	

CHK	PROJECT
RP	LIVERPOOL HEALTH & ACADEMIC PRECINCT
RP	ELIZABETH STREET LIVERPOOL NSW
RP	CLIENT
RP	HEALTH INFRASTRUCTURE
	14/77 PACIFIC HWY, NORTH SYDNEY NSW 2060


PROJECT NORTH	SCALE
	1:50 @A3
25mm ON ORIGINAL	

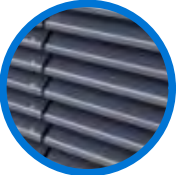
DRAWING
FACADE DETAIL SECTION BRICK
PRINT DATE
8/05/2020


PROJECT NO.	DRAWING NO.	ISSUE
21807	A-SSDA-MW-32	07
STATUS		
SSDA SUBMISSION		

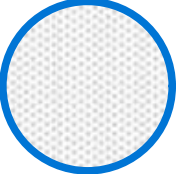


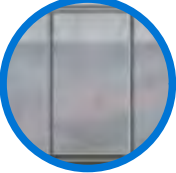
LEGEND

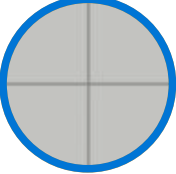
- 

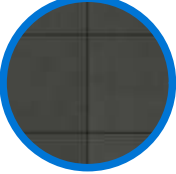
1. white perforated aluminium panel over black metal louvres
- 


2. black horizontal metal louvres
- 


3. white aluminium panel
- 


4. white perforated aluminium panel over glazing panel
- 

5. glazing panel
- 

6. grey fibre cement panel
- 

7. charcoal terracotta panels
- 

8. charcoal terracotta horizontal battens
- 

9. brick work
- 

10. metal panel match to brick color



fitzpatrick+partners

© Copyright 2018  
p. +61 (0)2 8274 8200 w. www.fitzpatrickpartners.com  
a. LEVEL 6, 156 CLARENCE STREET, SYDNEY 2000, AUSTRALIA

THIS DRAWING IS ISSUED UPON THE CONDITION IT IS NOT COPIED, REPRODUCED, RETAINED OR DISCLOSED TO ANY UNAUTHORISED PERSON EITHER WHOLLY OR IN PART WITHOUT PRIOR CONSENT IN WRITING OF fitzpatrick+partners.  
DO NOT SCALE DRAWINGS. CHECK DIMENSIONS BEFORE COMMENCING WORK.  
DRAWINGS SHOW DESIGN INTENT ONLY. SHOP DRAWINGS ARE TO BE PROVIDED FOR APPROVAL PRIOR TO CONSTRUCTION OR MANUFACTURE. INCONSISTENCIES ARE TO BE REPORTED TO fitzpatrick + partners.

AMENDMENTS	REV.	DATE	DESCRIPTION
04	17/01/20	FOR REVIEW	
05	23/01/20	FOR REVIEW	
06	24/04/20	FOR REVIEW	
07	07/05/20	SSDA SUBMISSION	

CHK	PROJECT
RP	LIVERPOOL HEALTH & ACADEMIC PRECINCT
RP	ELIZABETH STREET LIVERPOOL NSW
RP	CLIENT
RP	HEALTH INFRASTRUCTURE
RP	14/77 PACIFIC HWY, NORTH SYDNEY NSW 2060


PROJECT NORTH	SCALE
25mm ON ORIGINAL	

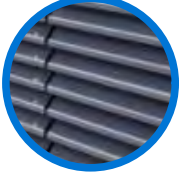
DRAWING
SCHEDULE OF FINISHES: SOUTH
WEST VIEW
PRINT DATE
8/05/2020


PROJECT NO.	DRAWING NO.	ISSUE
21807	A-SSDA-MW-33	07
STATUS		
SSDA SUBMISSION		

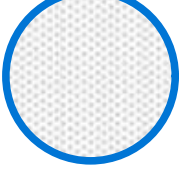



LEGEND

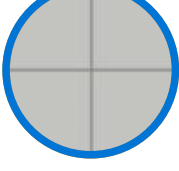
- 

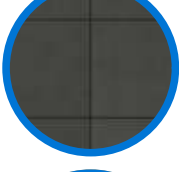
1. white perforated aluminium panel over black metal louvres
- 


2. black horizontal metal louvres
- 


3. white aluminium panel
- 


4. white perforated aluminium panel over glazing panel
- 

5. glazing panel
- 

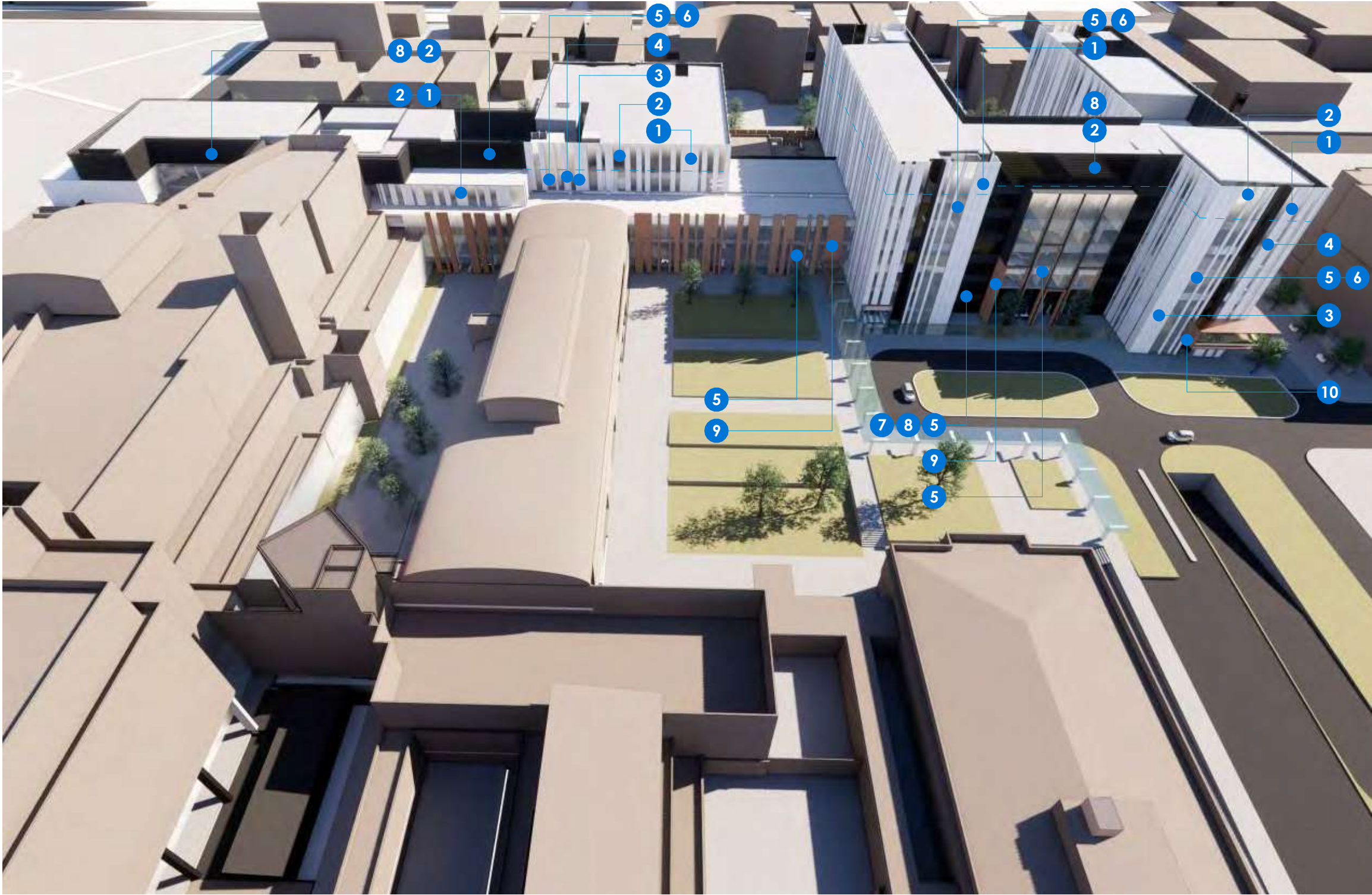
6. grey fibre cement panel
- 

7. charcoal terracotta panels
- 

8. charcoal terracotta horizontal battens
- 

9. brick work
- 

10. metal panel match to brick color



fitzpatrick+partners

© Copyright 2018  
p. +61 (0)2 8274 8200 w. www.fitzpatrickpartners.com  
a. LEVEL 6, 156 CLARENCE STREET, SYDNEY 2000, AUSTRALIA

THIS DRAWING IS ISSUED UPON THE CONDITION IT IS NOT COPIED, REPRODUCED, RETAINED OR DISCLOSED TO ANY UNAUTHORISED PERSON EITHER WHOLLY OR IN PART WITHOUT PRIOR CONSENT IN WRITING OF fitzpatrick+partners.  
DO NOT SCALE DRAWINGS. CHECK DIMENSIONS BEFORE COMMENCING WORK.  
DRAWINGS SHOW DESIGN INTENT ONLY. SHOP DRAWINGS ARE TO BE PROVIDED FOR APPROVAL PRIOR TO CONSTRUCTION OR MANUFACTURE. INCONSISTENCIES ARE TO BE REPORTED TO fitzpatrick + partners.

AMENDMENTS		DESCRIPTION
REV.	DATE	
04	17/01/20	FOR REVIEW
05	23/01/20	FOR REVIEW
06	24/04/20	FOR REVIEW
07	07/05/20	SSDA SUBMISSION

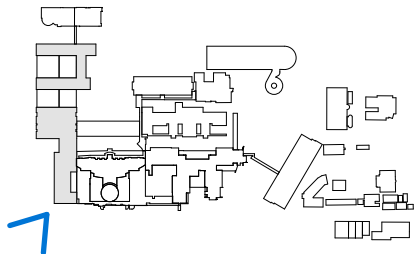
CHK RP RP RP RP	PROJECT
	LIVERPOOL HEALTH & ACADEMIC PRECINCT
	ELIZABETH STREET LIVERPOOL NSW
	CLIENT
	HEALTH INFRASTRUCTURE
	14/77 PACIFIC HWY, NORTH SYDNEY NSW 2060

PROJECT NORTH	SCALE
	
25mm ON ORIGINAL	

DRAWING
SCHEDULE OF FINISHES: EAST VIEW
PRINT DATE
8/05/2020

PROJECT NO.	DRAWING NO.	ISSUE
21807	A-SSDA-MW-34	07
STATUS		
SSDA SUBMISSION		





fitzpatrick+partners

© Copyright 2018  
p. +61 (0)2 8274 8200 w. www.fitzpatrickpartners.com  
a. LEVEL 6, 156 CLARENCE STREET, SYDNEY 2000, AUSTRALIA

THIS DRAWING IS ISSUED UPON THE CONDITION IT IS NOT COPIED, REPRODUCED, RETAINED OR DISCLOSED TO ANY UNAUTHORISED PERSON EITHER WHOLLY OR IN PART WITHOUT PRIOR CONSENT IN WRITING OF fitzpatrick+partners.  
DO NOT SCALE DRAWINGS. CHECK DIMENSIONS BEFORE COMMENCING WORK.  
DRAWINGS SHOW DESIGN INTENT ONLY. SHOP DRAWINGS ARE TO BE PROVIDED FOR APPROVAL PRIOR TO CONSTRUCTION OR MANUFACTURE. INCONSISTENCIES ARE TO BE REPORTED TO fitzpatrick + partners.

AMENDMENTS		DESCRIPTION
REV.	DATE	
04	17/01/20	FOR REVIEW
05	23/01/20	FOR REVIEW
06	24/04/20	FOR REVIEW
07	07/05/20	SSDA SUBMISSION

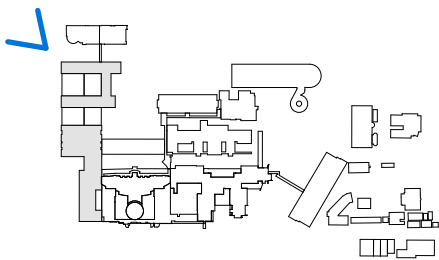
CHK RP RP RP RP	PROJECT
	LIVERPOOL HEALTH & ACADEMIC PRECINCT
	ELIZABETH STREET LIVERPOOL NSW
	CLIENT
	HEALTH INFRASTRUCTURE
	14/77 PACIFIC HWY, NORTH SYDNEY NSW 2060

PROJECT NORTH SCALE  
25mm ON ORIGINAL

DRAWING  
3D VIEW: CORNER OF GOULBURN  
AND ELIZABETH ST  
PRINT DATE  
8/05/2020

PROJECT NO. 21807	DRAWING NO. A-SSDA-MW-35	ISSUE 07
STATUS SSDA SUBMISSION		





fitzpatrick+partners

© Copyright 2018  
p. +61 (0)2 8274 8200 w. www.fitzpatrickpartners.com  
a. LEVEL 6, 156 CLARENCE STREET, SYDNEY 2000, AUSTRALIA

THIS DRAWING IS ISSUED UPON THE CONDITION IT IS NOT COPIED, REPRODUCED, RETAINED OR DISCLOSED TO ANY UNAUTHORISED PERSON EITHER WHOLLY OR IN PART WITHOUT PRIOR CONSENT IN WRITING OF fitzpatrick+partners.  
DO NOT SCALE DRAWINGS. CHECK DIMENSIONS BEFORE COMMENCING WORK.  
DRAWINGS SHOW DESIGN INTENT ONLY. SHOP DRAWINGS ARE TO BE PROVIDED FOR APPROVAL PRIOR TO CONSTRUCTION OR MANUFACTURE. INCONSISTENCIES ARE TO BE REPORTED TO fitzpatrick + partners.

REV.	DATE	DESCRIPTION
04	17/01/20	FOR REVIEW
05	23/01/20	FOR REVIEW
06	24/04/20	FOR REVIEW
07	07/05/20	SSDA SUBMISSION

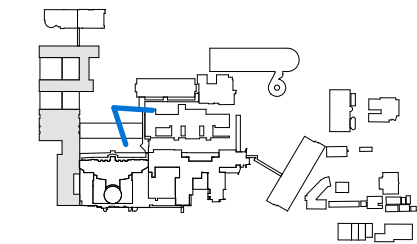
CHK	PROJECT
RP	LIVERPOOL HEALTH & ACADEMIC PRECINCT
RP	ELIZABETH STREET LIVERPOOL NSW
RP	CLIENT
RP	HEALTH INFRASTRUCTURE
RP	14/77 PACIFIC HWY, NORTH SYDNEY NSW 2060

PROJECT NORTH	SCALE
25mm ON ORIGINAL	

DRAWING
3D VIEW: CORNER OF GOULBURN AND CAMPBELL ST
PRINT DATE
8/05/2020

PROJECT NO.	DRAWING NO.	ISSUE
21807	A-SSDA-MW-36	07
STATUS		
SSDA SUBMISSION		





fitzpatrick+partners

© Copyright 2018  
p. +61 (0)2 8274 8200 w. www.fitzpatrickpartners.com  
a. LEVEL 6, 156 CLARENCE STREET, SYDNEY 2000, AUSTRALIA

THIS DRAWING IS ISSUED UPON THE CONDITION IT IS NOT COPIED, REPRODUCED, RETAINED OR DISCLOSED TO ANY UNAUTHORISED PERSON EITHER WHOLLY OR IN PART WITHOUT PRIOR CONSENT IN WRITING OF fitzpatrick+partners.  
DO NOT SCALE DRAWINGS. CHECK DIMENSIONS BEFORE COMMENCING WORK.  
DRAWINGS SHOW DESIGN INTENT ONLY. SHOP DRAWINGS ARE TO BE PROVIDED FOR APPROVAL PRIOR TO CONSTRUCTION OR MANUFACTURE. INCONSISTENCIES ARE TO BE REPORTED TO fitzpatrick + partners.

REV.	DATE	DESCRIPTION
04	17/01/20	FOR REVIEW
05	23/01/20	FOR REVIEW
06	24/04/20	FOR REVIEW
07	07/05/20	SSDA SUBMISSION

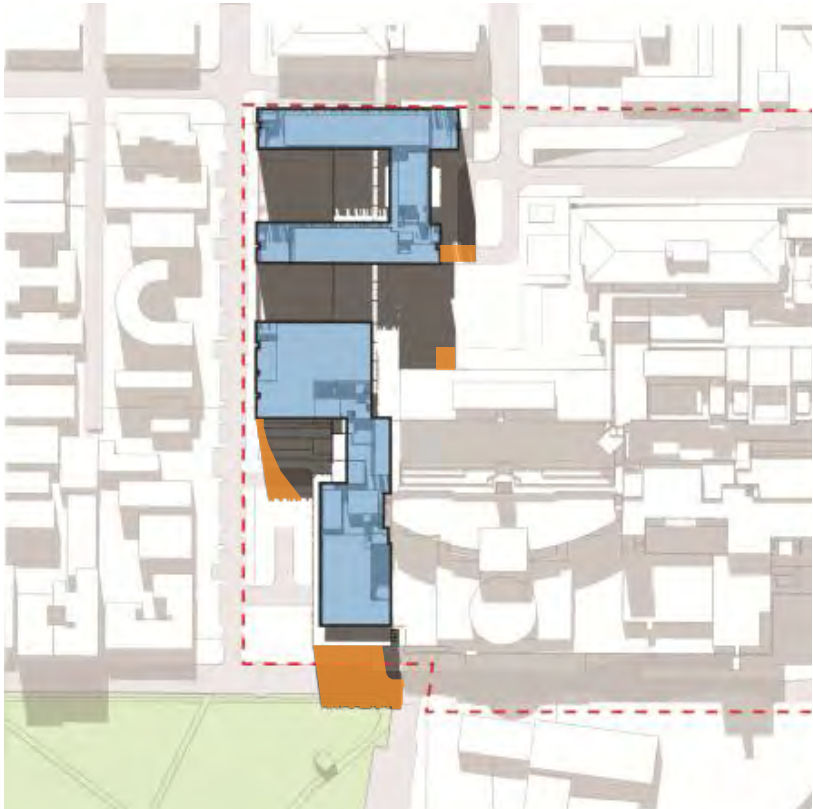
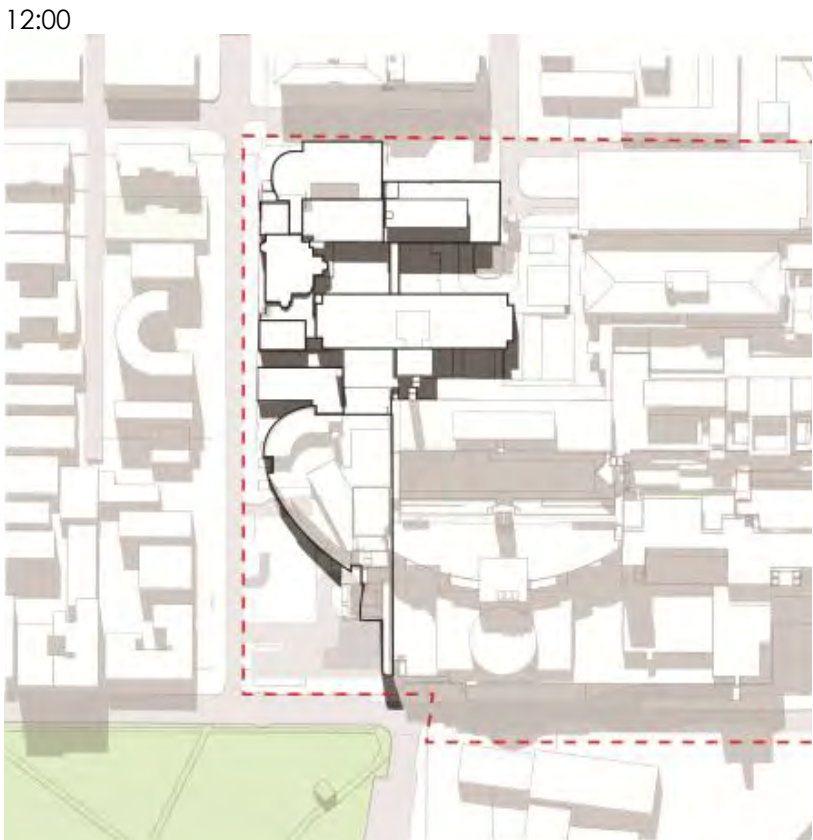
CHK	PROJECT
RP	LIVERPOOL HEALTH & ACADEMIC PRECINCT
RP	ELIZABETH STREET LIVERPOOL NSW
RP	CLIENT
RP	HEALTH INFRASTRUCTURE
RP	14/77 PACIFIC HWY, NORTH SYDNEY NSW 2060

PROJECT NORTH	SCALE
25mm ON ORIGINAL	

DRAWING
3D VIEW: FORBES STREET
COURTYARD
PRINT DATE
8/05/2020

PROJECT NO.	DRAWING NO.	ISSUE
21807	A-SSDA-MW-37	07
STATUS		
SSDA SUBMISSION		





additional shadow impact on site

AMENDMENTS	REV.	DATE
	04	17/01/20
	05	23/01/20
	06	24/04/20
	07	07/05/20

DESCRIPTION  
FOR REVIEW  
FOR REVIEW  
FOR REVIEW  
SSDA SUBMISSION

CHK  
RP  
RP  
RP  
RP

PROJECT  
LIVERPOOL HEALTH & ACADEMIC PRECINCT  
ELIZABETH STREET LIVERPOOL NSW  
CLIENT  
HEALTH INFRASTRUCTURE  
14/77 PACIFIC HWY, NORTH SYDNEY NSW 2060

PROJECT NORTH  
SCALE  
25mm ON ORIGINAL

DRAWING  
SHADOW DIAGRAMS  
PRINT DATE  
8/05/2020

PROJECT NO. 21807	DRAWING NO. A-SSDA-MW-38	ISSUE 07
STATUS SSDA SUBMISSION		





CORNER OF GOULBURN AND CAMPBELL ST

 Outline of proposed works


fitzpatrick+partners

© Copyright 2018  
p. +61 (0)2 8274 8200 w. www.fitzpatrickpartners.com  
a. LEVEL 6, 156 CLARENCE STREET, SYDNEY 2000, AUSTRALIA

THIS DRAWING IS ISSUED UPON THE CONDITION IT IS NOT COPIED, REPRODUCED, RETAINED OR DISCLOSED TO ANY UNAUTHORISED PERSON EITHER WHOLLY OR IN PART WITHOUT PRIOR CONSENT IN WRITING OF fitzpatrick+partners.  
DO NOT SCALE DRAWINGS. CHECK DIMENSIONS BEFORE COMMENCING WORK.  
DRAWINGS SHOW DESIGN INTENT ONLY. SHOP DRAWINGS ARE TO BE PROVIDED FOR APPROVAL PRIOR TO CONSTRUCTION OR MANUFACTURE.  
INCONSISTENCIES ARE TO BE REPORTED TO fitzpatrick + partners.

AMENDMENTS		DESCRIPTION
REV.	DATE	
04	17/01/20	FOR REVIEW
05	23/01/20	FOR REVIEW
06	24/04/20	FOR REVIEW
07	07/05/20	SSDA SUBMISSION

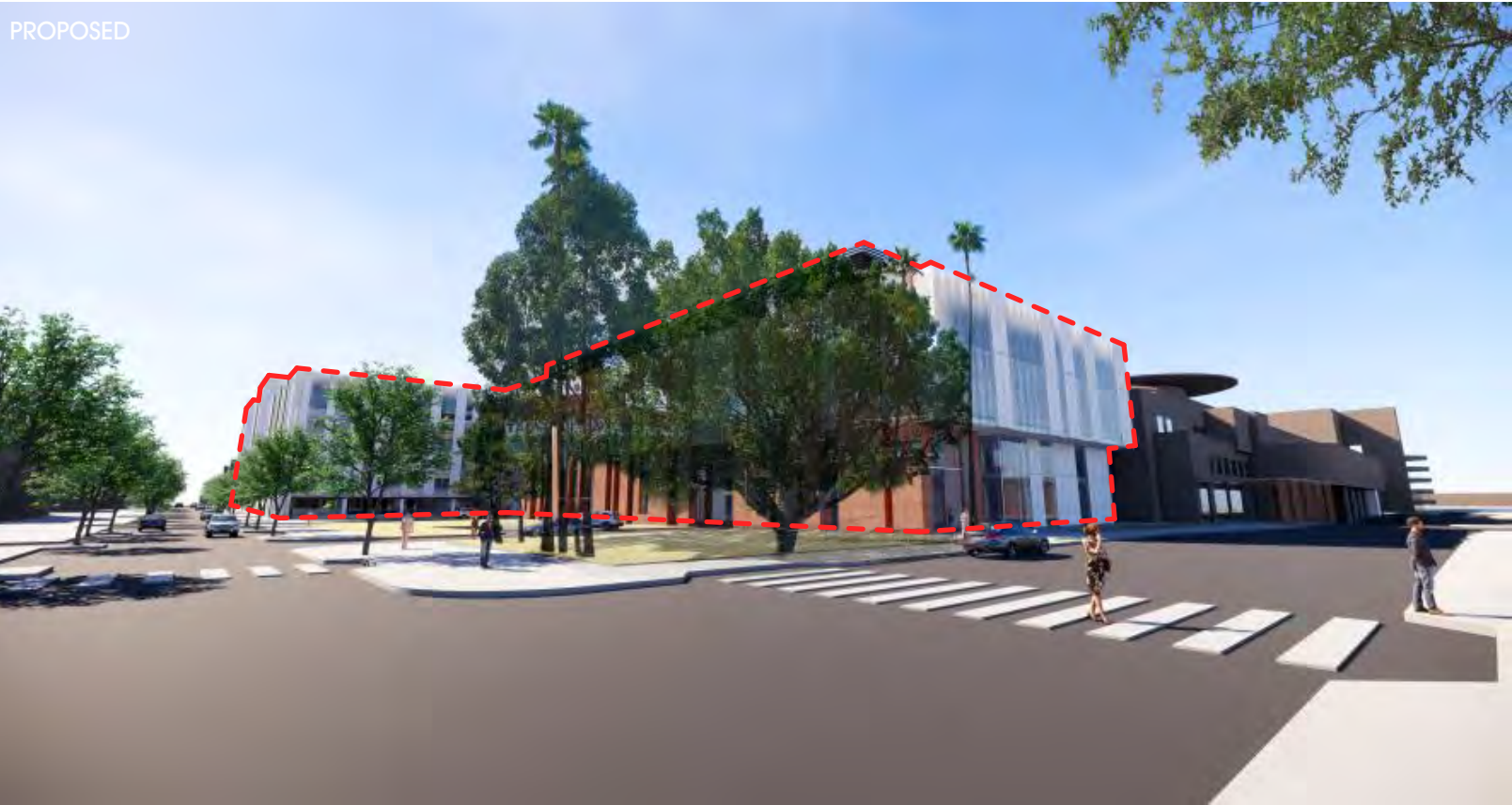
CHK RP RP RP RP	PROJECT
	LIVERPOOL HEALTH & ACADEMIC PRECINCT
	ELIZABETH STREET LIVERPOOL NSW
	CLIENT
HEALTH INFRASTRUCTURE	14/77 PACIFIC HWY, NORTH SYDNEY NSW 2060

PROJECT NORTH	SCALE
	
25mm ON ORIGINAL	

DRAWING
VISUAL IMPACT ASSESSMENT
PRINT DATE
8/05/2020

PROJECT NO.	DRAWING NO.	ISSUE
21807	A-SSDA-MW-39	07
STATUS		SSDA SUBMISSION





CORNER OF GOULBURN AND ELIZABETH STREET

 Outline of proposed works


fitzpatrick+partners

© Copyright 2018  
p. +61 (0)2 8274 8200 w. www.fitzpatrickpartners.com  
a. LEVEL 6, 156 CLARENCE STREET, SYDNEY 2000, AUSTRALIA

THIS DRAWING IS ISSUED UPON THE CONDITION IT IS NOT COPIED, REPRODUCED, RETAINED OR DISCLOSED TO ANY UNAUTHORISED PERSON EITHER WHOLLY OR IN PART WITHOUT PRIOR CONSENT IN WRITING OF fitzpatrick+partners.  
DO NOT SCALE DRAWINGS. CHECK DIMENSIONS BEFORE COMMENCING WORK.  
DRAWINGS SHOW DESIGN INTENT ONLY. SHOP DRAWINGS ARE TO BE PROVIDED FOR APPROVAL PRIOR TO CONSTRUCTION OR MANUFACTURE. INCONSISTENCIES ARE TO BE REPORTED TO fitzpatrick + partners.

AMENDMENTS		DESCRIPTION
REV.	DATE	
04	17/01/20	FOR REVIEW
05	23/01/20	FOR REVIEW
06	24/04/20	FOR REVIEW
07	07/05/20	SSDA SUBMISSION

CHK RP RP RP RP	PROJECT
	LIVERPOOL HEALTH & ACADEMIC PRECINCT
	ELIZABETH STREET LIVERPOOL NSW
	CLIENT
	HEALTH INFRASTRUCTURE
	14/77 PACIFIC HWY, NORTH SYDNEY NSW 2060

PROJECT NORTH	SCALE
	
25mm ON ORIGINAL	

DRAWING
VISUAL IMPACT ASSESSMENT
PRINT DATE
8/05/2020

PROJECT NO.	DRAWING NO.	ISSUE
21807	A-SSDA-MW-40	07
STATUS		
SSDA SUBMISSION		





CORNER OF FORBES AND CAMPBELL STREET

 Outline of proposed works


fitzpatrick+partners

© Copyright 2018  
p. +61 (0)2 8274 8200 w. www.fitzpatrickpartners.com  
a. LEVEL 6, 156 CLARENCE STREET, SYDNEY 2000, AUSTRALIA

THIS DRAWING IS ISSUED UPON THE CONDITION IT IS NOT COPIED, REPRODUCED, RETAINED OR DISCLOSED TO ANY UNAUTHORISED PERSON EITHER WHOLLY OR IN PART WITHOUT PRIOR CONSENT IN WRITING OF fitzpatrick+partners.  
DO NOT SCALE DRAWINGS. CHECK DIMENSIONS BEFORE COMMENCING WORK.  
DRAWINGS SHOW DESIGN INTENT ONLY. SHOP DRAWINGS ARE TO BE PROVIDED FOR APPROVAL PRIOR TO CONSTRUCTION OR MANUFACTURE. INCONSISTENCIES ARE TO BE REPORTED TO fitzpatrick + partners.

AMENDMENTS		
REV.	DATE	DESCRIPTION
04	17/01/20	FOR REVIEW
05	23/01/20	FOR REVIEW
06	24/04/20	FOR REVIEW
07	07/05/20	SSDA SUBMISSION

CHK RP RP RP RP	PROJECT
	LIVERPOOL HEALTH & ACADEMIC PRECINCT
	ELIZABETH STREET LIVERPOOL NSW
	CLIENT
	HEALTH INFRASTRUCTURE
	14/77 PACIFIC HWY, NORTH SYDNEY NSW 2060

PROJECT NORTH	SCALE
	
25mm ON ORIGINAL	

DRAWING
VISUAL IMPACT ASSESSMENT
PRINT DATE
8/05/2020

PROJECT NO.	DRAWING NO.	ISSUE
21807	A-SSDA-MW-41	07
STATUS		
SSDA SUBMISSION		





AERIAL VIEW

 Outline of proposed works


fitzpatrick+partners

© Copyright 2018  
p. +61 (0)2 8274 8200 w. www.fitzpatrickpartners.com  
a. LEVEL 6, 156 CLARENCE STREET, SYDNEY 2000, AUSTRALIA

THIS DRAWING IS ISSUED UPON THE CONDITION IT IS NOT COPIED, REPRODUCED, RETAINED OR DISCLOSED TO ANY UNAUTHORISED PERSON EITHER WHOLLY OR IN PART WITHOUT PRIOR CONSENT IN WRITING OF fitzpatrick+partners.  
DO NOT SCALE DRAWINGS. CHECK DIMENSIONS BEFORE COMMENCING WORK.  
DRAWINGS SHOW DESIGN INTENT ONLY. SHOP DRAWINGS ARE TO BE PROVIDED FOR APPROVAL PRIOR TO CONSTRUCTION OR MANUFACTURE. INCONSISTENCIES ARE TO BE REPORTED TO fitzpatrick + partners.

AMENDMENTS		
REV.	DATE	DESCRIPTION
04	17/01/20	FOR REVIEW
05	23/01/20	FOR REVIEW
06	24/04/20	FOR REVIEW
07	07/05/20	SSDA SUBMISSION

CHK RP RP RP RP	PROJECT
	LIVERPOOL HEALTH & ACADEMIC PRECINCT
	ELIZABETH STREET LIVERPOOL NSW
	CLIENT
	HEALTH INFRASTRUCTURE
	14/77 PACIFIC HWY, NORTH SYDNEY NSW 2060

PROJECT NORTH	SCALE
	

DRAWING
VISUAL IMPACT ASSESSMENT
PRINT DATE
8/05/2020

PROJECT NO.	DRAWING NO.	ISSUE
21807	A-SSDA-MW-42	07
STATUS		SSDA SUBMISSION