

ALLEANZA ARCHITECTURE\_REVISION\_K\_210905  
ALLEANZA ARCHITECTURE\_REVISION\_J\_200306  
ALLEANZA ARCHITECTURE\_REVISION\_H\_200305  
ALLEANZA ARCHITECTURE\_REVISION\_G\_200305  
ALLEANZA ARCHITECTURE\_REVISION\_F\_200228  
ALLEANZA ARCHITECTURE\_REVISION\_E\_200227  
ALLEANZA ARCHITECTURE\_REVISION\_D\_200225  
ALLEANZA ARCHITECTURE\_REVISION\_C\_200224  
ALLEANZA ARCHITECTURE\_REVISION\_B\_200221  
ALLEANZA ARCHITECTURE\_REVISION\_A\_200220

# Westmead Catholic Community SSDA Architectural Report



APPROACHING VIEW FROM DARCY ROAD - WEST

Discipline	
Architecture	Alleanza Architecture
Urban Planner	Ethos Urban
Arborist	TreeIQ
Acoustic	JHA Services
Access	Morris Goding Consulting
Aviation	Avlaw
BCA	Blackett Maguire & Goldsmith
Civil Engineer	Northrop Consulting Engineers
Cultural Heritage	Comber Consultants
Ecology	Cumberland Ecology
Electrical	Erbas
ESD	Erbas Sustain
Fire	GHD
Geotechnical	Martens & Associates
Hydraulic	Erbas
Landscape	Ground Ink
Mechanical	Erbas
Quantity Surveyor	WT Partnership
Surveyor	Vince Morgan Surveyors
Structural	Northrop Consulting Engineers
Traffic	The Transport Planning Partnership
Waste Management	Elephants Foot



	Pages
1.0 Executive Summary_____	5-6
2.0 Site Analysis _____	7-20
3.0 Design	
3.1 Mission and Values_____	22
3.2 Parish Church_____	23-26
3.3 Education _____	27-36
3.4 Resource Centre, CELC & School Administration _____	37-39
4.0 Response to Education SEPP - Design Quality Principles _____	41-55
5.0 CELC - Compliance Statement_____	56-65
6.0 General Considerations_____	67-69



# 1.0

## Executive Summary

# 1.0 Executive Summary

## Project Overview

The Westmead Catholic Community Project has been driven by the vision of co-locating and connecting the future users of the site in conjunction with the principle of *Learning Drives Design*.

In addition to the driving principles, there are undeniable and unmet Community needs and demands included, but not limited to:

- playground availability risk for the existing Sacred Heart Primary School located at Ralph Street
- enrollment demands exceeding the existing schools' capacity with around 500+ enrollment applications declined yearly

To address the above principles and demands, Project 1, Stage 1 being the subject of this SSDA proposes the following:

- Relocate the Westmead Sacred Heart Parish and Sacred Heart Primary School from their existing location to the proposed Westmead Catholic Community (WCC) site.
- Co-locate and connect four highly recognised schools:
  - Sacred Heart Primary School (Westmead)
  - Mother Teresa Primary School (Westmead)
  - Parramatta Marist Boys High School
  - Catherine McAuley Secondary Girls School
- A new K-6 multi-level Primary School
- Conversion of the ground floor of existing Primary School for a Catholic Early Learning Centre (CELC), Pre-6 school administration and Resource Centre.

The following Design Statement outlines the briefing provided by the Catholic Education Diocese of Parramatta (CEDP), as well as the Sacred Heart Parish. Furthermore, it identifies how the expert briefing requirements have been adopted through design and built form to formulate the SSDA submission. The design incorporates:

- Teaching and Learning practices being adopted in CEDP schools
- Proposed benchmarking for new K-6 School building against 4 Star Green Star design and other climate responsive design in line with NSW Climate Projections 2020 – 2039 for the new K-6 School Building.
- Consultation with identified Aboriginal parties having cultural knowledge of relevance to the site.

The facilities and landscape have been designed in accordance with relevant Australian Standards and meet the obligations of equitable and dignified access provisions of the Disability Discrimination Act.

### Church

The proposal is for a 400-seat Church and ancillary functions for the Sacred Heart Parish of Westmead. The Parish is currently located at Ralph Street, Westmead but is relocating with Sacred Heart Primary School to the proposed site to form the Westmead Catholic Community.

### School

The proposed K- 6 School Building, incorporating both Sacred Heart Primary School and Mother Teresa Primary School, is an innovative and contemporary school designed to facilitate the latest developments in Teaching and Learning.

The proposed building is a considered response to the Educational Brief and synthesis with local built and natural environment.

The proposed building is a relatively new typology. Constructed open space almost equals enclosed space within a stacked six storey configuration containing integrated, multi-level indoor and outdoor zones.

The proposed landscape design represents a fully integrated three dimensional approach to landscape from ground level throughout the upper levels and roof of the new K-6 School building.

The diversity of play areas, integrated with natural landscape features, will provide a full range of experiential qualities for students, visitors and passers-by.

### CELC

The Catholic Early Learning Centre is proposed to be located on the ground floor of the existing building occupied by Mother Teresa Primary School.

The proposed conversion fully complies with SEPP (Educational Establishments and Child Care Facilities) 2017 and the Child Care Planning Guideline of DoPE, August 2017.

# 2.0

## Site Analysis



District Context

The new facilities are located within a site currently occupied by three schools:

- Parramatta Marist Boys High School
- Catherine McAuley Secondary Girls School
- St Mother Teresa Primary School

LEGEND

Subject site

Train

Light Rail

NW TWAY

Brien Road Precinct

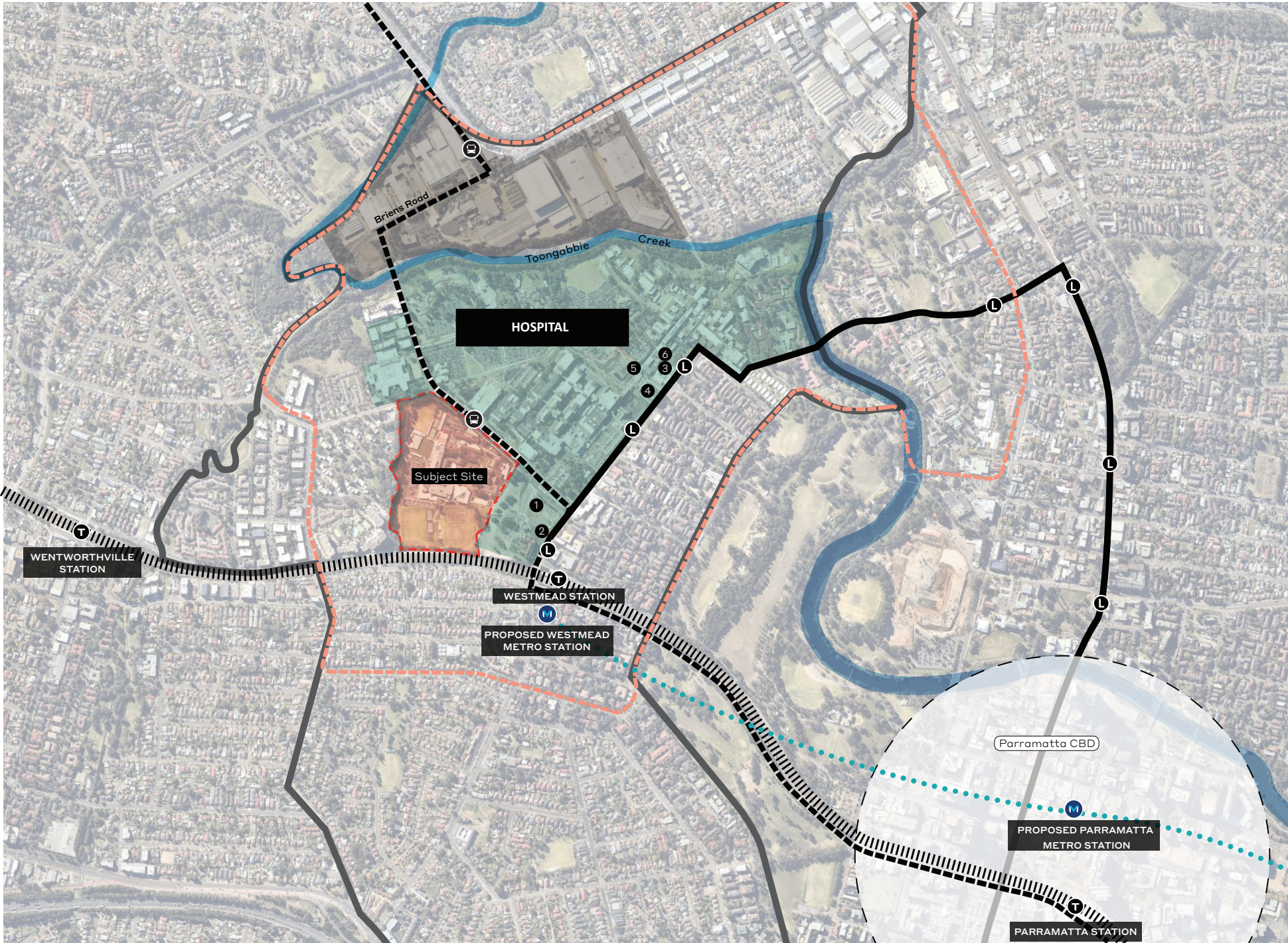
Westmead Health and Education Precinct

Westmead Health and Education Precinct Core

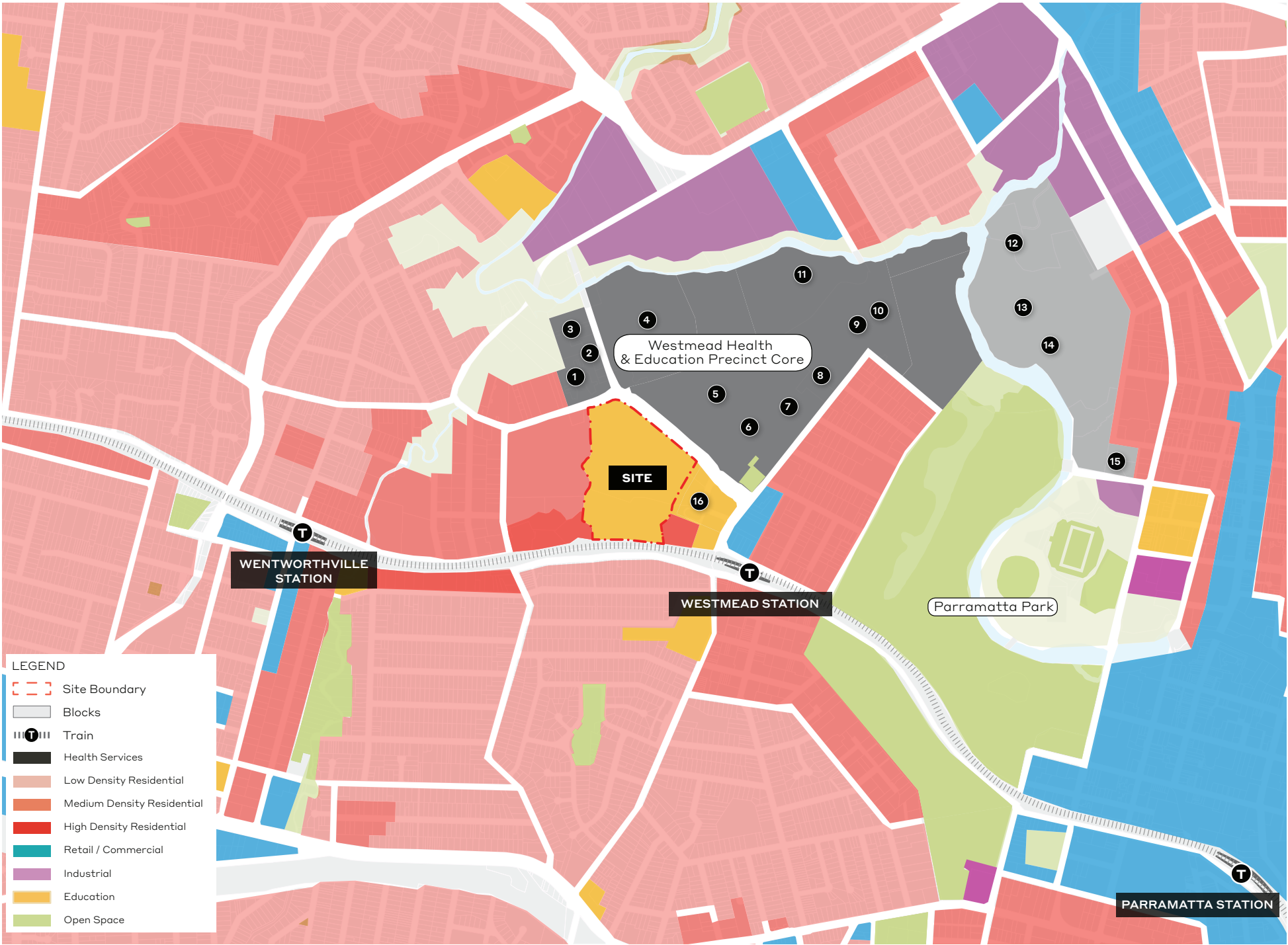
Westmead Priority Precinct (NSW Government)

Toongabbie Creek Corridor

Proposed Metro Alignment





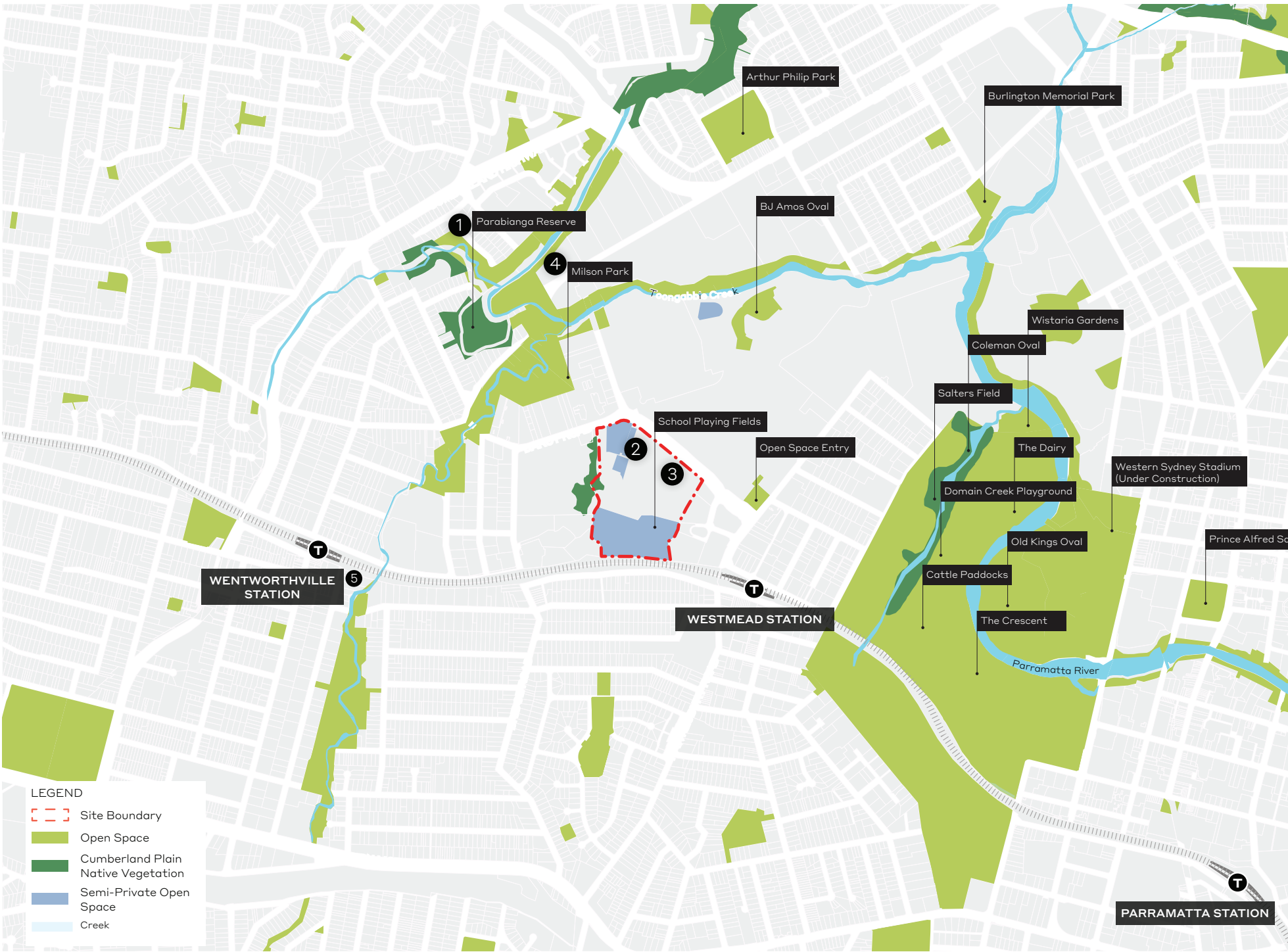


Land Use and Activity

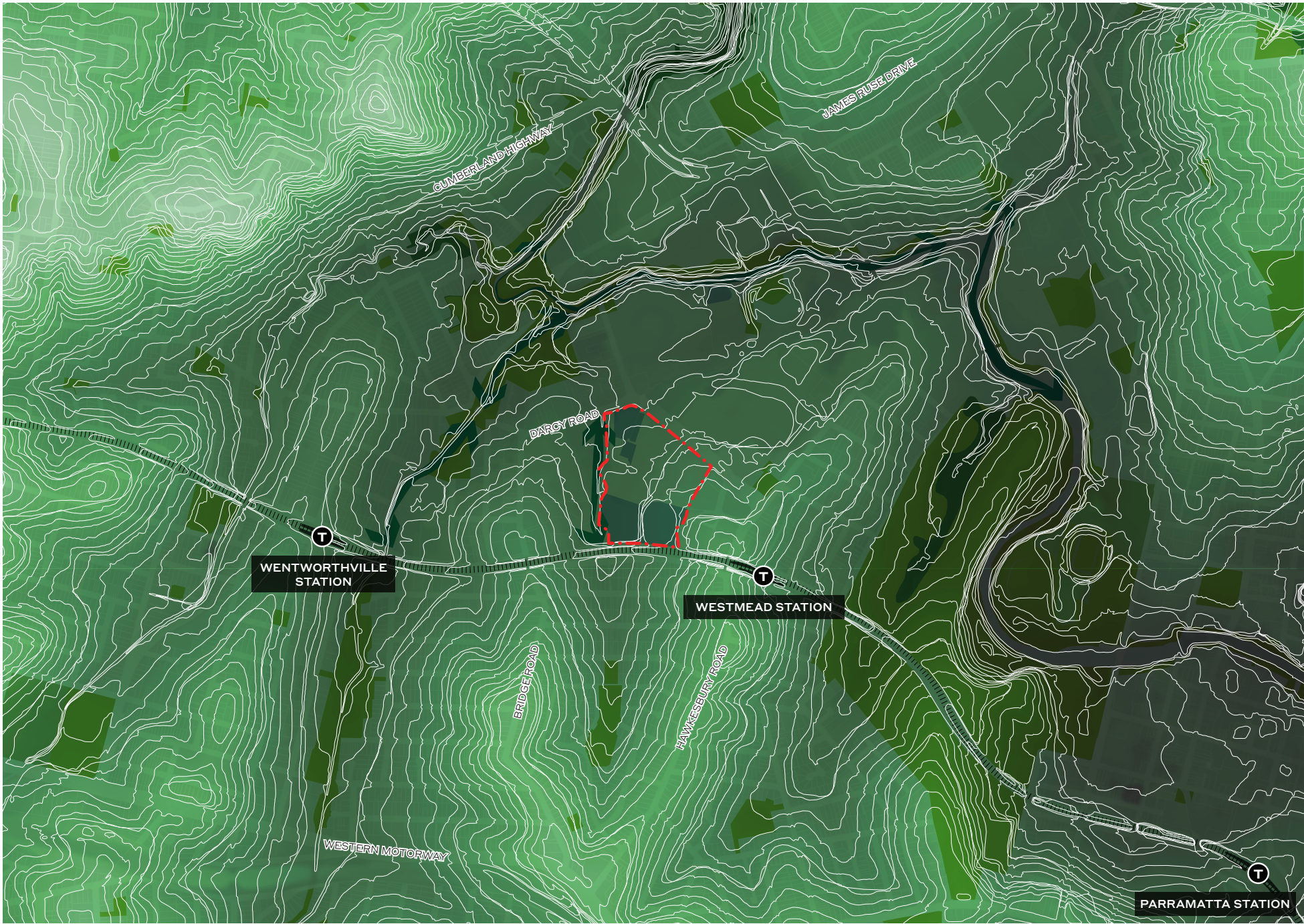
Open Space and Community Facilities

COMMUNITY FACILITIES

- 1 Toongabbie East Public School
- 2 Catherine McAuley High School
- 3 Marist High School
- 4 Whiz Kidz Early Learning Centre & Pre-school Northmead
- 5 Wentworthville Library







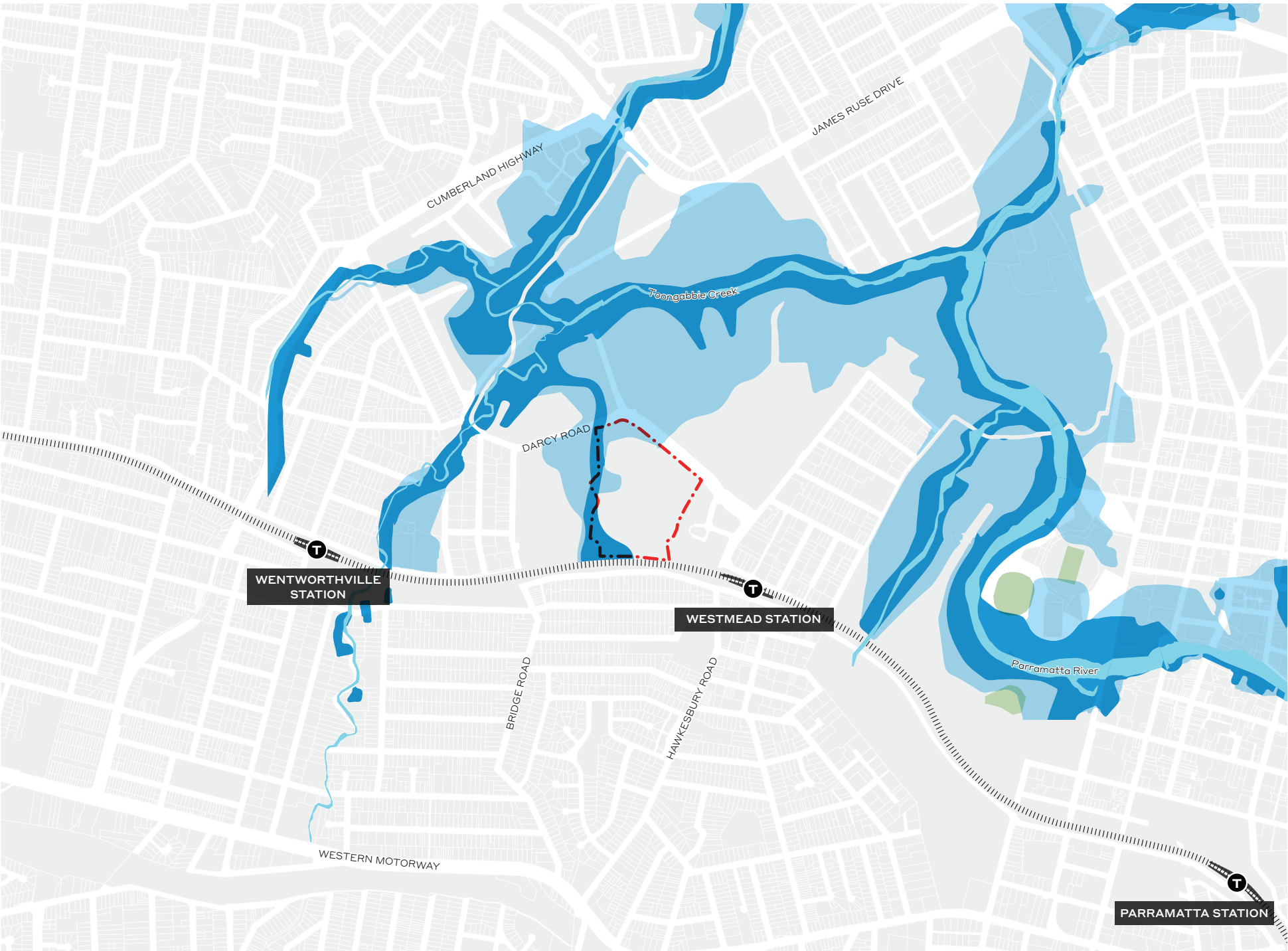
Topography

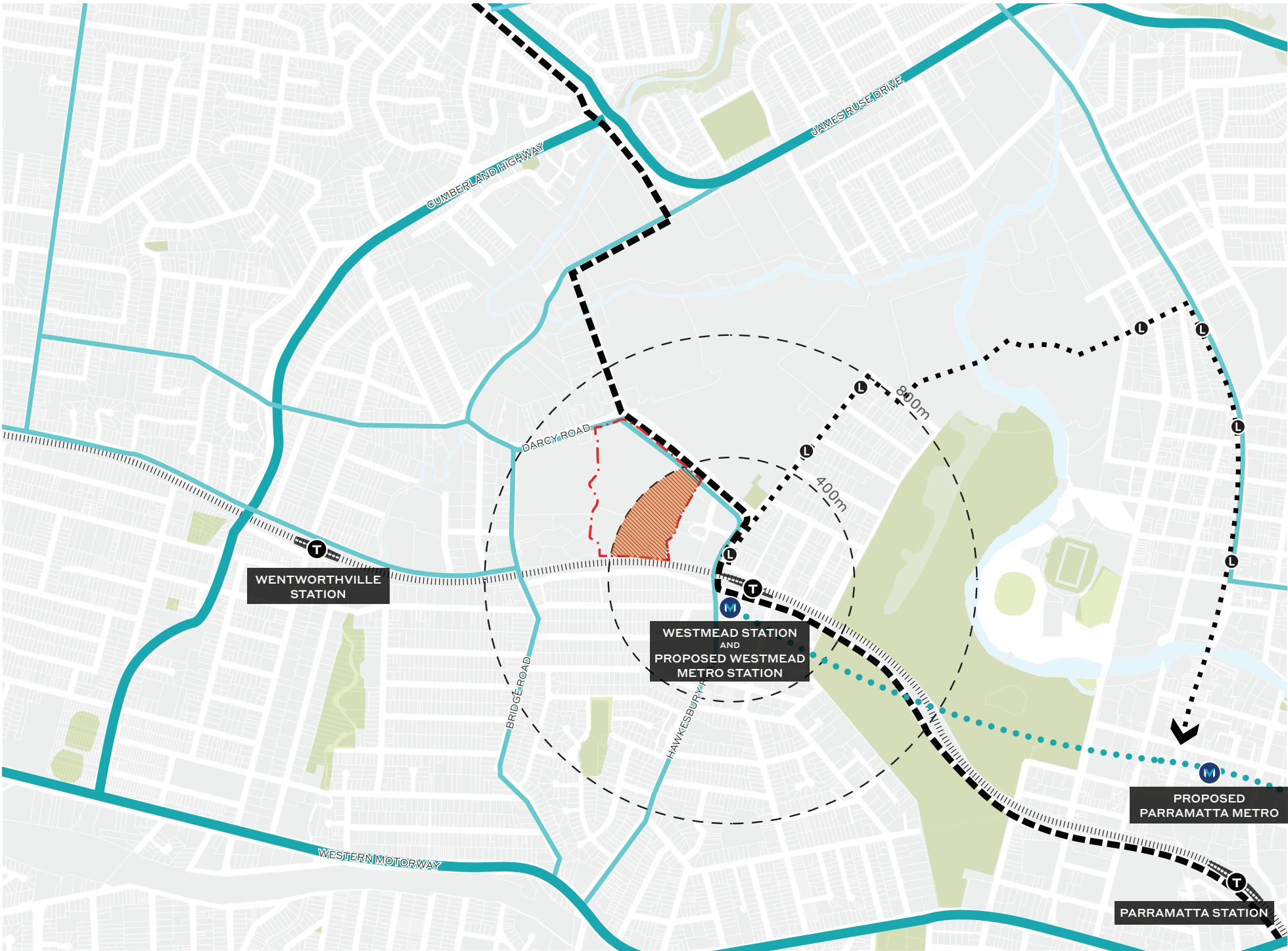
- LEGEND
- Subject Site
  - Train Station
  - Railway Tracks
  - 2m Contour
  - Topography



Flooding

- LEGEND
- Site Boundary
  - 100 Year Flood Extent
  - Probable Maximum Flood Extent
  - Creek





Transport Access

- LEGEND
- Site Boundary
  - Blocks
  - Highway
  - Main Roads
  - NW Tway
  - Proposed Light Rail
  - Approximate Metro Alignment



Pedestrian & Cyclist Movement



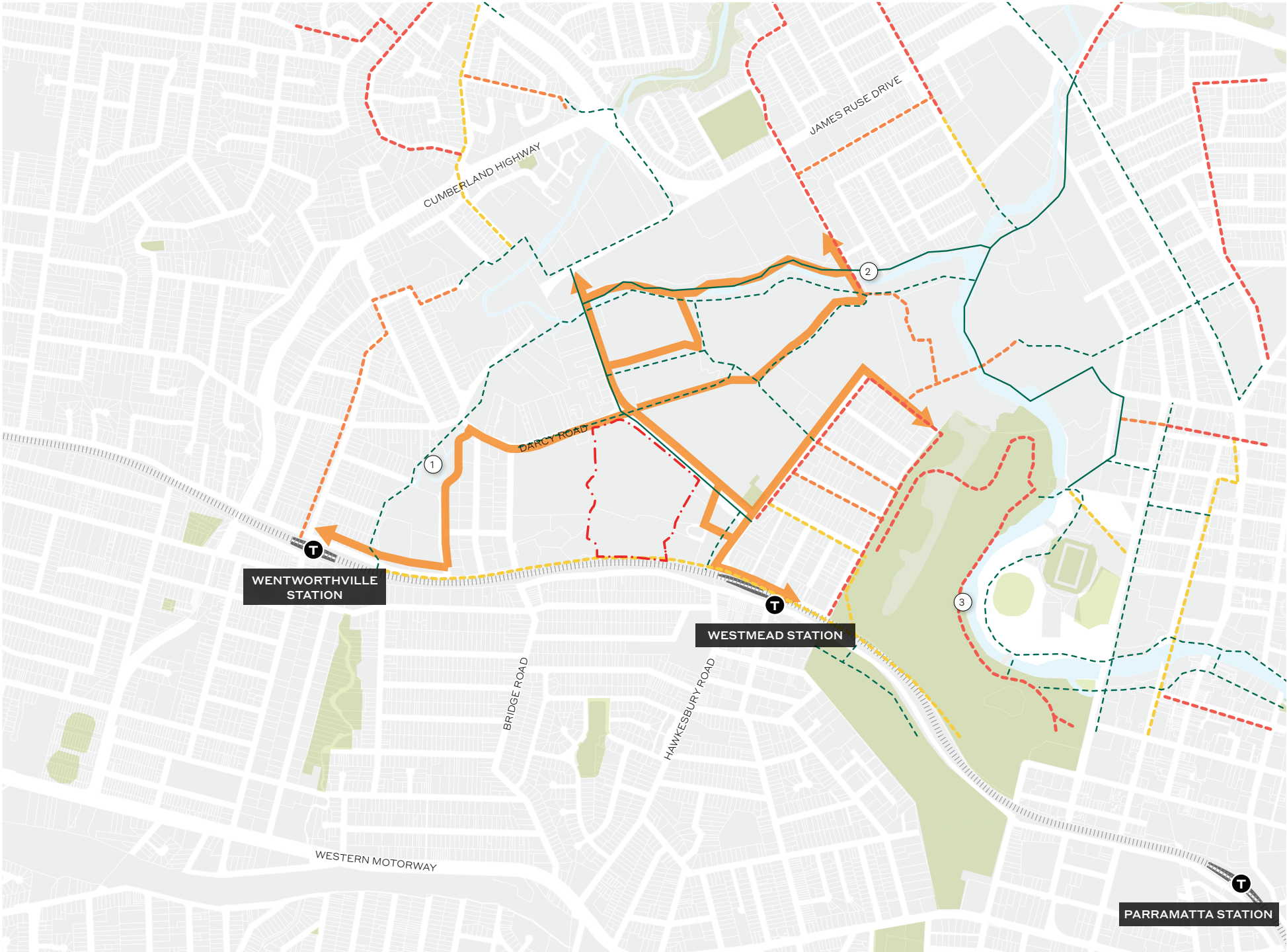
Off road shared path through Shannons Paddock ①

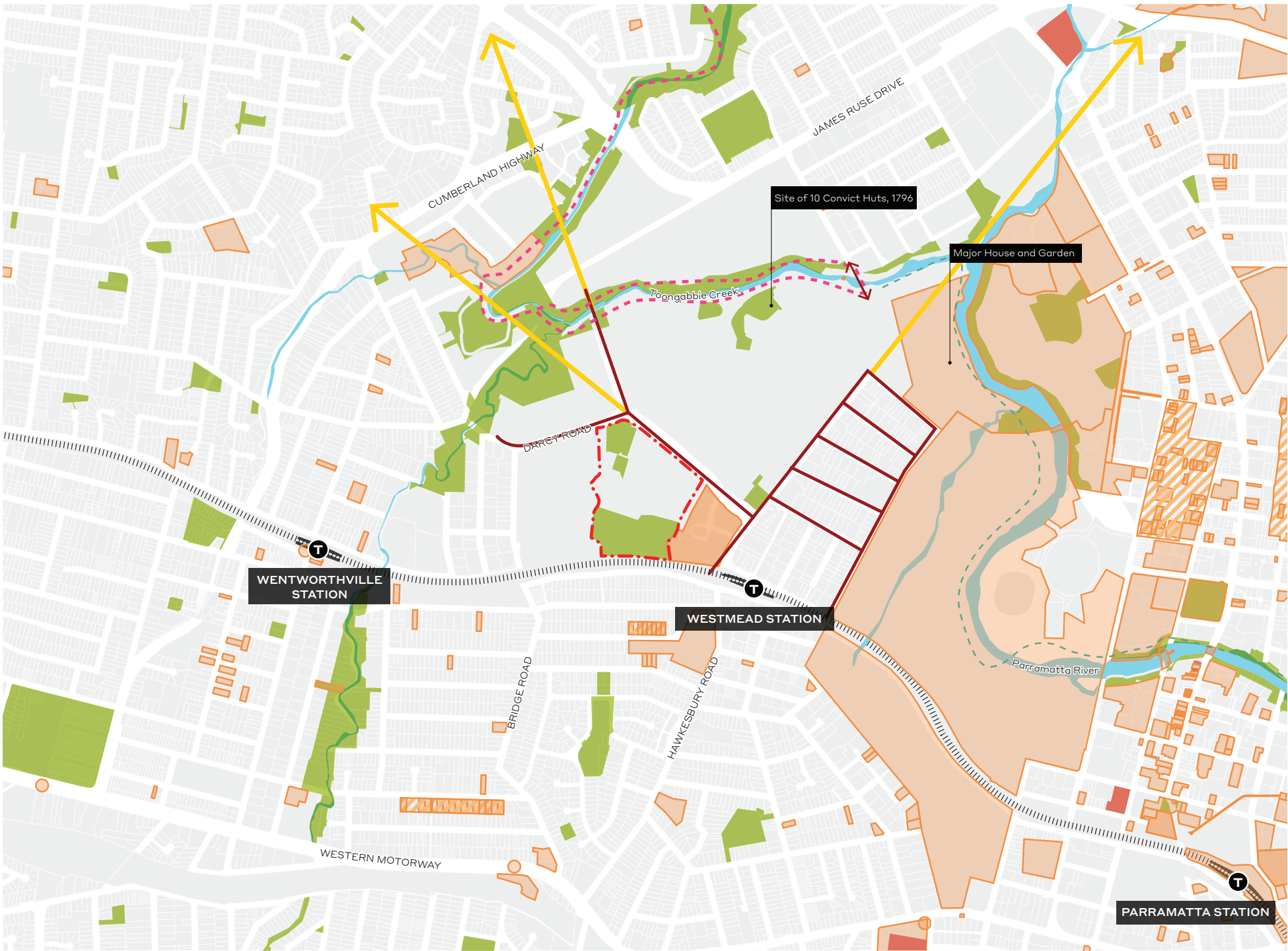
Toongabbie Creek walk ②

On Road Painted Bicycle Lane through Parramatta Park ③

LEGEND

- Site Boundary
- Blocks
- Off Road Separated Path
- Off Road Shared Path
- On Road Painted Bicycle Lane
- On Road Painted Mixed Traffic
- On Road Separated Bicycle Lane





Heritage

- LEGEND
- Site Boundary
  - Blocks
  - Built Form
  - General Heritage Item
  - Conservation Area - Aboriginal
  - Aboriginal Place of Heritage Significance
  - 1859 Road Design
  - Views
  - Governor Philip Walk
  - Redbank Trail



Local Context



1 Mother Teresa Primary School



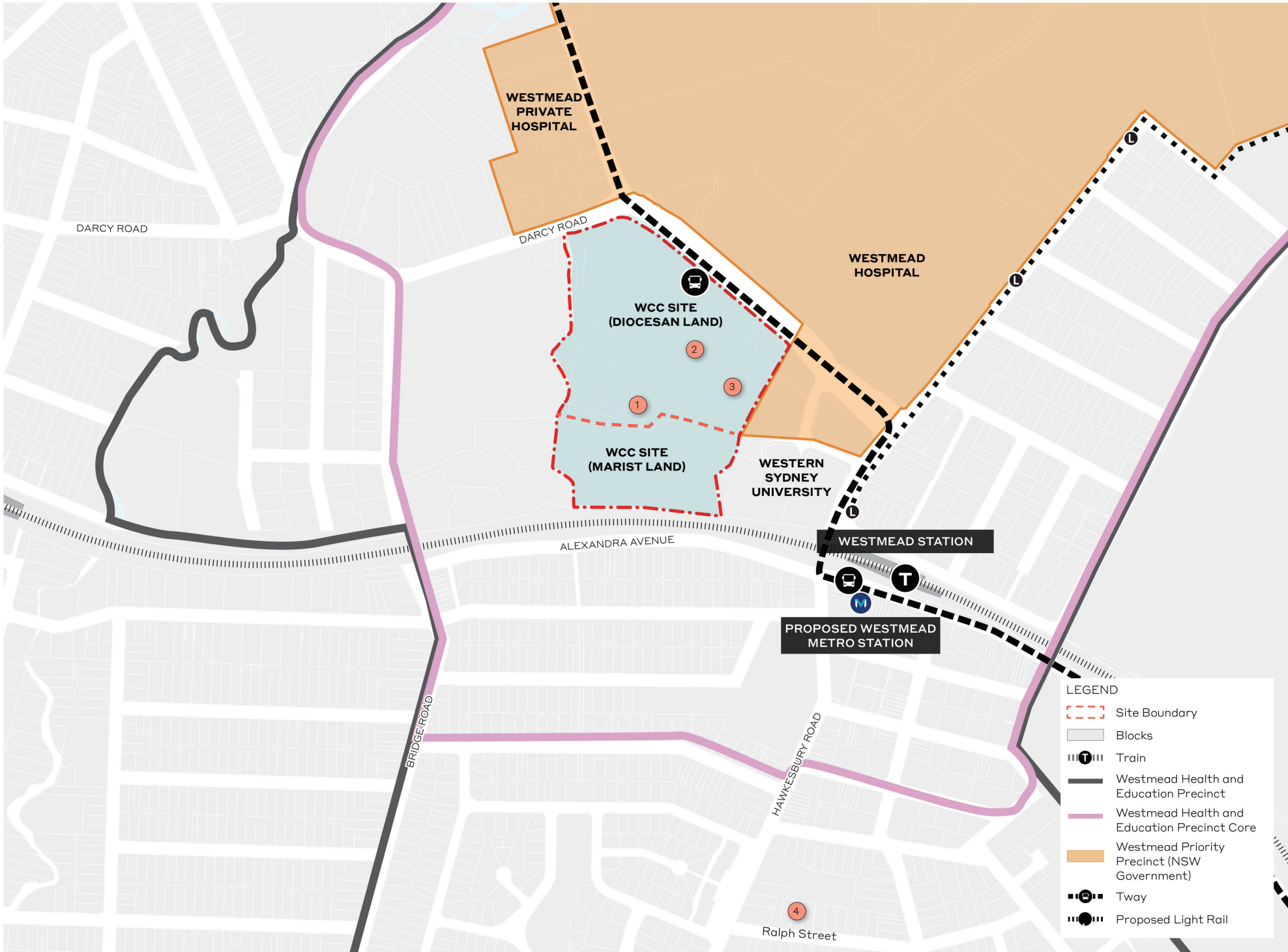
2 Catherine McAuley Westmead



3 Parramatta Marist High School



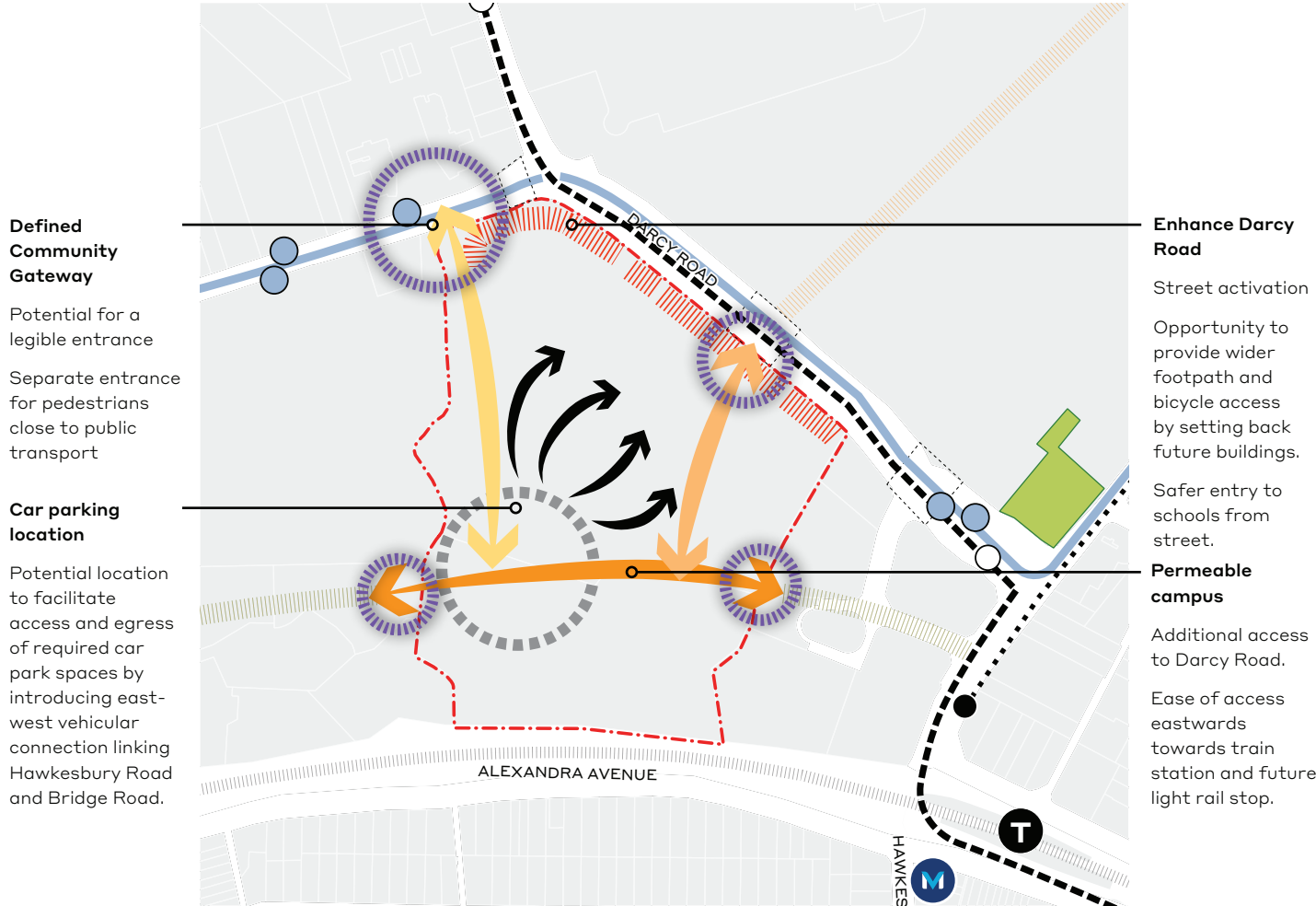
4 Sacred Heart Primary School at Ralph Street



Constraints

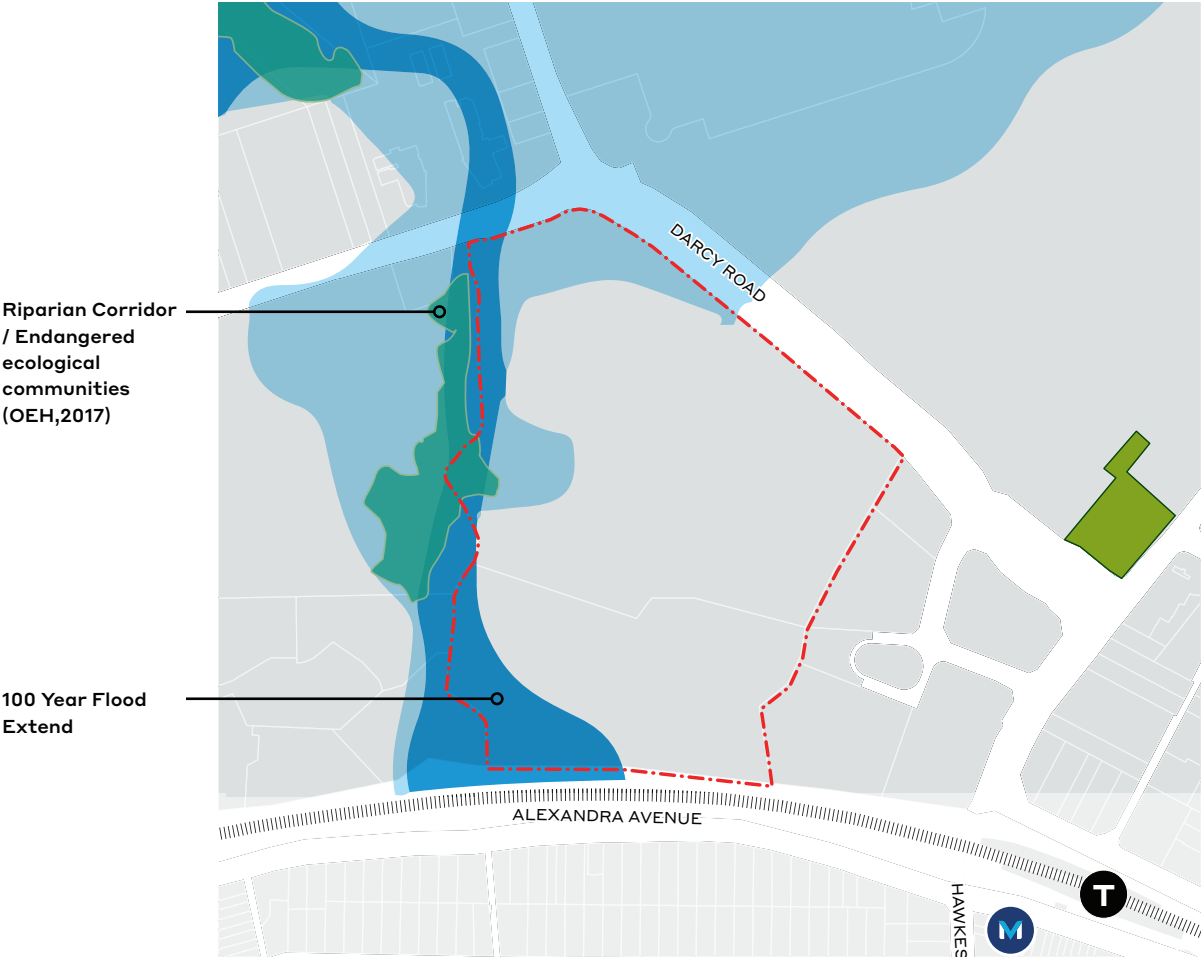


Opportunities



Vegetation & Environment

Constraints



Opportunities

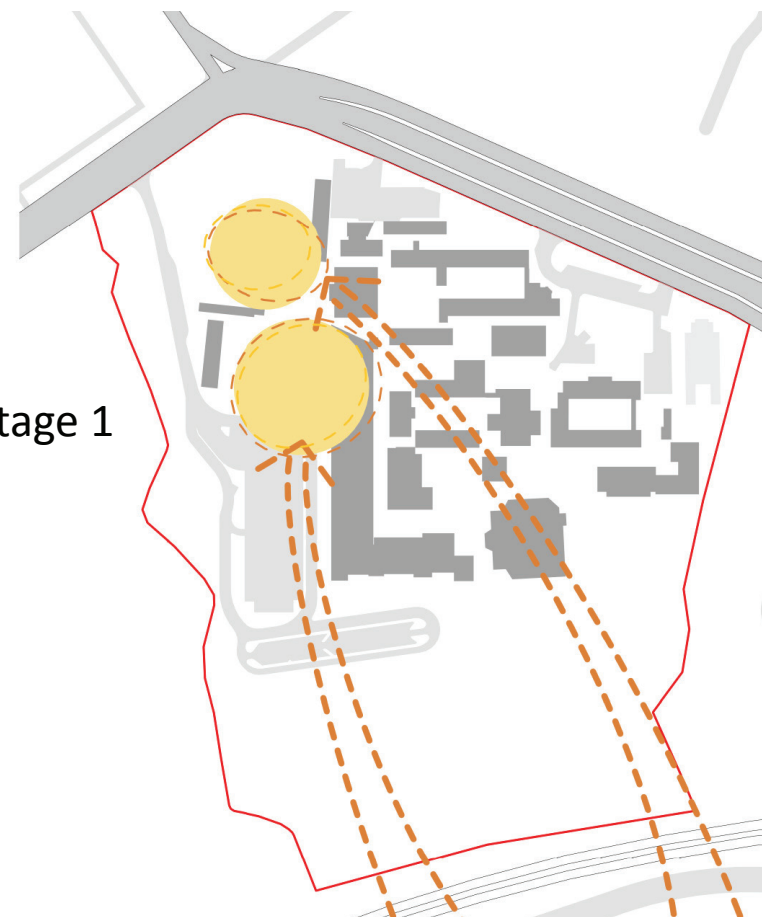




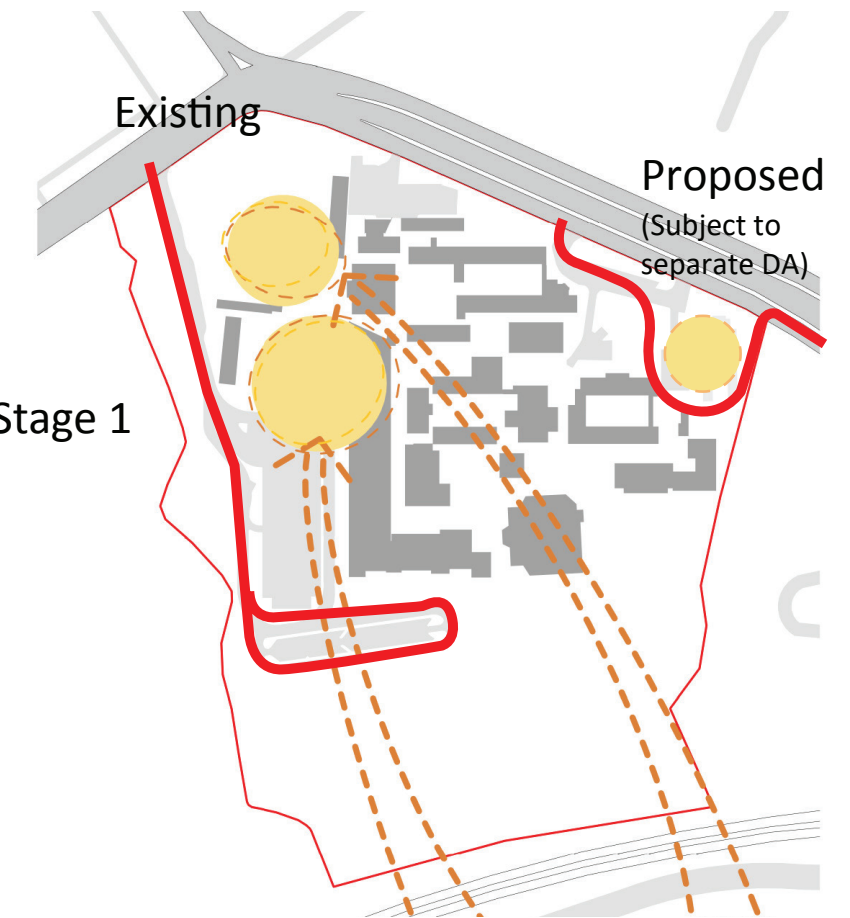
### Other Considerations



Project 1 Stage 1



Project 1 Stage 1



#### Parish Building as a Gateway

- A defined gateway will allow for greater exchange between residents, visitors and the general public, including the larger Westmead Innovation Precinct.
- Positioned in a key corner of the site, the Parish building will deliver a strong sense of place and community for the neighbourhood.

#### Relocate Sacred Heart Primary School from Ralph Street

- Relocate the K-2 School Building (Sacred Heart Primary School at Ralph Street) to join the main site in a manner which will not disrupt existing site functionality but will nevertheless properly integrate with future development opportunities.
- The relocation will encourage community interaction, inter-generational learning and integration of a wider community.

#### Resolve Traffic Issues

- Project 1 Stage 1 must address the issue of additional parking, split traffic loads and vehicular site entry points.
- This resolution is in conjunction with RMS advice.

Project 1 Stage 1

Project 1 - Stage 1

Stage 1 Proposal - Detailed

- A defined site entrance will allow for greater exchange between residents, visitors and the general public.
- Positioned in a key corner of the site, the new Church and Parish Centre will deliver a strong sense of place and community for the neighbourhood.
- The new K-6 School Building is immediately adjacent and will functionally work in conjunction with existing school buildings.



# 3.0

## Design

## 3.1 Design - Mission & Values

### One Church and Mission - Inclusiveness

The Diocese of Parramatta would like to move away from the separate conceptualisation of school and Parish, and instead move towards an understanding that all schools, like all Parishes, are part of the one Church and Mission.

The Diocese is committed to create an integrated faith, learning and evangelising community that collaborates beyond its boundaries with the broader community.

New facilities are to be welcoming, engaging and inclusive of all abilities and identities.

#### Staging Approach to meet needs and demand

Stage 1 responds to:

- the imminent need to relocate the Sacred Heart Primary School from Ralph Street to the Westmead Catholic Community site due to an expiring lease. It will also bring a new Parish that will be a gateway building for the site and local community.
- satisfying the immediate need of the 400+ Primary School enrollment applications declined yearly.

#### Integration of the Westmead Catholic Community within Westmead Innovation Precinct

The Westmead precinct is one of the largest health, education, research and training precincts in Australia and a key provider of jobs for the greater Parramatta and Western Sydney region. It is a fantastic opportunity for the Diocese of Parramatta to be part of the precinct to deliver world-class innovation and services for NSW and Australia.

By co-locating supporting and similar services in one physical location, the WCC provides the opportunity to integrate businesses to the benefit of the stakeholders, the Diocese and the education community.

The intent is to develop a campus with value and added benefit combined with a leading operating model and learning framework.

### COMMITTED TO A COMMON MISSION AND VALUES



An integrated faith, learning and evangelising community that collaborates beyond its boundaries with the broader community

Families enrol and are guided in our community



Introduction

The proposal is for a 400-seat worship space and ancillary functions for the Sacred Heart Parish of Westmead. The Parish is currently located at Ralph Street Westmead but is relocating with Sacred Heart Catholic Primary School to the proposed site to form the Westmead Catholic Community (WCC), also comprising Parramatta Marist and Catherine McAuley High Schools.

The Parish Church is part of the first stage of redevelopment of the site comprising the four Schools and Parish as an integrated community. As noted in the Site Analysis of this Report, the design has been driven by the need for the Parish Church:

- to act as a gateway to the site
- to be an open and welcoming venue for the Westmead Community
- to be located in a setting with an active street frontage and a variety of open spaces

Site

The site for the Church forms the prow of the land that Darcy Road bends around, giving the site visual prominence from Darcy Road, Mons Road and Institute Road. The land immediately west of the site is a riparian corridor straddling a local watercourse. Further west are residential buildings that one would anticipate will be redeveloped into higher-density residential complexes over time. Westmead Private Hospital is on one adjacent street corner and the Westmead Health Precinct is on the other. Catherine McAuley High School fronts Darcy Road to the east of the Church site.

Darcy Road is a busy vehicle thoroughfare that has a distinct lack in pedestrian amenity, partly contributed to by the existing retaining wall bounding the Westmead Catholic Community site.

The site is brownfield development that has previously been cleared and all planting proximate to the proposed Church is of reasonably recent vintage.





# 3.2 Design - Parish Church

## Built Form

The existing site will be reshaped to remove the uninviting retaining wall and create a steeply banked planted berm, on which to site the building. The raking edge to the site affords the Church the appearance of rising up out of the ground and is given a sense of prominence establishing the reason for being for the whole site.

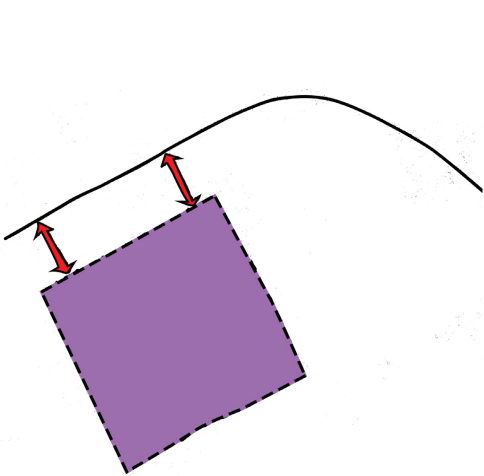
The Church has been aligned with the north-west facing edge of Darcy Road, with its high end to the north side. The cross is used as an address, receiving due prominence at the northern corner and allowing passing people to understand not just the purpose of the building but the wider site, which is entered beside the Church.

The building is conceived as a collection of organic ‘pebble’ forms surrounding a central gathering space for communal worship. The ‘pebbles’ contain the supporting functions of the facility and create a perforated enclosure around the worship hall. The gaps between the pebbles become points where light, ventilation and pedestrian movement occur.

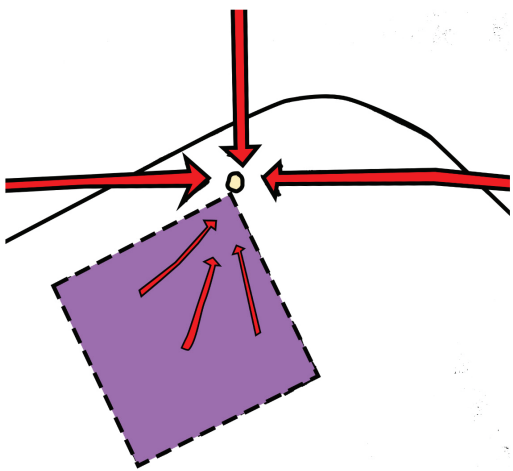
This building, despite fronting Darcy Road, is read from all sides and as such has no ‘back’. As a consequence, all its facades are treated with care and external services are concealed in further ‘pebble’ structures outside the roof line.

The worship space obtains an appropriate volume by a roof that reaches up over the sanctuary. This roof is then surrounded by a skirting verandah that undulates around the four facades.

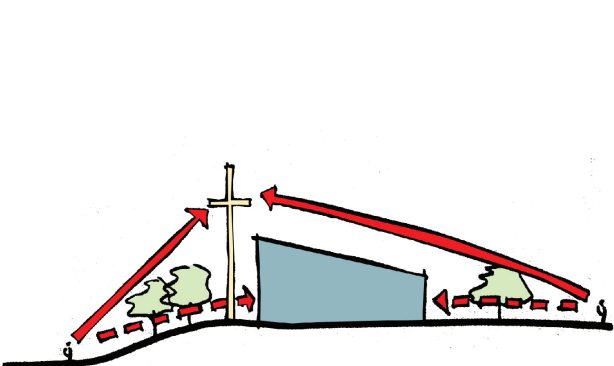
The verandah roof is broken at the sanctuary as it bends up, almost like two hands coming together to grasp the cross. The verandah thins down to a narrow edge, to give a play of light and shade on the undulating form beneath it. The verandah roof sits on a series of closely spaced columns reminiscent of the trunks of trees adjacent.



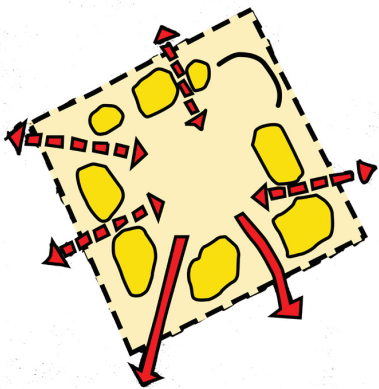
Church aligned to Darcy Road frontage



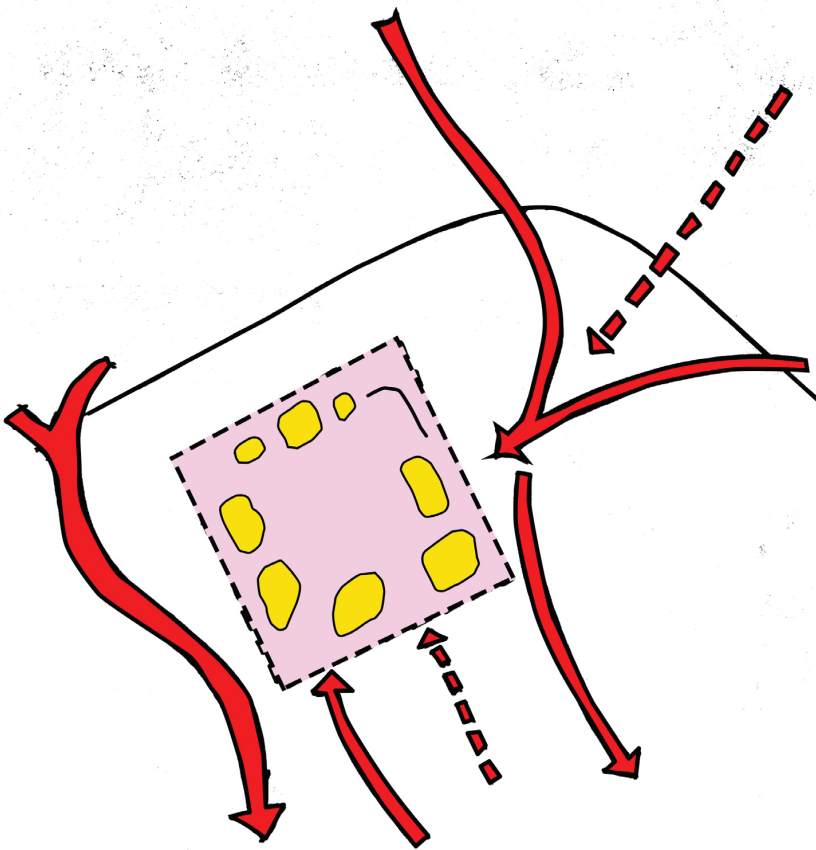
Cross placed on corner for maximum visibility



Cross visible over trees. Building obscured by trees



Perforated plan form allows views in and out of worship hall to community and school



Perforated plan form allows views in and out of worship hall to community and school

Materials

The Church materials are a play of heavy and light; transparent and opaque; textured and flat; colour and neutral. The ‘pebbles’ are formed from an oxidized concrete given a series of natural earthy colours, almost as if they have risen from the ground below. The Sanctuary is given special prominence by the use of deep terracotta coloured cladding representing not just the earth below but also religious symbolism important to the Catholic Community.

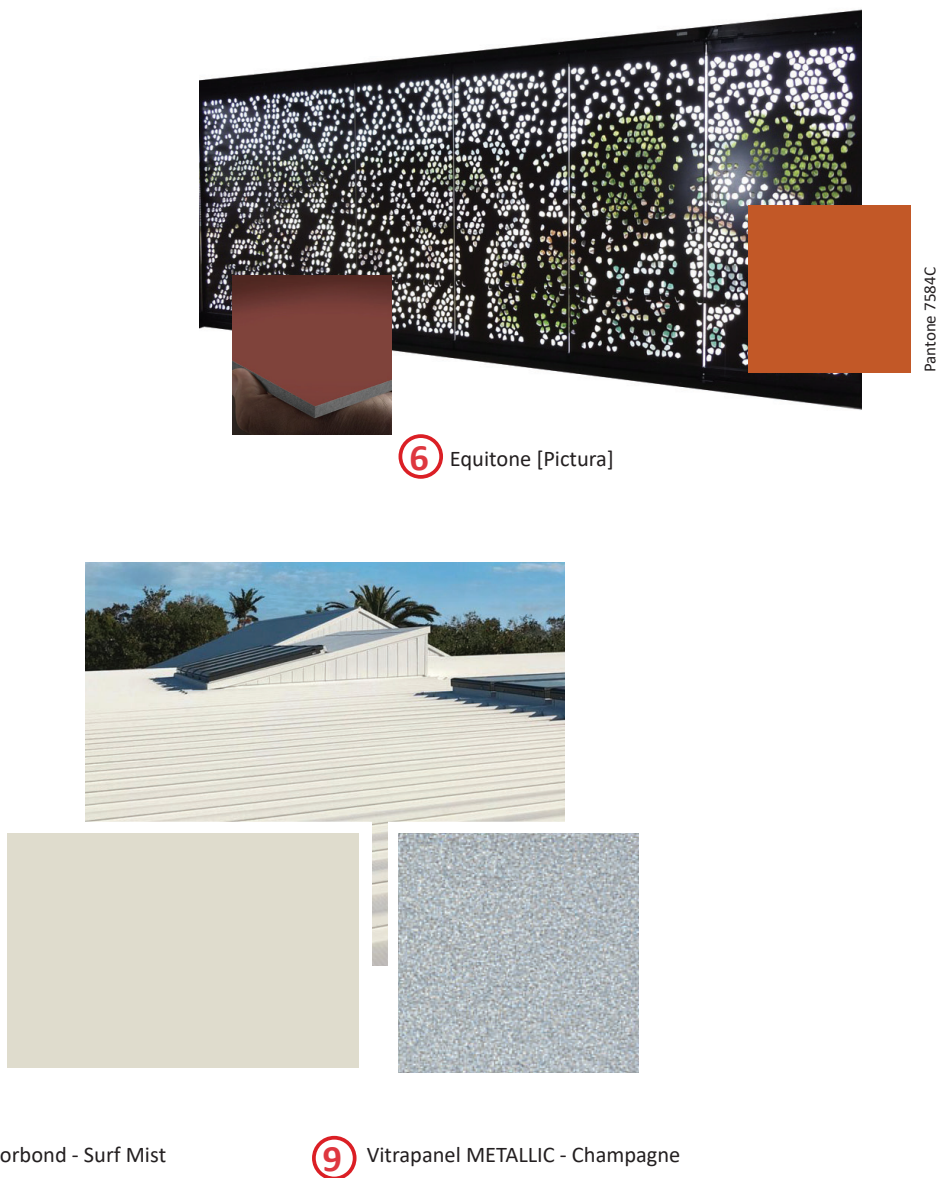
The verandah soffit is a light satin finish to reflect the colours of the pebbles and garden below it. The Worship space cladding and roof is monolithic colour and form but given a light hue to help it dematerialize above the heavier base.

Landscape

The building is conceived very much to be hidden below a canopy of trees at low level with the cross and Worship hall roof stretching out over the canopy at its apex. At human scale, pedestrians arrive under the planted canopy and perceive the Church through the tree trunks.

The landscaping of the entire development is conceived of holistically and contains a series of open and planted zones, social, passive and recreational spaces, a mix of soft and hard. The spaces immediately surrounding the church contain a plaza type space which provides an overflow area from the large meeting space. A covered arrival zone adjacent to the driveway and immediate parking, and a meandering entry path from Darcy Road that provides respite at a small contemplative space for use by both School and Church.

The proposed planting will be a mix of native species commensurate with Cumberland Plain Woodland and selected exotic feature species. The Church mission is to provide a welcoming presence to the area and as such the fencing strategy is to let the building project into the public space by recessing the fence line behind and within the buildings. This is a generous gesture to the public space along Darcy Road and promotes a similar idea for continuation as future development may occur in time.





# Sustainability

The proposed Church building will capture roof water for re-use, minimise its energy usage through sensible solar orientation, shading of glazing and maximising cross ventilation.

## Ambulant and non-ambulant ramped access from Darcy Rd

The Parish has a desire to be an open and welcoming venue for the Westmead community and as such the Church building is to offer an entry commensurate to that aspiration.

The site topography will be adjusted to present a more welcoming frontage at the entry to the site. Ramped access can be achieved from Darcy Road at 1:20 grade such that ambulant and non-ambulant access is possible. Likewise level access is provided from new parking adjacent to the Church and for ceremonial vehicles to the entry verandah. Fencing will be recessed behind the Church to allow ease of access from the street. The Parish has a pastoral connection with the Hospital and therefore the move to this site gives it a geographical proximity that better suits its mission to the health precinct and the community in care.

## Amenity

The Church has been designed such that parishioners feel connected to the outside landscape and to each other within the building. Full-height glazed openings puncture the solid contained elements around the building. Shaded translucent clerestorey glazing provides warm top-lighting to the worship space.

Operable louvres around the façade at low level allow cross-ventilation at person height and ventilation out at high level above the sanctuary allows natural exhausting of warmer air to create a fresh and temperate internal environment.

Internal materials will be a mix light colours and warm tones to provide a sense of comfort and airiness.

Toilet facilities, kitchen and small meeting spaces surround the Worship Hall for ease of movement between spaces and good connectivity between spaces. Generally connecting spaces have glazed partition walls to afford visual continuity, light transmission and a sense of security.





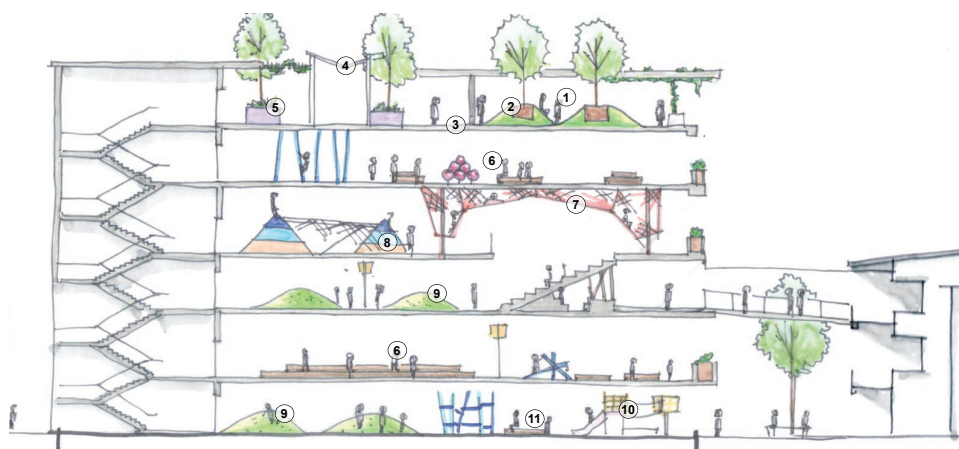
### 3.3 Design - Education



View from West



View from South



Concept - Cross-Section



Ground Floor Plan

### Summary

The proposed Pre-6 School building comprises:

- 200 student Catholic Early Learning Centre (CELC) to be located in the ground floor of the Catherine McAuley building (existing Mother Teresa Primary School).
- A new 6-level K-6 School building adjacent to the existing Mother Teresa Primary School.
- Centralised Administration facilities for the Pre-6 school to be located within the internally expanded and refurbished administrative facilities of the Mother Teresa Primary School.

The new K-6 School building is an innovative, contemporary school designed to facilitate the latest developments in Teaching and Learning for Primary Schools. It will be implemented in an architectural form that is evocative and suited to the needs of 1680 Primary-aged students, not reflective of conventional and institutional school design.

The new six level K-6 school building is characterised by integration of internal and external Teaching and Learning facilities and spaces in a building form where constructed open space almost equals enclosed space.

Distinct horizontal expression and provision of voids vertically through the three-dimensional form of the building, combined with landscaping within the voids, will provide a dramatic vision of gardens in the sky, softening the facade as well as providing shade at the upper levels.

The external fenestration of the K-6 school building takes its cue from the visual effects of the riparian corridor along the site's western edge with patterning on screening elements to be designed in conjunction with possible aboriginal interpretation of the local natural context.

The new K-6 building is further enhanced by subtle use of a gradient colour pattern in perforated sunshading screens, which directly address the natural landscape adjacent to the new building.

The development of the design, as reported on the following pages, is a response to the CEDP Brief and other influencing factors, both site and environmental.

The design of the new K-6 school building will be reported separately to that of the CELC and school Administration.