

Check all dimensions and site conditions prior to commencement of any work, the purchase or ordering of any materials, fittings, plant, services or equipment and the preparation of shop drawings and or the fabrication of any components.

Do not scale drawings - refer to figured dimensions only. Any discrepancies shall immediately be referred to the architect for clarification.

All drawings may not be reproduced or distributed without prior permission from the architect.

Tender

Legend - General Arrangement Plans

- XX-XX Refer to A40.111 for Master Schedule code references
- 0XX Door Code #
- W
XX Window Code #
- Property Boundary
- Concrete Wall / Column
- Timber Wall / Column
- Timber Slab
- Planter, Refer Landscape Architects Documentation
- Refer Landscape Architect and Civil Engineers Documentation
- Penetration Void/Zone
- FFL XX.XX Finished Floor Level
- SSL XX.XX Structural Slab Level
- AFFL XX.XX Above Finished Floor Level
- REVERSE CLOUD ELEMENTS TO BE CONFIRMED

5	18.09.20	DA Submission	DE	AG
4	29.05.20	50% Tender issue	TM	DE
3	15.05.20	Issued for information	DE	DE
2	24.04.20	30% Tender issue	TM	DE
1	30.03.20	Issued For Information	AL	DE
Revision	Date	Description	Initial	Checked

42 Honeysuckle Drive
Newcastle, NSW

General Arrangement Plan
9th Floor - Hotel Roof/ Plant



Status	Tender 50%		
Scale	1 : 100	@ B1	
Drawn	Author	Checked	Checker
Project No.	s12109.B		
Plot Date	13/10/2020 8:41:39 AM		
Plot File			

Drawing no. Revision
A.03.1090 5

Melbourne 1 Nicholson Street
Melbourne VIC 3000 Australia
T 03 8664 6200 F 03 8664 6300
email mel@batesmart.com.au
http://www.batesmart.com.au

Sydney 43 Brisbane Street
Sunny Hills NSW 2010 Australia
T 02 8354 5100 F 02 8354 5159
email syd@batesmart.com.au
http://www.batesmart.com.au

Bates Smart Pty Ltd ABN 70 004 999 400

BATESSMART

C:\temp\BDS_BSR_COMM_HOTEL_ARCH_DRAWING\delivered_GRC.rvt

Check all dimensions and site conditions prior to commencement of any work, the purchase or ordering of any materials, fittings, plant, services or equipment and the preparation of shop drawings and or the fabrication of any components.

Do not scale drawings - refer to figured dimensions only. Any discrepancies shall immediately be referred to the architect for clarification.

All drawings may not be reproduced or distributed without prior permission from the architect.

Tender

Legend - General Arrangement Plans

- XX-XX Refer to A40.*** for Master Schedule code references
- DOX Door Code #
- WXX Window Code #
- Property Boundary
- Concrete Wall / Column
- Timber Wall / Column
- Timber Slab
- Planter. Refer Landscape Architects Documentation
- Refer Landscape Architect and Civil Engineers Documentation
- Penetration Void/Zone
- FFL. XX.XX Finished Floor Level
- SSL. XX.XX Structural Slab Level
- AFFL. XX.XX Above Finished Floor Level
- REVERSE CLOUD ELEMENTS TO BE CONFIRMED

Overall Parking Schedule	
Description	Count
Disabled Parking	14
Standard Parking	163
Total Amount:	177

Overall Motorbike Parking Schedule	
Description	Count
Motorbike	7
Total Amount:	7

Ground Floor - Carspaces	
Carspaces	30

Ground Floor - Motorbikes	
Motorbikes	0

Ground Floor - Bicycles	
Bicycle Racks	35

5	18.09.20	DA Submission	DE	AG
4	29.05.20	50% Tender issue	TM	DE
3	15.05.20	Issued for information	DE	DE
2	24.04.20	30% Tender issue	TM	DE
1	30.03.20	Issued For Information	AL	DE
Revision	Date	Description	Initial	Checked

42 Honeysuckle Drive
Newcastle, NSW

General Arrangement Plan
Ground - Cafe / Gym

Status	Tender 50%		
Scale	1 : 100	@ B1	
Drawn	Author	Checked	Checker
Project No.	s12109.B		
Plot Date	13/10/2020 8:42:05 AM		
Plot File			

Drawing no. A.03.1000
Revision 5

Melbourne 1 Nicholson Street
Melbourne VIC 3000 Australia
T 03 8664 6200 F 03 8664 6300
email mel@batesmart.com.au
http://www.batesmart.com.au

Sydney 43 Brisbane Street
Sunny Hills NSW 2010 Australia
T 02 8354 5100 F 02 8354 5199
email syd@batesmart.com.au
http://www.batesmart.com.au

Bates Smart Pty Ltd ABN 70 004 999 400

BATESSMART



Tender

Legend - General Arrangement Plans

- XX-XX Refer to A40.*** for Master Schedule code references
- 0XX Door Code #
- W XX Window Code #
- Property Boundary
- Concrete Wall / Column
- Timber Wall / Column
- Timber Slab
- Planter. Refer Landscape Architects Documentation
- Refer Landscape Architect and Civil Engineers Documentation
- Penetration Void/Zone
- FFL XX.XX Finished Floor Level
- SSL XX.XX Structural Slab Level
- AFFL XX.XX Above Finished Floor Level
- REVERSE CLOUD ELEMENTS TO BE CONFIRMED

2nd Floor - Carspaces	
Description	Count
Disabled Parking	5
Standard Parking	82
Total Amount: 87	

5	18.09.20	DA Submission	DE	AG
4	29.05.20	50% Tender issue	TM	DE
3	15.05.20	Issued for information	DE	DE
2	24.04.20	30% Tender issue	TM	DE
1	30.03.20	Issued For Information	AL	DE
Revision	Date	Description	Initial	Checked

42 Honeysuckle Drive
Newcastle, NSW

General Arrangement Plan
2nd Floor - Hotel / Office Podium

Status Tender 50%

Scale 1 : 100 @ B1

Drawn Author Checked Checker

Project No. s12109.B

Plot Date 13/10/2020 8:38:41 AM

Plot File

Drawing no.

A.03.1020

Revision

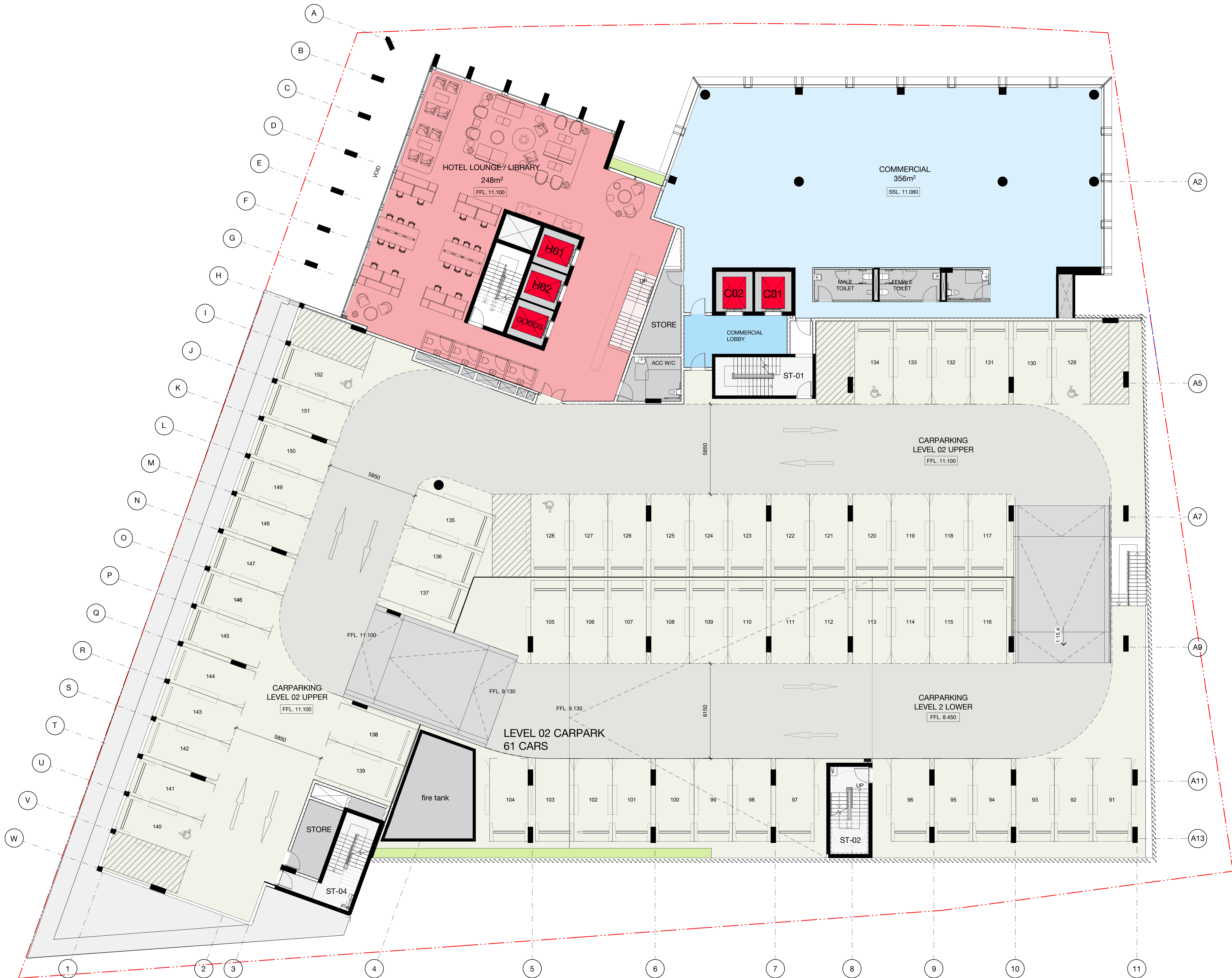
5

Melbourne 1 Nicholson Street
Melbourne VIC 3000 Australia
T 03 8664 6200 F 03 8664 6300
email mel@batesmart.com.au
http://www.batesmart.com.au

Sydney 43 Brisbane Street
Sunny Hills NSW 2010 Australia
T 02 8354 5100 F 02 8354 5199
email syd@batesmart.com.au
http://www.batesmart.com.au

Bates Smart Pty Ltd ABN 70 004 999 400

BATESSMART



Check all dimensions and site conditions prior to commencement of any work, the purchase or ordering of any materials, fittings, plant, services or equipment and the preparation of shop drawings and or the fabrication of any components.

Do not scale drawings - refer to figured dimensions only. Any discrepancies shall immediately be referred to the architect for clarification.

All drawings may not be reproduced or distributed without prior permission from the architect.

Tender

Legend - General Arrangement Plans

XX-XX

Refer to A40.*** for Master Schedule code references

0XX

Door Code #

W
XX

Window Code #

Property Boundary

Concrete Wall / Column

Timber Wall / Column

Timber Slab

Planter. Refer Landscape Architects Documentation

Refer Landscape Architect and Civil Engineers Documentation

Penetration Void/Zone

FFL. XXXX

Finished Floor Level

SSL. XXXX

Structural Slab Level

APFL. XXXX

Above Finished Floor Level

REVERSE CLOUD
ELEMENTS TO BE CONFIRMED

3rd Floor - Carspaces	
Description	Count
Standard Parking	13
Total Amount: 13	

3rd Floor - Motorbikes	
Description	Count
Motorbike	1
Total Amount: 1	

5	18.09.20	DA Submission	DE	AG
4	29.05.20	50% Tender issue	TM	DE
3	15.05.20	Issued for information	DE	DE
2	24.04.20	30% Tender issue	TM	DE
1	30.03.20	Issued For Information	AL	DE
Revision	Date	Description	Initial	Checked

42 Honeysuckle Drive
Newcastle, NSW

General Arrangement Plan
3rd Floor - Parking

Status	Tender 50%		
Scale	1 : 100	@ B1	
Drawn	Author	Checked	Checker
Project No.	s12109.B		
Plot Date	13/10/2020 8:38:23 AM		
Plot File			

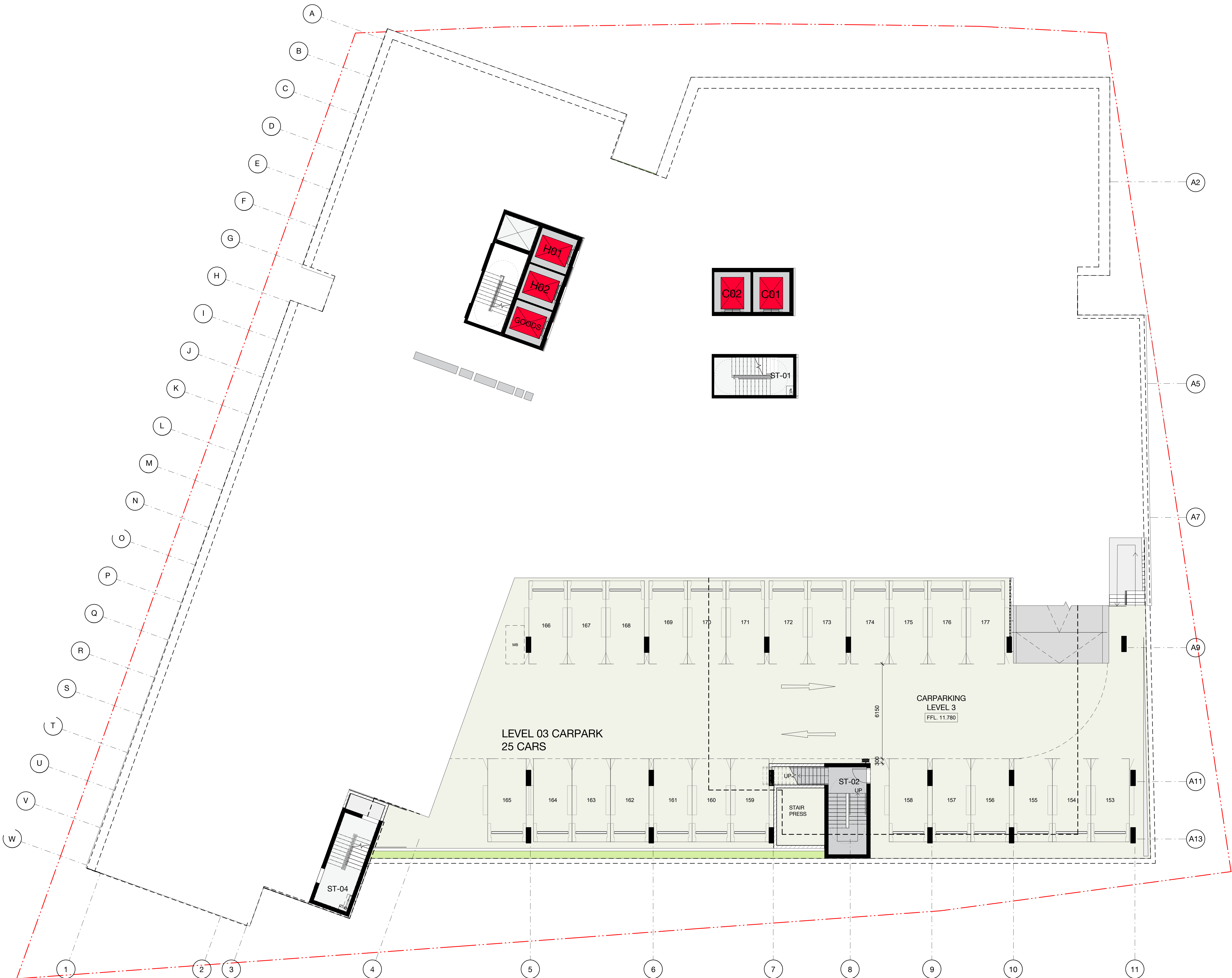
Drawing no. Revision
A.03.1030 5

Melbourne 1 Nicholson Street
Melbourne VIC 3000 Australia
T 03 8664 6200 F 03 8664 6300
email mel@batesmart.com.au
http://www.batesmart.com.au

Sydney 43 Brisbane Street
Sunny Hills NSW 2010 Australia
T 02 8354 5100 F 02 8354 5199
email syd@batesmart.com.au
http://www.batesmart.com.au

Bates Smart Pty Ltd ABN 70 004 999 400

BATESSMART



All drawings may not be reproduced or distributed without prior permission from the architect.

Legend - General Arrangement Plans

W	Window Code #
W	

Concrete Wall / Column

Timber Wall / Column

Timber Slab

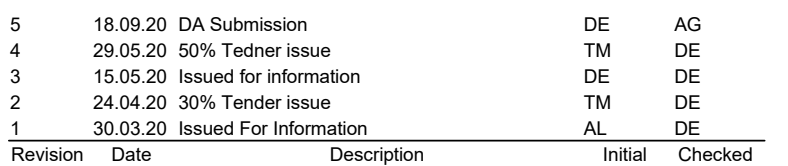
Planter. Refer Landscape Architects Documentation

 Refer Landscape Architect and Civil Engineers Documentation

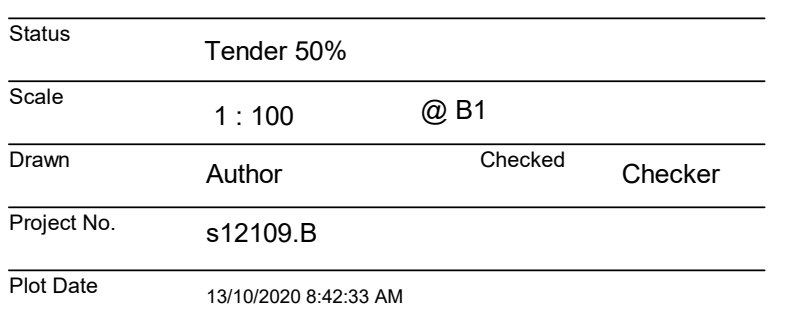
Penetration Void/Zone

FL. XX.XX Finished Floor Level
SL. XX.XX Structural Slab Level
FFL. XX.XX Above Finished Floor Level

 REVERSE CLOUD
ELEMENTS TO BE CONFIRMED



General Arrangement Plan
3rd Floor - Hotel / Office



Drawing no.	Revision
A.03.1040	5

Melbourne 1 Nicholson Street
Melbourne VIC 3000 Australia
T 03 8664 6200 F 03 8664 6300
Email mel@batessmart.com.au
<http://www.batessmart.com.au>

Sydney 43 Brisbane Street
Surry Hills NSW 2010 Australia
T 02 8354 5100 F 02 8354 5199
Email syd@batessmart.com.au
<http://www.batessmart.com.au>

Bates Smart Pty Ltd ABN 70 004 999 400

BATESSMART™

Tender

Legend - General Arrangement Plans

- XX-XX Refer to A40.*** for Master Schedule code references
- DOX Door Code #
- W XX Window Code #
- Property Boundary
- Concrete Wall / Column
- Timber Wall / Column
- Timber Slab
- Planter. Refer Landscape Architects Documentation
- Refer Landscape Architect and Civil Engineers Documentation
- Penetration Void/Zone
- FFL: XXXX Finished Floor Level
- SSL: XXXX Structural Slab Level
- AFFL: XXXX Above Finished Floor Level
- REVERSE CLOUD ELEMENTS TO BE CONFIRMED

5	18.09.20	DA Submission	DE	AG
4	29.05.20	50% Tender issue	TM	DE
3	15.05.20	Issued for information	DE	DE
2	24.04.20	30% Tender issue	TM	DE
1	30.03.20	Issued for information	AL	DE

42 Honeysuckle Drive
Newcastle, NSW

General Arrangement Plan
4th Floor - Hotel / Office Tower

Status	Tender 50%		
Scale	1 : 100	@ B1	
Drawn	Author	Checked	Checker
Project No.	s12109.B		
Plot Date	13/10/2020 8:39:31 AM		
Plot File			

Drawing no. Revision
A.03.1041 5

Melbourne 1 Nicholson Street
Melbourne VIC 3000 Australia
T 03 8664 6200 F 03 8664 6300
email mel@batesmart.com.au
http://www.batesmart.com.au

Sydney 43 Brisbane Street
Sunny Hills NSW 2010 Australia
T 02 8354 5100 F 02 8354 5159
email syd@batesmart.com.au
http://www.batesmart.com.au

Bates Smart Pty Ltd ABN 70 004 999 400

BATESSMART

Check all dimensions and site conditions prior to commencement of any work, the purchase or ordering of any materials, fittings, plant, services or equipment and the preparation of shop drawings and or the fabrication of any components.

Do not scale drawings - refer to figured dimensions only. Any discrepancies shall immediately be referred to the architect for clarification.

All drawings may not be reproduced or distributed without prior permission from the architect.

Tender

Legend - General Arrangement Plans

- XX-XX Refer to A40.111 for Master Schedule code references
DXX Door Code #
W XX Window Code #
Property Boundary
Concrete Wall / Column
Timber Wall / Column
Timber Slab
Planter, Refer Landscape Architects Documentation
Refer Landscape Architect and Civil Engineers Documentation
Penetration Void/Zone
FFL XX.XX Finished Floor Level
SSL XX.XX Structural Slab Level
AFFL XX.XX Above Finished Floor Level
REVERSE CLOUD ELEMENTS TO BE CONFIRMED

5	18.09.20	DA Submission	DE	AG
4	29.05.20	50% Tender issue	TM	DE
3	15.05.20	Issued for information	DE	DE
2	24.04.20	30% Tender issue	TM	DE
1	30.03.20	Issued For Information	AL	DE
Revision	Date	Description	Initial	Checked

42 Honeysuckle Drive
Newcastle, NSW

General Arrangement Plan
5th Floor - Hotel / Office Tower

Status Tender 50%

Scale 1 : 100 @ B1

Drawn Author Checked Checker

Project No. s12109.B

Plot Date 13/10/2020 8:40:00 AM

Plot File

Drawing no.

A.03.1050

Revision

5

Melbourne 1 Nicholson Street
Melbourne VIC 3000 Australia
T 03 8664 6200 F 03 8664 6300
email mel@batesmart.com.au
http://www.batesmart.com.au

Sydney 43 Brisbane Street
Sunny Hills NSW 2010 Australia
T 02 8354 5100 F 02 8354 5159
email syd@batesmart.com.au
http://www.batesmart.com.au

Bates Smart Pty Ltd ABN 70 004 999 400

BATESSMART

C:\temp\0105_BSR_COMM_HOTEL_ARCH\2020\5_detailed_GRC.rvt

Check all dimensions and site conditions prior to commencement of any work, the purchase or ordering of any materials, fittings, plant, services or equipment and the preparation of shop drawings and or the fabrication of any components.

Do not scale drawings - refer to figured dimensions only. Any discrepancies shall immediately be referred to the architect for clarification.

All drawings may not be reproduced or distributed without prior permission from the architect.

Tender

Legend - General Arrangement Plans

- XX-XX Refer to A40.111 for Master Schedule code references
- 0XX Door Code #
- W XX Window Code #
- Property Boundary
- Concrete Wall / Column
- Timber Wall / Column
- Timber Slab
- Planter, Refer Landscape Architects Documentation
- Refer Landscape Architect and Civil Engineers Documentation
- Penetration Void/Zone
- FFL XX.XX Finished Floor Level
SSL XX.XX Structural Slab Level
AFL XX.XX Above Finished Floor Level
- REVERSE CLOUD
ELEMENTS TO BE CONFIRMED

5	18.09.20	DA Submission	DE	AG
4	29.05.20	50% Tender issue	TM	DE
3	15.05.20	Issued for information	DE	DE
2	24.04.20	30% Tender issue	TM	DE
1	30.03.20	Issued For Information	AL	DE
Revision	Date	Description	Initial	Checked

42 Honeysuckle Drive
Newcastle, NSW

General Arrangement Plan
6th Floor - Hotel / Office Tower

Status	Tender 50%		
Scale	1 : 100	@ B1	
Drawn	Author	Checked	Checker
Project No.	s12109.B		
Plot Date	13/10/2020 8:40:31 AM		
Plot File			

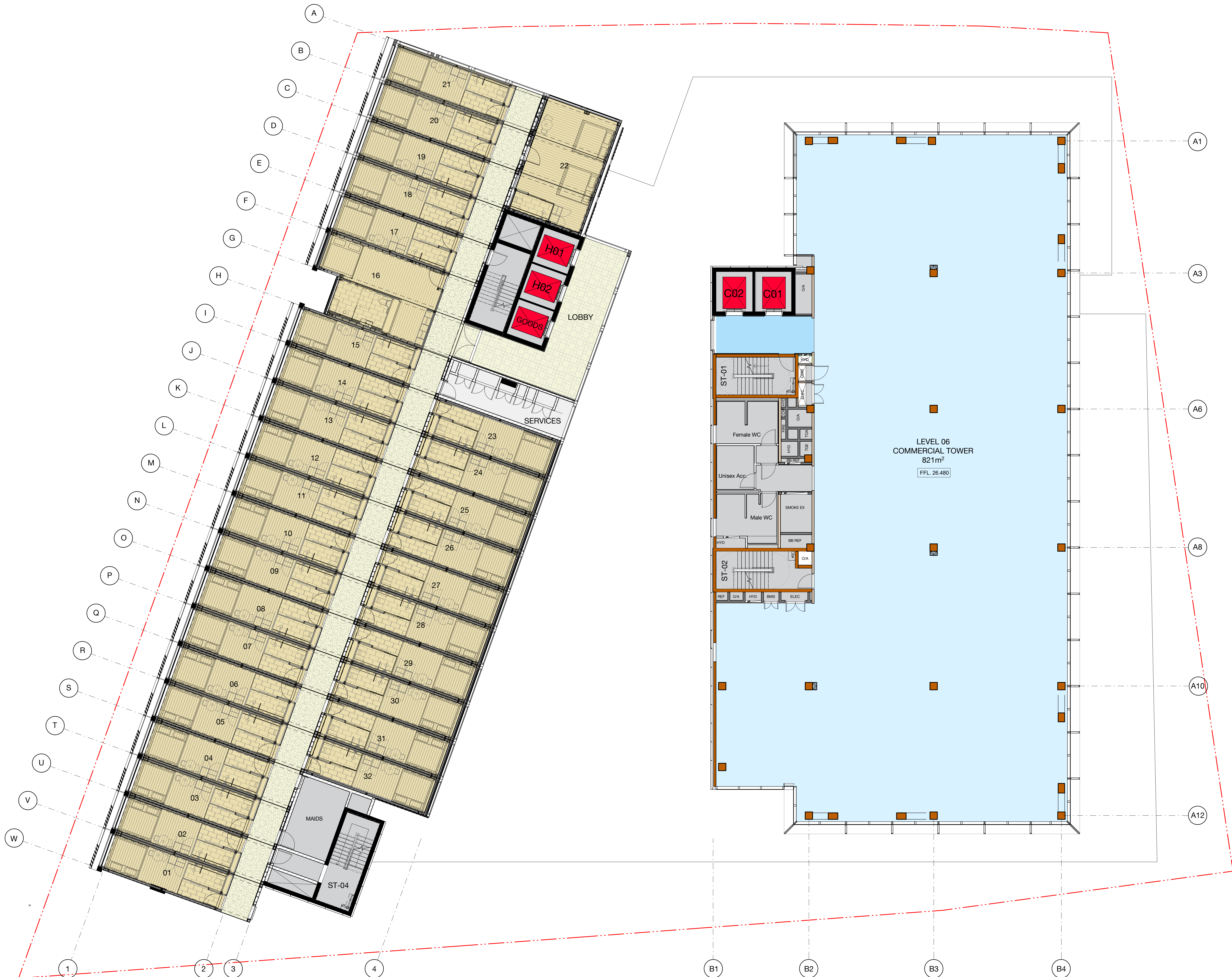
Drawing no. Revision
A.03.1060 5

Melbourne 1 Nicholson Street
Melbourne VIC 3000 Australia
T 03 8664 6200 F 03 8664 6300
email mel@batesmart.com.au
http://www.batesmart.com.au

Sydney 43 Brisbane Street
Sunny Hills NSW 2010 Australia
T 02 8354 5100 F 02 8354 5159
email syd@batesmart.com.au
http://www.batesmart.com.au

Bates Smart Pty Ltd ABN 70 004 999 400

BATESSMART



Check all dimensions and site conditions prior to commencement of any work, the purchase or ordering of any materials, fittings, plant, services or equipment and the preparation of shop drawings and or the fabrication of any components.

Do not scale drawings - refer to figured dimensions only. Any discrepancies shall immediately be referred to the architect for clarification.

All drawings may not be reproduced or distributed without prior permission from the architect.

Tender

Legend - General Arrangement Plans

- XX-XX Refer to A40.111 for Master Schedule code references
- 0XX Door Code #
- W
XX Window Code #
- Property Boundary
- Concrete Wall / Column
- Timber Wall / Column
- Timber Slab
- Planter, Refer Landscape Architects Documentation
- Refer Landscape Architect and Civil Engineers Documentation
- Penetration Void/Zone
- FFL XX.XX Finished Floor Level
SSL XX.XX Structural Slab Level
AFFL XX.XX Above Finished Floor Level
- REVERSE CLOUD
ELEMENTS TO BE CONFIRMED

5	18.09.20	DA Submission	DE	AG
4	29.05.20	50% Tender issue	TM	DE
3	15.05.20	Issued for information	DE	DE
2	24.04.20	30% Tender issue	TM	DE
1	30.03.20	Issued For Information	AL	DE

42 Honeysuckle Drive
Newcastle, NSW

General Arrangement Plan
7th Floor - Hotel / Office Tower

Status	Tender 50%		
Scale	1 : 100	@ B1	
Drawn	Author	Checked	Checker
Project No.	s12109.B		
Plot Date	13/10/2020 8:41:00 AM		
Plot File			

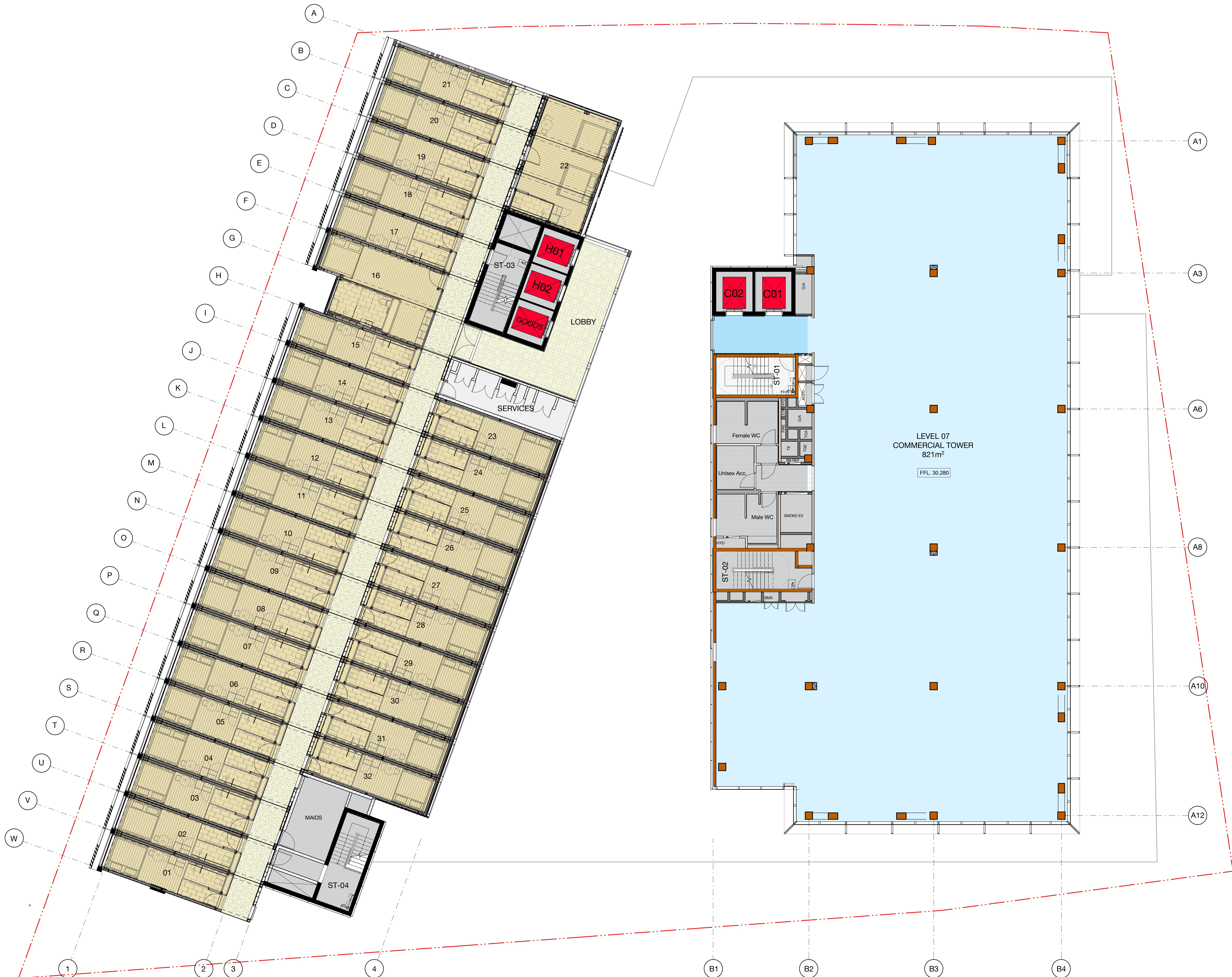
Drawing no. A.03.1070
Revision 5

Melbourne 1 Nicholson Street
Melbourne VIC 3000 Australia
T 03 8664 6200 F 03 8664 6300
email mel@batesmart.com.au
http://www.batesmart.com.au

Sydney 43 Brisbane Street
Sunny Hills NSW 2010 Australia
T 02 8354 5100 F 02 8354 5159
email syd@batesmart.com.au
http://www.batesmart.com.au

Bates Smart Pty Ltd ABN 70 004 999 400

BATESSMART



Check all dimensions and site conditions prior to commencement of any work, the purchase or ordering of any materials, fittings, plant, services or equipment and the preparation of shop drawings and or the fabrication of any components.

Do not scale drawings - refer to figured dimensions only. Any discrepancies shall immediately be referred to the architect for clarification.

All drawings may not be reproduced or distributed without prior permission from the architect.

Tender

Legend - General Arrangement Plans

XX-XX	Refer to A40.111 for Master Schedule code references
0XX	Door Code #
W XX	Window Code #
---	Property Boundary
---	Concrete Wall / Column
---	Timber Wall / Column
---	Timber Slab
---	Planter, Refer Landscape Architects Documentation
---	Refer Landscape Architect and Civil Engineers Documentation
---	Penetration Void/Zone
FFL XX.XX	Finished Floor Level
SSL XX.XX	Structural Slab Level
AFFL XX.XX	Above Finished Floor Level
REVERSE CLOUD	ELEMENTS TO BE CONFIRMED

5	18.09.20	DA Submission	DE	AG
4	29.05.20	50% Tender issue	TM	DE
3	15.05.20	Issued for information	DE	DE
2	24.04.20	30% Tender issue	TM	DE
1	30.03.20	Issued For Information	AL	DE
Revision	Date	Description	Initial	Checked

42 Honeysuckle Drive
Newcastle, NSW

General Arrangement Plan
8th Floor - Hotel/ Office Tower

Status	Tender 50%		
Scale	1 : 100	@ B1	
Drawn	Author	Checked	Checker
Project No.	s12109.B		
Plot Date	13/10/2020 8:41:28 AM		
Plot File			

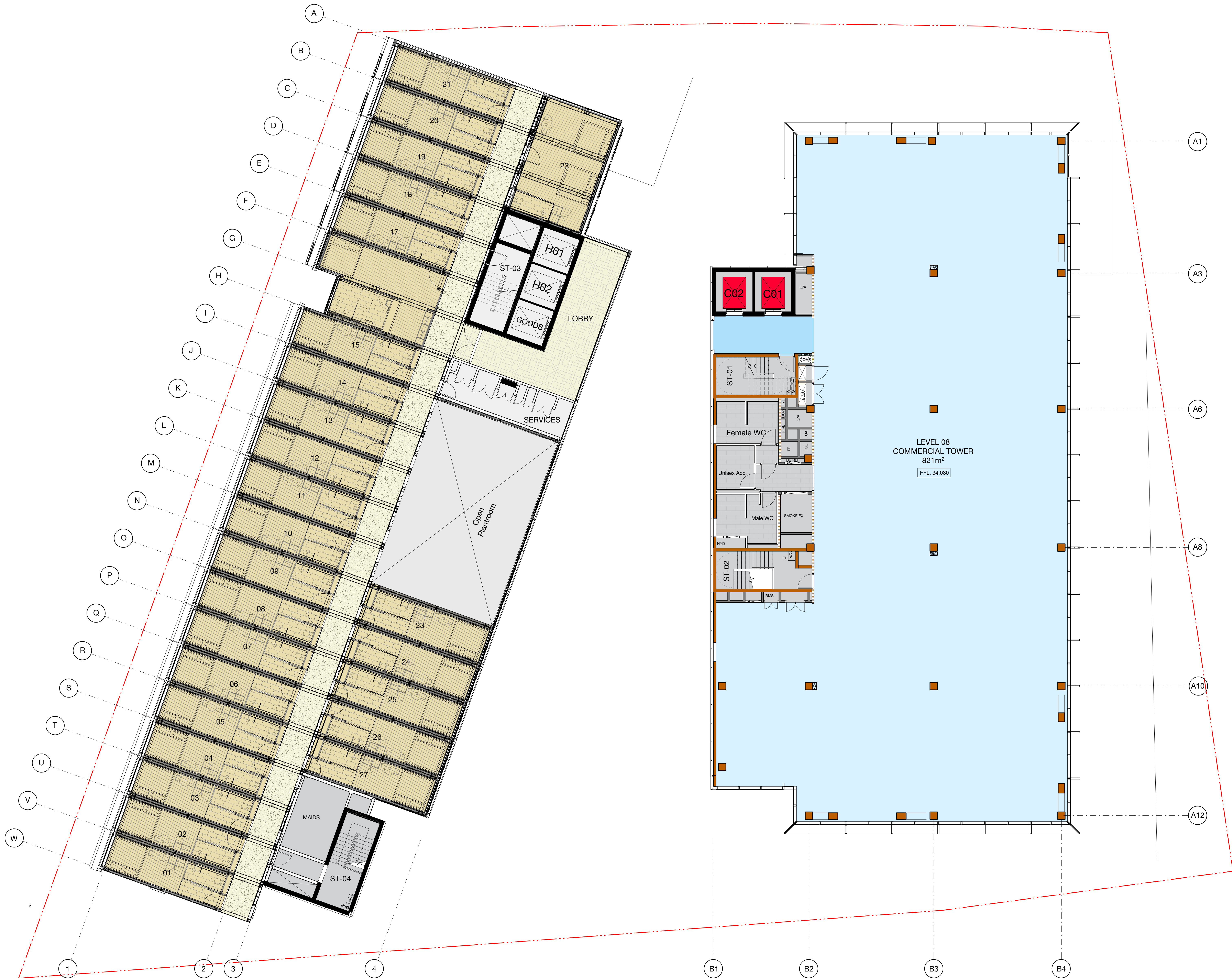
Drawing no.	Revision
A.03.1080	5

Melbourne 1 Nicholson Street
Melbourne VIC 3000 Australia
T 03 8664 6200 F 03 8664 6300
email mel@batesmart.com.au
http://www.batesmart.com.au

Sydney 43 Brisbane Street
Sunny Hills NSW 2010 Australia
T 02 8354 5100 F 02 8354 5159
email syd@batesmart.com.au
http://www.batesmart.com.au

Bates Smart Pty Ltd ABN 70 004 999 400

BATESSMART



Check all dimensions and site conditions prior to commencement of any work, the purchase or ordering of any materials, fittings, plant, services or equipment and the preparation of shop drawings and/or the fabrication of any components.

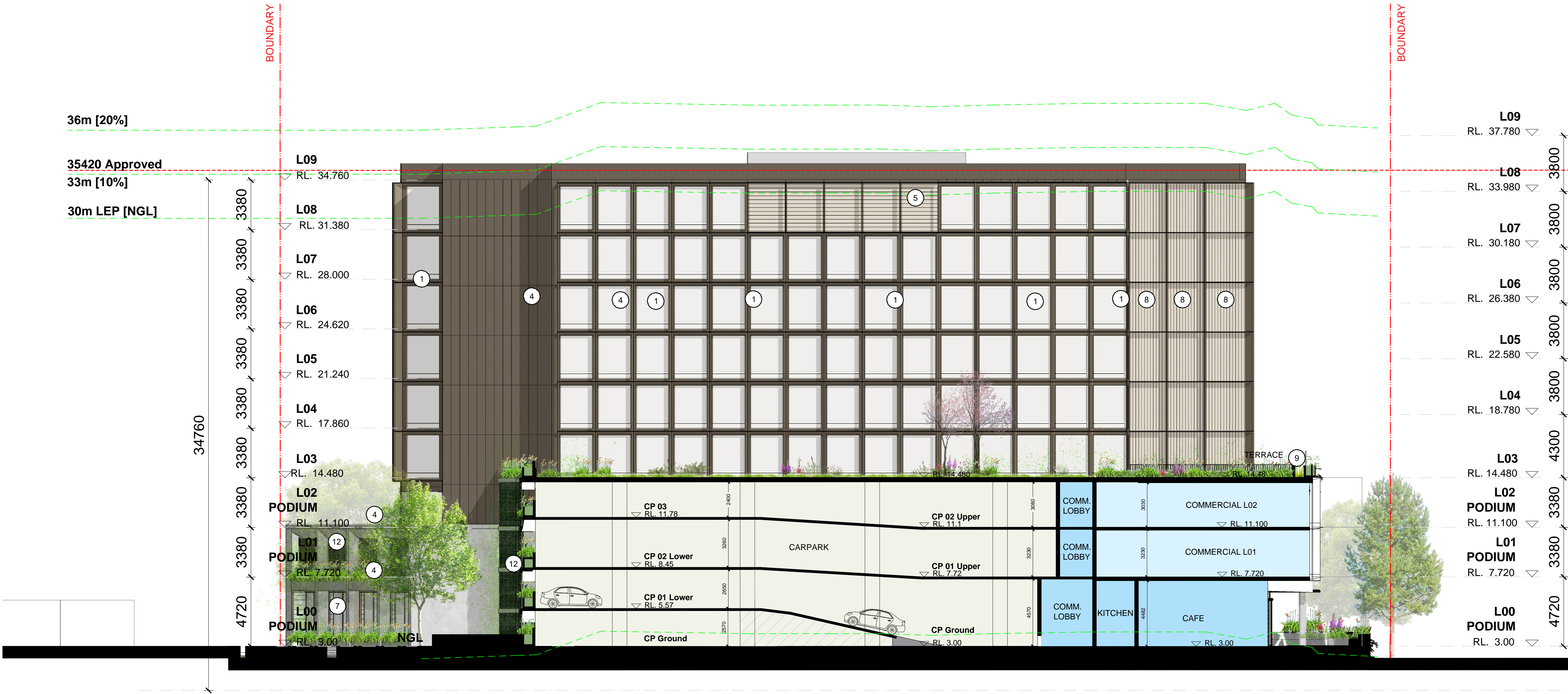
All drawings to be read in conjunction with all architectural documents and all other consultants documents.

Do not scale drawings - refer to figured dimensions only. Any discrepancies shall immediately be referred to the architect for clarification.

All drawings may not be reproduced or distributed without prior permission from the architect.

MATERIALS

1. Powdercoated: Dark Bronze Frames
2. Powdercoated:Light Bronze Fins
3. Spandrel
4. Concrete/ Barestone
5. Charcoal Louvres
6. Powdercoated: Charcoal Pearl Matt Fins
7. Glass Louvres (Operable)
8. Aluminium Cladding
9. Metal Balustrade
10. "Z" Purlins - Charcoal
11. Glass recessed
12. Tensile Steel Mesh for Climbing Plants



SECTION BB

3	18.09.20	DA Submission	TF	DE
2	18.02.20	DA Submission	TF	DE
1	07.02.20	DA Submission	TF	DE
Revision Date	Description	Initial	Checked	

S12109_Doma
Honeysuckle Drive, Newcastle

East Hotel Elevation

Scale	1:150@A1 1:300 @ A3
Drawn	Checked
Project No.	S12109
Status	FOR INFORMATION
Plot Date	25/9/2020 5:42 PM
Plot File	S:\12100-12199\S12109_Doma_HoneysuckleDr\50_Documents\... Images\200915_DA Amendments Report\Amended Sections\...
Drawing No.	[Revision]

A07.006 [3]

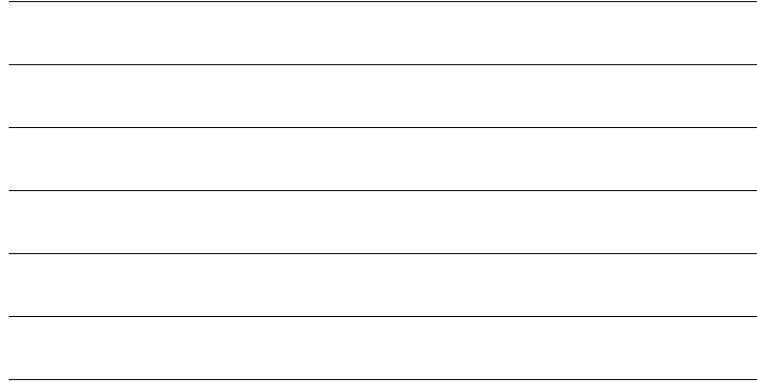
Melbourne 1 Nicholson Street
Melbourne VIC 3000 Australia
T 03 8664 6200 F 03 8664 6300
email melb@batesmart.com.au
http://www.batesmart.com.au

Sydney 43 Brisbane Street
Surry Hills NSW 2010 Australia
T 02 8354 5100 F 02 8354 5199
email syd@batesmart.com.au
http://www.batesmart.com.au

Bates Smart Architects Pty Ltd ABN 68 094 740 986

Do not scale drawings - refer to figured dimensions only. Any discrepancies shall immediately be referred to the architect for clarification.

1. Powdercoated: Dark Bronze Frames
2. Powdercoated:Light Bronze Fins
3. Spandrel
4. Concrete/ Barestone
5. Charcoal Louvres
6. Powdercoated: Charcoal Pearl Matt Fins
7. Glass Louvres (Operable)
8. Aluminium Cladding
9. Metal Balustrade
10. "Z" Purlins - Charcoal
11. Glass recessed
12. Tensile Steel Mesh for Climbing Plants



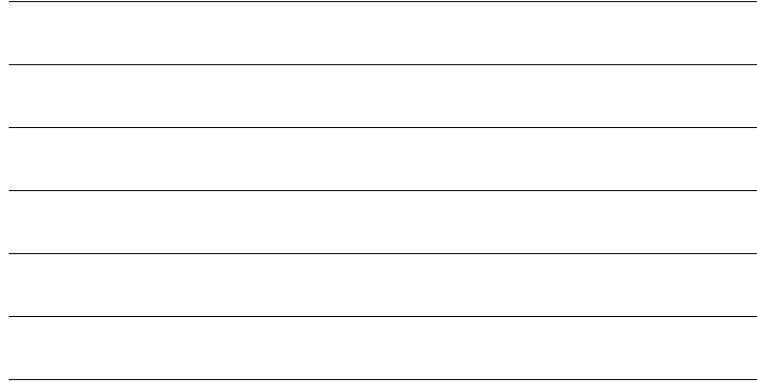
S12109_Doma
Honeysuckle Drive, Newcastle

A07.001[4]

Bates Smart Architects Pty Ltd ABN 68 094 740 986

All drawings may not be reproduced or distributed without prior permission from the architect.

1. Powdercoated: Dark Bronze Frames
2. Powdercoated:Light Bronze Fins
3. Spandrel
4. Concrete/ Barestone
5. Charcoal Louvres
6. Powdercoated: Charcoal Pearl Matt Fins
7. Glass Louvres (Operable)
8. Aluminium Cladding
9. Metal Balustrade
10. "Z" Purlins - Charcoal
11. Glass recessed
12. Tensile Steel Mesh for Climbing Plants



S12109_Doma
Honeysuckle Drive, Newcastle

A07.002[4]

Bates Smart Architects Pty Ltd ABN 68 094 740 986

Check all dimensions and site conditions prior to commencement of any work, the purchase or ordering of any materials, fittings, plant, services or equipment and the preparation of shop drawings and/or the fabrication of any components.

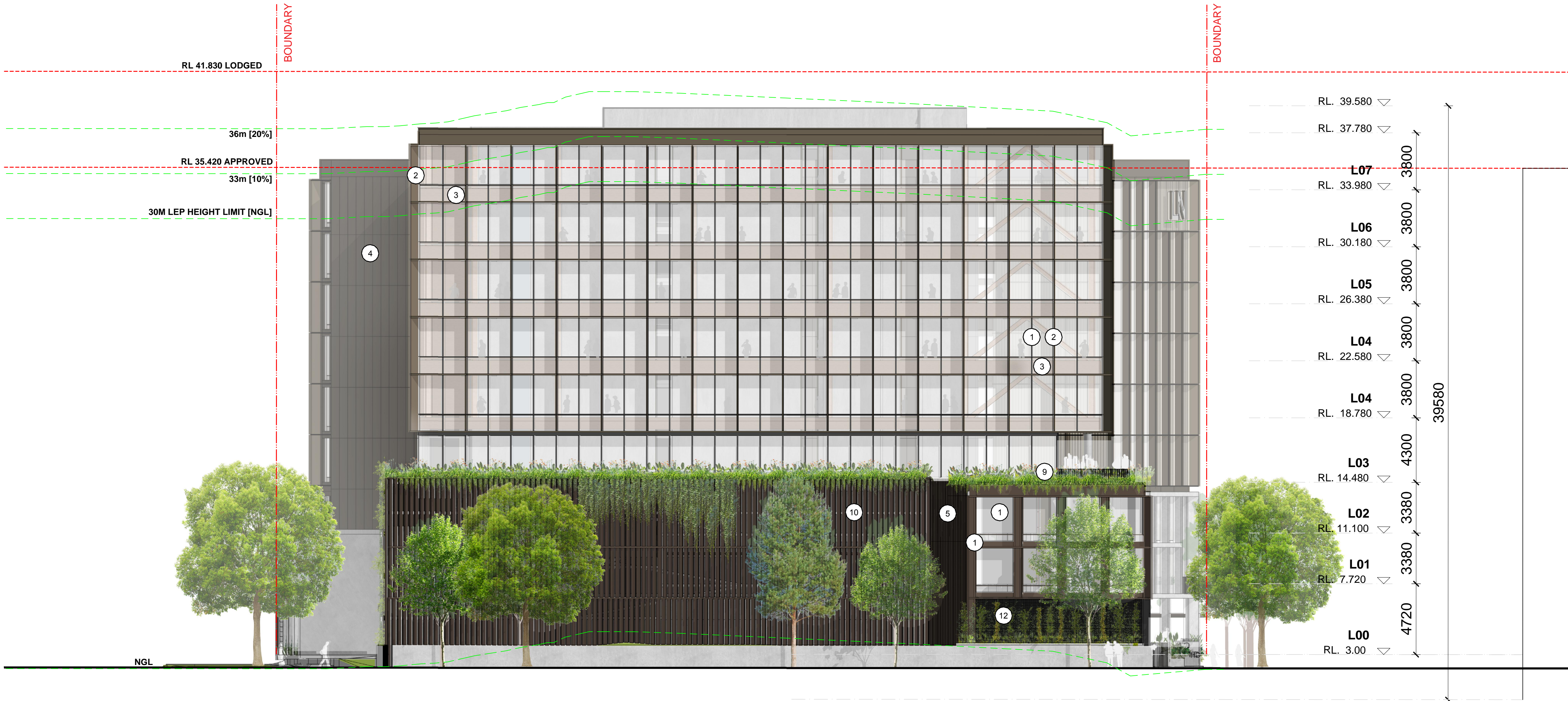
All drawings to be read in conjunction with all architectural documents and all other consultants documents.

Do not scale drawings - refer to figured dimensions only. Any discrepancies shall immediately be referred to the architect for clarification.

All drawings may not be reproduced or distributed without prior permission from the architect.

MATERIALS

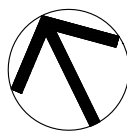
1. Powdercoated: Dark Bronze Frames
2. Powdercoated:Light Bronze Fins
3. Spandrel
4. Concrete/ Barestone
5. Charcoal Louvres
6. Powdercoated: Charcoal Pearl Matt Fins
7. Glass Louvres (Operable)
8. Aluminium Cladding
9. Metal Balustrade
10. "Z" Purlins - Charcoal
11. Glass recessed
12. Tensile Steel Mesh for Climbing Plants



4	18.09.20	DA Submission	SO	DE
3	14.02.20	DA Submission	SO	DE
2	18.02.20	DA Submission	TF	DE
1	07.02.20	DA Submission	TF	DE
Revision Date	Description	Initial	Checked	

S12109_Doma
Honeysuckle Drive, Newcastle

East Elevation



Scale	1:150 @A1 1:300 @ A3
Drawn	Checked
Project No.	S12109
Status	FOR INFORMATION
Plot Date	25/9/2020 4:25 PM
Plot File	S:\12100-12199\S12109_Doma_HoneysuckleDr\70_CAD\Plots\... \A\A07.003[2] - East Elevation.dwg
Drawing No.	[Revision]

A07.003[4]

Melbourne 1 Nicholson Street
Melbourne VIC 3000 Australia
T 03 8664 6200 F 03 8664 6300
email melb@batessmart.com.au
http://www.batessmart.com.au

Sydney 43 Brisbane Street
Surry Hills NSW 2010 Australia
T 02 8354 5100 F 02 8354 5199
email syd@batessmart.com.au
http://www.batessmart.com.au

Bates Smart Architects Pty Ltd ABN 68 094 740 986

BATESSMART™

Check all dimensions and site conditions prior to commencement of any work, the purchase or ordering of any materials, fittings, plant, services or equipment and the preparation of shop drawings and/or the fabrication of any components.

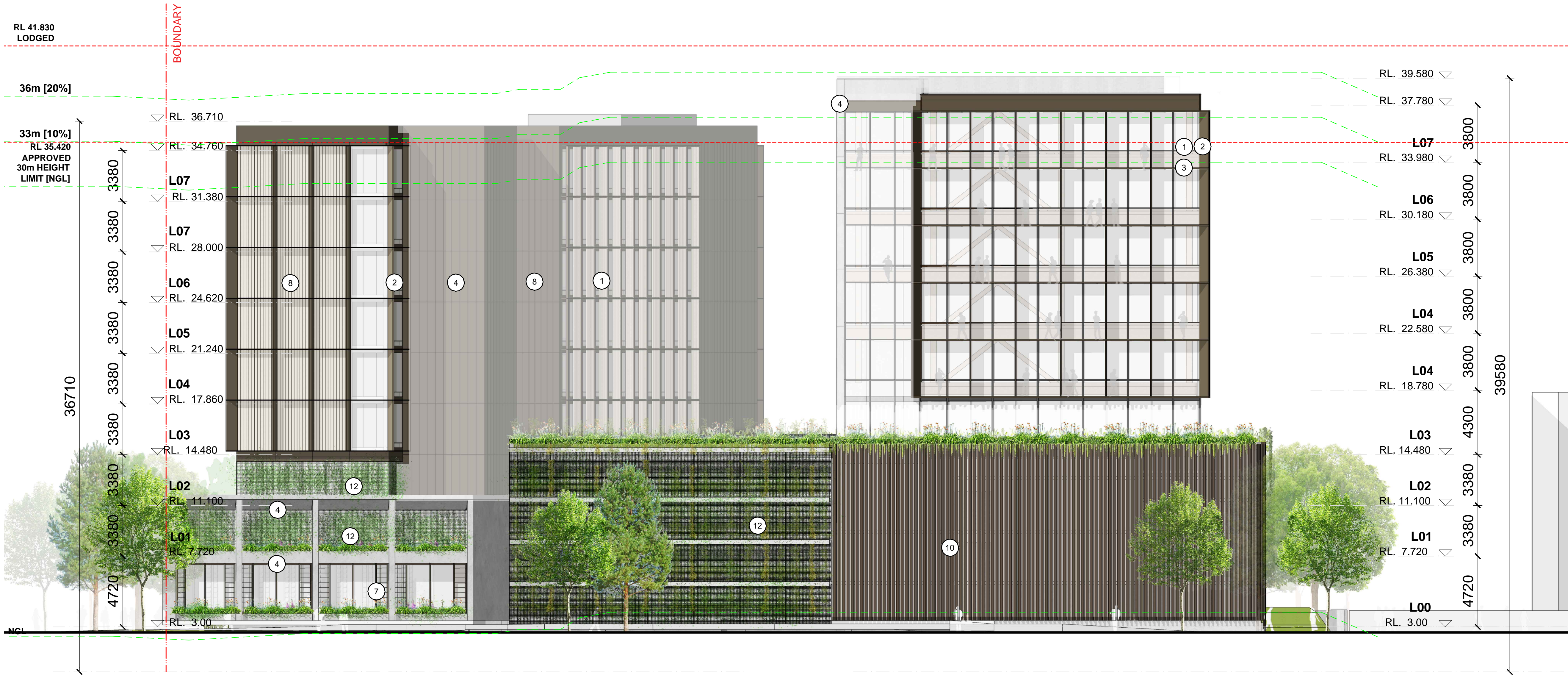
All drawings to be read in conjunction with all architectural documents and all other consultants documents.

Do not scale drawings - refer to figured dimensions only. Any discrepancies shall immediately be referred to the architect for clarification.

All drawings may not be reproduced or distributed without prior permission from the architect.

MATERIALS

1. Powdercoated: Dark Bronze Frames
2. Powdercoated:Light Bronze Fins
3. Spandrel
4. Concrete/ Barestone
5. Charcoal Louvres
6. Powdercoated: Charcoal Pearl Matt Fins
7. Glass Louvres (Operable)
8. Aluminium Cladding
9. Metal Balustrade
10. "Z" Purlins - Charcoal
11. Glass recessed
12. Tensile Steel Mesh for Climbing Plants



4	18.09.20	DA Submission	SO	DE
3	14.02.20	DA Submission	SO	DE
2	18.02.20	DA Submission	TF	DE
1	07.02.20	DA Submission	TF	DE
Revision Date	Description	Initial	Checked	

S12109_Doma Honeysuckle Drive, Newcastle

Southt Elevation

Scale	1:150@A1	1:300 @ A3
Drawn	Checked	
Project No.	S12109	
Status	FOR INFORMATION	
Plot Date	25/9/2020 4:26 PM	
Plot File	S:\12100-12199\S12109_Doma_HoneysuckleDr\70_CAD\Plots\... \A\A07.004[2] - South Elevation.dwg	
Drawing No.	[Revision]	

A07.004[4]

Melbourne 1 Nicholson Street
Melbourne VIC 3000 Australia
T 03 8664 6200 F 03 8664 6300
email melb@batessmart.com.au
http://www.batessmart.com.au

Sydney 43 Brisbane Street
Surry Hills NSW 2010 Australia
T 02 8354 5100 F 02 8354 5199
email syd@batessmart.com.au
http://www.batessmart.com.au

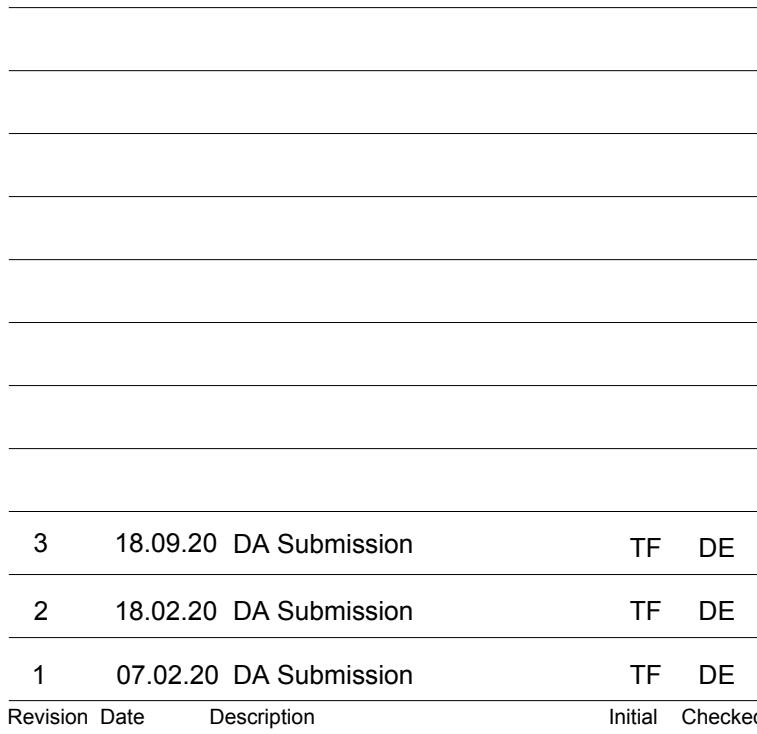
Bates Smart Architects Pty Ltd ABN 68 094 740 986

BATESSMART

Do not scale drawings - refer to figured dimensions only. Any discrepancies shall immediately be referred to the architect for clarification.

MATERIALS

1. Powdercoated: Dark Bronze Frames
2. Powdercoated:Light Bronze Fins
3. Spandrel
4. Concrete/ Barestone
5. Charcoal Louvers
6. Powdercoated: Charcoal Pearl Matt Fins
7. Glass Louvers (Operable)
8. Aluminium Cladding
9. Metal Balustrade
10. "Z" Purlins - Charcoal
11. Glass recessed
12. Tensile Steel Mesh for Climbing Plants



S12109_Doma
Honeysuckle Drive, Newcastle

West Commercial Elevation



Scale 1:150 @A1 1:300 @ A3

Drawn	Checked
-------	---------

Project No. S12109

Status	FOR INFORMATION
--------	-----------------

Plot Date 25/9/2020 5:27 PM

Plot File S:\12100-12199\12109_Doma_HoneysuckleDr150_Documents\ ... Images\200915_DA Amendments Report\Amended Sections\

Drawing No. [Revision]

A07.005[3]

Melbourne 1 Nicholson Street
Melbourne VIC 3000 Australia
T 03 8664 6200 F 03 8664 6300
email melb@batessmart.com.au
<http://www.batessmart.com.au>

Sydney 43 Brisbane Street
Surry Hills NSW 2010 Australia
T 02 8354 5100 F 02 8354 5199
email syd@batessmart.com.au
<http://www.batessmart.com.au>

Bates Smart Architects Pty Ltd ABN 68 094 740 986

BATESSMART™

Check all dimensions and site conditions prior to commencement of any work, the purchase or ordering of any materials, fittings, plant, services or equipment and the preparation of shop drawings and/or the fabrication of any components.

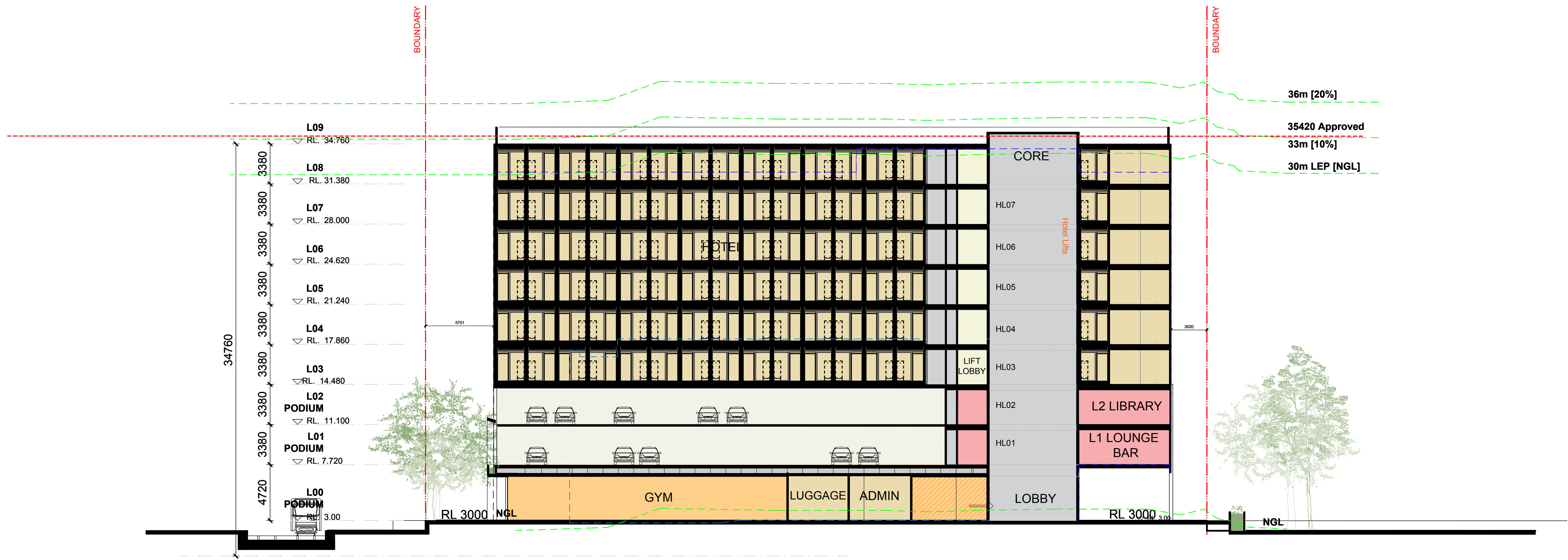
All drawings to be read in conjunction with all architectural documents and all other consultants documents.

Do not scale drawings - refer to figured dimensions only. Any discrepancies shall immediately be referred to the architect for clarification.

All drawings may not be reproduced or distributed without prior permission from the architect.

----- PROFILE OF APPROVED DA SCHEME

----- PROFILE OF LODGED DA SCHEME



SECTION DD

4	15.09.20	DA Submission	EN	DE
3	07.02.20	DA Submission	EN	DE
2	08.01.20	For Information	DE	DE
1	10.12.19	For Information	EN	DE
Revision Date	Description	Initial	Checked	

S12109_Doma
Honeysuckle Drive, Newcastle

Section DD

Scale	1:200 @A1	1:400 @ A3
Drawn		Checked
Project No.	S12109	
Status	FOR INFORMATION	
Plot Date	25/9/2020 5:34 PM	
Plot File	S:\12100-12199\S12109_Doma_HoneysuckleDr\50_Documents\... Images\200915_DA Amendments Report\Amended Sections\	
Drawing No.		[Revision]

A08.003[4]

Melbourne 1 Nicholson Street
Melbourne VIC 3000 Australia
T 03 8664 6200 F 03 8664 6300
email melb@batessmart.com.au
http://www.batessmart.com.au

Sydney 43 Brisbane Street
Surry Hills NSW 2010 Australia
T 02 8354 5100 F 02 8354 5199
email syd@batessmart.com.au
http://www.batessmart.com.au

Bates Smart Architects Pty Ltd ABN 68 094 740 986

BATESSMART

Check all dimensions and site conditions prior to commencement of any work, the purchase or ordering of any materials, fittings, plant, services or equipment and the preparation of shop drawings and/or the fabrication of any components.

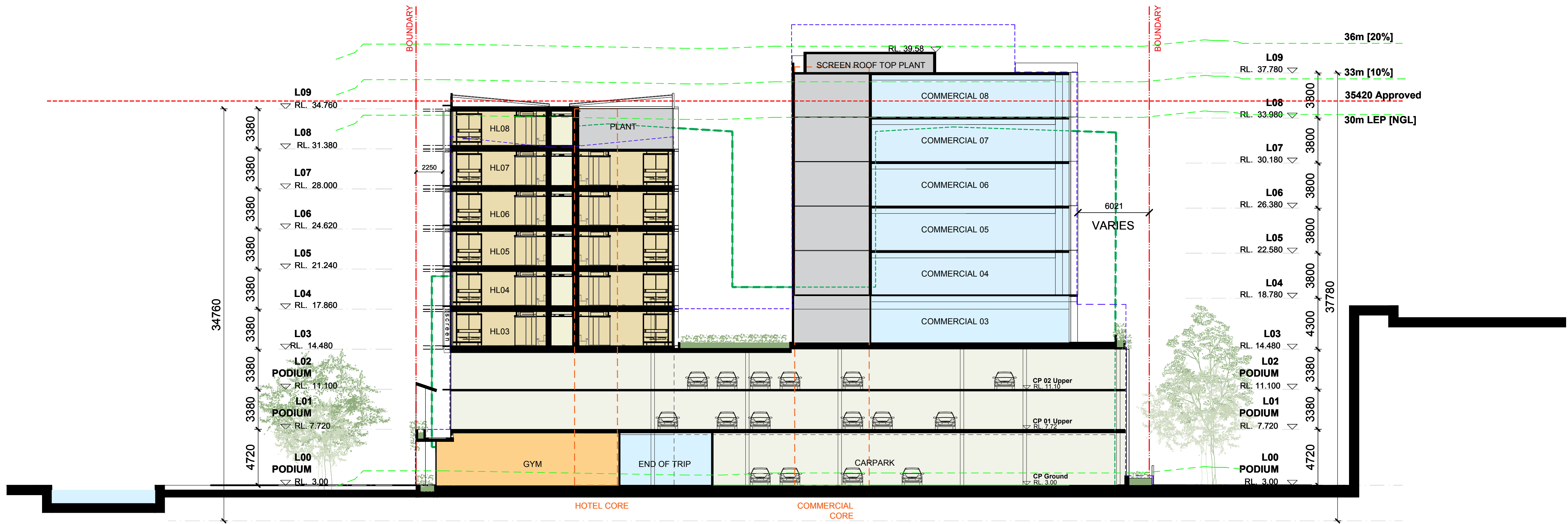
All drawings to be read in conjunction with all architectural documents and all other consultants documents.

Do not scale drawings - refer to figured dimensions only. Any discrepancies shall immediately be referred to the architect for clarification.

All drawings may not be reproduced or distributed without prior permission from the architect.

----- PROFILE OF APPROVED DA SCHEME

----- PROFILE OF LODGED DA SCHEME



SECTION AA

5	18.09.20	DA Submission	EN	DE
4	07.02.20	DA Submission	EN	DE
3	29.01.20	For Information	EOS	DE
2	08.01.20	For Information	DE	DE
1	10.12.19	For Information	EN	DE
Revision Date	Description	Initial	Checked	

S12109_Doma
Honeysuckle Drive, Newcastle

Section AA - BB

Scale	1:200 @A1 1:400 @ A3
Drawn	Checked
Project No.	S12109
Status	FOR INFORMATION
Plot Date	25/9/2020 5:26 PM
Plot File	S:\12100-12199\S12109_Doma_HoneysuckleDr\50_Documents\... Images\200915_DA Amendments Report\Amended Sections\...
Drawing No.	[Revision]

A08.001[5]

Melbourne 1 Nicholson Street
Melbourne VIC 3000 Australia
T 03 8664 6200 F 03 8664 6300
email melb@batessmart.com.au
http://www.batessmart.com.au

Sydney 43 Brisbane Street
Surry Hills NSW 2010 Australia
T 02 8354 5100 F 02 8354 5199
email syd@batessmart.com.au
http://www.batessmart.com.au

Bates Smart Architects Pty Ltd ABN 68 094 740 986

BATESSMART

All drawings may not be reproduced or distributed without prior permission from the architect.

----- PROFILE OF LODGED DA SCHEME



Bates Smart Architects Pty Ltd ABN 68 094 740 986