

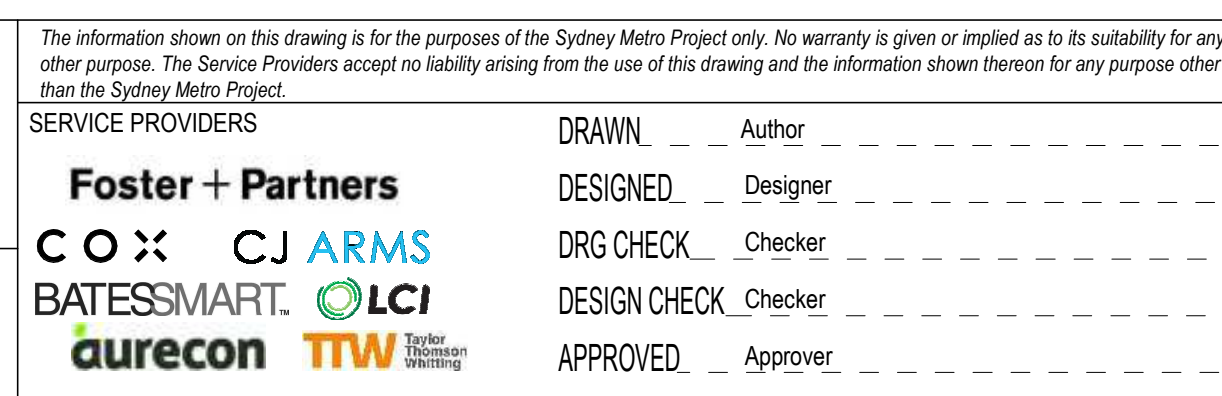
SCALE

1:100 @ A1

0 1 2 3 4 5 m



CLIENT



DRG No. SMCSWSPS-BAT-OSS-AT-DWG-930741

	PITT STREET SOUTH OVER STATION DEVELOPMENT (PSS OSD)
--	---

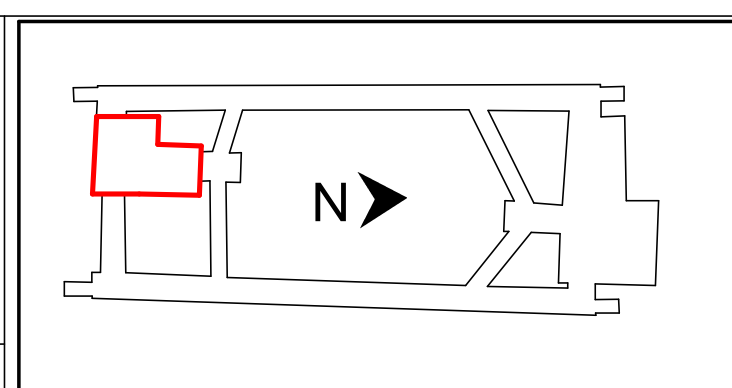
SSDA Issue
L07 - GENERAL ARRANGEMENT PLAN

STATUS: SSDA Issue

SHEET	OF	©
-------	----	---

	METRO DRG No
--	--------------

REV. 1

[illegible]

NOTE: Do not scale from this drawing.

CLIENT



ISDP



The information shown on this drawing is for the purposes of the Sydney Metro Project only. No warranty is given or implied as to its suitability for any other purpose. The Service Providers accept no liability arising from the use of this drawing and the information shown thereon for any purpose other than the Sydney Metro Project.

SERVICE PROVIDERS

Foster + Partners

COX CLAIM

BATES SMART 

purecon **TTW**

DRAWN	Author
-------	--------

DESIGNED Designer

DRG CHECK Checker

DESIGN CHECK: _____
Checker: _____

DESIGN CHECK _____

APPROVED _____ Approver _____

DRG No. SMCSWSPS-BAT-OSS-AT-DWG-931141

	PITT STREET SOUTH OVER STATION DEVELOPMENT (PSS OSD)
--	---

SSDA Issue
L11-13 - TYPICAL LOWRISE GENERAL ARRANGEMENT PLAN

STATUS: SSDA Issue

SHEET	OF
-------	----

©

METRO DRG No.

REV. F















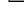
Issued under the Environmental Planning and Assessment Act 1979

Approved Section 4.55 (1A) Modification Application

No: SSD 10376 MOD 1 Granted on 24.11.21

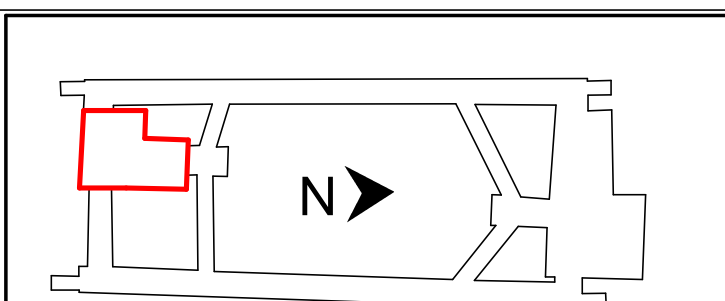
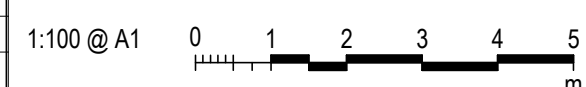
Signed: JG Sheet No: 3 of 9



- LEGEND**
-  PROPERTY BOUNDARY
 -  CONCEPT SSDA ENVELOPE
 -  OSD CORE
 -  OSD SERVICES
 -  OSD GENERAL
 -  OSD RESIDENT FACILITIES
 -  OSD-ONLY EGRESS STAIRS
 -  OSD RETAIL TENANCY
 -  1 BEDROOM APARTMENT
 -  2 BEDROOM APARTMENT
 -  3 BEDROOM APARTMENT
 -  SHARED EGRESS STAIRS
 -  STATION AREAS
(SUBJECT TO SEPARATE
DEVELOPMENT
APPROVAL)

E		18.06.21	SSDA Issue	
D		08.12.20	SSDA Issue	
C		12.11.20	SSDA Issue	
B		18.09.20	SSDA Issue	
REV.	BY	DATE	DESCRIPTION	APPD.
A1 Original		Co-ordinate System: MGA Zone 56	Height Datum: A.H.D.	This sheet may be prep

SCALE



NOTE: Do not scale from this drawing.

CLIENT



ISDP



The information shown on this drawing is for the purposes of the Sydney Metro Project only. No warranty is given or implied as to its suitability for any other purpose. The Service Providers accept no liability arising from the use of this drawing and the information shown thereon for any purpose other than the Sydney Metro Project.

SERVICE PROVIDERS

Foster + Partners

COX CJ ARM

BATESSMART.

DRAWN _____ Author _____

DESIGNED _____ Designer _____

DRG CHECK _____ Checker _____

DESIGN CHECK _____ Checker _____

DRG No. SMCSWSPS-BAT-OSS-AT-DWG-933341

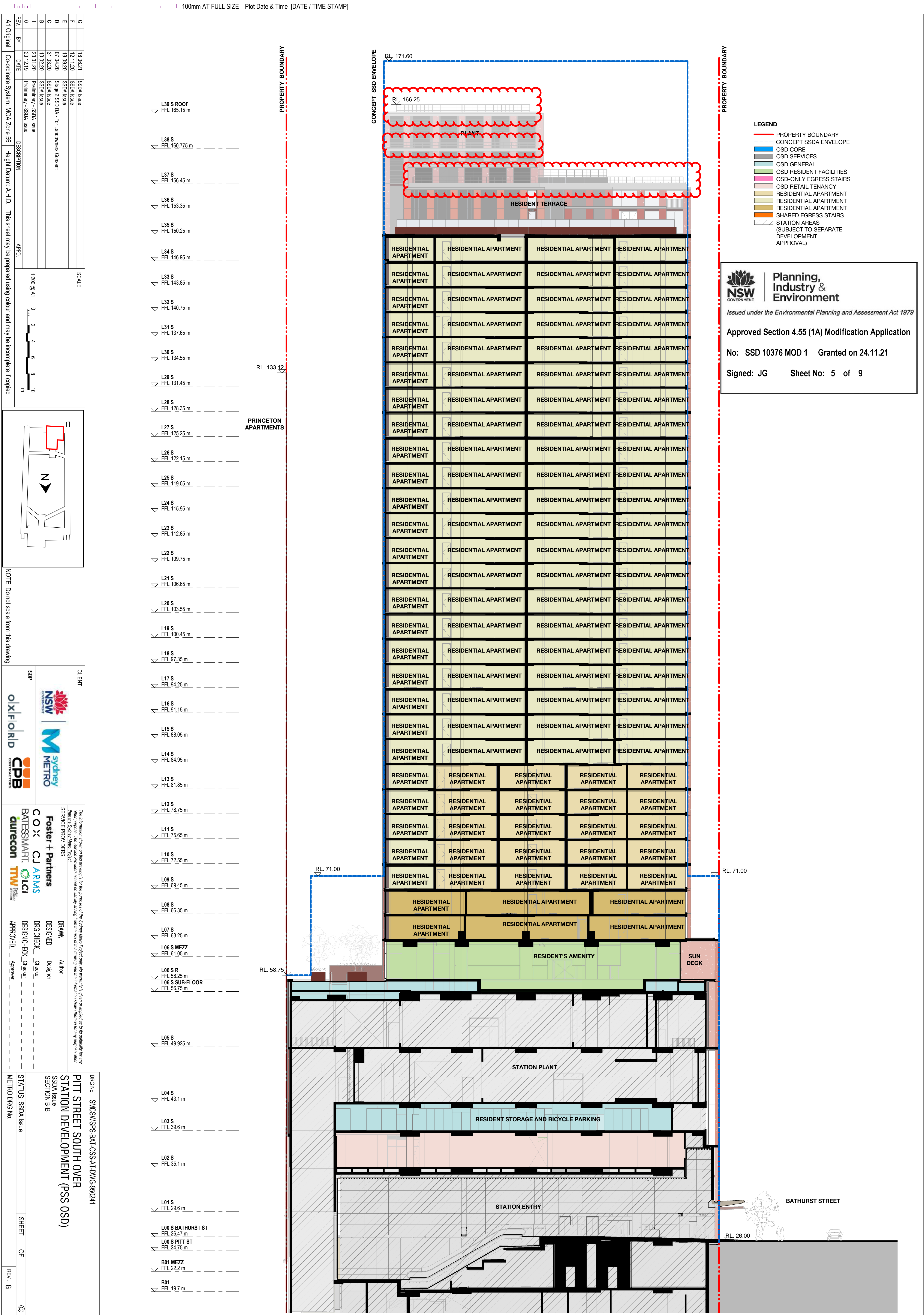
	PITT STREET SOUTH OVER STATION DEVELOPMENT (PSS OSD)
--	---

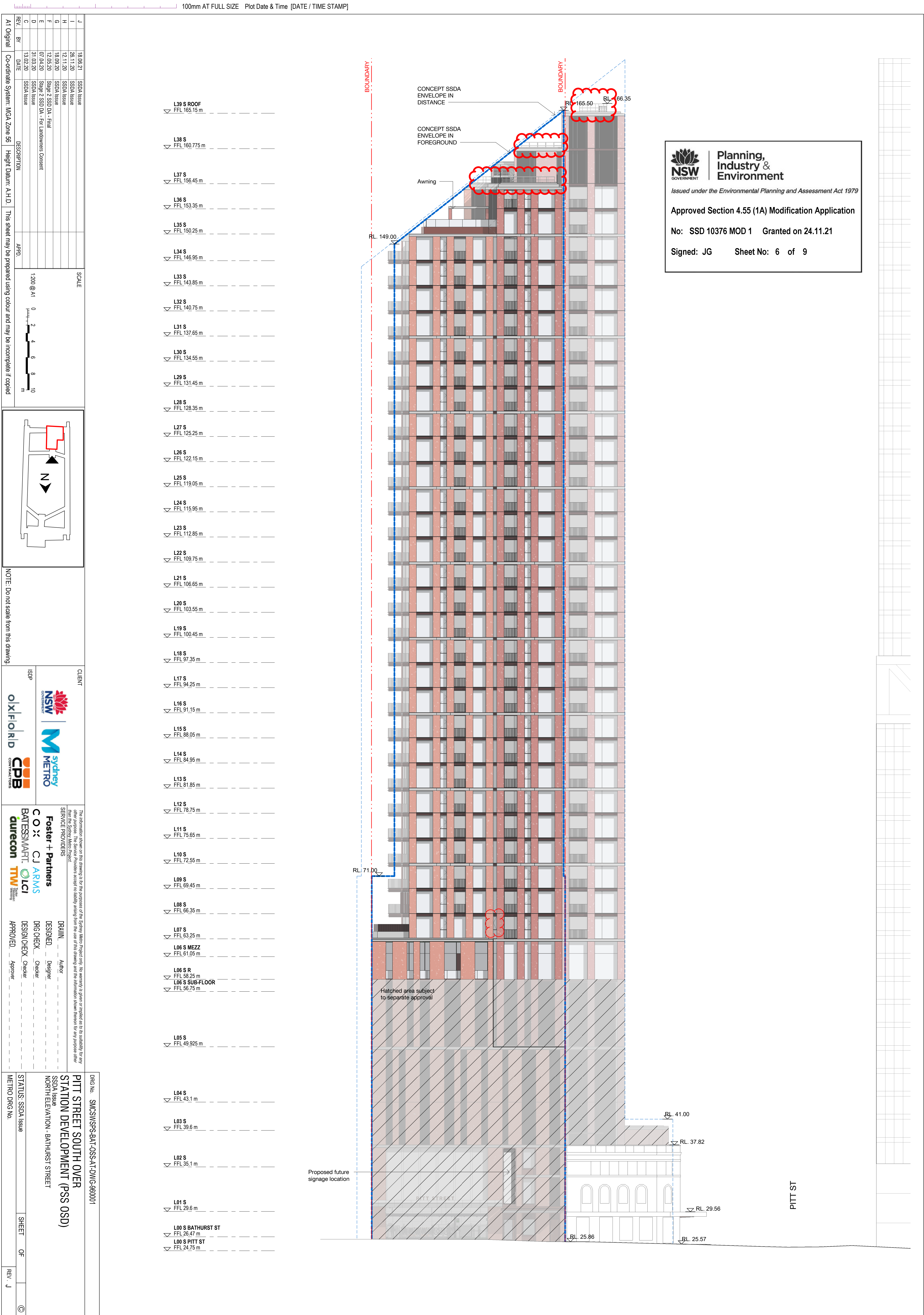
SSDA Issue
L33-34 - HIGHRISE GENERAL ARRANGEMENT PLAN

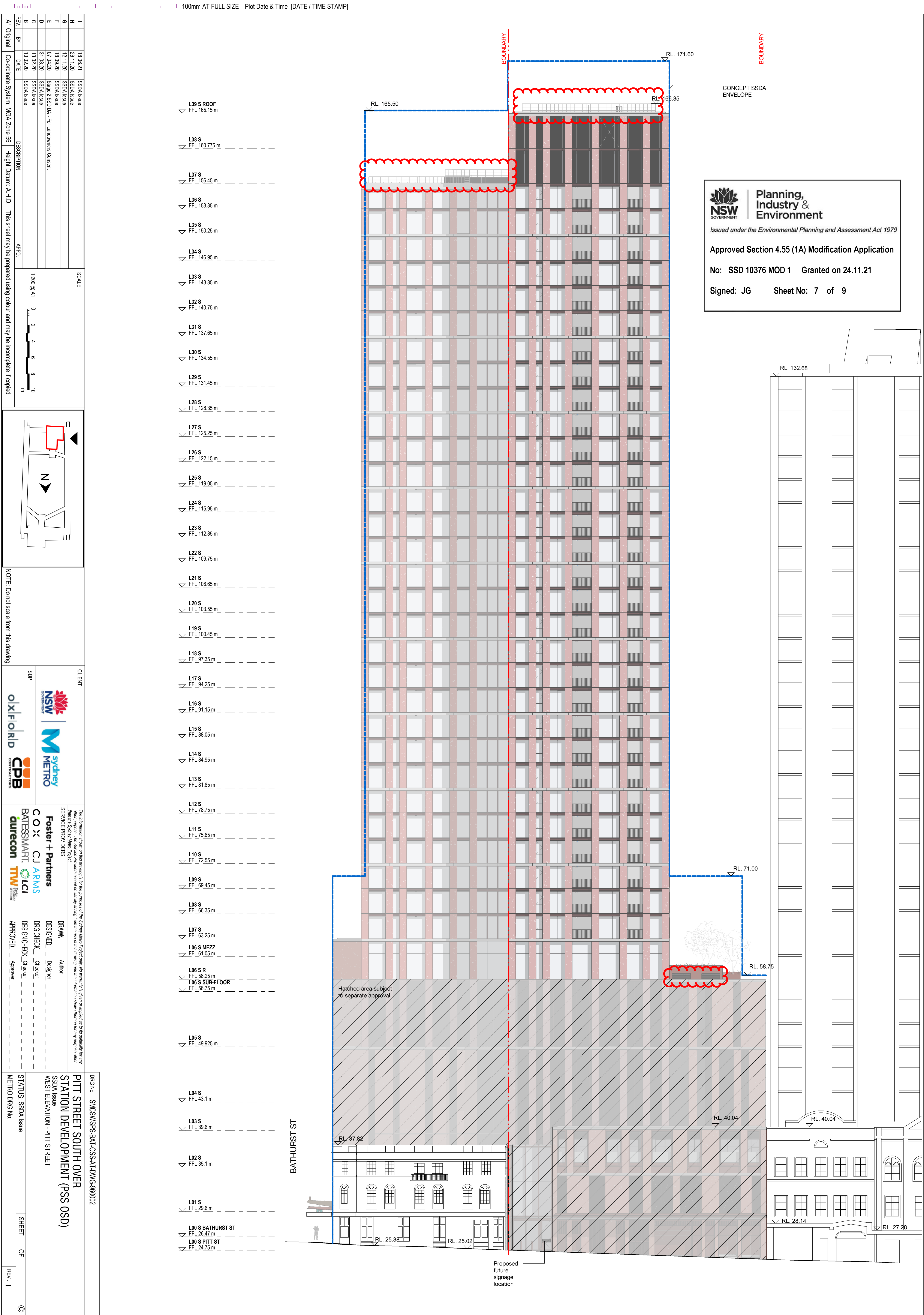
STATUS: SSDA Issue

SHEET	OF
-------	----

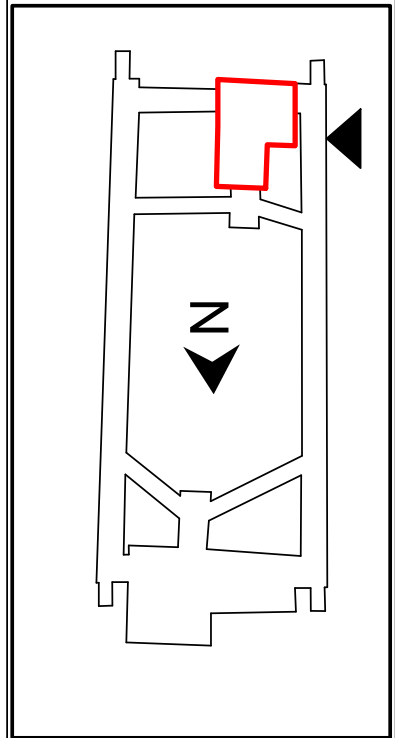
©








REV.	BY	DATE	DESCRIPTION	APPRO.
A1	Original		Co-ordinate System: MGA Zone 56	
			Height Datum: A.H.D.	
			This sheet may be prepared using colour and may be incomplete if copied	



NOTE: Do not scale from this drawing.

CLIENT	ISDP
SERVICE PROVIDERS	DESIGNED, DRAWN, DNG CHECK, DESIGN CHECK, APPROVED
	Author, Designer, Checker, Approver

DWG No.	SIMCSWSPS-BAT-0SS-AT-DWG-460002
PITT STREET SOUTH OVER STATION DEVELOPMENT (PSS OSD)	
SSDA Issue	
WEST ELEVATION - PITT STREET	
STATUS: SSDA Issue	
METRO DRG No.	
SHEET	OF
REV.	1



**Planning,
Industry &
Environment**
Issued under the Environmental Planning and Assessment Act 1979

Approved Section 4.55 (1A) Modification Application

No: SSD 10376 MOD 1 Granted on 24.11.21

Signed: JG Sheet No: 7 of 9

A diagram of a vertical container, possibly a tank or vessel, with a red box highlighting a specific region near the top. A downward-pointing arrow is located above the red box, and another downward-pointing arrow is located below the container, pointing towards the label 'Z'.

CLIENT

NSW GOVERNMENT
COMMUNICATIONS

sydney METRO

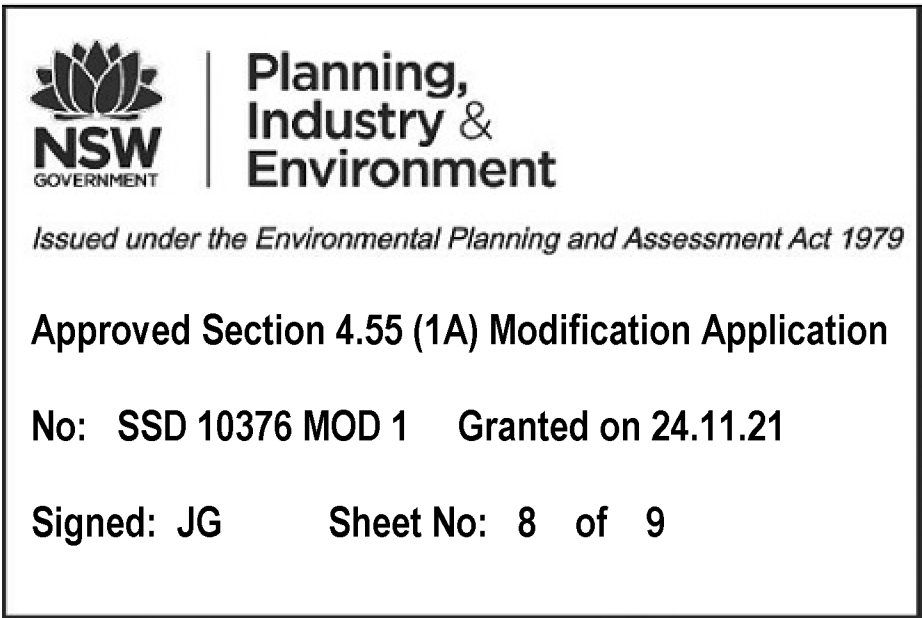
ISDP

OX|F|O|R|D

CPB CONTRACTORS

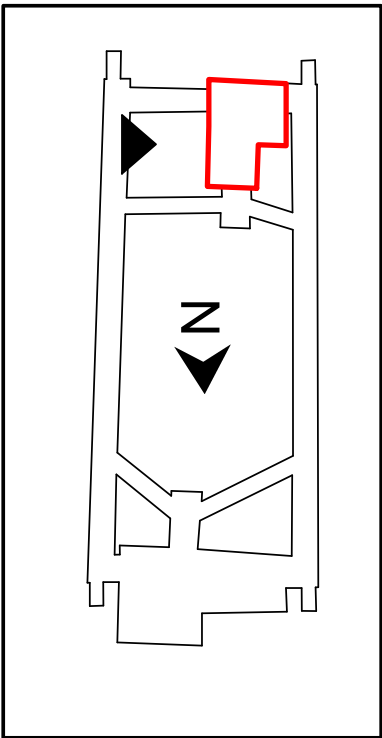
<p>PITT STREET SOUTH OVER STATION DEVELOPMENT (PSS OSD) SSDA Issue SOUTH ELEVATION</p>			
STATUS: SSDA Issue	SHEET	OF	③
METRO DRG. No.		REV. 1	

L02 S
▽ FFL 35.1 m





CONCEPT SSDA
ENVELOPE

REV.	BY	DATE	DESCRIPTION	APPD.
A1	Original		Co-ordinate System: MGA Zone 56	Height Datum: A.H.D.
This sheet may be prepared using colour and may be incomplete if copied				



NOTE: Do not scale from this drawing.



CLIENT

ISDP

Service Providers

Foster + Partners

C O X **CJ ARMS**

BATESMART **LCI**

aurecon **TTW**

DESIGNED: Designer

DWG CHECK: Checker

DESIGN CHECK: Checker

APPROVED: Approver

DWG No. **SMCSWSPS-BAT-0SS-AT-DWG-460004**

PITT STREET SOUTH OVER STATION DEVELOPMENT (PSS OSD)

SSDA Issue

EAST ELEVATION

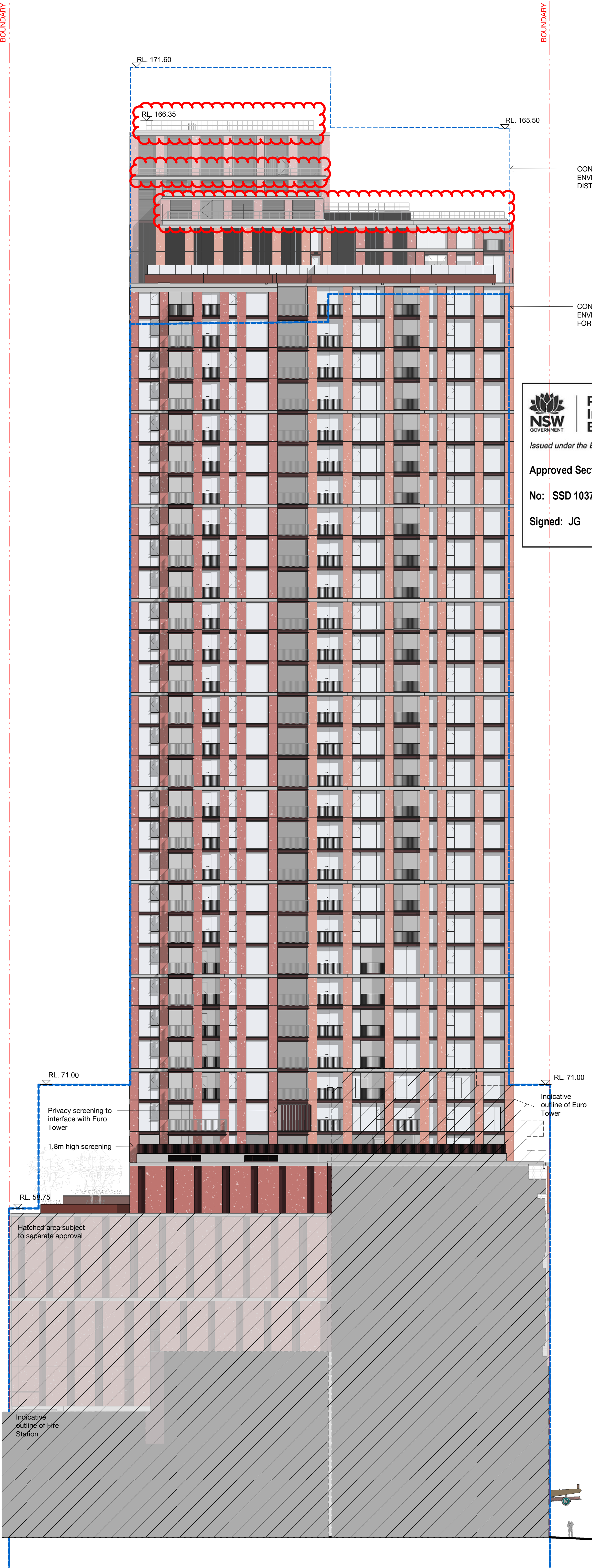
STATUS: SSDA Issue


METRO DRG No.

SHEET OF

REV. **K**

L39 S ROOF	▽	FFL 165.15 m	
L38 S	▽	FFL 160.775 m	
L37 S	▽	FFL 156.45 m	
L36 S	▽	FFL 153.35 m	
L35 S	▽	FFL 150.25 m	
L34 S	▽	FFL 146.95 m	
L33 S	▽	FFL 143.85 m	
L32 S	▽	FFL 140.75 m	
L31 S	▽	FFL 137.65 m	
L30 S	▽	FFL 134.55 m	
L29 S	▽	FFL 131.45 m	
L28 S	▽	FFL 128.35 m	
L27 S	▽	FFL 125.25 m	
L26 S	▽	FFL 122.15 m	
L25 S	▽	FFL 119.05 m	
L24 S	▽	FFL 115.95 m	
L23 S	▽	FFL 112.85 m	
L22 S	▽	FFL 109.75 m	
L21 S	▽	FFL 106.65 m	
L20 S	▽	FFL 103.55 m	
L19 S	▽	FFL 100.45 m	
L18 S	▽	FFL 97.35 m	
L17 S	▽	FFL 94.25 m	
L16 S	▽	FFL 91.15 m	
L15 S	▽	FFL 88.05 m	
L14 S	▽	FFL 84.95 m	
L13 S	▽	FFL 81.85 m	
L12 S	▽	FFL 78.75 m	
L11 S	▽	FFL 75.65 m	
L10 S	▽	FFL 72.55 m	
L09 S	▽	FFL 69.45 m	
L08 S	▽	FFL 66.35 m	
L07 S	▽	FFL 63.25 m	
L06 S MEZZ	▽	FFL 61.05 m	
L06 S R	▽	FFL 58.25 m	
L06 S SUB-FLOOR	▽	FFL 56.75 m	
L05 S	▽	FFL 49.925 m	
L04 S	▽	FFL 43.1 m	
L03 S	▽	FFL 39.6 m	
L02 S	▽	FFL 35.1 m	
L01 S	▽	FFL 29.6 m	
L00 S BATHURST ST	▽	FFL 26.47 m	
L00 S PITT ST	▽	FFL 24.75 m	





Planning, Industry & Environment

Issued under the Environmental Planning and Assessment Act 1979

Approved Section 4.55 (1A) Modification Application

No: SSD 10376 MOD 1 Granted on 24.11.21

Signed: JG Sheet No: 9 of 9

BATHURST ST