

6.4 Aileen Sage

LIVERPOOL STREET ENTRY ARCADE

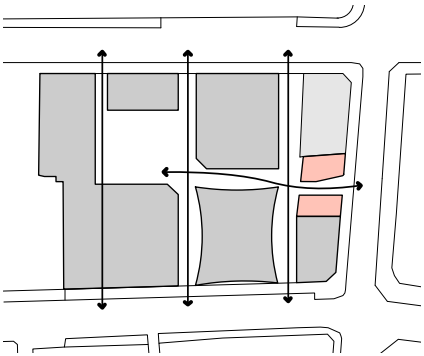
THE ARCADE

Our building is both an edge and an entry, an object and a passageway.

As an arcade it is at once a habitat for the flaneur and a finely crafted jewel, with light reflected down a central void space spanning five levels and illuminating the retail spaces from within.

Accommodating the main entry into the site's central courtyard from Liverpool street this small building draws visitors through a generous and playful series of arched forms, with retail and hospitality tenancies anchored off this central vertical and horizontal circulation spine.

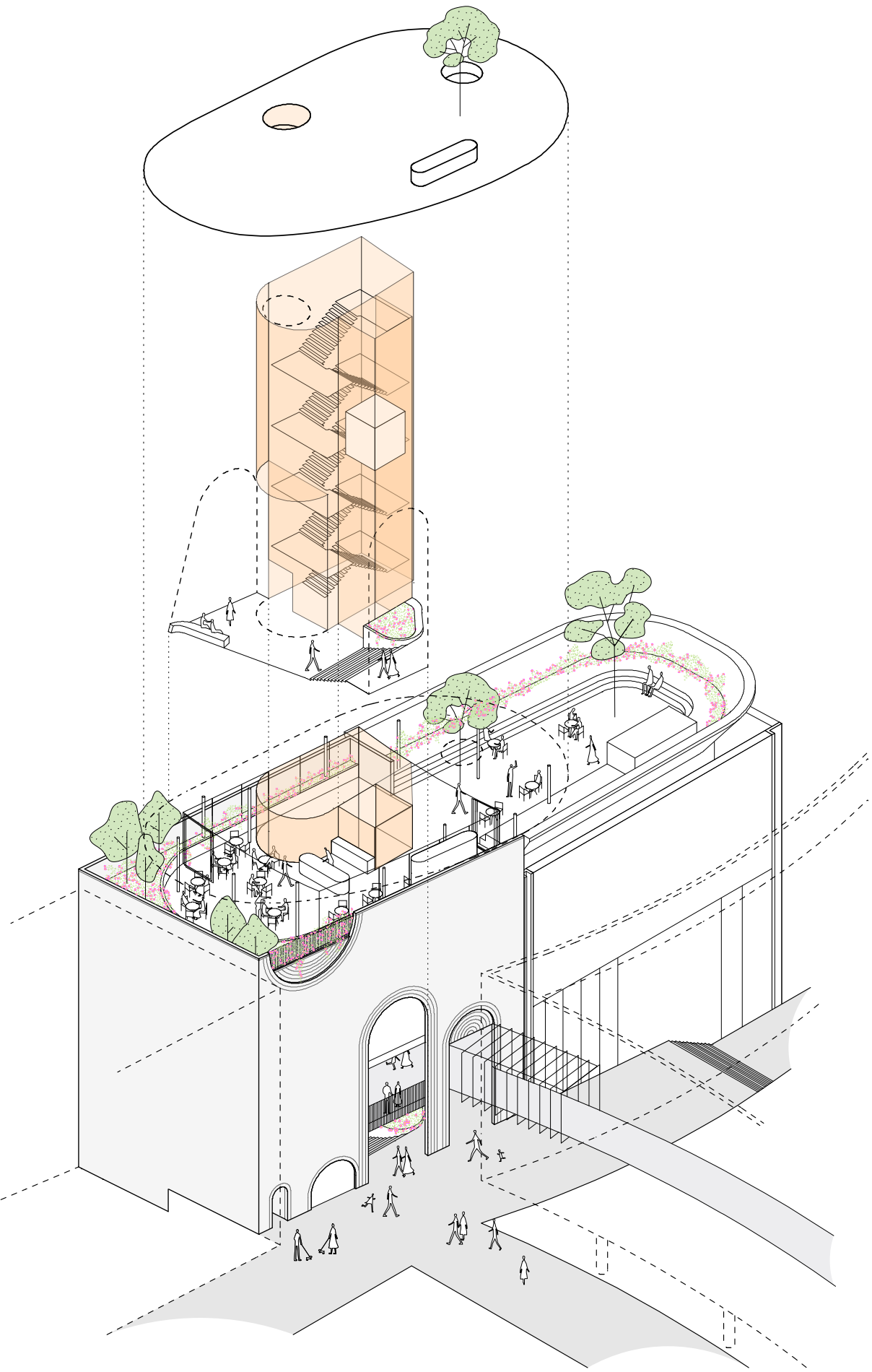
Recognised as part of a larger city precinct, the masonry form is crowned with a elliptical metallic roof which hovers above a secluded rooftop garden and peeks over the edges of the laneway and street below.



LOCATION PLAN + MOVEMENT DIAGRAM  
1:2500

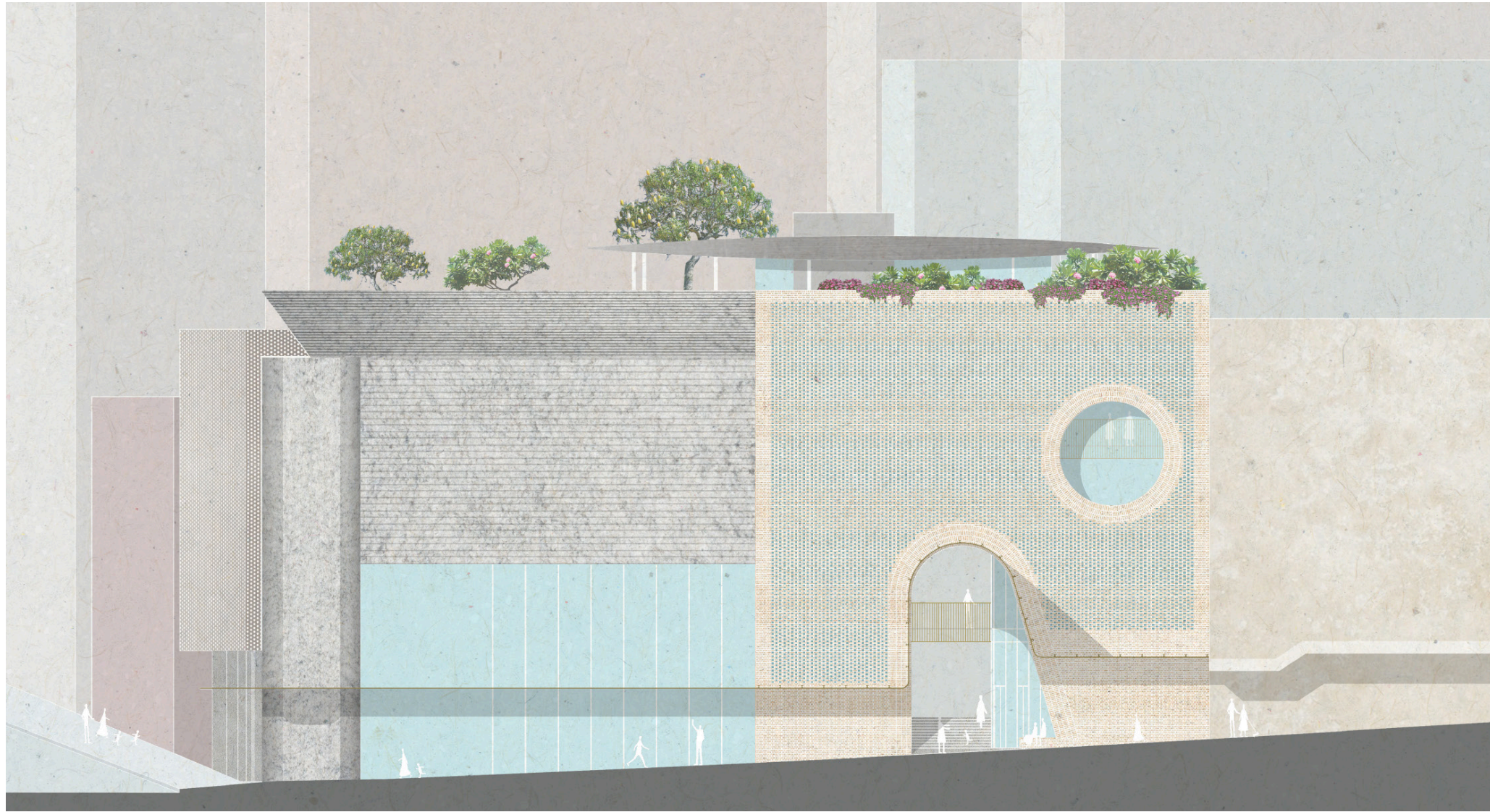


ARCADE  
Galleria Vittorio Emanuele II, Milan



AXONOMETRIC  
NTS





**SOUTH ELEVATION**  
1:250

## MATERIALS

For our podium building we were interested in a contextual response to this part of the city which we read as distinctively formed, remnant tile, stone and masonry 6 to 8 storey podium height buildings. We love the proportion of these buildings with their arched attic windows and patternation.

We have therefore aimed to create a memorable character in our building through an assemblage of masonry patterning and forms to the facade. The simple collection of arches and circles are ringed in radial brick frames with patterned infill.

Light sandstone coloured masonry sits in dialogue with the darker sandstone of the corner retail building adjacent whilst the form and proportions of these proposals have also been developed in conversation.

At ground level, a masonry seat encourages activity along the retail edge with planting additionally encouraged through the central double height arcade in conversation with the rooftop garden above.

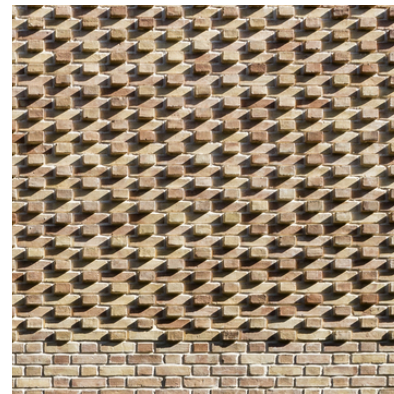
At the top level a perforated brick screen allows glimpses in and out of the planted roof terrace with the rooftop planting providing visual interest when viewed from above.



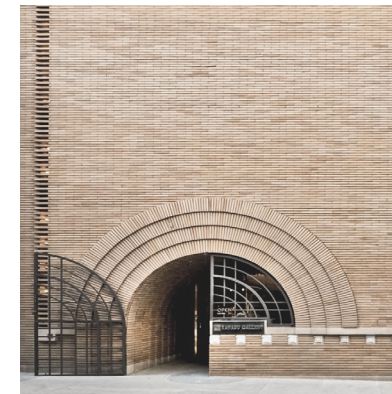
**HONED MASONRY FINISH**  
Light sandstone colour



**MASONRY SCREEN**  
Reference image: Harold Street Residence - Jackson Clements Burrows Architects



**PATTERNED MASONRY FACADE**  
Expressed header bricks

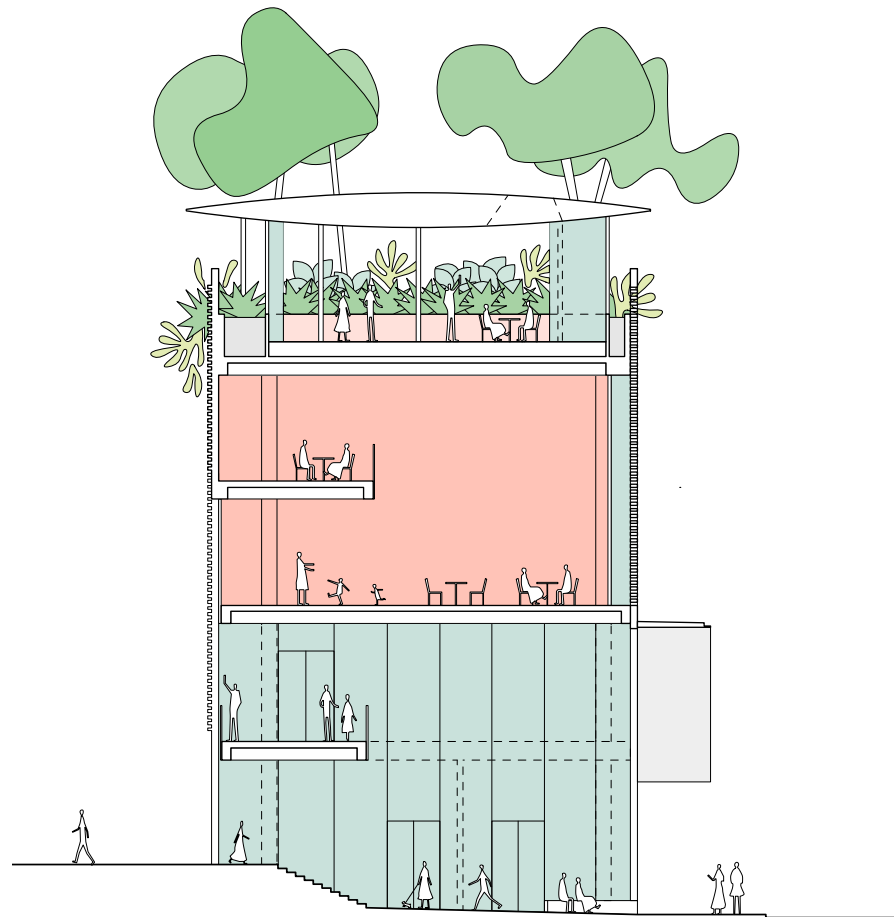


**MASONRY ARCH DETAIL**  
Reference image: V. C. Morris Gift Shop - Frank Lloyd Wright



**METAL ROOF**  
Reference Image: Nakanotani Gazebo - Kazuyo Sejima/SANAA

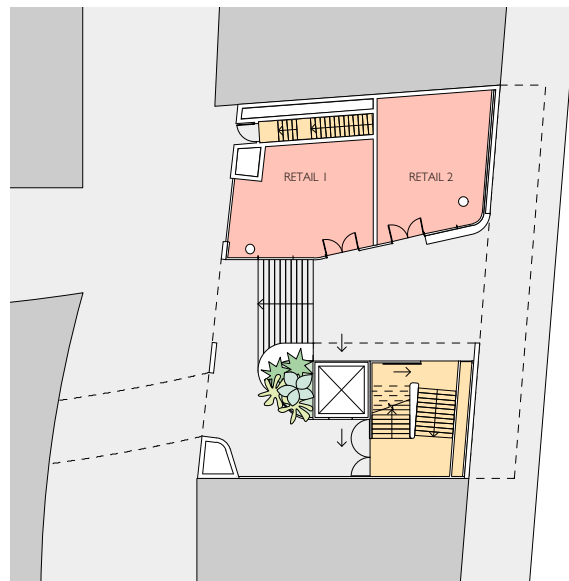




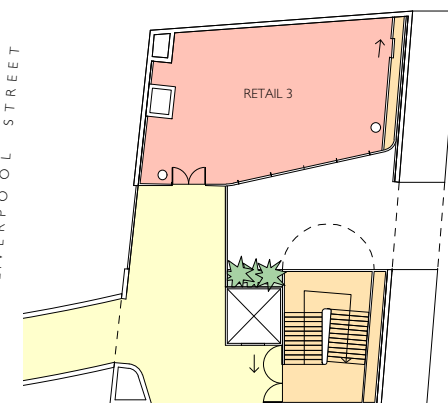
SECTION  
1:250



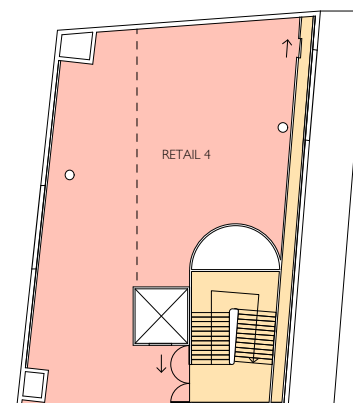
ROOF TOP VENUE



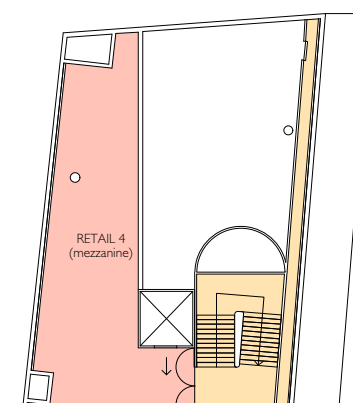
GROUND FLOOR  
1:400



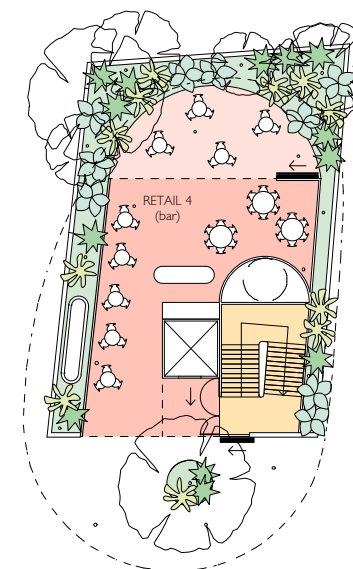
FIRST FLOOR  
1:400



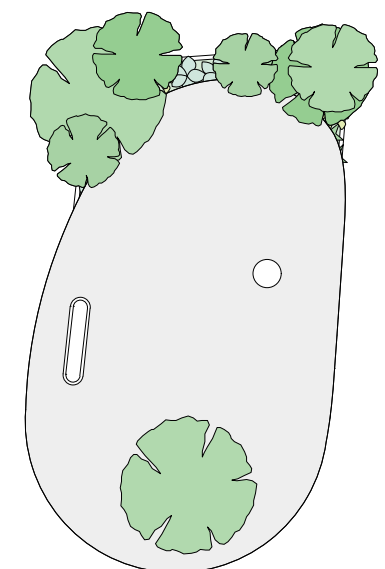
SECOND FLOOR  
1:400



THIRD FLOOR  
1:400



FOURTH FLOOR  
1:400



ROOF PLAN  
1:400