

POLLY HARBISON DESIGN

1. SITE LOCATION AND ROLE WITHIN PRECINCT

Positioned in the corner of the site - at the intersection of Liverpool and Pitt Street, we feel this building plays an important role in becoming a landmark gateway to the retail precinct.

2. ADDRESSING THE CORNER - KNUCKLE

In an attempt to match the scale of neighbouring narrower frontages we inserted a knuckle which constricts what was a bulky rounded edge. In doing so we are promoting the use of the laneways. The knuckle also serves as a civic gesture which designates a space where public artworks can be displayed to draw people into the retail precinct.

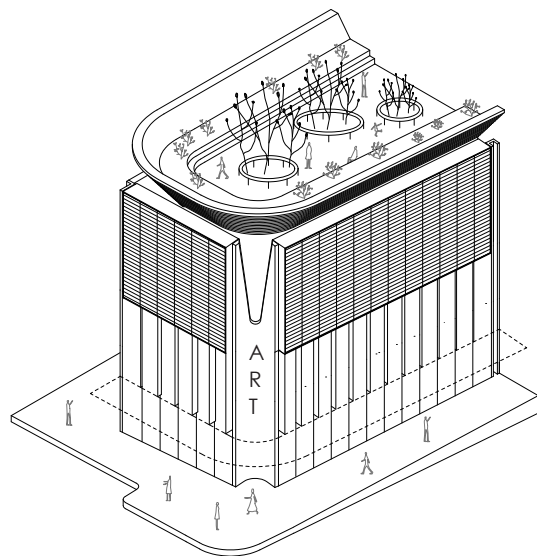
3. SOLID AND TRANSPARENT

When studying the typology of high end retail, we noticed a recurring condition which creates a permeable ground plane with an iconic "billboard" above. Starting with this idea we introduced a gradient of transparency with a finely glazed and permeable ground plane and stone screen which veils the destination retail and hospitality spaces above. In playing with these ideas around gradients of permeability as you move up the building, it allows for diverse facade conditions which speak to the scales of public interaction happening on the street and the private tenancies within.

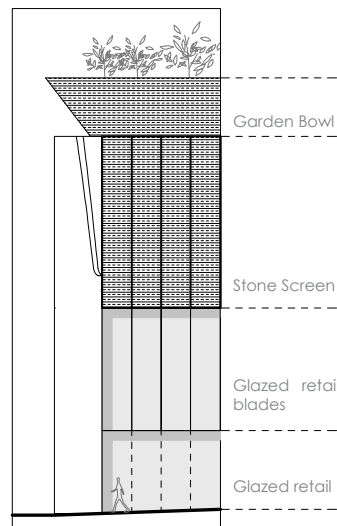
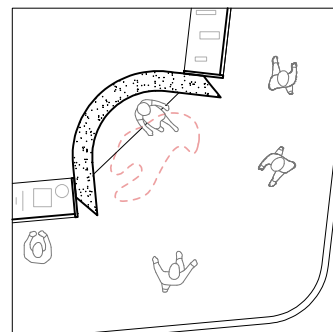
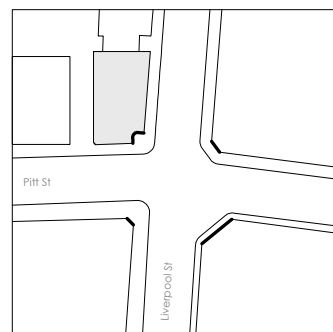
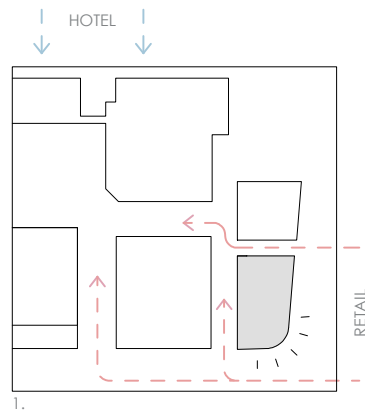
Tessellated sandstone bricks create a varied and dynamic facade as you walk around and within the building, offering glimpses into the activity inside and the city outside.

4. CROWN / BOWL

Sitting atop the structure is a sweeping sandstone bowl which holds a rooftop garden and caters to the neighbouring rooftop bar. Seats are carved into the bowl and allow visitors to enjoy views of the city.



Axonometric



3.



Corner of Liverpool and Pitt Street perspective

SPACES



LEGEND

- 1. Roof top garden
- 2. WC mezzanine
- 3. Level 2 retail/hospitality
- 4. Level 1 retail
- 5. Mezzanine
- 6. BOH/storage
- 7. Double height retail
- 8. Subfloor/plant room
- 9. Double height display cavity

MATERIALS



LEGEND

- 1. Sandstone rough cut
- 2. Travertine
- 3. Honed sanstone
- 4. Brass
- 5. Vegetation

REFERENCE PROJECTS

