

SITE PLAN PROPOSED DEVELOPMENT

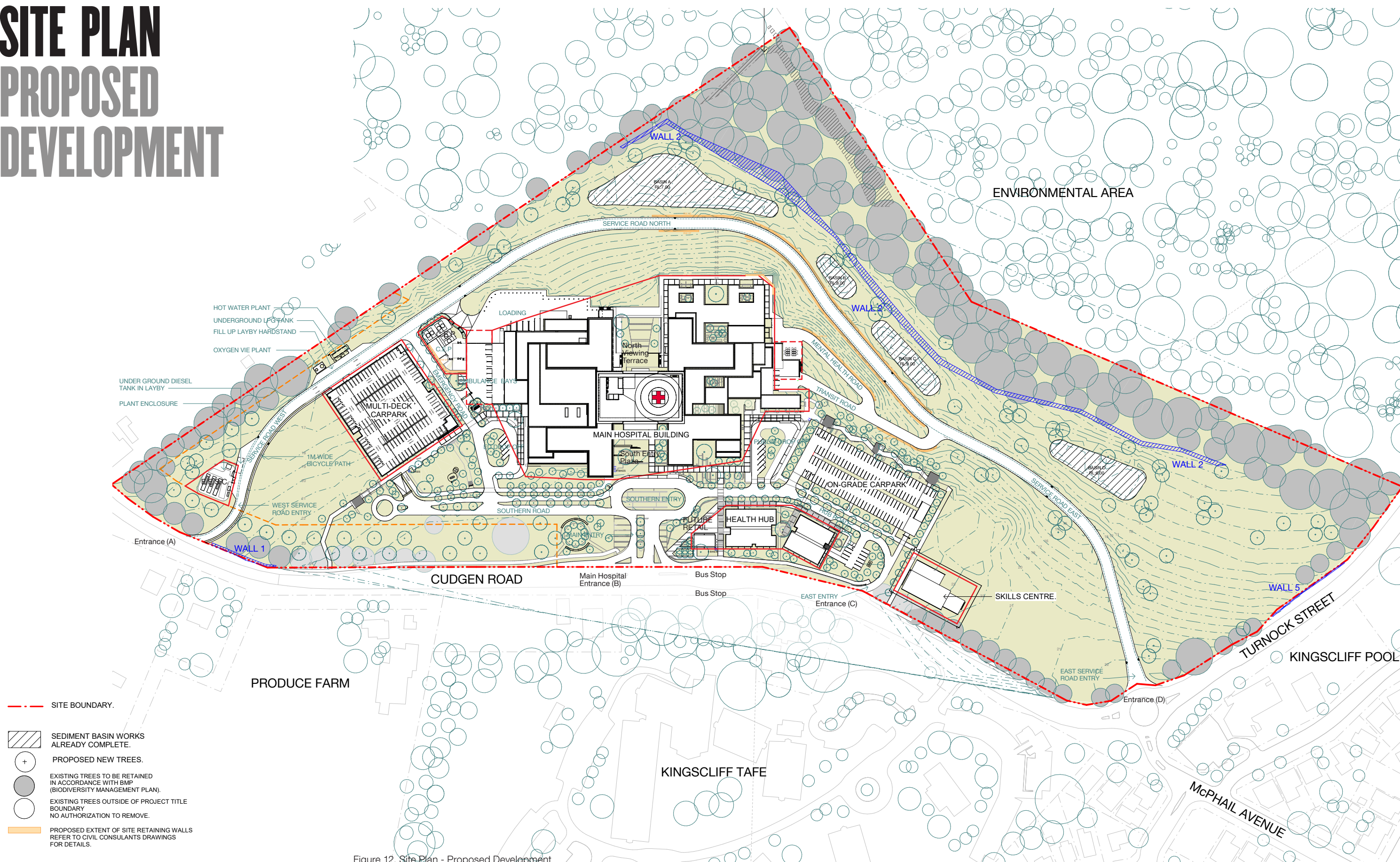


Figure 12. Site Plan - Proposed Development

HOSPITAL BUILDING, SITE ANCHOR

The hospital building, its location and orientation is a key anchor element for the site and future master-plan development. The hospital located on the ridge line is set back from Cudgen Road at the deepest width of the site, where it holds a formal parallel orientation with the main entrance boundary. The setback establishes 65m deep civic forecourt space.

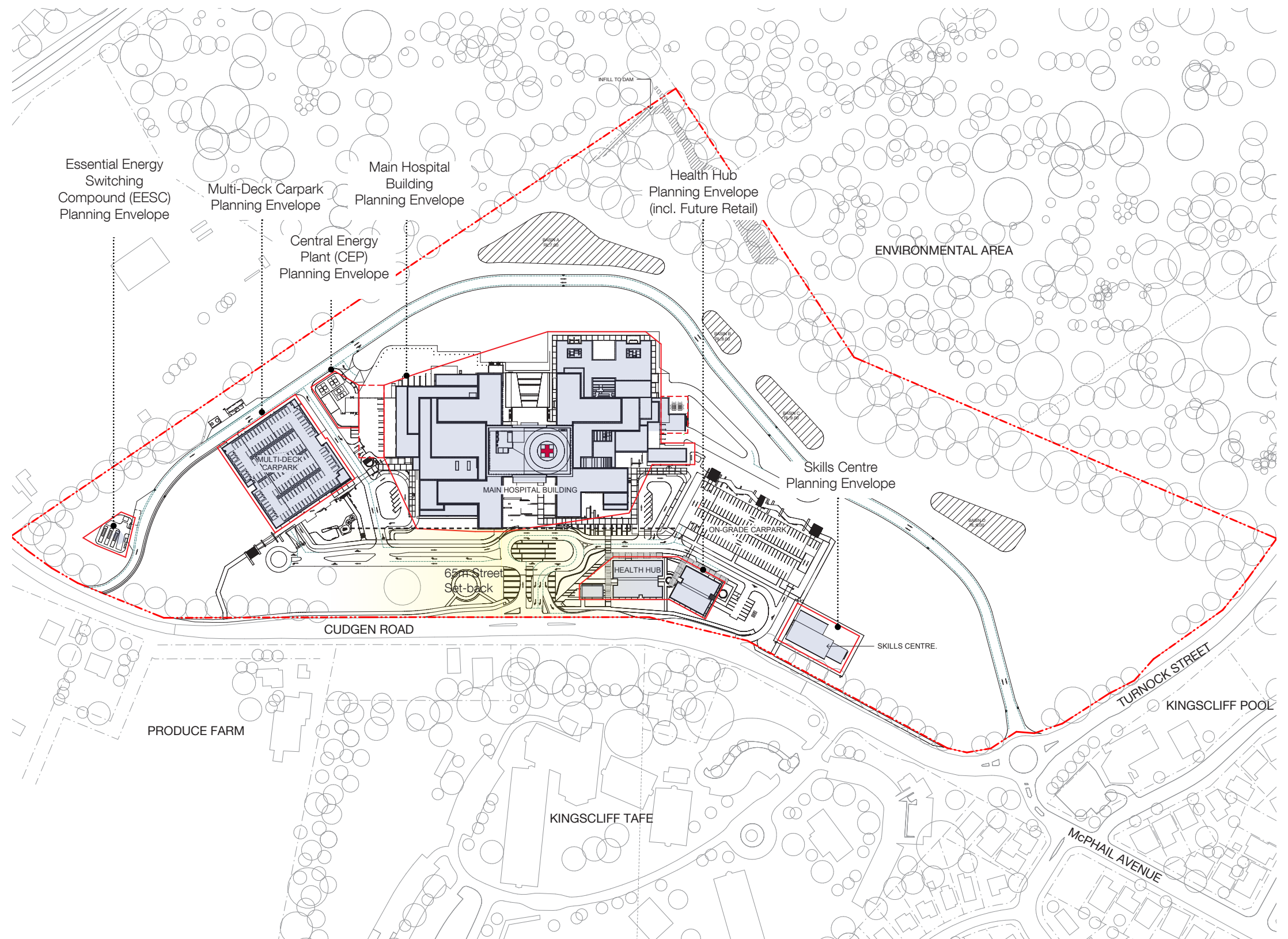


Figure 13. Site Plan - Building Anchor & Planning Envelope

NORTH-SOUTH AXIS, OR CIVIC ENTRY

The entrance to Tweed Valley Hospital needs to be clear, civic and welcoming. A key building organising principle is the proposed north-south civic main public entrance axis. The site entry and hospital front door align and are framed by the building form to establish a view corridor to the north environmental area. This civic axis is designed as a celebrated double height space, activated at its north end with a public café with outdoor viewing terrace overlooking the environmental area beyond. The ground plane slopes away steeply to the north.

EAST-WEST AXIS, OR GREEN SPINE.

The ridge is a valuable site feature, which has been translated within the site ordering and landscape strategy providing a landscaped pedestrianised pathway providing an access route to future ancillary program located along the ridge line, including the Multi-Deck Carpark to the west of the hospital.

A landscape dedicated footpath (Green Spine) is connected through the east and west flanking hospital entrances continuing internally as the hospital street, supported by a landscaped courtyard adjacent the east flanking Specialist Entrance. The courtyard provides daylight and landscape view amenity locally to ground and lower ground levels. The courtyard also assists to support way-finding, orientating hospital users on the east flank of the hospital.

Beyond the hospital the Green Spine provides a scenic nature walk supported by seating and shelter. As a master-plan site ordering principle the Green Spine links the hospital to future complementary program.

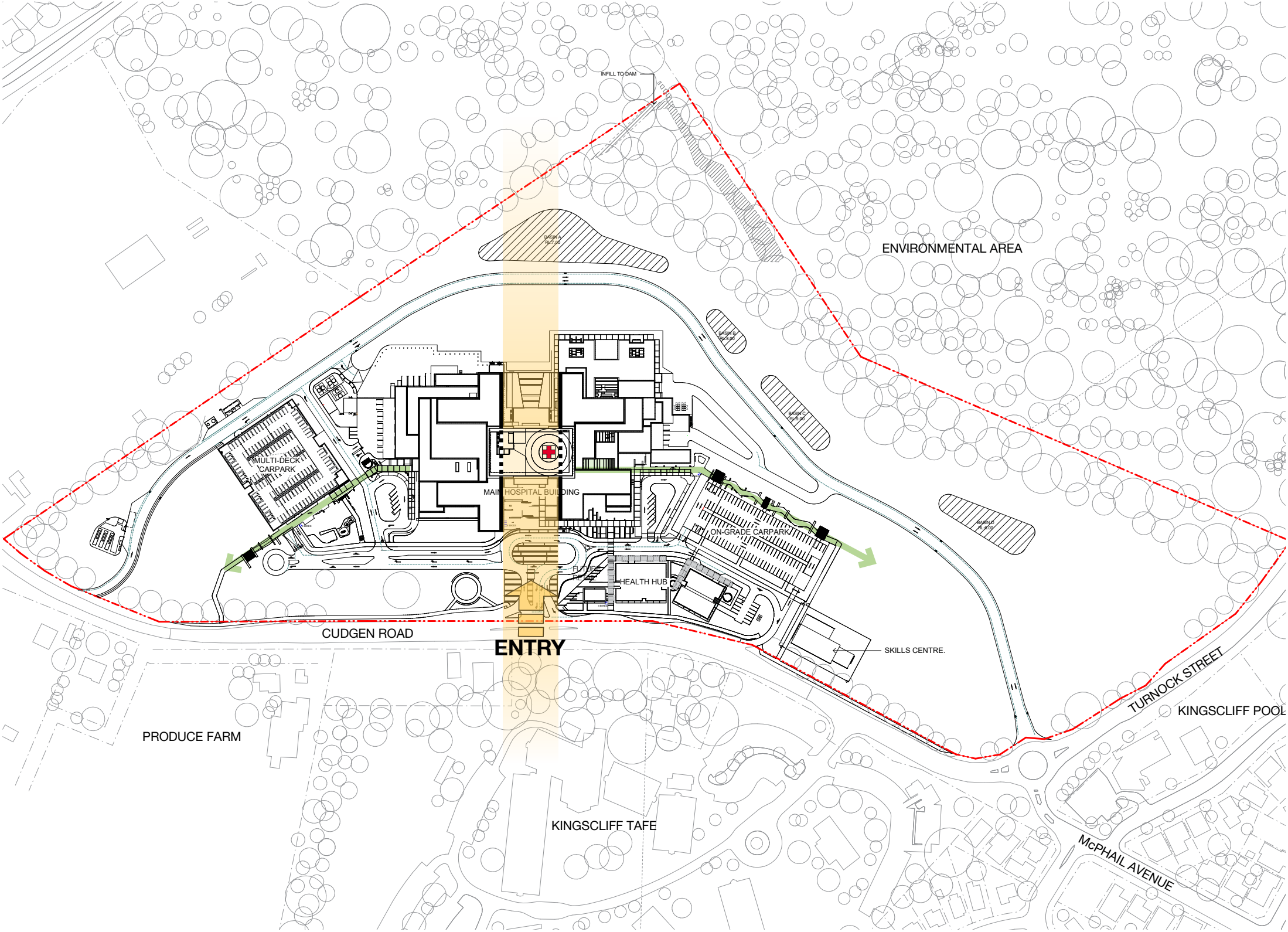


Figure 14. Hospital - North South Civic Axis

