

1 GROUND FLOOR  
Plan 1 : 200

KEY PLAN			
REV	DESCRIPTION	DRN	DATE
1	ISSUED FOR SSD 2	BM	06/09/19

**COPYRIGHT**  
ALL RIGHTS RESERVED. THIS WORK IS COPYRIGHT AND CANNOT BE REPRODUCED OR COPIED IN ANY FORM OR BY ANY MEANS (GRAPHIC, ELECTRONIC OR MECHANICAL INCLUDING PHOTOCOPYING) WITHOUT THE WRITTEN PERMISSION OF THE PRINCIPAL UNDER THE TERMS OF THE CONTRACT. ANY LICENCE, EXPRESS OR IMPLIED, TO USE THE DOCUMENT FOR ANY PURPOSE WHATSOEVER IS RESTRICTED TO THE TERMS OF THE AGREEMENT OR IMPLIED AGREEMENT WITH THE PRINCIPAL UNDER THE TERMS OF THE CONTRACT.

**DIMENSIONS**  
**USE FIGURED DIMENSIONS, DO NOT SCALE. CONTRACTORS MUST VERIFY ALL DIMENSIONS ON THE SITE BEFORE COMMENCING ANY WORK OR MAKING ANY SHOP DRAWING WHICH MUST BE SUBMITTED AND REVIEWED BEFORE MANUFACTURE.**

**FIXTURES, FITTINGS & EQUIPMENT SPECIFICATIONS**  
SUBSTITUTE FF&E EQUIPMENT SPECIFICATIONS  
THE FIT-OUT DESIGN AND DOCUMENTATION HAS BEEN COMPLETED ON THE BASIS OF FF&E AND EQUIPMENT ADVISED TO THIS OFFICE AT THE TIME OF BRIEFING THE DESIGN. THE DESIGN PROVISIONS FOR FF&E AND EQUIPMENT INCORPORATES SPATIAL ALLOCATIONS, SERVICING, LOADING AND ACCESS CLEARANCES AND WHERE APPROPRIATE SERVICES REQUIREMENTS, HAVING DUE REGARD FOR SURROUNDING FIXTURES AND FITTINGS. IT SHOULD BE NOTED THAT SUBSTITUTE FF&E OR EQUIPMENT WITH ALTERNATE SPECIFICATIONS SHOULD NOT BE PROCURED PRIOR TO VALIDATING THOSE SPECIFICATIONS AGAINST THE ITEM CONTROL SCHEDULE AND DESIGN PROVISIONS IN THE MODEL. THIS OFFICE ACCEPTS NO RESPONSIBILITY FOR THE PROCUREMENT OF SUBSTITUTE FF&E AND EQUIPMENT WHICH HAS NOT BEEN REVIEWED AND VALIDATED AGAINST THE ORIGINAL DESIGN PROVISIONS.

**SERVICE POINTS DISCLAIMER**  
THE SERVICE POINTS IDENTIFIED ON THESE DRAWINGS HAVE BEEN OVERLAYED FROM THE BUILDING SERVICES ENGINEERING MODEL, AND ARE PROVIDED FOR INFORMATION AND SET-OUT PURPOSES ONLY. WE HAVE BEEN ADVISED BY THE SERVICES ENGINEERS THAT THE POINTS REPRESENTED ON THESE DRAWINGS ARE CORRECT AT THE TIME OF PUBLICATION. THIS OFFICE DOES NOT WARRANT THE ACCURACY OF THIS DATA. REFER TO THE BUILDING SERVICES ENGINEERING DOCUMENTATION FOR THE INSTALLATION OF THE SERVICES POINTS, AND THE INTERFACE BETWEEN THE SERVICES POINTS AND THE RESPECTIVE ENGINEERING SYSTEMS.

**ISSUED FOR INFORMATION**

ARCHITECTS

**STH**

**BATESSMART.**

ABN: 21 134 470 065  
LEVEL 4, 89 YORK STREET  
SYDNEY NSW 2000, AUSTRALIA  
PH: (02) 8299 4600 FAX: (03) 9885 2455

**M12147**  
43 BRISBANE STREET,  
SURREY HILLS, NSW 2010  
ABN: 68 094 740 986 PH: (02) 8354 5100  
E: syd@batesmart.com.au

THIS ARCHITECTURAL DESIGN IS THE COPYRIGHT OF SILVER THOMAS HANLEY AND BATES SMART AND SHALL NOT BE REPRODUCED WITHOUT THEIR WRITTEN PERMISSION

PROJECT MANAGER

**TSA**  
MANAGEMENT

CLIENT

NSW GOVERNMENT

Health Infrastructure

Health Northern NSW Local Health District

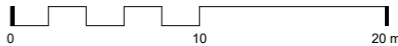
PROJECT

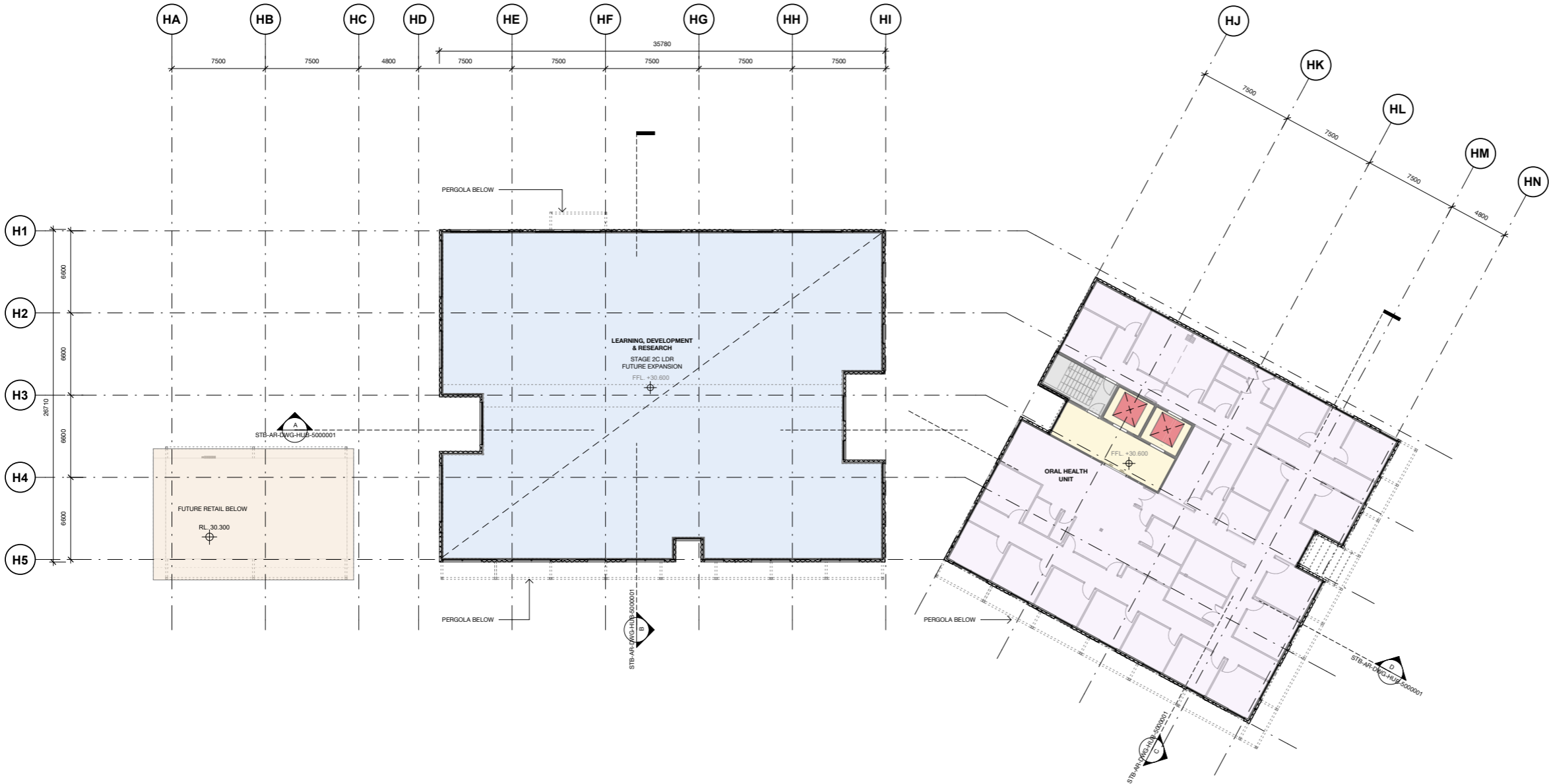
**TWEED VALLEY HOSPITAL**

DRAWING TITLE

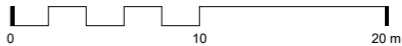
**HEALTH HUB GROUND LEVEL**

SCALE	DATE	DRAWN BY	CHECKED
1 : 200@A1	06/09/19	AO	BS
1 : 400@A3			
PROJECT No	DRAWING No	REVISION	
10363	STB-AR-SKE-HUB-2000001	1	





1 LEVEL 01  
1 : 200



KEY PLAN			
REV	DESCRIPTION	DRN	DATE
1	ISSUED FOR SSD 2	BM	06/09/19

**COPYRIGHT**  
ALL RIGHTS RESERVED. THIS WORK IS COPYRIGHT AND CANNOT BE REPRODUCED OR COPIED IN ANY FORM OR BY ANY MEANS (GRAPHIC, ELECTRONIC OR MECHANICAL INCLUDING PHOTOCOPYING) WITHOUT THE WRITTEN PERMISSION OF THE PRINCIPAL UNDER THE TERMS OF THE CONTRACT. ANY LICENCE, EXPRESS OR IMPLIED, TO USE THE DOCUMENT FOR ANY PURPOSE WHATSOEVER IS RESTRICTED TO THE TERMS OF THE AGREEMENT OR IMPLIED AGREEMENT WITH THE PRINCIPAL UNDER THE TERMS OF THE CONTRACT.

**DIMENSIONS**  
**USE FIGURED DIMENSIONS. DO NOT SCALE. CONTRACTORS MUST VERIFY ALL DIMENSIONS ON THE SITE BEFORE COMMENCING ANY WORK OR MAKING ANY SHOP DRAWING WHICH MUST BE SUBMITTED AND REVIEWED BEFORE MANUFACTURE.**

**FIXTURES, FITTINGS & EQUIPMENT SPECIFICATIONS**  
SUBSTITUTE FF&E EQUIPMENT SPECIFICATIONS  
THE FIT-OUT DESIGN AND DOCUMENTATION HAS BEEN COMPLETED ON THE BASIS OF FF&E AND EQUIPMENT ADVISED TO THIS OFFICE AT THE TIME OF BRIEFING THE DESIGN. THE DESIGN PROVISIONS FOR FF&E AND EQUIPMENT INCORPORATES SPATIAL ALLOCATIONS, SERVICING, LOADING AND ACCESS CLEARANCES AND WHERE APPROPRIATE SERVICES REQUIREMENTS, HAVING DUE REGARD FOR SURROUNDING FIXTURES AND FITTINGS. IT SHOULD BE NOTED THAT SUBSTITUTE FF&E OR EQUIPMENT WITH ALTERNATE SPECIFICATIONS SHOULD NOT BE PROCURED PRIOR TO VALIDATING THOSE SPECIFICATIONS AGAINST THE ITEM CONTROL SCHEDULE AND DESIGN PROVISIONS IN THE MODEL. THIS OFFICE ACCEPTS NO RESPONSIBILITY FOR THE PROCUREMENT OF SUBSTITUTE FF&E AND EQUIPMENT WHICH HAS NOT BEEN REVIEWED AND VALIDATED AGAINST THE ORIGINAL DESIGN PROVISIONS.

**SERVICE POINTS DISCLAIMER**  
THE SERVICE POINTS IDENTIFIED ON THESE DRAWINGS HAVE BEEN OVERLAYED FROM THE BUILDING SERVICES ENGINEERING MODEL AND ARE PROVIDED FOR INFORMATION AND SET-OUT PURPOSES ONLY. WE HAVE BEEN ADVISED BY THE SERVICES ENGINEERS THAT THE POINTS REPRESENTED ON THESE DRAWINGS ARE CORRECT AT THE TIME OF PUBLICATION. THIS OFFICE DOES NOT WARRANT THE ACCURACY OF THIS DATA. REFER TO THE BUILDING SERVICES ENGINEERING DOCUMENTATION FOR THE INSTALLATION OF THE SERVICE POINTS, AND THE INTERFACE BETWEEN THE SERVICE POINTS AND THE RESPECTIVE ENGINEERING SYSTEMS.

**ISSUED FOR INFORMATION**

ARCHITECTS

**M12147**  
43 BRISBANE STREET,  
SURRY HILLS, NSW 2010  
ABN: 68 094 740 986 PH: (02) 8354 5100  
E: syd@batesmart.com.au

ABN: 21 134 470 065  
LEVEL 4, 89 YORK STREET  
SYDNEY NSW 2000, AUSTRALIA  
PH: (02) 8299 4600 FAX: (03) 9885 2455

THIS ARCHITECTURAL DESIGN IS THE COPYRIGHT OF SILVER THOMAS HANLEY AND BATES SMART AND SHALL NOT BE REPRODUCED WITHOUT THEIR WRITTEN PERMISSION

PROJECT MANAGER

CLIENT

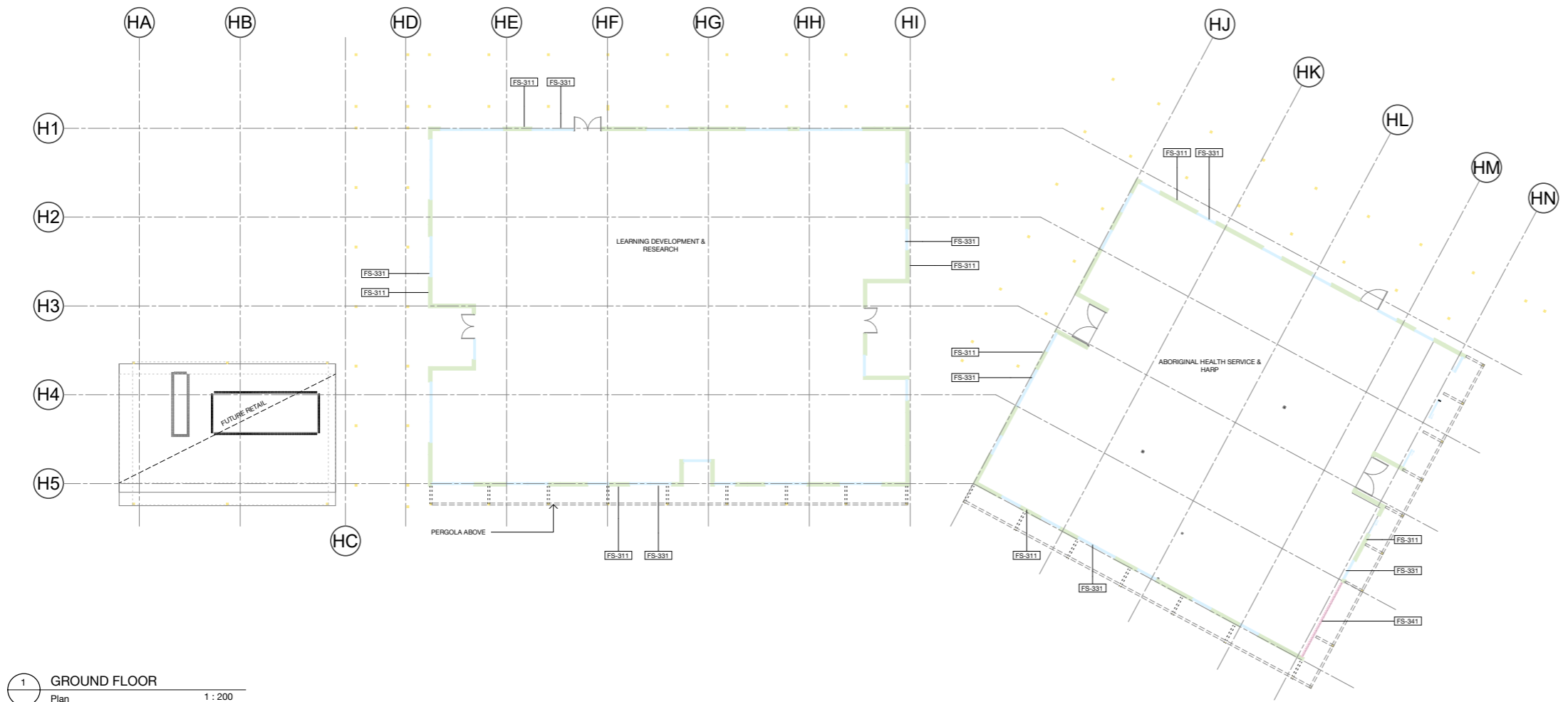
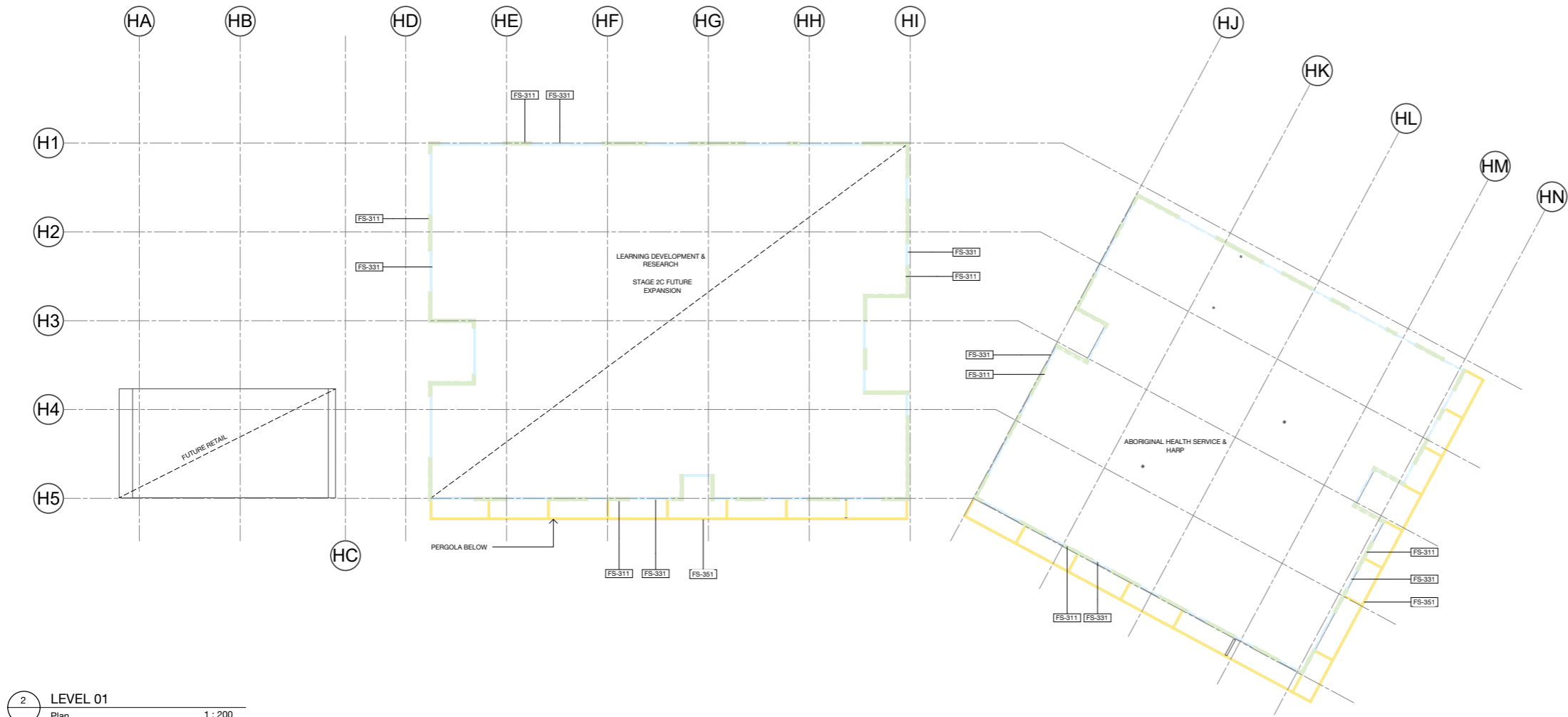
PROJECT

**TWEED VALLEY HOSPITAL**

DRAWING TITLE

**HEALTH HUB LEVEL 01**

SCALE	DATE	DRAWN BY	CHECKED
1 : 200@A1	06/09/19	AO	BS
1 : 400@A3			
PROJECT No	DRAWING No	REVISION	
10363	STB-AR-SKE-HUB-2001001	1	



**FACADE TYPE SCOPING LEGEND**

- |  |   |  |
|--|---|--|
| <span style="color: green;">—</span> <b>FS-311</b> PRECAST CONCRETE PANEL. PIGMENTED. FINISH TBC     | <span style="color: pink;">—</span> <b>FS-341</b> PLANT SCREEN LOUVRE SYSTEM FINISHES TBC | <span style="color: yellow;">—</span> <b>FS-351</b> ATTACHED CANOPIES POWDERCOAT STEEL TBC |
| <span style="color: lightblue;">—</span> <b>FS-331</b> WINDOW WALL. SLAB TO SLAB FULL HEIGHT GLAZING |   |  |



KEY PLAN			
REV	DESCRIPTION	DRN	DATE
1	ISSUED FOR SSD 2	BM	06/09/19

**COPYRIGHT**  
ALL RIGHTS RESERVED. THIS WORK IS COPYRIGHT AND CANNOT BE REPRODUCED OR COPIED IN ANY FORM OR BY ANY MEANS (GRAPHIC, ELECTRONIC OR MECHANICAL INCLUDING PHOTOCOPYING) WITHOUT THE WRITTEN PERMISSION OF THE PRINCIPAL UNDER THE TERMS OF THE CONTRACT. ANY LICENCE, EXPRESS OR IMPLIED, TO USE THE DOCUMENT FOR ANY PURPOSE WHATSOEVER IS RESTRICTED TO THE TERMS OF THE AGREEMENT OR IMPLIED AGREEMENT WITH THE PRINCIPAL UNDER THE TERMS OF THE CONTRACT.

**DIMENSIONS**  
**USE FIGURED DIMENSIONS. DO NOT SCALE. CONTRACTORS MUST VERIFY ALL DIMENSIONS ON THE SITE BEFORE COMMENCING ANY WORK OR MAKING ANY SHOP DRAWING WHICH MUST BE SUBMITTED AND REVIEWED BEFORE MANUFACTURE.**

**FIXTURES, FITTINGS & EQUIPMENT SPECIFICATIONS**  
SUBSTITUTE FF&E EQUIPMENT SPECIFICATIONS  
THE FIT-OUT DESIGN AND DOCUMENTATION HAS BEEN COMPLETED ON THE BASIS OF FF&E AND EQUIPMENT ADVISED TO THIS OFFICE AT THE TIME OF BRIEFING THE DESIGN. THE DESIGN PROVISIONS FOR FF&E AND EQUIPMENT INCORPORATES SPATIAL ALLOCATIONS, SERVICES, LOADING AND ACCESS CLEARANCES AND WHERE APPROPRIATE SERVICES REQUIREMENTS, HAVING DUE REGARD FOR SURROUNDING FIXTURES AND FITTINGS. IT SHOULD BE NOTED THAT SUBSTITUTE FF&E OR EQUIPMENT WITH ALTERNATE SPECIFICATIONS SHOULD NOT BE PROCURED PRIOR TO VALIDATING THOSE SPECIFICATIONS AGAINST THE ITEM CONTROL SCHEDULE AND DESIGN PROVISIONS IN THE MODEL. THIS OFFICE ACCEPTS NO RESPONSIBILITY FOR THE PROCUREMENT OF SUBSTITUTE FF&E AND EQUIPMENT WHICH HAS NOT BEEN REVIEWED AND VALIDATED AGAINST THE ORIGINAL DESIGN PROVISIONS.

**SERVICE POINTS DISCLAIMER**  
THE SERVICE POINTS IDENTIFIED ON THESE DRAWINGS HAVE BEEN OVERLAYED FROM THE BUILDING SERVICES ENGINEERING MODEL, AND ARE PROVIDED FOR INFORMATION AND SET-OUT PURPOSES ONLY. WE HAVE BEEN ADVISED BY THE SERVICES ENGINEERS THAT THE POINTS REPRESENTED ON THESE DRAWINGS ARE CORRECT AT THE TIME OF PUBLICATION. THIS OFFICE DOES NOT WARRANT THE ACCURACY OF THIS DATA. REFER TO THE BUILDING SERVICES ENGINEERING DOCUMENTATION FOR THE INSTALLATION OF THE SERVICES POINTS, AND THE INTERFACE BETWEEN THE SERVICES POINTS AND THE RESPECTIVE ENGINEERING SYSTEMS.

**ISSUED FOR INFORMATION**

ARCHITECTS

**STH**

**BATESSMART.**

ABN: 21 134 470 905  
LEVEL 4, 83 YORK STREET  
SYDNEY NSW 2000, AUSTRALIA  
PH: (02) 8299 4600 FAX: (03) 9885 2455

**M12147**  
43 BRISBANE STREET,  
SURREY HILLS, NSW 2010  
ABN: 68 094 740 996 PH: (02) 8354 5100  
E: syd@batesmart.com.au

THIS ARCHITECTURAL DESIGN IS THE COPYRIGHT OF SILVER THOMAS HANLEY AND BATES SMART AND SHALL NOT BE REPRODUCED WITHOUT THEIR WRITTEN PERMISSION

PROJECT MANAGER

**TSA**  
MANAGEMENT

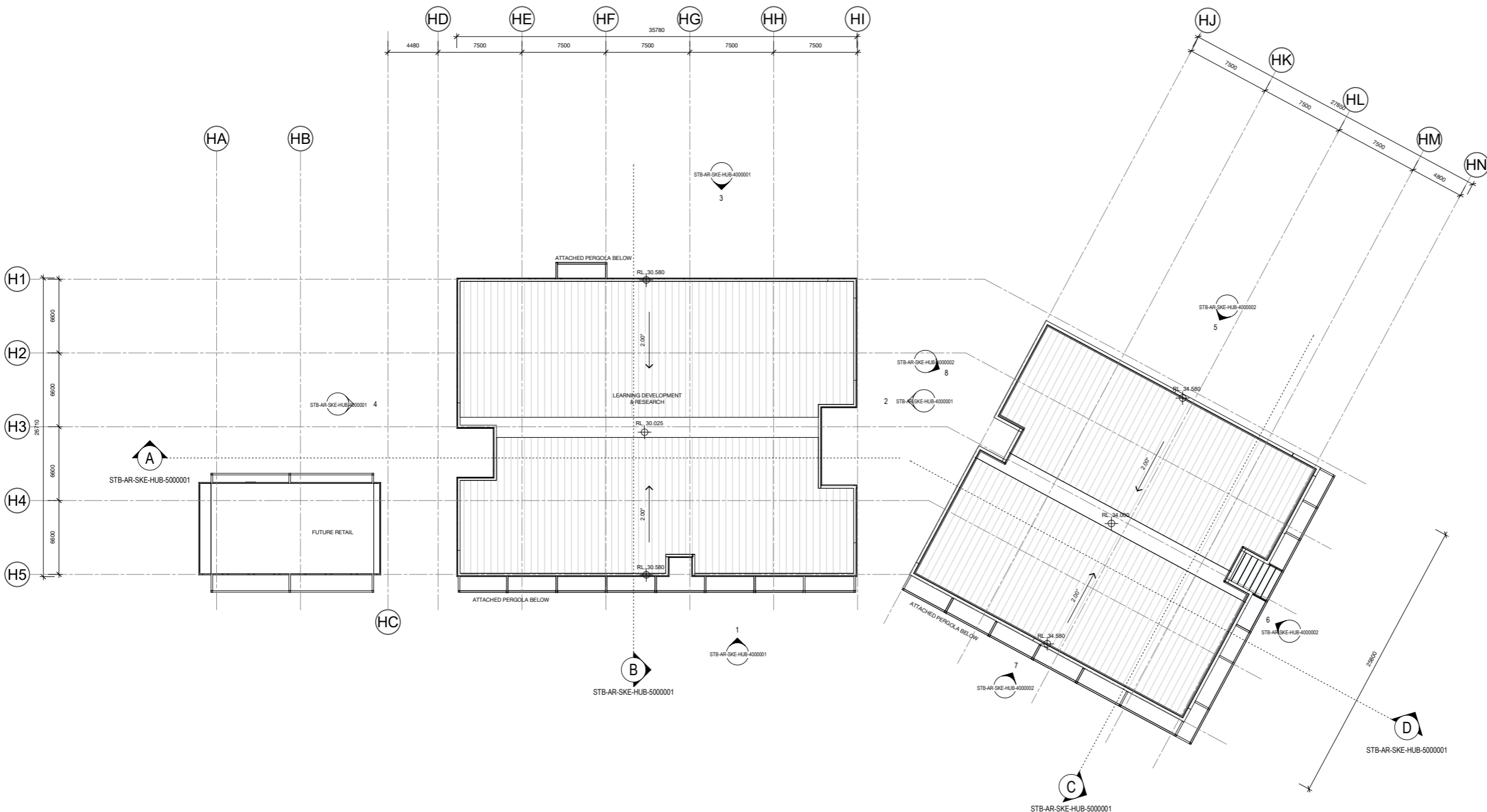
CLIENT

**Health**  
Infrastructure

**Health**  
Northern NSW  
Local Health District

**TWEED VALLEY HOSPITAL**

DRAWING TITLE			
HEALTH HUB FACADE SCOPING PLANS			
SCALE	DATE	DRAWN BY	CHECKED
1 : 200@A1	06/09/19	MC	BS
1 : 400@A3			
PROJECT No	DRAWING No	REVISION	
10363	STB-AR-SKE-HUB-2100001	1	



1 ROOF PLAN  
Plan 1 : 200

KEY PLAN

REV	DESCRIPTION	DRN	DATE
1	ISSUED FOR SSD 2	BM	06/09/19

ROOF FINISHES LEGEND

METAL DECK SHEET ON LIGHTWEIGHT STRUCTUTURE

METAL CLADDING ON LIGHTWEIGHT STRUCTUTURE

COPYRIGHT

ALL RIGHTS RESERVED. THIS WORK IS COPYRIGHT AND CANNOT BE REPRODUCED OR COPIED IN ANY FORM OR BY ANY MEANS (GRAPHIC, ELECTRONIC OR MECHANICAL INCLUDING PHOTOCOPYING) WITHOUT THE WRITTEN PERMISSION OF THE PRINCIPAL UNDER THE TERMS OF THE CONTRACT. ANY LICENCE, EXPRESS OR IMPLIED, TO USE THE DOCUMENT FOR ANY PURPOSE WHATSOEVER IS RESTRICTED TO THE TERMS OF THE AGREEMENT OR IMPLIED AGREEMENT WITH THE PRINCIPAL UNDER THE TERMS OF THE CONTRACT.

DIMENSIONS

USE FIGURED DIMENSIONS. DO NOT SCALE. CONTRACTORS MUST VERIFY ALL DIMENSIONS ON THE SITE BEFORE COMMENCING ANY WORK OR MAKING ANY SHOP DRAWING WHICH MUST BE SUBMITTED AND REVIEWED BEFORE MANUFACTURE.

FIXTURES, FITTINGS & EQUIPMENT SPECIFICATIONS

SUBSTITUTE FF&E EQUIPMENT SPECIFICATIONS  
THE FIT-OUT DESIGN AND DOCUMENTATION HAS BEEN COMPLETED ON THE BASIS OF FF&E AND EQUIPMENT ADVISED TO THIS OFFICE AT THE TIME OF BRIEFING THE DESIGN. THE DESIGN PROVISIONS FOR FF&E AND EQUIPMENT INCORPORATES SPATIAL ALLOCATIONS, SERVICING, LOADING AND ACCESS CLEARANCES AND WHERE APPROPRIATE SERVICES REQUIREMENTS, HAVING DUE REGARD FOR SURROUNDING FIXTURES AND FITTINGS. IT SHOULD BE NOTED THAT SUBSTITUTE FF&E OR EQUIPMENT WITH ALTERNATE SPECIFICATIONS SHOULD NOT BE PROCURED PRIOR TO VALIDATING THOSE SPECIFICATIONS AGAINST THE ITEM CONTROL SCHEDULE AND DESIGN PROVISIONS IN THE MODEL. THIS OFFICE ACCEPTS NO RESPONSIBILITY FOR THE PROCUREMENT OF SUBSTITUTE FF&E AND EQUIPMENT WHICH HAS NOT BEEN REVIEWED AND VALIDATED AGAINST THE ORIGINAL DESIGN PROVISIONS.

SERVICE POINTS DISCLAIMER

THE SERVICE POINTS IDENTIFIED ON THESE DRAWINGS HAVE BEEN OVERLAYED FROM THE BUILDING SERVICES ENGINEERING MODEL, AND ARE PROVIDED FOR INFORMATION AND SET-OUT PURPOSES ONLY. WE HAVE BEEN ADVISED BY THE SERVICES ENGINEERS THAT THE POINTS REPRESENTED ON THESE DRAWINGS ARE CORRECT AT THE TIME OF PUBLICATION. THIS OFFICE DOES NOT WARRANT THE ACCURACY OF THIS DATA. REFER TO THE BUILDING SERVICES ENGINEERING DOCUMENTATION FOR THE INSTALLATION OF THE SERVICES POINTS, AND THE INTERFACE BETWEEN THE SERVICES POINTS AND THE RESPECTIVE ENGINEERING SYSTEMS.

ISSUED FOR INFORMATION

ARCHITECTS

BATESSMART.

M12147

43 BRISBANE STREET,  
SURRY HILLS, NSW 2010  
ABN: 68 094 740 986 PH: (02) 8354 5100  
PH: (02) 8299 4600 FAX: (03) 9885 2455 E: syd@batesmart.com.au

THIS ARCHITECTURAL DESIGN IS THE COPYRIGHT OF SILVER THOMAS HANLEY AND BATES SMART AND SHALL NOT BE REPRODUCED WITHOUT THEIR WRITTEN PERMISSION

PROJECT MANAGER

MANAGEMENT

CLIENT

Health Infrastructure |

PROJECT

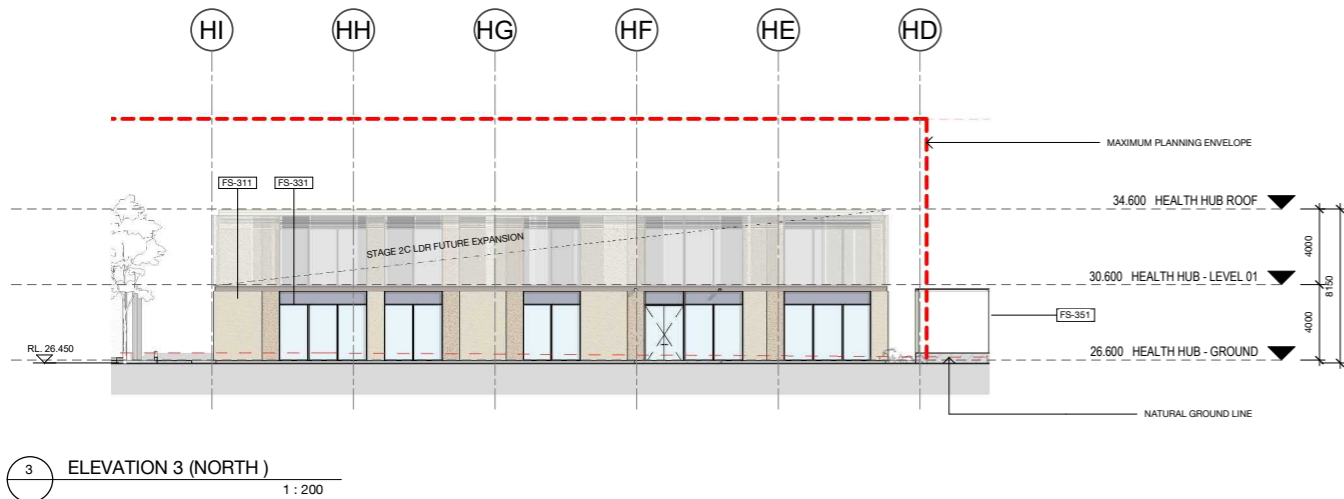
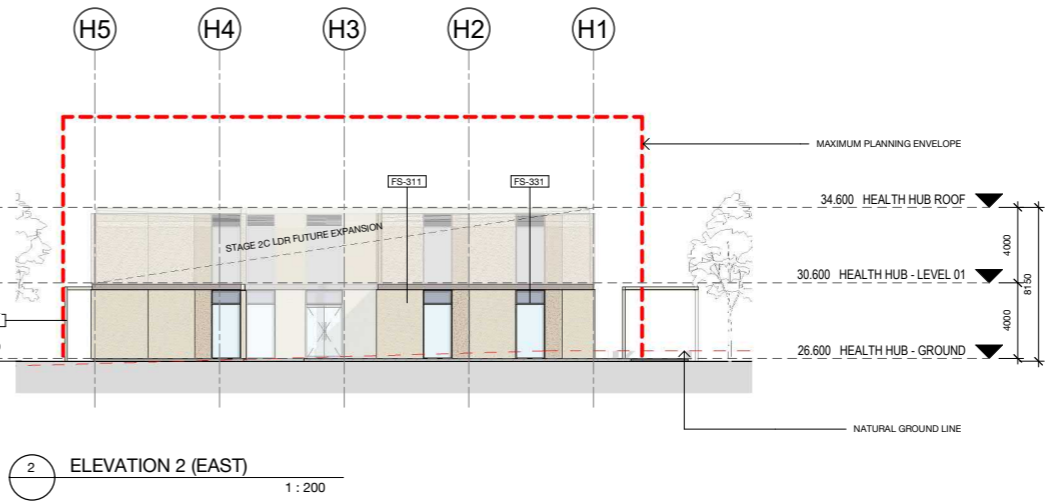
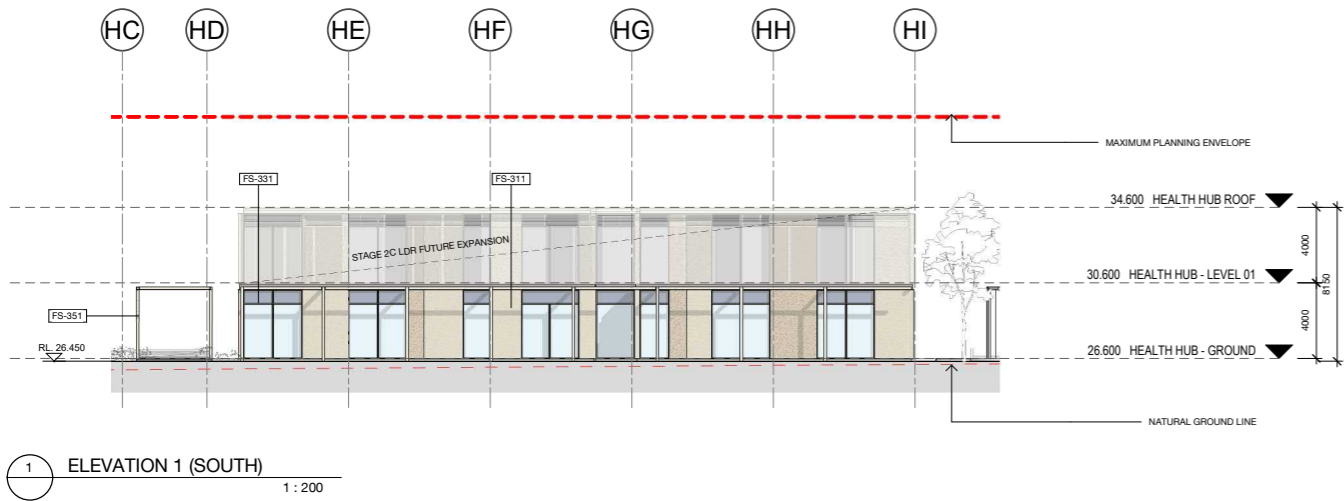
TWEED VALLEY HOSPITAL

DRAWING TITLE

HEALTH HUB  
ROOF PLAN

SCALE	DATE	DRAWN BY	CHECKED
1 : 200@A1	06/09/19	CH	BS
1 : 400@A3			

PROJECT No	DRAWING No	REVISION
10363	STB-AR-SKE-HUB-2500001	1



#### FACADE TYPE LEGEND

**FS-311** PRECAST CONCRETE PANEL, PIGMENTED, FINISH TBC

**FS-341** PLANT SCREEN LOUVRE SYSTEM FINISHES TBC

**FS-351** GROUND LEVEL CANOPIES TBC

**FS-331** SILL TO CEILING WINDOW WALL, HIGH PERFORMANCE VISION GLASS / ALUMINIUM SPANDREL PANELS MPC.

MPC = METALLIC POWDERCOAT, COLOUR TBC

REV	DESCRIPTION	DRN	DATE
1	ISSUED FOR SSD 2	BM	06/08/19

**COPYRIGHT**  
ALL RIGHTS RESERVED. THIS WORK IS COPYRIGHT AND CANNOT BE REPRODUCED OR COPIED IN ANY FORM OR BY ANY MEANS (GRAPHIC, ELECTRONIC OR MECHANICAL INCLUDING PHOTOCOPYING) WITHOUT THE WRITTEN PERMISSION OF THE PRINCIPAL UNDER THE TERMS OF THE CONTRACT. ANY LICENCE, EXPRESS OR IMPLIED, TO USE THE DOCUMENT FOR ANY PURPOSE WHATSOEVER IS RESTRICTED TO THE TERMS OF THE AGREEMENT OR IMPLIED AGREEMENT WITH THE PRINCIPAL UNDER THE TERMS OF THE CONTRACT.

**DIMENSIONS**  
**USE FIGURED DIMENSIONS, DO NOT SCALE. CONTRACTORS MUST VERIFY ALL DIMENSIONS ON THE SITE BEFORE COMMENCING ANY WORK OR MAKING ANY SHOP DRAWING WHICH MUST BE SUBMITTED AND REVIEWED BEFORE MANUFACTURE.**

**FIXTURES, FITTINGS & EQUIPMENT SPECIFICATIONS**  
SUBSTITUTE FF&E EQUIPMENT SPECIFICATIONS  
THE FIT-OUT DESIGN AND DOCUMENTATION HAS BEEN COMPLETED ON THE BASIS OF FF&E AND EQUIPMENT ADVISED TO THIS OFFICE AT THE TIME OF BRIEFING THE DESIGN. THE DESIGN PROVISIONS FOR FF&E AND EQUIPMENT INCORPORATES SPATIAL ALLOCATIONS, SERVICING, LOADING AND ACCESS CLEARANCES AND WHERE APPROPRIATE SERVICES REQUIREMENTS, HAVING DUE REGARD FOR SURROUNDING FIXTURES AND FITTINGS. IT SHOULD BE NOTED THAT SUBSTITUTE FF&E OR EQUIPMENT WITH ALTERNATE SPECIFICATIONS SHOULD NOT BE PROCURED PRIOR TO VALIDATING THOSE SPECIFICATIONS AGAINST THE ITEM CONTROL SCHEDULE AND DESIGN PROVISIONS IN THE MODEL. THIS OFFICE ACCEPTS NO RESPONSIBILITY FOR THE PROCUREMENT OF SUBSTITUTE FF&E AND EQUIPMENT WHICH HAS NOT BEEN REVIEWED AND VALIDATED AGAINST THE ORIGINAL DESIGN PROVISIONS.

**SERVICE POINTS DISCLAIMER**  
THE SERVICE POINTS IDENTIFIED ON THESE DRAWINGS HAVE BEEN OVERLAYED FROM THE BUILDING SERVICES ENGINEERING MODEL AND ARE PROVIDED FOR INFORMATION AND SET-OUT PURPOSES ONLY. WE HAVE BEEN ADVISED BY THE SERVICES ENGINEERS THAT THE POINTS REPRESENTED ON THESE DRAWINGS ARE CORRECT AT THE TIME OF PUBLICATION. THIS OFFICE DOES NOT WARRANT THE ACCURACY OF THIS DATA. REFER TO THE BUILDING SERVICES ENGINEERING DOCUMENTATION FOR THE INSTALLATION OF THE SERVICES POINTS, AND THE INTERFACE BETWEEN THE SERVICES POINTS AND THE RESPECTIVE ENGINEERING SYSTEMS.

#### ISSUED FOR INFORMATION

ARCHITECTS

**STH**

**BATESSMART.**

ABN: 21 134 478 965  
LEVEL 4, 88 YORK STREET  
SYDNEY NSW 2000, AUSTRALIA  
PH: (02) 8299 4600 FAX: (03) 9885 2455

**M12147**  
43 BRISBANE STREET,  
SURRY HILLS, NSW 2010  
ABN: 68 094 740 986 PH: (02) 8354 5100  
E: syd@batesmart.com.au

THIS ARCHITECTURAL DESIGN IS THE COPYRIGHT OF SILVER THOMAS HANLEY AND BATES SMART AND SHALL NOT BE REPRODUCED WITHOUT THEIR WRITTEN PERMISSION

PROJECT MANAGER

**TSA**  
MANAGEMENT

CLIENT

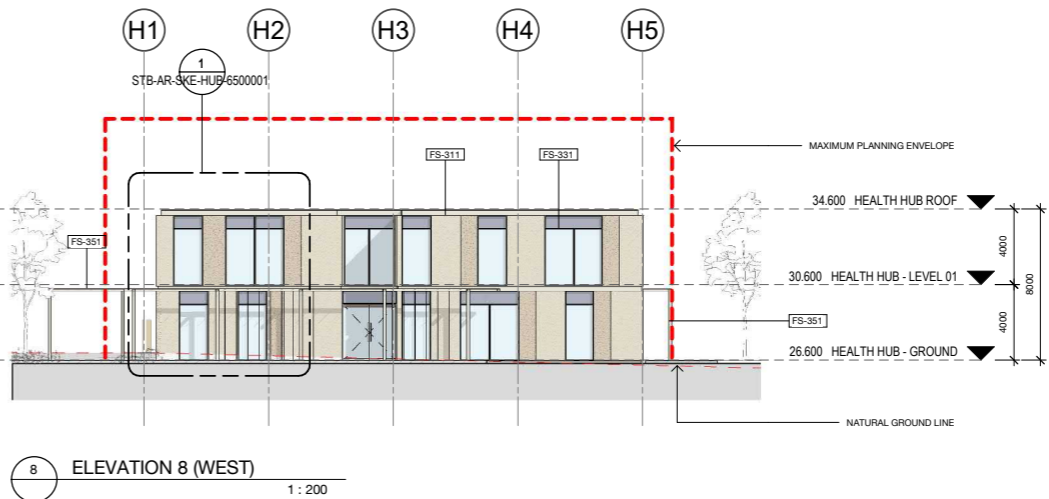
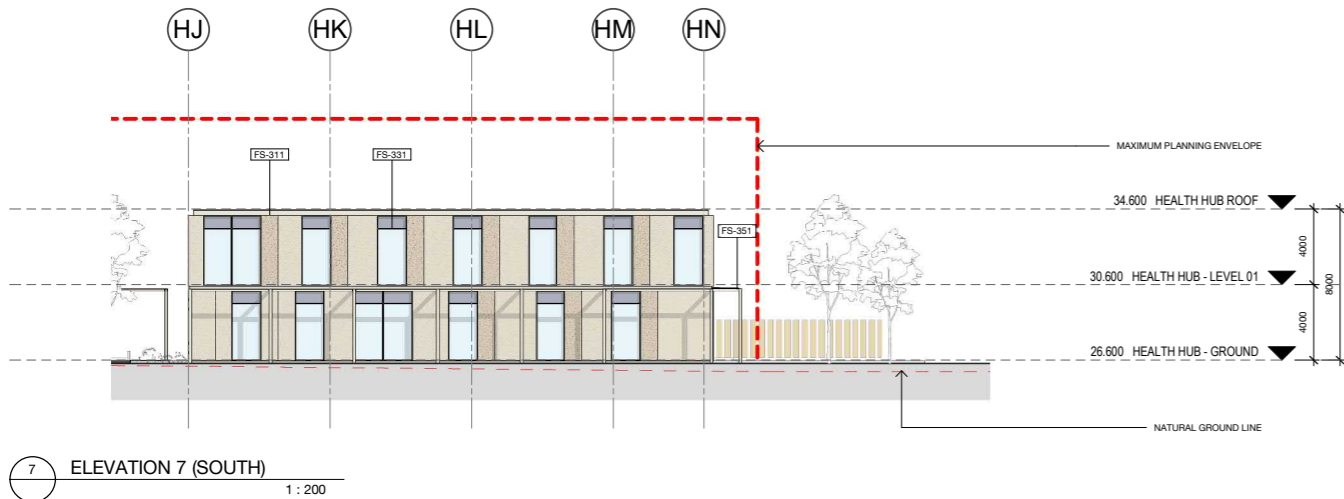
**Health**  
Infrastructure

**Health**  
Northern NSW  
Local Health District

#### TWEED VALLEY HOSPITAL

#### HEALTH HUB ELEVATIONS BUILDING A

SCALE	DATE	DRAWN BY	CHECKED
1 : 300@A1	08/07/2019	MC	BS
1 : 600@A3			
PROJECT No	DRAWING No	REVISION	
10363	STB-AR-SKE-HUB-4000001	1	



#### FACADE TYPE LEGEND

**FS-311** PRECAST CONCRETE PANEL, PIGMENTED, FINISH TBC

**FS-331** SILL TO CEILING WINDOW WALL, HIGH PERFORMANCE VISION GLASS / ALUMINIUM SPANDREL PANELS MPC.

MPC = METALLIC POWDERCOAT, COLOUR TBC

**FS-341** PLANT SCREEN LOUVRE SYSTEM FINISHES TBC

**FS-351** GROUND LEVEL CANOPIES TBC

REV	DESCRIPTION	DRN	DATE
1	ISSUED FOR SSD 2	BM	06/08/19

**COPYRIGHT**  
ALL RIGHTS RESERVED. THIS WORK IS COPYRIGHT AND CANNOT BE REPRODUCED OR COPIED IN ANY FORM OR BY ANY MEANS (GRAPHIC, ELECTRONIC OR MECHANICAL INCLUDING PHOTOCOPYING) WITHOUT THE WRITTEN PERMISSION OF THE PRINCIPAL UNDER THE TERMS OF THE CONTRACT. ANY LICENCE, EXPRESS OR IMPLIED, TO USE THE DOCUMENT FOR ANY PURPOSE WHATSOEVER IS RESTRICTED TO THE TERMS OF THE AGREEMENT OR IMPLIED AGREEMENT WITH THE PRINCIPAL UNDER THE TERMS OF THE CONTRACT.

**DIMENSIONS**  
**USE FIGURED DIMENSIONS, DO NOT SCALE. CONTRACTORS MUST VERIFY ALL DIMENSIONS ON THE SITE BEFORE COMMENCING ANY WORK OR MAKING ANY SHOP DRAWING WHICH MUST BE SUBMITTED AND REVIEWED BEFORE MANUFACTURE.**

**FIXTURES, FITTINGS & EQUIPMENT SPECIFICATIONS**  
SUBSTITUTE FF&E EQUIPMENT SPECIFICATIONS  
THE FIT-OUT DESIGN AND DOCUMENTATION HAS BEEN COMPLETED ON THE BASIS OF FF&E AND EQUIPMENT ADVISED TO THIS OFFICE AT THE TIME OF BRIEFING THE DESIGN. THE DESIGN PROVISIONS FOR FF&E AND EQUIPMENT INCORPORATES SPATIAL ALLOCATIONS, SERVICING, LOADING AND ACCESS CLEARANCES AND WHERE APPROPRIATE SERVICES REQUIREMENTS, HAVING DUE REGARD FOR SURROUNDING FIXTURES AND FITTINGS. IT SHOULD BE NOTED THAT SUBSTITUTE FF&E OR EQUIPMENT WITH ALTERNATE SPECIFICATIONS SHOULD NOT BE PROCURED PRIOR TO VALIDATING THOSE SPECIFICATIONS AGAINST THE ITEM CONTROL SCHEDULE AND DESIGN PROVISIONS IN THE MODEL. THIS OFFICE ACCEPTS NO RESPONSIBILITY FOR THE PROCUREMENT OF SUBSTITUTE FF&E AND EQUIPMENT WHICH HAS NOT BEEN REVIEWED AND VALIDATED AGAINST THE ORIGINAL DESIGN PROVISIONS.

**SERVICE POINTS DISCLAIMER**  
THE SERVICE POINTS IDENTIFIED ON THESE DRAWINGS HAVE BEEN OVERLAYED FROM THE BUILDING SERVICES ENGINEERING MODEL, AND ARE PROVIDED FOR INFORMATION AND SET-OUT PURPOSES ONLY. WE HAVE BEEN ADVISED BY THE SERVICES ENGINEERS THAT THE POINTS REPRESENTED ON THESE DRAWINGS ARE CORRECT AT THE TIME OF PUBLICATION. THIS OFFICE DOES NOT WARRANT THE ACCURACY OF THIS DATA. REFER TO THE BUILDING SERVICES ENGINEERING DOCUMENTATION FOR THE INSTALLATION OF THE SERVICES POINTS, AND THE INTERFACE BETWEEN THE SERVICES POINTS AND THE RESPECTIVE ENGINEERING SYSTEMS.

#### ISSUED FOR INFORMATION

ARCHITECTS

**STH BATESSMART.**

ABN: 21 134 470 965  
LEVEL 4, 89 YORK STREET  
SYDNEY NSW 2000, AUSTRALIA  
PH: (02) 8299 4600 FAX: (03) 9885 2455

**M12147**  
43 BRISBANE STREET,  
SURRY HILLS, NSW 2010  
ABN: 68 094 740 986 PH: (02) 8354 5100  
E: syd@batesmart.com.au

THIS ARCHITECTURAL DESIGN IS THE COPYRIGHT OF SILVER THOMAS HANLEY AND BATES SMART AND SHALL NOT BE REPRODUCED WITHOUT THEIR WRITTEN PERMISSION

PROJECT MANAGER

**TSA**  
MANAGEMENT

CLIENT

**NSW GOVERNMENT** **Health Infrastructure** **Health Northern NSW Local Health District**

PROJECT

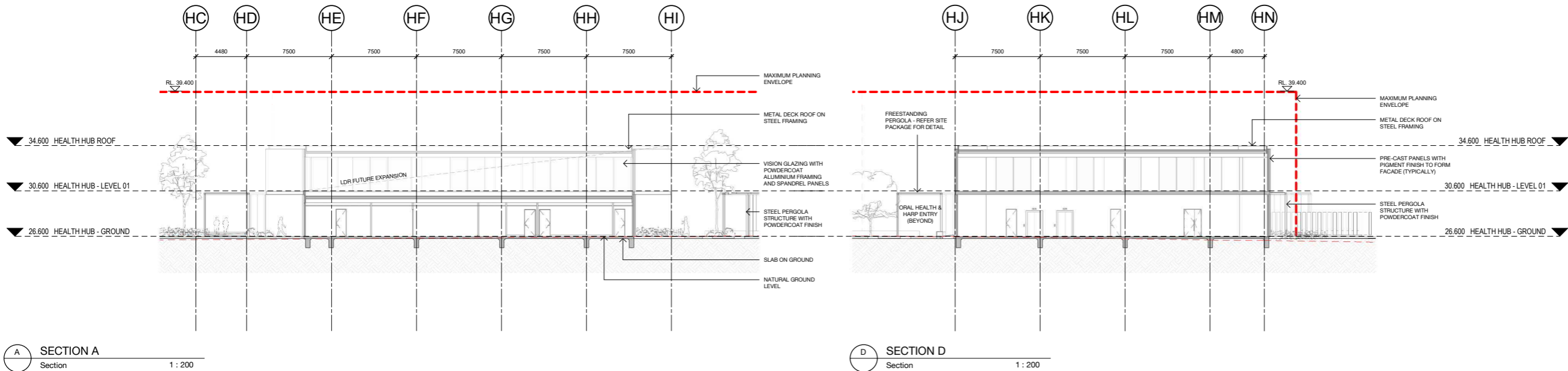
**TWEED VALLEY HOSPITAL**

DRAWING TITLE

**HEALTH HUB ELEVATIONS BUILDING B**

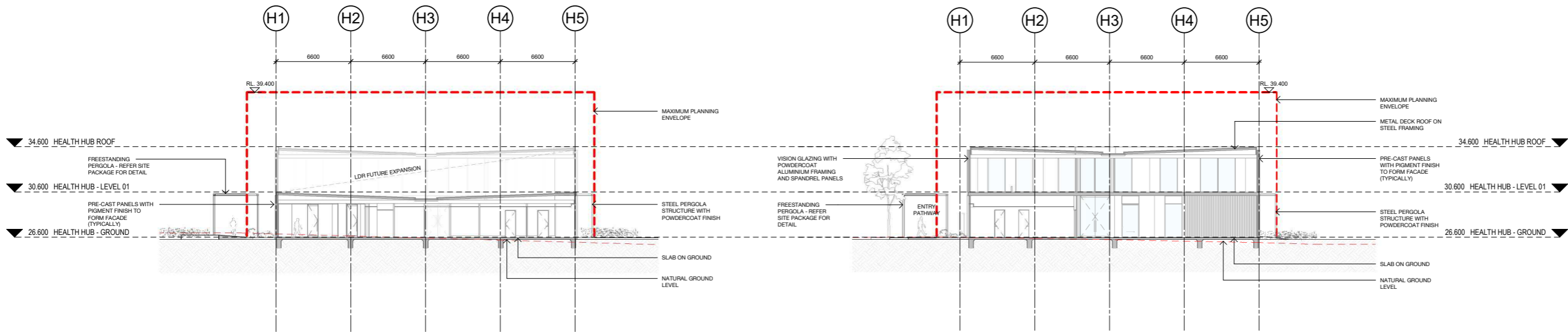
SCALE 1:300@A1 08/07/2019 MC BS

PROJECT No 10363 DRAWING No STB-AR-SKE-HUB-4000002 REVISION 1



A SECTION A  
Section 1 : 200

D SECTION D  
Section 1 : 200



B SECTION B  
Section 1 : 200

C SECTION C  
Section 1 : 200

KEY PLAN			
REV	DESCRIPTION	DRN	DATE
1	ISSUED FOR SSD 2	BM	06/08/19

**COPYRIGHT**  
ALL RIGHTS RESERVED. THIS WORK IS COPYRIGHT AND CANNOT BE REPRODUCED OR COPIED IN ANY FORM OR BY ANY MEANS (GRAPHIC, ELECTRONIC OR MECHANICAL INCLUDING PHOTOCOPYING) WITHOUT THE WRITTEN PERMISSION OF THE PRINCIPAL UNDER THE TERMS OF THE CONTRACT. ANY LICENCE, EXPRESS OR IMPLIED, TO USE THE DOCUMENT FOR ANY PURPOSE WHATSOEVER IS RESTRICTED TO THE TERMS OF THE AGREEMENT OR IMPLIED AGREEMENT WITH THE PRINCIPAL UNDER THE TERMS OF THE CONTRACT.

**DIMENSIONS**  
**USE FIGURED DIMENSIONS. DO NOT SCALE. CONTRACTORS MUST VERIFY ALL DIMENSIONS ON THE SITE BEFORE COMMENCING ANY WORK OR MAKING ANY SHOP DRAWING WHICH MUST BE SUBMITTED AND REVIEWED BEFORE MANUFACTURE.**

**FIXTURES, FITTINGS & EQUIPMENT SPECIFICATIONS**  
SUBSTITUTE FF&E EQUIPMENT SPECIFICATIONS  
THE FIT-OUT DESIGN AND DOCUMENTATION HAS BEEN COMPLETED ON THE BASIS OF FF&E AND EQUIPMENT ADVISED TO THIS OFFICE AT THE TIME OF BRIEFING THE DESIGN. THE DESIGN PROVISIONS FOR FF&E AND EQUIPMENT INCORPORATES SPATIAL ALLOCATIONS, SERVICING, LOADING AND ACCESS CLEARANCES AND WHERE APPROPRIATE SERVICES REQUIREMENTS, HAVING DUE REGARD FOR SURROUNDING FIXTURES AND FITTINGS. IT SHOULD BE NOTED THAT SUBSTITUTE FF&E OR EQUIPMENT WITH ALTERNATE SPECIFICATIONS SHOULD NOT BE PROCURED PRIOR TO VALIDATING THOSE SPECIFICATIONS AGAINST THE ITEM CONTROL SCHEDULE AND DESIGN PROVISIONS IN THE MODEL. THIS OFFICE ACCEPTS NO RESPONSIBILITY FOR THE PROCUREMENT OF SUBSTITUTE FF&E AND EQUIPMENT WHICH HAS NOT BEEN REVIEWED AND VALIDATED AGAINST THE ORIGINAL DESIGN PROVISIONS.

**SERVICE POINTS DISCLAIMER**  
THE SERVICE POINTS IDENTIFIED ON THESE DRAWINGS HAVE BEEN OVERLAYED FROM THE BUILDING SERVICES ENGINEERING MODEL AND ARE PROVIDED FOR INFORMATION AND SET-OUT PURPOSES ONLY. WE HAVE BEEN ADVISED BY THE SERVICES ENGINEERS THAT THE POINTS REPRESENTED ON THESE DRAWINGS ARE CORRECT AT THE TIME OF PUBLICATION. THIS OFFICE DOES NOT WARRANT THE ACCURACY OF THIS DATA. REFER TO THE BUILDING SERVICES ENGINEERING DOCUMENTATION FOR THE INSTALLATION OF THE SERVICES POINTS, AND THE INTERFACE BETWEEN THE SERVICES POINTS AND THE RESPECTIVE ENGINEERING SYSTEMS.

**ISSUED FOR INFORMATION**

ARCHITECTS

**STH**

**BATESSMART.**

ABN: 21 134 476 965  
LEVEL 4, 88 YORK STREET  
SYDNEY NSW 2000, AUSTRALIA  
PH: (02) 8299 4600 FAX: (03) 9885 2455

**M12147**  
43 BRISBANE STREET,  
SUNSHY HILLS, NSW 2010  
ABN: 68 094 740 986 PH: (02) 8354 5100  
E: syd@batesmart.com.au

THIS ARCHITECTURAL DESIGN IS THE COPYRIGHT OF SILVER THOMAS HANLEY AND BATES SMART AND SHALL NOT BE REPRODUCED WITHOUT THEIR WRITTEN PERMISSION

PROJECT MANAGER

**TSA**  
MANAGEMENT

CLIENT

**NSW**  
GOVERNMENT

**Health**  
Infrastructure

**Health**  
Northern NSW  
Local Health District

PROJECT

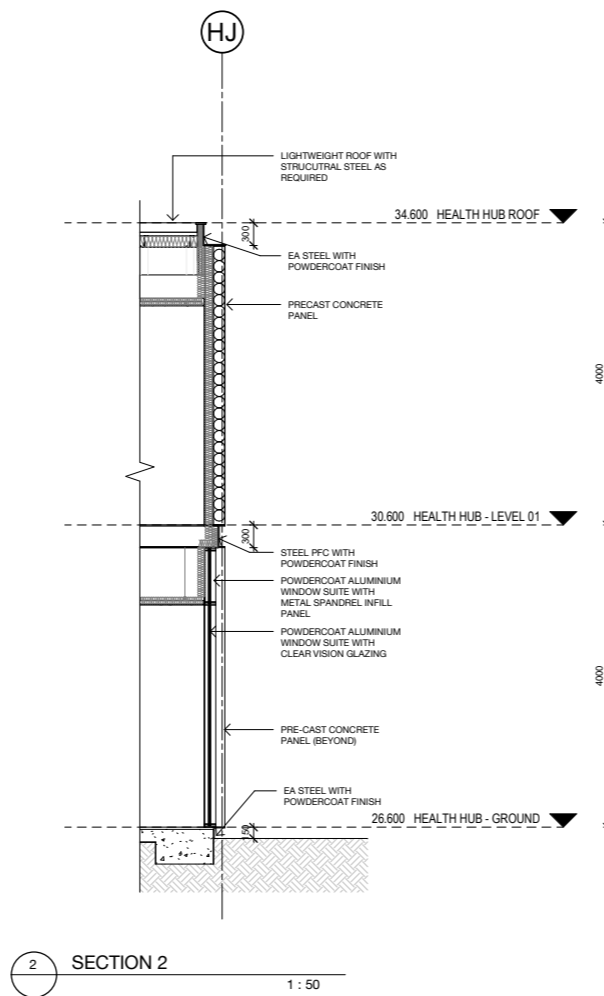
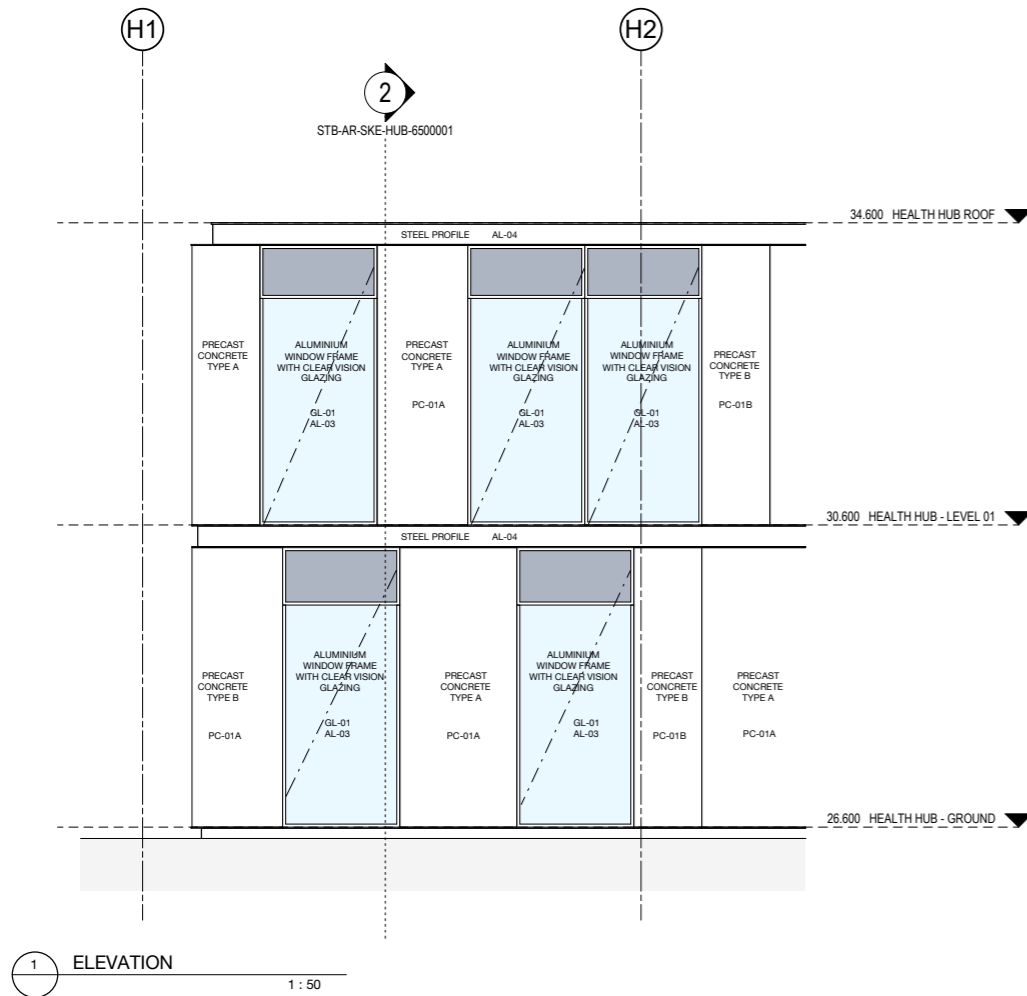
**TWEED VALLEY HOSPITAL**

DRAWING TITLE

**HEALTH HUB  
SECTIONS  
A, B, C & D**

SCALE 1 : 200@A1 DATE 23/08/19 DRAWN BY CH CHECKED HJ

PROJECT No 10363 DRAWING No STB-AR-SKE-HUB-5000001 REVISION 1



KEY PLAN

REV	DESCRIPTION	DRN	DATE
1	ISSUED FOR SSD 2	BM	08/08/19

**COPYRIGHT**  
ALL RIGHTS RESERVED. THIS WORK IS COPYRIGHT AND CANNOT BE REPRODUCED OR COPIED IN ANY FORM OR BY ANY MEANS (GRAPHIC, ELECTRONIC OR MECHANICAL INCLUDING PHOTOCOPYING) WITHOUT THE WRITTEN PERMISSION OF THE PRINCIPAL UNDER THE TERMS OF THE CONTRACT. ANY LICENCE, EXPRESS OR IMPLIED, TO USE THE DOCUMENT FOR ANY PURPOSE WHATSOEVER IS RESTRICTED TO THE TERMS OF THE AGREEMENT OR IMPLIED AGREEMENT WITH THE PRINCIPAL UNDER THE TERMS OF THE CONTRACT.

**DIMENSIONS**  
**USE FIGURED DIMENSIONS, DO NOT SCALE. CONTRACTORS MUST VERIFY ALL DIMENSIONS ON THE SITE BEFORE COMMENCING ANY WORK OR MAKING ANY SHOP DRAWING WHICH MUST BE SUBMITTED AND REVIEWED BEFORE MANUFACTURE.**

**FIXTURES, FITTINGS & EQUIPMENT SPECIFICATIONS**  
SUBSTITUTE FF&E EQUIPMENT SPECIFICATIONS  
THE FIT-OUT DESIGN AND DOCUMENTATION HAS BEEN COMPLETED ON THE BASIS OF FF&E AND EQUIPMENT ADVISED TO THIS OFFICE AT THE TIME OF BRIEFING THE DESIGN. THE DESIGN PROVISIONS FOR FF&E AND EQUIPMENT INCORPORATES SPATIAL ALLOCATIONS, SERVICES, LOADING AND ACCESS CLEARANCES AND WHERE APPROPRIATE SERVICES REQUIREMENTS, HAVING DUE REGARD FOR SURROUNDING FIXTURES AND FITTINGS. IT SHOULD BE NOTED THAT SUBSTITUTE FF&E OR EQUIPMENT WITH ALTERNATE SPECIFICATIONS SHOULD NOT BE PROCURED PRIOR TO VALIDATING THOSE SPECIFICATIONS AGAINST THE ITEM CONTROL SCHEDULE AND DESIGN PROVISIONS IN THE MODEL. THIS OFFICE ACCEPTS NO RESPONSIBILITY FOR THE PROCUREMENT OF SUBSTITUTE FF&E AND EQUIPMENT WHICH HAS NOT BEEN REVIEWED AND VALIDATED AGAINST THE ORIGINAL DESIGN PROVISIONS.

**SERVICE POINTS DISCLAIMER**  
THE SERVICE POINTS IDENTIFIED ON THESE DRAWINGS HAVE BEEN OVERLAYED FROM THE BUILDING SERVICES ENGINEERING MODEL, AND ARE PROVIDED FOR INFORMATION AND SET-OUT PURPOSES ONLY. WE HAVE BEEN ADVISED BY THE SERVICES ENGINEERS THAT THE POINTS REPRESENTED ON THESE DRAWINGS ARE CORRECT AT THE TIME OF PUBLICATION. THIS OFFICE DOES NOT WARRANT THE ACCURACY OF THIS DATA. REFER TO THE BUILDING SERVICES ENGINEERING DOCUMENTATION FOR THE INSTALLATION OF THE SERVICES POINTS, AND THE INTERFACE BETWEEN THE SERVICES POINTS AND THE RESPECTIVE ENGINEERING SYSTEMS.

**ISSUED FOR INFORMATION**

ARCHITECTS

**STH BATESSMART.**

M12147  
43 BRISBANE STREET,  
SURREY HILLS, NSW 2010  
ABN: 68 094 740 986 PH: (02) 8354 5100  
E: syd@batesmart.com.au

ABN: 21 134 476 005  
LEVEL 4, 80 YORK STREET  
SYDNEY NSW 2000, AUSTRALIA  
PH: (02) 8299 4600 FAX: (03) 9885 2455

THIS ARCHITECTURAL DESIGN IS THE COPYRIGHT OF SILVER THOMAS HANLEY AND BATES SMART AND SHALL NOT BE REPRODUCED WITHOUT THEIR WRITTEN PERMISSION

PROJECT MANAGER

**TSA**  
MANAGEMENT

CLIENT

**NSW** GOVERNMENT  
**Health** Infrastructure  
**Health** Northern NSW Local Health District

PROJECT

**TWEED VALLEY HOSPITAL**

DRAWING TITLE

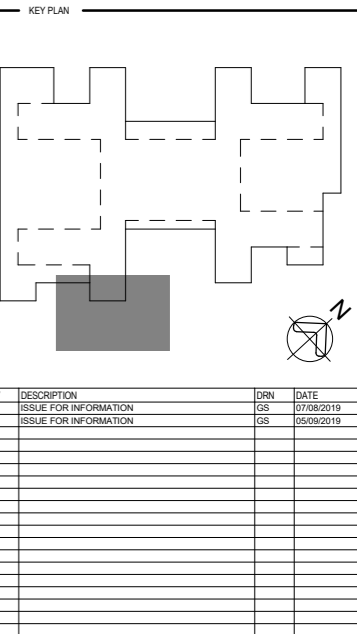
**HEALTH HUB  
FACADE TYPES  
FS-312**

SCALE	DATE	DRAWN BY	CHECKED
1 : 50@A1	08/08/19	HJ	BS

PROJECT No	DRAWING No	REVISION
10363	STB-AR-SKE-HUB-6500001	1







ALL RIGHTS RESERVED. THIS WORK IS COPYRIGHT AND CANNOT BE REPRODUCED OR COPIED IN ANY FORM OR BY ANY MEANS (GRAPHIC, ELECTRONIC OR MECHANICAL, INCLUDING PHOTOCOPIING) WITHOUT THE WRITTEN PERMISSION OF THE PRINCIPAL UNDER THE TERMS OF THE CONTRACT. ANY LICENCE, EXPRESS OR IMPLIED, TO USE THE DOCUMENT FOR ANY PURPOSE WHATSOEVER IS RESTRICTED TO THE TERMS OF THE AGREEMENT OR IMPLIED AGREEMENT WITH THE PRINCIPAL UNDER THE TERMS OF THE CONTRACT.

**USE FIGURED DIMENSIONS, DO NOT SCALE. CONTRACTORS MUST VERIFY ALL DIMENSIONS ON THE SITE BEFORE COMMENCING ANY WORK OR MAKING ANY SHOP DRAWING WHICH MUST BE SUBMITTED AND REVIEWED BEFORE MANUFACTURE.**

SUBSTITUTE FF&E EQUIPMENT SPECIFICATIONS

THE FIT-OUT DESIGN AND DOCUMENTATION HAS BEEN COMPLETED ON THE BASIS OF FF&E AND EQUIPMENT ADVISED TO THIS OFFICE AT THE TIME OF BRIEFING THE DESIGN. THE DESIGN PROVISIONS FOR FF&E AND EQUIPMENT INCORPORATES SPATIAL ALIGNMENTS, SERVING, LIGHTING, AND ACCESS CONDITIONS. THE DESIGN PROVIDES APPROPRIATE PROVISIONS FOR ACCESSORIES, HAVING REGARD FOR SURROUNDING CONDITIONS AND FITTINGS. IT SHOULD BE NOTED THAT SUBSTITUTE FF&E OR EQUIPMENT WITH ALTERNATE SPECIFICATIONS SHOULD NOT BE PROCURED PRIOR TO VALIDATING THOSE SPECIFICATIONS AGAINST THE ITEM CONTROL SCHEDULE AND DESIGN. THE DESIGN PROVIDES THE MOST APPROPRIATE ACCESS CONDITIONS FOR THE PROCUREMENT OF SUBSTITUTE FF&E AND EQUIPMENT WHICH HAS NOT BEEN REVIEWED AND VALIDATED AGAINST THE ORIGINAL DESIGN PROVISIONS.

THE SERVICE POINTS IDENTIFIED ON THESE DRAWINGS HAVE BEEN OVERLAYED FROM THE BUILDING SERVICES ENGINEERING MODEL, AND ARE PROVIDED FOR INFORMATION AND SET-OUT PURPOSES ONLY. WE HAVE BEEN ADVISED BY THE SERVICES ENGINEERS THAT THE POINTS REPRESENTED ON THESE DRAWINGS ARE CORRECT AT THE TIME OF PUBLICATION. THIS OFFICE DOES NOT WARRANT THE ACCURACY OF THIS DATA. REFER TO THE BUILDING SERVICES ENGINEERING DOCUMENTATION FOR THE INSTALLATION OF THE SERVICES POINTS, AND THE INTERFACE BETWEEN THE SERVICES POINTS AND THE RESPECTIVE ENGINEERING SYSTEMS.

## ARCHITECTS



THIS ARCHITECTURAL DESIGN IS THE COPYRIGHT OF SILVER THOMAS HANLEY AND BATES SMART AND SHALL NOT BE REPRODUCED WITHOUT THEIR WRITTEN PERMISSION

PROJECT MANAGER

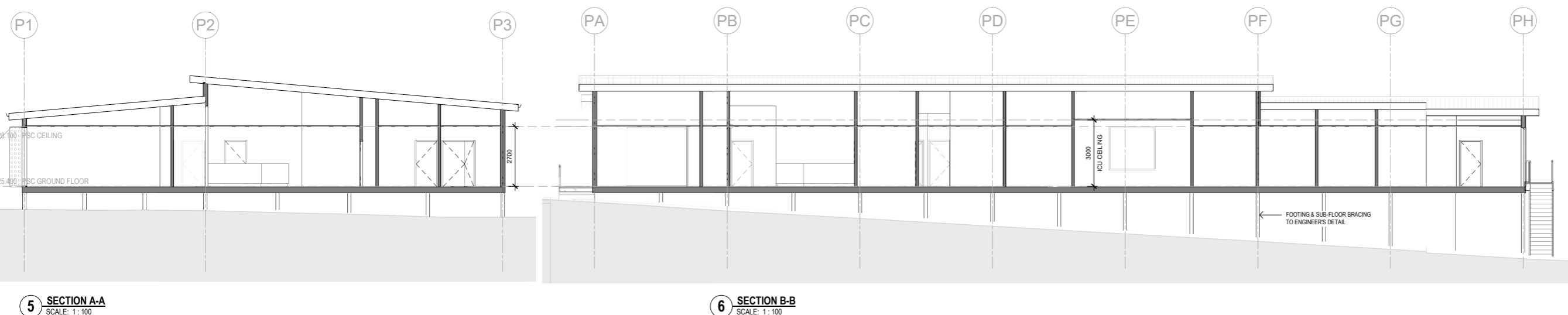
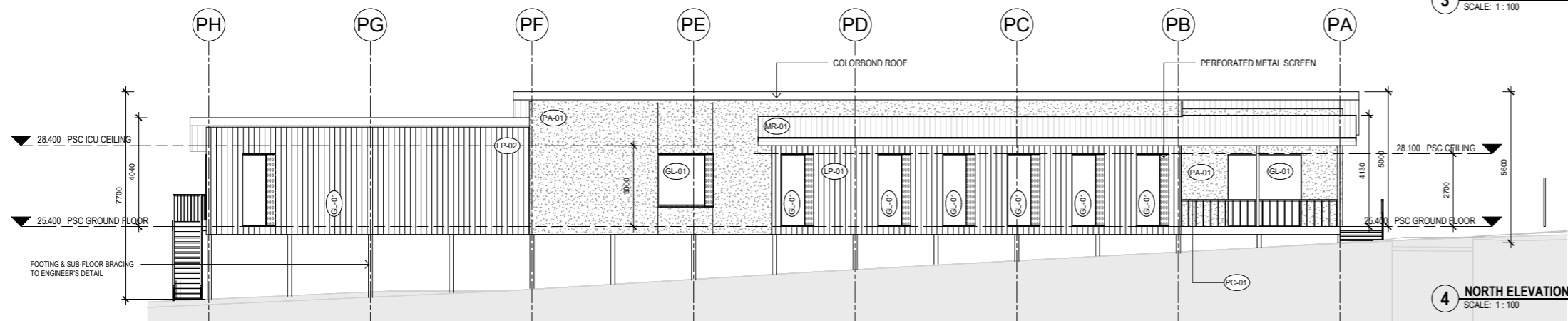
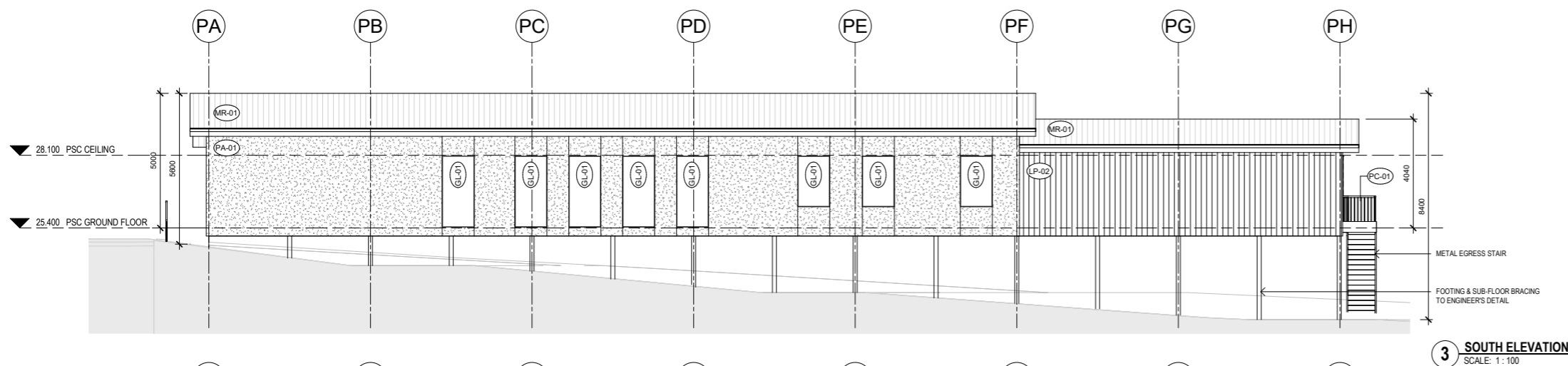
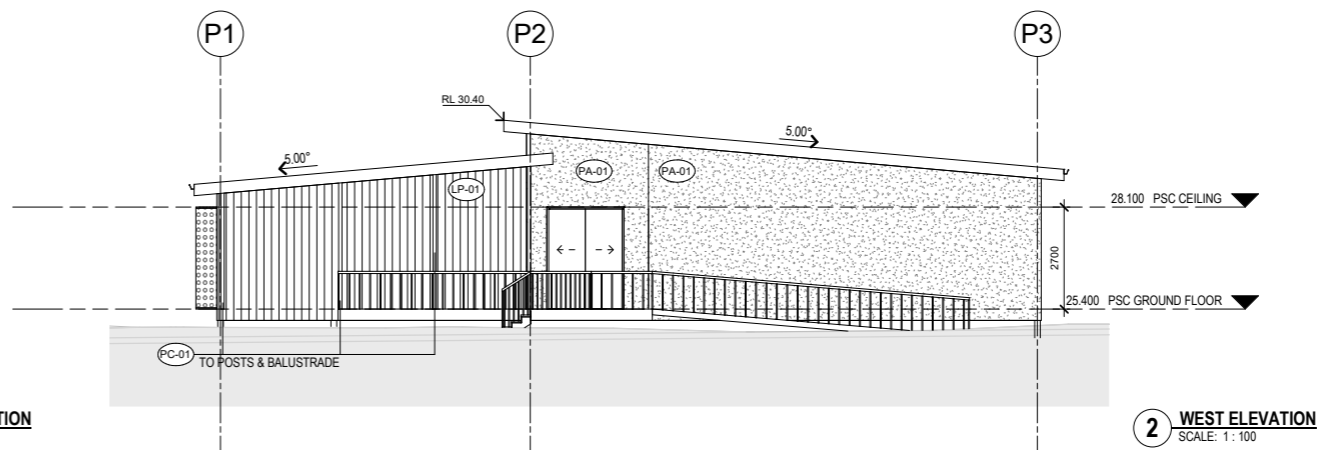
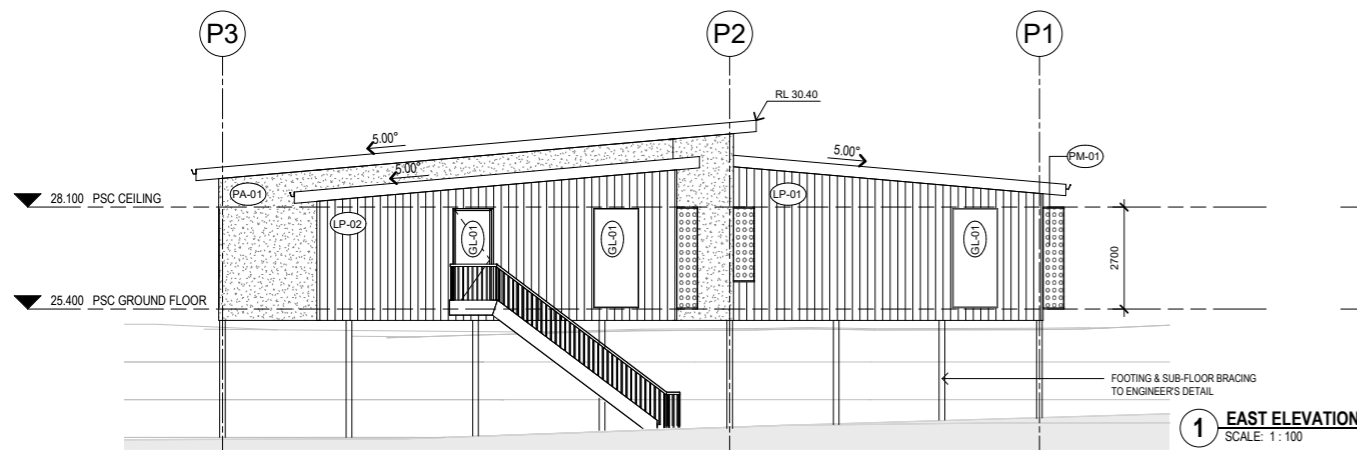


## DRAWING TITLE

SCALE: 1:100@A1      DATE: 05/09/2019      DRAWN BY: GS      CHECKED: AB

PROJECT No. \_\_\_\_\_ DRAWING No. \_\_\_\_\_ REVISION \_\_\_\_\_

10363.00 STB-AR-DWG-PSC- 2201001



REV	DESCRIPTION	DRN	DATE
1	ISSUE FOR INFORMATION	GS	06/08/2019
2	ISSUE FOR INFORMATION	GS	07/08/2019
3	ISSUE FOR INFORMATION	GS	05/09/2019

COPYRIGHT

ALL RIGHTS RESERVED. THIS WORK IS COPYRIGHT AND CANNOT BE REPRODUCED OR COPIED IN ANY FORM OR BY ANY MEANS (GRAPHIC, ELECTRONIC OR MECHANICAL, INCLUDING PHOTOCOPIING) WITHOUT THE WRITTEN PERMISSION OF THE PRINCIPAL UNDER THE TERMS OF THE CONTRACT. ANY LICENCE, EXPRESS OR IMPLIED, TO USE THE DOCUMENT FOR ANY PURPOSE WHATSOEVER IS RESTRICTED TO THE TERMS OF THE AGREEMENT OR IMPLIED AGREEMENT WITH THE PRINCIPAL UNDER THE TERMS OF THE CONTRACT.

## DIMENSIONS

**USE FIGURED DIMENSIONS, DO NOT SCALE. CONTRACTORS MUST VERIFY ALL DIMENSIONS ON THE SITE BEFORE COMMENCING ANY WORK OR MAKING ANY SHOP DRAWING WHICH MUST BE SUBMITTED AND REVIEWED BEFORE MANUFACTURE**

## FIXTURES, FITTINGS & EQUIPMENT SPECIFICATIONS

**SUBSTITUTE FFBE EQUIPMENT SPECIFICATIONS**

THE FIT-OUT DESIGN AND DOCUMENTATION HAS BEEN COMPLETED ON THE BASIS OF THE EQUIPMENT SPECIFICATIONS SET OUT AT THE TIME OF BREASTING THE DESIGN. THE DESIGN PROVISIONS FOR FFBE AND EQUIPMENT INCORPORATES SPATIAL ALLOCATIONS, SERVICES, LOADING AND ACCESS CLEARANCES AND WHERE APPROPRIATE SERVICES, REQUIREMENTS, HAVING DUE REGARD FOR SURROUNDING BUILDINGS AND FITTING THE EQUIPMENT INTO THE BUILDING. EQUIPMENT WITH ALTERNATE SPECIFICATIONS SHOULD NOT BE PROCURED PRIOR TO VALIDATING THOSE SPECIFICATIONS AGAINST THE ITEM CONTROL, SCHEDULE AND DESIGN PROVISIONS IN THE MODEL. THIS OFFICE ACCEPTS NO RESPONSIBILITY FOR THE OBTAINMENT OF SUPPLIERS OF FFBE AND EQUIPMENT. THE MODEL HAS BEEN REVIEWED AND VALIDATED AGAINST THE ORIGINAL DESIGN PROVISIONS.

**SERVICE POINTS DISCLAIMER**

**SERVICE POINT'S DISCLAIMER**

THE SERVICE POINTS IDENTIFIED ON THESE DRAWINGS HAVE BEEN OBTAINED FROM THE BUILDING SERVICES ENGINEERING MODEL, AND ARE PROVIDED FOR INFORMATION AND SET-OUT PURPOSES ONLY. WE HAVE BEEN ADVISED BY THE SERVICES ENGINEERS THAT THE POINTS REPRESENTED ON THESE DRAWINGS ARE CORRECT AT THE TIME OF PUBLICATION. THIS OFFICE DOES NOT WARRANT THE ACCURACY OF THIS DATA. REFER TO THE BUILDING SERVICES ENGINEERING DOCUMENTATION FOR THE INSTALLATION OF THE SERVICE POINTS, AND THE INTERFACE BETWEEN THE SERVICE POINTS AND THE RESPECTIVE ENGINEERING SYSTEMS.

ISSUED FOR INFORMATION

ARCHITECTS



ABN: 21 134 476 065  
LEVEL 4, 89 YORK STREET  
SYDNEY NSW 2000, AUSTRALIA  
PH: (02) 8299 4600 FAX: (03) 9885 2455

43 BRISBANE STREET,  
SURREY HILLS, NSW 2010  
ABN: 68 094 740 986 PH: (02) 8354 5100  
E: [syd@batesmart.com.au](mailto:syd@batesmart.com.au)

43 BRISBANE STREET,  
SURRY HILLS, NSW 2010  
ABN: 68 094 740 986 PH: (02) 8354 5100  
E: [syd@batessmart.com.au](mailto:syd@batessmart.com.au)

THIS ARCHITECTURAL DESIGN IS THE COPYRIGHT OF SILVER THOMAS HANLEY AND BATES SMART AND SHALL NOT BE REPRODUCED WITHOUT THEIR WRITTEN PERMISSION

— PROJECT MANAGER



— CLIENT



PROJECT

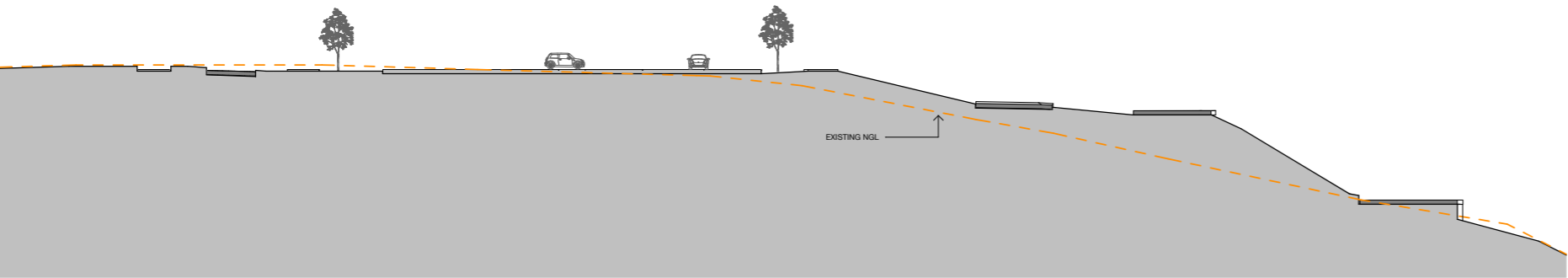
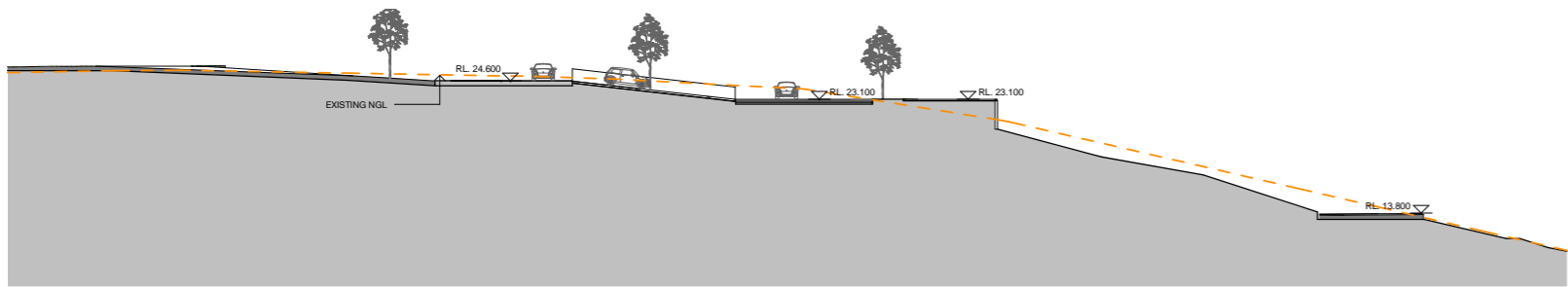
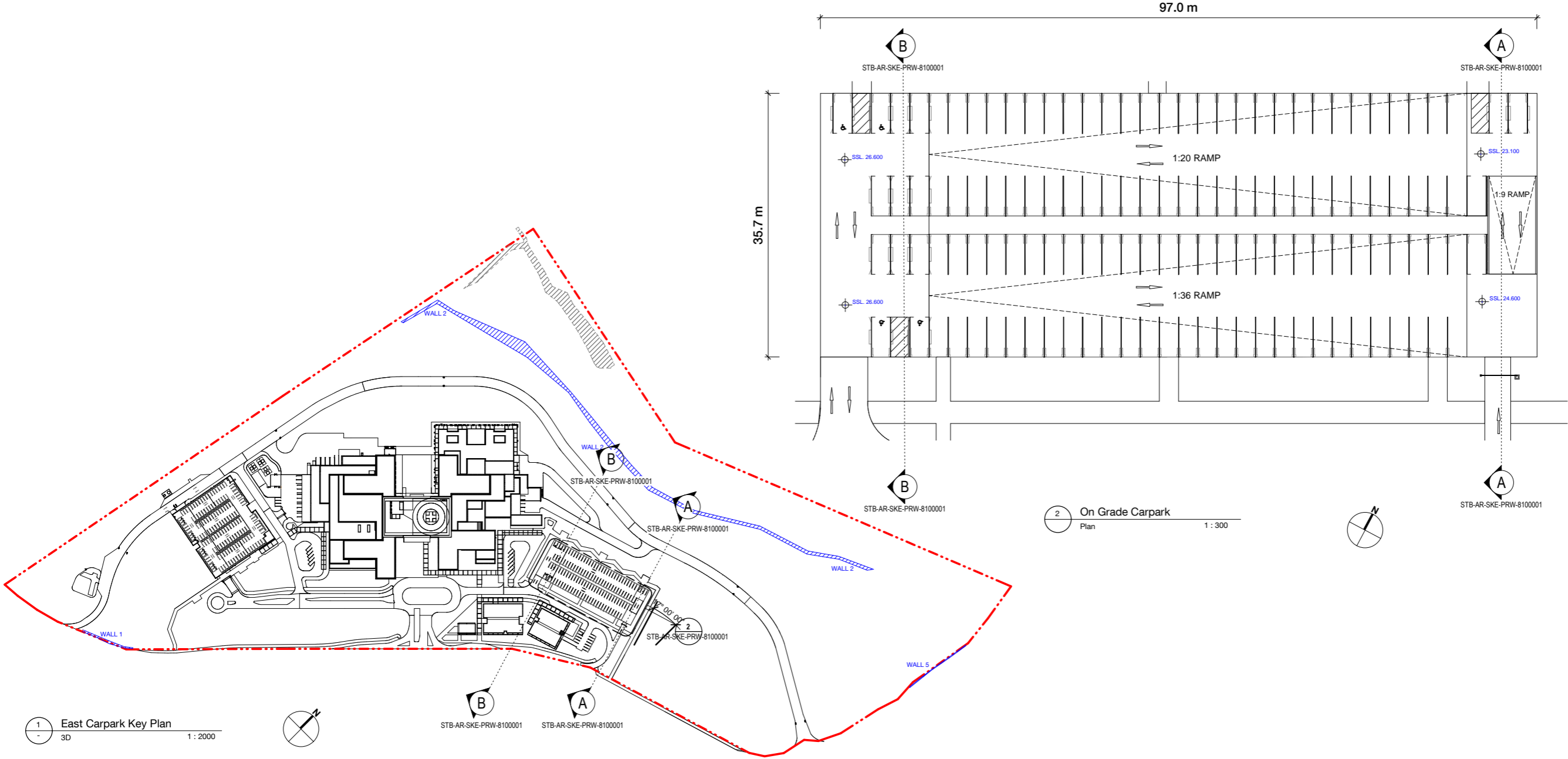
**TWEED VALLEY HOSPITAL**

— DRAWING TITLE

## PROTOTYPE SKILLS CENTRE ELEVATIONS & SECTIONS

SCALE DATE DRAWN BY CHECKED  
1 : 100@A1 05/09/2019 GS AB

PROJECT No. \_\_\_\_\_ DRAWING No. \_\_\_\_\_ REVISION \_\_\_\_\_



KEY PLAN			
REV	DESCRIPTION	DRN	DATE
1	ISSUED FOR SSD2	BM	06/09/19

**COPYRIGHT**  
ALL RIGHTS RESERVED. THIS WORK IS COPYRIGHT AND CANNOT BE REPRODUCED OR COPIED IN ANY FORM OR BY ANY MEANS (GRAPHIC, ELECTRONIC OR MECHANICAL INCLUDING PHOTOCOPYING) WITHOUT THE WRITTEN PERMISSION OF THE PRINCIPAL UNDER THE TERMS OF THE CONTRACT. ANY LICENCE, EXPRESS OR IMPLIED, TO USE THE DOCUMENT FOR ANY PURPOSE WHATSOEVER IS RESTRICTED TO THE TERMS OF THE AGREEMENT OR IMPLIED AGREEMENT WITH THE PRINCIPAL UNDER THE TERMS OF THE CONTRACT.

**DIMENSIONS**  
**USE FIGURED DIMENSIONS, DO NOT SCALE. CONTRACTORS MUST VERIFY ALL DIMENSIONS ON THE SITE BEFORE COMMENCING ANY WORK OR MAKING ANY SHOP DRAWING WHICH MUST BE SUBMITTED AND REVIEWED BEFORE MANUFACTURE.**

**FIXTURES, FITTINGS & EQUIPMENT SPECIFICATIONS**  
SUBSTITUTE FF&E EQUIPMENT SPECIFICATIONS  
THE FIT-OUT DESIGN AND DOCUMENTATION HAS BEEN COMPLETED ON THE BASIS OF FF&E AND EQUIPMENT ADVISED TO THIS OFFICE AT THE TIME OF BRIEFING THE DESIGN. THE DESIGN PROVISIONS FOR FF&E AND EQUIPMENT INCORPORATES SPATIAL ALLOCATIONS, SERVICING, LOADING AND ACCESS CLEARANCES AND WHERE APPROPRIATE SERVICES REQUIREMENTS, HAVING DUE REGARD FOR SURROUNDING FIXTURES AND FITTINGS. IT SHOULD BE NOTED THAT SUBSTITUTE FF&E OR EQUIPMENT WITH ALTERNATE SPECIFICATIONS SHOULD NOT BE PROCURED PRIOR TO VALIDATING THOSE SPECIFICATIONS AGAINST THE ITEM CONTROL SCHEDULE AND DESIGN PROVISIONS IN THE MODEL. THIS OFFICE ACCEPTS NO RESPONSIBILITY FOR THE PROCUREMENT OF SUBSTITUTE FF&E AND EQUIPMENT WHICH HAS NOT BEEN REVIEWED AND VALIDATED AGAINST THE ORIGINAL DESIGN PROVISIONS.

**SERVICE POINTS DISCLAIMER**  
THE SERVICE POINTS IDENTIFIED ON THESE DRAWINGS HAVE BEEN OVERLAYED FROM THE BUILDING SERVICES ENGINEERING MODEL AND ARE PROVIDED FOR INFORMATION AND SET-OUT PURPOSES ONLY. WE HAVE BEEN ADVISED BY THE SERVICES ENGINEERS THAT THE POINTS REPRESENTED ON THESE DRAWINGS ARE CORRECT AT THE TIME OF PUBLICATION. THIS OFFICE DOES NOT WARRANT THE ACCURACY OF THIS DATA. REFER TO THE BUILDING SERVICES ENGINEERING DOCUMENTATION FOR THE INSTALLATION OF THE SERVICES POINTS, AND THE INTERFACE BETWEEN THE SERVICES POINTS AND THE RESPECTIVE ENGINEERING SYSTEMS.

## ISSUED FOR INFORMATION

ARCHITECTS

STH

BATESSMART.

ABN: 21 134 470 065  
LEVEL 4, 88 YORK STREET  
SYDNEY NSW 2000, AUSTRALIA  
PH: (02) 8299 4600 FAX: (03) 9885 2455

M12147

43 BRISBANE STREET,  
SURRY HILLS NSW 2010  
ABN: 68 094 740 986 PH: (02) 8354 5100  
E: syd@batesmart.com.au

THIS ARCHITECTURAL DESIGN IS THE COPYRIGHT OF SILVER THOMAS HANLEY AND BATES SMART AND SHALL NOT BE REPRODUCED WITHOUT THEIR WRITTEN PERMISSION

PROJECT MANAGER

TSA

MANAGEMENT

CLIENT

NSW GOVERNMENT

Health Infrastructure

Health Northern NSW Local Health District

## TWEED VALLEY HOSPITAL

DRAWING TITLE

EAST ON-GRADE CARPARK

SCALE	DATE	DRAWN BY	CHECKED
1 : 300 @ A1	06/09/19	MC	BS
1 : 600 @ A3			
PROJECT No	DRAWING No	REVISION	
10363	STB-AR-SKE-PRW-8100001	1	

BM 3601 Tweed Valley Hospital TWH\_BS\_SITE\_R2018.dwg

EXTERNAL FINISHES



**PC-01A**  
Light Beige Pigmented Precast



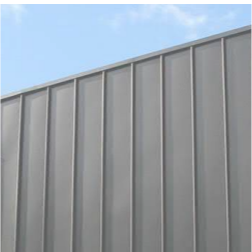
**PC-01B**  
Beige Pigmented Precast



**AL-01**  
Powdercoat Aluminium Light



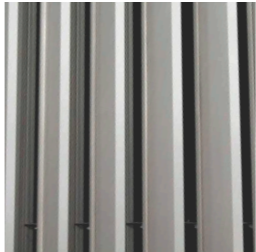
**LP-01**  
Spandek Metal Cladding - Light



**LP-11**  
Enseam Metal Cladding - Light



**HP-01**  
'Forest Hill' Metal Cladding - Light. Solid / 60% perforated



**LV-01**  
Chevron Plant Louvre. Powdercoat Aluminium Light



**BA-01**  
Glazed Ballustrade / Screen



**GL-01**  
High performance vision glazing



**GL-03**  
High performance vision glazing. Dark



**PC-02A**  
Light Ochre Pigmented Precast



**PC-02B**  
Ochre Pigmented Precast



**AL-02**  
Powdercoat Aluminium Medium



**LP-02**  
Spandek Metal Cladding - Medium



**LP-12**  
Enseam Metal Cladding - Medium



**HP-02**  
'Forest Hill' Metal Cladding - Medium. Solid / 60% perforated



**LV-02**  
Chevron Plant Louvre. Powdercoat Aluminium Medium



**BA-02**  
Louvreclad 'Ellenborough' Louvre Screen



**GL-02**  
High performance spandrel glazing. Shadowbox



**GL-04**  
High performance spandrel glazing. Shadowbox. Dark



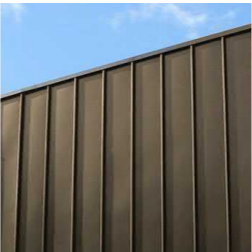
**PC-03**  
Non Pigmented Precast



**AL-03**  
Powdercoat Aluminium Warm



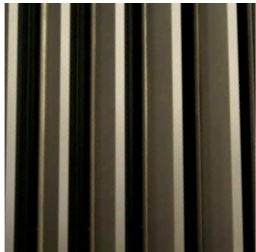
**LP-03**  
Spandek Metal Cladding - Warm



**LP-13**  
Enseam Metal Cladding - Warm



**HP-03**  
'Forest Hill' Metal Cladding - Warm. Solid / 60% perforated



**LV-03**  
Chevron Plant Louvre. Powdercoat Aluminium Warm



**AL-04**  
Powdercoat Aluminium Beige



**AL-05**  
Powdercoat Aluminium Ochre