

SITE, VEHICLE ACCESS

The site for the Tweed Valley Hospital is located in close proximity to the town lands of Kingscliff and Cudgen, and is accessed on Cudgen Road, accessed via Tweed Coast Road (3.3km) or Cudgen Road (6.3m) from the Pacific motorway (M1). The hospital will predominantly be approached from the west via Tweed Coast Road which provides access from Chinderah to Wooyung situated on the coastline south of Kingscliff. Access is also possible from Kingscliff town centre via Turnock Street. Site vehicle access on Cudgen Road is to be provided by four new site entrances, identified in the adjoining plan as A, B ,C and D. The site entrances have been developed in accordance with the site master-plan ordering principles, providing functional traffic type segregation required for the safe and efficient operation of the hospital. The road network further embodies capacity to extend to support future development of complementary program.

The on-site road network design provides a segregated public realm and logistics vehicle network. The public realm is located centrally (Entrance B) on axis with the hospital entrance and provides access via a landscaped Boulevard to public parking, Hospital and Health Hub entrances. A secondary public entrance (Entrance C), a left-in slip road provides direct access to the east On-Grade Carpark, proximate to the hospitals ground level east specialist department entrance.

Two dedicated peripheral logistics, staff and emergency entrances have been provided (Entrances A and D. These entrances are linked via the north service road located discretely to the north of the hospital providing access to various ambulance setdowns, logistics yard and staff carparking.

PUBLIC EMERGENCY SETDOWN

STAFF

STAFF SECONDARY

AMBULANCE

AMBULANCE SECONDARY

SERVICE VEHICLES

GENERAL PUBLIC

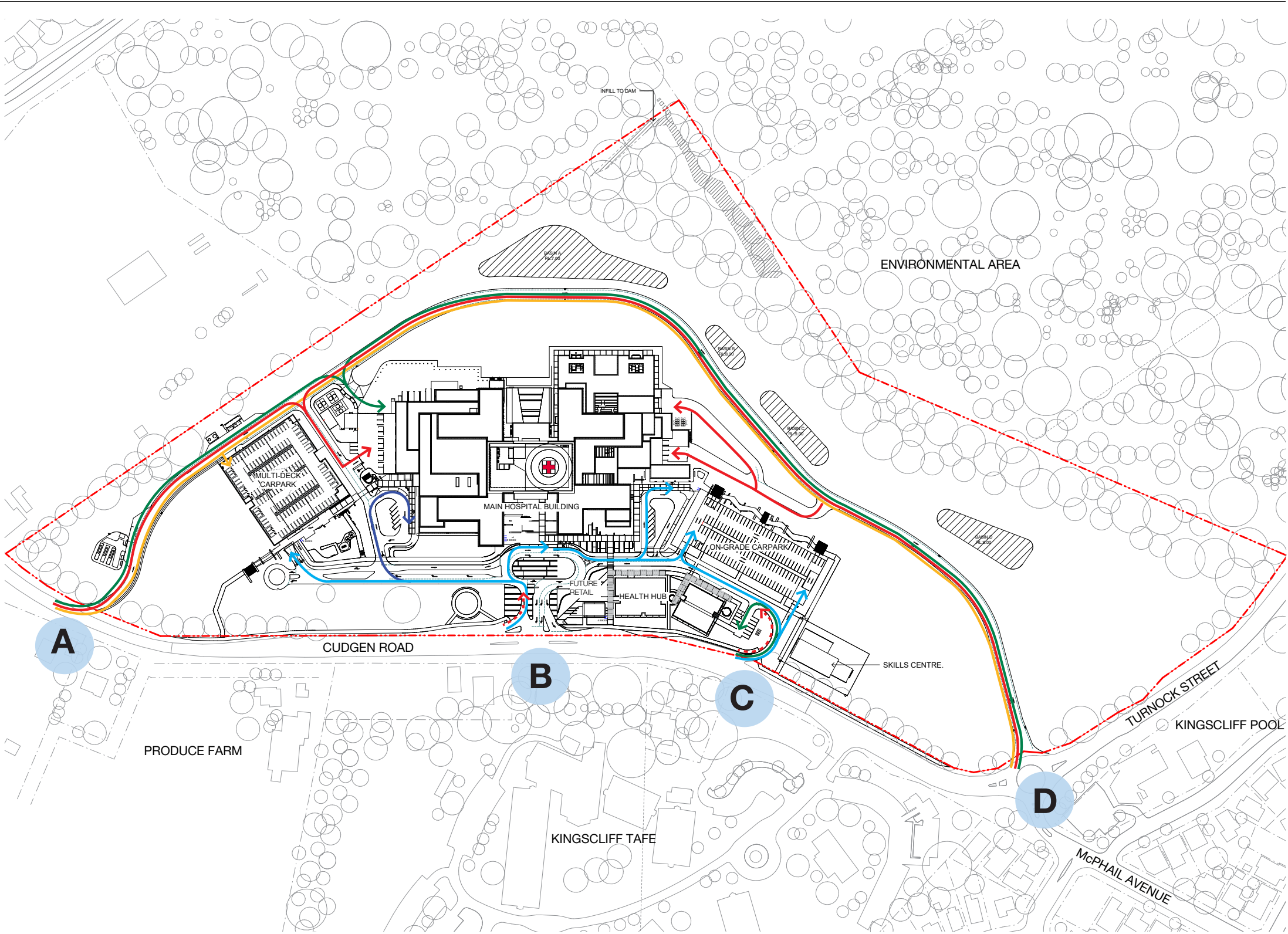
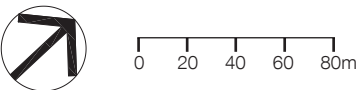


Figure 15. Site Plan - Site, Vehicle Access



- A - Left only slip-road (not public)
- B - Public Main Hospital Entrance
- C - Public left only slip-road
- D - Turnock Street round-about (not public)

SITE, VEHICLE EGRESS

Vehicle egress is to be accommodated at site entrances B and D, with entrances A and C being dedicated left-in site access entrances only.

All public vehicle egress will be via entrance B, being a new traffic light controlled intersection on Cudgen Road. This new intersection accommodates both left and right turn options and has been designed providing a single left slip road exit to Cudgen Road and twin right turn lanes (heading west to Tweed Coast Road) supported by appropriate queuing capacity, accommodating peak traffic flow demand.

Logistics Staff car and emergency vehicle egress is to occur via entrance D, which is a new site road connection to the Cudgen Road /Turnock Street round-about junction.

The on-site road network and carpark design has been designed to allow contingency egress and access via the main hospital entrance (Entrance B).

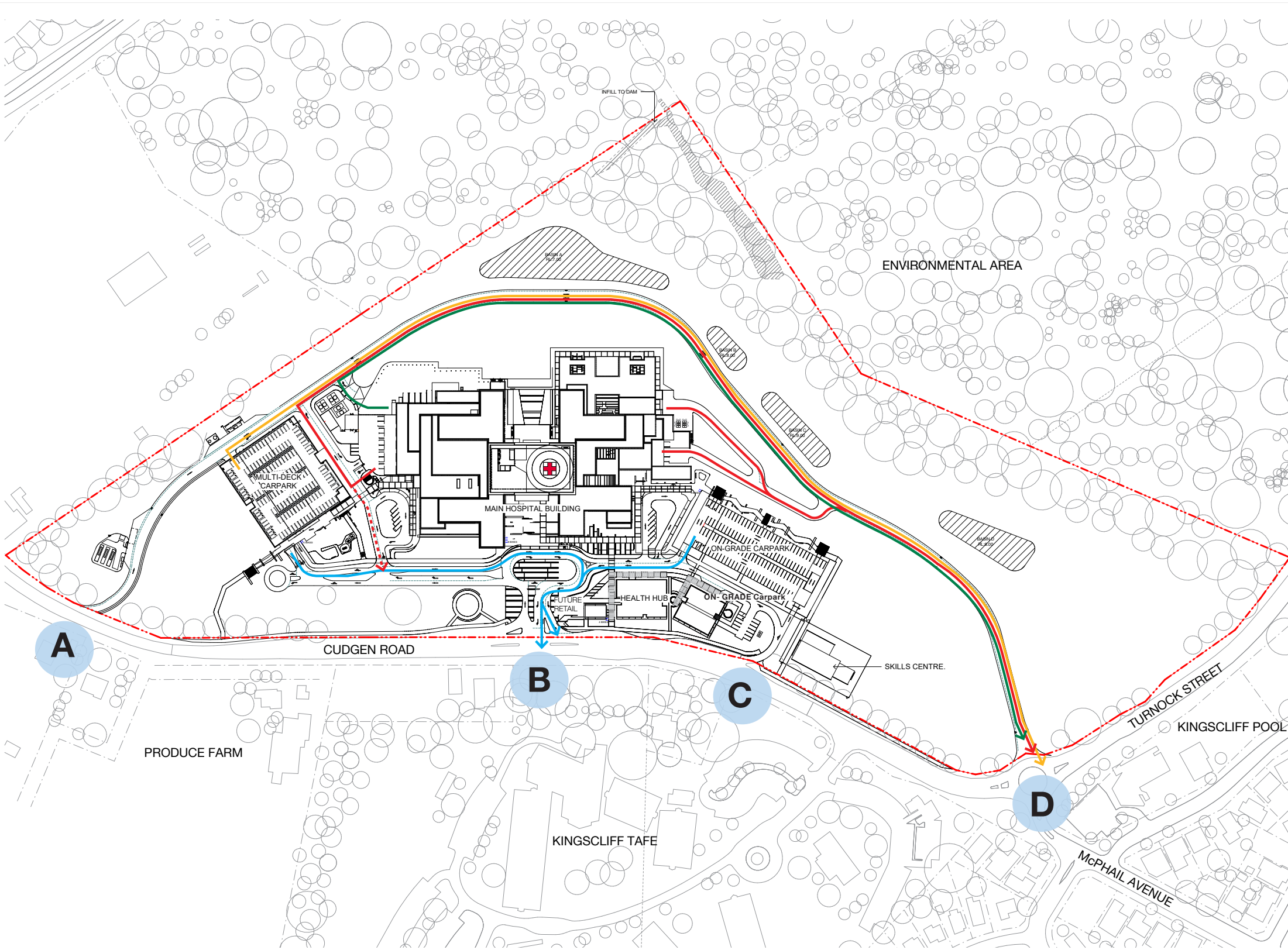


Figure 16. Site Plan - Site, Vehicle Egress

- STAFF
- STAFF SECONDARY
- AMBULANCE
- AMBULANCE SECONDARY
- SERVICE VEHICLES
- GENERAL PUBLIC

- A - Left only slip-road (not public)
- B - Public Main Hospital Entrance
- C - Public left only slip-road
- D - Turnock Street round-about (not public)

PUBLIC VEHICLE CIRCULATION

The public vehicle circulation strategy for the site provides a clear and intuitive arrangement. The public roadway network comprises the main entry (B) and secondary access-only slip road (C).

The main public entrances links to an on-site Boulevard, which runs parallel to Cudgen Road.

The Boulevard connects the public realm through the length of the site in parallel to the Green Spine and Cudgen Road, providing landscaped pedestrian and public vehicle access across the site. To the west the Boulevard provides public access to the Multi-Deck Carpark, and in the future case will terminate with a future complementary development and associated public set-down.

The Boulevard will be extended east in the future to support development of future complementary program

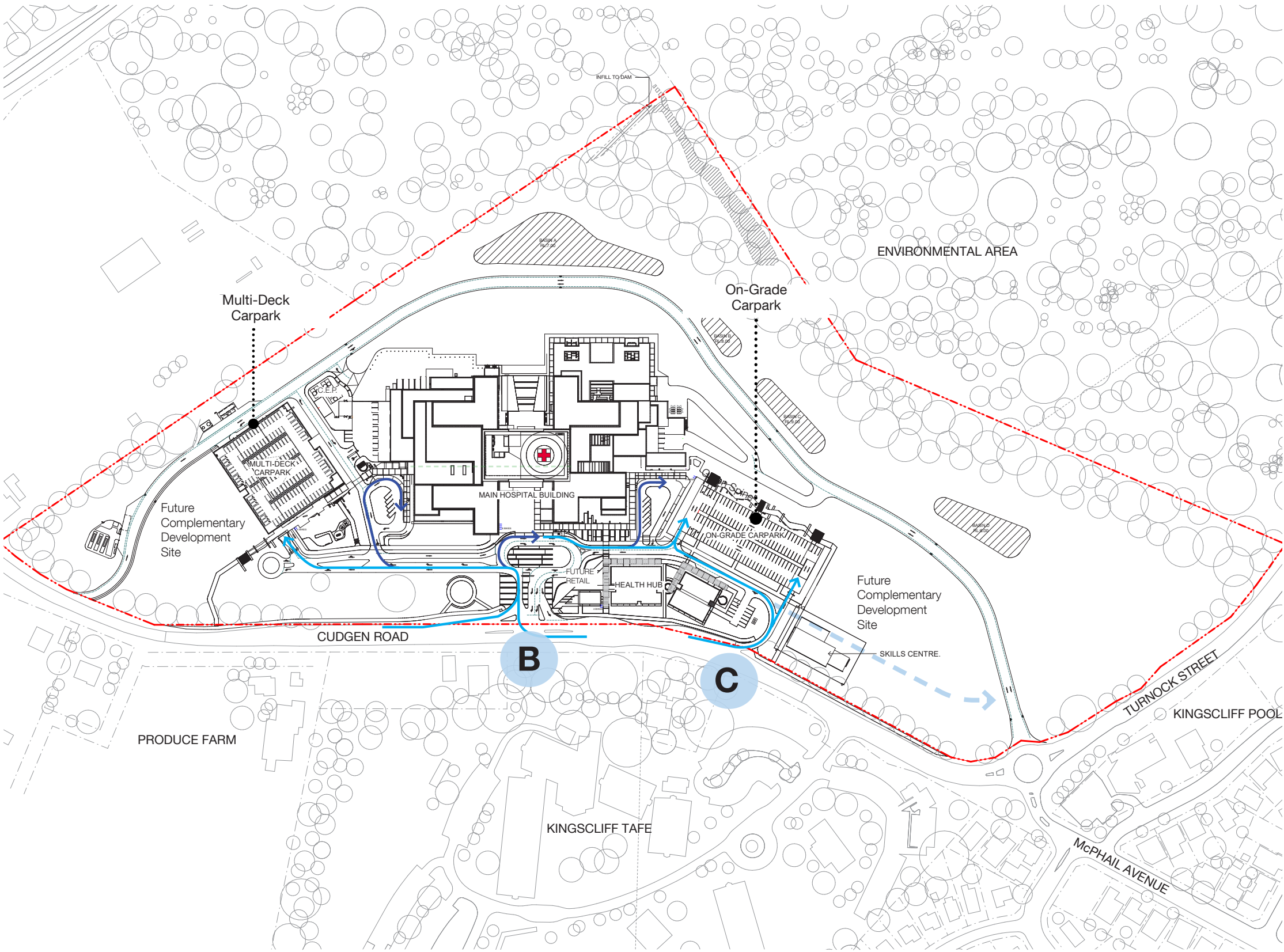


Figure 17. Site Plan - Vehicle Access, Public Realm

PUBLIC SETDOWN

GENERAL PUBLIC

PUBLIC SETDOWN

There are public set-downs provided to the main and secondary entrance locations to the hospital. This includes provision of a public set-down area adjacent the main entrance plaza located directly in front of the hospital at ground level. To the west at lower ground level there is provision for a public set-down complemented with short stay parking, servicing the Emergency Department. To the east at ground level there is provision for a public set complemented with short stay parking, servicing a range of proximate specialist departments.

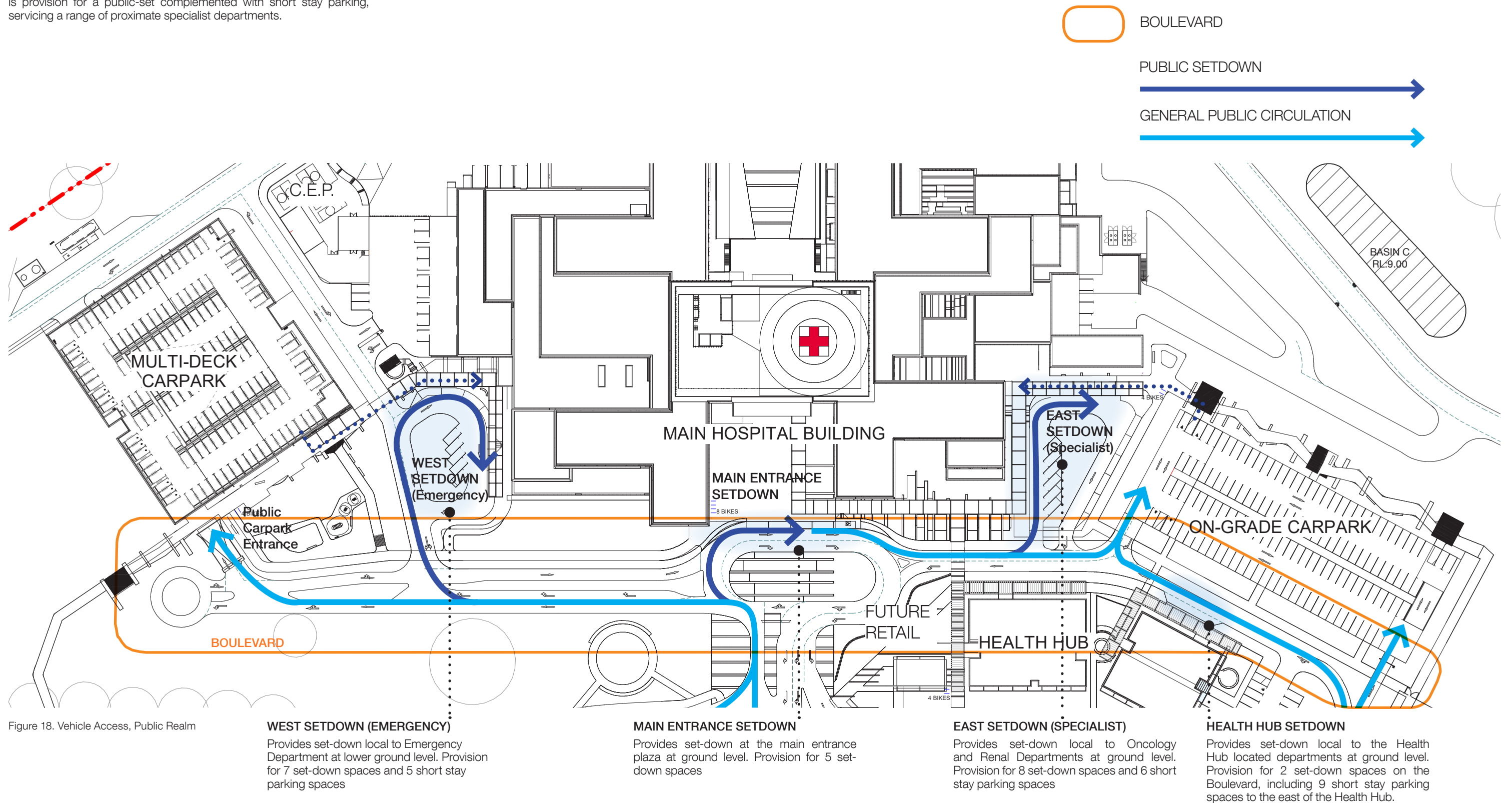


Figure 18. Vehicle Access, Public Realm

BOULEVARD

The main public access road on site is conceived as a tree lined Boulevard. The roadway which includes pedestrian pathways with shade trees to enrich the hospital's southern public realm interface with Cudgen Road

The Boulevard runs parallel to Cudgen Road, providing access to the future development zone located to the south of the Multi-Deck Carpark and will in the future be extended east towards Turnock Street to provide public access to future Complementary Program.



Figure 19a. Boulevard Section - Turf

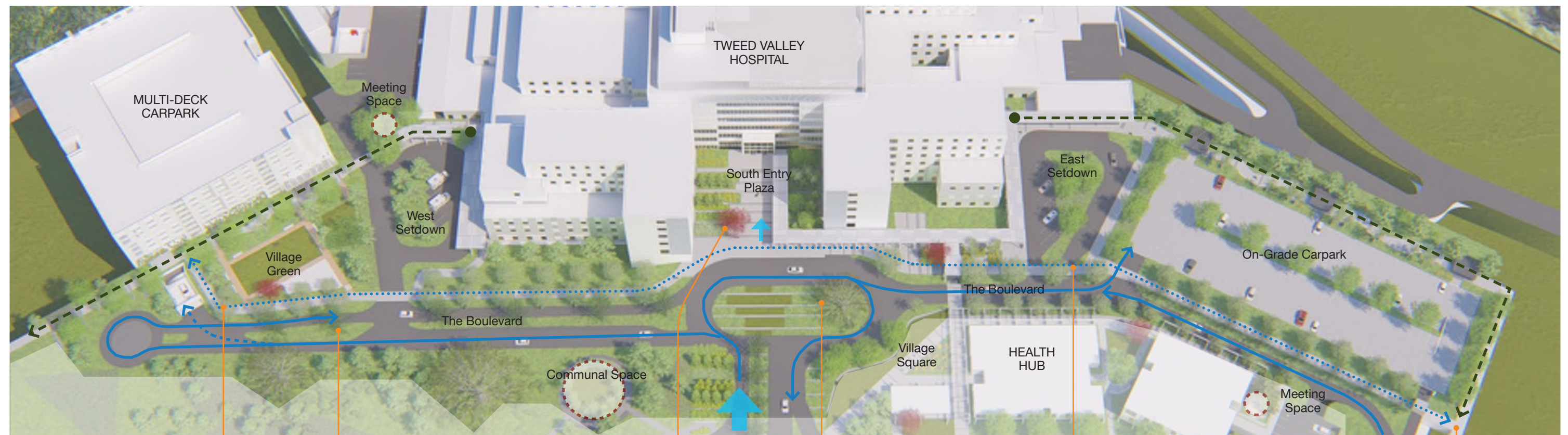


Figure 19b. Boulevard

Boulevard connection to Green Spine

Hoop Pines planted in Boulevard central median

Feature Tree

Hoop Pines to identify entry

All pedestrian crossings to prioritise pedestrian movement

Boulevard connection to Green Spine and Cudgen Road