

1 Roof Plan Context - SSD
Plan 1 : 300

KEY PLAN

REV	DESCRIPTION	DRN	DATE
1	ISSUED FOR SSD 2	BM	06/09/19

COURTYARDS / ROOF FINISHES
LEGEND

TERRACE

SKYLIGHT

COURTYARD BELOW

BALLAST TYPE
50% TUMBLED BLUESTONE
50% TUMBLED WHITE QUARTZ.

CONCRETE ROOF

COPYRIGHT

ALL RIGHTS RESERVED. THIS WORK IS COPYRIGHT AND CANNOT BE REPRODUCED OR COPIED IN ANY FORM OR BY ANY MEANS (GRAPHIC, ELECTRONIC OR MECHANICAL INCLUDING PHOTOCOPYING) WITHOUT THE WRITTEN PERMISSION OF THE PRINCIPAL UNDER THE TERMS OF THE CONTRACT. ANY LICENCE, EXPRESS OR IMPLIED, TO USE THE DOCUMENT FOR ANY PURPOSE WHATSOEVER IS RESTRICTED TO THE TERMS OF THE AGREEMENT OR IMPLIED AGREEMENT WITH THE PRINCIPAL UNDER THE TERMS OF THE CONTRACT.

DIMENSIONS

USE FIGURED DIMENSIONS. DO NOT SCALE. CONTRACTORS MUST VERIFY ALL DIMENSIONS ON THE SITE BEFORE COMMENCING ANY WORK OR MAKING ANY SHOP DRAWING WHICH MUST BE SUBMITTED AND REVIEWED BEFORE MANUFACTURE.

FIXTURES, FITTINGS & EQUIPMENT SPECIFICATIONS

SUBSTITUTE FF&E EQUIPMENT SPECIFICATIONS
THE FIT-OUT DESIGN AND DOCUMENTATION HAS BEEN COMPLETED ON THE BASIS OF FF&E AND EQUIPMENT ADVISED TO THIS OFFICE AT THE TIME OF BRIEFING THE DESIGN. THE DESIGN PROVISIONS FOR FF&E AND EQUIPMENT INCORPORATES SPATIAL ALLOCATIONS, SERVICING, LOADING AND ACCESS CLEARANCES AND WHERE APPROPRIATE SERVICES REQUIREMENTS, HAVING DUE REGARD FOR SURROUNDING FIXTURES AND FITTINGS. IT SHOULD BE NOTED THAT SUBSTITUTE FF&E OR EQUIPMENT WITH ALTERNATE SPECIFICATIONS SHOULD NOT BE PROCURED PRIOR TO VALIDATING THOSE SPECIFICATIONS AGAINST THE ITEM CONTROL SCHEDULE AND DESIGN PROVISIONS IN THE MODEL. THIS OFFICE ACCEPTS NO RESPONSIBILITY FOR THE PROCUREMENT OF SUBSTITUTE FF&E AND EQUIPMENT WHICH HAS NOT BEEN REVIEWED AND VALIDATED AGAINST THE ORIGINAL DESIGN PROVISIONS.

SERVICE POINTS DISCLAIMER

THE SERVICE POINTS IDENTIFIED ON THESE DRAWINGS HAVE BEEN OVERLAYED FROM THE BUILDING SERVICES ENGINEERING MODEL AND ARE PROVIDED FOR INFORMATION AND SET-OUT PURPOSES ONLY. WE HAVE BEEN ADVISED BY THE SERVICES ENGINEERS THAT THE POINTS REPRESENTED ON THESE DRAWINGS ARE CORRECT AT THE TIME OF PUBLICATION. THIS OFFICE DOES NOT WARRANT THE ACCURACY OF THIS DATA. REFER TO THE BUILDING SERVICES ENGINEERING DOCUMENTATION FOR THE INSTALLATION OF THE SERVICES POINTS, AND THE INTERFACE BETWEEN THE SERVICES POINTS AND THE RESPECTIVE ENGINEERING SYSTEMS.

ISSUED FOR INFORMATION

ARCHITECTS

BATESSMART.

ABN: 21 134 476 065
LEVEL 4, 89 YORK STREET
SYDNEY NSW 2000, AUSTRALIA
PH: (02) 8299 4600 FAX: (03) 9885 2455

M12147
43 BRISBANE STREET,
SURRY HILLS NSW 2010
ABN: 68 094 740 986 PH: (02) 8354 5100
E: syd@batesmart.com.au

THIS ARCHITECTURAL DESIGN IS THE COPYRIGHT OF SILVER THOMAS HANLEY AND BATES SMART AND SHALL NOT BE REPRODUCED WITHOUT THEIR WRITTEN PERMISSION

PROJECT MANAGER

CLIENT

PROJECT

TWEED VALLEY HOSPITAL

DRAWING TITLE

HOSPITAL HELIPAD & ROOF PLAN

SCALE

DATE

DRAWN BY

CHECKED

1 : 300@A1

06/09/19

CH

BS

1 : 600@A3

PROJECT No

DRAWING No

REVISION

10363

STB-AR-SKE-MHB-2500001

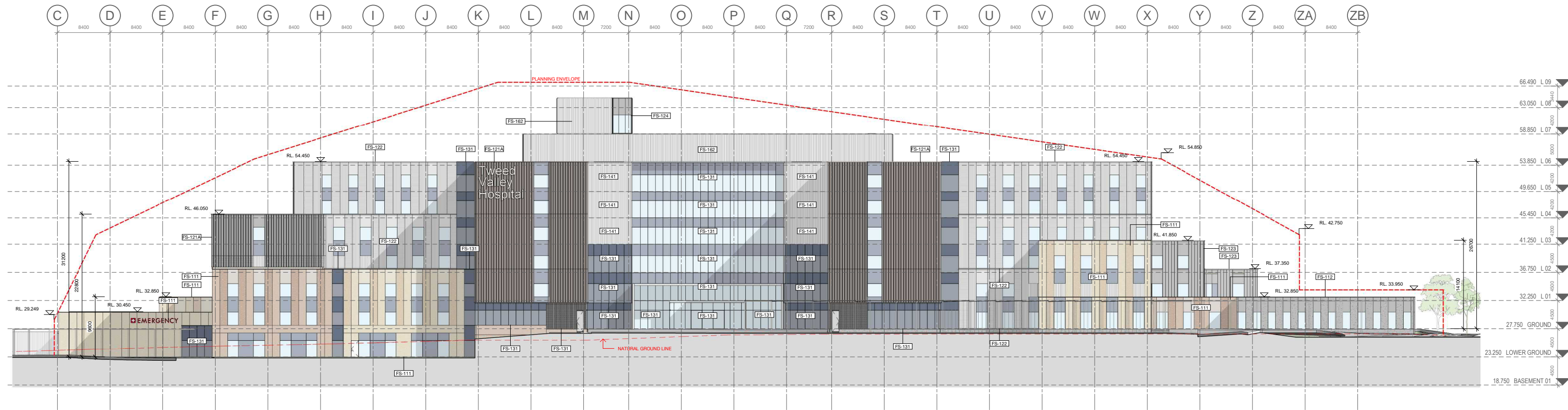
1

0

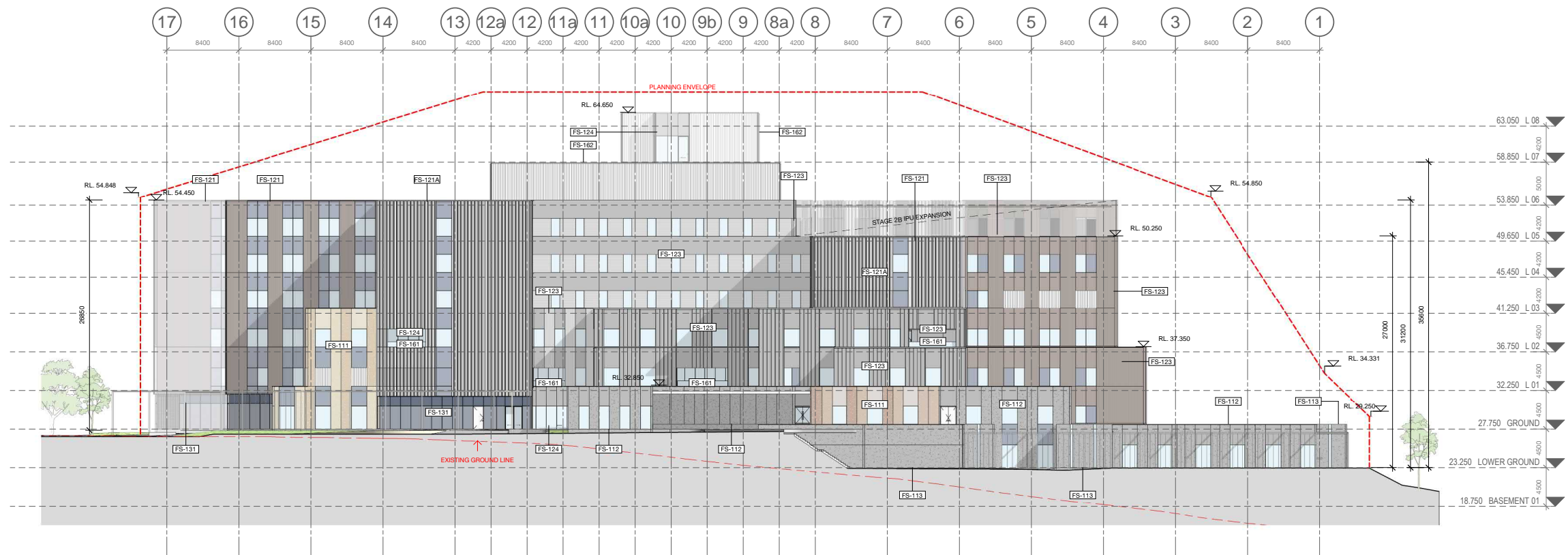
15

30 m

BM 300/Tweed Valley Hospital/AL BS FACADE 8/2018/04



1 Key Elevation 1
Elevation 1 : 300



2 Key Elevation 2
Elevation 1 : 300

FAÇADE TYPE LEGEND

FS-111 PRECAST CONCRETE PANEL, PIGMENTED, OFF FORM FINISH, HIGH PERFORMANCE GLAZING ALUMINIUM MPC FRAME, SHADOWBOX SPANDREL GLASS OR ALUMINIUM FLAT PANEL MPC, ALUMINIUM LOUVRES TO PLANT AREAS, MPC

FS-112 PRECAST CONCRETE PANEL, NON-PIGMENTED, OFF FORM FINISH, HIGH PERFORMANCE GLAZING ALUMINIUM MPC FRAME, SHADOWBOX SPANDREL GLASS OR ALUMINIUM FLAT PANEL MPC, ALUMINIUM LOUVRES TO PLANT AREAS, MPC

FS-113 PRECAST CONCRETE PANEL, NON-PIGMENTED / BASEMENT WALL/SERVICE AREAS (NO GLAZING), ALUMINIUM LOUVRES TO PLANT AREAS, MPC

FS-121 LOW PROFILE METAL CLADDING, METALLIC COLORBOND, COLOUR TBC, WITH HIGH PERFORMANCE VISION GLASS AND SHADOWBOX SPANDREL GLASS IN POWDERCOAT ALUMINIUM FRAME MPC, ALUMINIUM LOUVRES TO PLANT AREAS, MPC

FS-121A GABLE END, HIGH PROFILE METAL CLADDING SOLID / PERFORATED TO OPEN STAIR, WITH HIGH PERFORMANCE VISION GLASS / SHADOWBOX SPANDREL GLASS IN POWDERCOAT ALUMINIUM FRAME MPC.

FS-122 LOW PROFILE METAL CLADDING, METALLIC COLORBOND, COLOUR TBC, WITH HIGH PERFORMANCE VISION GLASS AND ALTERNATING METAL SPANDREL MPC / SHADOWBOX SPANDREL GLASS IN POWDERCOAT ALUMINIUM FRAME MPC, ALUMINIUM LOUVRES TO PLANT AREAS, MPC

FS-123 LOW PROFILE METAL CLADDING, METALLIC COLORBOND, COLOUR TBC, HIGH PERFORMANCE VISION GLAZING MPC / METAL SPANDREL MPC, IN ALUMINIUM FRAME MPC, ALUMINIUM LOUVRES TO PLANT AREAS, MPC

FS-124 SILL TO CEILING WINDOW WALL, HIGH PERFORMANCE VISION GLASS / ALUMINIUM SPANDREL PANELS MPC, ALUMINIUM LOUVRES TO PLANT AREAS, MPC.

FS-131 CURTAIN WALL FAÇADE, WITH HIGH PERFORMANCE VISION GLASS AND SHADOWBOX SPANDREL GLASS IN POWDERCOAT ALUMINIUM FRAME MPC, ALUMINIUM LOUVRES TO PLANT AREAS, MPC, INCLUDES AIRLOCKS AND METAL CLAD PORTAL

FS-141 PLANT SCREEN LOUVRE SYSTEM

FS-151 GROUND LEVEL CANOPIES TBC

FS-161 GLASS BALUSTRADES TBC

FS-162 VERTICAL CHEVRON LOUVRE SCREEN

MPC = Metallic Powdercoat. Colour TBC.

KEY PLAN

ISSUED FOR INFORMATION

ARCHITECTS

STH BATESSMART.

M12147

43 BRISBANE STREET,
SYDNEY NSW 2000, AUSTRALIA
PH: (02) 8299 4800 FAX: (02) 9555 2455
E: syd@batesmart.com.au

THIS ARCHITECTURAL DESIGN IS THE COPYRIGHT OF SILVER THOMAS HANLEY AND BATES SMART AND SHALL NOT BE REPRODUCED WITHOUT THEIR WRITTEN PERMISSION

PROJECT MANAGER

TSA
MANAGEMENT

CLIENT

NSW **Health** **Health**
GOVERNMENT Infrastructure Northern NSW
Local Health District

PROJECT

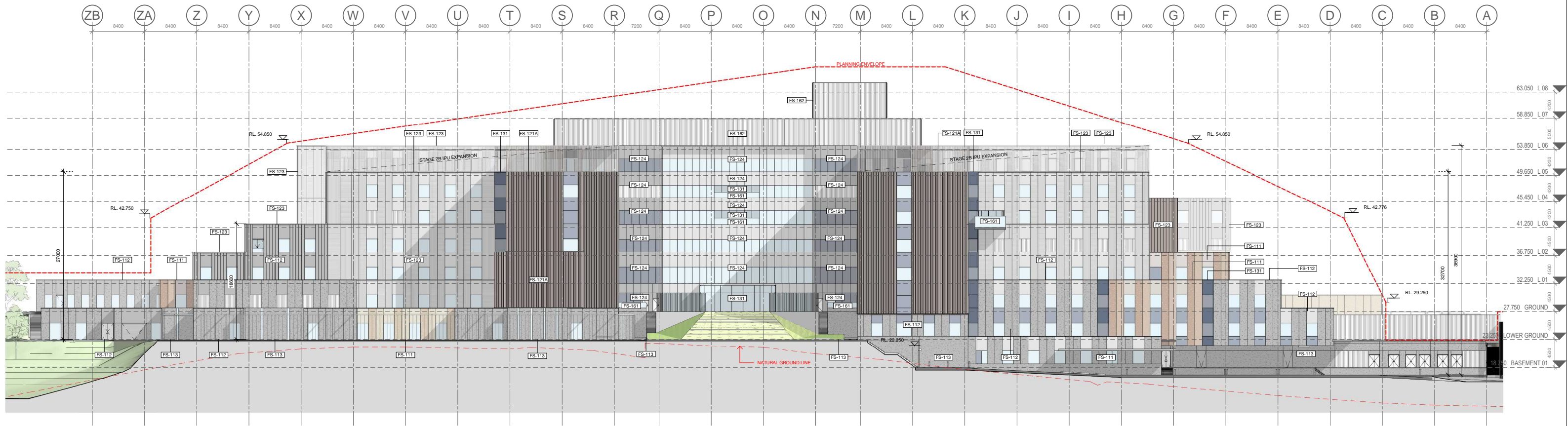
TWEED VALLEY HOSPITAL

DRAWING TITLE

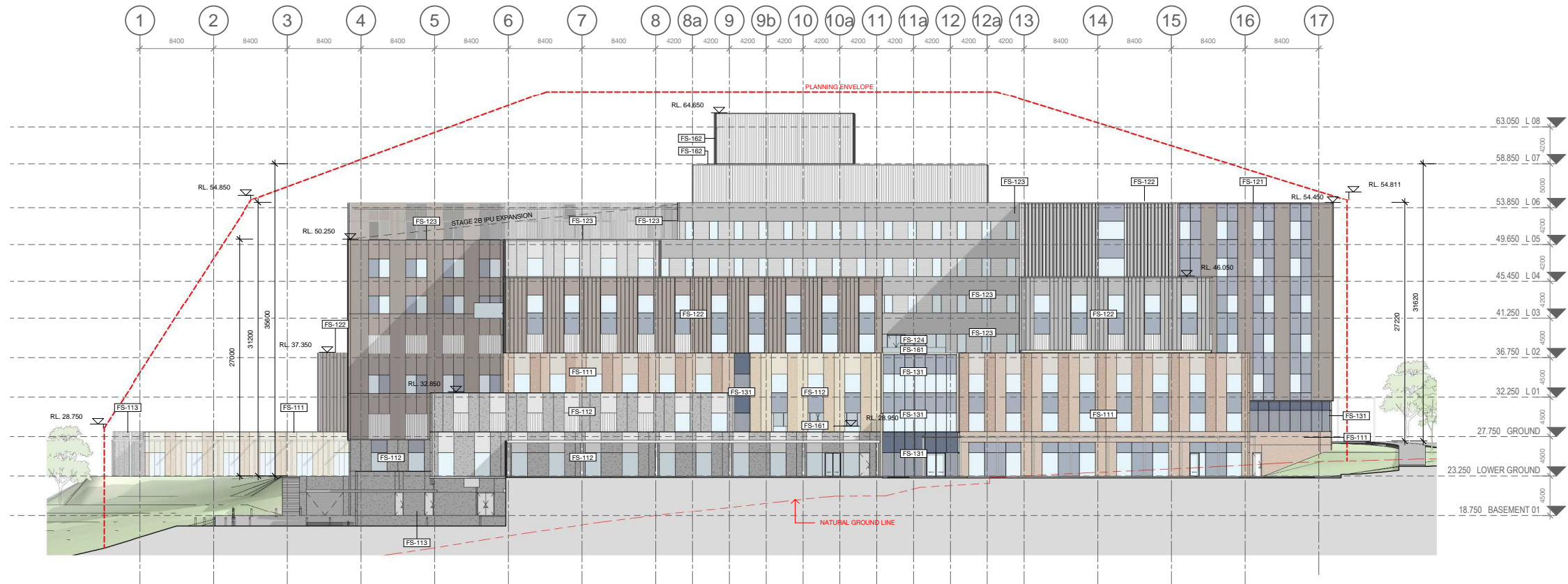
KEY ELEVATIONS 1 & 2

SCALE 1 : 300 @ A1 1 : 600 @ A3 DATE 06/09/19 DRAWN BY MC CHECKED BS

PROJECT No 10363 DRAWING No STB-AR-SKE-MHB-4000001 REVISION 1



3 Key Elevation 3
Elevation 1 : 300



4 Key Elevation 4
Elevation 1 : 300

FAÇADE TYPE LEGEND

FS-111 PRECAST CONCRETE PANEL, PIGMENTED, OFF FORM FINISH, HIGH PERFORMANCE GLAZING ALUMINIUM MPC FRAME, SHADOWBOX SPANDREL GLASS OR ALUMINIUM FLAT PANEL MPC, ALUMINIUM LOUVRES TO PLANT AREAS, MPC

FS-112 PRECAST CONCRETE PANEL, NON-PIGMENTED, OFF FORM FINISH, HIGH PERFORMANCE GLAZING ALUMINIUM MPC FRAME, SHADOWBOX SPANDREL GLASS OR ALUMINIUM FLAT PANEL MPC, ALUMINIUM LOUVRES TO PLANT AREAS, MPC

FS-113 PRECAST CONCRETE PANEL, NON-PIGMENTED / BASEMENT WALL/SERVICE AREAS (NO GLAZING), ALUMINIUM LOUVRES TO PLANT AREAS, MPC

FS-121 LOW PROFILE METAL CLADDING, METALLIC COLORBOND, COLOUR TBC, WITH HIGH PERFORMANCE VISION GLASS AND SHADOWBOX SPANDREL GLASS IN POWDERCOAT ALUMINIUM FRAME MPC, ALUMINIUM LOUVRES TO PLANT AREAS, MPC

FS-121A GABLE END, HIGH PROFILE METAL CLADDING SOLID / PERFORTED TO OPEN STAIR, WITH HIGH PERFORMANCE VISION GLASS / SHADOWBOX SPANDREL GLASS IN POWDERCOAT ALUMINIUM FRAME MPC.

FS-122 LOW PROFILE METAL CLADDING, METALLIC COLORBOND, COLOUR TBC, WITH HIGH PERFORMANCE VISION GLASS AND ALTERNATING METAL SPANDREL MPC / SHADOWBOX SPANDREL GLASS IN POWDERCOAT ALUMINIUM FRAME MPC, ALUMINIUM LOUVRES TO PLANT AREAS, MPC

FS-123 LOW PROFILE METAL CLADDING, METALLIC COLORBOND, COLOUR TBC, HIGH PERFORMANCE VISION GLAZING MPC / METAL SPANDREL MPC, IN ALUMINIUM FRAME MPC, ALUMINIUM LOUVRES TO PLANT AREAS, MPC

FS-124 SILL TO CEILING WINDOW WALL, HIGH PERFORMANCE VISION GLASS / ALUMINIUM SPANDREL PANELS MPC, ALUMINIUM LOUVRES TO PLANT AREAS, MPC.

FS-131 CURTAIN WALL FAÇADE, WITH HIGH PERFORMANCE VISION GLASS AND SHADOWBOX SPANDREL GLASS IN POWDERCOAT ALUMINIUM FRAME MPC, ALUMINIUM LOUVRES TO PLANT AREAS, MPC, INCLUDES AIRLOCKS AND METAL CLAD PORTAL

FS-141 PLANT SCREEN LOUVRE SYSTEM

FS-151 GROUND LEVEL CANOPIES TBC

FS-161 GLASS BALUSTRADES TBC

FS-162 VERTICAL CHEVRON LOUVRE SCREEN

MPC = Metallic Powdercoat. Colour TBC.

KEY PLAN

ISSUED FOR INFORMATION

ARCHITECTS

STH BATESSMART.

M12147

43 BRISBANE STREET,
SURREY HILLS NSW 2010
SYDNEY NSW 2000, AUSTRALIA
PH: (02) 8299 4800 FAX: (02) 9885 2455
E: tyd@batesmart.com.au

THIS ARCHITECTURAL DESIGN IS THE COPYRIGHT OF SILVER THOMAS HANLEY AND BATES SMART AND SHALL NOT BE REPRODUCED WITHOUT THEIR WRITTEN PERMISSION

PROJECT MANAGER

TSA
MANAGEMENT

CLIENT

NSW Health **Health Northern NSW**
Infrastructure Local Health District

PROJECT

TWEED VALLEY HOSPITAL

DRAWING TITLE

KEY ELEVATIONS 3 & 4

SCALE DATE DRAWN BY CHECKED
1 : 300 @ A1 06/09/19 MC BS
1 : 600 @ A3

PROJECT No DRAWING No REVISION
10363 STB-AR-SKE-MHB-4000005 1

COPYRIGHT

ALL RIGHTS RESERVED. THIS WORK IS COPYRIGHT AND CANNOT BE REPRODUCED OR COPIED IN ANY FORM OR BY ANY MEANS (GRAPHIC, ELECTRONIC OR MECHANICAL, INCLUDING PHOTOCOPYING) WITHOUT THE WRITTEN PERMISSION OF THE PRINCIPAL UNDER THE TERMS OF THE CONTRACT. ANY LICENCE, EXPRESS OR IMPLIED, TO USE THE DOCUMENT FOR ANY PURPOSE WHATSOEVER IS RESTRICTED TO THE TERMS OF THE AGREEMENT OR IMPLIED AGREEMENT WITH THE PRINCIPAL UNDER THE TERMS OF THE CONTRACT.

DIMENSIONS

USE FIGURED DIMENSIONS, DO NOT SCALE. CONTRACTORS MUST VERIFY ALL DIMENSIONS ON THE SITE BEFORE COMMENCING ANY WORK OR MAKING ANY SHOP DRAWING WHICH MUST BE SUBMITTED AND REVIEWED BEFORE MANUFACTURE.

FIXTURES, FITTINGS & EQUIPMENT SPECIFICATIONS

SUBSTITUTE FF&E EQUIPMENT SPECIFICATIONS

THE FIT-OUT DESIGN AND DOCUMENTATION HAS BEEN COMPLETED ON THE BASIS OF FF&E AND EQUIPMENT ADVISED TO THIS OFFICE AT THE TIME OF BRIEFING THE DESIGN. THE DESIGN PROVISIONS FOR FF&E AND EQUIPMENT INCORPORATES SPATIAL ALLOCATIONS, SERVICING, LOADING AND ACCESS CLEARANCES AND WHERE APPROPRIATE SERVICES REQUIREMENTS, HAVING DUE REGARD FOR SURROUNDING FIXTURES AND FITTINGS. IT SHOULD BE NOTED THAT SUBSTITUTE FF&E OR EQUIPMENT WITH ALTERNATE SPECIFICATIONS SHOULD NOT BE PROCURED PRIOR TO VALIDATING THOSE SPECIFICATIONS AGAINST THE ITEM CONTROL, SCHEDULE AND DESIGN PROVISIONS IN THE MODEL. THIS OFFICE ACCEPTS NO RESPONSIBILITY FOR THE PROCUREMENT OF SUBSTITUTE FF&E AND EQUIPMENT WHICH HAS NOT BEEN REVIEWED AND VALIDATED AGAINST THE ORIGINAL DESIGN PROVISIONS.

SERVICE POINTS DISCLAIMER

THE SERVICE POINTS IDENTIFIED ON THESE DRAWINGS HAVE BEEN OVERLAYED FROM THE BUILDING SERVICES ENGINEERING MODEL, AND ARE PROVIDED FOR INFORMATION AND SET-OUT PURPOSES ONLY. WE HAVE BEEN ADVISED BY THE SERVICES ENGINEERS THAT THE POINTS REPRESENTED ON THESE DRAWINGS ARE CORRECT AT THE TIME OF PUBLICATION. THIS OFFICE DOES NOT WARRANT THE ACCURACY OF THIS DATA. REFER TO THE BUILDING SERVICES ENGINEERING DOCUMENTATION FOR THE INSTALLATION OF THE SERVICES POINTS, AND THE INTERFACE BETWEEN THE SERVICES POINTS AND THE RESPECTIVE ENGINEERING SYSTEMS.