

GRAY PUKSAND

DISCLAIMER
This document may not be secure, may be corrupted in transmission or due to software incompatibility and/or may be amended or altered by third parties after leaving Gray Puksand's possession.

Gray Puksand is not responsible for and accepts no liability for such matters. Subject only to any conflicting provision within any prior binding agreement, by Gray Puksand (which agreement may also contain additional conditions relating to this document and its use):

1. The content of this document is confidential and copyright in it belongs to Gray Puksand. They are permitted only to be opened, read and used by the addressee.
2. All users of this document must carry out all relevant investigations and must examine, take advice as required and satisfy themselves concerning the contents, correctness and sufficiency of the attachment and its contents for their purposes.
3. To the extent permitted by law, all conditions and warranties concerning this document or any use to which they may be put (whether as to quality, outcome, fitness, care, skill or otherwise) whether express or implied by statute, common law, equity, trade, custom or usage or otherwise are expressly excluded.
4. Any person using or relying on this document releases indemnifies, and will keep indemnified, Gray Puksand against all claims, liabilities, loss, costs and expenses arising directly or indirectly out of or in connection with such use or reliance including without limitation any misrepresentation, error or defect in this document.

Contractors to use Architectural drawings for set out.
Contractors to check & verify all Dimensions on Site prior to Construction/Fabrication. Figured Dimensions take precedence over Scaled Dimensions.
Any Discrepancies should be immediately referred to the Architect.
All work to comply with N.C.C. Statutory Authorities & Relevant Australian Standards.

NSW Nominated Architects Scott Moylan 7147 Craig Saltmarsh 6569

HANSENYUNCKEN



REV	DESCRIPTION	DATE
A	ISSUE FOR SSDA	30-04-2020
B	ISSUE FOR SSDA	11-08-2020
C	Issued for MOD1	25-03-2021
D	Issued for MOD1	26-03-2021
E	PRELIMINARY SSDA FINAL DRAFT	20-10-2021
F	Issued For SSDA	03-11-2021

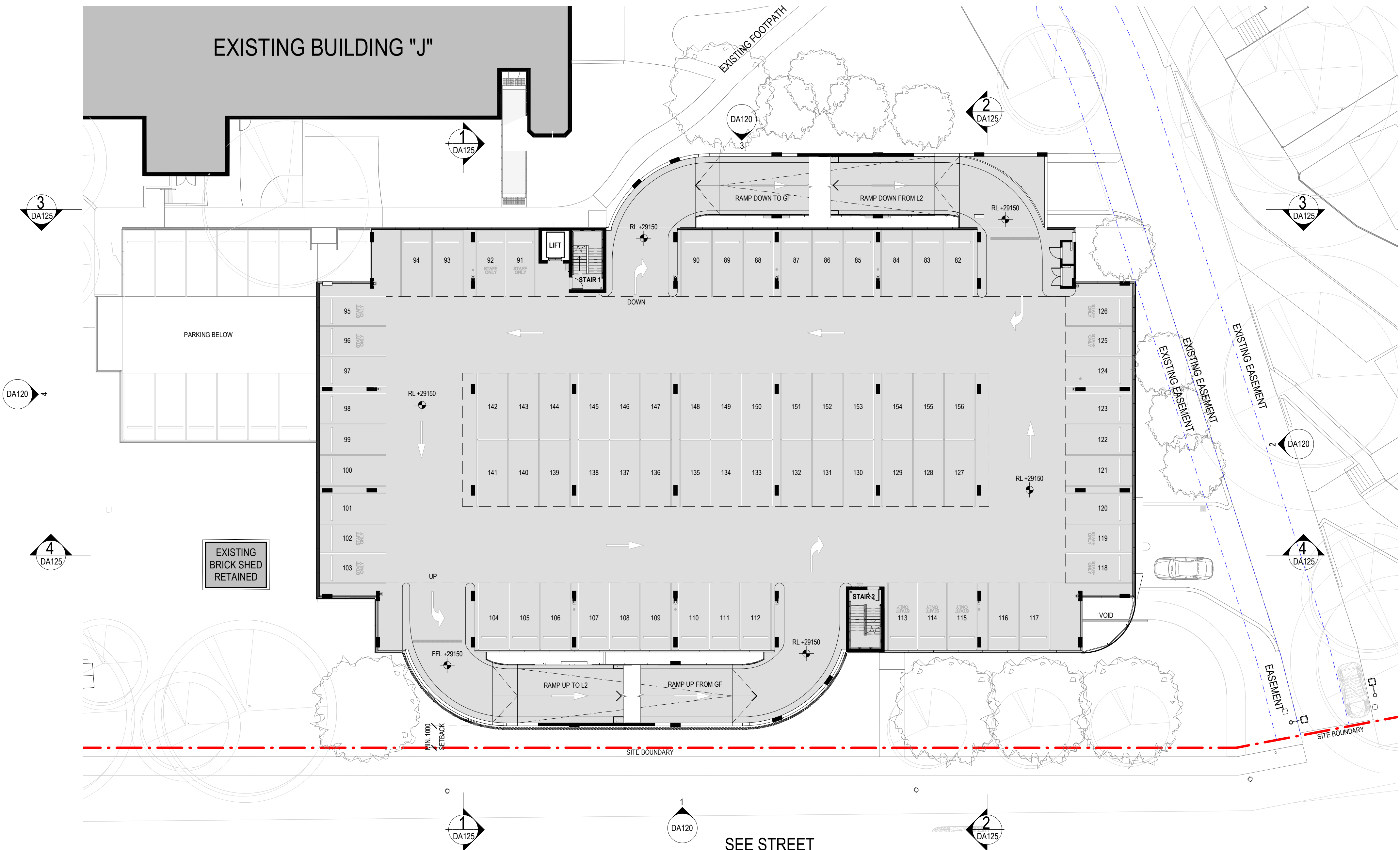
PROJECT NO	220014
DRAWN	RD / TA
CHECKED	RD
APPROVED	BH

TAFE NSW - Meadowbank Multi-Story Car Park Extension Works

PRELIMINARY

GROUND FLOOR PLAN

DWG #	DA100	REV	F
SCALE @ A1	1 : 200		



1 LEVEL 1 FLOOR PLAN
SCALE 1:200

GRAY PUKSAND

DISCLAIMER
This document may not be secure, may be corrupted in transmission or due to software incompatibility and/or may be amended or altered by third parties after leaving Gray Puksand's possession.

Gray Puksand is not responsible for and accepts no liability for such matters. Subject only to any conflicting provision within any prior binding agreement, by Gray Puksand (which agreement may also contain additional conditions relating to this document and its use).

1. The content of this document is confidential and copyright in it belongs to Gray Puksand. They are permitted only to be opened, read and used by the addressee.

2. All users of this document must carry out all relevant investigations and must examine, take advice as required and satisfy themselves concerning the contents, correctness and sufficiency of the attachment and its contents for their purposes.

3. To the extent permitted by law, all conditions and warranties concerning this document or any use to which they may be put (whether as to quality, outcome, fitness, care, skill or otherwise) whether express or implied by statute, common law, equity, trade, custom or usage or otherwise are expressly excluded.

4. Any person using or relying on this document releases indemnifies, and will keep indemnified, Gray Puksand against all claims, liabilities, loss, costs and expenses arising directly or indirectly out of or in connection with such use or reliance including without limitation any misrepresentation, error or defect in this document.

Contractors to use Architectural drawings for set out.
Contractors to check & verify all Dimensions on Site prior to Construction/Fabrication. Figured Dimensions take precedence over Scaled Dimensions.
Any Discrepancies should be immediately referred to the Architect.
All work to comply with N.C.C. Statutory Authorities & Relevant Australian Standards.

NSW Nominated Architects Scott Moylan 7147 Craig Saltmarsh 6569

HANSEN YUNCKEN



REV	DESCRIPTION	DATE
A	ISSUE FOR SSDA	30-04-2020
B	ISSUE FOR SSDA	11-08-2020
C	Issued for MOD1	25-03-2021
D	Issued for MOD1	26-03-2021
E	PRELIMINARY SSDA FINAL DRAFT	20-10-2021
F	Issued For SSDA	03-11-2021

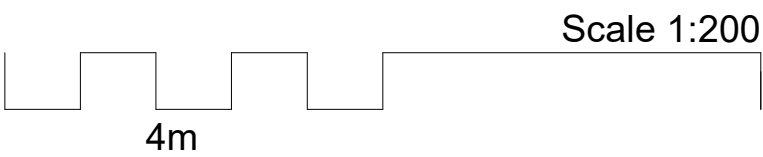
PROJECT NO	220014
DRAWN	RD / TA
CHECKED	RD
APPROVED	BH

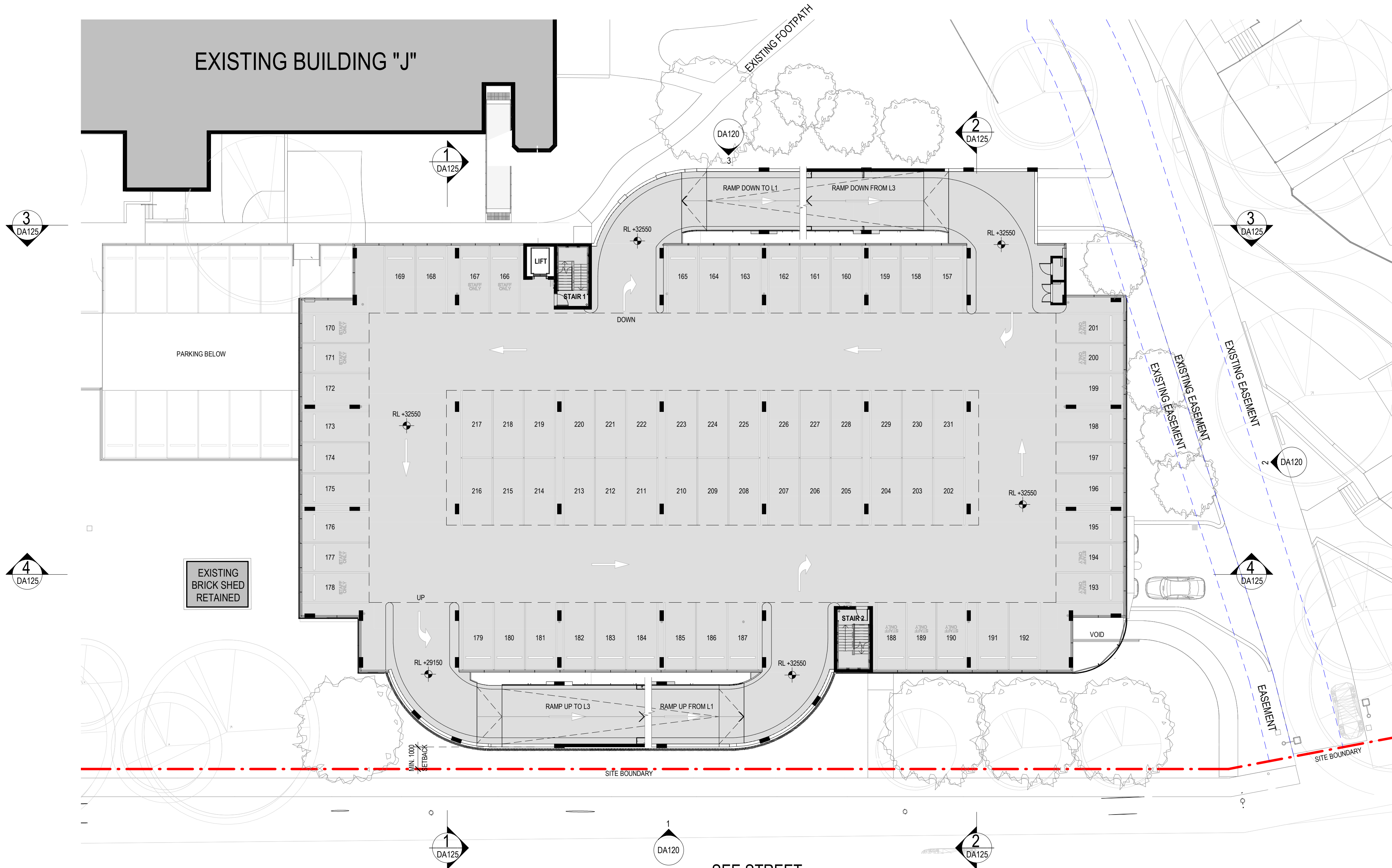
**TAFE NSW - Meadowbank
Multi-Story Car Park
Extension Works**

PRELIMINARY

LEVEL 1 FLOOR PLAN

DWG #	DA101	REV	F
SCALE @ A1	1 : 200		





1 LEVEL 2 FLOOR PLAN
SCALE 1:200

GRAY PUKSAND

DISCLAIMER
This document may not be secure, may be corrupted in transmission or due to software incompatibility and/or may be amended or altered by third parties after leaving Gray Puksand's possession.

Gray Puksand is not responsible for and accepts no liability for such matters. Subject only to any conflicting provision within any prior binding agreement, by Gray Puksand (which agreement may also contain additional conditions relating to this document and its use):

1. The content of this document is confidential and copyright in it belongs to Gray Puksand. They are permitted only to be opened, read and used by the addressee.
2. All users of this document must carry out all relevant investigations and must examine, take advice as required and satisfy themselves concerning the contents, correctness and sufficiency of the attachment and its contents for their purposes.
3. To the extent permitted by law, all conditions and warranties concerning this document or any use to which they may be put (whether as to quality, outcome, fitness, care, skill or otherwise) whether express or implied by statute, common law, equity, trade, custom or usage or otherwise are expressly excluded.
4. Any person using or relying on this document releases indemnifies, and will keep indemnified, Gray Puksand against all claims, liabilities, loss, costs and expenses arising directly or indirectly out of or in connection with such use or reliance including without limitation any misrepresentation, error or defect in this document.

Contractors to use Architectural drawings for set out.
Contractors to check & verify all Dimensions on Site prior to Construction/Fabrication. Figured Dimensions take precedence over Scaled Dimensions.
Any Discrepancies should be immediately referred to the Architect.
All work to comply with N.C.C. Statutory Authorities & Relevant Australian Standards.
NSW Nominated Architects Scott Moylan 7147 Craig Saltmarsh 6569

HANSEN YUNCKEN



REV	DESCRIPTION	DATE
A	ISSUE FOR SSDA	30-04-2020
B	ISSUE FOR SSDA	11-08-2020
C	Issued for MOD1	25-03-2021
D	Issued for MOD1	26-03-2021
E	PRELIMINARY SSDA FINAL DRAFT	20-10-2021
F	Issued For SSDA	03-11-2021

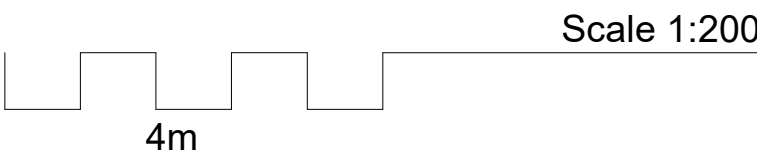
PROJECT NO	220014
DRAWN	RD / TA
CHECKED	RD
APPROVED	BH

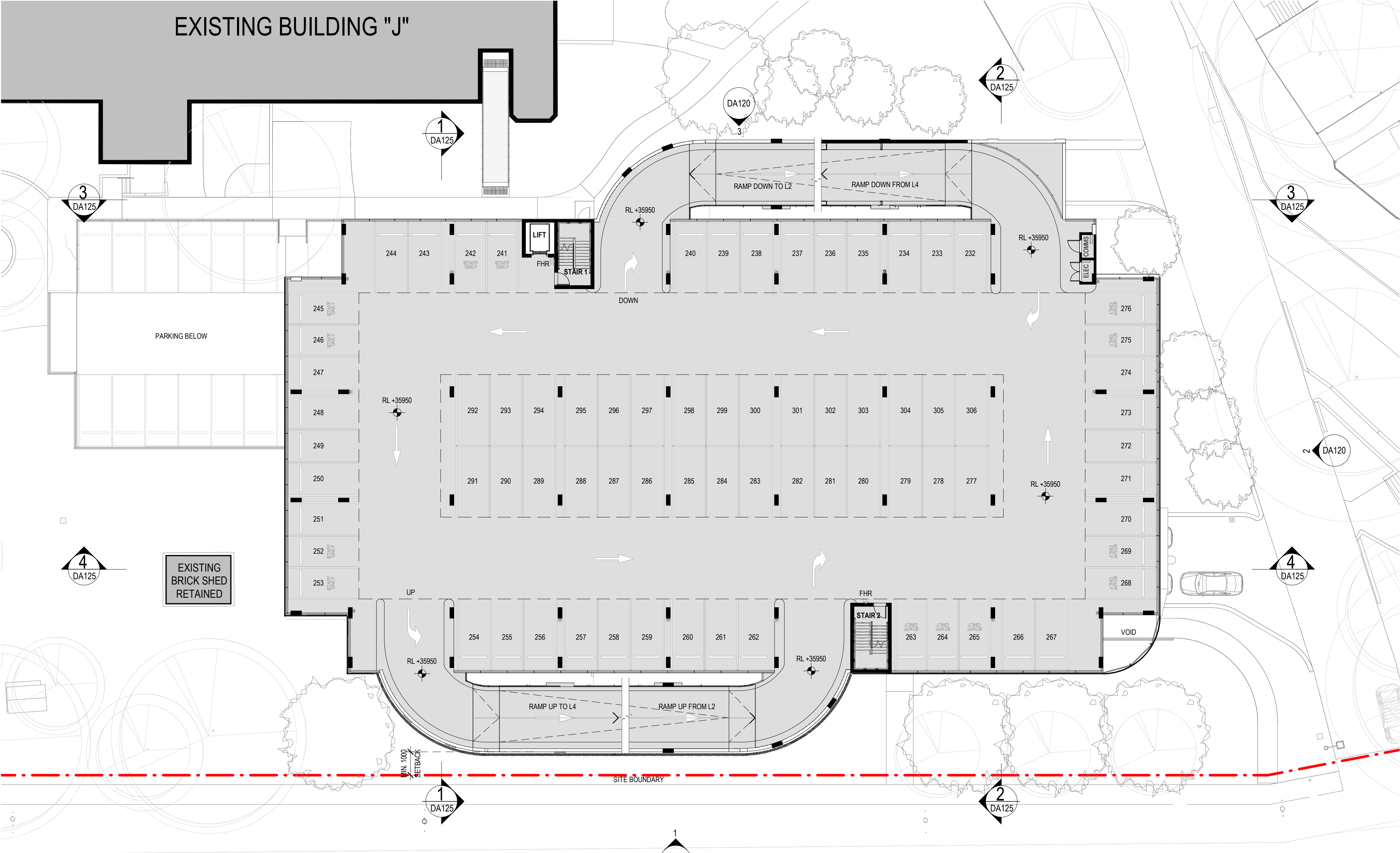
**TAFE NSW - Meadowbank
Multi-Story Car Park
Extension Works**

PRELIMINARY

LEVEL 2 FLOOR PLAN

DWG #	DA102	REV	F
SCALE @ A1	1:200		





1 LEVEL 3 FLOOR PLAN
C2000 SCALE 1:200

GRAY PUKSAND

DISCLAIMER
This document may not be secure, may be corrupted in transmission or due to software incompatibility and/or may be amended or altered by third parties after leaving Gray Puksand's possession.

Gray Puksand is not responsible for and accepts no liability for such matters. Subject only to any conflicting provision within any prior binding agreement, by Gray Puksand (which agreement may also contain additional conditions relating to this document and its use).

1. The content of this document is confidential and copyright in it belongs to Gray Puksand. They are permitted only to be opened, read and used by the addressee.

2. All users of this document must carry out all relevant investigations and must examine, take advice as required and satisfy themselves concerning the contents, correctness and sufficiency of the attachment and its contents for their purposes.

3. To the extent permitted by law, all conditions and warranties concerning this document or any use to which they may be put (whether as to quality, outcome, fitness, care, skill or otherwise) whether express or implied by statute, common law, equity, trade, custom or usage or otherwise are expressly excluded.

4. Any person using or relying on document releases indemnifies, and will keep indemnified, Gray Puksand against all claims, liabilities, loss, costs and expenses arising directly or indirectly out of or in connection with such use or reliance including without limitation any misrepresentation, error or defect in this document.

Contractors to use Architectural drawings for set out.
Contractors to check & verify all Dimensions on Site prior to Construction/Fabrication. Figured Dimensions take precedence over Scaled Dimensions.
Any Discrepancies should be immediately referred to the Architect.
All work to comply with N.C.C. Statutory Authorities & Relevant Australian Standards.

NSW Nominated Architects Scott Moylan 7147 Craig Saltmarsh 6569

HANSEN YUNCKEN



REV	DESCRIPTION	DATE
A	PRELIMINARY SSDA FINAL DRAFT	20-10-2021
B	Issued For SSDA	03-11-2021

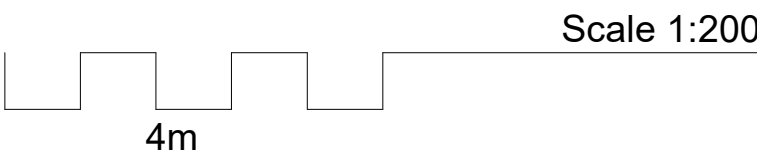
PROJECT NO	220014
DRAWN	RD
CHECKED	RD
APPROVED	BH

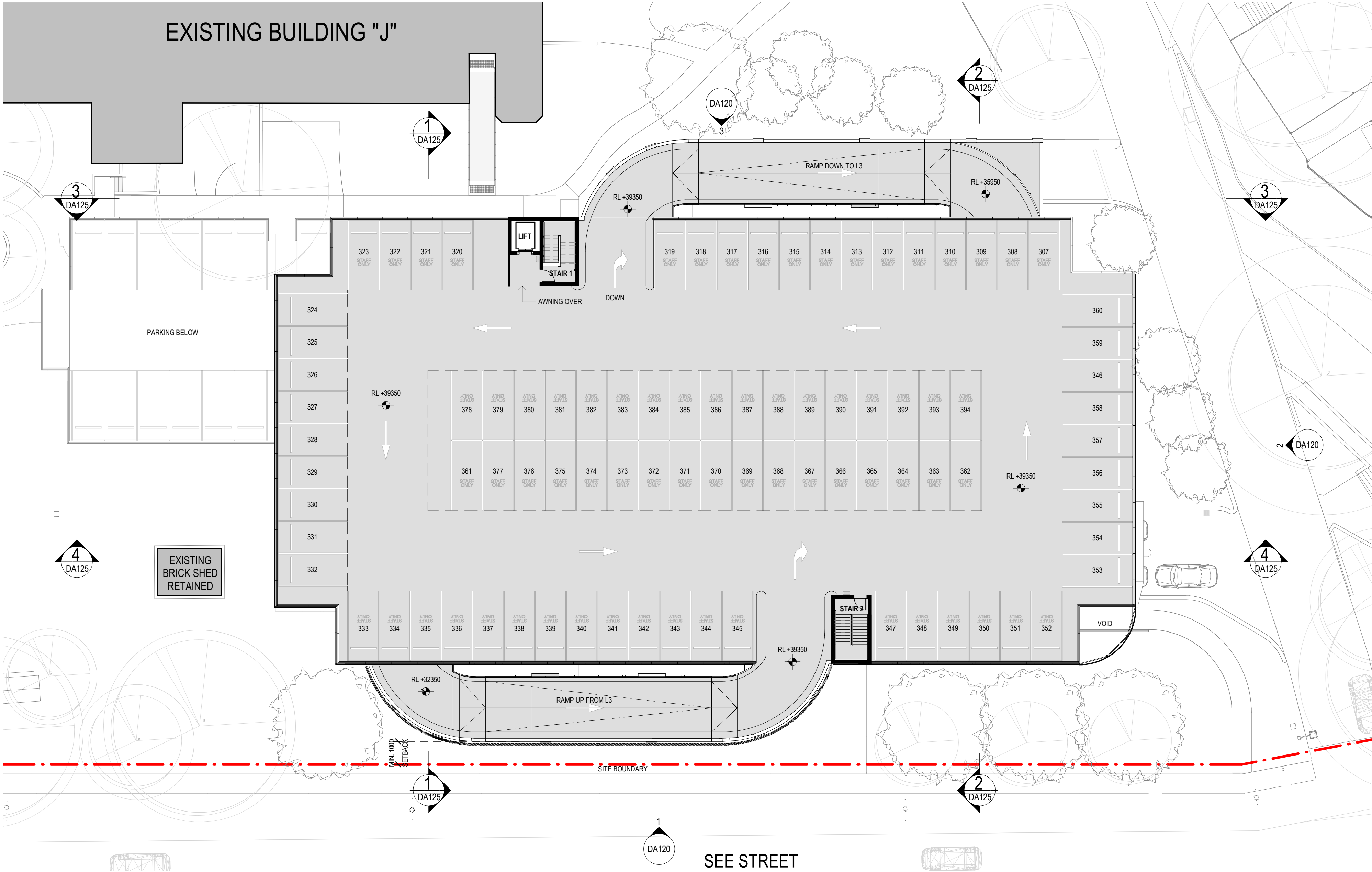
**TAFE NSW - Meadowbank
Multi-Story Car Park
Extension Works**

PRELIMINARY

LEVEL 3 FLOOR PLAN

DWG #	DA103	REV	B
SCALE @ A1	1:200		





GRAY PUKSAND

DISCLAIMER

This document may not be secure, may be corrupted in transmission or due to software incompatibility and/or may be amended or altered by third parties after leaving Gray Puksand's possession.

Gray Puksand is not responsible for and accepts no liability for such matters. Subject only to any conflicting provision within any prior binding agreement, by Gray Puksand (which agreement may also contain additional conditions relating to this document and its use):

- The content of this document is confidential and copyright in it belongs to Gray Puksand. They are permitted only to be opened, read and used by the addressee.
- All users of this document must carry out all relevant investigations and must examine, take advice as required and satisfy themselves concerning the contents, correctness and sufficiency of the attachment and its contents for their purposes.
- To the extent permitted by law, all conditions and warranties concerning this document or any use to which they may be put (whether as to quality, outcome, fitness, care, skill or otherwise) whether express or implied by statute, common law, equity, trade, custom or usage or otherwise are expressly excluded.
- Any person using or relying on this document releases indemnifies, and will keep indemnified, Gray Puksand against all claims, liabilities, loss, costs and expenses arising directly or indirectly out of or in connection with such use or reliance including without limitation any misrepresentation, error or defect in this document.

Contractors to use Architectural drawings for set out.
Contractors to check & verify all Dimensions on Site prior to Construction/Fabrication. Figured Dimensions take precedence over Scaled Dimensions.
Any Discrepancies should be immediately referred to the Architect.
All work to comply with N.C.C. Statutory Authorities & Relevant Australian Standards.

NSW Nominated Architects Scott Moylan 7147 Craig Saltmarsh 6569

HANSEN YUNCKEN



REV	DESCRIPTION	DATE
A	PRELIMINARY SSDA FINAL DRAFT	20-10-2021
B	Issued For SSDA	03-11-2021

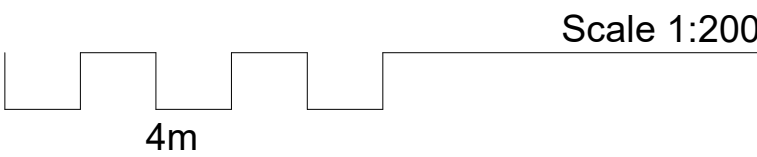
PROJECT NO	220014
DRAWN	RD
CHECKED	RD
APPROVED	BH

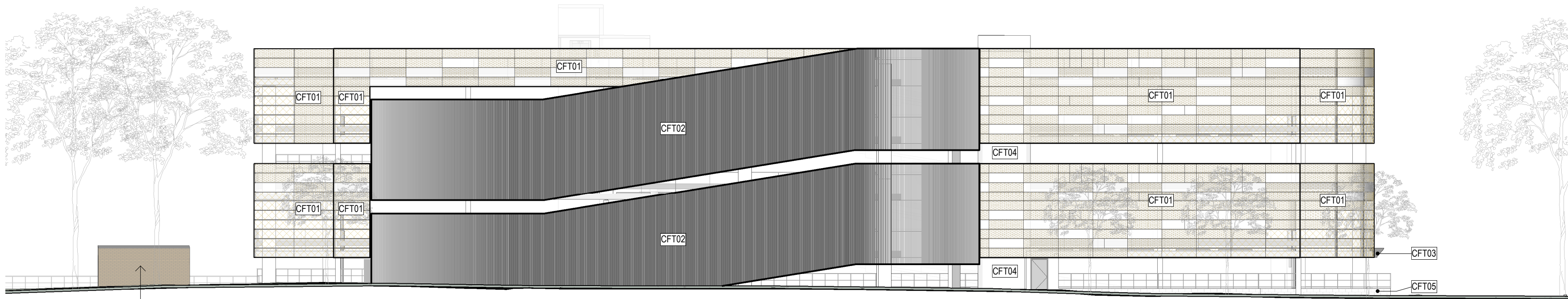
TAFE NSW - Meadowbank Multi-Story Car Park Extension Works

PRELIMINARY

LEVEL 4 FLOOR PLAN

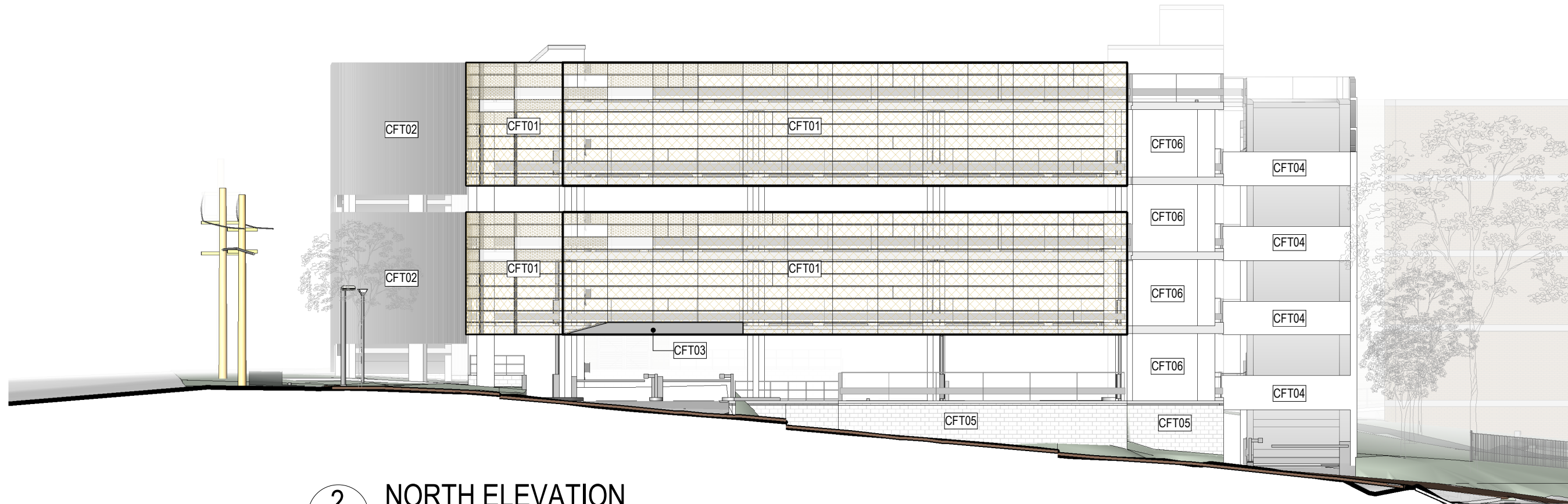
DWG #	DA104	REV	B
SCALE @ A1	1 : 200		





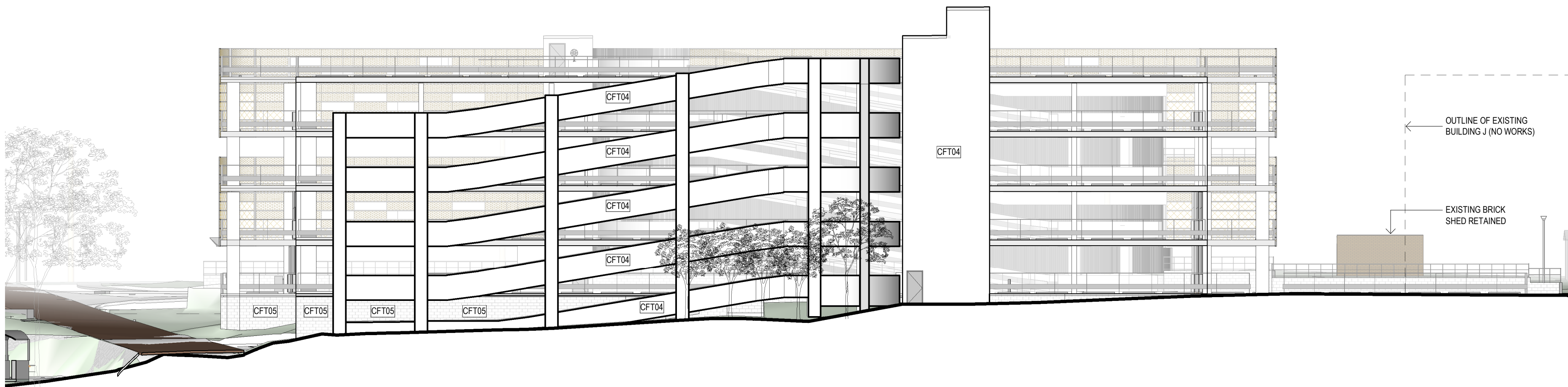
PARAPET 41150 ±500
C-L4 39350
C-L3 35950
C-L2 32550
C-L1 29150
C-GF 25750

1 EAST ELEVATION
DA100 1:200



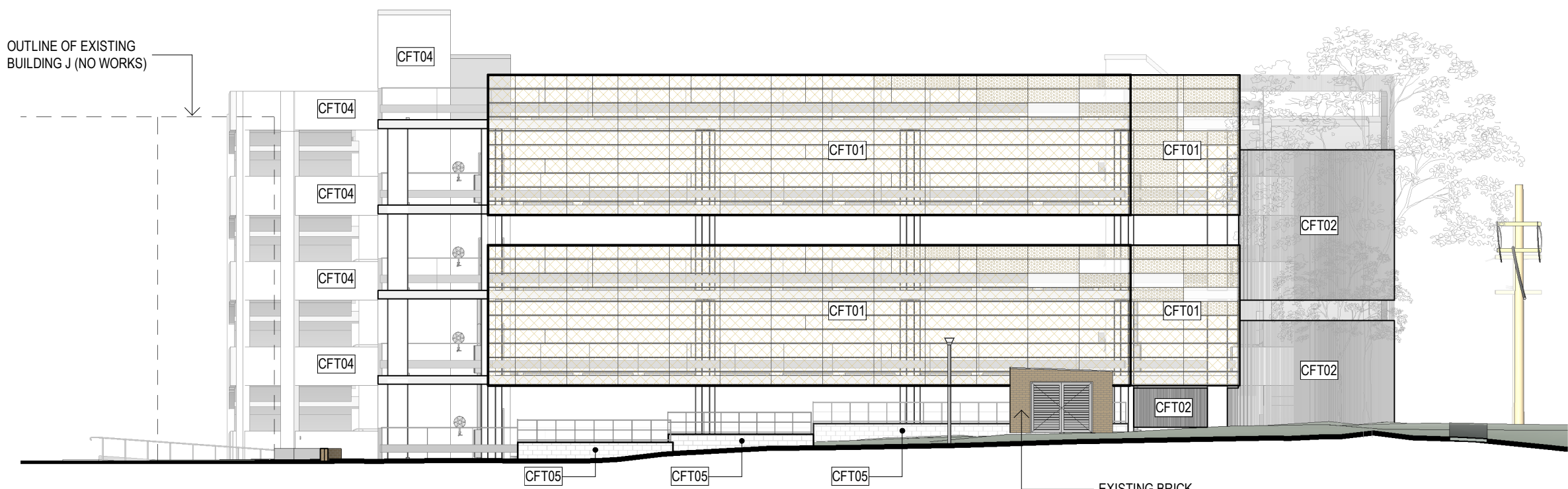
PARAPET 41150 ±500
C-L4 39350
C-L3 35950
C-L2 32550
C-L1 29150
C-GF 25750

2 NORTH ELEVATION
DA100 1:200



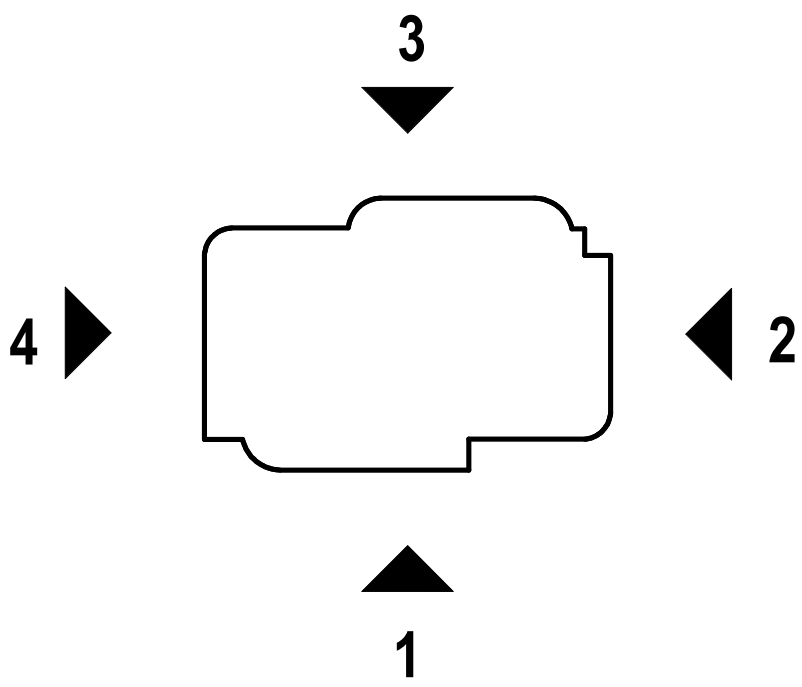
PARAPET 41150 ±500
C-L4 39350
C-L3 35950
C-L2 32550
C-L1 29150
C-GF 25750

3 WEST ELEVATION
DA100 1:200



PARAPET 41150 ±500
C-L4 39350
C-L3 35950
C-L2 32550
C-L1 29150
C-GF 25750

4 SOUTH ELEVATION
DA100 1:200



FACADE TYPE LEGEND

CFT01	PERFORATED METAL SCREEN MIN 50% PERFORATION TOTAL
CFT02	VERTICAL CLADDING BATTENS
CFT03	FOLDED METAL AWNING
CFT04	EXPOSED CONCRETE
CFT05	BLOCKWORK
CFT06	FIBRECEMENT CLADDING

GRAY PUKSAND

DISCLAIMER
This document may not be secure, may be corrupted in transmission or due to software incompatibility and/or may be amended or altered by third parties after leaving Gray Puksand's possession.
Gray Puksand is not responsible for and accepts no liability for such matters. Subject only to any conflicting provision within any prior binding agreement, by Gray Puksand (which agreement may also contain additional conditions relating to this document and its use):
1. The content of this document is confidential and copyright in it belongs to Gray Puksand. They are permitted only to be opened, read and used by the addressee.
2. All users of this document must carry out all relevant investigations and must examine, take advice as required and satisfy themselves concerning the contents, correctness and sufficiency of the attachment and its contents for their purposes.
3. To the extent permitted by law, all conditions and warranties concerning this document or any use to which they may be put (whether as to quality, outcome, fitness, care, skill or otherwise) whether express or implied by statute, common law, equity, trade, custom or usage or otherwise are expressly excluded.
4. Any person using or relying on this document releases indemnifies, and will keep indemnified, Gray Puksand against all claims, liabilities, loss, costs and expenses arising directly or indirectly out of or in connection with such use or reliance including without limitation any misrepresentation, error or defect in this document.
Contractors to use Architectural drawings for set out.
Contractors to check & verify all Dimensions on Site prior to Construction/Fabrication. Figured Dimensions take precedence over Scaled Dimensions.
Any Discrepancies should be immediately referred to the Architect.
All work to comply with N.C.C. Statutory Authorities & Relevant Australian Standards.
NSW Nominated Architects Scott Moylan 7147 Craig Saltmarsh 6569

HANSEN YUNCKEN



REV	DESCRIPTION	DATE
A	ISSUE FOR SSDA	30-04-2020
B	ISSUE FOR SSDA	11-08-2020
C	PRELIMINARY SSDA FINAL DRAFT	20-10-2021
D	Issued For SSDA	03-11-2021

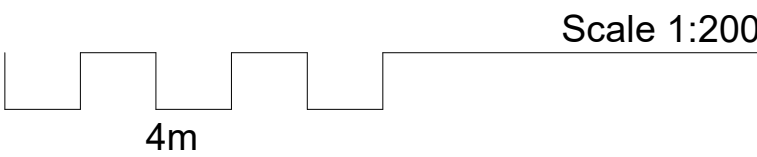
PROJECT NO	220014
DRAWN	RD / TA
CHECKED	RD
APPROVED	BH

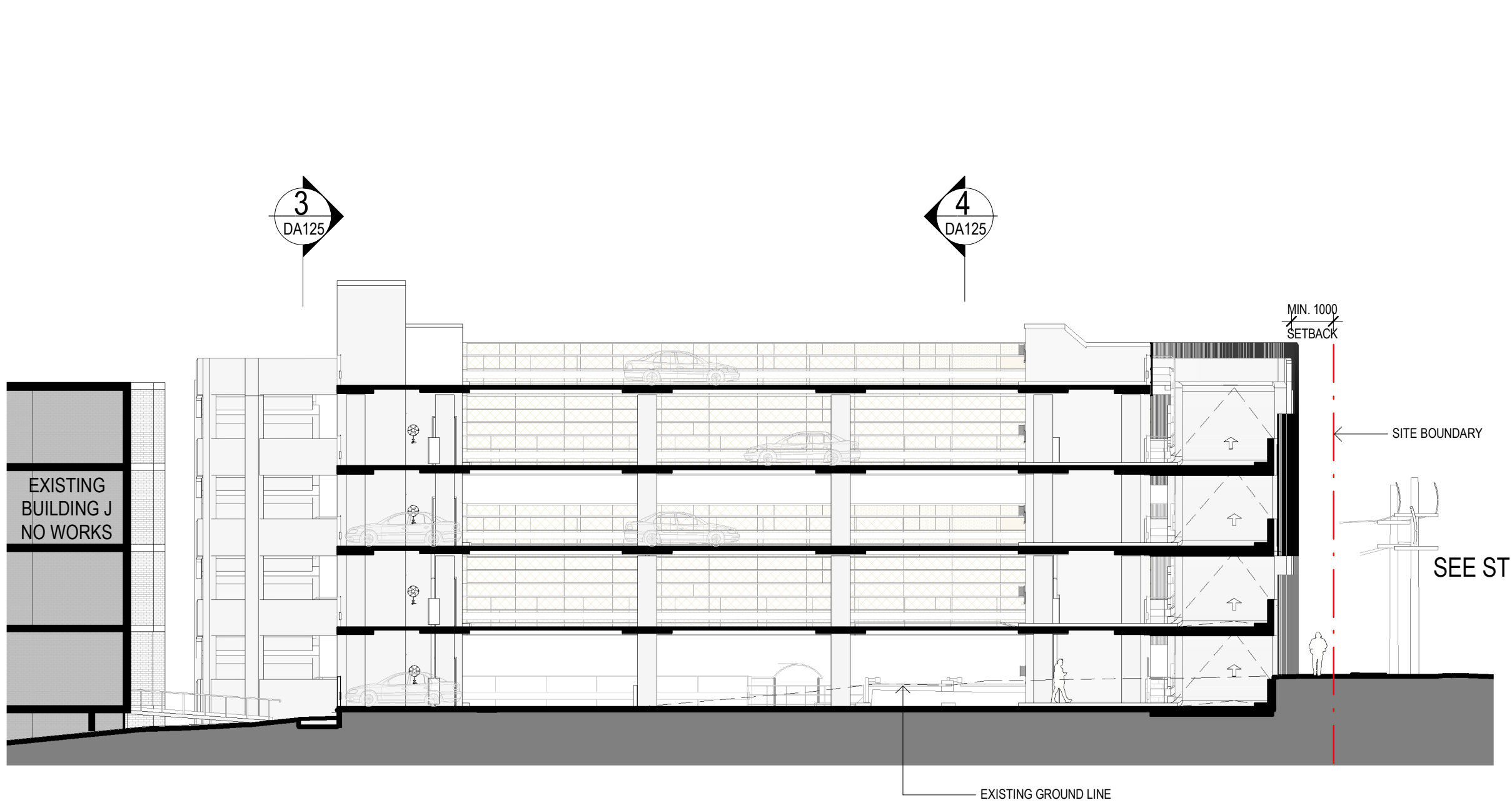
TAFE NSW - Meadowbank Multi-Story Car Park Extension Works

PRELIMINARY

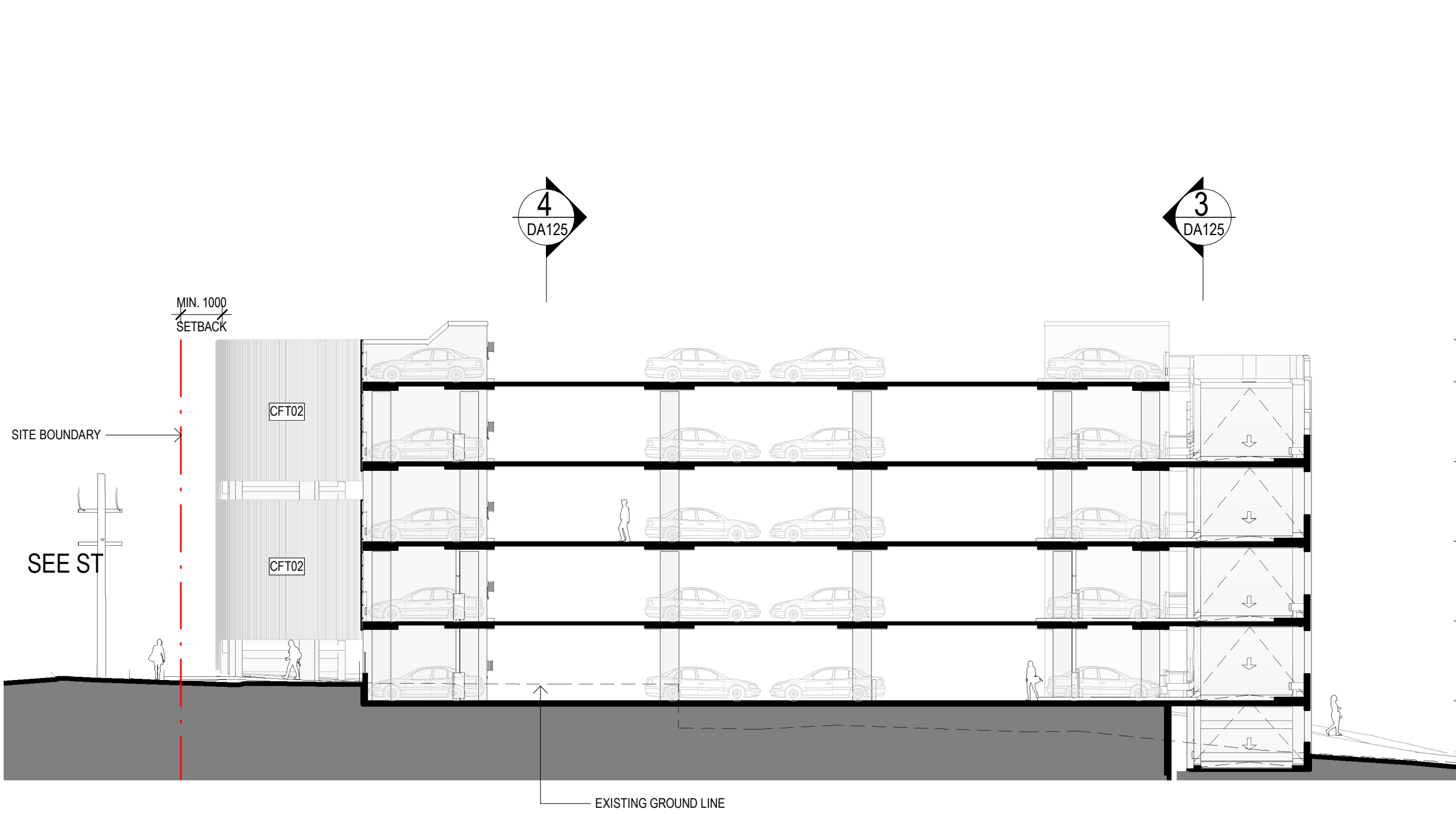
ELEVATIONS

DWG #	DA120	REV	D
SCALE @ A1	As indicated		

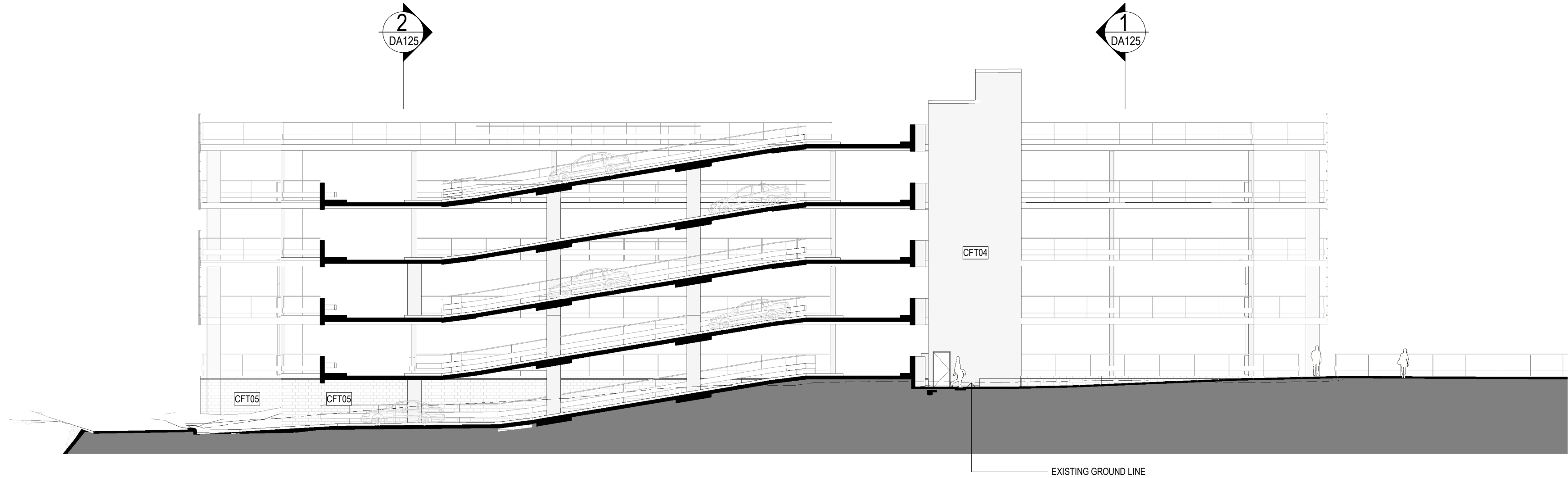




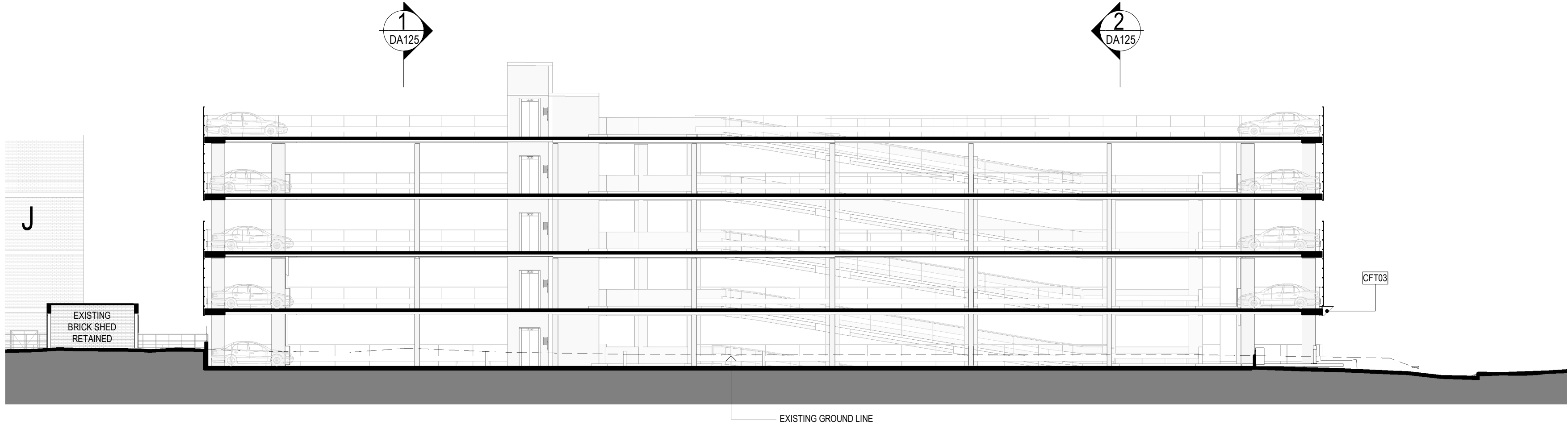
1 WEST-EAST SECTION
1 : 200



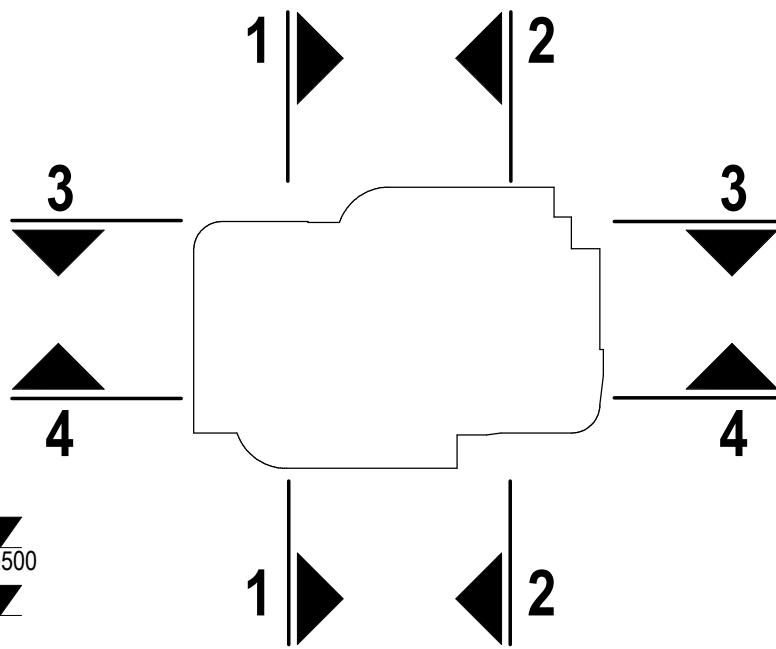
2 WEST-EAST SECTION
1 : 200



3 NORTH-SOUTH SECTION
1 : 200



4 NORTH-SOUTH SECTION
1 : 200



FAÇADE TYPE LEGEND

- CFT01 PERFORATED METAL SCREEN
MIN 50% PERFORATION TOTAL
- CFT02 VERTICAL CLADDING BATTENS
- CFT03 FOLDED METAL AWNING
- CFT04 EXPOSED CONCRETE
- CFT05 BLOCKWORK
- CFT06 FIBRECEMENT CLADDING

GRAY PUKSAND

DISCLAIMER
This document may not be secure, may be corrupted in transmission or due to software incompatibility and/or may be amended or altered by third parties after leaving Gray Puksand's possession.
Gray Puksand is not responsible for and accepts no liability for such matters. Subject only to any conflicting provision within any prior binding agreement, by Gray Puksand (which agreement may also contain additional conditions relating to this document and its use).
1. The content of this document is confidential and copyright in it belongs to Gray Puksand. They are permitted only to be opened, read and used by the addressee.
2. All users of this document must carry out all relevant investigations and must examine, take advice as required and satisfy themselves concerning the contents, correctness and sufficiency of the attachment and its contents for their purposes.
3. To the extent permitted by law, all conditions and warranties concerning this document or any use to which they may be put (whether as to quality, outcome, fitness, care, skill or otherwise) whether express or implied by statute, common law, equity, trade, custom or usage or otherwise are expressly excluded.
4. Any person using or relying on this document releases indemnifies, and will keep indemnified, Gray Puksand against all claims, liabilities, loss, costs and expenses arising directly or indirectly out of or in connection with such use or reliance including without limitation any misrepresentation, error or defect in this document.
Contractors to use Architectural drawings for set out.
Contractors to check & verify all Dimensions on Site prior to Construction/Fabrication. Figured Dimensions take precedence over Scaled Dimensions.
Any Discrepancies should be immediately referred to the Architect.
All work to comply with N.C.C. Statutory Authorities & Relevant Australian Standards.
NSW Nominated Architects Scott Moylan 7147 Craig Saltmarsh 6569

HANSEN YUNCKEN



REV	DESCRIPTION	DATE
A	ISSUE FOR SSDA	30-04-2020
B	ISSUE FOR SSDA	11-08-2020
C	PRELIMINARY SSDA FINAL DRAFT	20-10-2021
D	Issued For SSDA	03-11-2021

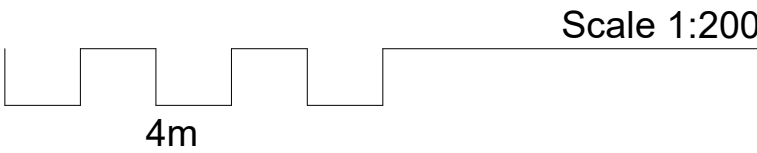
PROJECT NO	220014
DRAWN	RD / TA
CHECKED	RD
APPROVED	BH

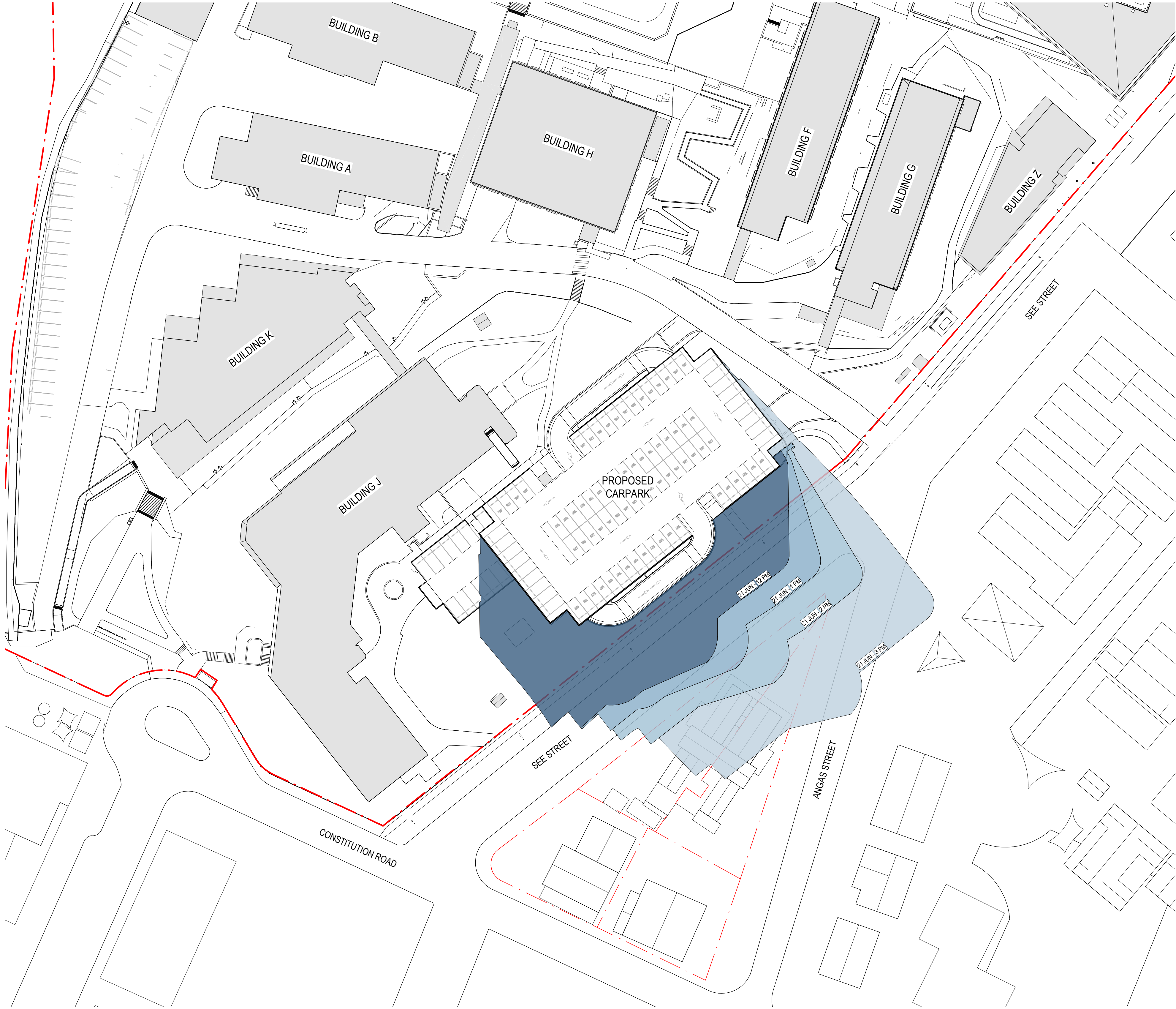
TAFE NSW - Meadowbank
Multi-Story Car Park
Extension Works

PRELIMINARY

SECTIONS

DWG #	DA125	REV	D
SCALE @ A1	As indicated		





LEGEND

- 21 JUN - 12PM
- 21 JUN - 1PM
- 21 JUN - 2PM
- 21 JUN - 3PM

GRAY PUKSAND

DISCLAIMER

This document may not be secure, may be corrupted in transmission or due to software incompatibility and/or may be amended or altered by third parties after leaving Gray Puksand's possession.

Gray Puksand is not responsible for and accepts no liability for such matters. Subject only to any conflicting provision within any prior binding agreement, by Gray Puksand (which agreement may also contain additional conditions relating to this document and its use).

- The content of this document is confidential and copyright in it belongs to Gray Puksand. They are permitted only to be opened, read and used by the addressee.
- All users of this document must carry out all relevant investigations and must examine, take advice as required and satisfy themselves concerning the contents, correctness and sufficiency of the attachment and its contents for their purposes.
- To the extent permitted by law, all conditions and warranties concerning this document or any use to which they may be put (whether as to quality, outcome, fitness, care, skill or otherwise) whether express or implied by statute, common law, equity, trade, custom or usage or otherwise are expressly excluded.
- Any person using or relying on document releases indemnifies, and will keep indemnified, Gray Puksand against all claims, liabilities, loss, costs and expenses arising directly or indirectly out of or in connection with such use or reliance including without limitation any misrepresentation, error or defect in this document.

Contractors to use Architectural drawings for set out.
Contractors to check & verify all Dimensions on Site prior to Construction/Fabrication.
Figured Dimensions take precedence over Scaled Dimensions.
Any Discrepancies should be immediately referred to the Architect.
All work to comply with N.C.C. Statutory Authorities & Relevant Australian Standards.

NSW Nominated Architects Scott Moylan 7147 Craig Saltmarsh 6569

HANSEN YUNCKEN



REV	DESCRIPTION	DATE
A	ISSUE FOR SSDA	30-04-2020
B	PRELIMINARY SSDA FINAL DRAFT	20-10-2021
C	Issued For SSDA	03-11-2021

PROJECT NO 220014
DRAWN RD
CHECKED RD
APPROVED BH



TAFE NSW - Meadowbank
Multi-Story Car Park
Extension Works

PRELIMINARY

MULTISTOREY CARPARK WINTER
SHADOW DIAGRAMS IMPACT STUDY

DWG # DA137 REV C

SCALE @ A1 1 : 500

1 MULTISTOREY CARPARK - WINTER STUDY
C2000 1 : 500

LAYOUT BASED ON NEARMAP IMAGERY
DATED 06/08/21