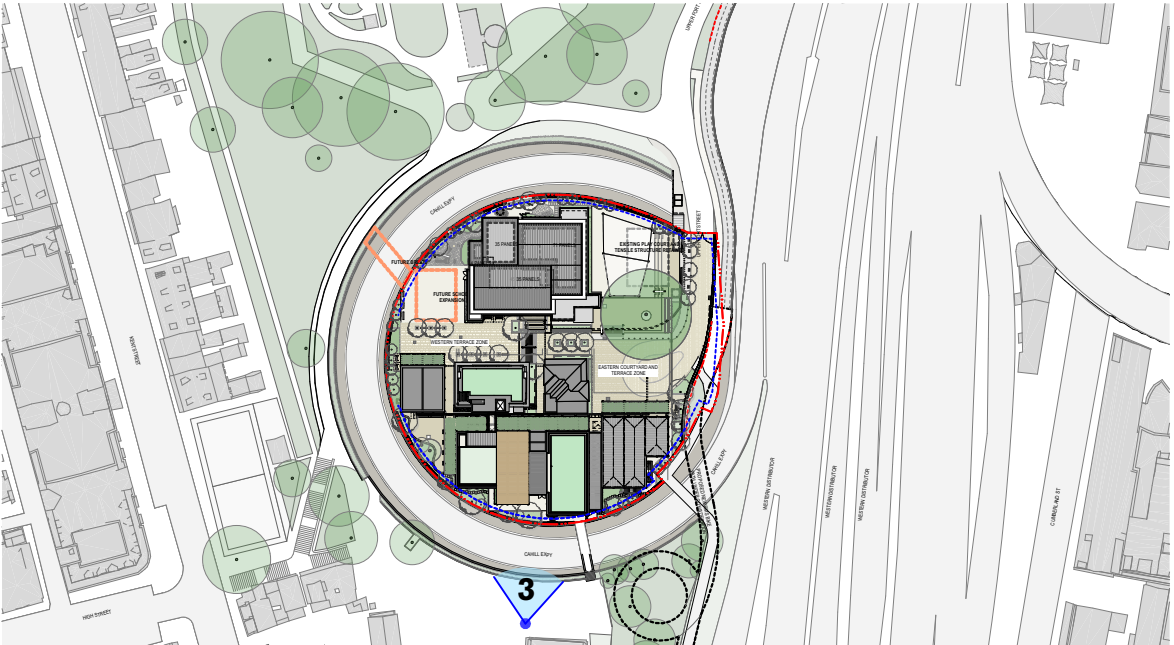
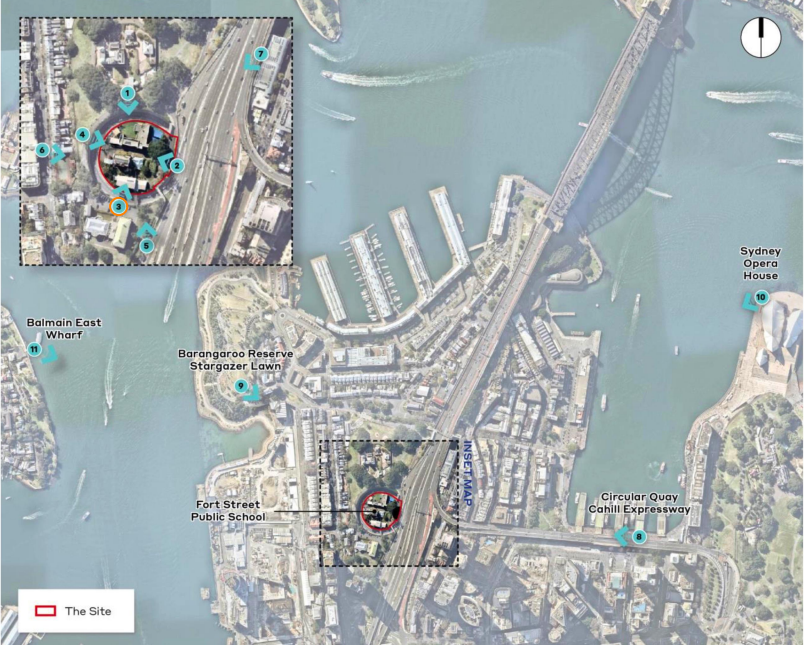


VIEWPOINT 3



VIEWPOINT LEGEND



VIEWPOINT LEGEND - LARGER CONTEXT



PHOTO - EXISTING



3D MODEL VIEW - PROPOSED

3D Model camera positions from Survey  
Terrain/Context buildings modelled indicatively  
Viewpoint 1-6 = 16mm focal length  
Viewpoint 7-11 = 35mm focal length

- EXISTING ENVELOPE
- PROPOSED ENVELOPE

**NOTE:** 35mm considered to capture perspective similar to the human eye.  
A 16mm lens has been used when shorter viewing distance warrants a wider field of view.  
The height of camera is 1.6m above ground level  
Refer to ETHOS URBAN Visual Impact Assessment Report