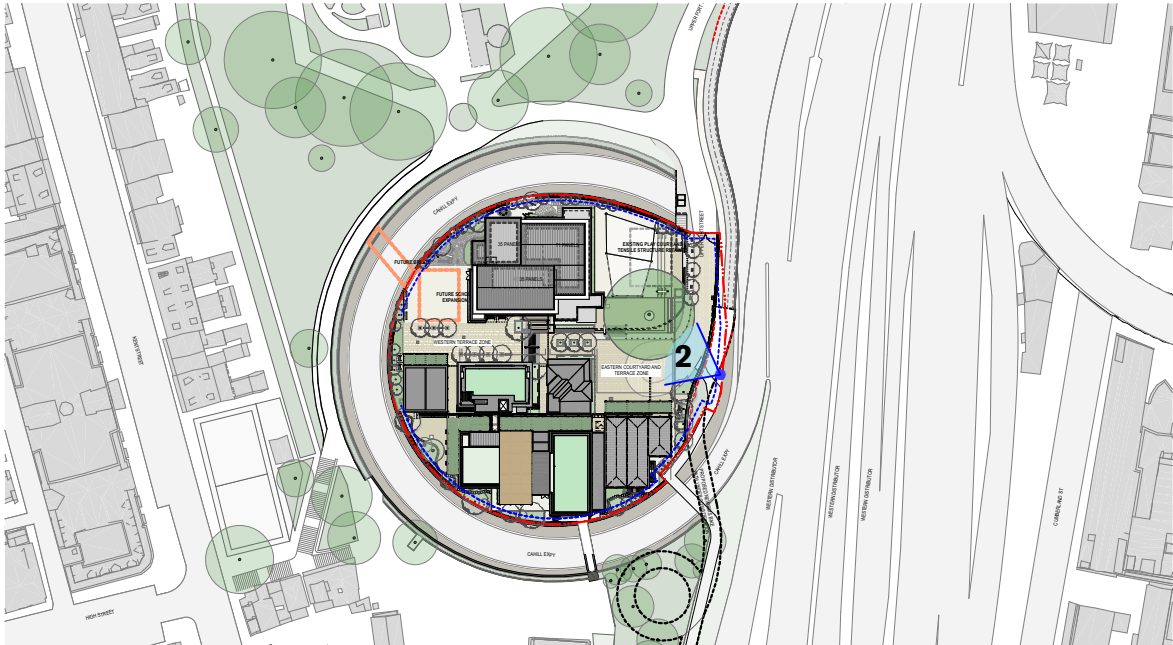
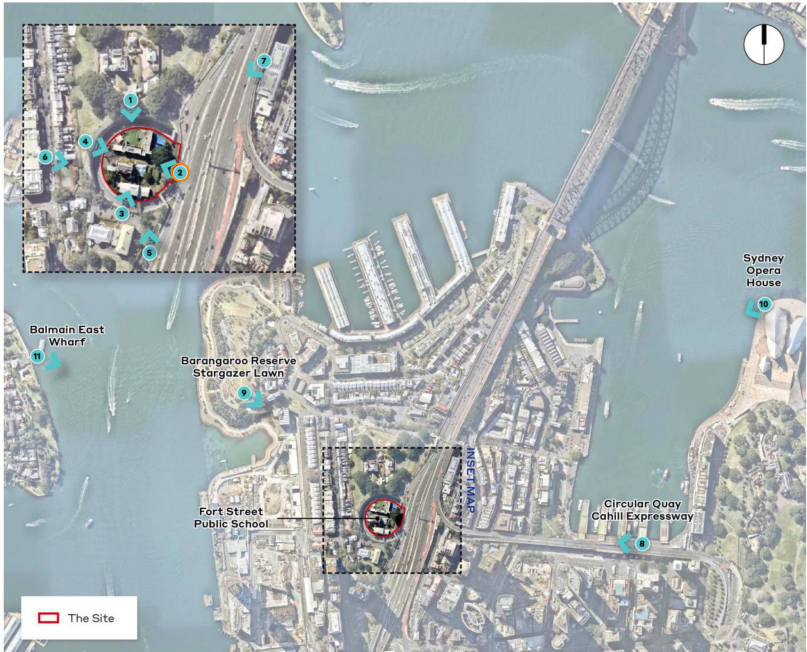


VIEWPOINT 2



VIEWPOINT LEGEND



VIEWPOINT LEGEND - LARGER CONTEXT



PHOTO - EXISTING



3D MODEL VIEW - PROPOSED

3D Model camera positions from Survey
Terrain/Context buildings modelled indicatively
Viewpoint 1-6 = 16mm focal length
Viewpoint 7-11 = 35mm focal length

--- EXISTING ENVELOPE
--- PROPOSED ENVELOPE

NOTE: 35mm considered to capture perspective similar to the human eye.
A 16mm lens has been used when shorter viewing distance warrants a wider field of view.
The height of camera is 1.6m above ground level
Refer to ETHOS URBAN Visual Impact Assessment Report