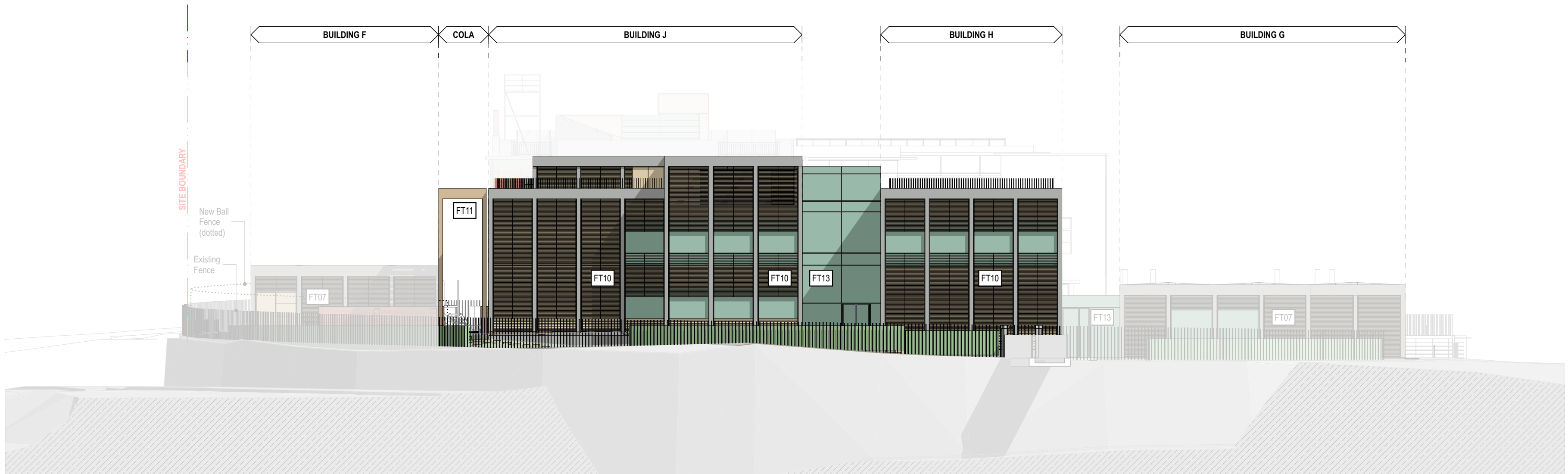


The volumes of Building J and H are divided into several smaller parts. The spaces between these parts are proposed to be detailed so as to be largely transparent and lightweight. The resultant solid homebase forms and more transparent spaces between are rhythms that respond to the existing built forms and interstitial zones between that create view corridors down through the site and frame views to the context beyond.

Feature structural frames are made of exposed concrete and are infilled with metal windows and aluminium batten panels. The robust vertical forms respond to the verticality of the larger heritage buildings on the site and create a grid-like pattern to subtly distinguish themselves from the masonry forms. The horizontal pattern of aluminium profiled louvres ensures enough shading for the Homebases and circulation spaces inside.



**SOUTH ELEVATION**



**WEST ELEVATION**



## FACADE TYPE EXTENT

