

Fort Street Public School

Observatory Hill Upper Fort Street Sydney NSW 2000

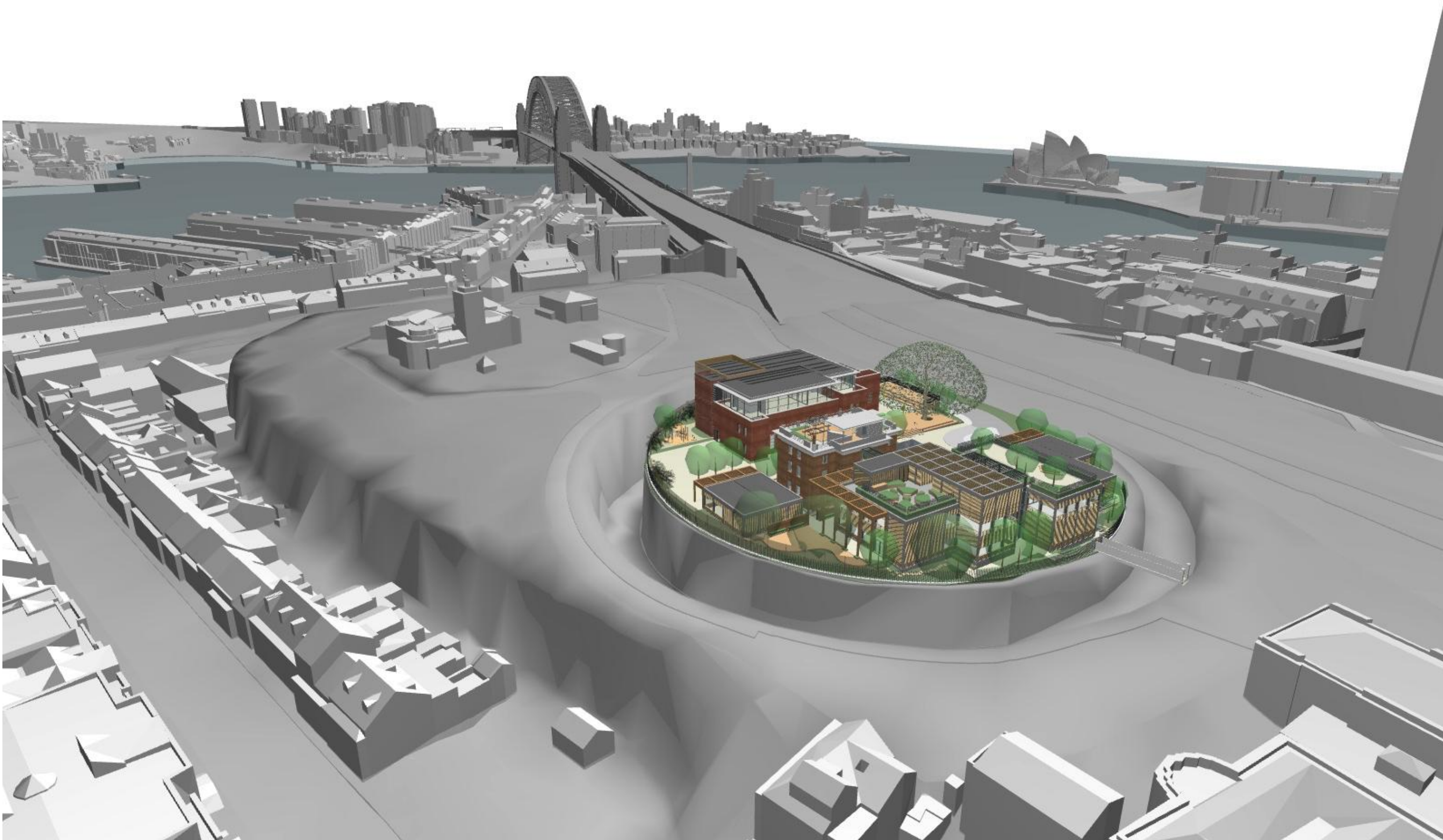
GENERAL NOTES

ALL DIMENSIONS AND EXISTING CONDITIONS
◦ SHALL BE CHECKED AND VERIFIED BY THE CONTRACTOR BEFORE PROCEEDING WITH THE WORK.
◦ ALL LEVELS RELATIVE TO 'AUSTRALIAN HEIGHT DATUM'.
◦ DO NOT SCALE DRAWINGS.
◦ USE FIGURED DIMENSIONS ONLY.

legend

DRAWING LIST - SSDA

| Layout ID | Layout Name | Rev ID | Layout ID | Layout Name | Rev ID | Layout ID | Layout Name | Rev ID |
|-----------|---|--------|-----------|--|--------|-----------|---|--------|
| DA-1001 | Cover Sheet | SSDA01 | DA-5005 | Detailed Areas - MET Elevator shaft | SSDA01 | DA-7005 | Visual Impact Assessment - Viewpoint 5 | SSDA01 |
| DA-1101 | Location Plan - Existing | SSDA01 | DA-5006 | Detailed Areas - FSPS Existing Hall Skylight | SSDA01 | DA-7006 | Visual Impact Assessment - Viewpoint 6 | SSDA01 |
| DA-1201 | Site Plan Existing | SSDA01 | DA-5007 | Messenger's Cottage | SSDA01 | DA-7007 | Visual Impact Assessment - Viewpoint 7 | SSDA01 |
| DA-1202 | Site Analysis | SSDA01 | DA-5901 | FT01 / FT02 Building A | SSDA01 | DA-7008 | Visual Impact Assessment - Viewpoint 8 | SSDA01 |
| DA-1211 | Site Plan Proposed | SSDA01 | DA-5902 | FT03 Building D | SSDA01 | DA-7009 | Visual Impact Assessment - Viewpoint 9 | SSDA01 |
| DA-2001 | Proposed Plan - Lower Ground 1 | SSDA01 | DA-5903 | FT04 N / FT04 W Building D | SSDA01 | DA-7010 | Visual Impact Assessment - Viewpoint 10 | SSDA01 |
| DA-2002 | Proposed Plan - Ground | SSDA01 | DA-5904 | FT05 / FT06 Building C | SSDA01 | DA-7011 | Visual Impact Assessment - Viewpoint 11 | SSDA01 |
| DA-2003 | Proposed Plan - Level 1 | SSDA01 | DA-5905 | FT07 Building F/G | SSDA01 | DA-8001 | Landscape Design Plan | SSDA01 |
| DA-2004 | Proposed Plan - Level 2 | SSDA01 | DA-5906 | FT08 / FT09 / FT13 N Building M | SSDA01 | DA-8002 | Landscape Ground Floor | SSDA01 |
| DA-2005 | Proposed Plan - Roof | SSDA01 | DA-5907 | FT10 Building J/H | SSDA01 | DA-8003 | Landscape Roof Plan | SSDA01 |
| DA-2101 | Demolition Plan - Ground | SSDA01 | DA-5908 | FT11 C.O.L.A. | SSDA01 | DA-8004 | Tree Management Plan | SSDA01 |
| DA-2102 | Demolition Plan - Level 1 | SSDA01 | DA-5909 | FT12 Services Enclosure | SSDA01 | DA-8101 | Landscape Sections | SSDA01 |
| DA-2103 | Demolition Plan - Level 2 | SSDA01 | DA-5910 | FT13 Glass Infill Building J/HG | SSDA01 | DA-9002 | Functional Area Schedule | SSDA01 |
| DA-2104 | Demolition Plan - Roof | SSDA01 | DA-6001 | Shadow Diagrams - 21 June 9am-12pm | SSDA01 | DA-9003 | Outdoor Area Schedule | SSDA01 |
| DA-2105 | Services Excavation On Demolition Plan | SSDA01 | DA-6002 | Shadow Diagrams - 21 June 1pm-4pm | SSDA01 | DA-9011 | Exterior Finishes Samples | SSDA01 |
| DA-3001 | Elevations North East | SSDA01 | DA-6003 | Shadow Diagrams - 21 Dec 9am-12pm | SSDA01 | | | |
| DA-3002 | Elevations South West | SSDA01 | DA-6004 | Shadow Diagrams - 21 Dec 1pm-4pm | SSDA01 | | | |
| DA-4001 | Sections 1 | SSDA01 | DA-6005 | Shadow Diagrams - 21 March 9am-12pm | SSDA01 | | | |
| DA-4002 | Sections 2 | SSDA01 | DA-6006 | Shadow Diagrams - 21 March 1pm-4pm | SSDA01 | | | |
| DA-4003 | Sections 3 | SSDA01 | DA-6007 | Shadow Diagrams - 23 Sept 9am-12pm | SSDA01 | | | |
| DA-4004 | Sections 4 | SSDA01 | DA-6008 | Shadow Diagrams - 23 Sept 1pm-4pm | SSDA01 | | | |
| DA-5001 | Detailed Areas - Heritage Wall | SSDA01 | DA-7001 | Visual Impact Assessment - Viewpoint 1 | SSDA01 | | | |
| DA-5002 | Detailed Areas - Heritage Wall Details | SSDA01 | DA-7002 | Visual Impact Assessment - Viewpoint 2 | SSDA01 | | | |
| DA-5003 | Detailed Areas - Bradfield Mechanical Exhaust | SSDA01 | DA-7003 | Visual Impact Assessment - Viewpoint 3 | SSDA01 | | | |
| DA-5004 | Detailed Areas - Surgeon's Cottage | SSDA01 | DA-7004 | Visual Impact Assessment - Viewpoint 4 | SSDA01 | | | |



SSDA01 18/12/19 State Significant Development Application AWY DB

rev date name by chk

fjmt studio architecture interiors landscape urban community

sydney melbourne uk

Level 5, 70 King Street t +61 2 9251 7077 w fjmtstudio.com

fjmt

project
Fort Street Public School
Observatory Hill
Sydney NSW 2000

title
General
Cover Sheet

scale first issued 23/9/19

project code sheet no. revision
FSS DA-1001 SSDA01

State Significance Development Application