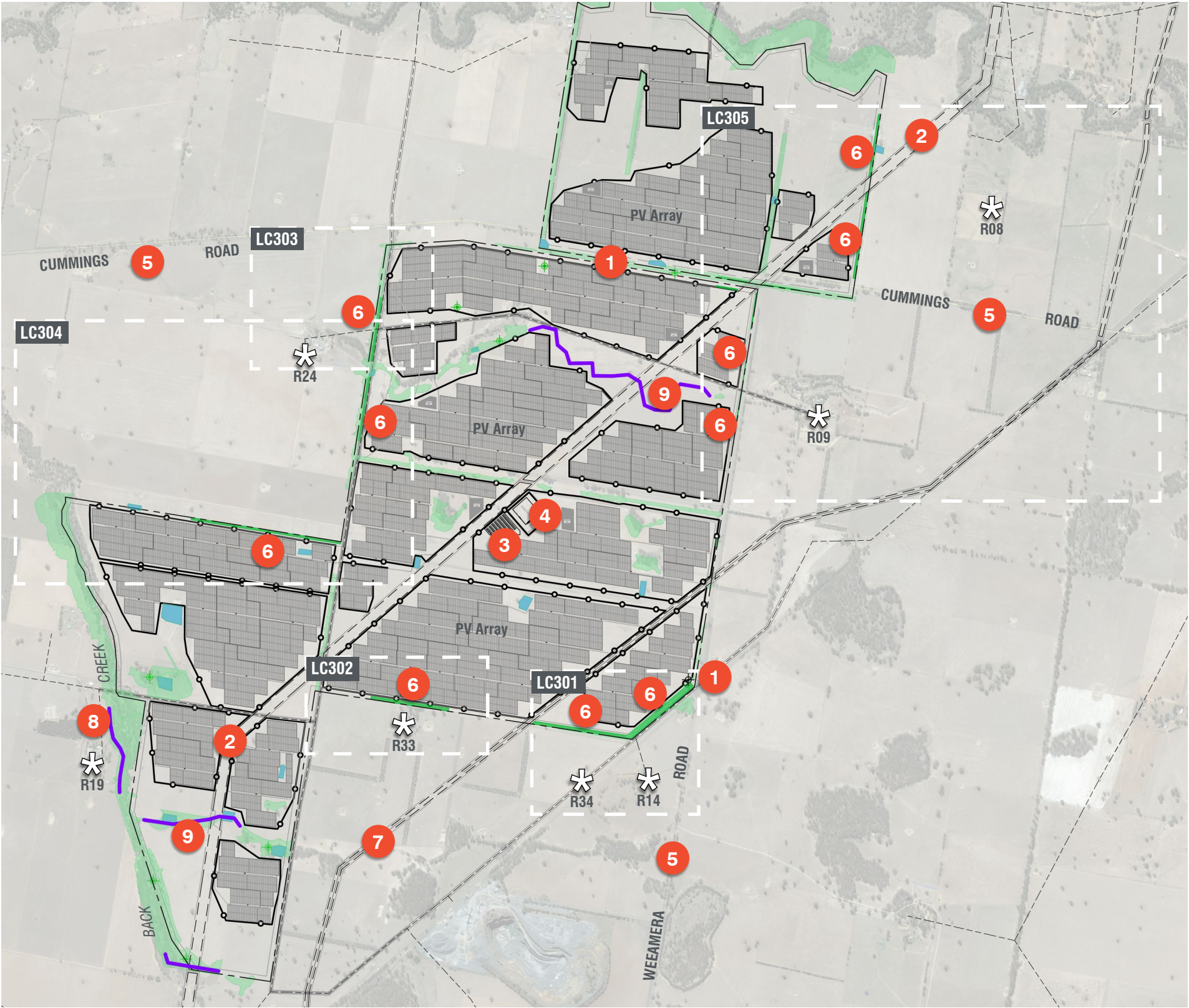


CULCAIRN SOLAR FARM

CUMMINGS ROAD / WEEAMERA ROAD – CULCAIRN

KEY

- 1 Site access
- 2 Existing transmission lines
- 3 Battery Energy Storage System (BESS)
- 4 Substation
- 5 Public roads
- 6 Proposed Vegetation Buffer
- 7 Gas Easement
- 8 Supplementary rehabilitation and revegetation to Back Creek
- 9 Supplementary planting to existing ephemeral drainage line to increase biodiversity and connectivity
- Existing scattered vegetation to be retained
- Proposed vegetation buffer
- Existing dams to be retained
- Existing adjacent receiver
- 11kV distribution lines
- Proposed site fencing
- Supplementary planting areas



CULCAIRN SOLAR FARM

CUMMINGS ROAD / WEEAMERA ROAD – CULCAIRN

KEY

- 1 Site access
- 2 South east vegetation buffer 40m width + 15m APZ
- 3 Southern vegetation buffer 20m width + 10m APZ
- 4 Gas Easement
- Existing scattered vegetation to be retained
- Proposed vegetation buffer
- Existing adjacent receiver
- 11kV distribution lines

Revegetation species to include the following species (refer Indicative Plant Schedule LC306)

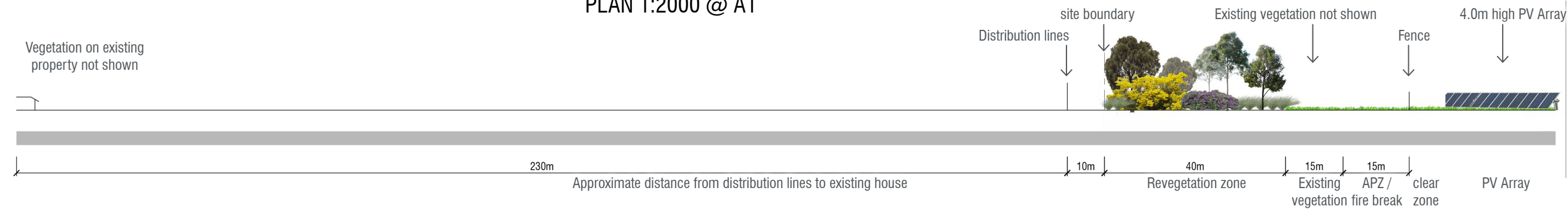
Large evergreen trees e.g.
Eucalyptus blakelyi (Blakely's Red Gum)
Eucalyptus melliodora (Yellow Box)
Eucalyptus polyanthemos (Red Box)

Medium evergreen trees e.g.
Acacia dealbata (Silver Wattle)
Acacia implexa (Lightwood)
Allocasuarina luehmannii (Bulloak)
Allocasuarina verticillata (Drooping Sheoak)

Shrubs and groundcovers e.g.
Acacia acinacea (Gold-dust Wattle)
Acacia rubida (Red-stemmed Wattle)
Bursaria spinosa (Sweet Bursaria)
Dodonea viscosa subsp. *angustissima* (Narrow-leaf Hop-bush)



PLAN 1:2000 @ A1

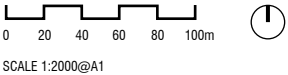


SECTION A-A' 1:500 @ A1

LANDSCAPE CONCEPT DESIGN

DETAIL PLAN 1

DRG NO.	REV	DATE	DES/DOC	AUTH	AMENDMENT
307415 LC301	C	05/05/2020	SLM/SME	SME	ISSUE FOR APPROVAL




CUMMINGS ROAD / WEEAMERA ROAD – CULCAIRN

1 South boundary vegetation buffer 20m width + 10m APZ

2 Existing transmission lines

Existing scattered vegetation to be retained



Proposed vegetation buffer

 Existing adjacent receiver



11kV distribution lines

Large evergreen trees e.g.

Eucalyptus blakelyi (Blakely's Red Gum)

Eucalyptus melliodora (Yellow Box)

Eucalyptus polyanthemos (Red Box)

Medium evergreen trees e.g.

Acacia dealbata (Silver Wattle)

Acacia implexa (Lightwood)

Allocasuarina luehmannii (Bulloak)

Allocasuarina verticillata (Drooping Sheoak)

Shrubs and groundcovers e.g.

Acacia acinacea (Gold-dust Wattle)

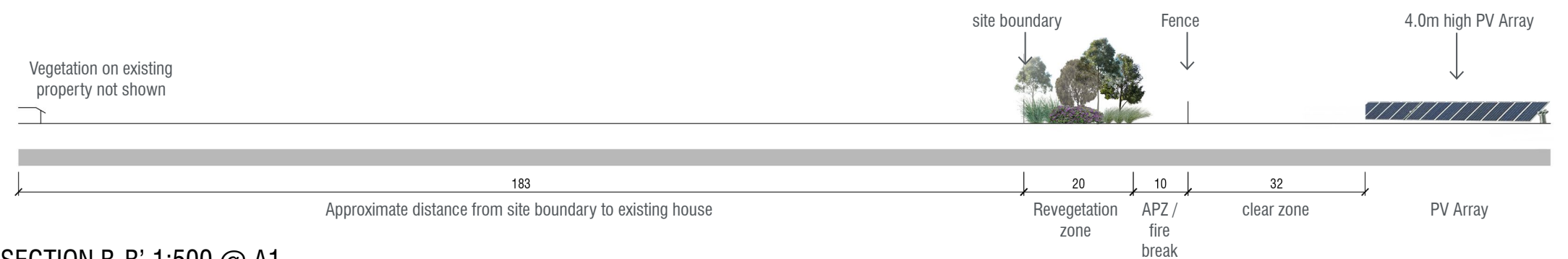
Acacia rubida (Red-stemmed Wattle)

Bursaria spinosa (Sweet Bursaria)

Dodonea viscosa subsp. *angustissima* (Narrow-leaf Hop-bush)

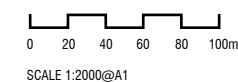


PLAN 1:2000 @ A1



SECTION B-B' 1:500 @ A1


DRG NO.	REV	DATE	DES/DOC	AUTH	AMENDMENT
307415 LC302	C	05/05/2020	SLM/SME	SME	ISSUE FOR APPROVAL



spiire

CUMMINGS ROAD / WEEAMERA ROAD – CULCAIRN

1 West boundary vegetation buffer 20m width to augment existing scattered vegetation



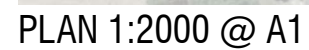
Proposed vegetation buffer

 Existing adjacent receiver



11kV distribution lines

Dodonea viscosa subsp. *angustissima* (Narrow-leaf Hop-bush)



Revegetation area along western boundary comprising a variety of indigenous tree, shrub, grasses and ground cover species to provide layered vegetation for visual amenity and habitat _____

Site boundary

— Existing
vegetation not
shown

Fence

4.0m high PV Array

500

Approximate distance from site boundary to existing house

Revegetation zone

75

↓ 25

APZ /
fire break

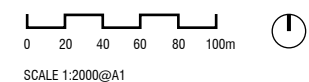
25 ↓

clear one PV Array

LANDSCAPE CONCEPT DESIGN

DETAIL PLAN 3

DRG NO.	REV	DATE	DES/DOC	AUTH	AMENDMENT
307415 LC303	C	05/05/2020	SLM/SME	SME	ISSUE FOR APPROVAL



spiire

CULCAIRN SOLAR FARM

CUMMINGS ROAD / WEEAMERA ROAD – CULCAIRN

KEY

- 1

West boundary vegetation buffer 20m width to augment existing scattered vegetation
- 2

North boundary vegetation buffer 15m width + 10m APZ
- Existing scattered vegetation to be retained
- Proposed vegetation buffer
- Existing dams to be retained
- Existing adjacent receiver
- 11kV distribution lines

Revegetation species to include the following species (refer Indicative Plant Schedule LC306)

Large evergreen trees e.g.
Eucalyptus blakelyi (Blakely’s Red Gum)
Eucalyptus melliodora (Yellow Box)
Eucalyptus polyanthemos (Red Box)

Medium evergreen trees e.g.
Acacia dealbata (Silver Wattle)
Acacia implexa (Lightwood)
Allocasuarina luehmannii (Bulloak)
Allocasuarina verticillata (Drooping Sheoak)

Shrubs and groundcovers e.g.
Acacia acinacea (Gold-dust Wattle)
Acacia rubida (Red-stemmed Wattle)
Bursaria spinosa (Sweet Bursaria)
Dodonea viscosa subsp. *angustissima* (Narrow-leaf Hop-bush)



DRG NO.	REV	DATE	DES/DOC	AUTH	AMENDMENT
307415 LC304	C	05/05/2020	SLM/SME	SME	ISSUE FOR APPROVAL



CULCAIRN SOLAR FARM

CUMMINGS ROAD / WEEAMERA ROAD – CULCAIRN

KEY

- 1

East boundary vegetation buffer 15m width
- 2

Existing transmission lines
- 3

Cummings Road vegetation buffer (north side) 5m width to augment existing scattered vegetation
- 4

Cummings Road vegetation buffer (north side) 10m width to augment existing scattered vegetation
- 5

Cummings Road vegetation buffer (south side) 10m width
- 6

Eastern boundary vegetation buffer 5m width
- 7

Eastern boundary vegetation buffer 5m width
- Existing scattered vegetation to be retained
- Proposed vegetation buffer
- Existing dams to be retained
- *

Existing adjacent receiver
- 11kV distribution lines

Revegetation species to include the following species (refer Indicative Plant Schedule LC306)

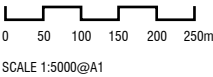
Large evergreen trees e.g.
Eucalyptus blakelyi (Blakely's Red Gum)
Eucalyptus melliodora (Yellow Box)
Eucalyptus polyanthemos (Red Box)

Medium evergreen trees e.g.
Acacia dealbata (Silver Wattle)
Acacia implexa (Lightwood)
Allocasuarina luehmannii (Bullock)
Allocasuarina verticillata (Drooping Sheoak)

Shrubs and groundcovers e.g.
Acacia acinacea (Gold-dust Wattle)
Acacia rubida (Red-stemmed Wattle)
Bursaria spinosa (Sweet Bursaria)
Dodonea viscosa subsp. *angustissima* (Narrow-leaf Hop-bush)



DRG NO.	REV	DATE	DES/DOC	AUTH	AMENDMENT
307415 LC305	C	05/05/2020	SLM/SME	SME	ISSUE FOR APPROVAL



CULCAIRN SOLAR FARM

CUMMINGS ROAD / WEEAMERA ROAD – CULCAIRN

Districts: **Walla Walla; Bowna - Jindera; Albury & Yambula**

Map showing the catchment boundary and surrounding areas including Walla Walla, Bowna - Jindera, Albury, and Yambula. Key features include the Hume River, Lake Hume, and various roads like Highway 1, Highway 2, and Highway 3. A scale bar indicates 0 to 10km.

Note: For general re-planting (creeksides; windbreaks etc.), select 50% trees and at least 50% shrubs. If enhancing sites with remnant trees, select shrubs only and allow trees to regenerate. Additions of locally native species for this list are gratefully accepted. Contact your local Vegetation Management Officer at DLWC.

General Native Vegetation Profile: Walla Walla District

LANDFORM	Flats and low country		Rising country & gently undulating hills		Rocky outcrop	
VEGETATION TYPE	Box woodland - Yellow Box & Grey Box. Blakely's Red Gum woodland.		White Box woodland		Dwyer's Red Gum woodland with Currawang & Long-leaf Box; Red Stringybark dry forest.	
GEOLOGY & SOILS	Riverine deposits of clay, silt, sand & gravel. Alluvial loams & grey & brown clays.		Mainly residual & colluvial deposits from underlying granite. Red and yellow earths.		Residual and colluvial deposits from underlying granite. Sandy granite soils.	
LOCATION EXAMPLE	Creekline country: Billabong; Petries; Back & Middle.		Rising country SE of Walla Walla		Stringybark Hill (NW of Gerogery)	
TREES > 8 m	<i>Acacia dealbata</i> <i>Allocasuarina luehmannii</i> <i>Eucalyptus albens</i> <i>E. blakelyi</i> + <i>E. bridgesiana</i> + <i>E. camaldulensis</i> <i>E. melliodora</i> <i>E. microcarpa</i> + creeklines	Silver Wattle Bullock White Box Blakely's Red Gum Apple Box River Red Gum Yellow Box Grey Box	<i>Acacia dealbata</i> <i>A. implexa</i> <i>Acacia penninervis</i> <i>Brachychiton populneus</i> <i>Callitris glaucophylla</i> <i>Eucalyptus albens</i> <i>E. blakelyi</i> <i>E. dwyeri</i> <i>E. melliodora</i> <i>E. microcarpa</i> <i>E. polyanthemus</i> <i>Hakea tephrosperma</i> <i>Pittosporum angustifolium</i>	Silver Wattle Hickory Wattle/Lightwood Hickory Wattle Kurrajong White Cypress Pine White Box Blakely's Red Gum Dwyer's Red Gum Yellow Box Grey Box Red Box Hooked Needlewood Butterbush	<i>Acacia doratoxylon</i> <i>A. implexa</i> <i>Allocasuarina verticillata</i> <i>Brachychiton populneus</i> <i>Callitris endlicheri</i> <i>C. glaucophylla</i> * <i>Eucalyptus albens</i> * <i>E. blakelyi</i> <i>E. dwyeri</i> <i>E. goniocalyx</i> # <i>E. macrohyncha</i> <i>E. nortonii</i> * <i>E. polyanthemus</i> <i>Exocarpos cupressiformis</i> * Mainly slopes of rocky outcrop # Mainly SE aspect	Currawang Hickory Wattle Drooping Sheoak Kurrajong Black Cypress Pine White Cypress Pine White Box Blakely's Red Gum Dwyer's Red Gum Long-leaf Box Red Stringybark Silver Bundy Red Box Native Cherry
SHRUBS 1.5 - 8 m	<i>Acacia acinacea</i> <i>A. montana</i> <i>A. paradoxa</i> <i>A. pycnantha</i> <i>Bursaria spinosa</i> + <i>Callistemon sieberi</i> <i>Eutaxia microphylla</i> + Billabong Creek	Gold-dust Wattle Mallee Wattle Kangaroo Thorn Golden Wattle Sweet Bursaria River Bottlebrush Mallee Bush Pea	<i>Acacia acinacea</i> <i>A. montana</i> <i>A. pycnantha</i> <i>A. rubida</i> <i>Bursaria spinosa</i> <i>Eutaxia microphylla</i> <i>Indigofera adesmiifolia</i>	Gold-dust Wattle Mallee Wattle Golden Wattle Red-stemmed Wattle Sweet Bursaria Mallee Bush Pea Tick Indigo	<i>Acacia rubida</i> <i>A. verniciflua</i> <i>Correa glabra</i> <i>C. reflexa</i> subsp. <i>reflexa</i> <i>Dillwynia</i> spp. <i>Dodonaea viscosa</i> subsp. <i>angustissima</i> <i>Indigofera australis</i> <i>Pultenaea cunninghamii</i>	Red-stemmed Wattle Varnish Wattle Rock Correa Common Correa Parrot-pea Narrow-leaf Hop-bush Austral Indigo Grey Bush-pea
GROUND COVERS	<i>Austrostipa</i> spp. - Spear Grass <i>Bothriochloa macra</i> - Red-leg Grass <i>Calotis cuneifolia</i> - Purple Burr-daisy <i>Carex</i> spp. - Sedge <i>Danthonia</i> spp. - Wallaby Grass <i>Dianella revoluta</i> - Spreading Flax-lily <i>Geranium</i> spp. - Cranesbill <i>Lomandra filiformis</i> - Wattle Mat-rush <i>Microlaena stipoides</i> - Weeping Grass	+ <i>Phragmites australis</i> - Common Reed <i>Poa</i> spp. - Tussock Grass <i>Sclerolaena muricata</i> var. <i>semiglabra</i> - Black Roly Poly <i>Themeda triandra</i> - Kangaroo Grass + <i>Typha</i> spp. - Cumbungi + creeklines/soaks/poorly drained sites	<i>Arthropodium</i> spp. <i>Austrostipa</i> spp. <i>Bothriochloa macra</i> <i>Bulbine bulbosa</i> <i>Burchardia umbellata</i> <i>Chloris truncata</i> <i>Danthonia</i> spp. <i>Dianella revoluta</i> <i>Elymus scaber</i>	Lily Spear Grass Red-leg Grass Bulbine Lily Milkmaids Windmill Grass Wallaby Grass Spreading Flax-lily Common Wheatgrass	<i>Glycine clandestina</i> <i>Hardenbergia violacea</i> <i>Hibbertia obtusifolia</i> <i>Isotoma axillaris</i> <i>Lomandra filiformis</i> <i>Pelargonium australe</i> <i>Pimelea curviflora</i> <i>Stypandra glauca</i> <i>Themeda triandra</i>	Twining Glycine Purple Coral Pea Grey Guinea-flower Rock Isotome Wattle Mat-rush Native Storks-bill Curved Rice-flower Nodding Blue-lily Kangaroo Grass

Revegetation Species list copy from:
South West Slopes Revegetation Guide
Murray Catchment Management Committee and Department of Land & Water Conservation (1998)

DRG NO.	REV	DATE	DES/DOC	AUTH	AMENDMENT
307415 LC306	C	05/05/2020	SLM/SME	SME	ISSUE FOR APPROVAL