

New Primary School in Edmondson Park

Landscape Drawings and Design Report

DRAWING LIST

TITLE	DWG No.	REV.
COVER SHEET	LA-W-REP-000-A	B
DESIGN PRINCIPLES	LA-W-REP-001-A	B
EFSG REQUIREMENTS	LA-W-REP-002-A	B
LANDSCAPE MASTERPLAN	LA-W-REP-100-A	B
DETAIL LANDSCAPE PLAN - NORTH	LA-W-REP-101-A	B
DETAIL LANDSCAPE PLAN - SOUTH	LA-W-REP-102-A	B
LANDSCAPE SURFACES FINISHES PLAN - NORTH	LA-W-REP-103-A	A
LANDSCAPE SURFACES FINISHES PLAN - SOUTH	LA-W-REP-104-A	A
LANDSCAPE LEVELS AND GRADING PLAN - NORTH	LA-W-REP-105-A	A
LANDSCAPE LEVELS AND GRADING PLAN - SOUTH	LA-W-REP-106-A	A
LANDSCAPE SECTION A	LA-W-REP-200-A	B
LANDSCAPE SECTION B	LA-W-REP-201-A	A
LANDSCAPE SECTION C	LA-W-REP-202-A	A
STRATEGY DIAGRAMS	LA-W-REP-300-A	B
OPEN SPACE TYPOLOGIES	LA-W-REP-301-A	B
OPEN SPACE TYPOLOGIES	LA-W-REP-302-A	B
OPEN SPACE TYPOLOGIES	LA-W-REP-303-A	B
OPEN SPACE TYPOLOGIES	LA-W-REP-304-A	B
OPEN SPACE TYPOLOGIES	LA-W-REP-305-A	B
INDICATIVE MATERIALS - PALETTE	LA-W-REP-306-A	C
INDICATIVE TREE SCHEDULE	LA-W-REP-307-A	B
INDICATIVE PLANT SCHEDULE	LA-W-REP-308-A	A
SEAR RESPONSE	LA-W-REP-400-A	B



CONTEXT PLAN

Design Principles



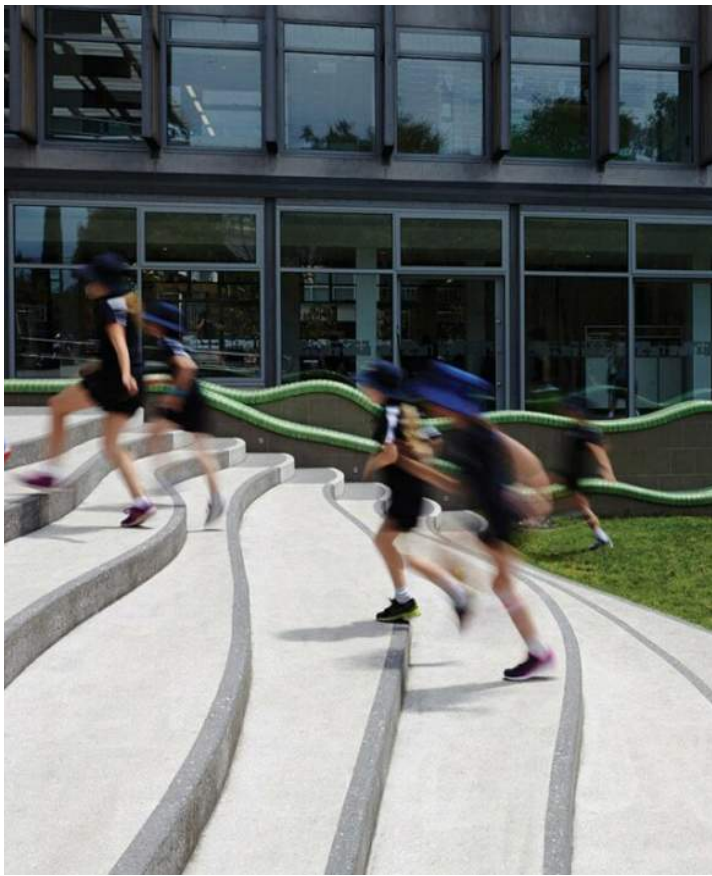
1. Context, Built Form and Landscape

- Consider Aboriginal cultural heritage and cultural plantings in the design
- Respond to site topography
- Address interface between community driven spaces and educational focused areas
- Respond to surrounding new residential and commercial developments
- Integrate transport including active pedestrian and cycle movement corridors
- Enhance existing endemic species such as Cumberland Plain Woodland
- Create a sense of identity through place-making and a strong community focused design



2. Sustainable, Efficient and Durable

- Develop a 'Climate Ready School' approach as part of a long term resilient strategy
- Respond to site aspect and micro-climate, particularly solar access, air quality and wind exposure
- Integrate WSUD into the design
- Select sustainable, robust and durable materials
- Promote active and public transport access
- Enhance biodiversity and reintroduce endemic species such as Cumberland Plain Woodland vegetation
- Respond to Urban Heat Island effect



3. Accessible and Inclusive

- Provide school entries that are safe, accessible, visible and welcoming
- Ensure good accessibility and legibility within the school
- Create clear through site links within the site
- Ensure pedestrian and cycle movement corridors accommodate and link to surrounding transport networks



4. Health and Safety

- Respond to local access and connections – footpaths, cycleways, bus, kiss n' drop
- Provide covered areas for protection from sun, rain and wind
- Support a better quality of life for students and local community members
- Sustain good mental and physical health
- Provide secure community accessible areas outside of school hours



5. Amenity

- Provide adequate outdoor space to accommodate student population, including future growth
- Ensure close interfaces between indoor and outdoor uses and spaces
- Provide landscape buffers to setback zones
- Implement areas for sociable activities which is inclusive of place-making



6. Whole Life, Flexibility and Adaptive

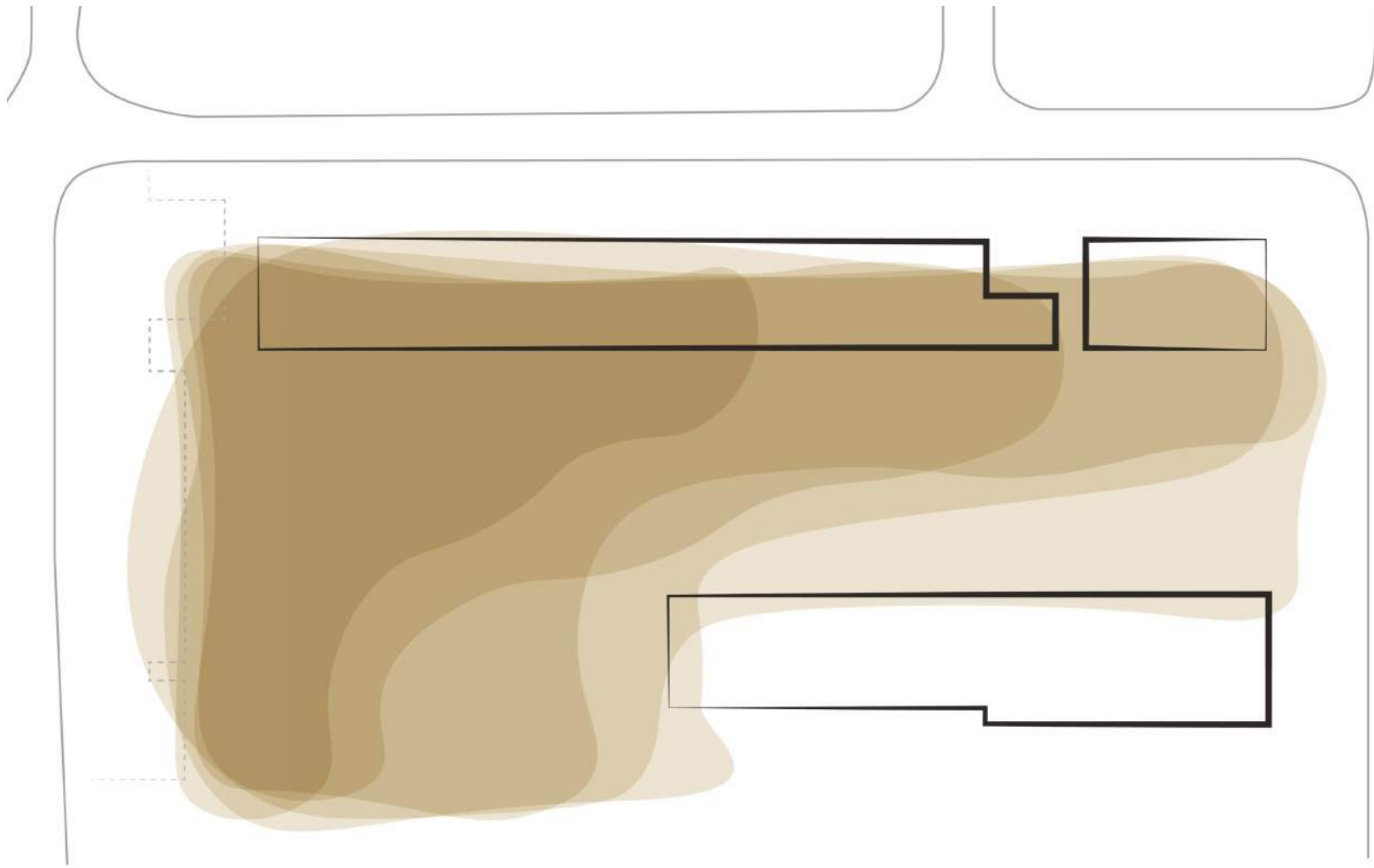
- Create a connective network of spaces which integrate play, create interest and a sense of place
- Provide capacity for multiple-use spaces which are flexible in use and have the potential to adapt to the change in functional requirements over time



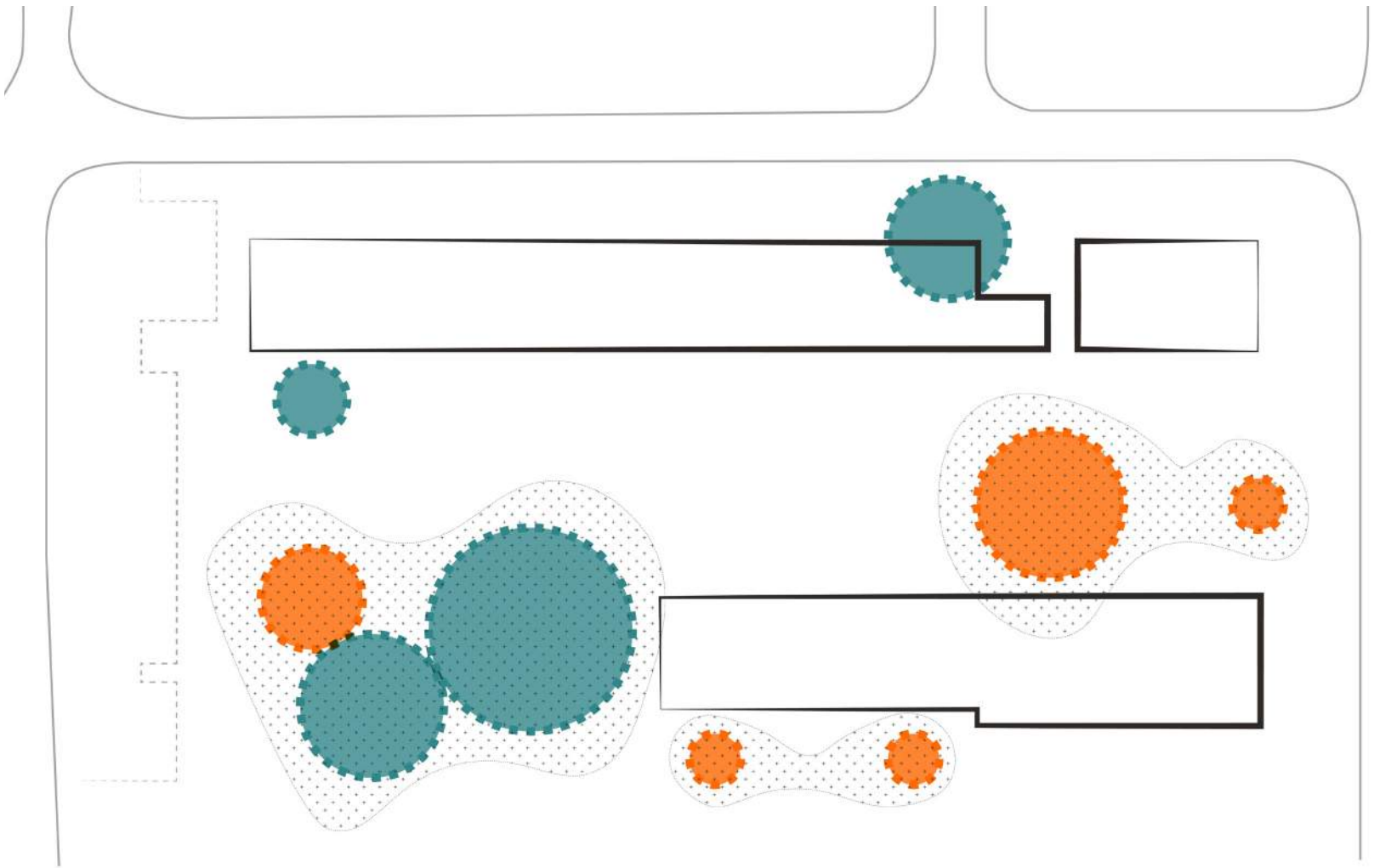
7. Aesthetics

- Create engaging and attractive environments
- Ensure landscape and building design are integrated
- Screen car parking and service zones
- Minimise and integrate security fencing into the design
- Create a stimulating environment which enhances and inspires learning

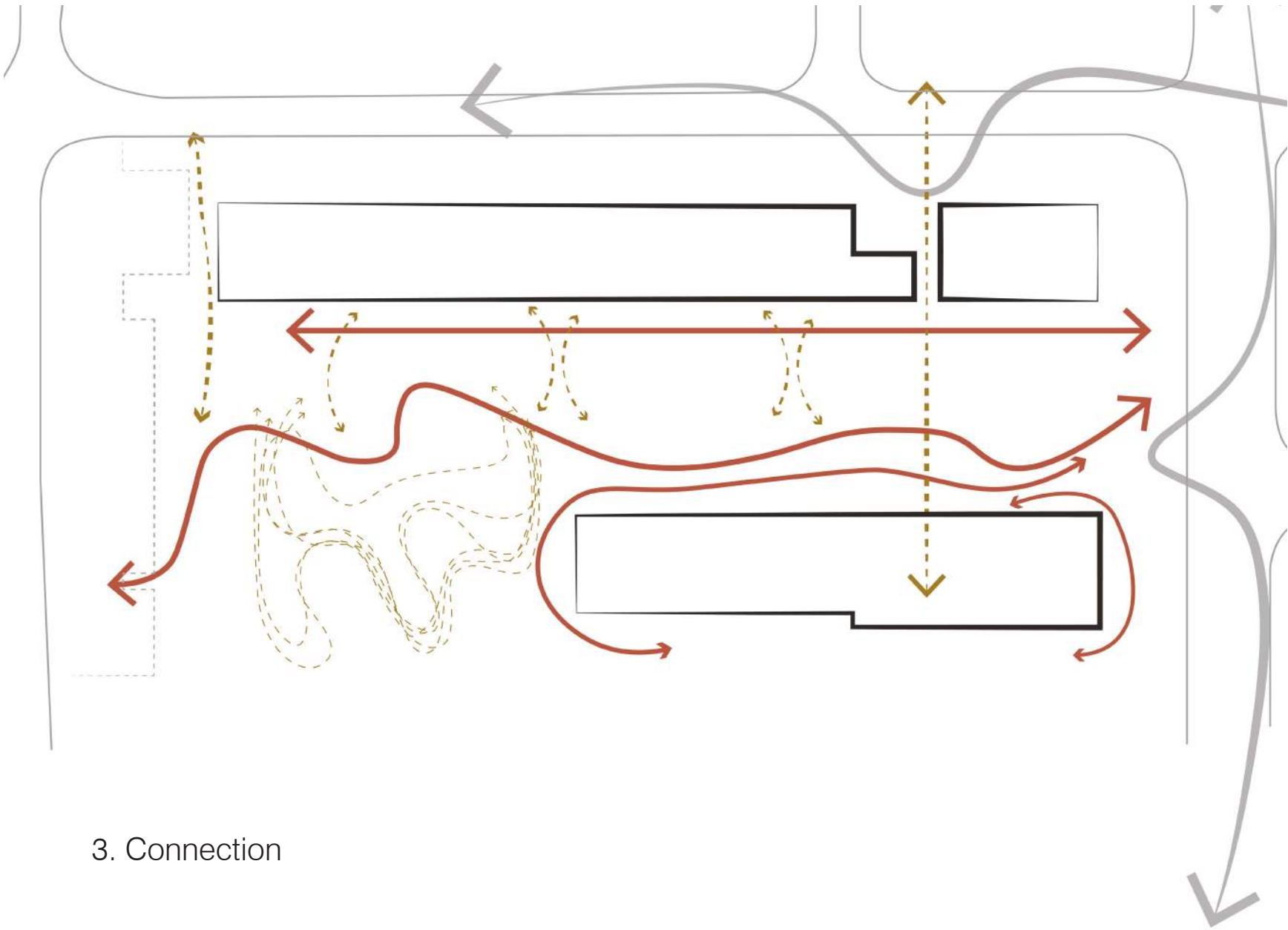
Site Narrative



1. Landform



2. Interaction



3. Connection

Landscape Typologies

The masterplan provides a range of open spaces to facilitate student's learning, physical activity, socialising and well-being. Relationships and adjacencies of uses and circulation patterns have been considered between indoor and outdoor spaces to ensure the smooth operation and use of all areas.

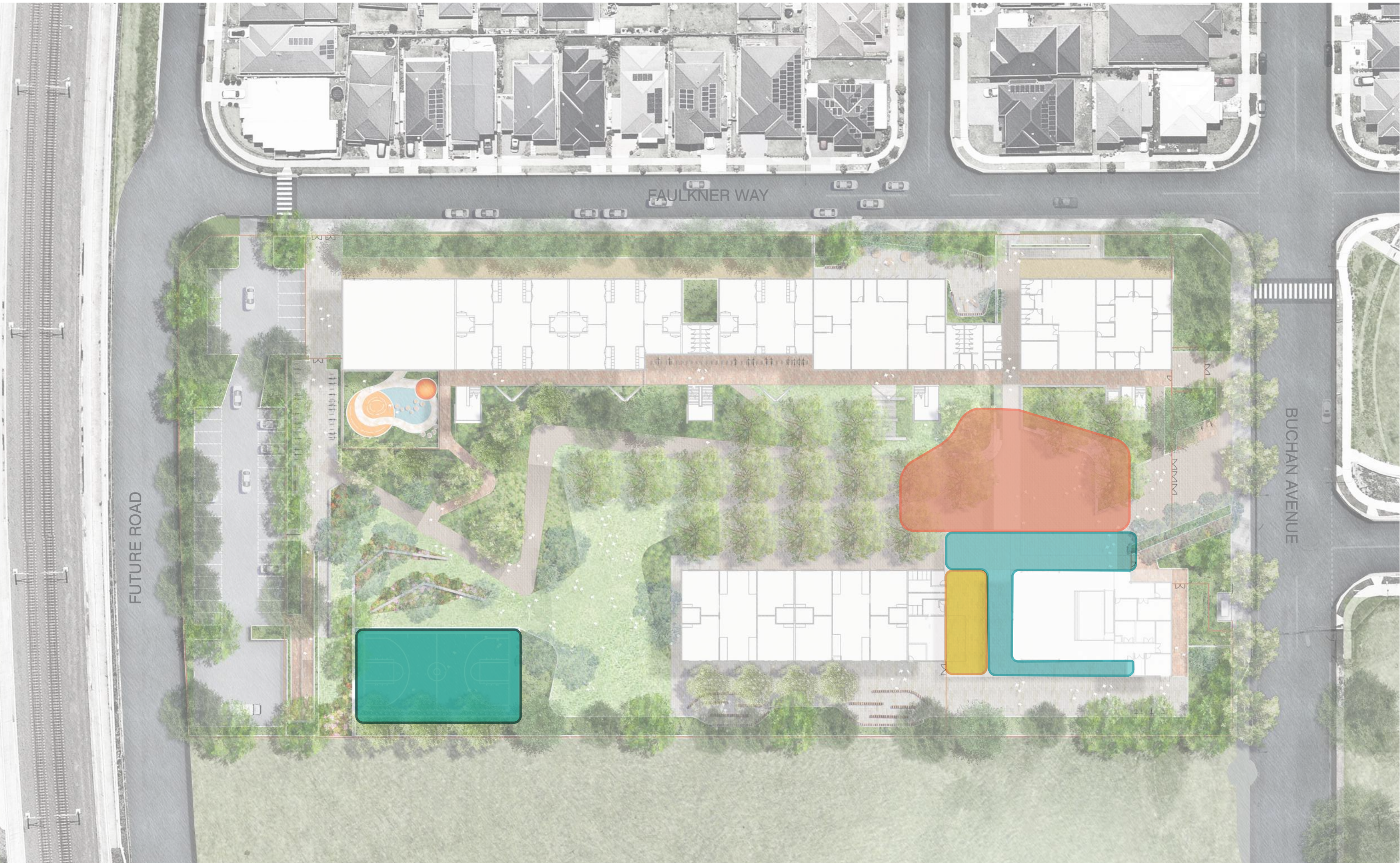
While meeting the functional criteria for the school, the landscape should also reflect the local character of the area, increase tree canopy cover and vegetation, and create a comfortable and inspiring environment for students, staff and visitors.

Accommodation Summary

The masterplan needs to accommodate the EFSG requirements of open space for a Core 35 Primary School. The requirements for Core 35 are shown in the table below.

EFSG Unit	Stream 9 Requirement
PS604 SERVERY COVERED AREA - TYPE 4	200m ²
PS604 COVERED OUTDOOR LEARNING AREA (COLA)	439m ²
PS505 GAMES UNIT	1. Total
PS607 ASSEMBLY AREA	875m ²

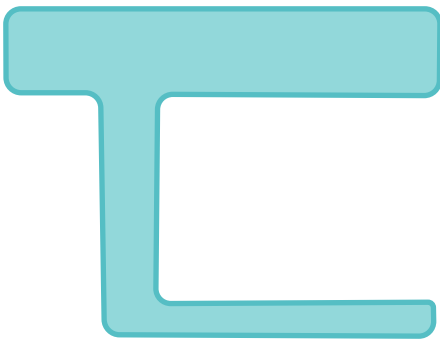
* inclusive of Assembly Court, all Covered Outdoor Spaces, Outdoor Learning Units, Games Field & Courts, and 'passive open spaces'.



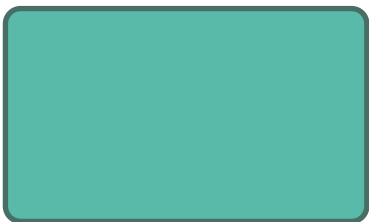
Servery Covered Area
- 200m²



Covered Outdoor Learning
Area (COLA) - 439m²



Games Unit - 455m²



Assembly/ Amphitheatre
Area - 630m²





LEGEND

- 1 Main school entrance
- 2 Secondary entry and ramp access
- 3 Pre-school Entrance
- 4 Vehicle entrance to carpark and pre-school drop off area
- 5 After hours pedestrian access
- 6 Amphitheatre and assembly area
- 7 COLA
- 8 Organised play and gathering space with formal canopy cover
- 9 Outdoor classrooms
- 10 Obstacle free building pedestrian access
- 11 SSU outdoor space and sensory garden
- 12 Active open recreational space
- 13 Semi-terraced Bush Food Garden
- 14 Games court
- 15 Planting embankment
- 16 Main access path
- 17 Indicative Pre-school outdoor play
- 18 Cycle facilities / bench seating
- 19 Pre-school drop off and parking area
- 20 Waste Area
- 21 Cycle storage units
- 22 Maintenance path

O C U L U S
level 1, 5 Wilson Street / Post Box 307 Newtown NSW 2042
p 02.9557.5533. f 02.9519.8323 mail@oculus.com.au

SCHOOLS
INFRASTRUCTURE NSW

Date	Rev. Description	Rev
07/05/21	Issue for DRAFT SSDA	A
18/05/21	Issue for SSDA	B

NEW PRIMARY SCHOOL IN
EDMONDSON PARK

Landscape Masterplan

scale: 1:500 @A1
job no.: S21-008
date: 18/05/21

drawn by:
checked:

CM/ZW
KS



LA-W-REP-
100-A

B



- LEGEND
- 1 Main pedestrian access
 - 2 Secondary entrance and ramp access
 - 3 Cycle Storage units
 - 4 After hours pedestrian access
 - 5 Canteen and COLA area
 - 6 Amphitheatre/ Assemble area
 - 7 Boundary edge buffer planting
 - 8 Outdoor play and gathering area
 - 9 Passive recreational space
 - 10 Outdoor classrooms
 - 11 Unobstructed building front access
 - 12 SSU Outdoor play and sensory garden
 - 13 Connecting pedestrian access routes
 - 14 Embankment planting
 - 15 Building canopy
 - 16 Maintenance path
 - 17 Ramp access
 - 18 Stair access

O C U L U S
level 1, 5 wilson street / post box 307 newtown nsw 2042
p 02.9557.5533. f 02.9519.8323 mail@oculus.com.au

SCHOOLS
INFRASTRUCTURE NSW

Date	Rev. Description	Rev
07/05/21	Issue for DRAFT SSDA	A
18/05/21	Issue for SSDA	B

NEW PRIMARY SCHOOL IN
EDMONDSON PARK

Landscape Illustrative
Plan - North

scale: 1:250 @A1
job no.: S21-008
date: 18/05/21

drawn by:
checked:

CM/ZW
KS



LA-W-REP-
101-A

B



Refer to Drawing L101

- LEGEND
- 1 Pre-school pedestrian entrance
 - 2 Vehicle entrance off Faulkner Way
 - 3 Pre-school 'Kiss and Ride'
 - 4 Carparking area
 - 5 Pedestrian access from carpark
 - 6 Secondary access point to primary school
 - 7 Bench seating
 - 8 Cycle Storage area
 - 9 Indicative Pre-school outdoor play
 - 10 Main pedestrian access spine
 - 11 Embankment and terraced planting
 - 12 Bush Food Planting
 - 13 Games Court
 - 14 Active outdoor recreational space
 - 15 Connecting pedestrian access routes
 - 16 Feature planting
 - 17 Unobstructed building front access
 - 18 Boundary edge and screen planting
 - 19 Waste bin area
 - 20 Maintenance path

O C U L U S
level 1, 5 wilson street / post box 307 newtown nsw 2042
p 02.9557.5533. f 02.9519.8323 mail@oculus.com.au

SCHOOLS
INFRASTRUCTURE NSW

Date	Rev. Description	Rev
07/05/21	Issue for DRAFT SSDA	A
18/05/21	Issue for SSDA	B

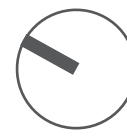
NEW PRIMARY SCHOOL IN
EDMONDSON PARK

Landscape Illustrative
Plan - South

scale: 1:250 @A1
job no.: S21-008
date: 18/05/21

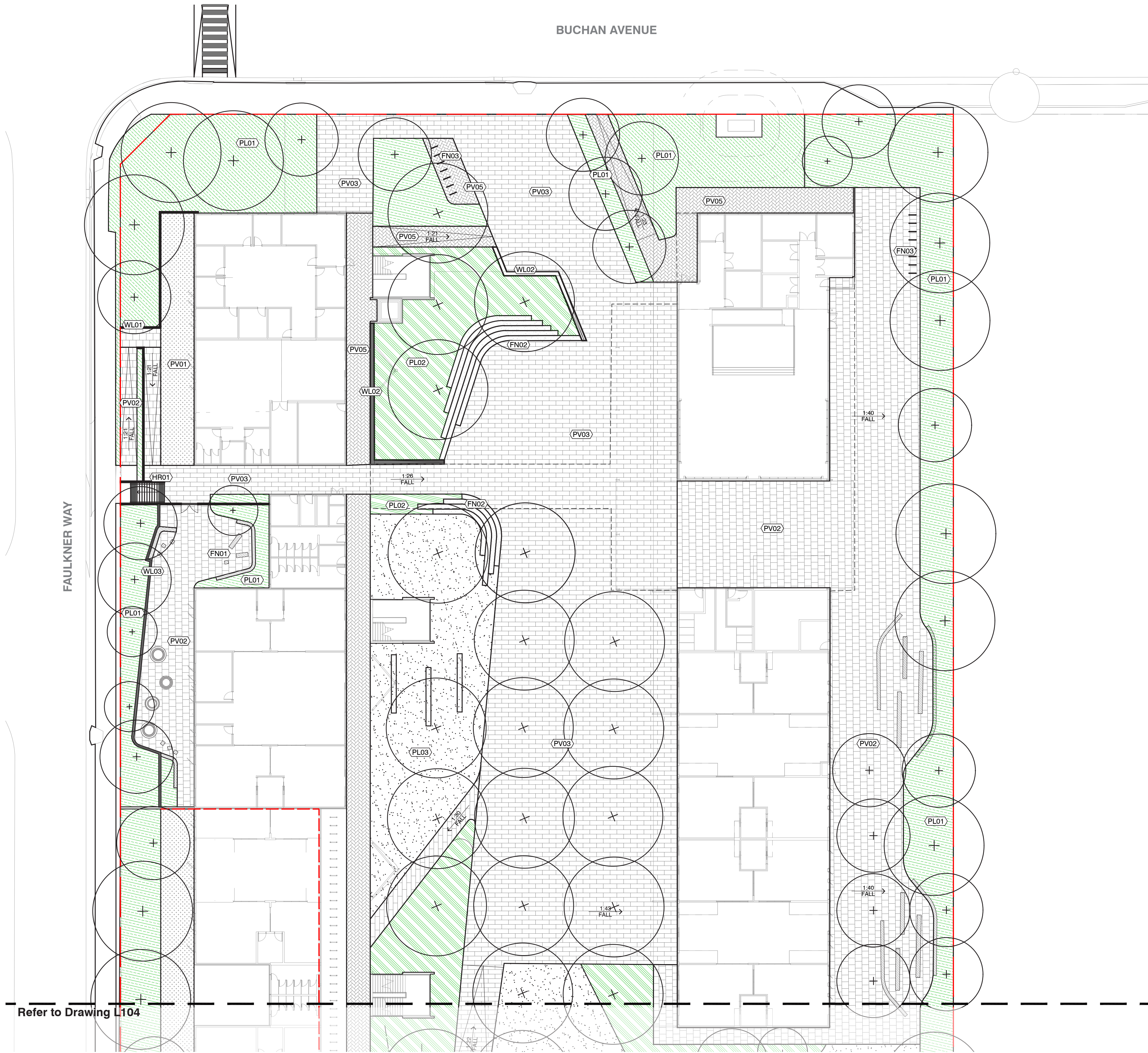
drawn by:
checked:

CM/ZW
KS



LA-W-REP-
102-A

B



GENERAL

- EXTENT OF WORKS
- SPLIT ARCHITECTURAL LEVEL

GRADING

- RELATIVE LEVEL
- TOP OF WALL
- GRADING FALL
- PROPOSED GRADING LINE

PV - PAVING

- PAVEMENT TYPE 01
DECOMPOSED GRANITE
- PAVEMENT TYPE 02
CONCRETE - GREY
- PAVEMENT TYPE 03
INSITU CONCRETE PAVING WITH OXIDE TO COLOUR AND SURFACE ETCHINGS - COLOUR MIX; BEIGE, LIGHT GREY AND MID-GREY
- PAVEMENT TYPE 04
BRICK PAVER
- PAVEMENT TYPE 06
ASPHALT. REFER TO CIVIL ENGINEERS DRAWINGS
- PAVEMENT TYPE 07
RUBBER SOFT FALL
- PAVEMENT TYPE 08
PAINTED ASPHALT

PL - PLANTING

- PLANTING TYPE 01
PERIMETER MASS PLANTING ON GRADE
- PLANTING TYPE 03
FEATURE AND EMBANKMENT PLANTING
- PLANTING TYPE 04
LAWN
- PLANTING TYPE 05
BUSH FOOD PLANTING

WL - WALLS

- WALL TYPE 01
150mm CONCRETE WALL
- WALL TYPE 02
500mm CONCRETE WALL
- WALL TYPE 03
Green Wall

FN - FURNITURE

- FURNITURE TYPE 01
CUSTOM TIMBER BENCH
- FURNITURE TYPE 02
CONCRETE WALL SEAT
- FURNITURE TYPE 04
BICYCLE HOOP

FE - FENCES

- FENCE TYPE 01
METAL PALISADE FENCE
- FENCE TYPE 02
CHAINLINK SPORTS FENCE

ST - STAIRS

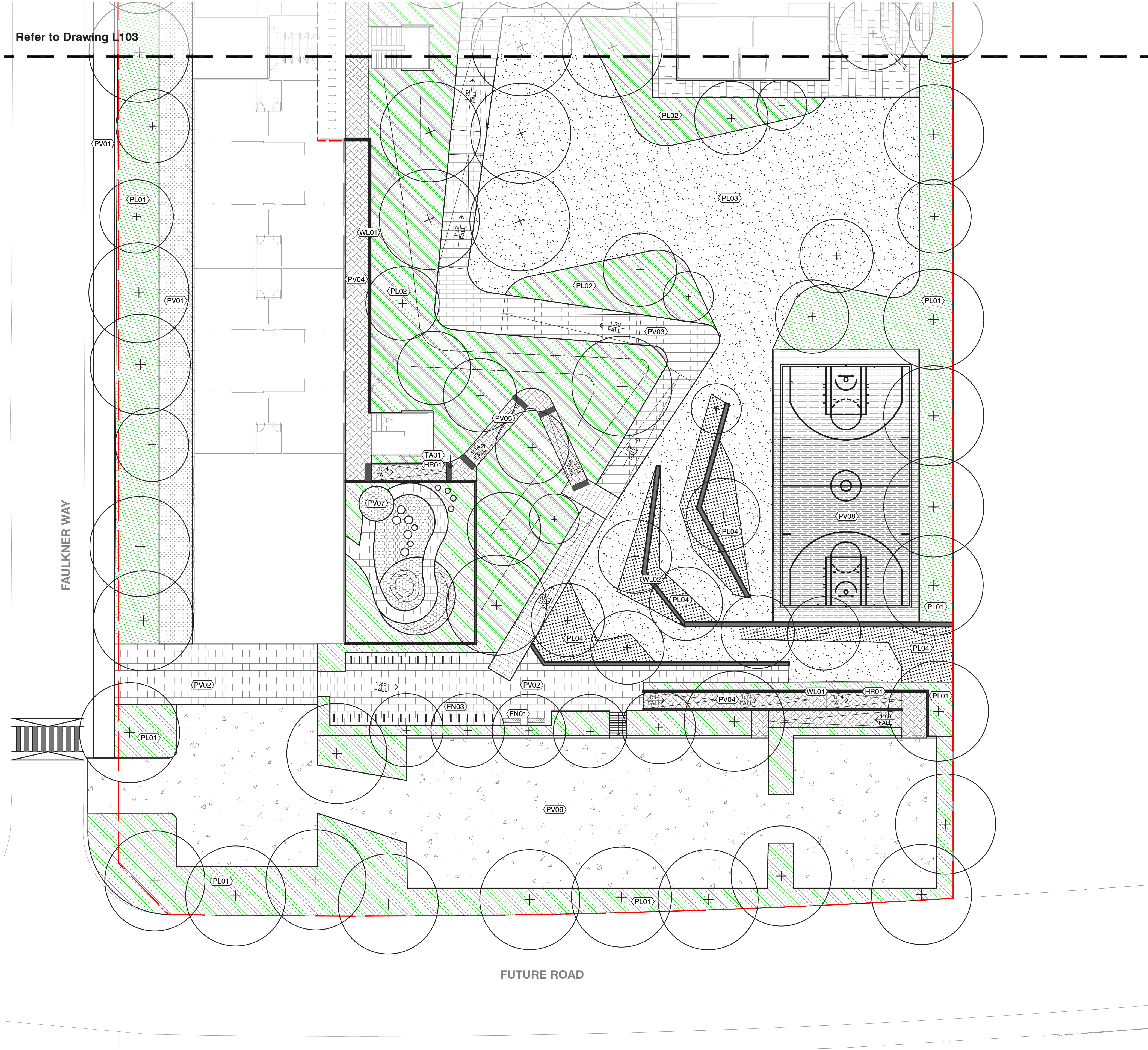
- STAIR TYPE 01
- TACTILE INDICATOR
TGSi

HR - HANDRAIL

- HANDRAIL TYPE 01

TP - TREE PLANTING

- TREE PLANTING TYPE 01
PROPOSED TREE



GENERAL

- EXTENT OF WORKS
- SPLIT ARCHITECTURAL LEVEL

GRADING

- RELATIVE LEVEL
- TOP OF WALL
- GRADING FALL
- PROPOSED GRADING LINE

PV - PAVING

- PAVEMENT TYPE 01
DECOMPOSED GRANITE
- PAVEMENT TYPE 02
CONCRETE - GREY
- PAVEMENT TYPE 03
INSITU CONCRETE PAVING WITH OXIDE TO COLOUR AND SURFACE ETCHINGS - COLOUR MIX: BEIGE, LIGHT GREY AND MID-GREY
- PAVEMENT TYPE 04
BRICK PAVER
- PAVEMENT TYPE 06
ASPHALT. REFER TO CIVIL ENGINEERS DRAWINGS
- PAVEMENT TYPE 07
RUBBER SOFT FALL
- PAVEMENT TYPE 08
PAINTED ASPHALT

PL - PLANTING

- PLANTING TYPE 01
PERIMETER MASS PLANTING ON GRADE
- PLANTING TYPE 03
FEATURE AND EMBANKMENT PLANTING
- PLANTING TYPE 04
LAWN
- PLANTING TYPE 05
BUSH FOOD PLANTING

WL - WALLS

- WALL TYPE 01
150mm CONCRETE WALL
- WALL TYPE 02
500mm CONCRETE WALL
- WALL TYPE 03
Green Wall

FN - FURNITURE

- FURNITURE TYPE 01
CUSTOM TIMBER BENCH
- FURNITURE TYPE 02
CONCRETE WALL SEAT
- FURNITURE TYPE 04
BICYCLE HOOP

FE - FENCES

- FENCE TYPE 01
METAL PALISADE FENCE
- FENCE TYPE 02
CHAINLINK SPORTS FENCE

ST - STAIRS

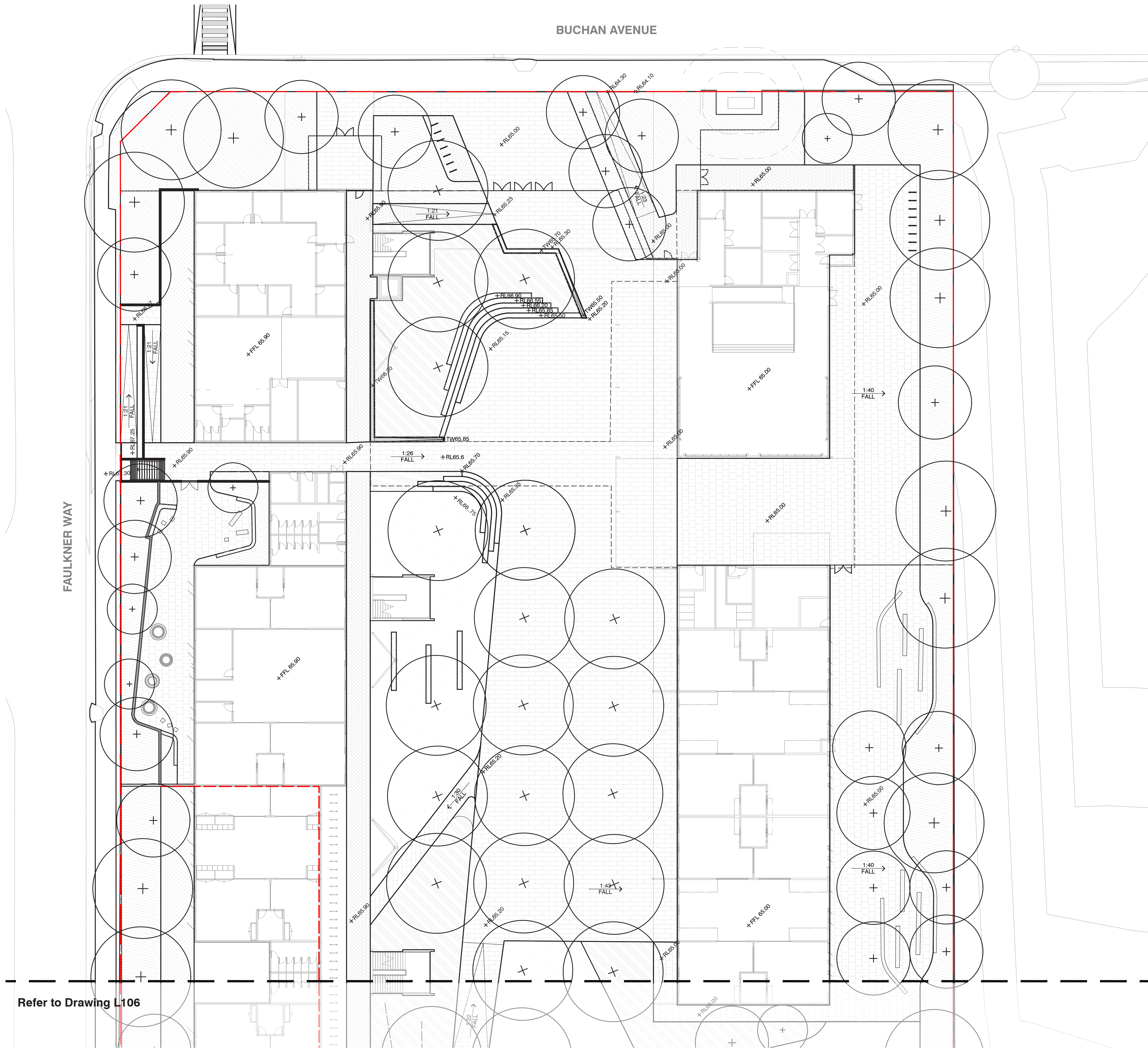
- STAIR TYPE 01
- TACTILE INDICATOR
TGSi

HR - HANDRAIL

- HANDRAIL TYPE 01

TP - TREE PLANTING

- TREE PLANTING TYPE 01
PROPOSED TREE



GENERAL

- EXTENT OF WORKS
- SPLIT ARCHITECTURAL LEVEL

GRADING

- RELATIVE LEVEL
- TOP OF WALL
- GRADING FALL
- PROPOSED GRADING LINE

PV - PAVING

- PAVEMENT TYPE 01
DECOMPOSED GRANITE
- PAVEMENT TYPE 02
CONCRETE - GREY
- PAVEMENT TYPE 03
INSITU CONCRETE PAVING WITH OXIDE TO COLOUR AND SURFACE ETCHINGS - COLOUR MIX; BEIGE, LIGHT GREY AND MID-GREY
- PAVEMENT TYPE 04
BRICK PAVER
- PAVEMENT TYPE 06
ASPHALT. REFER TO CIVIL ENGINEERS DRAWINGS
- PAVEMENT TYPE 07
RUBBER SOFT FALL
- PAVEMENT TYPE 08
PAINTED ASPHALT

PL - PLANTING

- PLANTING TYPE 01
PERIMETER MASS PLANTING ON GRADE
- PLANTING TYPE 03
FEATURE AND EMBANKMENT PLANTING
- PLANTING TYPE 04
LAWN
- PLANTING TYPE 05
BUSH FOOD PLANTING

WL - WALLS

- WALL TYPE 01
150mm CONCRETE WALL
- WALL TYPE 02
500mm CONCRETE WALL
- WALL TYPE 03
Green Wall

FN - FURNITURE

- FURNITURE TYPE 01
CUSTOM TIMBER BENCH
- FURNITURE TYPE 02
CONCRETE WALL SEAT
- FURNITURE TYPE 04
BICYCLE HOOP

FE - FENCES

- FENCE TYPE 01
METAL PALISADE FENCE
- FENCE TYPE 02
CHAINLINK SPORTS FENCE

ST - STAIRS

- STAIR TYPE 01
- TACTILE INDICATOR TGS

HR - HANDRAIL

- HANDRAIL TYPE 01

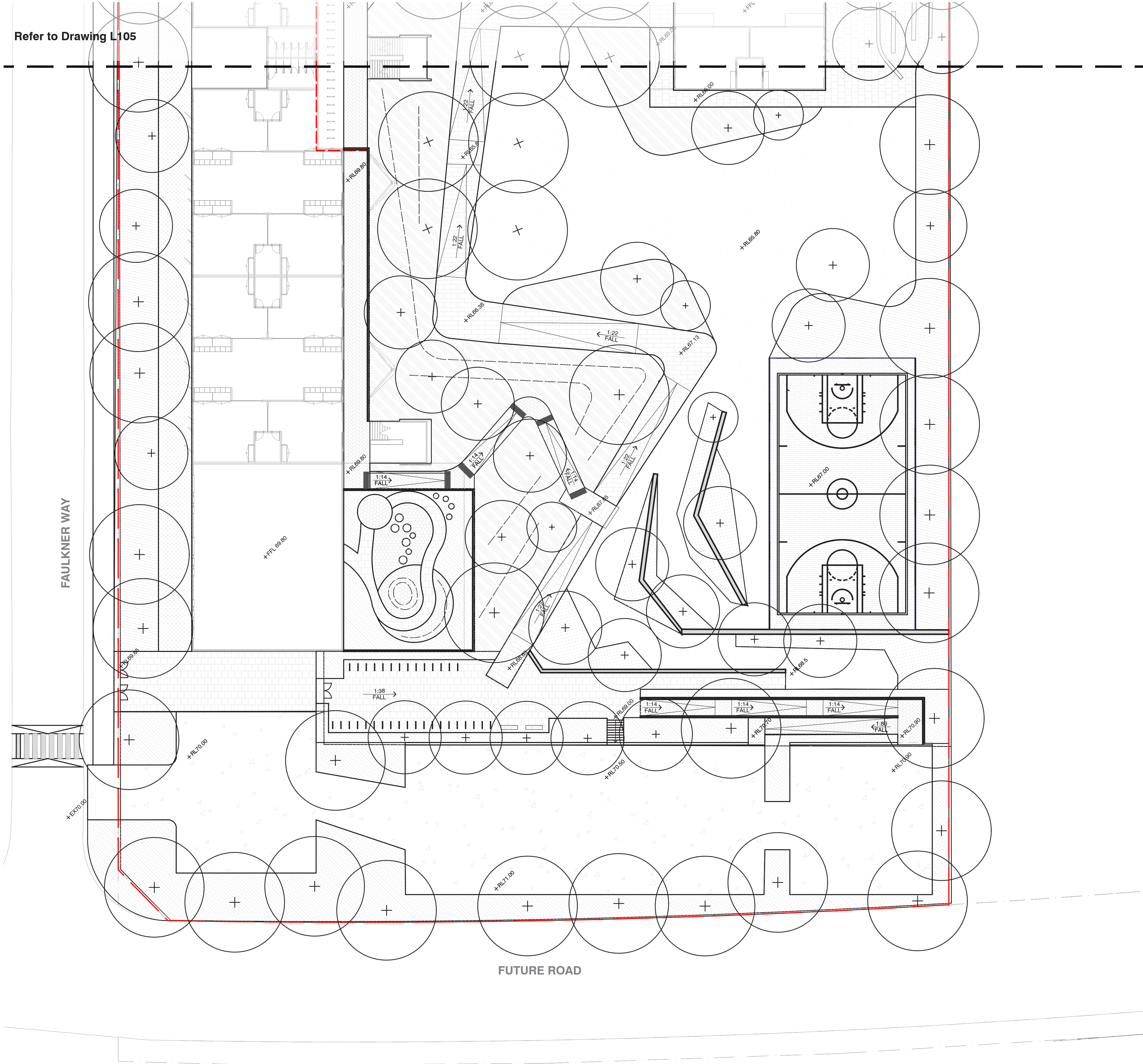
TP - TREE PLANTING

- TREE PLANTING TYPE 01
PROPOSED TREE

Refer to Drawing L106

Date	Rev. Description	Rev
18/05/21	Issue for SSDA	A





GENERAL

- EXTENT OF WORKS
- SPLIT ARCHITECTURAL LEVEL

GRADING

- RELATIVE LEVEL
- TOP OF WALL
- GRADING FALL
- PROPOSED GRADING LINE

PV - PAVING

- PAVEMENT TYPE 01
DECOMPOSED GRANITE
- PAVEMENT TYPE 02
CONCRETE - GREY
- PAVEMENT TYPE 03
INSITU CONCRETE PAVING WITH OXIDE TO COLOUR AND SURFACE ETCHINGS - COLOUR MIX; BEIGE, LIGHT GREY AND MID-GREY
- PAVEMENT TYPE 04
BRICK PAVER
- PAVEMENT TYPE 06
ASPHALT. REFER TO CIVIL ENGINEERS DRAWINGS
- PAVEMENT TYPE 07
RUBBER SOFT FALL
- PAVEMENT TYPE 08
PAINTED ASPHALT

PL - PLANTING

- PLANTING TYPE 01
PERIMETER MASS PLANTING ON GRADE
- PLANTING TYPE 03
FEATURE AND EMBANKMENT PLANTING
- PLANTING TYPE 04
LAWN
- PLANTING TYPE 05
BUSH FOOD PLANTING

WL - WALLS

- WALL TYPE 01
150mm CONCRETE WALL
- WALL TYPE 02
500mm CONCRETE WALL
- WALL TYPE 03
Green Wall

FN - FURNITURE

- FURNITURE TYPE 01
CUSTOM TIMBER BENCH
- FURNITURE TYPE 02
CONCRETE WALL SEAT
- FURNITURE TYPE 04
BICYCLE HOOP

FE - FENCES

- FENCE TYPE 01
METAL PALISADE FENCE
- FENCE TYPE 02
CHAINLINK SPORTS FENCE

ST - STAIRS

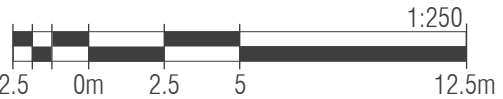
- STAIR TYPE 01
- TACTILE INDICATOR TGS1

HR - HANDRAIL

- HANDRAIL TYPE 01

TP - TREE PLANTING

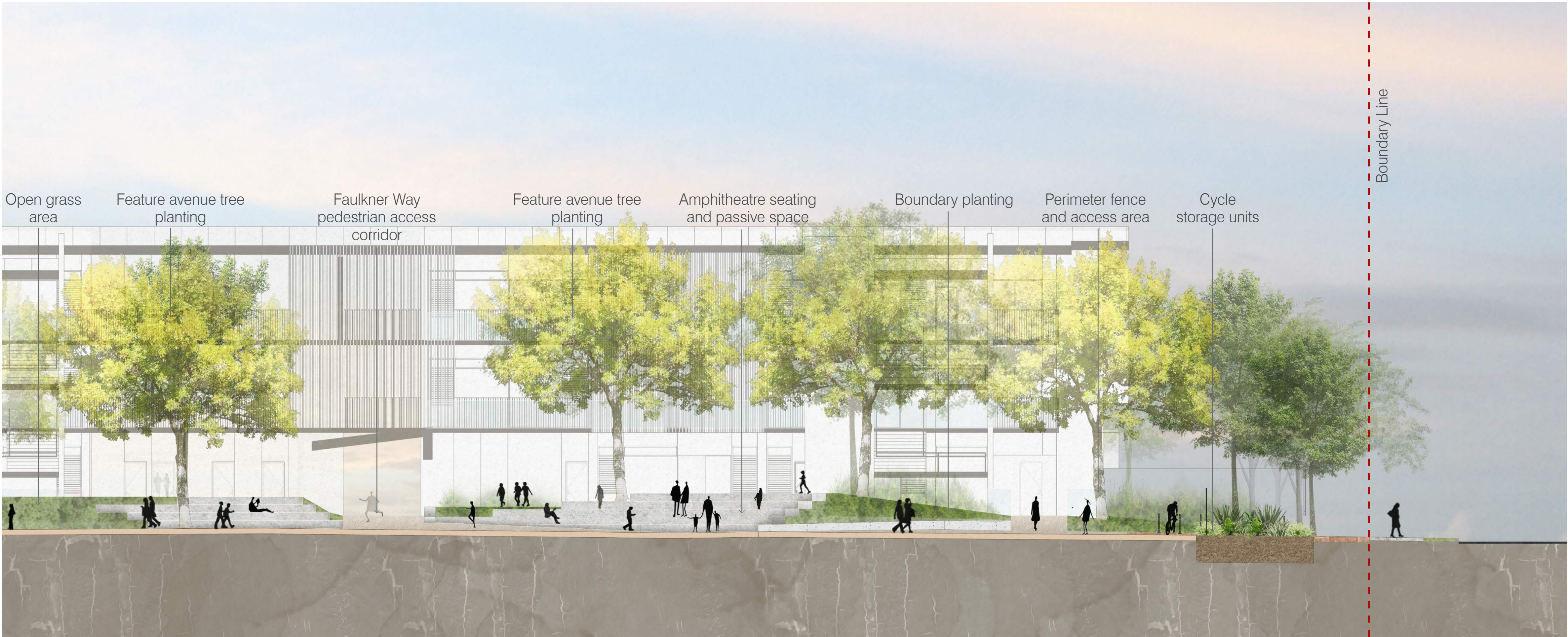
- TREE PLANTING TYPE 01
PROPOSED TREE



Date	Rev. Description	Rev
18/05/21	Issue for SSDA	A



- LEGEND
- ① Assembly area with feature deciduous tree avenue planting
 - ② Informal passive grass area
 - ③ Entrance courtyard area
 - ④ Boundary planting
 - ⑤ Buchan Street main entrance. Cycle storage units positioned along edge treatment



Amphitheatre/ Assembly area and functional passive space Connecting walkway from Faulkner Way Amphitheatre/ Assembly area with graded step seating Planting embankment Entrance with cycle storage facilities Footway and roadside planting verge along Buchan Ave Existing carriageway

O C U L U S
level 1, 5 wilson street / post box 307 newtown nsw 2042
p 02.9557.5533. f 02.9519.8323 mail@oculus.com.au

SCHOOLS
INFRASTRUCTURE NSW

Date	Rev. Description	Rev
07/05/21	Issue for DRAFT SSDA	A
18/05/21	Issue for SSDA	B

NEW PRIMARY SCHOOL IN
EDMONDSON PARK

Landscape Section A

scale:
job no.:
date:

As Shown
S21-008
18/05/21

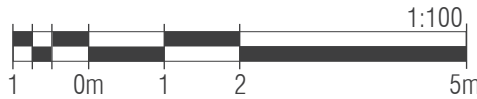
drawn by:
checked:

CM/ZW
KS

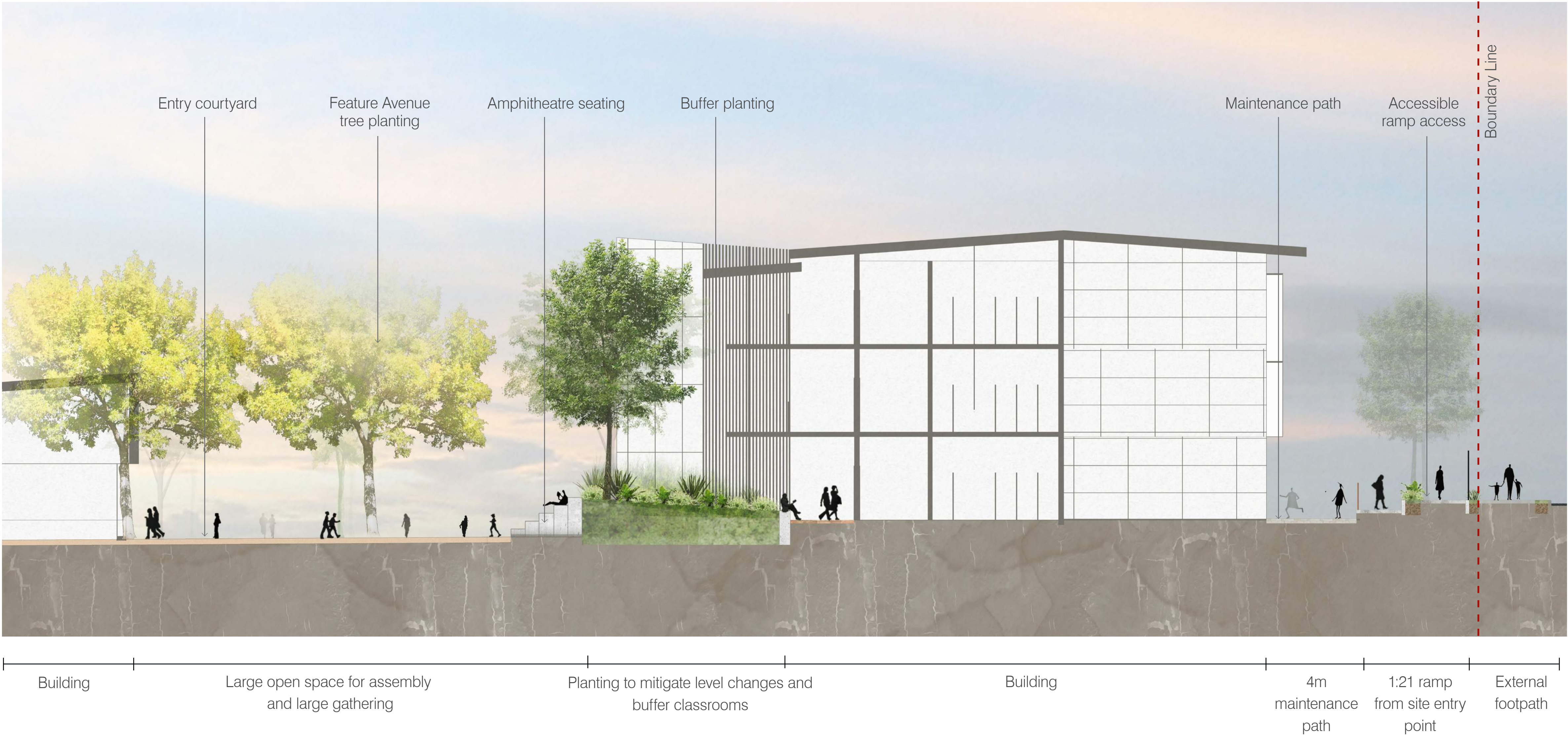
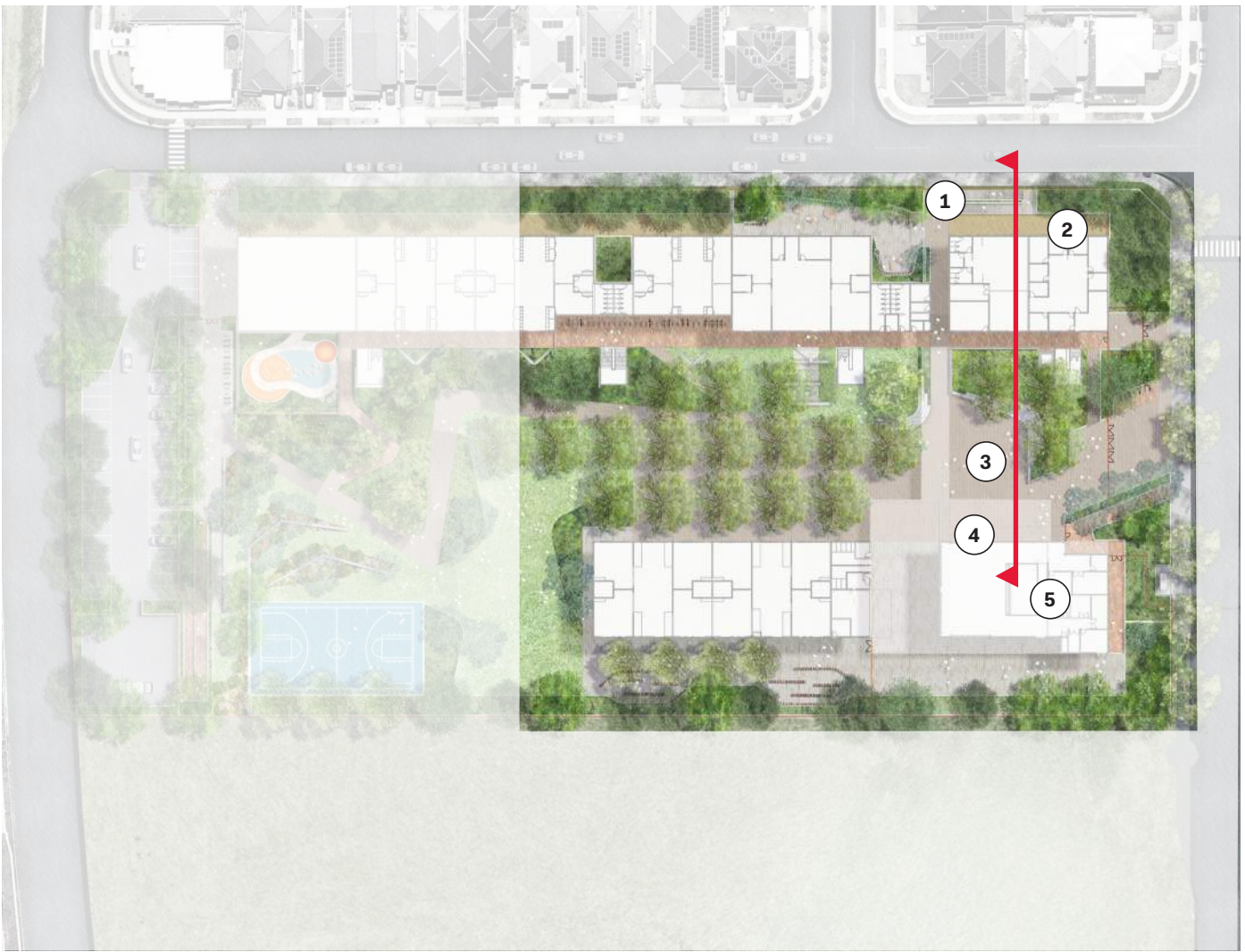


LA-W-REP-
200-A

B



- LEGEND
- 1 Ramp access to site
 - 2 Maintenance path
 - 3 Entrance courtyard area
 - 4 Building front access
 - 5 Hall and COLA Building



O C U L U S
level 1, 5 wilson street / post box 307 newtown nsw 2042
p 02.9557.5533. f 02.9519.8323 mail@oculus.com.au

SCHOOLS
INFRASTRUCTURE NSW

Date	Rev. Description	Rev
18/05/21	Issue for SSDA	A

NEW PRIMARY SCHOOL IN
EDMONDSON PARK

Landscape Section B

scale:
job no.:
date:

As Shown
S21-008
18/05/21

drawn by:
checked:

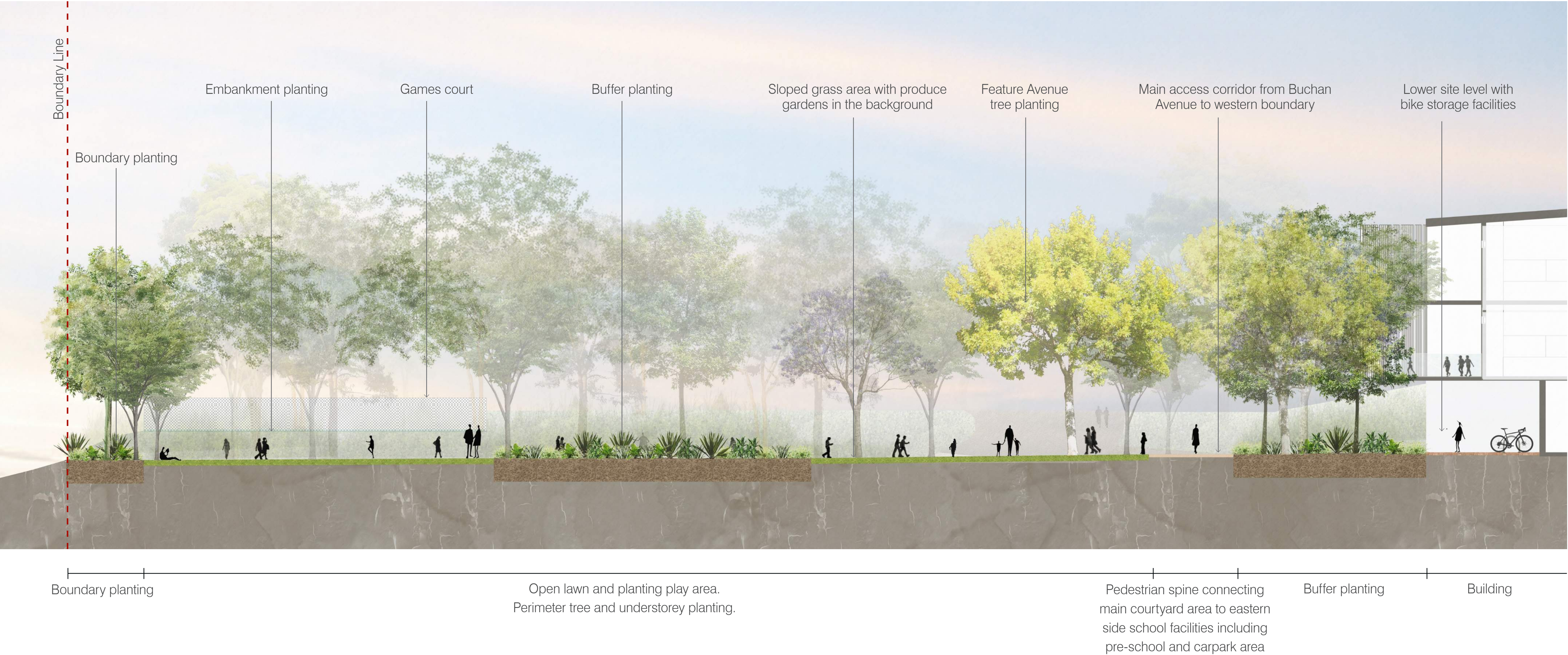
CM/ZW
KS



LA-W-REP-
201-A

A

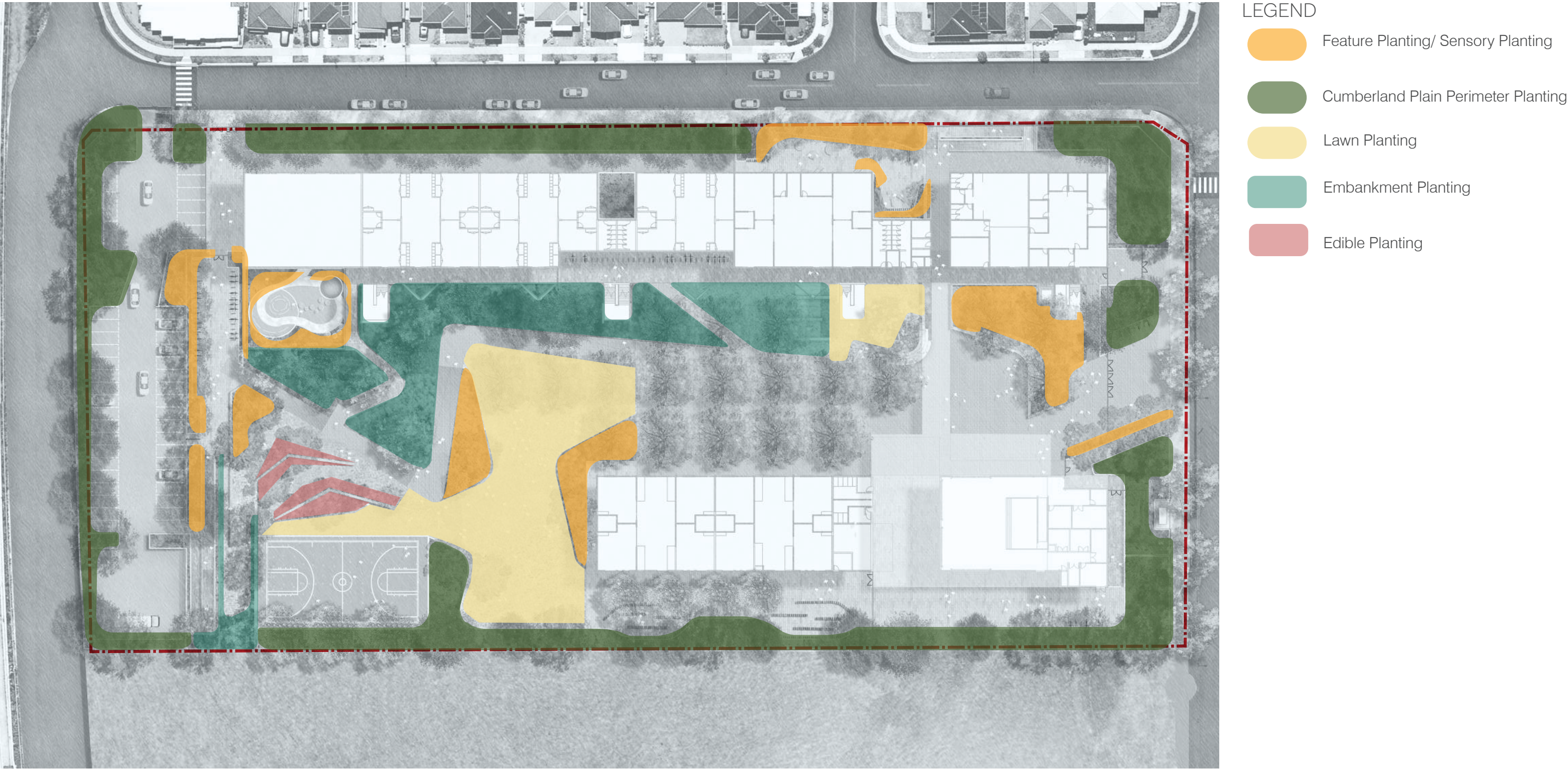
- LEGEND**
- ① Obstacle free building front movement corridor
 - ② Ramp access
 - ③ Main access spine
 - ④ Informal active open space
 - ⑤ Boundary buffer planting



Date	Rev. Description	Rev
18/05/21	Issue for SSDA	A



Planting Strategy



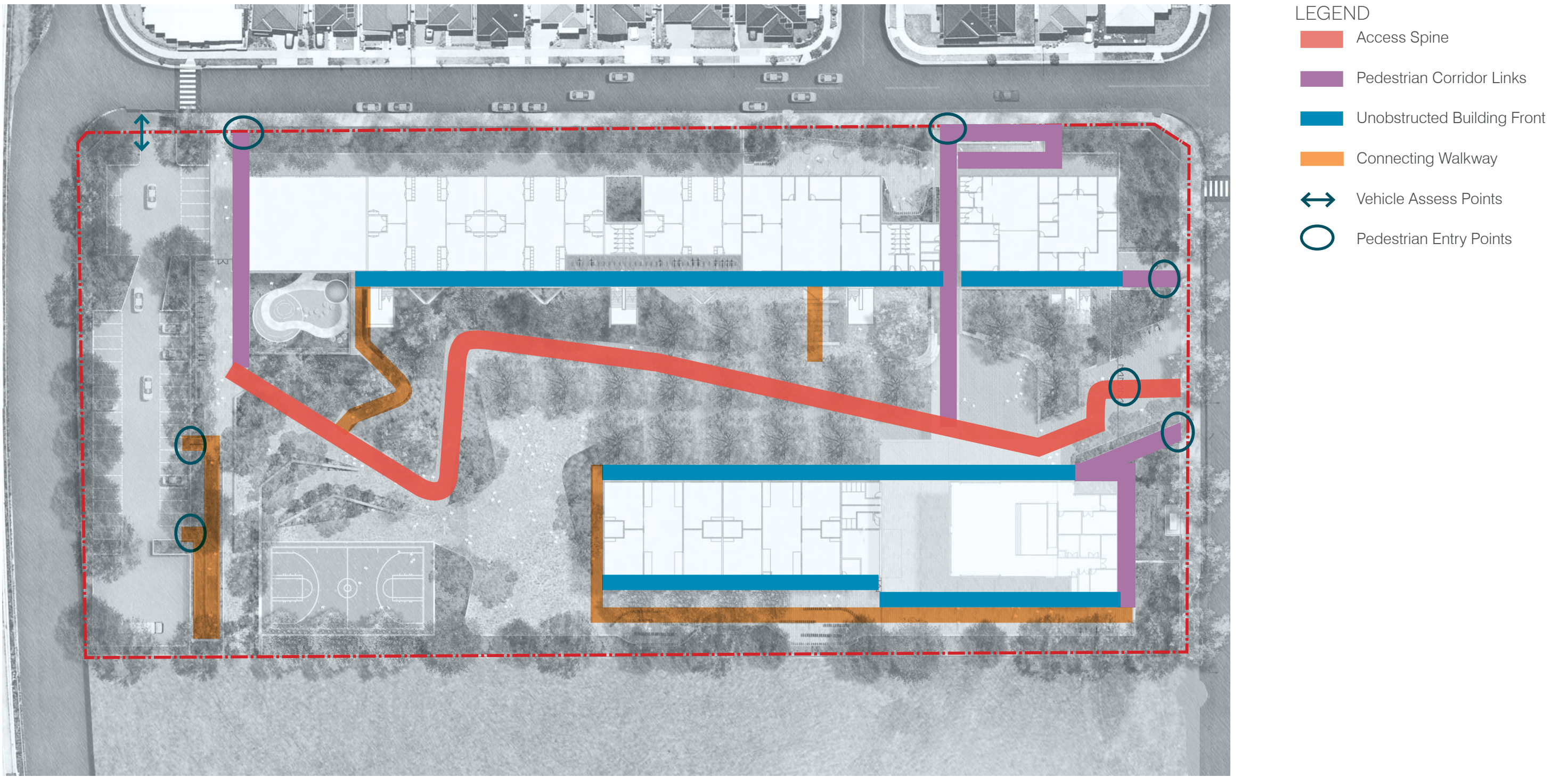
Tree Canopy Cover



Fencing Strategy



Pedestrian Movement Corridor



Entrance Areas



Outdoor Assembly Area



Image:
AHR, Rowley Learning Campus,
United Kingdom



Image:
Lipman-Context, Bella-Vista
Public School, NSW



Image:
AHR ,David Livingstone
Memorial Primary School , UK



Image:
Germany



Image:
OCULUS, Loreto Mandeville, VIC



Image:
Woods Baggot,
Collins Arch, VIC

Date	Rev. Description	Rev
07/05/21	Issue for DRAFT SSDA	A
18/05/21	Issue for SSDA	B



Servery and COLA Areas



Open Play Space



Image:
Scale Architecture, Australia Street
Infants School, NSW



Image:
ASPECT, Marrickville



Image:
Melbourne Queen Victoria Gardens
Victoria, Melbourne



Image:
LSA Erskineville
Primary School, NSW



Image:
Children First
Pre-School,
Blacktown, NSW



Image:
McGregor Smith,
Marlborough
Primary School ,UK

Date	Rev. Description	Rev
07/05/21	Issue for DRAFT SSDA	A
18/05/21	Issue for SSDA	B



Outdoor Learning



Games Court



Image:
RB Landscapes,
St Macartans PS, VIC



Image:
Scotch Oakburn
College, Tas



Image:
Tyrrell Studio,
Anzac Park
Public School, NSW



Image:
AHR, Front Street
Primary School, UK



Image:
Redding School of
Arts, USA



Image:
Peter Elliot
Architecture, RMIT, VIC

Date	Rev. Description	Rev
07/05/21	Issue for DRAFT SSDA	A
18/05/21	Issue for SSDA	B

scale:	Not to Scale	drawn by:	CM/ZW
job no.:	S21-008	checked:	KS
date:	18/05/21		



Passive Landscape



Active Informal Open Space



Image:
EJE Architecture Ballina
Coast High School, NSW



Image:
TCL, Melbourne
Girls Grammar
School, VIC



Image:
Encounter Lutheran
College, SA



Image:
Penrhos College,
Como, WA



Image:
Heathfield Primary
School, SA



Image:
Coleridge Primary
School, London

Date	Rev. Description	Rev
07/05/21	Issue for DRAFT SSDA	A
18/05/21	Issue for SSDA	B



Onsite Carpark and Vehicle Drop off Area



Perimeter Landscape Planting



Image:
EJE Architecture Ballina
Coast High School, NSW



Image:
OCULUS, Cardinal
Freeman Village, NSW

Image:
Sam Cox
Landscapes,
Curlewis, VIC

Image:
Clermont Park
Edmondson Park, NSW

Date	Rev. Description	Rev
07/05/21	Issue for DRAFT SSDA	A
18/05/21	Issue for SSDA	B



Indicative Materials

Fence & Walls



2.15m Security Perimeter Fence



Internal Balustrading



Concrete Retaining Walls



Sports Court Fencing

Furniture



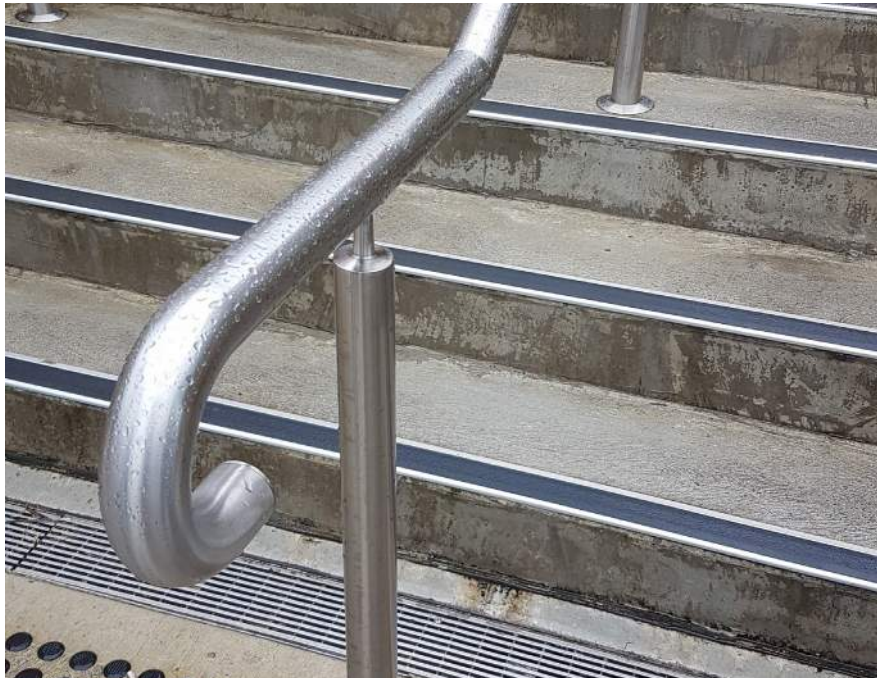
Timber Bench



Sandstone Bench



Insitu Bleachers



Stainless Steel Handrails to AS1428

Paving



Insitu Concrete



Insitu Concrete with Oxide for colour



Decomposed Granite



Brick Paving



Coloured Asphalt



Aboriginal Interpretation in Paving

Softscape



Mounding Planting



At Grade Planting



Large Active Lawn



Linear Tree Planting



Layered, Cascading Planting

Indicative Tree Schedule

Feature and Embankment Planting

Species	Common Name	Mature Height	Mature Spread
Angophora floribunda	Rough Barked Apple	15m	10m
Corymbia maculata	Spotted Gum	30m	20m
Tristaniopsis luscious	Luscious water gum	6m	4m
Waterhousia floribunda	Weeping Lilly Pilly	13m	10m



Angophora floribunda



Corymbia maculata



Tristaniopsis luscious



Waterhousia floribunda

Cumberland Plain Planting

Species	Common Name	Mature Height	Mature Spread
Angophora floribunda	Rough Barked Apple	15m	10m
Angophora subvelutina	Broad Leaved Apple	20m	10m
Brachychiton populneus	Kurrajong Tree	10m	10m
Corymbia maculata	Spotted Gum	30m	20m
Eucalyptus ampifolia	Cabbage gum	30m	15m
Eucalyptus baueriana	Blue box	20m	10m
Eucalyptus crebra	Narrow-leaved red ironbark	30m	14m
Eucalyptus eugenioides	Thin-leaved stringybark	20m	10m
Eucalyptus fibrosa	Broad-leaved red ironbark	30m	15m
Eucalyptus globoides	White stringybark	30m	25m
Eucalyptus longifolia	Woollybutt	25m	15m
Eucalyptus moluccana	Grey box	25m	15m
Eucalyptus punctata	Grey gum	25m	12m
Melaleuca linariifolia	Tea tree	10m	4m



Angophora floribunda



Brachychiton populneus



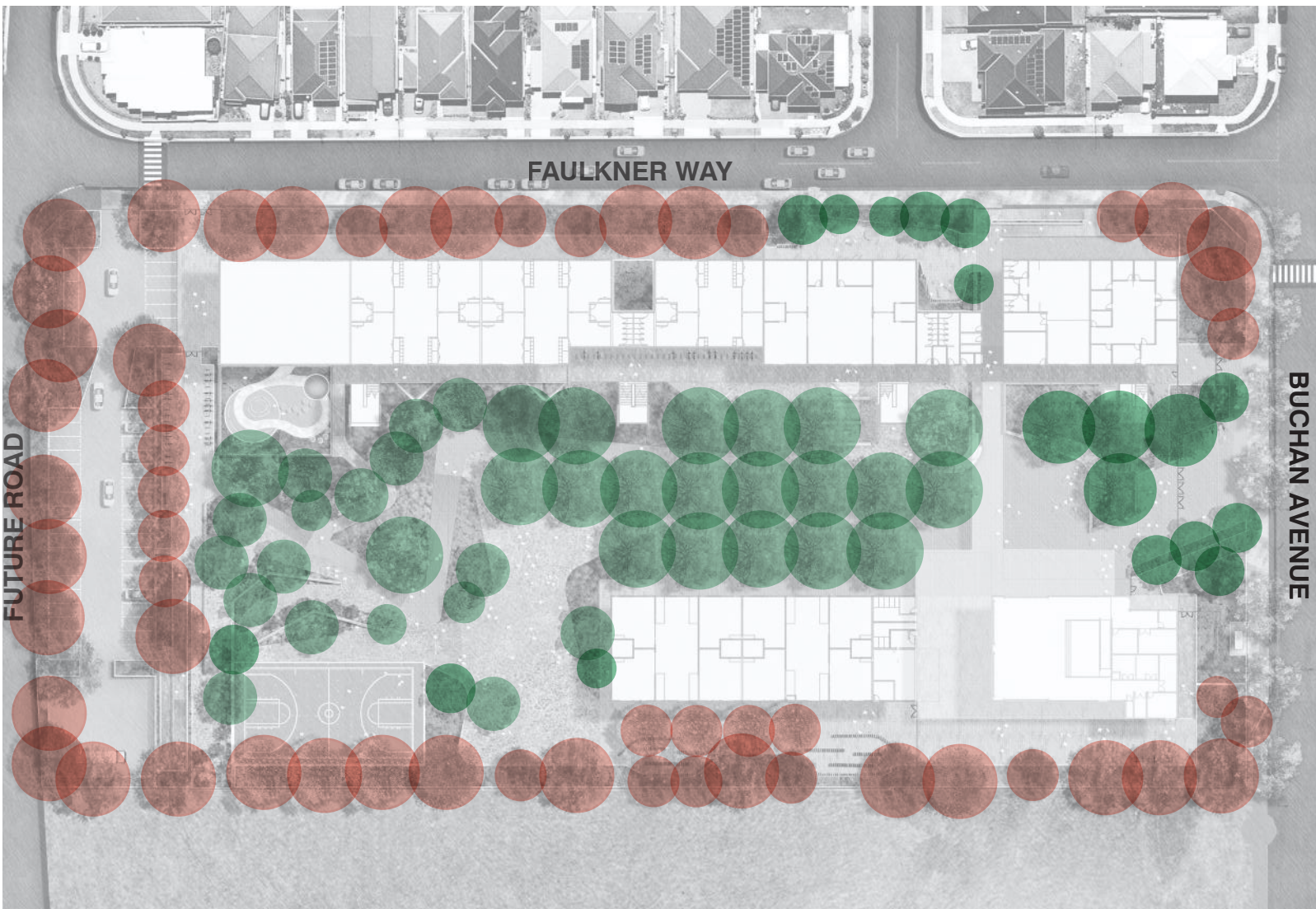
Eucalyptus crebra



Eucalyptus longifolia



Melaleuca linariifolia



Date	Rev. Description	Rev
07/05/21	Issue for DRAFT SSDA	A
18/05/21	Issue for SSDA	B

scale:	n/a	drawn by:	CM/ZW	LA-W-REP-	B
job no.:	S21-008	checked:	KS	307-A	
date:	18/05/21				

Indicative Planting Schedule

Bush Food Planting

School focused Project

Feature and Embankment Planting

Species	Common Name	Mature Height	Mature Spread
Callistemon 'Little John'	Dwarf Bottlebrush	1m	1m
Ctenanthe 'Silver-Maroon'	Never-never plant	0.5m	0.5m
Dianella caerulea	Paroo Lily	0.5m`	0.5m
Doryanthes excelsa	Gynea Lily	1.0m	1.0m
Echinacea purpurea	Purple Cone Flower	0.6m	0.5m
Gardenia radicans	Dwarf Gardenia	0.5m	1.5m
Helianthus annuus	Common Sunflower	0.9m	1m
Hibbertia scandens	Climbing Guinea Vine	0.5m	3m
Lavandula dentata	French Lavender	0.8m	0.6m
Leptospermum Pink Cascade	Tea Tree Hybrid	1.2m	0.8m
Phormium tenax	'Bronze Warrior' Bronze Flax	2.0m	1.8m
Trachelospermum jasminoides	Star Jasmine	0.2m	2.0m



Banksia spinulosa



Dichelachne micrantha



Lomandra multiflora



Indigofera australis



Ozothamnus diosmifolius

Cumberland Plain Planting

Species	Common Name	Mature Height	Mature Spread
Banksia spinulosa	Hairpin Banksia	1.5m	0.8m
Cymbopogon refractus	Barbed Wire Grass	1m	0.8m
Dichelachne micrantha	Short Hair Plume Grass	0.4m	0.4m
Grevillea juniperina	Grevillea sp.	0.5m`	0.5m
Grevillea sericea	Grevillea sp.	2m	2m
Doryanthes excelsa	Gynea Lily	1.0m	1.0m
Indigofera australis	Australian Indigo	1.5m	1.5m
Juncus usitatus	Common Rush	0.8m	0.8m
Lomandra filiformis	Wattle Mat-rush	0.5m	0.5m
Lomandra multiflora	Many flowered Mat-rush	0.8m	0.3m
Ozothamnus diosmifolius	Rice Flower	0.5m	0.5m
Themeda triandra	Kangaroo grass	1.2m	0.8m
Wahlenbergia gracilis	Tea Tree Hybrid	0.8m	0.5m



Callistemon 'Little John'



Ctenanthe 'Silver-Maroon'



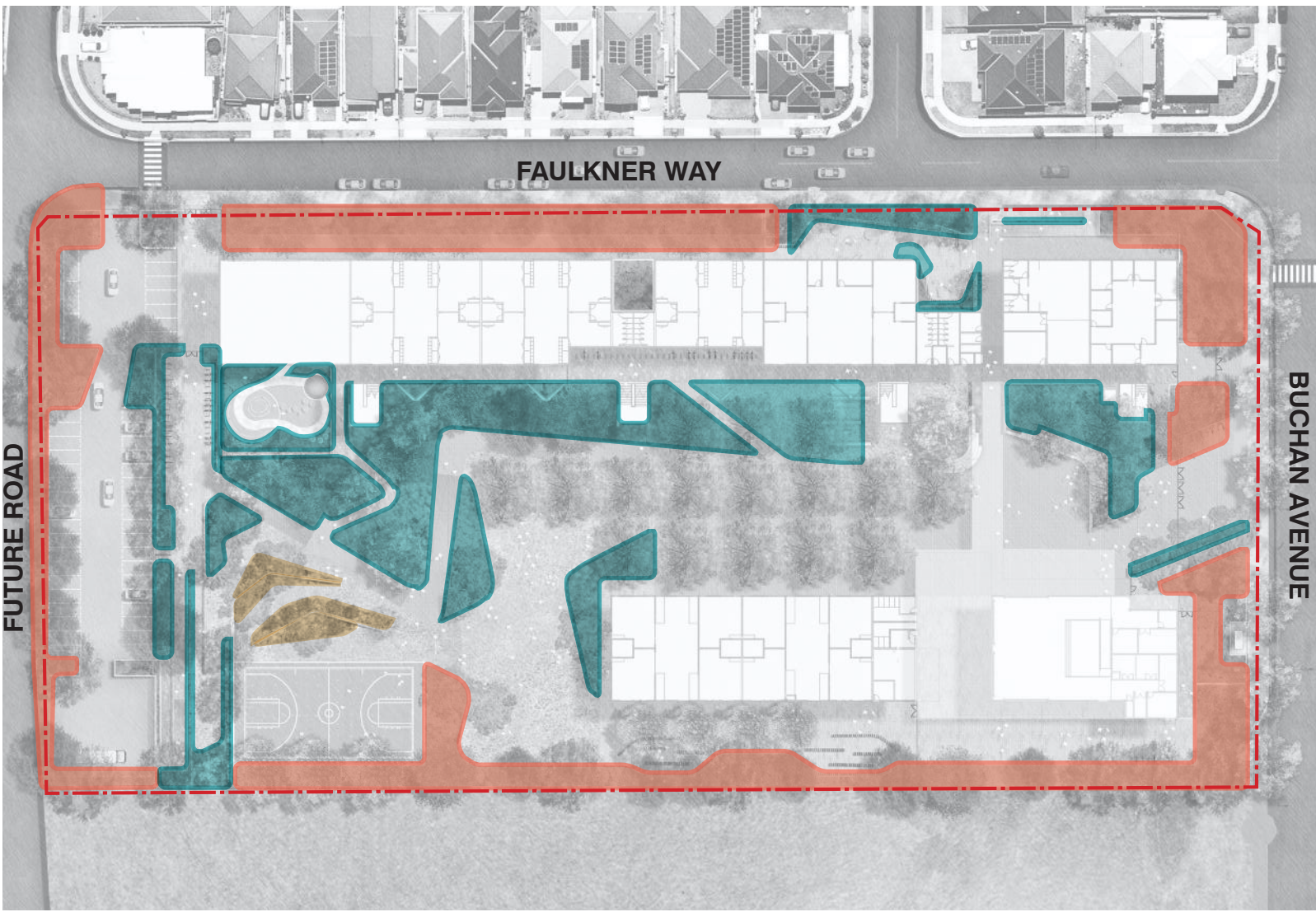
Dianella caerulea



Doryanthes excelsa



Echinacea purpurea



Helianthus annuus



Hibbertia scandens



Lavandula dentata



Leptospermum Pink Cascade



Trachelospermum jasminoides

Planning Secretary’s Environmental Assessment

Items to Address	Design Reponse
4. Tree Removal and Landscaping	
Provide a detailed site-wide landscape strategy that:	
Details the proposed site planting, including location, number and species of planting, heights of trees at maturity and proposed canopy cover	The planting type locations, species and heights at maturity have been included in the Indicative Plant Schedule. The canopy cover target for the proposed site is 40%.
Considers equity and amenity of outdoor play spaces, and integration with built form, security, shade, topography and existing vegetation	1. The design has responded to EFSG requirements for open play space (10m2 per student) whilst accommodating a variety of open space typologies 2. The landscape responded to the built form through the allowance of obstacle free pedestrian movement along the building front, spill out areas and clear access corridors from building entrance points towards open space and function outdoor areas 3. Security has been integrated into the design through perimeter fencing which allows for seperate School and Community access points to accommodate out of hours use of the hall 4. The proposed design has achieved 40% canopy cover to meet SDRP requirements and provide shade in open space areas. 5. The vegetation on site is scarce and pre-existing trees have been removed leaving an open grass area
Demonstrate how the proposed development will:	
Contribute to long term landscape setting in respect of the site and the streetscape	The design has focused on capturing a natural landscape setting which reflects the Cumberland Plain Woodland character of the site. Endemic vegetation along perimeter edges will create a visual and ecological corridor connection to Clermont Park and the Reserve. Through the introduction of Cumberland Plain Woodland into the landscape the design responds symbolically to the living and cultural heritage of the site and connection to country. The main access gateway into the site along Buchan Avenue provides a clear visual connection to the street front and Clermont Park. Perimeter planting creates a buffer zone and streetscape setting for the school
Mitigate the urban heat island effect and ensure appropriate comfort levels on-site.	The planting strategy is based on creating a green and coherent network of spaces which provide shelter from the sun, reduction in heat temperatures and a comfortable microclimate environment for students. Diversity and distinctive planting typologies contribute to the relationship to functional areas. Trees, Shrubs and groundcover create the three layers of plantng; Trees provide shade, shrubs and groundcover mitigate surface heat and create a cooling effect in the landcape. Air pollution reduction and water management are additional desired outcomes.
Contribute to objectives to increase urban tree canopy cover; A detailed landscape plan prepared by a suitably qualified person	The design has achieved the required 40% canopy coverage to meet Greener Places canopy cover requirements. A tree canopy cover strategy plan has been provided as part of the SSDA Landscape drawings