



SITE CONTEXT - NTS

* PLEASE NOTE: PLANS TO BE READ IN CONJUNCTION
WITH THE FOLLOWING DA DESIGN REPORT PREPARED
BY SCOTT CARVER -
20180199-DR-SSD001 LANDSCAPE DESIGN REPORT [1]

LANDSCAPE - SSDA

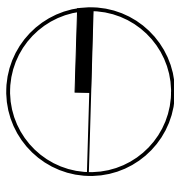
QANTAS GROUP FLIGHT TRAINING CENTRE, 297 KING STREET, MASCOT, 2020

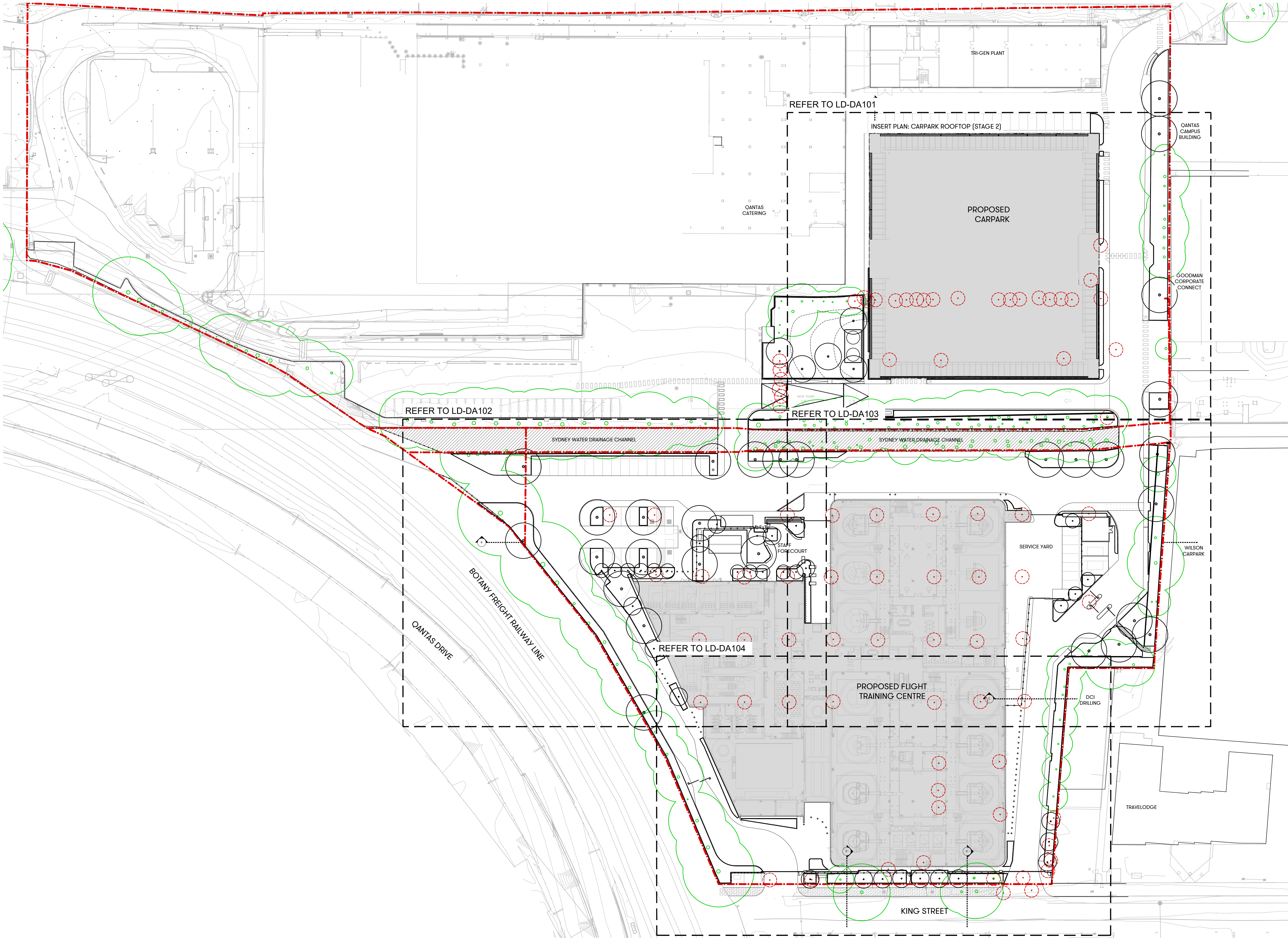
QANTAS
DATE - APRIL 12, 2019

20180199: LANDSCAPE ARCHITECTURAL DRAWING LIST

LANDSCAPE DRAWING REGISTER		
SHEET	SHEET NAME	REVISION
LD-DA000	COVER SHEET	1
LD-DA100	GENERAL ARRANGEMENT LAYOUT	1
LD-DA101	GENERAL ARRANGEMENT 1	1
LD-DA102	GENERAL ARRANGEMENT 2	1
LD-DA103	GENERAL ARRANGEMENT 3	1
LD-DA104	GENERAL ARRANGEMENT 4	1

[Status] FOR SSD APPLICATION		
[Nom. Architect]		Esther Dickens RLA #1053
[File]		20180199-LD-DA100.DWG
[Print Date]		12 April 2019
History		
[Rev#]	[Description]	[Date]
1	For SSDA	12.04.19





[Status] FOR SSD APPLICATION

[Nom. Architect] Esther Dickens
RLA #1053

[File] 20180199-LD-DA100.DWG

[Print Date] 15 April 2019

History

[Rev#]	[Description]	[Date]
1	For SSDA	12.04.19

LEGEND:

- Project Site Boundary
- +RL 0.00 Proposed nominal design levels (Refer Civil)
- +EX 0.00 Existing level
- Proposed 0.5m contour
- Tree to be removed
- Tree to be retained and protected
- Proposed tree
- Sydney Water Channel

Landscape plan to be read in conjunction with the Architectural and Engineers dwgs.

Plans to be read in conjunction with the following reports/ Documentation

- Arboricultural Impact Assessment report by rain Tree Consulting Arboricultural Management
- Geotechnical engineering report
- Site Survey by Veris Australia

For Site levels and architectural information refer to Civil and Architect's drawings respectively.

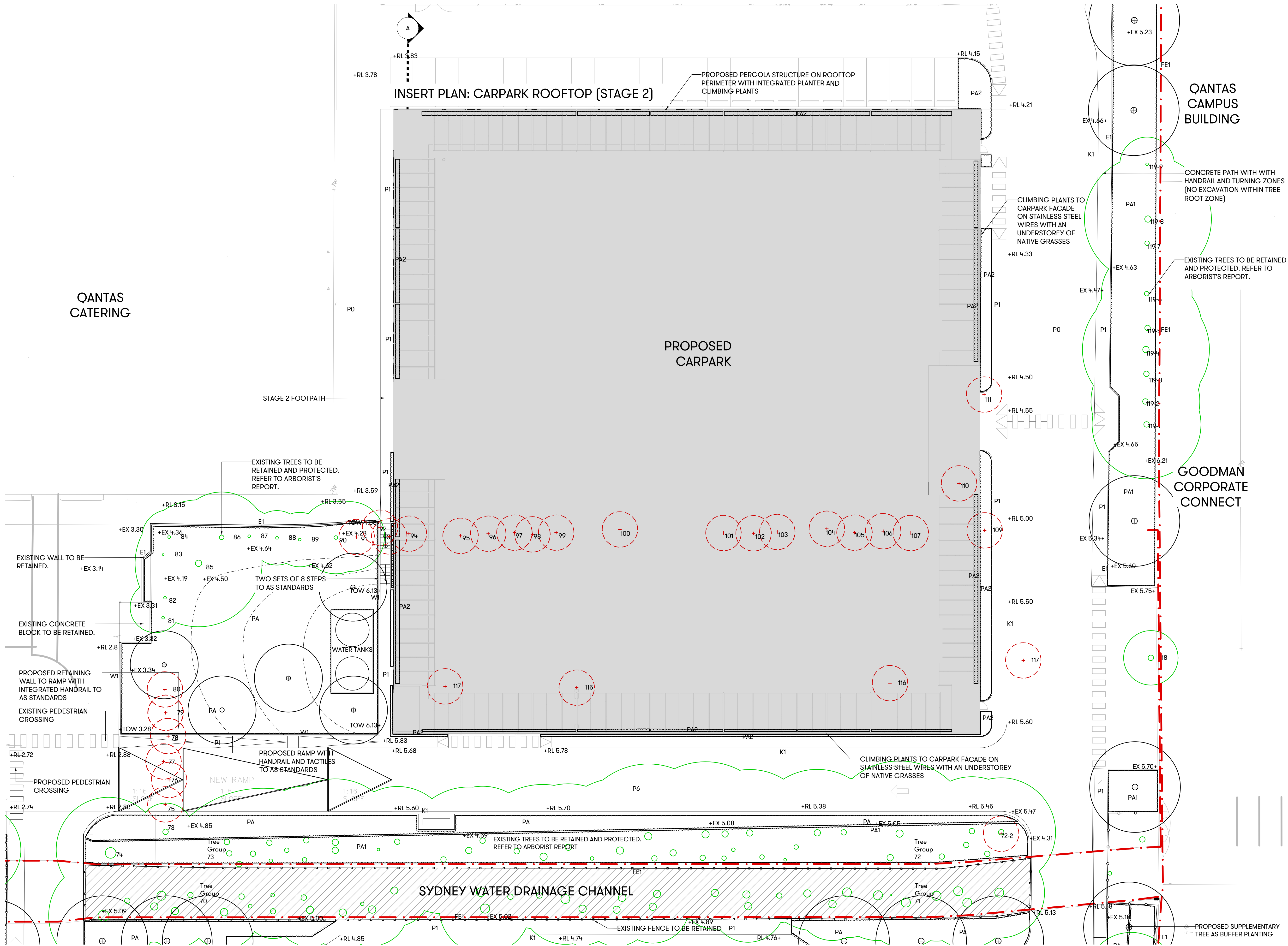
For courtyard and overflow drainage refer to Hydraulic Engineer's drawings

All trees to be retained and are subject to tree protection & management in accordance with relevant Australian standards.

External Lighting and electrical : refer to Engineer's drawings.

Contractor to protect all landscape works during construction including but not exclusive to existing verge.

Levels general : contractor to ensure positive drainage to all pavements, turf and planter areas, install subsoil drainage to planter areas as required.



[Status] FOR SSD APPLICATION		
[Nom. Architect]		Esther Dickens RLA #1053
[File]		20180199-LD-DA100.DWG
[Print Date]		15 April 2019
History		
[Rev#]	[Description]	[Date]
1	For SSDA	12.04.19

LEGEND:	
	Project Site Boundary
	+RL 0.00 Proposed nominal design levels (Refer Civil)
	+EX 0.00 Existing level
	Proposed 0.5m contour
	Tree to be removed
	Tree to be retained and protected
	Proposed tree
	Sydney Water Channel
	Turf
	Planting area
	Existing planting area to be improved with weed control & additional planting
	Planting area with climbers to grow up stainless steel mesh
	Climbing plants
	Road finish to Engineer's drawings
	Paving type 1: concrete path
	Paving type 2: 800x400mm granite pavers
	Paving type 3: 400x200 granite pavers
	Paving type 4: Pre-cast concrete path with no excavation to protect TPZs
	Paving type 5: 400 x 200 granite steppers
	Paving type 6: concrete permeable pavers
	Paving type 7: No fines porous concrete
	Pedestrian gate
	Vehicle gate
	Gravel maintenance path
	Bollard
	Timber bench
	Granite seating block
	Existing fence
	Proposed fence
	Concrete kerb
	Retain existing edge
	Concrete retaining wall

Landscape plan to be read in conjunction with the Architectural and Engineers dwgs.

Plans to be read in conjunction with the following reports/ Documentation

- Arboricultural Impact Assessment report by rain Tree Consulting Arboricultural Management
- Geotechnical engineering report
- Site Survey by Veris Australia

For Site levels and architectural information refer to Civil and Architect's drawings respectively.

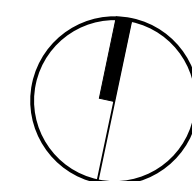
For courtyard and overflow drainage refer to Hydraulic Engineer's drawings

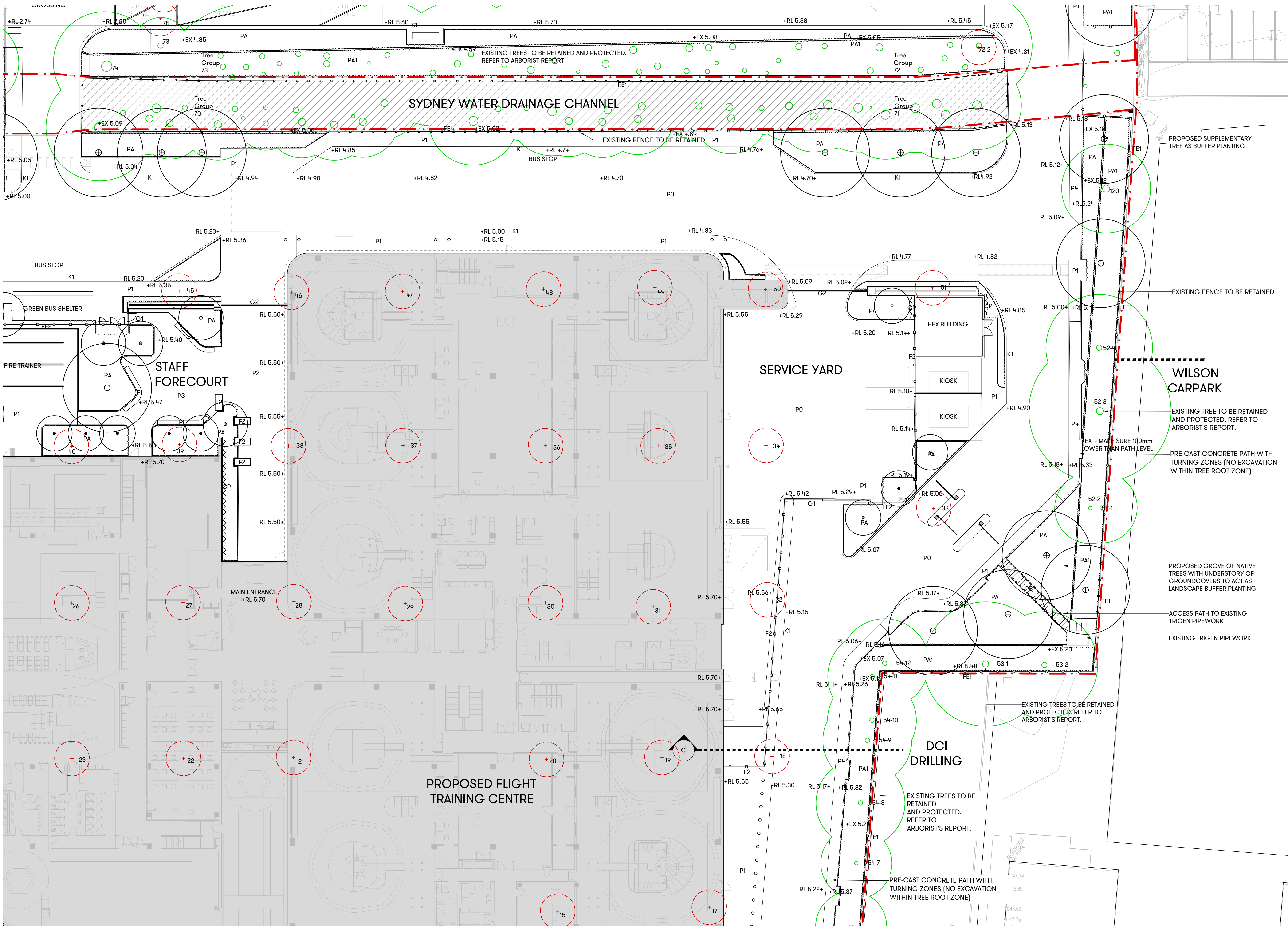
All trees to be retained and are subject to tree protection & management in accordance with relevant Australian standards.

External Lighting and electrical : refer to Engineer's drawings.

Contractor to protect all landscape works during construction including but not exclusive to existing verge.

Levels general : contractor to ensure positive drainage to all pavements, turf and planter areas, install subsoil drainage to planter areas as required.





[Status] FOR SSD APPLICATION

[Nom. Architect] Esther Dickens
RLA #1053

[File] 20180199-LD-DA100.DWG

[Print Date] 15 April 2019

History

[Rev#]	[Description]	[Date]
1	For SSDA	12.04.19

LEGEND:

- Project Site Boundary
- +RL 0.00 Proposed nominal design levels (Refer Civil)
- +EX 0.00 Existing level
- Proposed 0.5m contour
- Tree to be removed
- Tree to be retained and protected
- Proposed tree
- Sydney Water Channel
- Turf
- PA Planting area
- PA1 Existing planting area to be improved with weed control & additional planting
- PA2 Planting area with climbers to grow up stainless steel mesh
- CP Climbing plants
- P0 Road finish to Engineer's drawings
- P1 Paving type 1: concrete path
- P2 Paving type 2: 800x400mm granite pavers
- P3 Paving type 3: 400x200 granite pavers
- P4 Paving type 4: Pre-cast concrete path with no excavation to protect TPZs
- P5 Paving type 5: 400 x 200 granite steppers
- P6 Paving type 6: concrete permeable pavers
- P7 Paving type 7: No fines porous concrete
- G1 Pedestrian gate
- G2 Vehicle gate
- GR Gravel maintenance path
- o o o Bollard
- F1 Timber bench
- F2 Granite seating block
- FE1 Existing fence
- FE2 Proposed fence
- K1 Concrete kerb
- E1 Retain existing edge
- W1 Concrete retaining wall

Landscape plan to be read in conjunction with the Architectural and Engineers dwgs.

Plans to be read in conjunction with the following reports/ Documentation

- Arboricultural Impact Assessment report by rain Tree Consulting Arboricultural Management
- Geotechnical engineering report
- Site Survey by Veris Australia

For Site levels and architectural information refer to Civil and Architect's drawings respectively.

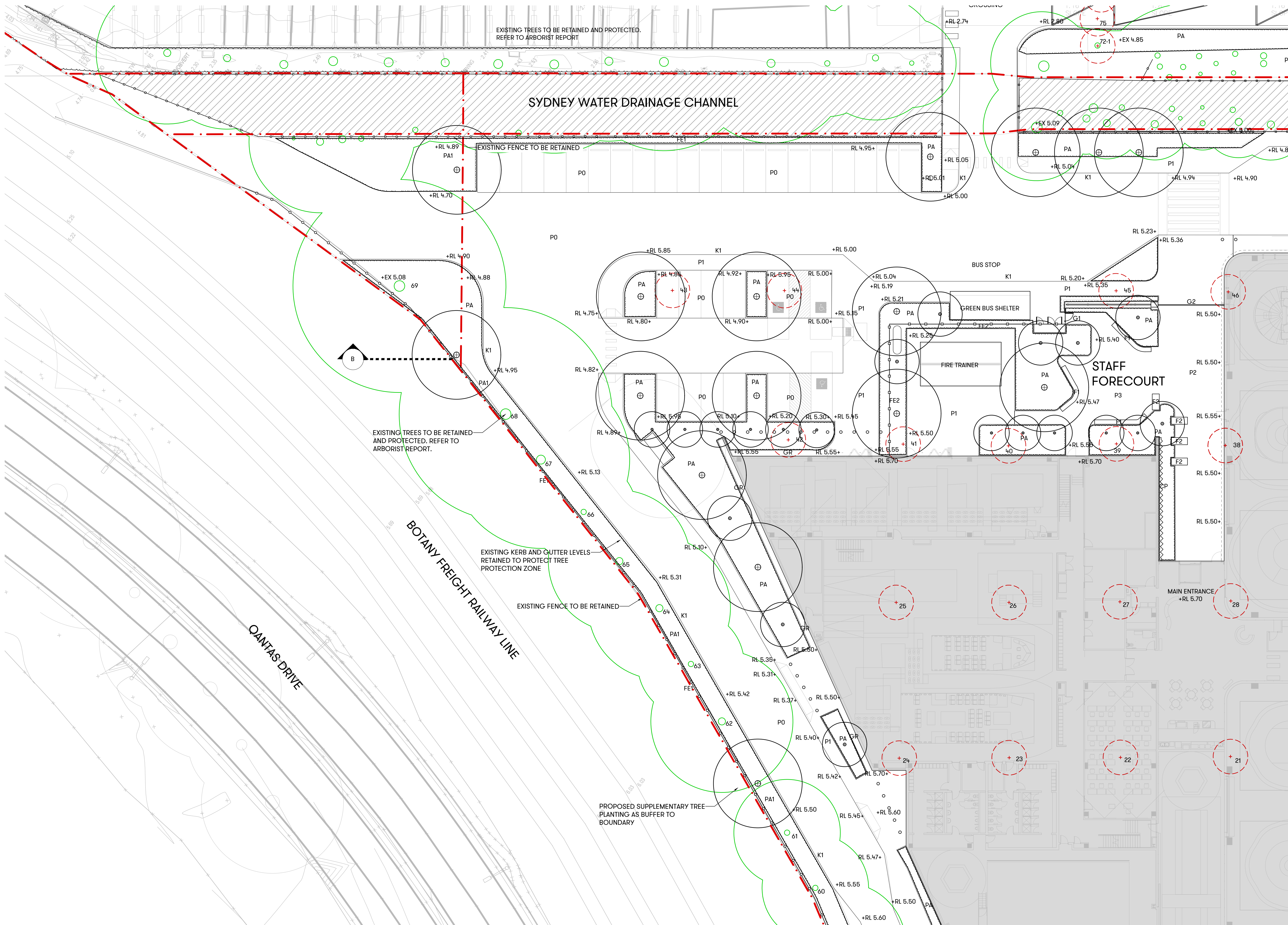
For courtyard and overflow drainage refer to Hydraulic Engineer's drawings

All trees to be retained and are subject to tree protection & management in accordance with relevant Australian standards.

External Lighting and electrical : refer to Engineer's drawings.

Contractor to protect all landscape works during construction including but not exclusive to existing verge.

Levels general : contractor to ensure positive drainage to all pavements, turf and planter areas, install subsoil drainage to planter areas as required.



[Status] FOR SSD APPLICATION		
[Nom. Architect]		Esther Dickens RLA #1053
[File]		20180199-LD-DA100.DWG
[Print Date]		12 April 2019
History		
[Rev#]	[Description]	[Date]
1	For SSDA	12.04.19

LEGEND:	
	Project Site Boundary
	+RL 0.00 Proposed nominal design levels (Refer Civil)
	+EX 0.00 Existing level
	Proposed 0.5m contour
	Tree to be removed
	Tree to be retained and protected
	Proposed tree
	Sydney Water Channel
	Turf
	Planting area
	Existing planting area to be improved with weed control & additional planting
	Planting area with climbers to grow up stainless steel mesh
	Climbing plants
	Road finish to Engineer's drawings
	Paving type 1: concrete path
	Paving type 2: 800x400mm granite pavers
	Paving type 3: 400x200 granite pavers
	Paving type 4: Pre-cast concrete path with no excavation to protect TPZs
	Paving type 5: 400 x 200 granite steppers
	Paving type 6: concrete permeable pavers
	Paving type 7: No fines porous concrete
	Pedestrian gate
	Vehicle gate
	Gravel maintenance path
	Bollard
	Timber bench
	Granite seating block
	Existing fence
	Proposed fence
	Concrete kerb
	Retain existing edge
	Concrete retaining wall

Landscape plan to be read in conjunction with the Architectural and Engineers dwgs.

Plans to be read in conjunction with the following reports/ Documentation

- **Arboricultural Impact Assessment report** by rain Tree Consulting Arboricultural Management
- **Geotechnical engineering report**
- **Site Survey by Veris Australia**

For Site levels and architectural information refer to Civil and Architect's drawings respectively.

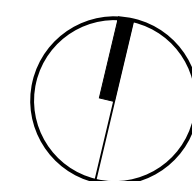
For courtyard and overflow drainage refer to Hydraulic Engineer's drawings

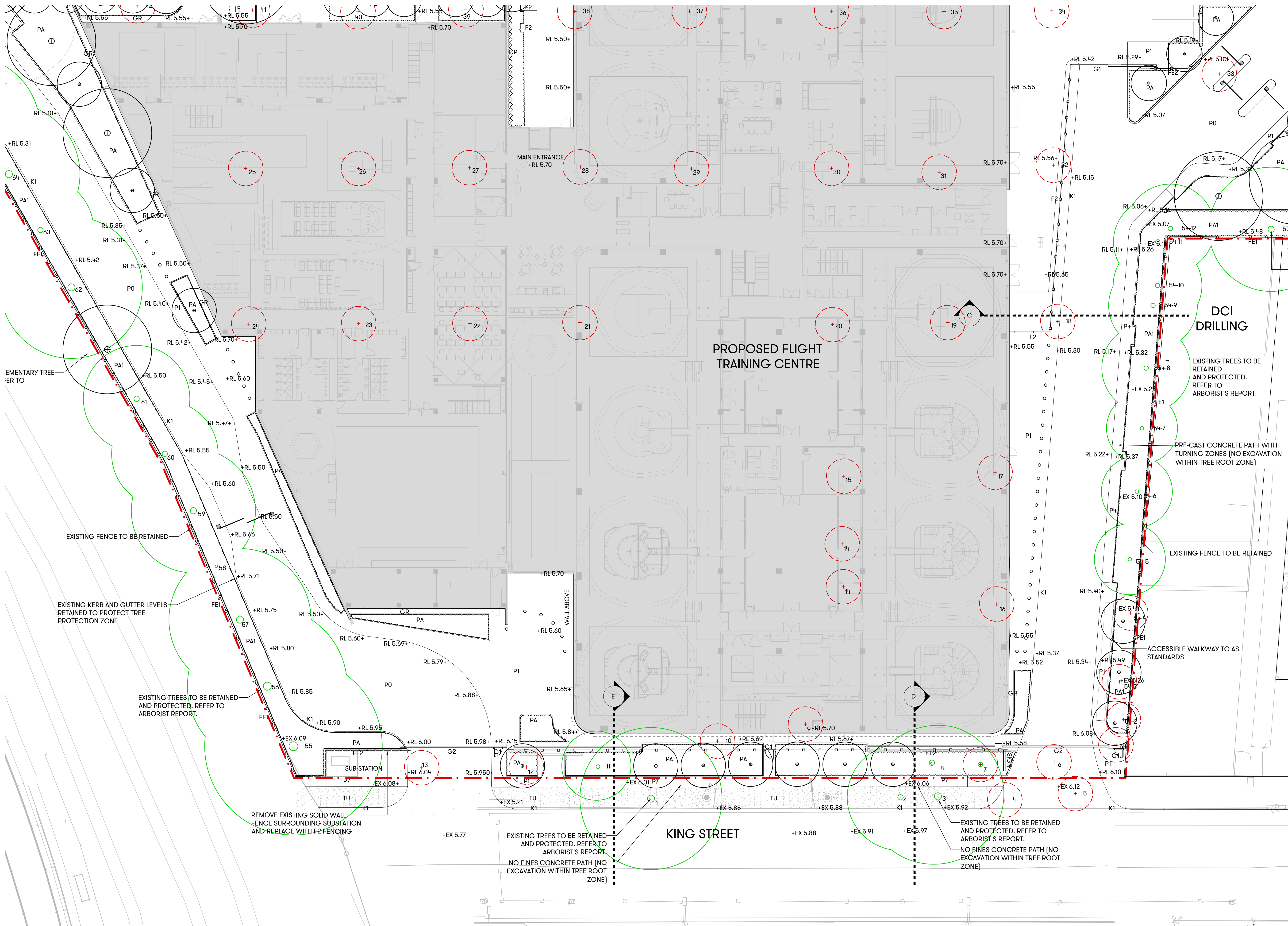
All trees to be retained and are subject to tree protection & management in accordance with relevant Australian standards.

External Lighting and electrical : refer to Engineer's drawings.

Contractor to protect all landscape works during construction including but not exclusive to existing verge.

Levels general : contractor to ensure positive drainage to all pavements, turf and planter areas, install subsoil drainage to planter areas as required.





[Status] FOR SSD APPLICATION		
[Nom. Architect]		Esther Dickens RLA #1053
[File]		20180199-LD-DA100.DWG
[Print Date]		12 April 2019
History		
[Rev#]	[Description]	[Date]
1	For SSDA	12.04.19

- LEGEND:
- Project Site Boundary
 - +RL 0.00 Proposed nominal design levels (Refer Civil)
 - +EX 0.00 Existing level
 - Proposed 0.5m contour
 - Tree to be removed
 - Tree to be retained and protected
 - Proposed tree
 - Sydney Water Channel
 - TU Turf
 - PA Planting area
 - PA1 Existing planting area to be improved with weed control & additional planting
 - PA2 Planting area with climbers to grow up stainless steel mesh
 - CP Climbing plants
 - P0 Road finish to Engineer's drawings
 - P1 Paving type 1: concrete path
 - P2 Paving type 2: 800x400mm granite pavers
 - P3 Paving type 3: 400x200 granite pavers
 - P4 Paving type 4: Pre-cast concrete path with no excavation to protect TPZs
 - P5 Paving type 5: 400 x 200 granite steppers
 - P6 Paving type 6: concrete permeable pavers
 - P7 Paving type 7: No fines porous concrete
 - G1 Pedestrian gate
 - G2 Vehicle gate
 - GR Gravel maintenance path
 - Bollard
 - F1 Timber bench
 - F2 Granite seating block
 - FE1 Existing fence
 - FE2 Proposed fence
 - K1 Concrete kerb
 - E1 Retain existing edge
 - W1 Concrete retaining wall
- Landscape plan to be read in conjunction with the Architectural and Engineers dwgs.

- Plans to be read in conjunction with the following reports/ Documentation
- Arboricultural Impact Assessment report by rain Tree Consulting Arboricultural Management
 - Geotechnical engineering report
 - Site Survey by Veris Australia

For Site levels and architectural information refer to Civil and Architect's drawings respectively.

For courtyard and overflow drainage refer to Hydraulic Engineer's drawings

All trees to be retained and are subject to tree protection & management in accordance with relevant Australian standards.

External Lighting and electrical : refer to Engineer's drawings.

Contractor to protect all landscape works during construction including but not exclusive to existing verge.

Levels general : contractor to ensure positive drainage to all pavements, turf and planter areas, install subsoil drainage to planter areas as required.

