

25 May 2020

Rob Beckett
Environmental Assessment Officer
Energy, Resources and Compliance
Department of Planning, Industry and
Environment
Locked Bag 5022
PARRAMATTA NSW 2124



Rob.Beckett@planning.nsw.gov.au
Cc: cliona.gormley@frv.com
mark.love@frv.com

Dear Rob,

Re: Walla Walla Solar Farm RTS Supplementary Information

I refer to FRV's meeting with the Department on Tuesday 12 May 2020 requesting further clarification on several items relating to the assessment of Walla Walla Solar Farm (SSD 9874). In response to the Department's comments regarding potential visual impacts on Orange Grove Gardens (R5a), FRV has amended the proposal's design, which would now have a development footprint of approximately 421 ha. A 1.8km setback from R5a to the nearest PV solar array has been implemented into the design. The proposed 50m wide vegetation screening has also been retained in the design which will not only provide further visual screening but also enhance ecology by connecting existing mature vegetation to provide wildlife corridors.

Under the new layout design provided in Appendix A of this letter, the proposed 300 megawatt (MW) alternating current (AC) solar farm would comprise the following:

- Approximately 700,000 PV solar arrays mounted on single axis tracking systems
- Approximately 76 inverter stations.
- 15 additional paddock trees retained.
- Approximately 94.7 ha cropping land retained.

The construction haulage route, number of vehicle movements and method of construction with vehicles entering the development site at a single-entry point remain consistent with the traffic impact assessment provided in section 6.6 of the EIS. The construction haulage route is shown in an updated constraints map Appendix B.

FRV provided a revised Aboriginal Cultural Heritage Assessment Report (ACHAR) with the Response to Submissions Report to the Department on 1 April 2020. Aboriginal heritage sites located within the development site are detailed in this ACHAR, with management measures provided in section 6.9 of the EIS. The management measures for Aboriginal heritage have not changed as a result of changes to the proposal's design (Appendix A). The two areas of potential artefact deposits (PADs), three cultural tree and two scarred trees would be avoided by the development and clearly fenced off over the life of the project. Aboriginal heritage sites are clearly shown in Figure 6-30 of the EIS and the updated constraints map (Appendix B).



WAGGA WAGGA

Suite 1, 39 Fitzmaurice Street (PO Box 5464) Wagga Wagga NSW 2650

T. (02) 6971 9696 E. nggh@ngghconsulting.com.au W. www.ngghconsulting.com.au

BEGA • BRISBANE • CANBERRA • GOLD COAST • NEWCASTLE • SYDNEY • WAGGA WAGGA

ABN 31 124 444 622 ACN 124 444 622

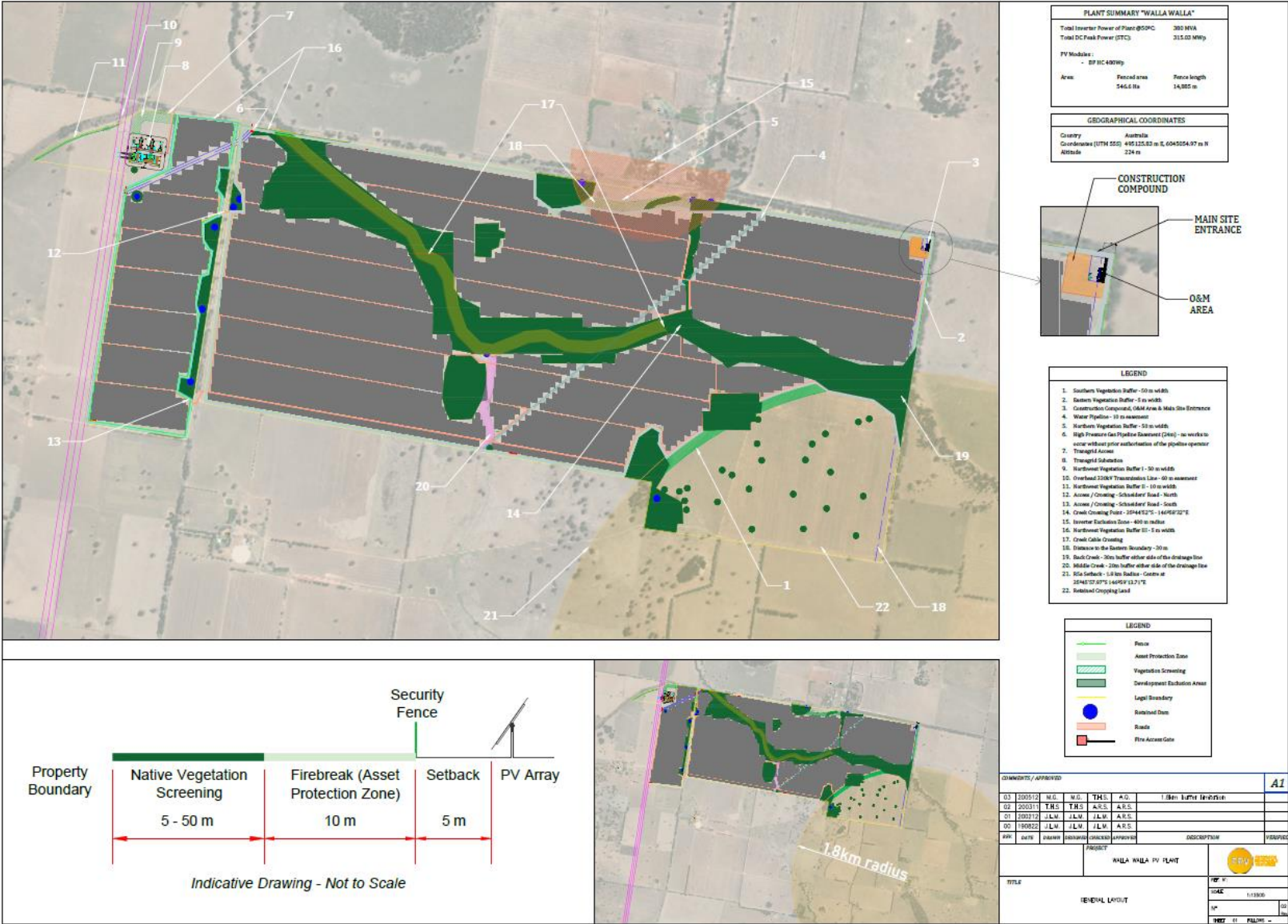
I trust the information provided will enable you to complete the assessment of this proposal, however, should you require any additional clarification please do not hesitate to contact me.

Yours sincerely,



Bridgette Poulton
Environmental Consultant
(02) 6923 1564
NGH

Appendix A Infrastructure layout



Appendix B Constraints map

