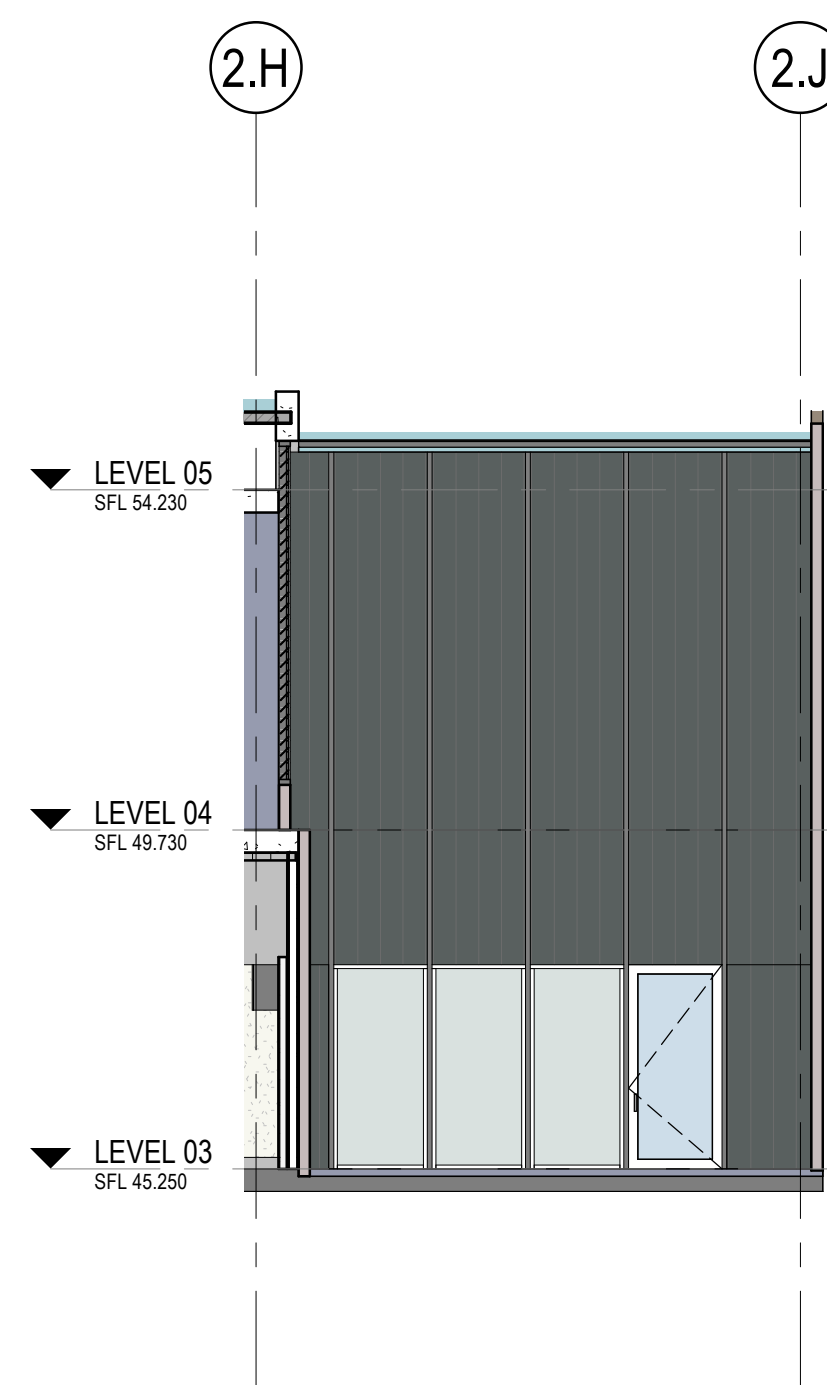
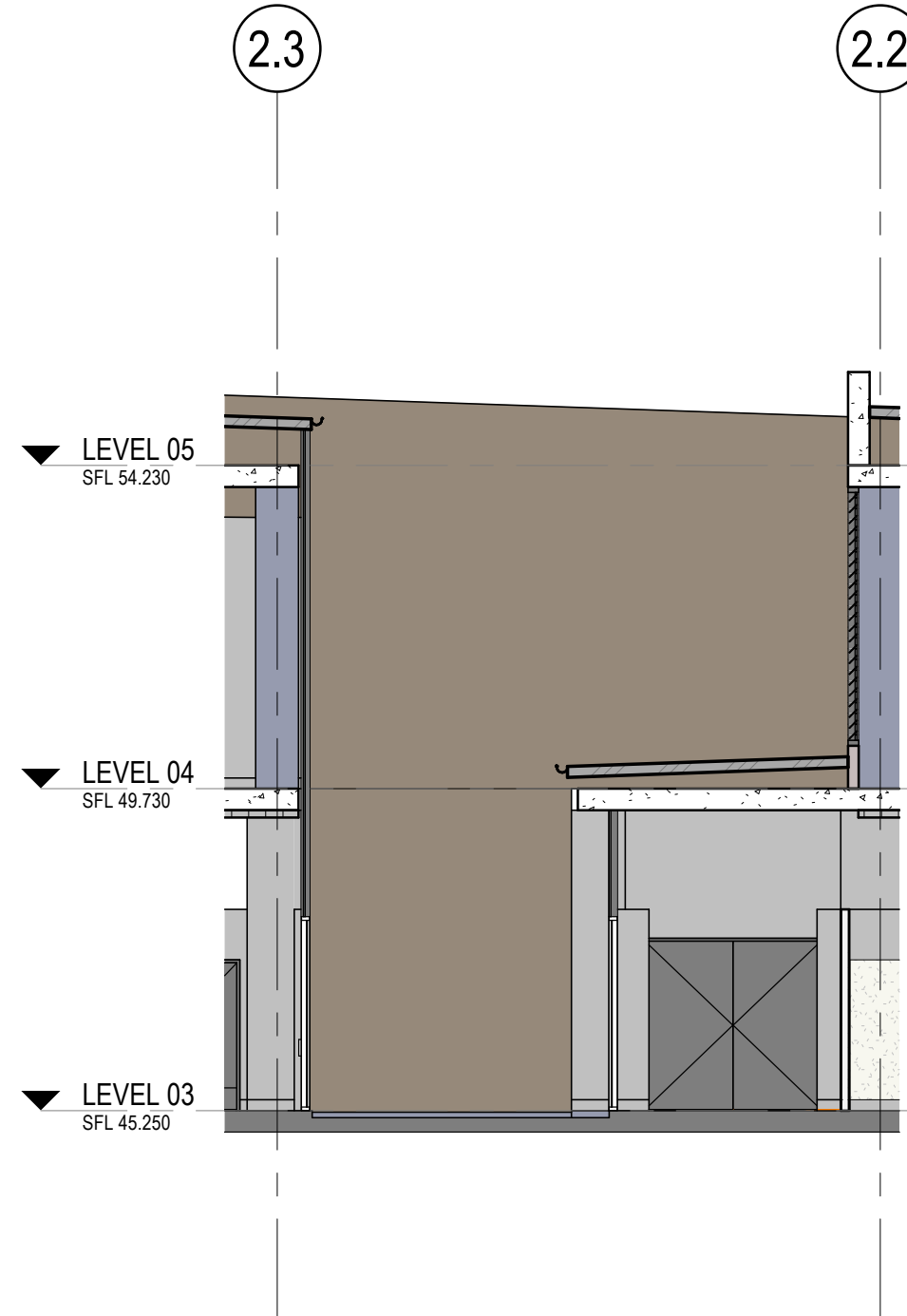


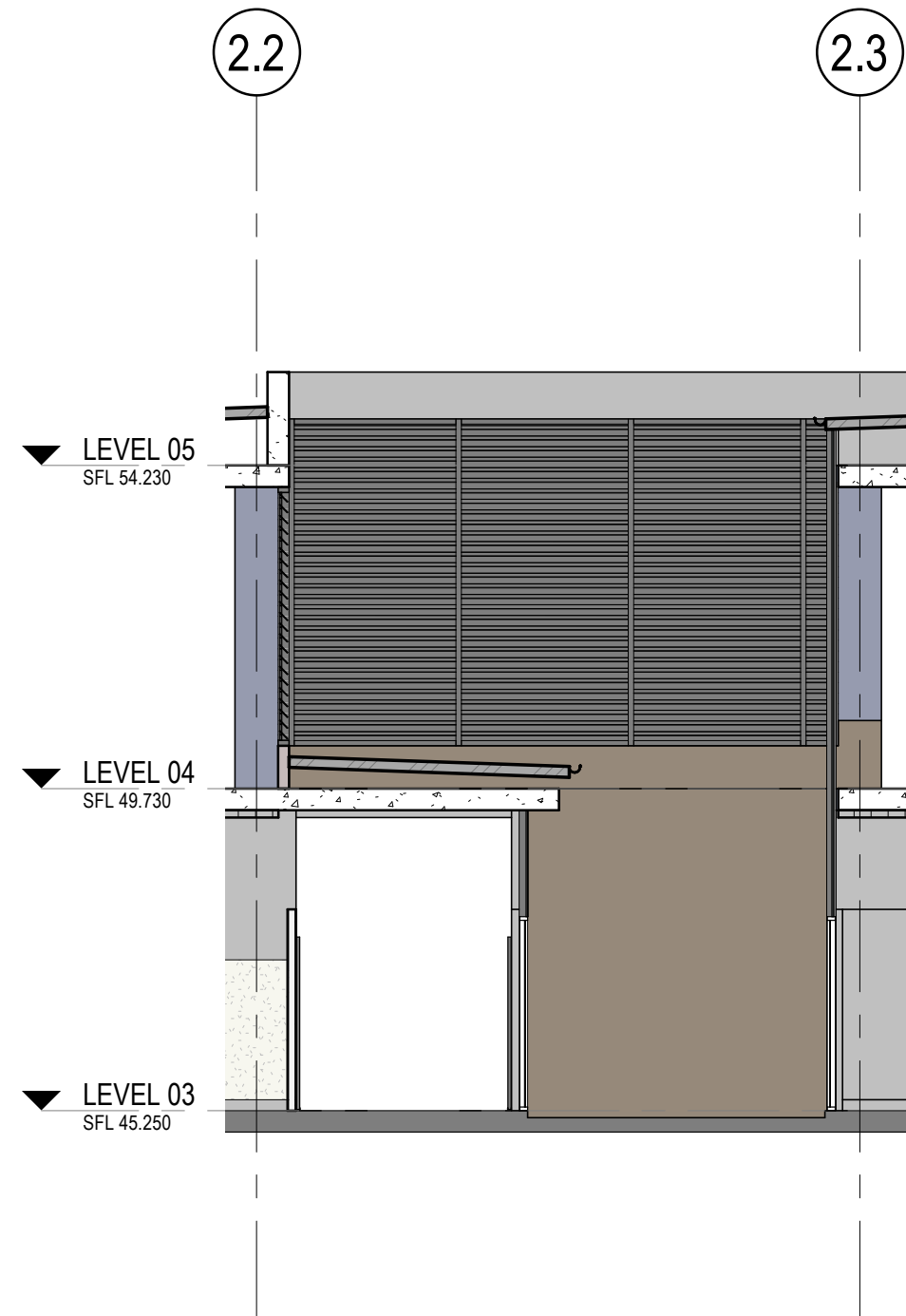
1 WEST ELEVATION SCOPING
1 : 100



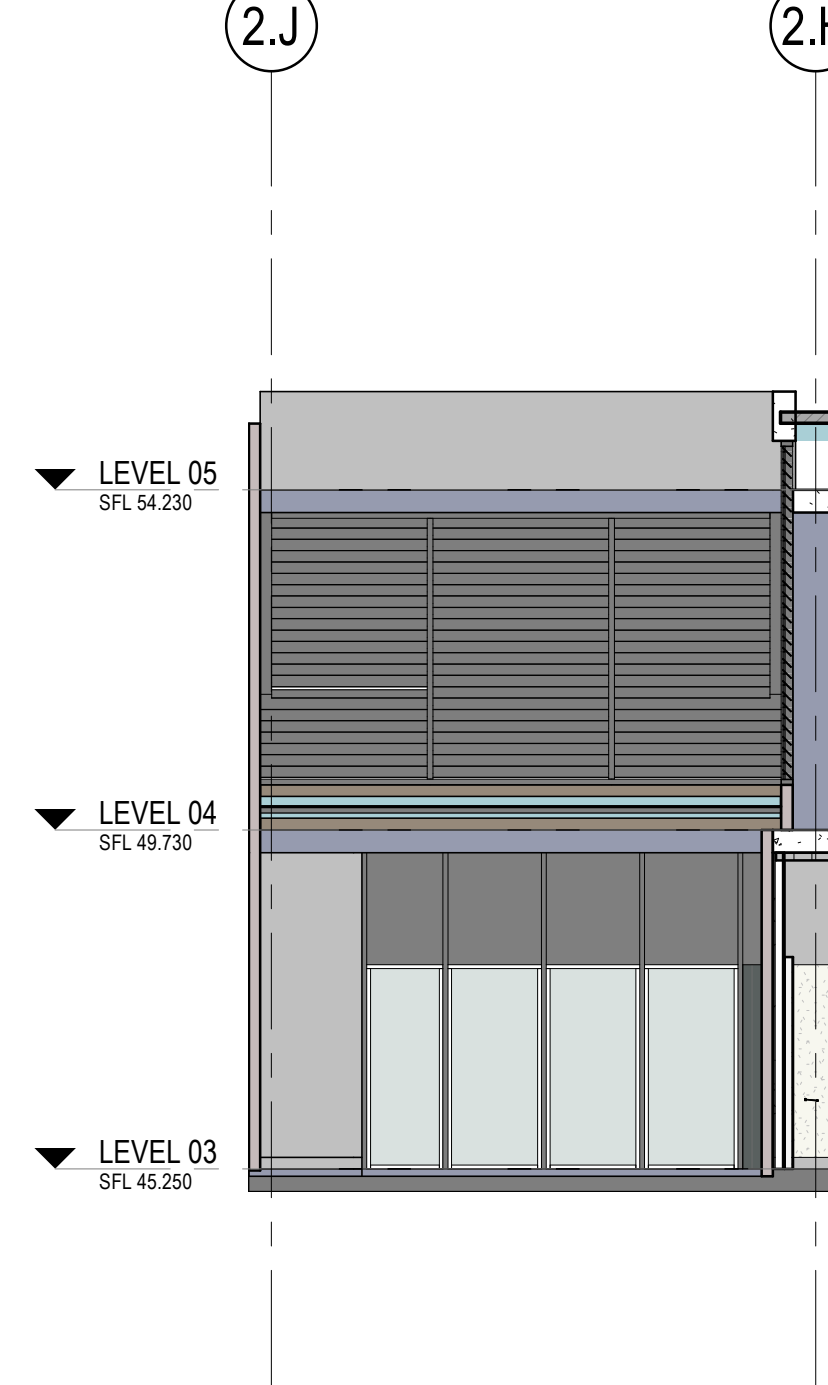
2 COURTYARD NORTH
1 : 100



3 COURTYARD WEST
1 : 100



4 COURTYARD SOUTH
1 : 100



5 COURTYARD EAST
1 : 100

NORTH POINT				
THIS DOCUMENT IS THE COPYRIGHT OF HDR. ALL INFORMATION ILLUSTRATED ON THIS DOCUMENT IS TO BE CHECKED AND VERIFIED ON SITE. IN THE EVENT OF DISCREPANCIES REFER TO ARCHITECT PRIOR TO COMMENCEMENT OF THE WORK. DO NOT SCALE DRAWINGS MANUALLY OR ELECTRONICALLY.				
REV	DESCRIPTION OF CHANGE	CHECKED BY	ISSUED BY	DATE
1	FOR 50% DD	DS	SJ	30/09/20
2	WIP 75% ISSUE	AB	DS	09/12/20

GENERAL NOTES AND LEGENDS

1. REFER FINISHES SCHEDULE

GLZ01	GLZ01
GLZ02	GLZ02
BRK01	BRK01
CAP01	CAP01
CLD01	CLD01
CLD02	CLD02
CLD03	CLD03
CLD04	CLD04
CON01	CON01
LVR01	LVR01
LVR02	LVR02
MF01	MF01
MR01	MR01
RWF01	RWF01
RWF02	RWF02
SHD01	SHD01
EXISTING	EXISTING

PROJECT MANAGEMENT

CBRE
LEVEL 12, 363 GEORGE STREET, SYDNEY,
NSW, AUSTRALIA, 2000. 612 9333 3333.
<http://www.cbre.com.au/>

CLIENT

NSW Health
GOVERNMENT Infrastructure
Level 6 77 Pacific Highway, North Sydney, NSW 2060
P: +61 2 9978 5427 | F: +61 2 8904 1377
www.hinfra.health.nsw.gov.au

ARCHITECTS

HDR
Level 1, 110 Walker Street, North Sydney NSW 2060, Australia
+61 2 9956 2666 | hdrinc.com
HDR Pty. Limited ABN 76 158 075 220 trading as HDR

PROJECT
**THE SUTHERLAND HOSPITAL
OPERATING THEATRE UPGRADE
KINGSWAY & KAREENA ROAD,
CARINGBAH NSW 2229**

DRAWING TITLE

SCOPING ELEVATION - WEST

STATUS

DESIGN DEVELOPMENT

DRAWN BY SJ	CHECKED BY AB	APPROVED BY DS
SCALE 1 : 100 @ A1	DATE 09/12/20	
PROJECT NUMBER 10192314	DRAWING NUMBER 150600	ISSUE 2

PRELIMINARY