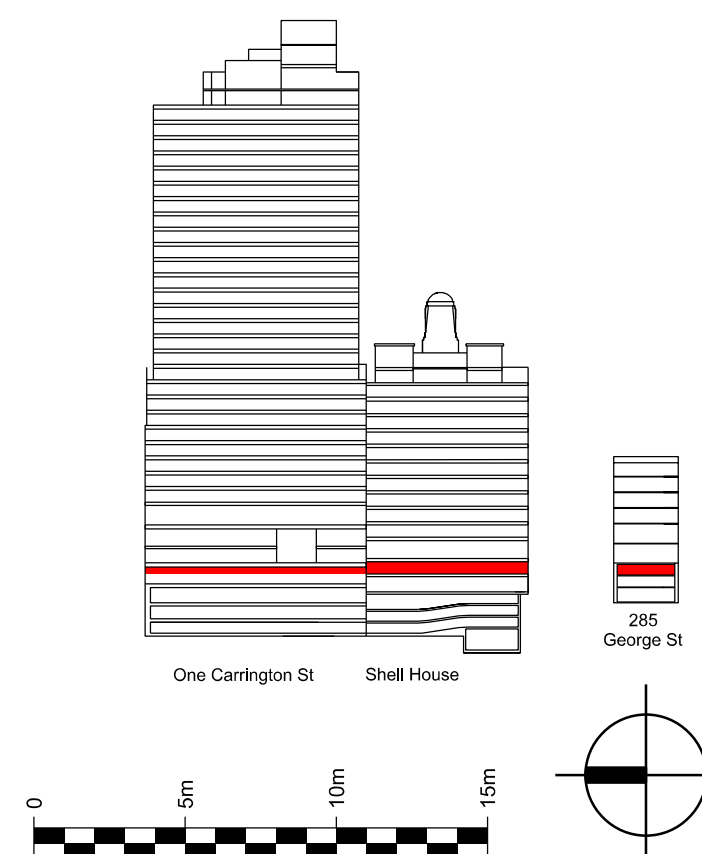


- 01: Triple height space
- 02: Retail
- 03: Retail below
- 04: Plant / Services
- 05: Loading Dock Below
- 06: Access to Wynyard Lane
- 07: Office Lobby below
- 08: Retail Goods Lifts
- 09: Existing Wynyard Park car park
- 10: Goods Lifts
- 11: Waste
- 12: Refer to public domain drawings
- 13: Existing retail
- 14: Structural Transfer
- 15: Retail Passenger Lifts to Pavilions
- 16: Raised Dock
- 17: Shell House Passenger Lift
- 18: End of Trip Lifts
- 19: Substation Access

- Wynyard and Carrington Link
- Retail
- Circulation
- Core / Stairs / Lifts / Toilets
- Plant / Back of House



Issue	reason for issue	date	checked
Rev 00	Development Application Submission	19.03.14	PS
Rev 01	Issued for TINSW Landowners Consent	28.08.15	PS
Rev 02	S96 Issue	25.09.15	PS
Rev 03	S96 Issue Update	10.03.16	SI
Rev 04	S96 Issue	09.09.16	SI
Rev 05	S4.55 Issue	22.03.19	SI
Rev 06	S4.55 Issue	01.05.19	SI
Rev 07	S4.55.285 George St retail stair and goods lift	27.05.19	SI
Rev 08	S4.55 Issue	04.07.19	SI
Rev 09	S4.55 Issue	08.08.19	SI
Rev 10	For approval	29.10.19	SI

Brookfield

Sovereign Wynyard Centre Pty Limited or its nominee
Level 22,135 King Street
Sydney
NSW 2000
T +612 9322 82

architects

architects
make + architectus™

Make
32 Cleveland Street
London
W1T 4JY
T +44 (0)20 7636 5151
info@makearchitects.com
www.makearchitects.com

Architectus Sydney
Level 18 MLC Centre
19 Martin Place
Sydney NSW 2000
T (61 2) 8252 8400
F (61 2) 8252 8600
sydney@architectus.com.au
ARN 11 098 489 448

project

Wynyard Place

drawing

Wynyard Lane Level

Shell House Margaret Street Level

285 George Street Mezzanine Level

scale 1 : 25

status	drawing no
--------	------------

drawn

DA2007

paper size

A1

checker

project

project no

m: 958 a: 120298.00

Rev 10