

Mr David Lewis
Principal Statutory Planner
Department of Education
Level 8, 259 George Street
SYDNEY NSW 2000

19 July 2021

RE: Mosman High School (SSD-10465) Request for Additional Information

In response to the request from the Department of Planning Industry and Environment for the following:

'justification for not meeting the 28% canopy cover recommended by the Government Architect NSW, noting that this represents a reduction below that in the 'Draft Greener Places Design Guide'

Black Beetle note the following:

The current proposal for Mosman High School includes the planting of 34 new trees and a significant increase of the canopy cover of 3.4%, from 21.2% to a total of 24.6% canopy cover. This percentage equates to an additional 492 square metres of canopy cover.

Due to the current conditions and constraints of the site there are limited opportunities to increase the canopy cover. Considering this, the increase in GFA on the site has required the landscape design proposal to balance the requirements for open play space and the need for canopy cover. The current proposal manages to do both through careful configuration of the landscape spaces on the ground plane and utilisation of terraces on level 3 & 4. The design includes tree planting around the perimeter of the two proposed open play areas (basketball court & lawn) on ground level, replacement tree planting along Military Road and replacement tree planting within the arts courtyard. In addition, tree planting has been maximised on the rooftops (Level 3 & 4) in accordance with structural engineers' guidance and recommendations.

Therefore, there is no further opportunity to increase the tree canopy beyond 24.6% without compromising the provision of playground space and building development.

Furthermore, please find enclosed Tree Canopy Diagrams as submitted with SSDA submission which illustrate the tree plantings.

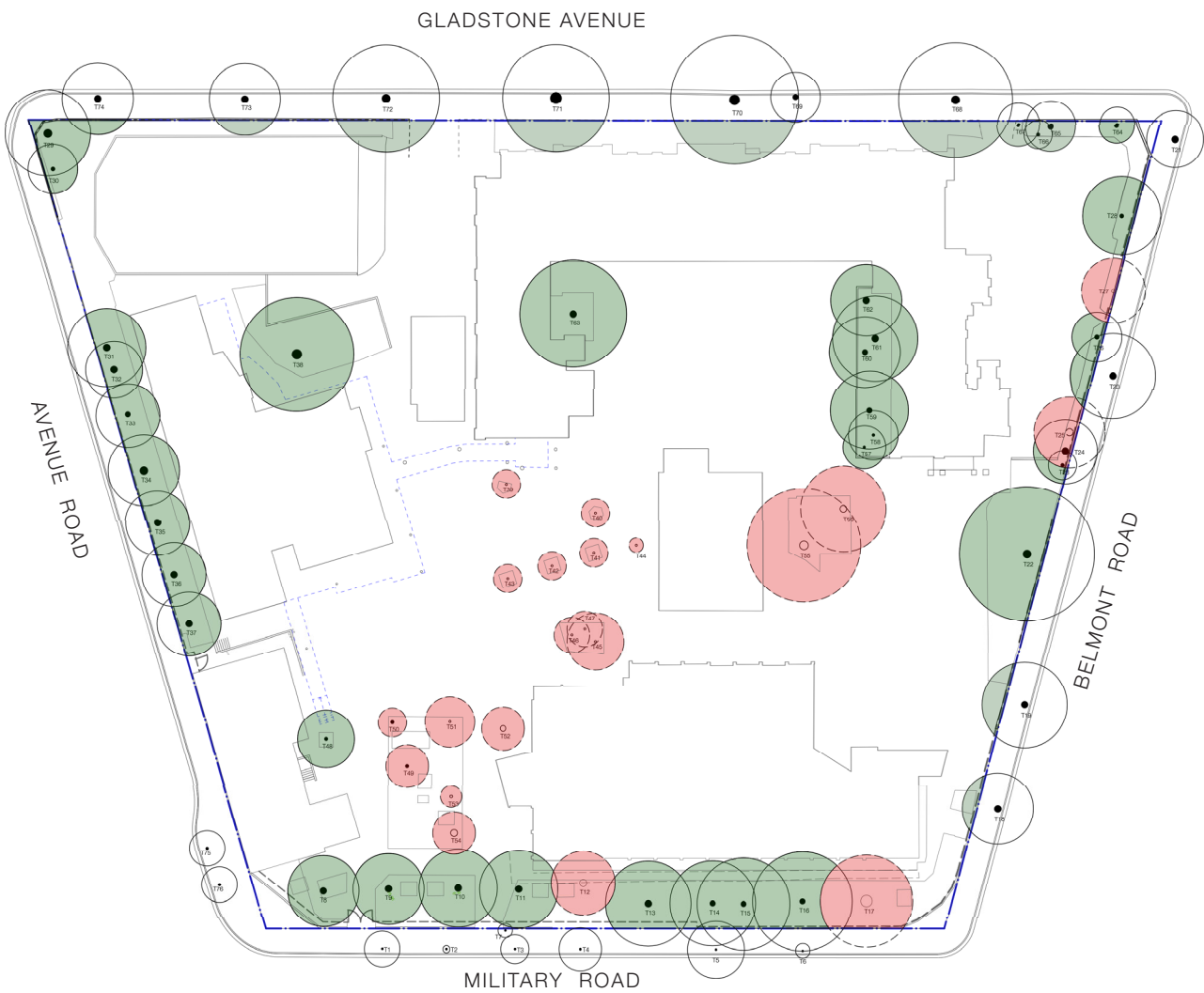
We trust that we have addressed and interpreted your needs and expectations with the above response. If, however, you have any queries, please do not hesitate to contact us directly.

Kind regards,



Giselle Barron

Director & Registered Landscape Architect
Black Beetle Pty Ltd
P: 0418 270 382
E: giselle@blackbeetle.com.au



EXISTING TREE CANOPY

- TREES TO BE RETAINED
 - TREES TO BE REMOVED (Total No. 21)
- (SUBJECT TO ARBORIST ADVICE AND APPROVALS)

TREE QUANTITY CALCULATIONS

| | |
|-----------------------------------|----|
| QTY EXISTING TREES | 76 |
| QTY TREES TO BE REMOVED | 20 |
| QTY TREES REMOVED UNDER REF WORKS | 1 |
| QTY PROPOSED NEW TREES | 34 |
| TOTAL QTY PROPOSED TREES | 89 |



PROPOSED TREE CANOPY

- EXISTING TREES TO BE RETAINED
- PROPOSED TREES (Total No. 34)

TREE CANOPY CALCULATIONS

SITE AREA: 14481sq.m

| | | |
|--------------------------------|-----------|-------|
| EXISTING TREE CANOPY COVER | 3083 sq.m | 21.2% |
| TREE CANOPY TO BE REMOVED | 730 sq.m | 5.0% |
| PROPOSED NEW TREE CANOPY COVER | 1211 sq.m | 8.4% |
| TOTAL PROPOSED CANOPY COVER | 3564 sq.m | 24.6% |