

8.3 ACCESS TO SUNLIGHT

Each apartment type is configured to attain a good level of clear vision glazing, thus providing good access to external daylight. External terraces, at least one per apartment, also allow occupants to sit outside and gain access to daylight.

The adjacent diagram illustrates the period of solar access that each general apartment type receives through a typical winter period and a typical summer period. Generally most apartments receive dual aspect sunlight, benefitting from being located in the petal tips of the building and thus receiving morning and evening sunlight.

A small number of centrally positioned apartments situated on the levels designated for three apartments per floor, located between Level 34 and Level 47, are facing north/north-east, and receive a significant period of unbroken sun travel between the hours of 9AM and 12PM in the winter.

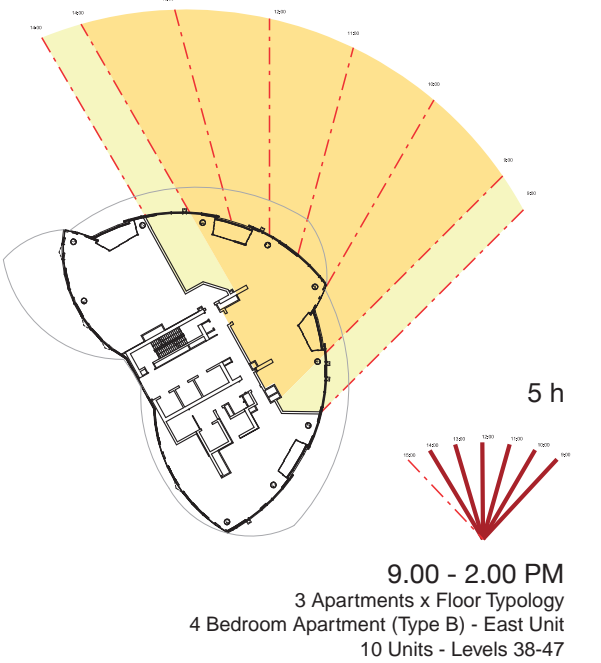
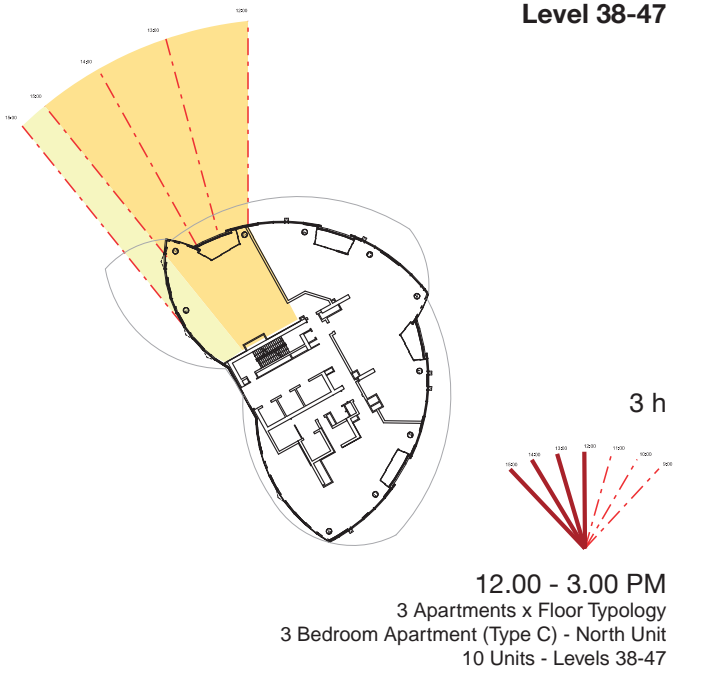
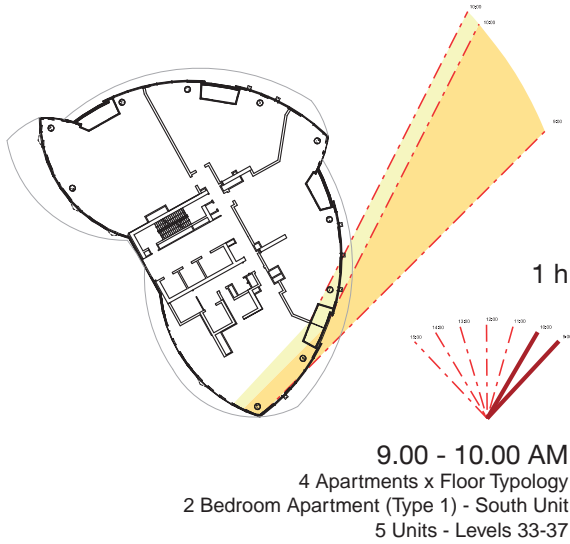
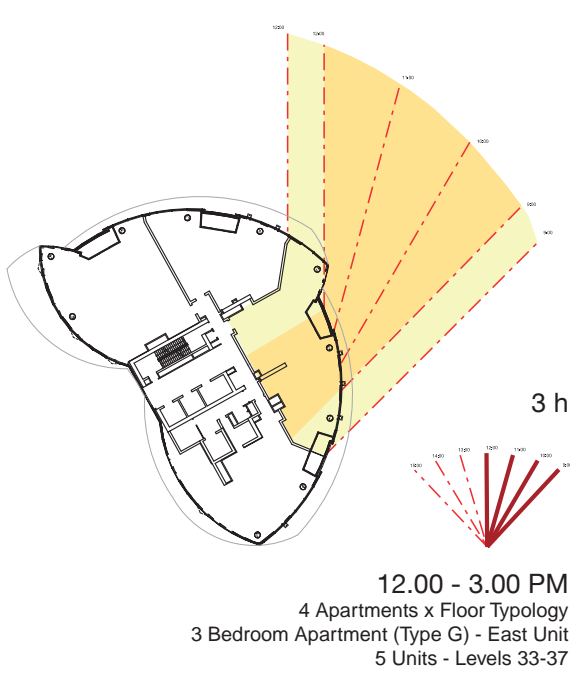
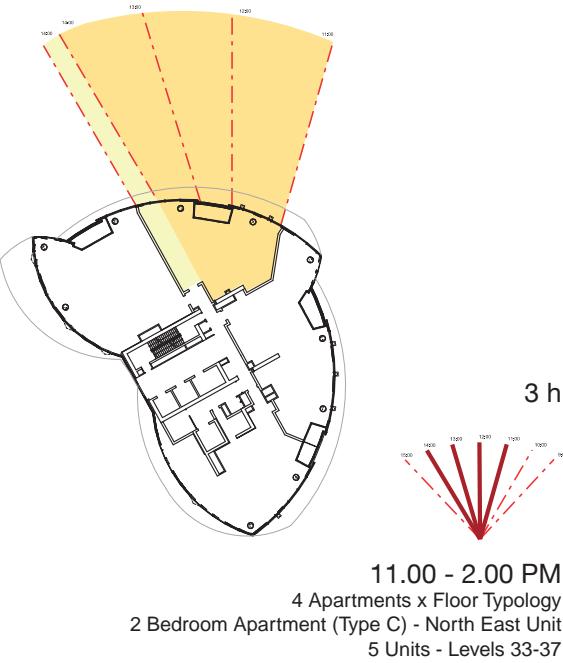
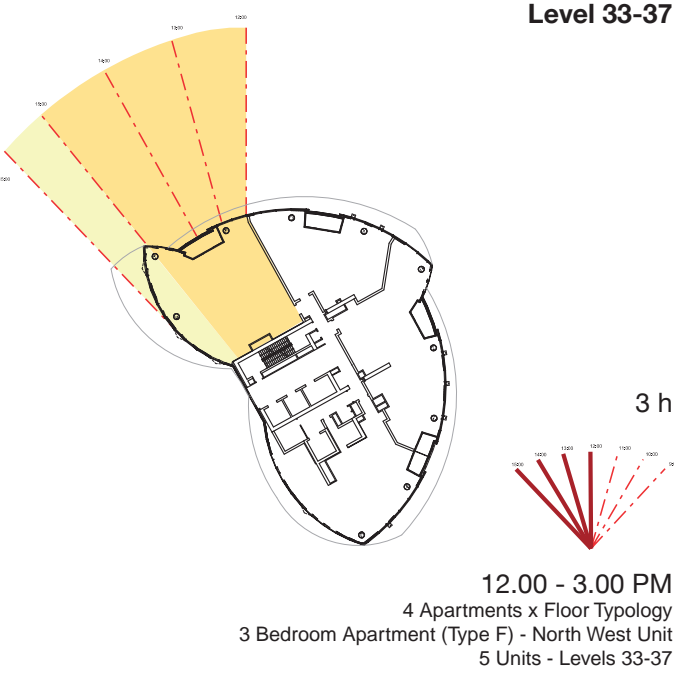
The data related to the sunlight diagrams to be included in the report:

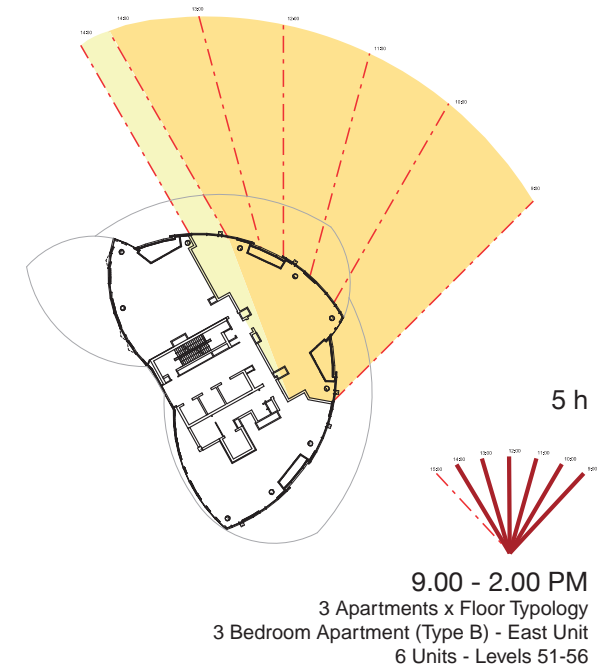
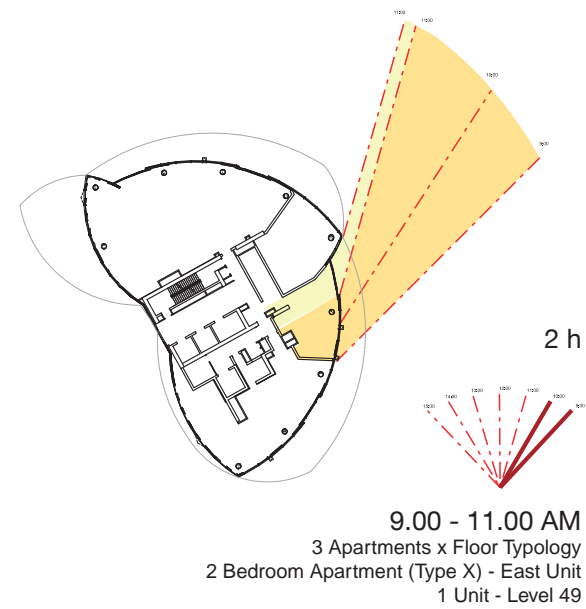
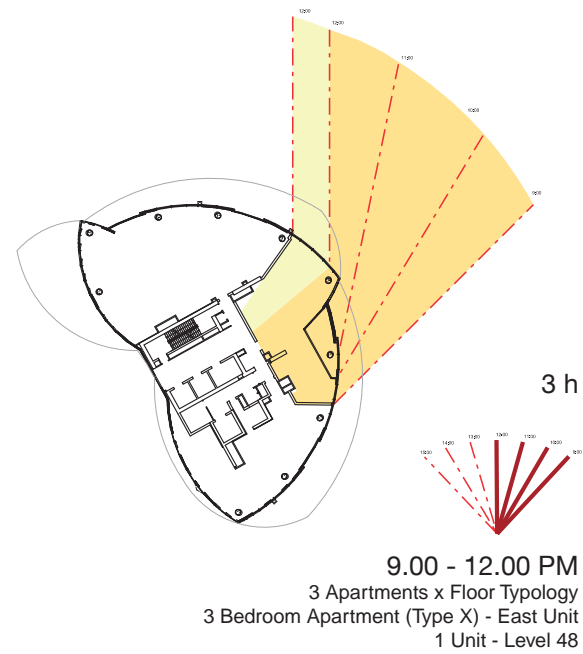
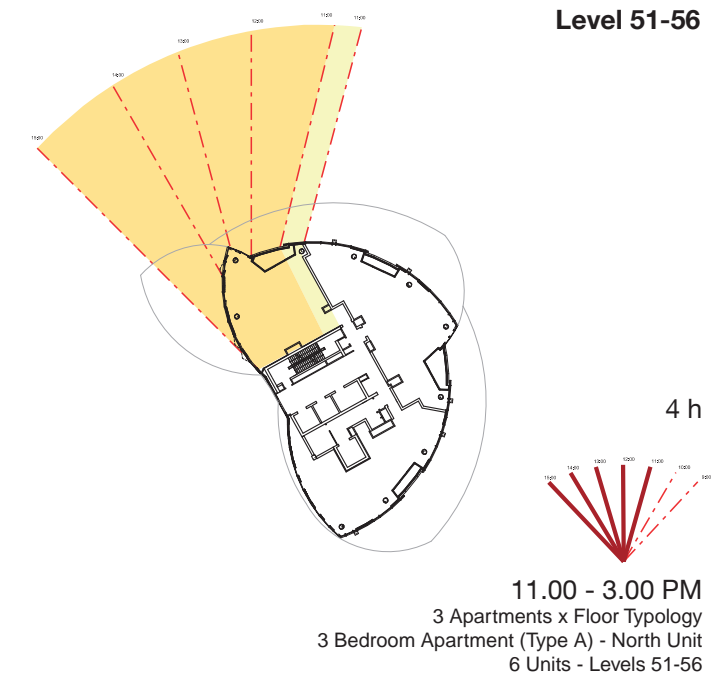
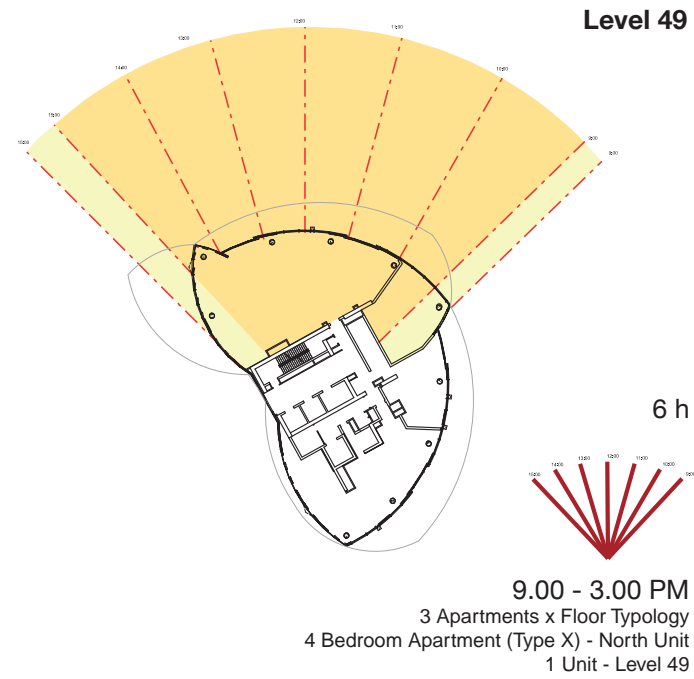
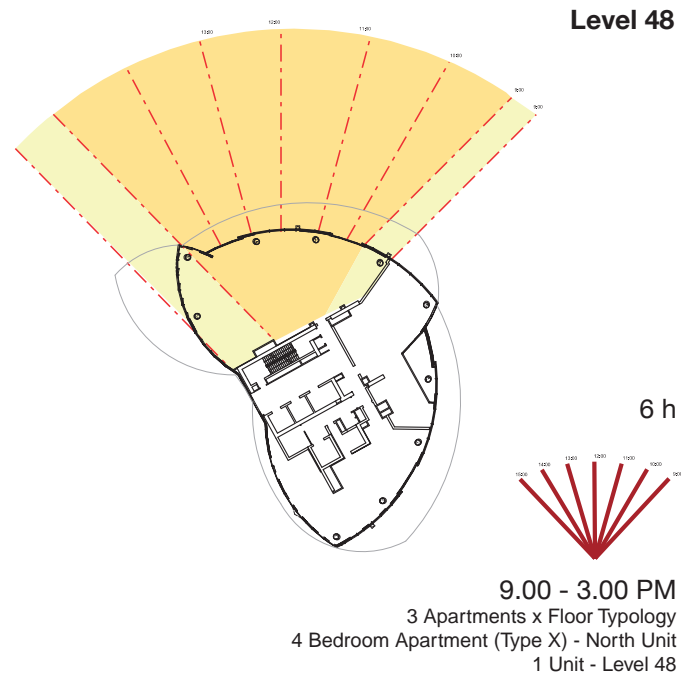
4 Apartments / Floor
Levels 33-37

15 units with 3 hours direct sunlight: 17.2%

3 Apartments / Floor
Levels 38-47

10 units with 5 hours direct sunlight: 11.5%
10 units with 3 hours direct sunlight: 11.5%





3 Apartments / Floor
Level 48

1 unit with 6 hours direct sunlight: 1.1%
1 unit with 3 hours direct sunlight: 1.1%

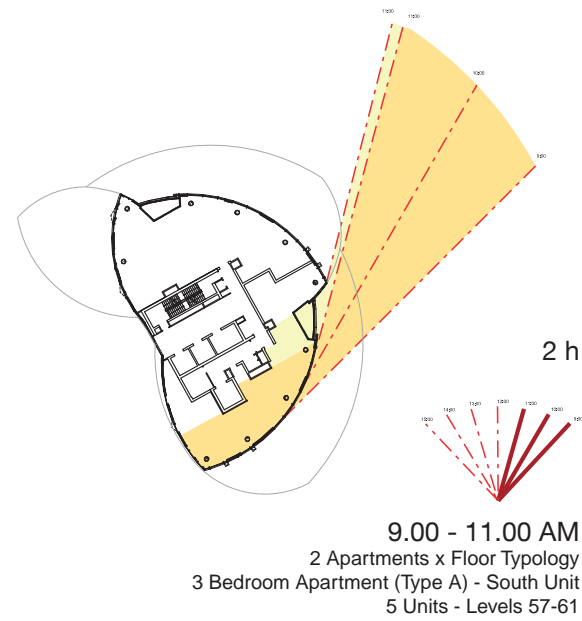
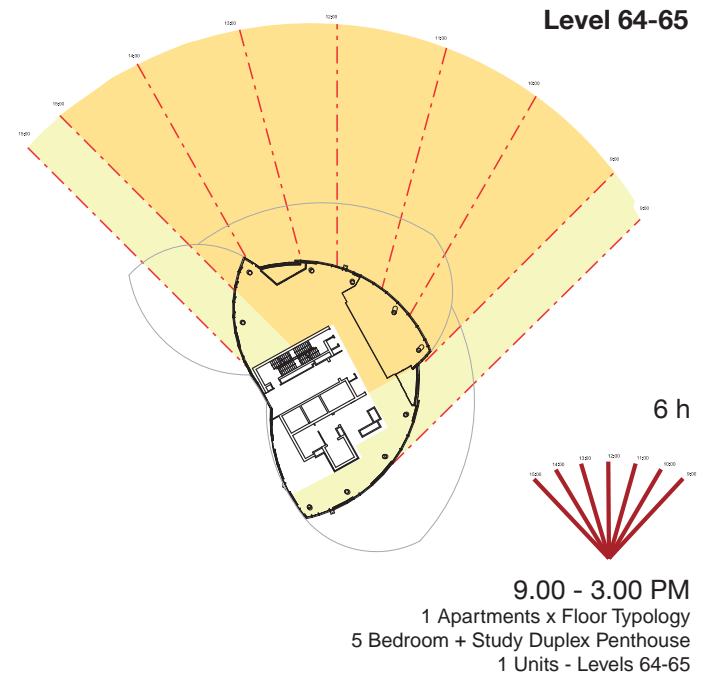
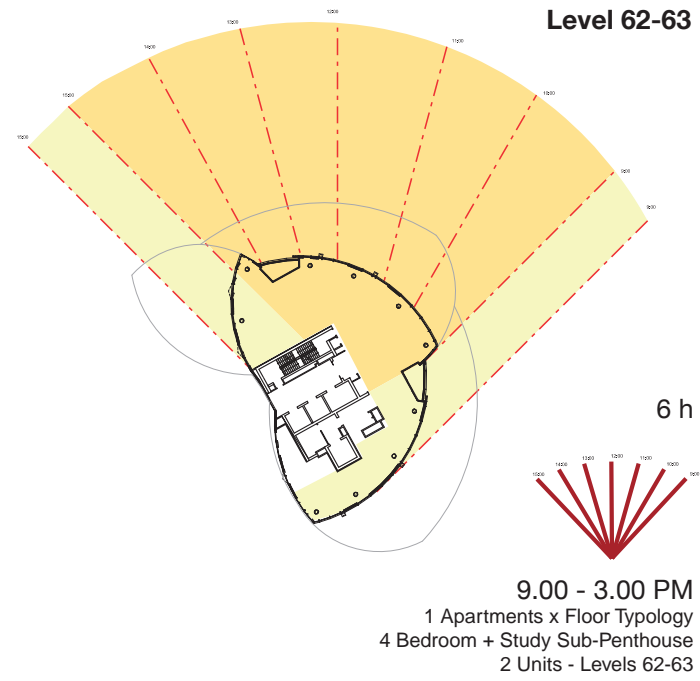
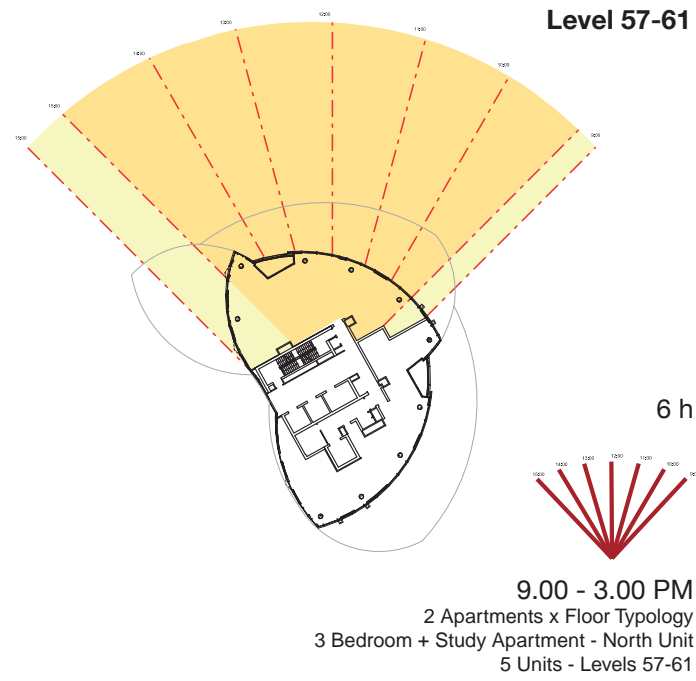
3 Apartments / Floor
Levels 49

1 units with 6 hours direct sunlight: 1.1%
1 units with 2 hours direct sunlight: 1.1%

3 Apartments / Floor
Levels 51-56

6 units with 5 hours direct sunlight: 6.9%
6 units with 6 hours direct sunlight: 6.9%





2 Apartments / Floor
Levels 57-61

5 units with 6 hours direct sunlight: 5.7%
5 units with 2 hours direct sunlight: 5.7%

1 Apartment / Floor
Levels 62-63

2 units with 6 hours direct sunlight: 2.3%

1 Apartment / Floor
Levels 64-65

1 units with 6 hours direct sunlight: 1.1%

Summary

Minimum of 2 hours of direct sunlight
between 9AM and 3PM:

64 units (out of 87 total)

= 73.56%

Apartment Group	Unit Type	Total Apartments	Total Beds
Level 33 - 37 (5 Floors)	3 Bedroom	20	50
	3 Bedroom		
	2 Bedroom + Study		
	2 Bedroom + Study		
Level 38-47 (10 Floors)	4 Bedroom	30	90
	3 Bedroom		
	2 Bedroom + Study		
Level 48 (1 Floor)	4 Bedroom	3	10
	3 Bedroom		
	3 Bedroom		
level 49 (1 Floor)	4 Bedroom	3	9
	3 Bedroom		
	2 Bedroom		
level 51-56 (6 Floors)	3 Bedroom + Study	18	48
	3 Bedroom		
	2 Bedroom		
Level 57-61 (5 Floors)	3 Bedroom + Study	10	30
	3 Bedroom		
Level 62-63	4 Bedroom + Study	2	8
Level 64-65	5 Bedroom + Study	1	5
		87	250

8.3.1 APARTMENT SCHEDULE SUMMARY & TOTAL BEDROOMS

The residential component of the tower can be organised between eight sub-groups, each with a consistent floor plan. The adjacent table summarises these apartment groups and accounts for the total number of apartments and bedrooms within the tower.