

22 April 2021

610.18313-L12-v1.0 Environmental Winds Clarification 20210422.docx

AJ+C Architects
79 Myrtle Street
CIPPENDALE NSW 2008

Attention: Mr Ryan Peeters

Dear Ryan

90-102 Regent Street Development Environmental Winds

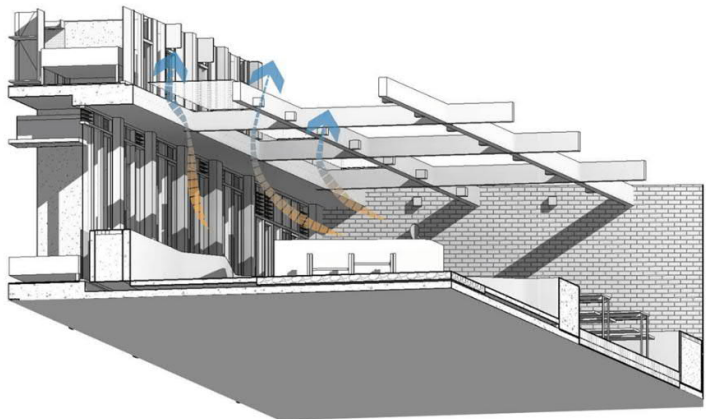
SLR Consulting Australia Pty Ltd (SLR) had undertaken a series of Wind Tunnel Environmental Studies for your proposed development at 90-102 Regent Street, Redfern. The most recent report was:

- SLR Report 610.18313-R12-v3.0,
"90-102 Regent Street, Redfern – Environmental Wind Tunnel Test",
September 2020.

One of the recommendations stemming from our wind study was to add a louvred awning to assist in mitigating potentially adverse wind conditions on the northern terrace, as well as awnings for the eastern and western terraces. It has since been noted that these awnings might have the potential to trap heat below, thereby impacting the amenity of the space from a comfort point of view.

A practical solution to this amenity issue is to separate each of the awnings from the adjoining walls with a small gap that would allow hotter air trapped below to circulate upwards and away from the building. The latest design awning design – see adjacent figure – achieves this solution.

We can confirm that the above awning design changes will have no impact on the results of our previous wind tunnel studies. Please do not hesitate to call (0421 915 597) if you have any further queries related to this project.



Yours sincerely



DR PETER GEORGIU
Technical Director - Wind Engineering

Checked/Authorised by: NAK