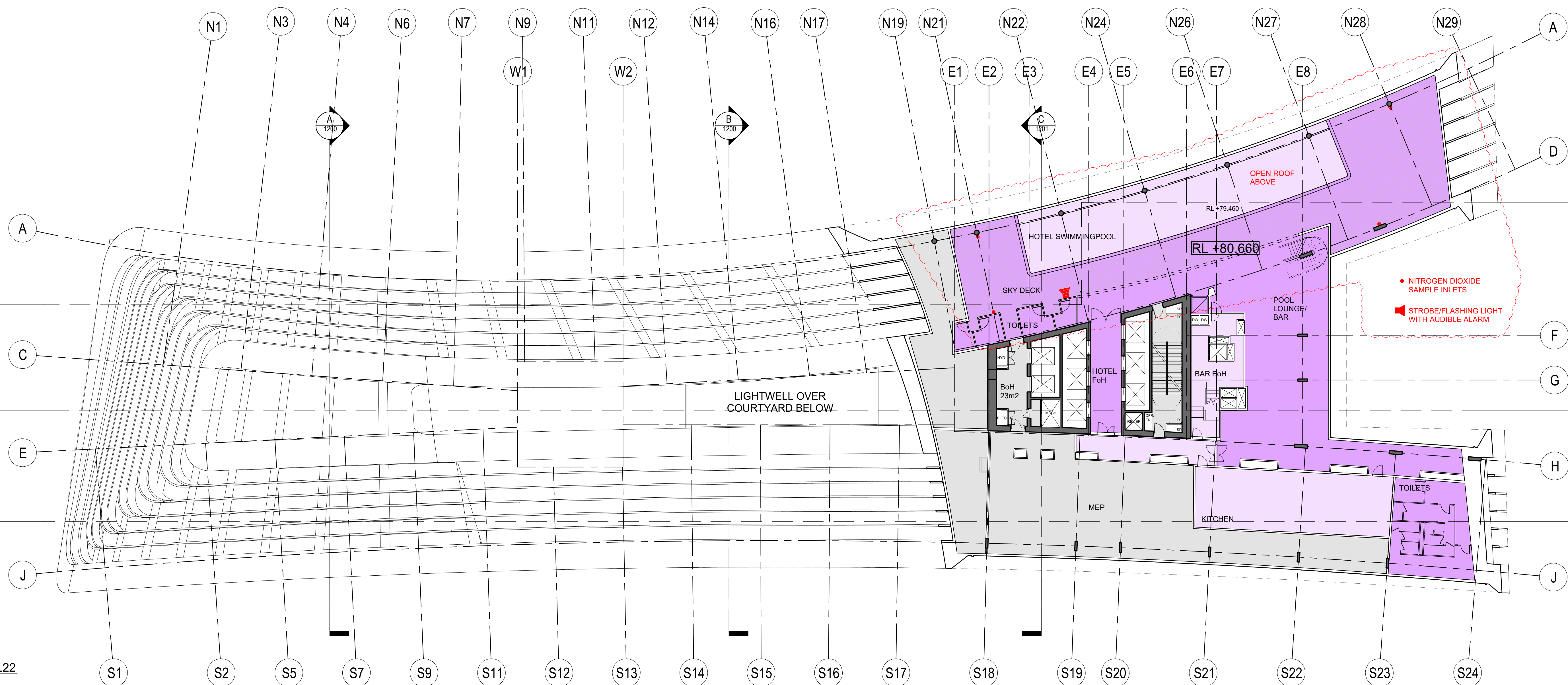
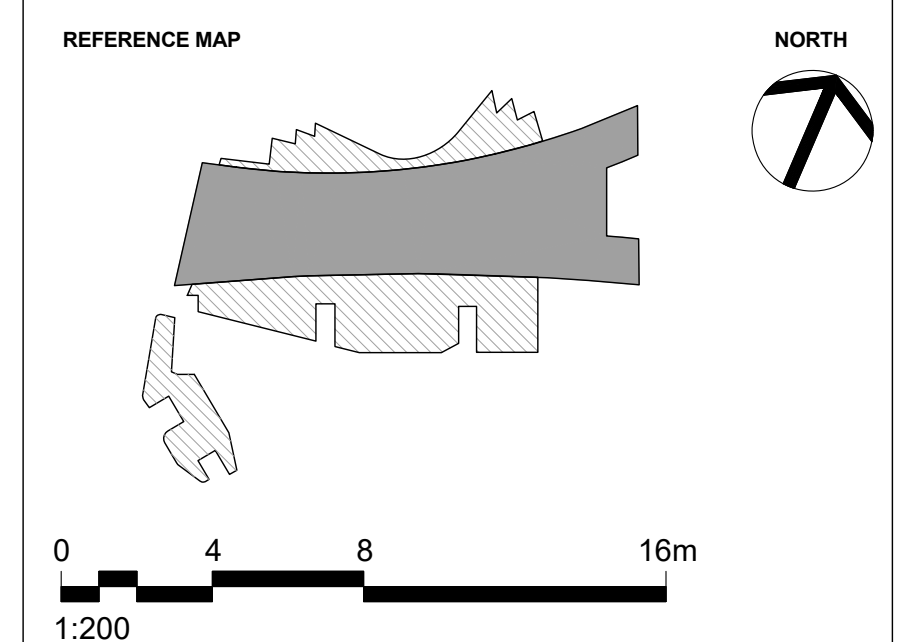


**1** HOTEL/SERVICED APARTMENTS L21  
1:200



**2** HOTEL/SERVICED APARTMENTS L22  
1:200



**NOTES**

- DO NOT SCALE DRAWINGS. WRITTEN DIMENSIONS GOVERN.
- ALL DIMENSIONS ARE IN MILLIMETRES UNLESS NOTED OTHERWISE.
- ALL DIMENSIONS SHALL BE VERIFIED ON SITE BEFORE PROCEEDING WITH THE WORK. HASSELL SHALL BE NOTIFIED IN WRITING OF ANY DISCREPANCIES.
- THIS DRAWING MUST BE READ IN CONJUNCTION WITH ALL RELEVANT CONTRACTS, SPECIFICATIONS AND DRAWINGS.

© COPYRIGHT OF THIS DRAWING IS VESTED IN HASSELL LTD.  
2017 HASSELL LTD.

THIS DRAWING IS AN UNCONTROLLED COPY, UNLESS NOTED OTHERWISE.

REV	DESCRIPTION	DATE
H	DA MODIFICATION 7 (OPEN ROOF POOL)	27.03.2019
G	DA MODIFICATION 7 (OPEN ROOF POOL)	23.11.2018
F1	INTERIOR FITOUT AMENDMENTS CLOUDED DA MOD 6 (TOWER)	12.06.18
F	AMENDED INTERIOR FITOUT DA MODIFICATION 6 (TOWER)	26.03.18
E	DA MODIFICATION 6 (TOWER)	23.10.17
D1	AMENDED REVISION DESCRIPTION DA MODIFICATION 5 (ROOM MIX)	23.10.17
D	DA MODIFICATION 4 (ROOM MIX)	15.05.17
C	AMENDED DEVELOPMENT APPLICATION	28.03.17
B	AMENDED DEVELOPMENT APPLICATION	14.12.16
A	AMENDED DEVELOPMENT APPLICATION	15.12.15
-	AMENDED DEVELOPMENT APPLICATION	23.10.15

**ARCHITECT**  
HASSELL Limited ABN 007 711 435  
LEVEL 2, PIER 8/9,  
23 HICKSON ROAD,  
SYDNEY NSW 2000 AUSTRALIA  
SYDNEY@HASSELLSTUDIO.COM  
T +61 2 9101 2000 F +61 2 9101 2100

**HASSELL**

**pmdl**  
CLIENT

**Grocon**

PROJECT  
THE RIBBON HOTEL,  
SERVICED APARTMENTS AND RETAIL  
31 WHEAT ROAD, SYDNEY

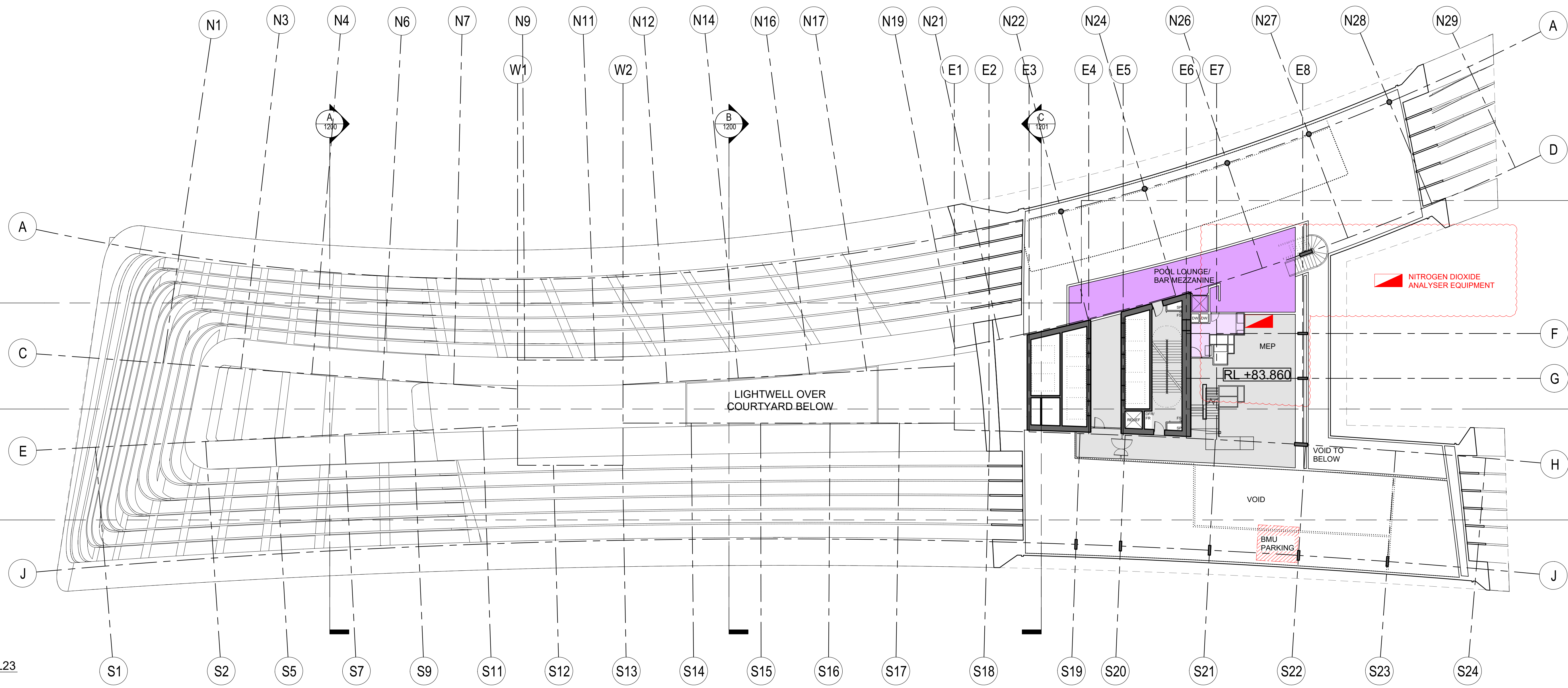
DRAWING TITLE  
GA PLANS - HOTEL L21 AND L22

STATUS  
**FOR APPROVAL**

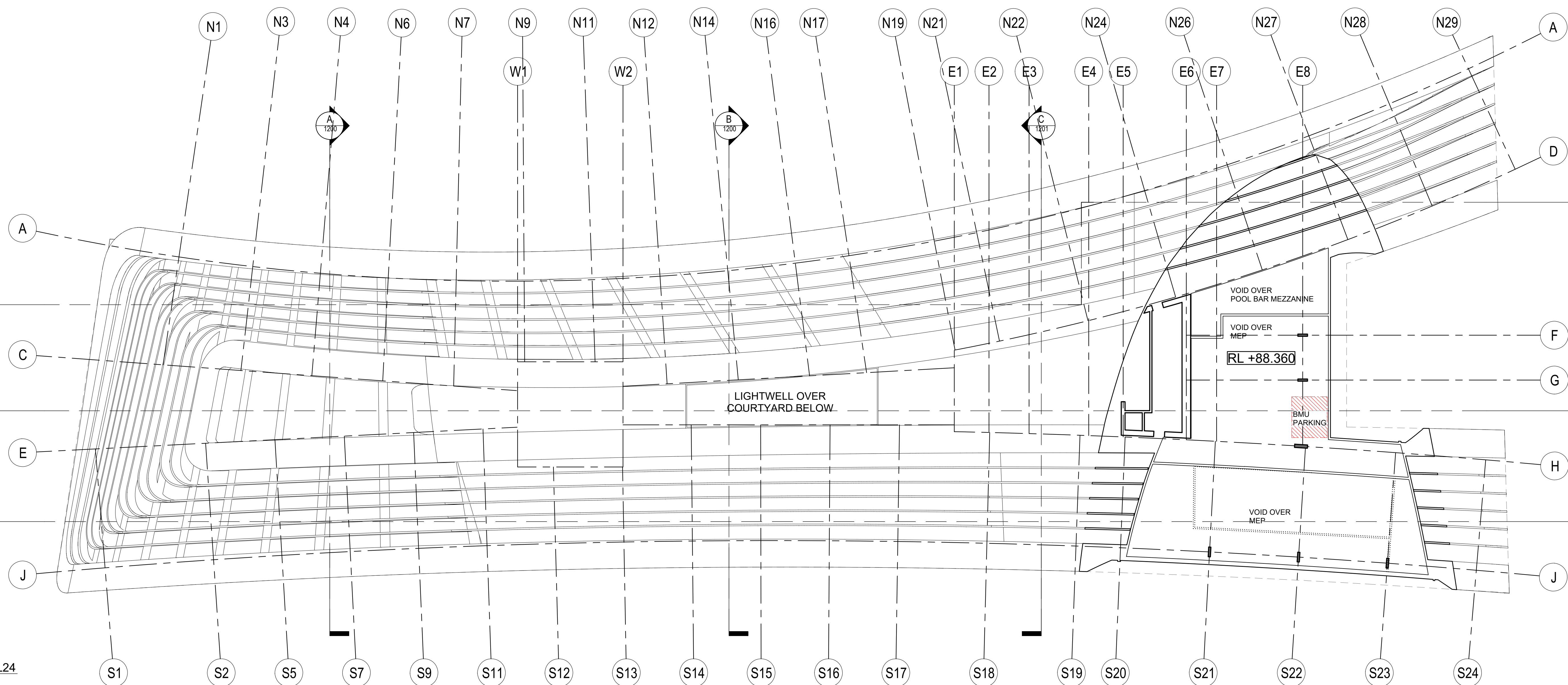
SCALE @ B1	DRAWN	CO-ORD	REVIEWED	APPROVED
1:200	RT	MH	MH	EL

PROJECT NUMBER	DRAWING NUMBER	REV
A004409	ARC-HSL-DD-1112.1	H

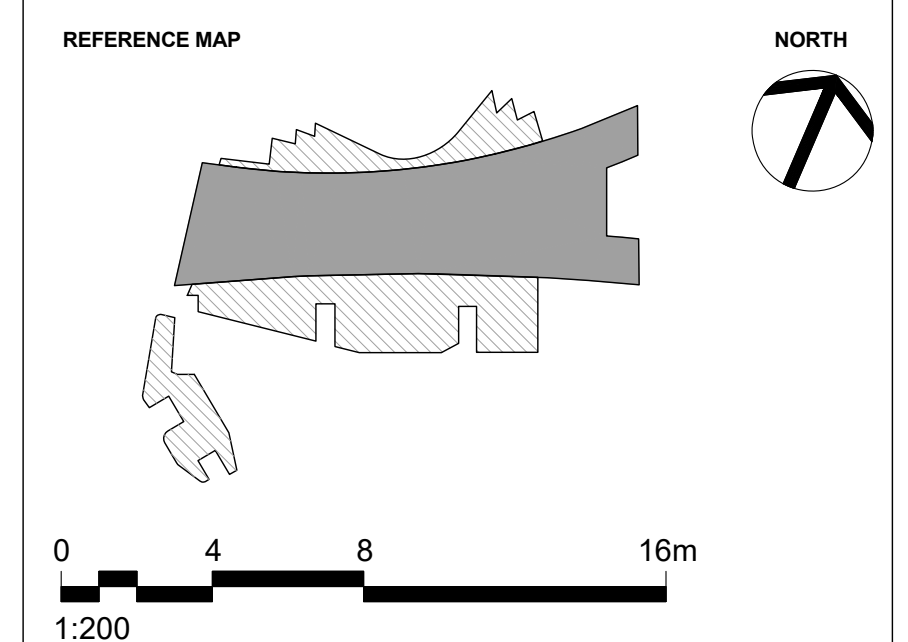
\\pdr\pdr\1004409\Drawings\GA\Hotel DA\_SectionRt\_Jan\_2017\SectionRt\_Mat\_7\Revised.mxd - 004409\_TheRibbon\_HotelDA\_S06\_01\_B0810\_1105\_Phdns-Antoine\14510\_3dm  
3/27/2018 4:44:08 PM  
Original Sheet Size B1-1000 x 707mm



**1** HOTEL/SERVICED APARTMENTS L23  
1:200



**2** HOTEL/SERVICED APARTMENTS L24  
1:200



**NOTES**

- DO NOT SCALE DRAWINGS. WRITTEN DIMENSIONS GOVERN.
- ALL DIMENSIONS ARE IN MILLIMETRES UNLESS NOTED OTHERWISE.
- ALL DIMENSIONS SHALL BE VERIFIED ON SITE BEFORE PROCEEDING WITH THE WORK. HASSELL SHALL BE NOTIFIED IN WRITING OF ANY DISCREPANCIES.
- THIS DRAWING MUST BE READ IN CONJUNCTION WITH ALL RELEVANT CONTRACTS, SPECIFICATIONS AND DRAWINGS.

© COPYRIGHT OF THIS DRAWING IS VESTED IN HASSELL LTD.  
2017 HASSELL LTD.

THIS DRAWING IS AN UNCONTROLLED COPY, UNLESS NOTED OTHERWISE.

REV	DESCRIPTION	DATE
I	DA MODIFICATION 7 (OPEN ROOF POOL)	27.03.2019
H	DA MODIFICATION 7 (OPEN ROOF POOL)	23.11.2018
G	AMENDED HOTEL POOL ROOF DA MOD 6 (TOWER)	10.08.18
F1	INTERIOR FITOUT AMENDMENTS CLOUDED DA MOD 6 (TOWER)	12.06.18
F	AMENDED INTERIOR FITOUT DA MODIFICATION 6 (TOWER)	26.03.18
E	DA MODIFICATION 6 (TOWER)	23.10.17
D1	AMENDED REVISION DESCRIPTION DA MODIFICATION 5 (ROOM MIX)	23.10.17
D	DA MODIFICATION 4 (ROOM MIX)	15.05.17
C	AMENDED DEVELOPMENT APPLICATION	28.03.17
B	AMENDED DEVELOPMENT APPLICATION	14.12.16
A	AMENDED DEVELOPMENT APPLICATION	14.12.16
-	AMENDED DEVELOPMENT APPLICATION	15.12.15

**ARCHITECT**  
HASSELL Limited ABN 007 711 435  
LEVEL 2, PIER 8/9,  
23 HICKSON ROAD  
SYDNEY NSW 2000 AUSTRALIA  
SYDNEY@HASSELLSTUDIO.COM  
T +61 2 9101 2000 F +61 2 9101 2100

**HASSELL**

**pmcl**  
CLIENT  
**Grocon**

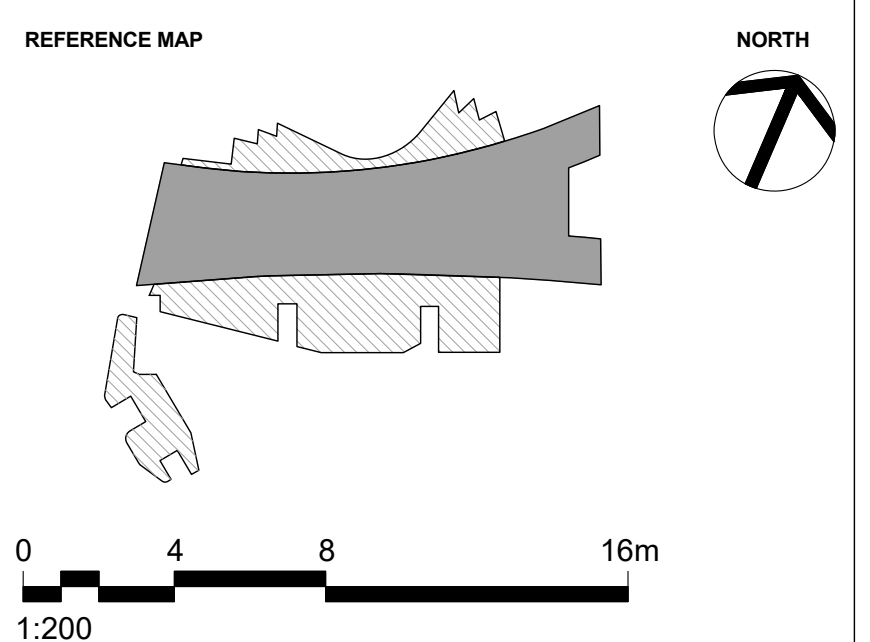
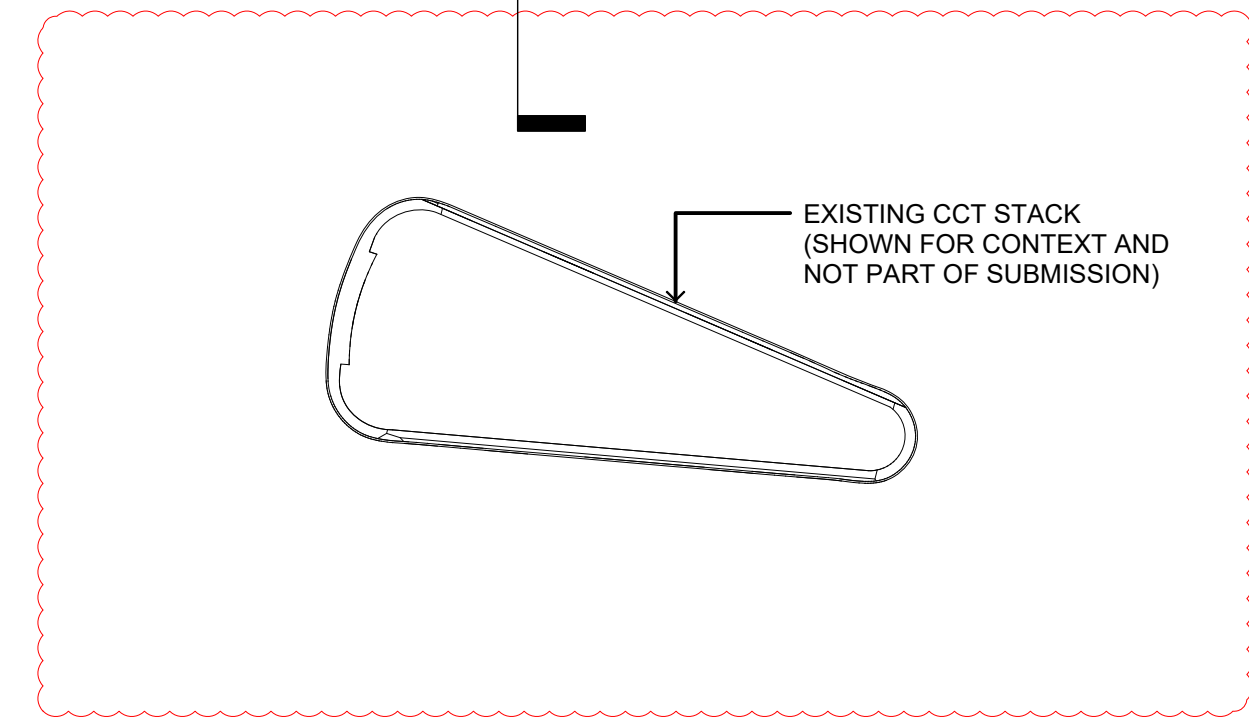
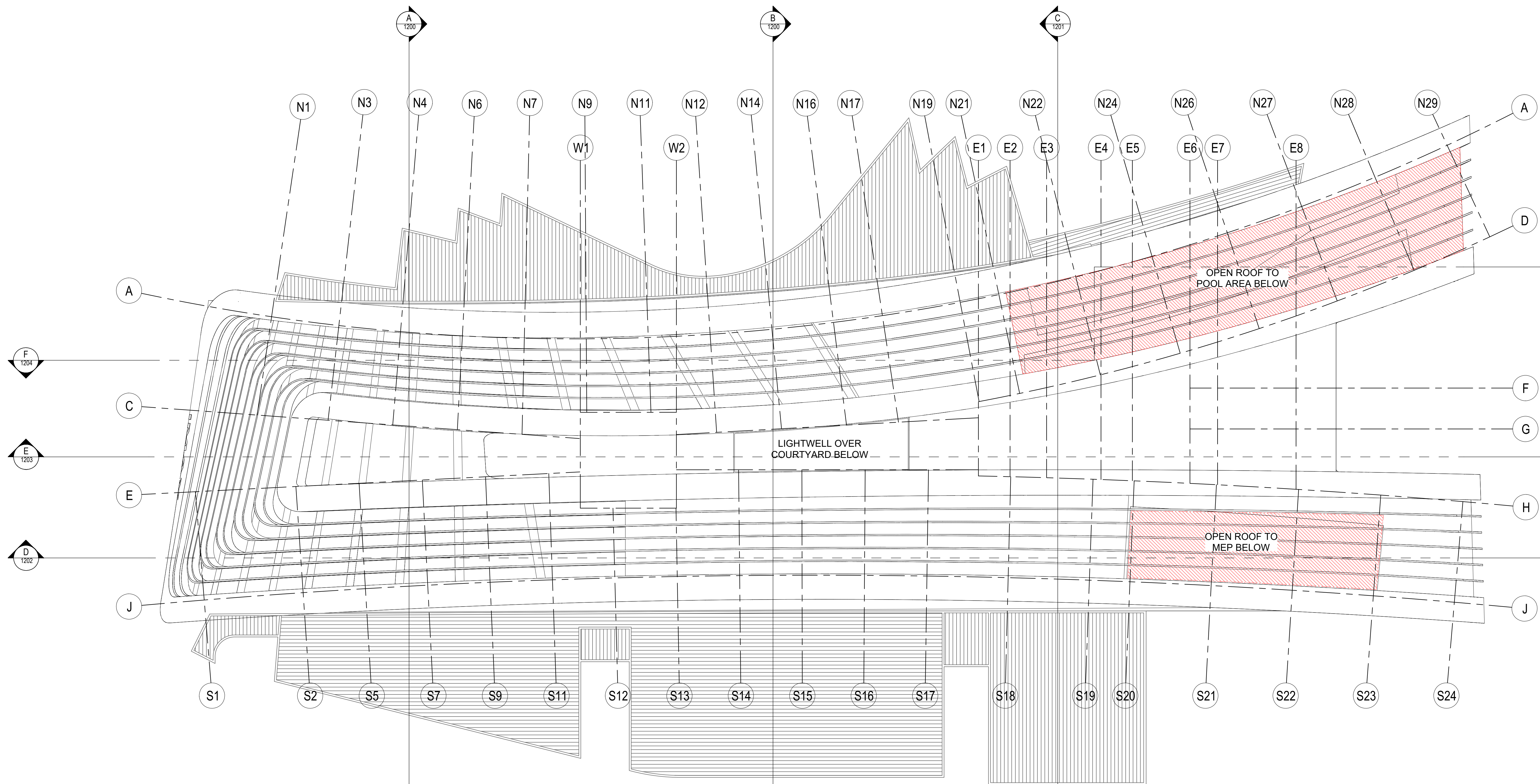
PROJECT  
THE RIBBON HOTEL,  
SERVICED APARTMENTS AND RETAIL  
31 WHEAT ROAD, SYDNEY

DRAWING TITLE  
GA PLANS - HOTEL L23 AND L24

STATUS  
FOR APPROVAL

SCALE @ B1	DRAWN	CO-ORD	REVIEWED	APPROVED
1:200	RT	MH	MH	EL
PROJECT NUMBER	DRAWING NUMBER	REV		
A004409	ARC-HSL-DD-1112.2	I		

\\ppl\ppl1004409\Drawings\GA\Hotel DA\_SectionRt\_Jan\_2017\SectionRt\_Mat 7\Revised.mxd - 004409\_TheRibbon\_HotelDA\_S06.dwg - 16/08/10\_1105\_rhns-Avalon\14510\_3dm 3/27/2018 4:44:08 PM



**NOTES**

- DO NOT SCALE DRAWINGS. WRITTEN DIMENSIONS GOVERN.
- ALL DIMENSIONS ARE IN MILLIMETRES UNLESS NOTED OTHERWISE.
- ALL DIMENSIONS SHALL BE VERIFIED ON SITE BEFORE PROCEEDING WITH THE WORK. HASSELL SHALL BE NOTIFIED IN WRITING OF ANY DISCREPANCIES.
- THIS DRAWING MUST BE READ IN CONJUNCTION WITH ALL RELEVANT CONTRACTS, SPECIFICATIONS AND DRAWINGS.

© COPYRIGHT OF THIS DRAWING IS VESTED IN HASSELL LTD.  
2017 HASSELL LTD.

THIS DRAWING IS AN UNCONTROLLED COPY, UNLESS NOTED OTHERWISE.

REV	DESCRIPTION	DATE
N	DA MODIFICATION 7 (OPEN ROOF POOL)	27.03.2019
M	DA MODIFICATION 7 (OPEN ROOF POOL)	23.11.2018
L	AMENDED HOTEL POOL ROOF DA MOD 6 (TOWER)	10.08.18
K	INTERIOR FITOUT AMENDMENTS CLOUDED DA MOD 6 (TOWER)	12.06.18
J	DA MODIFICATION 6 (TOWER)	23.10.17
HI	DELETE HATCH AND ADDITION OF PODIUM CANOPY DA MOD 3 (PODIUM)	19.10.17
H	DA MODIFICATION 3 (PODIUM)	21.04.17
G	AMENDED DEVELOPMENT APPLICATION	12.04.17
F	AMENDED DEVELOPMENT APPLICATION	28.03.17
E	AMENDED DEVELOPMENT APPLICATION	21.03.16
D	AMENDED DEVELOPMENT APPLICATION	15.12.15
C	AMENDED DEVELOPMENT APPLICATION	23.10.15
B	DEVELOPMENT APPLICATION	20.08.13
A	FINAL DRAFT	23.07.13
-	ISSUED FOR INFORMATION	19.07.13

REV	DESCRIPTION	DATE
N	DA MODIFICATION 7 (OPEN ROOF POOL)	27.03.2019
M	DA MODIFICATION 7 (OPEN ROOF POOL)	23.11.2018
L	AMENDED HOTEL POOL ROOF DA MOD 6 (TOWER)	10.08.18
K	INTERIOR FITOUT AMENDMENTS CLOUDED DA MOD 6 (TOWER)	12.06.18
J	DA MODIFICATION 6 (TOWER)	23.10.17
HI	DELETE HATCH AND ADDITION OF PODIUM CANOPY DA MOD 3 (PODIUM)	19.10.17
H	DA MODIFICATION 3 (PODIUM)	21.04.17
G	AMENDED DEVELOPMENT APPLICATION	12.04.17
F	AMENDED DEVELOPMENT APPLICATION	28.03.17
E	AMENDED DEVELOPMENT APPLICATION	21.03.16
D	AMENDED DEVELOPMENT APPLICATION	15.12.15
C	AMENDED DEVELOPMENT APPLICATION	23.10.15
B	DEVELOPMENT APPLICATION	20.08.13
A	FINAL DRAFT	23.07.13
-	ISSUED FOR INFORMATION	19.07.13

**ARCHITECT**  
HASSELL Limited ABN 007 711 435  
LEVEL 2, PIER 6B,  
23 HICKSON ROAD  
SYDNEY NSW 2000 AUSTRALIA  
SYDNEY@HASSELLSTUDIO.COM  
T +61 2 9101 2000 F +61 2 9101 2100

**HASSELL**

**pmi**

**Grocon**

**PROJECT**  
THE RIBBON HOTEL,  
SERVICED APARTMENTS AND RETAIL  
31 WHEAT ROAD, SYDNEY

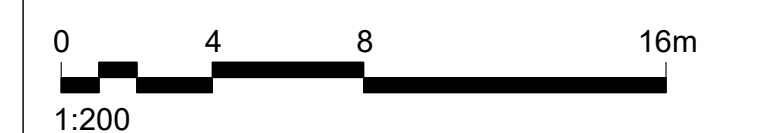
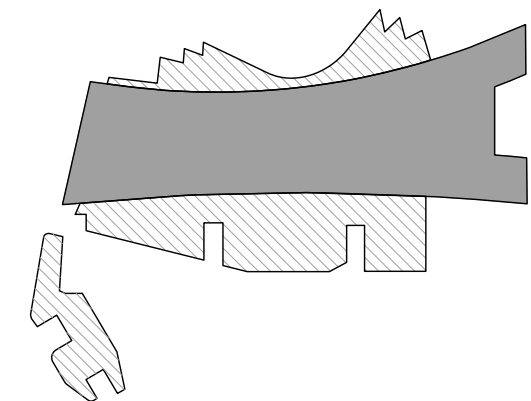
**DRAWING TITLE**  
GA PLANS - ROOF

**STATUS**  
FOR APPROVAL

SCALE @ B1	DRAWN	CO-ORD	REVIEWED	APPROVED
1:200	RT	MH	MH	EL
PROJECT NUMBER	DRAWING NUMBER	REV		
A004409	ARC-HSL-DD-1113	N		

\\pdr\pdr1004409\Drawings\GA\Hotel DA\_SectionR6\_Jan\_2017\SectionR6\_Model7\Revised.mxd - 004409\_TheRibbon\_HotelDA\_S06.dwg - 16/08/10\_1106\_Finish-AutoSave1 145 (1).3dm 3/27/2019 4:44:06 PM

REFERENCE MAP



- NOTES**
- DO NOT SCALE DRAWINGS. WRITTEN DIMENSIONS GOVERN.
  - ALL DIMENSIONS ARE IN MILLIMETRES UNLESS NOTED OTHERWISE.
  - ALL DIMENSIONS SHALL BE VERIFIED ON SITE BEFORE PROCEEDING WITH THE WORK. HASSELL SHALL BE NOTIFIED IN WRITING OF ANY DISCREPANCIES.
  - THIS DRAWING MUST BE READ IN CONJUNCTION WITH ALL RELEVANT CONTRACTS, SPECIFICATIONS AND DRAWINGS.

© COPYRIGHT OF THIS DRAWING IS VESTED IN HASSELL, LTD.  
2017 HASSELL, LTD.

THIS DRAWING IS AN UNCONTROLLED COPY, UNLESS NOTED OTHERWISE.

REV	DESCRIPTION	DATE
L	DA MODIFICATION 7 (OPEN ROOF POOL)	27.03.2019
K	DA MODIFICATION 7 (OPEN ROOF POOL)	23.11.2018
J1	TOWER ENVELOPE CLOUDED DA MODIFICATION 6 (TOWER)	12.06.18
J	DA MODIFICATION 6 (TOWER)	23.10.17
H1	DELETE HATCH DA MODIFICATION 3 (PODIUM)	19.10.17
H	DA MODIFICATION 3 (PODIUM)	21.04.17
G	AMENDED DEVELOPMENT APPLICATION	12.04.17
F	AMENDED DEVELOPMENT APPLICATION	24.02.17
E	AMENDED DEVELOPMENT APPLICATION	21.03.16
D	AMENDED DEVELOPMENT APPLICATION	15.12.15
C	AMENDED DEVELOPMENT APPLICATION	23.10.15
B	DEVELOPMENT APPLICATION	20.08.13
A	FINAL DRAFT	23.07.13
-	ISSUED FOR INFORMATION	19.07.13

REV	DESCRIPTION	DATE
L	DA MODIFICATION 7 (OPEN ROOF POOL)	27.03.2019
K	DA MODIFICATION 7 (OPEN ROOF POOL)	23.11.2018
J1	TOWER ENVELOPE CLOUDED DA MODIFICATION 6 (TOWER)	12.06.18
J	DA MODIFICATION 6 (TOWER)	23.10.17
H1	DELETE HATCH DA MODIFICATION 3 (PODIUM)	19.10.17
H	DA MODIFICATION 3 (PODIUM)	21.04.17
G	AMENDED DEVELOPMENT APPLICATION	12.04.17
F	AMENDED DEVELOPMENT APPLICATION	24.02.17
E	AMENDED DEVELOPMENT APPLICATION	21.03.16
D	AMENDED DEVELOPMENT APPLICATION	15.12.15
C	AMENDED DEVELOPMENT APPLICATION	23.10.15
B	DEVELOPMENT APPLICATION	20.08.13
A	FINAL DRAFT	23.07.13
-	ISSUED FOR INFORMATION	19.07.13

**ARCHITECT**  
HASSELL Limited ABN 007 711 435  
LEVEL 2, PIER 6/9,  
23 HICKSON ROAD  
SYDNEY NSW 2000 AUSTRALIA  
SYDNEY@HASSELLSTUDIO.COM  
T +61 2 9101 2000 F +61 2 9101 2100

**HASSELL**

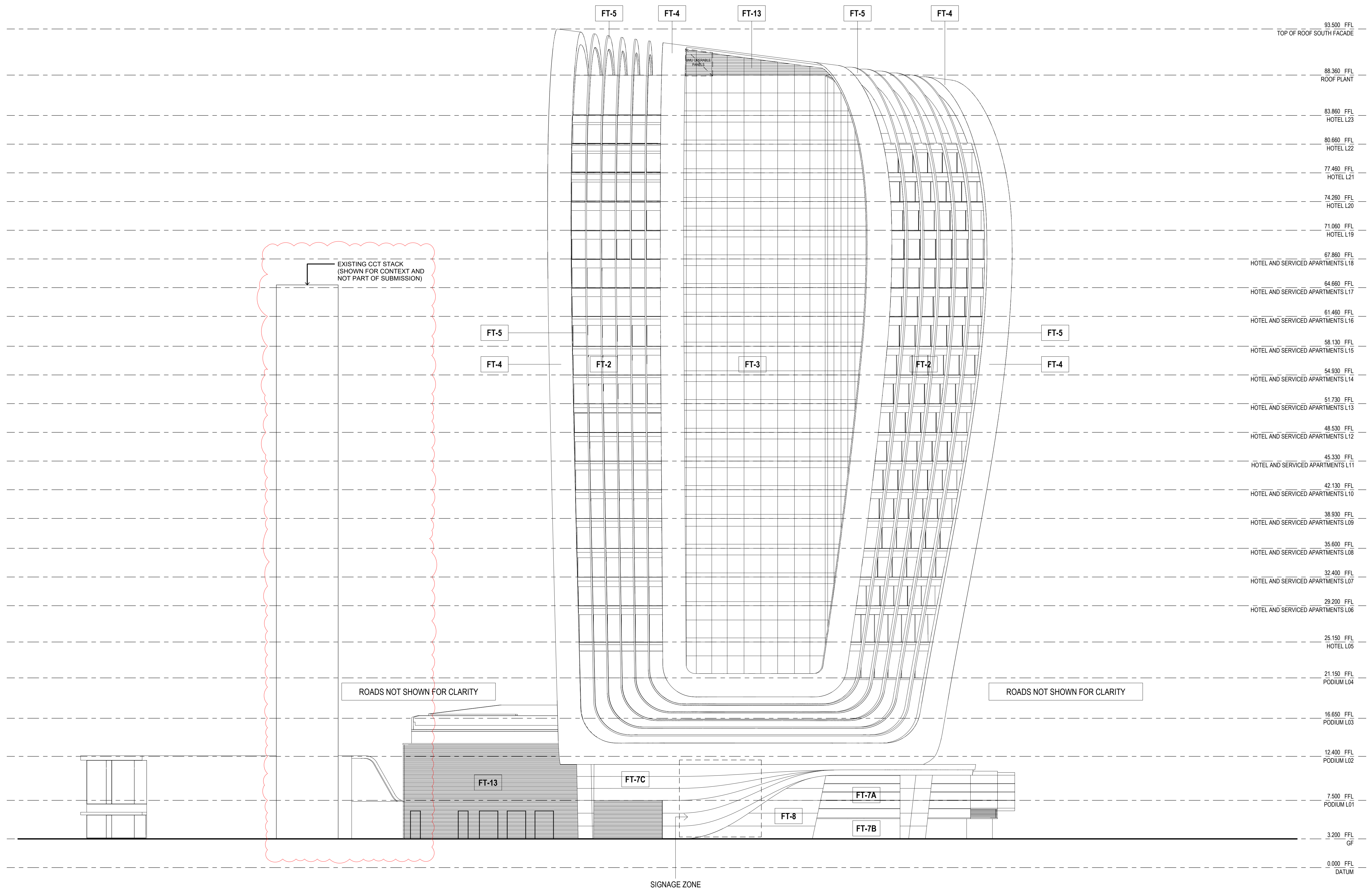


PROJECT  
**THE RIBBON HOTEL,  
SERVICED APARTMENTS AND RETAIL**  
31 WHEAT ROAD, SYDNEY

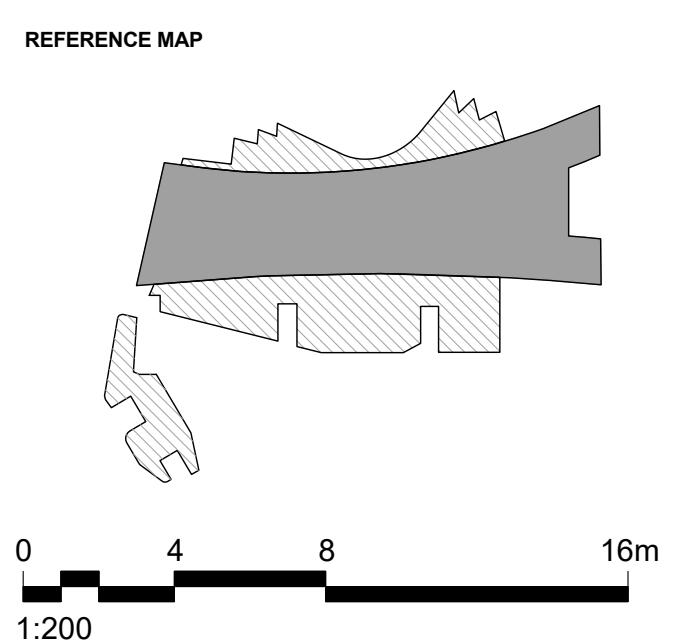
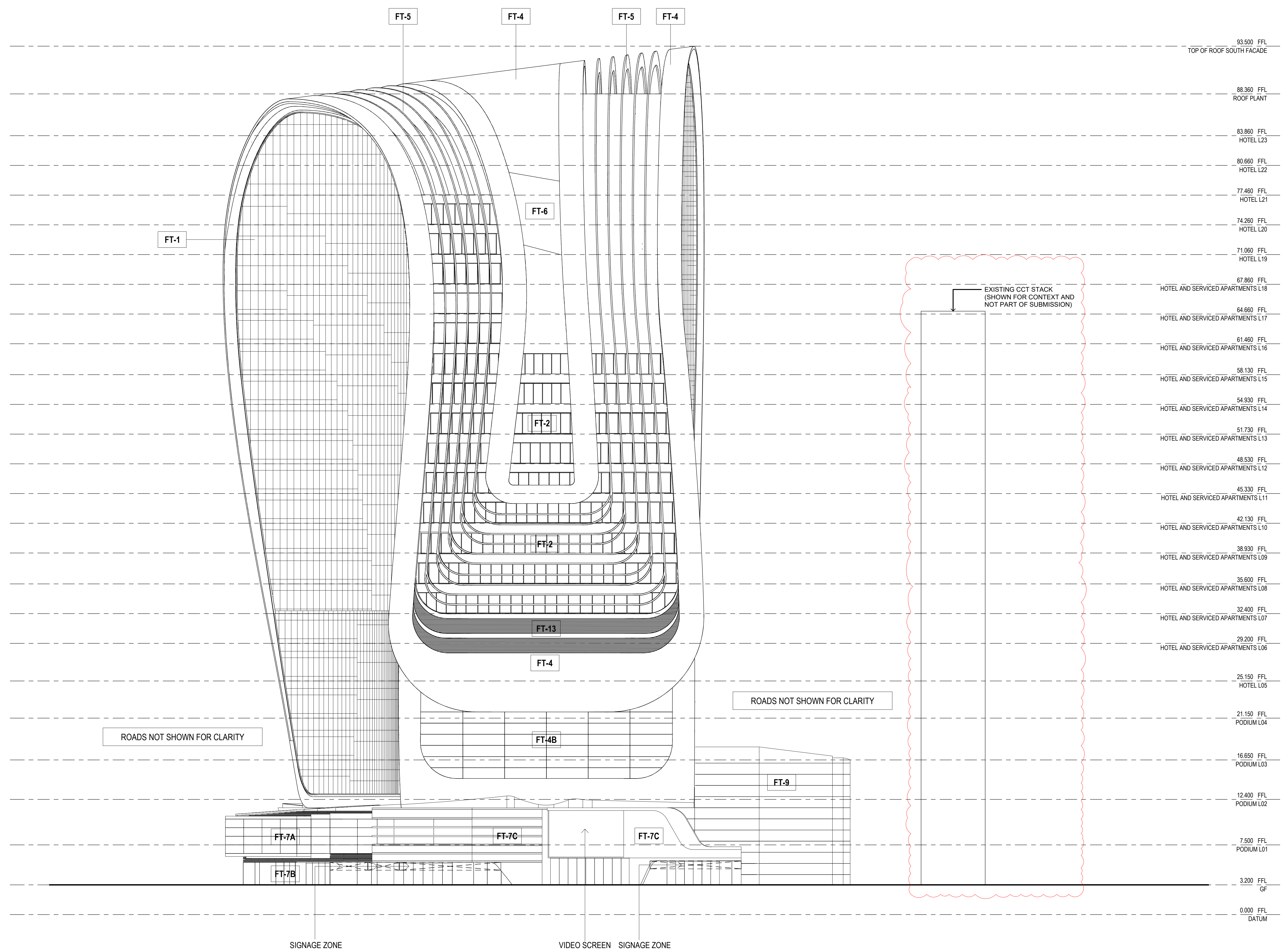
DRAWING TITLE  
**GA ELEVATIONS - SHEET 2**

STATUS  
**FOR APPROVAL**

SCALE @ B1	DRAWN	CO-ORD	REVIEWED	APPROVED
1:200	RT	MH	MH	EL
PROJECT NUMBER	DRAWING NUMBER	REV		
A004409	ARC-HSL-DD-1151	L		



EAST ELEVATION  
1:200



- NOTES**
- DO NOT SCALE DRAWINGS. WRITTEN DIMENSIONS GOVERN.
  - ALL DIMENSIONS ARE IN MILLIMETRES UNLESS NOTED OTHERWISE.
  - ALL DIMENSIONS SHALL BE VERIFIED ON SITE BEFORE PROCEEDING WITH THE WORK. HASSELL SHALL BE NOTIFIED IN WRITING OF ANY DISCREPANCIES.
  - THIS DRAWING MUST BE READ IN CONJUNCTION WITH ALL RELEVANT CONTRACTS, SPECIFICATIONS AND DRAWINGS.

© COPYRIGHT OF THIS DRAWING IS VESTED IN HASSELL, LTD.  
2017 HASSELL, LTD.  
THIS DRAWING IS AN UNCONTROLLED COPY, UNLESS NOTED OTHERWISE.

REV	DESCRIPTION	DATE
N	DA MODIFICATION 7 (OPEN ROOF POOL)	27.03.2019
M	DA MODIFICATION 7 (OPEN ROOF POOL)	23.11.2018
L	TOWER ENVELOPE CLOUDED DA MODIFICATION 6 (TOWER)	12.06.18
K	ADDITION WESTERN COLUMN CLADDING DA MODIFICATION 6 (TOWER)	26.03.18
J	DA MODIFICATION 6 (TOWER)	23.10.17
HT	DELETE HATCH DA MODIFICATION 3 (PODIUM)	19.10.17
H	DA MODIFICATION 3 (PODIUM)	21.04.17
G	AMENDED DEVELOPMENT APPLICATION	12.04.17
F	AMENDED DEVELOPMENT APPLICATION	24.02.17
E	AMENDED DEVELOPMENT APPLICATION	22.03.16
D	AMENDED DEVELOPMENT APPLICATION	15.12.15
C	AMENDED DEVELOPMENT APPLICATION	23.10.15
B	DEVELOPMENT APPLICATION	20.08.13
A	FINAL DRAFT	23.07.13
-	ISSUED FOR INFORMATION	19.07.13

**ARCHITECT**  
HASSELL Limited ABN 007 711 435  
LEVEL 2, PIER 6/9,  
23 HICKSON ROAD  
SYDNEY NSW 2000 AUSTRALIA  
SYDNEY@HASSELLSTUDIO.COM  
T +61 2 9101 2000 F +61 2 9101 2100  
**HASSELL**

**pmdl**  
CLIENT  
**Grocon**  
PROJECT  
THE RIBBON HOTEL,  
SERVICED APARTMENTS AND RETAIL  
31 WHEAT ROAD, SYDNEY

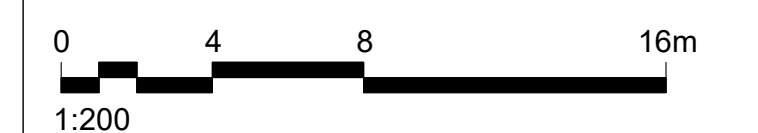
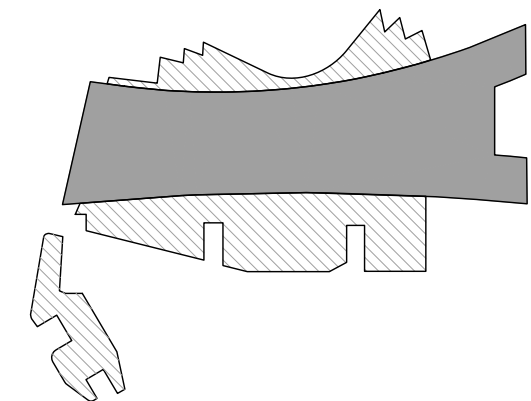
DRAWING TITLE  
GA ELEVATIONS - SHEET 3

STATUS  
FOR APPROVAL

SCALE @ B1	DRAWN	CO-ORD	REVIEWED	APPROVED
1:200	RT	MH	MH	EL
PROJECT NUMBER	DRAWING NUMBER	REV		
A004409	ARC-HSL-DD-1152	N		

WEST ELEVATION  
1:200

REFERENCE MAP



- NOTES**
- DO NOT SCALE DRAWINGS. WRITTEN DIMENSIONS GOVERN.
  - ALL DIMENSIONS ARE IN MILLIMETRES UNLESS NOTED OTHERWISE.
  - ALL DIMENSIONS SHALL BE VERIFIED ON SITE BEFORE PROCEEDING WITH THE WORK. HASSELL SHALL BE NOTIFIED IN WRITING OF ANY DISCREPANCIES.
  - THIS DRAWING MUST BE READ IN CONJUNCTION WITH ALL RELEVANT CONTRACTS, SPECIFICATIONS AND DRAWINGS.

© COPYRIGHT OF THIS DRAWING IS VESTED IN HASSELL, LTD.  
2017 HASSELL, LTD.

THIS DRAWING IS AN UNCONTROLLED COPY, UNLESS NOTED OTHERWISE.

REV	DESCRIPTION	DATE
N	DA MODIFICATION 7 (OPEN ROOF POOL)	27.03.2019
M	DA MODIFICATION 7 (OPEN ROOF POOL)	23.11.2018
L	TOWER ENVELOPE CLOUDED DA MODIFICATION 6 (TOWER)	12.06.18
K	ADDITION WESTERN COLUMN CLADDING DA MODIFICATION 6 (TOWER)	26.03.18
J	DA MODIFICATION 6 (TOWER)	23.10.17
HT	DELETE HATCH DA MODIFICATION 3 (PODIUM)	19.10.17
H	DA MODIFICATION 3 (PODIUM)	21.04.17
G	AMENDED DEVELOPMENT APPLICATION	12.04.17
F	AMENDED DEVELOPMENT APPLICATION	14.02.17
E	AMENDED DEVELOPMENT APPLICATION	22.03.16
D	AMENDED DEVELOPMENT APPLICATION	15.12.15
C	AMENDED DEVELOPMENT APPLICATION	23.10.15
B	DEVELOPMENT APPLICATION	20.08.13
A	FINAL DRAFT	23.07.13
-	ISSUED FOR INFORMATION	19.07.13

**ARCHITECT**

HASSELL Limited ABN 007 711 435  
LEVEL 2, PIER 8/9,  
23 HICKSON ROAD  
SYDNEY NSW 2000 AUSTRALIA  
SYDNEY@HASSELLSTUDIO.COM  
T +61 2 9101 2000 F +61 2 9101 2100

**HASSELL**

**CLIENT**

**Grocon**

**PROJECT**

THE RIBBON HOTEL,  
SERVICED APARTMENTS AND RETAIL  
31 WHEAT ROAD, SYDNEY

**DRAWING TITLE**

GA ELEVATIONS - SHEET 4

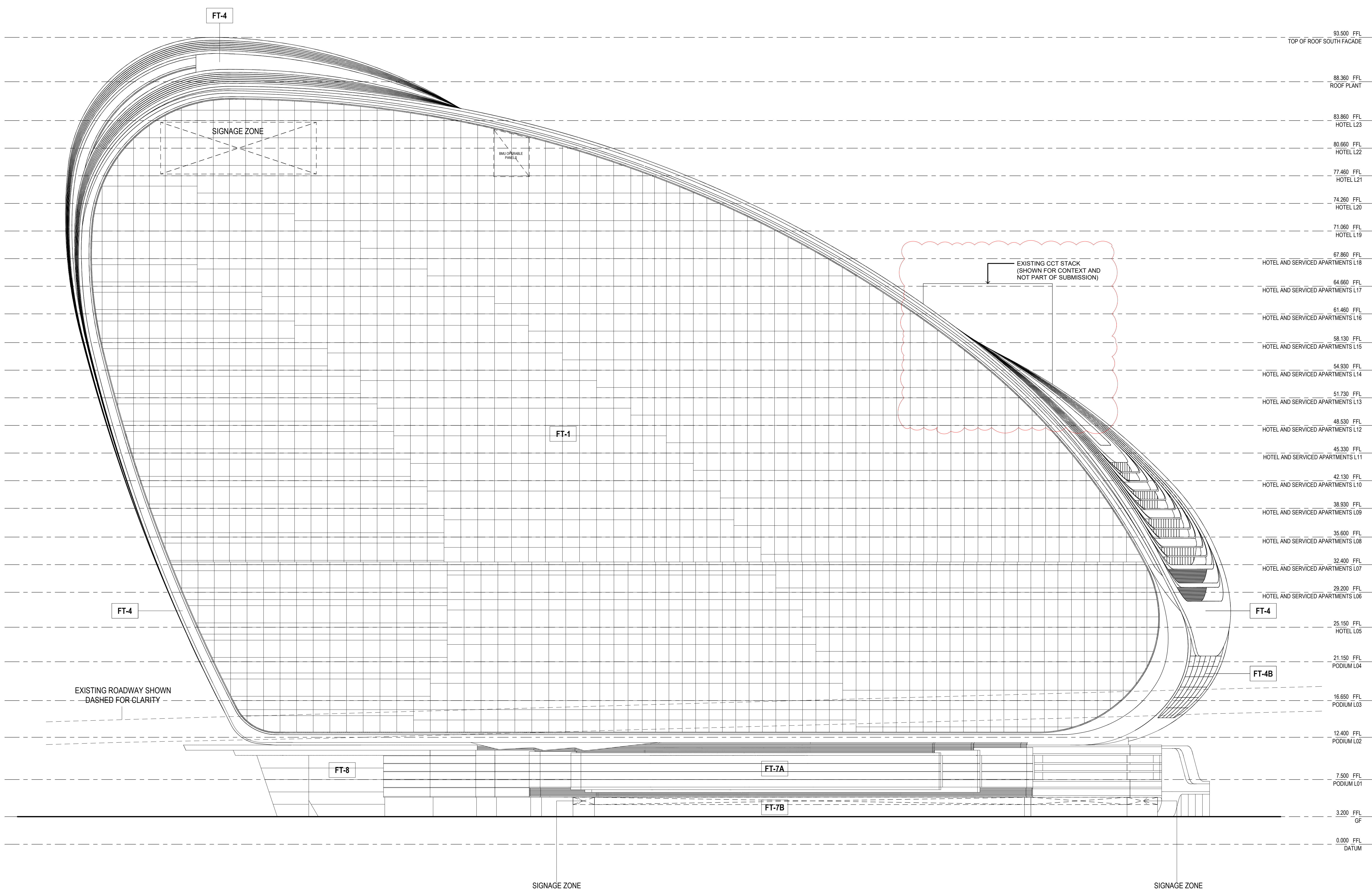
**STATUS**

FOR APPROVAL

SCALE @ B1	DRAWN	CO-ORD	REVIEWED	APPROVED
1:200	RT	MH	MH	EL

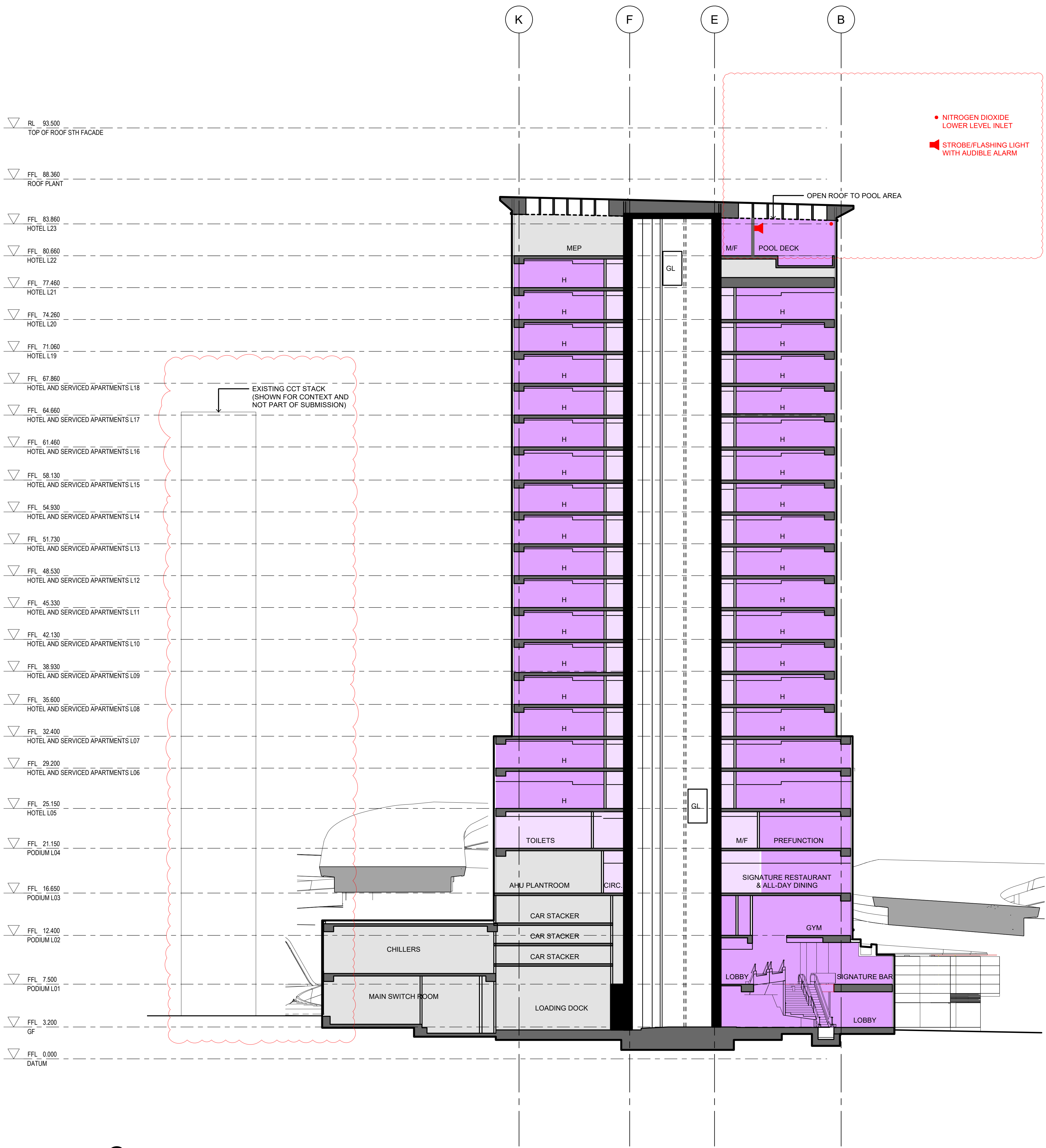
PROJECT NUMBER	DRAWING NUMBER	REV
A004409	ARC-HSL-DD-1153	N

Original Sheet Size B1-1000 x 707mm



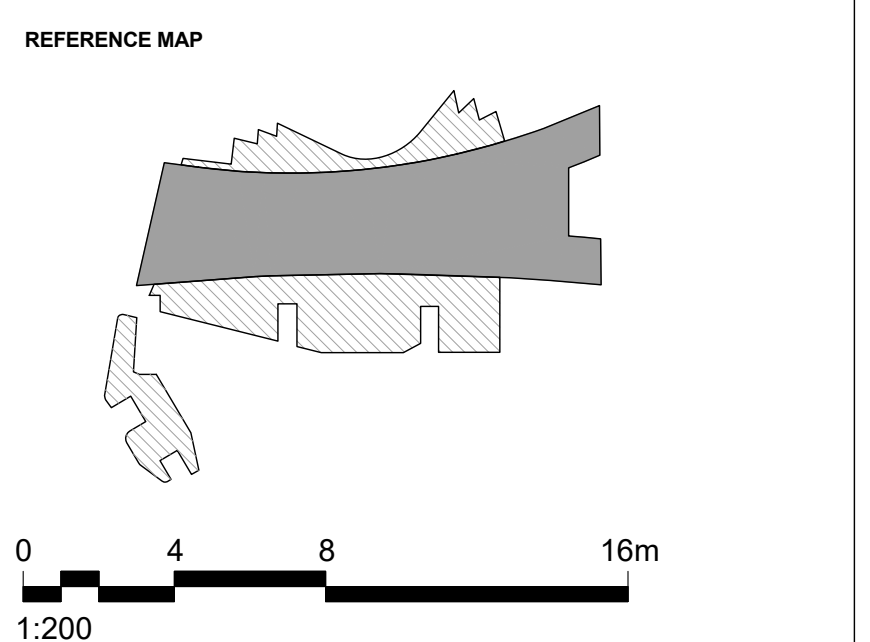
NORTH ELEVATION  
1:200

\\pdr\proj\1004409\Drawings\GA\Hotel GA\_Sheet4\_B0810\_1105\_rhns-A\hasvel 14510.dwg



- ▽ RL 93.500  
TOP OF ROOF 5TH FACADE
- ▽ FFL 88.350  
ROOF PLANT
- ▽ FFL 83.860  
HOTEL L23
- ▽ FFL 80.660  
HOTEL L22
- ▽ FFL 77.460  
HOTEL L21
- ▽ FFL 74.260  
HOTEL L20
- ▽ FFL 71.060  
HOTEL L19
- ▽ FFL 67.860  
HOTEL AND SERVICED APARTMENTS L18
- ▽ FFL 64.660  
HOTEL AND SERVICED APARTMENTS L17
- ▽ FFL 61.460  
HOTEL AND SERVICED APARTMENTS L16
- ▽ FFL 58.130  
HOTEL AND SERVICED APARTMENTS L15
- ▽ FFL 54.930  
HOTEL AND SERVICED APARTMENTS L14
- ▽ FFL 51.730  
HOTEL AND SERVICED APARTMENTS L13
- ▽ FFL 48.530  
HOTEL AND SERVICED APARTMENTS L12
- ▽ FFL 45.330  
HOTEL AND SERVICED APARTMENTS L11
- ▽ FFL 42.130  
HOTEL AND SERVICED APARTMENTS L10
- ▽ FFL 38.930  
HOTEL AND SERVICED APARTMENTS L09
- ▽ FFL 35.600  
HOTEL AND SERVICED APARTMENTS L08
- ▽ FFL 32.400  
HOTEL AND SERVICED APARTMENTS L07
- ▽ FFL 29.200  
HOTEL AND SERVICED APARTMENTS L06
- ▽ FFL 25.150  
HOTEL L05
- ▽ FFL 21.150  
PODIUM L04
- ▽ FFL 16.650  
PODIUM L03
- ▽ FFL 12.400  
PODIUM L02
- ▽ FFL 7.500  
PODIUM L01
- ▽ FFL 3.200  
GF
- ▽ FFL 0.000  
DATUM

**C SECTION**  
1:200



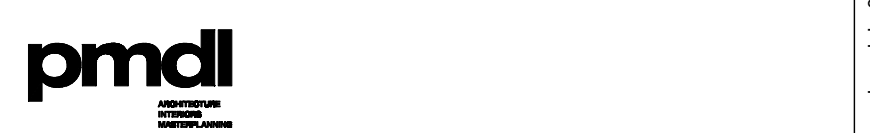
- NOTES**
1. DO NOT SCALE DRAWINGS. WRITTEN DIMENSIONS GOVERN.
  2. ALL DIMENSIONS ARE IN MILLIMETRES UNLESS NOTED OTHERWISE.
  3. ALL DIMENSIONS SHALL BE VERIFIED ON SITE BEFORE PROCEEDING WITH THE WORK. HASSELL SHALL BE NOTIFIED IN WRITING OF ANY DISCREPANCIES.
  4. THIS DRAWING MUST BE READ IN CONJUNCTION WITH ALL RELEVANT CONTRACTS, SPECIFICATIONS AND DRAWINGS.

© COPYRIGHT OF THIS DRAWING IS VESTED IN HASSELL LTD.  
2017 HASSELL LTD.  
THIS DRAWING IS AN UNCONTROLLED COPY, UNLESS NOTED OTHERWISE.

REV	DESCRIPTION	DATE
O	DA MODIFICATION 7 (OPEN ROOF POOL)	27.03.2019
N	DA MODIFICATION 7 (OPEN ROOF POOL)	23.11.2018
M	AMENDED HOTEL POOL ROOF DA MOD 6 (TOWER)	10.08.18
L1	INTERIOR FITOUT AMENDMENTS CLOUDED DA MOD 6 (TOWER)	12.06.18
L	AMENDED INTERIOR FITOUT DA MODIFICATION 6 (TOWER)	26.03.18
K	DA MODIFICATION 6 (TOWER)	23.10.17
J1	DELETE HATCH AMENDED REVISION DESCRIPTION DA MODIFICATION 5 (ROOM MIX)	23.10.17
J	DA MODIFICATION 4 (ROOM MIX)	15.05.17
HT	DELETE HATCH DA MODIFICATION 3 (PODIUM)	19.10.17
H	DA MODIFICATION 3 (PODIUM)	21.04.17
G	AMENDED DEVELOPMENT APPLICATION	12.04.17
F	AMENDED DEVELOPMENT APPLICATION	14.02.17
E	AMENDED DEVELOPMENT APPLICATION	14.12.16
D	AMENDED DEVELOPMENT APPLICATION	15.12.15
C	AMENDED DEVELOPMENT APPLICATION	23.10.15
B	DEVELOPMENT APPLICATION	20.08.13
A	FINAL DRAFT	23.07.13
-	ISSUED FOR INFORMATION	19.07.13

**ARCHITECT**  
HASSELL Limited ABN 007 711 435  
LEVEL 2, PIER 6/9,  
23 HICKSON ROAD  
SYDNEY NSW 2000 AUSTRALIA  
SYDNEY@HASSELLSTUDIO.COM  
T +61 2 9101 2000 F +61 2 9101 2100

**HASSELL**



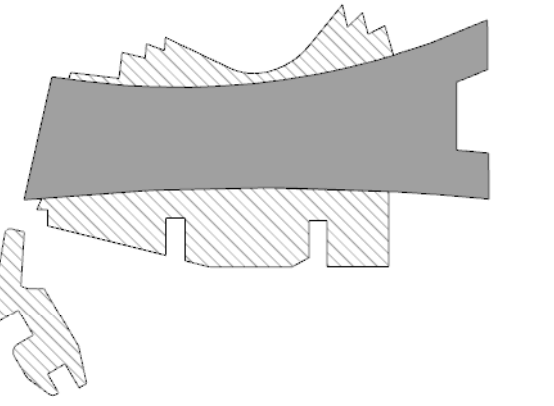
PROJECT  
**THE RIBBON HOTEL,  
SERVICED APARTMENTS AND RETAIL**  
31 WHEAT ROAD, SYDNEY

DRAWING TITLE  
**GA SECTIONS - SHEET 2**

STATUS  
**FOR APPROVAL**

SCALE @ B1	DRAWN	CO-ORD	REVIEWED	APPROVED
1:200	RT	MH	MH	EL
PROJECT NUMBER	DRAWING NUMBER	REV		
A004409	ARC-HSL-DD-1201	O		

\\pdrive\j1004409\Drawings\GA\Hotel DA\_SectionRt\_Jan\_2017\SectionRt\_Mat 7\Revised.mxd - 004409\_TheRibbon\_HotelDA\_S06\_d\_B0810\_1105\_rhns-Antasave14510.dwg 3/27/2019 4:44:08 PM Original Sheet Size B1-1000 x 707mm



- NOTES**
- DO NOT SCALE DRAWINGS. WRITTEN DIMENSIONS GOVERN.
  - ALL DIMENSIONS ARE IN MILLIMETRES UNLESS NOTED OTHERWISE.
  - ALL DIMENSIONS SHALL BE VERIFIED ON SITE BEFORE PROCEEDING WITH THE WORK. HASSELL SHALL BE NOTIFIED IN WRITING OF ANY DISCREPANCIES.
  - THIS DRAWING MUST BE READ IN CONJUNCTION WITH ALL RELEVANT CONTRACTS, SPECIFICATIONS AND DRAWINGS.

© COPYRIGHT OF THIS DRAWING IS VESTED IN HASSELL LTD.  
2017 HASSELL LTD.

THIS DRAWING IS AN UNCONTROLLED COPY, UNLESS NOTED OTHERWISE.

REV	DESCRIPTION	DATE
O	DA MODIFICATION 7 (OPEN ROOF POOL)	27.03.2019
N	DA MODIFICATION 7 (OPEN ROOF POOL)	23.11.2018
M1	INTERIOR FITOUT AMENDMENTS CLOUDED DA MOD 6 (TOWER)	12.06.18
M	AMENDED INTERIOR FITOUT DA MODIFICATION 6 (TOWER)	26.03.18
L	DA MODIFICATION 6 (TOWER)	23.10.17
K1	DELETE HATCH AMENDED REVISION DESCRIPTION DA MODIFICATION 5 (ROOM MIX)	23.10.17
K	DA MODIFICATION 4 (ROOM MIX)	15.05.17
J1	DELETE HATCH DA MODIFICATION 3 (PODIUM)	19.10.17
J	DA MODIFICATION 3 (PODIUM)	21.04.17
H	AMENDED DEVELOPMENT APPLICATION	12.04.17
G	AMENDED DEVELOPMENT APPLICATION	14.02.17
F	AMENDED DEVELOPMENT APPLICATION	14.12.16
E	AMENDED DEVELOPMENT APPLICATION	22.03.16
D	AMENDED DEVELOPMENT APPLICATION	15.12.15
C	AMENDED DEVELOPMENT APPLICATION	23.10.15
B	DEVELOPMENT APPLICATION	20.08.13
A	FINAL DRAFT	23.07.13
-	ISSUED FOR INFORMATION	19.07.13

REV	DESCRIPTION	DATE
O	DA MODIFICATION 7 (OPEN ROOF POOL)	27.03.2019
N	DA MODIFICATION 7 (OPEN ROOF POOL)	23.11.2018
M1	INTERIOR FITOUT AMENDMENTS CLOUDED DA MOD 6 (TOWER)	12.06.18
M	AMENDED INTERIOR FITOUT DA MODIFICATION 6 (TOWER)	26.03.18
L	DA MODIFICATION 6 (TOWER)	23.10.17
K1	DELETE HATCH AMENDED REVISION DESCRIPTION DA MODIFICATION 5 (ROOM MIX)	23.10.17
K	DA MODIFICATION 4 (ROOM MIX)	15.05.17
J1	DELETE HATCH DA MODIFICATION 3 (PODIUM)	19.10.17
J	DA MODIFICATION 3 (PODIUM)	21.04.17
H	AMENDED DEVELOPMENT APPLICATION	12.04.17
G	AMENDED DEVELOPMENT APPLICATION	14.02.17
F	AMENDED DEVELOPMENT APPLICATION	14.12.16
E	AMENDED DEVELOPMENT APPLICATION	22.03.16
D	AMENDED DEVELOPMENT APPLICATION	15.12.15
C	AMENDED DEVELOPMENT APPLICATION	23.10.15
B	DEVELOPMENT APPLICATION	20.08.13
A	FINAL DRAFT	23.07.13
-	ISSUED FOR INFORMATION	19.07.13

**ARCHITECT**  
HASSELL Limited ABN 007 711 435  
LEVEL 2, PIER 6/9,  
55 HICKSON ROAD  
SYDNEY NSW 2000 AUSTRALIA  
SYDNEY@HASSELLSTUDIO.COM  
T +61 2 9101 2000 F +61 2 9101 2100

**HASSELL**

**pmdl**

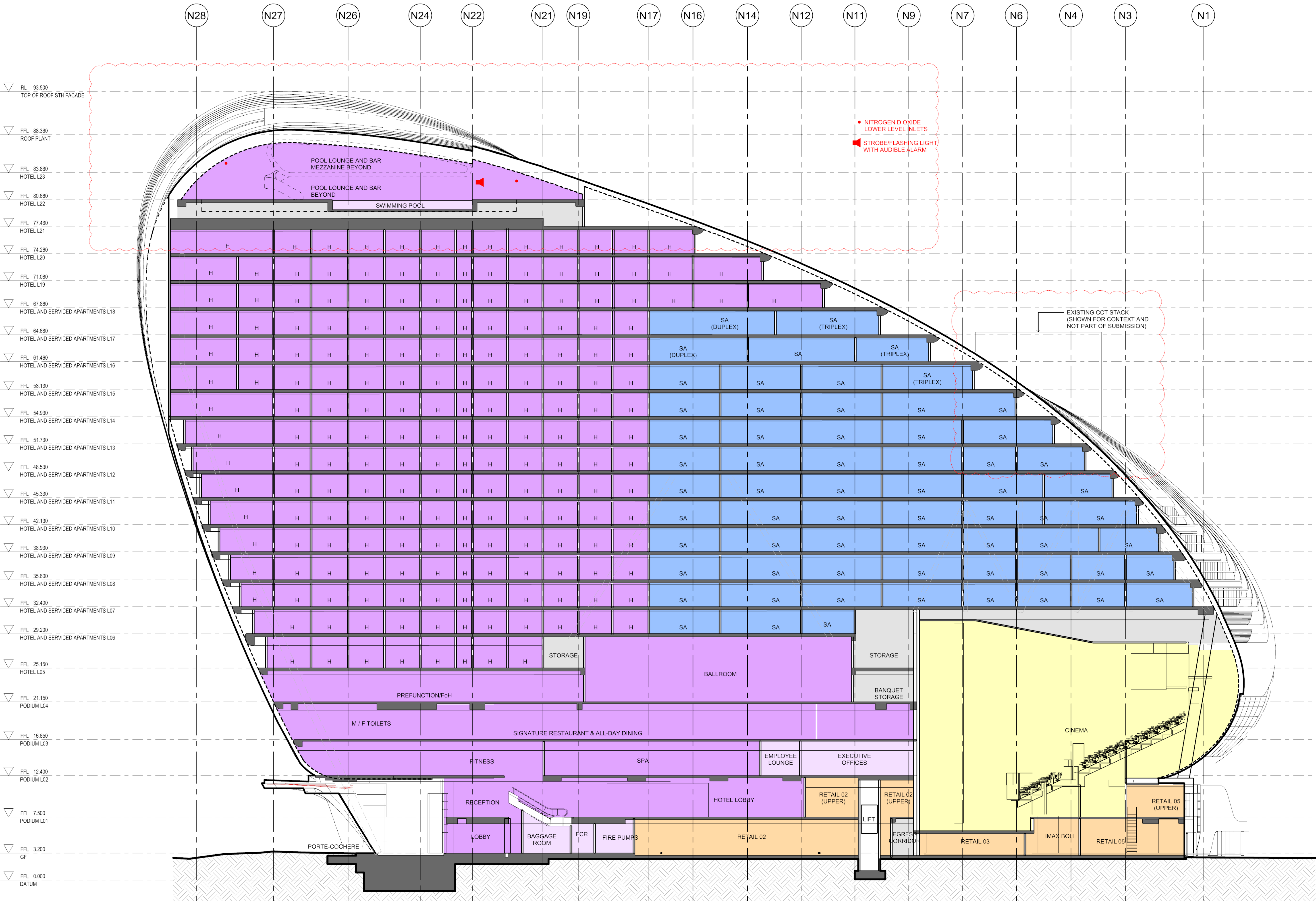
**Grocon**

**PROJECT**  
THE RIBBON HOTEL,  
SERVICED APARTMENTS AND RETAIL  
31 WHEAT ROAD, SYDNEY

**DRAWING TITLE**  
GA SECTIONS - SHEET 5

**STATUS**  
FOR APPROVAL

SCALE @ B1	DRAWN	CO-ORD	REVIEWED	APPROVED
1:200	RT	MH	MH	EL
PROJECT NUMBER	DRAWING NUMBER	REV		
A004409	ARC-HSL-DD-1204	O		



**F SECTION**  
1:200

I:\projects\1004409\Drawings\GA\1204\_GA\_Sections\1204\_GA\_Sections\_Sheet 5.dwg, Date: 2017-03-20, Time: 14:45:30