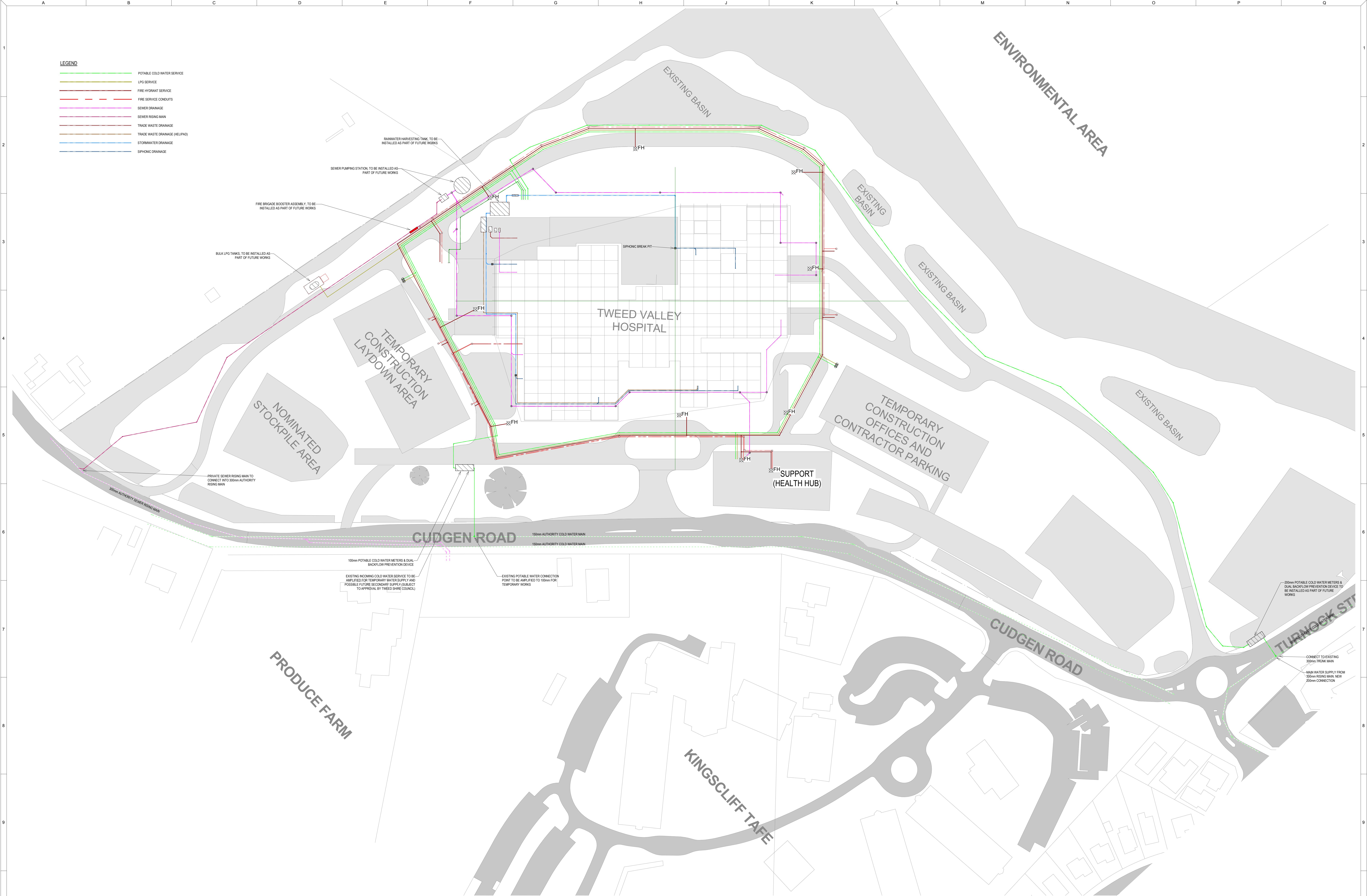


HYDRAULIC SERVICES DRAWINGS



REVISION / AMENDMENTS

Rev	Date	Description	Verified
0	18.04.19	PRELIMINARY ISSUE	D.G.M.
1	03.05.19	PRELIMINARY ISSUE	D.G.M.
2	06.05.19	PRELIMINARY ISSUE	D.G.M.

OUT OF STRATA

SERVICE SHOWN ON THIS DRAWING ARE BEYOND SUB

CLIENT

NSW **GOVERNMENT**

Health **Infrastructure**

ARCHITECT

STH

SILVER THOMAS HANLEY

CONSULTANT

JHA

Level 21, 151 Miller Street,
North Sydney
NSW 2060
Australia
+61 (0) 9437 1000
general@hoganjones.com.au
www.hoganjones.com.au

PROJECT

TWEED VALLEY HOSPITAL

TITLE

**HYDRAULIC SERVICES
PROPOSED EARLY WORKS
SITE PLAN**

PRELIMINARY ISSUE
NOT TO BE USED FOR CONSTRUCTION

DRAWN	CHECKED	APPROVED	CREATED

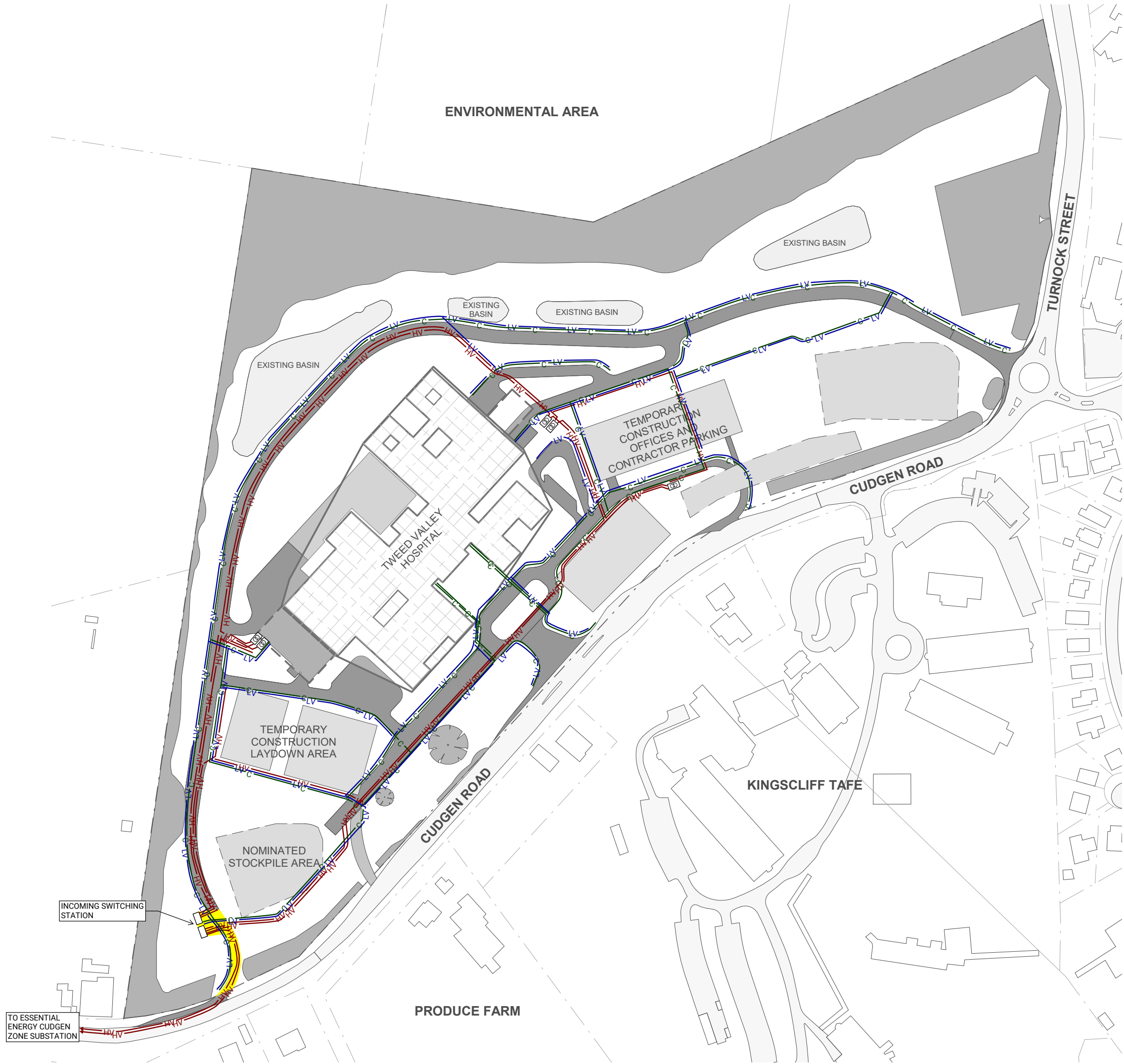
DRAWING No:
130559-JHA-HY-DWG-0002

SCALE @ A0

1 : 750

REV
2

ELECTRICAL ENGINEERING DRAWINGS



LEGEND

- HV HIGH VOLTAGE UNDERGROUND CABLE ROUTE
- LV LOW VOLTAGE UNDERGROUND CABLE ROUTE
- C COMMUNICATIONS/SECURITY UNDERGROUND CABLE ROUTE
- PRIVATE KIOSK SUBSTATION
- ESSENTIAL ENERGY EASEMENT

No.	Description	Date	By	Chk
-----	-------------	------	----	-----

Services Consultant



LCI

LCI CONSULTANTS
(AUSTRALIA) PTY/LTD

LEVEL 4, 73 WALKER STREET,
NORTH SYDNEY, NSW, 2060
ABN: 92 124 107 973

Project
TWEED VALLEY HOSPITAL

Drawing Title
SSD STAGE 1 DA
ELECTRICAL AND COMMUNICATIONS

Status
PRELIMINARY (2019-05-06)

Scale @
1:2500@A3

Project No.
18202

Drawing No.
LCI-EL-DWG-SSI-1000001

Rev
P8