



# **SSD STAGE 1 DA DRAWINGS**

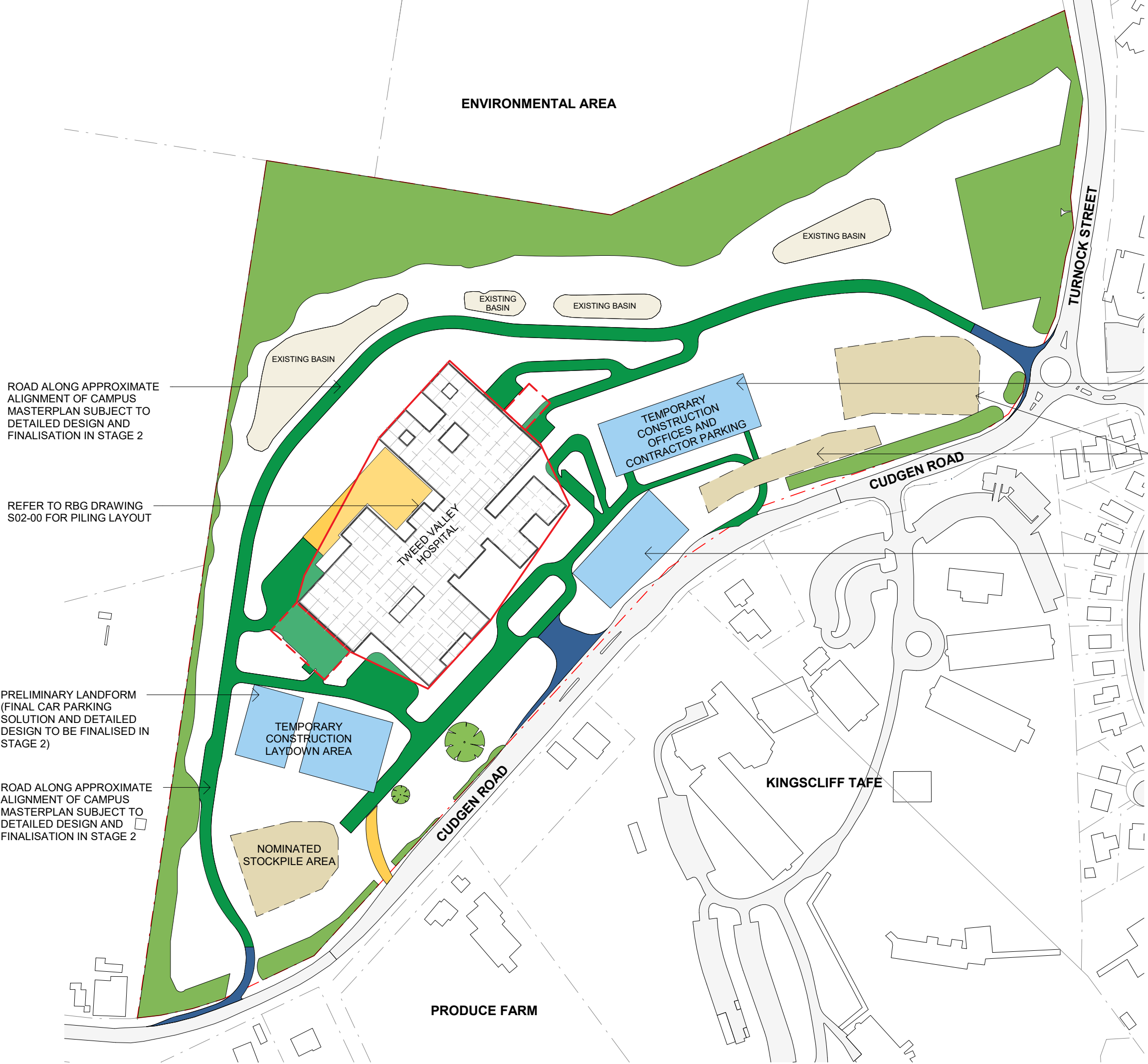


# ARCHITECTURAL DRAWINGS









ROAD ALONG APPROXIMATE ALIGNMENT OF CAMPUS MASTERPLAN SUBJECT TO DETAILED DESIGN AND FINALISATION IN STAGE 2

REFER TO RBG DRAWING S02-00 FOR PILING LAYOUT

PRELIMINARY LANDFORM (FINAL CAR PARKING SOLUTION AND DETAILED DESIGN TO BE FINALISED IN STAGE 2)

ROAD ALONG APPROXIMATE ALIGNMENT OF CAMPUS MASTERPLAN SUBJECT TO DETAILED DESIGN AND FINALISATION IN STAGE 2

PRELIMINARY LANDFORM (FINAL CAR PARKING SOLUTION AND DETAILED DESIGN TO BE FINALISED IN STAGE 2)

TEMPORARY CONSTRUCTION STOCKPILE AREA

STAGE 1TEMPORARY CONSTRUCTION OFFICES AND CONTRACTOR PARKING AS REQUIRED

LEGEND

SITE BOUNDARY

MAXIMUM PLANNING ENVELOPE ABOVE GROUND LEVEL

MAXIMUM PLANNING ENVELOPE BELOW GROUND LEVEL

CONSTRUCTION ROAD ALONG APPROXIMATE ALIGNMENT OF FINAL CAMPUS ROAD (DETAILS TO BE FINALISED IN STAGE 2)

ROAD INTERSECTION CONSTRUCTED IN ACCORDANCE WITH S.138 APPROVAL REFLECTING FINAL ALIGNMENT. TEMPORARY SEAL (FINAL SEAL, KERBING, FOOTPATH / CYCLEWAY (AS RELEVANT), LINE MARKING ETC. TO BE COMPLETED IN STAGE 2

TEMPORARY CONSTRUCTION ROAD

EXISTING TREES TO BE RETAINED REFER "L-EIS-1 TREE REMOVAL AND PRESERVATION PLAN"

00	ISSUED FOR INFORMATION	20/09/2018
01	ISSUED FOR INFORMATION	22/01/2019
02	ISSUED FOR INFORMATION	23/04/2019
03	ISSUED FOR INFORMATION	02/05/2019
04	ISSUED FOR INFORMATION	03/05/2019

COPYRIGHT

ALL RIGHTS RESERVED. THIS WORK IS COPYRIGHT AND CANNOT BE REPRODUCED OR COPIED IN ANY FORM OR BY ANY MEANS (GRAPHIC, ELECTRONIC OR MECHANICAL, INCLUDING PHOTOCOPYING) WITHOUT THE WRITTEN PERMISSION OF THE PRINCIPAL. UNDER THE TERMS OF THE CONTRACT, ANY LICENCE, EXPRESS OR IMPLIED, TO USE THE DOCUMENT FOR ANY PURPOSE WHATSOEVER IS RESTRICTED TO THE TERMS OF THE AGREEMENT OR IMPLIED AGREEMENT WITH THE PRINCIPAL UNDER THE TERMS OF THE CONTRACT.

DIMENSIONS

USE FIGURED DIMENSIONS, DO NOT SCALE. CONTRACTORS MUST VERIFY ALL DIMENSIONS ON THE SITE BEFORE COMMENCING ANY WORK OR MAKING ANY SHOP DRAWING WHICH MUST BE SUBMITTED AND REVIEWED BEFORE MANUFACTURE.

FIXTURES, FITTINGS & EQUIPMENT SPECIFICATIONS

SUBSTITUTE FF&E EQUIPMENT SPECIFICATIONS  
THE FIT-OUT DESIGN AND DOCUMENTATION HAS BEEN COMPLETED ON THE BASIS OF FF&E AND EQUIPMENT ADVISED TO THIS OFFICE AT THE TIME OF BRIEFING THE DESIGN. THE DESIGN PROVISIONS FOR FF&E AND EQUIPMENT INCORPORATES SPATIAL ALLOCATIONS, SERVICING, LOADING AND ACCESS CLEARANCES AND WHERE APPROPRIATE SERVICES REQUIREMENTS, HAVING DUE REGARD FOR SURROUNDING FIXTURES AND FITTINGS. IT SHOULD BE NOTED THAT SUBSTITUTE FF&E OR EQUIPMENT WITH ALTERNATE SPECIFICATIONS SHOULD NOT BE PROCURED PRIOR TO VALIDATING THOSE SPECIFICATIONS AGAINST THE ITEM CONTROL, SCHEDULE AND DESIGN PROVISIONS IN THE MODEL. THIS OFFICE ACCEPTS NO RESPONSIBILITY FOR THE PROCUREMENT OF SUBSTITUTE FF&E AND EQUIPMENT WHICH HAS NOT BEEN REVIEWED AND VALIDATED AGAINST THE ORIGINAL DESIGN PROVISIONS.

SERVICE POINTS DISCLAIMER

THE SERVICE POINTS IDENTIFIED ON THESE DRAWINGS HAVE BEEN OVERLAYED FROM THE BUILDING SERVICES ENGINEERING MODEL, AND ARE PROVIDED FOR INFORMATION AND SET-OUT PURPOSES ONLY. WE HAVE BEEN ADVISED BY THE SERVICES ENGINEERS THAT THE POINTS REPRESENTED ON THESE DRAWINGS ARE CORRECT AT THE TIME OF PUBLICATION. THIS OFFICE DOES NOT WARRANT THE ACCURACY OF THIS DATA, REFER TO THE BUILDING SERVICES ENGINEERING DOCUMENTATION FOR THE INSTALLATION OF THE SERVICES POINTS, AND THE INTERFACE BETWEEN THE SERVICES POINTS AND THE RESPECTIVE ENGINEERING SYSTEMS.

ARCHITECTS

STH

BATESSMART.

ABN: 21 134 476 065  
LEVEL 4, 89 YORK STREET  
SYDNEY NSW 2000, AUSTRALIA  
PH: (02) 8299 4600 FAX: (03) 9885 2455

43 BRISBANE STREET,  
SURREY HILLS, NSW 2010  
ABN: 68 094 740 986 PH: (02) 8354 5100  
E: syd@batesmart.com.au

THIS ARCHITECTURAL DESIGN IS THE COPYRIGHT OF SILVER THOMAS HANLEY AND BATES SMART AND SHALL NOT BE REPRODUCED WITHOUT THEIR WRITTEN PERMISSION

PROJECT MANAGER

TSA

MANAGEMENT

CLIENT

NSW

GOVERNMENT

Health

Infrastructure

Health

Northern NSW

Local Health District

PROJECT

TWEED VALLEY HOSPITAL

771 Cudgen Road, Cudgen

DRAWING TITLE

STAGE 1 EARLY AND ENABLING WORKS CONSTRUCTION

GENERAL ARRANGEMENT

SCALE

0 25 50 75 100 125

m

SCALE

1:2500@A3

DATE

03/05/2019

DRAWN BY

SL

CHECKED

AB

PROJECT No

10363.00

DRAWING No

AR-SKE-10-110

REVISION

04

BIM 360/Tweed Valley Hospital/TVH\_BUILDING\_A18.rvt

# **LANDSCAPE ARCHITECTURAL DRAWINGS**

# LANDSCAPE PROPOSAL







## TREE REMOVAL AND PRESERVATION PLAN

Hospital planning has focused development high on the site and with an appropriate offset from the northern bush covered wetland to ensure it is undisturbed.

Existing windbreak planting to Cudgen Rd is proposed for retention where possible to mitigate visual impacts of the development and spray drift from adjacent farmland. Removal of vegetation is required in some locations to accommodate road widening, new entry roadways, and easements. Vegetated buffer zones along Cudgen Rd will be designed to supplement the existing buffer planting.

Existing trees will be retained wherever possible, and integrated as landscape features of the development.

### LEGEND

-  Existing trees to be retained in accordance with BMP (Biodiversity Management Plan). (TPZ in accordance with arborist report and AS 4970-2009)
-  Existing Fruit Tree Orchard to be retained
-  Existing trees to be removed (due to development footprint and road works)
-  High retention value tree - to be retained (TPZ in accordance with arborist report and AS 4970-2009)
-  Moderate retention value tree - to be retained if possible, pending detail civil roadworks design
-  Moderate retention value tree - to be removed

