

# Appendix 9

## Updated Blast Impact Assessment

Prepared by Vipac Engineers & Scientists Ltd  
September 2018

(Total No. of pages including blank pages = 16)

\* A colour version of this Appendix is available on the digital version of this document



This page has intentionally been left blank



**Vipac Engineers & Scientists Ltd.**

4/5 Leo Lewis Close, Toronto, NSW 2283, Australia

PO Box 306, Toronto, NSW 2283, Australia

t. +61 2 4950 5833 | f. +61 2 4950 4276 | e. [hunternvalley@vipac.com.au](mailto:hunternvalley@vipac.com.au)

w. [www.vipac.com.au](http://www.vipac.com.au) | A.B.N. 33 005 453 627 | A.C.N. 005 453 627

## **Vipac Engineers & Scientists**

**Hanson Construction Materials**

**Hanson - Brandy Hill Quarry**

## **Updated Blast Impact Assessment**






29N-14-0060-TRP-517408-6

7 September 2018



Hanson Construction Materials  
Hanson - Brandy Hill Quarry  
Updated Blast Impact Assessment

Updated Blast Impact Assessment Hanson - Brandy Hill Quarry																										
<b>DOCUMENT NO:</b> 29N-14-0060-TRP-517408-6 <b>PREPARED FOR:</b> <b>Hanson Construction Materials</b> Level 5, 75 Georges Street Parramatta, New South Wales, 2150, Australia  <b>CONTACT:</b> Belinda Pignone <b>Tel:</b> +61 2 9354 2774 <b>Fax:</b> +612 9354 2695		<b>REPORT CODE:</b> TRP <b>PREPARED BY:</b> <b>Vipac Engineers &amp; Scientists Ltd.</b> 2 Sirius Road, Lane Cove West, NSW 2066 Australia  <b>Tel:</b> +61 2 9422 4222 <b>Fax:</b> +61 2 9420 5911																								
<b>PREPARED BY:</b> Author:   Darren Van Twest <b>Director</b>		Date: 7 Sep 2018																								
<b>REVIEWED BY:</b> Reviewer:   Peter Teague <b>Reviewing Acoustic Consultant</b>		Date: 7 Sep 2018																								
<b>AUTHORISED BY:</b>   Darren Van Twest <b>Director</b>		Date: 7 Sep 2018																								
<b>REVISION HISTORY</b> <table border="1"> <thead> <tr> <th>Revision No.</th> <th>Date Issued</th> <th>Reason/Comments</th> </tr> </thead> <tbody> <tr> <td>0</td> <td>18 Nov 2014</td> <td>Initial Issue</td> </tr> <tr> <td>1</td> <td>30 Mar 2015</td> <td>Minor Amendments</td> </tr> <tr> <td>2</td> <td>15 Apr 2015</td> <td>Final</td> </tr> <tr> <td>3</td> <td>10 Dec 2015</td> <td>Adequacy Review</td> </tr> <tr> <td>4</td> <td>8 Sep 2017</td> <td>EPA Responses</td> </tr> <tr> <td>5</td> <td>29 Jun 2018</td> <td>EPA Responses</td> </tr> <tr> <td>6</td> <td>7 Sep 2018</td> <td>Final report</td> </tr> </tbody> </table>			Revision No.	Date Issued	Reason/Comments	0	18 Nov 2014	Initial Issue	1	30 Mar 2015	Minor Amendments	2	15 Apr 2015	Final	3	10 Dec 2015	Adequacy Review	4	8 Sep 2017	EPA Responses	5	29 Jun 2018	EPA Responses	6	7 Sep 2018	Final report
Revision No.	Date Issued	Reason/Comments																								
0	18 Nov 2014	Initial Issue																								
1	30 Mar 2015	Minor Amendments																								
2	15 Apr 2015	Final																								
3	10 Dec 2015	Adequacy Review																								
4	8 Sep 2017	EPA Responses																								
5	29 Jun 2018	EPA Responses																								
6	7 Sep 2018	Final report																								
<b>DISTRIBUTION</b> <table border="1"> <thead> <tr> <th>Copy No. <u>2</u></th> <th>Location</th> </tr> </thead> <tbody> <tr> <td>1</td> <td>Project</td> </tr> <tr> <td>2</td> <td>Client (PDF Format)</td> </tr> </tbody> </table> <div style="text-align: right;">Uncontrolled Copy</div>			Copy No. <u>2</u>	Location	1	Project	2	Client (PDF Format)																		
Copy No. <u>2</u>	Location																									
1	Project																									
2	Client (PDF Format)																									

NOTE: This is a controlled document within the document control system. If revised, it must be marked SUPERSEDED and returned to the Vipac QA Representative. This document contains commercial, conceptual and engineering information that is proprietary to Vipac Engineers & Scientists Ltd. We specifically state that inclusion of this information does not grant the Client any license to use the information without Vipac's written permission. We further require that the information not be divulged to a third party without our written consent

7 September 2018

29N-14-0060-TRP-517408-6

Page 2 of 14

Commercial-In-Confidence



Hanson Construction Materials  
Hanson - Brandy Hill Quarry  
Updated Blast Impact Assessment

## **EXECUTIVE SUMMARY**

Vipac Engineers and Scientists Ltd (Vipac) was commissioned by Hanson Construction Materials to conduct a Blast Impact Assessment for the proposed expansion of the existing Brandy Hill Quarry, at 979 Clarence Town Road, NSW. Ground vibration and airblast overpressure are two common environmental effects of blasting that can cause human discomfort.

The proposed expansion will involve extending the life of the quarry to allow for extraction of additional resources up to 1.5 million tonnes per annum. The proposed extraction area extension is approximately 1,000m by 900m. In order to accommodate the proposed extraction area, it is proposed to relocate the existing plant infrastructure approximately 500m south of the current location.

All noise sensitive receivers are located 860m or more from the nearest future quarry pit boundary. Noise sensitive receivers are located to the west, south and east of the quarry.

This report presents the results of historical ground vibration and airblast overpressure measurements that have been carried out at Brandy Hill quarry and provides worst case predictions for future blasting based on this data. The future blast impacts are assessed according to the EPA Environmental Protection Licence Conditions.

The assessment finds that blast impacts from the proposed quarry extension can be readily controlled within acceptable values using existing blast practices. This is because the minimum separation distance between the quarry pit and the nearest receiver is sufficient for adequate control of the propagation of ground vibration and airblast overpressure. Analysis of historical data shows that compliance with the environmental conditions has been achieved. Consideration of future blast impacts shows that the acceptable levels can be achieved using typical blast designs and good blasting practice.

It is recommended that all blasting conducted at the proposed quarry site be monitored using best practices, with monitors located as close as practical to the sensitive receivers, between the blast and the receiver.

A Blast Management Plan should be implemented to ensure compliance with the EPA EPL Conditions. It includes the use of routinely updated vibration and overpressure data in the design of blasts, which is a vital step in managing impacts in sensitive areas.

7 September 2018

29N-14-0060-TRP-517408-6

Page 3 of 14

*Commercial-In-Confidence*



Hanson Construction Materials

Hanson - Brandy Hill Quarry  
Updated Blast Impact Assessment

## TABLE OF CONTENTS

<b>1</b>	<b>INTRODUCTION .....</b>	<b>5</b>
<b>2</b>	<b>PROJECT DESCRIPTION .....</b>	<b>5</b>
2.1	Site Location .....	5
2.2	Existing Quarry Operation .....	5
2.3	Proposed Expansion .....	5
2.4	Noise Sensitive Receivers .....	5
<b>3</b>	<b>HISTORICAL BLAST IMPACT MEASUREMENTS.....</b>	<b>11</b>
<b>4</b>	<b>CRITERIA .....</b>	<b>13</b>
4.1	EPA Conditions.....	13
4.2	ANZECC .....	13
4.3	AS2187.2 .....	13
4.4	Livestock .....	13
<b>5</b>	<b>BLASTING DETAILS .....</b>	<b>14</b>
<b>6</b>	<b>BLAST IMPACT ASSESSMENT .....</b>	<b>14</b>

7 September 2018

29N-14-0060-TRP-517408-6

Page 4 of 14

Commercial-In-Confidence



## 1 INTRODUCTION

Vipac Engineers and Scientists Ltd (Vipac) was commissioned by Hanson Construction Materials to conduct a Blast Impact Assessment for the proposed expansion of the existing Brandy Hill Quarry, at 979 Clarence Town Road, NSW. According to AS2187.2 (Explosives -Storage and use Part 2: Use of explosives), ground vibration and airblast overpressure are two common environmental effects of blasting that can cause human discomfort.

This report presents the results of historical ground vibration and airblast overpressure measurements that have been carried out at Brandy Hill quarry and provides worst case predictions for future blasting based on this data. The future blast impacts are assessed according to the EPA Environmental Protection Licence (EPL 1879) Conditions. Conclusions and recommendations are provided within this report.

## 2 PROJECT DESCRIPTION

### 2.1 SITE LOCATION

The Brandy Hill Quarry is located at 979 Clarence Town Road, Seaham, which is a suburb within the Port Stephens local government area in the Hunter Region of New South Wales. The quarry site is located approximately 12km north-west of Raymond Terrace, 3.5km west of Seaham and approximately 175km north of Sydney.

### 2.2 EXISTING QUARRY OPERATION

The quarry is located on a property that is approximately 554 hectares in area of which 18.6ha is occupied by the pit, 11.1ha by the plant and 5.3ha occupied by the stockpile area. The surrounding area is predominately zoned as rural landscape with minimal primary production. The quarry produces approximately 620,000 tonnes of material per year. Approximately 20 to 25 blasts will occur per annum. Road access to the quarry site is off Clarence Town Road at the intersection with Brandy Hill Drive.

Vipac understands that blasting operations typically occur within the hours of 9am to 5pm (Monday to Saturday).

### 2.3 PROPOSED EXPANSION

The proposed expansion will involve extending the life of the quarry to allow for extraction of additional resources up to 1.5 million tonnes per annum. The proposed extraction area extension (see **Figure 1**) includes resources beneath part of the existing quarry infrastructure area. The proposed quarry pit is approximately 1,000m (East - West) by approximately 900m (North - South). In order to accommodate the proposed extraction area, it is proposed to relocate the existing plant infrastructure approximately 500m south of the current location, as shown in **Figure 2**.

### 2.4 NOISE SENSITIVE RECEIVERS

A list of the nearest potentially affected noise sensitive receivers to the quarry is provided below in **Table 1**. The table lists the minimum distance from the residential structure to the **maximum proposed future quarry pit**, as opposed to the overall quarry site boundary which includes the processing areas, weighbridge and workshop/maintenance areas etc. All noise sensitive receivers are located 860m or more from the **nearest future quarry pit boundary**. A separation distance of approximately 800 to 1,000m is usually an acceptable buffer for blast impacts from quarries. The location of the properties is illustrated in **Figure 3** and **Figure 4**.

7 September 2018

29N-14-0060-TRP-517408-6

Page 5 of 14

Commercial-In-Confidence



Hanson Construction Materials

Hanson - Brandy Hill Quarry  
Updated Blast Impact Assessment

Noise sensitive receivers are located to the west, south and east of the quarry. The locations of existing blast monitoring sites are shown in **Figure 4**.

The distances presented in **Table 1** below differ from the distances stated in the Noise & Vibration Impact Assessment report (refer to **Table 3** of the Noise & Vibration Impact Assessment report) as the distances presented in the Noise & Vibration Impact Assessment report refer to the separation distance from the residential properties to the overall site boundary of the quarry, and take account of the proposed expansion area of the quarry and the relocation of the processing plant to the south of the current position of the processing plant.

This Blasting Impact Assessment has taken into consideration the separation distances from the future quarry pit boundary as this delineates the extent of the area where blasting will be undertaken. No blasting is proposed to be undertaken in the designated area to which the fixed processing plant will be relocated. Therefore the distances from the properties to the overall quarry site boundary are not applicable to the Blasting Impact Assessment in this context, but have been taken into consideration as presented in the Noise & Vibration Impact Assessment report.

**Table 1: Noise Sensitive Receivers**

Property ID	Distance approx. (m)	Address	Description
L01 (R09)	1,110	13 Giles Road, Seaham	Residential property
L02 (R10)	950	13B Giles Road, Seaham	Residential property
L03 (R13)	960	994 Clarence Town Road, Seaham	Residential property
L04 (R14)	860	1034 Clarence Town Road, Seaham	Residential property
L05 (R16)	980	1094 Clarence Town Road, Seaham	Residential property and poultry farm to rear
L06 (R17)	1,160	1189 Clarence Town Road, Seaham	Residential property
L07 (R07)	1,310	13 Mooghin Road, Seaham	Residential property

Livestock infrastructure is identified nearby to receivers L05 (at approximately 1100m) and L07 (at approximately 1600m). These sites are identified in **Figure 4** by a red "L" symbol.

7 September 2018

29N-14-0060-TRP-517408-6

Page 6 of 14

Commercial-In-Confidence





Hanson Construction Materials  
Hanson - Brandy Hill Quarry  
Updated Blast Impact Assessment

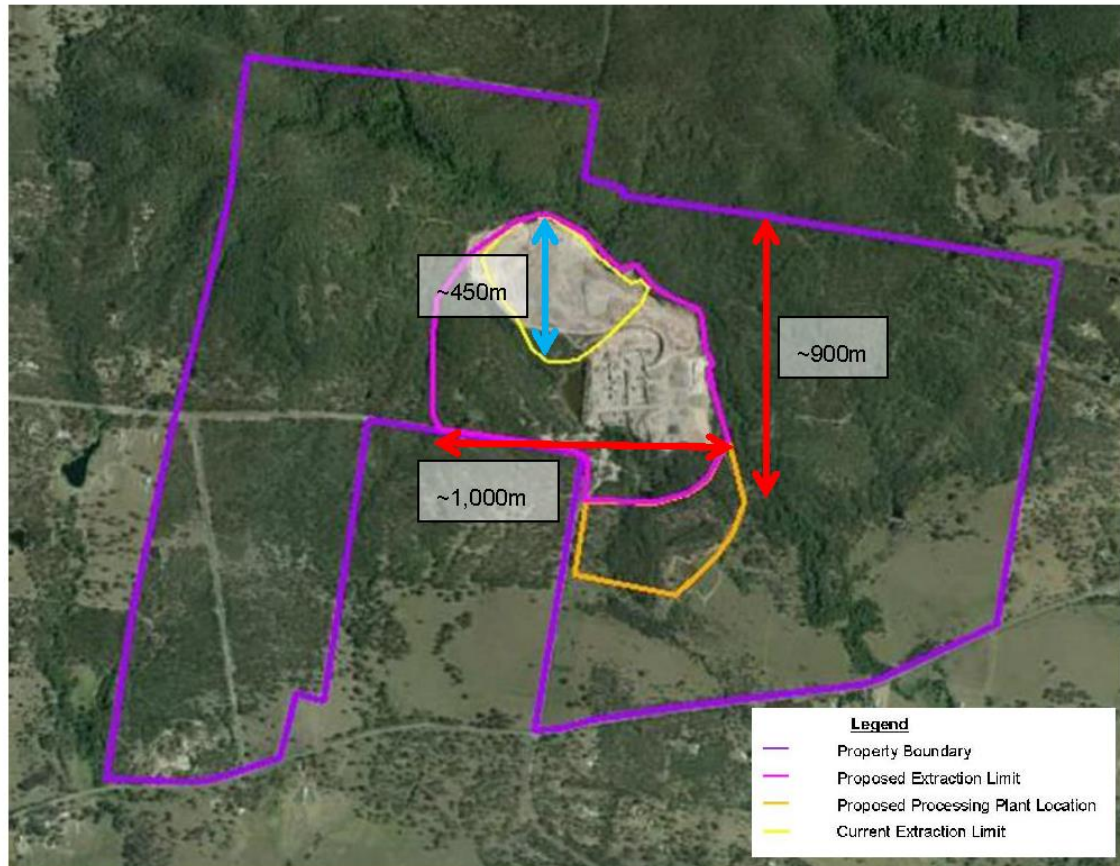


Figure 1: Current extraction area (yellow) with proposed extraction area (purple)

7 September 2018

29N-14-0060-TRP-517408-6

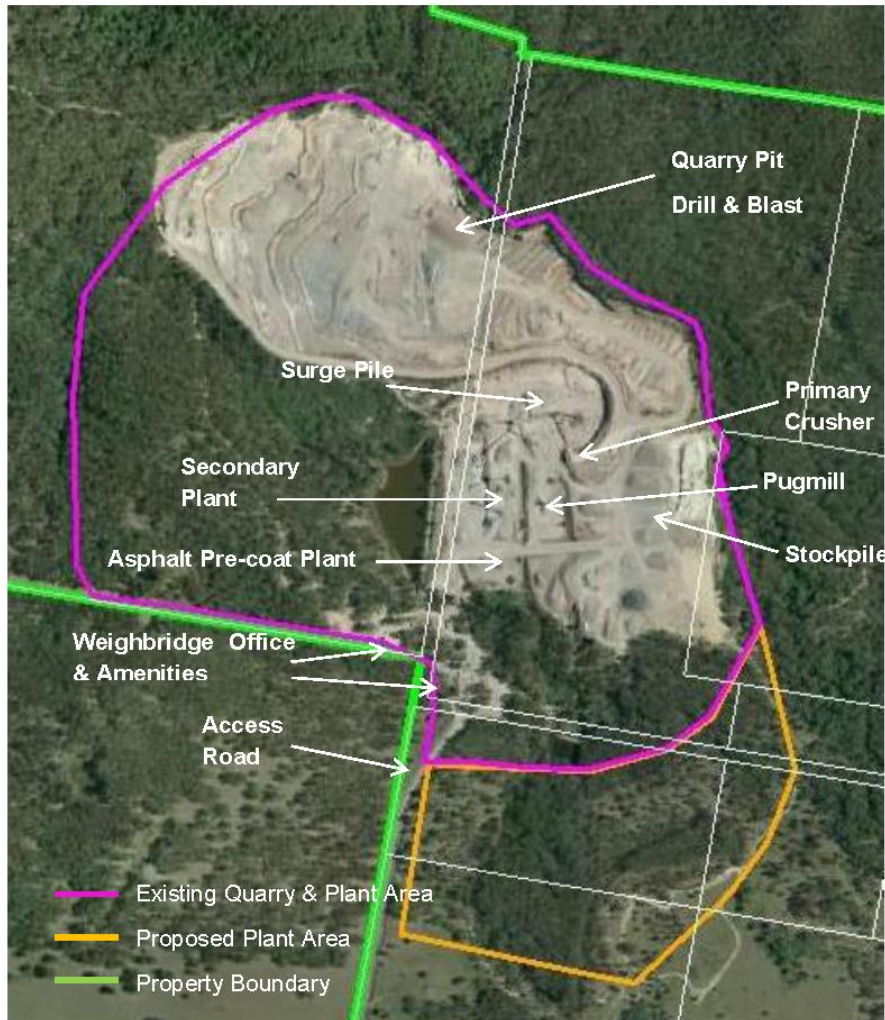
Page 7 of 14

Commercial-In-Confidence



Hanson Construction Materials

Hanson - Brandy Hill Quarry  
Updated Blast Impact Assessment



**Figure 2: Current Infrastructure Area with proposed Plant Infrastructure Area**

The location of the existing plant infrastructure is illustrated in the aerial photograph shown above in **Figure 2**. It should be noted that as part of the proposed quarry expansion plans, the existing plant infrastructure will be relocated to the area outlined above in orange (i.e. the Proposed Plant Area).

7 September 2018

29N-14-0060-TRP-517408-6

Page 8 of 14

Commercial-In-Confidence



Hanson Construction Materials  
Hanson - Brandy Hill Quarry  
Updated Blast Impact Assessment



Figure 3: Location of Sensitive Receptors (L01 (R09) & L02 (R10))

7 September 2018

Commercial-In-Confidence



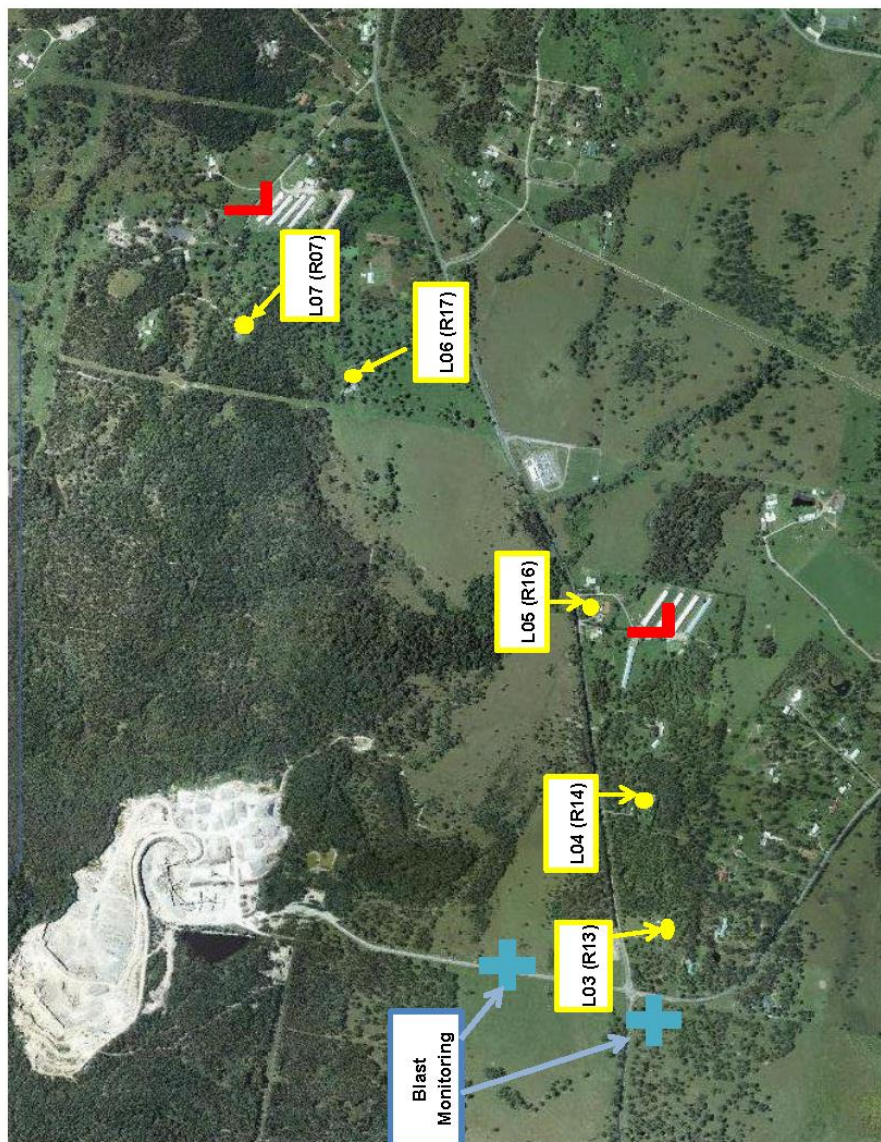


Figure 4: Location of Sensitive Receptors (L03 (R13), L04 (R14), L05 (R16), L06 (R17) & L07 (R07)) & Blast Monitoring Locations

7 September 2018

29N-14-0060-TRP-517408-6

Page 10 of 14

Commercial-In-Confidence



Hanson Construction Materials  
Hanson - Brandy Hill Quarry  
Updated Blast Impact Assessment

### 3 HISTORICAL BLAST IMPACT MEASUREMENTS

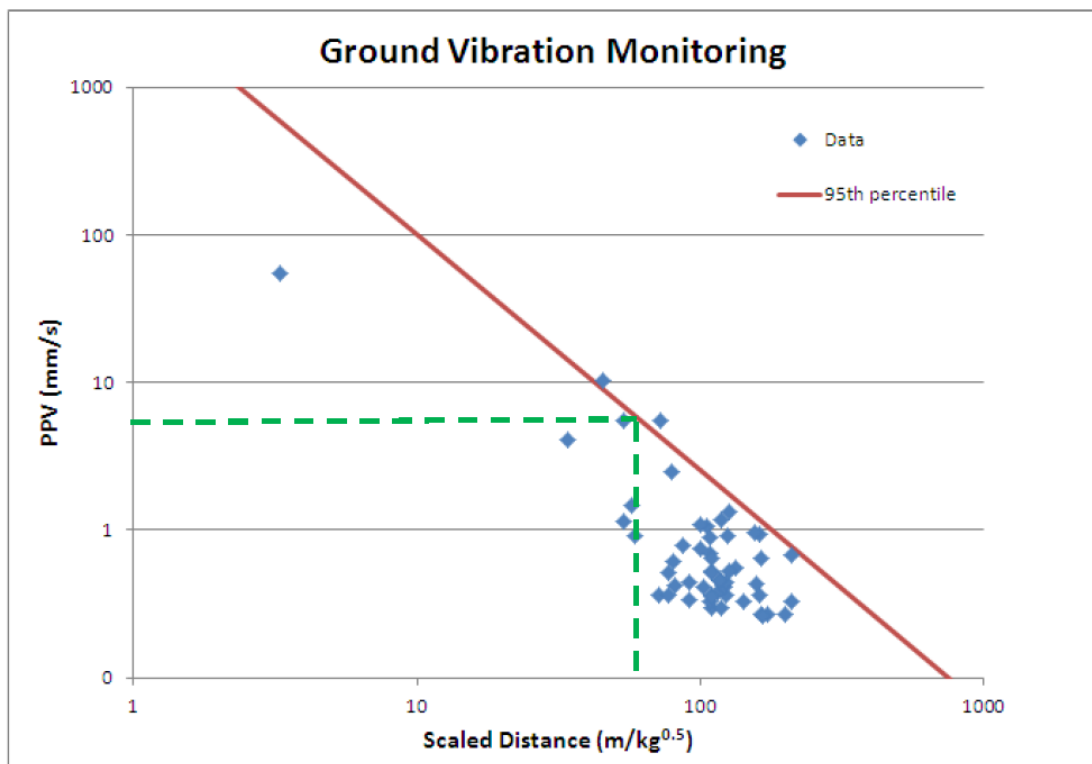
Blast impacts from the quarry have been measured by an independent specialist monitoring company for several years, as shown in **Figure 4**. Data from the blasts has been reported and provided to Vipac for analysis. The records show that compliance with the Environmental Conditions has been achieved.

**Figure 5** shows a graph of the measured ground vibration (Peak Particle Velocity, PPV in mm/s) versus the scaled distance from the blast. Most measurements were taken at locations representative of the nearest receivers (between 1000m to 1500m) with some at nearer control points (between 500m to 600m). It is noted that the high PPV event (at 55 mm/s) was a test charge measured at a close distance of 36m. The 95<sup>th</sup> percentile relationship for the data is also shown in the figure. It corresponds to parameter values of K=4000 and n=1.6 for the standard ground vibration propagation equation (see AS2187.2) shown below:

$$PPV = K \left( \frac{Dist}{\sqrt{Wt}} \right)^{-n}$$

where *PPV* is the peak particle vibration level (vector sum, measured in mm/s),  
*Dist* is the distance between the monitoring point and the nearest blasthole and  
*Wt* is the maximum weight of explosive per blasthole (kg).

The data indicates that ground vibration will be less than 5mm/s at 860m for 95% of blasts when the MIC (Mass Instantaneous Charge) of the blast is less than 175kg (see dotted line in **Figure 5**).



**Figure 5: Vibration vs scaled distance for data collected during Brandy Hill blasts**

7 September 2018



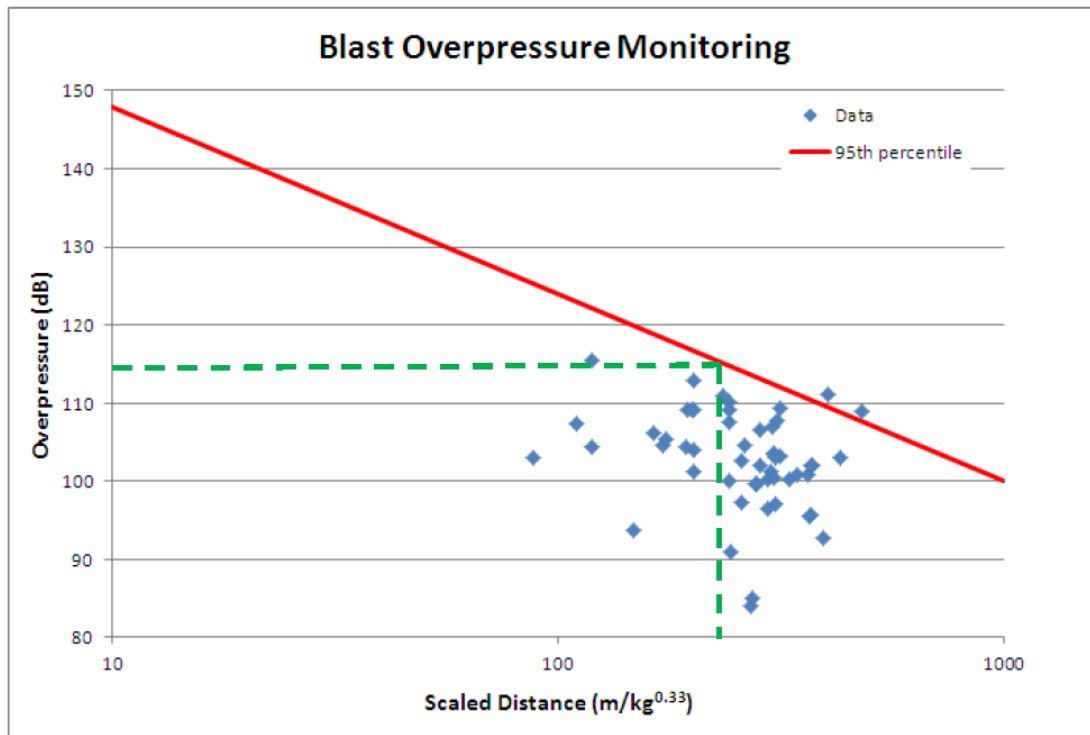
Hanson Construction Materials  
Hanson - Brandy Hill Quarry  
Updated Blast Impact Assessment

**Figure 6** shows a graph of the measured airblast overpressure (in  $\text{dB}_{\text{linear}}$ ) versus the relevant scaled distance (cubed root weighting) from the blast. The 95<sup>th</sup> percentile relationship for the data is also shown in the figure. It corresponds to parameter values of  $\text{dBL} = \log K_s = 172$  and  $\beta = \log a = 24$  for the standard airblast overpressure propagation equation (see AS2187.2) shown below:

$$\text{Op}_{\text{dBL}} = \text{dBL} - \beta \times \text{Log} \left( \frac{\text{Dist}}{\sqrt[3]{Wt}} \right)$$

Typically, overpressure regression analysis provides poor predictability, primarily due to the many other factors which affect the peak measured levels, the most important of which include delay timing, direction of pattern initiation, topographical barriers, and direction of receiver relative to the free face. Considering that the blast face will be directed opposite to the nearest receivers, the parameter  $\text{dBL}$  has been modified to determine the acceptable MIC for airblast.

The data indicates that airblast overpressure will be less than 115dBL at 860m behind the blast face for 95% of blasts when the MIC of the blast is less than 175kg (see dotted line in **Figure 6**).



**Figure 6: Overpressure vs scaled distance for data collected during Brandy Hill blasts**

Predictions of ground vibration and airblast overpressure at receiver locations are provided in **Table 2**.

7 September 2018

29N-14-0060-TRP-517408-6

Page 12 of 14

Commercial-In-Confidence



Hanson Construction Materials  
Hanson - Brandy Hill Quarry  
Updated Blast Impact Assessment

**Table 2: 95% Percentile Predictions at Receivers for MIC of 145 kg (expected) and 175 kg (limit)**

Property ID	Distance approx. (m)	PPV (mm/s)	Overpressure (dB)	PPV (mm/s)	Overpressure (dB)
		Expected maximum MIC of 145kg		MIC limit of 175 kg	
L01 (R09)	1,110	2.9	110	3.3	111
L02 (R10)	950	3.7	112	4.3	113
L03 (R13)	960	3.6	112	4.2	113
L04 (R14)	860	4.3	113	5.0	114
L05 (R16)	980	3.5	112	4.1	112
L06 (R17)	1,160	2.7	110	3.1	110
L07 (R07)	1,310	2.2	109	2.6	109
Nearest livestock	1,100	2.9	110	3.3	111

The predictions of ground vibration and airblast overpressure at receiver locations are more conservative than the measurement based data. It shows an MIC limit of 175kg in order to meet the vibration and overpressure criteria at the nearest receiver.

## 4 CRITERIA

### 4.1 EPA CONDITIONS

The Environmental Protection Licence conditions for the quarry specify limit conditions for blasting (Environmental Protection Licence EPL 1879). The maximum overpressure level and maximum ground vibration peak particle velocity level are defined and are identical with the ANZEC guidelines (see Section 4.2).

The conditions also require that all blasts be monitored at or near the nearest residence or noise sensitive location that is likely to be most affected by the blast.

### 4.2 ANZECC

The Australian and New Zealand Environment Council (ANZEC) provides the following guidelines to minimise the annoyance due to blasting overpressure and ground vibration.

- The recommended maximum level for airblast overpressure is 115 dBL. This level may be exceeded on up to 5% of the total number of blasts over a period of 12 months. However, the level should not exceed 120 dBL at any time.
- The recommended maximum level for ground vibration is 5 mm/s peak particle velocity. This level may be exceeded on up to 5% of the total number of blasts over a period of 12 months. However, the level should not exceed 10 mm/s peak particle velocity at any time.

### 4.3 AS2187.2

Appendix J of AS2187.2 provides information on ground vibration and airblast overpressure from blasting. Guidance is provided for the measurement, prediction and control of blast impacts. The importance of blast management and blast monitoring records in minimising blast impacts is stated.

### 4.4 LIVESTOCK

Noise and vibration criteria for poultry livestock are not available. Studies have shown adverse effects at levels greater than human criteria, i.e. 115dB and 5 mm/s. The maximum predictions for poultry livestock



Hanson Construction Materials  
Hanson - Brandy Hill Quarry  
Updated Blast Impact Assessment

infrastructure are less than these values (see Table 2). Therefore, it is predicted that quarry blasts will not adversely affect livestock or the livestock infrastructure.

## 5 BLASTING DETAILS

The assumed blast design parameters pertinent to the anticipated future vibration and overpressure impacts are:

- bench height = 10 to 15 m, sub-drill 0.5 m;
- blasthole diameter = 89 to 102 mm;
- explosive type = Rioflex (1.2 -1.3 density g/cc in hole);
- stemming length 3 to 3.5 metres.

Based on the information above, blasts will typically contain up to 145 kg of explosive per blasthole. The range is 55 to 145 kg. The maximum instantaneous charge (MIC) should therefore be kept below the required limit of 175 kg from Section 3.

## 6 BLAST IMPACT ASSESSMENT

Blast impacts from the proposed quarry extension can readily be controlled within acceptable values using existing blast practices. This is because the minimum separation distance between the quarry pit and the nearest receiver is sufficient for adequate control of the propagation of ground vibration and airblast overpressure. Analysis of historical data shows that compliance with the environmental conditions has been achieved. Consideration of future blast impacts shows that the acceptable levels can be achieved using typical blast designs and good blasting practice.

It is predicted that livestock will experience acceptable vibration and airblast overpressure levels.

It is recommended that all blasting conducted for the Project is monitored using best practices and with monitors located as close as practical (between the blast and the receiver) to the sensitive receivers nominated for blast monitoring. Appropriate attention must also be directed to those receivers located forward of the free face which may experience peak overpressure levels higher than those measured at the nearest receiver located behind the free face. Where a roving monitor is used in response to community concerns, geophones must be well coupled to firm ground, or bonded to solid rock outcrops. A Blast Management Plan (BMP) should be implemented to ensure compliance with the EPA EPL Conditions. The BMP should state that blasting operations should align with the ANZEC Guidelines and should not occur outside the hours of 9am to 5pm (Monday to Saturday). It is recommended that the BMP include current vibration and overpressure data in the design of blasts, which is a vital step in managing impacts in sensitive areas.

7 September 2018

29N-14-0060-TRP-517408-6

Page 14 of 14

Commercial-In-Confidence