

7 June 2019

RPAC St Catherine's School S4.55 Access Report

Methodology

This Access Australia (AA) Report relates to instructions and documents received to date from Sandrick and Mayoh Architects (Mayoh) regarding amended Phase A S4.55 RPAC (Research, Performing Arts & Aquatic Centre) program at St Catherine's School, 26 Albion St Waverley.

This Report should be read in conjunction with previous AA Access Reports and recommendations for St Catherine's School.

AA reports and recommendations relate to the 2010 DDA Access to Premises Standard (APS) as amended, current BCA and applicable local authority access requirements. The intent of the APS is to harmonise BCA access provisions with the complaints based DDA.

Access provisions are to comply with relevant Australian Standards, including current AS1428.1 - 2009, AS1428.2 - 1992, AS1428.4 - 2009, AS1735.12 - 1999, AS2890.6 - 2007 and Waverley Council (WC) access requirements as applicable.

DDA complaints can be lodged in relation to existing and or proposed buildings and services. Accordingly, AA provides a risk management approach, and recommends access modifications / retrofit to existing premises in conjunction with accessible new works and services.

AA directors are members of the ACAA (Association of Consultants in Access Australia).

Scope

This S4.55 Access Report provides a review of access related changes in relation to the amended Phase A program.

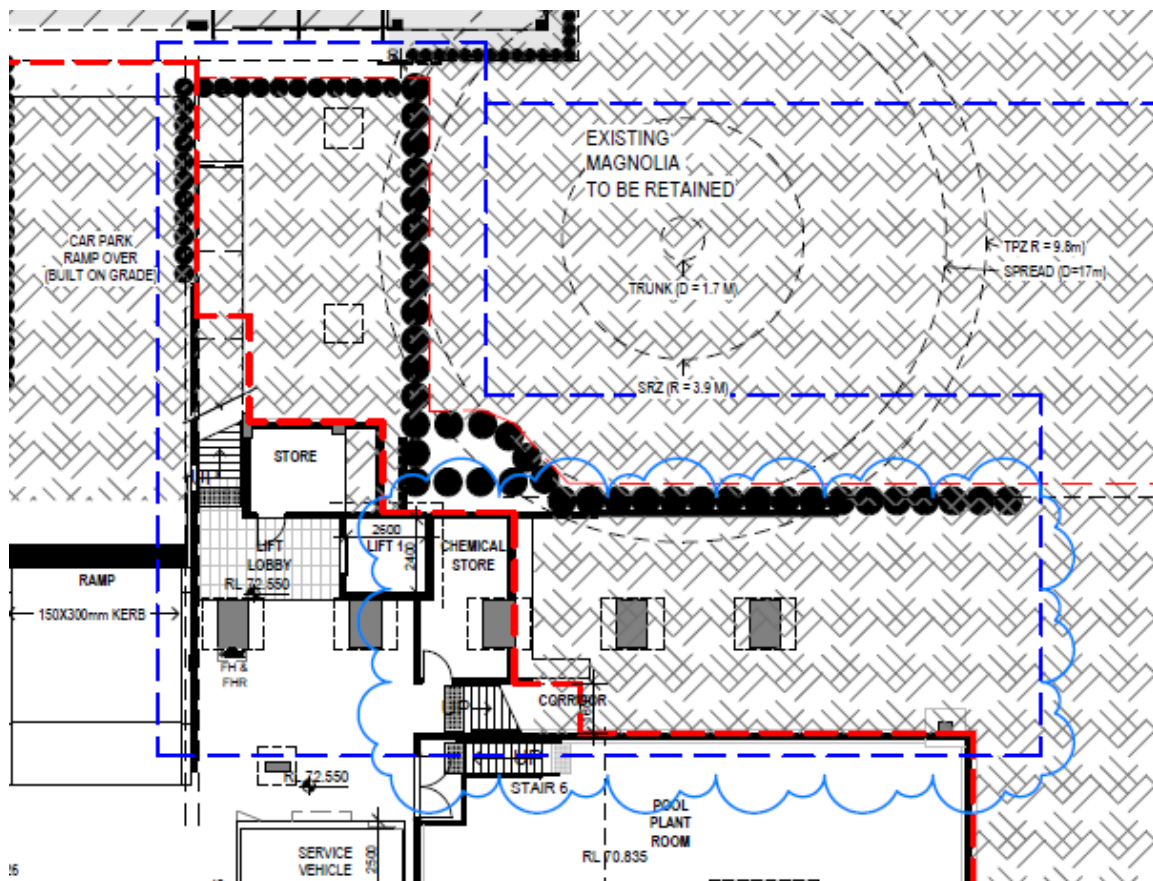
AA requirements and best practice recommendations are provided. Documents provided include plans and details received to date.

AA scope includes access reviews and reports at design development, CC and detailed design stages – and access advice and site inspections to completion.

Access assessment

Level 1 4.44 (1A) 100 A

Modified site works adjacent to NW Lift 1 lobby and parking entry.



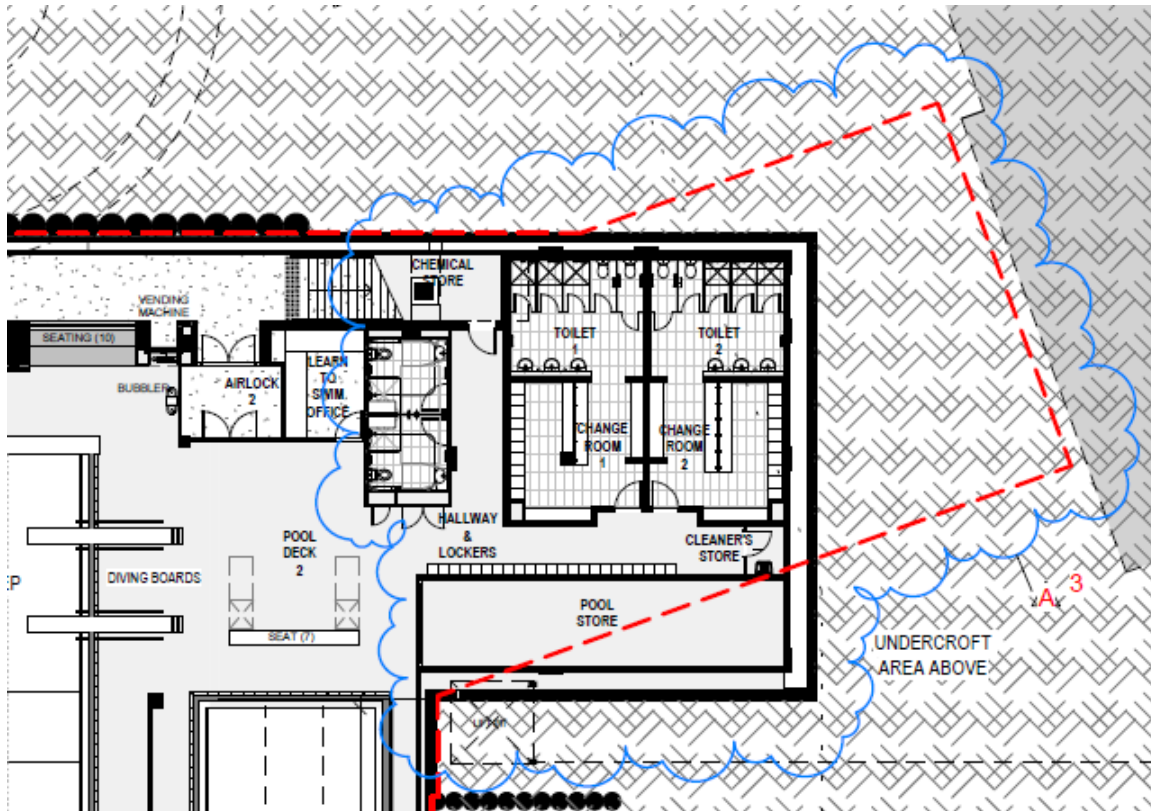
Level 1 modified NW site works

Level 1	Access criteria APS, BCA & Standards
Path of travel (POT) Entries, signage & doors	Provide accessible POTs between carpark and main entrances, consistent signage, and minimum 850 doors with complying nibs and circulation
Stairs, ramps, bollards	Stairs, ramps and walkways to comply with AS1428.1-2009. Provide complying kerb ramps and bollards with minimum 30% luminance contrast between bollards and background Automatic entry doors to include continuous decals 75mm± and 900 to 1000mm high with minimum 30% luminance contrast between decals and background
Accessible parking	Provide accessible parking complying with the BCA and AS2890.6-2009 including minimum 2.4m wide accessible parking spaces with adjacent 2.4m wide shared spaces Provide maximum 1:40 cross fall, minimum 2.2m driveway height, minimum 2.5m parking space height. Install ISA (International Symbol of Access) ground and vertical signage and accessible POT
Signage	Install consistent and accessible identifying signage to each parking level with minimum 30% luminance contrast between signage and background
Passenger lifts	Passenger lifts to provide complying circulation space, minimum 900 wide door and 1400 x 1600 car size, Braille & tactile controls 990 to 1200 high, handrails and audio announcements

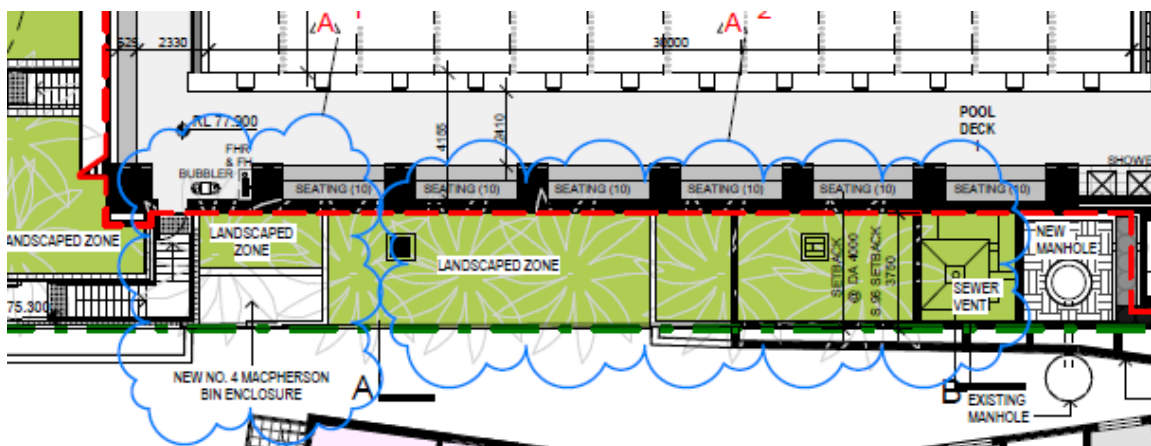
Level 2 4.44 (1A) 101 A

Reoriented amenities at NW pool deck, including accessible unisex toilets and PAD cubicles (to assist persons with ambulant disabilities).

Modified Macpherson St east frontage landscaping.



Level 2 modified amenities



Level 2 Macpherson St east frontage

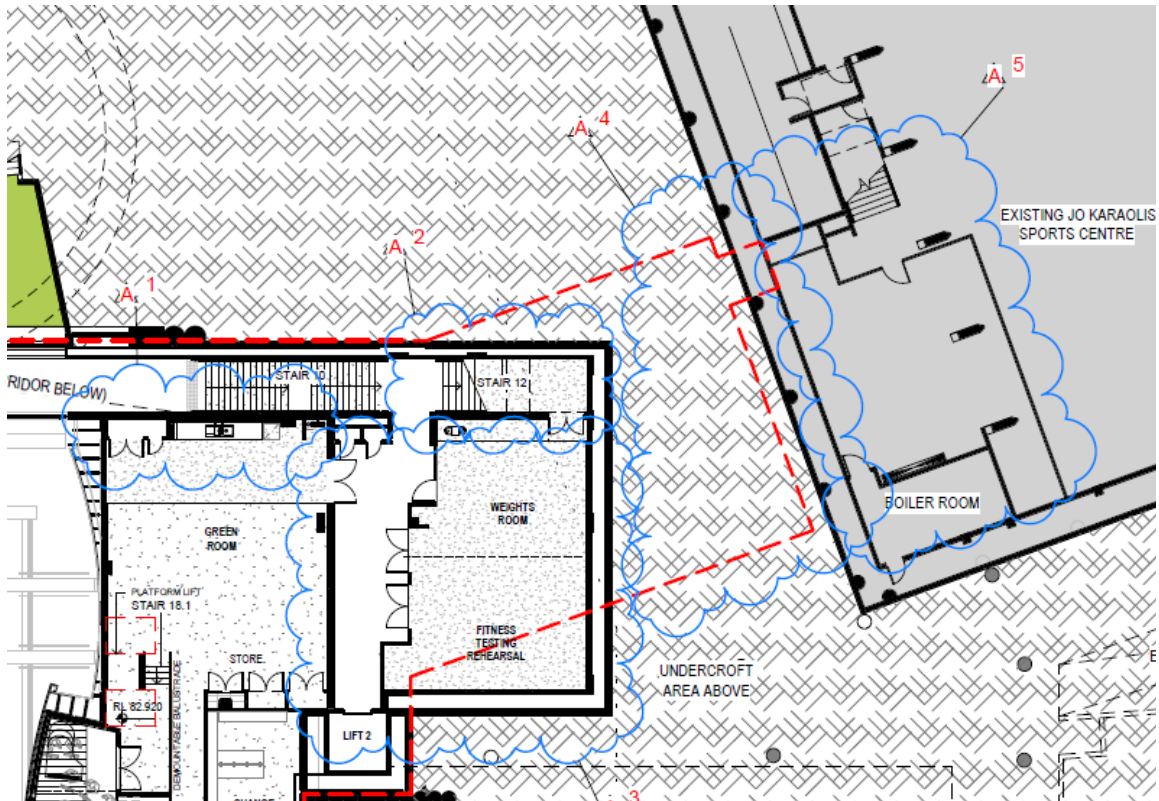
Level 2	Access criteria APS, BCA & Standards
Path of travel (POT) Entries, signage & doors Stairs, ramps, bollards, passenger lifts & signage	Comply with Level 1 access criteria
Seating	<i>Recommendation – provide minimum 20% seating with backs and armrests, and adjacent wheelchair seating spaces</i>
Ramps, stairs & signage	Comply with Level 1 access criteria
Amenities	Provide complying unisex accessible toilets and showers Install PAD cubicles in gender specific toilets (to assist persons with ambulant disabilities)
Counters	<i>Recommendation – provide minimum 1m wide accessible counter section 850 ±20 high</i>
Pool access	Provide complying accessible water entry / exit for swimming pools

Level 3 4.44 (1A) 102 A

Modified north fitness areas.

Relocated stair 12 link to Sports Centre.

Level 3	Access criteria APS, BCA & Standards
Path of travel (POT) Entries, signage & doors Stairs, ramps, bollards, passenger lifts & signage	Comply with Level 1 access criteria
Amenities	Comply with Level 2 access criteria



Level 3 modified NW fitness area and site works

Level 4 4.44 (1A) 103 A

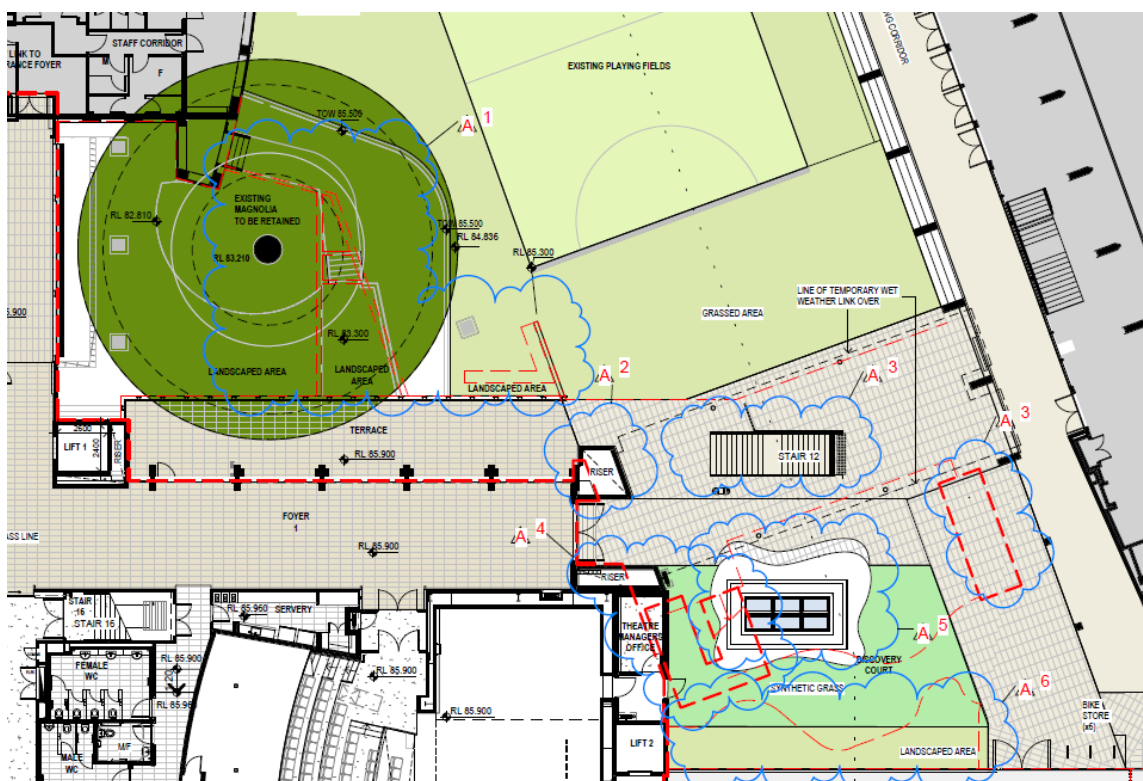
Modified paving and levels adjacent to courtyard magnolia tree to be retained.

Relocated stair 12 link to Sports Centre.

Discovery court with synthetic grass.

Modified landscaped areas.

Pair of doors x 2 to auditorium lower east and west entries.



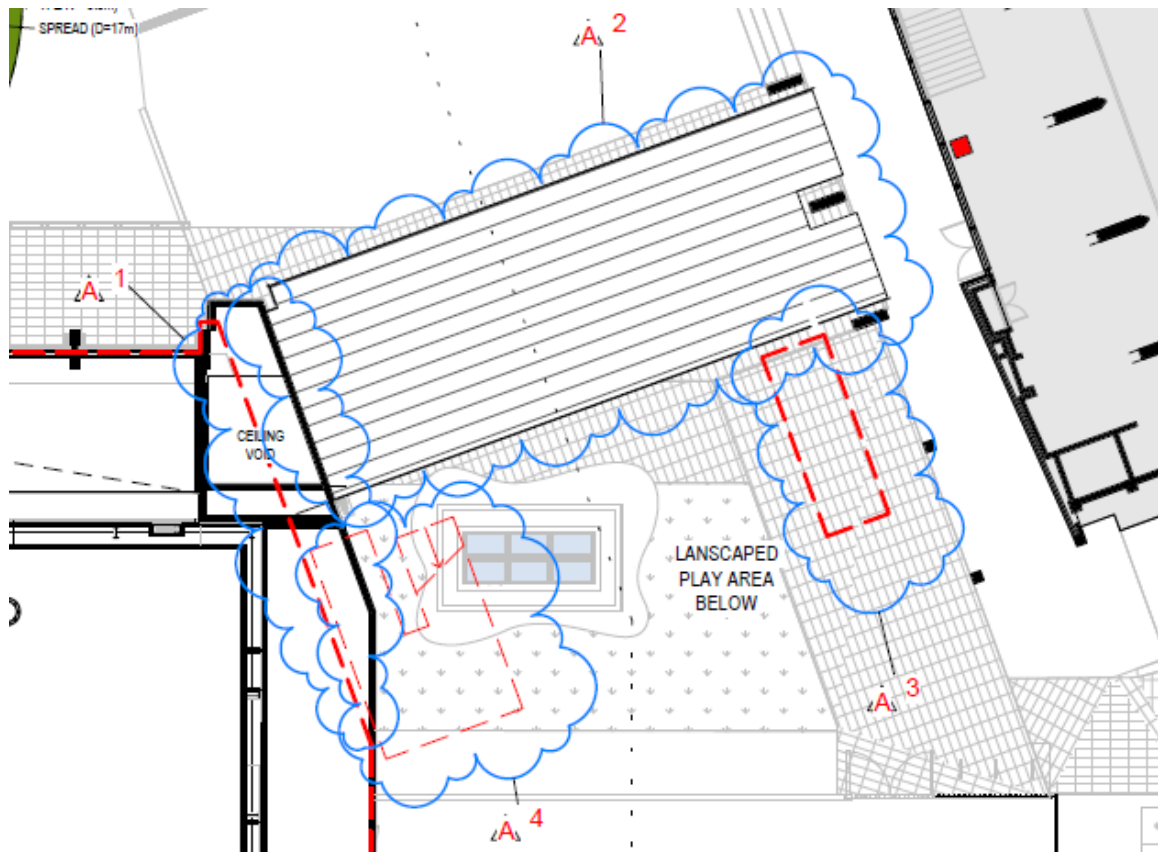
Level 4 modified site works and Sports Centre access

Level 4	Access criteria APS, BCA & Standards
Path of travel (POT) Entries, signage & doors Stairs, ramps, bollards, passenger lifts & signage	Comply with Level 1 access criteria Provide level junctions between new and existing paving
Amenities	Comply with Level 2 access criteria
Auditorium	Provide complying wheelchair seating spaces with adjacent companion seats, and equitable access to the stage
Counters	Comply with Level 2 access criteria
Platform lift	Provide complying circulation space, minimum 900 wide door, 1100 x 1400 car size, Braille & tactile momentary pressure controls 990 to 1200 high, handrails and usable without a key during normal school operation hours

Level 5 4.44 (1A) 104 A

Modified roof over new link to Sports Centre.

Modified landscaped areas.



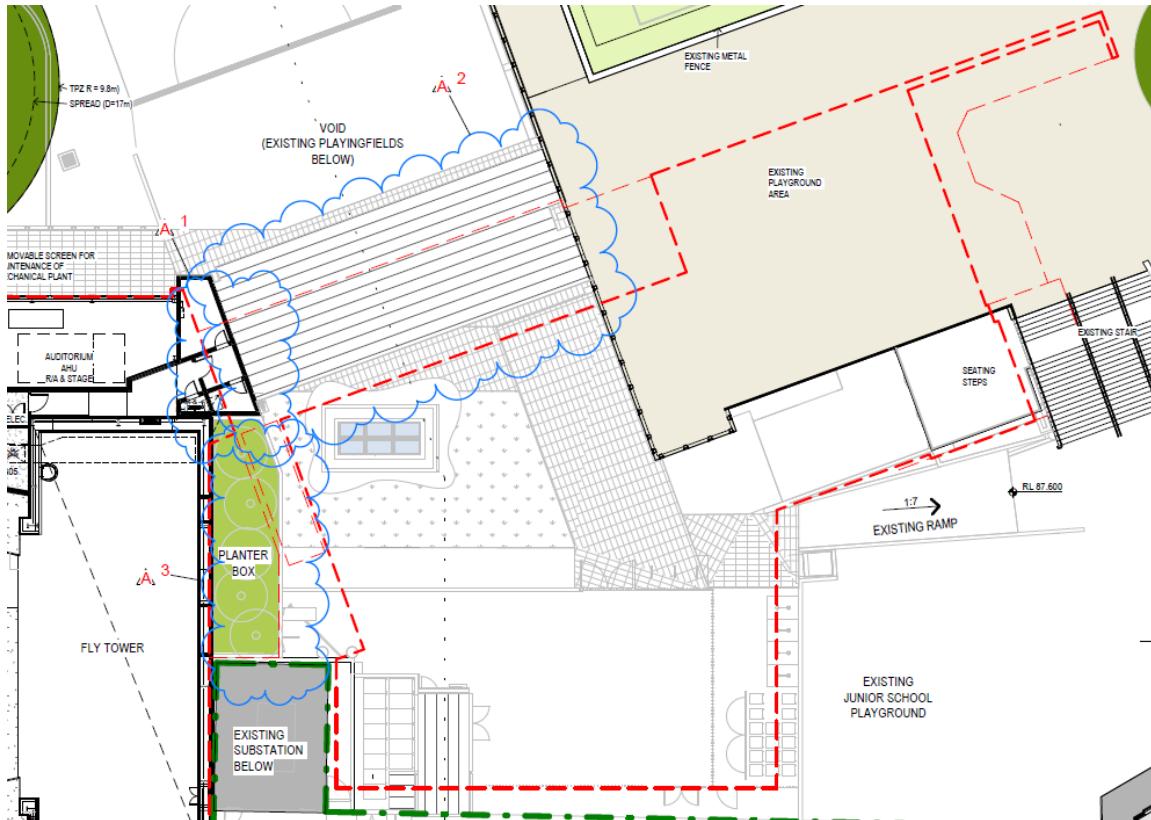
Level 5 Modified NW roof and landscaped areas

Level 5	Access criteria APS, BCA & Standards
Path of travel (POT) Entries, signage & doors Stairs, ramps, bollards, passenger lifts & signage	Comply with Level 1 access criteria
Kitchenette	Comply with Level 2 access criteria
Platform lift	Comply with Level 4 access criteria

Level 6 4.44 (1A) 105 A

Library excluded from Phase A.

New NW roof and landscaped areas above Sports Centre link.

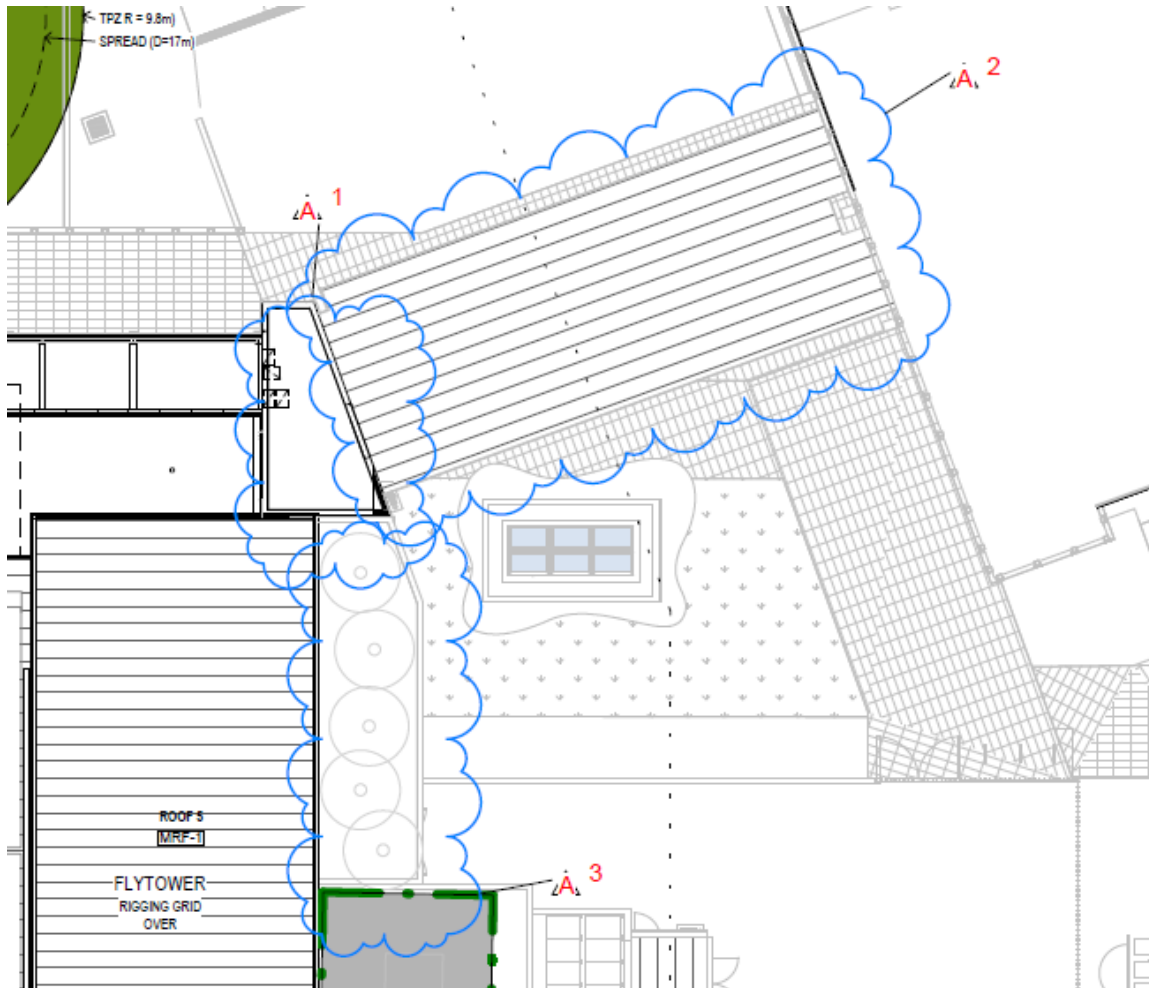


Level 6 Modified NW roof and landscaped areas

Level 6	Access criteria APS, BCA & Standards
Path of travel (POT) Entries, signage & doors Stairs, ramps, bollards, passenger lifts & signage	Comply with Level 1 access criteria
Auditorium	Comply with Level 4 access criteria
Amenities	Comply with Level 2 access criteria

Level 7 4.44 (1A) 106 A

New NW roof and landscaped areas above Sports Centre link.



Level 7 Modified NW roof and landscaped areas

Access Compliance

Subject to compliance with the recommendations in this AA report, the RPAC Phase A building design provides access and facilities for people with a disability in accordance with the current BCA and applicable access standards.

AA Access Reports provide assessments and recommendations during design, documentation and construction, regarding access to and within the built environment.

Access compliance requires access inspections during construction, to review, assess and report on access compliance or non-compliance. Access Certification and sign-off can be provided on satisfactory resolution and completion of all access related issues.

Access Australia

Michael Fox AM B Arch MTCP ACAA
Director
