

DRAWING LIST

GENERAL	
10676_DA-000	COVER SHEET
FLOOR PLANS	
10676_DA-010	LOCATION PLAN/ SITE PLAN
10676_DA-011	LOWER GROUND FLOOR PLAN
10676_DA-012	UPPER GROUND FLOOR PLAN
10676_DA-015	ROOF PLAN
ELEVATIONS	
10676_DA-020	SITE ELEVATIONS
10676_DA-021	ELEVATIONS - SHEET 1
10676_DA-022	ELEVATIONS - SHEET 2
10676_DA-023	ELEVATIONS - SHEET 3
10676_DA-024	ELEVATIONS - SHEET 4
10676_DA-025	ELEVATIONS - SHEET 5
10676_DA-026	ELEVATIONS - SHEET 6
10676_DA-027	ELEVATIONS - SHEET 7
10676_DA-028	ELEVATIONS - SHEET 8
SECTIONS	
10676_DA-031	SECTIONS
PERSPECTIVES	
10676_DA-050	PERSPECTIVES





01 LOCATION PLAN
NOT TO SCALE



02 SITE PLAN
1:750

ISSUE FOR S4.55

Client



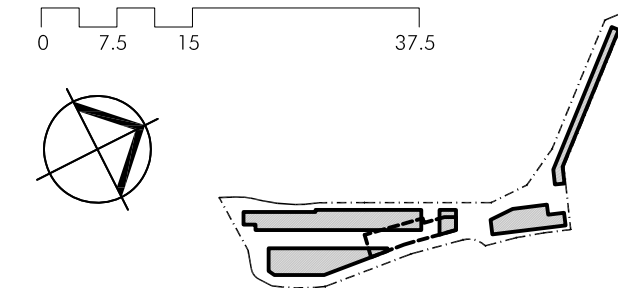
Issue	Description	Date
A	DRAFT ISSUE FOR REVIEW	01.31.18
B	ISSUE FOR DA	05.02.18
C	ISSUE FOR DA	09.02.18
D	AMENDED DA - LANDSCAPE SHOWN	10.04.18
E	AMENDED DA - LANDSCAPE SHOWN	09.05.18
F	DRAFT - REVISED FOR PLANNING MODIFICATION	01.03.19
G	REVISED FOR PLANNING MODIFICATION	06.03.19
H	DRAFT FOR ISSUE FOR S4.55	17.05.19
I	ISSUE FOR S4.55	28.05.19
K	ISSUE FOR S4.55	05.06.19

Builder and/or subcontractors shall verify all project dimensions before commencing onsite work or off-site fabrication. Figure dimensions shall take precedence over scaled dimensions. This drawing is copyright and cannot be reproduced in whole or in part or by any medium without the written permission of Nettleton Tribe Partnership Pty Ltd.

Builder

Project Name
Bluestone Industrial Estate
Project Address
Lot 37 Prospect Highway, Greystanes NSW

Key Plan



Drawing Title:

Location Plan/ Site Plan
Floor Plan

Author: JJ

SKL

Drawing Number:
10676_DA-010

Scale:

1:750 @ A1

1:1500 @ A3

Issue:

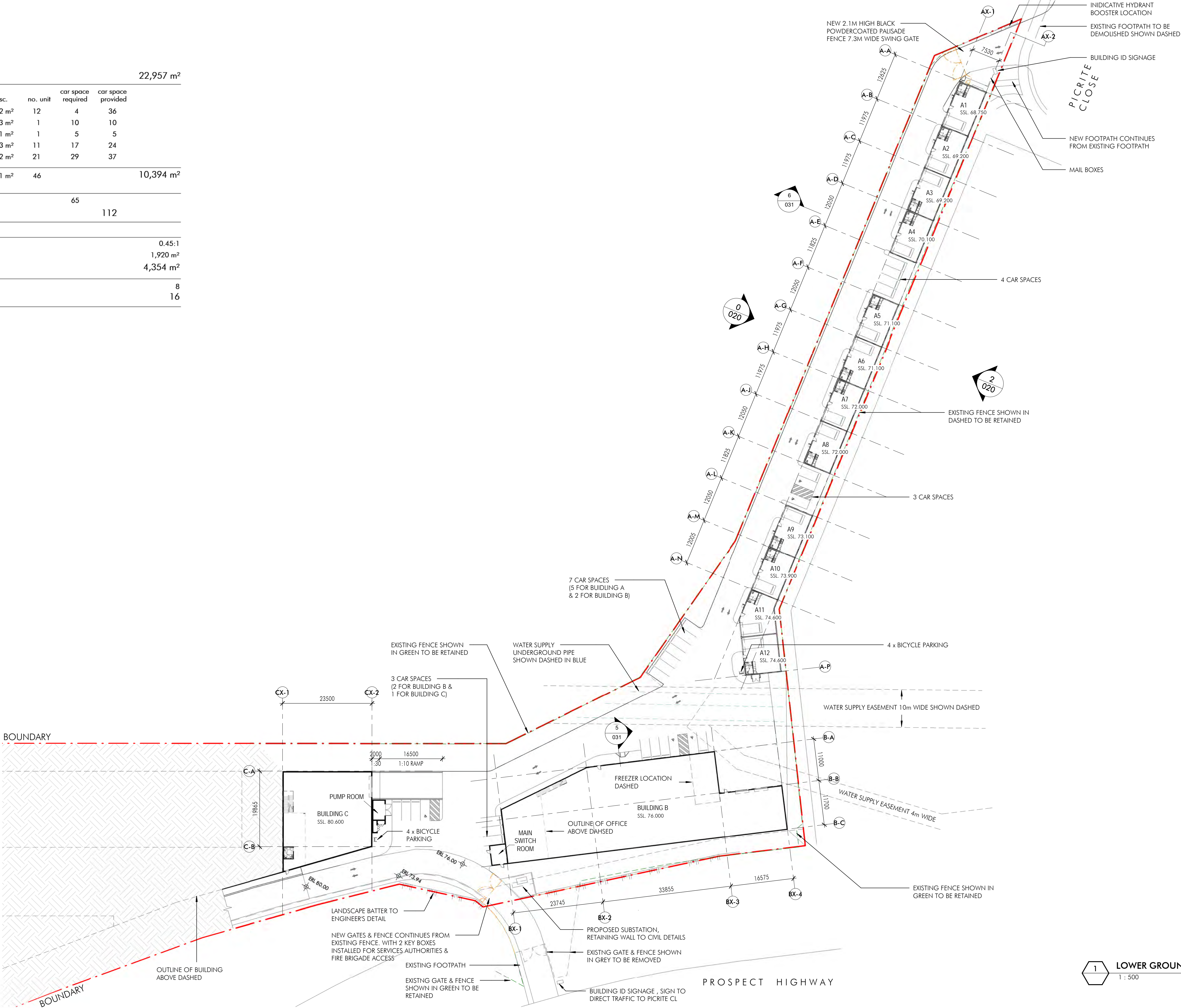
K

nettletontribe

nettleton tribe partnership pty ltd ABN 58 161 683 122
117 Willoughby Road, Crows Nest, NSW 2065
t +61 2 9431 6131
e: sydney@nettletontribe.com.au w: nettletontribe.com.au

area schedule

landtake area						22,957 m²
GBA	warehouse	office	misc.	no. unit	car space required	car space provided
Building A	1,100 m²	-	2 m²	12	4	36
Building B	1,404 m²	166 m²	23 m²	1	10	10
Building C	546 m²	80 m²	31 m²	1	5	5
Building D	2,379 m²	345 m²	3 m²	11	17	24
Building E	3,683 m²	630 m²	2 m²	21	29	37
total GBA	9,112 m²	1,221 m²	61 m²	46	10,394 m²	
car parking required:					65	
car parking provided						112
fsr					0.45:1	
landscape conservation area					1,920 m²	
Total landscape area					4,354 m²	
bicycle parking required:					8	
bicycle parking provided					16	



ISSUE FOR S4.55

Client



Issue	Description	Date
A	DRAFT ISSUE FOR REVIEW	31.01.18
B	ISSUE FOR DA	05.02.18
C	ISSUE FOR DA	09.02.18
D	AMENDED DA	10.04.18
E	AMENDED DA	09.05.18
F	AMENDED DA	25.05.18
G	DRAFT - REVISED FOR PLANNING MODIFICATION	01.03.19
H	DRAFT 80% - ISSUE FOR S4.55	17.05.19
J	ISSUE FOR S4.55	20.05.19
K	ISSUE FOR S4.55	05.06.19

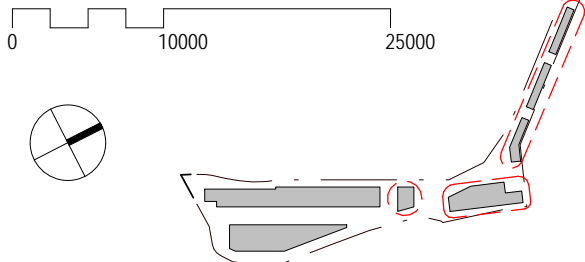
Builder and/or subcontractors shall verify all project dimensions before commencing on-site work or off-site fabrication. Figured dimensions shall take precedence over scaled dimensions. This drawing is copyright and cannot be reproduced in whole or in part or by any medium without the written permission of Nettleton Tribe Partnership Pty Ltd.

Builder



Project Name
Bluestone Industrial Estate
Project Address
20 Picrite Close, Pemulwuy NSW 2145

Key Plan



Drawing Title:
Lower Ground Floor Plan

Author: JJ	Checker: SKL	Sheet Size: A1	Scale: 1:500
Drawing Number: 10676_011			Issue: K



nettleton tribe partnership pty ltd ABN 58 161 683 122
117 Willoughby Road, Crows Nest, NSW 2065
t +61 2 9431 6431
e: sydney@nettletontribe.com.au w: nettletontribe.com.au



Builder and/or subcontractors shall verify all project dimensions before commencing on-site work or off-site fabrication. Figured dimensions shall take precedence over scaled dimensions. This drawing is copyright and cannot be reproduced in whole or in part or by any medium without the written permission of Nettleton Tribe Partnership Pty Ltd.



Author: JJ Checker: SKL Sheet Size: A1

Drawing Number:
10676 012

Scale:
1:500

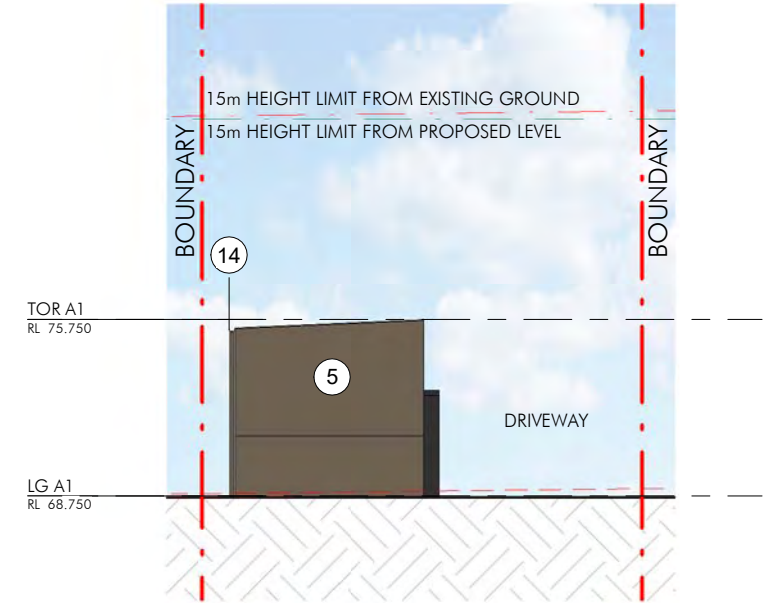
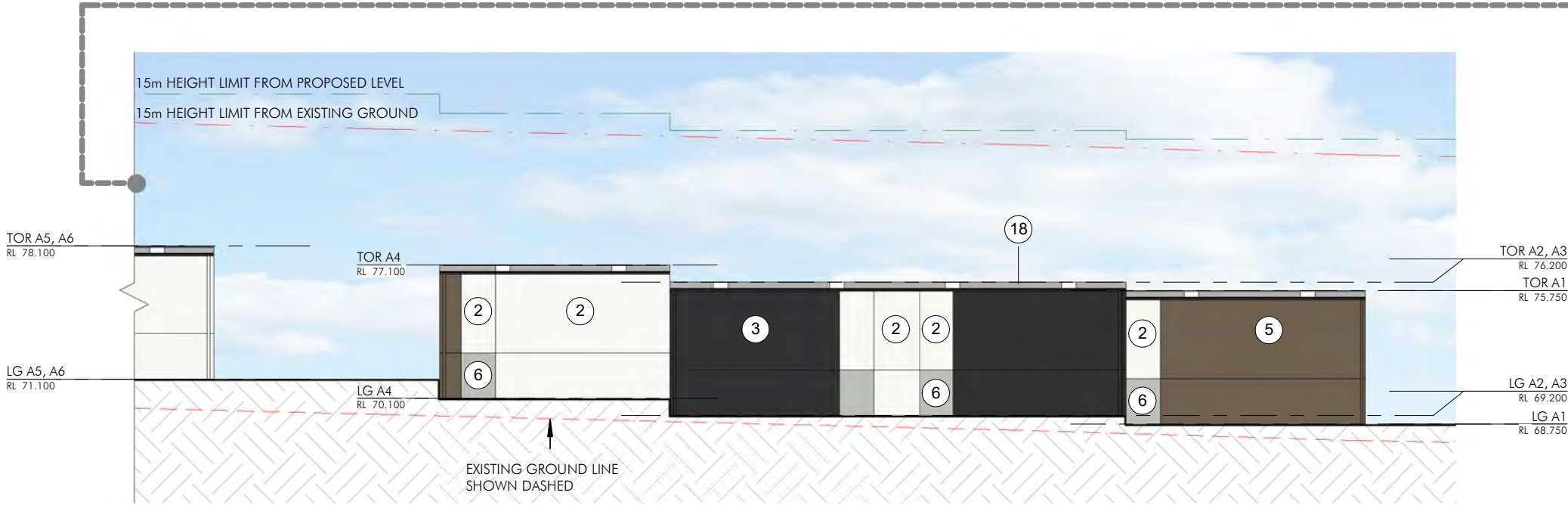
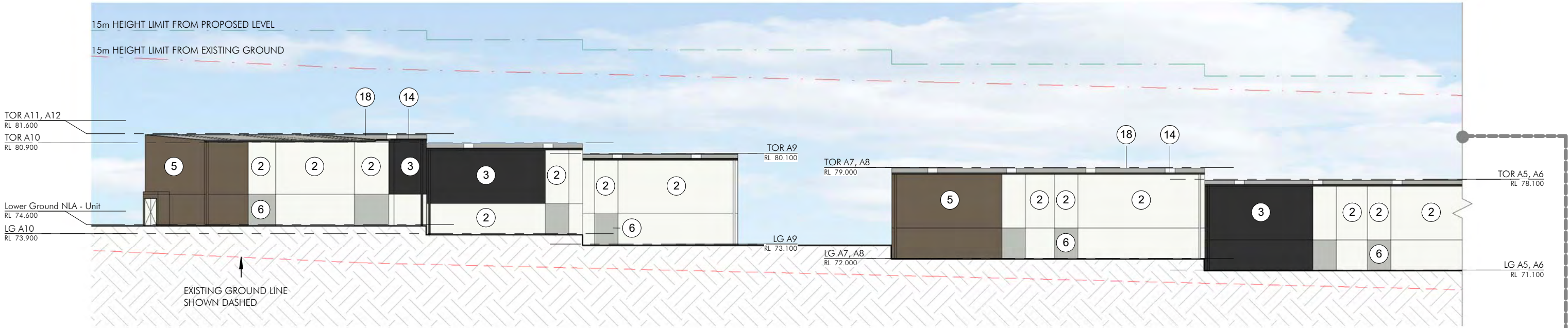
Issue:
K

nettleton tribe partnership Pty Ltd ABN 58 161 683 122
117 Willoughby Road, Crows Nest, NSW 2065
t +61 2 9431 6431
e: sydney@nettletontribe.com.au w: nettletontribe.com.au





nettleton tribe partnership Pty Ltd ABN 58 161 683 122
117 Willoughby Road, Crows Nest, NSW 2065
t +61 2 9431 6431
e: sydney@nettletontribe.com.au w: nettletontribe.com.au



1 BUILDING A EAST ELEVATION
1 : 300

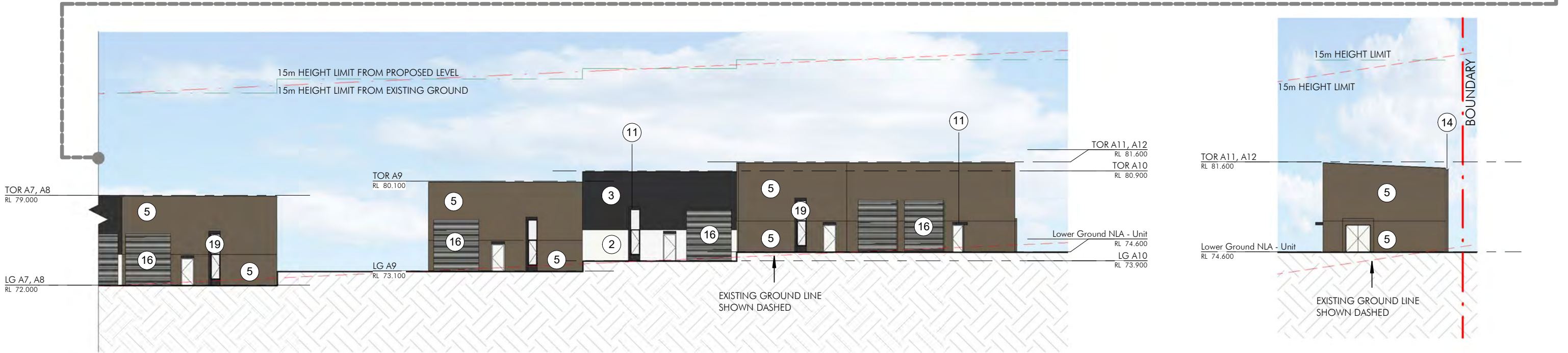
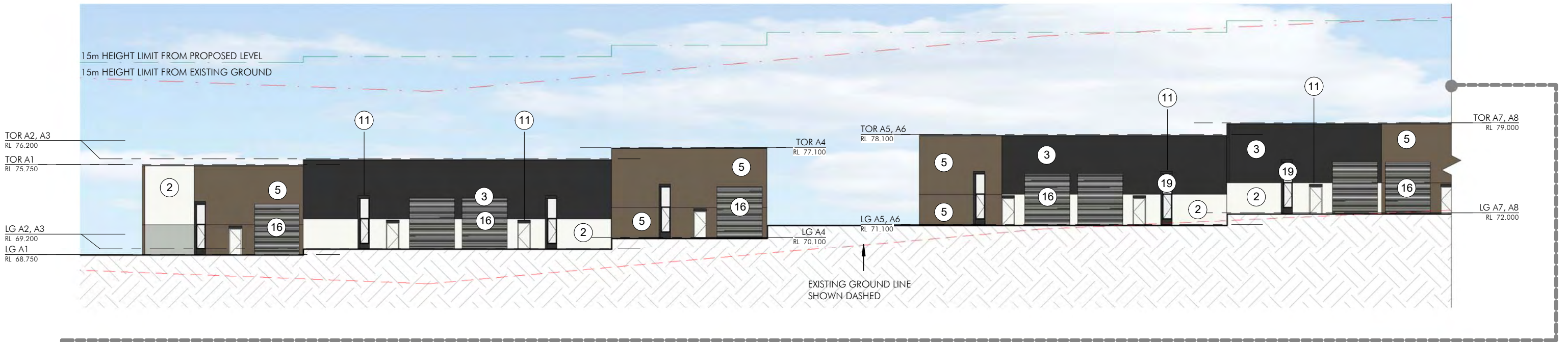
2 BUILDING A NORTH ELEVATION
1 : 300

FINISHES LEGEND

- | | | | |
|--|--|--|--|
| 1 PROFILED PRECAST PANEL | 6 PAINTED PRECAST PANEL - COLORBOND "SHALE GREY" | 11 POWDERCOATED ALUMINIUM DOOR FRAME & AWNING - COLORBOND "MONUMENT" | 16 ROLLER SHUTTER DOOR - COLORBOND "SHALE GREY" |
| 2 PAINTED PRECAST PANEL - DULUX "VIVID WHITE" | 7 PAINTED PRECAST PANEL - COLORBOND "GULLY" | 12 POWDERCOATED ROOF ACCESSORIES - COLORBOND "BASALT" | 17 POWDERCOATED ALUMINIUM LOUVRES - COLORBOND "BASALT" |
| 3 PAINTED PRECAST PANEL - COLORBOND "MONUMENT" | 8 POWDERCOATED ALUMINIUM WINDOW FRAME - WHITE | 13 POWDERCOATED ROOF ACCESSORIES - COLORBOND "JASPER" | 18 TRIMDEK ROOF SHEETING - COLORBOND "SHALE GREY" |
| 4 PAINTED PRECAST PANEL - COLORBOND "BASALT" | 9 POWDERCOATED ALUMINIUM WINDOW FRAME - COLORBOND "MONUMENT" | 14 POWDERCOATED ROOF ACCESSORIES - COLORBOND "MONUMENT" | 19 VISION GLAZING - CLEAR |
| 5 PAINTED PRECAST PANEL - COLORBOND "JASPER" | 10 POWDERCOATED ALUMINIUM DOOR FRAME & AWNING - WHITE | 15 PAINTED / POWDERCOATED COLUMNS - COLORBOND "JASPER" | |

ISSUE FOR S4.55

Client 	<table><thead><tr><th>Issue</th><th>Description</th><th>Date</th></tr></thead><tbody><tr><td>A</td><td>DRAFT ISSUE FOR REVIEW</td><td>31.01.18</td></tr><tr><td>B</td><td>ISSUE FOR DA</td><td>05.02.18</td></tr><tr><td>C</td><td>AMENDED DA</td><td>10.04.18</td></tr><tr><td>D</td><td>DRAFT - ISSUE FOR PLANNING MODIFICATION</td><td>01.03.19</td></tr><tr><td>E</td><td>DRAFT - ISSUE FOR PLANNING MODIFICATION</td><td>15.05.19</td></tr><tr><td>F</td><td>ISSUE FOR S4.55</td><td>28.05.19</td></tr><tr><td>G</td><td>ISSUE FOR S4.55</td><td>05.06.19</td></tr></tbody></table> <p>Builder and/or subcontractors shall verify all project dimensions before commencing work on-site or off-site fabrication. Figured dimensions shall take precedence over scaled dimensions. This drawing is copyright and cannot be reproduced in whole or in part or by any medium without the written permission of Nettleton Tribe Partnership Pty Ltd</p>	Issue	Description	Date	A	DRAFT ISSUE FOR REVIEW	31.01.18	B	ISSUE FOR DA	05.02.18	C	AMENDED DA	10.04.18	D	DRAFT - ISSUE FOR PLANNING MODIFICATION	01.03.19	E	DRAFT - ISSUE FOR PLANNING MODIFICATION	15.05.19	F	ISSUE FOR S4.55	28.05.19	G	ISSUE FOR S4.55	05.06.19	Builder: 	Project Name Bluestone Industrial Estate Project Address 20 Picrite Close, Pemulwuy NSW 2145	Key Plan: 	Drawing Title: Elevations Sheet 1 Author: JJ Checker: SKL Drawing Number: 10676_021 Scale: 1 : 300 Level: G	nettletontribe nettleton tribe partnership pty ltd ABN 58 161 683 122 117 Willoughby Road, Crows Nest, NSW 2065 t +61 2 9431 6131 e: sydney@nettletontribe.com.au w: nettletontribe.com.au
Issue	Description	Date																												
A	DRAFT ISSUE FOR REVIEW	31.01.18																												
B	ISSUE FOR DA	05.02.18																												
C	AMENDED DA	10.04.18																												
D	DRAFT - ISSUE FOR PLANNING MODIFICATION	01.03.19																												
E	DRAFT - ISSUE FOR PLANNING MODIFICATION	15.05.19																												
F	ISSUE FOR S4.55	28.05.19																												
G	ISSUE FOR S4.55	05.06.19																												



1 BUILDING A WEST ELEVATION
1 : 300

2 BUILDING A SOUTH ELEVATION
1 : 300

FINISHES LEGEND

1

PROFILED PRECAST PANEL

2

PAINTED PRECAST PANEL - DULUX "VIVID WHITE"

3

PAINTED PRECAST PANEL - COLORBOND "MONUMENT"

4

PAINTED PRECAST PANEL - COLORBOND "BASALT"

5

PAINTED PRECAST PANEL - COLORBOND "JASPER"

6

PAINTED PRECAST PANEL - COLORBOND "SHALE GREY"

7

PAINTED PRECAST PANEL - COLORBOND "GULLY"

8

POWDERCOATED ALUMINIUM WINDOW FRAME - WHITE

9

POWDERCOATED ALUMINIUM WINDOW FRAME - COLORBOND "MONUMENT"

10

POWDERCOATED ALUMINIUM DOOR FRAME & AWNING - WHITE

11

POWDERCOATED ALUMINIUM DOOR FRAME & AWNING - COLORBOND "MONUMENT"

12

POWDERCOATED ROOF ACCESSORIES - COLORBOND "BASALT"

13

POWDERCOATED ROOF ACCESSORIES - COLORBOND "JASPER"

14

POWDERCOATED ROOF ACCESSORIES - COLORBOND "MONUMENT"

15

PAINTED / POWDERCOATED COLUMNS - COLORBOND "JASPER"

16

ROLLER SHUTTER DOOR - COLORBOND "SHALE GREY"

17

POWDERCOATED ALUMINIUM LOUVRES - COLORBOND "BASALT"

18

TRIMDEK ROOF SHEETING - COLORBOND "SHALE GREY"

19

VISION GLAZING - CLEAR

ISSUE FOR S4.55

Client

hannas

Issue	Description	Date
A	DRAFT ISSUE FOR REVIEW	31.01.18
B	ISSUE FOR DA	05.02.18
C	AMENDED DA	10.04.18
D	DRAFT - ISSUE FOR PLANNING MODIFICATION	01.03.19
E	DRAFT - ISSUE FOR PLANNING MODIFICATION	15.05.19
F	ISSUE FOR S4.55	28.05.19
G	ISSUE FOR S4.55	05.06.19

Builder and/or subcontractors shall verify all project dimensions before commencing work on-site or off-site fabrication. Figured dimensions shall take precedence over scaled dimensions. This drawing is copyright and cannot be reproduced in whole or in part or by any medium without the written permission of Nettleton Tribe Partnership Pty Ltd

Builder:

Project Name

Bluestone Industrial Estate

Project Address

20 Picrite Close, Pemulwuy NSW 2145

Key Plan:

Drawing Title:

Elevations Sheet 2

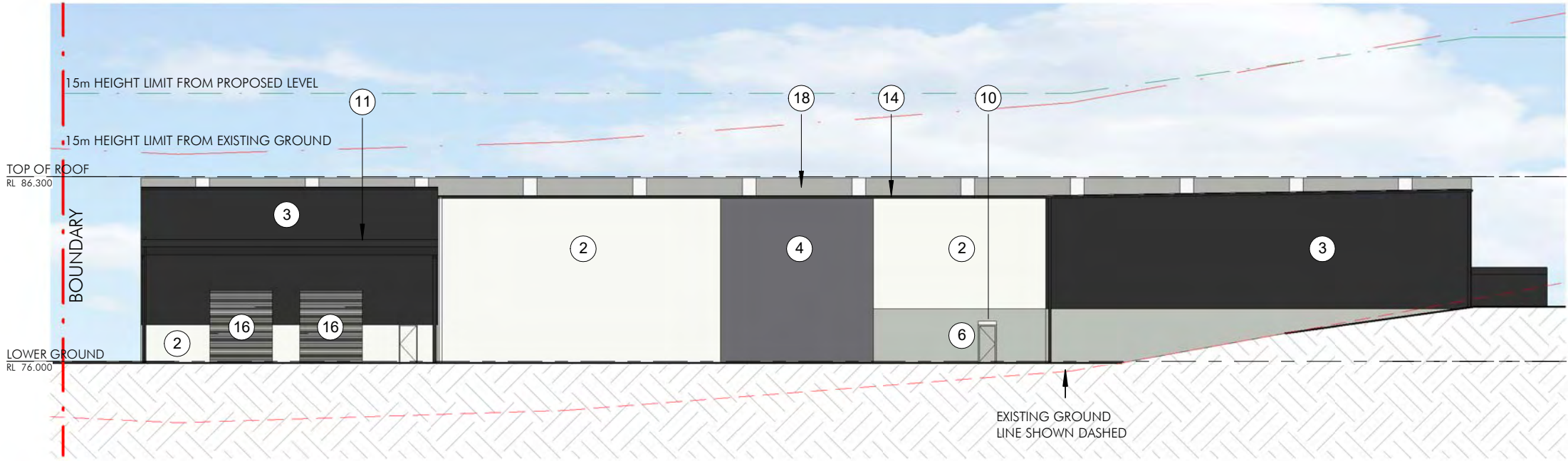
Author: JJ
Checker: SKL
Drawing Number: 10676_022

Scale: 1 : 300
Level: G

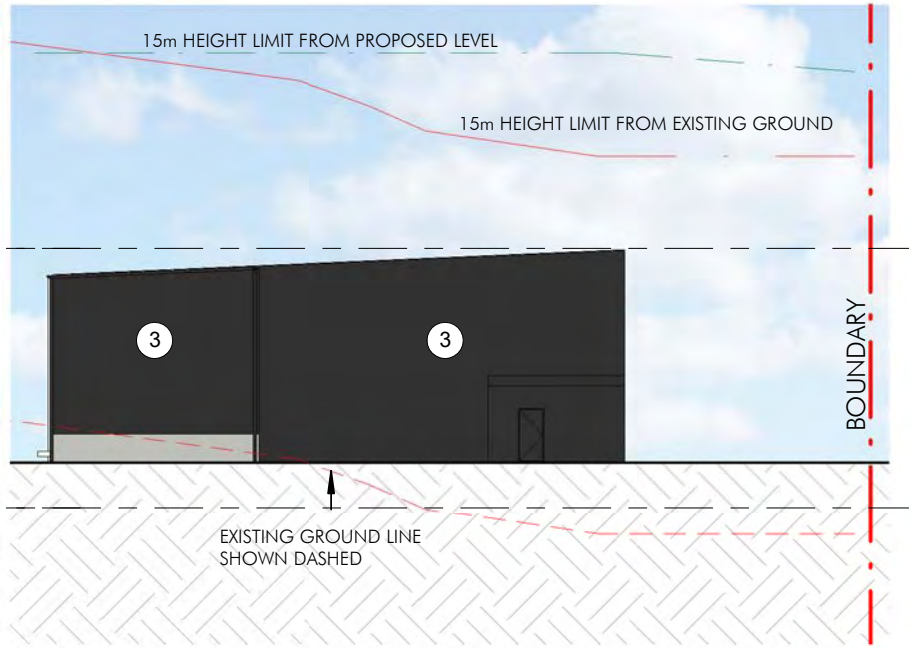
nettletontribe

nettleton tribe partnership pty ltd ABN 58 161 683 122
117 Willoughby Road, Crows Nest, NSW 2065
t +61 2 9431 6131
e: sydney@nettletontribe.com.au w: nettletontribe.com.au

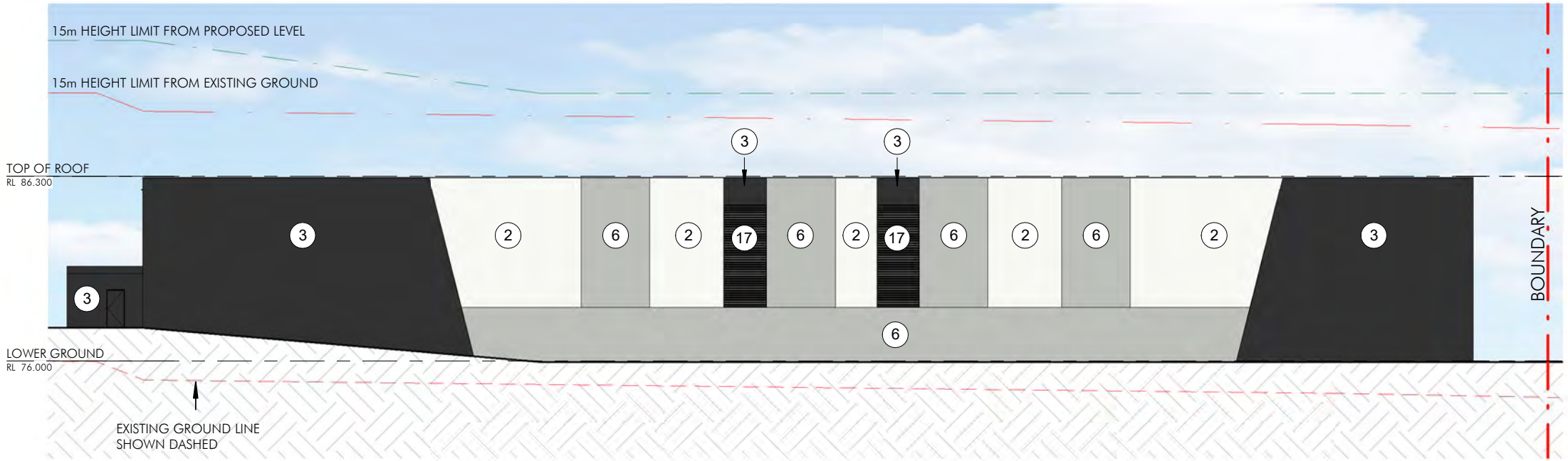
C:\Users\jane\Documents\10676_10676_BLDG_A_jane.dwg 4/5/2019 4:43:24 PM



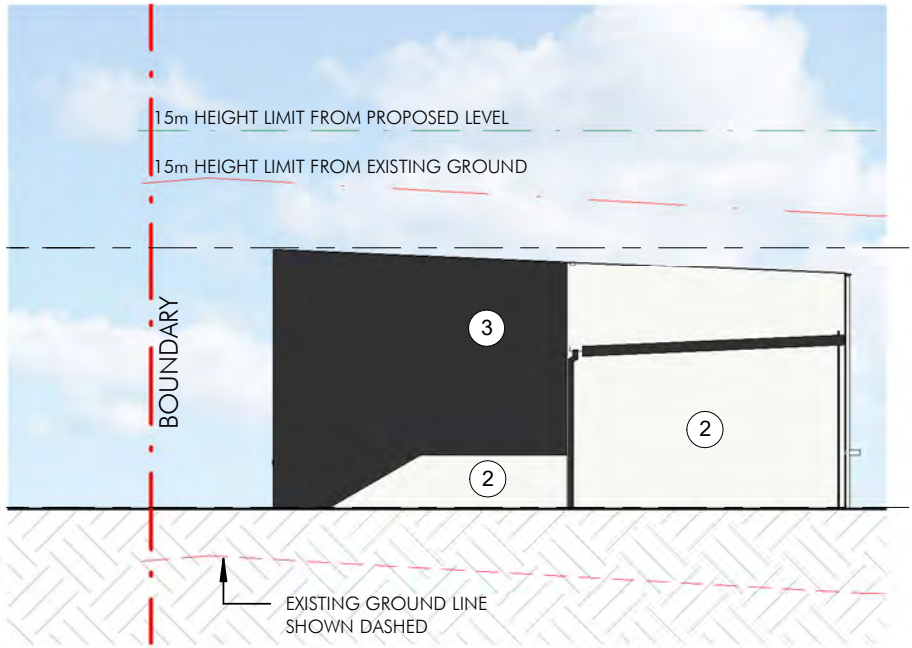
1 BUILDING B WEST ELEVATION
1 : 300



2 BUILDING B SOUTH ELEVATION
1 : 300



3 BUILDING B EAST ELEVATION
1 : 300



4 BUILDING B NORTH ELEVATION
1 : 300

FINISHES LEGEND			
1	PROFILED PRECAST PANEL	6	PAINTED PRECAST PANEL - COLORBOND "SHALE GREY"
2	PAINTED PRECAST PANEL - DULUX "VIVID WHITE"	7	PAINTED PRECAST PANEL - COLORBOND "GULLY"
3	PAINTED PRECAST PANEL - COLORBOND "MONUMENT"	8	POWDERCOATED ALUMINIUM WINDOW FRAME - WHITE
4	PAINTED PRECAST PANEL - COLORBOND "BASALT"	9	POWDERCOATED ALUMINIUM WINDOW FRAME - COLORBOND "MONUMENT"
5	PAINTED PRECAST PANEL - COLORBOND "JASPER"	10	POWDERCOATED ALUMINIUM DOOR FRAME & AWNING - WHITE
		11	POWDERCOATED ALUMINIUM DOOR FRAME & AWNING - COLORBOND "MONUMENT"
		12	POWDERCOATED ROOF ACCESSORIES - COLORBOND "BASALT"
		13	POWDERCOATED ROOF ACCESSORIES - COLORBOND "JASPER"
		14	POWDERCOATED ROOF ACCESSORIES - COLORBOND "MONUMENT"
		15	PAINTED / POWDERCOATED COLUMNS - COLORBOND "JASPER"
		16	ROLLER SHUTTER DOOR - COLORBOND "SHALE GREY"
		17	POWDERCOATED ALUMINIUM LOUVRES - COLORBOND "BASALT"
		18	TRIMDEK ROOF SHEETING - COLORBOND "SHALE GREY"
		19	VISION GLAZING - CLEAR

ISSUE FOR S4.55

Client

Issue	Description	Date
A	DRAFT ISSUE FOR REVIEW	31.01.18
B	ISSUE FOR DA	05.02.18
C	AMENDED DA	10.04.18
D	DRAFT - ISSUE FOR PLANNING MODIFICATION	01.03.19
E	DRAFT - ISSUE FOR PLANNING MODIFICATION	15.05.19
F	ISSUE FOR S4.55	28.05.19

Builder and/or subcontractors shall verify all project dimensions before commencing work on-site or off-site fabrication. Figured dimensions shall take precedence over scaled dimensions. This drawing is copyright and cannot be reproduced in whole or in part or by any medium without the written permission of Nettleton Tribe Partnership Pty Ltd

Builder:

Project Name

Bluestone Industrial Estate

Project Address

20 Picrite Close, Pemulwuy NSW 2145

Key Plan:

Drawing Title:

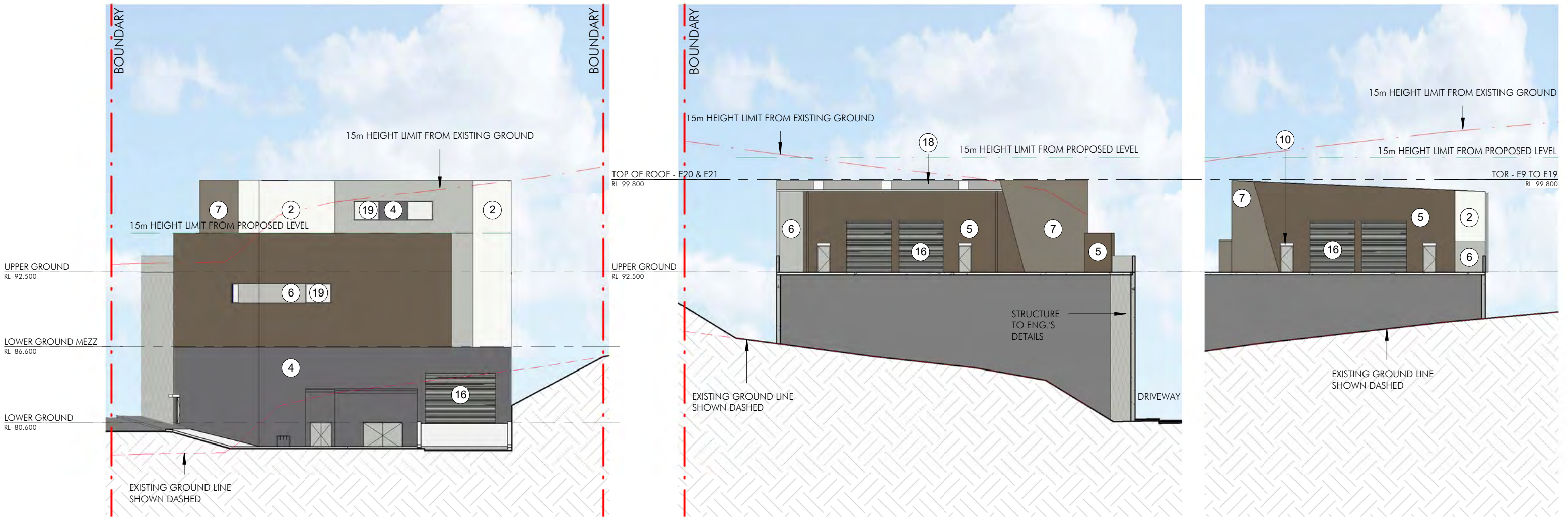
Elevations Sheet 3

Author: JJ
Checker: SKL
Drawing Number: 10676_023

Scale: 1 : 300
Level: F

nettletontribe

nettleton tribe partnership Pty Ltd ABN 58 161 683 122
117 Willoughby Road, Crows Nest, NSW 2065
t +61 2 9431 6131
e: sydney@nettletontribe.com.au w: nettletontribe.com.au



1 BUILDING C & E NORTH ELEVATION
1 : 300

2 BUILDING E20 & E21 SOUTH ELEVATION
1 : 300

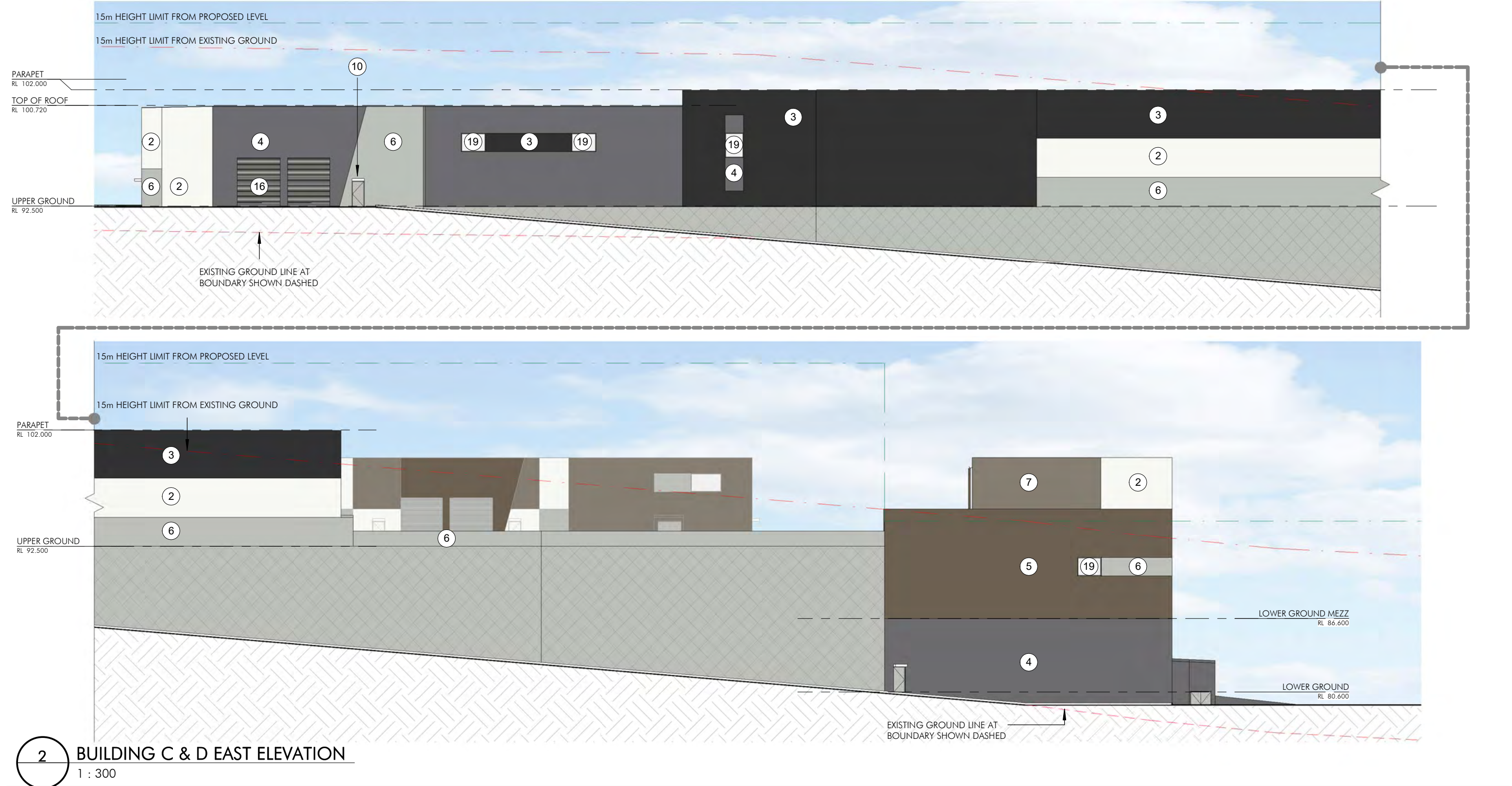
3 BUILDING E18 & E19 NORTH ELEVATION
1 : 300

FINISHES LEGEND

- | | | | | | | | |
|---|--|----|--|----|---|----|---|
| 1 | PROFILED PRECAST PANEL | 6 | PAINTED PRECAST PANEL - COLORBOND "SHALE GREY" | 11 | POWDERCOATED ALUMINIUM DOOR FRAME & AWNING - COLORBOND "MONUMENT" | 16 | ROLLER SHUTTER DOOR - COLORBOND "SHALE GREY" |
| 2 | PAINTED PRECAST PANEL - DULUX "VIVID WHITE" | 7 | PAINTED PRECAST PANEL - COLORBOND "GULLY" | 12 | POWDERCOATED ROOF ACCESSORIES - COLORBOND "BASALT" | 17 | POWDERCOATED ALUMINIUM LOUVRES - COLORBOND "BASALT" |
| 3 | PAINTED PRECAST PANEL - COLORBOND "MONUMENT" | 8 | POWDERCOATED ALUMINIUM WINDOW FRAME - WHITE | 13 | POWDERCOATED ROOF ACCESSORIES - COLORBOND "JASPER" | 18 | TRIMDEK ROOF SHEETING - COLORBOND "SHALE GREY" |
| 4 | PAINTED PRECAST PANEL - COLORBOND "BASALT" | 9 | POWDERCOATED ALUMINIUM WINDOW FRAME - COLORBOND "MONUMENT" | 14 | POWDERCOATED ROOF ACCESSORIES - COLORBOND "MONUMENT" | 19 | VISION GLAZING - CLEAR |
| 5 | PAINTED PRECAST PANEL - COLORBOND "JASPER" | 10 | POWDERCOATED ALUMINIUM DOOR FRAME & AWNING - WHITE | 15 | PAINTED / POWDERCOATED COLUMNS - COLORBOND "JASPER" | | |

ISSUE FOR S4.55

Client 	<table><thead><tr><th>Issue</th><th>Description</th><th>Date</th></tr></thead><tbody><tr><td>A</td><td>DRAFT ISSUE FOR REVIEW</td><td>31.01.18</td></tr><tr><td>B</td><td>ISSUE FOR DA</td><td>05.02.18</td></tr><tr><td>C</td><td>AMENDED DA</td><td>10.04.18</td></tr><tr><td>D</td><td>DRAFT - ISSUE FOR PLANNING MODIFICATION</td><td>01.03.19</td></tr><tr><td>E</td><td>DRAFT 80% - ISSUE FOR S4.55</td><td>17.05.19</td></tr><tr><td>F</td><td>ISSUE FOR S4.55</td><td>28.05.19</td></tr><tr><td>G</td><td>ISSUE FOR S4.55</td><td>05.06.19</td></tr></tbody></table> <p>Builder and/or subcontractors shall verify all project dimensions before commencing work on-site or off-site fabrication. Figured dimensions shall take precedence over scaled dimensions. This drawing is copyright and cannot be reproduced in whole or in part or by any medium without the written permission of Nettleton Tribe Partnership Pty Ltd</p>	Issue	Description	Date	A	DRAFT ISSUE FOR REVIEW	31.01.18	B	ISSUE FOR DA	05.02.18	C	AMENDED DA	10.04.18	D	DRAFT - ISSUE FOR PLANNING MODIFICATION	01.03.19	E	DRAFT 80% - ISSUE FOR S4.55	17.05.19	F	ISSUE FOR S4.55	28.05.19	G	ISSUE FOR S4.55	05.06.19	Builder:	Project Name Bluestone Industrial Estate Project Address 20 Picrite Close, Pemulwuy NSW 2145	Key Plan: 	Drawing Title: Elevations Sheet 4 Author: JJ Checker: SKL Drawing Number: 10676_024	Scale: 1 : 300 Level: G	nettletontribe <small>nettleton tribe partnership Pty Ltd ABN 58 161 683 122 117 Willoughby Road, Crows Nest, NSW 2065 t +61 2 9431 6131 e: sydney@nettletontribe.com.au w: nettletontribe.com.au</small>
Issue	Description	Date																													
A	DRAFT ISSUE FOR REVIEW	31.01.18																													
B	ISSUE FOR DA	05.02.18																													
C	AMENDED DA	10.04.18																													
D	DRAFT - ISSUE FOR PLANNING MODIFICATION	01.03.19																													
E	DRAFT 80% - ISSUE FOR S4.55	17.05.19																													
F	ISSUE FOR S4.55	28.05.19																													
G	ISSUE FOR S4.55	05.06.19																													



FINISHES LEGEND			
①	PROFILED PRECAST PANEL	⑥	PAINTED PRECAST PANEL - COLORBOND "SHALE GREY"
②	PAINTED PRECAST PANEL - DULUX "VIVID WHITE"	⑦	PAINTED PRECAST PANEL - COLORBOND "GULLY"
③	PAINTED PRECAST PANEL - COLORBOND "MONUMENT"	⑧	POWDERCOATED ALUMINIUM WINDOW FRAME - WHITE
④	PAINTED PRECAST PANEL - COLORBOND "BASALT"	⑨	POWDERCOATED ALUMINIUM WINDOW FRAME - COLORBOND "MONUMENT"
⑤	PAINTED PRECAST PANEL - COLORBOND "JASPER"	⑩	POWDERCOATED ALUMINIUM DOOR FRAME & AWNING - WHITE
⑪	POWDERCOATED ALUMINIUM DOOR FRAME & AWNING - COLORBOND "MONUMENT"	⑬	POWDERCOATED ROOF ACCESSORIES - COLORBOND "JASPER"
⑫	POWDERCOATED ROOF ACCESSORIES - COLORBOND "BASALT"	⑭	POWDERCOATED ROOF ACCESSORIES - COLORBOND "MONUMENT"
⑬	POWDERCOATED ROOF ACCESSORIES - COLORBOND "JASPER"	⑮	PAINTED / POWDERCOATED COLUMNS - COLORBOND "JASPER"
⑭	POWDERCOATED ROOF ACCESSORIES - COLORBOND "MONUMENT"	⑯	VISION GLAZING - CLEAR
⑮	PAINTED / POWDERCOATED COLUMNS - COLORBOND "JASPER"	⑰	POWDERCOATED ALUMINIUM LOUVRES - COLORBOND "BASALT"
⑯	VISION GLAZING - CLEAR	⑱	TRIMDEK ROOF SHEETING - COLORBOND "SHALE GREY"
⑰	POWDERCOATED ALUMINIUM LOUVRES - COLORBOND "BASALT"		
⑱	TRIMDEK ROOF SHEETING - COLORBOND "SHALE GREY"		

ISSUE FOR S4.55

Client

Issue	Description	Date
A	DRAFT ISSUE FOR REVIEW	31.01.18
B	ISSUE FOR DA	05.02.18
C	AMENDED DA	10.04.18
D	DRAFT - ISSUE FOR PLANNING MODIFICATION	01.03.19
E	DRAFT - ISSUE FOR S4.55	17.05.19
F	ISSUE FOR S4.55	28.05.19
G	ISSUE FOR S4.55	05.06.19

Builder and/or subcontractors shall verify all project dimensions before commencing work on-site or off-site fabrication. Figure dimensions shall take precedence over scaled dimensions. This drawing is copyright and cannot be reproduced in whole or in part or by any medium without the written permission of Nettleton Tribe Partnership Pty Ltd

Builder:

Project Name

Bluestone Industrial Estate

Project Address

20 Picrite Close, Pemulwuy NSW 2145

Key Plan:

Drawing Title:

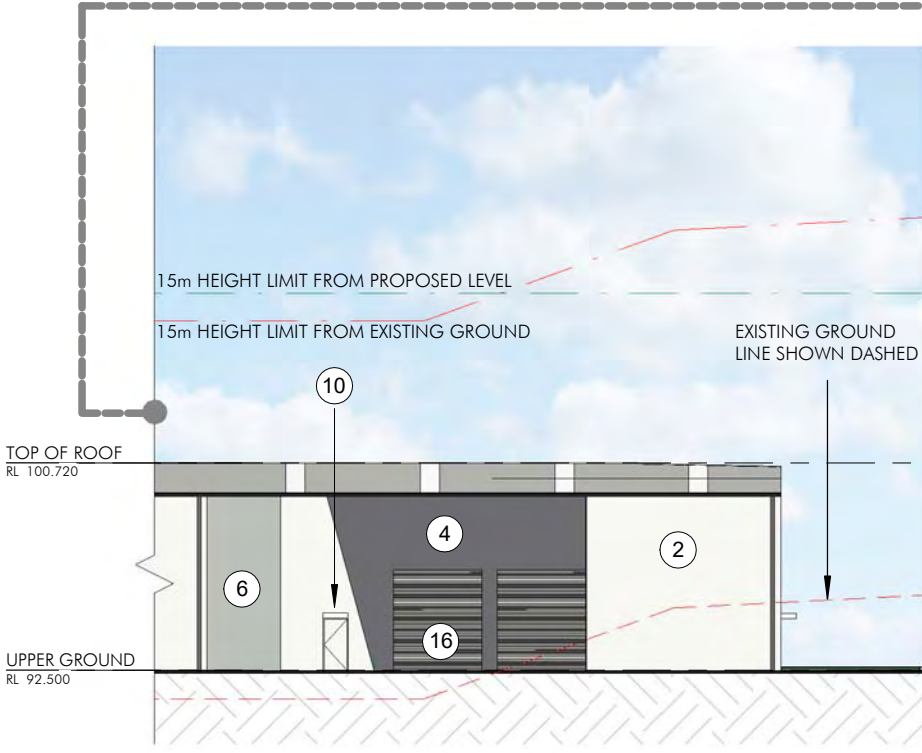
Elevations Sheet 5

Author: JJ
Checker: SKL
Drawing Number: 10676_025

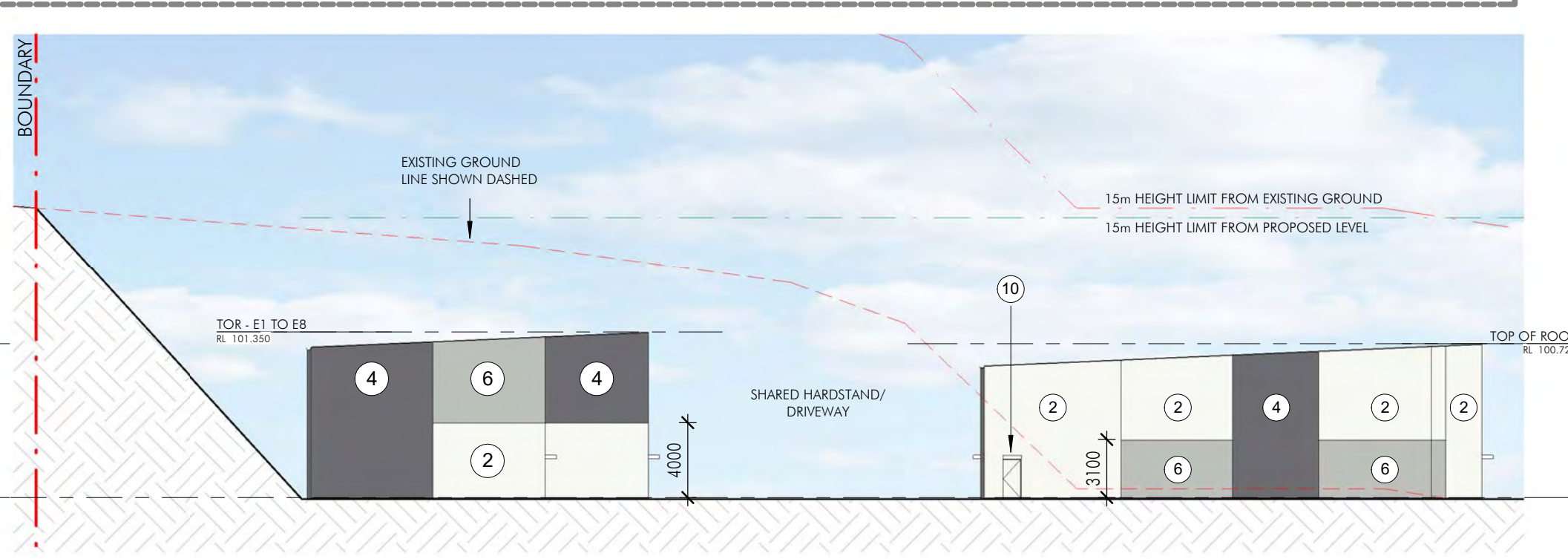
Scale: 1 : 300
Level: G

nettletontribe

nettleton tribe partnership pty ltd ABN 58 161 683 122
117 Willoughby Road, Crows Nest, NSW 2065
t +61 2 9431 6131
e: sydney@nettletontribe.com.au w: nettletontribe.com.au



1 BUILDING D WEST ELEVATION
1 : 300



2 BUILDING D & E SOUTH ELEVATION
1 : 300

FINISHES LEGEND

①

PROFILED PRECAST PANEL

②

PAINTED PRECAST PANEL - DULUX "VIVID WHITE"

③

PAINTED PRECAST PANEL - COLORBOND "MONUMENT"

④

PAINTED PRECAST PANEL - COLORBOND "BASALT"

⑤

PAINTED PRECAST PANEL - COLORBOND "JASPER"

⑥

PAINTED PRECAST PANEL - COLORBOND "SHALE GREY"

⑦

PAINTED PRECAST PANEL - COLORBOND "GULLY"

⑧

POWDERCOATED ALUMINIUM WINDOW FRAME - WHITE

⑨

POWDERCOATED ALUMINIUM WINDOW FRAME - COLORBOND "MONUMENT"

⑩

POWDERCOATED ALUMINIUM DOOR FRAME & AWNING - WHITE

⑪

POWDERCOATED ALUMINIUM DOOR FRAME & AWNING - COLORBOND "MONUMENT"

⑫

POWDERCOATED ROOF ACCESSORIES - COLORBOND "BASALT"

⑬

POWDERCOATED ROOF ACCESSORIES - COLORBOND "JASPER"

⑭

POWDERCOATED ROOF ACCESSORIES - COLORBOND "MONUMENT"

⑮

PAINTED / POWDERCOATED COLUMNS - COLORBOND "JASPER"

⑰

ROLLER SHUTTER DOOR - COLORBOND "SHALE GREY"

⑱

POWDERCOATED ALUMINIUM LOUVRES - COLORBOND "BASALT"

⑲

TRIMDEK ROOF SHEETING - COLORBOND "SHALE GREY"

⑲

VISION GLAZING - CLEAR

ISSUE FOR S4.55

Client

hannas

Issue	Description	Date
A	DRAFT ISSUE FOR REVIEW	31.01.18
B	ISSUE FOR DA	05.02.18
C	AMENDED DA	10.04.18
D	DRAFT - ISSUE FOR PLANNING MODIFICATION	01.03.19
E	DRAFT - ISSUE FOR S4.55	17.05.19
F	ISSUE FOR S4.55	28.05.19

Builder and/or subcontractors shall verify all project dimensions before commencing work on-site or off-site fabrication. Figured dimensions shall take precedence over scaled dimensions. This drawing is copyright and cannot be reproduced in whole or in part or by any medium without the written permission of Nettleton Tribe Partnership Pty Ltd

Builder:

Project Name

Bluestone Industrial Estate

Project Address

20 Picrite Close, Pemulwuy NSW 2145

Key Plan:

Drawing Title:

Elevations Sheet 6

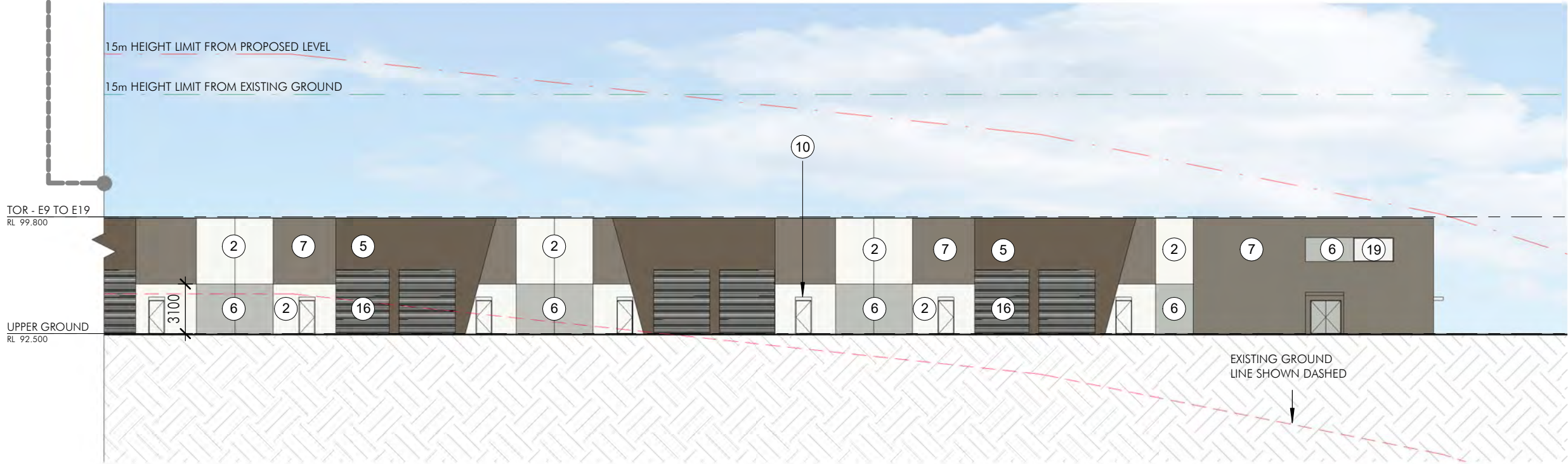
Author: JJ
Checker: SKL
Drawing Number: 10676_026

Scale: 1 : 300
Level: F

nettletontribe

nettleton tribe partnership Pty Ltd ABN 58 161 683 122
117 Willoughby Road, Crows Nest, NSW 2065
t +61 2 9431 6131
e sydney@nettletontribe.com.au w nettletontribe.com.au

C:\Users\jane\Documents\10676_10676_BLDG D_janewong.dwg 5/28/2019 3:22:22 PM



2 BUILDING E EAST ELEVATION
1 : 300

FINISHES LEGEND

- | | | | | | | | |
|---|--|----|--|----|---|----|---|
| 1 | PROFILLED PRECAST PANEL | 6 | PAINTED PRECAST PANEL - COLORBOND "SHALE GREY" | 11 | POWDERCOATED ALUMINIUM DOOR FRAME & AWNING - COLORBOND "MONUMENT" | 16 | ROLLER SHUTTER DOOR - COLORBOND "SHALE GREY" |
| 2 | PAINTED PRECAST PANEL - DULUX "VIVID WHITE" | 7 | PAINTED PRECAST PANEL - COLORBOND "GULLY" | 12 | POWDERCOATED ROOF ACCESSORIES - COLORBOND "BASALT" | 17 | POWDERCOATED ALUMINIUM LOUVRES - COLORBOND "BASALT" |
| 3 | PAINTED PRECAST PANEL - COLORBOND "MONUMENT" | 8 | POWDERCOATED ALUMINIUM WINDOW FRAME - WHITE | 13 | POWDERCOATED ROOF ACCESSORIES - COLORBOND "JASPER" | 18 | TRIMDEK ROOF SHEETING - COLORBOND "SHALE GREY" |
| 4 | PAINTED PRECAST PANEL - COLORBOND "BASALT" | 9 | POWDERCOATED ALUMINIUM WINDOW FRAME - COLORBOND "MONUMENT" | 14 | POWDERCOATED ROOF ACCESSORIES - COLORBOND "MONUMENT" | 19 | VISION GLAZING - CLEAR |
| 5 | PAINTED PRECAST PANEL - COLORBOND "JASPER" | 10 | POWDERCOATED ALUMINIUM DOOR FRAME & AWNING - WHITE | 15 | PAINTED / POWDERCOATED COLUMNS - COLORBOND "JASPER" | | |

ISSUE FOR S4.55

Client

Issue	Description	Date
A	DRAFT ISSUE FOR REVIEW	31.01.18
B	ISSUE FOR DA	05.02.18
C	AMENDED DA	10.04.18
D	DRAFT - ISSUE FOR PLANNING MODIFICATION	01.03.19
E	DRAFT 80% - ISSUE FOR S4.55	17.05.19
F	ISSUE FOR S4.55	28.05.19
G	ISSUE FOR S4.55	05.06.19

Builder and/or subcontractors shall verify all project dimensions before commencing work on-site or off-site fabrication. Figured dimensions shall take precedence over scaled dimensions. This drawing is copyright and cannot be reproduced in whole or in part or by any medium without the written permission of Nettleton Tribe Partnership Pty Ltd

Builder:

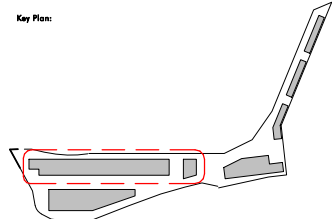
Project Name

Bluestone Industrial Estate

Project Address

20 Picrite Close, Pemulwuy NSW 2145

Key Plan:



Drawing Title:

Elevations Sheet 7

Author:

JJ

Checker:

SKL

Drawing Number:

10676_027

Scale:

1 : 300

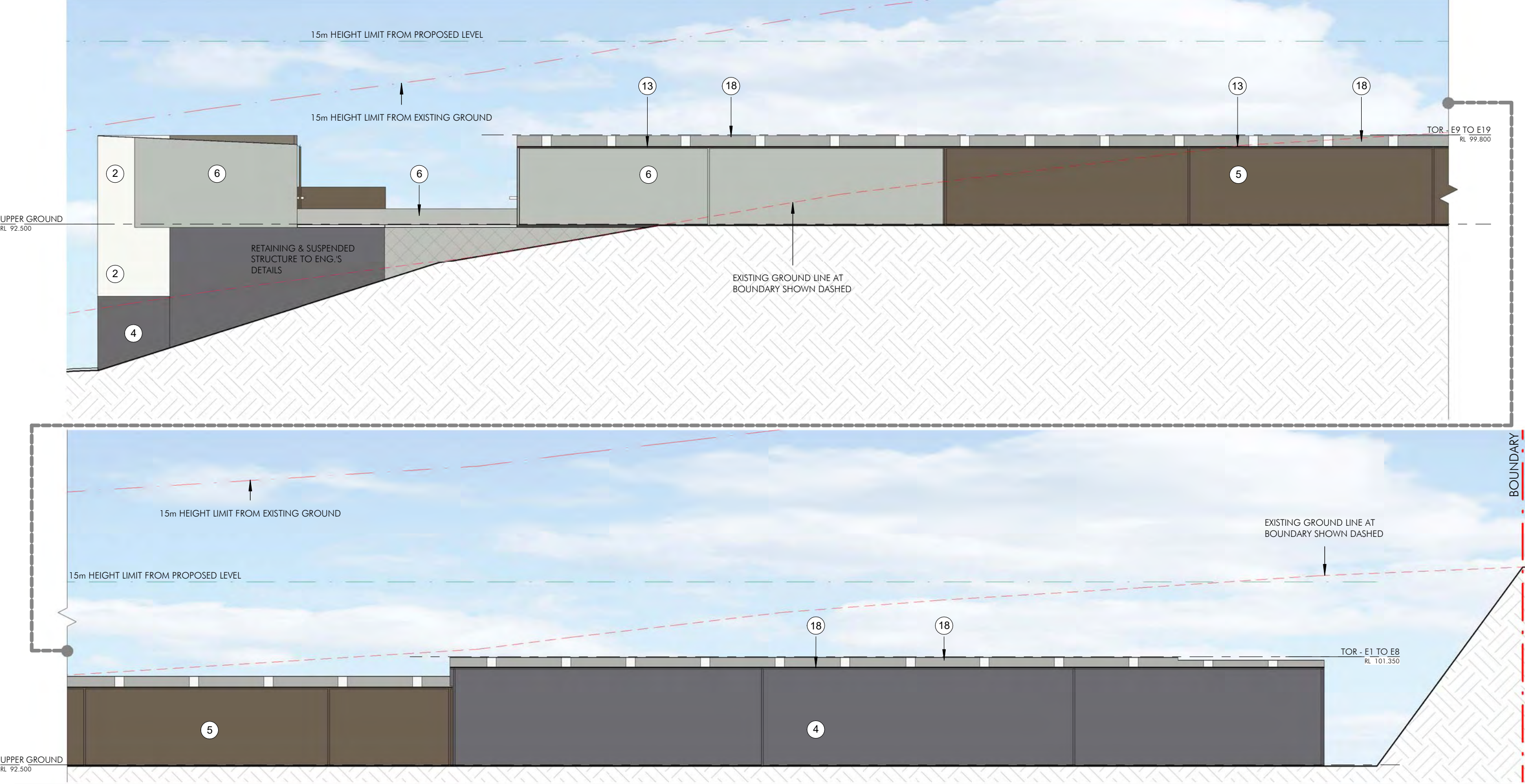
Level:

G

nettletontribe

nettleton tribe partnership Pty Ltd ABN 58 161 683 122
117 Willoughby Road, Crows Nest, NSW 2065
t +61 2 9431 6131
e: sydney@nettletontribe.com.au w: nettletontribe.com.au

C:\Users\jgarcia\Documents\10676_10676_BLDG_Elevations.dwg 5/28/2019 3:20:32 PM



FINISHES LEGEND			
①	PROFILED PRECAST PANEL	⑥	PAINTED PRECAST PANEL - COLORBOND "SHALE GREY"
②	PAINTED PRECAST PANEL - DULUX "VIVID WHITE"	⑦	PAINTED PRECAST PANEL - COLORBOND "GULLY"
③	PAINTED PRECAST PANEL - COLORBOND "MONUMENT"	⑧	POWDERCOATED ALUMINIUM WINDOW FRAME - WHITE
④	PAINTED PRECAST PANEL - COLORBOND "BASALT"	⑨	POWDERCOATED ALUMINIUM WINDOW FRAME - COLORBOND "MONUMENT"
⑤	PAINTED PRECAST PANEL - COLORBOND "JASPER"	⑩	POWDERCOATED ALUMINIUM DOOR FRAME & AWNING - WHITE
		⑪	POWDERCOATED ALUMINIUM DOOR FRAME & AWNING - COLORBOND "MONUMENT"
		⑫	POWDERCOATED ROOF ACCESSORIES - COLORBOND "BASALT"
		⑬	POWDERCOATED ROOF ACCESSORIES - COLORBOND "JASPER"
		⑭	POWDERCOATED ROOF ACCESSORIES - COLORBOND "MONUMENT"
		⑮	PAINTED / POWDERCOATED COLUMNS - COLORBOND "JASPER"
		⑯	ROLLER SHUTTER DOOR - COLORBOND "SHALE GREY"
		⑰	POWDERCOATED ALUMINIUM LOUVRES - COLORBOND "BASALT"
		⑱	TRIMDEK ROOF SHEETING - COLORBOND "SHALE GREY"
		⑲	VISION GLAZING - CLEAR

ISSUE FOR S4.55

2 BUILDING E WEST ELEVATION
1 : 300

Client

Issue	Description	Date
A	DRAFT ISSUE FOR REVIEW	31.01.18
B	ISSUE FOR DA	05.02.18
C	AMENDED DA	10.04.18
D	DRAFT - ISSUE FOR PLANNING MODIFICATION	01.03.19
E	DRAFT 80% - ISSUE FOR S4.55	17.05.19
F	ISSUE FOR S4.55	28.05.19

Builder and/or subcontractors shall verify all project dimensions before commencing work on-site or off-site fabrication. Figured dimensions shall take precedence over scaled dimensions. This drawing is copyright and cannot be reproduced in whole or in part or by any medium without the written permission of Nettleton Tribe Partnership Pty Ltd

Builder:

Project Name

Bluestone Industrial Estate

Project Address

20 Picrite Close, Pemulwuy NSW 2145

Key Plan:

Drawing Title:

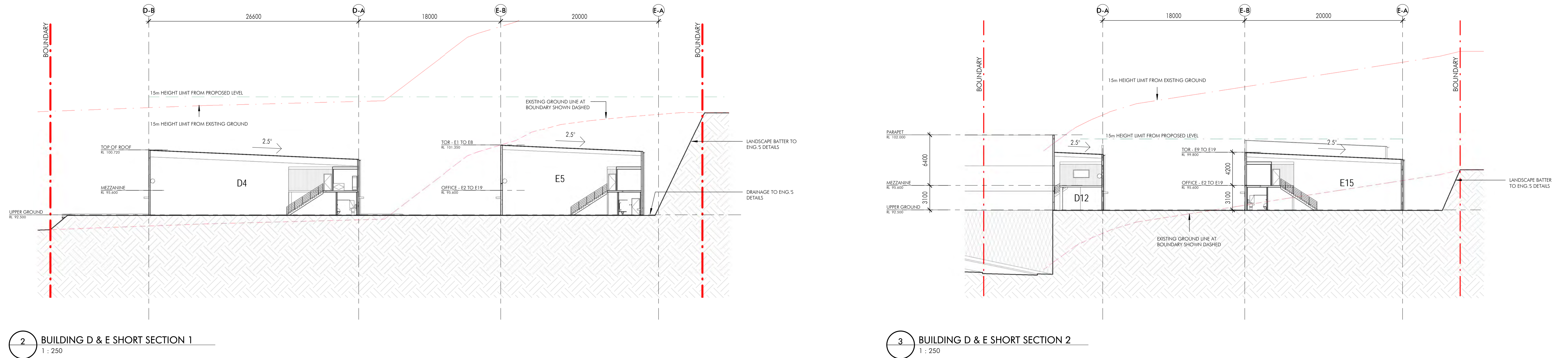
Elevations Sheet 8

Author: JJ
Checker: SKL
Drawing Number: 10676_028

Scale: 1 : 300
Level: F

nettletontribe

nettleton tribe partnership pty ltd ABN 58 161 683 122
117 Willoughby Road, Crows Nest, NSW 2065
t +61 2 9431 6131
e: sydney@nettletontribe.com.au w: nettletontribe.com.au



nettleton tribe partnership Pty Ltd ABN 58 161 683 122
117 Willoughby Road, Crows Nest, NSW 2065
t +61 2 9431 6431
e: sydney@nettletontribe.com.au w: nettletontribe.com.au



nettleton tribe partnership Pty Ltd ABN 58 161 683 122
117 Willoughby Road, Crows Nest, NSW 2065
t +61 2 9431 6431
e: sydney@nettletontribe.com.au w: nettletontribe.com.au