



# **KINGSWOOD TAFE WSCH PLANNING PACK**

---

# REGIONAL CONTEXT

---

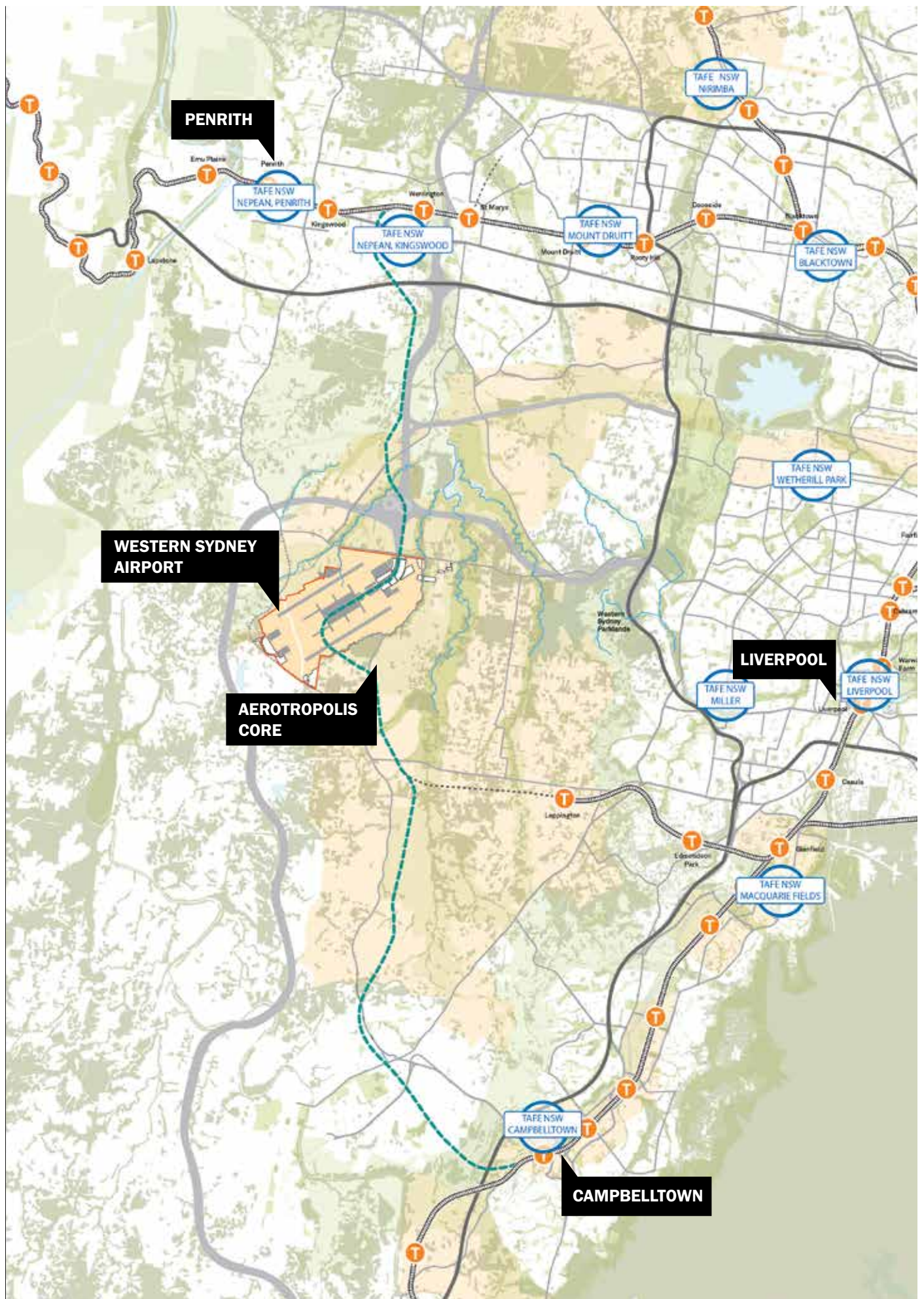
**Western Sydney is experiencing unprecedented development and growth spurred on by investment in the Western Sydney Airport, its associated infrastructure and the emerging Aerotropolis.**

---

The Greater Sydney Region Plan identifies the aerotropolis core being at the centre of a Western Sydney innovation corridor, connecting the Penrith and Campbelltown centres.

TAFE NSW and the Kingswood campus contribute to that innovation corridor, and this is set

to be enhanced through projects such as the Quarter Health and Education Precinct led by Penrith City Council, further development of the University of Western Sydney's Kingswood campus, and associated infrastructure projects linking these sites.

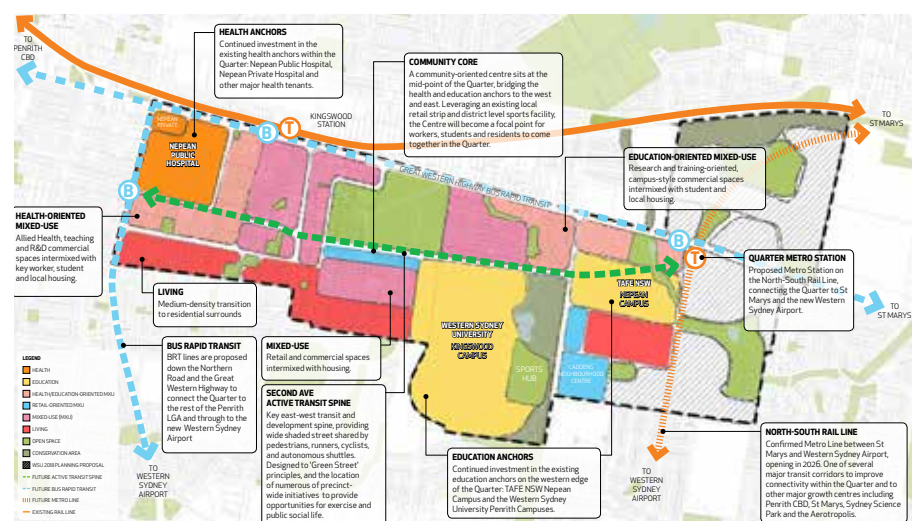


# KINGSWOOD CAMPUS CONTEXT

The TAFE NSW Nepean Kingswood Campus lies within a changing context. Located on the edge of the Penrith, the rural residential hinterland is transitioning to suburban with a mix of housing, institutional uses and centres. The immediate surrounds are currently being developed for medium density residential and a neighbourhood town centre.

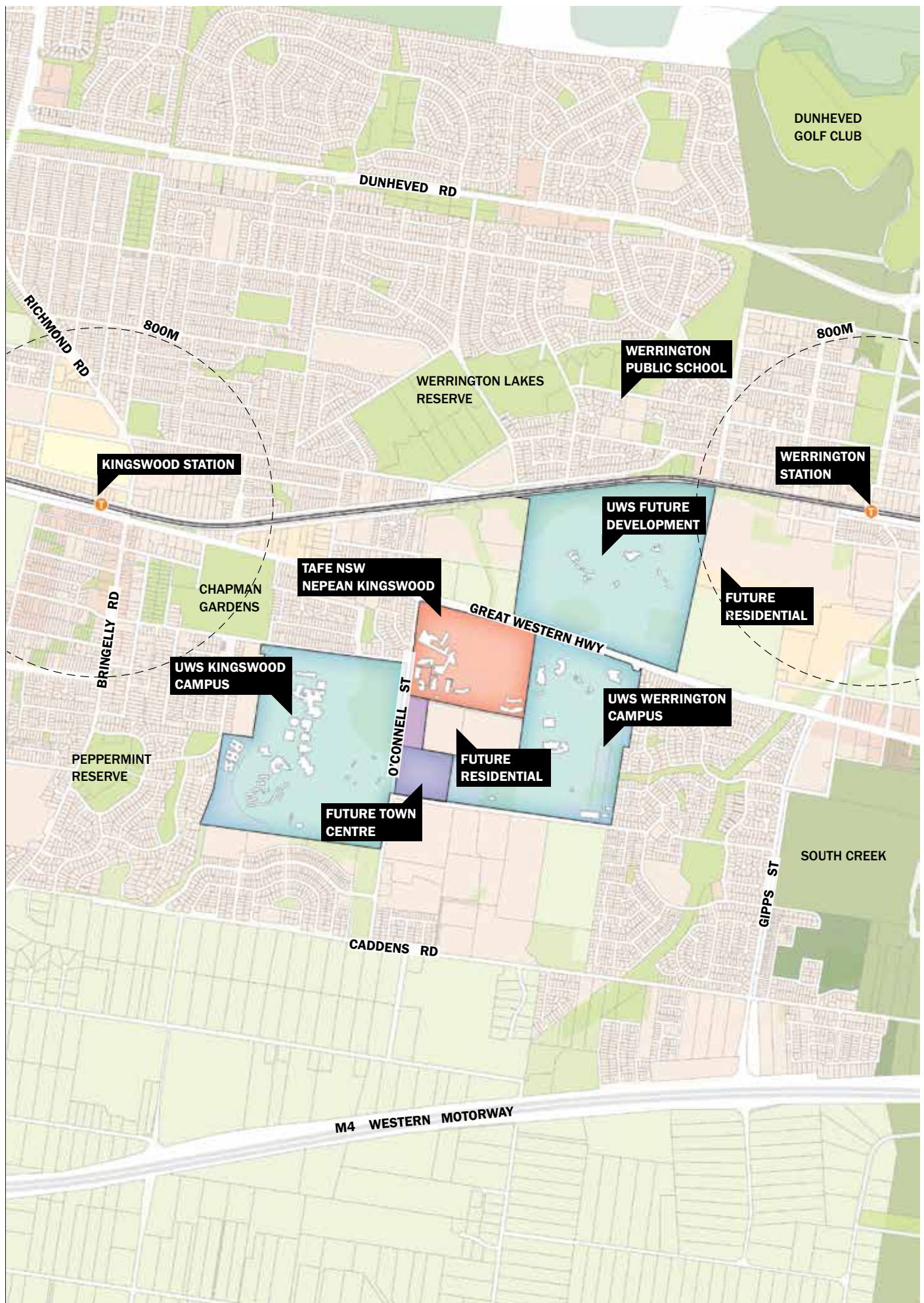
Kingswood TAFE Campus is critical to the development of the City of Penrith's vision for the Quarter Health and Education Precinct to become an international destination for investment in education, health services, research and related technology.

The Quarter Master Plan seeks to catalyse the potential of major health and education institutions to create a more connected and integrated health and education precinct. Key initiatives of the plan include a future high frequency bus link between Kingswood and Werrington Stations, improved amenity to the local centre and consolidated education uses on UWS land, freeing capacity for additional residential development.



The Quarter Master Plan, Produced by the City of Penrith. Since it's production, the location of the new Quarter Metro Station has moved around a kilometer to the East.





---

# THE SITE

---

**The TAFE NSW Nepean Kingswood site, established in the early 1980s, is focused around a core of activity along O'Connell Street. A Creative Arts centre was developed on the site's south eastern edge in the 1990s. The central and northern parts of the site remain as open fields and accommodate a sports field, parking and drainage function.**

---

## **Buildings and Use**

The most recent building on site sits adjacent to O'Connell Street. Built in 2015, the Health Services Building accommodates training areas such as dental, optical dispensing, audiometry and sterilisation, as well as campus administration, library and events space. Owing to its prominence, this building functions as Kingswood's front door, and orients students and visitors upon entry to the campus.

Other buildings have been variously built through the 1980s and 1990s. Generally between one and two storeys, they comprise a double brick or brick veneer construction with an institutional character. The buildings house teaching spaces, administration and larger studios, meaning they are flexible for a wide range of course types. A central

canteen offers daily amenity for staff and students.

Some buildings suffer from cracking, reportedly from the reactive (clay) ground conditions and inappropriate foundation construction. Owing to the buildings' age and susceptibility to cracking, apart from the 2015 Health Services Building, they do not pose a hard constraint in terms of siting the new construction hub.

## **Movement and Access**

The site arrival is from O'Connell Street and is principally by car. Car parking areas are peripheral to the main site activity on the northern and southern edges of the site. Internal pathways provide access between buildings, some of which are provided with a solid awning system.

Owing to the slope of the site,

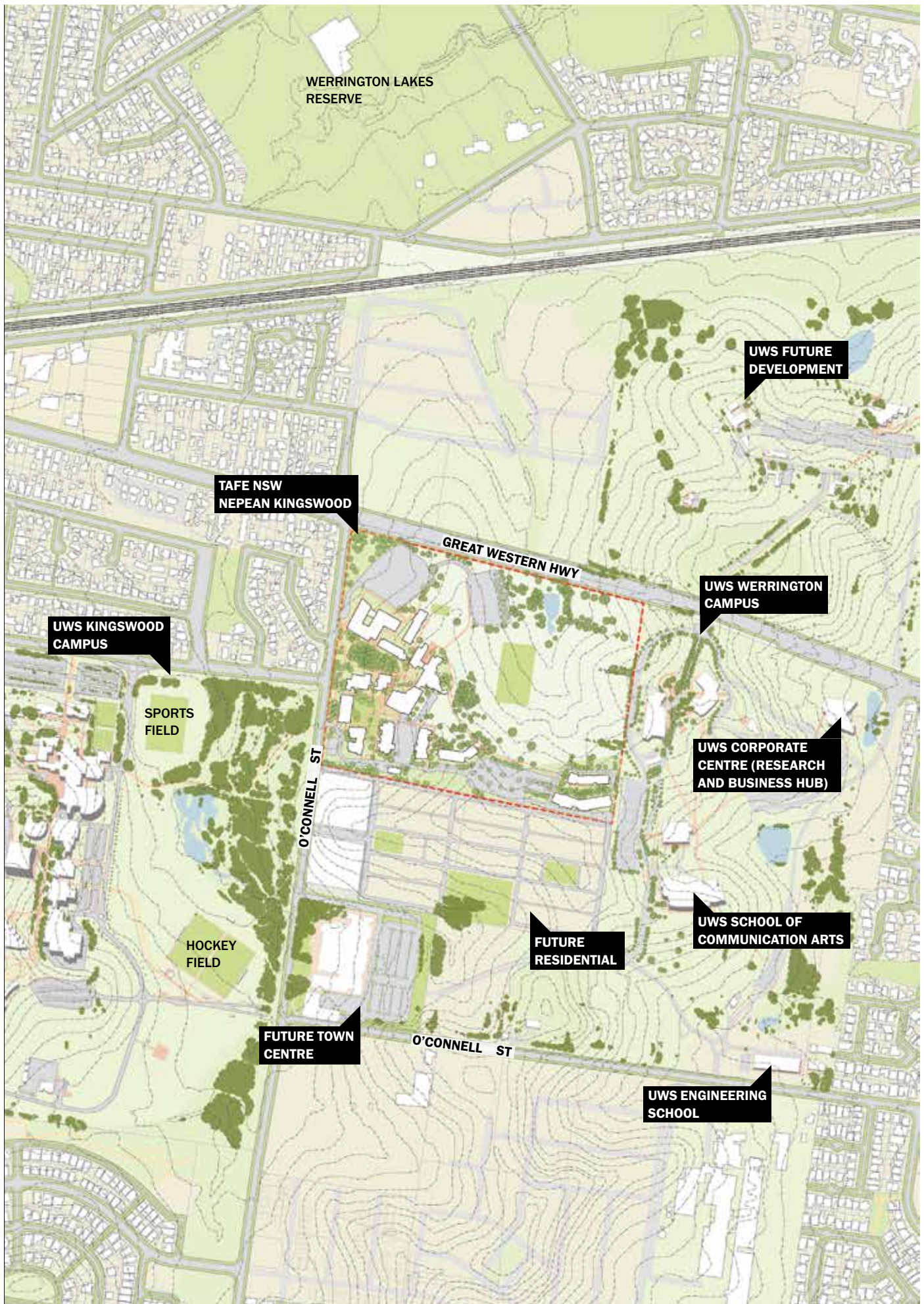
universal access to all buildings has not been provided. Some upper levels of buildings are not provided with lift access.

## **Environment and Character**

The building arrangement and orientation responds to the site's topography, with buildings generally aligned to step perpendicular to the slope. The site falls generally by three levels from the top of the site down to O'Connell Street, and accordingly to the drainage pond at the site's northern edge.

Spaces between buildings are landscaped and contain a mixture of introduced and native species. The green central spine and views from the site's ridgeline to the Blue Mountains are key site features that lend to its character.





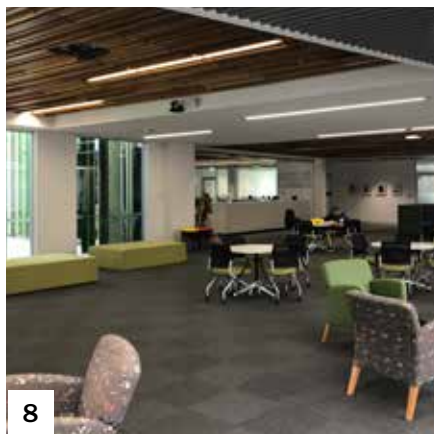


# EXISTING SITE CONDITIONS

1. Bridge connecting Building U and Building K
2. Arrival space within Building U
3. Courtyard between Building U, K and A
4. Light filled atrium space within Building U
5. Primary pedestrian axis
6. Pond adjacent to Building U
7. Cafe Courtyard
8. Library located within Building U
9. Building P and associated parking
10. Pedestrian connection between Building A and J
11. Building A and adjacent lot
12. Primary north-south pedestrian footpath adjacent to sports field
13. Open space and sports field







---

# **WESTERN SYDNEY CONSTRUCTION HUB**



**WESTERN SYDNEY CONSTRUCTION  
HUB WILL BE A MULTI-TRADE  
CENTRE OF EXCELLENCE WHICH WILL  
REINFORCE THE CHANGING FACE OF  
TRADE TRAINING DELIVERY IN NSW  
AND SUPPORT THE DEVELOPMENT OF  
THE AEROTROPOLIS.**



# SITE PLANNING PRINCIPLES



## Strong identity

1. Create a campus identity in the public realm, which draws from the parkland character of the site
2. Develop a campus heart for students, staff, and visitors
3. Integrate First Nations culture and heritage within the campus and its identity
4. Develop an internally cohesive, legible structure around high quality public realm
5. Reinforce clarity of north and south address and entry on O'Connell Street, and define and create a new address to UWS
6. Include provision for a potential entry from the adjacent UWS site and connections from the southern residential development
7. Establish street presence on Great Western Highway



## Integrating with the context

1. Support the Green Grid and associated active movement network with new shared entries and paths at the interface with the Great Western Highway
2. Integrate the surrounding street network to connect with the campus movement network
3. Develop connectivity to the UWS Campus through street networks, facility sharing, and programmatic synergies
4. Consolidate open space and built-form on the South and West boundaries in response development along O'Connell Street
5. Connect to the community and local industry by inviting visitors into and through the campus



## Clarity of movement

1. Focus pedestrian movement along key north south and east west axis, creating an active-transport core for the campus
2. Provide access for ease of servicing, with parking consolidated to the site edges
3. Develop a campus-wide universal access strategy
4. Establish clarity of entry points, and legibility of paths and path hierarchy around the site
5. Build on the existing pathways to establish clear viewlines around and across the site





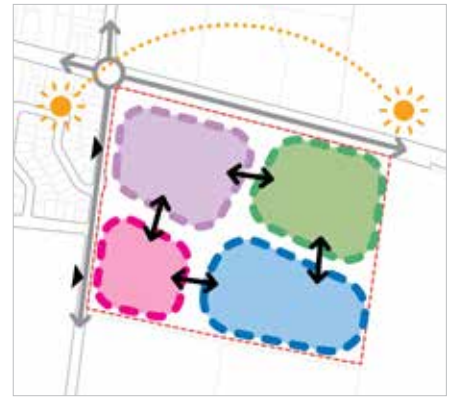
## Enhance the parkland campus experience

1. Enhance the function and structure of the site to create a connected campus embedded in landscape
2. Have a diversity of connected open spaces providing amenity and a diversity of activities for students, staff, and visitors
3. Orient buildings to capture parkland views towards Blue Mountains
4. Integrate universal access with the landscape to ensure dignified access for all
5. Build on the existing landscape strategy, extending and connecting the surrounding Cumberland Plain Woodland
6. Integrate First Nations culture, heritage, design, and maintenance principles for country
7. Embed CPTED principles into future development to ensure a safe campus for all



## Responsive and place-specific built-form

1. Develop a high-quality, finer-grain human-scaled architecture which is contextually responsive to the campus parkland experience
2. Integrate best-practice universal design principles into buildings
3. Ensure built-form responds to, and works with, existing landscape and contours
4. Include provision for a diversity of uses, to foster interaction and knowledge sharing, and blend formal and informal spaces
5. Ensure built-form is legible, provides active edges and presents an outward welcoming and inviting face



## Future focused

1. Consolidate activity for staged development
2. Embed sustainability and resilient design principles into buildings, public realm and open space including building orientation and passive solar design, tree retention, building systems to minimise energy use, re-use and adaptation of on site buildings and materials
3. Accommodate future site planning for potential development on UWS campus
4. Integrate flexibility for Industry engagement, and balancing public / private relationships as they develop
5. Create a resilient campus, which is durable, robust, and adaptable

# PRELIMINARY STRUCTURE PLAN & KEY MOVES

## Kingswood TAFE Campus is critical to the successful development of the City of Penrith's vision to establish an international Health and Education Precinct.

The Western Sydney University Redevelopment Plan will place Kingswood TAFE Campus within an increasingly urbanised context, close to local amenity, active transport networks and within easy reach of public transport. The Preliminary Structure Plan responds to this context to provide a framework for growth and the potential to consolidate educational uses into a campus core which supports and aligns with future development around the site.

The preliminary structure plan proposes a series of key moves which build upon the existing site structure and unlock the potential of the site for future development.

The site structure is informed by the existing built form grid, existing landscape and trees. New development lots have been identified to integrate with the existing site structure and recent developments. Existing buildings are retained and repurposed where possible.

A central east west pedestrian spine has been proposed as a primary structuring element to provide active transport connectivity linking O'Connell Street with UWS. New links to the Green Grid along the campus' northern boundary provide regional active transport connectivity. Additional movement corridors have been proposed to connect with the surrounding context of existing and proposed movement networks. Key north south links provide secondary movement corridors and form the basis for the open space network of a diversity of open space typologies

to enhance the parklands campus experience.

The plan includes a vehicle access loop around the periphery of the new campus core primarily accessed off O'Connell Street with a potential connection from UWS to the east.

The campus identity is strengthened through the creation of a legible urban structure consolidating the campus core to the west, south and east. Key sites visible from the Western Motorway provide opportunities to strengthen the TAFE's identity and reinforce the western and north eastern gateways.

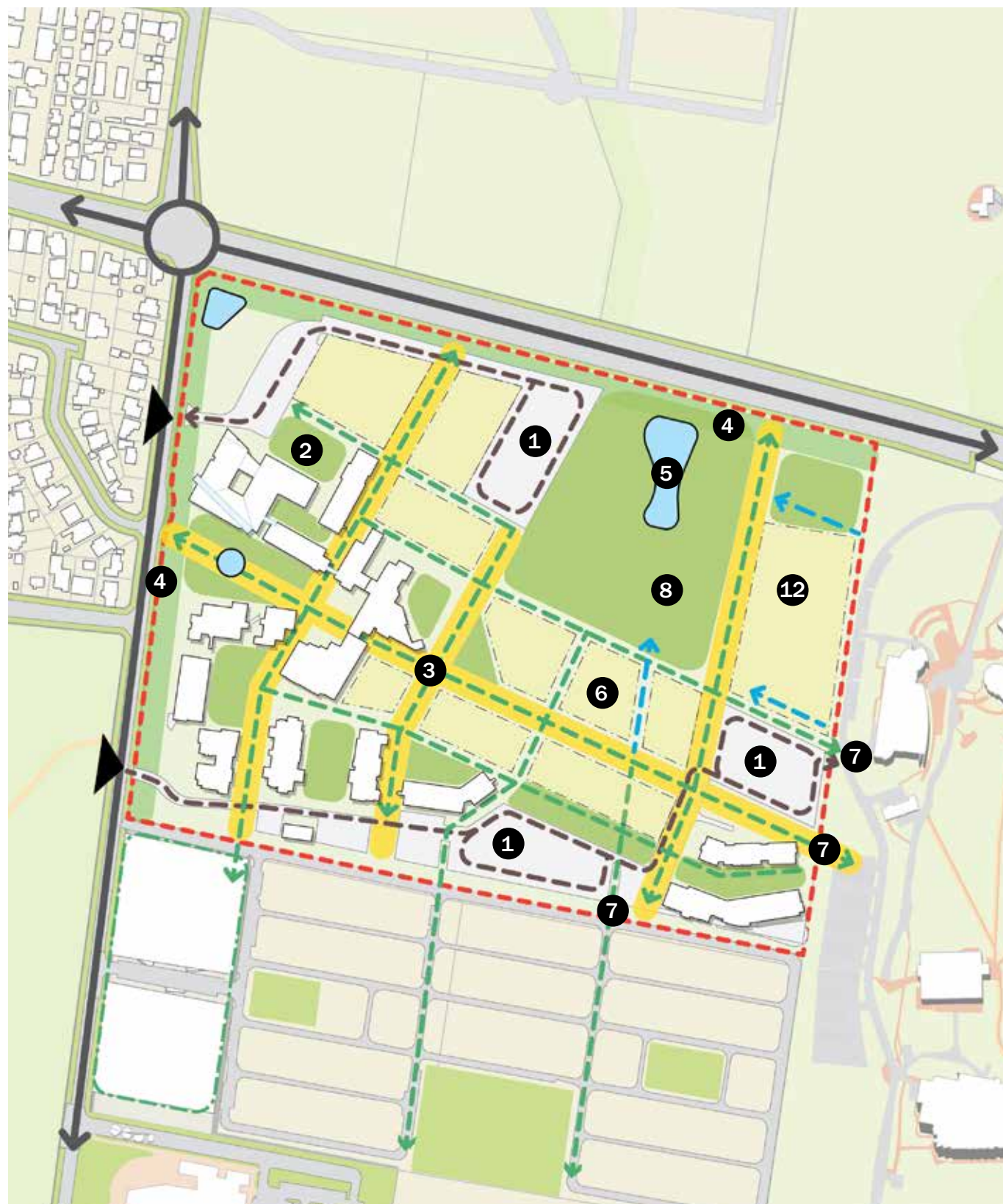
The enhanced public realm and open spaces create a cohesive urban structure underpinning the parkland identity which draws inspiration from the existing landscape qualities of the campus. The fine grain character and quality of the landscape and buildings contribute to the presence of the campus environment and improve permeability, wayfinding and access by incorporating CPTED and universal design principles.

The campus core is located on the western side of the site to maximise adjacency to O'Connell Street and the future town centre development to the south. The campus heart south of Building U builds upon the existing campus structure, drawing people into a more central location to support an active and vibrant campus experience. Future expansion to the east strengthens the connection between TAFE and UWS and creates a second campus core.

### Key Moves

1. Reorganise site parking areas to provide a vehicle movement and servicing circuit
2. Shift existing driveway entry in front of Building U outside of the main pedestrian desire line to avoid conflicts and enhance entry experience. Location to be determined subject to transport consultant advice
3. Enhance key campus spines with legible pedestrian wayfinding and connectivity
4. Provide a landscape buffer along the western and northern edge as an interface with adjacent single residential development and the Green Grid
5. Enhance existing drainage ponds as landscape features
6. Provide new building sites that offer campus expansion consistent with an agreed site structure
7. Provide new or potential entry and connections with adjacent sites (as vehicle or pedestrian links)
8. Retain the open field and enhance views to the Blue Mountains
9. Investigate consolidation of the campus to the west, south and east of the new circulation spine creating a new address at the interface with UWS
10. Extend movement corridors from the surrounding context into the campus to increase permeability and passive surveillance
11. Provide a site arrangement that allows the Western Sydney Construction Hub to be integrated into the Kingswood TAFE campus.
12. WSCH site





# INDICATIVE SITE PLAN

A series of new open spaces that complement Kingswood TAFE Campus is critical to the successful development of the City of Penrith's vision to establish an international Health and Education Precinct.



Monash University  
Taylor Cullity Lethlean

## ELEVATED DECK

- Views across campus
- Opportunity for breakout space from workshops
- Transitional space to connect across building levels



Monash University  
Taylor Cullity Lethlean

## CENTRAL COURT

- External learning space
- Sheltered from the elements
- Social Hub
- Connection to WSU campus
- Opportunity to retain and feature existing trees on site

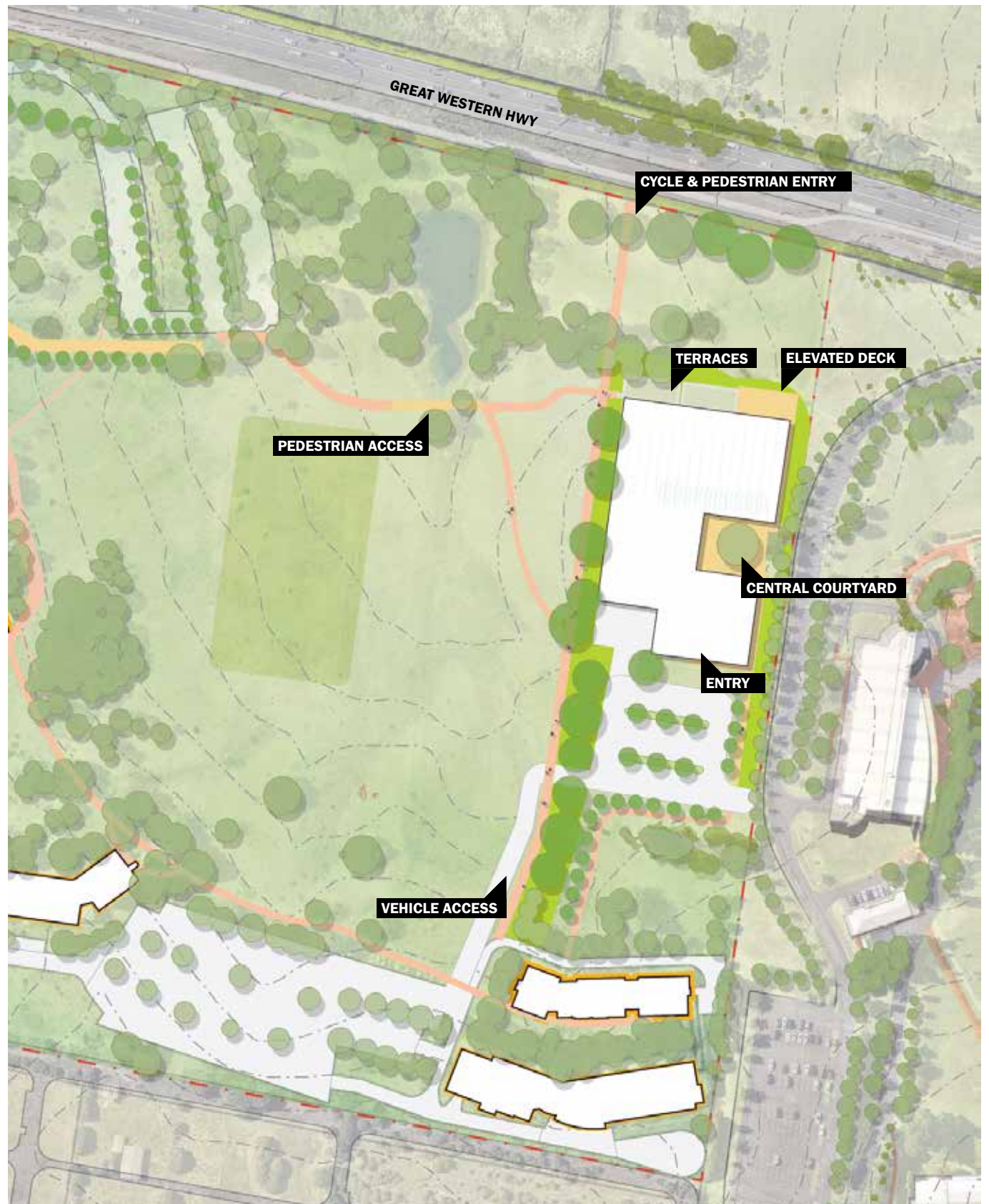


University of Toronto  
Schollen & Company

## SOCIAL TERRACES

- Flexible outdoor space
- Addressing East-West level change







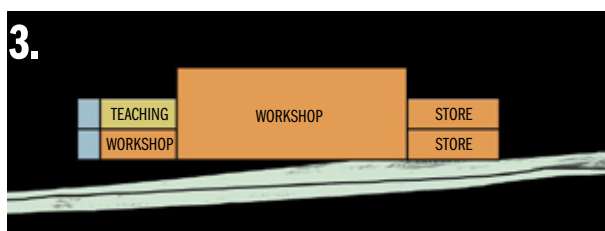
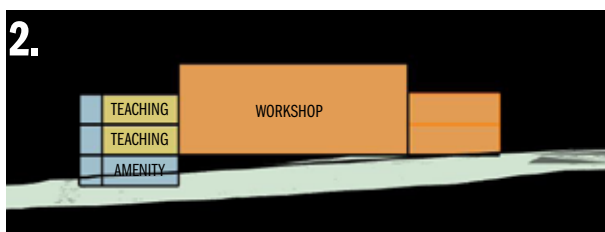
# SITE PLAN

**This indicative plan locates the Construction Hub towards the North-East corner of the Kingswood Campus. The site sits at the top of the ridge, and between two drainage channels.**

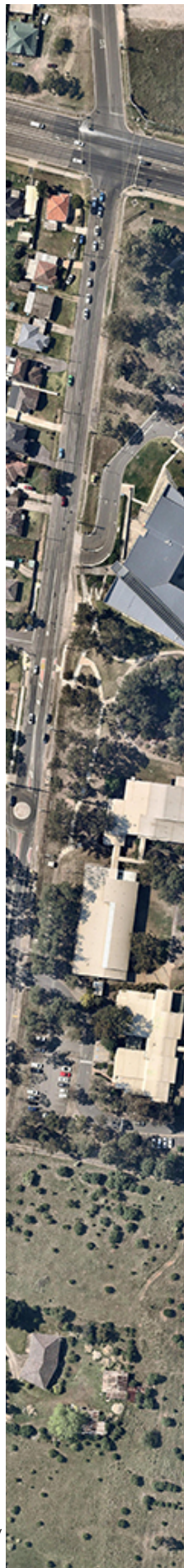
## KEY MOVES:

- Programme split over two and half floors, following the contours of the site to the west towards the pond
- North-south orientation, single loaded corridor facing the parkland to the west takes advantage of views towards the Kingswood Campus, creating active frontages to the west, north and south
- Access from the south through extension of the existing carpark route and through university campus to the east
- Servicing situated along the eastern face accessed from the south-east corner of the building, with easy access from the carpark

## INDICATIVE SECTIONS:



- PEDESTRIAN LINK
- VEHICLE ACCESS
- DRAINAGE LINE
- ACTIVE EDGE
- > VIEWS INTO THE VALLEY
- △ ENTRANCE















## **Studios**

**Brisbane**  
36 Warry Street  
Fortitude Valley QLD Australia 4006  
T +61 7 3914 4000  
E brisbane@hassellstudio.com

**Hong Kong**  
22F, 169 Electric Road  
North Point Hong Kong  
T +852 2552 9098  
E hongkong@hassellstudio.com

**London**  
1 Curtain Place  
London EC2A 3AN United Kingdom  
T +44 20 7490 7669  
E london@hassellstudio.com

**Melbourne**  
61 Little Collins Street  
Melbourne VIC Australia 3000  
T +61 3 8102 3000  
E melbourne@hassellstudio.com

**Perth**  
Level 1  
Commonwealth Bank Building  
242 Murray Street  
Perth WA Australia 6000  
T +61 8 6477 6000  
E perth@hassellstudio.com

**San Francisco**  
650 California Street  
Level 7  
San Francisco CA 94108 United States  
T +1 415 860 7067  
E sanfrancisco@hassellstudio.com

**Shanghai**  
12F base 45 Caoxi North Road  
Xuhui District Shanghai 200030 China  
T +8621 5456 3666  
E shanghai@hassellstudio.com

**Singapore**  
33 Tras Street  
#02-01 078973 Singapore  
T +65 6224 4688  
E singapore@hassellstudio.com

**Sydney**  
Level 2 Pier 8/9  
23 Hickson Road  
Sydney NSW Australia 2000  
T +61 2 9101 2000  
E sydney@hassellstudio.com