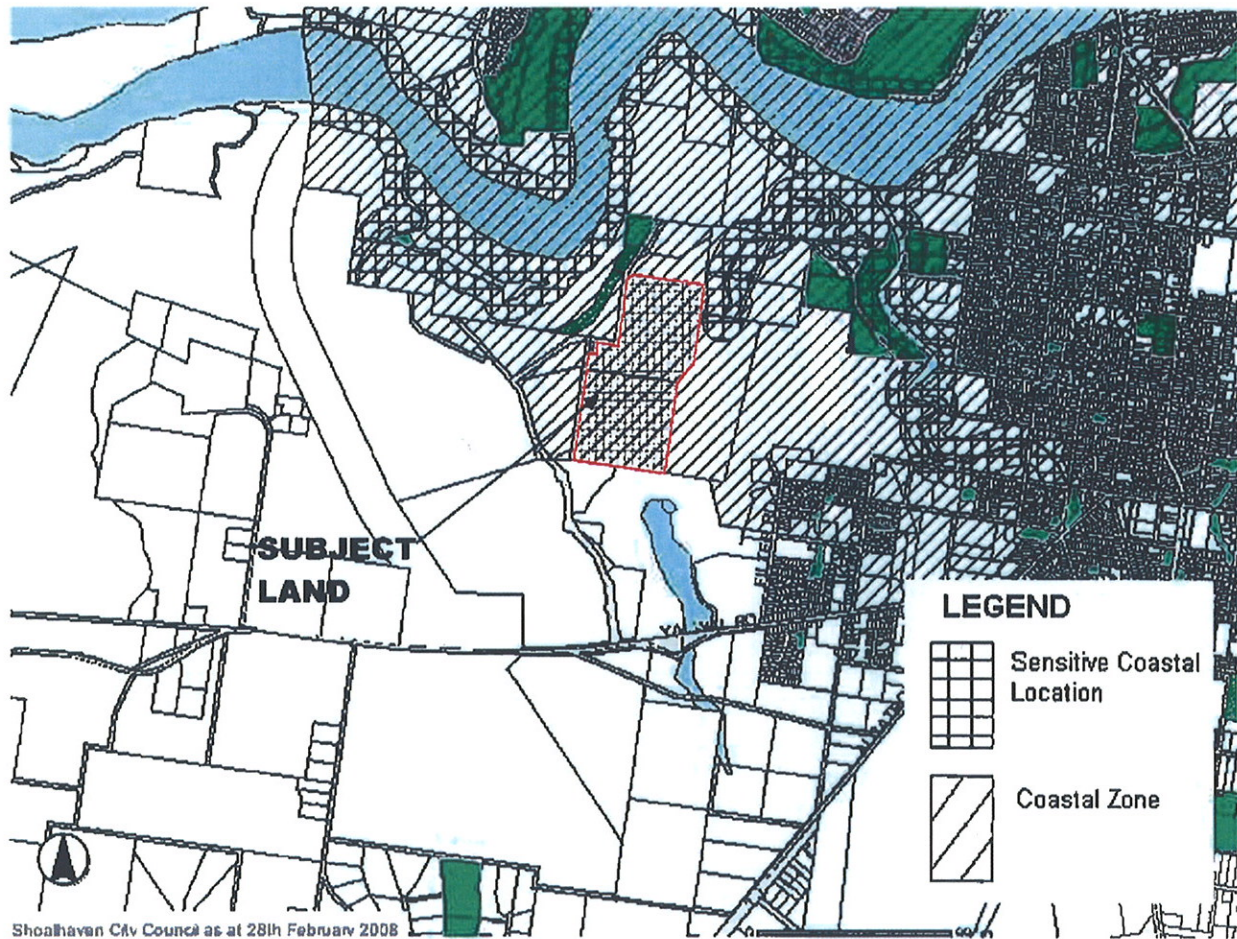


Appendix 1 – Coastal Land Mapping



Appendix 2 – Section 54 Resolution Nowra Bomaderry LEP

ADOPTED AT COUNCIL MEETING HELD ON WEDNESDAY 2 NOVEMBER 2005

1408. Nowra-Bomaderry Structure Plan

File 29362-03, 1028-03, 33393

RECOMMENDED that

- a) The draft Nowra-Bomaderry Structure Plan be placed on public exhibition for a period of 8 weeks;
- b) Council hold a public meeting during the public exhibition period to outline the provisions of the Draft Plan; and
- c) Council formally resolve to prepare a Local Environmental Plan on the land to which the Draft Nowra-Bomaderry Structure Plan applies.

Appendix 3 – Section 54 Resolution City Wide LEP

ADOPTED AT COUNCIL MEETING HELD ON Wednesday, 2 November 2005

1557. NSW Draft Standard Local Environmental Plan (LEP)

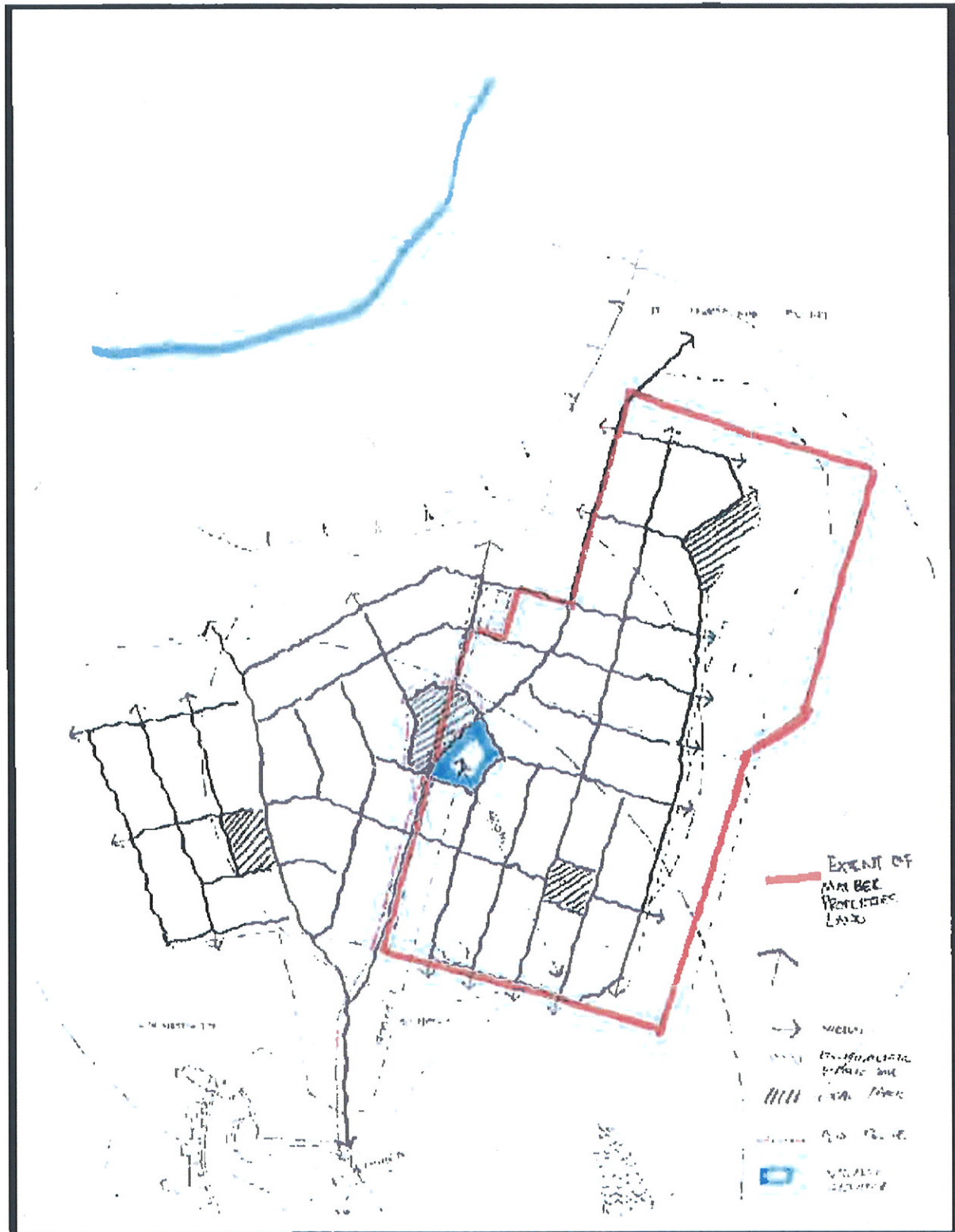
File 31157, 33363

RESOLVED on a MOTION of Cllr Willmott seconded Cllr Kearney that Council

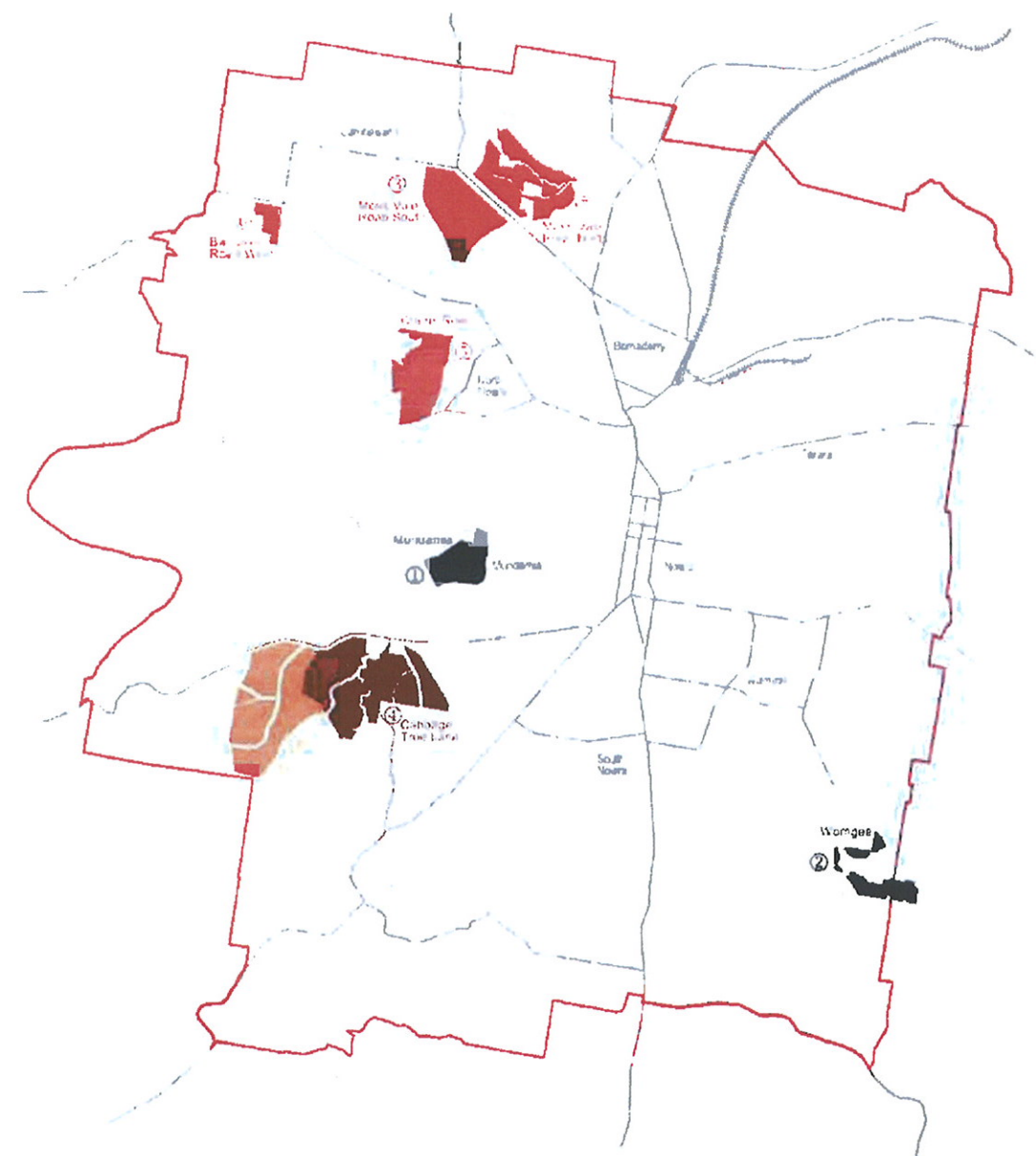
- a) **Make a submission on the Draft Standard Local Environmental Plan as set out in the report, together with any other matters it may wish to include.**
- b) **Formally resolve to prepare a Citywide Draft Local Environmental Plan with the objective of making Shoalhaven Local Environmental Plan 1985 consistent with the NSW Government's Standard Local Environmental Plan provisions.**

CITY SERVICES & COMMUNITY AND OPERATIONS

Appendix 4 – Concept Development Plan



Appendix 5 – Map 8.1 from Nowra Bomaderry Structure Plan



Possible Development
Phasing: New Living Areas



Nyara Barnadette: Structure Plan




DRAFT



September 2005

A horizontal scale bar with vertical tick marks at 0, 1, and 2. Below the bar is the label "Micrometers".

Legend

-  Structure Plan Boundary
 Phase 1 and 2
 Phase 3 and 4
 Phase 5 and 6
 Phase 7
 Phase 8
 Phase 9