

- CLASSROOM
- ENTRY
- GARAGE
- LIFT
- PLAY SPACE
- STORAGE
- WET AREAS

PRELIMINARY



Issue			
No.	Date	Description	Chkd
A	30.07.18	UPDATE	SJF
B	30.08.18	PRE-SEARs MEETING	SJF
C	26.11.18	SEARs	SJF

Architect
NBRSARCHITECTURE.

Sydney
61 2 9922 2344
nbrsarchitecture.com
Any form of replication of this drawing in full or in part without the written permission of NBRS+PARTNERS Pty Ltd constitutes an infringement of the copyright.
Nominated Architects:
Geoffrey Deane 3766; Andrew Duffin; Garry Hoddinett 5286
ABN 16 002 247 565 © 2017

Project
Camperdown Montessori

at
1-7 Probert Street, Camperdown NSW 2050

for
Inner Sydney Montessori School

Drawing Title
GROUND FLOOR PLAN

Issue			
No.	Date	Description	Chkd
A	30.07.18	UPDATE	SJF
B	30.08.18	PRE-SEARs MEETING	SJF
C	26.11.18	SEARs	SJF

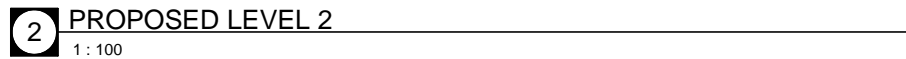
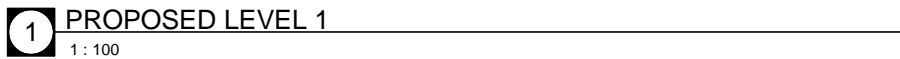
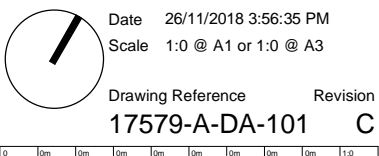
Sydney
61 2 9922 2344
nbrsarchitecture.com

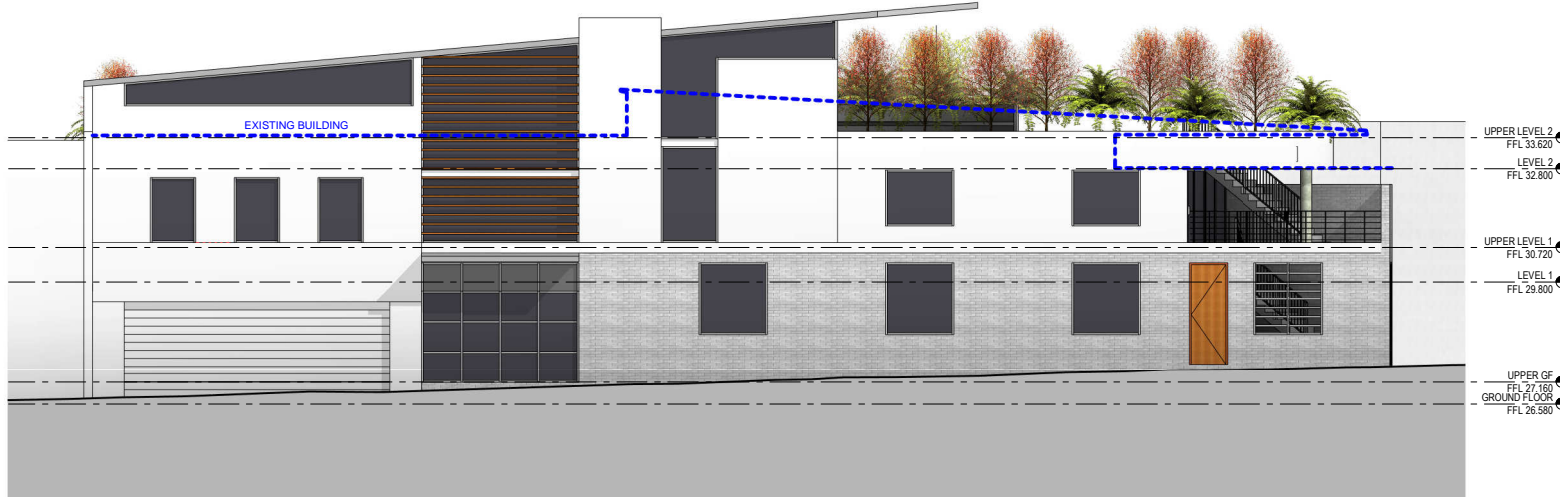
Any form of replication of this drawing in full or in part without the written permission of NBRSPARTNERS Pty Ltd constitutes an infringement of the copyright

Nominated Architects:
Geoffrey Deane 3766; Andrew Duffin; Garry Hoddinett 5286
ABN 16 002 247 565

© 2017

Drawing Title
LEVEL 1 + 2 PLANS





1 EAST ELEVATION
1 : 100



2 WEST ELEVATION
1 : 100

PRELIMINARY

Issue			
No.	Date	Description	Chkd
C	26.11.18	SEARs	SJF

Architect
NBRSARCHITECTURE.

Sydney
61 2 9922 2344
nbrsarchitecture.com

Any form of replication of this drawing in full or in part without the written permission of NBRSPARTNERS Pty Ltd constitutes an infringement of the copyright

Nominated Architects:
Geoffrey Deane 3766; Andrew Duffin; Garry Hoddinett 5286
ABN 16 002 247 565


© 2017

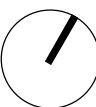
Project
Camperdown Montessori

at
1-7 Probert Street, Camperdown NSW 2050

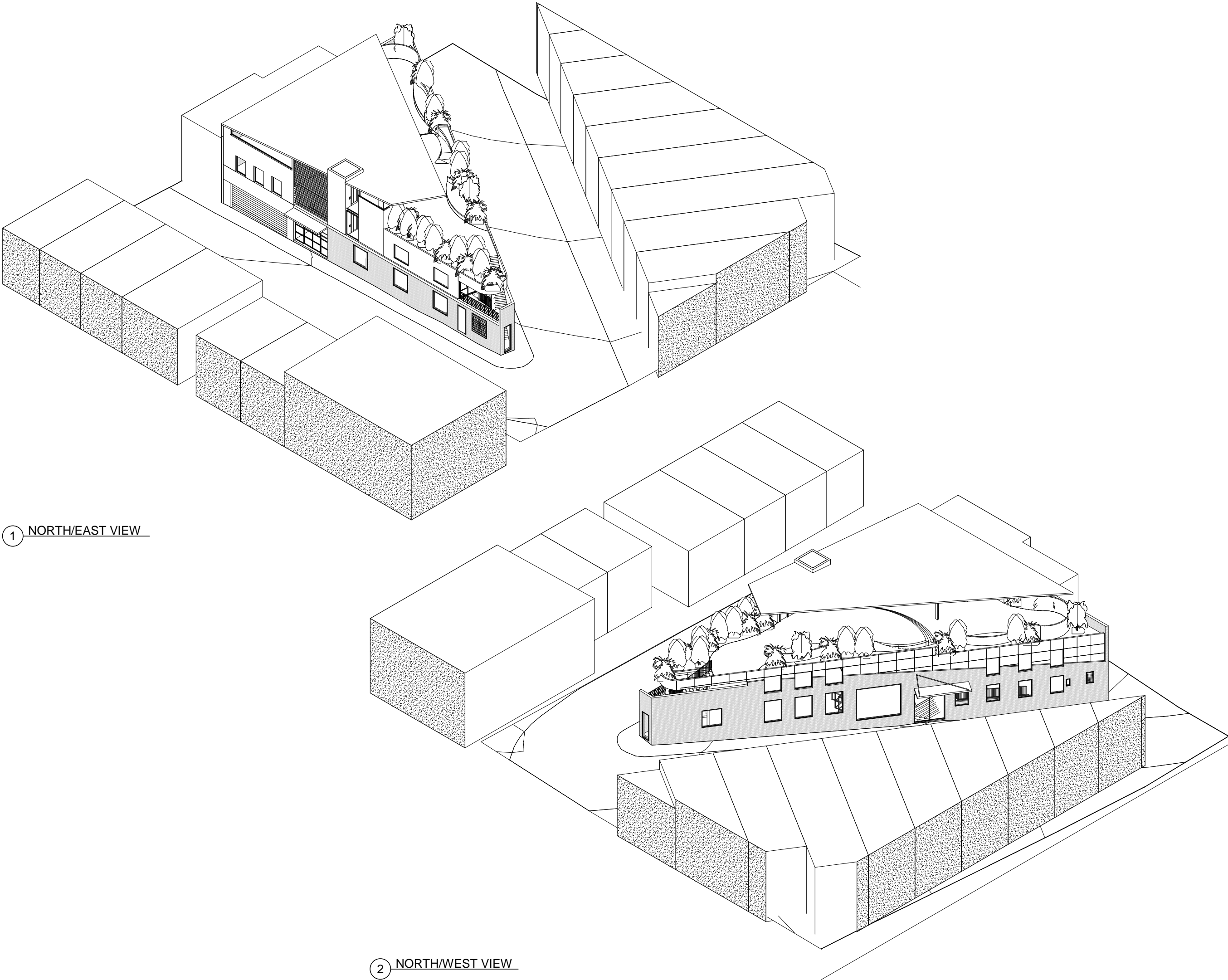
for
Inner Sydney Montessori School

Drawing Title
ELEVATIONS


 Date 26/11/2018 3:56:41 PM
 Scale 1:0 @ A1 or 1:0 @ A3
 Drawing Reference Revision
17579-A-DA-200 C



PRELIMINARY



1 NORTH/EAST VIEW

2 NORTH/WEST VIEW

Issue			
No.	Date	Description	Chkd
A	30.07.18	UPDATE	SJF
B	30.08.18	PRE-SEARs MEETING	SJF
C	26.11.18	SEARs	SJF

Architect
NBRSARCHITECTURE.
Sydney
61 2 9922 2344
nbrsarchitecture.com
Any form of replication of this drawing in full or in part without the written permission of NBRS+PARTNERS Pty Ltd constitutes an infringement of the copyright.
Nominated Architects:
Geoffrey Deane 3766; Andrew Duffin; Garry Hoddinett 5286
ABN 16 002 247 565 © 2017

Project
Camperdown Montessori
at
1-7 Probert Street, Camperdown NSW 2050
for
Inner Sydney Montessori School

Drawing Title
3D