

04/08/2020

Betissa Ryan
Project Director
Health Infrastructure
PO Box 1060
North Sydney 2059

Dear Ms Ryan,

**RE: SYDNEY CHILDREN'S HOSPITAL STAGE 1 / CHILDREN'S COMPREHENSIVE
CANCER CENTRE (SCH STAGE 1/CCCC) PROJECT**

THE PROJECT

The NSW and Federal Government has announced a \$608 million commitment to fund a new Emergency Department, short stay unit and a Children's Comprehensive Cancer Centre for Sydney Children's Hospital, Randwick. The initiative will be supported by the Sydney Children's Hospitals Foundation, the Children's Cancer Institute (CCI) and the University of NSW (UNSW). The planning of this project commenced in the second half of 2019.

The project will be the first stage in the redevelopment of SCH (Stage 1) and will include:

- A new Emergency Department
- Short Stay Unit
- Expansion/ relocation of SCH clinical spaces
- Children's Comprehensive Cancer Centre
- Integration with the Prince of Wales Acute Services Building that is currently being developed.
- Integration with the announced Health Translation Hub which is a 35,000sqm facility being developed by UNSW for education, training and research.
- Maximising synergies between SCH and the Randwick Precinct Partners, through sharing of high cost and complex services, including imaging equipment and logistics.

The key services drivers are:

- Emergency Department presentations are projected to increase by 40% by 2030/31.
- Necessity to establish transformational models of service delivery to provide improved services, such as the streaming model to support patients admitted to the hospital for two days or less.
- The increasing volume of emergency high volume and short stay admissions to the hospital.
- The existing Emergency Department requires urgent expansion to accommodate the development of an EMU and provide additional treatment spaces.

- Increased demand for paediatric critical care and cancer services arising from the growth in the paediatric population and the increased survival of children with cancer and advances in management of critically ill neonates and children.
- Requirement to address ongoing issues in relation to the lack of capacity/spaces (including isolation) treatment spaces which no longer meet AHFG requirements and configuration of sub-areas including EMU will continue to be challenged by activity growth.
- Opportunities to strengthen Education, Training and Research (ETR) through partnering with UNSW and SESLHD.

STUDY AREA

The study area is the northwest corner of High Street and Botany Street (Figure 1, Figure 2). The proposed building for Stage 1 has a basement (Figure 3).

The study area was the subject of an archaeological salvage program by Casey & Lowe in 2019 and a final report was submitted in compliance with the S140 approval: s.2018/s140/035 (see below). The archaeological salvage program removed all of the relics within the project area.

REQUEST FOR SEARS

This letter report supports an application for SEARs for the Children's Comprehensive Cancer Centre for Sydney Children's Hospital, Randwick.

ARCHAEOLOGICAL WORK ALREADY COMPLETED

Heritage Act 1977 Approval

In 2018 Casey & Lowe was commissioned by Lendlease on behalf of Health Infrastructure to write an updated Historical Archaeological Assessment which addressed Stages 1 and 2 of the Prince of Wales Campus Redevelopment:

1. *Prince of Wales Hospital Randwick Campus Redevelopment Stages 1 & 2, Historical Archaeological Research Design & S140 Application, NSW Heritage Act 1977, Casey & Lowe December 2018.*

Subsequent to this, Casey & Lowe obtained a S140 approval 2018/s140/035 under the *Heritage Act 1977* to undertake archaeological excavation and recording for the project (Figure 4). The staged salvage program was completed during January to April 2019. The final report was issued in compliance with the S140 in May 2020:

2. *Historical Archaeological Excavation Report, Prince of Wales Hospital, Randwick Campus Redevelopment, report to Lendlease Building on behalf of Health Infrastructure, May 2020.*

State Significant Development

SSD9113 ASB Building, Conditions of Approval B53

Historic Archaeology

Prior to the commencement of works, an Archaeological Research Design (ARD) including an Archaeological Excavation Methodology is to be prepared in accordance with Heritage Council guidelines. The ARD is to require that all affected historical archaeological relics and or deposits of Local significance are to be subject to professional archaeological excavation and/or recording before any construction works which will impact those relics commences. The ARD must also incorporate recommendations No's.1 – 8 provided in Section 8.2 of the Historic Archaeology Assessment, dated April 2018, prepared by Casey and Lowe. The ARD

is to be developed in consultation with the Heritage Division of the Office of Environment and Heritage, and a copy submitted to the Planning Secretary.

This condition of approval was fulfilled by the submission of report 1 above.
B54 required:

Within six months of completion of archaeological works, a copy of the final excavation report(s) shall be prepared and lodged with the Heritage Council of NSW, Council and the Planning Secretary. The Applicant must also nominate a repository for the relics salvaged from any historic archaeological investigations.

Report 1 included an Archaeological Research Design which was submitted in compliance with B53. The archaeological report on the results of the salvage excavation was lodged with the Planning Secretary in May 2020.

IMPACT ON RELICS BY PROPOSAL

The archaeological salvage program between January to April 2019 removed all of the relics within the study area and the block outlined in Figure 4. Therefore, the current proposal will not impact on any relics or significant historical archaeological remains. There will be no impact on significance.

RECOMMENDATIONS

1. No further archaeological reporting or excavation is required for the current proposal.

Please contact me if you have any further questions.

Yours sincerely,



DR MARY CASEY
DIRECTOR

Casey & Lowe Pty Ltd
Archaeology & Heritage
mary.casey@caseyandlowe.com.au
0419 683 152

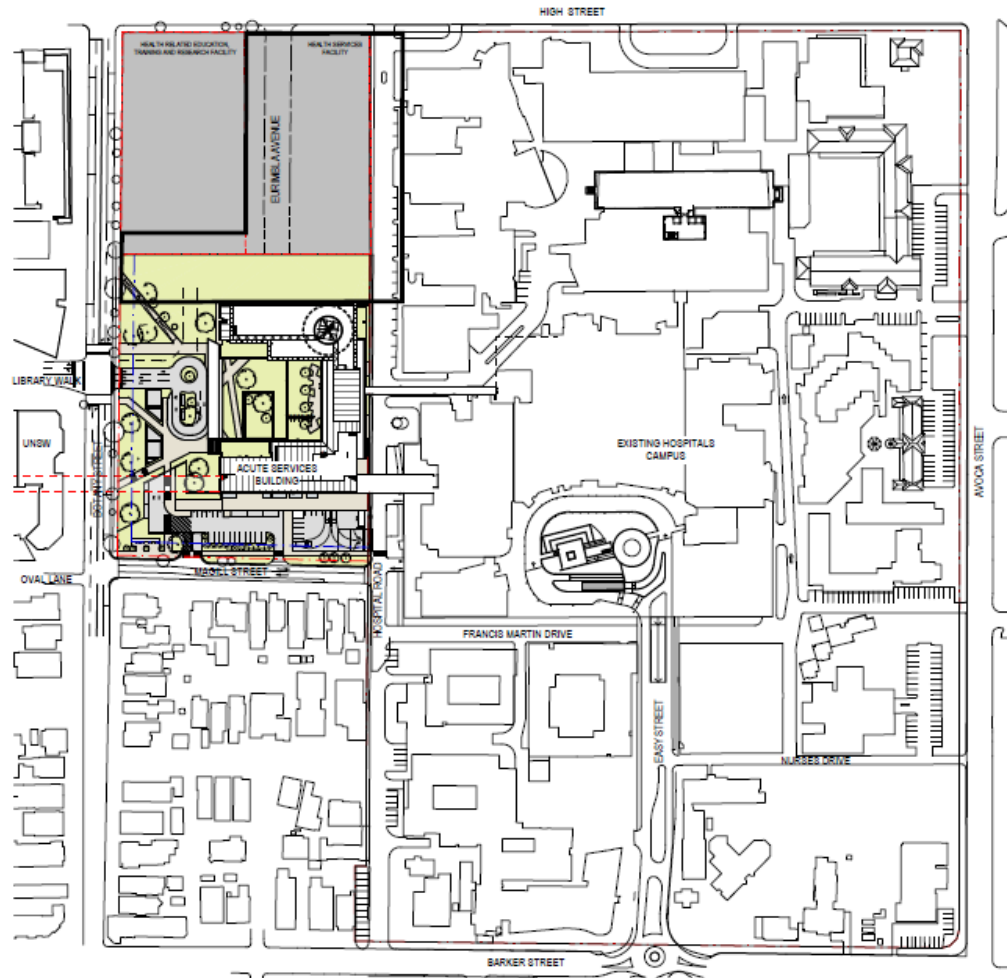


Figure 1: Plan showing the general location of the study area. Source: Health Infrastructure.

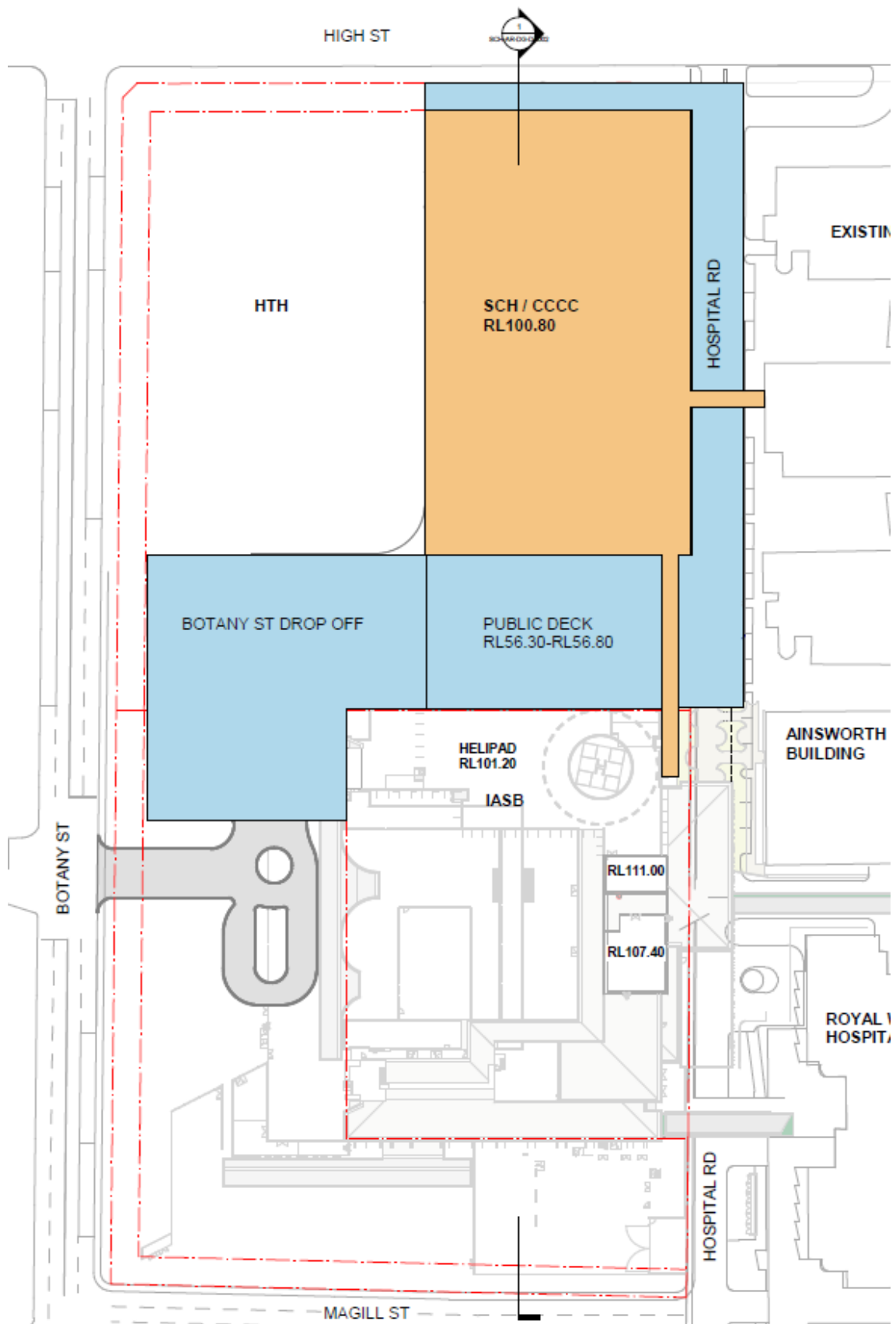


Figure 2: Project study area for the SEARs. Billard Leece Partnership Pty Ltd for Health Infrastructure.

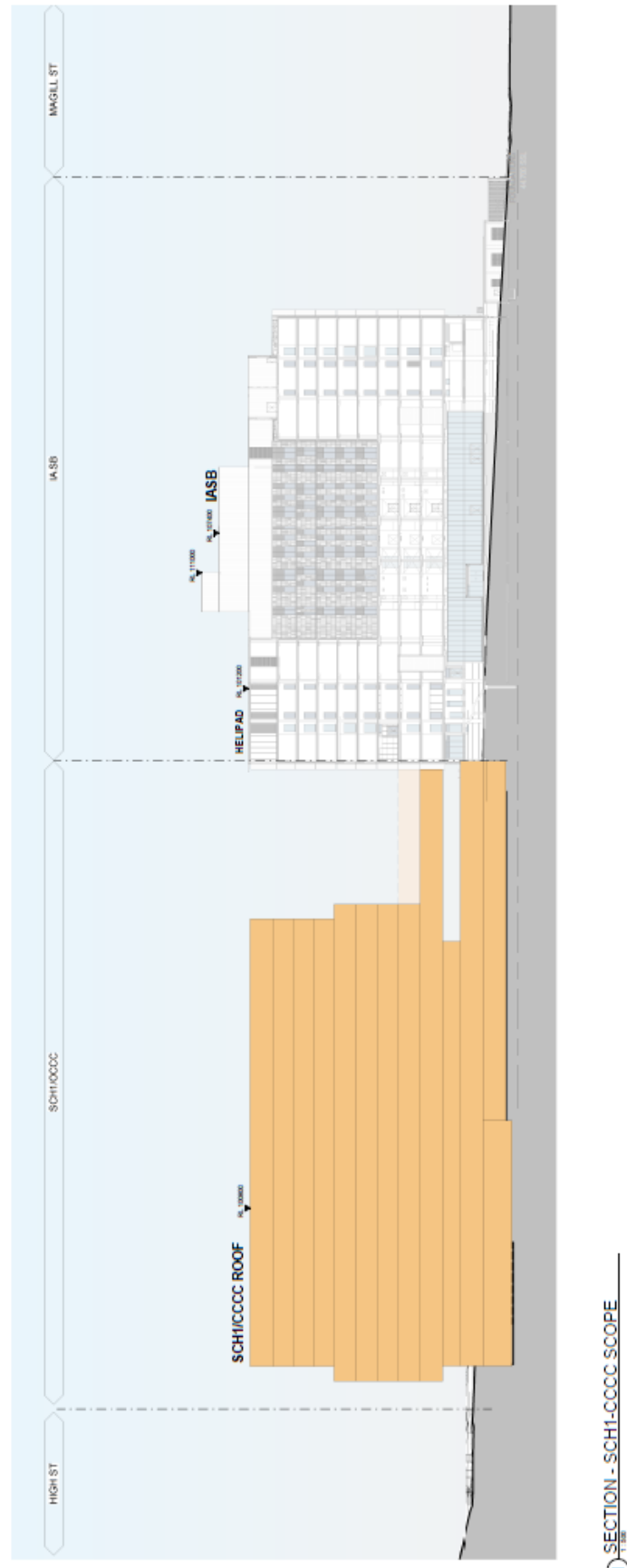


Figure 3: Section through the proposed building with basement.

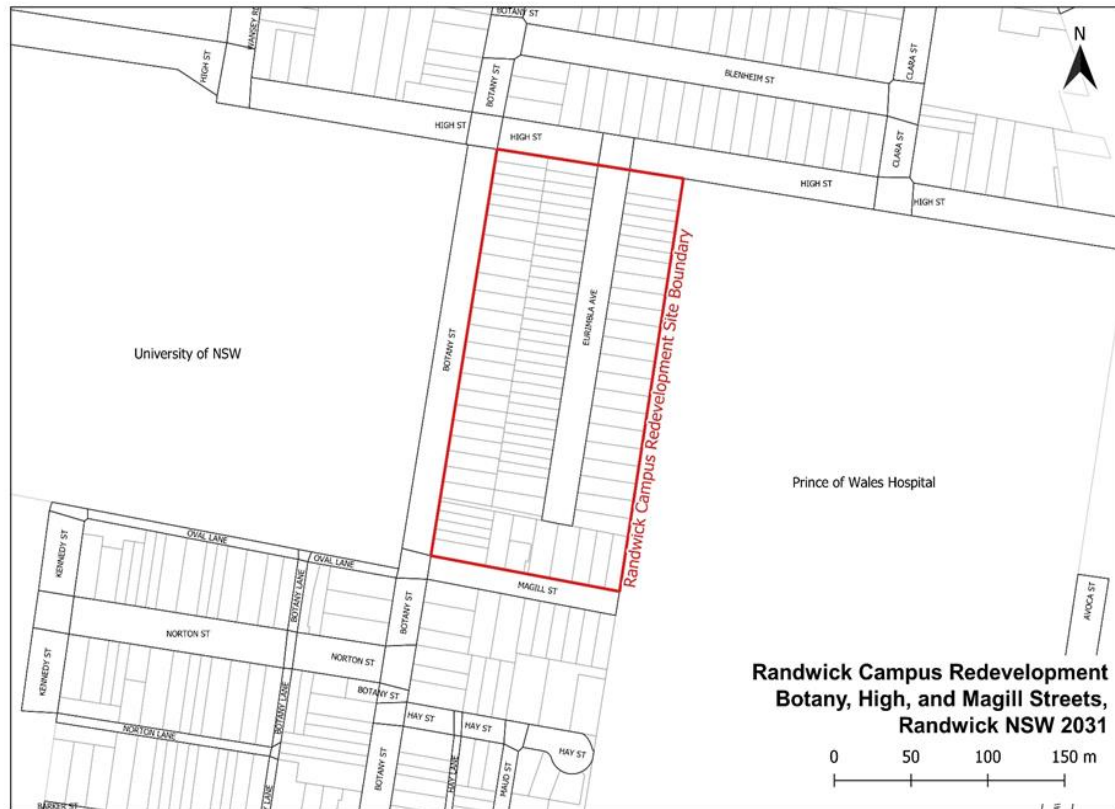


Figure 4: Location of area approved for archaeological salvage. The salvage program was completed in April 2019 and the excavation report issued in May 2020.