

03	For SEARS Request	18/09/20
02	For SEARS Request	19/08/20
01	For SEARS Request	30/06/20
00	For SEARS Request	24/06/20
REV		

Billard Leece Partnership Pty Ltd
Architects & Urban Planners
72-80 Cooper St
Surry Hills 2010
NSW Australia
T +61 2 8096 4066
E info@blp.com.au
www.blp.com.au

Health Infrastructure
NSW

PROJECT
The Children's Hospital
at Westmead
Redevelopment

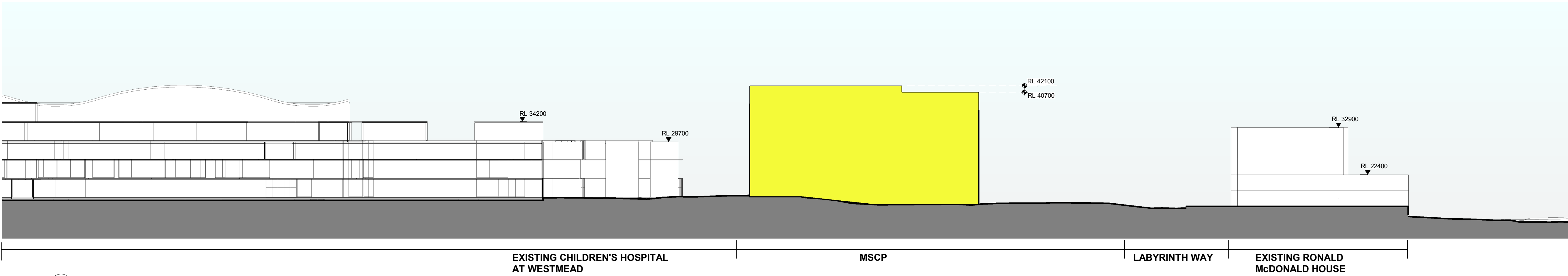
DESCRIPTION
SITE
PLAN-MULTISTOREY
CAR PARK SCOPE

Project No	19038
Scale	Date
As indicated@A1	18/09/20
Drawn By	Checked By
MDM	
Drawing No	Revision
CHW-AR-DG-MCP-DA001	03

INFORMATION

KEY

PROPOSED
MULTISTOREY CAR
PARK BUILDING



1 SECTION MSCP
1 : 500

03	For SEARS Request	18/09/20
02	For SEARS Request	19/08/20
01	For SEARS Request	30/06/20
00	For SEARS Request	24/06/20
REV		



Billard Leece Partnership Pty Ltd
Architects & Urban Planners
72-80 Cooper St
Surry Hills 2010
NSW Australia
T +61 2 8096 4066
E info@blp.com.au
www.blp.com.au

Health Infrastructure
NSW

The Children's Hospital
at Westmead
Redevelopment

SITE
SECTION-MULTISTOREY
CAR PARK SCOPE

Project No	19038
Scale	Date
1 : 500@A1	30/06/2020
Drawn By	Checked By
MDM	-
Drawing No	Revision
CHW-AR-DG-MSC-DA002	03