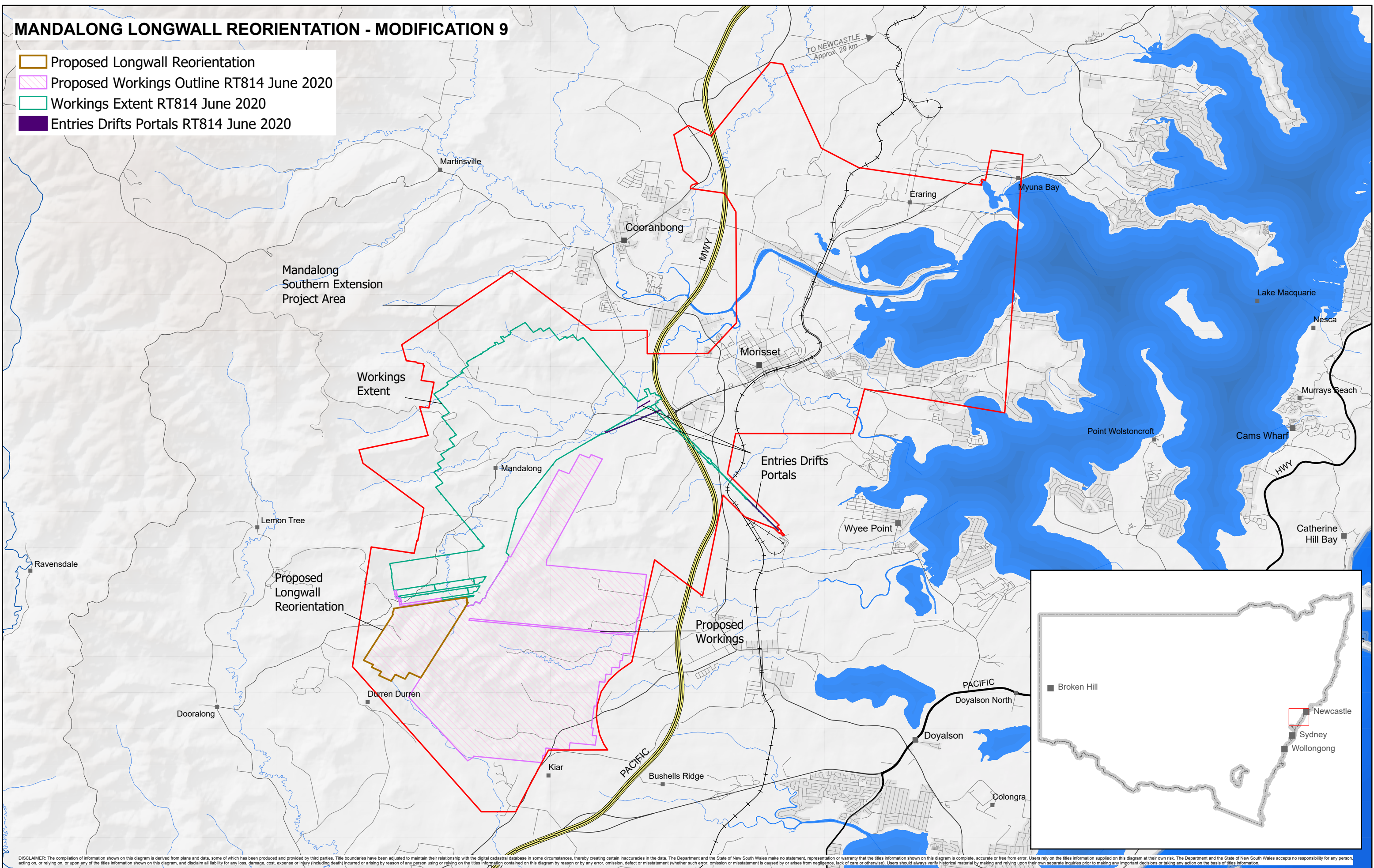


MANDALONG LONGWALL REORIENTATION - MODIFICATION 9

- Proposed Longwall Reorientation
- Proposed Workings Outline RT814 June 2020
- Workings Extent RT814 June 2020
- Entries Drifts Portals RT814 June 2020



DISCLAIMER: The compilation of information shown on this diagram is derived from plans and data, some of which has been produced and provided by third parties. Title boundaries have been adjusted to maintain their relationship with the digital cadastral database in some circumstances, thereby creating certain inaccuracies in the data. The Department and the State of New South Wales make no statement, representation or warranty that the titles information shown on this diagram is complete, accurate or free from error. Users rely on the titles information supplied on this diagram at their own risk. The Department and the State of New South Wales accepts no responsibility for any person, acting on, or relying on, or upon any of the titles information shown on this diagram, and disclaim all liability for any loss, damage, cost, expense or injury (including death) incurred or arising by reason of any person using or relying on the titles information contained on this diagram by reason or by any error, omission, defect or misstatement (whether such error, omission or misstatement is caused by or arises from negligence, lack of care or otherwise). Users should always verify historical material by making and relying upon their own separate inquiries prior to making any important decisions or taking any action on the basis of titles information.

DIAGRAM: SSD 5144 MOD 9 - 1

- Mandalong Southern Extension Project

Reference No.: SSD 5144 MOD 9
Project: Mandalong Longwall Reorientation - Modification 9
Applicant: Centennial Mandalong Pty Limited

Note: Project data supplied by applicant.
The Department accepts no liability for any inaccuracies.

SPATIAL SERVICES
RESOURCE OPERATIONS

