

1930/763908

# SNAPPER MINE NORTHERN EXTENSION

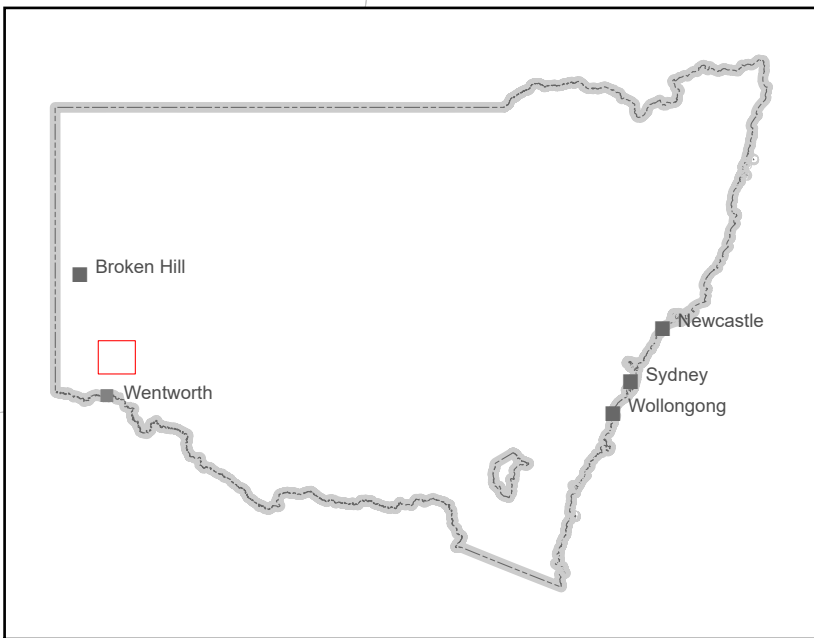
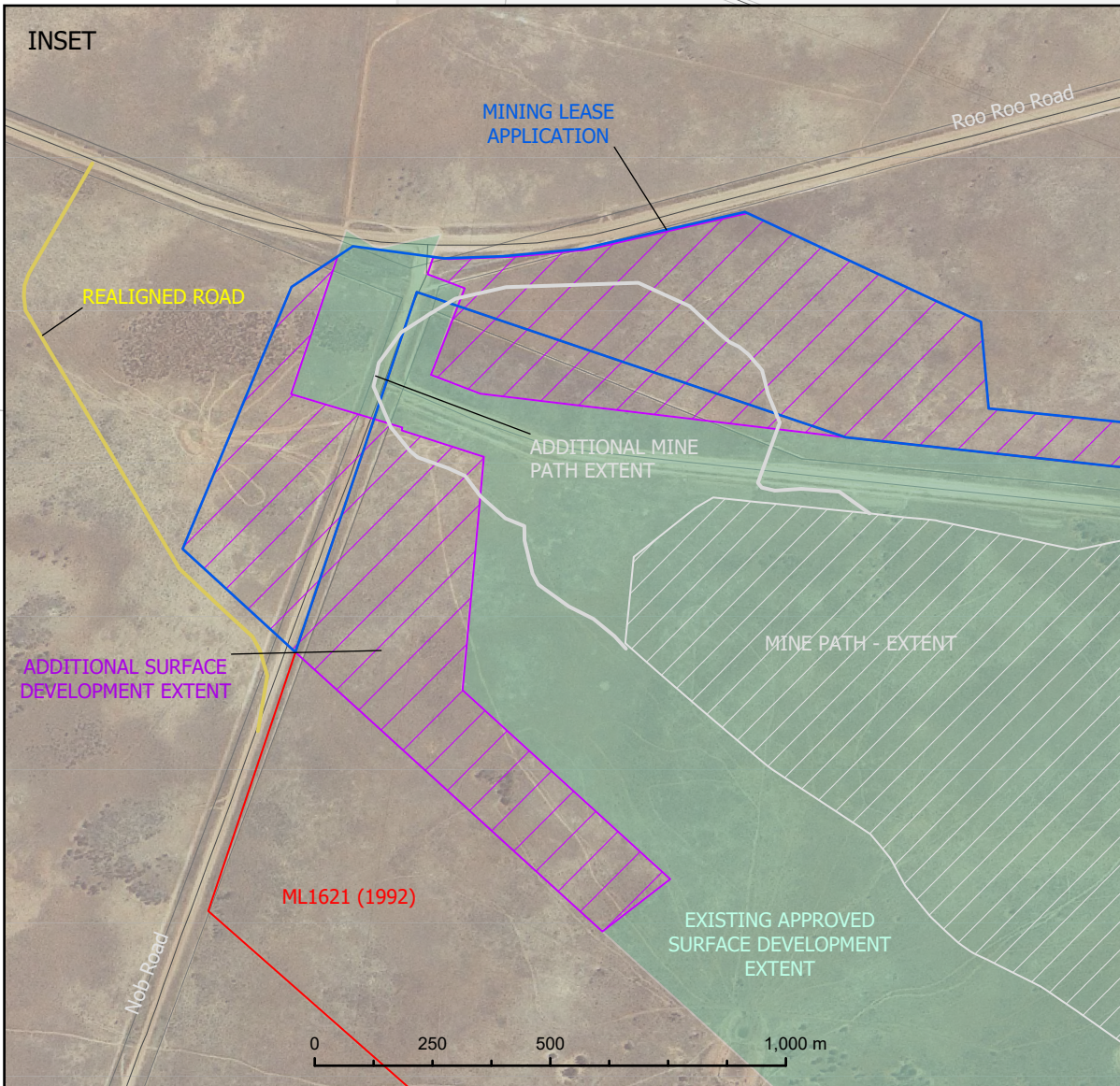


DIAGRAM MP06\_0168-MOD 7

- Mining Lease Application Boundary
- Additional MinePath Extent
- Additional Surface Development Extent

- Realigned Road
- Approved Surface Development Areas - Relinquished
- Existing Approved Surface Development Extent

- Mining Lease 1621 (1992)
- Mine Path Extent

Development Application No.: MP06\_0168-MOD 7  
Project: Snapper Mine Northern Extension - Modification 7  
Applicant: Tronox Mining Australia

Note: Project data supplied by applicant.  
The Department accepts no liability for any inaccuracies.

SPATIAL SERVICES  
RESOURCE OPERATIONS

