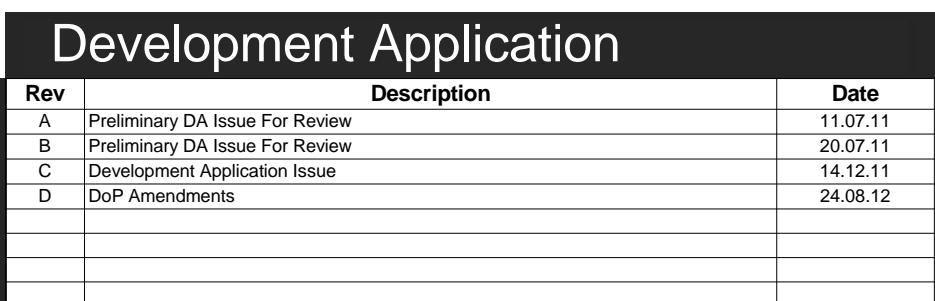




|      |   |      |  |
|------|---|------|--|
| BO   | Community Art Work Elements   | LYb  | Prefinished Aluminium Fixed Horizontal Louvre Panels above Retail Units  |
| B0   | Bollard Types   |      | Facing Louvre System (See also CPY1b)  |
| B01  | Standard Fixed Roll   |      | External Cladding And Roof Living Types  |
| B02  | Removable Roll  | MC1a | Prefinished Lysight Kliplok 700 Roofing Sheets (OE) - Finished In Colourbond "Bushland" With Box Gutter Finish To Match To Terrace Housing               |
| BS   | Bike Store / Rack   |      |  |
| C    | Canopy Types  | MC1b | Proprietary External Wall Panel Cladding System With Exposed Joists To Extend Elevation Of Apartments - Colour Variations To Match Pdc, P1a, P1b and P1c |
| CY1a | Prefinished Suspended Steel Framed Canopy With Curved Metal Panel Soft To Perimetry Floor And Gym Entry   |      |  |
| CY1b | Prefinished Steel Framed Glazed Canopy Over Terrace Entry To Residential Units  | MC1c | Proprietary External Wall Panel Cladding System With Concealed Joists To Window Box Elements - Colour Variations To Match P1a, P1b and P1c               |
| CY1c | Prefinished Aluminium Glaze Sun Shading Canopy To North Facing Residential Apartment Windows  |      | Corten Steel Cladding Panel System With Box Gutter Pattern Fined Over Split Pattern Frame System To Common Terrace Entry                                 |
| CY1d | Prefinished Steel Framed Box Section Sun Louvre Canopies To Townhouses - Cabots and Terraces  | MC1e | Prefinished Lysight Kliplok 700 Roofing Sheets (OE) - Finished In Colourbond "Bushland" To Match To Terrace Housing                                      |
| FE   | Fire Exit - Point Of Discharge To Open Space  | P    | Applied Coatings (Refer Also to Drawing D0A00)   |
| FHV  | Fire Hydrant Booster Valves   | Pa   | Base Building Colour To Match - Dulux / Unseed / P15.B3  |
| FT   | Fence / Screen / Types  | Pb   | Standard Feature Colour To Match - Dulux / Whisper / P15.B6  |
| FT1a | Prefinished Vertical Panel Fencing With Colour Variations To Townhouses Terraces  | Pc   | Slab Edge And Blinds Colour To Match - Dulux / Whisper White / PCW/F67461  |
| FT2  | Glaze Framing Systems (All Frames To Comply With AS2047)  |      |  |
| GF0a | Framed Curtain Wall System With Proprietary Door And Window Opening Systems With Black Powdercoat Finish (Retail - Precincts P1 and P2)             | P1a  | Feature #1 Colour To Match - Dulux / Play School / P10.9   |
| GF0b | Framed Curtain Wall System With Black Powdercoat Finish To Gym Areas  | P1b  | Feature #2 Colour To Match - Dulux / Warmers / P10.9.G   |
| GF1b | Frameless Glass Curtain Wall System With Laminated High Strength Transparent Image Of Aboriginal Australia Flag Applied To Inside Face              | P1c  | Feature #3 Colour To Match - Dulux / Hot Ginger / P10.9.F  |
| GF1c | Framed Curtain Wall System With Black Powdercoat Finish To Residential Floor  | RL   | Relative Level   |
| GF1d | Prefinished Metal Framed Sliding Door Sets To Residential Apartments and Townhouses With Black Powdercoat Finish                                    | RS   | Roller Shutter Types   |
| GF1e | Prefinished Metal Framed Window Systems To Residential Apartments and Townhouses With Black Powdercoat Finish                                       | TS1  | Prefinished Security Entry & Exit Shutter To Residential Basement Parking at Vine Street   |
| GL   | Glazing Types (To Comply With AS1288)   |      |  |
| GL1  | Handrail Balustrade Types (All Glazing Components To AS1288)  | T51a | The Tile and Paver Types (Slip Resistance Grade Of Tiles To Be Selected To Relate To Use And Exposure)   |
| GL1a | Prefinished Steel Framed Balustrades with Extruded Aluminium Handrail And Glazed Balustrade Panels With Gradient Print To Residential Balconies     | T51b | 300x600mm Floor Tiles To General Areas - Retail / Gym / Basement   |
| GL1b | Prefinished Aluminium Glazed Balustrades with Extruded Aluminium Handrail And Glazed Balustrade Panels With Gradient Print To Residential Balconies | T51c | 300x600mm Direct Stick Floor Tiles To Residential Floor / Lobbies Areas  |
| GL1c | Prefinished Aluminium Glazed Balustrades with Extruded Aluminium Handrail And Glazed Balustrade Panels With Gradient Print To Residential Balconies | T51d | 600x600mm External Paver To Residential Terrace & Balcony Areas  |
| GL1d | Prefinished Aluminium Glazed Balustrades with Extruded Aluminium Handrail And Glazed Balustrade Panels With Gradient Print To Residential Balconies | T51e | 300x600mm Direct Stick Floor Tiles To Kitchen Areas Of Apartments and Townhouses   |
| GL1e | Prefinished Aluminium Glazed Balustrades with Extruded Aluminium Handrail And Glazed Balustrade Panels With Gradient Print To Residential Balconies | TS1f | 300x300mm Tiles Laid To Falls In Both Rooms And Entry To Apartments and Townhouses   |
| LB   | Letter Boxes (Installed To Comply With Australian Post Regulations)   | WP   | Waterproofing Systems  |
| LV   | Louvre Types  | WP0a | Sheet Membrane To Flat Roof Areas (Generally Screens/Membrane/Insulation/Balast)   |
| LV1a | Prefinished Aluminium Fixed Vertical Louvres to Residential Balconies Finished As Clear Anodized  | WS   | Wheel Stops (To Comply To AS 2890.1)   |



0m 2m 4m 6m 8m 10m 20m  
Scale Bar 1:200

1DA300 D

|   |
|---|
| <p><b>General Notes:</b></p> <p>Architectural Drawings To Be Read In Conjunction With All Other Consultants Detailed Drawings, Reports And Specifications.</p> <p>All Levels Indicated Taken To Australian Height Datum (AHD)</p> <p>Refer to ODA900 For Abbreviation Schedule And Proposed Outline Colour Selections And Finishes Selections.</p> <p>Site Underlay Based On Survey Carried Out By Denny Linker For Previous Application And Subsequent Survey Work Carried Out By Daw &amp; Walton Consulting Surveyors - Refer To Drawing 302808.</p> |
|---|