

'3 Murray Rose Avenue'

Prepared for and on behalf of The GPT Group

Environmental Assessment Application

EA Submission

19 March 2013_modified

Drawing Schedule

For Assessment

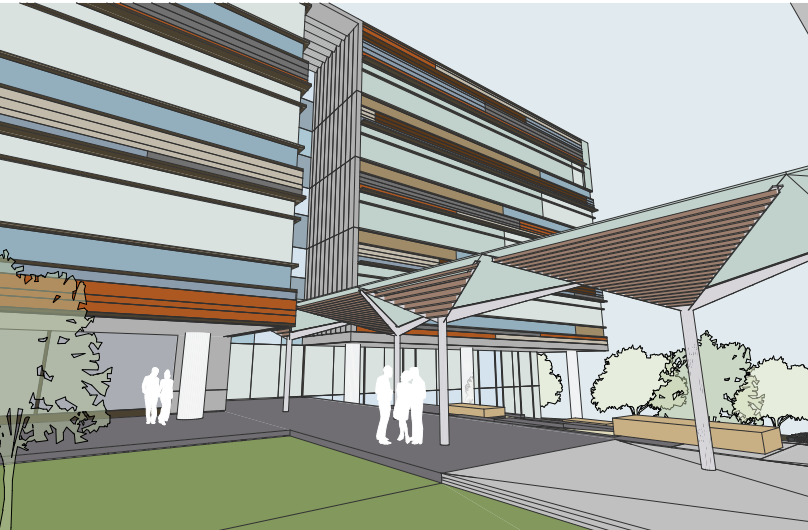
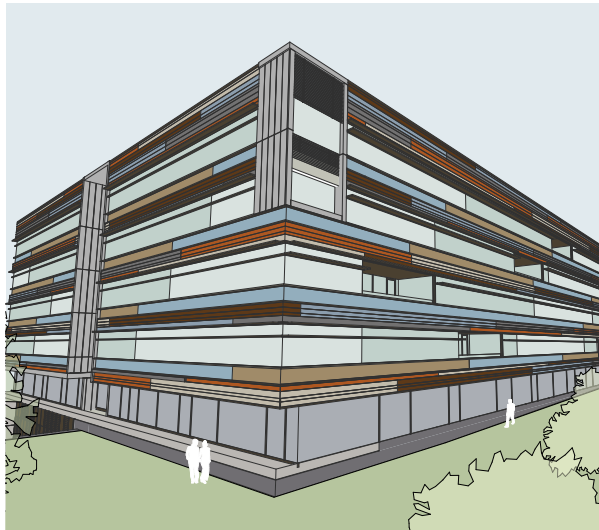
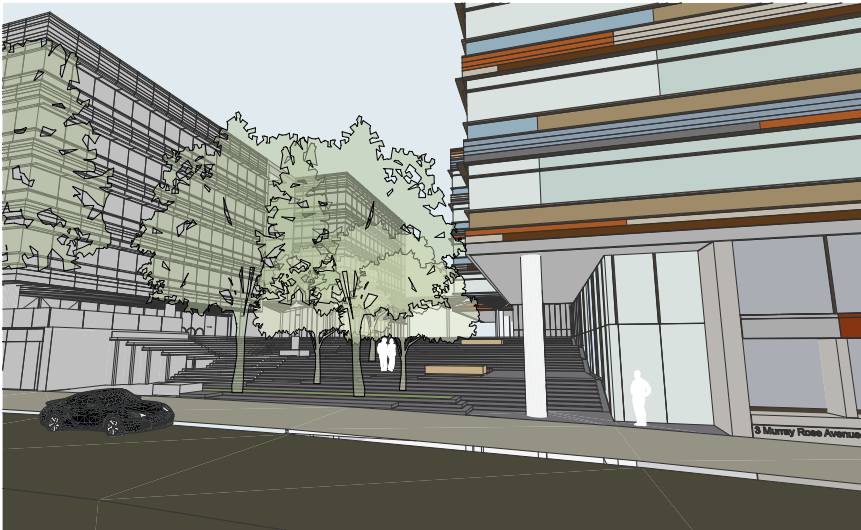
EA000	Cover Page	J
EA001	Site Analysis	C
EA002	Master Plan	D
EA003	Interim Site Plan	C
EA004	Demolition Plan	D
EA005	Context Elevations South	E
EA006	Context Elevations East	E
EA007	Context Elevations North	E
EA008	Context Elevations West	E
EA009	Photomontages	D
EA010	Infrastructure Plan	A
EA100	Site / Roof Plan	D
EA101A	Basement 03 Plan	D
EA101B	Basement 02 Plan	F
EA102	Basement 01 Plan	F
EA103	Lower Ground Floor Plan	F
EA104	Upper Ground Floor Plan	G
EA105	Typical Floor Plan_Level 01&02	D
EA106	Typical Floor Plan_Level 03&04	G
EA107	Plant Level Plan	C
EA108	Through Site Link - Interim & Final	C
EA109	Through Site Link - Interim & Final	C
EA110	Area Schedule	E
EA300	South Elevation	H
EA301	East Elevation	H
EA302	North Elevation	H
EA303	West Elevation	H
EA400	Section A	E
EA401	Section B	E
EA500	Shadow Analysis	F

For Information Only

EA700	Perspective View 01	D
EA701	Perspective View 02	D
EA702	Perspective View 03	D



Building Character Studies



Legend

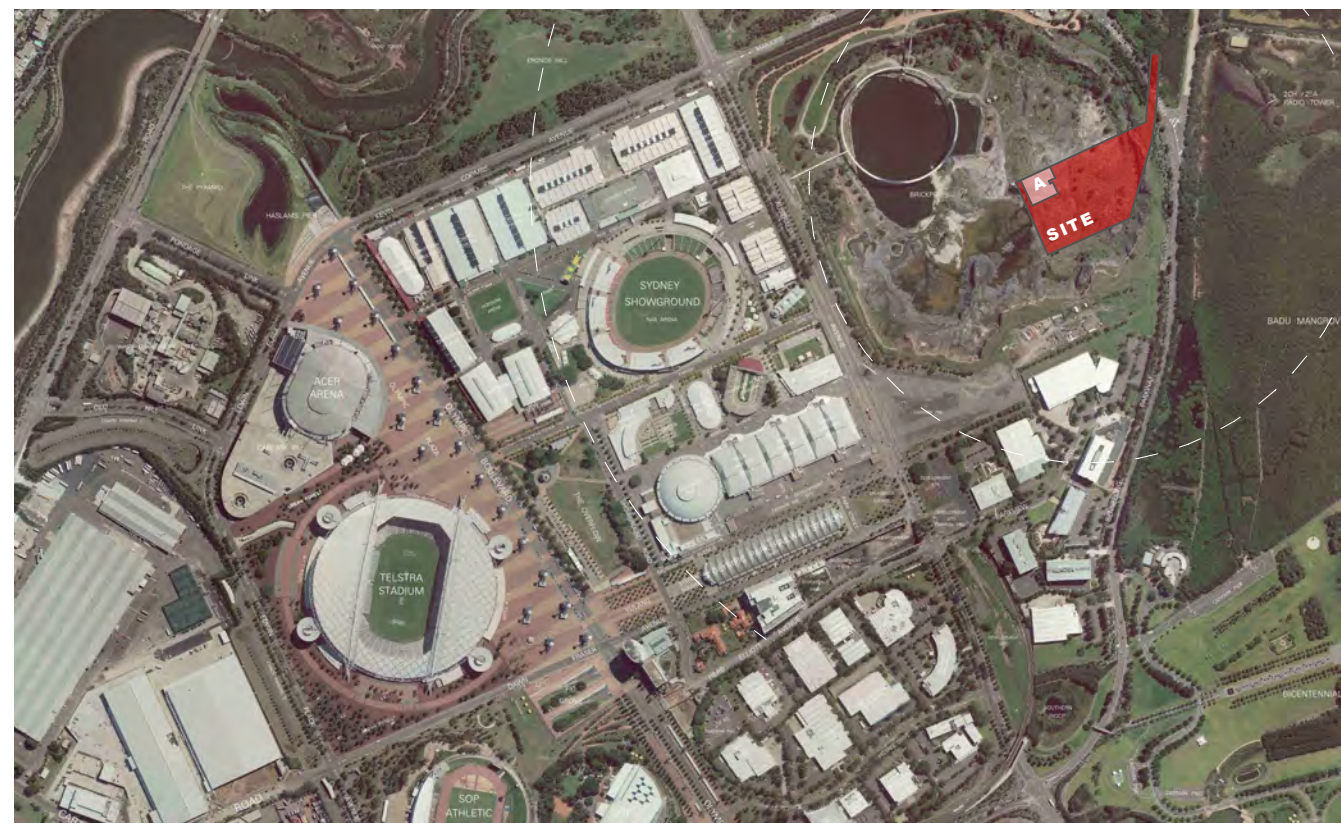
AMB	Toilet cubicle for users with ambulant disabilities
B2 A 14	Carpark Number
CLNR	Cleaner store
CR1	Boom gate/garage door card reader
FS	Fire Stair 01, 02, etc.
FHR	Fire hose reel
HBD	Homebush Datum
HYD	Hydrant
L01 etc	Lift 01, 02, etc.
RL	Relative Level to HBD
SD	Structural Level to HBD
SSL	Sliding frameless glass door
ST	Store
ST01, etc	Stair 01, 02, etc.
TYP	Typical
TFD	To Future Detail

Materials + Finishes Schedule

CW1A	Curtain Wall System Type 1a: Curtain wall system to Facade Engineer's specification. Aluminium frame- powdercoat finish. Colour equal to Interpon 'Anodic Stellar Bronze Matt'. Glass panels- Colours equal to blue, bronze, grey, clear, clear reflective. Thermal performance to Facade Engineer's requirements. Solid panels- Colours and finish equal in appearance to terracotta. Random distribution of panels in 5 colours. Colours equal to Moeding Alphon 'Braun', 'Naturrot', 'Eisengrau', 'Blaugrau' and 'Perigrau'.
CW1B	Curtain Wall System Type 1b: Curtain wall system as per CW1a, including balcony glazing and sun shading system.
CW1C	Curtain Wall System Type 1c: Curtain wall system as per CW1a, including sun shading system.
CW2	Curtain Wall System Type 2: Curtain wall system to Facade Engineer's specification. Aluminium frame- powdercoat finish. Colour equal to Interpon 'Anodic Stellar Bronze Matt'. Glass colour- blue. Thermal performance to Facade Engineer's requirements.
CW4	Curtain Wall System 4: As per CW2. Full height glazing.
CW5	Curtain Wall System 5: As per CW2. Full height glazing to lobby.
CW6	Curtain Wall System 6: As per CW2, bay window.

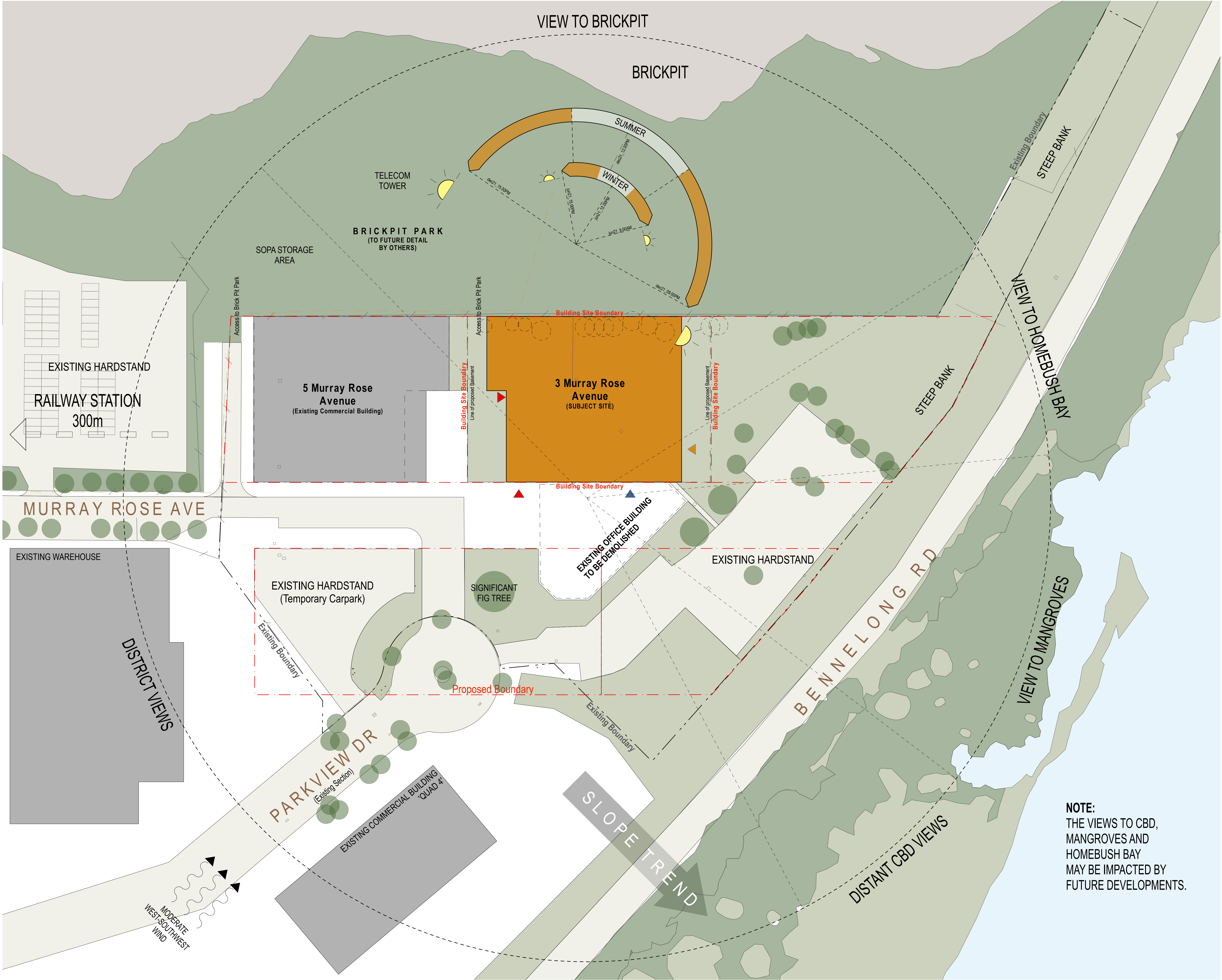
DWS1	Decorative Stone Cladding System Type 1: Material and finish to future detail.
DWS2	Decorative Stone Cladding System Type 2: Material and finish to future detail.
FC1	Compressed Fibre Cement Soffit Type 1: Setout to future detail, expressed joints, colour tbc.
LV1	Louvre Type 1: Horizontal aluminium sunshade, variable depth, to Facade Engineer's specification. Integral to Curtain Wall System CW1. Finishes as per CW1.
LV2	Louvre Type 2: Aluminium louvre screen/door- powdercoat finish. Colour and finish equal to MC1.
LV3	Louvre Type 3: Retractable external blind. Powdercoat finish equal to LV2.
LV4	Louvre Type 4: Aluminium louvre screen/door- powdercoat finish. Colour and finish equal to MC5.
IDC	Interactive Digital Display subject to future detail, which is situated behind the glazing system and flush with the surrounding facade. The Digital Display is intended to be accessed from inside the building for maintenance and is remotely controlled.

MC1	Metal Cladding System Type 1: Cassette type metal cladding system. Finish and colour equal in appearance to Alpolic 'Medium Gray Metallic'.
MC2	Metal Cladding System Type 2: Decorative metal cladding system equal to preweathered Corten steel. Natural finish and colour.
MC3	Metal Cladding System Type 3: Metal cladding system equal to stainless steel. Natural finish and colour.
MC4	Metal Cladding System Type 4: Prefinished screen system with integrated louvre panels as required. 2 colours.
MC5	Metal Cladding System Type 5: Cassette type metal cladding system. Finish and colour equal in appearance to Interpon 'Anodic Stellar Bronze Matt'.
CFC1	Concrete Column Type 1. Off form concrete, smooth finish. Colour equal to 'Brite and Lite'.
AWN1	Potential Awning Type 1: Composite awning system steel frame, glazed roof and timber battens. Steel frame paint finish micaceous oxide 'bridge grey'. Timber equal to spotted gum, natural paint finish.
AWN2	Awning Type 2: Subject to future detail



Location Plan

- Legend**
- Building Entry
 - Carpark Entry
 - Services Entry
 - Vegetation to be removed
 - Vegetation to be retained (Interim)
 - Existing Boundary
 - Proposed Boundaries for future developments



NOTE:
THE VIEWS TO CBD,
MANGROVES AND
HOMEBUSH BAY
MAY BE IMPACTED BY
FUTURE DEVELOPMENTS.